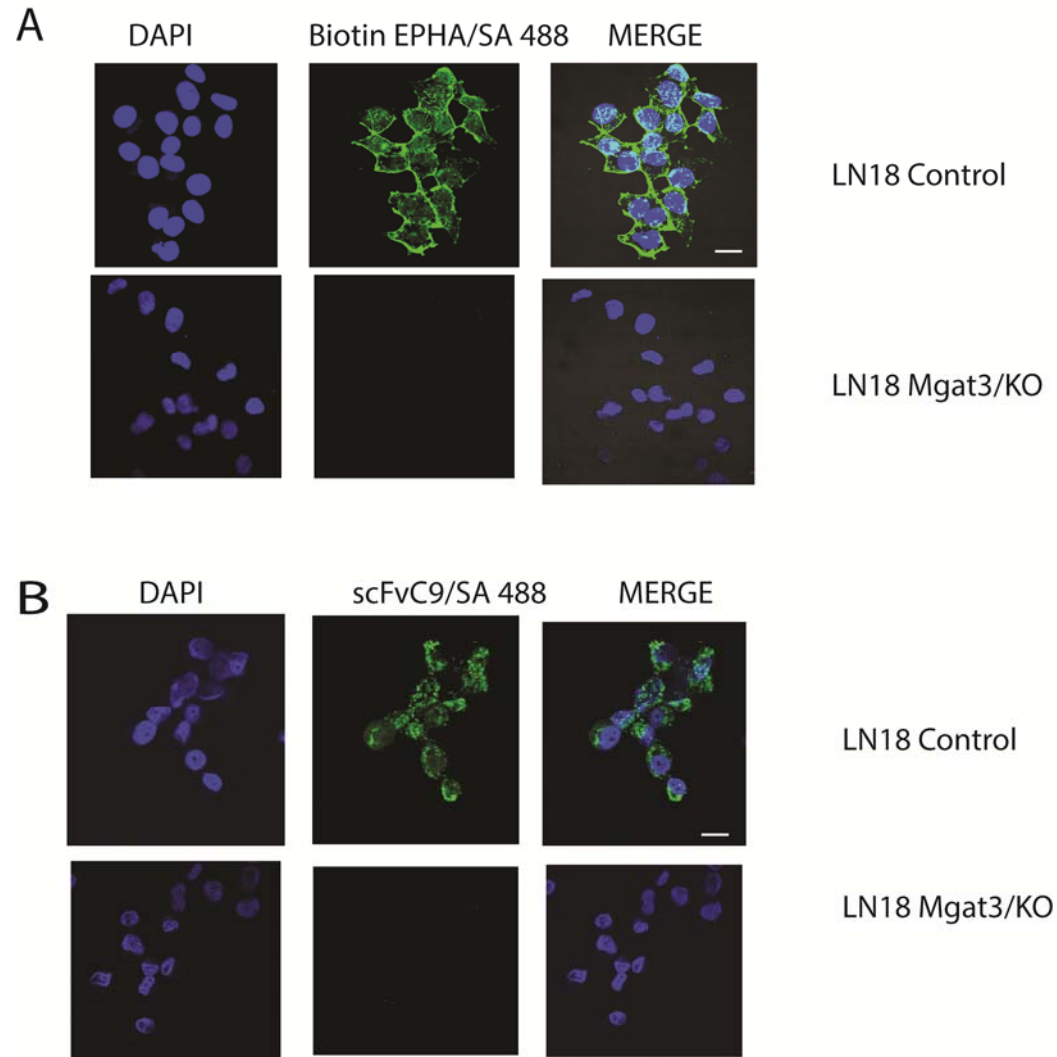


## Supplement Fig. 1



**Supplement Fig. 1 scFvC9 cell binding and specificity in human glioblastoma cells.** (A) Crispr/Cas9 KO of the Mgat3 gene in single cell isolated LN18 clone known as C2 is confirmed by the absence of E-PHA binding indicating a loss of bisecting N-glycan. The non-targeted single cell isolated clone known as control A1 has Mgat3 expression confirmed by the binding of E-PHA lectin., bar 20  $\mu\text{m}$  (B) The scFvC9 biobody binds to LN18 Control A1 clone and has no binding to the LN18 Crispr/Cas9 Mgat3 KO clone C2..