

Ouachita Baptist University

Scholarly Commons @ Ouachita

Ouachi-Talk: A Weekly Newsletter to the
Ouachita Baptist University Family

University Archives

2-5-1996

February 5, 1996

Office of Student Services

Follow this and additional works at: <https://scholarlycommons.obu.edu/ouachitalk>



Part of the [Higher Education Commons](#), and the [Organizational Communication Commons](#)

Recommended Citation

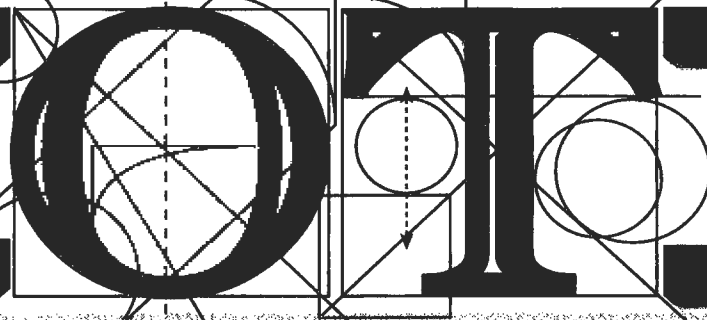
Office of Student Services, "February 5, 1996" (1996). *Ouachi-Talk: A Weekly Newsletter to the Ouachita Baptist University Family*. 411.

<https://scholarlycommons.obu.edu/ouachitalk/411>

This Book is brought to you for free and open access by the University Archives at Scholarly Commons @ Ouachita. It has been accepted for inclusion in Ouachi-Talk: A Weekly Newsletter to the Ouachita Baptist University Family by an authorized administrator of Scholarly Commons @ Ouachita. For more information, please contact mortensona@obu.edu.

FEBRUARY 5, 1996

VOLUME 18 ISSUE 17



From the Other Side

I suppose that the first complaint heard at the first institution of higher education had to do with the cafeteria food. This was quickly followed by the agonizing realization that there simply were not enough parking spaces for everyone within 25 feet of the building to which he or she was going. And then there was campus safety, whose scrutiny of student behavior has held in check the impulses of many a college student. Let me suggest another view of these issues as they relate to our campus.

Pondering the mysteries of mystery meat is a time-honored tradition which may predate academe. Even those of us who came through college after the Jurassic Period remember having only two meats, a couple of vegetables, rubbery jello, and an uninspiring dessert. I remember the thrill when we got the salad bar! The point is, there are many more choices

in our cafeteria today than in any campus cafeteria just a generation ago. And while change never seems to come quickly enough, our food service has been consistently willing to listen to the complaints and has attempted to address them.

If you think parking is a problem here check out a large schools like UA-Fayetteville, UALR, or Auburn. Even full professors at these schools frequently have a significant hike to their offices. Yes, I prefer parking near the ESC door, but when I have to park around JPAC, I remember all those long walks through the rain and cold at Auburn, and it doesn't seem so bad.

At OBU we have been blessed in recent years to have campus safety toward whom complaints can be made. Sometimes students consider them overzealous. However, their job is potentially dangerous to themselves, and their charge is to

help ensure the safety of all the people, possessions, and buildings on campus. Since they have come, we have decreased in campus vandalism and thefts, and the problems which have occurred have been successfully resolved more quickly than before. These are not insignificant gains for the campus community.

Could things improve at OBU? Of course. But maybe we should remind ourselves that the things are much better than they used to be, and much better than at some other campuses. Just a few thoughts from the other side...

Dianne King
Associate Dean of Students

WHAT'S RIGHT: FREE STUFF. THE AMERICAN RED CROSS IS SPONSORING A BLOOD DRIVE MONDAY AND TUESDAY. THIS TIME, THEY HOPE TO OFFER STUDENTS AN INCENTIVE TO GIVE BLOOD. TCBY AND THE LOCAL BOWLING ALLEY HAVE DONATED FREE YOGURT AND BOWLING SHOES TO THOSE WHO GIVE. ALSO, PIZZA FOR LESS WILL SPONSOR A PIZZA PARTY FOR THE SOCIAL CLUB THAT HAS THE HIGHEST PERCENTAGE OF THEIR MEMBERS TO GIVE BLOOD. OTHER BUSINESSES HAVE DONATED ITEMS TO BE GIVEN AWAY AT THE BLOOD DRIVE. THE DATES ARE MONDAY FROM 3:00 PM TO 9:00 PM AND TUESDAY 9:30 AM TO 3:30 PM. HOPE TO SEE YOU THERE WITH YOUR FREE STUFF.

American Red
 Cross
Blood Drive
Monday,
3:00 p.m. to
9:00 p.m.
Tuesday,
9:30 a.m. to
3:30 p.m.
 Evans
 Student
 Center
FREE
GIVE-
AWAYS



BIRTHDAYS

Birthdates and names have been removed for privacy.

E V E N T S O F T H E W E E K

MONDAY
 Blood Drive
 3:00 pm
 to
 9:00 pm

TUESDAY
 Blood Drive
 9:30 am
 to
 3:30 pm
 Chapel
 Robert Upshaw
 FCA

WEDNESDAY
 open

THURSDAY
 Dinner
 for
 Twenty
 5:30 pm
 ESC
 Praise
 and
 Worship
 9:00

FRIDAY
 BSU
 Evangelism
 Workshop

SATURDAY
 Heartbeat
 BSU
 Evangelism
 Workshop

MONDAY ERMINE **TUESDAY** EROGENOUS **WEDNESDAY** ERSTWHIL
THURSDAY ERUBESCENCE **FRIDAY** ERUCT