

Ouachita Baptist University

## Scholarly Commons @ Ouachita

---

Ouachi-Talk: A Weekly Newsletter to the  
Ouachita Baptist University Family

University Archives

---

9-25-1995

### September 25, 1995

Office of Student Services

Follow this and additional works at: <https://scholarlycommons.obu.edu/ouachitalk>



Part of the [Higher Education Commons](#), and the [Organizational Communication Commons](#)

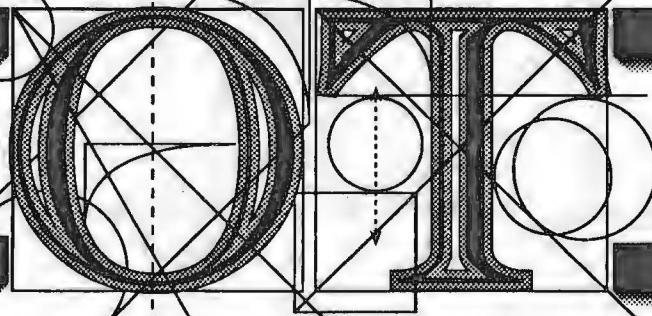
---

#### Recommended Citation

Office of Student Services, "September 25, 1995" (1995). *Ouachi-Talk: A Weekly Newsletter to the Ouachita Baptist University Family*. 297.

<https://scholarlycommons.obu.edu/ouachitalk/297>

This Book is brought to you for free and open access by the University Archives at Scholarly Commons @ Ouachita. It has been accepted for inclusion in Ouachi-Talk: A Weekly Newsletter to the Ouachita Baptist University Family by an authorized administrator of Scholarly Commons @ Ouachita. For more information, please contact [mortensona@obu.edu](mailto:mortensona@obu.edu).



SEPTEMBER 25, 1995

VOLUME 18 ISSUE 5

# TIME TO GIVE

## RED CROSS HOPES FOR LARGE TURNOUT

Right now people are traveling our highways moving from place to place without thinking about may lie ahead. Perhaps someone falls asleep at the wheel of his or her car.

In a blink of an eye, the car shoots across the median, slamming recklessly into the oncoming traffic. The human consequences of an accident of that magnitude are numerous. Many would die, and many more may die unless they are reached in enough time and given proper medical care.

A key element of that medical care is units of blood, donated by people like you and me.

We do not know when an accident like the one mentioned above will take place, however, the constant need for blood to be donated is always there.

There is a great need for more and more people who will donate blood. In Arkansas, 300 units of blood each day need to be collected in order to meet the needs of Arkansas hospital patients. As Ouachitians, we have a chance this week to give a little of ourselves, so that someone may have a second chance to live. The Arkansas Chapter of the American Red Cross



pm in the Evans Student Center Banquet Rooms.

Last year, Arkansas collected approximately 69,000 units of blood in the fiscal year 94/95. However, we had to import over 10,000 units from other states due to the lack of donations.

Arkansans need to donate 80,000 units of blood a year to meet our states growing need.

Blood drives are annual events that take place on our campus.

This year we are hoping for a dramatic increase from last year, in units donated. We on the Senate and those from

the Red Cross believe that this drive will be our best one yet.

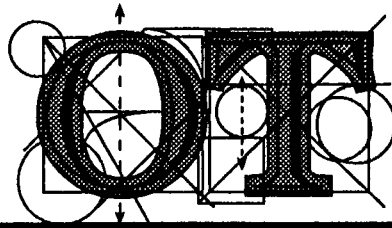
This week each of us has the chance to help out so many people in need. We must take the initiative to make a place in our busy schedule to give a little of ourselves.

Every seven minutes someone in Arkansas needs blood. Come on, let's do our part.

will be sponsoring a blood drive at Ouachita on Tuesday at 4pm to 9pm and on Wednesday from 11am to 3

**David Sanders**  
*Student Senate President*

Congratulations Ouachitonian staff on a great job



**E  
V  
E  
N  
T  
S  
  
O  
F  
  
T  
H  
E  
  
W  
E  
E  
K**

**MONDAY**  
Yearbook  
Photographs  
Administrative  
Staff  
(11:45)

**TUESDAY**  
Yearbook  
Photographs  
**CHAPEL**  
Dr. John Paulhill  
SB Theological  
Seminary  
(10:00)

**WEDNESDAY**  
Yearbook  
Photographs  
Blood Drive  
(ESCBR)

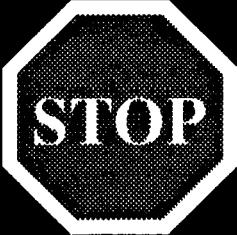
**THURSDAY**  
Yearbook  
Photographs  
Birkett Williams  
Dinner  
(ESCBR)  
Birkett Williams  
Lecture  
George Marsden  
(Mabee Rctl Hl)

**FRIDAY**  
Birkett Williams  
Speaker  
(Mc 100)

**SATURDAY**  
VENTURE  
(JPAC)

**Birkett Williams Lecture**  
**George Marsden**  
on  
**The Role of Church Related Schools  
in Higher Education**

Birkett Williams Lecture will take place on Thursday at 7:30 p.m.  
in the Mabee Recital Hall



We all need to slow down on 8th street and be more mindful of the Residence Hall entrances and those who walk along that area. The speed limit has been posted at 25mph and now the city has cooperated with OBU and will begin enforcing the speed limit.

COMING SOON

**LATE**  
**night**

# BIRTHDAYS

Birthdates and names have been removed for privacy.

MONDAY DEURITUS WEDNESDAY DECOLLETE FRIDAY DECOLLAT  
TUESDAY DETROP THURSDAY DECIMATE