

Ouachita Baptist University

Scholarly Commons @ Ouachita

Ouachi-Talk

University Archives

10-5-1990

October 5, 1990

Office of Student Services

Follow this and additional works at: <https://scholarlycommons.obu.edu/ouachitalk>



Part of the [Higher Education Commons](#), and the [Organizational Communication Commons](#)

Recommended Citation

Office of Student Services, "October 5, 1990" (1990). *Ouachi-Talk*. 286.
<https://scholarlycommons.obu.edu/ouachitalk/286>

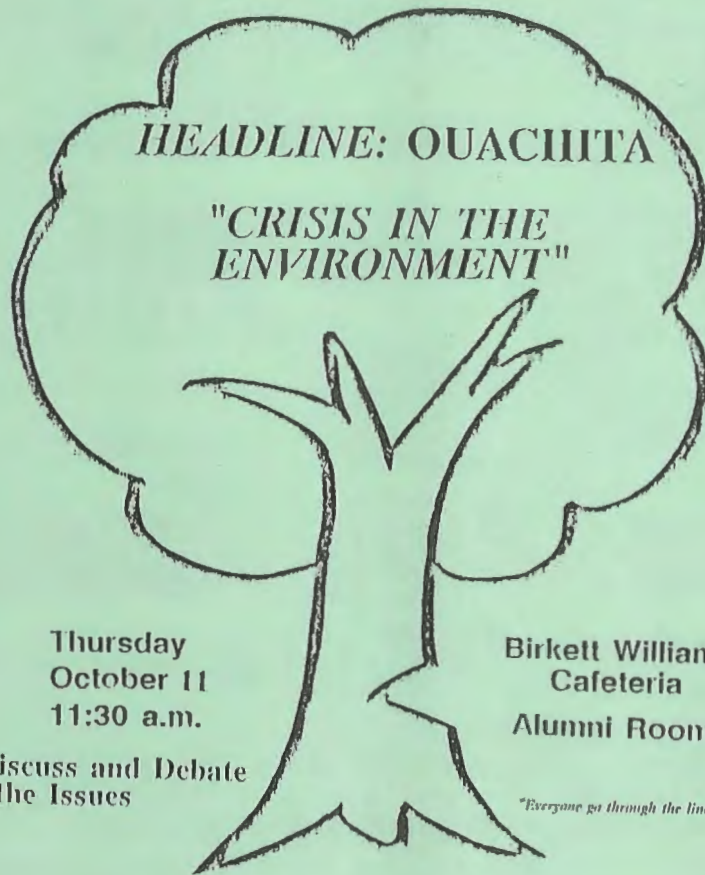
This Book is brought to you for free and open access by the University Archives at Scholarly Commons @ Ouachita. It has been accepted for inclusion in Ouachi-Talk by an authorized administrator of Scholarly Commons @ Ouachita. For more information, please contact mortensona@obu.edu.

October 5, 1990
Volume 13, NO.5



OUACHI-TALK

A WEEKLY NEWSLETTER TO THE OUACHITA BAPTIST UNIVERSITY
FAMILY FROM THE OFFICE OF THE DEAN OF STUDENTS



HEADLINE: OUACHITA

"CRISIS IN THE
ENVIRONMENT"

Thursday
October 11
11:30 a.m.

Birkett Williams
Cafeteria
Alumni Room

Come Discuss and Debate
the Issues

"Everyone go through the line"

ALL STUDENTS AND FACULTY INVITED

Sponsored by the Student Senate and the Academic Affairs Office

October 1990

Friday	Saturday	Monday
BSU Stt Cnvntn Hnrs Cntmprry Wrld Fld Trp Noon- Jr/Sr Rlgn Cllqum (BWGR) 5:30PM- Second Century Banquet (ESCBR)	BSU State Convention Hnrs Cntmprry Wrld Fld Trp 7pm- SURPRISE (BWA) 10pm- Fth BC (SPEC)	Noon- Ad Stff (BWA)
5	6	8

Tuesday	Wednesday	Thursday
Chpl: Ashley Smith Noon- Univrsty Spprt Stff (BWA) Yth Mnstrs Bnqut, (ESCBR)	Home Econst Star Event (ESC) 7:30am- JEC Board Mtg (BWP)	Board of Trustees (ESC BR/BR/FL) Development Council Mtg (MRH) <i>11:30 - Trey Berry (BWA)</i> 7:30pm- BSU Bible Study (ESCSR)
9	10	11

Oct. 5-6 Volleyball Uni. of Montevallo Tourney in
 Montevallo, Ala. time TBA

Oct. 9 Volleyball vs. UA-L.R. in L.R. at 7:00

Oct. 11 Volleyball vs. Harding in OBU at 7:00

NOTES OF CONCERN:



Angel Martin, a freshman at OBU, will be in the hospital for approximately five more weeks due to a recent automobile accident. If you would like to send a card, mail it to: Angel Martin
Jefferson Memorial
Pine Bluff, AR 71601

Marcus Goodner, a student who ran track for OBU last year, was paralyzed from the neck down because of an automobile accident. If you would like to express your concern, he can be reached at Baylor Hospital.



NOTE OF HEALTH:

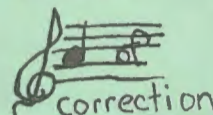
Faculty and students can have their flu shots administered here at the Health Services Office. Cost is \$6.00, payable at the time of "shooting." The nurses hours are 9 a.m.- 1 p.m. Mon.-Fri.



NOTE OF REMINDER:

Be sure your mailbox is locked when you leave it. Presetting it invites temptation for snoopers. We would hate for you to lose your life-line home!

NOTE OF CORRECTION:



A previously printed counseling schedule for Dr. Viser was incorrect. The correct schedule for Dr. Viser's hours is as follows:

MONDAY
8-10:00

TUESDAY
2-3:00

WEDNESDAY
8-10:00
1:45-4:15

FRIDAY
8-10:00

BIRTHDAYS

Birthdates and names have been removed for privacy reasons.

Daily Words

- Oct. 8 - overage
9 - tympany
10 - vallation
11 - necromancy
12 - nee

When one door closes, another opens, but we often look so long and so regretfully upon the closed door that we do not see the one that has opened for us.

Alexander Graham Bell