

Ouachita Baptist University

Scholarly Commons @ Ouachita

Arkansas Baptist Newsmagazine, 1955-1959

Arkansas Baptist Newsmagazine

4-28-1955

April 28, 1955

Arkansas Baptist State Convention

Follow this and additional works at: https://scholarlycommons.obu.edu/arbn_55-59



Part of the [Christian Denominations and Sects Commons](#), [Mass Communication Commons](#), and the [Organizational Communication Commons](#)

Recommended Citation

Arkansas Baptist State Convention, "April 28, 1955" (1955). *Arkansas Baptist Newsmagazine, 1955-1959*. 214.

https://scholarlycommons.obu.edu/arbn_55-59/214

This Book is brought to you for free and open access by the Arkansas Baptist Newsmagazine at Scholarly Commons @ Ouachita. It has been accepted for inclusion in Arkansas Baptist Newsmagazine, 1955-1959 by an authorized administrator of Scholarly Commons @ Ouachita. For more information, please contact mortensona@obu.edu.

ARKANSAS BAPTIST

BAPTIST OFFICIAL STATE PAPER

VOLUME 54

LITTLE ROCK, ARKANSAS, APRIL 28, 1955

NUMBER 17



Christian Home Week

May 1-8

Page Three

Louis C. Williams

John Cotton Forced To Resign As Vicar of Church of England

LONDON, May 7, 1633 (BP).—John Cotton, for twenty-one years vicar of the Church of St. Butolph's at Boston, England, has been forced to resign because of his Puritan beliefs, it was learned here today.

St. Butolph's is one of the most beautiful and influential churches in the Church of England. Cotton was appointed vicar there in 1612 when he was only twenty-seven years old. A scholar and preacher of unusual talent, he attracted the attention of church authorities almost from the time he entered the ministry.

Cotton fled here from Boston last year when he was summoned to appear before the Church of England's Court of High Commission to answer for his unorthodox conduct. Cotton revealed today that he has submitted his resignation to his bishop.

About three years after Cotton was appointed to St. Butolph's, he began to omit certain forms and ceremonies from the services of the state church in favor of Puritan beliefs and practices. Gradually he all but abandoned the ritual of the state church, with at least some approval from the congregation.

Ecclesiastical authorities censured Cotton's activities but at first no official action was taken. His bishop showed unusual leniency and it is believed that Cotton had the

support of King James himself in his non-conformity.

Born in Derbyshire in 1584, Cotton is the son of devout parents. He evidenced a keen intellect in childhood and became a student at Trinity College, Cambridge, at the age of thirteen. He received his master's degree when he was twenty-two, excelling in Hebrew. Primarily for his proficiency in the biblical tongue, Cotton was awarded a fellowship to Emmanuel College.

Emmanuel is the most strongly Puritan of all the Cambridge colleges, and doubtless it was there that the young ministerial student first embraced the doctrines of the independent church. Cotton remained at Emmanuel six years, becoming dean and first attracting attention as a preacher at St. Mary's Church. He was ordained as a priest in 1610.

Cotton is expected to follow other Puritans to America where many have fled in recent years to escape the persecution of the state church. He traveled from his church at Boston to Southampton to preach the farewell sermon when John Winthrop and his band of Puritans sailed for New England in search of religious freedom three years ago.

Copyright 1955, by Historical Commission,
Southern Baptist Convention

—17th Century Baptist Press.

The Choice of Moses

A Devotion By The Editor

"Choosing rather to suffer affliction with the people of God."

Destiny is determined by choices. One's place in history is determined by one's choices; because the contribution which one makes to the life of the world depends upon the choices one makes.

The name of Moses would never have been written upon the pages of history, but for the choice which he made, a choice which changed the history of a nation. The choice which Moses made was not only the pivotal point in the life of Moses, it was also the pivotal point in the life of Israel.

It is easy to visualize Moses as he considered two courses of life which were open to him, appraising the value of each and weighing the rewards of each. His choice was not based upon the immediate view, what was most conspicuous and apparent. He saw beyond the present day, he saw beneath the surface values, he looked for the rewards which would endure. He asked not, "what shall I receive at the end of the day?" but, "what shall I receive at the end of the years?"

Moses saw clearly the contrast between the court life of Egypt and the slavery which the people of God were suffering. In the Egyptian court was concentrated the shams and corruptions of human ambition and arrogance; in the life of enslaved Israel reposed the elemental values and virtues by which the race would survive.

Beyond the two courses of life which were open to Moses, beyond the two peoples, with one of which he must choose to cast his lot, Moses saw him who is invisible.

It is only by the light of God that one is able to see the cheapness of worldly attractions on the one hand, and the inestimable worth of eternal values on the other hand.

Suppose the movie theatre was flooded with sunlight. The scene on the screen would grow dim, the characters would be uninteresting, the performance would be a complete failure. The sunlight must be shut out to make the show worth seeing. The only chance for the garish shows of the world to lay claim to attractiveness is to shut out the light of God. For in the light of God the temporal pleasures of sin are seen in their ugliness and become repulsive.

"By faith Moses, when he was come of years, refused to be called the son of Pharaoh's daughter; choosing rather to suffer affliction with the people of God, than to enjoy the pleasures of sin for a season" Hebrews 11:24, 25.

ARKANSAS BAPTIST

107 BAPTIST BUILDING, LITTLE ROCK, ARK.
Official Publication of the Arkansas Baptist
State Convention

B. H. DUNCAN EDITOR
MRS. HOMER D. MYERS ED. ASST.

Publication Committee: Don Hook, Malvern, Chairman; Ernest Baker, Ola; Byron King, Tuckerman; G. W. Hayes, Conway.

Published weekly except on July 4 and December 25.

Entered Post Office, Little Rock, Arkansas, as second class mail matter. Acceptance for mailing at special rate of postage provided in Section 1132, October 1, 1913.

Individual subscription \$2.00 per year. Church Budget, 12 cents per month or \$1.44 per year per church family. Family Group (10 or more paid annually in advance) \$1.50 per year. Subscriptions to foreign address \$2.50 per year. Advertising rates on request.

The cost of cuts cannot be borne by the paper except those it has made for its individual use.

Resolutions and obituaries published at five cents per word. One dollar minimum.

Articles carrying the author's by-line do not necessarily reflect the editorial policy of the paper.

Why Change The Name?

(Continued from Page Three)

have a purely geographical meaning, but it does have a very great geographical significance. We reproduce below a discussion of the same question by Dr. S. H. Jones, editor of the *Baptist Courier* of South Carolina:

Change the Name?

"Should the name of the Southern Baptist Convention be changed? That question is being discussed rather widely, as it has been for several years. We do not intend to set forth here any exhaustive treatment of the 'pros and cons;' but we do wish to register the opinion that no change in name is necessary or desirable.

"So far as we have been able to study the question, no adequate reason for a change has been offered; and no satisfactory name has been suggested by those who advocate a change. To be sure, the present name has its limitations; but any other name would be imperfect also.

"It is easy to understand why some people who live in the north or far west may be a bit uneasy with the name 'Southern;' and it is evident that the name no longer carries a purely geographical meaning, if it ever did. Still the name is distinctive. It distinguishes us from all the other Baptist bodies, as any name we might choose should do. It is a good name and one that has been made honorable by decades of use, and it is respected by all who know that for which it stands. Moreover, those who use it most know what it means,

"Surely, Southern Baptists have too much important work to do for them to be justified in using up time and energy trying to think up another name and get it adopted."

What Can I Do?

By CHARLES A. WELLS

Many young Christians today find themselves in uniform, a part of armed power and violence in far-off areas of the world. How can a young Christian in uniform bear witness under these circumstances, where alcoholism and vice are often more prevalent among officers and men than the Christian tenets? This challenge has been met in a remarkable way in Korea where American soldiers have dug into their pockets to pay for food, clothing, and shelter for Korean war victims and have given thousands of hours of their time to aid helpless civilians. Many GI's re-wrapped the Christmas presents they got from home and gave them to needy Koreans during the Christmas parties that every U. S. Army unit in Korea staged for orphan children and others in want.

Under the program called Armed Forces Assistance to Korea and with a starting budget of \$15 million of U. S. aid funds, plus the hearts and hands of the GI's it has been possible to build schools, churches, hospitals, homes, orphanages, roads and other helpful community projects undertaken by GI's with the co-operation of able-bodied Koreans. The GI's were not assigned to these duties but contributed their free time. Such efforts have made a shambles of the Red propaganda charges that all U. S. troops are blood-thirsty capitalist villains—and have exposed the brutal performances of the Communist tyranny itself above the 38th parallel, as no propaganda of our own could have done. Despite the atmosphere of distrust, deceit, wastage and violence that militarism fosters, the nature of our Christian culture, for all its shortcomings and faults, glows forth upon a dark and despairing world through the actions and attitudes of thousands of American boys who are the products of Christian homes.

—Between the Lines.

From The Editor's Desk

Christian Home Week

The week of May 1-8 is designated as Christian Home Week. It is not intended to suggest that the home should be Christian during this one week alone, but the week is so designated in honor of Christian homes which are Christian throughout the year. It is to recognize the value of the Christian home in modern civilization and to emphasize its contribution to human society.

It is not enough to say that a home is Christian if the father and mother and the children who have reached the years of accountability are professing Christians and members of some church. Sadly enough there are many such homes that show little indication of genuine Christianity. A Christian home requires far more than a mere profession of faith and membership in a church. That would make a good start, but if it stops there the home is left without many of the essentials which would make it Christian.

There must be a genuine devotion to the Lord in the home for it to claim to be genuinely Christian. Of course, that devotion should be practiced by the parents first of all. The Lord should be considered the head of the family. His presence, His power, His love, His precepts and examples should be made paramount in the home. When this is done, the children of the home may be easily led to the same devotion to the Lord Jesus as is demonstrated in the life of the parents.

There must be love and devotion among the members of the family for each other. Quarrelsomeness, irritability, and envy among the members of a family will not only disrupt the family devotion and love for each other, but it will seriously affect the love and devotion to the Lord Himself.

Christian ideals must prevail in the home, ideals of honesty, integrity, sobriety, and

virtue. Where these ideals exist, it will be easy to follow the precepts and examples of Jesus.



together
they build
the Kingdom

Worship is an important feature in the life of the Christian home. The family which worships at home will find the worship at church richer and more rewarding. Participation in Christian activities as sponsored by the church are essential to the Christian home. It would seem illogical that the home could be thoroughly Christian when the members of the family took no part in Christian activities. The devotions of the Christian home to the Christian ideals will inevitably lead to active participation in the program of Christian activities and service sponsored and promoted by the church.

All these features of the Christian home are so interwoven that they constitute the home and become inseparable.

May God give us more Christian homes and make our present homes more genuinely Christian.

Why Change The Name?

What is wrong with the name Southern Baptist Convention? What would be gained by changing the name of our Convention?

The name "Southern Baptist Convention" has an enviable history, rich in singular devotion to the Bible and to Jesus Christ as the head of the church. It has a rich history in the growth and development of practical methods and organizations for the promotion of the work of the kingdom of God as Southern Baptists interpret that work. The history of the Southern Baptist Convention is rich in sacrifices which have attended the progress and growth of the Southern Baptist constituency. It is rich in the names and personalities of the great men of God who have grown up and wrought powerfully within the fellowship of the Southern Baptist Convention. That history is rich in the bestowal of the blessings of God and the

abundance of His grace.

The Southern Baptist Convention is "southern." Whether it has reached out to the West or into the North, wherever the reach of the Southern Baptist Convention goes it carries a southern atmosphere and a southern flavor and a southern enthusiasm and loyalty to God's Word.

It is this very southern spirit that has caused the creation of Southern Baptist churches throughout the West and the North. Southern Baptists have moved into these areas and they have established Southern Baptist churches. They carry with them the distinctive characteristics of the South.

And for the foreseeable future, at least, the principle strength of Southern Baptists, so far as numbers are concerned and so far as financial ability is concerned, will be concentrated in the South. The name may not

(Continued on Page Two)

A Sample of What We May Expect In America

It is the same story all over the United States. The Catholics are fighting for public school funds, for the transportation of Catholic children to parochial schools. And for other considerations favorable to their parochial schools. In many cases robed nuns are paid public school funds as public teachers and in many of these cases the schools are being taught in Catholic school buildings on which rent is paid by the state.

We have sounded the alarm time and time again in the columns of the **Arkansas Baptist**. Arkansas and the other states may wake up one day and find it too late to protest.

We give an example of what may happen in America if the people do not wake up to the menace which threatens our public school system. The example is that of Belgium as reported in **Report from the Capital**, April 1955:

"In Belgium, Roman Catholics had been in political control for decades up until last year. During that time Catholic schools were expanded systematically, but State schools were not given an equal chance, with the result that about 934,000 of Belgium's 1,600,000 school children are in Roman Catholic schools. In the words of one leader in the present government, 'The coffers of the State were at the disposal of the religious schools without end and often without control'."

Protesting the cut in state subsidies for parochial schools, the Catholics organized a demonstration in which it was estimated that sixty thousand persons thronged into the city of Brussels, the state capital. The demonstration was led by the president of the Christian Social Party which is the Catholic party. We quote from the **Roman Catholic Journal, America**, which put it this way:

"As in countless other countries, including our own, the school question is crucial for Catholics in several Western European countries at the present hour. Up to a fortnight ago, however, feelings have not taken the extreme form that Brussels witnessed on March 28. On that date the Belgian capital was the scene of a mass Catholic protest against the Government's proposed educational reform law. Despite the mayor's ban and despite deliberate curtailment of transportation, an estimated 60,000 demonstrators thronged into the city. The protests were the culmination of a four-weeks' series organized by the Catholic Committee for Freedom and Democracy. The Brussels climax was led by the President of the Christian Social party and by the head of the Confederation of Christian Trade Unions. Though punctuated by arrests and relatively minor violence, the demonstration was termed a success by its organizers.

You may think it may never happen in America. You and I may not live to see it, but if the trend continues as it is going now, America will one day experience just such a demonstration and such a demand for parochial school support. You will note that it is said that "state schools were not given an equal chance, with the result that about 934,000 of Belgium's 1,600,000 school children are in Roman Catholic schools."

Kingdom Progress

Arkansas Students At Southern Seminary, Louisville



FIRST ROW, reading from left to right: Reba Hobby, Muriel Evans, Mrs. Jimmie Dodd, Mrs. P. C. Church, Mrs. Charles Ragland, Mrs. Gilbert Nichols, Mrs. Lloyd Sparkman, Mrs. James Walker, Ila Westerman.

STANDING: James Conard, Marvin Tate, Jimmie Dodd, P. C. Church, Charles Ragland, Gilbert Nichols, Lloyd Sparkman, James Walker and Steve, Conway Sawyers.

NOT PICTURED: George Balentine, Joseph Callaway, Jerry Davis, Wallace Denton, Thomas Haley, Joe Hall, Alex Hamil, Bobbie J. Knight, Rosemary Limbert, Pierce Matheny, John McClanahan, Rhine McMurry, Douglas Nelson, Jesse Nutt, Jr., George Pirtle, Jr., Darell Ross, B. B. Steele, William Stratton, Lucien Coleman, Jr., Earl McQuin.

FACULTY MEMBERS FROM ARKANSAS: Morris Ashcraft, Biblical Archeology; Derward W. Deere, Visiting Professor of Old Testament Interpretation; Theron D. Price, Church History; Wayne Ward, Theology.

Southern College Honors Two Board Members

Acting upon provisions in the charter, the Board of Control of Southern Baptist College awarded lifetime honorary membership to Claud Layne, Malden, Missouri, and to Fred Carter, Lake City, at a luncheon for the Board at the college Monday, April 18.

Both awards were made for outstanding contributions and services to the college.

The award to Mr. Layne, made in absentia because of his illness, was read by A. C. Rudloff, former pastor of Mr. Layne and now business manager of Southern. James Birkhead, pastor and friend of Mr. Fred Carter, read the award to him. President H. E. Williams presented the awards.

Another special event of the meeting was the showing of the architects drawing of the new administration building. Construction on this building is expected to begin soon.

Dr. John E. Steely, Dean of Administration, made a report to the Board on the modification of and the use of present buildings, upon the progress of the Living Endowment Fund, and upon the plans for the new buildings.

Home Mission Construction Is Approved

The construction of two mission buildings and the purchase of a mission site was authorized by the Home Mission Board Executive Committee in its April meeting.

A church building will be erected for the Chinese Baptist Church, Los Angeles, California. This church has been meeting in

Body of Missionary Found in Wreckage

Blonnye H. Foreman, 55, missionary to South Brazil, died in an airplane crash in the mountain section of the state of Goias. Foreman's body and the totally wrecked plane were discovered April 19, near the city of Goiania by the Brazilian Air Force which had been searching for the missionary for several days.

The Brazilian Air Force estimated that the crash occurred on April 6. Mr. Foreman was a native of Rose Bud, Arkansas. He was appointed by the Foreign Mission Board in 1934 as educational-evangelistic worker in the Baptist Industrial Institute in Corrente, Piaui, Brazil. In 1950 he was made field missionary for the interior of the state of Goias.

Mr. Foreman is survived by a sister, Mrs. R. D. Hall, of Las Cruces, N. M.

rented buildings. Thomas Lowe is pastor.

A Gallup, New Mexico, Indian Center will be built with funds furnished by the Annie Armstrong Offering. Rev. and Mrs. Russell Bowren are the missionaries in charge of the Center. Construction of the building is expected to begin soon.

In Philadelphia, Mississippi, land has been purchased by the Home Mission Board preparatory to the construction of an Indian Center. Rev. and Mrs. Horace Fisher are general missionaries to the Indians in this area.

An allocation was set aside in the 1955 Annie Armstrong Offering by the Woman's Missionary Union to build the Mississippi Indian Center.

Your Mother's Day Offering

Your Mother's Day offering for the Baptist Hospital in Little Rock is exclusively for charity. This offering provides the opportunity for the Baptists of the state to share in the hospital's ministry to those persons who need hospitalization but are unable to pay for it.

Your offering may provide hospitalization for a child who would otherwise be doomed to a life handicapped by some disability which hospitalization could correct and give that child a normal life. Your Mother's Day offering might provide hospitalization for some mother which would restore her health and return her to her family able to take care of her children. Your Mother's Day offering might provide hospitalization for some father which would restore him to health so that he could provide for his family. Your Mother's Day offering might provide for some aged person which would give them a new lease on life.

The Mother's Day offering provides Arkansas Baptists with the opportunity of restoring life and health to people who desperately need your help in a time of crisis. Without your help such people may be doomed to death or to invalidity for the remainder of their lives. It provides Arkansas Baptists with the opportunity of providing hope for the hopeless, health for the sick, and life for those who might not live except for your help.

The hospital is doing a great amount of charity work and Arkansas Baptists as a whole have had a very small part in this ministry of mercy. The Baptists of the state should have a larger share in the charity work of the hospital than they have had in the past. If all Arkansas Baptists would participate in this Mother's Day offering for the hospital, it would lift a tremendous load from the hospital itself and would serve as a ministry of mercy and hope for hundreds of people who are now denied the ministry which the hospital is anxious to provide but for lack of funds is unable to provide.

The ministry to the sick who are unable to pay for their hospitalization or the services of doctors and surgeons is clearly taught by Jesus by both precept and example. Jesus said, "The poor you have with you always." He said that we might do good to them at any time we had the opportunity. We have His commendation for helping those who cannot help themselves.

The Mother's Day offering provides you and me with the opportunity of entering into a sympathetic understanding of those who need our help and to be generous in our contribution to their need. Consider what it would mean to you if you were in the same circumstances as many other people who need hospitalization but cannot pay for it. You would be forever grateful to friends who were generous enough and sympathetic enough to provide that which you could not provide for yourself.

Be generous, won't you, on May 8 and make a worthy offering on this Mother's Day for the charity fund of the hospital.

—Editor

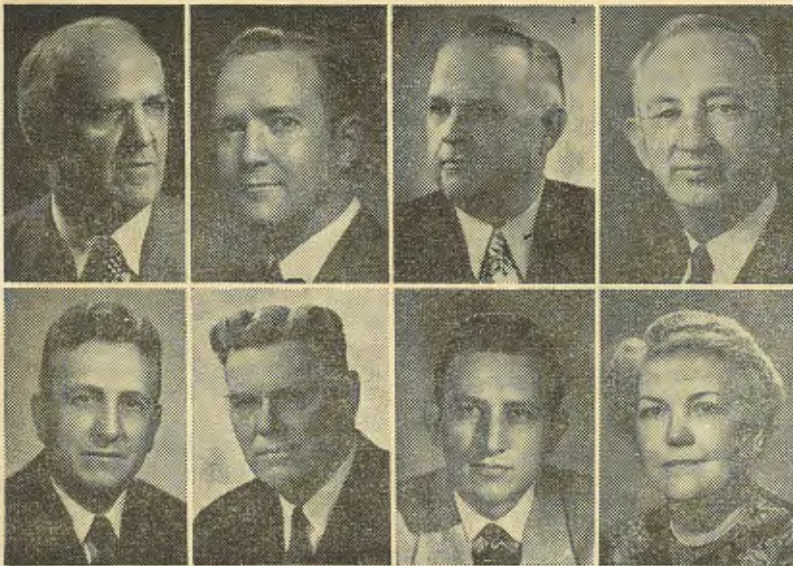
—000—
In 1954, 35,500 Americans were killed in traffic accidents.

—000—
In 1954, nearly two million casualties were recorded for motor vehicle accidents.

—000—
Speeding on U. S. streets and highways last year killed 12,380 men, women and children.

Program Speakers At So. Baptist Convention

Southern Baptist Officers



Speakers and leaders on the program of the annual session of the Southern Baptist Convention at Miami, Fla., in May include, top row, left to right, R. G. Lee, speaker, Pastors' Conference; Monroe F. Swilley, Jr., convention sermon; U. S. Sen. Robert S. Kerr, convention speaker; C. E. Matthews, Pastors' Conference speaker; second row, left to right, Perry F. Webb, Sr., convention speaker; Wallace Bassett, Pastors' Conference speaker; Howard E. Butt, Jr., youth rally speaker, and Mrs. George Martin, president, Woman's Missionary Union. — BAPTIST PRESS.



Officers of the Southern Baptist Convention who will be in charge during the annual session at Miami, Fla., in May are, top row, left to right, J. W. Storer, president; Homer G. Lindsay, first vice-president; James W. Merritt, senior secretary; Oliver R. Shields, second vice-president; bottom row, left to right, Joe W. Burton, secretary; Porter W. Routh, executive secretary and treasurer, Ramsey Pollard, chairman of Pastors' Conference, and Forrest H. Heeren, director of music.—BAPTIST PRESS.

Relief and Annuity Board Offers New Plan

Southern Baptist Protection Plan is the new retirement program offered by the Relief and Annuity Board. The Protection Plan replaces the Ministers Retirement Plan, which was closed to new members July 1, 1954.

The Protection Plan offers five major benefits: Normal age retirement annuity at 65; disability annuity; widow's annuity, whether member's death occurs before or after retirement; commuted annuity at age 60; and lump sum death benefit.

All benefits have been enlarged. Age retirement annuity will no longer have a ceiling, but will be based on the number of years the member participates. A credit of 1½ per cent is given for each year of service while in the Plan. Maximum salary on which the member may pay dues remains \$4,000 per year.

Widow's annuity will be based on the member's normal retirement annuity; it may run as high as 40 per cent of his annuity. Disability annuity has a maximum of \$900. Lump sum death benefit is twice the annual annuity if member leaves no wife.

A new point in the Plan is the allowance for paying on a reduced salary basis. That is, if the member earns, say, \$300 per month, he may pay on a smaller salary, say \$150 per month, and retain his protection on that basis.

There will be no delinquent dues at the end of the year, but the salary credited to the member for that year will be based on the amount of dues he has paid. Cost of the new plan is 5 per cent for the member—5 per cent for the church—5 per cent for the state convention.

Further information and application blanks may be obtained from your state executive secretary or directly from the Relief and Annuity Board, Baptist Building, Dallas, Texas.

Arkansas Baptists Write For Baptist Board

Two Arkansas Baptists contributed lesson materials to Training Union periodicals of the Baptist Sunday School Board, Nashville, this quarter.

Mrs. Fred Love, of Norphlet, is one of the writers for the **Nursery-Beginner Leader**. She prepared the lessons for April on "God's Gift of Sunshine," "God's Gift of Water," "God's Gift of Growing Things," and "God's Gift of Animals."

Mrs. Love, a teacher in the First Baptist Church kindergarten, El Dorado, has had wide experience in Training Union work. She was the approved worker for the Arkansas Baptist Training Union Department in 1952-53, and has served as Beginner Department leader at Training Union conferences at Ridgecrest Baptist Assembly, N. C.

Dr. Andrew M. Hall, pastor, First Baptist Church, Fayetteville, wrote the Training Union lesson for May 22 in the **Baptist Adult Union Quarterly**, on "Baptism: A Symbol or a Saving Medium?"

Dr. Hall is also a contributor to **Open Windows**, the Board's devotional quarterly, articles for newspapers and religious papers and journals.

These periodicals are two of eleven prepared by the Training Union Department of the Sunday School Board. The **Baptist Adult Union Quarterly** has a quarterly circulation of 855,255 copies.

Mark Distribution of 40 Million Scripture Volumes to Armed Forces

Distribution of 40,000,000 volumes of Scripture to men and women of the armed forces by the American Bible Society was marked in a ceremony at the Pentagon.

Richard H. Ellingson, a secretary of the society, presented a New Testament to Adm. Arthur W. Radford, chairman of the Joint Chiefs of Staff.

Chaplains of all branches of the armed forces and local and national church leaders were present.

Ministers Ordained

William Standiford and Doyle Echols were ordained to the gospel ministry by the Park Place Church, Hot Springs, Sunday, April 3.

The examination was conducted by Hugh Cooper of Arkadelphia. The ordaining prayer was offered by Joe Melton of Hot Springs. The sermon and charge were delivered by State Missionary Jesse Reed of Benton. Pastor James H. Fitzgerald presented the Bibles.

Mr. Standiford and Mr. Echols are students in Ouachita College, Arkadelphia. They are serving as pastors in the Southwestern part of the state.

Ouachita Builds Men's Dormitory

Final approval is expected to be made soon on the loan for the construction of a new men's dormitory at Ouachita college, according to information released by Dr. Ralph Phelps, president of the college.

Preliminary allocation of funds and final application for the \$300,000 loan for the building have been made and work will start as soon as final approval is received, Dr. Phelps stated.

The building will be red brick in modern "L" design and will match the other buildings on the campus in general style.

The three-story structure will be designed to accommodate 100 men. Each room will house two men and will be equipped with a lavatory as well as built-in desks, wardrobes and chests of drawers. There will be central shower rooms for the use of all occupants.

The building will be located on a high hill overlooking the Ouachita river on the site of old Wallis Hall.

Dr. Phelps stated that he hopes the dormitory will be ready for occupancy for the fall semester this year, and that "we are trying to accommodate as many men as we can with the money and still be consistent with good housing standards."

★ ★ ★ Christian Horizons ★ ★ ★

By Religious News Service

Sunday Bill Passed in Colorado

The Colorado legislature wound up its sessions with only one of a host of measures supported by church groups clearing all legislative hurdles to full passage.

That was a law requiring the Sunday closing of automobile lots and sales rooms in the state's larger counties.

It was backed by church groups on the ground that they ought to support any measure which tends to increase the dignity of the Lord's Day.

Complete Arrangements For Graham Rotterdam Rally

Final arrangements for Dr. Billy Graham to conduct a rally June 30 in Rotterdam's Feijenoord Stadium, largest in the Netherlands, were completed at a meeting between representatives of the American evangelist and a Netherlands national committee.

Some 65,000 Dutchmen and Belgians are expected to attend the evangelistic meeting.

Washington Merchants Ask Crackdown On Sunday Sales

The Merchants and Manufacturers Association has asked the District of Columbia Commissioners to crack down on Sunday shopping.

Herbert J. Rich, president, said the group had asked its members to keep their places of business closed on Sunday and nearly all have complied. But a minority of stores are remaining open and expanding their Sunday "bargain day" sales, he said.

East German Youths Flock to Churches

East German Christians crowded Soviet Zone churches despite Communist efforts to discourage Easter's observance as a religious holiday.

Youth, a prime target of Communist propaganda in recent months, was particularly well-represented in the churches.

Kansas Supreme Court Upholds Movie Censorship

The Kansas Supreme Court ruled that state authorities have the power to censor movies.

Constitutionality of the Kansas law under which state censors banned "The Moon Is Blue" had been challenged by movie distributors in the Wyandotte County district court.

District Judge Harry Miller's decision that such censorship was unconstitutional was reversed by the Supreme Court.

Believe Peron Regime Will Disestablish Catholic Church

Observers in Buenos Aires believe it is a foregone conclusion that the Peron regime will separate the Roman Catholic Church from the State.

Their views are supported by the growing intensity of the campaign by pro-Peron newspapers for a constitutional change disestablishing the Church.

These dailies—*Democracia, La Prensa,*

Critica, Epoca—normally reflect government thinking. It is thought likely that a constitutional change will be sought shortly after the Congress reconvenes.

Revival in China

Despite continued pressure by the Communist government, there is evidence of a growing vitality among Christian churches in China today.

In apparent defiance of their Communist masters, hundreds of Chinese are joining churches each year and reports indicate a limited expansion of some church activities.

This is the picture of Chinese churches presented today by the Rev. Dr. Francis P. Jones, for 36 years a Methodist missionary-educator in Nanking, and editor of the *China Bulletin*, published bi-weekly by the National Council of Churches.

Communists Map Campaign to Spread 'Scientific Atheism' Propaganda

Plans for spreading "scientific atheistic" propaganda on a national scale in Communist-ruled countries of Europe were mapped at a conference in Prague.

The meeting was attended by cabinet ministers, politburo members and delegates from atheistic organizations in the Soviet Union and its satellites.

According to the Prague Radio, the gathering of anti-religious propagandists was held as part of a national congress sponsored by the Czechoslovak Society for the Promotion of Political and Scientific Knowledge.

Such societies have been set up in the various Communist countries to promote the "scientific atheism" concept launched by Soviet officials last November.

Dr. Blake Urges Protestant Editors Be Positive

Dr. Eugene Carson Blake of Philadelphia, president of the National Council of Churches, appealed for a "positive" emphasis in sermons as well as editorials and other material written by church press editors.

"Looking at what is wrong instead of what is right is one of the great weaknesses of the Church," he said. "We need to pay more attention to saying positively the things we believe than saying negatively the things we deplore."

Editors Told America's Religious Revival Not 'Phony'

America's religious revival is "not phony, it's genuine and it's deep," in the opinion of Dr. Joseph R. Sizoo, head of the Department of Religion at George Washington University, in Washington, D. C.

"You don't have to travel far in America today to discover that a poignant sense of wistfulness is abroad in our land—the search for God is on," Dr. Sizoo declared at the 36th annual meeting of the Associated Church Press.

He participated in a discussion of "Current Trends in the Religious Life of the American People," at a dinner session.

A Smile or Two

The young lady walked boldly up to a woman whom she took to be the matron of the hospital.

"May I see Lieutenant Barker, please?" she asked.

"May I ask who you are?"

"Certainly, I'm his sister."

"Well, well. I'm glad to meet you. I'm his mother."

Susan was not much inclined to say her prayers one night. "Surely," her mother said, "you ought to say your prayers happily, to give thanks for all the good things you have, Susan. Think of all the children without nice homes, or clothes, or good food, or loving parents to take care of them."

"I do think of them," replied the girl, "and it seems to me they're the ones who ought to say their prayers." —Quote.

The master of the house rang for the maid. The girl was in the act of cleaning pots and pans, and, before she could tidy herself, her employer entered the kitchen to see what was delaying her.

He looked at her dirty hands and face. "My word, Mary," he said, "But you're pretty dirty, aren't you?"

Mary smiled coyly, "Yes, sir," she replied, "but I'm prettier clean."

It was necessary to give three blood transfusions to save a girl's life, and a healthy young Scot came forward. For the first pint of blood the patient gave him \$50. For the second pint she gave him \$25. The third time she had so much Scotch blood in her that she merely said thank you.

The dude and hillbilly were both rank privates and occupied adjoining bunks in the barracks. One day the dude inspected his toilet kit, glanced at his neighbor and demanded sharply: "Did you take my toothpaste?"

"No, I didn't take no toothpaste," came the answer. "I don't need no toothpaste. My teeth ain't loose."

Bill had just returned to his home in Brooklyn from a vacation in Texas. He greeted his wife by giving her several mink coats, 4 Cadillacs, and scads of money.

"How in the world did you get all these things?" she demanded.

"Shucks, honey, it was easy. I was in Houston during Hallowe'en, and went out playing trick or treat." —Quote.

He: "I'm sorry for you, having to be a waitress in this place."

She: "Oh, I don't eat here."

She: "You seem to be an able-bodied man. You ought to be strong enough to work."

Tramp: "I know, mum. And you seem to be beautiful enough to go on the stage, but evidently you prefer the simple life."

She: "Step into the kitchen, and I'll see if I can't stir up a meal for you."

The professor had called at nine shops in town for his lost walking stick and had found it in the tenth.

"Thank you so much, indeed," he beamed, as he took possession of it. "Do you know, this must be one of the few honest places in town? I've called at nine shops already, and in each I was told that they hadn't got it."

News From Baptist Press

Churches Build More, Borrow More in 1954

Southern Baptist churches were busy constructing many new buildings last year but they also were getting further into debt than ever before.

This picture is seen in a report of Southern Baptist churches prepared by the Department of Survey, Statistics, and Information of the Sunday School Board.

The financial picture and other Southern Baptist statistics will be published in the 1955 *Southern Baptist Handbook*. The *Handbook* should be ready for distribution at the Southern Baptist Convention session in Miami, Fla.

The debt of Southern Baptist churches more than doubled in 1954, reaching the highest point ever recorded at \$138,349,754. The rise may be considered significant since between 1952 and 1953, church debts increased only 17.6 per cent.

The office of J. P. Edmunds, head of the statistical department, said that debts in 1953 were \$67,663,824.

Paralleling this increase is a rise in the worth of property of the 29,899 Southern Baptist churches. Last year, property of these churches was worth one and one-sixth billion dollars, a 13.9 per cent increase over the 1953 valuation.

The amount which churches rose in value in 1954 was fixed at \$142,256,924, the greatest recorded increase in a year's time.

In percentage terms the 13.9 per cent increase was far below the 22.8 per cent gain in property value from 1947 to 1948. However, the actual monetary increase between those years was only \$83,000,000.

Other facts gleaned from the new report are:

Southern Baptists now number 8,169,491. They gave \$305,573,654 to all causes last year, including \$52,926,157 to missions and benevolences. Based on total contributions, per capita giving was \$2.04 greater than it was in 1953.

More Baptists took part in soul-winning during 1954 than they did the two years before. It took 20.6 Baptists to lead one person to Christ last year compared with 21.8 in 1953 and 21.5 in 1952.

Gains in Sunday school enrolment, church membership, Vacation Bible School enrolment, Training Union enrolment, Brotherhood membership, and Woman's Missionary Union membership were recorded.

There was a greater increase in non-resident church members than in resident members in 1954.

No More Applications

The Baptist World Alliance office has announced it is not processing World Congress applications which came in after April 4.

The office of General Secretary Arnold T. Ohrn said "it looks like we may have reached the end of the registrations." The Congress is scheduled in London in July.

Stockholm Church Calls BWA Youth Secretary

Joel Sorenson, youth secretary of the Baptist World Alliance, has accepted the pastorate of the First Baptist Church, Stockholm, Sweden. He will begin duties October 1.

The Baptist World Congress, meeting in London, England, in July will select a successor. Sorenson has served as youth secretary since 1950.

New Baptist Convention Is Under Consideration

Southern Baptist churches in Wyoming, Colorado, Montana, South Dakota, and North Dakota have been considering organizing themselves into a separate convention.

Representatives from the churches were to meet at Casper, Wyo., April 25-27 to further consider bringing the convention into being later this year.

The new convention would be similar to state Baptist conventions already existing and would be the twenty-sixth to affiliate with Southern Baptists.

Churches in the five states are now affiliated with the state Baptist convention in Arizona.

Southern Baptist churches in Idaho, Utah, and Nevada, also were to meet in April—at Salt Lake City, Utah. However, they did not plan to consider forming a separate convention until they are stronger. They also are presently affiliated with the Arizona convention.

Special Groups Dine Together At Convention

Many special meetings have been scheduled by organizations during the session of the Southern Baptist Convention. The first of them is set for May 17.

Reservations for these meetings should be made at the earliest possible date through Maurice Fain, 1141 Normandy Drive, Miami Beach. Deadline is two weeks before the Convention, which opens May 18.

Following is a list of the special meetings, the dates and times they will be held, and where they will be held:

Tuesday, May 17

State Secretaries Dinner—7 p.m., Adriatic Room, Seven Seas Restaurant.

Wednesday, May 18

Southern Baptist Chaplains Association—7 a.m., Bayview Room, McAllister Hotel.

State WMU Workers—1:30 p.m., University Baptist Church.

Thursday, May 19

Southeastern Seminary—7:30 a.m., Pan-American Room, Columbus Hotel.

Southwestern Seminary—7:00 a.m., Top O' the Columbus Hotel.

Southern Seminary—1:30 p.m., Bayfront Park Auditorium.

Baptist Public Relations Assn.—1:30 p.m., Santa Maria Room, Columbus Hotel.

Baylor University—1:30 p.m., University Baptist Church.

New Orleans Seminary—1:30 p.m., Bayview Room, McAllister Hotel.

Foreign Missionaries—1:30 p.m., Flagler Room, McAllister Hotel.

Carson-Newman Alumni—6:00 p. m., Riverside Baptist Church.

Friday, May 20

Ouachita College—7:30 a.m., University Baptist Church.

Stetson University—1:30 p.m., Riverside Baptist Church.

Saturday, May 21

Educational Directors—7:00 a.m., University Baptist Church.

This schedule does not include any meetings other than dinner or breakfast meetings.



Denominational Calendar

- May 1-8—Christian Home Week
- May 2—W.M.U. Day of prayer for Community Missions
- May 3—Training Union Leadership workshop for Juniors and Intermediates, First Church, Little Rock
- May 5-6—Church Library Clinic and Audio-Visual Aids Workshop, First Church, Little Rock
- May 6-7—State R.A. Congress, Little Rock
- May 8—Mother's Day. Offering for Charity Work in Baptist Hospital
- May 8-14—G.A. Focus Week
- May 10-13—Commencement Week, Southwestern Seminary, Ft. Worth, Texas
- May 13—Commencement Exercises, New Orleans Seminary
- May 15-17—Southern W.M.U. Annual Convention, Miami, Fla.
- May 17—Summer School opens, New Orleans and Golden Gate Seminaries.
- May 18-21—Southern Baptist Convention, Miami, Fla.
- May 22-23 — Baccalaureate; Commencement exercises, Ouachita College
- May 24—State W.M.U. Board meeting, Little Rock

—000—

Counselor's Corner

By DR. R. LOFTON HUDSON

Loving Enemies

Question: The Bible says for us to love our enemies. Does God expect us to love our enemies as much as we love our families and friends? Did Jesus love Judas and His enemies as much as He did His Father and His other disciples?

Answer: Yes, Jesus loved Judas. But love is not the same as like, nor the same as friendship.

Love is the warm acceptance of a person as he is. We must take people as God gives them to us. There must be interest in, concern for, and appreciation of an individual with all of his distinctive qualities.

I admit that it is hard to love those who threaten, or hurt, or dislike us. It is especially hard to love someone who has injured or made us unhappy.

Let's look at it this way. We are placed in a world of persons—children, crooks, hypocrites, saints, and God Himself. If we relate ourselves to those who are like us or who help us, we form friendships. If we relate ourselves to a person of the opposite sex about our own age, we have a courtship. But if we relate ourselves in a negative way to other persons, we have war, quarrels, isolation, loneliness, and divisions.

The Christian ideal is community. We need to belong. Only love can join that which belongs together. And love means listening, talking, serving, helping, and being helped. Love is the cement that joins those who have been separated by misunderstanding, difference in temperament, color, or religion. Love your enemies. See?

—000—

Missionary on Furlough

Miss Anna Mae Wollerman, Southern Baptist missionary to South Brazil, has returned to the States on furlough and may be addressed at 610 West Barraque Street, Pine Bluff, Ark. She is a native of Pine Bluff.

B.S.U. Spring Retreat At Ferncliff

One hundred and thirty-five college students, many of whom will serve as next school year's elected Baptist student leaders, gathered at Ferncliff Assembly, April 15-17, for the annual State B.S.U. Spring Retreat. The theme of the Retreat program, "I Send You Forth," stressed the particular responsibilities and opportunities of service of every B.S.U. officer, both on his college campus and in his local church. Representatives registered for the weekend of orientation and planning were from the campuses of Arkansas State Teachers College, Hendrix College, Arkansas A & M, Southern State, Ouachita, Little Rock Junior College, University of Arkansas, University of Arkansas Medical School, Southern Baptist College, Arkansas Baptist Hospital, Arkansas Baptist College, Arkansas State College and Arkansas Tech.

Mr. Robert S. Denny, Associate Secretary of the Southwide Student Department in Nashville, Tennessee, spoke to the group on Friday evening and on Saturday morning presented the charge to the new officers. It was a treat to hear Mr. Denny's challenging messages; to be a part of the Bible studies led by Dr. Gerald Smith, pastor of First Church, Stuttgart; and to sing under the leadership of George Starke, Minister of Music, First Church, Little Rock.

NEW EXECUTIVE COMMITTEE ELECTED

On Friday night Miss Martha Lou Turner, who served so capably as this year's State B.S.U. President, presided at a meeting of the Executive Committee to nominate the new Committee. Elected to the 1955 State B.S.U. Executive Committee were Jim

Kendrick, University of Arkansas, President; Sue Carol Price, Arkansas Tech, Representative of State Schools; Evelyn Holmes, Arkansas Baptist Hospital, Representative of Baptist Schools; Lillian Barton, Arkansas State College, Faculty Advisor; and Rev. J. H. Street, pastor of First Church, Conway, Pastor Advisor. Jim and the other members of this Committee have the support and prayers of all Baptist students as they lead in Baptist Student Union work in 1955.

One of the highlights of the Spring Retreat was the beautifully inspiring program of music presented by the Choir of Arkansas Baptist College on Saturday evening. Conference with the various unit representatives of the B.S.U. was led by Mr. Robert Dowdy, Associate Secretary of our State Training Union Department. Mr. Grover Andrews, Youth Director of First Baptist Church, Corsicana, Texas, led the social chairmen in their planning session and on Sunday morning presented a chalk talk before the preaching hour. The concluding message of the Retreat was brought by Eugene Ryan, pastor of the Forty-Seventh Street Church in North Little Rock.

Student Directors Naomia Clifton, Maxine Woods and Jamie Jones, working in conjunction with Jim Reed and Juanita Straubie, who planned the Spring Retreat, made the weekend worthwhile to each student who came to Ferncliff, hoping to take back to his campus and church an enriched Christian testimony.

*Baptist Student Union Department
Jean Protiva, Office Secretary*

—000—

Self righteousness is mighty poor religion.

Asia's Crisis Is Missionary Opportunity

"The crisis in Asia is the opportunity for Christian missions," says Dr. J. Winston Crawley, the Southern Baptist Foreign Mission Board's secretary for the Orient, who arrived in the States last week for a two months' stay.

"Asia is in the middle of a revolution — a revolution that includes every area of human life," he continued. "And this revolution is not going to stop within our lifetime. That means that there will be continued turmoil, continued crisis, continued problems and chaos for as long as we live. We can expect it.

"The revolution is not just Communist agitation; it is people who want a good life and are determined to have it. Above all, they want the other people of the world to be concerned for them as people and not just as possible allies against an enemy. Most Asians feel that America is concerned with the Communist angle and is not really concerned with helping the people of Asia to have a better life."

What is happening in Asia is basically what happened in the United States during the American Revolution, Dr. Crawley continued. "Our sympathy must be and should be with these people in their desires."

In many areas, he said, Asians are getting more of what they want. Burma, India, Ceylon, Pakistan, Indonesia, the Philippines, and South Korea have gained their independence in the past 10 years. These countries have well over 500,000,000 people.

Dr. Crawley said the revolution in Asia has two vital meanings for mission work there. First, it means that mission work is done in the midst of difficulty. And, second, the very uncertainty and chaos and crisis offer opportu-

ity. To say to Christian missions, "Do not go into Asia until the crisis is over," is to say to the doctor, "Do not go into that city until the danger of the epidemic is over," he explained.

"The purpose of mission work is to meet the needs and the opportunities of the people. The crisis in Asia has shaken the old patterns and the people are ready for the gospel. Asia is plowed ground.

"My main concern is that the people of Asia have the moral and spiritual maturity and the integrity required by their new freedoms. Our missionaries in the Orient are trying to help them have the spiritual resources to meet the demands of the day."

Dr. Crawley will be in Richmond for the April and May meetings of the Foreign Mission Board and will attend the meeting of the Southern Baptist Convention in Miami before returning to his headquarters in Singapore.

—000—

New California Co-ordinator Named

E. J. Combs, Jr., Eureka, California mission worker, was named Director of Foreign Language Missions for California at the April 7 meeting of the Home Board Executive Committee.

Mr. Combs will work under the Home Mission Board in co-operation with the Southern Baptist General Convention of California, in co-ordinating mission work among the foreign language-speaking people in that state.

He has served as general missionary in California since 1951. Prior to this, he held pastorates in California and New Mexico.

Mr. Combs is married and has three children.

GOWNS
• Pulpit and Choir •
Headquarters for
RELIGIOUS SUPPLIES


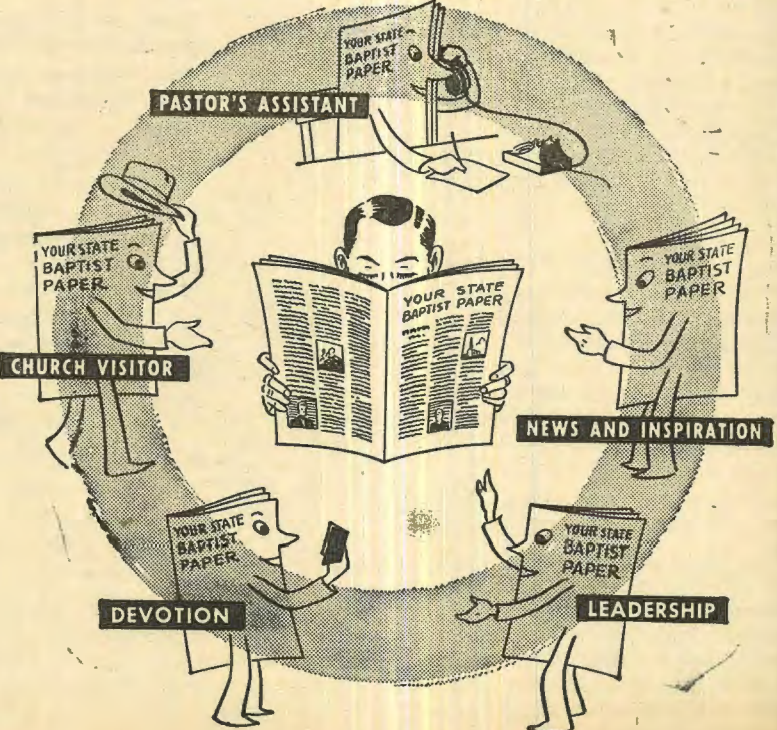
Church Furniture • Stoles
Embroideries • Vestments
Hangings • Communion
Sets • Altar Brass Goods

CATALOG ON REQUEST

National CHURCH GOODS
SUPPLY COMPANY
821 - 23 ARCH STREET, PHILADELPHIA 7, PA.

**EAST TEXAS
BAPTIST COLLEGE**
MARSHALL, TEXAS
Reasonable Rates
High Academic Standards
Moral Community
Surroundings
Spiritual Atmosphere
Friendly Campus
Well-Trained Faculty
Summer Session Begins June 6
Regular Session Begins September 12
For Information Contact:
H. D. Bruce, President

FOLDING CHAIRS
Best Quality — Reasonable Prices
ALL-STATE SUPPLY, Inc.
1401 W. Capitol Ave.
Little Rock, Ark.

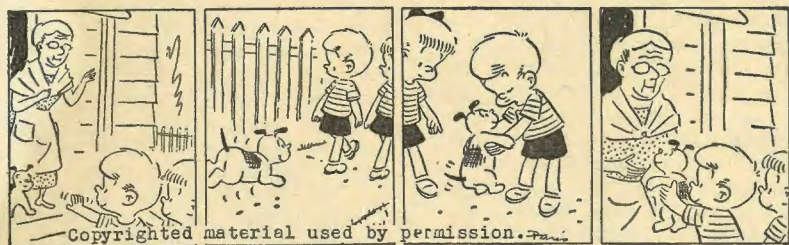



PASTOR'S ASSISTANT
CHURCH VISITOR
NEWS AND INSPIRATION
DEVOTION
LEADERSHIP

Children's Page

The Only Frog In The Pond

By ISOLE BAKER



GOOD DEED TWINS

Ozzie was a merry little tadpole, not much bigger than a bubble. He could dart, skim, and wiggle into the tiniest crevices of the rocks around the edge of the pond.

Ozzie hoped that someday he would grow up. He wanted to become a big green frog like Grandpa Croak. He grew four legs and lost his tail, and before Ozzie knew what was happening to him, he was a little frog.

As he grew Ozzie became a very selfish little frog. He wished for the day when he could leave home and find a pond all to himself. He wanted a place where he could sit on a log in the choice spot of sunshine and not be crowded by other frogs that wanted in the sunshine too. He wanted the biggest lily pad in the pond for his own. He wanted the best hiding place among the cattails if mean boys should come along.

"No frog will ever be happy if he won't associate with other frogs," warned Grandpa Croak. "You must learn to share with others and to be happy with them. Don't try to be the only frog in the pond."

But Ozzie didn't listen to the wise old frog. When he was old enough, he wandered from stream to stream looking for just the right place. Finally he came to an old mill that had been abandoned long ago. At one end of the millpond rushes were growing in the shallow water. Along one side were water lilies with big pads that looked inviting to Ozzie. There was even a log sticking out of the deep water where he could sit in the sun or dive into the deep water. Just the spot Ozzie had been looking for!

"This is where I shall make my home," he said. "I shall always be content here. I will never worry about what happened yesterday. I will never worry about what might happen tomorrow. I'll be happy the rest of my days."

Ozzie enjoyed the old mill pond that day. He took no thought of time. He leisurely swam out to the log for a sun bath, and there practiced his deep tones.

"Croak! Croak! Croak!" he

sang. Then he winked and blinked and went to sleep.

After his nap Ozzie practiced diving. The exercise made him hungry, and so he swam to the bank and had a luscious meal of insects. With no other frogs around to catch them it was easy to find plenty of insects.

When night came though, he missed Grandpa Croak's deep bass voice saying "Kerchunk! Kerchunk! Kerchunk!"

He missed the singing convention that started soon after dusk and lasted most of the night.

Everything was so very quiet at the old millpond that Ozzie couldn't sleep. He tried burying himself in the mud. He tried the biggest lily pad. He tried the old rotten log. He grew more and more restless.

"I'm lonesome," he thought, "but I don't want to go back home. Grandpa Croak warned me that I would never be happy as long as I was selfish."

Finally sunrise came. How happy Ozzie was when the long black quietness was gone. Even the splash that he made when he dived into the pond was a welcome noise to him.

After a swim around the pond, Ozzie started down the millstream to look for some companions. Along the way he watched dragonflies skimming over the water. He saw turtles floating quietly, and a red-winged blackbird that had his nest in the rushes. He saw a mother deer showing her baby how to drink.

The stream tumbled and splashed as it wound its way among the hills. It jumped over big stones and fell into deep pools.

At the edge of one of these deep pools Ozzie met Bog and Tog, twin frogs, practicing their tones. Tog had a high soprano voice. He could make notes go

up here
 way
 But Bog had a deep bass voice. His notes went
 way down here

Ozzie thought, "What a good time we could have together, practicing our tones every night, and playing leapfrog and follow-the-leader every day. It's no fun to be the only frog in the pond."

So Ozzie told Bog and Tog about the lovely place he had found near the old mill and invited them to share it with him. They decided to go with Ozzie.

The trip upstream was lots of fun. They played leapfrog over the big stones, and had races in the deep pools. They played follow-the-leader through the cattails and around the lily pads.

How happy Ozzie was when they at last came to the old millpond. He was glad to have friends with whom to share it. He was glad he would not have another lonesome night there. He was never again going to try to be the only frog in the pond.

(Copyrighted material used by permission)

Learning God's Way

Karen's and Mary's mother was not feeling well. She asked Karen and Mary to wash and dry the breakfast dishes.

When they had finished the dishes, Mary said, "Let's surprise Mother! I will make the beds and you can empty the wastebaskets!"

"No!" said Karen. "Mother just asked us to do the breakfast dishes. I am going to play with Helen." And she ran out the door.

Mary put the dishes away. Then she made the beds and emptied the wastebaskets.

Which one—Mary or Karen—showed best her love for her mother?

A VERSE FOR YOU

And whosoever shall compel thee to go a mile, go with him twain (two). —Matt: 5:41.

Sounds to Guess

(Prepared by Esther F. Thom)
 Copyrighted material—by permission

By: Enola Chamberlin

Whether they're white or brown or black,
 Ducks will always say "_____"
 Dogs will whine or say "Bow-wow,"
 But your kitten greets you "_____"
 Donkeys bray and mules do too,
 But bossy cows say, only, "_____"
 Horses whinny, songbirds sing,
 But boys and girls say any_____

Answers

Quack, quack; moo; meow

17 JEWEL WATCHES

ONLY \$14.95 POSTPAID. Finest Swiss manufacture. Gold plated. Beautiful radium dial. Shock and water resistant. Lifetime crystal. Expansion bracelet, fits any size wrist. \$75.00 value. Sacrifice. Manufacturer's Christmas overstock. You examine these watches. Wear them at our risk. Satisfaction guaranteed or money refunded. Order by mail. Specify men's or ladies'.

LINCOLN SURPLUS SALES

1704 W. Farwell Ave.,
 Chicago 6, Illinois

Rain

By: Nora Keen Duffy

The thunder is rumbling,
 It's storming today;
 It's raining and raining
 So we cannot play.
 We look through our windows
 At garden and street
 And see how the water
 Falls down in a sheet.
 The raindrops are washing
 The faces of flowers,
 The dainty, white blossoms
 Are taking their showers!
 The thunder is rumbling
 The rain's beating down,
 It's washing the windows
 And showering the town!

SOMETHING TO DO

Read the poem above. Then ask your mother to help you find and read some Bible verses about the rain: Job 5:10; 36:27-28; 37:11; Psalms 147:7-8.

Copyright, 1955, all rights reserved.

000

New Jewish Worker Named

Robert F. Gunter, a student at Southern Baptist Seminary, Louisville, Kentucky, has been elected as a worker in the Jewish Department, Home Mission Board.

Gunter, who accepted his new responsibilities April 1, succeeds Jack Altman, who has resigned to accept a pastorate in Virginia.

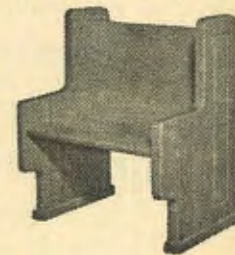
Gunter will work part-time as a student missionary in co-operation with the City Mission program in Louisville.

Church Loans Top Four Million

There are now over four million dollars in outstanding church loans from the Home Mission Board Church Loan Funds, according to G. Frank Garrison, Superintendent of the Church Loan Fund Department.

Garrison also reports that there has been a large number of requests for the use of the new Home Board Bond Plan, which may mean this fund of \$300,000 may soon be exhausted.

CHURCH PEWS



At
 A
 Price

Any Church Can Afford

Write or Call:

WAGONER BROTHERS
 MANUFACTURING CO.

Phone 246
 BOONEVILLE, ARKANSAS

NOTICE

TO

BAPTIST MINISTERS

TIGER DAY

IS

APRIL 29

Help Provide Your High School Seniors
and Sophomores of Junior Colleges
WITH TRANSPORTATION

"Give Them a Chance to Get
the FEEL of College Life
On a Christ-Centered Campus"

The college will pay as much as 3c a mile on car
expense for cars carrying as many as 4 high school
seniors or graduating sophomores of junior colleges
— LUNCH FREE.

REGISTRATION — 8:30 to 10:00 A.M.

Come in a group and present a candidate
for "Tiger Day" Queen

CLASS ROOM VISITATION — FACULTY PRESENTATION
— FREE SKATING — FILM — PLAY — TALENT SHOW

May 2 Is The Date

The stirring theme "WITNESSES . . . IN JERUSALEM" was developed in a fine way by state community missions chairman, Mrs. L. D. Mack, into program material to be used by the organizations of Woman's Missionary Union in observance of the DAY OF PRAYER FOR COMMUNITY MISSIONS, May 2. Its soul-searching appeal will make participants aware of needs, opportunities, obligations in "Our Jerusalem." Attend your observance! Open your heart! Be a "Witness . . . In Jerusalem."

TELL about Girls' Auxiliary

May 8-14 is Girls' Auxiliary Focus Week when special attention will be given the fine missionary organization for girls and when members will magnify the ideals of the organization.

TELL is the mission magazine used by the Auxiliary and gave inspiration for emphases for the week.

Sunday — TELL about the organization. (Enlist new members.)

Monday — TELL, the mission magazine contains fine material for your program.

Tuesday — TELL unsaved friends about your Saviour. (Community missions.)

Wednesday — TELL about stewardship by presenting playlet, *Ann's Allowance*, at mid-week prayer service.

Thursday — TELL another group how to organize a new G.A. (Extension.)

Friday — TELL your mothers how much you appreciate them by honoring them with a banquet.

Saturday — TELL your family of your appreciation for home. Make this "stay-at-home-day."

This is an IMPORTANT WEEK! TELL!

MIAMI BOUND?

Southern Woman's Missionary Union will be held in Miami, Florida, May 15-17. (See program outline in April 14th issue of the *Arkansas Baptist*.) Arkansas may have a delegation of 49 (no limit on visitors). Names, addresses, name of churches of all who plan to attend should be sent to the State WMU Office, 310 Baptist Building, Little Rock, immediately to be included in the delegation list in which there are still

vacancies. Arkansas should have a full quota in attendance. Send names today.

FOR THE BOYS!

Outstanding leaders of boys will join the missionary speakers schedule on the program for the Royal Ambassador Congress to be held at the Second Baptist Church, Little Rock, May 7-8. Jimmie Green of Levy is the state Ambassador-in-Chief and will preside over the Congress. Speakers will include Rev. Ernest Lee Holloway, missionary to Japan; Mr. Ivyloy Bishop, former south-wide RA leader and now RA worker in Fort Worth, Texas; Mr. Joel Ray, RA Secretary of Mississippi, and several national students enrolled at Clark College and Southern Baptist College. SEE THAT YOUR BOYS ATTEND!

MANUAL OUT OF PRINT

Due to many changes necessitated by provisions in the WMU constitution and other current plans, the *Manual of Woman's Missionary Union* must be revised. With exhaustion of the present stock, it will not be available for some months. Save your copies for research and supplementary help. It is basically correct in most instances and contains much fine information. In the meantime, use the *Year Book* and *Guide Book* for the study of methods and *Following in His Train* for historical background.

SO IMPORTANT!

The following is a brief summary of some of the work done recently by Mr. D. J. Blaylock, Narcotics Education consultant, and made possible by gifts to the Narcotics Education Fund. We must continue to instruct our youth concerning the effects of the use of narcotics of all kinds and this is a splendid way to do it. Each WMU organization is urged to give at least one-third of the District Budget apportionment for this worthy cause. Have you had a share? Contributions should be sent to state WMU treasurer, 310 Baptist Building, Little Rock.

1. Classes in science, health, Narcotics Education in 6 high schools.
2. Individual and group conferences with students and faculty.
3. Classes and conferences in 9 other public schools.
4. Speaking to church, school and civic groups.
5. Teaching an accredited course in two state colleges.

In the last six months Mr. Blaylock has contacted around 8,000 boys and girls of the state giving them scientific facts concerning narcotics and their effects on the human body.

Needed? YES! Let's support the program with our gifts!

Woman's Missionary Union
Nancy Cooper, Secretary

"A FILM FOR EVERYONE . . ."

a dual message on salvation and dedication to Christian service."

—Christian Life.

The true-to-life story of a cynical medical student and a Christian nurse . . . and the re-creation by Warner Sallman of his original drawing of Jesus.



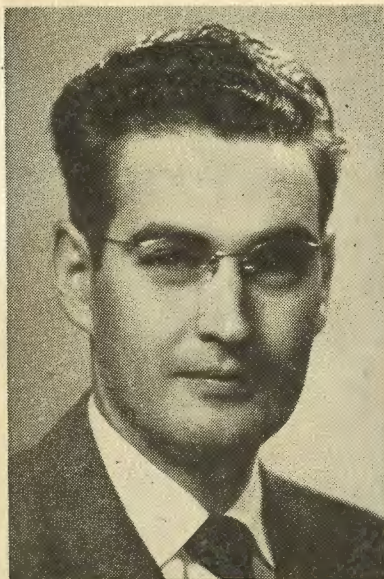
"SON OF MAN"

16mm full-color, sound film
Running time—29 minutes

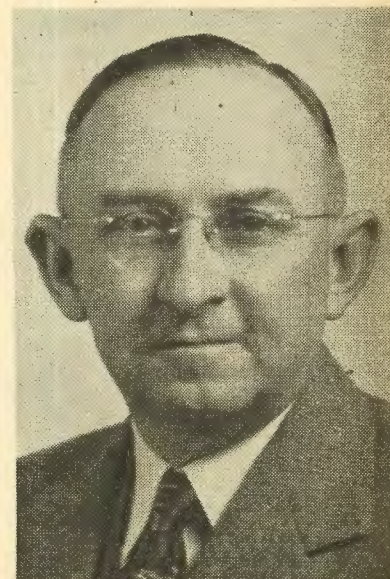
Available at your Film
Library, or write Film Dept.
NORTH PARK COLLEGE
3225 Foster Ave., Chicago 25



"THAT THE WORLD MAY KNOW"



Earl Waldrup, Secretary
Audio-Visual Aids Dept.
Baptist S. S. Board



R. L. Middleton, Director
Business Division
Baptist S. S. Board

State Church Library Clinic and Audio-Visual Aids Workshop

MAY 5-6

First Baptist Church, Little Rock

CHURCH LIBRARY CLINIC

THURSDAY

- 9:30—Registration
- 9:45—Welcome — Dr. Nolan Howington
- 9:55—Introduction and Announcements — Mr. Dan Coker
- 10:00—Worship Period — Mr. R. L. Middleton
- 10:20—THAT THE WORLD MAY KNOW THROUGH THE BOOK MINISTRY — Mrs. Mamie Shook
- 10:30—BEGINNING A CHURCH LIBRARY — Mrs. Eugene Bee
- 11:15—SUMMER READING CLUBS — Mrs. Hugh Jones
- 11:25—BOOKS ADULTS SHOULD KNOW — Mrs. Lorell Burns
- 12:05—Special Music — Mr. George Stark
- 12:10—I KNOW WHOM I HAVE BELIEVED — W. Harry Hunt
- 12:30—Lunch
- 1:30—Song — Prayer
- 1:35—THAT THE WORLD MAY KNOW THROUGH PUBLICITY — Mrs. Clara Simmons — Mrs. Carl Hinson
- 2:00—PROPERLY CLASSIFYING AND PROCESSING BOOKS — Mrs. Eugene Bee
- 3:00—KNOW AND GROW THROUGH ASSOCIATIONAL LIBRARY COUNCILS — Mrs. Dan Coker
- 3:10—YOUTH WILL KNOW THROUGH GOOD READING — Mrs. Lorell Burns
- 4:00—Autograph Party for Mr. R. L. Middleton



Mrs. Lorell Burns
Regional Supervisor
Baptist Book Stores

- 1:40—Conference: ADMINISTRATION AND UTILIZATION — Mr. Earl Waldrup
- 2:25—Intermission
- 2:35—Workshop: NOW LET'S DO IT — Mr. Joe Cunningham
- 3:30—Discussion Period — Mr. Earl Waldrup, Leader
- 4:00—Autograph Party for Mr. R. L. Middleton
- 6:30—CHURCH LIBRARY - AUDIO-VISUAL AIDS BANQUET

FRIDAY

- 9:00—Worship Period — Mr. R. L. Middleton
- 9:30—Conference: PUBLIC ADDRESS SYSTEMS AND THEIR USE — Mr. J. W. Johnston
- 10:20—Intermission
- 10:30—Panel: QUESTION BOX — Mr. Bob Bradsby, Leader
- 11:10—Discussion Period: REVIEW AND PREVIEW — Mr. Earl Waldrup
- 12:15—Adjourn

Banquet

FIRST BAPTIST CHURCH, 6:30
Dr. Nolan Howington, Toastmaster

- Invocation
- Special Music — George Stark, First Church, Little Rock
- "Arise. Let Us Go Hence" — Mrs. Lorell Burns
- Special Music — Robert Glenn, Tabernacle Church, Little Rock
- "That The World May Know" — Mr. R. L. Middleton
- Sneak Preview — Mr. Earl Waldrup

FRIDAY

- 9:00—Worship Period — Mr. R. L. Middleton
- 9:30—VISUAL AIDS IN THE LIBRARY — Mr. Dan Coker
- 9:40—PASTOR AND THE LIBRARY — J. H. Street
- 10:00—CATALOGING AND SUBJECT READING — Mrs. Eugene Lee
- 11:00—CHILDREN GROWING WITH BOOKS — Mrs. Lorell Burns
- 11:45—GOD SO LOVED THE WORLD — Wilbur Herring
- 12:00—Adjourn

AUDIO-VISUAL AIDS WORKSHOP

THURSDAY

- 9:30—Registration
- 9:45—Dr. Nolan Howington — Welcome
- 9:55—Introduction and Announcements — Mr. Dan Coker
- 10:00—Worship Period — Mr. R. L. Middleton
- 10:20—Conference: VISUAL AIDS IN THE CHURCH PROGRAM — Mr. James C. Coates
- 11:05—Intermission
- 11:10—Conference: VISUAL AIDS IN THE ELEMENTARY DEPARTMENT — Miss Ruth Bridges
- 12:00—Lunch
- 1:00—Panel: WHAT'S YOUR PROBLEM? — Mr. Joe Cunningham, Leader



Mrs. Eugene Bee
Library Supervisor
Birmingham, Ala.

Jehoshaphat's Righteous Leadership

By BURTON A. MILEY

These words from the previous lesson speak lasting truth. "The Lord is with you, while ye be with him; . . . but if ye forsake him, he will forsake you" (15:2). They were spoken to a king of Judah who served and died. Jehoshaphat, the son of Asa, to whom the quoted words were spoken, succeeded his father as king. Probably Jehoshaphat who was 35 years of age when he ascended the throne, had opportunity through his growing years to analyze the work of his father. He observed the goodness of God and shaped his life and will toward God. Any man's official life is determined by his personal qualities. One will lead a nation toward God only if he himself seeks God. Character has no substitute. Strong, godly character increases the stature of the possessor and thwarts the evil which would hammer down life and service.

TESTED PREVAILING CUSTOMS

One must test prevailing customs to know what works for and against him. Habits and customs are constant servants to life or adversaries to the ideal which has been chosen. Jehoshaphat's inventory revealed the worship of Baal in his land. He knew that this custom was against his purpose to lead people into righteousness. The record in verse six is: "Moreover he took away the places and groves out of Judah" (17:6). His heart was encouraged in the ways of the Lord. Encouragement usually comes from some useful activity.

Two activities of this leader are noted. He fortified the border cities of his kingdom and placed garrisons in other towns nearby. A strong military organization was activated; 1,160,000 soldiers were grouped under five captains in his capital, Jerusalem. His force was impressive to the point that "The fear of the Lord fell upon all the kingdoms of the lands that were around about Judah, so that they made no war against Jehoshaphat" (17:10). His strength and popularity are further shown by tribute from the Philistines and Arabians. The small kingdom possibly stood in need of this extra revenue to maintain the national budget.

But the leader was not satisfied with his outward security. He foresaw the need for moral reform which would result in spiritual welfare. Baal worship was as insidious and persistent as the liquor traffic of today. Many who engaged in Baal worship did not openly depart from God. The pagan worship divided attention and soon the worship of Jehovah was ineffective. When God is mixed with other objects

Sunday School Lesson

May 1, 1955

2 Chronicles 17:1-7, 9; 19:4-7

of worship, He decreases and the others increase. One can see where the custom of Baal worship would ultimately end. "The high places and groves" are references to the site of pagan worship. Ancient religions erected altars only to their gods. It was thought wrong to shut up the gods within walls. A grove of trees was a natural site for such an altar and attendant rites. The people were weaned from Jerusalem and the temple by these "community" centers until they were torn down by Jehoshaphat.

CHANGE SLOWLY

People move slowly in any change for the better. Prevailing customs are not easy to unseat. Education is a sure method to combat customs of undesirable value. Jehoshaphat grasped the potential and created an educational commission to go out among the people on extensive basis. Five princes, nine Levites and two priests composed a group who were to make a circuit of the towns in Judah. This is the first practical measure recorded by any of the kings to religiously instruct the people. The time was right for this program of home education. The kingdom was at peace internally and had freedom from any foreign wars during the quarter of century of Jehoshaphat's reign.

Note what was taught the people. "They taught . . . the book of the law of the Lord." (vs. 9) This was either the entire Pentateuch (first five books of the Bible) or the Book of Deuteronomy which is noted as a summary of the law. People were brought face to face with God's demands. Godly people apart from instruction in God's way and law do not exist. Enduring foundation for any nation is God's law. Happy and effective is the civil leader who can read and understand the signs of the time and who dares to build on God's word.

People who are taught feel responsible. A democracy like the one under which we live is premised upon the the good judgment of the individual. Destroy that judgment by moral decadence, ignorance, or complex policies and the democracy immediately lends itself to bureaucrats and demagogues.

REFORMING TOUR

Jehoshaphat went from the northern to southern extremities of the land and turned the people

back to God. What a testimony to a leader! Uncorrupted justice in civil relations help to maintain spiritual integrity. Jehoshaphat established local courts in each of the fortified cities. Judges were appointed and instructed to dispense justice in God's name. Partiality, bribery and favoritism were to be thrown aside in favor of just dealing.

PRACTICAL LESSONS

It is sad to have to go back to a man's youth to find his virtues. Jehoshaphat walked in the way of his ancestor, David. However, it was not the part of David's life that was connected with Bathsheba in which he walked, but it was the fine, virtuous days of David before decadence had come. The end of life is that which is most remembered. If the end is pure the testimony is given for good. Virtue should not be relegated to either one or the other of the extremities of life but should become the fixed habit of all life. Are your days of virtue "the other days" of your life?

Bible teaching can be judged by its fruits. Five princes, nine

CHURCH PEWS

All clear virgin Mountain pine and oak, as low as \$3.95 per lineal ft. Banquet tables and chairs at wholesale. Contact

Lynch Supply Co., Ft. Smith, Ark.

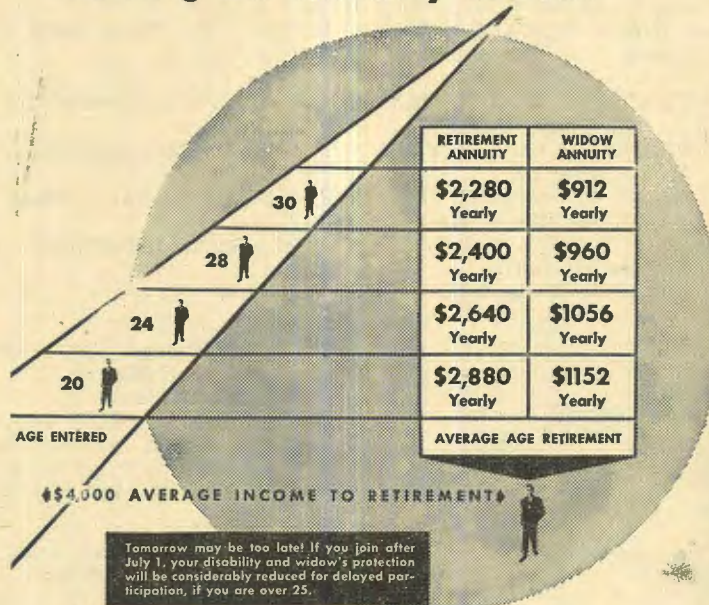
Levites, and two priests went out to teach in the cities of Judah. The people responded and a righteous king enjoyed the backing of a loyal, encouraged, instructed people. A leader can do so little if his following has not been motivated to the same principles as he. Leaders are reduced to the level of the people who support them, if they do not lift the people to the level of their leadership.

ATLAS FOLDING CHAIRS



Greater
Comfort—Strength—Safety
WHOLESALE PRICES
TO CHURCHES
All-State Supply, Inc.
Ph. FR 4-1687
1401 W. Capitol
Little Rock, Ark.

Ceiling On Annuity Lifted!



NOW, A GREATER PROTECTION THAN EVER BEFORE...

Now, the Southern Baptist Protection Plan offers you an indispensable base on which to build your insurance. Here are the answers to your most urgent needs . . . and you pay only one-third of the cost.

Normal Retirement Annuity at 65 . . . Equal to 1 1/2% of your salary for each year of participation in the Plan.

Disability Annuity . . . Up to \$900 per year.

Widow's Annuity . . . Up to 40% of your normal retirement annuity whether death occurs before or after retirement.

Lump Sum Death Benefit . . . Equal to twice

your normal retirement annuity if you do not leave a widow.

Early Retirement . . . Reduced retirement annuity available if you retire between the ages of 60 and 65.

Reduced Payments . . . Further, if you feel the need for reducing your payments in the future, you may pay on a reduced salary basis, which you specify, and retain your protection on that basis.

The church and state convention share this plan with you, each paying 5% of your salary (up to \$4,000 per year). Don't delay. Join early and build up a larger annuity.

For a pamphlet on the Protection Plan and application blanks, write to the Relief and Annuity Board.

Relief and Annuity Board
OF THE SOUTHERN BAPTIST CONVENTION
BAPTIST BUNGALOW, DALLAS 1, TEXAS

Jehoshaphat's Righteous Leadership

By BURTON A. MILEY

Sunday School Lesson

May 1, 1955

2 Chronicles 17:1-7, 9; 19:4-7

These words from the previous lesson speak lasting truth. "The Lord is with you, while ye be with him; . . . but if ye forsake him, he will forsake you" (15:2). They were spoken to a king of Judah who served and died. Jehoshaphat, the son of Asa, to whom the quoted words were spoken, succeeded his father as king. Probably Jehoshaphat who was 35 years of age when he ascended the throne, had opportunity through his growing years to analyze the work of his father. He observed the goodness of God and shaped his life and will toward God. Any man's official life is determined by his personal qualities. One will lead a nation toward God only if he himself seeks God. Character has no substitute. Strong, godly character increases the stature of the possessor and thwarts the evil which would hammer down life and service.

TESTED PREVAILING CUSTOMS

One must test prevailing customs to know what works for and against him. Habits and customs are constant servants to life or adversaries to the ideal which has been chosen. Jehoshaphat's inventory revealed the worship of Baal in his land. He knew that this custom was against his purpose to lead people into righteousness. The record in verse six is: "Moreover he took away the places and groves out of Judah" (17:6). His heart was encouraged in the ways of the Lord. Encouragement usually comes from some useful activity.

Two activities of this leader are noted. He fortified the border cities of his kingdom and placed garrisons in other towns nearby. A strong military organization was activated; 1,160,000 soldiers were grouped under five captains in his capital, Jerusalem. His force was impressive to the point that "The fear of the Lord fell upon all the kingdoms of the lands that were around about Judah, so that they made no war against Jehoshaphat" (17:10). His strength and popularity are further shown by tribute from the Philistines and Arabians. The small kingdom possibly stood in need of this extra revenue to maintain the national budget.

But the leader was not satisfied with his outward security. He foresaw the need for moral reform which would result in spiritual welfare. Baal worship was as insidious and persistent as the liquor traffic of today. Many who engaged in Baal worship did not openly depart from God. The pagan worship divided attention and soon the worship of Jehovah was ineffective. When God is mixed with other objects

of worship, He decreases and the others increase. One can see where the custom of Baal worship would ultimately end. "The high places and groves" are references to the site of pagan worship. Ancient religions erected altars only to their gods. It was thought wrong to shut up the gods within walls. A grove of trees was a natural site for such an altar and attendant rites. The people were weaned from Jerusalem and the temple by these "community" centers until they were torn down by Jehoshaphat.

CHANGE SLOWLY

People move slowly in any change for the better. Prevailing customs are not easy to unseat. Education is a sure method to combat customs of undesirable value. Jehoshaphat grasped the potential and created an educational commission to go out among the people on extensive basis. Five princes, nine Levites and two priests composed a group who were to make a circuit of the towns in Judah. This is the first practical measure recorded by any of the kings to religiously instruct the people. The time was right for this program of home education. The kingdom was at peace internally and had freedom from any foreign wars during the quarter of century of Jehoshaphat's reign.

Note what was taught the people. "They taught . . . the book of the law of the Lord." (vs. 9) This was either the entire Pentateuch (first five books of the Bible) or the Book of Deuteronomy which is noted as a summary of the law. People were brought face to face with God's demands. Godly people apart from instruction in God's way and law do not exist. Enduring foundation for any nation is God's law. Happy and effective is the civil leader who can read and understand the signs of the time and who dares to build on God's word.

People who are taught feel responsible. A democracy like the one under which we live is premised upon the good judgment of the individual. Destroy that judgment by moral decadence, ignorance, or complex policies and the democracy immediately lends itself to bureaucrats and demagogues.

REFORMING TOUR

Jehoshaphat went from the northern to southern extremities of the land and turned the people

back to God. What a testimony to a leader! Uncorrupted justice in civil relations help to maintain spiritual integrity. Jehoshaphat established local courts in each of the fortified cities. Judges were appointed and instructed to dispense justice in God's name. Partiality, bribery and favoritism were to be thrown aside in favor of just dealing.

PRACTICAL LESSONS

It is sad to have to go back to a man's youth to find his virtues. Jehoshaphat walked in the way of his ancestor, David. However, it was not the part of David's life that was connected with Bathsheba in which he walked, but it was the fine, virtuous days of David before decadence had come. The end of life is that which is most remembered. If the end is pure the testimony is given for good. Virtue should not be relegated to either one or the other of the extremities of life but should become the fixed habit of all life. Are your days of virtue "the other days" of your life?

Bible teaching can be judged by its fruits. Five princes, nine

CHURCH PEWS

All clear virgin Mountain pine and oak, as low as \$3.95 per lineal ft. Banquet tables and chairs at wholesale. Contact

Lynch Supply Co., Ft. Smith, Ark.

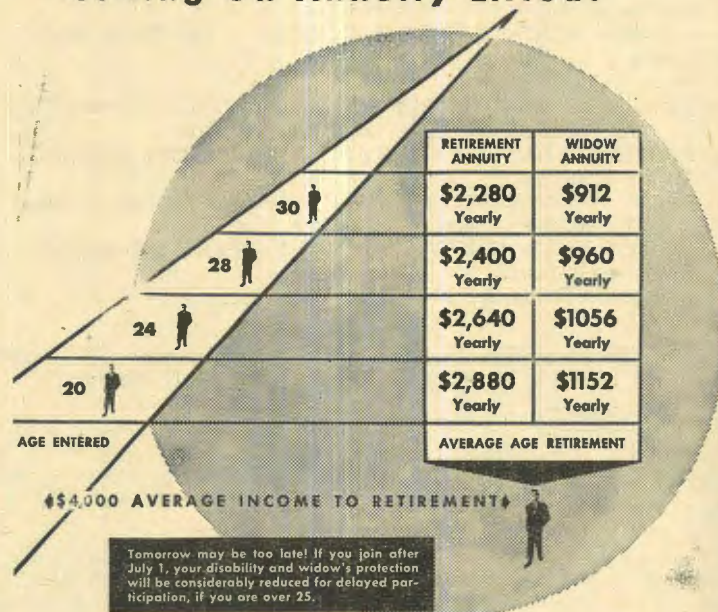
Levites, and two priests went out to teach in the cities of Judah. The people responded and a righteous king enjoyed the backing of a loyal, encouraged, instructed people. A leader can do so little if his following has not been motivated to the same principles as he. Leaders are reduced to the level of the people who support them, if they do not lift the people to the level of their leadership.

ATLAS FOLDING CHAIRS



Greater
Comfort—Strength—Safety
WHOLESALE PRICES
TO CHURCHES
All-State Supply, Inc.
Ph. FR 4-1687
1401 W. Capitol
Little Rock, Ark.

Ceiling On Annuity Lifted!



NOW, A GREATER PROTECTION THAN EVER BEFORE...

Now, the Southern Baptist Protection Plan offers you an indispensable base on which to build your insurance. Here are the answers to your most urgent needs . . . and you pay only one-third of the cost.

Normal Retirement Annuity at 65 . . . Equal to 1 1/2% of your salary for each year of participation in the Plan.

Disability Annuity . . . Up to \$900 per year.

Widow's Annuity . . . Up to 40% of your normal annual retirement annuity whether death occurs before or after retirement.

Lump Sum Death Benefit . . . Equal to twice

your normal retirement annuity if you do not leave a widow.

Early Retirement . . . Reduced retirement annuity available if you retire between the ages of 60 and 65.

Reduced Payments . . . Further, if you feel the need for reducing your payments in the future, you may pay on a reduced salary basis, which you specify, and retain your protection on that basis.

The church and state convention share this plan with you, each paying 5% of your salary (up to \$4,000 per year). Don't delay. Join early and build up a larger annuity.

For a pamphlet on the Protection Plan and application blanks, write to the Relief and Annuity Board.

Relief and Annuity Board
OF THE SOUTHERN BAPTIST CONVENTION
DUSTY BIRMINGHAM, DALLAS 1, TEXAS

QUARTERLY REPORT

Total Cash Contributions Received in Office of General Secretary of Executive Board,
Arkansas Baptist State Convention, First Quarter, 1955

(This statement does not include receipts for Ministers Retirement Fund)

Notify B. L. Bridges, 401 W. Capitol, Little Rock, of any errors in this report.

Churches and Pastors	Cooperative Program	Designated	Churches and Pastors	Cooperative Program	Designated	Churches and Pastors	Cooperative Program	Designated
ARKANSAS VALLEY ASSOCIATION								
Barton—James B. Kemper	\$ 20.00	\$ —	Jerry Hopkins	245.16	—	New Home—W. J. Nance	—	—
Beck Memorial	—	—	Sugar Creek	—	—	New Providence	—	—
Brickeys—B. F. McDonald	40.00	—	Sulphur Springs—Lloyd Jeffers	15.00	—	Parks—G. P. Gholson	12.42	—
Brinkley—H. L. Lipford	1,001.64	—	Twelve Corners—John Lawson	33.80	—	Pilot View—Elton Pennington	—	—
Clarendon—L. Y. Lewis	316.46	—	TOTALS	\$ 7,516.00	\$ 108.40	Piney	—	—
Corder's Chapel	12.50	—	BIG CREEK ASSOCIATION					
Elaine—Nelson Greenleaf	1,319.87	—	County Line	3.00	\$ —	Pleasant Grove No. 2— John E. Evans	—	—
Friendship—J. D. Kempner	15.00	—	Elizabeth	14.50	—	Pleasant Grove No. 3	—	—
Helena, First—Rel Gray	3,333.00	—	Enterprise	—	—	Poteau—Jim L. Nobles	38.84	—
Hughes—W. D. Wallace	450.00	15.00	Flora	3.00	—	Rock Creek—J. W. Cartmill	4.27	—
Lexa—J. D. Rains	125.00	—	Gum Springs	10.58	—	Salem	—	14.00
Marianna—D. Hoyle Haire	2,865.32	78.67	Hardy	9.60	—	Shiloh—Earl Hough	—	—
Marvell—H. W. Ryan	88.19	—	Mammoth Springs—W. A. Moody	—	—	Union Hope	—	—
Monroe	12.75	—	Mt. Calm	—	—	Unity	—	—
Moro—J. D. Baker	100.00	—	Mt. Zion—J. F. Richardson	6.00	—	Waldron, First—W. V. Philliber	\$ 2,225.28	—
Northside, Helena—James N. Lewis	10.00	—	Saddle—W. A. Moody	5.00	—	West Hartford—Haskell Reed	60.00	—
Old Town—Steve Sturdivant	80.85	—	Salem—Wayne D. Gunther	60.00	—	TOTALS	\$ 3,593.39	\$ 38.02
Onida	—	—	Spring River—Ben Meeks	—	—	BUCKVILLE ASSOCIATION		
Petty's Chapel—W. A. Ginn	—	—	Viola—H. Graham Roberts	30.00	—	Cedar Glades—Laborn Sharp	\$ 3.01	\$ —
Rehobeth—W. A. Ginn	—	12.00	TOTALS	\$ 141.68	\$ —	Concord—Henry Frazier	13.00	—
Snow Lake—Eugene Surman	—	—	BLACK RIVER ASSOCIATION					
Turner—B. F. McDonald	191.59	3.36	Alicia—Charles Gray	\$ 2.00	\$ —	Little Country Church— Roy Murders	45.00	—
Twin Bridges	—	—	Banks	—	—	Mt. Tabor—Kenneth Gilbert	8.00	—
West Helena—Wilson C. Deese	2,050.00	—	Black Rock	—	—	Mt. Valley—Joe Anderson	8.00	—
West Helena, Second— Billy Mabry	45.00	—	Clear Springs—George McGehey	37.50	—	Prairie Grove—B. H. Bashaw	—	—
TOTALS	\$ 12,077.17	\$ 109.03	Clover Bend—Lehman Smelser	—	—	Rock Springs—B. H. Bashaw	4.57	—
ASHLEY COUNTY ASSOCIATION								
Corinth "A"	\$ 36.26	\$ —	College City—John E. Steeley	92.32	6.50	Sweet Home—B. H. Bashaw	—	—
Crossett—R. L. Smith	1,875.00	—	Diaz—James Marlar	24.00	—	TOTALS	\$ 81.58	\$ —
Crossett, Second—Clyde Jones	5.00	—	Grubbs—James O. Melton	10.00	—	CADDO RIVER ASSOCIATION		
Eben—Billy Carter	—	—	Horseshoe	43.21	12.00	Amity—Herbert Sparler	\$ —	\$ —
Fellowship	—	—	Hoxie—J. V. Chandler	105.00	—	Black Springs—C. H. Moore	12.00	—
Fountain Hill—Clarence Allison	150.00	—	Imboden—Earl Shelby	42.75	21.81	Caddo Gap	10.00	—
Hamburg, First—E. E. Griever	1,500.00	—	Immanuel, Newport—J. R. Stogsdille, Jr.	75.00	—	Glenwood—L. B. Gustavus	93.68	5.38
Jarvis Chapel—S. E. Powell	18.00	—	Jacksonport	—	—	Liberty—Doyle Echois	—	—
Magnolia—Cecil Avery	92.00	45.00	Murphy's Corner—Roger Crimer	—	—	Little Hope—Arthur Breshears	5.00	—
Martinville—C. R. Johnson	—	—	New Hope No. 1	25.23	—	Mount Gilead—C. H. Moore	8.00	—
Meridian	—	—	New Hope No. 2	10.00	10.00	Mountain Home	1.00	—
Mt. Olive No. 1—J. A. Hogan	20.00	—	Newport, First—Charles F. Wilkins	450.00	—	Mount Ida—John Collier	63.78	—
Mt. Olive No. 2—Henry Kaehy	248.05	—	Old Walnut Ridge—R. O. Pittman	19.97	—	Norman—John E. Byrd	128.98	—
Mt. Pleasant—J. M. Langston	15.00	—	Ozark—John Hamilton	2.00	—	Oak Grove—Bill Standiford	3.30	—
Mt. Zion—H. I. McLeod	10.00	—	Pitts—W. A. Mink	—	—	Oden—Harrison Pike	132.16	3.00
North Crossett—Joseph Hogan	201.51	6.90	Pleasant Grove	—	—	Pine Ridge—M. L. Wallace	—	—
Sardis—Wayne Givens	—	—	Pleasant Valley	—	—	Pleasant Grove—C. H. Stevens	15.00	—
Shiloh—Earl Montgolf	15.00	—	Ravenden—George McGehey	12.71	—	Pleasant Valley	3.35	—
Temple—J. W. Buckner	355.74	—	Sedgwick—Howard Williams	25.20	—	Refuge—Arthur Middleton	12.00	—
Unity—Billy Ralph Moore	—	—	Smithville	7.50	—	Sulphur Springs—Sam Sherman	29.92	60.26
TOTALS	\$ 4,541.56	\$ 51.90	Swifton—P. O. Pittman	150.00	—	TOTALS	\$ 518.17	\$ 68.64
BARTHOLOMEW ASSOCIATION								
Antloch	\$ 30.00	\$ —	Tuckerman—Byron King	260.00	—	CAREY ASSOCIATION		
Beulah	—	—	Westmoreland	—	—	Bearden—Gus Poole	196.96	—
Cominto	—	—	White Oak—A. O. Collier	—	—	Calvary—Garland Anderson	115.82	—
Corinth "B"—Vesta White	5.00	—	TOTALS	\$ 1,394.39	\$ 50.31	Dalark—Hugh Howard	15.00	—
Eagle Lake	11.85	—	BOONE COUNTY ASSOCIATION					
Ebenezer—G. W. Hootne	42.00	—	Alpena—Charles A. McNabb	\$ 75.00	\$ —	Fordyce—Lawson Hatfield	3,000.00	—
Enon—James Hayes	116.46	—	Batavia—S. W. Wilkerson	30.00	—	Hampton—D. W. Stark	367.30	—
Florence—R. C. Creed	12.00	—	Bear Creek Springs—Perry Fitchue	24.00	—	Harmony—Thomas C. Urry	4.58	—
Holly Springs—Rolla Nixon	40.00	—	Bellefonte—Gene Smith	30.00	—	Holly Springs	—	—
Immanuel, Warren—Quincy Mathis	450.00	—	Burlington—Perry Fitchue	64.04	—	Manning—John Eason	—	—
Ladell—S. E. Powell	10.00	—	Eagle Heights—Hugh Cooper	140.00	—	New Hope—Willis M. Crosby	23.37	—
Macedonia—R. C. Creed	30.00	—	Elmwood—Troy Eoff	—	—	Ouachita—C. M. Miller	16.00	—
Marsden—D. A. Brian	5.00	—	Everton—Roy Dunn	15.00	—	Prosperity—Walter Parks	40.76	—
Monticello, First—Thomas J. Welch	750.00	25.00	Gaither	15.00	—	Shady Grove—Jim Walsh	15.00	—
Monticello, Second—Edward Harris	120.00	—	Grubb Springs	—	—	Sparkman—Maxwell Baker	639.96	—
New Liberty—Rolla Nixon	—	—	Harrison, First—Lehman F. Webb	1,275.00	—	South Side Mission—Dale Jackson	—	—
Northside—J. P. Burgess	60.00	—	Hopewell—Arlie McGill	18.00	—	Thornton—M. H. McManus	175.06	—
Old Union—R. C. Creed	—	—	Lead Hill, First—Elmo Fry	5.00	—	Tinsman—Bob Norvell	77.33	10.50
Pattsville	9.00	—	Mt. Zion (Hill Top)— Kenneth Edmonson	—	—	Tulip—Sid Goza	8.72	—
Pleasant Grove—J. W. Carney	8.00	—	New Hope—Elmer Cox	58.50	—	TOTALS	\$ 4,695.86	\$ 10.50
Prairie Grove—Frank Higginbotham	—	—	Northvale—Theo G. Monroe	40.00	—	CAROLINE ASSOCIATION		
Saline—D. A. Brian	—	—	Omaha—Quenten Middleton	41.85	—	Austin Station—O. L. Justice	12.00	—
Selma—Fred Wesner	15.17	—	Oregon Flat—Truman Logan	20.00	—	Baugh Chapel—Frank Pickard	9.00	—
Union Hill	—	—	Prairie View—Kenneth Edmonson	6.00	—	Biscoe—Tom W. Dove	—	—
Warren, First—Gerald W. Trussell	1,950.00	—	South Side	10.00	—	Brasfield	15.00	—
Wilmar—Ed Ratliff	70.26	—	Union—Jesse Matlock	22.50	—	Brownsville—Horace Duke	2.50	—
TOTALS	\$ 3,734.74	\$ 25.00	Valley Springs	9.20	—	Cabot—Samuel Phillips	660.00	—
BENTON ASSOCIATION								
Bentonville—James L. Pleitz	\$ 1,382.35	\$ 18.60	TOTALS	\$ 1,899.09	\$ —	Camp Ground—Richard Burgess	—	—
Bentonville, Central Ave.— Robert L. Fox	45.86	—	BUCKNER ASSOCIATION					
Centeron—Melvin Coffelt	337.05	—	Abbott—E. C. Egbert	\$ 20.72	\$ —	Caney Creek—W. E. Davis	90.00	—
Decatur—Sardis Bever	468.69	—	Bates	3.00	—	Carlisle—L. G. Gatlin	1,232.60	—
Garfield—James Conner	16.39	—	Blansett—Dewey Fox	27.82	—	Chambers—W. Dave Kilpatrick	—	—
Gentry—Kenneth Kern	717.95	15.95	Calvary—E. G. Egbert	3.05	—	Coy—Elmer Berry	120.00	—
Gravette—Carl Chism	179.63	—	Cauthron—Alvin Willsey	—	—	Des Arc—C. R. Cooper	173.36	—
Gum Springs—Bruce Holland	54.00	—	Cedar Creek—W. J. Nance	—	—	DeValls Bluff—Art King	118.55	—
Harmony—M. L. Smith	15.00	—	Clark's Chapel—Warren Leonard	—	—	England—Carl H. Johnson	275.00	—
Highfill	165.42	—	Dayton—L. L. Gilliam	21.31	—	Hazen—E. O. Martindale	300.00	—
Lakeview—J. L. Bass	226.28	23.50	Denton—Harmon Allen	75.00	—	Lonoke—John Holston	1,680.00	—
Lowell—Orville Haley	129.35	—	Fellowship—Warner W. Kersh	86.92	—	Mt. Carmel	6.00	10.04
Mason Valley—Ellis Green	28.11	8.92	Friendship—Walter Magouyrk	15.00	—	New Hope	21.00	—
Monte Ne—W. E. Bland	82.00	—	Hartford, First—Harold Plunkett	131.28	—	Oak Grove—Luther Bynum	25.00	—
Pea Ridge—Clifford Palmer	75.00	—	Haw Creek—James Copeland	31.51	—	Old Austin	38.05	—
Pleasant Hill—Arnold Combs	13.07	—	Hon—Jess Cartwright	—	—	Pleasant Hill	30.00	—
Rogers, First—E. M. Skinner	777.69	—	Huntington—Charles Whedbee	57.95	—	Pleasant Valley—Charles Holcomb	—	—
Rogers, Immanuel—Ellis Tiffany	363.96	7.73	Ione—John E. Evans	22.80	—	Steel Bridge	66.50	—
Rogers, Sunnyside—Ray Galysan	218.49	33.70	James Fork—Lawrence Coughman	100.00	—	Toltec	—	—
Siloam Springs, 1st—Oster R. Daniels	1,925.82	—	Long Ridge—Walter Mogouyrk	—	—	Ward—Harold Sadler	52.00	—
Siloam Springs, Harvard Ave.—	—	—	Lucas	—	—	Wattensaw—Horace Boyd	28.00	—
			Mansfield, First—James Walker	596.61	24.02	Williams Chapel—Wilbur Spence	6.00	—
			Midland—Loren Aimes	59.61	—	TOTALS	\$ 4,960.56	\$ 10.04
			Mt. Gilead—John Staggs	—	—	CARROLL ASSOCIATION		
						Berryville—J. B. Measel	\$ 457.18	\$ 49.74
						Blue Eye—Ed D. Dawson	10.00	—
						Denver	—	—
						Eureka Springs, 1st—Daniel Hughes	51.09	—
						Grandview—Homer Allred	82.16	—

(Continued on Page Fourteen)

QUARTERLY REPORT

Churches and Pastors	Cooperative Program	Designated
(Continued from Page Thirteen)		
Green Forest—J. E. Presley	120.00	—
Rock Springs—Fred Oliver	30.00	—
TOTALS	\$ 750.43	\$ 49.74
CENTENNIAL ASSOCIATION		
Almyra—D. E. Newberry	\$ 1,952.56	\$ 25.46
DeWitt, First—Norman Lerch	750.00	366.67
Eastside—Dickson Rial	—	—
Gillett—Fred Dake	70.48	—
Hagler—Don Bowman	28.33	—
Humphrey—W. L. Bunch	78.00	—
Reydell—Don Eppinette	20.00	—
St. Charles—Rex Shreve	18.00	—
Stuttgart—Gerald Smith	2,037.80	42.00
Tichnor—L. E. Ross	45.00	—
Miscellaneous	19.74	—
TOTALS	\$ 5,019.91	\$ 434.13
CENTRAL ASSOCIATION		
Antloch—Lynwood Henderson	\$ 120.00	—
Bauxite—Dillard S. Miller	1,730.93	—
Benton—B. K. Selph	2,887.50	375.00
Bule—Paul Ragland	41.25	—
Calvary—J. W. Royal	365.24	—
Central, Hot Springs—Milford L. Baker	2,200.00	—
Emmanuel, Hot Springs—Ed Griffin	111.43	—
Friendship—W. O. Tamlin	106.29	—
Gilead—John Babcock	12.00	—
Grand Avenue—Don Chesser	93.42	—
Gravel Hill—Dennison Yates	15.00	—
Gum Springs—Ralph Izard	23.84	—
Harvey's Chapel—Walter Watts	60.09	—
Hot Springs, First—John L. Dodge	1,275.00	26.25
Hot Springs, Second—O. L. Bayless	1,499.94	—
Jessieville—L. A. Tirbble	37.50	5.00
Lake Hamilton	224.69	—
Lee Chapel—Mac S. Gates	63.72	—
Lonsdale—Heber E. Shreve	14.56	—
Malvern, First—Don Hook	955.42	300.00
Malvern, Third—Dexter Blevins	450.00	—
Memorial—Joe C. Melton	59.79	—
Mill Creek—Lonnie Simpson	28.17	4.34
Mountain Pine—R. G. Tucker	—	—
Mt. Vernon—Robert Svils	34.71	—
North Fork	6.00	9.31
Owensville—Clarnece Shell, Jr.	49.48	—
Park Place—James Fitzgerald	1,170.00	—
Pearcy—Ernest Rushing	24.00	—
Piney—William West	423.02	—
Pleasant Hill—Floyd Pannell	127.00	—
Ridgecrest—Herman Keppler	86.99	—
Shorewood Hills—Edgar Harvey	98.63	—
Union—Trelland Tiller	27.75	—
Walnut Valley—Curtis Pennington	211.12	—
TOTALS	\$14,634.48	\$719.90
CLEAR CREEK ASSOCIATION		
Alma—Kenneth R. Grant	\$ 725.07	\$ 20.00
Altus	—	—
Cass—Carroll J. Vaughan	—	—
Cedarville—David L. Land	53.35	—
Clarksville, 1st—Leland Hall	800.00	—
Coal Hill	41.30	—
Concord—S. A. Haley	—	—
Dyer—H. J. Morris	20.00	—
Hagarville	—	—
Hartman—J. L. Allen	—	—
Kibler—Muri Walker	529.70	—
Lamar	20.00	10.97
Mountainburg—Irving Crossland	25.00	—
Mulberry—Dan L. Berry	221.95	—
North Liberty	—	—
Oak Grove—P. J. Crowder	105.00	—
Oakland	—	—
Ozark—Dell Hames	582.16	—
Ozone	15.00	—
Rudy—Richard Hill	—	—
Shady Grove	22.00	—
Shibley—Eddie W. Smith	16.40	—
Spadra—J. L. Allen	10.00	—
Trinity (Crawford Co.)—H. G. Milam	17.17	—
Trinity (Johnson Co.)—H. K. Williams	—	10.59
Union Grove	10.13	3.80
Uniontown—E. W. Kaylor	24.62	—
Van Buren—T. H. Jordan	1,249.98	—
Webb City—Audra Martin	45.00	—
White Oak—O. V. Stubbs	10.00	—
Woodland—H. K. Williams	—	—
TOTALS	\$ 4,543.83	\$ 45.36
CONCORD ASSOCIATION		
Badley Hill—A. G. Escott	\$ 734.53	\$ 25.00
Barling—E. M. Logue	60.00	—
Bloomer—R. P. Davis	15.00	—
Booneville—John W. Johnston	1,255.06	18.04
Branch—Hershel Holmes	—	—
Burnville—A. D. Kent	6.00	—
Calvary—William B. Williams	2,810.16	—
Charleston—E. J. Tankersley	373.01	—
East Side—Hollace H. Combs	165.14	—
Excelsior—L. L. Gilliam	22.50	—
Ft. Smith, First—J. Harold Smith	13,000.00	300.00
Glendale—A. D. Kent	12.50	—
Grand Avenue	2,275.29	—
Greenwood—James W. Benton	414.85	14.11
Hackett—Fred David	—	—
Harmony—D. O. Stuckey	—	—
Immanuel—S. W. Eubanks	1,575.00	235.00
Jenny Lind—Truman Moore	136.80	—

Churches and Pastors	Cooperative Program	Designated
Lavaca—C. D. Peoples	200.00	12.79
Magazine—A. H. Maness	69.50	—
Mill Creek—Harlan A. Abel	239.97	—
Mixon—A. D. Kent	—	—
Mt. Harmony	—	—
Mt. Zion	—	—
Northside—Herman Sandford	30.00	—
Palestine—H. G. Milam	17.50	—
Paris—Dale McCoy	1,196.39	—
Pine Log	10.00	—
Ratcliff	10.00	—
Roseville	—	—
Rye Hill—S. C. Simpson	95.90	12.84
Southside—V. H. Coffman, Sr.	1,215.91	13.64
Spradling—Tom McClain	411.00	—
Temple—E. U. Adams	639.85	—
Trinity—Mason E. Bondurant	1,713.27	—
Union Hall	—	—
Vesta—Earl Story	—	—
TOTALS	\$28,705.13	\$631.42
CONWAY-PERRY ASSOCIATION		
Adona—Claude Clay	\$ 15.00	\$ —
Bigelow—W. R. Brown	29.00	—
Casa—R. L. Whitten, Jr.	45.00	—
Harmony—Homer D. Myers	5.00	—
Houston—Leonard Lovell	15.00	—
Immanuel—H. D. Palmer	6.00	—
Morrilton—Ed F. McDonald, Jr.	1,575.54	—
Nimrod—Edwin Powers	30.00	—
Perry—Gordon Bachus	25.30	—
Perryville—J. A. Augustine	50.00	—
Pleasant Grove	—	—
Plumerville—Merle A. Johnson, Jr.	90.00	2.22
Solgohatchie—John L. Griffith	—	—
Thornburg—Zib H. Oliver	14.07	—
Union Valley—T. W. Smith	18.36	—
TOTALS	\$ 1,918.27	\$ 2.22
CURRENT RIVER ASSOCIATION		
Bethany	\$ —	\$ 20.00
Biggers—D. K. Foster	—	—
Bristow	2.00	—
Columbia Jarrett	9.98	—
Corning—Andy Heskett	—	—
Cypress Grove—Jack Wicker	60.00	—
Dell—Herschel Murdoch	—	—
Hopewell—G. E. Neely	15.00	4.92
Moark	10.00	—
Mt. Pleasant—R. E. Jones	18.00	—
New Home	10.00	12.00
Oak Grove—Howard King	—	—
Pocahontas—B. D. Smith	240.00	—
Ravenden Springs—Fred Westmoreland	26.00	—
Reese Ridge	6.00	—
Reyno—Barney Rickman	50.51	—
Sanders—O. W. Davis	6.00	—
Shannon—Ralph Cadwell	112.39	8.94
Shiloh (Clay Co.)—G. E. Neely	15.00	—
Shiloh (Randolph Co.)—Grant Whitmore	5.00	—
Success—S. R. Sherman	61.74	—
Whitts Chapel—Wilbur Beadle	30.00	59.05
TOTALS	\$ 677.62	\$104.91
DARDANELLE-RUSSELLVILLE ASSOCIATION		
Atkins—Klois Hargis	\$ 135.00	\$ —
Bakers Creek—Aubrey O'Quinn	—	—
Belleville	50.00	—
Bluffton—J. S. Compere	18.00	—
Calvary—J. V. Foster	20.00	—
Centerville—Charles Hern	9.00	—
Danville—Jack Hull	105.00	—
Dardanelle—James G. Hoggard	250.02	—
Dover—Ray Tweed	13.09	—
East Point—Glynn Koffman	49.12	—
Havana—John L. Clement	30.00	—
Hopewell—Aubrey O'Quinn	—	—
John Grave Memorial	—	—
Knoxville—Cletus Colvett	54.89	—
London—Homer B. Moran	15.00	—
Mount Vernon—Alix Evans	—	—
New Hope—Charles Hern	44.12	8.53
Ola—Ernest Baker	20.00	—
Pittsburg—George Robinson	5.00	43.00
Plainview—J. S. Compere, Jr.	33.32	—
Pleasant View—J. D. Seymour	10.00	—
Rover	—	—
Russellville—A. E. Webb	2,380.80	1.00
TOTALS	\$ 3,242.16	\$ 52.53
DELTA ASSOCIATION		
Arkansas City—H. M. Haney	\$ 227.00	\$ 47.91
Aulds—Leroy Brady	18.00	—
Bayou Mason—R. L. Blackwell	24.74	—
Bellaire—Leon Simpson	120.00	—
Bethel—J. M. Divine	—	—
Boydell—Dewey Brockwell	2.00	—
Central Lake Village—E. H. Acuff	—	—
Chickasaw—J. A. Kuehn	30.00	14.60
Chicot	49.72	—
Collins—G. O. Douglas	18.00	—
Crooked Bayou—Mancel Howie	15.00	80.00
Daniels Chapel	21.00	—
Dermott—E. T. Carruth	601.64	—
Eudora—Homer A. Bradley	893.59	—
Gaines—E. D. New	11.69	—
Halley—Johnny Hughart	18.39	—
Jennie—Roy C. Maddux	54.68	—
Jerome—M. M. Doss	—	—
Kelso, Rohwer—E. H. Acuff	73.00	—
Lake Village—C. R. Pierce, Jr.	1,125.00	90.00
McArthur—L. J. Tucker	—	—
McGehee—Cline Ellis	2,479.83	—
Midway—Louis Warren	9.00	—
Montrose—W. A. Pruitt	—	—
New Hope—L. J. Ready	46.66	—
New Liberty	—	—
Oak Grove—L. J. Tucker	—	—
Omega—Jack Barnes	—	—

Churches and Pastors	Cooperative Program	Designated
Parkdale	—	—
Pleasant Ridge—J. W. Allen	—	—
Portland—Harold Elmore	103.59	—
Richland	—	—
Tiller—Walter C. Goetz	75.00	22.19
Watson	168.07	—
Wilmoth—Harold O'Bryan	450.00	121.00
TOTALS	\$ 6,635.60	\$375.70
FAULKNER ASSOCIATION		
Bee Branch—A. D. Taulbee	\$ —	\$ —
Beryl—Thomas B. Walls	60.00	—
Bono—J. W. Henderson	4.00	—
Brumley Chapel—Charles Mason	69.82	—
Cadron Ridge—Floyd Wright	—	—
Cold Springs	—	—
Conway, 1st—James H. Street	1,800.00	—
Conway, 2nd—O. M. Stallings	180.00	15.39
Emmanuel—J. C. Pyles	—	—
Enola—E. F. Simmons	12.00	—
Formosa—George Harris	—	—
Friendship—Vonnice Harmon	—	—
Happy Hollow—E. F. Simmons	5.00	—
Holland—Morris Smith	5.00	—
Lone Star—H. A. Nettles	—	—
Mayflower—Orland Beard	15.00	—
Mt. Vernon—Frank Anderson	30.00	—
Naylor—J. W. Henderson	5.00	—
New Bethel	2.00	—
Oak Bowery	31.25	—
Pickles Gap—T. W. Hayes	75.00	—
Pleasant Grove—Don Jones	120.00	—
South Side—George Harris	15.00	—
Union Hill—J. D. Reeves	12.00	—
Wooster—Jerry St. John	—	—
TOTALS	\$ 2,441.07	\$ 15.39
GAINESVILLE ASSOCIATION		
Austin—Ishmel Parker	\$ 30.01	\$ —
Browns Chapel—Ledell Bailey	35.01	—
Greenway, Ledal Jackson	20.00	—
Harmony	—	—
Halley Island—Jesse Whitlock	—	12.00
Knobel—Ledell Bailey	38.70	—
Leonard—Vance Marberry	63.34	—
New Hope—Howard H. King	45.14	—
Nimmons—E. W. Gray	50.00	—
Nutts Chapel—R. C. Rogers	25.00	—
Peach Orchard—Alvin Allison	27.60	10.00
Piggott—E. Clay Polk	1,379.41	—
Pollard	12.50	—
Rector—Lawrence Ray	364.39	—
Rink—Wilbur Beadle	5.95	—
St. Francis—S. R. Pillow	21.00	—
Tipperary—Raymond Lyons	9.00	—
TOTAL	\$ 2,125.05	\$ 22.00
GREENE COUNTY ASSOCIATION		
Alexander—Oscar Creech	\$ 72.00	\$ —
Beech Grove	—	—
Bethel Station—Carl Hodges	15.00	—
Big Creek—Jimmy Whitlock	12.00	—
Brighton	12.00	—
Browns Chapel—Paul Phillips	62.27	—
Center Hill—John McCollum	—	—
Childress—J. O. Miles	105.00	—
Clarks Chapel—Joe Hester	27.00	—
Delaplaine	18.00	—
Eight Mile—John Ed Collier	21.00	—
Epsaba	—	—
Fairview—Carl Hodges	12.45	—
Finch—Neal May	9.35	—
Fontaine	8.37	—
Lafe	2.00	9.20
Light—Johnnie Lemmons	75.00	5.00
Marmaduke—M. E. Clem	64.09	—
Mounds—Walter E. Allen	66.81	—
Mt. Hebron—Lewis D. Huguen	40.31	3.90
New Friendship—Claybourne Myhan	10.00	4.55
New Hope—A. C. Rudloff	20.00	—
New Liberty—H. O. Schultz	21.00	10.00
North End Mission—James H. Sanderson	—	—
Oak Grove—A. C. Rudloff	51.68	—
Paragould East Side—Russell Duffer	473.58	—
Paragould, 1st—Jerry Autry	2,166.16	—
Paragould, Immanuel—Emmett Pipkins	43.07	—
Paragould, Lake Street—O. C. Wright	31.05	3.00
Paragould, South Side Mission	—	—
Paragould, Third Ave.—H. G. Rhea	66.64	—
Pleasant Valley	—	—
Robbs Chapel—T. F. Stroud	11.36	—
Rock Hill—Kenneth Morgan	9.00	—
Spring Grove	12.50	—
Stanford—John Garland	16.00	—
Stonewall—Charles Abanathy	—	—</

QUARTERLY REPORT

Table with columns: Churches and Pastors, Cooperative Program, Designated. Includes entries like Greenlee Memorial, Oak Grove, Pine Bluff, etc.

HOPE ASSOCIATION

Table with columns: Churches and Pastors, Cooperative Program, Designated. Includes entries like Anderson Union, Antioch, Arabella Heights, etc.

INDEPENDENCE ASSOCIATION

Table with columns: Churches and Pastors, Cooperative Program, Designated. Includes entries like Batesville, Calvary, Cord, etc.

LIBERTY ASSOCIATION

Table with columns: Churches and Pastors, Cooperative Program, Designated. Includes entries like Buena Vista, Caledonia, Callon, etc.

Table with columns: Churches and Pastors, Cooperative Program, Designated. Includes entries like Gallilee, Harmony, Hill Side, etc.

LITTLE RED RIVER ASSOCIATION

Table with columns: Churches and Pastors, Cooperative Program, Designated. Includes entries like Brownsville, Concord, Edgement, etc.

LITTLE RIVER ASSOCIATION

Table with columns: Churches and Pastors, Cooperative Program, Designated. Includes entries like Ashdown, Ben Lomond, Bingen, etc.

MISSISSIPPI ASSOCIATION

Table with columns: Churches and Pastors, Cooperative Program, Designated. Includes entries like Armored, Black Water, Blytheville, etc.

Table with columns: Churches and Pastors, Cooperative Program, Designated. Includes entries like Number Nine, Osceola, Rosa, etc.

MOTOR CITIES ASSOCIATION

Table with columns: Churches and Pastors, Cooperative Program, Designated. Includes entries like Adrian, Allen Park, Antioch, etc.

MT. ZION ASSOCIATION

Table with columns: Churches and Pastors, Cooperative Program, Designated. Includes entries like Bay, Bethabara, Black Oak, etc.

NEWTON ASSOCIATION

Table with columns: Churches and Pastors, Cooperative Program, Designated. Includes entries like Cassville, Deer, Jasper, etc.

OUACHITA ASSOCIATION

Table with columns: Churches and Pastors, Cooperative Program, Designated. Includes entries like Acorn, Bethel, Board Camp, etc.

PULASKI COUNTY ASSOCIATION

Table with columns: Churches and Pastors, Cooperative Program, Designated. Includes entries like Alexander, Amboy, Baptist, etc.

(Continued on Page Sixteen)

Churches and Pastors	Cooperative Program	Designated	Churches and Pastors	Cooperative Program	Designated	Churches and Pastors	Cooperative Program	Designated
(Continued from Page Fifteen)			Prescott, 1st—Wesley A. Lindsey	510.00		Pleasant Valley		
Bethany—L. G. Miller	220.13		Richwoods—Johnnie R. Price	194.00		Red Oak—William E. Piercey	15.00	
Bethel—Billy Campbell	10.00		Sayre—Marvin Reynolds	4.00	15.34	Rivervale—Joe Warbington	5.00	
Broadmoor—Wesley Pfuden			Shady Grove—J. W. Barfield	19.00		Shiloh		
Calvary, Little Rock—Riley Munday	845.97		Shiloh—Jimmie Doolittle	18.00		South McCormick—Romie Kennedy		
Calvary, Rose City—P. D. Sullivan	536.68		South Fork—Loy Garner	15.00		Spear Lake—Bobby Crabb	27.47	
Capitol Hill—C. S. Maynard	43.57		Sycamore Grove—Melvin Hampton	30.87		Trumann—J. M. Basinger	312.00	
Cedar Heights—R. W. Bishop	163.12		Unity—R. C. Daily	36.00		Tryon—Earl C. Edwards	1,135.27	
Central, NLR—C. Gordon Bayless	675.00		Wheeler Springs—Raymond Mitchell	15.00		Valley View—Charles Carey	36.00	
Concord, First—E. D. Smidt	73.19		TOTALS	\$ 5,854.02	\$ 19.89	Waldenberg—Roy Richards	19.82	
Crystal Hill—Marion Grubbs			ROCKY BAYOU ASSOCIATION			Weiner—Jesse Holcomb	67.80	
Crystal Valley—Lee Lewis	39.51	1.86	Bellvue—Nobel Wiles	15.00		West Ridge—Frank Bumpas		
Davis Chapel	45.00		Calico—D. M. Kreis	30.45		TOTALS	\$ 3,177.51	
Douglasville—R. F. Weeks			Evening Shade	9.75		WASHINGTON-MADISON ASSOCIATION		
East End—George Fox			Finley Creek—Porter Cowley	12.00	1.85	Berry Street—Guy Hopper	75.00	
Estes Chapel—Alex Davenport			Franklin—Vestal Dean	12.65		Bethel, Fayetteville—Al Felts	22.00	
Forty Seventh St.—Eugene Ryan	226.44		Guion—G. M. Roberts	10.88		Black Oak—Ray Parker	27.00	
Friendship—Charles LeCicero	120.89		Lone Star	6.00		Brush Creek—Elesha Holland	40.00	
Garden Homes—Jack McKinnon	128.77		Melbourne—A. F. Muncy	120.00		Caudle Avenue—Roe Matthews	225.00	
Gaines Street	2,147.58		Mt. Pleasant—G. M. Roberts			Elkins	14.00	
Geyer Springs—Jack Parchman	119.02	2.37	Oxford—J. W. Shields	15.00		Farmington—Glenn Steale	84.80	
Grace, North Little Rock—L. C. Tedford	100.00		Sage	40.00		Fayetteville, 1st—Andrew Hall	2,350.03	
Gravel Ridge—H. J. Adkins	113.00		Saints Rest—Joe Staggs			Fayetteville, 2nd—Norman V. Drake	45.00	
Graves Memorial—Jesse Whitley	26.00		Sidney	20.74		Friendship	7.11	6.30
Harmony—Floyd Emmerling	24.24		Wiseman			Hindsville—D. W. Alderson	27.00	
Hebron—Curtis Bryant	571.51		Zion Light—Vestal Dean	10.25		Huntsville—R. W. Jones	10.00	
Highway—G. E. Nethercutt	105.00		TOTALS	\$ 302.72	\$ 1.85	Immanuel, Fayetteville—G. W. Morrison	122.68	
Holly Springs—James Johnson			STONE-VAN BUREN-SEARCY ASSOCIATION			Johnson—Oakley Long	39.04	
Immanuel—W. O. Vaught, Jr.	12,911.67	304.00	Clinton—R. A. Bone	\$ 221.23		Liberty—A. J. Scott	41.30	
Ironton—Glen Toler	113.98		Corinth—Arlie Bonds			Lincoln—Jesse Coleman	154.64	11.47
Jacksonville—Robert McMillan	1,321.08		Evening Shade—Cecil Harness	12.00		Prairie Grove—John B. Stephens	30.00	
Levy—W. Harry Hunt	600.00		Halfmoon—Thomas Simmons			Providence—Walter Jesser	154.39	
Liberty—W. L. Wadley	4.00		Leslie—Dale Barnett	105.00		Senora—Jim Blair	2.00	
Life Line—Lawrence Kendrick	75.00		Lexington—Chester Roten	23.34	10.00	Springdale—Burton A. Miley	3,000.00	5.20
Little Rock, 1st—Nolan P. Howington	10,440.16		Marshall—Russell K. Hunt	290.80	12.94	Spring Valley—R. A. Cornelious	20.87	
Little Rock, 2nd—Dale Cowling	10,770.80	500.00	Mountain View—R. D. Harris	48.00		Sulphur City—Jack Taylor	79.20	
Longview, C. E. Lawrence	50.00		Mt. Zion			University, Fayetteville—Walter Johnson	561.86	
Markham Street—Ben Haney	60.00		New Hopewell—Chester Roten	30.92		West Fork	30.00	
Martindale—Jimmie Watson	75.00		Fee Dee—J. D. Reeves	10.00		Winslow—Robert Vaughan	77.78	
Mt. View No. 1—T. F. Cupples	17.50		Plant—T. W. Simmons	12.00		TOTALS	\$ 7,240.70	48.00
Mt. View No. 2—Marvin Hill	40.00	7.58	Pleasant Valley—W. J. Drake			WHITE COUNTY ASSOCIATION		
Nails Memorial—Damon Shook	91.00		St. Joe—L. C. Tilley	29.56		Antioch—J. R. Pruitt	8.00	
Natural Steps—W. W. Scott			Scotland—J. M. Hayes	23.18		Beebe—Reese Howard	180.00	
North Little Rock, 1st—Horace B. Marks	857.88		Shady Grove—W. J. Drake	10.00		Bethany, Georgetown—Walter Baker		
North Point—E. O. McElroy	8.57		Shirley—H. B. Mifflin	75.81	7.55	Central, Bald Knob	162.50	
Oakwood—Troy Akers	16.49	34.35	Snowball—Dale Barnett	25.91	3.32	Crosby	24.00	
Park Hill—E. L. South	904.45		Zion	15.00		El Paso—E. S. Ridgeway	41.85	
Pike Avenue—R. H. Dorris	983.32		TOTALS	\$ 932.75	\$ 33.81	Griffithville—Ernest Anderson	20.00	
Pine Grove—Roy Hilton	300.23		TRI-COUNTY ASSOCIATION			Harris Chapel		
Plainview—H. N. Hutto	260.32		Antioch—E. D. Havner			Higginson—Harold Stephens	12.28	
Pleasant Grove—E. W. Goodson	74.65		Barton's Chapel—Bill Johnson	69.25		Holly Grove—Don Wright	10.00	
Pulaski Heights—W. H. Hicks	4,379.47	151.86	Beck Spur—Kenneth Threet	80.00		Judsonia—W. R. Woodell	337.50	
Remound—Floyd Simmons	204.33		Calvary—Russell Clubb	536.99		Kensett—Glen Giles	100.79	
Reynolds Memorial—Guy S. Wilson	235.00	5.00	Cherry Valley—Curtis Downs	91.93		Liberty, Walker—Don Wright	18.89	
Riverside—J. C. Myers	59.10		Crawfordsville—Cordia Reynaud			Liberty Hill—Earl Alton		
Roland—G. A. Keeling	18.00		Earle C. M. Savage	1,024.71	300.00	McRae—Charles Trammel	10.00	
Rosedale—Jack Hogue		8.00	Fair Oaks—Edward R. Black	15.00		Midway—L. L. Pate		
Shady Grove	118.73		Faith—W. A. McKay	10.00		Morrow—J. B. Howard		
Sherwood—L. M. Andrews	89.35		Fitzgerald Crossing			Mt. Hebron—E. Fred Harris	7.50	
Sixteenth St.—James Thompson			Forrest City—T. K. Rucker	1,300.00		Mt. Sidon—Luther Bynum	15.00	
South Highland—Ray Branscum	1,360.78	13.86	Fortune—Edd Jones	7.40		Pangburn		
South Side, T. S. Cowden	20.00		Gladden			Pleasant Valley—J. G. Holmes	15.00	
Stanfill	13.91		Grace, West Memphis—T. D. Douglas			Rescue	7.50	
Sylvan Hills—Walter Hill	261.04		Harris Chapel—E. G. Waddell	90.00		Rocky Point—J. C. Montgomery	12.00	
Trinity—Preston Taylor	10.00		Hulbert—Edward F. Connelly			Rose Bud—Walter Baker	21.00	
Tyler Street—Carl M. Overton	871.71	183.82	Hydrick—J. E. DuBois	6.00		Royal Hill		
Vimy Ridge—Ralph Ferguson	5.00		Jericho—A. G. Anderson			Searcy—W. R. Vestal	2,112.18	
Welch St.			Liberty			Searcy, 2nd—Allen McCurry	45.00	
West Side—T. P. Gladden	40.00	20.00	Madison—Jessie Hodges	15.00		Smyrna—J. G. Holmes		
Woodlawn—Horace Grigson			Marion—Freeman McMenis	235.07		Union Valley—John Pruitt	9.00	
Woodson—Carl Johnson	64.32		Mays Chapel			West Point—Glen Giles	6.00	
Zion Hill—M. E. Faulkner	54.00		Mt. Pisgah			TOTALS	\$ 3,175.99	
TOTAL	\$62,932.56	\$1,490.10	Palestine—Henry Applegate			WHITE RIVER ASSOCIATION		
RED RIVER ASSOCIATION			Parkin—Ray Y. Langley	600.00		Antioch		
Anchor—Bobby Denton	22.82		Riverside—W. M. Thompson	5.00		Cotter—M. E. Dark	239.00	11.95
Antoine—Leon Dawson	36.00		Shell Lake—S. J. Meador	15.00		East Cotter—R. V. Carroll		
Arkadelphia, 1st—David O. Moore	3,104.70		Tilton—Lewis Bankster			Flippin—P. O. Harrington	127.12	
Arkadelphia, 2nd—Stanley Cooper	659.06		Togo—J. W. Deaton	15.00		Gassville—Ernest Baker	30.00	
Arkadelphia, Park Hill—Ivan Marks	36.00		Turrell—J. T. Midkiff	25.44		Hopewell—Troy Melton	12.56	
Arkadelphia, 3rd St.—C. R. McCollum	100.08		Vandale	19.00		Mountain Home—Harold Presley	357.04	
Beirne—Harold Wilson	91.67		West Memphis—Walter Yeldell	2,243.15		New Hope—John Stratton		
Bethel—Don Cooper	35.97		Wallin Chapel			Norfolk—O. I. Ford	30.00	
Bethlehem—Edward Turner	12.00	4.55	West Side—Allen Van Horn	13.00		Oakland—John Walker		
Boughton—Ernest Banton	12.00		Wheatley—W. F. Carlton	162.39		Pilgrims' Rest		
Caddo Valley—Grady Dickens			Wynne—Boyd Baker	1,046.30	150.00	Pleasant Hill—Roy Dunn	30.00	
Center Point—Guy Branscum	15.00		TOTALS	\$ 7,625.63	\$450.00	Whiteville—Edward Elrod	60.00	2.80
Curtis—Bill Heath	99.26		TRINITY ASSOCIATION			Yellville—John R. Stratton	104.60	
DeGray—Mark D. McCollum	84.34		Anderson Tulley—James L. Jones	\$ 6.86		TOTALS	\$ 990.32	\$ 14.75
Emmett—Lewis K. McClendon			Bethel—Lynn Havner			WOODRUFF ASSOCIATION		
Fairview—C. D. Reynolds			Black Oak			Augusta—Thomas E. Lindley	\$ 525.00	
Gurdon, Beech St.—Harold Hightower	630.00		Corners Chapel—Charles Davis			Cotton Plant	400.60	
Harmony Hill—Kenneth Leach	18.25		East Side, Trumann—Howard Newall			Good Hope	7.05	
Hollywood—Henry Hill	10.00		Faith—Forest D. Bynum	12.00		Gregory—Gerald Perry	40.00	
Lakeview—Edwin Newcomb	15.00		Fisher—G. W. Boyd			Hunter—Marion Parish	64.89	
Mt. Bethel—M. L. May	5.00		Freer—Frank Durham	23.80		McCorry, First—Thomas E. Farrar, Jr.	120.00	30.00
Mt. Olive—Preston Baumgardner			Greenfield—J. C. Mitchell, Jr.	37.00		Morton Baptist	5.00	
Mt. Zion—Ferrell Morgan	15.00		Harrisburg—L. H. Davis	588.00		Patterson, First	3.00	
Okolona—Edward Turner	12.00		Lebanon—A. M. Houston	6.97		Pleasant Grove—J. N. Lofton	14.97	
			Lepanto—R. B. Crotts	447.52		Raynor Grove—R. D. McEwen	22.47	
			Maple Grove—Moran Burge			Riverside	2.00	
			Marked Tree—D. Bernard Beasley	353.26		Tupelo, 1st—Randall Merrell	25.00	
			Neiswander—Louie N. Travis			White Lake		
			Pleasant Grove—A. M. Houston	39.66		TOTALS	\$ 1,229.91	\$ 30.00
			Pleasant Hill—Carl Appling	44.08		Miscellaneous		2,265.00
						GRAND TOTAL	\$303,201.79	\$10,185.54