

Ouachita Baptist University

Scholarly Commons @ Ouachita

Ouachi-Talk

Ouachita Alumni

11-5-1984

November 5, 1984

Office of Student Services

Follow this and additional works at: <https://scholarlycommons.obu.edu/ouachitalk>



Part of the [Organizational Communication Commons](#)

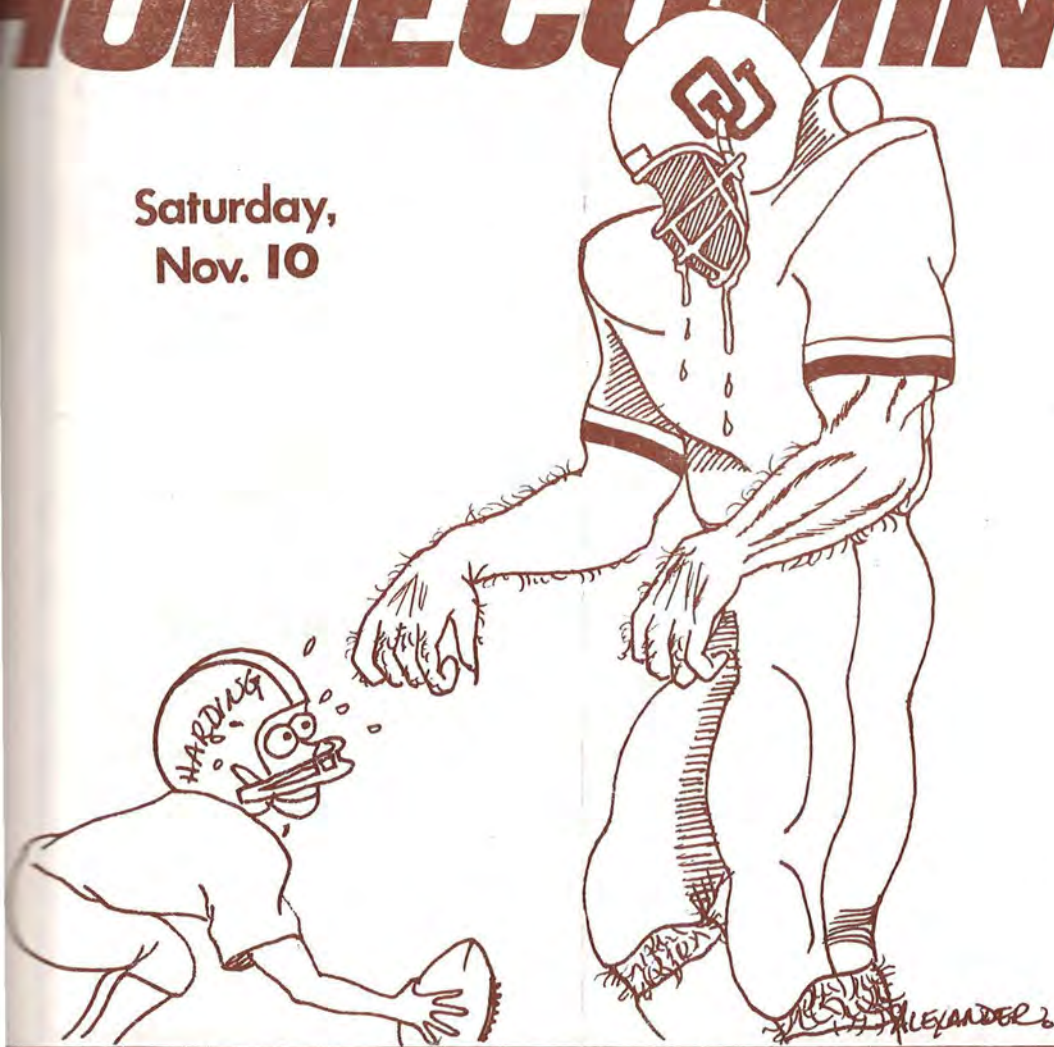
OUACHI-TALK

A WEEKLY NEWSLETTER TO THE OUACHITA BAPTIST UNIVERSITY
FAMILY FROM THE OFFICE OF THE DEAN OF STUDENTS

Vol. VIII, No. 10, Nov. 5, 1984

HOMECOMING

Saturday,
Nov. 10



**OUACHITA BAPTIST UNIVERSITY
TIGERS' BASKETBALL SCHEDULE
1984-1985**

Nov. 12	East Texas Baptist	Marshall, TX
23-24	Dallas Baptist Classic	Dallas, TX
27	East Texas Baptist	Arkadelphia
Dec. 3	Louisiana College	Arkadelphia
4	Stephen F. Austin	Nacogdoches, TX
6	Dallas Baptist	Arkadelphia
15	UA Pine Bluff	Arkadelphia
Jan. 3	UA Pine Bluff	Pine Bluff
7	U. Central Arkansas	Arkadelphia
10	UA Monticello	Monticello
14	Henderson State	Ouachita
17	Arkansas College	Batesville
19	Hendrix College	Arkadelphia
21	Harding University	Searcy
24	C. of the Ozarks	Clarksville
28	Arkansas Tech	Arkadelphia
31	Southern Arkansas	Magnolia
Feb. 2	U. Central Arkansas	Conway
4	UA Monticello	Arkadelphia
7	Henderson State	Henderson
11	Arkansas College	Arkadelphia
14	Hendrix College	Conway
16	Harding University	Arkadelphia
18	C. of the Ozarks	Arkadelphia
21	Arkansas Tech	Russelleville
25	Southern Arkansas	Arkadelphia

HEAD COACH: Bill Vining
ASSISTANT COACH: Mike Reynolds

[Home games begin at 7:00 p.m.]

SOPH. COMP

The Sophomore Composition Exemption Examination will be given Thursday, November 1, at 1:30 p.m. in McClellan 100. Sign up in Grant Hall 105. This is a special administration for those who are not allowed to participate in the Course Preference Survey until the exam has been taken. The next regular test date is November 15.

Chapel

The Homecoming Chapel on November 6, will be comprised of testimonies from Scott Jackson and Scott Street, special music from Alex Sharp and the presentation of the Homecoming Court contestants. Students will be voting for the Homecoming Court during Chapel.



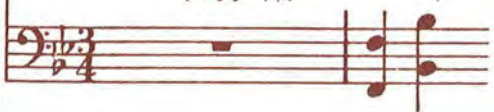
SENIOR PIANO RECITAL

DANA JONES

SENIOR VOICE RECITAL

BECKY LYONS

November 6, 1984
Mabee Fine Arts Center
Recital Hall
7:00 PM



Attention!

The Blue Key National Honor Fraternity will be holding their annual Homecoming Mum & Boutonniere sale October 29 thru November 9, The mums and boutonnieres will be sold in the lobby of Evans Student Center and in the cafeteria from 9:00 a.m. to 3:00 p.m. Mums are \$8.50 and boutonnieres are \$3.00.

**U
C
C
O
M
M
U
N
I
T
Y
E
V
E
N
T
S**

Monday, November 5

- Annual Homecoming Mum Sales, ESC, 9:00 a.m.
- Administrative Council Breakfast, BW Den, 7:00 a.m.
- Missions Awareness Workshop, McC 100, 7:30 p.m.
- Youth Ministry Workshop, FDR, 7:30 p.m.
- Course Preference Survey, November 5-9
- Southwestern Seminary Consort Singers, Men's Chorus, MFACRH, 4:00 p.m.
- BW Purple, Agape, 5:00 p.m.
- BW Alumni, Faculty Prayer Luncheon, 12:00 noon

Tuesday, November 6

- Senior Recital: Dana Jones & Becky Lyons, MFACRH, 7:00 p.m.
- Arkansas Baptist State Convention, Grand Avenue Baptist Church, Ft. Smith, AR
- FSA Ouachita Fellowship, Ft. Smith, AR
- RA Council, TM 107, 4:00 p.m.
- Annual Homecoming Mum Sale, ESC, 9:00 a.m.

Wednesday, November 7

- Arkansas Baptist State Convention, Grand Avenue Baptist Church, Ft. Smith, AR
- BW Purple, Blue Key, 12:00 noon
- Annual Homecoming Mum Sale, ESC, 9:00 a.m.

Thursday, November 8

- Pep Rally, Walton-Lamb Circle, 6:30 p.m.
- Rho Sigma Bonfire, North Campus
- Faculty Meeting, McC 100, 7:00 p.m.
- Sweet Communion, MH, 7-9 p.m.
- Annual Homecoming Mum Sale, ESC, 9:00 a.m.

Friday, November 9

- FSA Homecoming Reunion Dinner
- Annual Homecoming Mum Sales, ESC, 9:00 a.m.

Saturday, November 10

- Reading Practicum Class, McC 310, 9:00 a.m.
- Homecoming: OBU vs. Harding, here
- Homecoming Parade
- FSA Alumni Buffet, ESC Banquet Room, 12:00 noon
- S.E.L.F. Concert: The Cruse Family, Mitchell, 7:30 p.m.
- Soccer: OBU vs. Alumni, here, 10:00 a.m.
- Soccer: OBU vs. UALR, away, 3:00 p.m.



The Cruse Family

M.H., 7:30 P.M.
November 10 1984

**PRIORITY
RECORDS**
815/383 8000

But seek ye first the Kingdom of God, and His righteousness:
and all these things shall be added unto you. Matthew 6:33