

Ouachita Baptist University

Scholarly Commons @ Ouachita

Arkansas Baptist Newsmagazine, 1955-1959

Arkansas Baptist Newsmagazine

10-29-1959

October 29, 1959

Arkansas Baptist State Convention

Follow this and additional works at: https://scholarlycommons.obu.edu/arbn_55-59



Part of the [Christian Denominations and Sects Commons](#), [Mass Communication Commons](#), and the [Organizational Communication Commons](#)

Recommended Citation

Arkansas Baptist State Convention, "October 29, 1959" (1959). *Arkansas Baptist Newsmagazine, 1955-1959*. 184.

https://scholarlycommons.obu.edu/arbn_55-59/184

This Book is brought to you for free and open access by the Arkansas Baptist Newsmagazine at Scholarly Commons @ Ouachita. It has been accepted for inclusion in Arkansas Baptist Newsmagazine, 1955-1959 by an authorized administrator of Scholarly Commons @ Ouachita. For more information, please contact mortensona@obu.edu.

ARKANSAS

Baptist

OCTOBER 29, 1959



Associational Reports Reveal Character

IN A few days, the Arkansas annual associational meetings will be history. There are 44 associations in the Arkansas Baptist Convention. All of them have their annual meetings during September and October.

At these meetings, each church presents a record of what the church has been able to do during the past associational year. This record includes the number of church members; the number of baptisms; the amount of money contributed by the individual church members; and the amount of money the church gives to missions and benevolences. The report also includes the number enrolled in the different church organizations. In fact, everything that the church does to promote the Kingdom is included in the report.

The reports are tabulated by the associational Clerk, who in turn, sends a copy to our Arkansas Baptist Convention, 401 W. Capitol, and one to the Southern Baptist Convention office, 127 9th Ave., North, Nashville 3, Tenn.

This makes the annual associational reports vital to every phase of our Baptist life. Baptists have been keeping this type of records for centuries. They have paid dividends in more and better work being done for the Master. In a sense, the reports and records reveal the true character of our Baptist constituency. We can see our weak places and know our strong points. Then, with this information, plans can be made for future work.

These reports become permanent records and are used over and over through the years to promote all of our Baptist work, in the state and throughout the Southern Baptist Convention.

Therefore, we urge every clerk to get all the information that the report calls for and to fill in each item completely and accurately. In some instances, this means that the associational clerk must contact the church clerk, after the Annual Associational Meeting, in order to clarify some parts of the church report.

On the whole the records that come to our office are accurate and complete, but this is a reminder to the new clerks who were elected at the last annual meeting and are tabulating the reports for the first time.

We could not close this column without commending the associational clerks for the fine work that they do. It is a difficult and thankless task to keep the records of dozens of churches, yet it is amazing, indeed, that Baptists always manage to find some dedicated person who will take time to do it in the name of the Lord Christ. Let a denominational employee who works with the records say, "Thanks a million!"—Ralph Douglas, associate secretary. ■

Court Rejects Suit On Religion, Schools

MIAMI, Fla.—(BP)—A Miami circuit judge has rejected a suit seeking to halt Bible reading, recitation of the Lord's Prayer, and other religious observances in Dade County, (Miami) public schools.

Judge Fritz Gordon dismissed a suit filed by Harlow Chamberlin, North Miami, father of three school-age children. Two other similar suits filed later will probably meet the same fate.

The suit filed by Chamberlin complained specifically of practices authorized by the county school board. They included Bible reading, Bible instruction after school, recitation of the Lord's Prayer, hymn singing, observance of Christmas and Easter, religious symbols in classrooms, baccalaureate programs, religious census, and using religious criteria in hiring teachers.

Chamberlin said these practices were religious and sectarian.

The school board replied that the practices were not compulsory and did not constitute establishment of a religion. "The practices . . . are morally uplifting and educational in character

Widow's Mayonnaise Jar 'For State Missions'

PACOIMA, Calif.—(BP)—In Jesus' earthly ministry, it was the widow's two mites. In the 20th Century, it's the empty mayonnaise jar perched on top of the refrigerator in a home occupied by a Pacoima widow and her six children.

Mrs. Phyllis Slater's stewardship was discovered by her pastor on a visit to the Slater home. The jar bore a label "For State Missions." In it were some pennies, nickels, dimes, and quarters.

The widow explained, "Pastor, this is not our tithe. This is an over-and-above offering for state missions." She went on to say that she had promised the Lord to support missions despite her limited income and the financial needs of her family. ■

Ecclesiastical Circus Blamed for Failures

NASHVILLE —(BP)—An appeal is made in a Baptist periodical for churches to "stop making preachers ring-masters of an ecclesiastical circus."

This burden on ministers is given as one of the reasons why ministers suffer breakdowns. An article on that subject appears in the Baptist Program, monthly Baptist leadership magazine published here.

"Preachers are called primarily to preach. No preacher ever broke down doing that! But many have broken trying to be all things to all people in this mixed-up age," the magazine article adds. The writer is John V. Terry, a former pastor living in Decatur, Ark.

Among the work expected of a minister today, in addition to preaching, are administration, financial management, teaching, counseling, denominational duties, and public relations, the writer declares.

and properly inspirational," the board said.

BAPTIST HOUR SERMON TOPICS

NOVEMBER, 1959

Theme: Condemnation

- Nov. 1 "Look in the Mirror"
 8 "There's a Price on Your Head"
 15 "God Keeps Books on You"
 22 "You Are at God's Mercy"
 29 "Old Adams' Children"

City	Station	Time
Arkadelphia	KVRC	3:00 p.m.
Conway	KCON	7:00 a.m.
Corning	KCCB	1:00 p.m.
De Queen	KDQN	1:00 p.m.
El Dorado	KELD	2:30 p.m.
Forrest City	KXJK	9:30 a.m.
Hope	KXAR	5:00 p.m.
Jonesboro	KNEA	9:30 a.m.
Mena	KENA	1:30 p.m.
Monticello	KHBM	3:30 p.m.
Paragould	KDRS	8:30 p.m.
Paris	KCCL	
Siloam Springs	KUOA	7:30 a.m.
Van Buren	KDFD	10:00 a.m.
Wynne	KWYN	6:30 p.m., Sat.

"Mastercontrol"*

Corning	KCCB	10:30 a.m.
Forrest City	KXJK	10:00 a.m.
Ft. Smith	KWHN	12:30 p.m.
Little Rock	KTHS	12:00 p.m.
Paris	KCCL	4:00 p.m.
Siloam Springs	KUOA	10:00 a.m., Sat.

International Sunday School Lessons

Paragould	KDRS	10:15 a.m.
Rogers	KAMO	6:45 a.m., Fri.
Stuttgart	KWAK	6:30 p.m., Fri.
Wynne	KWYN	9:15 a.m.

This Is The Answer

El Dorado	KTVE-TV	4:30 p.m., Sat.
Fort Smith	KNAC-TV	10:30 a.m.

ARKANSAS BAPTIST

107 BAPTIST BUILDING
LITTLE ROCK, ARKANSAS

Official Publication of the
Arkansas Baptist State Convention

ERWIN L. McDONALD, Litt. D., Editor-Mgr.
MISS SHIRLEY JOHNSON, Ass't to Editor
MRS. E. F. STOKES, Circulation Mgr.
MRS. GARY LaRUE, Mail Clerk

Published weekly except on July 4 and December 25.

Second-class postage paid at Little Rock, Arkansas.

Individual subscriptions, \$2.25 per year. Church Budget, 14 cents per month or \$1.68 per year per church family. Club plan (10 or more paid annually in advance) \$1.75 per year. Subscriptions to foreign address, \$2.75 per year. Advertising rates on request.

The cost of cuts cannot be borne by the paper except those it has made for its individual use.

Articles carrying the author's by-line do not necessarily reflect the editorial policy of the paper.

Abbreviations used in crediting news items:

BP, Baptist Press; OB church bulletin; DP, Daily press; EP, Evangelical Press.

October 29, 1959

Volume 58, No. 43

Workshop Eyes Moral Problems

THE ROAD to alcoholism often starts with a drink or two to overcome the tired feeling one has at the close of a hard day at the office, or to bring temporary relief from frustration, fears, doubts, or feelings of inferiority, Dr. N. T. Hollis, Little Rock psychiatrist, said recently.

Dr. Hollis, one of the featured speakers at an all-day workshop at Little Rock's Winfield Methodist Church on the educational approach to civic and moral problems related to alcohol, narcotics, gambling, and pornography, declared that the effect of beverage alcohol on the human body is always detrimental.

The workshop, sponsored by the Christian Civic Foundation of Arkansas, with Dr. William E. Brown, executive director, presiding, was attended by church, school and civic and community leaders from Pulaski, Saline, Lonoke and Perry counties. Upwards of 100 attended.

The Pulaski delegation, in a business session at the opening of the workshop, perfected the organization of a county chapter of the state Foundation, naming Dr. Dale Cowling, 2nd Church, Little Rock, chairman. Other officers elected were: Rheubin South, pastor, Park Hill Church, North Little Rock, vice chairman in charge of legislation; Mrs. Edgar Dixon, Little Rock, vice chairman in charge of education; Lee I. Dance, superintendent of missions of the Pulaski Association, Little Rock, vice chairman in charge



EXECUTIVE DIRECTOR William E. Brown (center) of the Arkansas Christian Civic Foundation as he visited recently with Dr. Duke K. McCall, left, president, and Major William Wallace, executive secretary, of the National Temperance League, at a meeting of the league's executive committee, in Minneapolis, Minn.

of promotion; and Mrs. Paul Stuart, North Little Rock, secretary.

The immediate effect of alcohol on the human body is to remove normal restraint or inhibition and this is true for both men and women and in direct proportion to the quantity of alcohol consumed, Dr. Hollis said. There is no way of determining in advance who the potential alcoholic is, but statistics reveal that one out of every ten drinkers falls into this category, letting the drink habit interfere with his work, his social life, and his health, he said.

Three Categories

Speaking on "Motivation for Drinking," Miss Emogene Dunlap, Nashville, Tenn., secretary of youth work of the Methodist Board of Temperance, said that drinkers of alcoholic beverages fall into three categories: social, excessive, and compulsive. The difference between the excessive and the compulsive drinker, she said, "is that the excessive drinker could stop if he would and the compulsive drinker would stop if he could."

High-pressure advertising of beverage alcohol on television, radio, newspapers and magazines, along with the wide acceptance of drinking as socially desirable, was given as a major factor in the mounting incidence of alcoholism in America.

"The alcohol addict often has the feeling that no one else is faced with such personal problems as he has, and the counselor can often help him by showing him that he has no problems but those common to all," Miss Dunlap said.

Dr. A. C. Miller, Nashville, Tenn., secretary of the Christian Life Commission of the Southern Baptist Convention, speaking on "The Effect of Drinking on Society," said:

"Alcohol is not an evil in itself. Last year 500,000,000 gallons of alcohol were used for useful purposes in industry. It is widely used in the manufacture of paints, as solvent for medicines, for sanitary purposes and for the creation of beauty aids. It is only when man misuses it, making of it a beverage, that it becomes a curse. God did not intend for alcohol to be used as a beverage."

Robert Regan, Washington, D.C., legislative and rehabilitation director of the Methodist Board of Temperance, speaking on "Alcoholism," praised Arkansas' Commission on Alcohol and its program of rehabilitation. But he pointed out that the commission's annual budget of \$22,500 is far from adequate in the face of the fact that the state now has approximately 40,000 alcohol addicts.

Children Copy Parents

Nearly 30-percent of the children of parents who are alcoholics become alcoholics themselves, Mr. Regan said.

Leading a discussion on pornography, Miss Dunlap said the best approach to clearing undesirable magazines from the newsstands is through organizations such as the Christian Civic Foundation of Arkansas. Dr. Brown reported that county chapters of the Foundation have already dealt successfully with this evil, in 16 counties of the state.

As an indication of the urgency for action against the spread of salacious literature, Dr. Brown quoted J. Edgar Hoover, of the Federal Bureau of Investigation as saying recently there had been an increase of almost 700 percent in sex crimes in the United States in the past year and that in every case in which the criminal was apprehended he was found to possess pornographic materials.



Cover Story

Happy Relationship

THE RELATIONSHIP between a father and son, one of the richest blessings God bestows on man, becomes even dearer as the growing boy follows the examples set by a Christian dad.

BUT DO we have to beg?"

The question was asked the other day by a girl who lives in the Bottoms Baptist Orphanage, Monticello, our Arkansas Baptist Convention's home for children. It was prompted by the elaborate advertising campaign material prepared by Supt. H. C. Seefeldt and his associates to be used in persuading us Baptists to give \$100,000 in the annual Thanksgiving Offering for the children's home. It was directed to Brother Seefeldt, the only father many of the children in the home have ever known.

We do not know how the beloved superintendent answered. But he might well have replied: "Yes, Honey, you must beg!" And he would have been speaking from personal experience, for he is, let us face it, one of the biggest beggars in Arkansas. We have made him that. He and his staff and children ought not to have to beg us every year to provide for their living necessities, but they do! We have established the home, we have employed a staff—a fine, Christian, consecrated staff—and we have said, "We'll put you in the Cooperative Program for a third of your living [\$40,000 this year], but for the other two-thirds you'll have to 'scratch with the chickens' or 'root, hog, or die!'"

You don't see it so much any more, but superintendents of orphanages used to take some of their children out on the fund-raising circuit to help them beg. The more poorly clothed, the more bedraggled, the more unkempt in their appearance the children were, the more they were worth to the appeal. That would work marvelously in getting a good response this year to the Thanksgiving offering. But our children at Bottoms are like our own children. They are in school, they have normal, every-day lives to live as boys and girls. And they are, as we want them to be, well clothed, properly nourished and are being brought up in the fear and admonition of the Lord.

After next year it is hoped our children will not have to beg for their support. But until then, when all the orphanage budget is provided through the Cooperative Program, we must give liberally in the special offerings. Plan now to have a sacrificial part in giving \$100,000 this Thanksgiving to our children's home.

FREQUENTLY WE are reminded not to despise small beginnings. It was a letter from a lonely missionary in China—Lottie Moon—in 1888 which resulted in the institution of an annual offering at Christmas for foreign missions. Baptist women of the South, moved to compassionate action by Miss Moon's letter, took an offering at Christmas, 1888, and raised sufficient funds to send three additional missionaries. The special offering, named for Miss Moon, has been continued annually since that time. Only God could reveal what this has meant to the cause of foreign missions.

**Another Look
At Lottie Moon**

Recently we raised the question, in these columns, as to the wisdom of continuing to have a special offering for one phase of our world mission program, as represented by the Lottie Moon Offering. It should be emphasized here that we do not question the necessity for continued and growing support for this and all our causes. But, now that the Lottie Moon Offering is no longer a women's movement but has become a church-centered offering running to some \$8,000,000 annually, we wonder if the tail is not beginning to wag the dog, as far as this offering relates to the Cooperative Program and our total world mission program.

At the time of Miss Moon's letter of appeal, we had no Cooperative Program embracing all our work. In fact, this marvelous plan did not come into use in our Southern Baptist Convention until 1925, nearly 13 years after the death of Miss Moon aboard an American bound ship, in the harbor of Kobe, Japan, on Dec. 24, 1912. But now that we have a better way than special offerings for each and every agency and cause, as was the case before the Cooperative Program, surely there is some way to work the Lottie Moon Offering into the total structure without doing harm to foreign missions or to the Cooperative Program.

Might not the Lottie Moon Offering be continued as a special offering for world missions routing it through the Cooperative Program and changing the percentages so as not to hurt foreign missions? Do any of our readers have suggestions? Let us have them.

Deflated Egos

TRAVEL, it is often said, is broadening. But it is also deflating. When you go into a state or city you've never seen before and see how well they have been getting along without your presence or help, it sort of makes you feel useless,



ELM

doesn't it? Of course, it always peps you up a little to think how helpful your even brief and belated visit will be to them.

Another jarring experience is for a fellow who has been used to spending most of his time at the office where he is called "The Boss" to have to spend a whole day at

home with his family. And speaking of that let-down, don't-count-for-anything feeling, a writer the other day came up with a new guess as to why it is that wives, on the average, outlive their mates by several years. He thinks it is retirement. Even a so-called "working" wife does not have to worry about retirement. She will still have a full-time job left, running the house, after she is "retired."

But what's the pore olde husband going to do after years of high-pressure living in his business or profession when he reaches that doleful day when the official family of his firm gather briefly to give him his gold watch and wish him "happy retirement"? He has nowhere to turn, for his place of residence is his little wife's DOMAIN. She has long since had squatter's rights there.

Incidentally, one of our friends has solved this problem by converting one of the outhouses on his place into an "office" where he will have room for a chair, a table, some books and a 'phone. That way his wife will know how to get in touch with him if she needs anything from the grocery store, and he'll not be causing her to have a nervous breakdown trying to keep the house in order.

Seriously, being able to live with one's self, come what may, is one of the great concerns of the most of us. No doubt more people die from broken egos than from broken necks or broken backs. To live is to be wanted, to be needed, to be loved.

The chaplain who said to the mentally and emotionally upset lady: "Find a way to help those who cannot thank you," was pointing to a way of life made clear by Christ himself who said: The way to greatness is the path of lowly service.

Many a person in great sorrow or affliction has been able to take a new lease on life by helping others with their burdens.

An ego that is Christ-centered really cannot be deflated.

Erwin L. McDonald

The Bible Speaks on "Preaching"



Preach the word; be instant in season, out of season; reprove, rebuke, exhort with all longsuffering and doctrine.

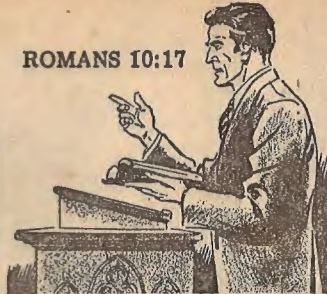
II Tim. 4:2

Even so hath the Lord ordained that they which preach the gospel should live of the gospel.

I COR. 9:14



ROMANS 10:17



So then faith cometh by hearing, and hearing by the word of God.



And this gospel of the kingdom shall be preached in all the world for a witness unto all nations.

MATTHEW 24:14

Letters to the Editor

THE PEOPLE SPEAK

'Getting Somewhere'

AS A LOUISIANIAN who is interested in Arkansas, I wanted you to know that I am interested in Associational work in Arkansas and as a new subscriber for **Arkansas Baptist** I wish to commend you for the information given in Oct. 15 issue of **Arkansas Baptist** (page 19) about the financing of Associational Missions in Arkansas.

Our people need more information about the work of financing programs of missions and there is an urgent need right around us, if we will look! I am especially interested in missions and thanks to you and the **Arkansas Baptist**, I believe we are "getting somewhere."—Pearl Pryor.

'Good for You' Ads

AS REPORTED in **Advertising Age**, Oct. 12, 1959, "The U. S. Brewers Foundation, at the request of Dwight E. Avis, director of the Alcohol and Tobacco Tax Unit of the U. S. Treasury Department, has cancelled the remainder of its 1959 ad program which included space in November issues of **Life**, **Look**, and **The Saturday Evening Post** plus a number of medical and other periodicals.

"Mr. Avis charged that U. S. Brewers Foundation's "Good for You" ad campaign was misleading in that it made curative and therapeutic claims. U. S. Brewers Foundation's board of directors denied that ads were misleading, but voted to drop the campaign."

Protest against this false and misleading advertising were filed with the Federal Trade Commission and Alcohol and Tobacco Tax Unit by the National Temperance League early in June 1959. The Methodist Board of Temperance and other groups also filed complaints.

The Brewers Foundation will already have run six of the seven "Good for You" ads in **Life**, **Look**, and the **Post**. It has canceled the final ad, scheduled to appear in **Life**, Nov. 16, **Look**, Dec. 8, and the **Post**, Dec. 5. The Barley and Malt Institute has canceled its last two ads scheduled in **Life**, Nov. 26 and Dec. 24.

Letters of appreciation should be sent to:

Hon. Dwight E. Avis, Director, Alcohol & Tobacco Tax Division, Internal Revenue Service, 12th & Constitution Avenue, Washington, D. C., or

Letters of appreciation should be sent to:

Hon. Earl W. Kintner, Chairman, Federal Trade Commission, Pennsylvania Avenue at 6th Street, Washington, D. C.

An article covering the action of the Alcohol and Tobacco Tax Unit will appear in the November **American Issue**.—Clayton M. Wallace, Executive Director.

A 'Dry' Arkansas

IT WAS certainly a joy to meet you and come to know you in Minneapolis. I rejoice that one of the editors of our state Baptist papers would take such an active part in the Temperance cause.

The activity that is being shown in the organization of the Christian Civic Foundation of Arkansas leads me to believe it could be possible that Arkansas would be the first state to return to state-wide Prohibition. I am glad you have the right to petition there in Arkansas and in my judgment there is no reason for losing the last election.—Roy S. Holloman, Superintendent, The Kansas United Dry Forces, Topeka

Asks Discussion

I WOULD like to see several questions discussed in the **Arkansas Baptist**. Among those I'm interested in are observance of pagan holidays, including Christmas, Easter, Lent and Halloween, and the use of flowers in the church.

These days are endorsed by churches, but they should never be observed by churches. Almost all the churches favor use of flowers, but according to verses 29 and 30 of Mark 12, and verses 4 and 5 of Deuteronomy 6, they are not supposed to have them in the church as worshippers are not supposed to look at them to admire them.

We should have nothing in the church to detract the attention from the regular worship. Jesus said that my house shall be a house of prayer, and I do not think we are in prayer when we are gathering flowers and making bouquets for the church.—J. Q. Pond, Louisville, Ky.

Only Catholic Politics

ON OCT. 7 the Rye Hill Baptist Church met in its regular monthly business meeting. Our church at that time voted to adopt a resolution to be suggested to the Association for adoption. This resolution read as follows:

"WHEREAS this body of Baptists consists of messengers of many local Baptist Churches in this state, and WHEREAS this body is independent of any other ecclesiastical body it also recognizes the dangers confronting democratic freedoms of Baptists.

"WE THEREFORE place ourselves firmly upon record that we are opposed to any Roman Catholic candidate being nominated or elected to the office of the Presidency of the United States. This opposition is not directed at the freedoms of the Catholic peoples; yet, it is directed at the allegiance they have to a foreign power outside of these United States, and above the laws, and governing forces of these United States.

"WE FURTHERMORE go on record as stating that we have no despite, ill-will or hate towards this particular religion. Rather, that our action only involves that we consider an opinion, and a move against a danger to our freedom."

After discussing this resolution it was voted upon, and accepted by the Concord Baptist Association. Then another motion was made to send this particular resolution to our state resolutions committee suggesting that it be studied in relation to our coming convention.

As a pastor I'm glad that Baptists are beginning to stir themselves to action against this shadow which looms on the horizon. Southern Baptists who have lived in predominately Catholic nations, and wherein predominately Catholic states (in the U.S.A.) have found that there is more to this danger than prejudice, bigotry or fanatics trying to sell their ware.

It is our sincere hope that every Baptist and Christian in America will not only pass resolutions like this; but, that they will register and be on hand to defend their nation at the polls from the possible loss of that precious heritage given by our forefathers.

Yours for the cause of religious liberty in America—Bill McIver, Pastor, Rye Hill Church, Ft. Smith.

Arkansas All Over

Ouachita Homecoming Slated for Saturday

CROWNING OF the queen at the night game on A. U. Williams Field will climax a flurry of homecoming activities at Ouachita College Saturday, Oct. 31.

Ouachita's Tigers will entertain the College of the Ozarks Mountaineers in the traditional homecoming game in an Arkansas Intercollegiate Conference clash at 8 p.m.

A parade through Arkadelphia Saturday afternoon will feature some 18 floats, the Tiger band, the college's ROTC cadet corps of more than 350 members with the 25-member Pershing Rifles drill team performing separately, and approximately 13 high school bands.

Past queens have also been invited to ride in the parade, as have members of the administration and the board of trustees.

The student senate, under the direction of Miss Nan Spears, president pro tem, is working on arrangements. Assisting in an advisory capacity are Michael Carozza, director of public relations, and Miss Linda Day, director of student activities. ■

W. B. O'NEAL supplied at Stanfill Church Oct. 11, when pastor Wayne Carter was ill. The following Sunday he supplied for Capt. Ray Thomas, pastor of Hilltop, who was called away for a funeral.

PLAINVIEW CHURCH, Arsenal, reports six by baptism, two by letter and 16 rededications at a recent revival. J. C. Myers was evangelist; Homer Haltom, pastor.

DR. THEODORE F. Adams, president of Baptist World Alliance and pastor of 1st Church, Richmond, Va., since 1936, was the speaker for the Peace lectures at 1st Methodist Church in Magnolia Oct. 19-22. (CB)

TWO MT. Zion Association churches have called pastors. Needham has called Oliver Dudley, student at Arkansas State College and former pastor at Jacksonport. Childress has called Harold Martin, West Memphis, a graduate of New Orleans Seminary who has been serving at Hulbert. (CB)



MARGIA NELL Doudy, daughter of Mr. and Mrs. Luther Doudy, Ashdown, has not missed Sunday School since she was baptized in 1954. She has attended for five straight years at Oak Grove Church.

MISS DOUDY



REV. AND MRS. Charles A. Tope, newly appointed missionaries to East Africa, look at photographs from some of the 40 countries where Southern Baptists have mission work. Mr. Tope grew up in Parkin, Ark. ■

DR. HERBERT M. Haney, chairman of the English Department and professor of Bible at Southern College, has had a book accepted for publication by Vantage Press, entitled *The Wrath of God in the Former Prophets*. Miss Helen Winner, editorial director, reviews the work as follows: "This is a scholarly and absorbing work of Biblical criticism dealing from both an ethical and historical standpoint with the great question of God's wrath in the writings of the Old Testament prophets." The book is scheduled for publication early in 1960.

TOMMIE HINSON, 1st Church, Paris, preached the sermon for the ordination of James Kinney to the ministry in Tushkla Church, Okla. Mr. Kinney was ordained a deacon by 1st Church, Paris, last November. (CB)

THIS MONTH the New York Bible Society is commemorating 150 years of service in America's largest city. The series of special events and services planned for the 150th Anniversary observance will extend through December.

Several hundred churches of the city will participate in these observances. At the same time radio and television spots will spearhead a read-the-Bible campaign directed at the city's 8 million people.

Attendance Report

October 18

Church	Sunday School	Training Union	Additions
Camden, Cullendale, 1st	488	242	
El Dorado, 1st	842	293	
Mission, Northside	60		
Fayetteville, 1st	667	249	6
Ft. Smith, Calvary	362	145	1
Hot Springs, Park Pl.	458	202	1
Jonesboro, Walnut St.	405	172	
Little Rock, Life Line	235	121	
Little Rock, Tyler St.	281	132	4
Magnolia, Central	762	346	
McGehee, 1st	496	230	1
Mission	61	35	
NLR, Baring Cross	891	302	6
Calvary	435	144	
Pine Bluff, So. Side	684	261	
Rye Hill	116	64	2
Springdale, 1st	478	167	
West Memphis, Calvary	220	146	6

Washington-Madison Deplores Profanity on TV, Screen

MEETING WITH 1st Church, Lincoln, messengers from the 28 churches of the Washington-Madison Baptist Association adopted the following resolution:

"We deplore the use of profanity heard in increasing volume on both television and in the movies. We express our extreme regret that this condition exists, and wish it to be publicized that we urge authorities over the medium of television and movies to lead in moral improvement."

Some 250 messengers heard reports and discussed plans for the work of the new year.

All of the constitutional officers were re-elected including: Burton A. Miley, 1st Church, Springdale, as moderator; Jamie Jones, Baptist student director, University of Arkansas, vice-moderator; Terrel Gordon, 1st Church, Lincoln, clerk, and Lloyd Alexander, Fayetteville, treasurer. Dr. Alexander Best, Fayetteville, is superintendent of missions for the association.

SECOND CHURCH, Little Rock, will be host to the associational Sunday School rally Nov. 2 at 7:30 p.m. Age group conferences are planned for every department. (CB)

DR. L. E. ROSS, DeWitt, has accepted the call of 1st Church, Stuttgart, as mission pastor at Aberdeen, effective Nov. 1. (CB)

DR. E. A. "HAPPY" Ingram has accepted the call of Gaines St. Church, Little Rock, as minister of missions. He currently is preaching at the 4th Street Mission, and will lead the church in establishment of additional mission work.

W. J. McDANIEL, head of Southern College's Music Department, has been employed by 1st Church, Walnut Ridge, as minister of music on a part-time basis. He holds a doctor of music degree from Peabody College, Nashville, Tenn. (DP)

SULPHUR SPRINGS Church, Harmony Association, was in revival Oct. 4-11 with pastor Paul Pearson bringing the messages and E. L. Spharler leading the singing. There were five professions of faith with four coming for baptism.

Baptist Pastor Heads Foundation

B. G. HICKEM, 1st Church, Crossett, has been elected chairman of the newly organized Ashley County Chapter of the Christian Civic Foundation of Arkansas.

The county chapter was organized Oct. 11 in 1st Methodist Church, Hamburg.

Other officers include: Gordon Hart- rick, Fountain Hill, vice chairman, and Mrs. Early Earl J. Scott, Hamburg, secretary-treasurer. (DP)



NEW OFFICERS of the Dardanelle-Russellville Association, elected recently at the annual association meeting at 1st Church, Atkins, left to right: Morris S. Roe, pastor, 1st Church, Dardanelle, moderator; Carl Kluck, pastor, 1st Church, Atkins, vice moderator; H. D. Morton, Russellville, treasurer; and William Woodson, missionary, clerk.

CALVARY SOUTHERN Baptist Church, Clear Creek Association, has included the Arkansas Baptist in its budget for next year. F. J. Dillard is pastor. Willie DeWitt is treasurer.

NORTHSIDE CHAPEL, El Dorado, has called Dale Floyd, a native of El Dorado, as pastor. He is a graduate of Ouachita and has attended Midwestern Seminary. Mrs. Floyd is the former Patricia Jerry of Strong. (CB)

BOONE AND NEWTON Association recent pastoral calls include: Hopewell, Perry Fitchue, full time, and Bear Creek Springs, James McBee, full time. (CB)

DUAINE HAAG and J. C. Turner were ordained as deacons by 1st Church, Jonesboro, Oct. 18. Pastor Homer Robertson and R. D. Harrington, Nettleton Church, questioned the candidates. The ordination prayer was by W. G. Smith, Fisher Street Church, and Curtis Mathis, Central Church, Jonesboro, preached the sermon.

A. V. SMITH Jr., Tennessee Church, Hope Association, was evangelist for Eastview Church, Texarkana, in a recent revival. There were six additions by baptism and five by letter. Raymond Phillips is pastor.

JOHN M. HARRISON, 1st Church, Nashville, has accepted the call of Immanuel Church, Pine Bluff. Prior to his Nashville service he was pastor of 1st Church, Waldo, for four years. He is a graduate of Ouachita and Southwestern Seminary. He is married to the former Pat Byars of Camden. (DP)

DR. ANDREW Hall, 1st Church, Fayetteville, has been named as one of the authors preparing material for a forthcoming issue of *Open Windows*, devotional magazine used by at least 350,000 persons daily.

GRACE CHURCH, Camden, has put the Arkansas Baptist in their budget. Doyle Creech is pastor.

Ralph Caldwell Leaving Shannon for Hoxie Post

RAPH M. CALDWELL, pastor of Shannon Church, Rte. 1, Pocahontas, for almost six years, has resigned effective Oct. 31 to assume the pastorate of 1st Church, Hoxie.

During his pastorate at Shannon he has also taught in several of the county's schools and served as principal of Dalton High School for two years. Currently he is vice moderator of the Current River Association and chairman of the Joint Missions Committee and the Radio Committee.

The church, organized in 1951 with 17 members, now has 230. It was selected by the State Convention as "The Rural Church of the Year" for 1955.

Erection of the present building was completed in 1958, and in June 1958 the church began supporting Mr. Caldwell full time. ■

The Silent Service?

GLORIETA, N. M. —(BP)— In a Sunday School class at Glorieta Baptist Assembly a teacher said, "You will note Job's friends stayed a week without speaking."

Voice from the back of the room: "Well, that proves they weren't women!"



Formosa's Christianity Surveyed

TAIPEI, Formosa (EP) — Since his recent resignation as Ambassador of China to the United States, Dr. Hollington K. Tong has begun research on a book describing the status of Christianity on Formosa. He is currently collecting material by interviewing and observing missionaries. Tong, a trained journalist and an experienced correspondent, was tutor of English to Chiang Kai-shek in 1906 before the famous Chinaman became President of his country.

When asked about his plans for the future since stepping down as Ambassador to the United States, Tong said, "I have been promoted to the Ambassadorship of heaven."

Tract Stirs Catholics

MANILA, Philippines (EP) — A Filipino Roman Catholic newspaper called "The Sentinel" has bitterly attacked Dr. Oswald J. Smith's pamphlet: "The Roman Catholic Bible Has The Answer."

"Act now!" the paper appealed to its readers in an article lambasting the tract. "Burn, destroy all anti-Catholic literature that comes your way." The article further stated: "The tract's 11-pages are murderously dripping with anti-Catholic venom. They sacrilegiously juggle Catholic Bible texts to ridicule and distort things most dear and sacred to Catholics. . . In view of Oswald J. Smith's performance, will the Baptist Bible Church now discontinue the distribution of his misleading (not to say diabolical) tract . . .?"

Official Languages at Rio

WASHINGTON, D. C., USA — (BWA) — Spanish has been added to Portuguese and English as an official language for the Baptist World Congress in Rio next year. Original arrangements had provided that English and Portuguese would be the official languages of the Congress and that translations would be made to these two languages. A request coming to the BWA Executive pointed out that Portuguese and Spanish are very much alike, and an address delivered originally in Spanish will not need to be translated into Portuguese.

Dulles' Daughter Licensed

NEW YORK (EP)—The Presbytery of New York has licensed a new preacher: Mrs. Lillias Hinshaw, daughter of the late John Foster Dulles.

The second of the former Secretary of State's children to study for the ministry, Mrs. Hinshaw is the mother of four. She is now engaged in pastoral duties at the Madison Avenue Presbyterian Church.

Her license permits her to perform all the usual functions of a minister except extending the sacraments of baptism and Holy Communion. If she should accept the pastorate, she then would be eligible for formal ordination.

Baptist Crosscurrents

Unregenerate Church Members

A SOUTHERN demagogue boasts that he can get in or out of a Baptist church.

The same politician is vulgar, profane, constantly takes the name of the Lord in vain, has lived a life of immorality openly for years; yet he was accepted and baptized into a Baptist church.

This is an extreme case, but it dramatizes a widespread fact: Baptist churches are accepting unregenerate people into their memberships. Who cannot name several people in the community who live like the devil, yet belong to a Baptist church?

Entry. What is responsible for this situation? Is it the way in which we receive members? The prevailing practice in the South is to accept anybody who comes on a simple profession of faith as soon as they present themselves. It is argued that this is the New Testament way. It is held to be inconsistent to extend the invitation and then not immediately accept whoever presents himself.

On many mission fields, however, a probationary period of several months is required before a new convert can become a member of the church and wear the Christian name. The reason there is obvious. Converts often come out of a pagan background or one in which Romanism has emptied the word "Christian" of its high significance. Do we not need to raise the requirement of church membership in this country where worldliness in the churches tends to erase the difference between church members and non-church members?

Some pastors and congregations in Maryland have reexamined and altered their practice of receiving members. University and Patterson Park in Baltimore and Middle River, for example, defer candidates for church membership until there has been opportunity for a pastoral conference or visit in the home.

Root. It may be that the root of the problem is not in how we receive members but in our preaching. Are our ministers failing to place the biblical emphasis on repentance as a requirement of salvation?

Peter told his hearers at Pentecost, "**Repent** and be baptized every one of you in the name of Jesus Christ for the remission of sins, and ye shall receive the gift of the Holy Ghost" (Acts 2:38). Repentance was the first requirement.

The more we Baptists become a mass movement in the South the more we need to be concerned about the holiness of our members.—Editor Gainer E. Bryan, in *The Maryland Baptist*

Are We Missionaries?

By S. H. Jones

IT HAS become a rather common saying that all Christians are (or are supposed to be) missionaries. We believe this to be true, and we believe that every Christian who does the will of the Lord is a missionary, whether he be engaged in what is ordinarily called missionary work or not.

We assume also that God calls people to various vocations and to various types of work just as He calls people to be foreign missionaries and ministers. All who receive and respond to such a call are, therefore, missionaries.

Having said this, we would express the fear that people may be missionaries only in theory or profession while failing to recognize and discharge the heavy obligations of such a sacred calling.

Missionaries are generally regarded as being people who are wholly dedicated to the Lord and engaged in unselfish and sacrificial service while living on the highest possible plane of moral and spiritual ideals. Many noble Christians undoubtedly do measure up to the highest standards. It is true, however, that some who are considered to be missionaries here at home are content with lower standards than they expect of foreign missionaries? Surely our Lord expects the best from all of us wherever we live; therefore, let us all be missionaries, in the fullest sense of the word.—*The Baptist Courier*, 9-3-49, p. 2.

This 'Dead Soldier' Got Special Burial

MINNEAPOLIS, Minn. — (BP) — What does a teetotaler father do when a well-meaning client gives him a bottle of liquor as a token of appreciation?

In most cases, no doubt, the last thing to be expected would be taking the liquor home to the wife and children. But that is what Judge McCall of Memphis, Tenn., father of Duke K. McCall, president of Southern Seminary, Louisville, and president also of the National Temperance League, did many years ago.

Those attending the meeting here of the executive committee of the National Temperance League heard President McCall tell the story of the gift liquor.

"Mother took the bottle of whisky and invited her five children, three sons and two daughters, into the backyard of our home for a burial ceremony.

"Since I was the oldest of the children, I had the privilege of digging the hole. When the hole was ready, we emptied the liquor into it and then buried the bottle," he related.

"Rather melodramatic, you may say, but it made quite an impression on all of us children—an impression we have not forgotten to this day."

So, a bottle of liquor emptied in a way not to poison anyone's body or befog his mind, being buried, yet speaks for total abstinence. ■



BROTHERHOOD ADVANCES—The course of the Brotherhood Commission during 1960 is charted by its officers after their selection during the annual meeting of the commissioners at Memphis. They are (sitting, from left) J. Hilliard Felton, Russellville, Alabama, secretary; R. L. Sherrick, Memphis, chairman; and (back row, from left) Playford Davis, Effingham, Illinois, vice chairman, and George W. Schroeder, Memphis, executive secretary-treasurer.—Brotherhood Commission Photo

Growing Interest in Alcohol Problem Seen

GROWING CHURCH interest in the problems of alcohol is made evident in the statements of various denominations compiled in the booklet, "Here We Stand," published by the Methodist Board of Temperance.

Twenty-five Protestant bodies representing nearly 35 million members were asked the following three questions:

1. What is your official position in regard to total abstinence?

2. What is your official position in regard to legislation prohibiting the advertising of alcoholic beverages in interstate commerce?

3. What is your official position in regard to legislation prohibiting the serving of alcoholic beverages on commercial airliners?

All 25 of the churches queried have given official recognition to some phase of the alcohol problem and all have men responsible for leadership in the field of alcohol education.

What did the questionnaire reveal? Nineteen church bodies representing 26,167,891 members either require total abstinence as a condition to membership or ask it as a voluntary decision. Fourteen churches representing 25,821,264 members have officially called a ban on interstate advertising of alcoholic beverages.

Thirteen churches representing 23,327,981 members have gone on record as approving legislation to prohibit the serving of alcoholic beverages on commercial airliners.

"Here We Stand" gives the official pronouncements of the 13 churches which have taken a position in regard to abstinence. A typical statement is that of the Disciples of Christ, which has over 1,800,000 members:

"Christians no longer can ignore the rapidly mounting number of alcoholics in the United States or the challenge of intemperance represented by the expenditures in alcoholic beverage advertising. Each succeeding generation of Americans appears to be influenced more and more by advertising slogans and less and less by Christian ethics in formulating attitudes toward alcoholic beverages.

"A strong program of education was the tradition among our churches in times past. We should recapture this tradition and carry on an alcohol education program through all concerned agencies and every possible medium. We urge a legislative program eliminating the sale of alcoholic beverages.

"Alcohol and public safety are always a concern in this age of motor and air travel. It is therefore gratifying to see

the House of Representatives of the United States acting to prohibit the sale and service of alcoholic beverages aboard airliners. We urge the Senate to do likewise.

"Congress failed to act, however, to prohibit alcoholic beverage advertising in interstate commerce on television, radio and in newspapers, magazines and other periodicals. We reaffirm our support of efforts to outlaw such advertising."—Dr. W. E. Brown, Director, Christian Civic Foundation. ■

A TOP Army communications expert has said if you want people to remember what you say, illustrate your talk. If you use audio only, listeners will recall 70 per cent of what you say in three hours, only 10 per cent in three days. If you use visuals only, viewers will recall 72 per cent in three hours, 20 per cent in three days. If you use audiovisual presentations, your audience will recall 85 per cent of the message in three hours, 65 per cent in three days.

Memphis Agency Names New Director of Art

MEMPHIS, Tenn. —(BP)— John C. Sullivan of Nashville, former artist for the Sunday School Board, has been named art director of the Baptist Brotherhood Commission here. Sullivan, 45, assumed his new duties Sept. 1.

1960 State Music Festivals Planned

- Here's the schedule of 1960 music festivals:
- Primary Choir, 1st Church, Benton, Mar. 12.
 - Junior Choir, 2nd Church, Hot Springs, Mar. 26.
 - Junior Choir, 2nd Church, Hot Springs, Apr. 2.
 - Adult Music Festival, Park Place, Hot Springs, Apr. 29.
 - Youth Music Festival, 2nd Church, Hot Springs, Apr. 30.

Festival Instructions

1. All choirs, ensembles, sextets, quartets, trios, duets and soloists may participate in state festivals. No district eliminations. No registration fee.
2. Festival selections should be purchased from the Baptist Book Store and rehearsed dutifully and painstakingly. Memorization is required on junior and primary festival music.
3. Vestments or robes are not required, but neatness and uniformity of choral groups will add to appearance.
4. Each choir and ensemble will sing one selection of their own choosing for adjudication. Primary choirs may sing two selections. All selections for adjudication should be memorized. Failure to memorize selection will reduce the rating one letter grade.
5. Adult and youth division: Soloists, duets, trios, and quartets will sing

one selection of their own choosing for adjudication. Selections must be memorized. Bring your own accompanist. One representative from each event will be chosen to sing on the festival program.

6. Festival selections may be secured by writing the Church Music Department, 312 Baptist Building, Little Rock, Ark.—LeRoy McClard, director. ■

THE OUACHITA College Theater has begun rehearsals for Phillip Barry's play "Hotel Universe," which will be shown in the Little Theater Nov. 5, 6, 7 at 8 p.m. Students featured in the cast are Johnny Ward, Ft. Smith; Betty Adney, North Little Rock; Carolyn Croft, Springdale; Sonny Setliff, Magnolia; Berdell Cahoon, Pine Bluff; Bonnie Atchison, Ft. Smith; Bill Khabe, Little Rock; Dan Dipert, Damascus; and Joe Downs, Texarkana. The play is directed by Dennis Holt.

Tokyo Church Dedicated

HOUSTON —(BP)— A group of Texas and Southern Baptist Convention leaders dedicated the first English-speaking Baptist church in Tokyo, Japan, Oct. 8. E. Hermond Westmoreland, pastor of the South Main Baptist Church

here, was principal speaker for the dedication service.

QUESTIONS and PROBLEMS



Having difficulty finding answers to the questions your Intermediates are continually asking?

Problems . . . both real and fanciful regularly face Intermediates, and you, as one of their leader, frequently have an opportunity to offer help and guidance

You can reinforce your teaching and counseling by having *Upward* available for them to take home. *Upward* is the weekly illustrated story paper that's designed especially for teen-agers.

Joyousness of abundant Christian living is the magazine's keynote, as carried out in the articles on problem-solving, interesting personalities, and finding God's will.

And *Upward's* weekly copies arrive in monthly batches, giving teachers and other workers a chance to scarf new issues in advance and prepare to use recommended articles to best advantage.

Expensive? Not at all. Thirteen weekly issues per quarter of this 24-page magazine (a total of 312 pages), cost only 36 cents . . . less than 3¢ per copy. Request your superintendent to add an order for *Upward* on next quarter's regular literature order form.

If you are not familiar with *Upward*, complete the coupon below and mail now for a sample copy and additional information about its features.

Send to:
LITERATURE PROMOTION
BAPTIST SUNDAY SCHOOL BOARD
 127 Ninth Avenue, North
 Nashville 3, Tennessee

2 B

Please send me a sample copy of *Upward* and further information about its features. I wish to consider it for our church.

Name _____
 Address _____
 City _____ State _____
 My Church Office _____

6% INTEREST PROVIDENCE CHURCH BONDS

Burchill Baptist Church, 2900 Burchill Rd., of Fort Worth 5, Tex., is one of the older, established Southern Baptist Churches in the Polytechnic Area of Ft. Worth, Tex. It offers to readers of the Arkansas Baptist \$25,000 of its \$100,000 issue of 6 percent First Mortgage, First Revenue Bonds in denominations of \$500 and \$1,000 with 6 percent interest retroactive to May 1! Interest coupons and bonds may be redeemed at any bank in the United States or Canada.

Write the Pastor, Rev. Raymond Marks at the above address for a free brochure and maturity schedule giving full details.

Brazil Offers Many Mission Opportunities

OPPORTUNITIES FOR mission work in Brazil are great—the doors are open for a wider range of service—Mrs. Alvin Hatton told some 150 women Thursday at the annual meeting of the Woman's Missionary union of Concord Baptist association at the 1st Church, Ft. Smith, Oct. 16.

Mrs. Hatton, a missionary to Rio de Janeiro, teaches music at the South Brazil Baptist seminary there. She described the different mission programs in operation, talked about the primitive conditions, and showed a collection of curios and other articles from the country.

In States on Furlough

Mrs. Hatton, a native of Dermott, Ark., taught school in the state prior to her assignment to the foreign mission field. She and her husband, the Baptist Royal Ambassador secretary to Brazil, and their four children, are in the states on furlough.

Newly installed officers were: Mrs. Roger England, president; Mrs. H. Wood, vice president; Mrs. H. A. Slack, mission study chairman; Mrs. Febro, prayer chairman; Mrs. Truman Witcher, community missions chairman; Mrs. Wilson Tucker Sr., stewardship chairman; Mrs. J. B. Steward, Young Women's auxiliary director; Mrs. R. E. Snow, Girls Auxiliary director; Mrs. Joe Davis, Sunbeam director; Mrs. Paul V. Berry, secretary-treasurer; Mrs. J. O. Kincannon, Third Jubilee chairman; and Mrs. Carl Beckerdite, reporter. (DP)

Christmas Gospel Reading Plan Pushed

"ON EARTH Peace" is the Christmas message the American Bible Society has selected this year to form a part of the attractive cover of the special printing of the Christmas story as it appears in the Gospels of Matthew and Luke.

Members of the Bible society, have been asked to urge every family in their church and community to read together the Christmas story at a given hour on Christmas Eve, when families are normally together. The American Bible Society has printed a special edition of 2,000,000 copies of the Christmas Gospel—1,250,000 copies in the King James Version and 750,000 copies in the Revised Standard Version.

The booklet, it is expected, will be widely used by Sunday School teachers for their pupils, youth groups and others who will distribute it to hospital patients, and business men who will present it to their associates and employees.

Ministers will cooperate in the program by distributing the Christmas Gospel to members of their congregations and their church schools asking that they read this book together on Christmas Eve.

This is the first time a concerted reading of the Christmas Gospel has



THE REV. Robert Chaplin, former RAF wartime pilot-bomber, delivers sermon to polio patients at nondenominational chapel of Georgia Warm Springs Foundation, famous as the rehabilitation center where Franklin D. Roosevelt was treated for polio paralysis. The Foundation gets support from New March of Dimes funds.

COUNSELOR'S CORNER

By DR. R. LOFTON HUDSON

Baptism and Salvation

QUESTION: Please explain Mark 16:16. Some of my friends believe this shows baptism is essential to salvation.



DR. HUDSON

If it can be explained in such a manner that I would be able to tell them, I would appreciate it.

ANSWER: "He that believeth and is baptized shall be saved; but he that believeth not shall be damned." This is the scripture to which you refer.

In the first place, verse 9 to 20 of Mark are not in the oldest and best of the manuscripts. Consult any good commentary on this. This means that almost certainly Mark did not write these words and they do not belong in the Bible.

In the second place, the verse itself shows that baptism is not essential to salvation. Otherwise it would have read, "he that believeth not and is not baptized shall be damned."

Third, if baptism is essential to salvation, I can find you 100 verses in the Bible which are outright lies, including John 3:16 and Acts 16:31.

Therefore, the only sensible interpretation of the Bible is to go by the majority of positive statements. Mark 16:16 does not say that you have to be baptized in order to be saved. It

been planned by the American Bible Society. ■

places baptism close to conversion, not as a part of it. Baptism should follow belief in the risen, saving Christ.

Those who believe that baptism saves deny the saviorhood of Christ.

(Address all questions to Dr. Hudson, 116 West 47th Street, Kansas City 12, Mo.)

New Mission Field Opened in Africa

BLANTYRE, Nyassaland — The Baptist Mission of Central Africa has ordered two missionary couples now serving in Southern Rhodesia to come here to prepare for the opening of Baptist work.

They are Rev. and Mrs. William W. Wester and Rev. and Mrs. LeRoy Albright. This newest mission field brings to 40 the number of countries and territories in which Southern Baptist missionaries serve. (DP)

NATHAN C. BROOKS, Jr., president of Carver School of Missions and Social Work, Louisville, Ky., has announced appointment of Miss Hilda Arnold, of Drakesboro, Ky., an assistant librarian with the faculty rank of associate professor. Miss Arnold holds the M. S. degree in Library Science from the University of Kentucky.

She has had several years of experience as a professional librarian. In her new capacities, she will assist with the moving of Carver School library into its new co-operative operation with the Southern Baptist Theological Seminary in the James P. Boyce Centennial Library. Carver School will operate the second floor of this building in the new venture.

Miss Arnold is expected to assume her new duties in December.

THE BOOKSHELF

The Dead Sea Scrolls, by Charles F. Pfeiffer, Baker Book House, 1957, \$2.50.

The author, professor of Old Testament Language at Moody Bible Institute, gives a detailed and scholarly appraisal of the sensational Dead Sea Scrolls.

Light in the Dark Valleys, by Hugh R. Horne, Eerdmans, 1958, \$2.

That the divine sentence that there would be death and sorrow for fallen man has never been revoked, but God himself opens a way for man to escape from eternal death is the theme of the author, who is pastor of Calvary Baptist Church, Sulphur, Okla.

Talks for Children on Christian Ideas, thirty story sermons by Julius Fischbach, Abingdon Press, 1959, \$2.25.

In entertaining talks, the author skillfully translates abstract ideas, such as love, kindness, and obedience, into simple and concrete images a child can easily understand.

When You Lose a Loved One, by Charles L. Allen, Fleming H. Revell Co., 1959, \$1.50.

The Easter message, Dr. Allen declares, robs death of its terror and promises a solution to life's mysteries; why did that baby die, or that young husband get killed, or any of the great disappointments of life have to be?

Enjoy Your Children, by Lucille E. Hein, Abingdon Press, 1959, \$3.50.

In presenting a book full of recreation and activity ideas for children seven to 12 years of age, the author declares children are "an opportunity and not a problem!" Here are multitudes of answers to the inevitable cry of all children: "What can I do now?"

The Pastor in Profile, by Adolph Bedsole, Baker Book House, 1958, \$2.95.

The author sets himself to the task of providing practical, down-to-earth advice for preachers—young, old, and middle-aged. Among other things, he deals with such earthly problems of the preacher as leisure time (if he has any), bank account, politics, etc. ■

THE BASIS OF MORALITY

by

H. D. MORTON, B.A., M.A., Th.M.

STIMULATING - CHALLENGING

A book for today dealing with our moral problems.

Written to provoke thought and action to combat the rising tide of delinquency and rapidly increasing criminality. (9.3 per cent in U. S. in 1958).

As a Christian citizen are you concerned?

\$1.25 postpaid.

Order from H. D. Morton, 408 South Denver, Russellville, Arkansas, or Baptist Book Store.

Daily Bible Readings

Oct. 29—Deeds, Not Words (James 2:14-24).

Oct. 30—Fellowship in Worship (Heb. 10:19-25).

Oct. 31—Fellowship in Giving (2 Cor. 8:1-9).

Nov. 1—Love Is of God (1 John 4:12-21).

Nov. 2—Suppression by the Sadducees (Acts 5:17-24).

Nov. 3—Obeying God (Acts 5:25-32).

Nov. 4—Wise Counsel (Acts 5:33-42).

THE BAPTIST Student Union Choir, newly-organized at Ouachita Baptist College with 110 members, will make its first major appearance at the State BSU Convention in Hot Springs, Nov. 13-15.

The choir, under the direction of Teddy Stanton, is mapping plans to make other appearances. Lillie McKnight and Ron Kelly are the accompanists for the group. Dr. and Mrs. Horace Nelson and Mrs. Vivian Morrow are the sponsors.

Target Date Set For New Service

NASHVILLE —BP) — A target-date of early 1960 has been set for establishing a teletypewriter network linking Baptist agencies, newspapers, and state offices in the Southern Baptist Convention.

The Southern Baptist Executive Committee adopted a report of its public relations subcommittee recommending the goal for starting the communications service.

Convention agencies and offices were urged to give "careful consideration" to taking part in the network on a contracted six-month experimental period.

The public relations group said benefits of the teletypewriter network would include:

"Immediate transmission of news and promotional information on a convention-wide level.

"Expedited communications between individuals and organizations contributing to unified plans and objectives.

"Rapid dissemination of requested and generally reported statistics.

"A renewed and accelerated interest in sharing information and program developments.

"Potential saving in types of high cost communications and coordination of information services."

The Executive Committee also "strongly encouraged" all Southern Baptist Convention agencies to use Baptist Press news service "to the fullest extent, thus correlating and coordinating the distribution of news of Convention-wide interest." ■

Vivid Description

A CAR MANUFACTURER advertised that he could put a car together in seven minutes. The next day he got a phone call asking if that was true.

"Of course," he said. "Why?"

"Oh nothing much," said the voice on the phone. "I think I have that car."

BAPTIST WORLD CONGRESS

Rio De Janeiro, Brazil

June 26-July 3, 1960

Join an Official Mission Tour
"Around South America"

under the personal leadership of

REV. O. L. BAYLESS

Pastor, Second Baptist Church
Hot Springs, Arkansas

24-Days

7 Countries — \$1,139

also "Go Now and Pay Later Plan"

"Go with an Arkansas Group"

Make your Reservations NOW!

Call or Write for folder—

NATIONAL TRAVEL SERVICE

238 Central Ave. — Ph. NA 3-6622

HOT SPRINGS, ARKANSAS

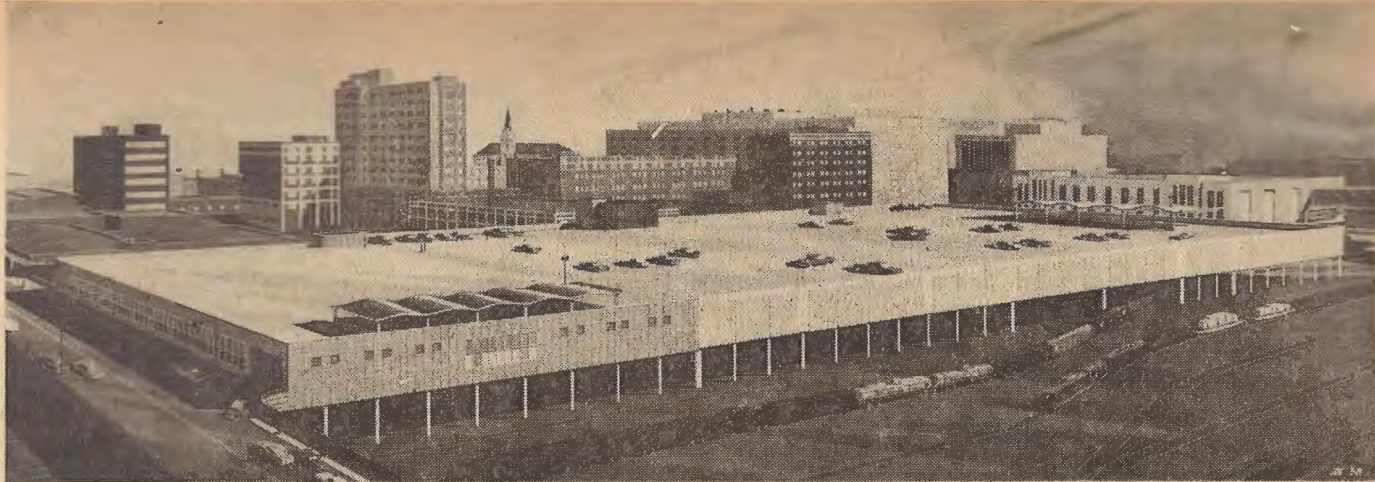
LET'S SING ABOUT EASTER

a New Broadman recording
for children 5-8

Mabel Warkentin tells the wonderful story of Easter in word and song. The music is arranged and conducted by Dick Reynolds, with an instrumental ensemble. Children will love this new record they can play themselves. 10-inch, 78 rpm. (26b) **\$1.25**



Order from your
BAPTIST BOOK STORE



THE OPERATIONS Building of the Sunday School Board, Nashville, has over 309,000 square feet of space. The new structure, extending 880 feet in length, has a width of 238 feet and extends over the railroad tracks in front of Nashville's Union Terminal. There is parking on the roof for 353 employees' cars. The building has been designed for an ultimate structure of five stories in the warehouse area and a twelve-story office building at one end. A new Baptist Book Store building is now under construction at the other end.

GREEN COUNTY Baptist Association Executive Board has gone on record as commending Owen Ring to Arkansas churches and the faculty at Ouachita College. Mr. Ring, who served for a number of years at Clarks Chapel Church and at Deleplaine Church for some time, resigned the Clarks Chapel Church to enter Ouachita to better prepare himself for the ministry. The commendation read in part: "He was one of our very best pastors. He was cooperative, loyal to the church and to the program of both the association and the state convention."

Southeastern Reports Enrollment Increase

WAKE FOREST, N. C. —(BP)— A total of 722 students have completed registration at Southeastern Seminary for the fall, according to Dean O. T. Binkley. Total registration is expected to go beyond 735.

This will mark the ninth straight year that Southeastern has shown a substantial increase in enrollment. The biggest increase in enrollment came this year in the women's division. Every dormitory room has been filled and several girls have found rooms in private homes.

According to President S. L. Stealey, a new dormitory for girls is a "must."

Alcoholics in Mental Hospitals on Increase

SAN ANTONIO, Tex. (EP) — The number of alcoholics in the mental hospitals and psychiatric wards of the U. S. swelled at the alarming rate of nearly 10,000 a year. So leaders of the National Woman's Christian Temperance Union were told by a speaker at their annual convention here.

Mrs. L. G. Rowley of Waterford, Mich., Vice President at Large of the WCTU, referred to the latest tabulations of the National Institute of Mental Health. According to these figures, she said, more than 56,000 alcoholics were committed to 432 state, county, private and psychopathic hospitals or passed through the psychiatric wards of 410 general hospitals in 1956—the last year for which complete statistics are available. This compares with a total of 46,000 for the year before.

Mrs. Rowley maintained that these figures revealed "the unsoundness of any idea or ideology that 'moderation in drinking' is the solution to the alcohol problem, since each of the 56,000 persons committed obviously started out with no idea of other than moderate or social drinking."

Broadmoor Church Voted Out of Association

Broadmoor Church, Little Rock, was almost unanimously, with a vote of 350 to 3, voted out by the Pulaski County Association at its annual meeting October 19-20 at Tabernacle Church, Little Rock. The statement calling for the action against seating messengers from the Broadmoor Church made the case clear: "The Constitution (of the Association) states . . . that the purpose of this Association shall be to awaken and stimulate among the churches of the Association the greatest possible activity in evangelism, Christian education, missions and benevolences—to cultivate closer cooperation among the churches . . . It further states . . . that 'this Association shall be composed of messengers from regular cooperative churches which are in sympathy with the principles and purposes of the constitution and desire to cooperate with the Association.'

"Using reports compiled by the Broadmoor Church, there seems to . . . be ample evidence that she does not desire to cooperate with the Association. There has been no attempt made (by the Church) during the past 12 months to give money or personal support to the Association . . ."

Another action of the Association was to vote in four new churches: University, Barnett Memorial, Bethel, and Green Memorial all of Little Rock.

Association officers for the coming year are Moderator, R. H. Dorris; Vice Moderator, Richard Perkins; Clerk, Mrs. Betty O'Pry; Treasurer, W. Dawson King.

TIGERVILLE, S. C. —(BP)— Dr. S. H. Jones, editor of **The Baptist Courier**, South Carolina weekly, in his convocation address at North Greenville Junior College here urged students to cultivate a sense of responsibility.

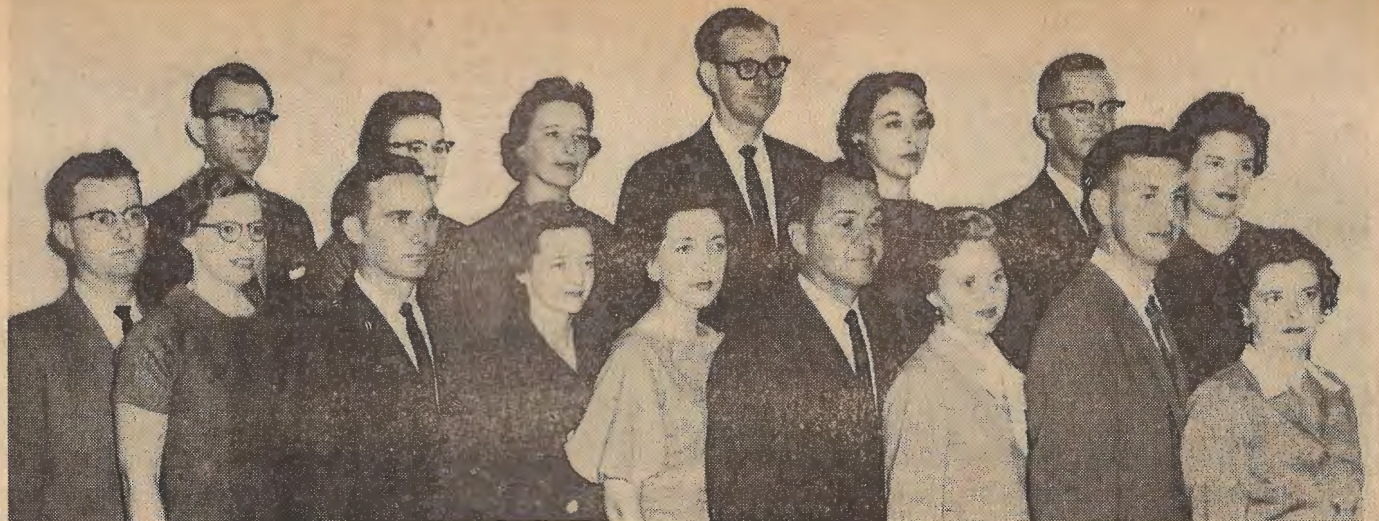
He suggested that the students work at and stay with the task of getting an education. "That is the purpose of college," he added.



Accepts Call To Grace Church

FRED DEAHL, 1st Church, Newcastle, Tex., has accepted the call of the Grace Church, North Little Rock, effective Nov. 1.

Mr. Deahl was born in Indiana, but has lived in Texas and Arkansas for most of his adult life. He is married to the former Georganna MacQueen. They have a married son and daughter, a daughter who is living in college and a mission volunteer, and two daughters and a son at home. The Deahls plan to move to Little Rock Oct. 29, and he will begin his service the following Sunday.



NEW MISSIONARY: At its annual full meeting in Richmond, Va., in October, the Southern Baptist Foreign Mission Board appointed 16 new missionaries, bringing the total number of active missionaries under appointment to 1,361. The new missionaries are (first row, left to right): Bobby E. Adams and LaVerne James Adams, both natives of Oklahoma, appointed for Chile; Herbert W. Barker and Emma Jean Archer Barker, both of Missouri, for Taiwan (Formosa); Dorothy Latham, Mississippi, for Equatorial Brazil; William T. Roberson and Audrey Hanes Roberson, both of North Carolina, for Vietnam; and Ralph L. Rummage, Oklahoma, and Laverne Russell Rummage, Texas, for Central Africa. Also (second row), Maurice Smith and Evelyn Rickman Smith, both of Texas, for Ghana; Evelyn Stone, Georgia, for Ghana; Charles A. Tope and LaVerne Warnecke Tope, both of Missouri, for East Africa; and Ernest C. Wilson, Jr., and Billie Haynie Wilson, both of Texas, for South Brazil.

They Answered God's Call

By Carol L. Hunt

"FORWARD THROUGH the ages, in unbroken line, move the faithful spirits at the call divine," sang 6,000 Baptists and others at the beginning of the appointment service for 16 young missionaries at the opening session of the October meeting of the Foreign Mission Board.

Those requesting appointment told of their divine call—of the influences that made them seek God's purpose in their lives, the impressions that made Christian missions a live issue to them, the impulses to go which they could not deny.

Most of the 16 come from Christian backgrounds, several are the children of Baptist deacons, many felt as teenagers that God had a special task for them to fulfill—yet the majority only recently decided to dedicate their lives to the proclamation of the gospel in other lands. All the men are ministers.

Although one of the men contacted the Foreign Mission Board concerning appointment nearly 15 years ago, two couples made their first contacts in January, this year. Lifetime experiences—in church and missionary organizations, in colleges and seminaries, the influence of friends who have gone out as missionaries, the accumulated force of all they ever read about missions, and the imperative which they found in their Bibles—were brought into focus somehow, somewhere, until they had to stop and think through this matter of missions and their relationship to it.

Bob Adams began to preach when he was a college student; but 10 years passed before a friend, who was a candidate for missionary appointment,

quite unintentionally brought home to Bob and his wife the possibility of missionary service for them.

Now, 10 months later, they are ready to leave a two-year pastorate in Old Hickory, Tenn., and take their three daughters—the eldest not yet five—to Chile, where they plan to work among university students.

Charles Tope, who with his wife was appointed for East Africa, said that for him the question of mission service arose from "the midst of a happy, busy pastorate," in Belton, Tex. "I preached myself under conviction," he said. "I came to believe what I preached."

Final decision for the Topes came during the foreign missions program at the meeting of the Southern Baptist Convention in 1958. "We looked at each other," Mrs. Tope recalled, "and said, almost as one voice, 'We must offer ourselves.'" The Topes have two girls and a boy.

A furloughing missionary helped Ernest and Billie Wilson to make their decision when he asked Mrs. Wilson, "When are you coming to Brazil?"

"He did not realize that we had considered mission service for some time," Mrs. Wilson said. "After that, I read every book on Brazil that I could get from our church library. Before long, I realized I could not stay at home."

So, instead of settling down in their pastorate in Wheatley, Ky., the Wilsons and their two boys will be entering a world of passports, immunizations, and language study as they prepare to join their missionary friend in South Brazil.

Emma Jean Barker said she and her husband Herb thought "the Lord would have called us before now if he wanted us to go overseas." Still, when Herb

left their home in Rochester, Texas., last January to attend a missions conference in Dallas, she thought, "What if the Lord should call him to be a missionary; would I be willing to go? "When he returned, I could tell by the look on his face that he had made some decision," she said.

Mr. Barker explained that at the conference he saw the needs of the world in a new light and as a personal responsibility. "God gave me a burden for the lost peoples of Asia," he said. "I was humbled and broken in spirit until I prayed that he would take and use me." He and Mrs. Barker both proved willing to go, and will be taking their young son to Taiwan (Formosa).

"Seek, and ye shall find." Searching for God's will for her life, Dorothy Latham, a schoolteacher from Mississippi, accepted a summer position in Arizona under the Home Mission Board. There she heard the story of a Brazilian who, upon hearing the story of Christ for the first time, demanded, "If this is true, why didn't somebody tell me before?"

"This story stirred my heart," she said. "I felt strongly that there were people just waiting for me to come and tell them of Christ—if I did not, they would die without knowing about him." The result of this experience? She goes to Equatorial Brazil, to work in a good will center.

At Ridgecrest—not too far from their church in Shelby, N. C.—during the Foreign Missions Conference in 1958, Bill and Audrey Roberson found their deep concern for missions brought to a climax by the appeal of missionaries to the Orient.

"Feeling myself to be a missionary, by what I was doing in my own land, I

(Continued on page 15)

Foreign Mission Board's '60 Budget

By Baker J. Cauthen

THERE LIES on my desk the 1960 operating budget of the Foreign Mission Board which totals \$11,398,893.87.

This budget provides for the support of more than 1,360 missionaries in 40 countries and the work of evangelism, church development, Christian education, theological seminaries, publishing houses, hospitals, clinics, good will centers, and many other ministries in which they are engaged.

Recommendations from the field are then examined by the mission organizations. It is necessary to delete many items and reduce many of the amounts requested in order to bring the recommendations within a figure that may be considered.

After the missions have studied their needs they vote to request from the Foreign Mission Board the amounts of money upon which they have agreed.

When the mission recommendations arrive at the Foreign Mission Board they are given further administrative study in light of resources available. Because of insufficient funds it was necessary to eliminate from the 1960 budget requested items for current operations totaling \$651,312. Even with these deletions the 1960 budget is \$1,086,825.97 larger than the budget for 1959.

The budget for current operations is only part of the responsibility the Foreign Mission Board faces in financing mission work abroad. We have before us recommendations for capital funds for 1960 totaling \$7,573,990. These capital funds are used to provide buildings for churches, schools, hospitals, and mission residences and to meet many other needs.

The importance of these capital funds can hardly be overstated. The progress of the work is greatly advanced when it is possible to provide essential buildings. It is, on the other hand, a heartbreaking experience to cross the world as a missionary and then have to wait for years for even the barest facilities. One missionary expressed it, "I found myself in the batter's box but had no bat."

If you will add to \$11,398,893, the amount required for the budget for current operations, the \$651,312 which could not be included and the \$7,573,990 requested for capital purposes, you will see that we are confronted with needs for 1960 totaling \$19,624,195.

This, however, is not the end of the matter. Every month brings to the Foreign Mission Board additional needs which must be considered. Emergencies occur which could not be anticipated when field budgets were being studied. Crises come in the lives of missionaries far beyond their personal resources.

It is conservative to say that throughout 1960 the Foreign Mission

Board will be confronted with recommendations from the missions for financial needs well in excess of \$20,000,000.

The total income of the Foreign Mission Board last year from all sources was \$15,549,177.20. The total income which can be anticipated for 1960 from all sources will leave at least \$3,000,000 of needs unmet.

The basic policy of the Foreign Mission Board is to send those missionaries whom God has called and who have prepared themselves to go. This takes approximately one third of the money spent annually by the Foreign Mission Board. We feel that the sending of missionaries is our first responsibility under the Great Commission. We then go as far as we can in filling the financial requests which are recommended by the missions for programs of work and capital purposes.

From what sources will the money come to supply this great amount of need? The lifeline of the foreign mission undertaking is the Cooperative Program. The budget for current operations of the Foreign Mission Board is built upon the support provided by the Cooperative Program.

Look for a moment at the budget for current operations for 1960, amounting to \$11,398,893.87. Of this amount, \$6,290,000 will be provided by the Cooperative Program budget. In addition, \$1,000,000 will be provided by the advance section of the Cooperative Program for 1959. The advance section of the Cooperative Program is funds received beyond the Convention budget. The Foreign Mission Board gets 75 per cent of this money. Every Baptist who gives liberally through the Cooperative Program has the joy of knowing he makes possible the basic operation of the foreign mission enterprise.

The sum of \$2,500,000 of the 1960 operating budget of the Foreign Mission Board is provided from the Lottie Moon Christmas Offering.

When we look at the \$7,573,990 requested by the missions for capital needs, we ask, "Where will money be found to meet any of this great sum?"

The Cooperative Program for 1960 will provide \$800,000 for capital needs. In addition, whatever funds are received from the advance section of the Cooperative Program in 1959 beyond \$1,000,000 will be used to provide some of the requests for current operations that could not be included in the budget and some of the capital needs.

It is from the Lottie Moon Christmas Offering that many of the capital requests are provided. Last year \$6,700,000 was given through the Lottie Moon Offering. If this year's offering exceeds last year's it will make available, after applying \$2,500,000 on the operating budget, \$4,200,000 for buildings, schools, hospitals, churches, and mission residences. ■



Picture Brought Conviction
—brought missionary decision.

They Answered—

(Continued from page 14)

volunteered to be of service to my Master wherever he would lead," Mr. Roberson said. Plenty of opportunity for service awaits when the Robersons and their three children arrive in Vietnam, where there is only one other Southern Baptist missionary couple.

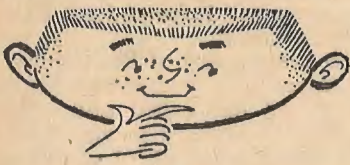
"Many people have influenced my life," said Maurice Smith, giving credit to his Christian family, teachers, pastors, and the people whom he has served as pastor. It was in 1958, he said, that he realized he was one of the trained people who could be of immediate value on the mission field. Last Thanksgiving Day, he and his wife talked about the matter and were gradually convinced that they should go to Africa. Ghana is the field they have chosen. They have two young sons.

For Evelyn Stone, an educational director in Atlanta, Ga., there was no special moment of illumination concerning God's purpose. "My call has been a gradual unfolding — each position I have held seemed to prepare me for other avenues of service," she said. "Now I feel that the greatest joys lie ahead, as new opportunities are opened for me in Ghana."

And Laverne Rummage, who, like her husband Ralph, has been a mission volunteer since college days, testified, "God has showed the way, step by step." Through a cover picture on The Commission, of an African ministerial student, suitcase on head and Bible under arm, God told them where to serve. Now, with experience gathered in pastorates in California and Oklahoma, the Rummages and their three children are ready to go to Central Africa.

OVERHEARD in a Memphis restaurant the other day from a young man to the waiter: "Four boiled eggs and a cracker to go. My girl's on a diet."—ELM

**IT'S FUN
to be
INFLUENCED!**



At least it is for Juniors who receive *THE SENTINEL*, the weekly story paper that entertains as it encourages abundant living and Christ-like character.

This 8-page illustrated paper contains wholesome and vigorous stories of mystery, adventure, and Christian achievement, all written in a style that appeals to Juniors and holds their interest.

Other features, such as devotional thoughts, suggestions for self-improvement, and inspirational poems, help build a firm foundation for the coming uncertain years of adolescence.

The cost of providing *The Sentinel* for Junior boys and girls in your church is only 25 cents per quarter for each pupil . . . thirteen weekly issues for less than 2¢ per copy. Ask your superintendent to include an order for *The Sentinel* on next quarter's regular literature order form.

Fill out the coupon below and return it for a sample copy of *The Sentinel* and other information about its contents. Mail to:

**LITERATURE PROMOTION
BAPTIST SUNDAY SCHOOL BOARD**
127 Ninth Avenue, North
Nashville 3, Tennessee

2 A

Please send me a sample copy of *The Sentinel* and other information about its contents. I wish to consider it for our church.

Name _____

Address _____

City _____ State _____

My Church Office _____

Sunday School

**State Conference
Marks Milestone**

THE STATE Sunday School Conference in Little Rock, Oct. 12-13, was a unique experience in many ways.

This conference formally marked the close of a wonderful 22 year ministry of Dr. Edgar Williamson as state Sunday School secretary. It also marked the beginning of our work with you as secretary of the department. Dr. Williamson will remain on in an advisory capacity during 1959. He will then be available to associations and churches in Arkansas and throughout the Southern Baptist Convention. Use him regularly for enlargement campaigns, church counseling, Bible conferences, clinics, conventions, assemblies and pulpit supply.

Having practically all of the staff of the Sunday School Department from Nashville, present for the conference was unusual also. Present for the conferences were Dr. A. V. Washburn, secretary of the department; other staff members included Sibley C. Burnett, William Cox, Robert Dowdy, Mrs. Douglas Hills, James V. Lackey, Mrs. Will McCraw, Keener Pharr, Mrs. Lillian Moore Rice, Mrs. Ada Rutledge, John Sisemore, Roger Skelton, and Helen Young, all of Nashville. From other departments of the board were Jacquelyn Anderson and E. Stanley Williamson.

Outstanding in the events of the day conferences were four special meetings around banquet tables. There were two such meetings for religious educational workers featuring better administration, one meeting for district and associational superintendents and missionaries featuring "distinctives of the Sunday School," and one outstanding Standards and Training Recognition Banquet.

Significant also is the fact that this October marks the beginning of the Church Study Course for Teaching and Training.

As we look forward in this year of teaching and training of the Baptist Jubilee Advance, we have a full calendar of activities and work before us.

During the second quarter, January, February and March, there are four major Sunday school events needing early attention of Sunday school leaders. They are:

- January Bible Study Week, Jan. 4-8
- State Vacation Bible School Clinic, Feb. 11-12
- Sunday School Group Training Schools, Feb. 22-26
- Nation-wide Sunday School Convention, Ft. Worth, Texas, Mar. 29-31.—Lawson Hatfield, Sunday School secretary. ■

Mamma No's Best

TWO-YEAR-OLD: "The cow says Moo-Moo, the dog says Bow-Bow, the duck says Quack-Quack, and—Mommie says No! No!"

WMU

**SBC Leaders
Coming for Meet**

MRS. ROBERT Fling of Oklahoma, recording secretary of Woman's Missionary Union, SBC, and outstanding mission study teacher, will present methods of teaching adults at the simultaneous WMU Mission Study Institute and Community Missions Clinic Nov. 12 at the Baptist Tabernacle, 10th and Pine, Little Rock. Leading the WMS-YWA conference on community missions will be Mrs. Jack Smith of Dallas, Texas, a successful crusader in literacy for adults.

Featured speaker at the general assembly and resource person in classes featuring the teaching of Home Missions will be Miss Irene Chambers, field representative of the Home Mission Board.

Teaching plans featuring the 1960 Home Mission series will be presented by the following: WMS, Mrs. Fling; YWA, Mrs. Philip May, Joyce City; Intermediate GA, Miss Mary Hutson, Little Rock; Junior GA, Mrs. Alexander Best, Fayetteville; Sunbeam Band, Mrs. Joe Davis, Ft. Smith. Conferences on community missions will be led by Mrs. Floyd Chronister, Little Rock, for GA leaders, and Mrs. Jack Waters, Stephens, for Sunbeam Band leaders. Mrs. Smith will have WMS and YWA representatives in the group led by her.

This simultaneous emphasis is one of the leadership training opportunities being offered by Woman's Missionary Union of Arkansas during this year of Jubilee Advance. Attendance is limited to a selected team from each association who are to lead in similar conferences for local leaders.

It's Report Time!

All WMU organizations are requested to forward to the State WMU Office copy of Record for Advancement for 1958-59. It is on the basis of those reports that recognitions of attainment on Aims for Advancement are made.

Also copy of the annual report of the WMS-WMU and the WMU Mission Study Achievement Chart should be sent to the state office.—Nancy Cooper, WMU secretary.

**Ohio Readers Given
Preview of 1960 Paper**

COLUMBUS, O. —(BP)— Readers of the Ohio Baptist Messenger will get a preview of the 1960 model of their Baptist state paper.

Editor R. G. Puckett here announced that the Oct. 15 issue contains 16 pages, an increase over its previous size. The twice-monthly publication of the State Convention of Baptists in Ohio will have 16 pages all the time, effective in January.

Presently, the editor doubles as secretary of Baptist student work in Ohio convention. One of the future hopes of the convention is to have a full-time editor.

Beacon Lights of Baptist History

By BERNES K. SELPH, Th.D.
Pastor, 1st Baptist Church, Benton

THE OLDEST UNIT of the Baptist denominational life is the association. As early as 1651, Particular Baptists in England and Wales had begun to hold associational meetings for the furtherance of brotherhood and missionary endeavors.



DR. SELPH

Feeling the need of a guiding hand in the Western Association (made up of Somerset, Wilts, Gloucester and Dorset counties; Thomas Collier was appointed and ordained in 1665 to the office of "General Superintendent and Messenger to all the Associated Churches."

For ten years, preceding this date, Collier had been active as a superintendent and director of the work of a number of evangelists.

These Baptists felt that the utilization of the churches in the missionary effort was as important as the independence of the local church. In fact, they seemed to believe that churches could work together and maintain their self-governing rights.

The confession of faith, set forth by the Association in 1665, breathes the missionary spirit: "It is the duty of his church, in his authority to send forth such brethren as are fitly gifted and qualified through the spirit of Christ to preach the gospel to the world."

Sure Sign

"THIS CAR is the opportunity of a lifetime," remarked the enterprising salesman.

"Yes," replied the prospective buyer, "I can hear it knocking."

CHURCH PEWS



At
A
Price

Any Church Can Afford

Write or Call

WAGONER BROTHERS
MANUFACTURING CO.

Phone 246

BOONEVILLE, ARKANSAS

Race Relations

Department Personnel

AT THE REQUEST of Dr. Brown, head of the Negro Tuberculosis Hospital at Alexander, we employed Rev. Arlis Sims as part-time Chaplain. Mr. Sims has a good program of bed-side ministry, devotional services, and a Baptist Sunday School throughout this 367-bed hospital. Pulaski County Baptist Association buys the Sunday School literature. Mr. Sims reports to the Department director. We provide film strips and other material.

Mrs. Lou Alice Watson, office secretary, handles correspondence, gets out a great amount of mimeograph materials for all phases of the Department program, prepares copy for programs, tracts, and handles details in absence of Department director.

Rev. M. W. Williams is a part-time assistant to the Department director employed under the Teacher-Missionary program of the Home Mission Board. Rev. Williams is a seminary graduate, and for seven years was dean and Bible teacher at Arkansas Baptist College. He teaches an extension class in Little Rock and assists the Department director in planning, promoting, and conducting leadership conferences, institutes, clinics, and serves as pastor and camp director for the Negro Boys and Girls Camps. He has the respect and confidence of both Negro and white Baptists. He is paid by the Home Mission Board.

Rev. Arlis Sims was already doing some work at the Tuberculosis Hospital on Sundays when we were requested by the superintendent of the hospital to make it possible for him to spend at least two days a week out there.

He is paid \$50 per month by our Department. He has the love and confidence of the hospital staff and patients.

We have been informed by the Home Mission Board that the work of Rev. S. M. Taylor will be placed under the Department director's supervision beginning January, 1960. Mr. Taylor has for many years been employed by the Home Mission Board as teacher-missionary at Morris-Booker College, Dermott, Ark.—Clyde Hart, Director.

College Professors Get \$600 Raise

BOILING SPRINGS, N. C. —(BP)—Teachers at Gardner-Webb College here will receive a raise of \$600 for the coming school year, according to action by the trustees.

The across-the-board raise is given to all administrative personnel and all teachers with the master's degree or higher.

The salary raise boosts top pay to \$5,600 annually for a professor, \$5,100 for an associate professor, and \$4,800 for assistant professor, with special instructors earning up to \$3,300.

Maids want nothing but husbands, and when they have them, they want everything.—Shakespeare

YOUTH

DESERVES

THE VERY BEST



... and in reading material for Primaries and Beginners, this means **STORYTIME**, the illustrated weekly paper designed especially for 4-8 year olds.

Storytime's contents include:

- Simple songs
- Poems
- Short Stories
- Plans for things to do or make
- Puzzles
- Cartoons

Primaries and Beginners love to read and to listen, too. The older child can easily read *Storytime's* enjoyable tales, and he and the very young child will delight in listening to the stories that interpret lessons such as kindness, reverence, and fair play.

Each four-page paper is colorfully illustrated, and comes to your Primaries and Beginners for only 17 cents per quarter, thirteen weekly issues. Request your superintendent to order *Storytime* on the regular literature order for next quarter.

Fill out the coupon below and mail today for a sample copy of *Storytime* and further information about its features. Mail to:

LITERATURE PROMOTION
BAPTIST SUNDAY SCHOOL BOARD
127 Ninth Avenue, North
Nashville 3, Tennessee

2 A

Please send me a sample copy of *Storytime* and further information about its features. I wish to consider it for our church.

Name _____

Address _____

City _____ State _____

My Church Office _____



God's Wondrous World

Witches' Sabbath

By Thelma C. Carter

IN OCTOBER, when the daytime air is hazy and the dark nights come early, we think of Halloween, with witches, black cats, pumpkins, and jack-o'-lanterns.

Many people think that Halloween is an American custom, but this is not true. The Halloween celebration really came to our country from Europe. It started long ago as a part of a special ceremony called "Witches' Sabbath," which was held four times a year.

It was thought by some people that magic and witchcraft were performed during these particular days. People gathered together to hold strange midnight meetings. Witches with their companions, black cats, toads, and serpents, were supposed to perform their magic tricks.

There were many strange beliefs concerning the witches themselves. One was that a witch could shed only three

Hobgoblin Dessert

By Erma Reynolds

HOW ABOUT making a special treat for Halloween — a hobgoblin dessert?

In the bottom of individual dessert dishes, place a peach half, rounded side up. Insert seedless raisins in each peach to make a hobgoblin face. Stick a narrow strip of green pepper into the top of the fruit for a stem.

Prepare orange gelatin according to the directions on the package. When the gelatin is thoroughly dissolved, pour it carefully over each peach, using enough liquid to completely cover the fruit. Allow the gelatin to set. When you serve the dessert, have whipped cream in a separate dish to be used as a topping.

(Sunday School Board Syndicate, all rights reserved)

tears from the left eye. Another was that no witch could cross a running stream, even if she rode on a big black cat's back and had all her animal companions with her.

Not all the people who attended these strange witches' meetings believed in witchcraft, and they had no part in the meetings. They came only to see the strange antics and happenings. They wore masks so that their neighbors might not recognize them. Thus our custom of Halloween masks came about.

Ducking for apples is a custom that came from an Irish ceremony of a bonfire-lighted Halloween. Apples and nuts, which were a part of the winter store of food, became a big part of this ceremony. And so we follow the habit of serving apples and nuts at Halloween parties.

The pumpkin jack-o'-lantern is thought to be an American custom. It probably came from the idea of the masks and long hoods that Halloween revelers wore long ago.

(Sunday School Board Syndicate, all rights reserved)

Sooner the Quicker!

TOURIST: "What's the speed limit through this quaint village?"

NATIVE: "We don't have any. You city folks can't go through here fast enough to suit us."

Bargain Conscious

WIFE (to husband): "I just overheard the best news about the house we're having built. One of the carpenters told another that the whole thing is being constructed with green lumber. Isn't that grand? Now, we won't have to buy that green paint."

NEEDED

Needed: Ten or eleven foot pews for a new Southern Baptist Mission at Dolph, Ark. Please contact Rev. Lloyd E. Patterson, Pastor First Baptist Church Calico Rock, Ark.

If She Could Only Cook!

HEAR THE one about the man from Mars who landed in Los Angeles? He was dressed in a spaceman's suit — complete with metal helmet, antenna, the whole bit. He wandered into a neighborhood tavern where his attention was caught by a flashy juke box playing a sweet recording. The Martian ambled over to the juke box, put his arm around it and said, "What's a nice girl like you doing in a joint like this?"

CUSTOMER: Can this fur coat be worn in the rain?

SALESMAN: Lady, did you ever see a rabbit carry an umbrella?"

King's "X"

"YOU LOOK disturbed, dear," the wife greeted her husband sympathetically. "Did you have a bad day at the office?"

"I'll say I did," he muttered. "I took one of those aptitude tests and boy, oh boy, it's a good thing I own the company."

Only One to Go

A REPORTER, interviewing a man who had reached his 99th birthday, said, "I certainly hope I can return next year and see you reach 100."

"Can't see why not, young feller," the old timer replied, "you look healthy enough to me."

Petty Cash

A WEALTHY Texan tipped a waiter \$100 in a New York restaurant.

"Pardon me," gasped the astonished man. "You gave me \$100. There must be some mistake."

"That should teach you a lesson," complained the Texan. "Next time I come, I hope I'll get some better service."

Church Chuckles



"Listen, that window was all cracked up before our baseball hit it!"

The minister sees beautifully wrought stained glass . . . the boy sees only an old window, full of cracks. Here is a simple illustration to show the broad difference in points-of-view between Youth and Adult . . . a difference as old as Time.

Fellowship of Believers

By DR. C. GORDON BAYLESS
(Central Church, North Little Rock)
Acts 4:32 to Acts 5:16

PEOPLE WHO think alike, feel alike, and act alike, enjoy being together. The fellowship of the early church reminds us of the old saying "Birds of a feather, flock together." Luke reports, "Now the company of those who believed were of one heart and soul . . ." This is the way God intended for it to be. Coming together and working together is still true of genuine believers. Christ is the magnet who draws them irresistibly to His Church with its many opportunities for Christian service.



DR. BAYLESS

A church member who finds it a burden and a bore to meet and to work with God's people had better check his reasons for this attitude. The Christian religion is a lift, not a drag. Should this divine lifting power be absent from his life, he has not been "born again." Either that, or the elevator power given by Christ to his children has become rusted and corroded by a blacksliden life. Christ can put the backslider's machinery into quick working order if the disobedient believer will "repent and do the first works."

The first Christians not only came together often but they were unified in their devotion to Christ and to one another. This single-mindedness led them to sing together, pray together, visit each other's homes, and to see that "there was not a needy person among them." They were learning early that "it is more blessed to give than to receive." Voluntarily they sold their possessions to create a fund which was to be distributed according to each man's needs. Unlike communism they were not forced to sell, nor to give, and the practice was not permanent as it is with communism. Selling and giving was a spontaneous outburst of generosity prompted by the gratitude in their hearts for Christ who had given to them eternal life.

The Fly in the Ointment

Something always happens to soil a perfect fellowship. Satan can't endure such a meeting of minds and hearts as these Christians had. It was too powerful. A sign in Ohio used to read, "Army troops crossing this bridge must break step." Too many soldiers putting their feet down at the same time might break the wooden bridge. Satan knew and feared the power of Christian unity and dedication. He

must find someone in their group who would be the willing medium through whom he could work to mar the unity and dedication. He selected Ananias and his wife, Sapphira. Their sin was simply that they wanted the reputation for being generous, devoted, top-layer Christians without paying the price. But let us not be too harsh in our criticism of them. Any church member today who seeks an office or position in the church but is unwilling to pay the price for honoring his office could be an Ananias. He wants the honor without the sacrifice. Ananias was the first Great Pretender. His offspring are legion. His wife was even more guilty. Why? She connived with her husband to deceive the church. She could have stopped him. But she made the old, old mistake that so many wives make, of catering to the husband he was that day, rather than to the man he might have become with the help of a good wife. She was more guilty also, because she had the space of three hours in which to repent and tell Peter the simple truth. Both of them committed premeditated sin.

The Awful Purge

Why did God eliminate them from the Church so suddenly and so drastically?

(1) The church was in its infancy. Ananias and Sapphira were walking roughshod over truth and life in its very beginning.

(2) God intended for the church to be pure. God and a lie cannot fellowship. Some sins await judgment — some are punished here.

(3) They lied not unto man but unto God. Peter would no doubt have forgiven them. God could not forgive, considering the infancy and the purity of the church. Moreover, they had permitted Satan to fill their hearts. Why? They didn't have to give him control; they were free moral agents.

A question: why doesn't God repeat this purge in the church? He does. Such church members die at the roots even before the visible parts of their lives show death. The covetous, the immoral, and the hypocrite are "already dead even while they live." They have a name to live but are dead. Church members who live inconsistent lives are earth's unhappiest people. God sees to it that they are—and they should be. They tear down faster than the dedicated members can build. Double-acting church members are the chief obstacles to evangelism. They unwittingly say for all to hear, "We can take the church or leave it." Most members who neither attend nor support the church have also left Christ.

Power Through Subtraction

God had removed two rotten apples

from the barrel. Following this the church experienced a new surge of power and influence. "And great fear came upon all the church . . . many signs and wonders were wrought among the people . . . were all with one accord . . . believers were the more added to the Lord" Acts 5:11-14. What would happen if the church should clean its house? How long since your church has disciplined or even dropped any names from your roll? What of the old phony statistics some churches report each year, with some in the grave, some in jail, some having joined other denominations, and even some, or many, of the resident members making it plain to the church they want no part of the church morally, financially nor attendance-wise. No wonder the church is weak and has only a minimum of influence with outsiders. Let all churches examine their membership roll and do some subtracting. There is often power in religious subtraction! Gideon discovered that he would lose battles with thirty-two thousand soldiers but could conquer with three hundred dedicated men. It is time for the church to put meaning into church membership and honesty in its statistical reports! ■

If You Are Interested In A
Safe, Sound Christian
Investment Paying

6% INTEREST

Buy

**Southern Baptist
Security Bonds
of Denver, Colo.**

Tear Out and Mail Today
Colorado Baptist General Convention

Dr. Willis J. Ray, Exec. Secy.
1470 South Holly
Denver 22, Colorado

Please send by return mail information on Security Bonds.

Name _____

Address _____

City _____

State _____

I am interested in bonds maturing in:

1965 _____, 1966 _____, 1967 _____, 1968 _____,
1969 _____, 1970 _____, 1971 _____, 1972 _____,
1973 _____, 1974 _____, 1975 _____, 1976 _____.

I prefer bonds in the following denominations:

\$100 _____, \$250 _____, \$500 _____, \$1,000 _____,
\$2,500 _____, \$5,000 _____, \$10,000 _____.

QUARTERLY REPORT

Total Cash Contributions Received in Office of Executive Secretary of
Executive Board, Arkansas Baptist State Convention

(This statement does not include receipts for Ministers' Retirement Fund)

Notify Dr. S. A. Whitlow, 401 W. Capitol, Little Rock, of any errors in this report.

Churches and Pastors	Cooperative Program	Designated	Churches and Pastors	Cooperative Program	Designated	Churches and Pastors	Cooperative Program	Designated
ARKANSAS VALLEY ASSOCIATION			BLACK RIVER ASSOCIATION			BUCKVILLE ASSOCIATION		
Barton: K. Caery	\$115.50	-----	Pleasant Hill: W. Scott	17.00	-----	Ione: J. Evans	-----	-----
Beck Memorial: J. Tucker	35.00	-----	Rogers, 1st: L. O'Kelly	2,175.02	58.00	James Fork: E. Hogan	98.16	-----
Brickey's: B. Smith	22.48	-----	Siloam Springs, 1st: C. Palmer	2,161.01	-----	Long Ridge: R. Whitten	-----	-----
Brinkley	999.00	-----	Sugar Creek: T. Richards	-----	-----	Mansfield: C. Lyon	610.47	60.64
Clarendon: L. Joyner	150.00	-----	Sulphur Springs: F. Hamilton	54.01	-----	Midland: R. Lanman	75.17	10.65
Corder's Chapel: A. Clayton	34.91	-----	Sunnyside: W. Farley	-----	19.42	New Home: W. Nance	3.00	-----
Elaine: M. Dark	1,441.49	-----	Twelve Corners: J. Lawson	26.55	-----	Parks: H. Allen	-----	-----
Friendship: C. Caery	43.08	-----	Missions—	-----	-----	Pilot View: D. Preston	-----	-----
Helena 1st: J. Brewer	2,926.00	\$ 11.81	Park Street: J. Nash	38.08	2.75	Pleasant Grove No. 2: J. Evans	21.00	-----
Hughs: B. Pierce	900.00	30.00	Totals	\$10,135.88	\$360.49	Pleasant Grove No. 3: H. Adams	-----	-----
Jeffersonville: W. Ginn	11.40	-----	BIG CREEK ASSOCIATION			Providence: O. Wehnt	-----	-----
Lambrook: W. Steward	19.62	19.43	County Line	4.00	-----	Rock Creek: H. Milam	17.00	-----
Lexa: C. Castleman	84.15	-----	Elizabeth: H. Malone	3.00	-----	Shiloh: H. Adams	-----	-----
Marianna: D. Halre	1,500.00	-----	Enterprise	24.00	-----	Union Hope: J. Staggs	-----	3.00
Maryell: J. Riggs	525.95	-----	Flora	-----	-----	Unity	4.28	-----
Mexican: E. Gonzales	-----	-----	Gum Springs	10.01	-----	Waldron: J. James	2,223.58	13.42
Monroe	28.40	-----	Hardy: P. Harrington	341.88	4.00	West Hartford: W. Leonard	70.00	22.14
Moro: J. Collier	100.00	62.13	Mammoth Spring	-----	-----	Winfield: M. Wright	37.78	-----
North Side: B. Ferguson	2.77	-----	Mt. Calm	-----	-----	Totals	\$3,768.29	\$113.97
Old Town: D. Steele	-----	-----	Mt. Zion: C. White	16.65	4.00	CADDO RIVER ASSOCIATION		
Onelda: T. Long	6.67	-----	Saddle	-----	-----	Amity: L. Vowan	\$ 71.55	\$14.52
Petty's Chapel: W. Ginn	60.00	-----	Salem: D. Green	100.00	6.00	Big Fork	-----	-----
Rehobeth: B. Smith	16.00	-----	Spring River	-----	-----	Black Spring	15.00	-----
Snow Lake: R. Raiford	-----	-----	Viola: H. Pryor	56.97	6.00	Caddo Gap	15.00	-----
Turner	51.10	-----	Totals	\$556.51	20.00	Glenwood: B. Denton	140.70	5.19
West Helena: W. Deese	3,223.08	-----	BLACK RIVER ASSOCIATION			Liberty: S. Sherman	-----	-----
West Helena, 2nd	90.00	-----	Alicia: N. Bryan	16.42	-----	Little Hope: A. Beshears	6.00	-----
Totals	\$12,386.60	\$123.37	Banks: S. Norris	12.00	-----	Mt. Gilead: S. Sherman	-----	-----
ASHLEY ASSOCIATION			Black Rock: C. Johnson	41.92	9.20	Mountain Home	-----	-----
Calvary	-----	-----	Campbell Station: J. Baker	-----	-----	Mt. Ida: J. McClenny	307.26	-----
Corinth "A": O. Lindsey	\$ 165.95	-----	Clear Springs: J. Sheets	-----	-----	Norman: W. Miller	126.99	6.00
Crossett, 1st: B. Hickem	3,052.75	-----	Clover Bend	-----	-----	Oak Grove	-----	-----
Crossett, 2nd	20.00	-----	College City: A. Psalmonds	440.00	-----	Oden: W. Standiford	85.00	-----
Eden	-----	-----	Diaz: D. Cooper	137.94	-----	Pencil Bluff: L. Newcomb	83.16	-----
Fellowship: R. Carpenter	155.10	-----	Grubbs: J. Montgomery	25.08	6.54	Pilgrims Rest	-----	-----
Fountain Hill: W. Nelson	172.61	10.50	Horseshoe	4.73	-----	Pine Ridge	15.00	-----
Hamburg: E. Griever	1,200.00	-----	Hoxie	161.28	5.00	Pleasant Valley	-----	-----
Jarvis Chapel: S. Powell	19.50	-----	Imboden: J. Smith	100.51	54.35	Refuge: R. Watson	18.00	-----
Magnolia: W. Braswell	-----	-----	Immanuel, Newport	-----	-----	Sulphur Spring: C. Moore	85.38	7.00
Martinville: C. Johnson	-----	-----	Jacksonport	23.37	-----	Totals	\$969.04	\$32.71
Meridian: M. Doss	16.00	-----	Murphy's Corner	-----	-----	CAREY ASSOCIATION		
Mt. Olive No. 1	-----	-----	New Hope No. 1: W. Behannon	81.83	-----	Bearden: A. Upchurch	\$ 241.88	\$ 10.00
Mt. Olive No. 2: R. Bunch	431.55	-----	New Hope No. 2: S. Norris	22.20	-----	Bethesda: W. Poole	20.09	-----
Mt. Pleasant: S. Allison	-----	-----	Newport 1st: E. McDonald	713.40	179.45	Calvary, Camden: W. Stallings	167.00	-----
Mt. Zion: L. Brady	8.75	-----	Old Walnut Ridge: R. Pittman	27.55	-----	Dalark	5.00	-----
North Crossett: K. Corkern	150.00	5.19	Ozark: J. Hamilton	9.00	2.50	Fordyce: C. Ellis	3,462.35	17.05
Shiloh	-----	-----	Pitts	-----	-----	Hampton: C. Boone	243.19	-----
Temple: J. Buckner	479.88	-----	Pleasant Ridge: J. Hall	12.00	-----	Harmony	9.00	-----
Unity: J. Byrd	-----	-----	Pleasant Valley	-----	-----	Holly Springs: J. Albritten	30.00	-----
Totals	\$5,872.09	\$15.09	Ravenden: B. Johnson	26.00	11.00	Manning: L. Jordan	48.60	34.59
BARTHOLOMEW ASSOCIATION			Sedgwick: S. Goza	30.00	-----	New Hope	77.15	5.00
Antioch: C. Brown	\$ 60.00	-----	Smithville: H. Haney	45.00	-----	Ouachita: J. Graves	24.00	-----
Cominto: E. Wheeler	6.00	-----	Swifton: R. Pittman	15.00	-----	Prosperity: J. Hickman	64.53	-----
Corinth "B": B. Meggs	10.00	-----	Tuckerman: B. King	140.00	15.00	Shady Grove: F. Taylor	20.00	-----
Eagle Lake: R. Shreve	-----	5.00	Walnut Ridge: W. Heard	939.02	25.00	Southside: F. Bynum	-----	-----
Ebenezer: D. Black	99.78	-----	White Oak: G. McGehey	-----	-----	Sparkman: D. Lumpkin	650.00	56.50
Enon: E. Johnson	64.95	-----	Totals	\$3,024.25	\$308.04	Thornton: W. Poole	132.52	-----
Florence: H. Gray	20.00	-----	BOONE COUNTY ASSOCIATION			Tinsman: M. Keenen	74.41	-----
Holly Springs	86.00	-----	Alpena: S. Hacker	\$ 105.00	-----	Willow: J. Jennison	-----	-----
Immanuel, Warren: Q. Mathis	-----	-----	Batavia: E. Gault	33.00	-----	Missions—	-----	-----
Ladell: L. Brady	9.45	-----	Bear Creek Spring: P. Fitchue	24.00	-----	Eagle	-----	-----
Macedonia: R. Adams	-----	-----	Bellefonte: E. Powers	25.88	-----	Totals	\$5,270.61	\$123.14
Marsden	4.00	-----	Burlington: H. Allred	71.75	-----	CAROLINE ASSOCIATION		
Monticello, 1st: T. Welch	683.75	-----	Eagle Heights: D. Jackson	373.00	\$20.00	Austin Station: E. Elrod	51.39	-----
Monticello, 2nd: J. Holcomb	429.76	3.00	Elmwood	10.00	-----	Baugh's Chapel: M. Rice	9.00	-----
New Liberty: R. Nixon	-----	-----	Everton: E. Powers	15.00	-----	Biscoe	14.30	21.50
North Side: R. Howie	145.60	6.16	Gaither: M. Spence	21.44	-----	Brownsville	47.82	4.00
Old Union: H. Gray	-----	-----	Grubb Springs: D. Champlin	23.89	-----	Cabot: H. Lipford	1,155.00	3.00
Pattsville	-----	-----	Harrison 1st: B. Cook	2,715.22	10.00	Caney Creek: W. Barbour	84.00	-----
Pleasant Grove: D. Castleberry	5.22	-----	Hopewell: P. Fitchue	-----	-----	Carlisle: R. Bishop	1,066.56	-----
Prairie Grove: R. Nixon	18.71	-----	Lead Hill: T. Eoff	30.00	-----	Chambers: M. Bridges	6.00	-----
Saline: H. Gray	4.50	-----	New Hope: E. Cox	72.00	-----	Coy: H. Austin	160.00	-----
Selma: R. Johnson	22.66	-----	Northvale: H. Allred	30.00	-----	Des Arc: E. Banton	266.02	42.00
Union Hill: D. Castleberry	30.00	-----	Omaha: Q. Middleton	123.05	15.38	Devalis Bluff: L. Jolly	110.08	29.15
Warren, 1st	3,078.76	59.00	Oregon Flat: T. Logan	45.00	-----	England: H. White	68.42	-----
Wilmar: J. Warbington	61.20	9.00	Prairie View: M. Edmonson	6.00	-----	Hazen: W. Byrum	30.00	-----
Totals	\$4,840.34	\$82.16	Southside: J. Stratton	69.16	-----	Humnoke	42.08	-----
BENTON COUNTY ASSOCIATION			Union: J. Carter	15.00	-----	Lonoke: J. Harville	1,362.31	-----
Bentonville: A. Butler	1,738.14	46.13	Valley Springs	22.50	4.50	Mt. Carmel: C. Atkinson	103.00	9.57
Centerton: M. Coffelt	-----	59.10	Woodland Hgts.: M. Edmonson	118.31	17.90	New Hope: E. Dacus	-----	-----
Central Avenue, Bentonville:	-----	-----	Missions—	-----	-----	Oak Grove: J. Moody	50.00	-----
L. Henson	53.98	-----	Western Grove: J. Carter	-----	-----	Old Austin: C. Fuller	64.52	-----
Decatur: S. Haley	598.10	4.00	Totals	\$3,949.20	67.78	Pleasant Hill: E. Ridgeway	-----	-----
Garfield: J. Ford	53.21	-----	BUCKNER ASSOCIATION			Pleasant Valley: E. Ridgeway	15.00	-----
Gentry: J. Porter	936.62	27.50	Abbott: J. Maness	\$ 30.40	-----	Steel Bridge: G. Nethercutt	-----	71.10
Gravette: W. Mattingly	344.98	-----	Amity: H. Milam	-----	\$ 4.12	Toletc: D. Dodson	-----	1.50
Gum Springs: R. Barnett	48.99	22.25	Bates	-----	-----	Ward	65.00	13.35
Harmony	-----	-----	Calvary: P. Babb	-----	-----	Wattensaw: H. Boyd	95.90	-----
Harvard Avenue, Siloam Springs:	-----	-----	Cauthron	11.95	-----	Totals	\$5,439.40	\$195.17
J. Hopkins	245.00	-----	Cedar Creek: W. Nance	-----	-----	CARROLL ASSOCIATION		
Highfill: K. Kern	174.53	26.30	Clark's Chapel: R. Duncan	15.00	-----	Berryville: J. Measel	\$ 250.00	-----
Immanuel, Rogers: F. Aikman	466.58	31.83	Dayton: E. Pennington	45.79	-----	Blue Eye: J. Cox	33.73	-----
Lakeview: A. Combs	130.32	-----	Denton: V. Heydenreich	39.70	-----			
Lowell: E. Matthews	276.13	-----	Fellowship: J. Kelton	96.83	-----			
Mason Valley: J. Stephen	50.78	6.00	Friendship	-----	-----			
Monte Ne: W. Bland	117.50	-----	Hartford: H. Plunkett	150.26	-----			
Pea Ridge: R. Moran	429.35	57.21	Haw Creek: J. Hodges	40.77	-----			
			Hon	38.88	-----			
			Huntington: A. Wilsey	138.27	-----			

Churches and Pastors	Cooperative Program	Designated
Cabanal: W. Lively	5.00	\$ 4.06
Eureka Springs	244.62	58.25
Freeman Heights, Berryville:		
E. A. Ingram	411.84	53.32
Grandview: H. Martin	169.86	-----
Green Forest: G. Poole	398.07	-----
Rock Springs: B. Huffstutter	30.00	-----
Rudd Mission	8.00	-----
Totals	\$1,551.14	\$115.63

CENTENNIAL ASSOCIATION		
Almyra: G. Fowler	\$ 187.76	-----
DeWitt: A. Heskett	1,097.50	-----
East Side, Dewitt:		
A. Van Horn	77.35	3.00
Gillett: I. Davis	40.82	97.25
Hagler: D. Jameson	108.66	30.00
Humphrey	84.30	16.50
North Maple, Stuttgart: C. Hill	159.99	8.00
Reydell: H. Green	30.00	-----
St. Charles: J. Gannaway	-----	-----
Stuttgart, 1st: D. Bledsoe	3,000.00	7.69
Tichnor	45.00	-----
Totals	\$4,831.38	\$162.44

CENTRAL ASSOCIATION		
Antioch: M. Hester	304.71	4.00
Bauxite: E. McCord	917.28	-----
Benton, 1st: B. Selph	3,816.95	749.46
Bule: W. Burnette	64.17	-----
Calvary, Benton: J. Royal	543.19	30.00
Central, Hot Springs: J. Hill	1,825.03	-----
Emmanuel, Hot Springs:		
R. Shreve	158.11	19.53
Fairdale, Hot Springs: C. Chote	-----	5.00
Faith, Benton: I. Parker	8.00	-----
Gilead: J. Babcock	49.56	-----
Grand Avenue, Hot Springs:		
D. Chesser	221.00	5.00
Gravel Hill: W. Brock	15.00	-----
Gum Springs: R. Izard	5.00	-----
Harvey's Chapel: W. Peppers	180.11	-----
Hot Springs 1st: J. Fairchild	1,200.00	3.00
Hot Springs 2nd: O. Bayless	2,095.47	-----
Jessieville: L. Knickerbocker	54.21	5.70
Lake Hamilton: B. Smith	252.74	126.38
Lee Chapel	39.83	-----
Leonard Street, Hot Springs:		
J. Watson	137.82	-----
Lonsdale	16.32	-----
Malvern 1st: D. Hook	2,250.00	58.90
Malvern 3rd: P. Beach	597.83	4.00
Memorial: J. Melton	305.56	-----
Mill Creek: G. Armstrong	2.00	-----
Mountain Pine: R. Tucker	71.31	24.40
Mt. Vernon: W. Calhoun	41.00	-----
Old Union: T. Robertson	69.30	-----
Owensville: C. Shell	161.65	120.95
Park Place, Hot Springs:		
D. Blevins	1,555.26	-----
Pearcy: E. Rushing	60.00	-----
Piney: O. Golden	785.23	11.00
Pleasant Hill: W. Pannell	96.00	27.53
Ridgecrest: L. Garner	11.82	-----
Riverside: M. Gates	96.22	-----
Sheridan 1st Southern:		
D. Watkins	42.59	3.00
Shorewood Hills: D. Stuckey	252.24	13.00
Walnut Valley: J. McMichael	283.22	4.00
Missions—		
Highland Chapel:		
C. Pennington	120.00	-----
Totals	\$18,705.73	\$1,214.85

CLEAR CREEK ASSOCIATION		
Alma: K. Grant	\$ 480.46	\$22.58
Arkansas Street, Van Buren:		
R. Morrison	6.40	8.59
Calvary, Van Buren: F. Dillard	83.00	-----
Cass: I. Crossland	7.00	-----
Cedarville	129.63	-----
Central, Altus: L. Pinnell	12.00	-----
Clarksville 1st: P. Church	200.00	12.00
Clarksville 2nd: G. Domerese	70.11	-----
Coal Hill	9.91	-----
Concord: L. Hatfield	100.00	-----
Dyer: H. Morris	33.12	7.96
Hagarville: T. Cooper	25.58	-----
Hartman: F. Painton	20.00	-----
Kibler: C. Chesser	350.57	12.00
Lamar: G. Williams	45.92	-----
Mountamburg: W. Ayers	60.37	-----
Mulberry: C. Duncan	48.88	-----
Oak Grove: J. Burrows	348.73	-----
Ozark: B. Haney	718.49	-----
Ozone: E. Linton	15.00	-----
Rudy: H. Thompson	-----	-----
Shady Grove: W. Flanagan	13.55	-----
Spadra: E. Linton	4.00	-----
Trinity, Crawford Co.:		
L. Woodard	5.00	-----
Trinity, Johnson Co.: A. Wheeler	-----	-----
Union Grove: J. Woodard	41.42	16.63
Uniontown: C. Hamm	10.02	-----
Van Buren 1st: T. Jordan	1,650.00	266.63
Webb City	84.82	-----
Woodland: L. Dewett	-----	-----
Missions—		
Batson: G. Payne	6.00	-----
Miscellaneous	-----	50.00
Totals	\$4,582.98	\$396.39

CONCORD ASSOCIATION		
Barling: D. Land	336.57	-----
Bloomer: R. Davis	15.00	-----
Bluff Avenue: A. Escott	522.31	-----
Booneville: N. Lerch	1,614.06	31.87



Come On — You Have The Ball!!!



Let's Play Fair
With These Boys and Girls
Who Need Our Care



THANKSGIVING OFFERING
A PART OF ARKANSAS BAPTISTS PROGRAM
OF SUPPORT FOR CHILD CARE



BOTTOMS BAPTIST ORPHANAGE

Monticello, Arkansas

H. C. Seefeldt, Supt.

Jim Jones, Asst. Supt.

Churches and Pastors	Cooperative Program	Designated	Churches and Pastors	Cooperative Program	Designated	Churches and Pastors	Cooperative Program	Designated
Branch: H. McGehee	20.76	28.43	DELTA ASSOCIATION			New Hope: O. Coln	44.23	-----
Burnville	44.18	-----	Arkansas City: T. James	\$255.00	\$28.56	New Liberty: H. Shultz	30.00	-----
Calvary, Ft. Smith: R. Parker	1,344.61	-----	Auids: C. Adams	-----	-----	Nutts Chapel: J. Sparks	25.00	-----
Charleston: E. Ryan	752.51	-----	Bayou Mason: J. Hughes	49.60	-----	Oak Grove	64.15	-----
East Side, Ft. Smith	242.20	7.00	Bellaire: D. Jones	81.00	3.00	Paragould, 1st: J. Yates	2,828.29	-----
Excelsior: L. Gilliam	63.25	-----	Bethel: J. Divine	-----	-----	Pleasant Valley: J. Wilcoxson	8.00	-----
Ft. Smith 1st	12,292.41	450.00	Boydell: E. Harris	-----	-----	Robbs Chapel: G. Renshaw	75.00	4.00
Glendale: R. Kesner	127.26	-----	Central: J. Cobb	-----	-----	Rock Hill: C. Abanathy	9.00	-----
Grand Avenue, Ft. Smith	4,585.29	5.00	Chickasaw: R. Hunt	205.87	-----	Spring Grove: K. Morgan	-----	5.00
Greenwood	485.25	44.25	Chicot: O. Trout	20.00	-----	Stanford: L. Jackson	82.88	-----
Hackett: F. Sheeks	60.00	-----	Collins: J. Hayes	13.00	-----	Stonewall: C. Abanathy	-----	-----
Highway 96: A. Kent	-----	-----	Crooked Bayou: J. Hudson	15.00	-----	Third Avenue, Paragould:	-----	-----
Immanuel, Ft. Smith:	-----	-----	Daniel Chapel	9.72	-----	H. Gallop, Jr.	58.40	5.00
S. Eubanks	1,925.00	-----	Dermott, 1st: H. O'Bryan	1,058.52	-----	Unity: A. Psalmonds	45.00	-----
Jenny Lind: E. Adams	340.36	44.29	Dermott, 2nd: B. Carter	-----	-----	Village: A. Collier	-----	-----
Kelly Heights, Ft. Smith:	-----	-----	Eudora: H. Bradley	1,356.17	52.00	Vines Chapel: J. Moore	6.75	-----
M. Walker	981.65	66.47	Gaines: W. Sims	50.51	-----	Walcott: C. Moses	330.97	-----
Lavaca: C. Stewart	378.23	3.92	Grace: T. Christmas	12.00	-----	Walls Chapel: H. W. Clements	13.20	-----
Magazine: T. Stanfill	95.00	-----	Halley: C. Howie	8.24	-----	Totals	\$5,886.49	\$112.69
Mixon	30.00	-----	Jennie: R. Sherden	113.49	36.00	HARMONY ASSOCIATION		
Moore Rock: J. Simons	18.00	-----	Jerome: H. McLeod	15.00	5.34	Alzheimer: W. Smith	374.70	-----
Mt. Harmony: L. Gilliam	-----	-----	Kelso: R. Creed	120.00	-----	Anderson Chapel: L. McDoughle	26.00	100.00
Mt. Zion: R. Kress	20.00	-----	Lake Village	1,000.00	10.00	Centennial: L. Eaker	125.00	-----
North Side, Charleston:	-----	-----	McArthur: T. Davis	63.04	-----	Central: B. Wofford	354.16	-----
F. Farles	88.13	-----	McGehee: M. Craig	2,409.44	77.36	Douglas: E. Ray	57.30	-----
North Side, Ft. Smith:	-----	-----	Midway	-----	-----	Dumas: M. Cole	1,150.00	23.14
O. Haley	16.90	-----	Montrose: N. Tilbury	20.00	-----	Forrest Park: G. Smith	671.00	-----
Palestine: K. Mansell	50.00	-----	New Hope: M. Howie	45.00	-----	Gould: D. Wright	172.85	-----
Paris: T. Hinson	1,951.03	26.00	Oak Grove: H. Jones	12.00	-----	Grady: N. Finch	98.90	15.76
Pine Log	-----	-----	Omega: J. Patterson	115.43	29.71	Greenlee Memorial: W. Pruitt	182.50	-----
Ratcliff: B. Martin	32.96	43.29	Parkdale: J. Barnes	40.12	-----	Hardin: M. Grady	159.14	-----
Roseville: W. McAfee	-----	-----	Pleasant Ridge: O. Garner	-----	-----	Hickory Grove: O. Houston	24.00	-----
Rye Hill: W. McIver	175.44	-----	Portland: D. Bowman	185.32	24.75	Immanuel, Pine Bluff	1,575.00	-----
South Side, Ft. Smith:	-----	-----	Richland: G. Box	-----	-----	Johnson Chapel	2.00	-----
M. Gennings	1,586.22	41.11	Tillar: L. Ready	81.00	7.00	Kingsland: J. Batson	48.00	4.00
Spradling: P. Graham	738.90	-----	Watson: F. Higginbotham	66.57	-----	Lee Memorial: E. Webb	480.00	-----
Temple: R. Beam	1,360.80	-----	Wilmot: L. Williams	300.00	-----	Linwood: H. Carter	117.48	-----
Towson Ave., Ft. Smith:	-----	-----	Missions:	-----	-----	Matthews Memorial: V. Dutton	630.00	-----
H. Abel	65.00	11.00	Smith Chapel	3.00	-----	More Chapel	-----	-----
Trinity, Ft. Smith:	-----	-----	South McGehee	104.59	-----	New Bethel	2.00	-----
M. Bondurant	2,396.20	-----	Miscellaneous	39.90	-----	Oak Grove: W. Adkins	128.33	-----
Union Hall: R. Whitten	-----	-----	Totals	\$7,868.53	\$273.72	Oakland: R. Simpson	-----	-----
Vesta: E. Story	12.56	-----	PAULKNER ASSOCIATION			Pine Bluff, 1st: R. Smith	6,474.24	2,027.20
Totals	\$34,768.04	\$802.63	Bee Branch: W. Smith	-----	-----	Pine Bluff, 2nd: G. Pirtle	127.98	7.50
CONWAY-PERRY ASSOCIATION			Beryl: E. Smith	51.34	23.00	Plainview: H. Haltom	505.90	-----
Adona: J. Dempsey	15.00	-----	Bono: C. Mason	-----	-----	Plum Bayou: H. Adkins	2.00	-----
Bigelow	29.00	-----	Brumley Chapel: R. Strickland	20.00	-----	Rankin Chapel	2.00	-----
Casa	30.00	-----	Cadron Ridge: T. Akers	48.50	9.00	Rison: H. Elmore	450.00	-----
Harmony	10.00	-----	Cold Springs: H. Nettles	7.50	-----	South Side, Pine Bluff:	-----	-----
Houston: J. Bean	15.00	-----	Conway, 1st: J. Street	1,954.00	-----	R. Lambert	3,849.99	95.00
Morrilton: A. Bennett	1,349.43	50.00	Conway, 2nd: W. West	876.27	-----	Star City: P. Titsworth	1,548.92	72.49
Nimrod: D. Lawrence	15.00	-----	Emmanuel: B. Knabe	-----	-----	Sulphur Springs: P. Pearson	145.38	-----
Perry: P. Corder	10.18	2.00	Enola	24.00	-----	Wabbaseka	6.00	-----
Perryville: L. Gustavus	80.00	-----	Formosa: L. Williams	75.00	-----	Yorktown: W. Weeks	60.00	-----
Pleasant Grove: C. Clay	-----	-----	Friendship: S. Blake	-----	-----	Missions:	-----	-----
Pumerville: W. Brown	105.10	129.92	Happy Hollow: J. Rose	-----	-----	Cornerstone	41.26	-----
Solgohatchie: B. Peppers	10.00	-----	Holland: R. Raines	50.03	-----	Miscellaneous	-----	100.00
South Point: L. Lovell	-----	-----	Lone Star: H. Nettles	24.54	-----	Totals	\$19,592.03	\$2,445.09
Thornburg: P. Corder	20.94	-----	Lone Star: H. Nettles	24.54	-----	HOPE ASSOCIATION		
Union Valley: E. Eaton	24.47	-----	Mayflower: J. Bean	15.00	-----	Anderson: D. Ralley	\$180.43	-----
Totals	\$1,714.12	\$181.92	Mt. Vernon: O. Stallings	18.00	3.00	Antioch: J. Ingram	-----	-----
CURRENT RIVER ASSOCIATION			Naylor: D. Kelly	-----	-----	Arabella Heights, Texarkana:	-----	-----
Biggers: B. Goff	\$100.00	-----	New Bethel: J. Rose	-----	-----	H. Peterson	87.64	-----
Columbia-Jarrett: V. Prince	25.08	-----	Oak Bowery: E. Zimmerebner	90.00	24.16	Beech Street, Texarkana:	-----	-----
Corning: M. Ferges	678.35	10.20	Pickles Gap: M. Smith	157.40	15.94	H. Bennett	5,803.75	448.27
Cypress Grove: D. McBride	20.00	-----	Pleasant Grove: F. Smith	105.00	-----	Bethel	36.36	-----
Hopewell:	22.21	60.67	South Side: W. Smith	30.00	-----	Boyd	-----	-----
Moark	12.50	-----	Union Hill	20.00	-----	Bradley: H. Hime	298.85	51.50
Mt. Pleasant: J. Wicker	21.00	-----	Wooster: C. Mason	-----	-----	Bronway Heights, Texarkana:	-----	-----
New Home: M. Miller	-----	-----	Totals	\$3,566.88	75.10	K. Cooper	-----	-----
Oak Grove	50.00	-----	GAINESVILLE ASSOCIATION			Calvary, Hope: J. Hunt	822.08	373.66
Pettit	-----	-----	Austin	20.00	-----	Calvary, Texarkana: W. Mears	1,229.40	125.00
Pocahontas: L. Ray	240.00	8.00	Browns Chapel: K. Morgan	39.33	-----	Canfield: L. Holt	60.00	-----
Ravenden Springs: C. Callison	12.00	-----	Greenway: P. Hinch	26.25	-----	Central, Magnolia:	-----	-----
Reece Ridge: M. Miller	-----	-----	Harmony: E. Roberts	-----	-----	L. Hunnicutt	4,050.00	307.86
Reyno	139.35	-----	Holly Island: R. Lyons	7.50	15.00	Doddridge: L. Baker	30.00	25.00
Sanders: F. Rodgers	-----	-----	Knobel	80.00	-----	East View: C. Phillips	341.79	-----
Shannon: R. Cadwell	142.98	12.56	Leonard: L. Bailey	56.86	-----	Fouke	260.45	-----
Shiloh, Clay Co.	45.00	6.00	New Hope	87.51	-----	Fulton: J. McClannahan	110.00	-----
Shiloh, Randolph Co.:	-----	-----	Nimmons: E. Gray	40.00	-----	Garland: D. Hillier	-----	-----
A. Collier	-----	-----	Peach Orchard: A. Allison	-----	-----	Genoa: V. Bond	7.01	-----
Success: J. Huffmaster	68.87	-----	Piggott: E. Polk	1,653.85	-----	Guernsey: R. Ramsey	-----	-----
Witts Chapel	16.49	-----	Pollard: E. Gower	12.50	-----	Haley Lake: R. Hughes	-----	-----
Totals	\$1,593.83	\$97.43	Rector: W. Hamilton	339.79	-----	Harmony Grove: J. Duncan	37.50	-----
DARDAENELLE-RUSSELLVILLE ASSOCIATION			Ring: E. Gower	2.27	-----	Hickory Street, Texarkana:	-----	-----
Atkins: C. Kluck	-----	\$23.00	St. Francis: S. Pillow	21.00	-----	T. Morrison	461.02	67.00
Bakers Creek: R. Shields	-----	-----	Tipperary: E. Roberts	16.23	-----	Hope, 1st: J. McClanahan	3,900.00	167.35
Bluffton: B. Kites	20.00	-----	Totals	\$2,403.09	\$15.00	Immanuel, Hope	37.73	-----
Calvary, Gravelly: T. West	-----	-----	GREENE ASSOCIATION			Immanuel, Magnolia:	-----	-----
Carden-Bottom: J. Short	5.00	-----	Alexander: E. Crites	\$145.54	\$3.75	H. Williams	60.00	-----
Centerville	-----	-----	Beech Grove: H. Ferguson	55.00	5.00	Immanuel, Texarkana:	-----	-----
Danville: D. Berry	152.07	-----	Bethel Station: C. Hodges	12.00	-----	J. Stagner	953.23	10.00
Dardanelle: M. Roe	276.63	15.00	Big Creek: M. Price	-----	-----	Lewisville: R. McMurry	693.50	-----
Dover: D. Hankins	78.43	-----	Brighton	-----	-----	Macedonia, No. 1: H. Burris	45.73	-----
East Point	74.26	2.00	Browns Chapel: L. Perkins	\$139.65	24.32	Macedonia, No. 2: R. Eaton	12.50	-----
John Grace Memorial, Belleville	37.50	-----	Calvary, Paragould: J. Gibbs	79.03	-----	Mandeville: E. Croton	60.00	6.20
Havana	7.50	30.00	Center Hill: J. Woodell	15.00	-----	Memorial: J. Bledsoe	222.62	34.60
Hopewell: R. Otey	-----	-----	Clarks Chapel	43.05	-----	Mt. Zion: A. Drowd	30.00	-----
Kelly Heights: H. Hurd	96.12	-----	Delaplaine	18.00	-----	Piney Grove: J. Irish	16.40	18.18
Knoxville: C. Faucett	84.30	7.25	East Side, Paragould:	-----	-----	Plsghah	5.00	-----
London	6.00	-----	G. Whitney	1,165.98	16.00	Red River: E. Cantwell	73.75	-----
Moreland: W. Watts	20.43	-----	Eight Mile: P. Lawrence	-----	-----	Rocky Mound: C. Pearson	45.00	-----
New Hope: J. Partin	84.02	5.30	Fairview	25.00	-----	Shiloh Memorial: J. Wilson	63.00	-----
Ola: D. Moon	165.50	-----	Finch: C. Hodges	26.10	-----	South Texarkana: L. Westbury	-----	-----
Pittsburgh: K. Brown	-----	-----	Fontaine	12.51	-----	Spring Hill: L. Collins	-----	-----
Plainview: D. Coad	36.00	5.50	Immanuel, Paragould: G. Giles	180.46	-----	Stamps: W. Perry	1,650.00	3.00
Pleasant View: K. Edmonson	-----	-----	Lafe: J. Moore	6.00	-----	Silverino: L. Lemmond	60.00	25.17
Rover	32.55	-----	Lake Street, Paragould:	-----	-----	Tennessee: A. Smith	37.50	6.00
Russellville, 1st: E. Williams	1,860.60	-----	F. Jackson	10.00	16.85	Trinity: L. Hughes	246.00	81.00
Russellville, 2nd: J. Gerren	-----	-----	Light: W. Wright	81.25	7.57	Troy: P. Taylor	-----	-----
Missions:	-----	-----	Marmaduke: M. May	59.99	-----	Missions:	-----	-----
Delaware: E. Eaton	28.71	-----	Mounds: J. Hester	103.53	-----	West Side Chapel: C. Baskin	141.49	-----
Totals	\$3,065.62	\$88.05	Mt. Hebron: B. Pettus	53.78	-----	Totals	\$22,167.73	\$1,749.79
			New Friendship: J. McCollum	33.75	25.20			

Churches and Pastors	Cooperative Program	Designated	Churches and Pastors	Cooperative Program	Designated	Churches and Pastors	Cooperative Program	Designated
INDEPENDENCE ASSOCIATION						OUACHITA ASSOCIATION		
Batesville, 1st: J. Holston	2,893.97	124.34	Horatio: R. Armer	60.70	14.00	Acorn: B. Probasco	\$ 101.90	\$ 20.00
Calvary, Batesville: R. Bone	456.33	10.00	Liberty: R. Rogers	10.00	5.00	Bethel: G. Anderson	10.00	-----
Cord: J. Cossey	25.79	-----	Little River	5.00	-----	Board Camp: J. Perkison	86.70	-----
Cushman: E. Duncan	17.00	-----	Lockesburg: V. Bradley	159.24	-----	Cherry Hill	39.36	-----
Desha: E. Haley	66.36	-----	Lone Oak: C. Zachry	-----	-----	Concord: D. Wheat	20.00	-----
Floral: F. Westmoreland	235.40	-----	Mt. Moriah: F. Seaver	-----	-----	Cove: J. Walker	45.50	-----
Marcella: E. Duncan	-----	15.00	Murfreesboro: T. Carroll	246.77	11.00	Dallas Avenue, Mena:	-----	-----
Mt. Zion	30.00	-----	Nashville: J. Harrison	3,107.70	35.46	G. Hughes	229.13	-----
Pfeifer	15.00	7.00	New Home	-----	-----	Gilham: E. Riley	50.00	-----
Pilgrims Rest: E. Rodgers	36.00	9.00	Oak Grove: J. Clayton	30.00	-----	Grannis: P. Baumgardner	222.62	69.98
Pleasant Plains	-----	-----	Ogden: A. Kerr	37.50	-----	Hatfield: V. Ridgeway	90.45	17.25
Rehobeth: W. Bunch	18.00	-----	Ozan	25.00	-----	Hatton	30.00	-----
Rosie: B. Kimbrough	100.00	-----	Rock Hill: C. Zachry	-----	-----	Lower Big Fork: A. Beshears	-----	-----
Ruddell Hill: W. Sample	445.83	21.14	State Line: D. McReynolds	15.00	10.00	Mena 1st: D. Miller	1,935.79	145.22
Salado	10.00	-----	Washington	7.17	-----	New Hope: E. Sherman	35.00	5.00
Sulphur Rock: R. McLeod	1,060.24	8.75	Wilton: R. Rogers	5.00	-----	Salem: J. Mize	18.00	-----
West Batesville: L. Rihard	10.00	-----	Winthrop: E. Jewel	46.67	-----	Two Mile: M. Roberts	10.00	-----
White River: C. Tucker	-----	-----	Totals	\$6,317.72	\$322.48	Vandervoort: P. Petty	43.15	-----
Totals	\$5,439.92	195.24				Westmoreland Heights	36.01	-----
LITELLY ASSOCIATION			MISSISSIPPI COUNTY ASSOCIATION			PULASKI ASSOCIATION		
Caledonia: F. Canady	23.00	-----	Amorel: W. Clayton	\$ 64.02	\$ 33.50	Alexander	\$172.54	\$ 5.54
Callon: C. McCollum	226.30	13.85	Blackwater	49.25	3.58	Amboy: A. Teel	1,654.17	146.98
Calvary, El Dorado: J. Burns	109.00	-----	Blytheville 1st: C. Pitts	6,625.89	340.22	Archview: J. O' Cain	208.76	9.00
Camden, 1st: T. Harris	5,691.69	141.25	Boynton: C. Smith	10.43	-----	Baptist Tabernacle:	-----	-----
Camden, 2nd: W. Rodgers	350.71	25.46	Brinkley's Chapel: W. Piercy	20.51	11.00	V. Yarbrough	184.94	-----
Chidester: R. Miles	88.25	-----	Brown's Chapel: C. Davis	96.00	-----	Baring Cross: W. Smith	7,542.02	333.32
Cross Roads: J. Hargett	269.94	100.00	Calvary, Blytheville:	-----	-----	Barnett Memorial: L. Kendrick	-----	10.05
Cullendale: H. Coble	3,287.63	-----	J. Fitzgerald	-----	22.00	Bayou Meto: E. Irby	209.69	-----
East Main, El Dorado:	-----	-----	Calvary, Osceola: J. Moon	210.85	3.00	Bethany: A. Suskey	170.14	-----
J. Gulledege	618.59	-----	Carson Lake: M. Elder	7.00	-----	Bethel: H. Taylor	73.25	-----
Ebenezer: J. Burton	383.24	-----	Central, Dyess: M. Hester	178.40	7.50	Broadmoor: W. Pruden	100.00	-----
El Dorado, 1st:	-----	-----	Clear Lake: H. Ray	165.00	9.10	Calvary, Little Rock: P. Fox	1,823.74	131.49
W. Warmath	13,172.72	4,272.30	Cole Ridge: M. McGuire	125.00	-----	Calvary, Rose City	-----	-----
El Dorado, 2nd: L. Webb	1,289.98	-----	Cross Roads: H. Fowler	132.63	11.09	W. Philliber	1,094.89	16.00
Elliott: D. Moore	1,362.29	15.00	Dell: H. Sadler	271.40	28.89	Capitol Hill: C. Maynard	120.00	-----
Felsenthal: J. Smith	73.00	111.00	Emmanuel: V. Fowler	67.11	-----	Cedar Heights: R. Dodd	-----	-----
Galliee: J. Livingston	136.92	-----	Etowah	33.47	-----	Central, N. Little Rock:	-----	-----
Grace: D. Creech	137.47	-----	Fairview: H. Gallop	90.00	-----	G. Bayless	1,200.00	16.00
Harmony: E. Wade	-----	-----	Gosnell: W. Kreis	295.55	-----	Crystal Hill: E. Pipkins	134.34	-----
Hillside: H. Voegel, Jr.	42.70	-----	Joner: W. Gossett	100.00	13.00	Crystal Valley: E. Goodson	150.41	15.13
Huttig: B. Murphy	549.45	20.50	Keiser: J. Marlar	157.00	-----	Douglasville: J. Wilson	26.65	-----
Immanuel, El Dorado:	-----	-----	Leachville: H. Presley	613.00	-----	East End: M. Grubbs	217.93	-----
J. Tolleson	3,691.43	-----	Luxora: J. Northcutt	382.82	-----	Estes Chapel: K. Robinson	4.00	-----
Joyce City: T. Newton	1,475.36	43.56	Manila: W. Vestal	510.00	-----	Forest Highlands: D. Ross	312.20	-----
Junction City: C. Allison	996.51	86.15	Mary's Chapel: L. Hinch	51.86	6.70	Forty-Seventh Street: R. Dodd	314.60	-----
Knolwes: H. Diffie	18.63	-----	New Bethel: E. Ray	32.36	-----	Gaines Street: J. Perkins	2,196.55	8.75
Lapile: R. Blann	74.90	-----	New Harmony: E. Tosh	-----	-----	Garden Homes: L. Lewis	25.00	-----
Lawson: R. Harris	-----	22.92	New Liberty: A. Muncy	420.00	-----	Geyer Springs: J. Hassell	240.00	-----
Liberty: C. Johnson	52.49	-----	New Providence: F. Robinson	197.72	3.00	Grace	105.00	40.37
Lisbon	-----	-----	Nodena: R. Johnson	45.00	-----	Gravel Ridge: C. Thompson	67.00	3.00
Louann: L. Rhodes	35.00	6.20	Number Nine: C. Miller	-----	4.00	Graves Memorial: R. Kendrick	54.00	-----
Maple Avenue, Smackover:	-----	-----	Osceola 1st: H. Jacobs	1,950.00	-----	Harmony: J. Hogue	31.37	-----
L. Clarke	622.40	12.00	Ridgecrest: P. Jernigan	75.00	-----	Hebron: J. Whitley	387.63	8.50
Marrable Hill: E. Glover	301.00	43.63	Rosa: B. Thomas	25.54	-----	Highway: B. Wallace	461.80	-----
Midway: P. Major	74.00	-----	Tomato: W. Edmonson	465.00	-----	Hilltop: R. Thomas	15.00	-----
New London: J. Tipton	74.29	-----	Trinity: H. Applegate	-----	-----	Holly Springs: J. Ryan	32.00	-----
Norphlet: A. Moore	2,486.15	-----	Wardell	-----	-----	Immanuel, Little Rock:	-----	-----
North View, El Dorado:	-----	-----	Well's Chapel: T. Bullion	9.75	-----	W. Vaught	11,917.06	372.25
W. Stone	180.77	22.50	West Side, Manila: T. Lee	168.94	9.40	Ironton: E. Edmondson	150.00	-----
Philadelphia: C. Hale	24.00	-----	Whitton: C. Tate	120.71	-----	Jacksonville, 1st: R. McMillan	2,643.16	22.00
Salem: R. Jeane	50.61	-----	Wilson: T. Farrar	1,300.00	22.50	Jacksonville, 2nd: J. Tibbs	421.84	-----
Shuler: C. Ainsworth	22.64	-----	Woodland Corner:	-----	-----	Levy: W. Hunt	1,296.07	75.00
Smackover: D. Taylor	2,267.43	561.65	T. Richardson	18.22	-----	Life Line: H. Odle	855.63	12.74
Snow Hill: J. Lindsey	58.74	-----	Yarbro	110.01	-----	Little Rock, 1st: P. Roberts	7,695.02	17.31
South Side, El Dorado	126.86	-----	Missions—	-----	-----	Little Rock, 2nd: D. Cowling	6,074.16	1,635.26
Stephens: H. Cantrell	1,734.24	6.01	New Hope: C. Cole	14.43	-----	Longview: C. Lawrence	648.87	235.15
Strong: S. Williamson	920.50	-----	Totals	\$15,209.87	\$528.48	Markham Street	25.00	-----
Temple, El Dorado: C. Jones	158.59	-----				Martindale: W. Garner	304.62	-----
Temple, Camden: L. Lasater	277.48	7.00	MT. ZION ASSOCIATION			Mountain View: T. Cupples	-----	-----
Three Creeks: G. Williams	79.98	-----	Alsop: G. Whitmire	\$ 3.20	-----	Nalls Memorial: C. Whedbee	151.20	16.00
Trinity: D. Moore	847.36	-----	Bay: M. Taylor	222.65	\$ 8.00	Natural Steps: W. Landers	32.43	-----
Union: H. Evans	382.62	-----	Bethabara: J. Kinkaid	36.00	-----	North Little Rock, 1st:	-----	-----
Urbana: M. Hargis	31.37	-----	Black Oak: J. Collier	206.12	-----	R. Hilton	1,626.77	-----
Village: G. Bachus	237.20	-----	Bono: A. Wiles	26.29	-----	North Point: E. Wilson	52.40	2.95
Wesson: J. Lair	64.62	-----	Bowman: W. Foster	-----	-----	Park Hill: R. South	6,417.80	85.00
West Side: P. Myers	351.24	-----	Brookland: J. Miles	29.81	8.75	Pike Avenue: R. Dorris	500.48	9.00
White City	-----	-----	Buffalo Chapel: T. Smith	6.00	-----	Pine Grove	492.42	-----
Buena Vista Mission: J. Hogan	54.46	-----	Caraway: R. Bragg	53.72	32.39	Plainview: G. Griffin	266.50	-----
Miscellaneous	20.93	-----	Cash: S. Meador	-----	6.00	Pleasant Grove: E. McElroy	30.00	-----
Totals	\$45,606.68	5,510.98	Central, Jonesboro: C. Mathis	1,698.32	121.00	Pulaski Heights: W. Hicks	7,237.94	487.59
LITTLE RED RIVER ASSOCIATION			Chidress	222.98	-----	Remount	151.55	-----
Brownsville: R. Bailey	\$ 10.24	-----	Dixie: C. Richardson	88.86	24.80	Reynolds Memorial: G. Wilson	340.00	-----
Concord: T. Haley	10.00	-----	Egypt: J. Ratliff	-----	-----	Riverside	136.88	-----
Fairview	-----	-----	Fisher Street, Jonesboro:	-----	-----	Roland: E. Broyles	40.40	-----
Heber Springs: R. Nelson	450.00	\$50.26	H. Robertson	200.38	-----	Rosedale: J. Myers	827.32	34.00
Ida	44.31	-----	Friendly Hope: J. Wilkinson	55.00	8.00	Shady Grove: L. Bynum	57.71	-----
Lone Star: R. Davis	27.10	-----	Jonesboro 1st: C. Holland	4,200.00	91.00	Sheridan, 1st: W. Welch	180.00	-----
Mt. Olive: R. Bailey	-----	-----	Lake City: J. Basinger	3,450.00	379.52	Sherwood: C. Riggland	96.67	-----
Mt. Zion: R. Bailey	25.00	7.34	Lunsford: B. Adams	198.10	9.50	Sixteenth Street	-----	-----
New Bethel: T. Reeves	24.54	-----	Monette: J. Sanders	767.96	20.00	South Highland: R. Branscum	970.00	10.00
Palestine: J. Eason	23.68	-----	Mt. Pisgah: L. Travis	-----	-----	Stanfill: W. Carter	6.00	-----
Pleasant Ridge	8.65	-----	Mt. Zion: M. Jones	-----	-----	Sylvan Hills: W. Hill	910.00	-----
Pleasant Valley	7.00	-----	Needham	23.77	-----	Trinity: W. Ashley	87.00	3.00
Post Oak: R. Davis	15.00	-----	Nettleton: R. Harrington	332.17	-----	Tyler Street: J. Coates	1,016.30	-----
Quitman: J. Eason	24.89	-----	New Antioch: L. Jamison	-----	-----	University: W. Henley	228.02	-----
Shiloh	7.08	-----	New Hope, Black Oak:	-----	-----	Vimy Ridge: R. Ferguson	18.00	10.33
Southside: H. Wilson	15.00	-----	J. Stephens	12.00	15.75	Welch Street: M. Young	293.84	-----
Sunny Slope Mission	2.41	-----	New Hope, Jonesboro: J. Lewis	30.00	-----	West Side	40.00	-----
Totals	\$694.90	\$57.60	North Main, Jonesboro:	-----	-----	Woodlawn: H. Grigson	666.58	-----
LITTLE RIVER ASSOCIATION			R. Williams	54.14	-----	Woodson: E. Havener	-----	-----
Ashdown: R. Ward	\$ 763.23	\$191.32	Philadelphia: P. Stockemer	313.02	-----	Zion Hill: M. Faulkner	23.94	-----
Ben Lomond: D. Ray	-----	-----	Providence: A. Simpson	36.74	-----	Miscellaneous	-----	83.00
Bingen: G. Seavers	-----	-----	Red: O. Conley	-----	-----	Totals	\$74,259.25	\$3,904.71
Brownstown	20.00	-----	Rowe's Chapel: F. Lowe	13.00	13.50	RED RIVER ASSOCIATION		
Central, Mineral Springs:	-----	-----	Strawfloor: A. Watkins	18.00	-----	Anchor: J. Heard	43.90	-----
M. Johnson	152.02	-----	Walnut Street: B. Smith	1,120.95	31.00	Antoine: H. Shreve	127.53	-----
Chapel Hill: H. Walker	-----	-----	Totals	\$13,419.18	\$769.21	Arkadelphia, 1st: S. Reeves	3,040.29	6.00
Columbus: E. Whitten	35.23	-----	NEWTON ASSOCIATION					
De Queen: F. Savage	1,487.11	-----	Cassville: C. Taylor	\$ 19.50	-----			
Dierks	30.00	-----	Deer: C. Woods	15.00	-----			
Foreman	125.08	-----	Jasper: J. McBee	63.24	12.92			
Hicks: J. Duncan	10.00	-----	Parthenon: A. Cobb	63.80	-----			
			Walnut Grove: C. Taylor	45.00	-----			
			Totals	\$206.54	\$12.92			

Churches and Pastors	Cooperative Program	Designated	Churches and Pastors	Cooperative Program	Designated	Churches and Pastors	Cooperative Program	Designated
Arkadelphia, 2nd: T. Dove	1,000.00		Gladden: E. Waddell			West Fork: J. Allen	45.00	222.22
Borch Street, Gurdon:			Goodwin: J. Green	40.77	9.75	Winslow: E. Turner	171.99	7.00
H. Hightower	1,027.37		Harris Chapel: D. Worsley	60.00		Totals	\$9,092.39	\$626.34
Burns: A. O'Kelly	75.00		Hulbert: H. Martin	46.33		WHITE COUNTY ASSOCIATION		
Bethel	57.34	11.00	Hydrick	6.00		Antioch: V. Johnson	30.00	5.00
Bethlehem: W. Givins	10.00		Ingram Boulevard, W. Memphis:			Beebe: R. Howard		37.65
Boughton: C. Reid	29.04		B. Eldridge	50.00		Bethany: H. Owens	9.00	
Caddo Valley: J. Amis	33.00		Jericho: E. Gould	20.09		Central, Bald Knob:		
Cedar Grove	15.00		Madison: J. Webb			M. Wilfong	479.57	
Center Point: G. Branscum	29.50	3.00	Marlon: F. McMenis	204.57		Crosby: J. Pruitt	30.00	
Curtis: R. Tweed	108.58		Mays Chapel: J. Chapman			El Paso: E. Anderson	54.00	12.00
De Gray: E. Turner	102.38		Mt. Pisgah	5		Griffithville	37.50	
East Whelen: J. Barfield	1.00		Palestine: B. Uth	20.00	23.23	Higginson	21.02	3.25
Emmett: R. Lawrence			Parkin: R. Langley	675.00	12.00	Holly Grove		
Fairview: W. Deeton			Pine Tree: J. Latham			Judsonia: W. Burnett	450.00	7.50
Harmory Hill: B. Alexander	85.86	18.68	Riverside			Kensett: R. Strange	188.60	12.72
Hollywood			Shell Lake: E. Crumpton	10.50	5.50	Liberty: C. Crozier	30.51	
Lakeview: W. Gilbreath	16.65		Tilton: O. Puckett			McRae: C. Trammell		
Marlbrook: B. Coonis	7.37		Togo: E. Griffin	30.00		Midway		
Mt. Bethel: D. McBride	30.00		Turrell: H. Spangler	30.00		Morrow		
Mt. Olive			Vandale: G. Minton	32.30		Mt. Hebron: M. Hill	30.00	
Mt. Zion	15.00		West Memphis, 1st: W. Yeldell	2,680.94	5.00	Mt. Sidon: B. Damuth	15.00	
Okolona: E. McDonald	22.23		West Memphis, 2nd:			Pangburn: C. Schmidt		
Park Hill: S. Cooper	207.88	10.00	L. Shortlidge	10.60		Pleasant Valley	15.00	
Prescott: W. Woodell	480.63	28.00	Wheatley: J. Jackson			Rocky Point	8.00	
Reader: H. Hixson	15.65		Widener: J. Gilbreath			Rose Bud: W. Baker	30.00	
Richwoods: H. Shirley	185.93		Wynne, 1st: B. Baker	1,462.56		Royal Hill: J. Pruitt	28.50	
Shady Grove: J. Davis	6.00		Missions:			Searcy, 1st: W. Sewell	2,647.46	25.00
Shiloh: J. Kuykendall	20.00		Wynne Chapel	362.98	10.00	Searcy, 2nd: A. McCurry	75.00	
South Fork	18.00		Midway Mission	9.00		Smyrna: J. Holmes		
Sycamore Grove: G. Dickens	33.88		Totals	10,774.52	\$598.18	Union Valley: V. Johnson	29.26	
Third Street, Arkadelphia:			TRINITY ASSOCIATION			West Point: L. Langley		
G. Blackmon	136.14	5.00	Anderson Tulley: B. Gates	13.50		Totals	\$4,208.42	\$103.12
Unity: A. Bennett	76.12		Bethel	12.00		WHITE RIVER ASSOCIATION		
Whelen Springs: J. Hurd	49.22		Black Oak: T. Childers			Antioch, No. 1: T. Melton	17.77	
Missions:			Calvary: L. Taylor	48.00		Cotter: J. Finn	287.00	
Round Hill			Corners Chapel: B. Crabb	54.10	100.00	East Cotter	12.00	
Totals	\$7,116.49	\$81.68	East Side: H. Stone	68.24		East Oakland: H. Messick	23.00	
ROCK BAYOU ASSOCIATION			Faith: J. Orr	20.00		Flippin: H. King	208.18	
Belview: J. Skaggs	40.00		Fisher: J. Coleman	37.50	10.00	Gassville: O. McCracken	15.00	5.00
Calico Rock: R. Patterson	103.86	23.87	Freer: M. Burge	16.90		Hopewell: S. Wilkerson	78.87	
Evening Shade: W. Wells	11.29		Greenfield: E. Selby	102.70		New Hope: R. Dunn	30.87	
Finley Creek: W. Davis	18.00	2.90	Harrisburg: C. McClain	743.18		Norfolk: B. Ford	15.00	5.00
Fronklin: W. Davis	7.50		Hurds Chapel: E. Parrish			Mountain Home: J. Birkhead	750.00	26.67
Gudon: G. Roberts	12.00		Lebanon: D. Hughes	48.89		Oak Grove: J. Duncan	6.25	
Lone Star			Lepanto: R. Crofts	653.54		Pilgrims Rest	36.00	
Melbourne: H. Cooper	120.00		Maple Grove: F. Bufford	7.50		Pleasant Hill: G. Hicks	42.00	
Mt. Pleasant: G. Roberts			Marked Tree: C. Sawyers	1,329.75		Whiteville: O. McCracken	68.03	75.00
Oxford: J. Skaggs	20.00		Neals Chapel: J. Hodges	34.59	2.75	Yellville: D. Garnett	256.38	14.20
Sage: W. Davis	42.00		Neiswander	33.08		Promise Land Mission	12.35	
Saints Rest: T. Smith			Pleasant Grove	131.33		Rea Valley Mission	13.46	
Sidney: B. Kimbrough	28.37	3.08	Pleasant Hill: A. Houston	40.11		Total	\$1,872.16	\$125.87
Wiseman	9.30		Pleasant Valley: E. Noah	12.00		WOODRUFF ASSOCIATION		
Zion Hill: H. Cooper			Red Oak: H. Jones	28.21		Augusta: T. Lindley	600.00	15.00
Totals	\$412.32	\$34.65	Rivervale: R. Anderson			Cotton Plant: I. Prince	422.00	26.20
STONE-VAN BUREN-SEARCY ASSOCIATION			Shiloh: E. Johnston			Good Hope: H. Wright		
Clinton: C. Overton	\$518.36	\$74.74	South McCormick			Gregory: L. Royer	37.53	
Corinth: C. Harness			Spear Lake: H. Robinson			Hunter: G. Prince	127.70	29.55
Evening Shade: C. Harness	18.10	3.00	Trumann: H. Brown	437.77	15.00	McCroy: C. Evans		57.28
Half Moon: C. Nixon			Tyronne: E. Edwards	1,041.65	18.00	Morton: C. Berry	15.11	
Leslie: C. Gregg	159.76		Valley View: J. Garner	39.93		Patterson	6.85	
Lexington	40.59		Victory			Pleasant Grove	38.49	11.32
Marshall: J. Hogan	260.00		Waldenburg: B. Wright	18.40		Raynor Grove	44.57	
Mountain View: C. Johnson	102.31		Weiner: J. Noble	20.00		Tupelo: J. Burnett		
New Hopewell: C. Roten	30.46		West Ridge: C. Blain			White Lake: L. Bankster		
Pee Dee: E. Corder			Totals	\$4,992.87	145.75	Augusta Mission	38.05	
Plant: G. Keuffman	40.00		WASHINGTON-MADISON ASSOCIATION			Totals	\$1,330.30	\$139.40
Pleasant Valley			Berry Street, Springdale:			Miscellaneous contributions		\$6,930.00
Red Hill: C. Roten	12.00		A. Kindred	\$149.41		Grand Totals	\$394,092.45	\$29,606.85
St. Joe: J. Passmore	21.45		Bethel: J. Teas	73.99				
Scotland: F. Wright	33.03		Black Oak: O. Wright	36.00				
Shady Grove	15.65		Bush Creek: R. Vaughn	99.41				
Shirley: J. Pyles	38.95	11.80	Caudle Avenue, Springdale:					
Snowball: J. Passmore	12.07		O. Hill	240.32	35.75			
Zion: J. Green	40.00		Elkins	8.00				
Zions Light: J. Hogan	17.00		Farmington	134.94				
Totals	\$1,359.73	\$69.54	Fayetteville, 1st: A. Hall	2,649.99	15.00			
TRI-COUNTY ASSOCIATION			Fayetteville, 2nd: E. Logue	50.00	17.05			
Antioch: M. Wilford	\$10.00		Friendship: L. Brown	29.14				
Barton Chapel: T. Pirty			Hindsville	14.45	8.50			
Beckspur: W. Allen	91.80		Huntsville: C. Nelson	60.00				
Bethel: M. Wilson			Immanuel, Fayetteville:					
Burnt Cane: F. Stamps			Willoby	187.50				
Calvary, W. Memphis:			Johnson: L. Weir	113.05	27.15			
W. Sawyer	150.00	1.25	Liberty: T. Spicer	83.30				
Cherry Valley: E. Harvey	228.80	47.00	Lincoln: T. Gordon	262.92				
Crawfordsville: B. Rowell	50.00	10.00	New Hope: B. Dove	5.00				
Earle: E. Abington	959.09		Ogden: C. Tripp	7.14				
Ellis Chapel	29.32		Prairie Grove: J. Coleman	33.00	19.25			
Emmanuel, Forrest City:			Providence: W. Jesser	317.50	149.55			
D. Whitman	15.00		Sonora	40.00				
Fair Oaks: O. Langston	117.61		Southside, Fayetteville:					
Fitzgerald Crossing:			N. Drake	20.00				
H. Tipton	80.00		Springdale, 1st: B. Miley	3,511.00	314.87			
Forrest City, 1st: T. Rucker	3,260.54	474.45	Spring Valley: D. Alderson	101.73				
Forrest City, 2nd: J. Parchman	30.67		Sulphur City: O. Denney	57.00	10.00			
Fortune: C. Heugel			University, Fayetteville:					
Friendship			W. Johnston	590.61				

ARKANSAS BAPTIST
 401 West Capitol
 Little Rock, Ark.
 Return Postage Guaranteed