

Ouachita Baptist University
Scholarly Commons @ Ouachita

Arkansas Baptist Newsmagazine, 1945-1949

Arkansas Baptist Newsmagazine

5-5-1949

May 5, 1949

Arkansas Baptist State Convention

Follow this and additional works at: https://scholarlycommons.obu.edu/arbn_45-49

Part of the [Christian Denominations and Sects Commons](#), [Mass Communication Commons](#),
and the [Organizational Communication Commons](#)

ARKANSAS BAPTIST

BAPTIST OFFICIAL STATE PAPER

VOLUME 48

LITTLE ROCK, ARKANSAS, MAY 5, 1949

NUMBER 18



Oklahoma City's skyline from the arch atop the Federal Building. The eighteen-story Petroleum Building, the Apco Tower, and the First National Bank and Trust Company are visible left to right.

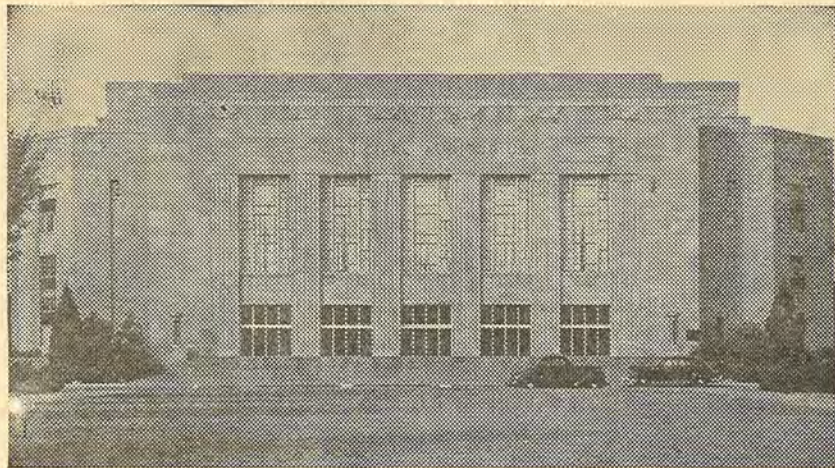
SOUTHERN BAPTIST CONVENTION

Oklahoma City – May 18-22

VALUES OF A BIG CONVENTION — Page 3

1949 Session of . . .

Southern Baptist Convention



Municipal Auditorium of Oklahoma City where the day sessions of the Convention will be held.

The ninety-second session of the Southern Baptist Convention will be held in Oklahoma City, May 18-22. Dr. Robert G. Lee, pastor of Bellevue Baptist Church, Memphis, Tennessee, and president of the Convention, will preside.

Attendance at the 1948 session at Memphis broke an all-time record by registering a total of 9,843 messengers. In addition, several thousand visitors were also in attendance. It is expected that registration alone this year will reach 10,000, and there will be several thousand visitors.

The Convention will hear reports of the many agencies it supports in carrying out its world-wide mission program along with a number of inspirational features.

The current evangelism program of Southern Baptists includes the effort to leave a solid impact for Christ upon all the people of the city where the Convention is entertained. Following the pattern set at the Memphis Convention, a unique program of visitation and personal work in co-operation with Oklahoma City churches will precede a city-wide evangelistic service.

The Southern Baptist Convention is one of the most uniquely organized groups in the world. The Convention is made up of "messengers," not "delegates," from the churches, in that no one carries authority to bind his congregation back home to the decisions of the Convention. The denominational program is purely one of co-operation, with its evangelistic, educational, and benevolent activities planned in accordance with New Testament teaching, and the churches left free to co-operate or not co-operate as they choose.

Marvelous Growth of the Convention

The Southern Baptist Convention was organized in Augusta, Georgia, May 8, 1845, with 325 messengers from eight states—Maryland, Virginia, North Carolina, South Carolina, Georgia, Alabama, Louisiana, Kentucky, and the District of Columbia—for the avowed purpose of formulating plans for eliciting, combining, and directing the energies of the denomination for the propagation of the Gospel.

At that time there were 350,000 members of Southern Baptist churches, including 100,000 slaves. Since 1814, when the old Triennial Convention was organized in Philadelphia,

Southern Baptists had co-operated in carrying on their missionary work with that body.

During these 104 years the Convention has extended its territory to include twenty-one states. It has grown in number of churches to 26,823 with a membership of 6,491,981. These churches have a property value of \$450,385,517, and their total contributions to their local work in 1948 amounted to \$124,855,222 and to missions, benevolences, and education \$31,750,299.

The total population of the territory included in the Southern Baptist Convention is approximately 66,361,000, according to Porter Routh, statistical secretary of the Sunday School Board. Of this number some 34,832,000 are affiliated with some religious group, approximately 10,400,000 being Baptists, white and colored. It is conservatively estimated that there are at least 31,528,100 of all ages and races in the Southern Baptist Convention territory who are unchurched. Approximately 25,537,700 of these are white.

—000—

Telegram

Editor, Arkansas Baptist:

Information from China states that our missionaries are safe and that they do not anticipate personal harm. We have not yet had notice of any plan to leave Shanghai.

Dr. Baker James Cauthen, secretary for the Orient, who is in Shanghai and in close touch with developing conditions, has been authorized to take any action that he and our missionaries may think necessary.

M. Theron Rankin, Secretary
Foreign Mission Board

—000—

CHAPLAINS TO MEET

Your attention is called to the annual meeting of the Southern Baptist Chaplains Association on May 21, 8:00 a. m., fourteenth floor of the Skirvin Hotel, Oklahoma City, Oklahoma.

All Chaplains are invited and urged to be present at this breakfast. The price of breakfast will be \$1.50. Obtain your tickets from Jack Manning, First Baptist Church, Britton, Oklahoma, or from the Chaplains Booth, Convention Hall.

Christian Boys and Girls

A Devotion by the Editor

"Suffer little children . . . to come unto me."

Jesus was once a boy and trusted God. One of the most revealing statements we have concerning the religious development of the boy Jesus is that He grew in grace with God. His life unfolded to God as the flower unfolds to the sun. All His moral and spiritual power flourished in the atmosphere of this intimate and vital relationship with the father of spirits.

You cannot read the story of Jesus in the gospels without the very definite impression that his consciousness of the presence of His Father was the dominant, all powerful, influence in His life.

Jesus never forgot His childhood, nor did He lose the viewpoint of the child. He called all men back to the child attitude as the condition upon which they may enter the kingdom of God.

Mothers brought their children to Him, and how it gladdened His heart! He saw in them the hope of the world and the promise of the kingdom of God on earth. This is the most glorious privilege of parenthood, to bring one's own children to Jesus.

Jesus loved boys and girls and welcomed them and blessed them. And blessed fact! The children came to Jesus unafraid, with glad expectant confidence. Don't you love to see a child run to its father or mother unafraid with gladness and confidence.

Jesus wants the children to be so instructed that they will come to Him just as freely, confident, and hopeful. It is a grave mistake to threaten a child that Jesus won't love it if it is not good, or if it does not obey the parent. That will cast a shadow over the child's conception of Jesus. The child may be taught that its disobedience and waywardness will grieve Jesus, but these do not destroy His love for the child.

What can children do to become Christians? They can do what every child is able to do—trust Jesus. Older people must do the same and they can do no more. When properly instructed, children reach a stage of understanding, which leads to trust, at an early age.

"Then were there brought unto him little children, that he should put his hands on them, and pray; and the disciples rebuked them.

"But Jesus said, Suffer little children, and forbid them not, to come unto me: for of such is the kingdom of heaven.

"And he laid his hands on them, and departed thence" (Matthew 19:13-15).

ARKANSAS BAPTIST

206 BAPTIST BUILDING, LITTLE ROCK
Official Publication of the Arkansas Baptist

B. H. DUNCAN EDITOR
MRS. LESLIE W. BUCHANAN ED. ASS'Y

Publication Committee: W. H. Hicks, Little Rock Chairman; O. C. Harvey, Arkadelphia; Wyley Elliot, Paris; O. L. Bayless, Hot Springs; R. M. Abell, Jasper; Leroy Tedford, Corning.

Entered Post Office, Little Rock, Arkansas, as second class mail matter. Acceptance for mailing at special rate of postage provided in Section 1103, October 1, 1913.

Individual subscription \$2.00 per year. Church Budgets 11 cents per month or \$1.32 per year per church family; Family Groups (10 or more paid annually in advance) \$1.50 per year. Subscription to foreign address \$2.50 per year. Advertising Rates on Request.

The cost of cuts cannot be borne by the paper except those it has made for its individual use. Resolutions and obituaries published at five cents per word. One dollar minimum.

Articles carrying the author's by-line do not necessarily reflect the editorial policy of the paper.



From the Editor's Desk

Values of Big Convention Attendance

Is the Southern Baptist Convention too big? If so, what can be done about it? If anything can be done about it, by whom should it be done?

Should the geographical territory of the Convention be limited? Should the basis of representation be changed so as to reduce the number of messengers? Should the Convention be divided into two conventions?

All these questions have been raised and discussed pro and con. Some brethren seem disturbed because the Convention has grown to be a "mass meeting" rather than a "deliberative body." The fact that the facilities of our largest cities are taxed to the limit to provide accommodations for the Convention seems to be of deep concern to others, and a just cause for adopting some sort of remedial measures which will reduce attendance to the comfortable limits of hotel rooms available, and to the further limits which will assure deliberative efficiency.

It seems that Southern Baptists have done right well, and we see no signs of retrogression. On the contrary, there is every indication that Southern Baptists are launching the greatest and most inspiring programs in their more than 100 years history.

Local Baptist churches were never more active than they are just now. The State Conventions throughout the Convention territory are expanding their work as never before. The South-wide and World-wide programs of our Convention are the greatest ever.

It is our judgment that the large Convention attendance has a distinct value which outweighs any disadvantages which may be attributed to such mass meetings as the Convention sessions have become, though these sessions are more than mere mass meetings.

However, there is untold value in the mass meeting feature of the Convention sessions. There is an inspiration in the gathering of 10,000 like-minded people which cannot be experienced in a small and more deliberative body. More genuine spiritual enthusiasm has been generated among Southern Baptists at these great mass meetings of the Convention than anywhere else. The inspiration and enthusiasm have been widely diffused because of the 10,000 Baptists who have come from every nook and corner of the Convention territory. It would be impossible to so diffuse that inspiration, interest, and enthusiasm except by the individuals who were present.

The Convention program per se does not represent the sole value of the Convention session. There is a feature of the Convention quite aside from the program which has enriched the life of Southern Baptists quite as much perhaps as the program itself. We refer to the visiting among the brethren. But in spite of all that may be said against it, the visiting of the brethren at the Convention has made a tremendous contribution to Southern Baptist life, growth, and expansion.

Both experience and observation come to the defense of this feature of our meetings.

Southern Baptists have sometimes been accused of being narrow and provincial. Just the reverse is true. The man from the humblest pastorate in the land may attend the meetings of the Southern Baptist Convention. There he meets many of his friends and acquaintances whom he would never meet anywhere else in the world. By meeting these friends and making new friends, he is saved from provincialism; his acquaintance is extended, his vision is broadened, his horizons are pushed back, his interests deepened.

The typical Southern Baptist pastor today knows personally and by name literally hundreds of his fellow pastors, not merely in his own state, but throughout the Convention territory. This wide acquaintance is built up and maintained by attending the meetings of the Convention, it could not have been achieved by any other method.

Would it be too bold to suggest that the pastor who has not attended a session of the Convention in the last five years has, in all probability, lost his vision and is in danger of becoming disgruntled and out of step with Southern Baptist progress?

It is our conviction that unfortunate, and perhaps tragic, results would follow, if we should undertake to divide the Convention or reduce the attendance. The advantages of an attendance of 10,000 to 12,000 people more than compensate for any loss of efficiency in the conduct of the program of the Convention sessions. To undertake to reduce this attendance and hold it within certain predetermined limits would create more problems than it would solve. And the problems encountered in an effort to divide the Convention would undoubtedly prove to be insoluble.

—000—

A Conservation Program

Dr. Ralph A. Herring, pastor of the First Baptist Church, Winston-Salem, North Carolina, has developed a program for integrating the new members into the life and program of the church.

This orientation program consists of a series of twelve study periods on Sunday evenings for new members. The series is repeated every three months and is a continuous feature of the church program of activities. Pastor Herring presides over the sessions, directs the program and leads the discussions.

A leaflet, "An Adventure in Christian Fellowship," is given to every person uniting with the church; also a folder is provided each new member in which he may keep for future reference copies of the twelve discussions led by the pastor. We reproduce the contents of this leaflet and folder on page six.

Some such program would seem to commend itself as a necessity for all new church members. It provides the opportunity for the pastor and the new members to become better acquainted; it gives the new members a sense of responsibility, and instructs them in Baptist doctrine and polity.

It Must Not Pass

Paraphrasing the famous declaration of General Foch in the first World War, all Americans who cherish the historic principle of Separation of Church and State should say with absolute determination and finality concerning the aid-to-education bill S246, "It must not pass."

It is going to require the exertion of every power and influence at our command to prevent this bill from passing—a bill which, if enacted into law, would open the federal treasury to unprecedented raids by more than 250 religious denominations.

Addressing a group of 8,000 Catholic educators attending the meeting of the National Catholic Education Association in Philadelphia, Reverend Allen P. Farrell, S. J., a Roman Catholic priest, urged the defeat of the Thomas aid-to-education bill, now pending in the Senate. This bill provides that no federal money can be paid to parochial schools. However, it does provide that federal money can be spent for text books and transportation for parochial school pupils, where this is not in conflict with state laws. Catholics want the use of federal funds for parochial schools and their pupils to be mandatory.

On the other hand, the committee on Christian Liberty of the National Association of Evangelicals, meeting in Chicago, urged that "Federal aid to education should not include parochial schools operated by the Roman Catholic Church."

According to Religious News Service, the committee said that the granting of federal funds for the benefit of parochial school children would mean "another breach in the wall of separation of Church and State." Then it added:

"The Roman Catholic Church is an outright enemy of our form of government. Is our money now used to tear down the very thing for which we stand?"

"If the Roman Catholic Church cannot any longer pay their own way in their own parochial schooling, then let them confess it openly and honestly and cease to attempt to get support from those who disagree with a political philosophy so subversive to true Americanism. We want no public funds to be used to support a sectarian education where un-American conceptions of liberty are taught."

That is plain talk, but it is not too plain. The Roman Catholic Church is an absolute dictatorship. It is seeking to replace our own public school system with its own parochial school system, and it would do this by aid of public tax funds. The Catholic Church is making its boldest effort to get hold of the schools and the school children in America. The ultimate aim of the Roman Church is to become dominant in American schools, American government, and American life. And this same church wants the American tax payers to finance it while it is achieving this aim.

Bill S246, now pending in the Senate, would give the Catholic Church its first real claim upon federal tax funds for the promotion of its plan.

Every non-Catholic church in the nation should follow the example of the Baptist Church at Bald Knob and register their protest with their congressmen and senators.

J. Wesley Hoover Jr. Ordained

Kingdom Progress

Religious Emphasis Week Held At Central College

By OTHAR SMITH

I spent four days on the Central College campus recently. What I saw and felt there was more than a confirming of the good reports that come to our ears. It was a revelation of a part of Central College that can only be experienced. It is the kind of thing that needs to be shared with Arkansas Baptists and that needs to be known.

I knew of the spirit of consecration that existed on the Central campus at Conway, and my heart rejoices to find that spirit still alive and intensified. That group of ministerial students whose hearts are fired with the spirit of evangelism; the members of the B. S. U. who are keeping alive the spirit of worship and devotion on the campus; the consecrated members of the faculty; the spirit of unity and Christian love that exists in the dormitories and that makes the problem of discipline practically non-existent—all these assured me that Central College is here to stay. It made me want to see it grow and help it gain its rightful place among Arkansas Baptists.

The location of Central College should make us proud to call it our own. The cool refreshing breeze and the lovely scenes of distant hills and valleys cannot but make one feel the wonders of the glory of God. The consciousness of what this site once was—a hospital area—is felt only by those on the outside. To the students and faculty it is Central College, and they are in love with it. They see, as no one else, the glorious possibilities of even a greater college. Pioneering with limited resources, but with the unlimited power of God, they are writing another page in the glorious history of Arkansas Baptists in the field of Christian education. Let us rise up to help them.

The members of the Woman's Missionary Society of Number Nine Church, Mississippi County, met on April 25 at the colored church and presented their Royal Service Program, and assisted in the organization of a W. M. S. for the colored women. Mrs. W. E. Rhoads is president of the Number Nine W. M. U., Mrs. Raymond Whittle, young people's director, and Mrs. Bob Stovall, secretary and treasurer.

The officers elected for the colored W. M. S. are as follows: Metria Sloan, president; Myrtle Dowd, first vice president; Julia Benson, second vice president; Ethel Rogers, secretary; Estell Smith, treasurer; Rosa Wroten, mission study chairman; Greta Wilburn, community missions chairman; and Rena Nixon, social committee chairman.

Pastor John T. Holston and the First Church, Clarendon, engaged in revival services April 3-10 with Dr. Roy Beaman, New Orleans Baptist Theological Seminary, doing the preaching and D. Wayne Zimmer, music student at the seminary and pastor's assistant at Rio Vista Baptist Church, New Orleans, leading the singing. There were 25 received into the church membership by baptism and eight by letter. In addition to the re-dedication of many of the people to the service of the Lord, one young man dedicated himself to the gospel ministry.

Pastor Carl P. Nelson and the First Church, Gentry, had the services of Evangelist John H. Osteen, Amarillo, Texas, and Singer D. D. Murray, Rogers, in a twelve-day evangelistic campaign which closed April 10. There were 59 additions to the church, 48 coming on profession of faith, ten by letter, and one by statement. A large number of persons re-dedicated their lives to the Lord's service.

The Mount Ida Church, D. B. Bledsoe, pastor, experienced a revival April 3-10 under the leadership of W. E. Speed, First Church, Russellville. Pastor Bledsoe says the greatest contributing factor was the all-night prayer meeting Saturday night preceding the beginning of the revival services Sunday. The prayer meeting lasted from 8:00 p. m. Saturday evening until Sunday School time the next morning and sixty-six people attended during the night and morning.

The results of the revival were twelve additions to the church by baptism, four by letter and statement. An all-time record was made in Training Union attendance the last night of the meeting, with 204 present.

The First Church, Van Buren, T. H. Jordan, pastor, reports a revival meeting April 3-17, in which the pastor did the preaching and Norman Ferguson, First Church, Fort Smith, led the singing. There were eleven additions by baptism, five by letter, and two by statement. A record-breaking attendance in Sunday School April 17, with 500 present and the auditorium and annex filled to capacity for the morning worship, was reported. There were 253 in Training Union on that day.

The First Church, Brinkley, H. L. Lipford, pastor, had the services of Dr. B. L. Bridges in a revival meeting April 3-17. Glenn Wood and James Pleitz, Ouachita College students, led the singing and directed the young people's work. There were 34 additions to the church, including 19 who came for baptism. One young man surrendered to preach and 15 young people dedicated their lives to the service of the Lord.

Missionary E. A. Ingram did the preaching in a revival at First Church, Benton, April 17-24. Henry Kelley conducted the music. There were 39 additions to the church membership, 29 of that number coming for baptism. There were ten other professions of faith who did not unite with the church. Virgil A. Rose is the pastor of First Church.

Evangelist W. J. Morris, Pine Bluff, preached in revival services at the Reyno Baptist Church, Current River Association, April 17-24. There were ten additions to the church by baptism and two by letter. The Reyno Church is without a pastor at present.

The Immanuel Church, Pine Bluff, closed a two weeks' revival April 1, with Dr. A. C. Baker, evangelist, doing the preaching, and S. W. Welch, minister of music and education, Boulevard Church, West Memphis, Arkansas, leading the singing. There were 48 professions of faith, eleven additions by letter, and many re-dedications. Paul Fox is pastor of Immanuel Church.



J. Wesley Hoover Jr.

The Rescue Baptist Church, White County Association, ordained its pastor, J. Wesley Hoover Jr., to the full gospel ministry Sunday afternoon, April 10. Mr. Hoover is a ministerial student at Southern Baptist College, Walnut Ridge.

The ordination council was composed of George Norman, Griffithville, moderator; Amos Greer, Kensett, preached the ordination sermon; L. C. Langley, Kensett, gave the charge to the candidate and to the church; L. McBride, Griffithville, offered the ordination prayer. J. W. Ray and Harley Harris, Searcy, were also members of the council.

Mr. Hoover has been serving as pastor of the Rescue Church since the first of this year. There have been nineteen professions of faith and three additions to the church by letter since that time. All departments of the Sunday School have showed considerable progress.

Pastor Roger A. Butler and the First Church, Bauxite, had the services of Dr. Alfred Carpenter, Secretary of Chaplain's Commission of the Home Mission Board, Atlanta, Georgia, in a revival meeting April 17-24. Arthur Nelson, Dallas, Texas, directed the singing.

There were 52 additions to the church by baptism, five by letter, and one by statement.

Pastor Butler says, "A far reaching spirit of re-dedication prevails throughout the church membership. A promising movement among the young people resulted in 28 dedications to full time Christian service, and one young woman definitely committed herself to the Foreign Mission call. Those who have labored long in this good church mark this as one of the most constructive and far reaching revivals in the history of the church."

The First Church, Strong, R. O. Ekrut, pastor, had the services of Glendon Grober and Kay Mansell, Ouachita College students in a week end Easter youth revival. Results were: eight professions of faith, two additions to the church by letter, and 31 re-dedications. All previous attendance records were broken on Easter Sunday with 180 in Sunday School and 67 in Training Union. Hugh Nelson, of Strong, assisted in the revival services.

Reaching one person at a time is the best way of reaching the whole world in time.

—The Baptist Student.

A. B. Pierce Resigns

Alton B. Pierce has resigned the pastorate of the First Church, Pine Bluff, to accept the call to the First Church, Kosciusko, Mississippi.

Mr. Pierce is a native Mississippian, graduate of Mississippi College and the Southern Seminary, Louisville. He has held pastorates in Mississippi at West Laurel, Crystal Springs, and New Albany. He was also the first secretary of the Mississippi Baptist Foundation.

Mr. Pierce was active in denominational work, a member of the Executive Board of the Arkansas Baptist State Convention, the Baptist Memorial Hospital Board, and chairman of the Steering and Planning Commission of the State Convention.

During his three-year pastorate at First Church, 654 new members have been added to the church membership, 431 of these coming by baptism; \$250,313 was raised for church purposes; \$63,366 designated for mission causes; \$96,000 added to the new auditorium fund; \$16,000 purchase of new church property; the Dew Drop Mission was begun, resulting in the organization of a new church; and three young men were licensed to preach.

Joe Shaver, native of Arkansas, student in Southwestern Seminary, Fort Worth, led the Fourth Baptist Church, St. Louis, in a revival meeting recently. Pastor Oliver O. Shank reports over 100 professions of faith, and eighteen received by letter or statement.

C. C. Ussery, pastor of Calvary Church, Texarkana, was the visiting preacher in a revival at the First Church, Bradley. Mark Short Sr., Arkadelphia, led the singing. Thirteen persons made professions of faith and seven joined the church by letter. Orlin M. Allen is pastor of the Bradley Church.

Lexa Church was one of twelve churches in Arkansas Valley Association to conduct a simultaneous revival beginning April 3. Jim High, pastor, states that the entire program of the church was strengthened, with record attendance of 160 in Sunday School and 180 in Training Union on the Sunday of the ten-day meeting. There were 31 additions to the church, and a number of re-dedications. Wesley A. Lindsey, Second Church, Monticello, conducted the meeting, with Mrs. J. W. Smith, Lexa, directing the music.

Dr. C. Y. Dossey, Dallas, Texas, Associate Superintendent of Evangelism of the Home Mission Board, was the director of a simultaneous revival campaign in Montgomery Baptist Association, Montgomery, Alabama, March 27-April 10.

Twenty-four churches participated in the simultaneous effort which resulted in 518 baptisms, 349 additions to the churches by letter, and thirteen by other methods of receiving members; there were fifteen decisions for special Christian service.

Plans are being made by the Melbourne Church to extend the native rock church building, making room for additional Sunday School class rooms, a fellowship hall, and a baptistry. Construction of the addition is scheduled to begin immediately.

Hugh Cooper is the pastor of Melbourne Church.

Recent News About Foreign Missions

Costa Rica Under Foreign Board

Baptist mission work in Costa Rica, an outgrowth of the work of the Home Mission Board in Panama, will be transferred to the Foreign Mission Board on May 1, 1949. Mr. and Mrs. Van Earl Hughes, missionaries serving in Costa Rica under the Home Board, were appointed in absentia by the Foreign Mission Board at its April 19 meeting when the transfer was approved.

This brings three of the Central American republics under the supervision of the Foreign Mission Board, the other two being Guatemala and Honduras. Mr. and Mrs. W. J. Webb, living in Guatemala City, are directing the work of these two republics.

Secretaries M. Theron Rankin and Everett Gill Jr. inspected the Costa Rican work while in Latin America early this year for the organization of the Colombian-Venezuelan Baptist Convention. The Home Mission Board suggested the transfer late last year after the work became too extensive to administer from the Panama mission.

Missionary Airplane In Brazil

A small "Piper super-cruiser" plane was purchased with Christmas offerings for the use of the Corrente mission station in North Brazil. Although other mission groups have been using planes for some time for work in Brazil as well as elsewhere, this is a first for Southern Baptists.

Interior Brazil has few highways and railroads. The plane will enable missionaries in this station to get supplies and mail in only a few hours where heretofore it has taken six days to make the trip out and six days back. When Mr. and Mrs. Elton Johnson transferred from Victoria to Corrente early in 1948 they went part way by slow river boat and then by jeep and horseback over trails they hacked out of the jungle. Read Mrs. Johnson's story of the trip in the May issue of *The Commission*, page 23.

Robert R. Standley, appointed at the April meeting of the Foreign Mission Board for work in North Brazil, is a licensed pilot. Another pilot, Lonnie Doyle, formerly in the armed forces with twenty-nine missions over Europe to his credit, was also appointed for Brazil. He will probably serve in the Amazon region.

New Foreign Missionaries

Twenty-eight new missionaries were appointed by the Foreign Mission Board at its April meeting:

To Africa—Miss Stella Austin of North Carolina and Dr. and Mrs. William Gaventa of Georgia and Tennessee, for Nigeria.

To Europe—Miss Virginia Wingo of Alabama for Italy.

To the Orient—Miss Hilda Bledsoe of Georgia, and Mr. and Mrs. Hubert Tatum of Georgia and Tennessee for Hawaii; Mr. and Mrs. E. L. Hollaway of Arkansas and Illinois, Miss Annie Hoover of Arkansas and Miss Lenora Hudson of Texas for Japan; Mr. and Mrs. William Walker of Kentucky and China, for China. Mrs. Walker is the daughter of Mr. and Mrs. C. L. Culpepper, missionaries to China.

To Latin America—Mr. and Mrs. Gordon Crocker of Tennessee for Colombia; Mr. and Mrs. Lonnie Doyle of Mississippi and Texas and Mr. and Mrs. Robert Standley of Ohio

and New York for North Brazil; Cecil Johnson of Oklahoma, Mr. and Mrs. Jack Matthews of Alabama and Florida, and Mr. and Mrs. Grayson Tenison of Texas for Latin American countries not designated; Mr. and Mrs. Van Earl Hughes of Texas for Costa Rica.

Foreign Board Elects Treasurer

Everett Deane, assistant treasurer of the Foreign Mission Board, was elected treasurer at the April meeting, his election to become effective when E. P. Buxton, treasurer since 1927, retires at the end of this year.

Mr. Deane, a native of Virginia, has served as assistant to Mr. Buxton since 1934, except for two years when he was in Navy service during the war. He came to the Board in 1930 as an assistant in the book department.

Seminary Project For Latin America

The Foreign Mission Board is reconsidering the whole question of theological education in Latin America with a view to establishing only four major institutions in that area, two in the Spanish-speaking part of the continent and two in Portuguese-speaking Brazil. Smaller institutions in other centers, supported mainly by the national constituency, will serve as Bible schools for students with less preparation.

Brazil already has two good seminaries with women's training schools, one at Recife in the north and the other at Rio de Janeiro in the south. Both are fairly well equipped now, except for the need of a new seminary building at Rio. Logical locations for the other two would be Buenos Aires, Argentina, where a seminary is already established, and Cali, Colombia, where property has been acquired for a seminary and other mission buildings.

March Receipts For Foreign Missions

March receipts of the Board totaled \$572,618, as compared with \$355,086 March last year. Receipts for the first three months this year are \$2,765,765; receipts for the first three months last year were \$2,371,055.

Treasurer E. P. Buxton reports a total of \$1,666,332 received through the Lottie Moon Christmas offering up to April 22.

Relief Offerings Are Down

The Foreign Mission Board voted to transfer \$100,000 from rehabilitation to relief funds in order to continue work with refugees and displaced persons in Europe. This action was taken following a report from Dr. George W. Sadler, chairman of the Relief Committee, that only about \$16,000 remained in the treasury of the committee and that receipts were falling too low to maintain the work.

Emeritus Missionary Dead

Mrs. John W. Lowe, emeritus missionary to China, died April 9 in Richmond. She and Dr. Lowe were in North China at the time of the Boxer Rebellion and through three famines. Dr. Lowe died May 6 last year.

Missionary Album

Do you have a Missionary Family Album? You may order it from the Foreign Mission Board, Box 5148, Richmond 20, Virginia. The price is \$2.00 a copy, or \$5.00 for three copies.

VISIT YOUR BAPTIST HOSPITAL ON MAY 8



There will be an Open House at the Arkansas Baptist Hospital, Sunday, May 8, 2:00 to 4:00 p. m., and the public is cordially invited.

Balloons and hats will be provided for the children, and a play party held on the lawn. Adults will be shown through parts of the hospital and allowed to participate in a program in the chapel.

NEW MATERNITY DEPARTMENT

Visitors will be conducted through the new Maternity Department, which has recently been remodeled, air-conditioned, and redecorated. The latest equipment has been purchased and placed in operation and the institution will be glad to present these facts to the public on that day.

KNOW YOUR—

Arkansas Baptist Hospital

13th and Wolfe

Little Rock, Arkansas

An Adventure In Christian Fellowship

FIRST BAPTIST CHURCH
Winston-Salem, North Carolina
"That ye also may have fellowship with us . . . with the Father, and with his son Jesus Christ . . . that our joy may be made full."
—1 John 1:3-4.

Who?
You and All New Members!
A Hearty Welcome

We are so glad you have joined our church. You have begun a new association with God's people. Let us covenant together to make it a mutual blessing.

Knowing the importance of A **GOOD BEGINNING** we take pleasure in introducing . . .

What?
Our New Member Fellowship
A series of gatherings designed to get you off to a good start in this new relationship.

Why?
To Acquaint You With . . .
The precious truths of God's Word which make for growth. The church and denomination of which you are now a member. The pastor and the people with whom you will be working.



**. . . to travel
by CROWN COACH**

No driving or parking worries. Crown's frequent, fast schedules take you where you want to go when you want to go . . . on long trips or short trips.

**. . . and SO EASY
on the Pocketbook**

OKLAHOMA CITY	\$ 7.40
FORT SMITH	\$ 3.50
KANSAS CITY	\$ 9.20

One Way Fares - Plus Tax

7 Daily Buses to Oklahoma City

A CROWN COACH BUS WILL
KEEP YOUR GROUP TOGETHER
AT THE OKLAHOMA CITY
CONVENTION.



Sixth and
Broadway
Phone 22226

**CROWN COACH
Lines**

The way to get started in the joys of active church membership

Where?

The Ladies Parlor . . .

Just across the hall to the rear of the auditorium, Room 205.

When?

Every Sunday Evening . . .

One hour before our regular worship service.

How?

Our Plan of Procedure . . .

Always informal in the free and happy atmosphere of a glad welcome. All ages together—the new members just as they come. Songs, prayers, discussions, talks, questions on things that puzzle you most, stories and pictures, testimonies, with never a dull moment.

Your participation in this New Member Fellowship may easily determine whether you will be just "another member" or a fruit-bearing Christian.

Topics For Discussion

1. The Church, Christ's Chosen Band.
2. This Church I Have Joined.
3. The Growing Christian.
4. The Holy Spirit Our Helper.
5. Our One Great Business.
6. Meeting Our Leaders.
7. Our Larger Fellowship.
8. Handling God's Money.
9. The People Called Baptists.
10. The Two Ordinances—Sacraments or Symbols.
11. Our Blessed Hope.
12. Where and How to Begin a Life of Service.

Please Note:

New members may enroll at the first of each quarter or (preferably) the first opportunity after joining. While this fellowship is primarily for them, visitors are always welcome. Notebooks will be supplied because there will be some facts you will want to preserve. Those who attend The Fellowship will be presented on "graduation" with a beautiful certificate signed by the pastor and the chairman of the deacons. But greater than any other recognition will be the inner satisfaction that you have taken the privilege of church membership seriously and opened your heart to the rich spiritual blessings that lie deeper than any nominal affiliation.

**New Member Fellowship
First Baptist Church
Winston-Salem, North
Carolina
MY CHURCH AND I**

Name _____

"Christ also loved the church and gave himself for it."—Ephesians 5:25.

The Clash With Religious Authority

By MRS. ROLAND LEATH

Sunday School Lesson

for May 8, 1949

Mark 11:27-33; 12:28-34

We are studying events and incidents of the last appearances of Jesus in His public ministry. In the lesson of May 1 Jesus declared His authority as the Son of God by means of the triumphal entry into Jerusalem, the cleansing of the Temple, and His subsequent teaching.

In these last days hatred and prejudice toward Jesus was deep and intense in the hearts and minds of His critics—so deep, in fact, that they sought to kill him. We found in lessons of past weeks that these enemies were, strangely, the religious leaders of the people. The Herodians, a political sect, banded with the religious groups of Pharisees and Sadducees, ignoring their private feuds, to unite against Jesus.

Four outstanding questions formed the clash which Jesus had with these rulers. They asked Him concerning His:

Authority

During the third visit of Jesus to the Temple during this week, a committee from the Sanhedrin came upon Jesus to ask, "By what authority doest thou these things? and who gave thee this authority?" The Sanhedrin consisted of 11 chief priests, elders, and scribes who, as an ecclesiastical court, decided all questions of public worship, feasts, and Scripture interpretation. They were indeed authority within the Temple, and as such had the right to ask this question, but they had a deeper, more sinister motive in questioning Jesus.

Mark said as Jesus "was walking in the temple there came to him the chief priests, and the scribes and the elders." Luke used the expression, "came upon Him." There is an indication that their appearance was sudden and hostile. In the light of that which Luke indicated, these Sanhedrin representatives demanded rather than questioned, when they sought an explanation of our Lord as to His authority.

The "things" about which they approached Jesus were the triumphal entry, with Jesus' acceptance of the homage paid Him, and the driving out of the money changers from the Temple by Jesus, followed by teaching which won the approval of the people.

Knowing the motives of their hearts, and always meeting men in the way His wisdom knew to be right, Jesus answered by asking them a question, "The baptism of John, was it from heaven, or from men?" Following His query, Jesus demanded of them, "Answer me!" If these men knew and accepted the mission of John the Baptist, surely they would ac-

cept the fact of the Sonship of Jesus. Discussing this question among themselves, the Sanhedrin Committee refused to acknowledge any opinion about the matter. They did not want to admit the possibility of this baptism being from God, and, because the people accepted John as a prophet and they feared the people, they refused to condemn themselves by saying it was from men. These elders, scribes, priests did not fear God, but men. When they would not answer Jesus, He had no answer for them.

When this group did not trap Jesus, certain Pharisees and Herodians attempted to trap Him as they questioned Him concerning:

Tribute

These two sects had nothing in common with one another, yet they came, asking this question of our Lord, in apparent harmony and sincerity. Their question was "Is it lawful to give tribute to Caesar, or not?"

"The reference is to a tax amounting to about a denarius per head, about one-fourth of a dollar, which had been levied by the Imperial Government upon the population of Judea ever since A. D. 6, when Archelaus, son of Herod the Great, was deposed for mis-government, and Idumaea, Samaria and Judea, became a province under a procurator."—Rawlinson. The tax was unpopular with the people, and those trying to ensnare Jesus thought if He said it was lawful to give tribute to Caesar, they would alienate Him from the people.

If Jesus said it was unlawful to pay the tax, these enemies would turn Him over to the government as an agitator, guilty of treason against Rome.

Asking for a coin, Jesus, in turn, questioned His enemies. "Whose is this image and superscription?" When they answered, "Caesar's," Jesus spoke words, now famous for all matters of civic responsibilities: "Render to Caesar the things that are Caesar's, and to God the things that are God's."

Failing with this assault, the Sadducees took their turn at Jesus with a question concerning:

Marriage In Heaven

The small, powerful, priestly party, called Sadducees, who glorified in the fact that they denied the immortality of the soul, came to ridicule Jesus, hoping to make of the resurrection an absurdity and to make Jesus appear in a bad light.

An ancient law held that if a man died, leaving no male descendants, his brother would marry his widow. These enemies asked Jesus a far-fetched question: If seven brothers married one woman, each dying and leaving a brother to marry the widow until all had married her and then died, whose wife would she be in the resurrection?

They did not believe in the resurrection and did not fully know Scripture or the power of God. Jesus proved that they did not know the truth of God, as He said, "For when they shall rise from the dead, they neither marry, nor are given in marriage." Jesus silenced His critics, but He did not convince them, as their bitter antipathy raged all the more against Him.

Some scribes listened to this discussion and one stepped forward, questioning Jesus concerning:

The First Commandment

This scribe perceived that Jesus answered them "well." Mark rather indicates that this scribe was impressed and asked Jesus a sincere, straightforward question. Matthew says he came, "tempting Jesus," seeming to reveal him as a proud expert who thought he could get the best of Jesus.

His question, "Which is the first commandment of all," is, at any rate, answered by Jesus with fairness. He quotes Deuteronomy 6:4, 5, which every Jew was bound to know and repeat in his devotions. This is the commandment which God gave that all relationships of life should be right. The Lord Jehovah is the only God and should be loved with all the being; as a result of that relationship, man must be right with his fellow man.

The scribe acknowledged the truth of Jesus' answer and Jesus, yearningly, said to him, "Thou art not far from the Kingdom of God!" The sheer tragedy of this scribe and all men who know the truth, yet do not go all the way to trust Christ! After that strange encounter, because of Jesus' evident wisdom and power, "No man . . . durst ask him any question."

Jesus Asks a Question

After Jesus had faced a battery of questioners, He asked His interrogators a vital question concerning the person of Christ: "How say the scribes that Christ is the Son of David? For David himself said by the Holy Ghost, the Lord said to my Lord, Sit thou on my right hand, till I make thine enemies thy footstool. David therefore himself calleth him Lord; and whence is he then his son?" (Mark 12:35-37). Jesus quoted a part of Psalms 110:1. David here in this Psalm calls the one to whom God spoke, "my Lord." If Messiah was to be David's son, why would he be called Lord? The answer in a concise truth would be: David's son would be not only of the line of David, but the very Son of God. Surely these scribes and Pharisees, Jews who knew the Scripture, could not help but see the revelation of the Sonship of Jesus Christ in this Psalm of David.

They would not believe. Matthew's gospel says "No one was able to answer him." He revealed Himself fully to them, but they could not grasp the truth. The answer to the question is the Deity and humanity of our Lord. He is David's Lord being God; He is David's Son being man."

From that day "durst any man ask him any more questions."

Truth silences critics.

GOWNS

• Pulpit and Choir •
Headquarters for
RELIGIOUS SUPPLIES






Church Furniture • Stoles
Embroideries • Vestments
Hangings • Communion
Sets • Altar Brass Goods

CATALOG ON REQUEST

National

CHURCH GOODS
SUPPLY COMPANY
821 - 23 ARCH STREET, PHILADELPHIA 7, PA.

Has everyone in your family a Bible that meets his needs?




Since 1863
National BIBLES
 Wherever Bibles are Sold

Make Plans to Attend

Mary Hardin-Baylor

Accredited Senior Liberal Arts College For Girls. Provides a program of educational, cultural, physical, and religious development.

First Summer Term Begins June 1
 Second Summer Term Begins July 13
 Fall Session Starts September 15.

GORDON G. SINGLETON, Ph.D.,
 President
 Box 400 Belton, Texas

Baptist Brotherhood of Arkansas

NELSON F. TULL, *State Secretary*

219 Baptist Building

Little Rock, Arkansas



We Are Planning for a Great Task!

The Baptist Brotherhood of the South has been asked by Dr. C. E. Matthews, superintendent of the Department of Evangelism of the Home Mission Board, to assume the responsibility of arranging a rally of Baptist men in every association west of the Mississippi River, in the early part of 1950, before the great Simultaneous Revival campaign is begun.

Remember that next year, beginning on April 9 and continuing through April 23, revivals will be held simultaneously in all churches west of the river! In 1951, the churches east of the river will go through a similar campaign.

Dr. Matthews is also asking that the State Brotherhood Departments work with church Brotherhoods to plan series of cottage prayer-meetings in every church field, immediately preceding the Simultaneous Revival campaign.

The State Brotherhood Secretaries have been asked by Lawson Cooke, secretary of the Baptist Brotherhood of the South, to plan the promotion of the above-named projects. Other departments of our work have also been asked to carry out particular tasks in preparation for what will be the greatest effort since Pentecost to win people to Christ.

Organize Your Associational Brotherhood Now!

In carrying out successfully the above projects, a functioning associational Brotherhood in every association is a prime necessity. In many of our associations Brotherhood presidents have been elected; but associational Brotherhood organizations have not always been completed. And without complete organization a Brotherhood is never in position to undertake a program of work.

An associational Brotherhood should have the following officers:

President, Program Vice President, Attendance Vice President, Promotion Vice President, Chorister, and Secretary-Treasurer.

Besides these officers an Advisory Committee of three pastors should be chosen.

In addition to the above, three church Brotherhood officers, presidents are suggested, should be elected to membership on the associational Brotherhood Executive Committee, which will include all Associational Brotherhood officers and the Advisory Council.

The Associational Brotherhood should meet regularly once each quarter in a great rally of Baptist men. Efforts should be made by the Attendance Vice President to get a good representation of men from each church in the association, whether all churches have church Brotherhoods or not. The Executive Committee should schedule its meeting one hour before the rally begins, to look carefully into every phase of the work, and to guide the whole course of the Brotherhood.

The Program Vice President will plan carefully to make the programs both informational and inspirational.

The Promotion Vice Presidents will endeavor to promote an activities program consisting mainly of the following continuing activities:

1. Stimulating the organization of a Brotherhood in every church of the association;
2. Lifting the level of efficiency of Brotherhood work throughout the association;
3. Enlisting men and churches in denominational projects;
4. Getting the Baptist manpower of the association thoroughly into the work of the Kingdom, the churches, and the denomination.

Organize your associational Brotherhood now! The Executive Board of the association should elect a president; a rally of Baptist men should be held and the organization completed. The Executive Brotherhood Committee then come together and schedule regular associational Brotherhood meetings, and also set up a program of activities designed to make the associational Brotherhood function as an effective instrument in all the work of the churches and of the association and denomination.

Women's Missionary Union

Auxiliary to Arkansas Baptist State Convention

209 Baptist Building, Little Rock

MRS. F. E. GOODBAR

President

MISS NANCY COOPER

Executive Secretary and Treasurer

Miss Doris DeVault Elected

State Young People's Secretary

Upon recommendation of the special Nominating Committee, Miss Elma Cobb, chairman, charged with the responsibility of finding a State Young People's Secretary, the Executive Board has elected Miss Doris DeVault to that position. She has accepted and will be on the field July 1.

Miss DeVault's preparation for this work is superior. Her father was a Baptist minister, and from early childhood she realized that God had a special plan for her life, and she made every preparation possible through practical service and through school. After graduating from Meredith College and the W. M. U. Training School, she did Associational W. M. U. field work in Tennessee and later went to Alabama to serve as Young People's Secretary.

To some the waiting has been long and difficult, but how wonderfully repaid we are as we anticipate the coming of this choice person to lead the young people of our state. Miss DeVault will be at home in Fall Branch, Tennessee, until she comes to take up her duties with us. In the meantime, she is already making many valuable suggestions and submitting plans for the summer camps, and other phases of the work.

Significant Opportunities at W. M. U. Annual Meeting In Oklahoma City

Sunday afternoon, 3:00 o'clock—speaker: Miss Margaret Applegarth.

Sunday night, 8:00 o'clock—speaker: Dr. Walter Judd.

There will be other impressive speakers, including missionaries and denominational leaders throughout the program. Sessions will begin at 9:30 a. m., 2:00 p. m., and 7:30 p. m. on Monday and Tuesday. Prayer services are being planned for 8:15 a. m. and 1:15 p. m. these two days.

All delegates must register, of course, and all visitors are cordially invited to register. Registration will open on Saturday, May 14, in Hotel Biltmore lobby from 1:00 p. m. to 10:00 p. m.; then the place to register will be changed to the Municipal Auditorium for Sunday afternoon, 1:00 p. m. to 10:00 p. m.; Monday, 8:00 a. m. to 10:00 p. m.; Tuesday 8:00 a. m. to 2:00 p. m. There will be no registration during program hours.

There are still a few vacancies in Arkansas' delegation. If two from your church have not as yet been elected to represent your Missionary Society, send your name to Miss Nancy Cooper, 209 Baptist Building, Little Rock. In the event the list of delegates is full, your name will be placed on the list of alternates to receive consideration in the event delegates cannot attend.

Go to the W. M. U. Meeting in Oklahoma City for renewing and enlarging your missionary zeal.

Behold the Sunbeams!

May 8-14 is Focus Week for Sunbeam Bands, and throughout the Southland attention of our churches will be turned on this very important group of pre-school and primary age children into whose hearts Woman's Missionary Union is striving to plant love and interest in missionary activity. Use this week to enlist, encourage, enliven zeal in and for this very important organization.

A very complete week of activities has been planned by Miss Margaret Bruce, and you will find her suggestions on pages 8-10 in the May issue of *World Comrades*. Follow them, or adapt them, or make your own plans to make your church Sunbeam conscious during the week May 8-14.

IMPORTANT DATES FOR THE SUMMER

Check Them

- June 16-22—Y. W. A. Camp, Ridgecrest, N. C.
- *June 27-July 2—G. A. Camp, Ravenden Springs.
- July 5-13—Assembly, Siloam Springs.
- July 5-13—Assembly, Ravenden Springs.
- *July 18-23—R. A. Camp, Ravenden Springs.
- July 18-23—Jr. G. A. Camp, Ferncliff.
- July 23-24—Y. W. A. House-party, Ferncliff.
- July 25-30—Int. G. A. Camp, Ferncliff.
- Aug. 1-6—Jr. R. A. Camp, Ferncliff.
- Aug. 4-10—W. M. U. Week, Ridgecrest, N. C.
- Aug. 8-13—Int. R. A. Camp, Ferncliff.
- *New dates.

GOWNS CHOIR • BAPTISMAL

ORDER FROM THE
BAPTIST BOOK STORE
SERVING YOUR STATE
OR ASSOCIATION



BENTLEY & SIMON
7 WEST 36 ST. NEW YORK 18, N.Y.

Religious Education

EDGAR WILLIAMSON, DIRECTOR

EDGAR WILLIAMSON
Sunday School Superintendent
RALPH W. DAVIS
Training Union Director
Baptist Building, Little Rock

T. D. McCULLOCH
Student Union Secretary
MRS. B. W. NININGER
Church Music Director
Baptist Building, Little Rock



Start a Sunday School Workers' Study Club In Your Church

Every day people read something. Why not help our workers to read something which will be of particular help spiritually and practically in the field of Sunday School work. In other words, why not add a feature to your regular program of training your workers which will mean spiritual growth and more effective service for more workers!

Here is an easy way for any worker to follow a regular plan of study and self-improvement in addition to other Training Course opportunities his church provides. He can study right at home! An average of 15 minutes each day would guarantee seven and a half hours each month—enough to complete one of the Sunday School Training Course books every month.

The chief idea of the club is to enlist as many Sunday School workers and prospective workers as possible in a systematic plan of individual study to supplement the regular training schools provided by the church. Some existing clubs arrange to study the same book individually and then before writing it up meet for fellowship and general discussion, thus receiving some benefits of group study. Certainly such a plan has tremendous possibilities.

Start a club in your church now! Attractive folders with all necessary instructions, together with an enrolment blank for each member may be had free of charge by writing Dr. Edgar Williamson, 212 Baptist Building, Little Rock. We feel that every church may greatly strengthen its Sunday School program by enlisting more workers in regular study.

Increased Enrolment for Increased Attendance

All pastors have been asked to fill out a card that was sent to them giving a report of the increase in Training Union enrolment during the month of April and the first Sunday in May. If you have not filled out the card and mailed it, please do so at once.

An increase in enrolment is absolutely necessary before we can expect an average increase in attendance. The following suggestions are given to increase Training Union enrolment in Arkansas:

First, Training Unions organized in churches that do not have Training Union work. This can be done by local Training Unions, missionaries and by associational Training Union organizations, and by any member of any church that will get the matter on his heart and get a Training Union started. Free literature will be provided for the first quarter for a new Training Union.

Second, additional unions in churches with Training Unions. In many instances, a new Junior, or Intermediate Union should be formed. Perhaps the one Junior Union has only a dozen in attendance, by forming two unions, one for the 9 and 10 year Juniors and one for the 11 and 12 year Juniors, the attendance can soon be doubled. Leadership should be selected before any new unions are formed. In many churches the Story Hour needs to be completely re-organized and departmentized. A large number of our Training Unions need an older young people's union, and a younger adult union.

Third, a definite program of visitation. Every union should have a list of church members who should be enlisted for the union. Members of the union should go after these people in a definite way, enroll them in the union, assign them to a group and a committee, give them a quarterly and let them know that they are expected to attend regularly, read their Bible readings, take part on the program, and make 100 per cent every Sunday on the eight point record system.

A gain of 8,577 in Training Union enrolment this year will bring Arkansas' enrolment to 60,000 by the close of 1949. In the fall of

the year when the church letters are filled out for the annual meeting of your association, every pastor and director should see that the complete Training Union information is given in the church letter.

Wall Chart Standards For the Sunday School Now Available

A copy of the new, attractive wall chart Standard of Excellence for the Sunday School has been mailed to every Sunday School Superintendent in Arkansas, whose name appears on our mailing list. Please post this Standard of Excellence in a conspicuous place, check up on all of the points right away to see if you are not ready now to make request for the standard recognition for your school. We believe a large number of schools are now standard, but have not yet applied for the recognition; others should be able to attain the Standard at an early date.

If, for some reason you failed to receive your copy of the new Standard of Excellence, or if an extra copy is needed, you may have it by writing your State Sunday School Superintendent, Dr. Edgar Williamson, 212 Baptist Building, Little Rock.

Figures To Inspire

Sunday, April 24, 1949

	S. S.	T. U.	Ad.
Ft. Smith, First	1244	478	10
Little Rock, Immanuel	1206	391	1
Including Missions	1688	630	4
El Dorado, First	957	252	12
Hot Springs, Second	903	217	50
N. Little Rock, Baring			
Cross	836	364	3
Including Mission	889	406	4
Little Rock, Second	822	203	8
Pine Bluff, First	799	218	
Benton, First	715	133	12
Russellville, First	632	226	2
Including Mission	681	249	
Pine Bluff, South Side	607	208	3
Including Mission	687	285	
Little Rock, Tabernacle	576	191	5
Fayetteville, First	563	227	1
Including Mission	615	262	
Magnolia, Central	545	143	
Including Missions	607		
Camden, First	542	142	
Including Missions	731	256	
Bauxite, First	517	189	17
McGehee, First	513	162	
Including Missions	612	212	
Hope, First	509	101	
Malvern, First	501	114	20
Including Mission	534		
Arkadelphia, First	491	175	
Pine Bluff, Immanuel	485	210	
Warren, First	485	106	2
Crossett, First	481	176	
El Dorado, Second	480	162	
Hot Springs, Central	479	148	18
Including Mission	580	192	20
Paragould, First	474	206	
Including Missions	655	271	
Paris, First	469	170	17
Hot Springs, Park			
Place	463	104	6
Fordyce, First	461	197	4
Lake City, First	457	246	14
N. Little Rock, First	457	120	
Including Mission	497		
West Helena	456	168	2
El Dorado, Immanuel	453	258	5
Including Mission	498	300	
Little Rock, Pulaski			
Heights	441		7
Springdale, First	423	266	4
Including Missions	601		
Little Rock, Gaines			
Street	418	220	4
Including Mission	509	261	
Conway, First	413	62	3
Ft. Smith, Immanuel	412	137	7
Ft. Smith, Grand			
Avenue	408	121	21
Ft. Smith, Calvary	390	88	
Stuttgart, First	376	201	4
Including Mission	429	233	
Siloam Springs, First	376	184	5
Smackover, First	371	150	1
Hot Springs, First	364	99	15
Little Rock, South			
Highland	355	142	1
Gentry, First	333	127	5
Norphlet, First	329	258	8
Jacksonville, First	329	215	67
Hamburg, First	327	127	
Rogers, First	316	77	10
Pine Bluff, Second	314	114	2
El Dorado, West Side	295	102	
Greenwood, First	280	115	7
Dumas, First	278	95	1
Including Missions	352		
Ft. Smith, Trinity	275	115	14
Mena, First	260	111	
Harrison, First	251	87	
Including Mission	372	117	
Stamp, First	242	106	
Ft. Smith, Bailey Hill	229	90	
DeQueen, First	227	65	1
Gurdon, Beech Street	218	49	3
Texarkana, Calvary	215	92	
Bentonville	215	56	1
Little Rock, Reynolds			
Memorial	201	60	
Trumann, First	188	64	4
Little Rock, Hebron	185	79	1
Judsonia, First	171	91	4
Hoxie, First	170	86	
Douglasville, First	168	81	6
Malvern, Shorewood			
Hills	168	58	
Dyess, Central	166	67	3
Warren, Immanuel	165	113	7
Mt. Ida, First	156	80	3
N. Little Rock,			
Pike Avenue	155	59	
Levy, First	150	71	5
Including Mission	191		
Little Rock, Capitol			
Hill	147	48	
N. Little Rock, Sylvan			
Hills, First	141	59	1
Kensett,	139	111	2
Sweet Home, Pine			
Grove	135	95	4
Hot Springs, Lake			
Hamilton	135	41	
Pine Bluff, Matthews			
Memorial	130	82	
Strong, First	124	55	
Ft. Smith, Temple	121	58	1
Dardanelle, First	120	27	2
Fountain Hill, First	117	87	
Melbourne	109	77	
Mena, Dallas Avenue	102	42	
Hot Springs, Walnut			
Valley	101	93	8
Crossett, North Crossett	101	69	
El Dorado, Parkview	92	43	
Grannis,	91	68	
Texarkana, Eastview	91	61	1
Wilmar	87	63	
Ft. Smith, North Side	82	35	1
Little Rock, West			
Side	81	50	1
Little Rock, Bethel	74		
Rogers, Pleasant Hill	71	49	
Little Rock, Bellevue	64		
Desha, First	59	52	
Monte Ne	58	42	2
Little Rock, Tyler			
Street	58	24	
Douglasville, Second	55	43	1
Conway, Brumley's			
Chapel	53	54	
N. Little Rock,			
Independent	47		
Little Rock, Liberty	37		

C M L S

What ?

Church Music Leadership School

C M L S

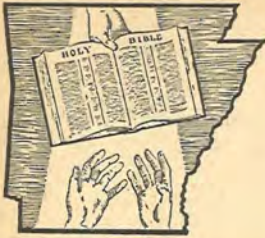
When ?

June 13-17

C M L S

Who ?

**Pastors
Directors
Organists
Pianists
Singers
Listeners**



Department of MISSIONS

C. W. Caldwell, Superintendent

Superintendent's Visits

With Harold Presley as my companion, I made a trip into North Central Arkansas last week. Gordon Napier, pastor at Hardy, had asked that I spend a few hours with him in discussing the building needs of his church. Two years ago I visited that church when they were pastorless and were averaging nineteen in Sunday School. I rejoiced in the progress the church had made. They have built a parsonage, greatly increased the attendance in all services, and plan to complete their church building this summer. Pastor Napier's doctor has advised him to rest for several months, so he plans to give up the Hardy Church soon. He has been serving full time on a salary of one hundred dollars per month. There are only about 40 resident members in the town of 1,000 population.

"The church will need help if they secure a pastor to live on the field," Pastor Napier said. But the forty-five churches being helped

now are consuming the \$12,000 allocated for pastoral aid. What can be done? Perhaps some of the churches which have been receiving aid for several months will resolve to become self-supporting and release the funds going to them for such churches as Hardy.

After leaving Hardy we visited Evening Shade where the Baptist work has folded up. Then we stopped in Sidney for a brief visit with Pastor Hal Gallop. His salary has been supplemented by mission funds. One of his churches is already self-supporting and the Sidney Church has built a beautiful native stone building. He is doing a great work.

Friday morning we went to Concord, about half way between Batesville and Heber Springs. A year ago I visited the Concord Church and talked with them about their building program. I was thrilled last Friday to see the building of tile brick going up. It is going to be a beautiful building. In a few years it will be one

of the finest rural churches in the state.

Another interesting visit was at Floral. We found Pastor Lee with several men and women on the church grounds with rakes, hoes, and axes, in a big "clean up." Their new building is now complete, furnished with beautiful pews. The Department of Missions gave some financial help on the building.

The past Sunday brought unique experiences. Sunday morning I supplied the pulpit of High Street Church, Little Rock. The house was filled and during the invitation fifteen people came forward, re-dedicating their lives to the Lord. Then Sunday evening I was in the Carthage Church which is affiliated with the missionary association. The mission film was shown to a large and appreciative congregation. They made an offering of \$25.83 for our mission work. They are a fine people and Brother Garland Murray is their beloved pastor.

Finances of Mission Dept.

During the first three months of 1949 the Department of Missions received from all sources, \$17,324.52. The total expenditures during those months was \$17,993.49. Twenty-five associations have received aid in paying their missionaries' salaries, and forty-five churches in paying their pastors' salaries. Financial aid has also

been given to six churches in their building programs. The five associations listed below show the order in which they stand in receiving aid on the missionary and pastors' salaries for the past three months:

Rocky Bayou Association	\$1,057.50
Newton County	1,020.00
Washington-Madison	610.00
Dardanelle-Russellville	487.00
Boone-Carroll	480.00

Other associations receive smaller amounts. Eleven associations have not received any financial aid from mission funds. The reason Rocky Bayou and Newton County Associations are above all others is because the entire salaries of the missionaries are paid by the Department of Missions. In addition, supplementary aid is given to a number of churches.

Mission Film Kept Busy

The film, "Pioneering for Christ," has certainly been busy during the past few weeks. It has been shown in Morrilton, England, Conway, Harmony Association, Mississippi County Association, and three Little Rock churches. If you want it in your church you should write soon for a date.

We also have a splendid color film with sound on the local mission stations of the churches in Greater Little Rock. Any church planning to sponsor a mission would receive great inspiration by seeing this film.

Mother's Day!

Your OPPORTUNITY
FOR MERCY TO
MANKIND...

REMEMBER—

Your church will be making an offering to the
Arkansas Baptist Hospital

MOTHER'S DAY OFFERING FUND



LET'S ERECT A MONUMENT OF KINDNESS TO MOTHER

QUARTERLY REPORT

Total Cash Contributions Received in Office of General Secretary of Executive Board, Arkansas Baptist State Convention, Little Rock—

DURING THE FIRST QUARTER OF 1949

(This Statement Does Not Include Receipts for Ministers Retirement Fund)

We are making the usual request that B. L. Bridges, secretary, 403 West Capitol Avenue, Little Rock, be notified of any errors that may be found in this report, in order that proper corrections may be made.

QUARTERLY REPORT

Church and Pastor	Undesignated Co-operative Program Contributions	Ouachita Campaign Designed Contributions	Other Designed Contributions			
ARKANSAS VALLEY ASSOCIATION						
Barton—J. B. Measel	\$ 22.00					
Beck's Memorial—J. B. Measel	29.62					
Brickeys—B. F. McDonald	20.00					
Brinkley—H. L. Lipford	435.00					
Clarendon—John Holston	132.06		119.00			
Corders Chapel—E. M. Bragdon						
Elaine—Bennie Pearson	730.20		3.00			
Friendship—E. G. Waddell						
Helena, First—Ralph Douglas	600.00	255.00	3.00			
Hickory Ridge—E. G. Waddell						
Hughes—W. D. Wallace	300.00		100.00			
Lexa—James High	120.00					
Marianna—Burton A. Miley	1,814.00	125.00	130.00			
Monroe—G. F. Smothers	17.02					
Moro—G. F. Smothers						
New Hope Mission—C. S. Ramseyer						
North Helena—J. F. Wilkerson						
Oneida—J. B. Measel	10.00					
Petty's Chapel—R. S. Wilson						
Rehobeth—J. B. Measel						
Turner—E. G. Waddell	16.00					
Twin Bridges—B. F. McDonald	66.21		12.50			
West Helena—Lehman F. Webb	975.00	250.00	274.20			
Miscellaneous	50.00					
TOTALS	\$ 5337.11	\$ 630.00	\$ 641.70			
BARTHOLOMEW ASSOCIATION						
Antioch—Orville McGuire						
Beech Creek						
Bethel—G. C. Corker						
Beulah						
Cominto—Ed Cloud	6.00					
Community						
Corinth "A"	9.00					
Corinth "B"—G. C. Corker	5.00					
Crossett, First—J. W. Buckner	1,400.00	275.00	18.00			
Eagle Lake, Cross Roads—Edward Persons	4.83					
Ebenezer—Orville McGuire	18.00	100.00				
Eden—Rolla Nixon	6.00					
Enon—Ed Cloud	24.78	6.41	27.01			
Fellowship—Q. M. Powell						
Florence	9.00					
Fountain Hill—Rolla Nixon	100.00		25.00			
Hamburg	1,400.00	500.00				
Holly Springs—W. L. Leach	45.00					
Warren, Immanuel—Keith Babb	132.00	30.00	46.67			
Jarvis Chapel—J. R. Pratt	15.00					
Judson—Rolla Nixon	2.50					
Ladelle—T. H. Berry	13.84					
Macedonia—Orville McGuire		62.00				
Magnolia—T. H. Berry	15.00		43.00			
Marsden—F. E. Canady						
Meridian—Dewey Brockwell						
Monticello, First—R. D. Washington	426.00	187.50	142.28			
Monticello, Second—W. A. Lindsey	205.39	7.00	4.00			
Mt. Olive No. 1—M. P. Timberlake						
Mt. Olive No. 2—S. E. Powell	75.00					
Mt. Zion—Edward Harris	17.50					
New Liberty—Keith Babb	6.00					
North Crossett—Harold White	100.60					
Monticello, Northside—J. T. Warbington						
Old Union—W. A. Lindsey						
Pattsville—T. T. Walker	12.50		8.50			
Pleasant Grove—Keith Babb	10.00					
Prairie Grove—G. C. Corker	5.00					
Saline—Richard Johnson	6.00					
Sardis—M. P. Timberlake	9.00					
Selma	41.17					
Shiloh						
Union Hill—T. T. Walker	15.00		31.00			
Unity—J. R. Pratt	22.02					
Warren, First—D. Blake Westmoreland	1,000.00	250.00	38.39			
Wilmar—Earl Ferrell	100.00					
TOTALS	\$ 5,257.19	\$ 1,417.91	\$ 383.85			
BENTON COUNTY ASSOCIATION						
Bentonville—James Overton	195.00	52.00	26.00			
Centerton—Melvin Coffelt	61.12		3.00			
Decatur—John V. Terry	210.76					
Garfield	5.00		25.15			
Gentry—Carl P. Nelson	213.43		139.30			
Gravette—Edgar Harvey	83.50					
Gum Springs	40.00		12.00			
Highfill	50.25		1.58			
Rogers, Immanuel—C. Frank Pitts	100.02					
BIG CREEK ASSOCIATION						
Enterprise—C. W. Tapley	10.00					5.00
Flora—C. W. Tapley						
Gum Springs—J. W. Shields	1.00					
Hardy—John E. Hornells						
Mammoth Spring—Alphus Capps	66.00					
Mt. Calm—J. W. Shields						
Mt. Zion—J. W. Shields						
Salem—Tom Poole	90.00					
Shady Grove						
Spring River—Ben Meeks						
Viola—J. M. Langston						
TOTALS	\$ 2,009.38				\$ 289.20	\$ 332.76
BLACK RIVER ASSOCIATION						
Airport Chapel—H. L. Waters	80.00					
Alicia—Leonard Kaffka						
Black Rock—Chas. D. Tibbels	25.00					
Clear Springs						
Clover Bend—Chas. Gray	2.00					
College City—H. L. Waters	50.00					
Diaz—L. B. Edwards	59.05					
Grubbs—Walter L. Phillips						
Horseshoe—W. A. Mink						
Hoxie—J. V. Chandler	30.00					
Imboden—J. C. Wickes	22.50					65.00
Jacksonport	5.00					
New Hope No. 1—W. L. Pepper	24.84					
New Hope No. 2						
Newport, First—Chas. F. Wilkins	150.00					3.50
Old Walnut Ridge—John McCollum						
Ravenden—Geo. McGehey						
Sanders—Thomas Ray	3.00					
Sedgwick—J. T. Tippit	10.00					
Smithville—L. W. McReynolds	28.40					13.19
Swifton—J. C. Wickes						
Tuckerman—Ray B. Rhyne	182.00					91.75
Walnut Ridge—Seibert Haley	200.00					13.00
TOTALS	\$ 871.79					\$ 186.44
BOONE-CARROLL ASSOCIATION						
Alpena Pass—D. M. Krels	60.00					
Batavia—G. E. Lafferty	15.00					11.16
Rear Creek Springs—Perry Fitchue	62.52					
Bellefonte—Guy A. Hopper	15.00					
Rerryville—Gray Evans	67.50					6.00
Blue Eye	15.00					
Burlington—Loy Moody	17.91					
Denver—Perry Fitchue	15.00					
Fureka Springs—Glenn Womack	60.26					
Gaither—Truman Logan						
Grandview	25.00					
Green Forrest—Art Jones						
Grubb Springs—Guy A. Hopper	18.00					
Harrison, First—E. E. Griever	629.74	1,300.00				9.00
Hopewell—Loy Moody						
Lead Hill—E. C. King						
Mt. Zion—G. E. Lafferty						
New Hope—E. F. Cox	45.50					
Oak Grove						
Omaha—Floyd Kolb						
Oregon Flat—Kenneth Threet	4.00					
Rock Springs—Dan Chamolin	21.75					
Shady Grove—A. J. Duncan	5.00					
Union	7.50					
Valley Springs—Guy A. Hopper	20.00					
White Oak—Troy Eoff	20.00	50.00				
TOTALS	\$ 1,124.68	1,350.00				26.16
BUCKNER ASSOCIATION						
Abbott—O. N. Wehunt						
Bates—Eugene M. Greenfield	3.00					
Cauthron—Harmon Allen	10.00					
Cedar Creek—Bill Smith	10.00					
Clark's Chapel	7.00					
Dayton	10.50					
Denton—W. R. Martin						4.68
Fellowship—James Pleitz	8.00					3.72
Forester—J. E. Evans	30.00					
Friendship—John Staggs	14.00					
Hartford—L. P. Thomas	15.00					
Haw Creek—Eugene Greenfield	15.96					23.53
Hon—Harmon Allen						
Huntington—Larry O'Kelley						
Ione—Lewis McClendon	9.00					

QUARTERLY REPORT

(CONTINUED FROM PAGE ELEVEN)

Church and Pastor	Undesignated Co-operative Program Contributions	Ouachita Campaign Designated Contributions	Other Designated Contributions
James Fork—Eugene M. Greenfield			
Lucas—W. W. Kersh	5.00		
Mansfield—Karl McClendon	285.38		
Midland—Harold Plunkett	13.48		26.96
Mt. Gilead—John Staggs			
Mt. View			
New Home—John Staggs	2.00		
New Providence—Bill Smith			
Parks—W. W. Kersh	19.57		2.57
Pilot View			
Piney			
Pleasant Grove No. 2—Harmon Allen			
Pleasant Grove No. 3—Harmon Allen			
Poteau—Harmon Allen	11.17		
Rock Creek	38.68		
Salem No. 2			
Shiloh—John Staggs			
Union Hope—T. M. Finney	6.00		
Unity—John Staggs	2.00		
Waldron—Vernon E. Yarborough	419.09		15.00
West Harmony—Will Stone	4.00		
West Hartford—J. E. Evans	50.04		
TOTALS	\$ 988.87		76.46
BUCKVILLE ASSOCIATION			
Buckville—Joe Anderson	20.00		
Cedar Glades—Laborn Sharp			
Little Country Church			
Mt. Tabor—Laborn Sharp			
Mt. Valley—Louis Dodd			
Onyx—Bert Bashaw			
Prairie Grove			
Rock Springs—T. L. Dozier	12.50		
Sweet Home			
Steve—Bert Bashaw			
TOTALS	\$ 32.50		
CADDO RIVER ASSOCIATION			
Amity—W. B. Essman			
Black Springs	15.00		
Caddo Gap	15.00		
Concord—J. P. Emery	5.40		
Glenwood—Chas. Hampton	75.00		4.00
Liberty			
Little Hope—Carlos Jones			
Lower Big Fork—James H. Miller	4.00		
Mt. Gilead—C. P. Cowart			
Mt. Home			
Mt. Ida—D. B. Bledsoe	50.00	15.00	
Norman—C. P. Cowart	84.50		
Oak Grove			
Oden—Paul Shipman	15.00		
Pine Ridge—James Benham	1.00		
Pleasant Valley			
Refuge—J. P. Emery	12.00		
Sulphur Springs—Chas. Bowen	6.00		3.00
Washita	3.00		
TOTALS	\$ 285.90	15.00	7.00
CAREY ASSOCIATION			
Bearden—Edgar Griffin	137.98		
Dalark	8.00		
Fordyce—J. T. Elliff	3,951.70	466.66	37.00
Hampton—Raymond Marks	85.42		1.00
Harmony—Russell Hunt	3.00		
Holly Springs—A. P. Elliff			
Manning—A. L. Puckett	39.00		
New Hope—Roy Hilton	7.00		
Ouachita—Sammy Pace	30.00		
Prosperity—Wallace Denton	6.00		
Shady Grove—A. L. Puckett	10.00		
Sparkman, First—C. H. Seaton	275.00		30.00
Thornton—Russell Hunt	39.06		
Tinsman—Wallace Denton			
Tulip—A. P. Elliff			
TOTALS	\$ 4,592.16	466.66	68.00

CAROLINE ASSOCIATION			
Austin Station—Van Griffin	9.00		24.70
Baugh Chapel—Troy Carroll	25.00		
Biscoe—T. W. Dove	30.00		
Brownsville			
Cabot	225.00		259.88
Caney Creek—E. Rawlings	33.00		
Carlisle—Guy Magee	300.00	75.00	83.04
Chambers	3.00		
Coy—H. H. Coble	4.80		
Des Arc—Ernest Baker	70.00		20.90
DeValls Bluff—L. P. Kimmell	20.00		
England—Luther Dorsey	300.00	150.00	142.75
Hazen—C. R. McCollum	50.00		20.00
Lonoke—W. M. Pratt	706.08		
Mt. Carmel—Van Griffin	18.00		
New Hope—C. H. Dunaway	10.00		
Oak Grove—E. J. Tankersley	25.00		
Old Austin—W. D. Kilpatrick			
Pleasant Hill	30.00		
Pleasant Valley—Paul Pearson	6.00		
Steel Bridge—Arthur Howard	6.00		
Toltec—J. T. Cravens	18.00		
Ward—J. O. Miller	25.00		
Wattensaw—H. B. Todd	20.00		
TOTALS	\$ 1,933.88	225.00	551.27

CENTENNIAL ASSOCIATION			
Almyra—D. O. Stuckey	375.00	412.50	114.00
Bethel			
DeWitt	325.00		323.00
DeWitt, East Side—L. E. Ross	20.00		12.50
Hagler—C. R. Cooper	57.11	700.00	
Humphrey—R. D. Harris	25.00		
Reydel			
Stuttgart—Walter N. Hill	999.27		166.90
Tichnor	15.00		12.68
TOTALS	\$ 1,816.38	1,112.50	629.08

CENTRAL ASSOCIATION			
Antioch	30.00		
Bauxite—R. A. Butler	512.93	100.00	4.64
Benton—Virgil A. Rose	1,510.00		375.00
Bethel			
Hot Springs, Central—Clyde Hart	1,200.00		
Gravel Hill—J. C. Hughes	15.00		3.50
Gum Springs—John Byrd	6.00		
Harvey's Chapel—Raymond Crotts	30.00		
Hot Springs, First—John Dodge	600.00	325.00	227.25
Hot Springs, Second—O. L. Bayless	450.00	375.00	
Jessleville	15.00		
Lake Hamilton—Delbert Garrett	109.65		
Lonsdale			
Malvern, First—T. K. Rucker	1,000.00		213.00
Malvern, Third—William Kersh	137.00		8.00
Memorial—Joe Melton	19.50		
Mill Creek—S. A. Wiles			
Mountain Pine	20.00		2.00
Mt. Vernon—F. W. Cate	10.00		
Mountain View	25.00		
North Fork—J. C. Hughes	2.00		
Owensville	18.00		
Hot Springs, Park Place—D. C. Bandy	1,050.00	75.00	37.25
Perla			
Piney—Edward Anderson	30.00	21.50	
Pleasant Hill	120.00		50.00
Shorewood Hills—Joe Mefford	87.43		
Union—Reeves Wright			
Walnut Valley—Ed Vallowe	30.00		
Miscellaneous			7.50
TOTALS	\$ 7,027.51	896.50	928.14

CLEAR CREEK ASSOCIATION			
Allx			
Alma—L. E. Cunningham	398.55		17.86
Altus			
Cedarville—O. Corhan			
Clarksville—W. L. Yeldell	150.00		
Coal Hill—Johnnie Alred	24.00		21.50
Concord—H. G. McNutt	15.00		22.85
Dyer—G. L. Lonsbury			
Forrest Mission—Claud Smith	11.98		
Hagarville—E. H. Miller			
Mountain Top			
Mulberry—Carl Willis	88.26		26.93
Oak Grove—A. D. Kent	12.50		
Oakland			
Ozark—J. B. Maxwell	492.35		3.00
Ozone—F. D. Panton	20.00		
Rudy—H. J. Morris	4.05		
Shady Grove			
Shibley—W. T. Rogers	3.00		
Spadra—H. K. Williams			
Sweet Home, Kibler—H. G. Milam	53.49		
Trinity (Crawford Co.)—H. J. Morris	9.93		
Trinity (Johnson Co.)—Pat Shields			
Union Grove—H. K. Williams	12.00		17.00
Uniontown—Jimmy Kent	2.00		
Van Buren, First—T. H. Jordan	550.00	315.00	12.00
Webb City—Irving Crossland	15.00		8.11
White Oak—E. H. McAllister	4.00		
Zoar—L. H. Harvell	5.38		
TOTALS	\$ 1,871.49	315.00	129.25

CONCORD ASSOCIATION			
Bailey Hill—A. G. Escott	200.00		
Barber—Frank Cleveland			
Bloomer			40.51
Booneville—W. W. Grafton	780.00	5.00	16.81
Branch—S. C. Simpson			25.00
Calvary—L. H. Davis	1,251.51	83.33	22.00
Charleston—C. H. Jones	150.00		
Excelsior	9.00		7.00
Fort Smith, First—B. V. Ferguson	3,000.00	750.00	2,138.00
Glendale—Houston Grayson			
Grand Avenue—J. Earl Bryant	300.00		69.67
Greenwood—Geo. Hink	339.13		31.89
Hackett—E. H. McAllister			10.00
Ft. Smith, Immanuel—B. B. Sawyer	1,264.74		33.00
Lavaca—O. M. Stallings	150.00		31.62
Magazine—L. A. Thompson	41.00		6.00

(CONTINUED ON PAGE 13)

Broadway Plan



Church Finance

Build Churches with Broadway Plan Bonds.
Use your own invested money for building.
Yield 5% interest, payable semiannually.
 (Five Arkansas Baptist Churches Using Them)
Backed by Interest and Sinking Fund Account.
Over 15,000 issued during a period of 13 years.
Never a default or any delay in payment.
Don't buy unless bonds bear above symbol.
Safe, profitable investment for savings accounts.
 Address Inquiries to: **BROADWAY PLAN**, 1408 Sterling Building,
 Houston, Texas, for information on churches having bonds
 available.

QUARTERLY REPORT

(CONTINUED FROM PAGE TWELVE)

Church and Pastor	Undesignated Co-operative Program Contributions	Ouachita Campaign Designated Contributions	Other Designated Contributions
Mill Creek—H. E. Marsh	10.62	—	11.00
Mixon—Houston Grayson	—	—	—
Mt. Zion	—	—	—
North Side—Ben Worley	18.30	—	—
Paris—Don Hook	800.65	187.50	75.00
Ratcliff—E. C. Egbert	—	—	—
Rye Hill—L. L. Gilliam	30.00	—	—
Ft. Smith, South Side—Victor H. Coffman	431.77	25.00	—
Temple—W. A. Crow	189.08	—	4.00
Trinity—P. J. Crowder	227.97	—	—
Union Hall—Frank Cleveland	—	—	—
Vesta	—	—	—
TOTALS	\$ 9,193.77	\$ 1,050.83	\$ 2,521.50

CONWAY-PERRY ASSOCIATION

Bigelow—Marion S. Boyd	15.00	—	—
Casa—B. L. Dorman	17.20	—	—
Harmony—H. D. Palmer	—	—	—
Houston—Perry Corder	1.00	—	—
Morrilton—C. D. Sallee	842.32	—	—
Perry—C. E. Bull	15.00	—	—
Perryville—E. S. Ray	60.00	—	—
Pleasant Grove—C. E. Bull	9.00	—	—
Thornburg—Perry Corder	15.00	—	—
Union Valley—Perry Corder	15.00	—	—
TOTALS	\$ 989.52	—	—

CURRENT RIVER ASSOCIATION

Bethany—Earnest Brown	—	—	—
Biggers—Howard King	25.00	—	—
Columbia—Jarrett—Carl Huddleston	6.00	—	6.00
Corning—L. C. Tedford	180.00	—	—
Dell—J. R. Oglesby	—	—	—
Hopewell—C. F. Gwinup	37.50	—	—
Moark—D. C. Applegate	—	—	—
Mt. Pleasant—A. W. Whidby	—	—	3.48
New Home	10.00	—	—
Oak Grove—L. E. Steely	12.00	—	—
Pocahontas—W. H. Hunt	120.00	—	—
Ravenden Springs—T. E. Holmes	—	—	—
Reyno	6.00	—	22.00
Shiloh (Clay County)—Geo. Monroe	—	—	—
Shiloh (Randolph Co.)—C. L. Davis	—	—	—
Success—J. F. Bow	20.00	—	—
Witts Chapel	9.00	—	—
TOTALS	\$ 425.50	—	\$ 31.48

DARDANELLE-RUSSELLVILLE ASSOCIATION

Atkins—Nelson Greenleaf	182.13	145.94	—
Bakers Chapel—Virgil Logan	—	—	—
Bluffton—Ralph Wilson	45.47	—	—
Centerville	—	—	—
Danville—John A. Freeman	—	—	—
Dardanelle—Sidney Oxendine	348.62	52.00	12.25
Dover—Virgil Logan	32.00	—	90.91
East Point	—	—	5.00
Flat Rock—Don Roy Hankins	—	—	—
Havana—George Findley	3.00	—	—
Hopewell	—	—	—
John Grace Memorial—George Findley	5.00	—	—
Knoxville—D. W. Alderson	23.91	11.95	—
London	—	—	—
Moreland	—	—	—
Mountain Springs	—	—	—
Mt. Vernon—Ralph Wilson	—	—	—
New Hope—W. N. Simms	21.75	—	—
Ola	9.00	—	—
Piney—Sid Gotcher	—	—	—
Pittsburg—Don Roy Hankins	14.00	4.00	—
Plainview	20.00	—	—
Pleasant Hill	—	—	—
Plumerville—Meredith Wilfong	49.95	—	9.23
Pottsville	5.00	10.00	—
Russellville—W. E. Speed	915.00	307.59	10.00
Whitley	—	—	—
TOTALS	\$ 1,674.83	\$ 531.48	\$ 127.39

DELTA ASSOCIATION

Arkansas City—H. J. Adkins	91.00	—	6.00
Aulds—Jim Matthews	—	—	—
Bellaire—J. S. Wright	60.00	—	62.00
Bethel—J. M. Divine	—	—	—
Boydell—T. J. Barnes	—	—	—
Central—Claud Hughes	10.00	—	—
Chicot	—	—	—
Collins—J. L. Stone	—	—	—
Crooked Bayou	—	—	—
Daniels Chapel—J. Fred Wesner	9.00	325.00	—
Dermott—E. F. McDonald	573.00	—	18.00
Eudora—Clarence Cutrell	1,628.94	—	—
Gaines—G. O. Douglas	—	—	—
Halley	—	—	—
Jennie—R. L. Blackwell	27.66	—	—

CHURCH FURNITURE

Pews, Opera Chairs, Folding Chairs, Pulpit Furniture
Sunday School Furniture

Quotations Without Obligation

L. L. SAMS & SONS

905 South 5th Street, Waco, Texas

Kelso—Lawrence Ferrell	—	—	—
Lake Village—H. O. Malone	775.00	75.00	63.20
McArthur	—	—	—
McGehee—Theo. T. James	1,320.40	200.00	92.00
Midway—G. O. Douglas	—	—	—
Montrose—Clyde E. Parrish	28.30	—	—
Mt. Pleasant—Dillard Miller	50.00	30.00	—
New Hope—L. J. Ready	30.00	—	6.18
New Liberty—C. E. Matthews	—	—	—
Oak Grove	—	—	—
Omega—H. C. Rash	—	—	—
Parkdale—Claud Hughes	36.00	—	—
Portland	179.66	—	—
Richland—J. C. Higgenbotham	—	—	—
Ryecraft—Jim Matthews	—	—	—
Tillar—Dale Taylor	100.00	200.00	40.00
Watson	52.41	—	—
Wilnot—Dillard S. Miller	212.07	—	—
Bayou Mason	—	—	—
Macon Lake	—	—	—
TOTALS	\$ 5,183.44	\$ 830.00	\$ 287.38

FAULKNER COUNTY ASSOCIATION

Bee Branch—E. F. Simmons	15.00	—	—
Beryl—P. E. Turner	60.00	—	—
Bono—Daniel Taulbee	5.00	—	—
Brumley's Chapel—James D. Reed	12.00	—	—
Cadron Ridge—Daniel Taulbee	12.00	—	—
Conway, First—Othar Smith	1,421.00	150.00	34.00
Conway, Second—Chester Ware	222.00	150.00	75.65
Emmanuel—Glen Wright	—	—	—
Formosa	—	—	—
Friendship—Roy Maddox	—	—	—
Happy Hollow—T. W. Hayes	7.50	—	—
Holland—Don Jones	6.00	—	—
Lone Star	9.00	—	—
Mayflower—F. D. Hubbs	15.00	—	—
Mt. Vernon	45.00	—	—
Naylor	—	—	—
New Bethel—Chas. W. Mason	—	—	—
Oak Bowery	17.91	—	—
Pickles Gap—T. W. Hayes	30.00	—	—
Pleasant Grove—P. E. Turner	36.00	—	—
South Side—T. W. Hayes	30.00	—	—
Union Hill	20.00	—	—
Wooster	35.00	—	25.00
TOTALS	\$ 1,998.41	\$ 300.00	\$ 134.65

GAINESVILLE ASSOCIATION

Austin—Tom Arnold	12.50	—	—
Brown's Chapel—A. W. Whidby	—	—	—
Greenway—S. R. Pillow	7.00	—	—
Harmony—Fred Lewis	—	—	—
Leonard—Virgil Tarvin	15.00	—	—
New Hope—Howard King	11.00	—	50.00
Nimmons—E. W. Gray	33.00	—	—
Nutt's Chapel—Tom Arnold	25.00	—	—
Peach Orchard—W. D. Palmer	—	—	10.00
Piggott—J. O. Young	354.42	—	—
Pollard—Fred Lewis	—	—	—
Rector—E. C. Polk	180.00	—	—
St. Francis—Chas. Holland	40.00	—	—
Tipperary—Fred Lewis	3.00	—	—
TOTALS	\$ 680.92	—	60.00

GREENE COUNTY ASSOCIATION

Alexander	60.00	—	—
Beech Grove—Donald Campbell	—	—	—
Bethel Station	—	—	—
Big Creek	6.00	—	—
Brighton—Jay Garland	—	—	—
Brown's Chapel—Tommie Henson	75.00	—	—
Cache Valley—A. C. Rudloff	30.00	—	—
Center Hill—J. H. Hughes	8.00	—	—
Childress Chapel—J. O. Miles	75.00	—	50.00
Delaplaine	—	—	12.50

(CONTINUED ON PAGE 14)

LET WELL PEOPLE, NOT THE SICK, DO OUR
CHARITY WORK AT

THE BAPTIST STATE HOSPITAL

Remember "Mother's Day" Is the Day Arkansas Baptists
Are Asked to Take a Special Offering for Charity Work
To Be Done At Our Hospital.

LET THE WELL PEOPLE SPEAK AND GIVE

We need your help at the Orphanage all through the year, and many have responded beautifully, but at this time let us join hands and help our Hospital do the charity work we want them to do.

This advertisement paid for by Bottoms Baptist Orphanage as an expression of good will and an example of Arkansas Baptists working together.

HAROLD C. SEEFELDT, Superintendent

QUARTERLY REPORT

(CONTINUED FROM PAGE THIRTEEN)

Church and Pastor	Undesignated Co-operative Program Con- tributions	Ouachita Campaign Designated Contributions	Other Designated Contributions
Paragould, East Side—Jeff Rousseau	207.91		6.00
Eight Mile			
Epsaba			
Fairview			
Lafe			
Liberty—John E. Hooker	40.00		
Marmaduke—C. E. Robertson	142.24	71.12	15.60
Mounds	11.50		
Mt. Hebron	25.00		
New Friendship—Charles Watkins	60.00		10.00
New Hope			
New Liberty			
Paragould, First—D. C. Applegate Jr.	2,008.73	150.00	285.44
Pleasant Grove—R. P. Woodridge			
Pleasant Hill	15.00		
Pleasant Valley			
Robb's Chapel—A. B. Jordan	25.00		
Rock Hill	6.00		
Spring Grove—Neal May			3.75
Stanford—J. O. Miles	60.00		
Unity—D. C. Applegate	17.50		
Village—L. W. McReynolds	16.80		6.00
Vines Chapel			
Walcott	77.48		18.00
Wall's Chapel—Arnon Woods	5.00		
TOTALS	\$ 2,972.16	\$ 221.12	\$ 407.29
HARMONY ASSOCIATION			
Alzheimer—Ralph Glover	30.00		14.60
Anderson Chapel—J. F. Brown	12.00		14.37
Bogy Chapel			
Calvary—E. W. Johnson	150.00		12.62
Central—T. L. Graves	57.30		
Crigler			
Dumas, First—T. N. Shaddox	600.00		
Gideon	3.75		
Gould—C. S. Womack	60.00		45.00
Greenlee Memorial—Phil J. Beach	54.70		
Hardin			
Harmony—Clyde M. Cutrell	9.00		
Hickory Grove			
Pine Bluff, Immanuel—Paul Fox	960.00		9.06
Kingsland			
Lee Memorial—Hugh Owen	225.00		
Matthews Memorial—L. G. Whitehorn	178.71		
New Bethel—J. F. Brown			3.00
Oak Grove—T. S. Cowden	15.00		3.00
Pine Bluff, First—A. B. Pierce	3,250.43	890.00	154.20
Pine Bluff, Second—D. C. McAtee	812.50	170.00	3.00
Plainview—G. E. Nethercutt	60.00		
Plum Bayou—A. W. Upchurch	40.00		
Rankin's Chapel—J. F. Brown			
Rison—T. T. Newton	173.00		1.00
Pine Bluff, South Side—L. A. Sparkman	1,275.00	114.99	79.38
Star City	904.99	181.01	87.00
Tyro			
Wabbaseka—R. E. Branum	5.00		
Pine Bluff, West Side—A. H. Mullins			
White Sulphur Springs	51.00		
Yorktown	40.00		
TOTALS	\$ 8,967.38	\$ 1,356.00	423.23
HOPE ASSOCIATION			
Anderson Union—Dexter Blevins	6.00		1.00
Arabella Heights—Kenneth Wilkinson	15.00		10.25
Texarkana, Beech Street—James G. Harris	2,500.00	101.50	46.25
Boyd			
Bradley	130.00		
Texarkana, Calvary—C. C. Ussery	112.00	50.00	9.00
Canal			8.26
Canfield	25.54		
Maenolia, Central—L. L. Hunnicutt	1,000.00		100.00
College Hill—C. G. Davis	300.00		30.00
Doddridge—A. L. Taylor	60.00		
Eastview—Charles A. Maule	24.50		
Evergreen			
Fouke—Howard Wilson	159.92		
Garland—A. W. Wagnon			
Genoa—Leo Hughes	40.00	25.00	
Guernsey—Sid A. White			
Haley Lake			
Harmony Grove	15.00		10.00
Hope—S. A. Whitlow	1,875.00	356.25	2.00
Lewisville—J. W. Royal	395.33		
Macedonia No. 1			
Macedonia No. 2—J. W. Hall			
Mandeville—Claude S. Carlton			
Mt. Zion	18.00		
Piney Grove—Chas. C. Bowen	29.45		
Pisgah—Stewart Kersey	23.93		
Red River—A. W. Wagnon	18.00		
Rocky Mound—Frank R. Eaton	6.00		
Shiloh—Geo. DeLaughter	60.00		
South Texarkana—Horace Grigson			
Spring Hill—Preston Taylor			16.50
Stamps—Waif Hamilton	375.00	300.00	533.00
Sylverino—Horace Grigson	16.54		
Tennessee—J. C. Crabb	41.59		
Trinity—Warren Nutt	65.21		3.00
Trov—Frank R. Eaton			
Fulton—S. A. Whitlow	186.49		
Mexican Mission—Henry L. Keahey		10.00	
TOTALS	\$ 7,498.50	\$ 842.75	\$ 769.26
INDEPENDENCE ASSOCIATION			
Ratesville, First—E. P. J. Garrott	1,000.00		1,446.93
Calvary—H. W. Wooten	180.00		3.00
Cord			
Cushman			
Desha—Clay P. Roach	15.00		
Pilgrim's Rest—W. J. Smith	10.00		

Pleasant Plains		
Rehobeth—W. E. Davis		
Rosie—G. M. Roberts		
Ruddell Hill—Doyle Creech	96.85	16.25
Salado	13.00	
Salem		
Sulphur Rock—G. M. Roberts	16.38	
Union Grove—E. I. Sneed	25.00	
West Batesville—L. H. Roseman	360.00	187.50
White River	12.00	

TOTALS \$ 1,728.23 \$ 187.50 \$ 1,466.18

LIBERTY ASSOCIATION		
Caledonia—W. H. Jameson	16.50	
Callon—Jesse Kidd	50.00	
Camden—T. L. Harris	1,914.48	195.00
Chidester—Rawls Pierce	100.00	
Cross Roads—J. E. Poindexter	15.00	
Cullendale—J. Elmer Morgan	1,338.00	154.00
Ebenezer—Bruce Murphy	50.00	
El Dorado, First—Sam Reeves	4,500.00	1,785.99
El Dorado, Second—Jesse Reed	1,249.98	600.00
Elliott—Tom Lindley	250.00	12.50
Felsenthal—C. M. Miller	3.73	
Gallie—L. W. Williams	87.51	33.00
Huttig—O. Bernard	242.50	40.00
El Dorado, Immanuel—J. D. Tolleson	2,293.17	150.00
Joyce City—Charles W. Nash	345.43	50.00
Junction City—C. E. Archer	461.83	30.00
Knowles Chapel—L. R. Mitcham	17.78	
Lapile—R. O. Ekrut	6.65	
Lawson—O. W. Miller	25.00	
Liberty—L. W. Rhoades		
Lisbon	3.39	
Louann—G. Paul Starnes	446.62	
Midway—C. M. Miller	14.61	
New London—F. E. Canady		
Norphlet—Glen Crotts	1,362.71	468.50
Norris		
Parkview—J. A. O. Russell	98.21	
Philadelphia—L. R. Mitcham	16.50	
Salem—Hugh Cantrell		
Shuler—J. B. Ritchie	30.00	10.00
Smackover—Ralph Reasor	1,018.46	17.00
Snow Hill—W. E. Jackson		
Stephens—Hugh Cantrell	606.15	24.00
Strong—R. O. Ekrut	199.32	27.00
Three Creeks—J. B. Ritchie	10.00	
Union—R. C. Brinkley	180.00	25.00
Urbana—Marsh Whittington	150.00	30.00
Village—J. E. Hargett	125.00	
Wesson—James Luck	5.00	
West Side—Lonnie Lassater	514.46	133.00

TOTALS \$17,747.99 \$ 3,145.99 \$ 1,383.53

LITTLE RED RIVER ASSOCIATION		
Brownsville	6.00	7.50
Concord		
Edgemont		
Heber Springs—W. F. Montgomery	375.00	60.00
Lone Star—O. D. Yount		
McJester—Aubrey Staggs		
Mt. Olive—W. B. O'Neal	10.00	
Mt. Zion	15.00	
Palestine		
Pleasant Hill—R. E. Leigh	24.00	
Pleasant Ridge—Leonard Bunch	15.00	
Pleasant Valley		
Post Oak—Thomas Reeves	9.00	
Quitman—Harold Trevolt	30.00	
Shiloh—Robert I. Walters		5.00
Stony Point—O. D. Yount		
Valley Hill—A. V. Moody	24.00	

TOTALS \$ 508.00 \$ 60.00 \$ 12.50

LITTLE RIVER ASSOCIATION		
Ashdown—Dale McCoy	241.98	102.50
Ben Lomond—Otis Mills		
Bingen—Paul Hatton	130.00	
Brownstown—James Hampton	10.00	
Mineral Springs, Central—Claude Stewart	30.00	
Columbus—Floyd Taylor	49.83	12.00
DeQueen—Lawson Hatfield	293.27	50.00
Dierks—Carroll Gibson	18.88	
Foreman—Roy Fowler		38.50
Hicks—John McClanahan		
Horatio—Russell Armer	50.00	
Liberty—J. A. Calloway		
Lockesburg—W. T. Bynum	120.00	45.00
Lone Oak—Wendall Poole		24.53
Mt. Moriah—Gail Zimmerman	15.00	
Murfreesboro—R. E. Baucum	120.00	6.00
Nashville—W. E. Perry	1,099.08	195.50
New Home—O. L. Gardner	14.90	25.00
Ogden—Roy Stogstill	11.33	
Ozan		
Paraloma—Darrell Jones		
Rock Hill—A. Q. Zachry		
Sardis—A. Q. Zachry		1.50
State Line—Otis Mills		
Washington—Floyd Taylor	40.00	5.30
Wilton—J. E. Anderson	45.00	
Winthrop—H. V. Wilson	7.50	

TOTALS \$ 2,296.82 \$ 418.00 \$ 233.83

MISSISSIPPI COUNTY ASSOCIATION		
Armored—O. W. Auten	45.00	18.00
Blackwater—T. J. Richardson	8.00	6.40
Blytheville, First—E. C. Brown	2,700.00	72.60
Boynnton—Hugh McGehee	12.50	
Brinkley Chapel—Emmitt Cross		
Browns Chapel—J. M. Wilkinson		62.05
Calvary—P. H. Jernigan	100.00	
Dress, Central—L. L. Jordan	82.88	10.25
Clear Lake—J. Ernest Cox	144.00	
Cole Ridge—A. B. Jordan	30.52	
Cross Roads—Arnold Clayton	7.92	
Dell—M. F. Griffin	60.00	
Emmanuel—Erick C. Hecksher	55.62	
Etowah—Roy Johnson		
Fairview—Elmer McCall	20.00	
Gosnell—Carl Castleman	25.00	21.00

(CONTINUED ON PAGE 15)

QUARTERLY REPORT

(CONTINUED FROM PAGE FIFTEEN)

Church and Pastor	Undesignated Co-operative Program Contributions	Ouachita Campaign Designated Contributions	Other Designated Contributions
Harris Chapel—J. T. Midkiff	105.00		6.00
Hydrick—W. T. Tiner			
Jericho—G. C. Anderson			
Madison—J. M. Hitt	12.00		
Marion—N. E. Lerch	159.52		24.00
Mays Chapel			
Mt. Pisgah			
Palestine—J. M. Hitt	6.00		
Parkin—Ray Langley	350.00		
Pine Tree—R. E. Fowler			
Riverside—W. M. Thompson	3.00		
Shell Lake—W. T. Tiner	12.00		
Togo—W. H. Efferson			
Vann Dale—Freeman McMenis	10.00		
West Memphis—V. E. Boston	780.00		3.00
Wheatley			
Wynne—Boyd Baker	829.86	150.00	
Turrell	30.00		15.00
TOTALS	\$ 4,020.20	\$ 300.00	\$ 130.87
TRINITY ASSOCIATION			
Bethel			
Corners Chapel—A. S. Smith	15.00		
Fisher—Coy D. Sims	30.00		
Freer—Carl Hathcoat			
Greenfield—O. L. Justice	9.00		13.00
Harrisburg—John Collier	90.00		
Hurds Chapel			
Lebanon			
Lepanto—Leslie Riherd	250.05		81.30
Maple Grove—Carl Hathcoat	3.00		
Marked Tree—W. F. Carlton	285.40		
Neiswander—W. A. Applegate			
Pleasant Grove—L. C. Edwards	15.00		
Pleasant Hill—Harold Barton	37.50		8.00
Pleasant Valley—R. P. Kennedy	2.50		
Red Oak—L. M. Riherd	16.23		
Ridgeview			
Shiloh—Clarence Edmonson			
South McCormick—Homer Cantrell			
Trumann—J. M. Basinger	200.00		
Tyronza—Boyd Eldridge	819.46		34.00
Valley View—Clarence Edmonson			
Waldenburg—L. C. Edwards			
Weiner—C. F. Barnett	66.69		3.00
Weona Junction			
West Ridge—R. D. McEwen			
Miscellaneous			6.00
TOTALS	\$ 1,839.83		\$ 145.30
WASHINGTON-MADISON ASSOCIATION			
Black Oak—J. E. Reed	9.60		
Brush Creek	7.50		
Farmington—Jesse Coleman	60.00		
Fayetteville, First—W. L. Johnson	1,804.00		287.22
Fayetteville, Second—Norman V. Drake	6.66		
Friendship			5.50
Hindsville—S. D. Etris	25.60		
Huntsville—R. W. Jones	30.00		
Johnson—Ewel Logue	15.00		
Liberty—Glen Steele	22.64		
Lincoln—A. J. Scott	114.05		
New Hope—S. D. Etris	5.00		
Prairie Grove—John B. Stephen	9.00		8.98
Springdale—Stanley Jordan	999.99		6.00
Spring Valley	15.00		51.66
Sulphur City—Marshall Therneau	37.83		9.20
West Fork—Raymond Redd	35.00		
Winslow—T. J. Redford	12.72		
TOTALS	\$ 3,209.59		\$ 368.56

WHITE COUNTY ASSOCIATION			
Beebe—William M. Burnett	75.00		
Bethany—Sidney W. Holcomb			
Central, Bald Knob—C. S. Maynard	76.17		16.39
Crosby	21.00		
El Paso—Ernest Anderson	45.00		
Griffithville	15.00		12.00
Harris Chapel			
Higginson—John Q. Eason	10.00		
Judsonia—Robert McMillan	100.00		
Kensett—Amos Greer	102.70		
Liberty—H. M. Dugger	10.00		
McRae—E. F. Simmons	15.00		
Morrow	9.00		6.94
Mt. Hebron—H. M. Dugger	30.00		
Mt. Sidon—Ernest Anderson	15.00		30.00
New Bethel			
Pangburn—W. B. O'Neal	10.00		
Pleasant Valley—E. A. Blanton	9.00		
Rescue—Sidney W. Holcomb	7.50		
Rocky Point—O. B. Smythe	6.00		
Rosebud—Floyd Ward			
Royal Hill—John Q. Eason	25.00		
Searcy—W. R. Vestal	861.00	260.00	12.00
Smyrna	15.00		22.00
Union Valley	6.00		
West Point—Bill Lewis			
TOTALS	\$ 1,463.37	\$ 260.00	\$ 99.33

WHITE RIVER ASSOCIATION			
Antioch	15.00		
Blooming Grove			
Cotter—T. E. Funderburk	169.48		58.41
East Cotter—J. F. Richardson	10.53		
Flat Rock—J. F. Duncan			
Gassville—C. W. Tapley	15.00		
Hopewell—Troy F. Melton			
Mountain Home—D. W. Stark	200.00		
New Hope			
Norfolk—Claude Crigler	10.00		
Oak Grove—J. F. Duncan			
Oakland—George W. Johnson			
Pilgrims Rest—D. W. Stark	19.36		5.00
Pleasant Hill—S. W. Wilkerson	10.00		
Rehobeth	45.00		2.00
Whiteville	15.00		
Yellville—Oakley Long			
TOTALS	\$ 509.37		\$ 65.41

WOODRUFF COUNTY ASSOCIATION			
Augusta—Dell Hames	300.00	243.89	30.00
Cotton Plant—Rivos H. Dorris	106.44		
Good Hope—C. S. Ramseyer	10.18		
Gregory—C. S. Ramseyer	22.93		
Hunter—L. Y. Lewis	57.37		23.39
McCroory—Chester Parker	144.00		
Pleasant Grove—Ellis Green	40.00		5.50
Raynors Grove			
Riverside—C. H. Garner	12.75		
Tupelo	27.20		
TOTALS	\$ 720.87	\$ 243.89	\$ 58.89
UNASSOCIATED			
Keo	49.11		
Miscellaneous	10.00	11,050.00	17.55
GRAND TOTALS	\$150,702.96	\$34,926.93	\$55,552.62

**“A LEGAL EDUCATION
IN A
CHRISTIAN UNIVERSITY”**

WALTER F. GEORGE SCHOOL OF LAW, Mercer University,
Macon, Georgia. Member, Association of American Law Schools;
approved American Bar Association; unusually high ratio of one
full-time faculty member for each twenty students assures ade-
quate individual attention to each student. For further informa-
tion, communicate with, Dean.



The Arkansas Baptist
in
Every Home
Every Week

Do you read your denomina-
tional paper? **Arkansas**
Baptist readers are
Arkansas Baptist
leaders.