

Ouachita Baptist University

## Scholarly Commons @ Ouachita

---

Arkansas Baptist Newsmagazine, 1975-1979

Arkansas Baptist Newsmagazine

---

10-27-1977

### October 27, 1977

Arkansas Baptist State Convention

Follow this and additional works at: [https://scholarlycommons.obu.edu/arbn\\_75-79](https://scholarlycommons.obu.edu/arbn_75-79)



Part of the [Christian Denominations and Sects Commons](#), [Mass Communication Commons](#), and the [Organizational Communication Commons](#)

---

#### Recommended Citation

Arkansas Baptist State Convention, "October 27, 1977" (1977). *Arkansas Baptist Newsmagazine, 1975-1979*. 156.

[https://scholarlycommons.obu.edu/arbn\\_75-79/156](https://scholarlycommons.obu.edu/arbn_75-79/156)

This Book is brought to you for free and open access by the Arkansas Baptist Newsmagazine at Scholarly Commons @ Ouachita. It has been accepted for inclusion in Arkansas Baptist Newsmagazine, 1975-1979 by an authorized administrator of Scholarly Commons @ Ouachita. For more information, please contact [mortensona@obu.edu](mailto:mortensona@obu.edu).

# RICHWOODS BAPTIST CHURCH

100 years  
at Richwoods  
page 6

Arkansas Baptist  
October 27, 1977  
NEWSMAGAZINE





## I must say it

Charles H. Ashcraft / Executive Secretary

### Inflation, the big rip-off

Most of the problems of the world could be cured by a relatively few people who would be willing to be participants in an experiment of applied Christianity. I mention the problem of inflation. Inflation is caused by Americans ripping off Americans. The capitalistic form of government seems to be predicated upon sophisticated larceny. Graduates in this mark up madness rise quickly to prominence because they know how to drive the hard bargain, overcharge with charm and lift the pesos quietly from their peasant victims, as well as their own associates.

The American people boast when they beat their friends out of an airline, railroad, competing corporation or his pretty young wife. For all this he may be elevated to board status in banks, hospitals, benevolent foundations and even a trustee of his old alma mater. Rewarding rip-off artists encourages others to excel in this mutual decimation of fellow travelers and at last we have uncontrolled inflation because we have outsmarted ourselves. We have priced each other out of business and we have become bankrupt with millions in the bank. It is not too simple to say "inflation is the result of fellow citizens ripping off fellow citizens" and to say the cure would be to "stop it".

America has been built on the concept of a day's work for a day's pay, a good product at a fair price and "we stand behind our merchandise." When more and more money is charged for less and less merchandise, and when less and less work is done for more and more money and when two citizens are systematically reducing each other to the status of a pauper, we have inflation. Americans are not aware that the destruction of the consumer destroys the producer, and vice versa, and they both shall ultimately share the same tomb.

When a certain number of people make up their minds to participate in an exercise of applied Christianity, a dollar will soon be a dollar again. It means we will give a full day's work for a full day's pay, charge only what the merchandise or service is worth, delete the role of a vulture, buy only what we can use, set back some savings, be as willing to give a bargain as to get one, and serve humbly Almighty God. Inflation could be checked in 30 days if we would stop ripping off our friends and neighbors. Inflation is second only to unemployment in the demoralization of a nation. War itself is less destructive to the economy than inflation. Inflation must be checked or America will become a national poor house.

*I must say it!*

## In this issue

### President speaks 4

State Convention President R. Wilbur Herring shares his thoughts on the annual meeting, which is less than two weeks away. The article is the last of four in a series by Dr. Herring.

### Missionaries 5

Among newly-appointed foreign missionaries are three persons with Arkansas connections. An article about them, with photos, is part of the regular feature, "Arkansas all over . . . people".

### Centennial 6

The centennial birthday of Richwoods church near Arkadelphia is the subject of the cover this week. An article and photos tell the history of the church and the story of their celebration.

### Giving reports 14

The report of gifts to the Cooperative Program by churches, which is one of four published each year, reports regular Cooperative Program gifts and designated offerings for Arkansas churches.

# Arkansas Baptist

NEWSMAGAZINE

VOLUME 76

NUMBER 42

J. EVERETT SNEED, Ph.D. . . . . Editor  
BETTY KENNEDY . . . . . Managing Editor

ERWIN L. McDONALD, Litt. D. . . . . Editor Emeritus

Post office box 552, 525 West Capitol Avenue, Little Rock, Arkansas 72203. Published weekly except at July 4 and December 25. Second Class postage paid at Little Rock, Arkansas.

Letters to the editor expressing opinions are invited. Letters should be typed double-space and must be signed. Letters must not contain more than 350 words and must not defame the character of persons.

Photos submitted for publication will be returned only when accompanied by a stamped, self-addressed envelope. Only black and white photos can be used.

Deaths of members of Arkansas churches will be reported in brief form when information is received not later than 14 days after the date of death.

Original poetry cannot be considered for publication.

Individual subscriptions \$3 per year. Every Resident Family plan 18 cents per month of \$2.16 per year per church family. Club plan (10 or more paid annually in advance) \$2.76 per year. Subscriptions to foreign address \$5 per year. Copies by mail 25 cents each.

Advertising rates on request.

Opinions expressed in signed articles are those of the writer. Member of Southern Baptist Press Association.

## Churches and taxation (Part 1)

## The editor's page

J. Everett Sneed



Recently it was my privilege to attend a conference on "Taxation and the Free Exercise of Religion". The conference, sponsored by the Baptist Joint Committee on Public Affairs, presented both the pros and the cons of taxation of churches. It is our opinion that churches should remain tax exempt.

There are those who continue to press for taxation of churches. They maintain that churches should pay their just portion of the government's operating expenses. Most agree that income tax would have little or no effect on a church since churches have little or no profits. Most of what a church receives is used in operations, evangelism, benevolences or missions. Of course, if income tax were levied, it could and most likely would have long-range implications. Once a tax is established and accepted, it can be readjusted and any such tax could destroy the churches of America.

Most of those maintaining that churches should be taxed are presently pushing for property taxation. They contend that a church should pay its fair share of fire and police protection. We believe that no type of tax should be levied on churches. First, because the right to tax is the right to control and destroy. The First Amendment to the Constitution guarantees freedom of religion. When the government — local, state or federal — has the power of taxation, it obviously controls some of the activities of any person or organization. Also, there are churches with small congregations, who own property in high property taxation areas, who could not pay their property taxes. It would destroy them immediately.

Religious organizations have been tax exempt for many thousands of years. When the Israelites came to

Egypt, their places of worship were tax exempt. (See Gen. 47:26.) The tax exempt status of churches has existed since our beginning in America.

The argument that churches are the only major recipients of property tax exemption is totally untrue. Our founding fathers never intended that property taxes should be equalized. The list of tax exempt property is long. Among these are benevolent non-profit organizations, cemeteries, government parks, educational facilities (both public and private), government departments of public works, etc.

Finally, it is probably illegal for a church to pay taxes to the government because money given to churches is given exclusively for religious purposes. If the government takes any of the money, it certainly would be going for other than religious activities.

The government does have a problem since several organizations, not at all religious in nature, claim to be churches. These organizations were formed to avoid taxation. We believe that the law which took effect on Jan. 1, 1976, to tax all unrelated church income is fair and should solve the problem. Unrelated tax income is money acquired through business investments. If, for example, a church opened a retail store, these profits would be taxable.

Baptists must be vigilant. For once the government taxes our churches, they can control religious life in America. Our freedom of religion is at the heart of American democracy. Let's love it, support it, and defend it.

**Note: Next week we will be dealing with the church's right to speak to political issues without taxation.**

## Guest editorial

### The Bible and estate stewardship

"I can understand the Foundation encouraging gifts from estates, but what about this business of investing? Is this the thing to do?" This question was raised during a group discussion. For the Christian who honestly has doubts, it deserves an answer.

From a practical standpoint, investment is good business. The investment provides the Baptist Agency with income that strengthens a ministry of outreach. Industry is provided capital for expansion resulting in new jobs. A financial institution has mortgage money to use in the construction of new homes. This results in a better standard of living for all. But what does the Bible have to say?

In Genesis we find the principle of putting aside today for tomorrow's needs (Gen. 41:14-57). This is the account of Joseph interpreting Pharaoh's dream. The people are to lay aside during seven years of plenty in order to have adequate food during a famine. The writer of Proverbs gives added support to this principle (Prov. 6:6-8; 21:5, 20; 30:24-25).

In Matthew we find the principle of using wisely whatever we have (Matt. 25:14-30). Here Jesus clearly applies an economic principle to teach a spiritual truth.

The account describes three men who are given varying

amounts of money based on their ability. The Master departs and after a period of time returns for an accounting. Two put the money to work in the market place and are able to return to their master double the original amount. The other can only return the amount given to him.

A. T. Robertson in "Word Pictures in the New Testament" and the American Commentary clearly deal with the economic factors involved. Robertson points out that the servants given the five and two talents act promptly. This was more than placing the money in an interest bearing account. The money was put to work in the market place.

The servant that allows the money to sit idle is the one rebuked. To paraphrase the passage, "You unwise person. You left my money in a 'checking account' when it could have been placed in a 'savings account' where it would have realized some growth."

The ministry of the Foundation stems from these two principles. People are encouraged to practice estate planning today so that material resources may be put to work tomorrow to strengthen the ministry of outreach in the years to come. — **Harry D. Trulove, President Arkansas Baptist Foundation**



## One layman's opinion

Daniel R. Grant / President, OBU

### When age is cherished

Congress is currently considering legislation that would prohibit most employers from requiring retirement of employees at the age of 65. The pros and cons of such legislation are highly complex, and I certainly do not pretend to be an expert on the possible effects of permitting employees to work an extra five years after they become 65. I hear some argue that it will make it more difficult for young people to receive employment for the next five years, and also that it will increase expenses of large employers because of the larger salaries of persons with long seniority, compared with the smaller salaries of beginning employees. I have heard others argue that medical science has now made the 65-year-old person very healthy, both physically and mentally, and that it is unjust to turn a person out to pasture when there is no reason at all except that the earth has revolved around the sun a particular number of times in a person's life.

The arguments remind me of a quota-

tion in a recent letter from Mrs. J. E. Berry, long-time friend and supporter of Ouachita Baptist University. The quotation went as follows:

*"Age is a funny thing  
Cherished in a tree  
In wine and cheese  
And furniture,  
In anything but me."*

Age is indeed a funny thing, especially in the culture and tradition of the United States of America. Nothing is more beautiful in American life than the lovable elderly person who is obviously loved and appreciated by friends and associates. Nothing is more tragic in American life than the abandoned and lonely person who apparently no longer has friends and loved ones on whom to lean.

It may be that raising the age of mandatory retirement will ease this problem for senior citizens. It would help even more if we could learn to cherish age in human beings as much as we do in trees, cheese and furniture.

## The President speaks Convention plans

by R. Wilbur Herring  
(Last in a series of four articles)

Our State Convention is near at hand, and it seems as if all the preparations for a good convention have been made. I hope that you have been faithful in the matter of praying for the convention and that this will be a mountaintop experience for all of us.



Dr. Herring

Dr. Sneed, as editor of our *Arkansas Baptist Newsmagazine*, did an excellent job in the issue of the magazine for Oct. 6. In that issue you were given the entire program, the personalities and, also, the recommendations to be made by the Executive Board and the committees of the Convention. You should have adequate time to give prayerful consideration to each of these recommendations and to be ready to vote in favor of the recommendations or to amend them according to your leadership.

Perhaps the greatest difference in this convention and other conventions is the fact that our officers and Program Committee wanted to present the one united program of all of our departments, agencies and institutions. On Wednesday night the program will be given over to this objective. Those in charge of the program have worked hard; and we have spared no reasonable expense in presenting an attractive, interesting and very informative program. The local church is the focal point and the presentation is to define what our state program does for the individual church.

I hope that you are planning to attend the Wednesday night service and that you will have as many of your people there as possible. We will be meeting in the Robinson Auditorium, and we are hoping and praying that the auditorium will be completely packed.

Let me ask you again to be in much prayer for me, the other officers and all of the committees of the Convention. It is so necessary that we bathe the entire program in prayer so that it shall be everything that God purposes in his heart for us.

Thank you for the privilege of serving as your President. I will be looking forward to seeing you at the Convention.

## Boyce Bible School sponsors study on Exodus

Wayne Ward, professor of Theology at Southern Seminary, Louisville, Ky., has been secured by the Boyce Bible School, Little Rock Center, to teach a crash course on Exodus, the January Bible Study book for 1978. The course will be taught Dec. 12, 13 and 14.



Ward

Although the course is primarily intended for pastors, it will be open to lay people and all who will be teaching January Bible Study. The course will carry one hour of Boyce Bible School credit which can be transferred to many colleges. The course will also be open to those wishing to audit. The cost is \$15 for everyone. Students, however, who carry a full load in the second term, can count the Exodus course as a part of the second term tuition and will be able to enroll in the course without additional cost.

The sessions will be at the Boyce Bible

School Center, Central Baptist Hospital, 12th and Wolfe Streets, Little Rock. The time will be Monday and Tuesday, 10 a.m. until noon, 2 to 4 p.m., and 4 to 6 p.m.; on Wednesday the hours will be from 8 to 12 noon.

W. T. Holland, director of the Little Rock Boyce Bible School, said that some scholarships are available through the continuing education program of the Arkansas Baptist State Convention for those who will be taking Exodus. The school will also be able to provide a limited amount of housing, without cost, for those who are taking Exodus. Preference will be given both for housing and scholarships to those who are regularly enrolled in the Boyce Bible School program.

R. H. Dorris, director of state missions, said that the Missions Department is also offering expenses to all students who use their automobiles to bring other students to and from the Boyce Bible School. Any student who is interested in scholarships, housing or mileage should contact Director W. T. Holland, 60 Warwick Road, Little Rock, Ark. 72205, for additional information.

**Bert Hargett** has been called as bus director and children's work coordinator by North Main Church, Jonesboro. Hargett, 34, was licensed and ordained to the ministry by North Main Church, and he has served as pastor of Egypt Church. He and his wife are the parents of two sons and a daughter.



Hargett

**Ben M. Elrod**, vice president for development at Ouachita University, was promoted Oct. 13 to senior vice president and director of development.

Dr. Elrod has been at OBU for 12 years, first from 1963 until 1968, and then from 1970 until the present. He served as president of Oakland City College (Ind.) from 1968 until 1970.

He has earned two doctorates, a Th.D. from Southwestern Seminary in Fort

Worth, and an Ed.D. from the University of Indiana.

**Noel Tanner** of Ash Flat died Oct. 7 and memorial services were held at the Ash Flat Church Oct. 9. Tanner, who died in the Veterans Hospital in Little Rock, had been a Southern Baptist minister for the past 20 years. Arkansas churches he served include Pitts, Wiseman, Grandview, Palestine, Hardy First, West Side First, Northvale, Salem, Floral and Ash Flat. Survivors include his wife, Mozell; three daughters, Mrs. Nolita Majors of Conway; Mrs. Elesha Copeland of Houston, Tex.; Miss Alaina Tanner of Ash Flat; two sons, Russell of Agnos; and Lewis of Ash Flat; three sisters; two brothers; and five grandchildren.

**Ed Adcock** has been called to serve as minister of music and youth at First Church, Hampton. Adcock, a student at Ouachita University, is from Hobbs, N.M.

**Mr. and Mrs. Guy Cook** of Owensville celebrated their 50th wedding anniversary

with open house at their home in Owensville on Oct. 9. The Cook's were married on Oct. 8, 1927 at First Church, Conway. Cook, a retired farmer and land developer, is a deacon and a teacher in the Senior Adult Sunday School Department of the Owensville Church. Mrs. Cook, a retired bookkeeper, is church treasurer and teacher in the same department. They are parents of a son, Charles E. Cook of Owensville, and a daughter, Mrs. Don L. Nobles of Hot Springs. The Cook's have five grandchildren.

**Larry D. Sherman** is serving as associate pastor in charge of youth and education at Dallas Avenue Church, Mena. The son of Rev. and Mrs. Emmett Sherman of Hatton, he is a graduate of Ouachita University. Sherman is married to the former Gwen Looper, daughter of Rev. and Mrs. O. R. Looper of Booneville. They are parents of two children, Robby and Teri. Sherman is active in civic and community activities. He has served on the Chamber of Commerce and Mena Lion's Club boards; is a past president of the Mena Jaycees and was recognized as an "Outstanding Young Man of America" in 1976. He has been active in church work at the Dallas Avenue Church as director of the youth department, youth advisor, choir member, and a Yokefellow.

**Andy Malone** has resigned as minister of music and youth at First Church, Paragould. He and his family have moved to Oklahoma City.

**Rev. and Mrs. Jimmy Garner** were honored with a love offering at the annual meeting of Trinity Association. Garner has served the association as Director of Missions for the past 10 years.

**Lance Winn** has been called by Walcott Church to serve as music and youth director. J. C. Moses will serve the church as minister of education.

**Jim Glover** has resigned as pastor of Oak Grove Church, Greene County Association.

**Jack Porter** has resigned as pastor of Marmaduke Church.

**James Moore** has resigned as pastor of Third Avenue Church, Paragould.

**Dr. and Mrs. R. Wilbur Herring** were honored Oct. 13 as they began their ninth year of service at Central Church, Jonesboro. The Herring's previously served the Jonesboro church for seven years. Dr. Herring serves as president of the Arkansas Baptist State Convention.

**Roy South** has been called as pastor of Winslow Church. He and his wife, Bobbie, have moved back to the state from California.

## Arkansas people appointed

RICHMOND, Va. — Three persons with Arkansas connections were among the 24 missionaries appointed by the Southern Baptist Foreign Mission Board at its Oct. 11 meeting here.

Linda Dillworth expects to serve as a nurse at Mati Baptist Hospital in the Philippines, where she previously worked two years as a missionary journeyman from 1974-76.

A journeyman is a college graduate no older than 26 who works for two years alongside career missionaries in specific job assignments overseas.

Currently, Miss Dillworth is a student at Southern Seminary, Louisville, Ky. She is a member of St. Matthews Church in Louisville.

Miss Dillworth was born in Ft. Knox, Ky., and has also lived in Germany; Ft. Smith, Ark.; Lawton, Okla.; and Augusta, Ga., while growing up. She received a diploma from Georgia Baptist



Miss Dillworth

Hospital School of Nursing and the bachelor of science degree from Georgia State University, both in Atlanta. Miss Dillworth also achieved the registered nurse standing by examination.

Miss Dillworth has also worked as a staff nurse at the Southern Baptist Missionary Orientation Center, Pine Mountain, Ga., and as a staff nurse and charge nurse at Georgia Baptist Hospital.

Rev. and Mrs. Doy L. Jones, employed as missionary associates, expect to serve in Ecuador, where he will be an English language pastor.

Jones is president of the Kansas-Nebraska Convention of Southern Baptists. For the past 15 years he has been pastor of Tyler Road Church in Wichita, Kan.

A native of Clarksville, Ark., Jones is a graduate of Southwestern Seminary, Ft. Worth, Tex. He also attended Friends University in Wichita. He is a former research analyst for an aircraft company, served as chaplain with the Wichita Police Department for 10 years, and taught a seminary extension course in Wichita for seven years. He has held pastorates in Agee, Tex., and Broken Bow, Okla.

Mrs. Jones, the former Betty Matts of Sand Springs, Okla., was employed with the Southern Baptist Radio-Television Commission while the couple lived in Ft. Worth.

They have two grown daughters.

Jones

Mrs. Jones



Young people of the church presented special music in the service Sept. 18. The day's events called for old-fashioned dress and several of the young people came dressed in the mode of yesteryear.



## Richwoods celebrates centennial

Richwoods Church, near Arkadelphia, celebrated their centennial during the month of September. Former pastors were the guest speakers used to commemorate their 100th birthday. Among these were C. H. Seaton, now director of Brotherhood for the Arkansas Baptist State Convention; Homer Shirley, director of development for the Family and Child Care Services of Arkansas; Weldon Vogt, professor of psychology, Ouachita University, Arkadelphia; E. W. Taylor, retired but serving as interim pastor of Rolling Hills Church near Fayetteville; and Sam Turner, director of missions for Ashley County Association.

Early records of the church are sketchy but there is clear evidence that the church was in existence in 1877. In 1897, the church voted to contribute \$2.60 to associational missions. In the same meeting they voted to organize a Sunday School, and in April the first

Sunday School met at the Studdard Schoolhouse. The first record of the Lord's Supper being celebrated was in June of 1897.

In the early days, the Richwoods Church exercised strong discipline. In 1899, one of the women of the church was dismissed for dancing. A committee was appointed to investigate the matter, and in September she told the church that she was sorry and was restored to fellowship within the congregation. In February of 1900, a committee was appointed to meet with some disorderly members. On April 21, 1900, the church withdrew fellowship from three members and offered prayer on behalf of each of the individuals.

Although Sunday School had been in existence from the early days of the church, the first record of a Sunday School superintendent was the election of J. W. Webb in September, 1941. Johnny Howell was elected as his assistant.

In January, 1942, the church began having half-time preaching on the first and third Sundays of each month.

During the ministry of C. H. Seaton, the church erected a new church building. It was dedicated on Aug. 29, 1948, with Carey B. Gardner bringing the dedicatory address. The prayer of dedication was given by E. W. Taylor.

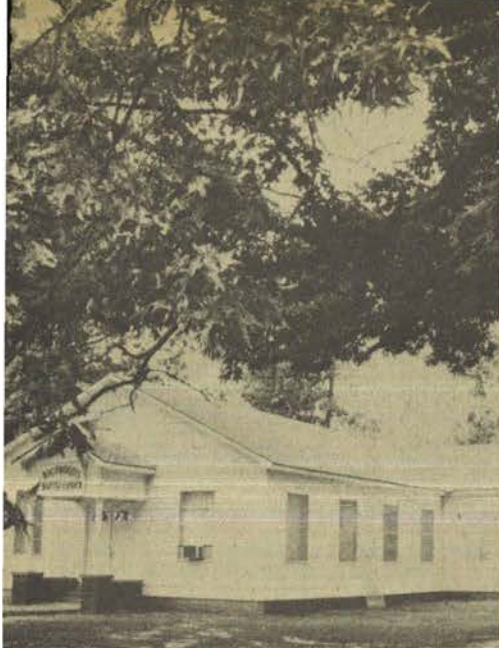
The church erected a pastor's home in 1955.

On Oct. 8, 1967, Weldon E. Vogt was called to pastor the church. He was ordained Nov. 26, 1967.

New pews were ordered on Oct. 22, 1974. The present pastor of the church, Donnie M. O'Fallon, was called as pastor in 1976.

Under the leadership of Pastor O'Fallon, the church has a complete program. The Sunday School is currently averaging 48 and Church Training 32. The church has ordained two deacons in





*Richwoods Church meets in this frame building.*

the past year. These are Johnny Neel and Wade Allison.

The centennial committee was composed of Ottis and Jeffeling Hollingshead, Harold and Ethal Neel, Lois Greeson and Audra Stowe.

Pastor O'Fallon says that the church has a very bright future. He said, "An Industrial Park is being projected in the heart of the Richwoods community. This will bring several hundred people into our area and should provide an excellent opportunity for church growth. In Gurdon, which is only about 10 miles south, there will be additional opportunities for employment of 500 to 550 people. These people will be near enough to be easily reached and I believe because of the great spirit our church has, that we will be able to reach many of these for the Lord. Our second century as a church should be bright as we work together to serve our Master."

**Photos, opposite page**

*LEFT: Pastor Donnie O'Fallon was called by the church in 1976. He looks for growth in the church because of economic growth in nearby towns.*

*RIGHT: Former pastors who joined O'Fallon in the centennial observance were (from left) Homer Shirley, C. H. Seaton, Weldon Vogt, (O'Fallon) and E. W. Taylor. (ABN photos)*

**On the cover**



*Overalls, long dresses and sun bonnets were in order when Richwoods Church, near Arkadelphia, observed their centennial last month. These youngsters brought special music for services that day.*



# Arkansas all over

**Dallas Avenue Church, Mena**, recently surprised Phil Ayres, music director, and his family with a "pounding" to mark their first year anniversary with the church. Ayres, in his first year of ministry, has seen choir enrollment double; has organized two new choirs; and has planned a summer tour for the youth choir. His wife, Freddie, serves as Woman's Missionary Union Director and a Sunday School teacher in the Adult Department. They are parents of two sons, Mike and Darrin. Max Deaton is pastor.

**First Church, Salem**, held its fall revival Oct. 16-23. Junior Vester of Paragould was evangelist. Music was directed by Larry Burk of Mountain Home. The Salem church concluded "My Faith in Action," a Sunday School campaign, on Sunday, Oct. 16. Scott Baker, Sunday School Director, reports an attendance increase as a result of the campaign. Jim Whitlock is pastor.

**First Church, Grady**, began a Children's Worship Service on Oct. 9. Floy Haller and Sue Robertson are in charge. Alan T. Tucker is pastor.

**Pulaski Heights Church, Little Rock**,

held a World Missions Conference on Oct. 9-11. "Behold I Do A New Thing," was the theme for the event which was instituted under the leadership of Jerry Warmath, pastor. Steering committee members were Rose Dunham, Linda Allen, Richard Carlsen, Terry Watson, Lela Willis, Karen Russey and Molly Marshall. Conference leaders were James Crookham, US-2 missionary; Glendon Grober, missionary in Belem, Para, Brazil; Robert Gross, Director of the Migrant Mission Center at Hope; Mary Lynne Gurney, a missionary with the Home Mission Board's Special Ministries Department, working with Internationals in Colorado; Janice Porter, who served two years as a journeyman in Southwest Africa; and Fred Spann, professor of music at the North Brazil Baptist Theological Seminary and minister of music at the Cordeiro Baptist Church in Recife.

**Graves Memorial Church, North Little Rock**, held services on Oct. 9 to ordain Mike Broadway as a deacon of the church. The church is in revival Oct. 23-30 with Robert Sivils as evangelist. Robert George is directing music. Tom-

my G. Cupples is pastor.

**Westside Church, Fort Smith**, honored their pastor, Harry Wilson, and his wife, Ethyl, on Sept. 25 in recognition of their fourth anniversary with the church. James Ortiz presented a love offering and gifts to the couple. The Westside Church, under the leadership of Wilson, has seen attendance growth in both Sunday School and Church Training, and has purchased property to begin construction of a new sanctuary and educational building.

**Central Church, Magnolia**, will have a Family Life Enrichment Conference Nov. 11-13. The conference is to be conducted by Dr. and Mrs. John W. Drakeford. Dr. Drakeford is professor of psychology and counseling at Southwestern Seminary. Jon Stubblefield is pastor.

Fellowships are held by **Dallas Avenue Church, Mena**, following each home football game. Larry Sherman, associate pastor, is in charge of the fellowships which are held at the National Guard Armory. There have been many firsts at these events, including a 20-foot banana split; 16 foot hot dog; 18 foot pizza; and



## Woman's viewpoint

Betty Seay Crews

### *The longer I serve him*

One of the joys of being a pastor's wife is the influence that I learn from those who have lived many more years in this world than I have. I wanted to share the following testimony which has meant so much to my own personal life.

"I can never praise the Lord enough for all he has done for me through the years — 78. I can't believe it! I'm 78, but don't feel sorry for me because 62 of those 78 years have been spent in the wonderful service of my Lord. I committed my life to him when I was 16 and I've been serving him ever since. Jesus has been my constant companion. I'm so secure in God's hands. It's always safe to trust in the Lord. That's why at 78 I have no complaints about his dealings with me.

"The road has not always been smooth. I've had heartaches, disappointments, and deep sorrows. My husband and I lost a son when he was fifteen months old, and his twin sister at the age of nine years. Then in 1940 I lost my husband and our home in a tragic fire. As always, God's grace and love proved sufficient for my need. He lifted me out of my sorrow and caused the sun to shine again. Thank God for his love and grace. From these experiences, I learned that nothing is too big for God and me to handle.

"In his word he promised to never leave me nor forsake me, so I know I never have to walk alone. I don't worry about tomorrow. There are so many things I do not understand, but I know who holds tomorrow and I know he

holds my hand. In these sunset years, I have nothing to dread or fear. I'm simply trusting Jesus to go with me to the end of my journey of life, and then lead me safely home. At 78 I find myself thinking of one certain song, again and again. *The Longer I Serve Him, The Sweeter He Grows.*" (Permission to print this was granted by Mrs. Elsie Edrington.)

This testimony was concluded with this young woman singing that song and accompanied by the choir of which I was a member. I could hardly sing for crying.

I hope as I continue the journey through life that I can have such a testimony. But I, too, can already say, the longer I serve him, the sweeter he grows. Amen! Amen!

other food and fun ideas.

**McGehee First Church** has begun a new program for senior adults. A senior adult choir, to be directed by Don Hilton, minister of music, was organized on Oct. 18.

Men of **Martindale Church, Little Rock**, will lead in a Lay Revival on Oct. 28-30. Joel E. Moody is pastor.

**First Church, Cabot**, held deacon ordination services on Sunday evening, Oct. 16. Ed Caldwell was ordained. Keith Loyd is pastor.

**Cherokee Village Church** ordained William L. Earl as a deacon Sept. 25. Tom Shell, pastor of Mt. Zion Church, led the questioning and Frank Hall brought the charge to the church and the deacons. Lowell N. Jamieson is pastor of Cherokee Village Church.

**Oak Grove Church**, Greene County Association, will hold a weekend revival Oct. 28-30 with Bob Daniels as evangelist. The 25th anniversary of the church will be observed Oct. 30 with dinner following the morning worship services and an afternoon program that will begin at 2 p.m.

**Grace Church, North Little Rock**, is in

revival Oct. 24-30. Dr. Charles Ashcraft, Executive Secretary of the Arkansas Baptist State Convention, is evangelist. J. C. Morrison of Dallas, Tex., is directing the music. Dennis Tyner is pastor.

**Southside Church, Heber Springs**, in a recent business meeting, voted to oppose entry into this country of two motion picture films, "The Many Faces of Jesus" and "The Passover Plot." They sent letters of protest regarding these films to the Arkansas Baptist State Convention and the Southern Baptist Convention in Nashville, Tenn. Releases were also sent to all news media.

**Immanuel Church, Little Rock**, held its church-wide stewardship dinner on Wednesday evening, Oct. 19. Eddie Blackmon of DeKalb, Tex., was speaker. Eddie Blackmon Jr. and wife, Caroline, presented special music. Tom Blackmon, a member of Immanuel Church, introduced his father.

**St. Charles Church** observed Cooperative Program Day Oct. 2. James Hampton, missionary-in-residence under the Stewardship Department of the Arkansas Baptist State Convention, was speaker. Bob Richardson is pastor.

Members and families who attended the **Old Reynolds Memorial Church**, will hold a reunion and old-fashioned dinner on the ground from 1 to 5 p.m. on Sunday, Oct. 30. Guy S. Wilson was pastor of this church which was located on East Sixth Street. The reunion will be held at the home of Ruth and John Fletcher. Those planning to attend may call 374-3960, 372-6403 or 374-7650 for directions.

**Shannon Hills First Church**, in the past 2½ years, had had 75 additions to the church. David Medley is pastor.

**Park Place Church, Hot Springs**, held an organizational meeting for a senior adults program Friday, Oct. 21.

**Berry Street Church, Springdale**, observed its 25th anniversary on Sept. 18. Stanley Jordan, retired pastor of First Church, Muskogee, Okla., preached the afternoon service and was preacher for revival services of the church the following week. Special music for the anniversary program was presented by the Patriots Quartet and the youth choir of Springdale First Church. Cliff Palmer, pastor of Springdale First Church, was also on the program. Paul Hussey is pastor of the Berry Street Church.

Mountain echoes of church growth

The community's characteristics

by Kenneth Threet  
(Fifth in a series)



Dr. Threet

The church must have an accurate picture of the community to serve effectively. It must know the community's strengths, weaknesses and needs.

Some of the questions that the church should seek to answer about the community it is to serve are:

**Its climate.** Is it cold or hot? Can one expect snow and ice and severe winters? What effect does this climate have on participation in church activities?

**Its terrain.** Is it mountainous or flat land? Does it have lakes and river that

will attract tourists and retirees? Are there railroads or rivers or mountain ranges that seem to divide the community into sections?

**Its economy.** How do the people of the community make their living? Where are they employed? Is the work primarily seasonal? What is the average income? Is the work primarily agricultural or manufacturing? What percent of income is derived from various sources? Will the employment demand a large number of Sunday workers such as in a recreation area?

**Its culture.** What are the educational institutions in the community — grade schools? High school? College? What facilities and programs are provided for cultural activities such as drama and musical productions?

**Its recreation provisions.** Does the community have a sports program? Does it have parks, zoos, tennis courts, etc.? Is the recreation winter, summer, indoors or outside? What is the relationship of recreation to the economy and social life of the community?

**Its social climate.** Does the community have good race relations? What is the crime rate in the community? What is the nature of crimes committed? Are most arrests teenagers or adults? Are alcohol and other drugs a problem in the community? Are there minority groups in the community? What special groups exist such as deaf, blind and mentally retarded?

Kenneth Threet is pastor of First Church, Mountain Home.

## Lucy Ching to be in state

Earlier this month two women from Hong Kong boarded a PanAm flight at Kai Tak for Los Angeles. One was holding the arm of the other. She did this because she is totally blind. Lucy Ching is Hong Kong's blind social worker who works with the Social Welfare Department. The guiding arm was that of Miss Ching's lifelong amah, friend and companion, Ah Wor. They will be in America for a three-month study tour which Miss Ching has been invited to undertake on a scholarship awarded by the John Milton Society of America.

She and Miss Ching will arrive in Arkansas Nov. 6 and will remain until Dec. 11, with the exception of the week of Nov. 13-19 when they will be at Blue Mountain College, Blue Mountain, Miss.

Miss Ching visited in the United States

five years ago and at that time shared some of her experiences in many of the churches in Arkansas.

The sponsoring society is a religious body that works with blind people in America and internationally. They award one such scholarship every 10 years to enable a worker somewhere to update his or her knowledge and skills by visiting organizations and institutions in America and Canada. Miss Ching is the first blind worker ever to be awarded the scholarship.

In 1975 Miss Ching's name was included in Great Britain's Queen's Birthday Honors List and she was awarded an MBE (honorary) for distinguished social service to the public.

The story of Lucy Ching, who became blind at six months old, made up her mind at the age of eight to become educated and against all odds and in the

teeth of family apathy, achieved this extraordinary feat, has been told before.

The story that is less well known, but no less worth telling, is that of Ah Wor, Hong Kong's Annie Sullivan. She was employed as an amah by the Ching family when Lucy was born, and when the baby became blind, it was the illiterate amah — not the family — who proved to have the vision, the determination and the essential humanity to follow the precept that blindness does not mean uselessness. She set herself the task of seeing that Lucy grew up to be a happy, useful person, not an emotional cripple. Together, the blind child and the uneducated but wise woman learned how to live blind in a sighted and unsympathetic world.

Anyone wishing to contact Miss Ching and Ah Wor can contact Mrs. Joe Burns, Jonesboro, at 932-3396, or Mrs. Wes Smelley, Little Rock, at 225-2344.

## Arkansas all over

### Members build sanctuary

Antioch Church, Royal, dedicated a sanctuary and observed its 86th anniversary in services held on Sunday, Oct. 9.

The sanctuary, valued at approximately \$60,000, was constructed by men of the church. A total of \$38,631 has been paid toward the indebtedness.

Ernest Reynolds was building committee chairman. Committee members were William Eargle, Dwight Kinsey, John McCaslin, Bob Parker and Bill Smith.

Dick L. Cayce, pastor, emphasized that with the new building plans are being made to begin a church youth program. He said, "That building development areas within the community will provide people for future membership growth."

*Members of the Antioch Church did construction work on their building, which is valued at \$60,000. (ABN photo)*

**First Church, Salem,** is nearing completion of a new parsonage for their pastor, Jim Whitlock, and his family.

**Lee Chapel Church,** Central Association, building and property committee recently received church approval to remodel the east wing of the church and work began on Monday, Oct. 10. Plans include paneling and carpeting. This, along with the improvements made on the west wing by the ladies' classes, will give the church a completely remodeled interior.

## buildings

"God has given us this building," Cayce said in the dedication message, "but we, the members, are the church. Therefore, we must dedicate not just the building, but ourselves today."

"For no other foundation can man lay than for him to realize that the only true foundation is found in Jesus Christ," he continued. "With Christ as the foundation of our new building, we must continue to witness so that our church will grow."

Gaines Armstrong of Hot Springs, a former pastor, led the prayer of dedication.

Mrs. Maxine Kinsey gave a history of the Antioch Church, which held its organizational meeting in 1891 in a school house. At a conference on July

11, 1910, the church voted to build on the present site and a frame building was constructed. A stone building replaced it in 1940.

The first educational unit was built under the leadership of Everett Taylor, and the second unit was constructed under the leadership of Tommy Robertson.

Other pastors were J. A. Shackelford, J. R. Booth, W. L. A. Stranburg, F. P. Turner, J. W. Hulsey, S. A. Wiles, Lynwood Henderson, Charles Chesser, Marvin Hester, Johnny Irish, Robert Tucker and William Hewett.

Carl Overton, Director of Missions for Central Baptist Association, Armstrong, and Jesse Reed, Director of Evangelism for the Arkansas Baptist State Convention, were speakers for the afternoon and evening services.



# Earle church marks 75 years

A recommitment to represent a living Christ, in the future as in the past, was made by members of Earle First Church when they observed the church's 75th anniversary Oct. 2.

E. B. Abington of West Memphis, a former pastor, led the recommitment service in which he said, "Though we live in terrible days, I want to remind you that this battle culminated on the cross. Therefore, we, as Christians, should reflect in our daily walk a living Christ whose Holy Spirit dwells within us."

H. L. Lipford of Mabelvale, another former pastor, read scripture for the morning service. The church choir, directed by Karl Weathers, presented special music. Mary Cate Abington was guest soloist and was accompanied by her mother, Mrs. E. B. Abington.

Billy Rogers, Diamond Jubilee chairman, gave the history of the church which was organized in the fall of 1902 under the leadership of R. C. Medaris, an associational missionary. In 1911 Gordon Harris became the first full-time pastor.

Services of the church were held in an abandoned school building until 1915 when a new brick building was erected. In 1949 the church bought a city block and began a building program under the pastorate of Joe B. Sullivan.

The present building was constructed in 1959 under the leadership of Dr. Abington who then was pastoring the church for the second time.

Rogers, as he concluded the church history, said, "Let us pray through the organized efforts of present and future members of Earle Church that she will continue to be a lighthouse for all who seek the saving grace of our Lord and Saviour in this troubled 20th century."

The Diamond Jubilee weekend began with a dinner on Saturday evening with E. C. "Took" Gathings of West Memphis, a former member of the church who has been a United States Congressman, as guest speaker.

Others assisting with the Saturday evening event were Mrs. Virgil Edwards, Kinley Ray, J. E. Fullwood, Jack Brawley, Fred Arthur and Grady Franks. The church choir presented special music.

A fellowship luncheon was served at noon on Sunday and the weekend was concluded with Sunday evening worship services at which Robert F. Tucker, Director of Missions for Tri-County Association, was guest speaker.

Max Elms gave jubilee highlights and Rogers welcomed guests.

Monte G. Mills, pastor of the Earle Church, said, "The present outlook of

our church is bright. The opportunities in Earle are very challenging. While there is a great need to reach large numbers of people for Christ, we realize the need to grow a spiritual base to nurture the ones the Lord adds to his

church."

"With these truths in mind," he concluded, "discipleship will be the thrust and direction we take to accomplish the goals of reaching the lost and maturing each of us."



TOP PHOTO: Members of the church joined in a recommitment service at the end of the morning service as they celebrated their 75th anniversary.

BOTTOM PHOTO: A historical display recalled the past of the church's cradle roll program. The display was complete with an antique baby carriage. (ABN photos)



# Your state convention at work

## Looking ahead: Arkansas events

<u>October 1977</u>	COOPERATIVE PROGRAM MONTH
27	Church Training Convention, Immanuel, Little Rock
30	Great Day In The Morning!
<u>November 1977</u>	
3- 5	Marriage Enrichment Retreat, DeGray State Park Lodge (Church Training)
4- 6	International retreat (BSU)
6-12	Royal Ambassador Week in churches
7	State Royal Ambassador fellowship supper, Little Rock
7	Baptist Women's Day of Prayer (BWA)
8-10	ARKANSAS BAPTIST STATE CONVENTION, IMMANUEL, LITTLE ROCK
14-17	Area church recreation workshops (Church Training)
	14 - Central, Jonesboro
	15 - Calvary, Little Rock
	16 - First, El Dorado
	17 - Grand Avenue, Ft. Smith
20	Child Care Day
21-22	Weekday Early Education Workshop, Pulaski Heights, Little Rock (Sunday School and Missions)
<u>December 1977</u>	
1	Evangelism Workshop, Camp Paron
4-11	Week of Prayer for Foreign Missions and Lottie Moon Christmas Offering

## BSU Third Century Campaign

My first experience with the BSU was in 1929 while a student in the old Jonesboro Baptist College (now defunct). William Hall Preston, then Southside Secretary of the BSU, came from Nashville and helped us set up this organization on our campus.



Fitzgerald

There was an immediate favorable response to this new work. It was to help the students maintain a Christian witness on the college campus and act as liaison between the college and the local churches. The noon-day prayer meetings, the regularly scheduled campus revivals and the personal work on the campus with the lost, as well as efforts such as "Join The Church Sunday" for the Christian students were a tremendous influence for good. This not only gave an opportunity to carry out the Great Commission, but also resulted in a high level of conduct by the students on the campus.

Handicapped in those depression days by lack of funds, these very enterprising leaders did more with less than any group I have ever known. Today this organization not only is keeping up with all other phases of our Southern Baptist work, but in many ways is setting goals and examples that inspire and challenge our people to greater victories in the days ahead. Since we have given special emphasis to all other phases of our work from time to time, it seems to me that the BSU time has come. We must enlist the participation of all our people in this Third Century Campaign.

Since there are so many young people in the colleges of our state, this is a paramount opportunity to reach them. Now, more than ever, we need the two-fold thrust of BSU . . . "The Campus for Christ", and "liaison between the college and the local churches". While I was pastor in Jonesboro Walnut Street Church, I had such wonderful experiences with this organization on the local college campus.

Those great leaders of yesterday have now passed on. The torch has been thrown to us. Be it ours never to let down, but to carry it high for Jesus' sake until he comes. — James H. Fitzgerald, Retired Pastor, Paragould

## Recreation area workshops planned

Ray Conner, Secretary of the Church Recreation Department at the Southern Baptist Sunday School Board, Nashville, Tenn., will direct area workshops on Church Recreation in Arkansas



Conner

Nov. 14-18. Other workshop leaders include John LaNoue, Don Mattingly, Everett Robertson, Joy Robertson, Bob Sessoms, and Frank Hart Smith of Nashville.

There will be conferences on drama, sports, games, crafts, puppetry, camping, retreats and fellowships. The theme

of the workshops is "Using Recreation to Reach and Minister to People".

The workshop locations are as follows: Monday, Central Church, Jonesboro; Tuesday, Calvary Church, Little Rock; Wednesday, First Church, El Dorado; Thursday, Grand Avenue Church, Ft. Smith; and Friday, First Church, Fayetteville.

The Monday, Tuesday and Thursday workshops will be held 2:30-5:30 and 7-9:30 p.m. The Wednesday and Friday workshops will meet 9 a.m.-12 noon and 1:30-3 p.m.

Registrations should be sent to the Church Training Department of the Arkansas Baptist State Convention, P.O. Box 552, Little Rock, Ark. 72203.

## Child Care

### More on the offering

Now I know why as a pastor our church received so many Thanksgiving Offering envelopes through the mail. Why not send all in one package? The reason is that we are saving money. There is a maximum amount we can send in each package when we use our mailing permit. Also, each package must contain the same amount of materials. So we are making the best possible use

of our money.

Your church should have already received the offering envelopes for use in November. If you have not received these or if you need additional envelopes, please call 376-4791 or write us at P.O. Box 552, Little Rock, 72203. — Homer W. Shirley Jr., Director of Development, Arkansas Baptist Family and Child Care Services

# Why I support the Cooperative Program

(Fourth in a series of four)

I support the Cooperative Program because for over 50 years it has been blessed of God.

It is a common cliché among Southern Baptists to talk about the "blessings of God" when we want to sound pious. It may be that we sometimes give God credit for some things that he doesn't really want all that much credit for. Yet, notwithstanding that danger, history clearly reveals that God has abundantly blessed the work of Southern Baptists, and from a human practical standpoint we know that much of that work would never have been accomplished had we not pooled our resources as we do through the Cooperative Program.

During the last decade of the sixties, many youth in our country wanted to tear down our institutions, our organizations, our social structures and what they generally called "the establishment". In the seventies, many of those youth, perhaps most, have found that they had no better alternative, and "the establishment" was more success-

ful for them than they had been willing to admit.

Some would like to destroy the Cooperative Program just because it is 52 years old and they would like to see a change, but thus far no one has found a better method. I am not averse to change, but I want to make sure first that the alternative is an improvement. Since God has blessed us for 52 years, I find it difficult to argue with that success.

There is another aspect to this that is seldom seen in print. Southern Baptists have in their ranks some of the most capable scholars, most effective preachers, and most brilliant minds to be found anywhere on the face of the earth. It is inconceivable to me that these men and women, with their God-given intelligence and experience and ability, could not have found a better way of doing mission work than the Cooperative Program, if one were available. I simply do not believe that they would have kept it from us.

I know many of these persons per-

sonally, and with very, very few exceptions these giants among us are loyal, enthusiastic supporters of the cooperative way of Baptist mission work and particularly the Cooperative Program. If we believe that God works through human instrumentality, then we have to believe that God is saying something to us at this point.

A challenge has been placed before us and accepted by our convention to take the gospel to every person in every part of the world by the year 2000. I believe we can do it, and I am convinced that God will bless our efforts as we attempt to do it. It just may be that God has helped us to develop and refine our Cooperative Program for these past 52 years in preparation for the greatest challenge we have yet faced as a denomination.

I support the Cooperative Program for many reasons, but one of them is the fact that God has blessed it in the past and is continuing to bless it among Arkansas Baptists today. — Roy F. Lewis, Associate Executive Secretary

## The church budget: what makes a good budget?

W. E. Grindstaff in "Developing A Giving Church" said, "When churches learn that God is interested in budgets, they will begin to build bigger and better budgets for his glory."

A veteran in Biblical stewardship, Grindstaff went on to deplore what he called "haphazard methods" in church budgeting. He felt that one of the weakest links in Baptist church life was the church budget.

It takes more than an annual increase to have a good budget.

After discovering the ministry priorities of the church and several planning sessions in which the members seek the Spirit's leadership, the budget planning committee is ready to present a good budget to the church for discussion and adoption.

A good budget is centered around ministries. It looks at human needs and gives them the highest priority. Though everything a church does may result in proclaiming the gospel, some ministries relate more directly to the number one priority of a church. A good budget reaches out to the lost in the local community and extends the good news to all nations. It is "people", not "thing"

centered.

Good budgets challenge Christians. Economic realities of the seventies called for growing budgets. A budget that is the same today as it was two years ago doesn't give members a faith challenge. While a budget must be realistic, it is essential that it also be a faith projection. A challenging budget has a "what if" clause. "What if" all our members decided to become faithful stewards?

One or two members cannot put together a good church budget. A budget represents the entire membership and should involve the ideas and time of many members. More members commit themselves to budget support when they've had a word in the initial stages of budget planning.

Healthy budgets reflect a high morale and trust level in the congregation. Church members should not be suspicious when the budget is presented. Open facts encourage support. It isn't fair to have hidden items in the budget. A thousand dollar item for a summer missions shouldn't be hidden in youth activities.

Good budgets can be understood. A good budget is like a good sermon; it

spells things out so children can understand how much is being spent for each item. A complicated budget isn't a compliment to the financial genius of some member. A clear budget wins friends and gains support.

When a member receives a copy of the proposed budget, it's good if he says, "This is worthy of my commitment." Churches without budgets miss an opportunity to call their members to dedication. A budget based on minimum expectations usually accomplishes its goal.

Church budgets aren't something to be approved and then forgotten. A good budget lends itself to a perennial emphasis. It provides a gauge to measure Biblical stewardship practices in a church. It offers a monthly check-up.

The budget is a guide. It is a map for believers. It tells a church how it has voted to spend the Lord's money. It reveals a systematic plan of operation. It meets needs, and over a long period of time, fulfills visions.

Build a good budget and you'll help build a better church. — James A. Walker, Secretary of Stewardship

**BOLD  
BELIEVERS  
IN GIVING**

# Arkansas Baptist State Convention

## CONTRIBUTIONS

Total cash contributions received in office of Executive Secretary of  
Executive Board during the months of January through September, 1977.

Notify Charles H. Ashcraft, 525 West Capitol, Little Rock, Arkansas, if any errors are found in this report.

CHURCHES			CHURCHES		
COOPERATIVE PROGRAM			COOPERATIVE PROGRAM		
DESIGNATED GIFTS			DESIGNATED GIFTS		
MISCELLANEOUS RECEIPTS			MISCELLANEOUS RECEIPTS		
MISCELLANEOUS RECEIPTS		19,009.40	WARREN 1ST	23,019.53	7,339.25
ASSOCIATION TOTALS		19,009.40	WEST SIDE, WARREN	1,504.35	123.00
STATE AT LARGE			WILMAR	1,065.11	521.47
INDIVIDUAL RECEIPTS	759.28	24,761.37	SOUTHSIDE MISSION		56.11
ARK BAPTIST FOUNDATION	4,493.64	23,403.80	ASSOCIATION TOTALS	61,672.21	16,419.10
CLINTON 1ST	5,097.27	1,608.70	BENTON CO. ASSOCIATION		
EUREKA SPRINGS 1ST	3,481.23	707.00	BELLA VISTA	5,128.25	2,473.95
FAITH, BATESVILLE	864.21	227.82	BENTONVILLE 1ST	7,500.01	4,701.05
HALFMOON			CENTERTON 1ST	1,794.73	755.00
MALVERN 1ST	7,353.29	3,468.22	CENTRAL AVE., BENTONVILLE	1,343.41	526.95
RUSSELLVILLE 1ST	15,520.30	3,766.49	DECATUR 1ST	3,184.12	1,100.00
BERRYVILLE, 2ND	69.43	33.00	GARFIELD 1ST	875.84	599.59
FAITH, TEXARKANA	5,859.50	865.89	GENTRY 1ST	11,576.87	2,982.26
IMMANUEL, ELAINE	979.41	833.67	GRAVETTE 1ST	2,349.17	1,267.82
SOUTH SIDE, JONESBORO	561.93		GUM SPRINGS	1,437.93	250.00
CALVARY, WEST HELENA	632.42		HARVARD AVE., SILDOAM SPGS	7,902.30	772.31
BETHANY, MANILA	188.00	634.00	HIGHFILL 1ST	1,833.22	2,039.00
TEMPLE, W. MEMPHIS			IMMANUEL, ROGERS	7,103.21	2,901.39
FAITH, SILDOAM SPRINGS			LAKEVIEW	663.36	162.50
DENMARK, BRADFORD	165.00		LOWELL	1,792.05	363.00
LAKELAND			MASON VALLEY	1,652.59	1,770.79
ASSOCIATION TOTALS	46,024.91	60,309.96	MONTE NE	2,061.23	364.60
ARKANSAS VALLEY ASSN.			OPEN DOOR		998.40
BARTON	4,681.82	395.70	PARK STREET, BENTONVILLE	163.30	52.90
BRICKEYS	186.28		PEA RIDGE 1ST	5,716.58	1,540.68
BRINKLEY 1ST	10,727.98	12,197.44	PLEASANT HILL	558.66	
CHATFIELD	121.90		ROGERS 1ST	26,086.99	4,967.45
CLARENDON 1ST	5,653.88	1,896.13	SILDOAM SPRINGS 1ST	19,462.53	4,939.27
ELAINE	10,619.23	1,867.41	SUGAR CREEK	496.40	
FRIENDSHIP	651.22		SULPHUR SPRINGS 1ST	311.79	79.87
HELENA 1ST	16,343.79	2,880.22	SUNNY SIDE	2,360.31	535.02
HUGHES 1ST	6,273.23	5,349.84	TRINITY, ROGERS	249.10	
LAMBROOK 1ST	1,311.32	205.27	TWELVE CORNERS	643.80	140.00
LEXA	4,374.93	1,302.00	HICKORY CREEK MISSION		
MARIANNA 1ST	9,612.63	3,404.05	RO-LYNN	397.36	
MARVELL 1ST	3,593.70	139.46	ASSOCIATION TOTALS	114,645.11	36,283.80
MONROE	512.55		BIG CREEK ASSOCIATION		
NDRO	1,150.00	1,632.00	CHEROKEE VILLAGE 1ST	1,076.65	867.50
NORTH SIDE, HELENA	319.80		COUNTY LINE	18.00	18.37
PETTYS CHAPEL	632.66		ELIZABETH	18.00	
SNOW LAKE	449.25	382.94	ENTERPRISE	90.00	
TURNER	879.99	112.74	FLORA	96.00	
WEST HELENA	11,226.25	5,115.04	GUM SPRINGS	45.00	
WEST HELENA 2ND	4,941.51	1,775.48	MAMMOTH SPRING	109.19	209.50
BROADMOOR MISSION	798.66	611.25	MT. ZION	135.00	51.00
ASSOCIATION TOTALS	95,062.58	39,266.97	SADDLE 1ST	45.00	
ASHLEY CO. ASSOCIATION		150.00	SPRING RIVER	596.96	320.29
CALVARY, CROSSETT	508.10	269.49	VIOLA	267.44	
CORINTH	1,866.39	322.25	ASSOCIATION TOTALS	2,497.24	1,466.66
CROSSETT 1ST	52,433.10	10,571.82	BLACK RIVER ASSOCIATION		
CROSSETT 2ND	15.00	49.20	ALICIA	1,009.31	200.36
EDEN	611.99		AMAGON	180.00	
FELLOWSHIP	805.00	111.00	BANKS		
FOUNTAIN HILL 1ST	1,486.73	1,049.22	BLACK ROCK 1ST	1,313.52	241.60
GARDNER	1,198.51	212.37	CAMPBELL STATION	400.00	500.00
HAMBURG 1ST	14,460.93	3,720.72	CLEAR SPRINGS		
JARVIS CHAPEL	100.00		COLLEGE CITY	816.77	140.98
MAGNOLIA	6,412.43	2,644.62	DIAZ	320.00	413.40
MARTINVILLE	190.00	34.95	GRUBBS 1ST	623.70	62.65
HEREDIAN	1,740.00	330.38	HORSESHOE		
MT. OLIVE	16,172.83	2,385.21	HDXIE 1ST	1,224.00	710.69
MT. PLEASANT	995.50	236.05	IMBODEN 1ST	3,203.96	1,305.96
NORTH CROSSETT 1ST	3,078.98	1,038.58	IMMANUEL, NEWPORT	1,836.00	1,087.46
SARDIS	25.00		JACKSONPORT	681.00	
SHILOH	442.25	113.55	MURPHY'S CORNER	80.00	
TEMPLE	8,385.44	3,027.30	NEW HOPE #1, BLACK ROCK	260.03	50.00
UNITY			NEW HOPE #2, HARDY	171.71	50.00
ASSOCIATION TOTALS	110,728.18	26,266.71	NEWPORT 1ST	15,820.00	3,737.74
BARTHOLOMEW ASSOCIATION			OLD WALNUT RIDGE	504.79	222.21
ANTIUCH	73.55		PITTS	78.54	
COMINTO	9.00		PLEASANT RIDGE		
CORINTH	168.96	30.00	RAVENDEN 1ST	336.72	50.00
EAGLE LAKE	214.40		SEDGWICK	700.34	138.97
EBENEZER	812.97	174.00	SMITHVILLE	1,565.56	312.50
ENON	1,163.00	311.66	SPRING LAKE	848.69	117.69
FLORENCE	111.85	115.00	SHIFTON	1,012.41	485.12
HERMITAGE	800.09	194.00	TUCKERMAN 1ST	1,189.00	652.00
IMMANUEL, WARREN	11,461.23	2,495.79	WALNUT RIDGE 1ST	10,104.97	6,684.75
LADELLE	437.81		WHITE OAK	375.00	
MACEDONIA	150.00		BAPTIST CHAPEL	259.25	
MARSDEN			SOUTHSIDE	195.00	
MONTECELLO 1ST	13,092.18	4,093.05	ASSOCIATION TOTALS	45,110.27	17,164.08
MONTECELLO 2ND	5,467.45	676.77	BUCKNER ASSOCIATION		
NORTH SIDE, MONTECELLO	1,071.86	289.00	ABBOTT	211.49	45.00
OLD UNION	276.00		BATES	77.11	69.41
PLEASANT GROVE	60.00		CALVARY, BODNEVILLE		
PRAIRIE GROVE	74.00		CATHRON		
SALINE	430.18		CEDAR CREEK	61.33	
SELMA	148.69		CLARKS CHAPEL	50.00	135.25
UNION HILL	60.00		DAYTON	729.71	
			DENTON		
			EVENING SHADE	565.96	53.60
			FELLOWSHIP	372.53	482.68

CHURCHES	COOPERATIVE PROGRAM	DESIGNATED GIFTS	CHURCHES	COOPERATIVE PROGRAM	DESIGNATED GIFTS
FRIENDSHIP	36.00	2.41	PROSPERITY	450.81	
HARTFORD 1ST	4,987.89	1,183.79	SHADY GROVE	60.00	50.00
HAW CREEK	964.52		SOUTH SIDE, FORDYCE	676.50	59.20
HOM	604.99		SPARKMAN 1ST	10,354.75	5,248.50
HUNTINGTON 1ST	410.87	150.00	THORNTON 1ST	1,036.17	471.27
IONE		51.80	TINSMAN 1ST	135.00	
JAMES FORK	1,084.25	534.24	TULIP MEMORIAL	31.17	58.00
LONG RIDGE	474.43	184.32	WILLOW	54.00	84.75
MANSFIELD 1ST	4,267.37	1,826.87			
MIDLAND 1ST	2,039.65	261.19	ASSOCIATION TOTALS	41,865.48	9,177.98
NEW PROVIDENCE	169.95				
PARKS	535.04	292.81	CAROLINE ASSOCIATION		
PLEASANT GROVE #2, ABBOTT	335.44	80.00	AUSTIN STATION	1,533.00	160.38
PLEASANT GROVE #3, WALDRON			BAUGH CHAPEL	1,414.00	447.00
ROCK CREEK	165.73		BISCOE 1ST	2,290.94	337.75
SHILDH	30.00	60.00	BROWNSVILLE	889.52	266.19
TEMPLE, WALDRON	813.71	89.46	CABOT 1ST	25,477.91	6,003.04
UNION HOPE	304.00		CABOT 2ND	364.98	80.84
UNITY	140.43		CANEY CREEK	1,095.78	300.00
WALDRON 1ST	12,469.45	1,720.63	CARLISLE 1ST	16,007.11	1,394.51
WEST HARTFORD	256.27	333.51	CHAMBERS	89.75	55.00
WESTFIELD	424.78	107.00	COCKLEBUR	451.91	
CRUMPTOWN MISSION	277.26	74.72	GOY 1ST	1,316.58	397.00
BOLES MISSION	70.68	9.88	CROSS ROADS		
ASSOCIATION TOTALS	32,930.84	7,748.57	DES ARC 1ST	14,408.54	1,376.10
			DEVALLS BLUFF 1ST	899.34	42.49
BUCKVILLE ASSOCIATION			ENGLAND 1ST	11,838.87	1,912.10
CEDAR GLADES		618.11	HAZEN 1ST	11,221.08	2,312.44
CONCORD			HUMNOKE 1ST	566.40	88.00
MT. TABOR	166.00		IMMANUEL, CARLISLE	836.30	497.32
ROCK SPRINGS	679.01		KEO	2,065.62	2,750.00
ASSOCIATION TOTALS	845.01	618.11	LONOKE	18,374.32	6,248.46
			MT. CARMEL	6,596.57	854.80
CADD RIVER ASSOCIATION			MTN. SPRINGS	1,398.22	563.78
AMITY 1ST	900.00	107.00	NEW HOPE	357.82	
BLACK SPRINGS	45.00	50.00	OAK GROVE	629.17	431.45
CADD GAP	50.00		OLD AUSTIN	686.73	240.81
GLENWOOD 1ST	6,073.07	2,435.92	PLEASANT HILL	776.07	322.52
HILL SIDE	70.00		STEEL BRIDGE	169.57	302.05
LAKE OUACHITA	414.59	129.50	TOLTEC	6,657.30	2,738.45
LIBERTY			WARD 1ST	3,376.47	690.13
LITTLE HOPE	200.00		WATTENSAH	3,894.79	2,021.85
MT. GILEAD	180.50				
MT. IDA 1ST	6,816.79	1,691.68	ASSOCIATION TOTALS	135,684.66	32,834.46
MT. OLIVE	152.37				
MURPHY			CENTENNIAL ASSOCIATION		120.00
NORMAN 1ST	552.00	228.89	ABERDEEN 1ST	358.12	63.20
OAK GROVE		22.00	ALMYRA 1ST	17,806.72	4,622.18
ODEN 1ST	556.00	277.00	DEWITT 1ST	6,600.00	5,950.50
PENCIL BLUFF	606.35	179.00	EAST SIDE, DEWITT	17.69	40.00
REFUGE	63.00	100.00	GILLETT		
SULPHUR SPRINGS	222.52	312.55	GILLETT 1ST	408.11	213.60
PINE RIDGE	32.20		HAGLER	382.46	
ASSOCIATION TOTALS	16,934.39	5,533.54	NORTH MAPLE, STUTTGART	2,865.66	953.81
			REYDELL	272.03	1,112.00
CALVARY ASSOCIATION			SOUTH SIDE, STUTTGART	654.82	1,052.72
ANTIOCH	350.00	400.00	ST. CHARLES	2,683.05	257.50
AUGUSTA 1ST	9,024.85	10,878.57	STUTTGART 1ST	26,000.00	9,322.42
BEEBE 1ST	5,902.57	4,428.64	TIGHNOR	60.00	120.00
BETHANY	300.00		NORTHSIDE MISSION	169.89	305.83
CENTRAL, BALD KNOB	7,531.73	4,258.06			
COTTON PLANT 1ST	2,044.70	1,356.00	ASSOCIATION TOTALS	58,278.55	24,133.76
CROSBY	225.00	90.00			
EL PASO	225.00	145.25	CENTRAL ASSOCIATION		
GOOD HOPE	238.22		ANTIOCH	974.95	208.25
GRACE	1,011.38	533.74	BENTON 1ST	20,832.45	12,047.12
GREGORY	850.00	100.00	BRYANT 1ST SOUTHERN	7,380.96	3,570.00
GRIFFITHVILLE 1ST	225.00	293.81	BUIE	191.04	
HIGGINSON	1,928.26	1,477.02	CALVARY, BENTON	8,042.79	3,131.47
HUNTER 1ST	1,367.80	566.51	CENTRAL, HOT SPRINGS	10,301.67	4,318.69
JUDSONIA 1ST	4,091.45	3,827.66	EMMANUEL, HOT SPRINGS	1,533.85	397.21
KENSETT 1ST	3,276.55	680.32	FAIRDALE	986.77	502.79
LIBERTY	126.00	230.00	FAITH, BENTON	385.91	13.98
MCCRORY 1ST	2,666.96	1,204.00	GILEAD	267.52	149.15
MGRAY 1ST	270.00	1,722.00	GRAND AVENUE, HOT SPRINGS	1,960.61	6,760.31
MIDWAY	369.96	74.00	GRAVEL HILL	871.72	
MORROW	240.44	31.20	HARVEYS CHAPEL	2,935.65	1,162.46
MORTON	581.88	81.28	HIGHLAND HEIGHTS	13,407.91	6,906.72
MT. HEBRON	407.45	143.00	HILLDALE, ALEXANDER	1,497.57	107.00
PANGBURN 1ST	2,234.26	90.00	HOT SPRINGS 1ST	9,000.00	9,519.51
PATTERSON 1ST	220.04		HOT SPRINGS 2ND	28,254.53	8,842.86
PLEASANT GROVE	424.65	90.00	HURRICANE LAKE	2,070.72	217.00
PLEASANT VALLEY	285.65	51.00	INDIAN SPRINGS	491.91	123.00
RAYNOR GROVE	355.00	90.00	JESSIEVILLE	929.89	123.63
ROCKY POINT	427.62	180.90	LAKE HAMILTON	2,384.91	1,178.50
ROSE BUD	1,617.42	710.38	LAKESHORE HEIGHTS	2,229.50	1,150.05
SEARCY 1ST	30,418.05	8,338.39	LAKESIDE	2,653.00	458.33
SEARCY 2ND	1,086.06	218.32	LEE CHAPEL	1,933.30	288.96
TEMPLE, SEARCY	7,774.88	2,585.13	LEONARD ST., HOT SPRINGS	1,840.00	180.00
TRINITY, SEARCY	2,175.58	1,359.80	LONSDALE	364.16	
TUPELO 1ST	1,151.83	634.28	MALVERN 3RD	10,682.26	1,980.07
UNION VALLEY	418.77		MEMORIAL	2,278.80	385.43
WEST POINT	457.74		MILL CREEK	619.31	261.00
VALLEY CHAPEL	975.47	194.00	MOUNTAIN PINE 1ST	2,491.63	535.64
ROYAL HILL	80.04		MOUNTAIN VALLEY	467.99	133.07
ASSOCIATION TOTALS	93,358.26	47,063.26	MT. VERNON	636.88	228.37
			OLD UNION	1,648.59	
CAREY ASSOCIATION			OWENSVILLE	1,027.00	130.00
BEARDEN 1ST	3,491.14	943.00	PARK PLACE	13,433.92	2,661.69
CHAMBERSVILLE			PEARCY	596.00	186.80
CALVARY, CAMDEN	1,598.20	256.05	PERLA		
DALARK	242.97	102.51	PINEY	6,433.72	964.34
EAGLE MILLS			PLEASANT HILL	1,597.52	900.06
FAITH	709.00	110.00	RECTOR HEIGHTS	931.41	426.00
FORDYCE 1ST	16,969.99	833.70	RIDGECREST	1,049.00	384.37
HAMPTON 1ST	4,127.38	479.50	RIVERSIDE	1,436.54	397.50
HARMONY	71.78		SALEM	2,590.51	57.00
HOLLY SPRINGS	545.58		SHERIDAN 1ST SOUTHERN	1,440.54	417.00
MANNING	551.88	210.00	SHUREWOOD HILLS	798.24	208.00
NEW HOPE	495.16		TRINITY, BENTON	3,993.54	1,041.00
OUACHITA	264.00	271.50	TRINITY, MALVERN	2,959.37	1,307.81
			VISTA HEIGHTS	717.56	82.86
			WALNUT VALLEY	1,339.66	368.57
			BARCELONA ROAD MISSION	1,234.26	170.00



CHURCHES	COOPERATIVE PROGRAM	DESIGNATED GIFTS	CHURCHES	COOPERATIVE PROGRAM	DESIGNATED GIFTS
NINTH STREET MISSION			ASSOCIATION TOTALS	13,475.46	9,588.94
SOUTH CALVARY MISSION	1,479.18	241.72	CURRENT-GAINS ASSOCIATION		
ASSOCIATION TOTALS	185,606.72	74,825.29	BIGGERS	1,263.80	606.88
CLEAR CREEK ASSOCIATION			BROWN'S CHAPEL		15.00
ALMA 1ST	14,029.63	6,849.86	CALVARY, CORNING	1,371.01	1,307.75
ALTUS 1ST	157.53	100.00	COLUMBIA JARRETT	103.00	
BATSON	357.00	232.00	CORNING 1ST	3,445.77	2,198.41
CASS	151.77	50.00	EMMANUEL, PIGGOTT	295.40	419.74
CEDARVILLE	1,323.89	668.86	GREENWAY 1ST	901.00	744.95
CLARKSVILLE 1ST	8,772.06	3,698.99	HARMONY	226.42	235.50
CLARKSVILLE 2ND	1,291.33	525.91	HOLLY ISLAND	478.00	306.67
COAL HILL 1ST	579.61		HOPEWELL	648.25	360.07
CONCORD	4,180.54	1,933.86	KNOBEL 1ST	395.50	55.00
DYER 1ST	568.18		MOARK	337.45	28.50
EAST MT. ZION, TRINITY	553.21	82.00	MT. PLEASANT	202.75	50.00
HAGARVILLE	470.35		NEW HOPE	1,871.49	708.15
HARTMAN 1ST	625.38		NIMMONS 1ST	35.00	35.00
KIBLER	5,111.96	1,700.00	OAK GROVE	742.00	243.75
LAMAR	1,724.33	823.64	PEACH ORCHARD 1ST	23.40	
MOUNTAINBURG 1ST	1,004.20	131.00	PETIT, DISBANDED		
MULBERRY 1ST	7,524.41	1,089.97	PIGGOTT 1ST	12,673.81	4,142.07
DAK GROVE	3,384.00	730.55	POCAHONTAS 1ST	5,644.08	2,866.96
OZARK 1ST	8,822.58	1,826.36	RAVENDEN SPRINGS 1ST	364.82	132.11
OZDNE	963.90	266.15	RECTDR 1ST	6,045.00	2,221.94
RUDY	204.11		REYNO 1ST	992.57	187.25
SHADY GROVE	245.85		SHANNON	1,353.34	358.69
SHIBLEY	529.86		SHILOH, CORNING	160.00	81.90
SPADRA			ST. FRANCIS	1,800.00	1,369.37
TRINITY, ALMA	325.00		SUCCESS 1ST	1,107.95	448.73
UNION GROVE	626.98	157.42	TIPPERARY	273.80	
UNIONTOWN	968.57		WITT'S CHAPEL	908.63	589.50
VAN BUREN 1ST	16,975.00	8,641.30	ANTIUCH	23.48	
VAN BUREN 2ND	352.54	57.56	ASSOCIATION TOTALS	43,687.72	19,693.89
VINE PRAIRIE	770.62	635.25	DARD-RUSS ASSOCIATION		450.00
WEBB CITY	925.36	160.75	ATKINS 1ST	2,243.22	1,058.27
WOODLAND	100.00	125.00	BAKERS CREEK	455.68	
CENTERCROSS MISSION			BLUFFTON	274.25	101.00
1ST BAPTIST MISSION			CENTERVILLE	514.18	140.50
ASSOCIATION TOTALS	83,619.75	30,486.43	DANVILLE 1ST	4,062.86	2,752.00
CONCORD ASSOCIATION			DARDANELLE 1ST	8,311.08	2,758.03
BARLING 1ST	2,561.95	696.80	DOVER	641.98	416.81
BETHEL	1,858.55	180.61	EAST POINT	856.18	140.55
BLOOMER	90.00	100.00	FAIR PARK	117.00	239.87
BLUFF AVE., FT. SMITH	4,253.43	772.83	GRACE MEMORIAL	166.00	174.00
BOONEVILLE 1ST	8,190.63	2,208.17	HAVANA	329.33	241.62
BRANCH	1,833.82	673.50	HECTOR 1ST	256.60	473.99
BURNSVILLE		50.00	HOPEWELL	428.51	75.00
CALVARY, FT. SMITH	8,051.51	4,960.83	IMMANUEL, RUSSELLVILLE	585.00	
CHARLESTON 1ST	7,200.23	1,960.36	KELLEY HEIGHTS	490.21	88.60
EAST SIDE, FT. SMITH	15,320.20	3,145.81	KNOXVILLE	1,155.48	397.50
ENTERPRISE			LONDON 1ST	1,490.42	400.05
EXCELSIOR	358.18	50.00	MORELAND 1ST	220.86	102.63
FORT SMITH 1ST	81,999.29	30,479.47	NEW HOPE	894.50	66.50
GLENDALE	824.60	79.00	OLA 1ST	2,408.50	752.85
GRAND AVENUE, FT. SMITH	75,480.98	33,063.85	PITTSBURG	30.00	
GRAYSON			PLAINVIEW 1ST	599.18	455.00
GREENWOOD 1ST	10,924.00	3,017.00	PLEASANT VIEW	245.48	94.00
HACKETT 1ST	461.73		POTTSVILLE	627.30	185.51
HAVEN HEIGHTS	6,478.00	1,746.50	ROVER	397.02	
HIGHWAY 96 1ST			RUSSELLVILLE 2ND	5,350.16	2,687.86
IMMANUEL, FT. SMITH	13,527.75	2,743.00	ASSOCIATION TOTALS	33,150.98	14,252.14
JENNY LIND 1ST	4,542.82	1,088.42	DELTA ASSOCIATION		
LAYACA 1ST	8,088.47	3,284.76	ARKANSAS CITY	3,744.82	1,138.25
MAGAZINE 1ST	1,771.17	230.60	AULDS	689.40	171.34
MEMORIAL	183.55	170.00	BELLAIRE	2,157.89	1,330.00
NIXON	276.96	335.75	BOYDELL	130.01	
MT. HARMONY	66.54	66.54	CHICKASAW	705.26	141.76
MT. ZION		150.00	COLLINS	2,753.00	350.00
NEW HOPE	2,964.87	503.00	DANIEL CHAPEL		
NORTH SIDE, CHARLESTON	358.03	1,174.43	DERMOTT	9,861.27	11,601.56
NORTH SIDE, FT. SMITH	1,687.30	643.67	EUDORA	7,038.00	2,456.59
OAK CLIFF	4,320.63	1,557.19	GAINES	58.71	86.19
PALESTINE	503.74	498.13	JENNIE	841.32	137.00
PARIS 1ST	9,299.47	4,771.51	JEROME	331.21	454.35
PHOENIX VILLAGE	3,223.67	1,191.21	KELSO	1,580.18	824.40
PINE LOG	200.45		LAKE VILLAGE	2,919.44	1,709.50
RATCLIFF 1ST	997.45	290.09	MCCARTHR		
ROSEVILLE	155.24	430.16	MCGEEHEE 1ST	17,865.57	5,249.82
RYE HILL	2,248.45	782.49	MONTROSE	1,474.28	366.00
SCRANTON 1ST	1,393.92	133.23	NEW HOPE	1,890.92	125.00
SOUTH SIDE, BOONEVILLE	1,008.31	216.16	NORTH SIDE, EUDORA	1,076.30	580.00
SOUTH SIDE, FT. SMITH	2,438.48	1,271.96	OMEGA	256.62	5.30
SPRADLING	930.00	804.57	PARKDALE	80.00	165.00
TEMPLE, FT. SMITH	2,751.94	1,349.62	PARKWAY	785.00	41.10
TRINITY, FT. SMITH	2,489.90	1,069.92	PORTLAND	4,475.97	2,099.76
UNION HALL			RICHLAND	293.42	45.55
VESTA			SHILOH	1,025.43	79.18
WINDSOR PARK			SOUTH MCGEEHEE	552.80	475.00
DELAWARE	1,072.69	3,150.00	TEMPLE, DERMOTT	3,255.97	
MOFFETT MISSION		68.50	TILLAR 1ST	1,180.12	560.90
WESTSIDE	782.48	192.50	WATSON	1,273.47	36.00
ASSOCIATION TOTALS	293,171.38	111,352.14	WILMOT	3,185.70	1,140.00
CONWAY-PERRY ASSOCIATION			ASSOCIATION TOTALS	71,482.08	31,369.55
ADONA, DISBANDED			FAULKNER CO. ASSOCIATION		
BIGELOW	719.23	370.75	BERYL	2,464.79	513.52
CASA 1ST	415.99	123.84	BONO	90.00	27.05
HARMONY	862.69	339.31	BRUMLEY CHAPEL	1,136.84	194.00
HOUSTON	88.05		CADRON RIDGE	389.97	352.75
MORRILTON 1ST	5,337.74	3,110.50	CONWAY 1ST	11,355.17	5,728.60
NIMROD 1ST	1,007.62	457.78	CONWAY 2ND	11,300.74	2,273.84
PERRY	90.00		EMMANUEL, CONWAY	376.18	
PERRYVILLE 1ST	950.00	2,279.28	ENOLA	201.49	
PLEASANT GROVE	150.00	25.00	FRIENDSHIP	624.86	126.49
PLUMERVILLE 1ST	900.00	1,250.70	HAPPY HOLLOW	149.00	153.00
SOLGDACHIA	195.78	100.00	HARLAN PARK	3,539.18	1,178.25
STONY POINT	42.92		HARMONY	410.15	332.80
THORNBURG	1,050.60	429.90	HOLLAND	802.02	569.19
UNION VALLEY	1,018.84	1,006.88			
OPPELO	646.00	95.00			







CHURCHES	COOPERATIVE PROGRAM	DESIGNATED GIFTS	CHURCHES	COOPERATIVE PROGRAM	DESIGNATED GIFTS
ANGORA	53.01		PROVIDENCE	1,206.48	99.85
IMMANUEL, CLINTON	444.01	100.00	RIDGEVIEW		41.00
VAN BUREN CO. ASSOCIATION		949.40	ROLLING HILLS	2,770.96	927.25
BEE BRANCH	753.54		SILENT GROVE	553.66	185.11
BOTKINBURG	22.50		SONORA	799.98	776.73
CORINTH	78.83		SOUTHSIDE, FAYETTEVILLE	350.13	39.37
FORMOSA	541.04	446.16	SPRINGDALE 1ST	48,012.80	22,418.93
FRIENDSHIP	1,207.18	445.35	SPRING VALLEY	364.39	20.00
LEXINGTON	289.08		SULPHUR CITY	859.80	319.03
PEE DEE	536.09	35.00	UNIVERSITY, FAYETTEVILLE	13,500.00	13,657.16
PLANT	106.64		WEST FORK	1,930.49	736.90
PLEASANT VALLEY	161.09		WINSLOW	1,692.30	757.93
RUPERT	635.10	20.00	SANG AVENUE BAPTIST MSSN	310.68	
SCOTLAND	907.52	126.69			
SHADY GROVE	485.30		ASSOCIATION TOTALS	140,971.55	74,021.85
SHIRLEY	414.07	132.20	WHITE RIVER ASSOCIATION		
STANDLEY MEMORIAL	80.00	525.00	ANTIOCH	50.62	
ZION	186.55	13.93	ARKANA		
FAIRFIELD BAY MISSION	1,821.14	714.00	BRUND	292.75	
ASSOCIATION TOTALS	8,722.69	3,507.73	BULL SHOALS 1ST	786.73	155.00
WASHINGTON-HADISON ASSN.			COTTER 1ST	1,692.97	1,349.03
BERRY STREET, SPRINGDALE	2,090.69	535.93	EASTSIDE, MOUNTAIN HOME	4,589.25	1,671.93
BLACK OAK	315.00	461.00	FLIPPIN 1ST	1,382.63	733.60
BRUSH CREEK	1,355.38	345.15	GASSVILLE	2,176.16	1,416.60
CALVARY, HUNTSVILLE	511.65	207.00	HENDERSON 1ST	466.77	75.22
CAUDLE AVENUE, SPRINGDALE	3,326.11	700.18	HOPEWELL	169.77	183.00
COMBS	75.00		LONE ROCK		25.00
ELKINS	185.00		MIDWAY	1,219.78	330.00
ELKINS 1ST	1,569.08	24.08	MOUNTAIN HOME 1ST	16,871.60	9,127.34
ELMDALE	16,499.27	10,419.65	NEW HOPE	570.99	
FARMINGTON 1ST	2,456.70	129.75	NORFORK 1ST	825.00	
FAYETTEVILLE 1ST	21,079.51	15,850.69	OAK GROVE	180.00	
FAYETTEVILLE 2ND	550.74	143.25	PILGRIMS REST	534.03	378.73
FRIENDSHIP	50.30		PYATT	267.40	
GREENLAND 1ST	842.35	334.20	REA VALLEY	926.50	466.97
HINDSVILLE	1,032.00	211.89	SUNMIT	212.61	23.00
HUNTSVILLE 1ST	1,381.92		TOMAHAWK	383.56	138.62
IMMANUEL, FAYETTEVILLE	6,587.73	1,681.42	WHITEVILLE	3,192.92	1,667.73
JOHNSON	1,073.02	352.00	YELLVILLE		
KINGSTON 1ST SOUTHERN	958.53	73.01	BIG FLAT MISSION	45.28	
LIBERTY	1,535.17	421.20	EROS MISSION	299.46	39.00
LINCOLN 1ST		469.10	HILL TOP	419.83	45.00
NEW HOPE			PEEL		
OAK GROVE	959.22		ASSOCIATION TOTALS	37,979.82	17,825.77
PRAIRIE GROVE 1ST	4,185.51	1,083.09	GRAND TOTAL	4,010,154.43	1,644,657.27

# BOLD BELIEVERS IN GIVING

## AVAILABLE

Books Of The Late  
**DR. J. P. McBETH**

- |   |        |
|---|--------|
| 1. Twenty-third Psalm .....                             | .50    |
| 2. Heaven .....   | .50    |
| 3. Security of the Believer in Substitution .....       | .25    |
| 4. Fall of Nature and Human Nature .....                | \$1.00 |
| 5. Origin of the Devil and the Battle of the Ages ..... | \$1.00 |
| 6. Inspiration of the Scriptures .....                  | \$1.00 |
| 7. Security of Believer as Seen in Noah's Ark ..        | \$1.00 |
| 8. Commentary on Romans .....                           | \$5.00 |

Order From

MRS. J. P. McBETH  
1806 Sylvia  
ARKADELPHIA, AR 71923



## a Christmas keepsake cassette

Dedicated to the Lord and consecrated to His purpose

Receive the word — an inspirational Christmas message by the distinguished Dr. W. A. Criswell (side 1). The Story of Christmas, a stirring, spiritual narration by Hal Tunis with carols and hymns — a biblical reminder of the Joy of Christmas (side 2).

This cassette is an ideal remembrance to have and to give. Kindly allow 2 weeks for delivery.

### TO ORDER:

Send check or money order in the amount of \$7.99 (this includes handling and postage) to: THE STORY OF CHRISTMAS, Viveca Inc., P.O. Box 30332, Dallas, Texas 75230.

(Please print or write clearly)

## Bumper stickers

Can print anything on 1, 2 or 3 lines. Write for group rates.

Bumper Stickers  
Rt. 5, Box 591  
Russellville, Ark. 72801

## COMPLETE DOMESTIC AND INTERNATIONAL SERVICE

- Airline Tickets • Steamship • Auto Rentals
  - European Rail Passes • Hotel Reservations
- CRUISES • CHARTERS GROUP TRAVEL**  
Package Tours • Commercial Accts.

There is No Charge For Our Service

**R.S. "BOB" PETERS JR.**

Travel Agency

Branch of Dan Dipert Tours

2813 Kavanaugh • Phone (501)666-0242 • Little Rock

## Giving your best

Luke 12:41-48;  
James 5:1-6

Recently the news media reported the result of an investigation into a tragic fire which claimed numerous lives. Investigators cited improper fire prevention precautions in the structure itself, heard testimony from employees regarding the overcrowding at certain peak times of business, and a lack of control and proper procedure in getting people out of the building after the fire had been discovered. They found that the owners were negligent in their responsibility to care for the safety of their customers. The conclusion is drawn that the tragedy and deaths could have been avoided had those responsible taken the time to meet the proper standards of safety.

This tragic scene is repeated over and over again in our modern, fast-paced society. "Time is money," many say, excusing their rush to make it as soon as possible, disregarding the standards in the process. Their value systems do not include the quality and sanctity of life or the value of time itself.

Time is a precious commodity and yet few people realize the importance of making every moment of it count. Countless years are wasted in a mad dash to get what cannot be kept, to build up what will certainly be destroyed, and to gain what will be lost in God's system of eternal values.

The Bible speaks often on the need for establishing a proper respect for the time that is allowed man to "get into step with God." The warning to be ready when God brings down the final curtain on life as we know it is a major theme of the New Testament. To be ready one must consider God's control of time, his purpose for it, and his standards of value. Only by applying these can one expect to meet eternity's new social order with confidence.

In the scripture passages just preceding the text for this lesson from the book of Luke, Jesus refers to the uncertainty of time and the importance of being prepared for his appearance. His



Dr. Bryant

first picture is that of servants awaiting the arrival of their master after his wedding. He calls them blessed who are faithful to watch for his arrival, and they are given the special privilege of participation in the feast to follow, with their lord serving the meal (Luke 12:37). In another passage which uses the picture of the arrival of a wedding party, Jesus also referred to his coming as uncertain as the tarrying of a bridegroom. In this picture there were 10 virgins who took their lamps and went to wait for him. Five are found to be foolish for though they took their lamps, they took no oil and their lamps dimmed and went out while they waited. Such is the plight of many today who give little consideration to the value of time and the uncertainty of it (Matt. 25:1-13).

The second picture that Jesus used in the 12th chapter of Luke is that of a thief who breaks in to steal (12:39). The extreme nature of this act emphasizes dramatically the further uncertainty of the arrival of the Lord Jesus. There are many today, as there have been in every period of history, who fail to grasp the significance of what Jesus is saying. They become so caught up in the world's idea of what is real and worthwhile that any warning to the contrary falls upon deaf ears. For these who would say, "I've got time, I'll wait until I'm old to get religion," Christ will come as a thief in the night and signal the theft of all they have reaped, and judgement will be the motive of the theft which takes place.

The scripture passages for the lesson point out some further results of respect for and readiness in God's time plan, as well as the results of wasted time and misguided values.

### Faithful readiness (Luke 12:41-44)

It goes without saying that God is completely trustworthy regarding the promised coming of the Lord Jesus. The promise has been given in order that man might have an additional impetus to put his house in order and live according to God's standards of value. Jesus declared that the steward-servant

who was wise enough to take his master at his word and was faithful to carry out his assigned tasks would find that his position would be greatly increased. The terms, "faithful" and "wise," describe a servant who is the perfect example of what an obedient and loyal steward should be. The properties and possessions in his care were not his own, but belonged to his master, who alone had authority over them.

The parable shows us that the man who faithfully and wisely remembers his position of stewardship over that which only belongs to God, is the man who will receive the highest honor that any man on earth can expect. While many strive for the temporary gain of the world according to the value system of man, this man will gain the rulership of the whole world for an eternity.

### Unfaithful readiness (Luke 12:45-48; James 5:1-6)

The servant viewed in verse 45 shows a markedly different attitude regarding the departure of his master. Rather than a privilege to be respected, this temporary freedom finds him madly taking advantage of his authority, his lord's property, and the servants in his care. He acts rather like a young child left at home alone to do whatever his immature mind may dictate.

James also portrays those who have been given riches and labourers to oversee. They have misused and abused all they have been given in a mad dash for fleshy pleasure, causing their charges to painfully cry out to the Lord (5:4-5).

Those described in these passages had the same opportunities to be faithful over the "few things" which their Lord had delivered to them. However, because of their lack of respect for the responsibility placed in their hands, they misuse their office to consume it upon their flesh. Unwisely, a man in this position has sought to possess what he cannot keep and in doing so has unfaithfully declared himself not the servant but the master. This will not bring the blessing of great honor but a judgement which removes all honor. Jesus said that the man who would be great must be the servant (Matt. 20:26), and the servant who would be blessed must give his best in faithful readiness for his lord's return.

The Outlines of the International Bible Lesson for Christian Teaching, Uniform Series, are copyrighted by the International Council of Religious Education. Used by permission.

## Calling to new life

Oct. 30, 1977

John 3:1-15

New! Novel, modern, original, and fresh are the synonyms for "new" that Webster lists. They all have various shades of meaning. Webster gives the following uses: "new" could mean something that has not been experienced before; "novel" applies to what is not only new but unprecedented; "modern" applies to what belongs to the present time; "original" refers to the first of its kind to exist; "fresh" applies to what has not lost its qualities of newness such as liveliness, energy and brightness.

All these are characteristic of the New Birth. In this familiar passage of scripture Jesus sets down the major theological cornerstone of his mission on earth. Faith in him is the one necessary trait for the experience of salvation which we call being born again.

### Necessity of new birth

Jesus left no doubt as to the necessity of the new birth. In verses three and five he emphasizes to Nicodemus that without spiritual birth no person could enter the kingdom of God.

The reasons for this necessity are also clear in the scripture. God's spiritual blessings are for his spiritual children only (Romans 8:16-17). Spiritually and morally man is a child of the Devil (John 8:44). Man is spiritually dead and God's kingdom is spiritual in nature (Romans 5:12). Being in God's kingdom implies submission to the rule of God and man by nature is at enmity with God (Romans 8:6-9).

Nicodemus, being a very practical man, did not understand how this new birth could happen. He did not understand the nature of this experience.

### Nature of new birth

The new birth is not an eradication of the old sin nature. Rather a new heart is placed along side the old (Gal. 5:17). So, the Christian has two natures at work in him (Romans 7:14FF).

The new birth is not human reformation. Just deciding to live better will not succeed. When a person turns over a new leaf he usually finds that the leaf looks just alike on both sides.

The new birth is a supernatural, instantaneous work of God in the soul of



Pike

an individual. Jesus stated in verses five and eight that this new birth is spiritual and therefore from God. It is not a work of man nor is it a result of any works which man can do. Nicodemus was a Pharisee. The Pharisees were a very strict group of Jews who had dedicated themselves to follow the detailed interpretations of the mosaic law as listed by the scribes. Nicodemus thought in terms of what he could do to live a better life and he could not grasp a salvation experience which was not based on works. His question, "How can these things be?" showed his puzzlement over what Jesus had told him.

### Experiencing new birth

There is no record that Nicodemus ever became a Christian. The Bible just does not give an answer. The background of Nicodemus was one of prestige. He was a member of the Sanhedrin, the supreme court of the Jews. He was also a trained theologian as evidenced in the use of the term "teacher of Israel" (3:10). Everything he had been taught was different than that which Jesus said was true.

Jesus implied that the new birth was not accomplished by education or culture. Education or culture cannot bring out of a man that which is not in him in the first place. Nicodemus had education and was refined culturally, but Jesus said this was not enough.

Some have made the reference of Jesus to water a basis for their contention that baptism is necessary for salvation. Jesus in no way indicated this to be true. Baptism is a physical act and a physical act can never bring about a spiritual change. It cannot remove sin. Faith must proceed baptism. I wear a wedding ring because I am married, not in order to be married. We are baptised because we are saved not in order to be saved.

If we experience the new birth it is because the Holy Spirit has done a work of regeneration within us (Romans 8:11). Salvation is a gift of God according to his rich grace toward us. When we acknowledge that we are a sinner, confess our sin and repent them then the Holy Spirit will work that work of regeneration within us.

This lesson treatment is based on the Life and Work Curriculum for Southern Baptist Churches, copyright by The Sunday School Board of the Southern Baptist Convention. All rights reserved. Used by permission.

### Evidences of new birth

In people who have experienced the new birth there are certain evidences of this experience. They exhibit a daily trust in Christ. They evidence an indwelling of the Spirit (Romans 8:14-16). They are ready to accept and hear God's word (John 8:47). They have a love for God (1 John 4:19). They have a love for their fellowman (1 John 3:13-16).

### Duration of new birth

Jesus said that those who believed in him would have eternal life (v. 15). The word eternal is better here than everlasting. It indicates a quality of life in addition to referring to the duration of the relationship. The scripture teaches that the new birth experience is an eternal experience. It cannot be lost or changed. God reaches down and takes hold of our hand and God will never let go! It is the height of human arrogance to think that man can undo what God has done. Jesus said that no man or power could pluck his children out of his hand. When we are his we are his for eternity.

New? Novel? Modern? Original? Fresh? Yes, the new birth is all of these and more. It is unchanging and eternal.

### PEW CUSHIONS

Comfort and beauty. At prices your Church can afford.

For free estimate contact

**FLOWERS CUSHION SERVICE**  
P.O. Box 587, Keene, Tex. 76059  
Phone: A-C 817 645-9203

Clean used church buses

### J & M Motors

Hwy. 65, South  
Conway, Ark.

329-6634 or 329-6176

### Holy Land Tour

Plus Switzerland, Belgium and Germany. 11 days. Departs March 14, 1978.

Join Donald E. Wildmon on his 12th tour of the Holy Land. Send your minister. Write for free brochure.

### Five Star Tours

Box 1398, Tupelo, Miss. 38801  
Phone 601/844-5036

## A smile or two

"Why was Solomon the wisest man in the world?" the Sunday School teacher asked. One of the listeners answered: "Because he had so many wives to advise him."

□

Emerging from the dentist's office, little Judy announced, "He's not a 'painless dentist' like you said he was." "I'm sorry," her mother answered, "Did he hurt you much?" "Naw," the child shrugged, "but he sure yelled when I bit his thumb."

## Presenting . . .



## ANITA BRYANT IN SACRED CONCERT

Pine Bluff

Convention Center Arena

Saturday, Nov. 19th

8:00 p.m.

TICKETS: \$6.00-\$5.00-\$4.00

"Orders of 5 or More Tickets:"  
\$5.00-\$4.00-\$3.00

Order Yours Today From:

The Pine Bluff  
Convention Center Box Office  
P.O. Box 8748  
Pine Bluff, Ark.

\*Mail Order Only Till Oct. 31st

\*Available at:  
Box Office Window Nov. 1st

Presented By:

The M. B. Russell Agency, Inc.  
P.O. Box 1366, Pine Bluff, Ark.

## Attendance report

Oct. 16, 1977

Church	Sunday School	Church Training	Church adns.	Church	Sunday School	Church Training	Church adns.
Alexander, First	127	70	2	First	430	95	4
Alpena, First	77	18		Second	175	58	1
Ash Flat, First	72	38	1	Jonesboro			
Batesville, First	261	130		Friendly Hope	133	89	
Bentonville, Mason Valley	67	58		Nettleton	278	134	
Berryville				Kingston, First	38	34	
First	165	68		Lavaca, First	355	143	
Freeman Heights	150	62		Little Rock			
Rock Springs	53	40		Crystal Hill	128	54	2
Biscoe, First	88	44		Life Line	421	117	
Booneville				Wakefield, First	107	38	5
First	291		5	Melbourne, Belview	201	94	1
South Side	101	68	2	Monticello, Second	305	96	1
Bryant, First Southern	212	118		Mulberry, First	271	151	9
Cabot				Murfreesboro			
First	436	123		First	160	53	1
Mt. Carmel	295	135	7	Mt. Moriah	59		
Zion Hill	137	59		North Little Rock			
Caledonia	44	28	1	Calvary	383	119	
Camden, Cullendale First	558	164	5	Harmony	84		
Cash	112	58	1	Levy	444	119	
Charleston, First	190	59	3	Park Hill	657		5
Conway				Paragould			
Oak Bowery	113	64		Calvary	304	210	
Pickles Gap	190	110		East Side	319	166	3
Second	383	147	2	Paris, First	370	72	
Crossett				Pine Bluff			
First	497	158	1	Centennial	137		
Mt. Olive	314	137		First	608	109	5
Danville, First	200	54		Lee Memorial	248	71	
Dell	78	47		South Side	591	85	1
Des Arc, First	203	62		Sulphur Springs	156	76	2
El Dorado, West Side	456	449	5	Watson Chapel	414	128	
Elliott	373	166	4	Rogers			
Fl. Smith				First	572	160	1
First	1397	373	12	Immanuel	504	105	1
Grand Avenue	1001	199	1	Russellville			
Mission	20			First	481	90	6
Haven Heights	197	117	4	Second	146	46	
Trinity	149	26		Sheridan, First	188	49	
Fouke, First	118			Springdale			
Gentry, First	153	56		Caudle Avenue	158	93	
Gillham	90	44	1	Elmdale	321	133	2
Green Forest, First	198	43		First	1465		14
Greenwood, First	348	177	4	Texarkana, Shiloh Memorial	175	74	6
Hampton, First	150	91		Van Buren, First	578	189	2
Hardy, First	194	74	3	Mission	23		
Harrison, Woodland Heights	141	73		Vandervoort, First	74	43	
Hector, First	41	15		Wabash, Immanuel	93		
Hope, First	329	69		West Helena, Second	178	110	4
Hot Springs, Park Place	310	78		Writhrop, First	93	60	
Hughes, First	159	63	1	Woolster, First	116	88	
Jacksonville				Yellville, First	144	58	1

# Conference on Revival

November 2-6

First Baptist Church, Conway

- \*Dr. and Mrs. Stephen F. Olford
- \*Dr. and Mrs. C. L. Culpepper
- \*Miss Joe Ann Shelton, Miss Loeen Bushman
- \*Don Bingham with the revival choir and orchestra

Nightly at 7:00

Nurseries provided

Call 329-5648 for further details

Rev. W. L. Probasco, Pastor



## Help on IRS regulations

WASHINGTON (BP) — Laurence N. Woodworth, assistant secretary of the Treasury for tax policy, asserted in a speech to a Baptist conference here that government has been forced into defining religion.

Woodworth cited a case where an individual started his own church. "Whether that constitutes a religion or whether it doesn't, the government is forced into trying to draw a line somewhere there, otherwise anybody can step in and call anything they're

Internal Revenue Service, which distinguish between activities of churches which are "exclusively religious" and those which are not. They charge that this puts government in the position of defining "church" and "religious".

Woodworth suggested that the definition of "integrated auxiliary" could possibly be changed to some extent. He did not specify how it might be changed.

He asked for a detailed analysis and interpretation of the various points of view on "integrated auxiliaries" represented at the conference. "I for one would be glad to look at your proposals . . . myself and give you a considered response," he said.

Woodworth told conference participants that Form 990, an informational form required of all charitable and religious tax exempt organizations, is necessary for church-related institutions because it would be "difficult" to ask the non-religious organizations to file and exempt religious groups.

## Mrs. Rutledge dies

ATLANTA (BP) — Mrs. Vesta Rutledge, wife of Arthur B. Rutledge, emeritus executive director-treasurer of the Southern Baptist Home Mission Board, died Oct. 3 in Gainesville, Ga., from a massive stroke suffered two weeks earlier.

Services were scheduled Oct. 6 at Atlanta's Second Ponce de Leon Baptist Church.

Mrs. Rutledge is survived by her husband, two children, David Rutledge, an attorney in Newnan, Ga., and Elaine Ables of Sebring, Fla., and eight grandchildren.

Rutledge said flowers would be acceptable but that gifts to the Home Mission Board or the American Diabetes Association would also be appreciated. Mrs. Rutledge was diabetic for 18 years.

## Women's church vocations is topic

NASHVILLE, Tenn. (BP) — Plans are underway for a Consultation on Women in Church Related Vocations which will

be held in Nashville Sept. 20-22, 1978, according to Catherine Allen of the Woman's Missionary Union, chairperson of the consultation.

The consultation, a project approved by the Inter-Agency Council of the Southern Baptist Convention (SBC), is supported and planned by eight SBC agencies.

The agencies planning the meeting are the Sunday School Board, Foreign Mission Board, Home Mission Board, Woman's Missionary Union, Brotherhood Commission, Christian Life Commission, Baptist Joint Committee on Public Affairs and Southeastern Baptist Theological Seminary.

"This consultation is designed to enable denominational agencies to secure data, to examine issues and to serve more effectively by studying the involvement of women in church related vocations," said Allen.

She went on to say the consultation will not make specific recommendations to the participating agencies. Instead, the end product of the meeting will be a body of information, ideas and findings which the agencies may use if they choose to do so.

"We plan to look at the present involvement of women in church related vocations, study trends in this area and identify barriers to greater involvement," she explained. "We will look at the subject's biblical and theological, cultural and social, and psychological aspects."

The consultation, she continued, will also explore options for vocational participation by women in the denomination.

"This is not a consultation designed to study the ordination of women," stressed Allen. "There are many more issues concerning vocational involvement for women in our denominational life and these areas are the focus of the consultation."

Attendance is limited to those Southern Baptist Convention agencies and state conventions which are invited by the sponsoring agencies. Though participation must be limited to about 300 persons, some invitations will be sent to the general public.

Personnel from the participating agencies are working on committees to plan the program, local arrangements, finances, publicity and to process the findings.

**Address change ????????**  
Two weeks before change of address send name label below and new address to:  
ARKANSAS BAPTIST NEWSMAGAZINE  
P.O. Box 552  
Little Rock, Ark. 72203

engaged in a religious activity," he said.

Woodworth was the kick-off speaker at the three-day conference on "Taxation and the Free Exercise of Religion" sponsored by the Baptist Joint Committee on Public Affairs. James E. Wood Jr. is executive director.

Woodworth, a Baptist minister's son, pledged to work with church organizations in dealing with the difficulties raised by federal regulations which define "integrated auxiliaries" of churches. Numerous religious groups have protested the regulations of the