

Ouachita Baptist University

Scholarly Commons @ Ouachita

Arkansas Baptist Newsmagazine, 1980-1984

Arkansas Baptist Newsmagazine

2-9-1984

February 9, 1984

Arkansas Baptist State Convention

Follow this and additional works at: https://scholarlycommons.obu.edu/arbn_80-84



Part of the [Christian Denominations and Sects Commons](#), and the [Mass Communication Commons](#)

February 9, 1984

Arkansas Baptist

NEWSMAGAZINE



Encouraging women
in witnessing
pages 12 and 13



ABH photo / J. Ewert Shedd

Vance Havner (left), dean of American Bible teachers and evangelists, poses with Clarence Shell, ABSC director of evangelism; Laura Allen, Home Mission Board evangelism consultant; and Don Moore, ABSC executive director, during the state evangelism conference Jan. 30 - Feb. 1 at Immanuel Church, Little Rock. An interview with Laura Allen and photos from the event appear on pages 12 and 13.

European witness in song trip set for June

They shall be witnesses in... Copenhagen, Oslo, Bergen, Stockholm, Helsinki, Stavanger and many of the great cathedrals of Europe.

The witnesses are a group of singers who will travel June 22-July 7, at their own expense, to Scandinavia and Europe on a mission tour led by E. Amon Baker of Little Rock. The leader, who is minister of music at Little Rock's Immanuel Church, has been directing singers on mission tours since 1978.

Concerts are scheduled in churches in six Scandinavian cities. Then the group will begin an historical tour in Europe, seeing castles, museums and other sites. Their witness opportunities, Baker explains, will come as they tour cathedrals. In most of the

historic churches they will be granted permission to sing, possibly reaching thousands of other tourists with the Christian message. Baker says the group will perform mini-concerts of acappella early church music, appropriate for the setting.

Rehearsals for the music begin this week, and will be held every other week through June at Immanuel Church. Baker stresses that persons living at a distance from Little Rock can get music to learn. Two days of practice in Little Rock are scheduled immediately before the tour.

Singers interested in the mission tour can contact Baker at 1000 Bishop, Little Rock, 72202 (phone 501/376-3071 or 225-1054). He notes that spouses of singers are welcome.

Southern College posts spring enrollment increase

Spring semester enrollment figures at Southern Baptist College in Walnut Ridge are up over the spring 1983 enrollment, according to Jerol Swaim, vice-president for academic affairs.

Increases in transfer and readmitted students enabled Arkansas Baptists' two-year school to realize a four percent increase in full-time equivalent enrollment, Swaim said.

A total on-campus enrollment of 408—up six over 1983—yielded a full-time equivalency of 306—up 12—when considered with other programs.

"We are very pleased that, in a time of declining enrollments for many institutions of higher education, enrollment statistics still show an increase when compared to last year's figures," Swaim said.

Louisiana Baptist Message announces staff changes

ALEXANDRIA, La. (BP)—The Louisiana Baptist Message has announced the resignation of associate editor Oscar Hoffmeyer Jr., and the hiring of Marv Knox as associate editor.

Hoffmeyer, associate editor for 10 years, resigned to become director of public relations for the Louisiana Baptist Convention.

Knox, 27, worked as director of information services at Southern Baptist Theological Seminary where he recently completed a master of divinity degree. He worked previously as assistant news editor for the Southern Baptist Home Mission Board, Atlanta, and as a staff writer for the *Abilene Reporter-News*, Abilene, Texas.

In this issue

4 hunger at home?

An Arkansas college student disputes the report of the presidential task force on domestic hunger with her eyewitness report of hungry children in Little Rock.

15 promises revisited

As President Reagan began his bid for reelection, his annual State of the Union message outlined a campaign strategy reminiscent of his 1980 campaign—a series of social issues ranging from tuition tax credits to abortion.

Vatican ambassador vote delay buys time for response

Senate Foreign Relations Committee action on confirmation of William A. Wilson as U.S. ambassador to the Vatican has been postponed until Feb. 21. Senator Jesse Helms, D-S.C., asked for time for Americans to respond to action taken Jan. 10 by the Reagan administration to establish full diplomatic relations with the Vatican. It has been 116 years since the U.S. has had such a relationship.

James Dunn, Baptist Joint Committee on Public Affairs head, issued a statement encouraging all Baptists to register their opposition before the committee meets again.

"We have never had a more clear cut challenge to the principle of separation of church and state," Dunn said. "If Baptists really believe in separation they have just a few days to communicate. Only if hundreds of thousands of citizens phone and write their senators and congressmen will we have a chance to stop this flagrant violation."

Senator Helms, a Southern Baptist, originally supported repeal of the ban on funding an ambassador to the Vatican. He was a co-sponsor of S.1757. The prohibition was repealed by riders to State Department authorization bills in the House and the Senate, which a conference committee quickly approved Nov. 1. President Reagan signed the legislation in December.

Funding, by reprogramming funds for the State Department, is still being considered by Congressional committees.

Arkansas Baptists are urged to express their opposition to confirmation of Wilson by writing Senator Dale Bumpers (Room 6313, Dirksen Senate Office Building, Washington, D.C. 20510) and Senator David Pryor (Room 404, Russell Senate Office Building, Washington, D.C. 20410). Bumpers may be reached by phone by calling (202) 224-4843, and Pryor's phone number is (202) 224-2353.



Local church autonomy is the basis for all that Baptists do. This means there is no superstructure nor anyone in places of authority who can compel a local church to do anything. Since there is no hierarchy or super-church to direct the affairs of the local churches, associations or conventions, the demands for volunteer cooperation become paramount. Autonomy and voluntary cooperation are the secret of the phenomenal growth that Southern Baptists have enjoyed. But cooperation is a two-way street.

In order to have cooperation there must be at least two parties who have reached mutual agreement and who are faithful to that agreement.

Some have the idea that cooperation means doing everything "my" way and that "I" am the only party who has rights and privileges. In this instance, cooperation has ceased and it has become an autocratic procedure. Baptists believe in a cooperative democratic spirit and not in the dictator principle.

In order for cooperation to function properly, it may be necessary for each of the parties involved to forego having his way in every facet of a particular issue.

We are not suggesting compromise of principle. Certainly, there are doctrinal and moral issues which must not be compromised or diluted. But we do believe that cooperation requires compromise on certain structural or non-essential matters.

One of the disturbing things which occasionally occurs in Baptist denominational life is the tendency to demand one-way cooperation. This can be true of the denomination in insisting on its way regardless of the desires of churches and pastors. On the other hand, the denomination has some rights and privileges that should be regarded by churches and pastors.

It has always seemed a strange thing to this editor for a church to claim to be Southern Baptist and then to refuse to cooperate with any program that is proposed by the association, the state or the Southern Baptist Convention. It is even more strange for a church to refuse to cooperate with the convention and then to criticize and fight all the leaders.

It is almost inevitable, when a "fighting" church gets into trouble and wants help or a loan or some other missionary assistance, that it will call on the convention to assist in sor-

ting our the problems. Tragically, when such a church gets what it wants from the convention, it often turns around and starts fighting those who went out of their way to help.

Are not there some moral principles that should govern Christians? We do not expect everyone to agree with us and everyone to cooperate with us, but we do expect Christians to do right. Someone is reported as saying that he had rather be right than president. No individual or church should ever be satisfied with doing less than what is right.

The question arises, "With our autonomy and with such a variety of personalities, how is cooperation possible?" Our basis for cooperation must grow out of several factors: (1) Our commitment to the Word of God as our only source of authority; (2) Our mutual respect for each other; and (3) Our recognition of our need for others. Our need for cooperation becomes obvious when we recognize the limitations of an individual church working alone. The pooling of our resources makes it possible for us to have a worldwide mission endeavor.

The fact that each church is autonomous and can determine its own policies makes it imperative that our actions be considered in the light of Jesus' teachings. Jesus commanded us, "Go ye therefore and teach all nations, baptizing them in the name of the Father, and of the Son, and of the Holy Spirit." The only way that we can effectively, "go," "teach" (discipline), and "baptize," is through the pooling of our resources. The world-wide challenge of Christ and the world-wide responsibility that he expects demands two-way cooperation.

As long as Baptists continue on the principle of voluntary cooperation, we must remember that cooperation is a two-way street in which both parties are faithful to the agreement reached and to the program worked out through a democratic process.

For your meditation

II Corinthians 8:8-10 "I speak not by commandment, but by occasion of the forwardness of others, and to prove the sincerity of your love. For ye know the grace of our Lord Jesus Christ, that, though he was rich, yet for your sakes he became poor that ye through his poverty might be rich. And herein I give my advice: for this is expedient for you, who have begun before, not only to do, but also to be forward a year ago" (KJV).

Arkansas Baptist
NEWSMAGAZINE

Arkansas' third largest publication,
meeting the information needs of Arkansas Baptists

VOLUME 83 NUMBER 6
J. Everett Sneed, Ph.D. Editor
Betty Kennedy Managing Editor
Erwin L. McDonald, Litt D. Editor Emeritus

Arkansas Baptist Newsmagazine Board of Directors: Tommy Robertson, El Dorado, president; Mrs. J. W. L. Adams Jr., Texarkana; Charles Chesser, Carlisle; Lornie Gibbons, North Little Rock; Leroy French, Fort Smith; Mrs. Jimmie Garner, Truman; Merle Milligan, Harrison; Hon. Etelajane Roy, Little Rock; and Lane Strother, Mountain Home.

Letters to the editor expressing opinions are invited. Letters should be typed double-spaced and must be signed. Letters must not contain more than 350 words and must not defame the character of persons. They must be marked "for publication."

Photos submitted for publication will be returned only when accompanied by a stamped, self-addressed envelope. Only black and white photos can be used.

Copies by mail 50 cents each.

Deaths of members of Arkansas churches will be reported in brief form when information is received not later than 14 days after the date of death.

Advertising rates on request.

Opinions expressed in signed articles are those of the writer.

Member of the Southern Baptist Press Association.

The Arkansas Baptist Newsmagazine (USPS 031-280) is published weekly, except the third week in April, at July 4 and Dec. 25, by the Arkansas Baptist Newsmagazine, Inc., Little Rock, AR. Subscription rates are \$8.36 per year (individual), \$5.40 per year (Every Resident Family Plan), \$6.00 per year (Group Plan) and \$18.00 per year (to foreign address). Second class postage paid at Little Rock, AR. POSTMASTER: Send address changes to Arkansas Baptist Newsmagazine, P. O. Box 552, Little Rock, AR 72203.

Opinion

'I wasn't prepared for the hunger'

by Edwina Davis

I read in the *Arkansas Gazette* last week that a White House task force had said it was unable to substantiate allegations of rampant hunger in this country.

Of course, it did go on to report that, no doubt, hunger does still exist here. But it certainly is not "rampant" hunger, and certainly "For the vast majority of low-income people, . . . food assistance efforts are available and sufficient. . ."

Now that's great news isn't it! Isn't it wonderful to know that in this country hunger doesn't have to be a big issue anymore?

It is all so wonderful—that I thought I would be ill before I read past the first paragraph.

You see, my thoughts immediately went back to some hungry people I worked and lived with this summer. I didn't work in Calcutta, India, or in the ghettos of some major city in the United States or the Appalachians or anywhere else someone might imagine real hunger would be found. I was in Little Rock, Ark.

The Baptist Student Union sponsored me as a summer missionary to live and work there for 10 weeks at an emergency shelter for abused and neglected children. When I entered that situation I expected to find the physical and emotional scars that go along with those kids. But I was not prepared for the hunger.

When four-year-old Glen came to the shelter, it shook me. At the time, he was the thinnest child I had ever seen in my life. He honestly reminded me of pictures I had seen of starving children overseas. For days after he came, I wanted to cry every time I looked at him.

Amanda was the worst, though. At 14 months, she was lucky to pass for six months. Something about her wearing newborn Pampers was more than I could handle. Remember that food assistance the task force said is so sufficient? Well, it was so sufficient that she had been living on sugar water.

Then there was Lamont. He was so unsure when his next meal would come that the first day he was at the shelter he tried to eat so much he literally made himself sick. And when a group of five siblings were removed from their home to be placed with us, half a watermelon was the only food found in the house.

A month ago, according to the *Arkansas Gazette*, Edwin Meese III, presidential counselor, said such "anecdotal stuff" about hunger was available, but there were no "authoritative figures." So maybe those kids' hunger wouldn't have mattered a whole lot to Meese or the task force. But it sure had a big impact on me, and I know it had an even greater impact on those kids.

I think the demand for authoritative figures was totally unrealistic on Meese's part anyway. Even the task force reported that it was impossible to document the definition and extent of hunger in this country.

That raises a question in my mind about the task force's choice of words in its report. Why did it report that it could not prove rampant hunger existed in this country rather than reporting it was unable to disprove hunger is rampant in this country? Both are true aren't they?

I don't know what far-reaching effects the task force's choice of words will have on the hunger in this nation. But I do know that choice has already led to the task force's recommendation that Congress make participation in federal food assistance programs optional for states.

I just hope that this and future administrations will not further cut assistance to the poor based on that choice of words, and I hope that choice doesn't cost lives.

If only those 13 task force members could have put a newborn Pampers on Amanda, or given Glen a hug and found the bones uncomfortable, before that choice was made.

Maybe then the report would have been worded a little differently.

Reprinted from *The Herald of Arkansas State University*. Used by permission.



The Southern accent

Daniel H. Harrison

Hearing and doing

Some time ago I was interviewed by James Alexander, one of our students and a member of our annual staff. He closed the interview by asking me what I thought was the one important thing in my field.

The question James asked is a fundamental question which merits a thoughtful answer. Several possibilities come readily to mind: responsible scholarship, knowledge of the subject, aptness to teach, thorough preparation, adequate bibliography, enthusiastic presentation, persuasive logic. These are all good and desirable and commendable. But none of them qualifies as the one important thing, for each each is but a means to an end and not an end in itself. If we are to take seriously what Jesus has said about hearing and doing, the honor must go to knowing and doing the will of God.

This, then, I conceive to be the one important thing in my field: helping students to know God and his will and to commit themselves to it, and thus to find themselves and their respective places and tasks in the world. All else should be conducive to this one thing.

In this responsibility of helping students to know and do the will of God there are no departmental boundaries, for the religion department — which happens to be my department — has no corner on Christian concern and commitment, or awareness, or wisdom, or desire and ability to help. Knowing and doing the will of God may be, and often is, a matter of some complexity. Every department, every person, is needed and has a contribution to make in clarifying vision, solidifying conviction, resolving dif-

iculties, broadening perspectives, deepening understanding, or sharpening tools.

We at Southern expect to launch a four-year degree program in Christian Ministries this fall. For this we have planned and worked long and hard. We are excited and hopeful about it. But as the hour approaches, soul-searching intensifies. On the surface we are occupied with questions of curriculum, course syllabi, class schedules, library holdings, budgets and personnel. But underneath, and more fundamentally, our concern is with the one important thing: the will of God — how to find and execute it ourselves; how to help our students find and execute it.

Daniel H. Harrison is chairman of the division of religion at Southern Baptist College in Walnut Ridge.

You'll be glad to know...

by Don Moore

..About one who died on the Korean jetline. She was 28-year-old Rebecca Scruton, daughter of Robert and Mary Beal, a Southern Baptist couple from Del Rio, Texas. She was on her way to Korea to visit Mr. and Mrs. Beal, who were working for our government there. In December 1982, she had lost her husband to cancer. She left her six- and two-year-old children with her in-laws in Massachusetts and made her way to New York for the flight.



Moore

Some significant things happened in those last days of her young life. She had at first forgotten her passport, but assured a friend that she would never be without her passport to heaven. She had some fears which were alleviated by a scripture (Lam. 3:52-57), which she also wrote down for a friend.

Rebecca told another friend that she planned to share her faith with whomever she might sit next to on the plane.

Going through a box of personal things, her mother found a letter Rebecca had never mailed, in which she wrote of God's purpose being carried out in her husband's life and death and that "everything is the way the Lord wants it."

Honestly, if your life were taken from you today, what would you leave behind that would indicate that you had a relationship with an all-sufficient, full-of-grace God?

When a Christian lives right he is ready to go at any time. These events or actions are made significant in the light of the fact that they took place so near to the end of her young life. But the truth is, they were not done to be dramatic. They were a part of her everyday Christian life.

Don Moore is Executive Director of the Arkansas Baptist State Convention.

Brazil sends missionaries

Brazilian Baptists have appointed their first missionaries to Macao, the Portuguese colony on the coast of China. They also named three new missionaries and seven short-term missionaries. Despite extreme inflation and devaluation, Baptists also surpassed their 1983 foreign mission offering goal. Macao is Brazil's 17th overseas mission field.



Food and fellowship

Virginia Kirk and Jane Purtle

Treating yourself

"For all the law is fulfilled in one word, even in this; Thou shalt love thy neighbor as thyself" (Gal. 5:14).

"Love thy neighbor as thyself" is a recurring statement in the Bible but we tend to stress only the first three words and often ignore the last two. The fact is that we can't love our neighbor as we should until we care for ourselves.

One of the ways we can pay attention to ourselves is in the food we eat. Putting aside the fact that everyone seems to be on a diet or talking about it, there are ways that we please ourselves when we choose something to eat between meals.

In preparation for this column, a number of people were asked about their favorite snack food. Again and again, chocolate in some form or the other was mentioned. A cup of hot chocolate was often selected, or a piece of chocolate candy, and one woman said her favorite was a handful of chocolate baking chips.

Therefore, our recipes for this month are easy to make, home-made, chocolate treats. They keep almost indefinitely for that special time when you want to treat yourself, or they are good served to company. Calories were not considered.

Hot mocha cappuccino (beverage)

- | | |
|--|--|
| ½ cup instant coffee
(decaffeinated if desired) | 1 cup powdered milk
(or coffee creamer) |
| 2 tablespoons cocoa | ¾ cup sugar |
| ¼ teaspoon cinnamon | |

Blend ingredients in a blender to a fine powder. Use two rounded teaspoons of mixture in each cup (if using a mug, use more). Add boiling water. Top with a large dollop of whipped topping mix. Store dry mixture in a tightly covered container.

Frozen chocolate cups

- | | |
|----------------------------------|---|
| 1 cup margarine | 4 eggs |
| 2 cups powdered sugar,
sifted | 4 squares unsweetened
chocolate, melted (or
substitute ¾ cup cocoa
and ¼ cup margarine
melted together) |
| ½ teaspoon peppermint
extract | |
| 2 teaspoons vanilla | |

Vanilla wafers

Mix everything, except the vanilla wafers, together thoroughly. Put a vanilla wafer in the bottom of paper baking cups. Spoon a layer of the chocolate mixture on top and freeze. Whipped topping can be added if desired. When frozen, store in plastic bags. These little cups make a satisfying between meal bite to eat or a small dessert to serve after a heavy meal.

Virginia Kirk, professor emeritus at Arkansas College, is a member of Batesville First Church. Jane Purtle is on the staff of Christian Counseling and Teaching Center in Syria, Va. They have enjoyed cooking together for several years.

Baptist pastor chosen Americans United head

Robert Maddox Jr., a Southern Baptist minister and former assistant to President Jimmy Carter, has been named executive director of Americans United for Separation of Church and State.

Maddox, a speechwriter and special assistant for religious liaison to President Carter from 1979 to 1981, is currently pastor of Mayfield Road Church, Arlington, Texas.

During his White House tenure, Maddox coordinated outreach to the U.S. religious community. He also coordinated briefings for religious leaders and press on national and international issues. In 1979 he assum-

ed much of the White House contact with voluntary relief agencies to help Cambodian refugees.

He is a graduate of Baylor University, Southwestern Baptist Theological Seminary and Candler School of Theology at Emory University.

Americans United is an interfaith group concerned about preserving church-state separation. It has opposed the appointment of an ambassador to the Vatican, tuition tax credits for parochial schools and government-mandated prayer in public schools.

by Millie Gill / ABN staff writer

Timothy L. Tucker

has joined the staff of Baring Cross Church in North Little Rock as minister of youth and evangelism. He is a recent graduate of Southwestern Baptist Theological Seminary. His wife is the former Celeste Cox of Jonesboro.

James E. Hill

has been named director of missions for Calvary Association with offices in Searcy. He came to this position from 25 years of service as pastor of Central Church in Hot Springs. He has also served as pastor of churches in Kentucky. Hill is a graduate of Howard College in Birmingham, Ala., and of Southern Baptist Theological Seminary. He has served as president of the Arkansas Baptist State Convention Executive Board and has held other leadership roles in the state convention. He and his wife, Norma Jean, are parents of two children, Debra and Jonathan.

Mark D. Holmes

recently graduated from Southwestern Baptist Theological Seminary with a master of divinity degree. He is the son of Mr. and Mrs. Ralph Holmes and the son-in-law of Mr. and Mrs. Richard Bateman, all of Fort Smith.

Mrs. Boyd Margason

of Mountain Home First Church and president of Arkansas' Woman's Missionary Union joined 300 persons in Birmingham, Ala., Jan. 8 for the dedication of the new national WMU headquarters. She presented WMU executive director Carolyn Weatherford with a box of historical materials to be placed in the cornerstone of the new building.

Keith Sandefur

resigned Jan. 8 as pastor of the Togo Church at Parkin to become pastor of a Waldron church.

E. L. Wheeler

is serving as pastor of the Prairie Grove Church at Hamburg.

Johnny Phillips

has resigned as pastor of the Selma Church at Monticello.

Mr. and Mrs. Corbet Martin

of Rosie will celebrate their 50th wedding anniversary Feb. 12 with open house in the fellowship hall of the Rosie Church. They have been active members of this church since their marriage Feb. 10, 1934. Mrs. Martin, the former Elsie Tucker, is a retired employee of a Batesville firm and Mr. Martin is a retired farmer. They have two daughters, 12 grandchildren and 10 great-grandchildren.



Tucker



Hill

Ron Clark

began serving Jan. 22 as pastor of the Cass Mission near Ozark. He has previously pastored churches in Texas, Oklahoma and Arkansas. He received his seminary extension pastoral ministry diploma in 1982. Clark and his wife, Karen, have two children, David and Susan.

H. Lee Lewis

of Little Rock, a retired Southern Baptist minister, died Feb. 1 at age 77. He was a member of the Wakefield First Church in Little Rock and had been pastor of Southern Baptist churches in Arkansas for 50 years prior to his retirement. He had also organized four churches in the state, was a former second vice president of the Arkansas Baptist State Convention and had been honored by the Arkansas House of Representatives for his years of service in the ministry. Survivors include his wife, Alma Roach Lewis; seven sons, three daughters, three stepsons, one brother, 30 grandchildren and 26 great-grandchildren. Memorials may be made to the Pulaski County Association Mission Fund.

Philip L. Jackman

of West Fork died Feb. 1 of burns suffered in a grass fire. Jackman, age 46, was burning trash when the fire got out of control and he apparently caught his clothing on fire when trying to bring the fire under control. He was pastor of the Black Oak Church near Fayetteville. Survivors include his wife, Delores Edwards Jackman of West Fork; two stepsons and a stepdaughter of Wichita, Kans.; a foster daughter of Kingdom City, Mo.; his parents, Mr. and Mrs. Leland Jackman of Wichita, Kans., two brothers of Wichita and four grandchildren. Memorials may be made to the Washington-Madison Association or the Student Ministerial Fund, 1211 James Street, Fayetteville.

Sherry Nordin

has been named as pianist and associate youth director of the Indian Springs Church at Bryant. Miss Nordin is a graduate of Arkansas Tech University at Russellville and is accounting services supervisor for the Arkansas Baptist State Convention.

Terry Fox

has been named as the pastor's assistant at Fort Smith First Church. He was serving as an intern there.

buildings

Cabin Creek Church

of Lamar held groundbreaking services Dec. 18 for a new building which will house both an auditorium with a seating capacity of 325 and 15 classrooms. Building costs are estimated to be approximately \$250,000. Participants in the ground breaking were pastor Jerry Holcomb, Burl Price, chairman of the deacons, and Phillip Sharp, Ronnie Funderburg, Phil Rosel, Claudine Dillard, Sherman Wadley, Loretta Crofts, Russell Walker, Charles Brown and Don Davis, all building committee members. Ron Payne is building committee chairman.

Widener Church

is clearing debris from their church plant which was totally destroyed by an early morning fire Dec. 23. Plans are being made to begin a building program in the near future, according to pastor Floyd Cowan Jr. Sunday worship services are now being held at the Widener Methodist Church.



Clinton First Church held a noteworthy service Jan. 15, marking the completion of a three-year "Together We Build" program. This program included both the building of a new sanctuary and fellowship hall and the renovation of the old building for classrooms, offices and a choir room. Participating in the noteburning were (left to right) James Tyson, building committee chairman, and Garner Johnson, chairman of deacons.

Contributions from churches and missions to Arkansas Baptist Family and Child Care Services, 1983

(Thanksgiving Offering, Mother's Day Offering, Church Budget, Birthday, Sponsorship, etc.) If an error is found in this report, please notify Johnny G. Biggs, P.O. Box 552, Little Rock, AR 72203. Thank you, Arkansas Baptists.

ARKANSAS VALLEY BAPTIST ASSN

Barton Baptist Church	106.21
Brickeys Baptist Church	198.40
Brinkley First Baptist Church	98.78
Broadmoor Baptist Church	481.70
Clarendon First Baptist Church	499.00
Elsaine Baptist Church	258.17
Friendship Baptist Church	295.00
Helena First Baptist Church	1,180.00
Lambrook First Baptist Church	307.73
Lera Baptist Church	481.70
Marianna First Baptist Church	729.21
Marvell First Baptist Church	459.51
Monroe Baptist Church	125.00
More Baptist Church	802.00
North Side Baptist Church	19.00
Snow Lake Baptist Church	140.00
Turner Baptist Church	228.73
West Helena Baptist Church	1,204.81
West Helena Second Baptist Church	728.00
ASHLEY COUNTY BAPTIST ASSN	8,860.60

Calvary Baptist Church	16.00
Corinth Baptist Church	200.00
Crossett First Baptist Church	1,129.87
Crossett Second Baptist Church	85.00
Eden Baptist Church	304.00
Fellowship Baptist Church	56.00
Fountain Hill First Baptist Church	498.57
Gardner Baptist Church	198.79
Hamburg First Baptist Church	233.31
Jarvis Chapel Baptist Church	2,051.41
Martinsville Baptist Church	40.78
Meridian Baptist Church	218.00
Mt. Olive Baptist Church	332.03
Mt. Pleasant Baptist Church	200.00
Pleasant Lane Baptist Church	382.82
Temple Baptist Church	182.50
BARTHOLOMEW BAPTIST ASSN	6,033.36

Antioch Baptist Church	70.35
Corinth Baptist Church	55.00
Eagle Lake Baptist Church	141.38
Ebenezer Baptist Church	73.70
Enon Baptist Church	159.13
Florence Baptist Church	50.00
Heritage Baptist Church	500.00
Immanuel Baptist Church	560.00
Macedonia Baptist Church	267.00
Monticello First Baptist Church	1,188.00
Monticello Second Baptist Church	23.50
Old Union Baptist Church	287.00
Saline Baptist Church	280.00
Southside Baptist Church	410.00
Wesson First Baptist Church	310.00
West Side Baptist Church	230.13
Wilmar Baptist Church	158.33
BENTON BAPTIST ASSN.	4,241.71

Bella Vista Baptist Church	1,429.50
Bentonville First Baptist Church	455.32
Centerpoint Baptist Church	298.40
Central Ave Baptist Church	43.92
Decatur First Baptist Church	460.16
Faith Baptist Church	33.00
Garfield First Baptist Church	353.00
Gentry First Baptist Church	1,245.12
Gravette First Baptist Church	1,817.10
Gun Springs Baptist Church	160.47
Highfill First Baptist Church	288.51
Immanuel Baptist Church	161.80
Lakeside Baptist Church	145.70
Lakewood Baptist Church	86.85
Lowell Baptist Church	138.94
Mason Valley Baptist Church	227.23
Monte Ne Baptist Church	115.00
Park Street Baptist Church	35.00
Pea Ridge First Baptist Church	331.48
Pleasant Hill Baptist Church	6.84
Rogers First Baptist Church	8.00
Siloam Springs First Baptist Church	2,312.22
Sulphur Springs First Baptist Church	169.34
Trinity Baptist Church	242.25
Twelve Colored Baptist Church	73.00
BIG CREEK BAPTIST ASSN	10,802.73

County Line Baptist Church	39.00
Elizabeth Baptist Church	45.85

Enterprise Baptist Church	40.00
Fira Baptist Church	40.75
Mt. Zion Baptist Church	84.15
Spring River Baptist Church	101.49
Viola Baptist Church	512.22
BLACK RIVER BAPTIST ASSN	861.63

Alicia Baptist Church	76.00
Anson Baptist Church	40.75
Black Rock First Baptist Church	50.00
Calvary Baptist Church	52.04
Crossroads Baptist Church	292.47
Diaz Baptist Church	202.00
Grubbs First Baptist Church	205.00
Horseshoe Baptist Church	25.00
Horie First Baptist Church	1,326.97
Imboden First Baptist Church	416.80
Immanuel Baptist Church	220.50
Jacksonport Baptist Church	315.25
New Hope #1 Baptist Church	35.59
New Hope #2 Baptist Church	257.94
Newport First Baptist Church	584.00
Old Walnut Ridge Baptist Church	300.51
Pitts Baptist Church	33.83
Ravenden First Baptist Church	74.00
Sedgwick Baptist Church	114.40
Smithville Baptist Church	236.31
Southside Baptist Church	350.00
Spring Lake Baptist Church	277.39
Swifton Baptist Church	146.21
Tuckerman First Baptist Church	382.58
Walnut Ridge First Baptist Church	2,866.23
White Oak Baptist Church	175.00
BUCKNER BAPTIST ASSN	8,628.26

Abbott Baptist Church	75.00
Bates Baptist Church	250.00
Calvary Baptist Church	37.59
Central Baptist Church	350.00
Cedar Creek Baptist Church	177.00
Clarks Chapel Baptist Church	120.00
Dalton Baptist Church	183.00
Fellowship Baptist Church	1,402.06
Hartford First Baptist Church	1,007.48
Haw Creek Baptist Church	108.00
Hope Baptist Church	217.33



Huntington First Baptist Church	330.00
Joni Baptist Church	575.42
James Fork Baptist Church	18.00
Long Ridge Baptist Church	350.00
Mansfield First Baptist Church	874.72
Midland First Baptist Church	122.25
New Providence Baptist Church	185.00

Parks Baptist Church	255.16
Pleasant Grove Baptist Church	275.00
Rock Creek Baptist Church	200.00
Southside Baptist Church	17.17
Tanahill Baptist Church	152.00
Union Hope Baptist Church	75.00
Unity Baptist Church	436.80
Waldron First Baptist Church	1,188.00
West Hartford Baptist Church	1,309.16
Winfield Baptist Church	800.02
BUCKVILLE BAPTIST ASSN	9,368.03

Mt. Tabor Baptist Church	75.00
Rock Springs Baptist Church	48.00
CADDO RIVER BAPTIST ASSN	121.00

Awity First Baptist Church	103.95
Big Fork Baptist Mission	34.00
Black Springs Baptist Church	30.00
Caddo Gap Baptist Church	80.00
Glennwood First Baptist Church	813.55
Lake Ouachita Baptist Church	151.00
Little Hope Baptist Church	89.00
Mt. Ida First Baptist Church	205.00
Norman First Baptist Church	212.71
Oden First Baptist Church	132.00
Pencil Bluff First Baptist Church	476.23
Pine Ridge Baptist Church	40.00
Revenge Baptist Church	244.58
CALVARY BAPTIST ASSN	2,675.80

Antioch Baptist Church	355.00
Augusta First Baptist Church	574.35
Beebe First Baptist Church	870.83
Bethany Baptist Church	300.00
Central Baptist Church	1,086.85
Crosby Baptist Church	150.00
Denmark Baptist Church	20.00
Good Hope Baptist Church	117.97
Grace Baptist Church	328.13
Gregory Baptist Church	250.00
Griffithville First Baptist Church	241.43
Harrison First Baptist Church	223.00
Judsonia First Baptist Church	445.01
Kennett First Baptist Church	1,137.29
Liberty Baptist Church	100.00
McCrary First Baptist Church	100.00
McRae First Baptist Church	138.00
Midea Baptist Church	29.40
Newton Baptist Church	157.55
Mt. Hebron Baptist Church	105.55
Pangburn First Baptist Church	345.82
Patterson First Baptist Church	400.00
Pleasant Grove Baptist Church	375.81
Pleasant Valley Baptist Church	178.00
Rocky Point Baptist Church	385.35
Road Bud Baptist Church	279.81
Searcy First Baptist Church	1,370.08
Searcy Second Baptist Church	211.92
Temple Baptist Church	208.71
Trinity Baptist Church	295.00
Tupelo First Baptist Church	181.08
Union Valley Baptist Church	62.00
Valley Baptist Church	295.88
West Point Baptist Church	85.00
CAREY BAPTIST ASSN	11,857.86

Bearden First Baptist Church	166.80
Bethesda Baptist Church	150.00
Calvary Baptist Church	150.00
Eagle Mills Baptist Church	50.00
Faith Baptist Church	185.00
Fordyce First Baptist Church	700.00
Hampton First Baptist Church	300.00
Harmony Baptist Church	100.00
Hennings Baptist Church	127.34
Ouachita Baptist Church	162.00
Parapetry Baptist Church	145.00
Shady Grove Baptist Church	384.25
South Side Baptist Church	113.85
Spargan First Baptist Church	3,703.00
Thornhill First Baptist Church	211.42
Tinsman First Baptist Church	50.00
CAROLINE BAPTIST ASSN	6,790.86

Austin Station Baptist Church	147.45
Baugh Chapel Baptist Church	158.00

Families and Child Care contributions

Biesse First Baptist Church	205.55	Vine Prairie Baptist Church	37.74	Dover Baptist Church	535.80	
Brownsville Baptist Church	40.00	Webb City Baptist Church	387.97	East Point Baptist Church	182.56	
Cabot First Baptist Church	2,504.00	Woodland Baptist Church	285.00	Fair Park Baptist Church	158.15	
Cabot Second Baptist Church	52.20		\$ 8,182.35	Grace Manor Baptist Church	11.50	
Calvary Baptist Church	24.86	CONCORD BAPTIST ASSN			Havana Baptist Church	1,000.00
Caney Creek Baptist Church	84.87	Bethel Baptist Church	131.70	Hector First Baptist Church	50.11	
Carlsale First Baptist Church	411.42	Bethel Baptist Church	179.50	Hopewell Baptist Church	100.00	
Chambers Baptist Church	100.00	Bluff Ave Baptist Church	175.80	Inmanuel, Russellville	141.25	
Cochlear Baptist Church	264.17	Bonville First Baptist Church	870.45	Kelley Heights Baptist Church	160.00	
Cox Baptist Church	35.00	Branch Baptist Church	216.80	Knoxville First Baptist Church	13.97	
Cross Roads Baptist Church	400.00	Bonville First Baptist Church	870.45	London First Baptist Church	80.00	
De Arc First Baptist Church	1,085.00	Delaware Baptist Church	100.00	Morland Baptist Church	29.00	
DeValls Bluff First Baptist Church	211.80	Delaware Baptist Church	373.00	New Hope Baptist Church	196.00	
Endland First Baptist Church	150.77	East Side Baptist Church	85.00	Ola First Baptist Church	175.05	
Hazen First Baptist Church	626.05	Enterprise Baptist Church	807.17	Pittsburg Baptist Church	200.00	
Hunnock First Baptist Church	27.50	Excelsior Baptist Church	184.47	Plainville First Baptist Church	100.00	
Inmanuel Baptist Church	101.77	Faith Baptist Church	126.00	Pleasant View Baptist Church	81.57	
Koe Baptist Church	263.04	Fort Smith First Baptist Church	931.87	Pottsville Baptist Church	278.52	
Lanoka Baptist Church	310.14	Glendale Baptist Church	57.82	Rover Baptist Church	15.00	
Mt. Carmel Baptist Church	10.00	Grand Avenue Baptist Church	4,220.52	Russellville Secon Baptist Church	384.00	
Mountain Springs Baptist Church	253.03	Grayson Baptist Church	60.00		\$ 4,779.50	
New Hope Baptist Church	149.73	Greenwood Baptist Church	220.00	DELTA BAPTIST ASSN		
Oak Grove Baptist Church	194.00	Hackett First Baptist Church	34.95	Arkansas City Baptist Church	336.64	
Old Austin Baptist Church	275.58	Haven Heights Baptist Church	2,029.00	Bellaire Baptist Church	742.00	
Pleasant Hill Baptist Church	217.00	Inmanuel Baptist Church	143.30	Chickasaw Baptist Church	87.20	
Steel Bridge Baptist Church	481.38	Jenny Lind Baptist Church	325.27	Collins Baptist Church	33.50	
Toltec Baptist Church	70.00	Livaco First Baptist Church	185.00	Daniel Chapel Baptist Church	25.00	
Ward First Baptist Church	252.81	Magnolia First Baptist Church	385.00	Dermott Baptist Church	725.00	
Wattensaw Baptist Church	\$ 10,859.14	Mt. Zion Baptist Church	195.00	Eudora Baptist Church	250.00	
CENTENNIAL BAPTIST ASSN						
Aberdeen First Baptist Church	\$ 136.00	Mt. Zion Baptist Church	378.83	Gaines Baptist Church	58.75	
Alagra First Baptist Church	889.44	North Side, Charleston	439.87	Halley Baptist Church	67.00	
Delmit First Baptist Church	184.00	North Side, Fort Smith	436.53	Jennita Baptist Church	100.00	
East Side Baptist Church	184.00	Oak Cliff Baptist Church	281.87	Jerome Baptist Church	118.64	
Faith Baptist Church	121.32	Palatine Baptist Church	225.50	Kelso Baptist Church	360.00	
Gillett First Baptist Church	190.00	Phoenix Village Baptist Church	120.00	Lake Village Baptist Church	313.88	
North Maple Baptist Church	65.00	Pine Log Baptist Church	120.00	McGhee First Baptist Church	747.00	
Reydl Baptist Church	442.00	Ratcliff First Baptist Church	120.92	Montrose Baptist Church	32.80	
South Side Baptist Church	56.26	Roseville Baptist Church	125.71	New Hope Baptist Church	190.00	
St. Charles Baptist Church	152.00	Rye Hill Baptist Church	281.87	North Side Baptist Church	100.00	
Stutcher First Baptist Church	1,468.50	South Side, Booneville	127.42	Parkway Baptist Church	40.00	
Titchner Baptist Church	\$ 4,565.73	South Side, Fort Smith	426.00	Portland Baptist Church	265.00	
CENTRAL BAPTIST ASSN						
Barcelona Road Baptist Church	\$ 314.00	Spraling First Baptist Church	216.74	Richland Baptist Church	129.43	
Benton First Baptist Church	1,650.00	Temple Baptist Church	133.00	Shiloh Baptist Church	100.00	
Calvary Baptist Church	250.00	Trinity Baptist Church	107.13	South McGhee Baptist Church	116.00	
Central Baptist Church	785.00	Union Hall Baptist Church	50.00	Tillar First Baptist Church	350.00	
Gravel Hill Baptist Church	75.00	Westside Baptist Church	404.03	Watson Baptist Church	83.56	
Highland Heights Baptist Church	650.26	Windor Park Baptist Church	120.00	Wilnot Baptist Church	262.00	
Lat Springs First Baptist Church	918.18		\$ 18,319.72	FAULKNER COUNTY BAPTIST ASSN		
Lot Springs Second Baptist Church	1,291.72	CONWAY-PERRY BAPTIST ASSN				
Hurricane Lake Baptist Church	173.21	Bisgale Baptist Church	\$ 80.00	Beryl Baptist Church	\$ 142.00	
Lakeshire Baptist Church	165.00	Casa First Baptist Church	184.00	Brook Baptist Church	48.00	
Lakeshore Heights Baptist Church	165.00	Houston Baptist Church	89.00	Brunley Baptist Church	118.00	
Le Chapel Baptist Church	588.70	Harrison First Baptist Church	500.00	Cadron Ridge Baptist Church	27.01	
Lonsdale Baptist Church	188.08	Hammond Baptist Church	187.00	Conway First Baptist Church	1,531.00	
Magnet Cove Baptist Church	206.78	Opello Baptist Church	65.00	Conway Second Baptist Church	573.22	
Malvern Third Baptist Church	188.25	Perry Baptist Church	250.00	Emanuel Baptist Church	28.00	
Meadowview Baptist Church	190.34	Renoville First Baptist Church	281.87	Friendship Baptist Church	103.96	
North Main Baptist Church	97.33	Plains Grove Baptist Church	70.00	Harian Park Baptist Church	135.00	
Old Union Baptist Church	104.91	Plumville First Baptist Church	147.57	Harrison Baptist Church	1,488.64	
Odenaville Baptist Church	377.00	Salpasholia Baptist Church	25.00	Holly Baptist Church	483.37	
Parry Baptist Church	94.30	Stony Point Baptist Church	102.00	Mayflower First Baptist Church	406.68	
Piney Baptist Church	188.19	Thornburg Baptist Church	100.00	Mt. Vernon Baptist Church	74.74	
Pleasant Hill Baptist Church	110.00	Union Valley Baptist Church	\$ 2,513.00	Mt. Zion Baptist Church	2,681.72	
Edgecrest Baptist Church	180.26	CURRENT-GAINS BAPTIST ASSN				
Royal Baptist Church	92.35	Biggers Baptist Church	\$ 84.68	New Baptist Church	37.49	
Salem Baptist Church	603.56	Calvary Baptist Church	147.74	New Hope Baptist Church	180.00	
Shorewood Hill Baptist Church	81.25	Cornine Baptist Church	2,232.00	Dak Bowery Baptist Church	986.45	
Trinity, Benton	263.00	Emanuel Baptist Church	87.87	Pick Line Baptist Church	665.83	
Trinity, Malvern	1,482.00	Greenway First Baptist Church	272.20	Pleasant Grove Baptist Church	617.00	
Walnut Valley Baptist Church	\$ 12,541.45	Haven Baptist Church	84.38	Saltville Heights Baptist Church	339.38	
CLEAR CREEK BAPTIST ASSN						
Alma First Baptist Church	\$ 84.28	Holly Island Baptist Church	26.27	South Side Baptist Church	\$ 8,691.53	
Altus First Baptist Church	25.00	Hopewell Baptist Church	103.45	GARLAND COUNTY BAPTIST ASSN		
Baton Baptist Church	34.00	Mt. Pleasant Baptist Church	125.98	Antioch Baptist Church	\$ 103.00	
Cedarville Baptist Church	74.00	New Hope Baptist Church	25.00	Cedar Glades Baptist Church	605.00	
Clarksville First Baptist Church	1,251.00	Nimmons First Baptist Church	80.00	Central Baptist Church	87.74	
Clarkville Second Baptist Church	387.82	Peach Orchard Baptist Church	160.00	Emaux Baptist Church	10.00	
Clear Creek Southern Baptist Church	394.45	Picasset First Baptist Church	735.05	Fairdale Baptist Church	59.95	
Coal Hill First Baptist Church	111.09	Pine Grove Baptist Church	84.11	Harvey Chapel Baptist Church	27.71	
Concord Baptist Church	50.00	Pocahontas First Baptist Church	126.58	Jasleville Baptist Church	357.58	
Deer First Baptist Church	50.00	Ravenden Sprag First Baptist Church	1,424.93	Mountain Pine First Baptist Church	116.16	
East Mt. Zion Baptist Church	188.62	Reyno First Baptist Church	281.87	Mountain Baptist Church	50.00	
Hertman First Baptist Church	50.00	Shannon Baptist Church	171.00	Park Place Baptist Church	1,071.00	
Kibler Baptist Church	521.71	Shiloh Baptist Church	60.81	Vista Heights Baptist Church	\$ 44.13	
Lamar Baptist Church	188.05	St. Francis Baptist Church	487.20	GREENE COUNTY BAPTIST ASSN		
Mountainburg First Baptist Church	85.70	Success First Baptist Church	127.86	Alexander Baptist Church	\$ 182.18	
Mulberry First Baptist Church	343.00	Witt's Chapel Baptist Church	\$ 835.00	Beech Grove Baptist Church	88.00	
Oak Grove Baptist Church	410.60	DADE-RUSS BAPTIST ASSN				
Quarry First Baptist Church	773.02	Atkins First Baptist Church	\$ 345.00	Big Creek Baptist Church	81.50	
Greze Baptist Church	124.65	Bluffton Baptist Church	65.00	Brown's Chapel Baptist Church	80.25	
Shady Grove Baptist Church	91.00	Calvary Mission, Gravelley	25.00	Calvary Baptist Church	80.50	
Shilbey Baptist Church	95.24	Danville First Baptist Church	100.00	Central Hill Baptist Church	455.75	
Trinity Baptist Church	445.32	Dardanelle First Baptist Church	21.88	Clarke Baptist Church	272.00	
Union Grove Baptist Church	716.00			Delaplaine Baptist Church	182.19	
Van Buren First Baptist Church	37.21			East Side Baptist Church	138.98	
Van Buren Second Baptist Church				Greene Baptist Church	100.00	
				Finch Baptist Church	253.79	
				Fontaine Baptist Church	18.28	

Family and Child Care contributions

Immanuel Baptist Church	155.00
Lake Street Baptist Church	20.52
Light Baptist Church	407.92
Marauduke First Baptist Church	236.24
New Friendship Baptist Church	395.45
New Liberty Baptist Church	200.00
Butts Chapel Baptist Church	222.00
Oak Grove Baptist Church	36.36
Paragould First Baptist Church	3,400.19
Rabe Chapel Baptist Church	8.00
Rosedown Baptist Church	6.00
Stanford Baptist Church	300.00
Third Avenue Baptist Church	118.20
Unity Baptist Church	263.00
Vines Chapel Baptist Church	58.14
West View Baptist Church	327.33
	\$ 8,005.67

HARMONY BAPTIST ASSN

Altheimer First Baptist Church	\$ 270.56
Anderson Chapel Baptist Church	291.75
Centennial Baptist Church	380.23
Central Baptist Church	45.00
Claud Road Baptist Chapel	64.50
Dollarway Baptist Church	90.71
Douglas Baptist Church	27.20
Dumas First Baptist Church	255.00
East Side Baptist Church	117.77
Forrest Park Baptist Church	288.00
Forest First Baptist Church	2,307.26
Grady First Baptist Church	168.00
Green Meadows Baptist Church	201.68
Greenleaf Baptist Church	38.00
Hardin Baptist Church	765.63
Hickory Grove Baptist Church	463.00
Humphrey Baptist Church	322.55
Immanuel Baptist Church	753.78
Kingsland First Baptist Church	80.00
Lee Memorial Baptist Church	328.75
Lineoed Baptist Church	250.65
Matthews Memorial Baptist Church	431.71
Oak Grove Baptist Church	100.55
Pine Bluff First Baptist Church	7,570.24
Pine Bluff Second Baptist Church	756.50
Pine Bayou Baptist Church	200.00
Ranick Chapel Baptist Church	124.40
Rison Baptist Church	570.00
River Road Baptist Chapel	45.00
Shannon Road Baptist Church	270.00
Shepherd Hill Baptist Church	288.00
South Side Baptist Church	455.00
Star City First Baptist Church	1,627.18
Sulphur Springs Baptist Church	354.00
Watson Chapel Baptist Church	361.00
Yorktown Baptist Church	40.00
	\$ 22,923.84

INDEPENDENCE BAPTIST ASSN

Arbanna Baptist Church	\$ 24.23
Batesville First Baptist Church	762.50
Calvary, Batesville	435.33
Calvary, Tinsco	60.00
Cord Baptist Church	510.00
Deeba First Baptist Church	97.55

Eastside Baptist Church	104.00
Emmanuel Baptist Church	51.00
Floral Baptist Church	112.30
Marcella Baptist Church	74.81
Mountain View First Baptist Church	96.00
Mt Zion Baptist Church	265.00
Newark Southern Baptist Church	156.25
Northside Baptist Church	86.94
Pilgrims Rest Baptist Church	224.00
Pleasant Plains Baptist Church	16.70
Rehobeth Baptist Church	235.37
Rosie Baptist Church	513.62
Ruddell Hill Baptist Church	116.24
Salado Baptist Church	466.00
Sulphur Rock Baptist Church	178.84
White River Baptist Church	995.55
	\$ 5,686.08

LIBERTY BAPTIST ASSN

Caledonia Baptist Church	\$ 150.00
Callon Baptist Church	165.00
Canden First Baptist Church	91.85
Chidester Baptist Church	179.00
Cross Roads Baptist Church	720.00
Cullendale Baptist Church	738.00
East Main Baptist Church	239.35
Ebenezer Baptist Church	398.25
El Dorado First Baptist Church	8,084.50
El Dorado Second Baptist Church	1,284.15
Elliott Baptist Church	159.50
Fairview Road Baptist Church	43.00
Falsenthal Baptist Church	800.00
Galilee Baptist Church	705.38
Grace Baptist Church	16.00
Hillside Baptist Church	736.70
Huttis First Baptist Church	235.00
Immanuel Baptist Church	2,226.04
Junction City First Baptist Church	445.00
Knowles Baptist Church	115.00
Leslie Baptist Church	95.84
Lawson Baptist Church	243.00
Liberty Baptist Church	80.00
Louann Baptist Church	231.59
Maple Avenue Baptist Church	538.25
Marrable Hill Baptist Church	200.00
Midway Baptist Church	284.00
New London Baptist Church	320.76
Norphat First Baptist Church	37.87
Parkview Baptist Church	156.25
Philadelphia Baptist Church	480.64
Salom Baptist Church	1,162.95
Smackover First Baptist Church	1,030.25
Stephens First Baptist Church	500.00
Strong First Baptist Church	114.09
Three Creeks Baptist Church	203.81
Trinity Baptist Church	943.45
Union Baptist Church	727.00
Urbana Baptist Church	80.00
Victory Baptist Church	301.48
Village Baptist Church	488.00
Wesson Baptist Church	1,316.00
West Side Baptist Church	300.00
Wildwood Baptist Church	5,000.00
	\$ 33,133.04

LITTLE RED RIVER BAPTIST ASSN

Brownsville Baptist Church	\$ 287.62
Center Ridge Baptist Church	168.48
Concord First Baptist Church	169.54
Harris Chapel Baptist Church	17.00
Heber Springs First Baptist Church	731.25
Lone Star Baptist Church	255.25
Mt Zion Baptist Church	26.00
New Bethel Baptist Church	50.00
Palmetto Baptist Church	138.00
Pleasant Hill Baptist Church	126.27
Pleasant Valley Baptist Church	55.00
Post Oak Baptist Church	84.27
Quitman Baptist Church	472.21
South Side Baptist Church	335.30
West Side Baptist Church	939.27
Woodrow Baptist Church	223.18
	\$ 4,115.04

LITTLE RIVER BAPTIST ASSN

Ashdon First Baptist Church	\$ 1,026.00
Ben Lomond First Baptist Church	8.37
Bingen First Baptist Church	400.00
Broomston Baptist Church	85.00
Central Baptist Church	827.04
Chapel Hill Baptist Church	1,226.89
Colubus Baptist Church	717.05
Crossroads First Baptist Church	60.00
Foreman First Baptist Church	826.85
Hicks First Baptist Church	258.00
Kernight Baptist Church	152.00
Lakeside Baptist Church	46.80
Lockesburg First Baptist Church	197.25
Lone Oak Baptist Church	60.00
Mt. Moriah Baptist Church	25.00
Murfreesboro First Baptist Church	520.25
New Hope Baptist Church	130.00
Oak Grove Baptist Church	190.25
Ogden Baptist Church	238.50
State Line Baptist Church	75.00
Washington Baptist Church	15.00
Milton First Baptist Church	50.00
	\$ 7,854.45

MISSISSIPPI CO. BAPTIST ASSN

Arnorel Baptist Church	\$ 210.44
Batesville Baptist Church	110.93
Blackwater Baptist Church	53.00
Bluffville First Baptist Church	1,395.50
Brown Chapel Baptist Church	125.00
Calvary, Osceola	116.00
Calvary, Bluffville	300.04
Central Baptist Church	132.93
Clear Lake Baptist Church	356.00
Cole Ridge Baptist Church	84.00
Crossroads Baptist Church	85.89
Dell Baptist Church	171.00
East Side Baptist Church	137.00
Emmanuel Baptist Church	86.55
Gona Chapel Baptist Church	287.32
Joiner Baptist Church	102.00
Keiser First Baptist Church	21.17
Leachville First Baptist Church	316.00
Leachville Second Baptist Church	306.02
Luxora First Baptist Church	148.76
Manila First Baptist Church	270.00
Maple Chapel Baptist Church	171.62
New Liberty Baptist Church	416.00
New Providence Baptist Church	37.93
Nodena Baptist Church	174.95
Number Nine Baptist Church	267.53
Osceola First Baptist Church	913.00
Ridgeway Baptist Church	126.00
Trinity Baptist Church	127.25
Wardell Baptist Church	230.00
Westside Baptist Church	184.00
Whitton Baptist Church	85.71
Wilson First Baptist Church	348.00
Woodland Corner Baptist Church	86.92
Yarbrough Baptist Church	720.00
	\$ 8,621.07

MT ZION BAPTIST ASSN

Bay First Baptist Church	\$ 1.00
Bethabara Baptist Church	141.62
Black Oak Baptist Church	452.58
Bono First Baptist Church	42.03
Bowman Baptist Church	85.45
Caraway Baptist Church	171.42
Cash First Baptist Church	257.10
Central Baptist Church	115.00
Childress Baptist Church	120.00
Egypt Baptist Church	53.90
Friendly Hope Baptist Church	91.88
Jonesboro First Baptist Church	1,758.05
Lake City First Baptist Church	400.15
Mt Pleasant Baptist Church	11.35
Mt. Zion Baptist Church	281.07
Needham Baptist Church	33.88
Netleton Baptist Church	28.00
New Antioch Baptist Church	229.74
New Hope, Black Oak	80.00
New Hope, Jonesboro	55.14



Family and Child Care contributions

Providence Baptist Church	80.00
Rowe's Chapel Baptist Church	55.00
Strawfleur Baptist Church	72.00
University Baptist Church	115.12
Walnut Street Baptist Church	180.50
Westvale Baptist Church	285.12
NORTH ARKANSAS BAPTIST ASSN	5,609.29

Alpena First Baptist Church	881.12
Batavia Baptist Church	128.00
Bea Creek Springs Baptist Church	222.59
Bellefonte Baptist Church	172.50
Berryville First Baptist Church	447.70
Blue Valley First Baptist Church	469.30
Blossy Baptist Church	132.39
Burlington Baptist Church	160.69
Caseville Baptist Church	140.00
Chapel Baptist Church	161.28
Eagle Heights Baptist Church	844.98
Emmanuel Baptist Church	157.03
Eureka Spgs. First Baptist Church	353.00
Everton Baptist Church	157.00
Freeman Heights Baptist Church	246.15
Gaither Baptist Church	42.00
Grandview First Baptist Church	302.64
Green Forest Baptist Church	390.15
Grubb Springs Baptist Church	93.70
Harrison First Baptist Church	7,130.00
Jasper First Baptist Church	374.00
Lakeland Baptist Church	250.00
Lead Hill First Baptist Church	431.70
Marshall First Baptist Church	116.00
New Hope Baptist Church	155.00
Osage First Baptist Church	187.82
Osage Flat Baptist Church	420.38
Osage Baptist Church	300.00
Parthenon Baptist Church	84.00
Rock Springs Baptist Church	461.89
Rudd Baptist Church	265.67
Snowball Baptist Church	64.43
South Side Baptist Church	75.00
Trinity Baptist Church	33.34
Union Baptist Church	640.29
Valley Springs Baptist Church	610.80
Western Grove Baptist Chapel	127.10
Woodlawn Heights Baptist Church	332.17
NORTH CENTRAL BAPTIST ASSN	17,704.51

Angora Baptist Church	15.00
Bee Branch Baptist Church	196.00
Botkinsburg Baptist Church	64.00
Burnt Ridge Baptist Church	134.00
Clinton First Baptist Church	292.75
Fairfield Bay Baptist Church	197.39
Fernox Baptist Church	145.00
Ferdinand Baptist Church	630.95
Immanuel Baptist Church	85.00
Leslie First Baptist Church	57.05
Lexington Baptist Church	200.00
New Hopewell Baptist Church	20.00
Pee Dee Baptist Church	89.00
Plant Baptist Church	10.00

Pleasant Valley Baptist Church	280.66
Rupert Baptist Church	16.84
Scotland Baptist Church	49.36
Shady Grove Baptist Church	692.83
Shirley Baptist Church	171.40
Zion Baptist Church	25.00
NORTH PULASKI BAPTIST ASSN	3,762.15

Amboy Baptist Church	383.00
Barine Cross Baptist Church	2,305.92
Bayou Meto Baptist Church	1,312.31
Berea Baptist Church	25.25
Bethany Baptist Church	44.00
Calvary Baptist Church	630.00
Cedar Heights Baptist Church	1,000.00
Central Baptist Church	420.00
Chapel Hill Baptist Church	1,368.15
Crested Valley Baptist Church	368.00
Fifth Seventh St. Baptist Church	89.51
Gettswanean Baptist Church	365.00
Grace Baptist Church	25.00
Gravel Ridge Baptist Church	327.30
Graves Memorial Baptist Church	140.25
Highway Baptist Church	842.17
Indian Hills Baptist Church	28.00
Jacksonville First Baptist Church	1,610.00
Jacksonville Second Baptist Church	267.75
Levy Baptist Church	180.00
Military Road Baptist Church	102.00
Morrison Chapel Baptist Church	663.00
N.Little Rock First Baptist Church	378.03
Oakwood Baptist Church	252.83
Park Hill Baptist Church	1,292.40
Pike Avenue Baptist Church	359.22
Remount Baptist Church	322.00
Rumyan First Baptist Church	83.77
Sherwood First Baptist Church	131.40
Stamfill Baptist Church	450.00
Sylvan Hills Baptist Church	1,276.00
Unity Baptist Church	85.00
Zion Hill Baptist Church	370.01
QUACHITA BAPTIST ASSN	17,747.38

Board Camp Baptist Church	120.45
Calvary Baptist Church	108.00
Cherry Hill Baptist Church	45.41
Concord Baptist Church	53.10
Cove First Baptist Church	341.87
Dallas Avenue Baptist Church	112.00
DeQueen First Baptist Church	819.00
Gilham Baptist Church	253.50
Grannis Baptist Church	116.08
Hatfield First Baptist Church	260.75
Hatton Baptist Church	384.26
Mena First Baptist Church	1,101.40
New Hope Baptist Church	22.50
Salem Baptist Church	35.00
Vandervoort First Baptist Church	99.17
Wiches First Baptist Church	383.00
Yocana Baptist Church	150.00
RED RIVER BAPTIST ASSN	4,373.29

PULASKI COUNTY BAPTIST ASSN	
Alvander First Baptist Church	67.58
Archeus Baptist Church	13.00
Barnett Memorial Baptist Church	125.86
Brookwood First Baptist Church	100.85
First Southern Baptist	300.81
Galvray Baptist Church	1,000.00
Douglasville First Baptist Church	122.94
East End Baptist Church	267.23
Forest Highlands Baptist Church	321.81
Franklin Baptist Church	15.00
Garden Homes Baptist Church	86.00
Gayer Springs First Baptist Church	4,283.05
Green Hill Baptist Church	141.85
Holly Springs Baptist Church	555.00
Immanuel Baptist Church	3,550.33
Indian Springs Baptist Church	109.04
Ironton Baptist Church	310.60
Lakeshore Drive Baptist Church	120.00
Life Line Baptist Church	262.94
Little Rock First Baptist Church	677.35
Markham Street Baptist Church	257.00
Marlinton Baptist Church	110.00
Nalla Memorial Baptist Church	1,595.29
Natural Steps Baptist Church	281.00
New Life Baptist Church	100.00
North Point Baptist Church	110.00
Parkway Place Baptist Church	10.00
Pine Grove Baptist Church	99.12
Plainville Baptist Church	29.22
Pleasant Grove Baptist Church	100.00
Pulaski Heights Baptist Church	1,395.00
Raymond Memorial Baptist Church	141.85
Roland Baptist Church	257.15
Rosedale Baptist Church	46.50
Shady Grove Baptist Church	452.00
Shannon Hills First Baptist Church	106.00
Sheridan First Baptist Church	108.00
South Hill Baptist Church	272.00
Sunset Lane Baptist Church	764.33
Trinity Baptist Church	16.50
Trinity Baptist Church	141.85
Vivay Ridge Immanuel Baptist Church	112.17
West Side Baptist Church	129.18
Woodlawn Baptist Church	316.00
Woodson Baptist Church	620.81
ROCKY-BAYOU BAPTIST ASSN	8,209.85

Anchor Baptist Church	5.00
Antioch Baptist Church	192.82
Arkadelphia First Baptist Church	487.18
Arkadelphia Second Baptist Church	113.00
Beech Street Baptist Church	2,480.00
Beirne First Baptist Church	330.05
Bethel Baptist Church	212.00
Caddo Valley Baptist Church	216.00
Cedar Grove Baptist Church	149.03
Center Point Baptist Church	230.00
Curtis First Baptist Church	102.97
DeGray Baptist Church	490.00
Emmet First Baptist Church	188.58
Harmony Baptist Church	158.00
Lakeview Baptist Church	317.14
Malvern First Baptist Church	24.00
Park Hill Baptist Church	301.00
Prescott First Baptist Church	708.00
Richwoods Baptist Church	151.50
Shiloh Baptist Church	296.31
South First Baptist Church	480.00
Third Street Baptist Church	150.00
Unity Baptist Church	525.60
SOUTHWEST ARK. BAPTIST ASSN	8,401.38

Ash Flat Baptist Church	124.88
Belview Baptist Church	783.77
Boswell Baptist Church	400.00
Calico Rock First Baptist Church	19.00
Cherokee Village Baptist Church	960.25
Dolph Baptist Church	180.20
Evening Shade First Baptist Church	237.46
Faith Baptist Church	79.98
Finley Creek Baptist Church	50.00
Franklin Baptist Church	100.00
Guion Baptist Church	100.00
Hardy First Baptist Church	165.14
Horsham Bend Baptist Church	189.87
Melbourne First Baptist Church	244.55
Mideay Baptist Church	75.48
Mt. Pleasant Baptist Church	85.00
Myron Baptist Church	25.00
Oxford Baptist Church	24.83
Saddix First Baptist Church	29.01
Sage Baptist Church	182.99
Salem First Baptist Church	344.55
Sidney First Baptist Church	129.00
Sylamore First Baptist Church	10.00
Wissam Baptist Church	220.00
Zion Hill Baptist Church	282.00
ANDERSON BAPTIST CHURCH	115.00



HMB evangelism consultant finds women eager to use gifts

by J. Everett Sneed

"Since 1978, my purpose has been to lead women in using their unique talents and gifts in creative lifestyle evangelism," said Laura Fry Allen, national Evangelism Consultant with Women for the Home Mission Board. "And it is happening. Many women are eager to use their abilities to serve God."

In a presentation to the State Evangelism Conference in Little Rock Jan. 30 - Feb. 1, Mrs. Allen gave several exciting examples of women who are effectively witnessing. One of these is Tena Pinel, who became aware several years ago that something was missing in her life.

It was while working as a consultant for a travel agency that Mrs. Pinel once asked a customer, "Do you know Jesus?" The woman she asked was a missionary to Honduras. After talking several hours with the missionary, she inquired about a church where she could make her decision public. She was directed to First Church, San Antonio, Texas, where Jimmy Allen was pastor. Stepping in late the following Sunday, Mrs. Pinel was obliged to settle for a seat on the front row.

"Would you like to know Jesus?" Dr. Allen asked as he closed his sermon.

"Yes, I would," she replied enthusiastically, rising to her feet.

"You need to wait for the invitation to start," whispered the woman beside Mrs.

Pinel, as she gently eased her back into the pew.

Mrs. Allen and Mrs. Pinel were roommates recently. "Everywhere we went," said Mrs. Allen, "Mrs. Pinel would ask people, 'Do you know Jesus?'" To Mrs. Allen, she explained, "There may be a lot of people out there who are like I was."

In an interview, Mrs. Allen explained how she became a national Evangelism Consultant with Women for the Home Mission Board. Six years ago the HMB took note that women who attended witnessing conferences often said, "That's alright for him but I am a woman." Consequently, the HMB, encouraged by Carolyn Weatherford, Executive Director of the Woman's Missionary Union, asked Mrs. Allen (at that time Miss Fry) to take on a pilot project to encourage women in witnessing. Mrs. Allen, who had been a missionary for the Home Mission Board and a state BSU director, conducts conferences in which she spends one-third of the time dealing with spiritual growth, one-third with witnessing and one-third with practical suggestions on how to witness. "The greatest response," she said, "is in the area of spiritual growth, followed closely by how to witness."

"Since our society changed and more women are out in the workforce," said Mrs. Allen, "women are in a new role and face

new opportunities. Women who are open to the leadership of the Holy Spirit will find many opportunities to witness.

"Sometimes women feel that they can't witness because of family responsibilities. With proper planning, difficulties can be minimized." For example, she points to the

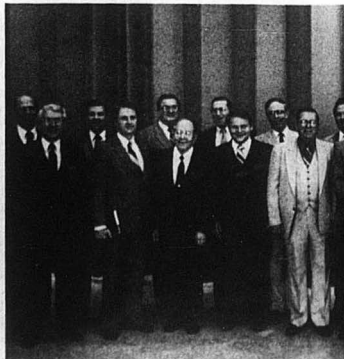
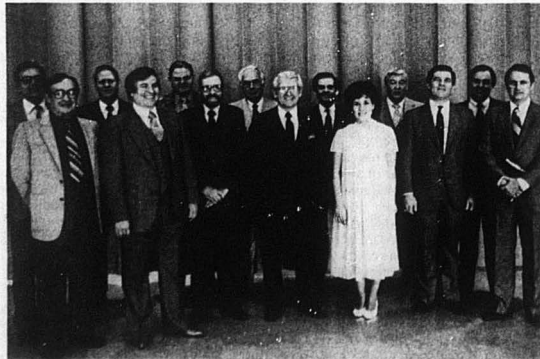


Family responsibilities don't have to interfere with witnessing. Laura Allen's son Jason travels with her to meetings.

Full-time evangelists who attended the conference were (left to right, front row) Clarence Hill, 319 Cain Road, Hot Springs, phone 767-6489, a music evangelist; Johnny A. Green, P.O. Box 500, Wynne, phone 238-7577, preaching; Tom Pitman, Rt. 2, Marion, phone 735-0653, preaching; (State Evangelism Director Clarence Shell) Susie Little, 8118 W. Markham I-C, Little Rock 72205, phone 224-0547, music; and Jack Hazlewood, P.O. Box 5699, Little Rock 72215, phone 225-6408, preaching; (SBC President James T. Draper Jr.) (Back row, left to right) K. Rex Easterling, 626 W. Olive, Rogers 72756, phone 635-7050 or 636-3451, preaching; Gene Ellis, Star Rt. 11, Box 103, Hot Springs 71901, phone 767-3689, preaching; Ben Bates, Rt. 3, Petit Jean Mountain, Morrilton 72110, phone 727-5760; Billy Walker, Southern Baptist College at Walnut Ridge;

Bill Fitzhugh, P.O. Box 1325, Pine Bluff 71613, 247-5769; Herb Shreve, P.O. Box 78, Hatfield 71945, phone 389-6624, preaching; and Paul Jackson, P.O. Box 5791, Little Rock 72215, 664-5040, preaching.

Associational Chairmen of Evangelism for Arkansas, shown with Clarence Shell and SBC President James T. Draper Jr. (front row left) are Malcolm Sample, Conway-Perry; Randall Cross, Carey; John A. Williams, Delta; John S. Ashcraft, Pulaski County; Mark Tolbert, Current-Gains; and Al Sparkman, Ashley County. (Back row) Bill Hilburn, Caroline; Frank Jones, North Pulaski; Ron Griffin, Mt. Zion; L. Ray Sease, Little River; John C. Robbins, Bartholomew; Clytee Harness, Garland County; and Paul L. Dennis, Washington-Madison.



fact that her own 21-month old son, Jason, travels with her to conferences. She and her husband, Bruce, an associate in the Georgia Evangelism Department, plan their schedule together in such a way that when one is out of town the other will be out also. "Often we are able to go to meetings together. It has worked well, and Jason loves to travel," she said.

(Help in witnessing, ministry and personal growth will be available for women in a national meeting entitled, "Dayspring," to be held at Travis Avenue Church, in Fort Worth, Texas, April 12-14, 1984. The meeting will feature some of the best known women speakers in Southern Baptist life, as well as 40 resource conferences. More information can be obtained through the state WMU office.)

Mrs. Allen said that many women are feeling frustration because there are, apparently, so few places for women to serve in full-time vocational Christian ministry. "This frustration is particularly evident on our seminary campuses," she said.

Mrs. Allen emphasized that she is not ordained nor does she wish to be. "Ordination is a man-made structure," she said. "Its only value is to fulfill certain governmental requirements. The sad thing is that though God is calling women for special ministry because of the sense of rejection they are experiencing, many are leaving Baptist life.

"We tell our Girls in Action and our Acetees, 'Do what God tells you to do,'" she continued, "and later we say, 'You need to rethink God's call.'"

Mrs. Allen feels that Southern Baptists must come to grips with what women may and may not do in our churches and denominational life. "In the meantime," she said, "I want to encourage women who are seeking places of full-time vocational service to write down exactly what they feel God has called them to do. Often the HMB can help them find places of services."



AEN photos / J. Everett Sneed

**Next week:
an interview with
Vance Havner**



SBC president Jimmy Draper visits with ABSC executive director Don Moore during the state evangelism conference Jan. 30 - Feb. 1 in Little Rock.

Pastoral leadership for growing churches

*A personal growth experience for
pastors and church staff*

Select one of four locations

Monday-Tuesday

February 20-21

● East Side, Ft. Smith

● First, West Memphis

Thursday-Friday

February 23-24

● Park Hill, North Little Rock

● First, Pine Bluff

Schedule: 2-5 p.m. and 7-9 p.m. First day
8:30 a.m.-noon Second day

Conference Leaders

Conference Topics

- Clarifying the Growth Vision
- Personal Leadership Style and Effectiveness
- Pastoral Authority: Gaining Influence for Leadership
- Motivating Persons for Growth



Joe Stacker, Secretary
Church Administration Dept.
BSSB



Truman Brown
Church Administration Dept.
BSSB



A Church Administration Project of the Arkansas Baptist State Convention

SBC hunger gifts set record for sixth consecutive year

NASHVILLE, Tenn. (BP)—Southern Baptists continued their record-setting pace in gifts to worldwide hunger relief last year, surpassing the previous year's total for the sixth consecutive time.

More than \$5,996,000 was given in 1983 to hunger funds administered by the Southern Baptist Foreign and Home Mission Boards.

The Foreign Mission Board reported receipts of \$5,406,036 for world hunger, while the Home Mission Board received \$590,675 for domestic hunger. Additionally, the Foreign Mission Board received \$687,714 for general relief ministries.

The figures do not reflect monies given for hunger that were utilized in local churches, associations and state conventions.

The hunger contributions represent an overall increase of \$462,927 over the previous record of \$5.53 million set in 1982. FMB gifts increased \$122,252; HMB giving was up \$340,675.

Officials at both mission boards, along with the Christian Life Commission, which coordinates Southern Baptist awareness and action on hunger issues, praised the record giving.

John Cheyne, human needs ministries consultant at the FMB, said the hunger funds contributed to the "holistic ministry" of churches on the mission fields. "Thousands have come to know Christ as Savior because they first saw that Southern Baptists cared," he said.

W. David Lockard, CLC director of organization, said the hunger funds represent "the honest response of concerned Christians who are mindful of our responsibilities as the people of God."

Cheyne and Lockard also pointed out gifts to world hunger represent only partially the total investment in hunger ministries through the ongoing service of Southern Baptist supported missionaries at home and abroad.

"Through our two mission boards, Bat-

tists have the best possible avenue for meeting the needs of hungry people," said Lockard. "Every cent of hunger money is used directly in hunger ministries."

Cheyne said more than 220 hunger-related projects were undertaken by missionaries and national workers in 45 countries. "In addition," he said, "the work of hundreds of lay volunteers multiplied the total benefit of the funds committed."

Even with the record giving, needs still surpassed contributions. More than \$7.2 million—which included a \$1 million-plus balance on hand at the end of 1982—was disbursed last year through the FMB's human needs ministries office, according to Cheyne. Yet, he added, \$8.27 million in requests remained unmet. He indicated some of the most urgent needs will be met with the record \$1.85 million in hunger gifts in December.

Nathan Porter, national consultant for

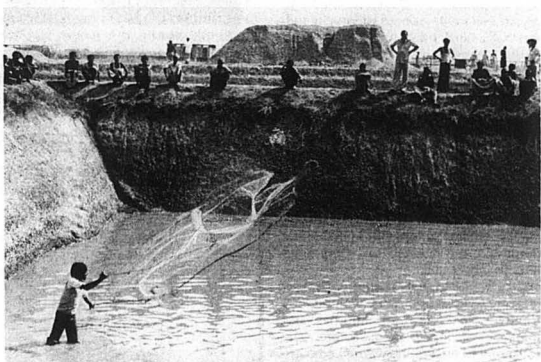
domestic hunger at the HMB, said the 1983 figures indicate "when Southern Baptists become aware of hunger needs, they do respond."

"Thousands who have received emergency food relief also say 'thanks for caring,'" he added.

Porter urged Baptists to add to their giving "prayer support for missionaries who are touching the lives of thousands who suffer in poverty and hunger."

Lockard pointed out the contributions also indicate the depth of Southern Baptist resources.

"Most of us live in luxury when compared to millions who struggle desperately for daily bread," he explained. "At the same time, this generous response reflects sacrificial giving on the part of many people. We can make a difference. And we have the opportunity and resources to do even more."



(BP) photo / Don Rutledge

In a country chronically afflicted with poverty and food shortages, Southern Baptist missionaries to Bangladesh use ponds of fast-growing fish to teach people self-sufficiency

National bi-vocational ministries council forms

JACKSON, Miss. (BP)—The National Council for Bi-vocational Ministries was organized Dec. 15-16 in Jackson, Miss.

Twenty persons from across the nation were present for the meeting, sponsored by the Home Mission Board of the Southern Baptist Convention.

Ralph Halbrooks, director of the association missions department for the Alabama Baptist Convention, was elected president. The vice-president is John Saunders, Florida Baptist Convention and James Nelson, director of missions for the Marshall Association in Alabama and Don Evans, rural-urban director for the Missouri Baptist Convention were elected directors.

The council's next annual meeting will be Dec. 6-7, 1984, in Jackson.

Nelson, former director of association missions for the Home Mission Board, spoke on

the development of emphasis on bi-vocational ministries in the Southern Baptist Convention. Jerry Smith, a bi-vocational pastor who is part owner and manager of a ski lodge in Red River, N.M., cited models of bi-vocational ministry, told of his pilgrimage as a bi-vocational pastor and of opportunities for ministry "in the market place."

The group considered 34 priorities of bi-vocational ministry and majored on the three highest: enhancing the self image of the 10,000 bi-vocational pastors in the Southern Baptist Convention; alerting Christian ministry students to choose and nurture a second vocation as an enabler or means for ministry, and providing for multi-staff churches through use of bi-vocational ministers.

The council adopted five projects: develop

a handbook for bi-vocational ministers; compile and edit materials for a book, "Models of Bi-Vocational Ministry"; compile and edit materials for a pamphlet, "Experiences of Ministry in the Market Place"; develop a syllabus for a course on bi-vocational ministries, and make a recommendation for a workable, nationwide plan for placement of bi-vocational ministers.

Hollis Bryant, consultant in the Cooperative Missions Department of the Mississippi Baptist Convention Board, pointed out five conferences for bi-vocational ministers in Mississippi had been held during 1983 and five are planned for 1984.

The group previewed a video tape being produced in Jackson and funded by the Home Mission Board titled "Whatever It Takes."

Reagan renews appeal for his social agenda

WASHINGTON (BP)—Declaring that the American people hunger for "spiritual revival," President Reagan told Congress and the nation Jan. 25 that school prayer, tuition tax credits and a ban on abortions remain top priorities for his three-year-old administration.

In his third State of the Union message since taking office as 40th president, Reagan received thunderous applause when he challenged assembled lawmakers to return oral prayer to public school classrooms.

Reminding Congress that it practices daily "a 200-year-old tradition meant to signify America is one nation under God," the president asked: "If you can begin your day with a member of the clergy standing right here leading you in prayer, then why can't freedom to acknowledge God be enjoyed again by children in every schoolroom across this land?"

Reagan, whose 43-minute address included several assertions America is "good," added: "America was founded by people who believed that God was their rock of safety. He is ours." Taking a line from

Abraham Lincoln, he said: "I recognize we must be cautious in claiming that God is on our side. But I think it's all right to keep asking if we are on his side."

On tuition tax credits for parents who send their children to nonpublic schools, Reagan pledged he will "continue to press" for legislation to "soften the double payment for those paying public school taxes and private school tuition."

In spite of the decisive defeat of his proposal last year in the GOP-controlled Senate, Reagan renewed his argument tuition tax credits would provide "greater competition among public and nonpublic schools." He added: "Without standards and competition there can be no champions, no records broken, no excellence in education or any other walk of life."

Unlike their enthusiastic response to his views on public school prayer, lawmakers sat quietly during the tuition tax credit remarks.

On another of his favorite social issues, Reagan also renewed his commitment to

curb abortions. But he stopped short of advocating a constitutional amendment to ban the practice altogether, declaring: "We should rise above bitterness and reproach" in addressing the problem.

"... if Americans could come together in a spirit of understanding and helping," he said, "then we could find positive solutions to the tragedy of abortion."

Reagan received his longest and most bipartisan ovation of the night when he addressed a section of the speech to the people of the Soviet Union, some of whom undoubtedly heard it over the U.S.-funded Voice of America.

Acknowledging "our governments have had serious differences," he went on to declare: "But our sons and daughters have never fought each other in war. If we Americans have our way, they never will."

On nuclear weapons, Reagan said, "there is only one sane policy, for your country and mine, to preserve our civilization in this modern age: A nuclear war cannot be won and must never be fought."

Senate panel okays Vatican funding; House hearing set

WASHINGTON (BP)—A Senate appropriations panel has informally approved a State Department request to reprogram funds to pay for a full diplomatic mission to the Vatican, but its House of Representatives counterpart has held up action pending an early February hearing.

Sen. Paul Laxalt, R-Nev., chairman of the Senate Subcommittee on Commerce, Justice, State and Judiciary, has given the State Department his approval of a request to reprogram fiscal 1984 funds for the Vatican mission, according to a subcommittee spokesman.

Laxalt's approval, the spokesman said, noted the objection of Sen. Ernest F. Hollings, D-S.C., ranking minority member of the panel and an outspoken opponent of the Reagan administration's decision to end a 116-year-old U.S. policy against full diplomatic relations with the Holy See.

Reprogramming requests from federal agencies—such as the one from the State

Department for Vatican mission funding—no longer require formal approval of the congressional appropriations committees with jurisdiction over their funding. However, House and Senate subcommittee spokesmen agree the State Department is unlikely to go against the informal disapproval of appropriations panels on either side of Capitol Hill.

Although other members of the Senate subcommittee may join Hollings in opposing the move, a panel spokesman said Laxalt, considered President Reagan's closest friend in the Senate, is not likely to back away from his support of the White House on the controversial issue.

The House Subcommittee on Commerce, Justice, State, the Judiciary and Related Agencies, chaired by Rep. Neal Smith, D-Iowa, has scheduled a Feb. 6 hearing to consider the reprogramming request. The State Department has asked for a shift in its fiscal

1984 budget to provide \$833,000 and a staff of nine for the Vatican embassy. The current State Department budget includes \$481,000 for the four-person staff of presidential representative William A. Wilson to the Vatican.

A House subcommittee spokesman said the hearing was scheduled to hear only from State Department witnesses on the reprogramming request but did not rule out the panel looking at the underlying controversy surrounding the appointment of an ambassador to the Vatican.

The hearing will be the first Vatican embassy-related forum in the 98th Congress, despite action last year repealing the long-standing ban on funding of a diplomatic mission to the Holy See. Early this year, the White House established full diplomatic ties with the Vatican and named Wilson, who faces confirmation hearings in the Senate, as ambassador.

Draper tells White House Baptists oppose Vatican ties

WASHINGTON (BP)—Southern Baptist Convention President James T. Draper Jr. told a top Reagan administration official Jan. 18 Southern Baptists are virtually united in their opposition to President Reagan's appointment of an ambassador to the Vatican.

Draper, along with Charles Stanley, pastor of First Church, Atlanta, and a handful of evangelical leaders, told presidential assistant for national security affairs Robert C.

McFarlane millions of evangelicals oppose the Jan. 10 move, restoring full diplomatic relations with the Holy See.

Draper told Baptist Press after the White House meeting he told McFarlane, "You've touched an issue that Southern Baptists would almost be united on."

The Euless, Texas, pastor also repeated his view the Vatican action "has undercut the support of millions of evangelical Christians"

for President Reagan.

Draper said while McFarlane sought to explain Reagan's action restoring relations after 116 years by saying it would give the U.S. a better "pipeline" to the Vatican, he "gave no real reasons."

McFarlane appeared "cowed" by the objections registered during the meeting, Draper said. "There was just no rationale to support this appointment."

Analysis

Beirut: bombs, bullets, barbed wire—and Baptists

by David King

(Editors note: David King, a Southern Baptist missionary in Lebanon since 1959, wrote this unsolicited letter to the Foreign Mission Board. It is offered as a first person analysis of Lebanon today).

WEST BEIRUT, Lebanon (BP)—A few years ago I wrote an article entitled "Learning to Live With Guns." Now it is far more than guns. It is car bombs, mortar bombs and airplane bombs. It is artillery shells, long range rockets, rocket-propelled grenades, naval artillery, tank cannons, recoilless rifles and all manner of smaller guns.

Embassies and institutions of all the member countries of the multinational "peace-keeping" force are now barricaded by razor-sharp barbed wire atop earth mounds all around. Streets are sealed off. Traffic, already chaotic and jammed in Beirut, has gotten worse.

Is there any hope for a solution?

Most observers are pessimistic. The truth is, unless attitudes change, conflicts in the Middle East will continue to rage and to take their toll in lives lost and property destroyed, people maimed and bitterness engendered by increasing self-righteousness. People will continue to blame other parties for the mess and refuse to acknowledge any responsibility for what is happening. So far there is no

indication of any willingness to repent or to forgive or to back down or even to compromise for the sake of the common good.

The answer is obvious to those who know the Lord Jesus Christ as their personal Savior and have experienced his transforming power. Only Christ can transform hate to love, jealousy to forgiveness, ashes to beauty, tears of sadness to tears of joy. Christ is the only hope. But because religion and politics are completely interwoven in the Lebanese system, the very mention of Christ has political overtones.

One little girl at our Baptist school asked the missionary principal's wife, Leola Ragland, "Are you a Christian?" Mrs. Ragland answered with tact and Holy Spirit wisdom, "I love Jesus." The little girl sighed with relief and said, "Oh good. I was afraid maybe you were one of those murdering Christians." How ironic. What a travesty on the name of Christ.

Eleven Baptist churches and assorted missions are trying to overcome such an image by proclaiming the truths of God's word about man's sinfulness and God's love and the transforming power of the gospel; demonstrating that Christianity means love—not hate, brotherhood—not bombs, forgiveness—not revenge, helpfulness, kind-

ness, gentleness and peace; and demonstrating Christ's love through distributing thousands of dollars in aid to stricken families.

Some families have lost their homes and everything they own. Often families have lost breadwinners, who have been killed or hospitalized.

Churches are reaching out in love to their members and others in need in their communities in the name of Jesus—the name which more than any other crosses barriers and touches people's hearts.

No, we haven't seen any widespread turning to Christ as yet, though we long for that to happen and do all we can to stimulate it. But here and there, in ones and twos, sometimes in threes and fours, people are coming to Christ, finding in him peace, comfort and courage in the midst of trial.

Shells are exploding as I write this. One just whooshed over the house and crashed in flames below on the hillside. But the Lord Jesus is here, and he is our peace.

We are thankful to God that Baptist churches are ministers of reconciliation in the midst of bombs, bullets and barbed wire.

Missionary force gain highest since 1978

RICHMOND, Va. (BP)—Southern Baptists last year recorded the largest percentage gain of foreign missionaries since 1978 and the second largest since 1969, a possible indication that Bold Mission Thrust is taking hold.

A 4.01 percent net gain over 1982 resulted in part from a drop in missionary resignations and an increase in journeymen appointments for two-year terms.

Appointments for career missionaries numbered 190, the third highest ever recorded. Career resignations at a 2.61 percentage rate were the lowest since 1966. Auxiliary personnel, including journeymen, increased 18.37 percent over 1982, about a fourth of the net gain.

Hankins' tours

Hawaii, \$779, June 5, 1984; Washington, D.C. - New York, from \$400, Oct. 6, Nov. 17, 1984; Cape Cod and New England, from \$489, Oct. 27, 1984; Fall foliage tour, from \$150, Oct. 22, 1984.

For information, contact

Rev. David M. Hankins Jr.
51 Broadmoor Dr., Little Rock 72204
Phone (501) 565-4123

China Tour

June 20 - July 7
Experienced Tour Leader
Write: Dr. Jim Adams
Box 1469, Texarkana, AR 75504

Plan now to attend the Fifteenth Annual CHURCH MUSIC WORKSHOP

February 23-24, 1984
Ouachita Baptist University
Arkadelphia, Arkansas

Featuring

- Ovid Young and Stephen Nielson
- A regional premiere of their new work "Song of Thanksgiving"
- Mabel Boyter, Children's Choir Specialist

For further information, please contact

Dr. Paul Hammond
Box 3710
Ouachita Baptist University
Arkadelphia, AR 71923

W
I
FITNESS
N
E
S
S

Christian "Aerobic" Workshop

Saturday, March 3

9:30 a.m. - 4:30 p.m.

North Little Rock, Ark.

Become certified to teach this
"Uplifting" program in your church
Call Nancy Hamilton - 835-6638.

WORLD'S LARGEST MANUFACTURER
OF
FIBERGLASS
CHURCH PRODUCTS

- STEEPLES
- WALL CROSSES
- STAINED FIBERGLASS WINDOWS
- BAPTISTRIES
- BAPTISTRY HEATERS

Write for free
color brochure

Fiberglass Specialties

A/C 214 657-6522 Box 210 Henderson, Texas 75652

Arkansas Baptist State Convention Contributions

Total cash contributions received in office of Executive Director of Executive Board January 1, 1983 through December 31, 1983. Notify Don Moore, P.O. Box 552, Little Rock, Arkansas, 72203 if any errors are found in this report.

CHURCHES	COOPERATIVE PROGRAM	DESIGNATED GIFTS	CHURCHES	COOPERATIVE PROGRAM	DESIGNATED GIFTS	CHURCHES	COOPERATIVE PROGRAM	DESIGNATED GIFTS
STATE AT LARGE						CROSSROADS CHURCH		
INDIVIDUAL RECEIPTS	55.00	36,592.16	PLEASANT GROVE	60.00			191.57	386.00
ARK BAPTIST FUND	23,146.27	138,430.98	PRAIRIE GROVE	130.00		ASSOCIATION TOTALS	110,361.43	42,186.67
S A WHITLOW, MEL			SALINE	1,073.54	280.00			
HUBER L DRUMRIGHT			SELMA	172.79				
WJF CONTRIBUTIONS	1,228.70	1,209.27	UNION HILL	447.15				
RUSSELLVILLE 1ST	51,859.97	13,621.28	WARREN 1ST	405.63	22,632.89			
ND PLEASANT		80.10	WEST SIDE WARREN	1,852.47	404.18			
JEICHO - INACTIVE			WILMAR	2,570.94	2,181.94			
VANDERBILT AVENUE			SOUTHSIDE	1,088.04				
BETHANY, MANILA			SPANISH FELLOWSHIP	202.26				
TEMPLE, M. MEMPHIS			ASSOCIATION TOTALS	124,442.91	45,492.01			
NEW LIFE	14,000.00		BENTON COUNTY					
KIMBERLING HILLS		50.00	BENTON ASSN					
CALVARY, ASHDOWN			BELLA VISTA	25,808.71	14,666.53			
GRACE FELLOWSHIP BA	171.00	2,335.04	BENTONVILLE 1ST	26,144.32	8,719.23			
OPEN DOOR MISSION	60.00		CENTERSTON 1ST	5,175.55	1,570.07			
THE SUNDAY SCHOOL B	1,359.31		CENTRAL AVE., BENTON	1,721.81	82.32			
ASSOCIATION TOTALS	94,329.83	192,318.83	DECATUR 1ST	8,545.22	3,546.67			
			GARFIELD 1ST	2,400.00	2,000.00			
			GENTRY 1ST	18,454.08	4,623.26			
			GRAVETTE 1ST	2,700.60	2,586.50			
			GUM SPRINGS		2,210.97			
			HAYWARD AVE., SILDAM	6,041.80	3,026.52			
			HIGHFILL 1ST	3,521.72	4,139.49			
			IMMANUEL, ROGERS	34,999.86	10,849.04			
			LAKEVIEW	1,255.75	1,120.84			
			LOWELL	5,212.70	1,115.77			
			MASON VALLEY	3,182.69	1,436.00			
			MONTE NE	559.96	235.02			
			OPEN DOOR	5,500.83	10.00			
			PARK STREET, BENTON	618.33	35.00			
			PLEASANT HILL	899.44	239.21			
			ROGERS 1ST	61,124.57	10,531.21			
			SILVER SPRINGS 1ST	20,677.23	2,077.23			
			SUGAR CREEK	671.15				
			SULPHUR SPRINGS 1ST	721.75	821.49			
			SUNNY SIDE	34,455.16	195.29			
			TRINITY, ROGERS	679.91	422.25			
			TWELVE CORNERS	817.20	283.00			
			RO-LYNN HILLS	520.00	137.00			
			FAITH	1,609.00	1,609.00			
			LAKESIDE	4,902.46	1,686.00			
			ASSOCIATION TOTALS	281,196.51	106,053.04			
			BIG CREEK					
			BIG CREEK ASSN	26.00	80.50			
			COUNTRY LINE	120.00	125.00			
			ELIZABETH	225.00	85.00			
			ENTERPRISE	150.00				
			FLORA					
			GUM SPRINGS					
			MAMMOTH SPRING	1,524.10				
			MT. Zion	180.00	384.40			
			SPRING RIVER	585.00	605.85			
			VIOLA	330.00	1,598.72			
			ASSOCIATION TOTALS	3,100.10	2,879.47			
			BLACK RIVER					
			BLACK RIVER ASSN	3,000.00				
			ALICIA	2,644.72	603.00			
			ARAGON	420.00	72.00			
			BEAUFORT	174.66				
			BLACK ROCK 1ST	601.08	309.13			
			CAMPBELL STATION	1,133.33	546.06			
			CLEAR SPRINGS					
			COLLEGE CITY	1,045.26	532.00			
			DIAZ	1,872.32	467.52			
			GRUBBS 1ST	1,659.61	712.05			
			HORSESHOE	72.05	75.00			
			HOKIE 1ST	2,363.75	1,361.94			
			HIDDEN 1ST	7,024.29	3,307.02			
			IMMANUEL, NEWPORT	4,972.00	2,810.50			
			JACKSONPORT	2,548.00	554.26			
			MURPHY'S CORNER	120.00				
			NEW HOPE 811, SMITH	887.40	438.07			
			NEW HOPE 2E, HARDY	42,935.06	7,270.28			
			OLD WALNUT RIDGE	1,009.75	643.31			
			PITTS	399.71	98.63			
			RAVENHURD 1ST	504.43	80.00			
			SMITH CREEK	1,030.35	1,030.35			
			SMYTHVILLE	3,507.52	1,098.36			
			SPRING LAKE	2,150.94	1,035.07			
			TRINITY	2,196.56	2,182.07			
			TUCKERMAN 1ST	2,425.00	1,455.86			
			WALNUT RIDGE 1ST	23,741.88	12,490.53			
			WHEAT OAKS	100.00	434.22			
			CALVARY, WAL RIDGE	931.04				
			SOUTHSIDE	951.25	781.00			
			ASSOCIATION TOTALS	106,053.04	80.50			
			CAUDD RIVER					
			CAUDD RIVER ASSN	1,583.06	36.68			
			ALICIA	940.76				
			BLACK SPRINGS	186.00	20.00			
			CAUDD GAP	100.00				
			GLENWOOD 1ST	10,737.58	3,134.56			
			HILL SIDE	1,067.10	1,332.19			
			LAKE DUACHITA					
			LIBERTY	5.00				
			LITTLE HOPE	423.49				
			MT GLEAD	524.75	100.00			
			MT IDA 1ST	7,439.36	3,110.70			
			MURPHY	770.00				
			OKRA GROVE					
			OWENS 1ST	2,555.55	614.00			
			PENCIL BLUFF	1,465.73	1,032.63			
			REFUGE	1,766.33	175.10			
			SULPHUR SPRINGS	323.62				
			PINE RIDGE	233.20	85.00			
			BIG FORK MSSN	48.00	80.00			
			ASSOCIATION TOTALS	30,267.23	10,837.16			
			CALVARY					
			CALVARY ASSN	793.00	25.00			
			ANTIUCH	1,982.24	990.00			
			AUGUST 1ST	11,811.87	9,241.43			
			BEERE 1ST	14,462.74	5,898.57			
			BETHANY	765.13				
			CENTRAL, BALD KNOB					
			COTTON PLANT 1ST	7,127.00	3,619.45			
			CROSBY	1,277.01	350.18			
			EL PASO	797.11	150.86			
			GOOD HOPE	1,163.47	811.87			
			GRACE	2,400.00	1,211.94			
			GREGORY	1,417.00	465.00			
			GRIFFINVILLE 1ST	1,980.44	980.44			
			HIGGINSON	2,871.27	2,330.00			
			HUNTER 1ST	1,808.34	630.00			
			ANDERSON 1ST	20,493.32	6,239.98			
			KENSSET 1ST	8,743.85	987.29			
			LIBERTY	777.17	602.13			

CHURCHES	COOPERATIVE PROGRAM	DESIGNATED GIFTS	CHURCHES	COOPERATIVE PROGRAM	DESIGNATED GIFTS	CHURCHES	COOPERATIVE PROGRAM	DESIGNATED GIFTS
MCCRORY 1ST	6,678.00	2,986.33	BUIE	639.52	187.00	NEW HOPE	6,493.80	1,117.76
MCCRORY 1ST	3,364.05	1,470.80	CALVARY, BENTON	15,291.58	2,934.99	NORTH SIDE/CHARLEST	1,816.07	956.58
MCCRORY 1ST	534.54		CENTRAL HOT SPRING	22,743.47	7,800.95	NORTH SIDE/FT SMITH	4,758.78	1,029.20
MORRUM, DISBANED			GILEAD	97.32		OUTH SIDE/FT SMITH	8,275.42	8,275.42
MORTON	1,958.31	1,189.55	GRAVEL HILL	1,689.49		PALESTINE	721.99	964.01
MT HEBRON	2,652.23	754.78	HIGHLAND HEIGHTS	27,906.55	9,121.69	PARIS 1ST	14,851.00	6,626.00
NEWBORN 1ST	4,637.08	580.00	HILLSIDE, ALEXANDER	97.32	97.00	PARK, PINEVILLE	7,997.98	1,886.30
PATTERSON 1ST	1,045.05	329.45	HOT SPRINGS FAITH	47,928.73	15,355.88	PINES LOG		365.28
PLEASANT GROVE	2,025.50	816.88	HOT SPRINGS 2ND	10,332.22	22,201.58	RATCLIFF 1ST	2,300.60	411.34
PLEASANT VALLEY	111.00	111.00	HUNTSVILLE	97.32	97.00	REX HILL	4,911.16	302.40
RAYNOR GROVE	140.00		LAKE MARITON	5,139.56	2,311.19	RYE HILL	13,859.03	2,217.07
ROCKY POINT	990.20		LAKESHORE HEIGHTS	4,319.76	3,114.12	SOUTH SIDE/BONEVILLE	3,188.40	1,607.60
ROSE BUD	6,007.00	1,000.86	LEWISDALE	1,108.21	2,150.83	SOUTH SIDE/FT SMITH	11,022.10	2,069.45
SEARCY 1ST	82,747.27	17,115.74	LEE CHAPEL	5,187.75	2,787.70	SPRADING	6,377.00	2,069.75
SEARCY 2ND	1,236.92	1,239.03	LEONARD ST/HOT SPGS	2,886.38	1,558.48	TEMPLE, FT. SMITH	9,485.72	1,799.19
TEARLE, SEARCY	17,791.18	2,710.33	LONGSAIL	2,796.37	2,482.83	TRINITY, FT. SMITH	9,881.35	50.00
TRINITY, SEARCY	6,271.96	6,655.48	MALVERN 3RD	22,948.37		UNION HALL		
TUPELO 1ST	3,943.78	1,452.56	MEMORIAL	5,625.00	790.51	VESTA		
UNION VALLEY 1ST	15,932.24	15,932.24	MT VERNON	1,000.80	31.05	WENONAH PARK	4,800.00	3,320.76
WEST POINT	715.00	107.00	OLD UNION	2,403.53	331.05	DELAWARE	3,732.65	462.31
VALLEY	8,423.00	2,289.83	OWENSVILLE	2,532.00	1,612.00	HOPEFT MISSION		
WARREN HILL			PEARCY	1,400.17	1,610.67	WESTSIDE	744.18	1,877.70
DENMARK	595.00		PINEY	10,659.48	628.28	CENTRAL 1ST SUO	1,000.00	639.11
ASSOCIATION TOTALS	252,954.47	90,530.93	PLEASANT HILL	3,404.00	932.00	SOUTH/SIDE, PARIS	1,502.66	600.00
CAREY			RIDGECREST	1,402.99	738.80	FAITH BAPTIST CHURC		
CAREY ASSN			RIVERSIDE	1,977.69		ASSOCIATION TOTALS	911,008.84	297,963.74
BEARDEN 1ST	6,451.23	1,372.90	SALEM	10,078.83	33,399.98	CONWAY-PERRY		
BELSDA	4,407.08		NORTH MAIN	1,155.36	81.25	CONWAY-PERRY ASSN		
CALVARY, CANTON	9,150.05	865.00	SHOREWOOD HILLS	533.45		ADONA, DISBANED		
EAGLE HILLS	6,000.70	306.00	TRINITY, BENTON	13,979.70	2,409.00	BIGELOW	1,340.20	500.00
FORDCY 1ST	1,587.00	1,587.00	TRINITY, BENTON	5,114.33	2,820.00	CASA VIE	974.97	647.20
HARDY 1ST	22,878.93	15,880.97	WALNUT VALLEY	1,630.70	725.97	HARDY	2,214.43	521.04
HAMPTON 1ST	9,449.82	926.60	WAGNER C RDAD	14,308.51	3,649.89	HOUSTON	301.36	435.92
HARMONY	623.72		WATERGATE	1,488.00	1,488.00	HOBBSVILLE 1ST	10,570.61	674.23
HOLLY SPRINGS	1,167.94		MAGNET COVE	2,431.70	674.13	NIMROD 1ST	1,915.45	862.50
MANNING	1,700.68	100.00	HEADWATER	336.20	345.34	PERRY	250.00	1,050.00
NEW HOPE	1,583.48	1,000.00	HOVAL	502.94		PERRYVILLE 1ST	6,271.15	120.00
DUCHITA	1,692.00	1,109.00	ASSOCIATION TOTALS	423,953.87	119,974.30	PLEASANT GROVE	1,260.00	202.10
PROSPECT	800.64	763.25	CLEAR CREEK			PLUMBERVILLE 1ST	1,000.50	933.80
SHADY GROVE	1,986.26	623.38	ALMA 1ST	467.69	472.07	SOLGERSVILLE 1ST	2,922.22	47.00
SOUTH SIDE, FORDCY	23,316.00	20,294.54	ALTUS 1ST	515.42	125.00	STONE POINT	2,021.18	1,271.45
SPARKMAN 1ST	17,791.18	282.00	BATSON	2,900.00		UNION VALLEY	592.22	47.00
THOMAS 1ST	215.00		CASS	4,996.87	55.05	THORNBURG	2,021.18	1,271.45
TINSMAN 1ST	136.77	210.60	CDARVILLE	28,228.39	10,488.26	UNION VALLEY	480.00	331.00
TULIP MEMORIAL			CLARKSVILLE 1ST	2,852.86	1,769.07	UPPEL		50.30
ASSOCIATION TOTALS	85,550.10	44,975.81	CLARKSVILLE 2ND	1,024.72	1,355.37	CICLIE H CHAPEL		
CAROLINE			COAL HILL 1ST	12,532.66	169.15	ASSOCIATION TOTALS	29,186.07	23,524.81
CAROLINE ASSN			CONCORD	1,338.62	318.62	KURRENT-GAINS		
AUSTIN STATION	1,682.00	656.72	EG. MT ZION, TRINITY	1,578.53	318.62	KURRENT-GAINS ASSN		
BAUGH CHAPEL	1,804.50	1,034.50	HAGARVILLE	1,198.63	304.67	BIGGERS	2,546.86	533.79
BJSCOE 1ST	6,026.50	1,443.73	HARTMAN 1ST	12,300.49	6,013.46	BROWN CHAPEL, DIS		
BRUSHLE	2,676.57	1,074.82	FIBLER	2,788.00	1,031.00	CALVARY, CORNING	1,455.55	882.32
CABOT 1ST	47,223.72	13,878.30	LAMAR	2,800.00		COLUMBIA JARRETT	185.73	596.65
CABOT 2ND	383.36	462.23	LAUREL	1,400.78	2,790.47	CORNING	8,261.90	429.67
CANTON	4,600.42	1,982.20	MOUNTAINBURG 1ST	2,788.00	1,769.07	EMMANUEL, PIGGOTT	1,795.54	429.67
CARLISLE 1ST	27,575.94	6,249.20	MULBERRY 1ST	14,003.78	2,790.47	GREENWAY 1ST	1,349.67	957.15
CHAMBERS	75.14		OLGA 1ST	1,428.39	1,571.90	HARMONY	645.30	
CHERRY	1,688.62	168.85	OSZON	332.00		HOLLY ISLAND	1,823.17	1,280.02
COY	3,174.21	1,190.81	SHADY GROVE	945.84	91.00	HOPKELL	1,230.50	483.24
CROSS ROADS			SHIBLEY	847.58	179.93	KNOBBS 1ST, INACTIVE		97.00
DES ARC 1ST	33,196.83	6,539.50	SPARKMAN	2,21.31	1,132.05	MT PLEASANT	347.55	79.72
DEVALLS BLUFF 1ST	3,448.75		TRINITY, ALMA	2,017.00	762.81	NEW HAVENVILLE	1,200.00	1,286.34
ENGLAND 1ST	20,441.27	2,354.14	UNION GROVE	2,233.65	1,064.30	OK GROVE	622.00	715.50
HALEN 1ST	19,336.99	4,359.90	UNIONDALE	4,366.54	37.74	PINE CHURCH 1ST	60.00	112.00
HUNKINS 1ST	130.73		VAN BUREN 1ST	34,923.26	10,164.30	PIGGOTT 1ST	31,586.57	8,637.09
IMMANUEL, CARLISLE	3,472.51	1,276.22	VAN BUREN 2ND	736.37	277.21	POCAHONTAS 1ST	14,609.24	5,266.53
JACKSONVILLE	6,838.39	1,398.63	VINE PRALIE	317.74	1,022.89	RECTOR, ST	10,920.00	4,664.28
LONDRE	20,678.18	5,013.44	WEBB CITY	2,799.15	3,300.66	REYNOLD 1ST	2,873.44	328.50
MT CARMEL	35,108.84	7,163.11	WOODLAND	250.00		SHILOH	2,030.90	98.21
MT SPRINGS	11,991.73	325.00	WOODLAND	20,818.83	8,074.78	SHELTON, CORNING	269.00	
NEW HOPE	300.31	325.00	CLARK CREEK SO BAPT	4,393.82	693.82	ST FRANCIS	3,680.00	1,310.94
OAK GROVE	752.14	654.00	CARB	393.82		SULLY	4,037.98	793.13
OLD UNION	4,006.48	1,136.91	CANTON CREEK	646.00		TIPPERY	3,190.09	1,964.00
PLEASANT HILL	2,135.62	587.00	ASSOCIATION TOTALS	194,336.44	59,909.35	UNION VALLEY	1,042.71	112.11
STEEL BRIDGE	762.14	788.91	CONCORD			WITT'S CHAPEL		
TAYLOR	1,189.70	2,112.97	CONCORD ASSN		25.00	PINE GROVE		
WARD 1ST	7,188.49	1,449.41	SARLING 1ST	4,379.28	658.15	ANTIOCH	34.00	
WATTSMAN	6,694.20	1,455.05	BETHEL	623.63	266.51	ASSOCIATION TOTALS	99,946.95	39,090.75
SOUTH BEND	141.00	112.27	BLODGER	120.00		DARDANELLE-RUSSELLVILLE		
CALVARY, WARD	3,019.20	501.10	BLODGER AVE/ FT SMITH	3781.79	1,353.30	SCRANTON 1ST	3,074.06	837.13
ROBERTSON NEB BAPTIS	825.99	221.35	BONEVILLE 1ST	23,841.07	9,066.43	GARDNER ASSN	6,252.21	1,954.01
ASSOCIATION TOTALS	266,802.78	86,559.09	BRANCH	4,571.37	1,435.10	ATKINS 1ST	504.48	132.00
CENTENNIAL			BURNSVILLE	50.00	50.00	BLUFFVIEW	367.58	11.00
CENTENNIAL ASSN	1,468.00	300.00	CALVARY, FT. SMITH	24,013.08	7,228.80	CENTERVILLE	8,910.67	9,301.67
ABERDEEN 1ST	27,046.41	431.21	CHARLESTON 1ST	11,673.60	4,997.21	DANVILLE 1ST	6,309.01	6,427.09
ALMYRA 1ST	7,500.00	3,965.09	EAST SIDE, FT SMITH	4,979.26	1,976.91	DARDANELLE 1ST	2,030.90	704.47
DEWITT 1ST	1,375.00	8,177.00	ENTERPRISE	888.16	1,976.91	DOVER	5,844.30	3,216.95
GILLET 1ST		425.00	EXCELSIOR	1,056.31	385.72	EAST POINT	1,728.03	1,246.86
HAGLER	80.05		FORT SMITH 1ST 15	231,111.15	119,948.15	FAIR GROVE	644.00	300.00
HIGH MAPLE, STUTTG	80.05		GRAND	3,119.62	436.07	GRACE MEMORIAL	275.00	
REYDOLL	499.20	1,465.90	GLENDALE	311,497.93	66,009.90	HAVANA	1,545.43	2,304.79
SOUTH SIDE, STUTTG	7,991.96	760.61	SOUTH GATE, FT SMITH	444.00	6,500.08	HECTOR	173.09	160.08
ST CHARLES	309.50		GREENWOOD 1ST	34,028.12	279.75	HOPKELL	1,000.00	
STUTTGART 1ST	50,247.41	21,809.41	HACKETT 1ST	1,672.56		IMMANUEL, RUSSELLVIL	2,193.45	496.50
TICHDOR	60.00		HAGERMAN HEIGHTS	172.34.00	6,578.68	KELLEY HEIGHTS	1,552.72	511.00
FAITH	1,910.27	864.72	HIGHWAY 96 1ST			KNOXVILLE	2,811.30	817.00
ASSOCIATION TOTALS	109,820.14	39,548.20	IMMANUEL, FT SMITH	20,675.20	6,478.00	LONDON 1ST	4,080.35	389.00
CENTRAL			JERRY KING 1ST	5,862.28	1,901.44	MOBILE 1ST	258.21	69.00
CENTRAL ASSN			LAWACA 1ST	19,011.44	10,584.25	NEW HOPE	1,677.07	2,075.90
BENTON 1ST	44,540.54	100.00	MAGAZINE 1ST	3,777.61	778.42	OLA 1ST	5,219.65	200.00
NEW HOPE		16,338.68	MEMORIAL			PITTSBURG	100.00	200.00
			MIXON	460.62	78.37			
			MT. HARMONY	318.83	318.83			
			MT. ZION	85.00	369.00			

CHURCHES	COOPERATIVE PROGRAM	DESIGNATED GIFTS	CHURCHES	COOPERATIVE PROGRAM	DESIGNATED GIFTS	CHURCHES	COOPERATIVE PROGRAM	DESIGNATED GIFTS
PLAINVIEW 1ST	1,380.32	1,289.84	STONEWALL-DISBANDED			LAPILE	1,311.80	
PLEASANT VIEW	512.20	91.57	THIRD AVE-PARAGOULD	45.82	149.45	LAWSON	2,143.98	712.24
POTTSVILLE	2,657.20	193.91	UNITY	66.37	813.17	LIBERTY	1,944.40	1,555.29
RIVER	350.33	146.00	VINES CHAPEL	513.80	504.14	LOUISIANA	1,950.35	284.53
RUSSELLVILLE 2ND	33,196.17	4,114.73	WALCOTT	4,197.58	167.00	MAPLE AVE-SMACKOVER	21,008.69	2,059.87
IMMANUEL & DANVILLE	2,147.60	605.00	WEST VIEW	7,376.75	1,961.31	MARRIABLE HILL	3,191.32	2,812.13
CALVARY CHAPEL	75.42					MIDWAY	2,582.00	
IMMANUEL & DANVILLE	1,304.00		ASSOCIATION TOTALS	138,442.00	40,963.18	NEW LONDON		
ASSOCIATION TOTALS	109,913.56	34,714.74	HARMONY			NORPHLET 1ST	32,541.26	8,196.47
			HARMONY ASSN	1,659.81	1,000.00	PARKVIEW	4,956.28	508.01
DELTA			ALTHEA 1ST	2,309.78	318.79	PHILADELPHIA	2,082.00	
DELTA ASSN			ANDERSON CHAPEL	2,980.30		SALEM	4,039.00	2,782.84
ARAYAMA CITY	7,542.10	1,956.83	BETHEL	50.00		SMACKOVER 2ND	47,567.38	15,021.90
AUGUST	2,350.00	757.00	CENTENNIAL	11,917.13	1,318.34	SOUTH SIDE-EL DORADO	4,219.00	2,087.38
BAYVIEW MASON	2,765.01	3,516.90	CENTRAL & PINE BLUFF	7,122.59	891.40	STEPHENS 1ST	26,169.95	3,855.55
BELLAIRE	60.00		DOLLARWAY	5,605.43	727.51	STRONG 1ST	24,162.38	4,778.77
BELLVILLE	802.98	235.00	DUGWAY	369.04	37.20	SULPHUR HILLS	1,637.68	148.19
CHICKASAW	4,749.73	555.50	DUMAS 1ST	31,422.45	9,954.45	TEMPLE & CAMDEN	2,003.25	270.00
COLLINS			EAST SIDE-PINE BLUF	10,325.13	994.27	TEMPLE EL DORADO	19,322.52	11,960.84
DANIEL CHAPEL			EVERGREEN	852.50		UNION	9,728.13	3,137.70
DESERON	28,208.99	10,119.70	FORKREST PARK	14,971.44	7,066.24	URBANA 1ST	1,058.89	1,486.84
EUODRA	18,167.00	4,100.49	GRAND 1ST	3,715.81	1,665.00	VICTORY	4,497.40	519.74
GAINES	342.56	26.00	GRLOY 1ST	475.29	303.00	VILLAGE	3,172.45	1,103.00
GENIE	40.00		GREENLEE	8,884.42	1,398.36	WESSON	2,425.79	1,528.25
KELSO	420.00	251.03	GREEN READDS	14,134.70	5,332.49	WEST SIDE-EL DORADO	29,567.41	1,303.62
KERD	908.82	1,743.33	HARDIN	9,008.04	4,306.47	WHITE CITY	150.00	
LAWRENCE VILLAGE	9,132.03	2,219.99	HICKORY GROVE	14,915.47	913.38	WILDWOOD, DISBANDED		
MARTHUR			HUMPHREY	3,090.78	972.05	ASSOCIATION TOTALS	676,597.58	298,062.33
MCGEEHEE 1ST	36,094.89	7,197.63	IMMANUEL PINE BLUFF	23,216.88	8,775.13	LITTLE RED RIVER		
MONTROSE	3,457.17	821.60	KINGSLAND 1ST	2,354.62	320.00			
NEW HOP	3,297.74	158.72	LEE MEMORIAL	24,092.48	9,424.00			
NORTH SIDE-EUODRA	1,321.77	973.00	LINWOOD	2,137.93	676.21			
OMEGA	180.00		MATTHEWS MEMORIAL	18,626.34	5,048.29	LITTLE RED RIVER ASSN	790.78	779.35
PARADISE	400.00	100.00	MOUNTAIN VIEW STAR CITY	9,048.29	3,948.29	BROWNVILLE		658.60
PARKWAY	495.00	140.00	OAK GROVE	1,457.00		CENTER RIDGE	785.71	405.46
PORTLAND	595.30	3,168.00	CLAUD ROAD CHAPEL	1,371.42	637.88	CONCORD 1ST	2,858.55	855.97
PRINCE	418.97	104.10	PINE BLUF 1ST	72,926.32	25,315.77	HARRIS CHAPEL	187.55	1,170.19
SHILOH	839.90	1,136.33	PINE BLUFF 2ND	10,468.87	5,082.84	HEBER SPRINGS 1ST	56,709.71	11,250.17
SOUTH MCGEEHEE	3,407.26	536.20	PLUM BAYOU	1,077.27	431.00	LIFELINE	141.25	
TEMPLE & GERMOTT	4,439.00	104.10	RANKIN CHAPEL	16.92	74.40	LIME STAR	130.00	313.00
TILLAR 1ST	1,775.48	924.00	RISON	7,911.21	3,416.00	MT OLIVE, DISBANDED		605.00
WATSON	2,808.26	83.56	SHANNON ROAD	1,809.80	805.37	MT. ZION	150.00	75.20
WILKIN	6,624.66	2,700.67	SOUTH SIDE-PINE BLF	3,616.98	641.36	NEW HEBEL	86.44	7.24
WILLET	804.63	200.00	STAR CITY 1ST	32,103.26	3,768.87	PALESTINE	2,169.58	882.21
			WABBEK& INACTIVE	55,251.59	8,578.62	PINES	1,556.97	2,477.00
			WATTS CHAPEL	7,872.00	2,171.05	PLEASANT RIDGE	1,528.52	369.93
			SULPHUR SPRINGS	1,520.00	154.00	PLEASANT VALLEY	859.62	369.93
			YORKTOWN	1,520.00	154.00	POST CAD	144.59	72.20
			RIVER ROAD CHAPEL	1,520.00	447.79	QUITTMAN	3,351.07	2,205.00
			SHEPHERD HILL	5,425.54	1,459.01	SOUTH SIDE-HEBER SPRINGS	4,451.76	2,582.85
			TEMPLE			WESTSIDE 1ST	2,755.47	2,021.03
ASSOCIATION TOTALS	153,663.01	33,795.81				WOODROW		481.67
			ASSOCIATION TOTALS	437,240.95	116,976.89	WYOMING BAPTIST MSSN, IN		
FAULKNER CO ASSN			INDEPENDENCE			ASSOCIATION TOTALS	77,007.05	26,160.78
BERTH	5,444.84	1,453.27	INDEPENDENCE ASSN	44,626.27	9,792.95	LITTLE RIVER		
ONYX	111.30	74.00	BATESVILLE 1ST	27,444.27	7,686.24	LITTLE RIVER ASSN		
ORLEANS	4,786.13	1,447.25	EMMANUEL & BATESVILLE	698.00	735.00	ASHDOWN 1ST	41,727.43	13,777.49
CADRON RIDGE	1,153.90	1,600.88	CALVARY & TIMBO	5,059.02	1,998.00	ASH LONDON 1ST	130.14	190.00
CONWAY 1ST	52,280.96	15,487.25	CARD	5,059.02	1,998.00	BENNING	972.90	1,637.50
CONWAY 2ND	31,578.04	9,459.77	CUMHANN	3,952.87	334.55	BROWNSTOWN	100.00	
EMMANUEL & CONWAY	1,048.01	1,348.00	DESHA 1ST	1,751.52	1,158.03	CENTRAL MINERAL SPG	3,600.00	3,717.04
MT ZION	352.34	74.77	DESHA 2ND	3,676.28	367.28	CHAMPEL HILL	1,100.00	2,205.00
HARLAN PARK	2,695.92	200.96	EASTSIDE CAVE CITY	2,465.10	1,510.73	COLUMBUS	461.17	1,556.05
HAPPY HOLLOW			FLORAL	480.41	280.81	DIERSKS 1ST	3,070.44	298.98
FRIENDSHIP	9,753.70	3,595.43	MARCELLA	496.08	4,800.54	FOREMAN 1ST	3,880.95	1,792.88
HARMONY	2,050.57	430.19	MOUNTAIN VIEW 1ST	1,201.76	994.75	HICKS 1ST	521.28	1,823.35
HIGHLAND	3,301.59	710.54	NORTH SIDE-BATESVILLE	1,974.80	291.94	HORATIO 1ST	4,888.35	3,823.35
FLAYWELLER 1ST	2,650.97	1,110.19	PILGRIMS REST	735.27	1,090.41	KERN HEIGHTS	1,500.00	1,542.30
HT VERNON	2,259.50	609.02	PLEASANT PLAINS	1,248.63	430.66	LIBERTY		
HARDIN			REDBETH	1,713.83	733.62	LOCKESBURG 1ST	5,024.13	696.89
NEW BETHEL	200.00	86.71	ROSE	3,202.76	1,455.75	LONG OAK	226.80	60.00
OAK BOWERY	3,196.36	1,003.95	RUELL HILL	5,815.87	1,119.90	MT MORRIS	1,000.00	1,000.00
PINE GAP	2,935.41	4,803.36	SALADO	2,081.00	2,211.00	MURKESBORO 1ST	4,611.92	3,528.25
PLEASANT GROVE	7,513.00	2,549.28	SALAD	1,212.49	478.26	NASHVILLE 1ST	31,958.99	18,369.26
SOUTH SIDE-DAMASCUS	5,858.34	2,476.60	SHILPUR RIVER	27,077.87	9,970.80	OAK GROVE	1,565.44	577.67
WEDGE 1ST	4,493.52	816.73	SULPHUR RIVER	1,556.00	110.00	OGDEN	1,012.04	947.19
WEDD CREEK			ARBANNA	266.22	24.23	NEWARK, INACTIVE		
SALT LICK HEIGHTS	1,404.45	505.87	NEWARK SOUTHERN	2,860.50	637.80	WEDGEWAY	8,848.50	2,422.33
GREENBRIER FIRST	3,301.76	949.00	FELLOWSHIP	1,285.38		ROCK HILL		100.00
NEW HEBEL BAPTIST CH	47,079.57	5,097.80	GRACE BAPTIST CHAPEL			STATE LINE		200.00
BLANEY HILL MISSION			ASSOCIATION TOTALS	149,542.84	48,964.13	WASHINGTON		330.00
ASSOCIATION TOTALS	173,718.75	51,591.60	LIBERTY			WILTON 1ST	1,959.97	1,200.00
			LIBERTY ASSN			WINTHROP 1ST		
GREENE ASSN	1,000.00		FAIRVIEW ROAD	556.00	1,298.50	LAKESIDE	1,517.12	336.00
ALEXANDER	5,476.17	1,482.35	CALEDONIA	640.00	2,190.00	CROSS ROADS 1ST	1,862.72	101.10
BECH GROVE	262.00	383.22	CALION 1ST	4,701.68	427.10	ASSOCIATION TOTALS	123,663.53	50,170.20
BETHLEHEM STATION			CALION 2ND	8,094.86	28,349.14	MISSISSIPPI COUNTY		
BIG CREEK	140.00	300.00	CAMDEN 1ST	1,011.86		MISSISSIPPI CO ASSN		
BRIGHTON	235.62		CHIDESTER	2,011.43	2,107.06	ARMOREL	6,378.29	2,098.84
BROWN'S CHAPEL	3,239.16	2,051.16	CROSS ROADS 1ST	39,489.77	13,946.45	BETHAN BETHLEVILLE	1,028.71	119.73
CALVARY & PARAGOULD	3,713.75	452.20	EAST MAIN-EL DORADO	27,746.92	6,603.84	BLACKWATER	535.27	53.00
CENTER HILL 1ST	7,818.06	1,743.40	EENEZER	10,906.01	3,785.28	BLYTHEVILLE 1ST	132,821.22	22,848.52
CENTER HILL 2ND	720.00	1,000.00	EL DORADO 1ST	99,159.02	39,159.02	BONKIN CHAPEL	1,100.00	800.00
DELAPLAINE	501.32	504.05	EL DORADO 2ND	58,455.37	19,247.73	BROWN CHAPEL	689.50	281.40
EAST SIDE-PARAGOULD	18,002.99	4,332.47	ELLIOTT	10,222.44	1,701.25	CALVARY-BETHLEVILLE	5,340.31	471.74
FAIRVIEW	201.80	1,999.26	ELPHINSTON	1,483.00	1,483.00	CALVARY-BETHLEVILLE 2ND	4,511.23	1,903.33
FINCH	1,999.26	1,999.26	GALLIEE	1,703.55	941.36	CENTRAL DRESS	2,811.25	2,811.55
FONTAINE	55.00	18.26	GRACE	1,781.70	6,085.97	CLEAR LAKE	4,464.48	480.50
IMMANUEL & PARAGOULD	5,159.26	874.55	HARMONY	6,584.74	2,008.52	COLUMBIA	3,715.22	871.25
LAKE ST & PARAGOULD	1,680.82	20.52	HEBER SPRINGS	4,093.00	2,348.30	CROSSROADS	3,835.12	947.54
LIGHT	1,008.10	900.82	HILLSIDE	72,179.36	39,071.21	DELL	1,934.22	526.00
MANHURD 1ST	8,493.48	1,317.79	HUTTIG 1ST	14,092.82	7,235.72	DELL	1,934.22	526.00
NEW FRIENDSHIP	930.66	859.26	IMMANUEL & BLYTHEVILLE			ETOWAH	86.28	83.60
NEW LIBERTY	420.32	300.00	JUICY CITY 1ST	7,235.72	3,848.00	GOSNELL	10,902.85	1,160.19
NORTH BETHEL	1,080.15	4,222.22	KNDLES	1,560.00				
PARAGOULD 1ST	59,579.12	16,378.61						
PARAGOULD 2ND	8,493.48	1,317.79						
ROBBS CHAPEL	480.00	712.00						
ROBBSWOOD	1,186.50	283.60						
STANFORD	1,508.19	200.00						

CHURCHES	COOPERATIVE PROGRAM	DESIGNATED GIFTS	CHURCHES	COOPERATIVE PROGRAM	DESIGNATED GIFTS	CHURCHES	COOPERATIVE PROGRAM	DESIGNATED GIFTS
JOHNER	1,540.09	569.31	WESTERN GROVE CHAP	462.42	127.10	PINE GROVE	2,700.28	925.94
KEISER 1ST	3,463.94	706.92	SNOWBALL	179.92	20.00	PLAINVIEW	2,000.78	529.36
LEACHVILLE 1ST	14,727.00	2,246.00	LAKELAND	690.00	500.00	PLEASANT GROVE	8,612.95	575.00
LEACHVILLE 2ND	2,262.51	654.96	BEAVER LAKE	413.78	72.87	VULCAN HEIGHTS	1,910.39	18,074.79
LUDKHA 1ST	1,124.94	1,124.94				REYNOL MEMORIAL	2,115.00	782.51
MANILA 1ST	1,122.96	675.90	ASSOCIATION TOTALS	247,340.91	79,465.99	KOLAND	2,155.00	577.15
MARYS CHAPEL	1,300.54	426.55				KOSDAQ	9,480.71	31,770.25
MEMORIAL	985.57	63.00	NORTH PULASKI			SHADY GROVE	2,243.00	1,066.99
NEW HARMONY	154.23					SHANNON HILLS 1ST	3,801.47	734.57
NEW LIBERTY	4,262.54	1,253.29	NORTH PULASKI ASSN			SHERIDAN 1ST	9,161.84	34,399.91
NEW PROVIDENCE	1,118.29	557.19	ANGUY	6,253.47	4,627.65	SOUTH GARDNER	13,400.00	2,428.59
NODEDA	1,072.46	571.13	BARING CROSS	54,531.01	44,209.78	SUNSET LAKE	17,105.19	4,951.60
NUMBER NINE	887.49	624.53	BAYDU METO	17,271.64	3,859.87	TYLER STREET LR	6,228.26	2,951.60
ODYSSEY 1ST	40,133.14	61,124.47	BELLEVILLE	6,311.53	18,004.96	VINT RIDGE MEMORIAL	3,272.87	1,467.00
REGIDGEST	1,976.00	306.00	BETHANY	8,578.04	1,160.12	WAKEFIELD 1ST	2,485.27	782.51
ROSA			CALVARY NLR	3,670.89	7,578.55	WEST SIDE LR	2,425.27	2,477.49
ROSA 1ST-BLYTHEVILLE	15,267.26	3,458.26	CENTRAL NLR	24,698.38	6,978.47	WOODLAND	11,792.86	5,298.32
WARDELL	906.00	220.00	CHAPEL HILL	8,208.22	9,352.13	WOODSON	1,261.23	2,734.11
WESTSIDE MANILA	3,088.76	549.00	CRYSTAL VALLEY	264.30	11,000.39	NICHOLS ROAD	380.00	87.00
WHITTON	13,246.22	2,339.50	FORTY SEVENTH ST	8,158.00	598.51	NEW HAVEN	25.00	416.36
WOODLAND CORNER	788.86	86.92	GRACE	1,732.00	973.50	OTHER CREEK	3,788.60	2,469.25
YARBO	3,497.77	3,489.50	GRAVEL RIDGE 1ST	11,600.39	2,858.44	NEW LIFE	140.00	62.27
FRIENDSHIP	1,826.89	436.00	GRAVES MEMORIAL	4,445.16	1,246.59			
BETHEL	779.61	375.00	HIGHWAY	16,842.20	13,835.96			
			HILLTOP					
ASSOCIATION TOTALS	310,162.30	63,943.35	INDIAN HILLS	26,586.73	416.00	ASSOCIATION TOTALS	1,222,679.65	540,512.66
			INDIANHEAD LAKE	3,367.79	436.50			
MT. Zion			JACKSONVILLE 1ST	30,179.48	91.00	RED RIVER		
			JACKSONVILLE 2ND	19,880.56	3,802.90	MALVERN 1ST	19,015.37	8,476.16
MT. ZION ASSN			LEVY	35,298.27	4,800.00	RED RIVER ASSN		
ALGUN	860.29		MARSHALL ROAD 2ND	16,188.37	2,927.24	ANCHOR	1,051.85	304.69
GAY	5,402.67	2,443.25	MORRISON CHAPEL	850.74	105.00	ANTIOCH	1,888.16	273.80
BETHABARA	4,609.63	259.95	NO LITTLE ROCK, 1ST	19,800.00	803.31	ARDELFPHIA 1ST	4,628.74	18,994.36
BRADY PARK	860.00	2,440.00	ODAN	739.71	1,390.00	ARDELFPHIA 2ND	10,785.04	6,010.04
BOND 1ST	89.24	140.24	PIKE HILL	130,244.25	4,965.90	BEECH STREET-GURDON	25,439.53	9,844.76
BOWMAN	5,119.88	1,108.37	PIKE AVENUE NLR	18,507.29	6,933.46	BEHREN 1ST	1,846.11	600.00
BROOKLAND	1,359.12	263.44	REHNOUD	6,274.00	1,550.00	BETHLEHEM	733.00	162.50
BUFFALO CHAPEL	280.26		RUNYAN 1ST	6,524.27	5,623.47	BETHLEHEM		
CARAWAY	4,199.57	1,519.46	SHERWOOD	1,113.85	5,623.47	BRIGHTON INACTIVE	74.32	
CASH 1ST	4,076.67	355.00	SIXTEENTH ST. NLR	2,480.79	188.00	CADDO VALLEY	1,235.08	850.00
CHILDRESS JONESBORO	67,508.81	11,293.34	STANLEY	4,000.00	1,000.00	CEDAR GROVE	1,633.08	378.72
DURKEE	506.04	308.90	SYLVAN HILLS 1ST	20,434.72	14,615.09	CENTER POINT	930.00	
ELBERT	195.00		ZION HILL	8,237.73	3,129.76	CURTIS	3,310.17	402.34
Egypt	158.40	212.09	MILITARY ROAD CHURCH	3,408.03	1,808.45	DEGRAY	1,970.00	1,188.12
FISHER ST-JONESBORO	10,994.75	7,809.42	MAUELLE	8,255.92	5,594.27	EAST LEBANON		
FRIENDLY HOPE	2,291.69	1,761.25	GETTSHEMAN	6,655.00	2,112.00	EMMET 1ST	1,265.24	288.58
JONESBORO 1ST	4,945.01	28,202.55	UNITY	2,800.06	85.00	FAIRVIEW/ DISBANED	685.00	552.31
LAKE CITY 1ST	7,870.08	1,990.49				HARMON HILL		
LUMSFORD	1,320.05	225.00	ASSOCIATION TOTALS	629,800.07	232,950.86	HOLLYWOOD		
MCKEITHEN	1,044.45	1,701.44	QUACHITA			LAKETOWN	4,412.00	431.27
MT. PISCAG	1,044.65	396.57	QUACHITA ASSN			MARION	1,440.00	
MT. ZION	6,033.90	1,259.75	ACORN	151.72		MT BELLEVILLE	803.65	76.00
NEEDHAM	2,282.26	630.92	BETHEL	509.04		MT OZARK	1,300.38	
NETLETON	27,892.46	1,702.00	DORADO CAMP	7,716.41	380.60	OKLONA	1,055.50	
NEW ANTOCH	3,344.38	578.55	CALVARY, MENA	810.09	136.00	PARK HILL	10,306.46	4,218.37
NEW HOPE BLACK DAK	1,308.47	348.64	CHEERY HILL	439.88	231.37	PRESCOTT 1ST	12,558.58	5,996.33
NEW HOPE, JONESBORO	332.14	82.00	CONCORD	809.29	29.00	READER 1ST	1,200.00	
NORTH MAIN, JONESBORO	6,133.79	1,382.22	COVE 1ST	843.76	37.25	REKWOODS	10,510.06	1,133.55
ORTHADRIA 1ST	10,810.66	2,224.72	DALLAS AVENUE, MENA	9,975.15	2,661.74	SHADY GROVE	140.00	
PROVIDENCE	981.91	195.80	DEQUEEN 1ST	33,129.41	12,198.41	SHILOH	2,484.29	1,319.13
ROME'S CHAPEL	779.98	55.00	GILGAM	2,991.28	457.50	SOUTH FORK	2,841.29	90.00
ROSE OAK	2,273.56	732.86	GILMAN	1,279.05	546.30	SYCAMORE GROVE	2,489.27	100.00
UNIVERSITY	2,273.56	732.86	GRANNIS	7,749.01	1,576.25	THIRD ST-ARDELFPHIA	3,853.59	59.00
WALNUT ST-JONESBORO	22,308.70	5,531.76	HARTON 1ST	1,472.40	1,078.25	UNITY	985.36	1,575.00
WHEATLE	1,147.30	49.14	HATTON	116.64	20.00	WHELLEN SPRINGS	308.80	
WOODSPRINGS			LOWER BIG FORK	38,781.80	14,362.69	SOUTHIDE, PRESCOTT	30.00	
			MENA 1ST	582.01	56.35			
ASSOCIATION TOTALS	272,956.33	80,806.72	NEW HOPE	540.48	480.00	ASSOCIATION TOTALS	164,513.35	67,156.11
			NEW HOPE	480.00				
NORTH ARKANSAS			TWO HOLE	2,460.53	568.73	ROCKY BAYOU		
BLUE EYE	4,690.30	1,886.79	WANDERVOORT 1ST	1,946.71	1,189.03	FAITH, BATESVILLE		
EUREKA SPRINGS 1ST	3,784.44	1,978.50	WICKES 1ST	1,349.16	150.00	SALEM 1ST	4,951.34	1,128.84
NEAR ARKANSAS ASSN		80.00	YOCANA			SHEROKEE VILLAGE	4,797.44	3,452.11
ALFEN	4,705.25	3,159.33				SAGINAW	251.88	26.91
BATAVIA	1,184.42	1,219.77	ASSOCIATION TOTALS	109,997.50	35,832.62	ROCKY-BAYOU ASSN		
BRADY CREEK SPRINGS	2,818.39	610.23	PULASKI COUNTY			ASH FLET	1,145.97	547.74
BREKENTON	2,818.39	610.23				BEHRENS	373.00	
BRYRVILLE 1ST	26,740.48	4,703.62	BRYANT 1ST SOUTHERN	29,172.81	4,908.46	GOSWELL	35.00	90.00
BOLEY	3,086.19	1,329.09	INJAN SPRINGS	6,203.00	3,371.04	CALICO ROCK 1ST	2,841.00	157.25
BUCKINGTON	1,702.22	543.21	PULASKI CO ASSN		74.85	DOLPH	1,608.41	222.15
CASSVILLE	683.00	750.00	ARCHVIEW	8,412.03	3,188.85	EVENING SHADE 1ST	1,385.62	1,593.31
DEER	757.41	305.80	PARKWAY PLACE	14,047.77	4,050.83	FINLEY CREEK	600.00	63.00
EAGLE HEIGHTS	304.00	889.20	BARNETT MEMORIAL	4,131.06	1,089.21	FRANKLIN	499.11	150.00
ELMWOOD	1,026.03	599.12	BINGHAM ROAD	4,131.06	1,089.21	GUIN		
EMMAPLE, HARRISON	1,099.61	1,276.69	BROOKWOOD 1ST	5,256.72	604.48	HARDY 1ST	7,343.83	3,185.84
EVERTON	1,026.03	1,276.69	CALVARY LITTLE ROCK	8,256.89	56.00	MELROSEBURNE 1ST	5,888.00	1,600.55
FREEMAN HEIGHTS	9,281.14	1,346.70	CROSSROAD	2,113.03	536.80	MYRON	924.86	100.00
GATHER	341.22	192.00	CRIST 1ST	12,039.53	2,113.03	OXFORD	171.76	24.83
GRANDVIEW 1ST	2,228.40	1,228.22	DUGGASVILLE 1ST	4,262.03	239.00	SAGE	2,489.27	1,274.25
GREEN FOREST 1ST	9,002.35	1,882.40	EAST END HENSLEY	9,820.82	3,003.27	SOUTHIDE	2,846.00	1,274.25
GROUB SPRINGS	751.30	354.32	FURST HIGHLANDS	28,378.02	715.56	SYLAMORE 1ST	1,053.49	450.00
HOPEWELL	66,599.98	18,635.76	FOREST TOWER	1,378.02	176.50	WESLEYAN	833.00	722.15
JASPER 1ST	4,760.67	1,395.00	GARDEN MEMORIAL	464.25	186.00	YON HILL	934.22	900.00
LEAD HILL 1ST	2,153.30	2,682.42	GARDEN MEMORIAL	464.25	186.00	HURSHBEND BOND	3,361.73	1,375.97
MARSHALL 1ST	4,082.43	1,739.56	GREEN HIGHLANDS 1ST	10,160.67	4,468.70	LEBANON	4,365.54	491.07
NEW HOPE	1,229.48	393.00	GREEN MEMORIAL	8,623.89	2,572.90	MT PLEASANT SU	101.71	100.00
NORTHVILLE	16,972.54	5,528.67	HERBON	1,080.21	791.74	NORTHSIDE BAPTIST C	561.88	226.00
OSAMA	1,886.40	1,886.40	HOLLY SPRINGS	1,886.40	1,886.40			
OREGON FLAT	4,871.53	819.90	IMMANUEL LR	313,057.75	237,619.57			
PARSONS	1,886.40	2,028.05	IRONTON	5,602.79	1,466.35	ASSOCIATION TOTALS	46,432.75	20,233.29
RCA SPRINGS	1,886.40	851.15	LAKESIDE DRIVE	16,299.20	1,466.35			
RUDOLPH	1,044.14	851.15	LIFE LINE	51,290.20	3,106.24	SOUTHWEST ARKANSAS		
ST. JOE 1ST	450.00	90.00	LITTLE ROCK 1ST	122,944.88	70,018.12			
SOUTH SIDE-LEAD HILL	802.92	1,056.48	LITTLE ROCK 2ND	37,808.00	10,218.41	ROSE HILL INACTIVE		
TRINITY	415.10	119.54	MARSHAM STREET LR	26,758.17	10,218.41	SOUTHWEST ASSN		
UNION	6,224.90	3,511.50	MARSHALL	19,098.64	4,327.33	ANDERSON	1,465.41	720.45
VALLEY SPRINGS	8,821.48	5,232.58	HALLS MEMORIAL	5,232.58	5,232.58	ARABELL HEIGHTS	4,326.80	2,140.67
WAGLAND HEIGHTS	16,731.36	2,974.86	NATURAL STEPS	6,167.34	4,074.37	BEECH STREET 1ST	20,883.39	2,140.67
WABLE FALLS	312.05	248.19	NORTH POINT	390.00	100.00	BRADLEY	3,956.37	3,052.60
			OLIVET	35,307.72	12,002.97	WINDY HEIGHTS	1,164.71	281.30

CHURCHES	COOPERATIVE PROGRAM	DESIGNATED GIFTS	CHURCHES	COOPERATIVE PROGRAM	DESIGNATED GIFTS	CHURCHES	COOPERATIVE PROGRAM	DESIGNATED GIFTS
CALVARY HOPE	18,910.03	5,044.13	PLEASANT GROVE	10,400.48	117.75	SILENT GROVE	1,505.27	307.20
CALVARY, TEXARKANA	13,492.56	3,546.39	PLEASANT HILL	1,476.00	150.00	SONORA	2,007.89	2,408.92
CANFIELD	2,088.46	1,133.11	PLEASANT VALLEY	1,885.40	823.05	SOUTHSIDE-FAYETTEVILLE	481.86	141.90
CENTRAL MAGNOLIA	92,097.37	91,114.50	PROVIDENCE		216.15	SPRINGDALE 1ST	85,584.56	63,006.95
FOUR FIST	7,617.01	1,114.50	RED OAK	600.30		SPRING VALLEY		
FULTON	3,835.00	290.00	RIVERVALE	1,485.27		SULPHUR CITY	1,600.50	958.26
GARLAND	165.00		ROCKY MOUNT	45.00	52.55	UNIVERSITY-FAYETTEVILLE	19,580.00	27,842.38
GENOA 1ST	2,563.32	593.00	TRUMAN 1ST	2,945.30	131.29	WEST FERRIS	1,600.00	3,116.29
GURNEYS	339.28	824.00	TYRONZA 1ST	5,858.48	816.85	WINSLOW 1ST	3,081.00	1,176.00
HALLEY LAKE	34,052.82	250.00	TYRONZA VIEW	585.89	314.58	SANG AVENUE	1,027.44	4,098.89
HARDING GROVE	50.00		VALHALL 1ST	1,792.10	216.55	NORTHEAST SOU HSN	963.22	921.20
HICKORY ST-TEXARKANA	309.14		WEST RIDGE			WEDDINGTON WOODS FIR	167.03	60.50
HIGHLAND HILLS	3,777.71	1,254.82	SHILOH	500.00				
HORN 1ST	54,006.57	19,006.57	MALDENBURG	180.79	21.53			
IMMANUEL MAGNOLIA	1,959.51	31.00	CENTRAL BAPTIST CHU	2,436.70	375.60	ASSOCIATION TOTALS	282,417.26	171,100.61
IMMANUEL, TEXARKANA	11,512.99	11,393.53				WHITE RIVER		
LEWISVILLE 1ST	10,152.78	2,211.00	ASSOCIATION TOTALS	100,438.37	17,355.88			
MACEDONIA 1ST	785.84		NORTH CENTRAL ASSOCIATION					
MACEDONIA 2ND	1,000.00	938.00	CLINTON 1ST	9,788.00	4,047.10	MORNING STAR	520.00	
MADEWELL	1,130.13	75.77	MALDEN	65.00		WHITE RIVER ASSN		
MEMORIAL	6,795.77	3,299.50	MALDEN	65.00		ARKANA	936.94	400.00
MICHELLE ST-TEXARKANA	100.00	20.00	MALDEN	32.35		BRUNO	1,171.97	190.40
MT. ZION	390.00	400.00	IMMANUEL & CLINTON	305.89	65.00	BULL SHOALS 1ST	3,924.89	1,213.63
NORTH EAST-TEXARKANA	3,482.56	682.00	LESLIE 1ST	6,841.04	1,667.70	COTTER 1ST	431.21	2,083.23
PINEY GROVE	1,348.61	748.58	NEW HOPEWELL	224.83		EASTSIDE WTH HDRE	10,718.97	2,273.47
PISGAH	401.20	109.20	NORTH CENTRAL ASSN			FURFUR 1ST	9,538.48	3,093.30
RED RIVER	105.00		BEE BRANCH	749.63	736.05	GASSVILLE	8,671.90	2,878.17
ROCKY MOUNT	1,005.40	78.00	BOTKINBURG	150.00	279.50	HENDERSON 1ST	2,777.57	596.43
SHILOH MEMORIAL	9,027.76	1,302.26	BOTKINBURG	150.00	279.50	HOPKINELL	1,234.87	202.82
SHILOH TEXARKANA	1,008.42	50.00	FORNOSA	2,621.56	436.00	LONG ROCK	171.25	15.42
SPRINGMILL	1,008.42		FRIENDSHIP	4,810.56	2,908.25	MIDWAY	2,459.54	736.25
STAMPS 1ST	18,351.97	7,145.13	LENGHTON	749.44		MOUNTAIN HOME 1ST	63,106.26	26,780.31
STAMPS 2ND	3,935.51	206.58	P. DEE	984.00	304.55	NEW HOPE	1,294.82	396.95
TENNESSEE	2,431.92	669.14	PLANT			NORFORK 1ST	1,575.00	
TRINITY TEXARKANA	37,123.71	3,500.00	PLEASANT VALLEY	539.23	203.68	OAK GROVE INACTIVE		
TRINITY TEXARKANA	98,771.00	206.58	RUPERT	1,150.19	880.88	PILGRIMS REST	540.00	400.00
FAITH TEXARKANA	3,878.88	379.56	SCOTLAND	1,262.98	642.07	PIYATT	1,852.84	436.28
FALCON 1ST BAPT CHU	197.51		SHADY GROVE	1,174.16		REA VALLEY	663.03	
MCEIL SECOND BAPT	1,549.50		SHIRLEY	1,813.12	337.86	SUMMIT	837.56	405.79
			BURNT RIDGE	130.00	609.00	TOMAHAWK	505.57	132.08
			ZION			WHITEVILLE	1,158.00	608.86
			FAIRFIELD BAY	8,853.34	3,007.39	YELLEVILLE	8,436.23	2,888.87
						BIG FLAT MISSION	309.81	181.37
						HILL TOP	720.07	565.80
						PEEL	1,028.08	286.17
						EAST OAKLAND	200.00	40.00
ASSOCIATION TOTALS	401,060.55	139,289.14	ASSOCIATION TOTALS	41,575.32	15,324.85	ASSOCIATION TOTALS	125,728.92	46,644.98
			WASHINGTON-MADISON	4,550.08	1,903.82	GARLAND COUNTY		
LEASANT HILL	633.24	734.72	BLACK OAK	720.00	700.00	CEDAR GLADES		2,644.67
TRINITY COUNTY ASSN		75.00	BRUSH CREEK	1,373.12	1,573.10	ANTIUCH		840.00
ANTIUCH	180.00	734.72	CALVARY, HUNTSVILLE	1,675.57	420.00	EMMANUEL-HOT SPRING	2,701.63	609.43
BARTON CHAPEL	1,200.85	75.00	CAUDLE AVE. SPOGDALE	3,475.55	1,800.59	FAIRDALE	1,990.67	1,181.75
BECKSPUR	2,135.10	237.00	COMO	1,000.00	100.00	GRAND AVE. HD SPGS	15,717.71	1,957.00
BURNT CANY			ELKINS	240.00	80.00	HARVEYS CHAPEL	7,162.25	2,498.05
CALVARY W-MEMPHIS	17,995.23	4,518.08	ELKINS 1ST	1,425.62	80.00	JESSIEVILLE	6,018.39	1,210.33
CORRY VALLEY	4,518.08	325.91	FARMINGTON 1ST	3,572.76	746.80	MOUNTAIN PINE 1ST	6,159.64	1,029.12
COLT	455.00	1,032.00	FAYETTEVILLE 1ST	55,810.92	32,363.98	MOUNTAIN VALLEY	886.75	96.25
CRAWFORDSVILLE 1ST	4,348.57	460.20	GOLD AVE	205.00	205.00	PARK PLACE	33,240.00	6,743.80
EARLE	22,297.78	7,995.76	FRIENDSHIP	363.18	20.60	RECTOR HEIGHTS	305,405.49	515.39
EMMANUEL-FOR CITY	3,724.44	996.02	GREENLAND 1ST	140.80	233.00	VISTA HEIGHTS	924.11	282.13
FALL OAKS	3,951.46	996.02	HENRIELLE	2,603.30	182.50	GARLAND COUNTY ASSN	586.06	120.00
FAITH	595.00		HUNTSVILLE 1ST	4,454.38	383.00	EMPAUS		
FERRIS 1ST	1,817.45	757.65	IMMANUEL-FAYETTEVILLE	8,649.40	2,037.72			
FERRIS 2ND	24,125.00	14,494.38	JOHNSON	1,426.35	622.20			
FERRIS CITY 2ND	4,242.54	384.23	LINCOLN 1ST SOU	1,813.78	1,800.00			
GLADDA	1,118.44	200.31	LIBERTY	3,143.27	1,021.82			
GODDIN	1,233.44		LINCOLN 1ST	8,075.62	1,928.74			
HARRIS CHAPEL	1,224.00		NEW HOPE INACTIVE					
HICKMAK	698.56		OAK GROVE	1,979.82	3,291.35	MISCELLANEOUS	100.00	38,589.50
INGRAM BOULEVARD	9,905.81	2,702.69	PRAIRIE GROVE 1ST	9,144.12	99.00			
MADISON 1ST	605.00	573.70	PROVIDENCE	1,399.21	3,223.77			
MADISON 2ND	17,520.58	2,987.20	RIDGEVIEW					
MIDWAY	1,716.98		ROLLING HILLS	3,370.96	1,465.00			
PALESTINE	496.09	391.40						
PARKIN 1ST	6,335.27	5,408.39						
PINE TREE	957.83	424.59						
SHILL LAKE	300.00	16.32						
TILTON	50.00							
TODD	1,296.08	389.00						
TURRELL	1,997.37	347.00						
UNION AVENUE, WYNN	15,378.78	435.00						
VANDALE	580.00	691.48						
WEST MEMPHIS 1ST	15,530.32	32,944.81						
WEST MEMPHIS 2ND	8,154.67	1,870.65						
WYNN	1,375.00	3,590.23						
WYNER	48,207.82	16,062.21						
EAST BAPTIST CHURCH								
LAKESHORE	180.00	678.57						
IMMANUEL	1,870.06	360.00						
LIBERTY DISBANDED								
WOOD HOP	311.99							
ASSOCIATION TOTALS	367,554.94	102,453.31						
TRINITY								
CALVARY, LEASANT	750.92	76.54						
TRINITY ASSN								
ANDERSON TULLY	329.16	354.43						
BETHEL								
BLACK OAK	318.00	829.98						
CALVARY, HARRISBURG	3,112.29	663.94						
CORNERS CHAPEL	2,510.30	405.18						
ESKIDDE, TRUMANN	580.00	40.00						
FAITH	50.00	10.00						
FISHER 1ST	2,714.23	1,581.00						
FISHER 2ND	772.45	54.45						
GREENFIELD	2,074.01	580.42						
HARRISBURG 1ST	4,076.28	1,626.00						
LEASANT	1,178.44	196.00						
LEPANTO 1ST	9,032.21	1,484.58						
MAPLE GROVE	432.19	306.43						
MARRED TREE 1ST	7,694.08	1,548.65						
MCCORMICK	95.00	25.00						
NEAL'S CHAPEL	233.65							
NEISWANDER	145.00	350.00						

School attendance law stands court scrutiny

WASHINGTON (BP)—A Pentecostal North Carolina couple lost a final legal bid to educate their children at home when the U.S. Supreme Court refused to review a lower federal court decision upholding the state's compulsory school attendance law.

Peter and Carol Duro moved to Tyrrell County, N.C., in 1981 but refused to enroll their five school-age children in either public or private schools on grounds they did not want them exposed to secular humanism or "unisex" habits. Because of their belief in faith healing, they also objected to the schools' practice of providing medical care for injured or sick children.

Within a month of their moving to North Carolina, warrants were issued charging the Duros with violating the compulsory attendance law, but for technical reasons were

thrown out of court.

But supported by the North Carolina Civil Liberties Union, the Duros then filed suit in federal district court against the district attorney who had issued the warrants, charging him with infringing on their free exercise of religion. U.S. District Judge F.T. Dupree Jr. ruled a year and a half later for the parents.

But the Fourth Circuit Court of Appeals, based in Richmond, Va., overruled Judge Dupree, holding North Carolina "has demonstrated an interest in compulsory education which is of sufficient magnitude to override the religious interest" claimed by the Duros (83-719, Duro v. District Attorney, Second Judicial District of North Carolina).

Your state convention at work

Sunday School

Dreams do come true

At a recent staff retreat, the Sunday School department set goals in several areas of Sunday School work. Most of the goals related to plans for 1985, but one goal relates to 1984 and 1985.



Pike

That is less than one per church.

However, let me share another figure. Last year, the total Sunday School leadership diplomas earned was 23. You see what a giant step we have ahead. No other state convention has ever shown an increase of this magnitude.

Why so large a goal? We claimed the truth of Ephesians 3:20 in setting this dream. "... unto him that is able to do exceeding abundantly above all that we ask or think..." We did not want to set any goal that we could reach in our own power. Except that God steps in to intervene to impress hundreds of workers of the need to train, we cannot achieve our dream.

But, we do believe God will speak (perhaps through persons like you) and this dream will come true. Information on diplomas is in the Church Study Course catalog or write to me and I will send material to you. Will you dream this dream for your church? Dreams do come true! — Freddie Pike, director

Family and Child Care Services

Channels of blessing

Make Me a Channel of Blessings is a favorite hymn of mine. A channel is a "conduit through which anything passes." God's blessings are showered upon us and we share these blessings with others. We become a channel of blessings.

This thought was expressed so well in a letter which I received with a gift to our child care ministry. "The Lord has been so good to us, and we wish to share with you and the good work you do with the less fortunate. May the Lord continue to use all of you, and I hope this money can be of help."

In 1983, direct gifts to our agency through the churches totaled \$375,289.15 from 1,060 of our 1,266 churches. That represents a 9.6 percent increase over the previous year.

We are grateful for the contributions from each church.

Listed below are the top 10 churches in direct gifts for 1983: (1) El Dorado First, \$8,084.50, Liberty Association; (2) Pine Bluff First, \$7,870.34, Harmony; (3) Harrison First, \$7,130., North Arkansas; (4) Wildwood, \$5,000., Liberty; (5) Geyer Springs First, \$4,283.05, Pulaski County; (6) Grand Avenue, \$4,220.52, Concord; (7) Sparkman First, \$3,703. Carey; (8) Russellville First \$3,653., no association; (9) Immanuel First \$3,550.33, Pulaski County; and (10) Paragould First, \$3,490.19, Greene County (See page seven for full report). — Johnny G. Biggs, executive director

Evangelism

Baptism's importance

Jesus said the church is to baptize in the name of the Father, and of the Son, and of the Holy Spirit. Christ is saying that as people are saved, they are to be marked in baptism. Every born again believer should be obedient to Christ in baptism. Each saved person should follow the example of Jesus. At the baptism of Christ, the trinity was present. The Spirit, in the form of a dove, lighted upon



Shell

Christ, the Son. God spoke from heaven. "This is my beloved Son in whom I am well pleased." We are persuaded that God is pleased every time one of his children is obedient to Him.

Each born again believer through baptism gives an outward expression of that inward experience. Each child of God is to identify with Christ and his church. Acts 2:41 states, "They that gladly received the word were baptized...there were added unto them about three thousand souls". We cannot be satisfied in evangelism until every saved person follows Christ in baptism.

Jesus said that we are to teach them to observe all things. He had a deep desire and so must we to mature every believer in Christ. We have a wonderful opportunity through our Sunday School to teach the great truths of Christ. Paul told Timothy (II Tim. 2:15) "Study to show thyself approved unto God, a workman that needeth not to be ashamed, rightly dividing the word of truth". — Clarence Shell, director

QUILTY VAN SALES

Used 12 and 15-passenger vans, special prices to churches, (501) 268-4490, 1500 E. Race, Searcy, Ark. 72143. Larry Carson, Butch Copeland.

Christian Life Council

Booing somebodies

Reggie Jackson once remarked, "Fans don't boo nobodies." Any one doing something is likely to be criticized.

"Be hanged if you do and hanged if you don't" are words probably out of the Old West, but there's much truth in them. No one can please everybody! The Christian must give primary emphasis to pleasing God. George W. Truett often said, "To know the will of God

is the greatest knowledge! To find the will of God is life's greatest discovery! To do the will of God is life's greatest achievement!"

Achievers are often booed, but thank God for those who continue to play ball despite the reaction of the crowd. When the going gets tough, the tough get going! Above all, a Christian's life must witness by word and example to the amazing grace and love of Jesus Christ. Those bearing such witness are bound to be criticized, but no one can be a somebody for God, otherwise. "I can do all things through Christ who strengthens me" (Phil. 4:13). — Bob Parker, director



Parker



PRICES
START AT
\$2.25
Made in
USA

**CUSTOM
IMPRINTED
T-SHIRTS**
OR JERSEYS
FOR YOUR
CHURCH - YOUTH GROUP - CAMP
Top Quality: 50% cotton/50% polyester

SPORTS WAREHOUSE
(501) 268-9895
809 E. Race - Searcy, AR 72143

The Preaching and Teaching Ministry of Dr. Bill Probasco
Conferences, revivals, tapes, pulpit guest, seminars, books, Bible Study materials, catalog available on request.

Church Ministry Resources
P. O. Box 1506
Conway, AR 72032
Phone (501) 329-9820

International

The servant of the Lord

by Wm. M. Burnett, Beebe

Basic passage: Isaiah 42:1-4; 49:1-6; 52:13-53:12

Focal passage: Isaiah 42:1-4; 49:5-6; 53:4-6

Central truth: The servant of Isaiah's prophecy is Jesus Christ our Lord.

He is first presented (Isa. 42:1-4) as the chosen one in whom the Father delights, and upon whom the Spirit rests. You will remember of course that at Jesus' baptism God the Father accredited him and expressed his pleasure in him.

Also, the Holy Spirit came in the likeness of a dove and lighted upon him (Matt. 3:16-17). He is declared to be the one who will bring true religion to the gentiles, the true rule of God to all the earth.

His method for doing these wonderful things will be gentle and kind and thoughtful. Matthew quotes from this first passage (Isa. 42:2,3) "He shall not strive, nor cry; neither shall any man hear his voice in the streets. A bruised reed shall he not break, and smoking flax shall he not quench".

In the second passage he is presented as Israel's deliverer (Isa. 49:5,6). John, in speaking of Christ's mission to Israel says, "As many as received him to them gave he power to become the sons of God" (John 1:12). He refers to Isaiah 49:6 in John 11:52 and Paul quotes Isaiah describing Jesus as Israel's deliverer (Rom. 11:26).

In the third and last passage the suffering servant is unmistakably Jesus our Lord (Isa. 53:4-6). He bears our grief even though we despise and reject him. The Lord lays the iniquity of us all on him.

That Jesus extends the offer of salvation to all, both Jew and gentile, is an obvious teaching of these scriptures. It is also clear that the victory of our Lord over sin and evil will one day be complete.

Perhaps the most important practical message for his people is that we have the privilege and obligation to demonstrate in life the peace and healing that are ours through faith in his shed blood.

To be able to reflect the true life of God as we live our faith in Jesus Christ is to use the only effective weapon against the evil and confusion of this world.

This lesson treatment is based on the International Bible Lesson for Christian Teaching, Uniform Series, Copyright International Council of Education, Used by permission.

BUS TOUR

WASHINGTON D. C. Cherry Blossom

April 6-16, 1984

Attend: Grand Ole Opry,

Baptist Fundamentalism, Mt. Vernon, etc

For free brochure contact:

Ralphs Travel Club, P. O. Box 914, North

Little Rock 72115, Phone (501)753-8280

Life and Work

Walking together

by Joe A. Thompson, pastor, Calvary Church, Blytheville

Basic passage: Mark 9:33-41

Focal passage: Mark 9:33-37

Central truth: How to walk together in greatness.

To place this passage in its proper perspective one must keep in mind that this chapter began with the transfiguration. This was the beginning of the end for Jesus and his ministry. He no longer spoke in parables but in plain unmistakable language: "...The Son of Man will be handed over to men who will kill him..." (Mark 9:31b).

Nothing so graphically shows how far the disciples were from understanding Jesus and his messiahship than this incident. He had told them repeatedly what was going to happen, and yet, they persisted in thinking in terms of earthly power. The disciples invoked themselves as his heads of state.

There is something heartbreaking in the thought of Jesus going to his cross and his disciples arguing over positions. They are like children standing around the death-bed of a loving, caring father arguing over who will get what when the old man dies. Heartbreaking!

Let's we become to severe in our condemnation of the disciples, we need to take a good long look at ourselves and the churches of God. Aren't we still squabbling over who is the greatest, over who has the power, and over who gets what done for them. Shameful! Two thousand years later and we have not learned how to walk together in greatness.

Jesus Christ dealt with this concern in a serious manner. He sat down and called the twelve to him. When a rabbi was going to make an important announcement he always sat to do his teaching and make his point. Jesus also took this position because of the seriousness of his subject.

Jesus said to the disciples that if you really want to find greatness then you must find it in being last, not first; in being servants, not masters. He was right. The really great men, the men who are remembered, were all men who said to themselves: "Not what can I get for self but what can I do for others." If you would be great then search out those who can do nothing for you, but who need desperately what you can do for them.

This lesson is based on the Life and Work Curriculum for Southern Baptist Churches, copyright by the Sunday School Board of the Southern Baptist Convention. All rights reserved. Used by permission.

Bible Book Study

Judah and Israel

by H. E. Williams, president emeritus, Southern Baptist College, Walnut Ridge

Background passage: II Kings 14:23 to 16:20; II Chronicles 26:3 to 28:27

Focal passage: II Kings 14:23; 2:4-7, 8

Central passage: Israel and Judah fell into decline because of moral degeneracy.

Probably one of the greatest lessons mankind can learn from the history of the Hebrews is the fact that we live in a moral universe and the judgment of God is always being meted out to the disobedient. Even though Israel seemed to occupy a special place in the heart of God, he would not tolerate disobedience.

This period in the history of both Judah and Israel is marked by violence, pagan compromise, and political intrigue which grew out of a tragic lack of commitment to the Lord.

Under Jeroboam II, Israel enjoyed a period of great prosperity, but his reign was marked by evil. He re-established the borders of Israel but did not institute moral and spiritual reforms.

These were hard days for Israel. The prophet Jonah predicted it as a time of expansion and bitter affliction for Israel, who would find herself friendless among the family of nations. This situation may have been a major cause of her being willing to compromise her dignity by allying with Assyria.

Despite the sins of the nation of Israel and her friendless plight, God refused to destroy the nation, not because of what they were at the moment, which might have justified destruction, but because of what they might become in the future. It might be rather interesting if we could know "the mind of God" in dealing with our nation, which is guilty of so many evils, but God seems to spare us for some noble purpose yet to be realized in history.

Judah, often thought of as the more puritanical, when compared with Israel, also had her grave moral problems under the leadership of Ahaz who sinned grievously by practicing the evil worship of Molech, a Canaanite deity which involved a fire ritual of sacrifice of children. Ahaz sacrificed his own son to Molech.

Truly, both nations faced decay and ultimate ruin as a consequence of bad leadership and moral decadence. Great military victory was undermined by immorality. They ultimately fell to the tragedy of the atheism of force and ills related to spiritual malaise.

This lesson treatment is based on the Bible Book Study for Southern Baptist churches, copyright by the Sunday School Board of the Southern Baptist Convention. All rights reserved. Used by permission.

Subscriber Services

The Arkansas Baptist Newsmagazine offers subscription plans at three different rates:

Every Resident Family Plan gives churches a premium rate when they send the Newsmagazine to all their resident households. Resident families are calculated to be at least one-fourth of the church's Sunday School enrollment. Churches who send only to members who request a subscription do not qualify for this lower rate of \$5.40 per year for each subscription.

A Group Plan (formerly called the Club Plan) allows church members to get a better than individual rate when 10 or more of them send their subscriptions together through their church. Subscribers

Are you moving?

Please give us two weeks advance notice. Clip this portion with your old address label, supply new address below and send to Arkansas Baptist Newsmagazine, P. O. Box 552, Little Rock, AR 72003

01 75 80 COMP
DR HAROLD C BENNETT
460 JAMES ROBERTSON PKY
NASHVILLE, TN 37219

Name _____
Street _____
City _____
State _____ Zip _____

through the group plan pay \$6 per year.

Individual subscriptions may be purchased by anyone at the rate of \$6.36 per year. These subscriptions are more costly because they require individual attention for address changes and renewal notices.

Changes of address by individuals may be made using the form above, which appears regularly in this space.

When inquiring about your subscription by mail, please include the address label. Or call us at (501) 376-4791. Be prepared to give us your code line information.



Linkages key to missions strategy

ATLANTA (BP)—Linkages between mainline and new state conventions are essential to achieving Southern Baptists' Bold Mission Thrust goals. That's the consensus of state convention and Home Mission Board leaders who coordinate and nurture the voluntary linkups.

Matching the resources of established conventions with the needs of new conventions is an idea which began percolating in the mid-1950s when Southern Baptists ventured into pioneer areas. It gathered steam in 1982 when state executive directors took another look at such alliances as a way to accelerate new work growth, explained David Bunch, the HMB's Mission Service Corps director.

A pipeline of money, volunteers and know-how connects 13 established conventions with 12 young conventions or fellowships: Arkansas with Indiana; Alabama with Wyoming; Florida with Pennsylvania/South Jersey; Georgia with New York; Kentucky with Ohio; Louisiana with Nevada; Missouri with Iowa; North Carolina with West Virginia; South Carolina with Puerto Rico; Tennessee with Michigan; Texas with Minnesota/Wisconsin; Virginia and Maryland with New England.

Because no two conventions are alike, there is no "typical" linkage, noted Gerald Palmer, HMB vice president of missions. True to Southern Baptist tradition, the linkages are autonomous, with the cooperating states working out the details of their partnership. "They're not something to be tightly controlled but just encouraged and allowed to develop on their own," Palmer said.

The goal of linkages is neither to clone cookie-cutter state conventions, nor to rush developing fellowships into full-blown convention status. Becoming a convention is a byproduct of linkages, rather than a goal.

"Linkage is an expression of New Testament Christianity," Palmer observed. Though most linkages are forged at the state level between administrators, ownership filters to associations and local churches and, "It really boils down to volunteers," he said.

Long-term personal involvement—the major strength of state linkages—"is what most characterize Bold Mission Thrust if it is really to be bold," Palmer said.

The linkage formed in 1980 between Tennessee and Michigan is one of the strongest, according to Palmer.

Tennessee's 68 associations are divided into clusters, with each cluster linked to one of Michigan's 14 associations. Regular con-

tact is maintained through monthly reports and exchange visits between associational leaders and pastors.

In addition to conducting backyard Bible clubs, concerts and surveys, Tennessee volunteers have donated buses to Michigan churches and provided second-hand cars for students who commute to Michigan from Southern Baptist Theological Seminary in Louisville, Ky.

Robert Wilson, Michigan's executive director, and Carroll Owen, director of Tennessee's convention ministries division, agree starting new churches is a top priority of their partnership. Some Tennessee associations have bought property for new churches, paid for first units or donated salary for mission pastors, Wilson reported. New church starts have advanced "significantly" as a result, he noted, with 47 new missions begun in 1983. Michigan currently has 300 congregations.

For Tennessee Baptists, a byproduct of their participation has been a "fresh spirit and a new missions vision," Owen confirmed. For Michigan Baptists, the linkage formed at a "crucial time, just as we were moving into the recession," Wilson said. "The involvement of Tennessee's people has challenged our own people to deeper commitment."

Palmer described the Home Mission Board's role as counselor and catalyst. "We think linkages are dispelling the idea missions is something the Home Mission Board does all by itself," he said. "Our Baptist people are learning we do more than just send out missionaries—we provide resources for Baptists at every level to do a better job of missions."

As linkages have matured, "they've strengthened awareness of missions needs and increased Baptists' support of missions through regular giving channels," Palmer added. Linkages are also proving to be a "more consistent, planned approach to a task that otherwise tends to be dealt with sporadically," he said.

For Bunch, linkages have demonstrated "a high degree of unselfishness" in both the willingness of older conventions to share their abundance and the willingness of new conventions to accept direction from outsiders. He said, "I think it shows convention leaders operate from a bottom line of wanting to spread the gospel and start new churches, and they're willing to ventilate the system to do it."

