



ORGANIZATIONS

What everyone saw was the end result — a shirt for Wednesdays, a first-place homecoming float, an award-winning publication, and a scholarship raised. But to the member involved the result followed hours of work. Club members worked out details, stuffed paperballs, and made last-minute changes to create that “just right” look.



CELEBRATION. Gamma Phi members cheer on rushes accepting formal bids. — photo by Ken Shaddox

PLEDGING.

Sometimes being involved meant paying a price. A member instructs Howard Vogl, a pledge of the Pershing Rifles; one of the groups that required the initiation process for prospective members. — photo by Ken Shaddox

PHONATHON.

Organizations rarely functioned without interest to Ouachita. Pi Kappa Zeta members Janis Shaddox, Lou Ann Green and Marlan Frias give their support to the Centennial Advancement Campaign phonathon held in January. — photo by Ken Shaddox



Applications, competition, and travel

T

rips made to well known cities included New Orleans, Oklahoma City, Houston, and Dallas and always had a purpose. That purpose, as seen by the academic organizations, was to further students' knowledge in their particular field of interest.

For example, the Debate Club traveled to Springfield, Shreveport, Houston, New Orleans, Oklahoma City, Durant, and Conway, to compete in debate tournaments. With only a small amount of coaching or practice, according to sponsor, Roy Buckelew, they won about half of their debates. Besides debating, some of the members participated in forensic competition such as prose and poetry reading, impromptu speaking, discussion groups, and extemporaneous speaking. In addition to the Debate Club, 16 students were members of the Pi Kappa Delta Speech and Debate Honor Fraternity.

Another traveling club was the Gamma Sigma Epsilon honorary chemistry fraternity. They made several field trips to places like the Blanchard Springs caverns and planned to visit Rice University and attend the national convention in Florida during the spring semester.

At the chemistry society's periodical meetings they dealt with business and had programs. They also had social activities like cookouts and a Christmas party. Membership to this national

EXPLORATORY SURGERY. Cats are dissected as a main project of the Cordate lab students, as shown by Don Simmons and David Mosely. — photo by Tracy Meredith

fraternity was by invitation only to students who had a B average in 12 hours of chemistry.

According to sponsor Dr. Wayne Everett, approximately 15 students were members. One member, Elizabeth Eudy, was the winner of the John F. Conn national award for a scientific research paper she submitted.

Another invitational science organization was the Beta Beta Beta Biological Society sponsored by Ken Sandifer. Students eligible for membership in the fraternity had to have a B average in 12 hours of biology and an overall average of 2.5.

Mr. Sandifer also sponsored the Pre-Dental Club. While the Pre-Dental Club did not make as many trips as some other organizations, they did take five students to the Louisiana State University Dental School in New Orleans. At this time, the students applied for acceptance by the school. The members also visited dental offices to get a first-hand view of office procedures.

The Society of Physics Students made one of their trips to the Klipsch plant in Hope. They also went to Little Rock to hear a Nobel Prize winning physicist. Meetings were held periodically to plan outings and social events cookouts and pizza suppers. The National Society of Physics Students was open to all students interested in Physics. According to sponsor, Clyde Smith, there were about seven members. Within this organization was a national honor fraternity, Sigma Pi Sigma. They planned to induct three students into the honor fraternity during the spring semester.

The Psychology Club helped

undergraduate psychology students get the information they needed for graduate school. Dr. Randy Smith advised this organization.

One project, which they hoped to make a money-raiser in the future, was the Rat Olympics. The rats were trained by students in the Psychology of Learning class. Prizes were awarded for the top three rats.

One new club offered was the Computer Club. Programs scheduled included calling machine language programs from BASIC, programming in FORTH, and sorting and searching techniques. The club was an officially recognized ATARI user's group and members wrote several programs for the club's ATARI 800 system. Bryan Harmon sponsored this club and there were approximately 10 members.

The American Home Economics Association sponsored by Mrs. Ruth Wade was one of the largest academic organizations, with 25 members. Some of their projects included preparing a Christmas dinner, sponsoring a faculty craft show and a homecoming tea for alumni, and hosting the Future Homemakers of America's federation meeting. A new project they hoped to begin was to offer their services to students. They planned to hem, alter and mend clothes, and sew on buttons for a price. The girl would get half of the money and the club the other half.

continued

A RAPPELING PERFORMANCE. During freshmen orientation, members of the Rangers demonstrate rappelling techniques. Capt. Clements, sponsor of Rangers rappels down the side of Lyle. — photo by David Nash





MEMBERS OF ADA ARE: Front row: Dana Donaldson, Vicki Middleton, Sonja Burnett. Second row: Lessie Ann Warrick, Detri McClellan, Joani Crone, Tawnya Neal.



MEMBERS OF AHEA ARE: Front row: Carole Shelton, Cindy Stanford, Jill Grant, Sandra Lowery, Melanie Moore. Second row: Laura Grisham, Mary Beth Minor, Jennifer Williams, Lessie Ann Warriok, Robin Fink, Stacy McCollum. Third row: Stephanie Moore, Lei Malone, Connie Gorum, Clarice Beck, Mrs. Ruth Wade.



MEMBERS OF BLUE KEY ARE: Front row: Paul Au, Steve Swedenburg, Mike Landrum, Kale Magness, Jay Nicholson, Bruce Burnett, Taylor King. Second row: Trey Berry, Benji Post, David Sims, Phil Brown, Roger O'Neel, Gene Whisenhunt, Ken Shaddox. Third row: David Wilson, Terry Morris, James Rowe, Al Stanford, Ed Kok, Bobby Smith, John Hill. Fourth row: Dennie Ashley, Carlos Iochter, Steve Hartley, Paul Williams, Alan Quigley, Kevin Barnes, Scott Byrd, Andy Edwards, Walter Dodd.



MEMBERS OF GAMMA SIGMA EPSILON ARE: Front row: Teresa Parr, Angie McMoran, Sandy Carleson, Robin McAlister. Second row: Jay Petty, Kelly Norton, Chuck Whitlow, David Pope.

Applications, competition, and travel (cont.)

Besides these projects AHEA attended a leadership conference in September, and planned to travel to Dallas to visit the World Trade Center in March and attend the state convention in April. Closely associated with the Home Ec. club was the American Dietic Association which had about 10 members.

Another group which took on in-service training projects was Ministerial Alliance, sponsored by Dr. Vester Wolber. One example of such projects was the trip to Dallas to visit one of the Southern Baptist Convention's largest churches, Park Cities Church.

The Alliance visited several congregations of various sizes and locales to familiarize the students with the conduct of the church organization. They also had pastors and denominational leaders share practical suggestions at their regular meetings.

Speakers in the area of education gave Kappa Delta Pi members helpful ideas much like those speakers invited by Ministerial Alliance. Kappa Delta Pi, sponsored by Dr. Thurmon Watson, was the national honorary fraternity in education. They had about 40 members. Qualifications included being a junior or senior with a 3.0 average in the field of education.

Another organization open only to juniors and seniors was Alpha Chi, sponsored by Dr. Johnny Wink. The students invited into this national fraternity had to be in the top ten percent of their class academically. While the club did not have regular meetings, they did offer a nationwide fellowship.

The H.Y. Benedict Fellowship for \$850 was to be used by the recipient to pursue his education toward the master's, doctor's or other professional degree. Mary Elizabeth Eudy was selected last spring as one of three national recipients. Out of the hundreds of chapters of Alpha Chi, the local chapter had winners two years out of nine.

Much like the award presented by Alpha Chi, Phi Alpha Theta offered a reward for the best research paper submitted. Phi Alpha Theta was an international honor society for history majors with a 3.0 overall average and was advised by Dr. Tom Auffen-

Grades did not restrict students from membership in Phi Beta Lambda, it was open to anyone interested in business. They met approximately every two weeks to discuss club business. Besides regular meetings they had businessmen's breakfasts, toured the Klipsch plant in Hope, had a Christmas party and sold candy to raise money for the state convention trip.

One national honor fraternity which did not base its membership on a particular area of interest was Blue Key. Blue Key was however, restricted to male sophomores, juniors, and seniors with a 2.75 grade point average. The members were also to be known for their leadership as well as scholastic qualities, and sophomores had to rank in the top ten percent academically of their class.

Blue Key's main project was the Miss Ouachita Baptist University pageant. They also sold mums and boutonnieres for homecoming.

The National Honorary Society of Pershing Rifles was a military science organization whose purpose was to encourage, preserve, and develop the highest ideals of the military. Pershing Rifles was active on campus by providing the color guard for football and basketball games, sponsoring a Haunted House and an orienteering meet, and providing an ROTC scholarship fund. Pershing Rifles also traveled to the Mardi Gras parade, competed in drill competition.

A sub-group of the Pershing Rifles was Rangers, "the elite" of ROTC according to sponsor Maj. Clements. Membership for this organization required passing a rigorous physical test and a water survival test. The Rangers were active in mountaineering, tactical patrolling, and exercises with the National Guard and Reserve units.

Whether membership in the organization called for physical strength, leadership skills, or academic excellence they provided students with the opportunities to further their knowledge or skills in their area of interest. Often membership in such academic organizations aided students in furthering their education with graduate work. "That's what it's all about," said





MEMBERS OF PHI BETA LAMBDA ARE: Front row: Glenda Clifton, Rebecca Griffis, Mike Fry, Nancy Hassell, Georgianna Manuel, Darlene Phillips, Dorothy Trigg. Second row: Kay Allison, Brenda Beck Lorrie Lindeblad, Autumn Weaver, Cindy Jones, Lauralyn Alphin, Pam Drew. Third row: Sandra Lowery, Pam Randolph, Janean Shaw, Lisa McCoy, Denise Drew, Cindy Hubby, Lesli Moore. Fourth row: Todd Lee, James Rowe, Walter Dodd, Jeff Humphry, Mr. Eddie Ary, Dennie Ashley, David Self, Tony Smith, Jeff Looney.



MEMBERS OF PSYCHOLOGY CLUB ARE: Front row: Lavena Woodard, Mary Beth Cox, Tina Shiflett, Paula McKinley. Second row: Conway Stone, Dr. Randy Smith, Mike Ekdahl, Ric Atkinson, Mark Whitmore, Chuck Lewis.



MEMBERS OF PERSHING RIFLES ARE: Front row: James White, Anita Warren, Mark Railey, Steve Russell. Second row: Andrew Brown, Corey Branson, Billy Robinson, David Collins,



MEMBERS OF RANGERS ARE: Front row: Clint Morris. Second row: Anita Warren, Ruth Ballinger, Katrina Stanley, Bobby Faulkner. Third row: MSG Brown, Russell Branson, Larry Floyd, Clark Easter, James White, Mark Railey, Comm. Scott Byrd.

MAN'S WORK IS NEVER GOOD TO THE LAST BITE. *At the Pershing Rifles Haunted House, James Miller and Krista Lind portray Dracula and his wife. — photo by Mike Thomas*

MAN'S WORK IS NEVER *Mending the curtains in all Auditorium was one of the campus service projects. Dig and sewing, Laura Griand Stacy McCollum mend ear. — photo by Ken Cox*



TWO BASS DRUMMERS. *Watching carefully to keep the beat with the drum major, Mary Alice Chambers and Dan Beard perform during one of the home football games at halftime. — photo by David Nash*

PERFORMING. *Many groups on campus sang for the students throughout the year. The group Agapé gives an outdoor concert in the plaza. — photo by Mike Thomas*



Musically exposed

Most of the musically inclined people who came to school here entered Mabee Fine Center as freshmen and were again until their recitals. This was the one of most music majors. There were other students who were musically inclined that chose to major in music, able to find outlets for musical talents whether playing an instrument,

composing music, working with sound systems or singing.

One of these many outlets was the band. Consisting of almost 100 people, the marching band, directed by Marvin A. Lawson, played at every home football game and performed during halftime with the majorettes, flag line and rifles. The band held several outdoor concerts and included two pep bands that performed at pep rallies and out-of-town football games. The concert band, selected from members of the marching band,

continued



OUACHI-TONES MEMBERS ARE: Front row: Terry Griffin, Renee Oakes, Elise Arrington, Kina McGrew. Second row: Shari Deaver, Shannon Bowen, Christine Roberson, Susan Allred, Joyce Bradley. Back row: Susan Randolph, Dynette Shrader, Marla Reeves, Patrice Singletary, Kim Connelly, Deanna Briley, Jonna Price.



OUACHITA SINGERS MEMBERS ARE: Front row: Leslie Berg, Susan Rogers, Kim Wright, John Hessler, Kale Magness, Dwayne Chapel, Kelly Hayes, Sherri Price, Lori Reeves, Susan Randolph, Renee Oakes. Second row: Ellen Kirk, Elise Arrington, Richard Wentz, Steve Moore, Larry Killian, Kenda Reeves, Suzanne Lewis. Third row: Beth Laney, Tammy Tipton, Rick Briscoe, Rex Piloher, Rusty Hart, Susanne McElroy, Amy Byrum. Back row: Larenda Haynes, Alan Braokley, Jeff Bennett, David Coad, Carlos Iochter, Dave Ekstrum, Don Brown, Patrice Singletary.



VOICES OF FAITH MEMBERS ARE: Front row: Clinton Bell, Darryl Norman, Darryl White, Billy Scott, Barry Dobson. Back row: James Dorough, Terry Thomas, Chris McCollum, Robert Butler, Juan Wesson, Ricky Rhodes.

A member of the graduate assistant is playing one of the marching band. —

Musically exposed (cont.)



ORDINARY PEOPLE MEMBERS ARE: Front row: Phyllis Porchia, Brenda Belk, Cathy Loggins. Second row: Clinton Bell, Darryl Norman, Darryl White, Billy Scott, Barry Dobson. Back row: James Dorrrough, Terry Thomas, Chris McCollum, Robert Butler, Juan Wesson, Ricky Rhodes.



AGAPE MEMBERS ARE: Front row: Rhonda Fuller, Becky Ross, Jennie Armstrong. Back row: Jeff Stotts, LeAnn Jimerson, John Howeth, Anita Smith, Kelly Norton.

performed in the recital hall throughout the year.

Another music group that performed several times during the year was the Ouachita Singers. This group was made up of 40 students selected by auditions at the beginning of the fall semester. Directed by Dr. Charles Wright, Dean of the School of Music, the singers made weekend trips to churches throughout the state, and held their annual Christmas and spring concerts. This group has toured throughout the United States and Europe, and along with being a credited class, the singers were required to sing in the University Choir.

The Chamber Singers was another group where the students could receive credit while enjoying singing. Chosen by audition the 15 member group led by Dr. Tom Bolton sang for various churches and held the traditional Christmas service of "Lessons and Carols" and their annual spring concert.

One concert that was a sell-out

was the annual Ouachi-tones Concert held in January. Ouachi-tones was an all group consisting of 11 selected by audition. Under the direction of Mrs. Mary Barger, associate professor of music, this group traveled an average of two times each throughout the year, and as one of the groups in public relations for the school. The Ouachi-tones have toured the U.S., Europe, and the Caribbean.

The Singing Men, a 20-all-male group led by I. Hammond, sang at churches across the state and performed their annual concert in the recital hall. This group is also from auditions held in the semester.

These groups all practiced several times a week in the music building and received academic credit for their participation. Other groups existed on campus that originated and performed

continued



FRENCH HORN PLAYER. The marching band contains several outstanding musicians, one of whom is Kim Wright, winner of the state and regional MTNA Collegiate Brass competition for French horn. This qualified her for national

A LONE HORN. Trombonist Mike Spradlin practices in the recital room for a later performance. Photo by Ken Shaddox



Musically exposed (cont.)

not for credit but for personal satisfaction and a need to sing and share their message through music.

Among these groups was Ordinary People and the Voices of Faith choir. Both performed on campus and other locations during the year. Agapé and Under Construction were two other groups that made weekend trips to churches in Arkansas and surrounding states.

Music-oriented groups that were not only campus-wide but also held national status were Sigma Alpha Iota and Phi Mu Alpha. SAI was a national music sorority, and PMA was a music fraternity. These two groups held their pledging for three weeks in the spring semester for those

students who wanted to become members. The music clubs performed different services for the school, such as sponsoring activities and holding music major mixers.

Whether he was a music major or just a musically inclined individual, whether he wanted to sing gospel rock, "high church" music, or spirituals, anyone could find a place to fit in among the various groups that existed on campus. — Beth Laney OU

MEN SINGERS. Every Tuesday and Thursday almost 200 students gathered in the choir rehearsal room to practice for their various performances. John Hill, Rick Brisco and Mike Fry were only a few of the singers who made up the baritone section. — photo by David Nash



THE CHOIR. The University Choir performed their annual program for the Arkansas Baptist Convention during the fall semester. — photo by Ken Shaddox

OUACHI-TONES. Singing their song, Renee Oakes, Deanna Briley, and Joyce Bradley, members of the Ouachi-tones, perform at one of the many appearances that the group makes during the year. — photo by Ken Shaddox





PHI MU ALPHA MEMBERS ARE: Front row: David Clark, Steve Bulloch, Dwayne Chapel, Larry Killian. Second row: Clifford Case, Roger O'Neal, Doug Johnson, Arnie Lawson. Back row: Tony Smith, Mike Keene, Gene Trantham, David Wilcox, Mark Fawcett.



SIGMA ALPHA IOTA MEMBERS ARE: Front row: Carrie McKinney, Dana Jones, Susan White, Becky Lyons. Second row: Carol Titsworth, Jenie Armstrong, Mary Alice Chambers, Lisa Nevin, Lesli Berg. Back row: Christi Lyday, Tina Shiflett, Alisa Cole, Tammela Butler, Janine Reaves, Amy Byrum.

Five communications staffs shared the responsibility presenting the year in black and white

Making the headlines

F

lenniken buzzed with the sound of rolling presses, snapping shutters and clacking typewriters.

The den of busy machines drowned out conversation in the print shop. Nevertheless Pascal Stowell shouted an occasional "Git up," to his fellow employees. The atmosphere in the printing department was relaxed as the employees ran prints of the *Ouachi-Talk* and *BSU Light* or shot PMT's of student directories and course preference survey booklets. Although some employees preferred running PMT's to strip printing, they all worked diligently at whatever task they were assigned. "I enjoy my work," said Jamie Wood. "It's something that I could get a job

doing if I ever needed to, when I'm out of school."

Working closely with many campus organizations, the printing department ran personal orders as well as printed tickets, programs, brochures and schedules for many campus activities.

Across the hall in the news bureau office Mac Sisson juggled telephone calls on two lines while stacks of yellow copy paper flew through the typewriters.

Often referred to as "Mac's crew" the news bureau writers worked daily to send news and sports releases to news media around the state and nation. Under Mac's supervision, the staff reported on campus activities, organizations and clubs. In addition to covering campus news events, writers attended all sports competitions and provided coverage and kept records of statistics and scores.

Anyone climbing the stairs to the second floor on Wednesday night heard the simultaneous clacking of three typewriters coming from the Signal. Further inspection revealed staffers standing at the light boards, pasting up titles, copy and headlines for the publication. Conversation was sparse as each member worked on aligning or cropping photos or outlines. The staffers waited for the final paste-up to be done in time for Thursday's edition.

Photographers could be found around every corner and

continued

PRINTMAKER. Roger Robb, assistant supervisor, works at the printing machine to complete the many orders which the department received daily. — photo by Ken Shaddox



GETTING AROUND. One of the many responsibilities of Signal editor Sonja Clinesmith is circulation. The Signal is mailed to colleges, high schools and libraries all over the nation. — photo by Ken Shaddox

CALM BEFORE THE STORM. Yearbook deadlines mean hectic days and long nights in the photo lab for the photographers. Ken Shaddox checks picture orders before starting work in the dark room. — photo by David Nash





MEMBERS OF THE SIGNAL STAFF ARE: Front Row: Judy Waight, Rhonda Fuller, Robin Harwell, Sherri Price. Back row: Reade Mitchell, Sam Stricklin, Jim Yates, Sonja Clinesmith, Jeff Root, Deborah Root.



MEMBERS OF THE NEWS BUREAU STAFF ARE: Front row: Georgianna Manuel, Deanette Ashabraner, Mac Sisson, Denise Kneisel. Back row: Sarah Atkinson, Melinda Ingram, Sam Leeper, Leslie Moore, Vicki Taylor.



MEMBERS OF THE OUACHITONIAN STAFF ARE: Front row: Wendy McInvale, Elaine Stamper, Shann Nobles, Terry Melson, Beth Morehart. Second row: Phylisa Carruth, Paula Holland, Beth Laney, Dena White, Robin Robbins. Back row: Nickol Northern, Larenda Haynes, Steve Bowman, Tim Wooldridge, Steve Farris.



MEMBERS OF THE PHOTOGRAPHY STAFF ARE: Ken Shaddox, Kristi White, Tracy Meredith, David Nash.



EMPLOYEES OF THE PRINTING DEPARTMENT ARE: Front row: Tami Watson, Sharon Magyar, Terri Vanlandingham, Mace Robinson, Jamie Wood, David Nziramasanga. Back row: Mr. John Savage, James Harvey, Robert Butler, Pascal Stowell, Ronald Bateman, Roger Robins.



every door. Hurrying down the stairs, David Nash dashed to his car then ran back upstairs with an armload of developing chemicals. After spending three hours printing photos for the *Signal* and *Ouachitonian*, Tracy Meredith trudged across campus to shoot another AIC basketball game in the newly remodeled Rockefeller Gym. Meanwhile the director of the photography trio, Ken Shaddox, ran contact sheets and discussed the best shots for inclusion in the Miss OBU program with Mac. The photo lab secretary Kristi White catalogued negatives and numbered contact sheets for the proof folders. Kristi also handled all incoming orders. The photo lab was responsible for printing all photos for the *Ouachitonian* and *Signal* publications as well as those accompanying news releases. The photographers also shot and printed numerous personal orders and projects for Dr. Bill Downs and Mac. "We were super busy during the second semester with only three photographers," said David Nash. "Just keeping up with the yearbook deadlines was hard enough. Then we had to cover the NAIA swim meet. We could have used some help!"

Fourteen people crowded into the *Ouachitonian* office for the first practicum meeting of the school year. Tim Wooldridge, editor, gave the new staff members a brief outline of the deadline schedules, design concepts and steps required to select

and order photos. Everyone was assigned a story or feature and the meeting ended. Three months and three deadlines later that number had dwindled to a handful of staffers who put out the effort involved in publishing an award-winning yearbook. Staff members on college work-study schedules were required to put in nine to 12 hours per week, but most spent extra time in the *Ouachitonian* office, especially during deadline week. "I think I lived in the *Ouachitonian* office for three days during the February deadline," said Steve Bowman, sports editor. "I'd sleep for a few hours then wake up and start writing captions again."

Nighttime gave staffers an opportunity to work uninterrupted by class schedules. The pressure of an upcoming deadline was relieved by an occasional pizza from Pizza Hut or a box of popcorn contributed by Dena White, copy editor.

In February the staff was notified that the yearbook publisher had closed its doors and gone bankrupt. Spirits sank momentarily, but the work went on. Finally word was sent that the contract had been transferred to another company. Sighs of relief were heard; but the pressure of the final deadline postponed a victory celebration until after spring break. "We started the year on a roll," said Tim. "We hit a few snags along the way. Now that it's all over, we realize it was a lot of hard work. But it was worth it." — Beth Morehart



DEADLINE BREAKS. After writing captions and copy until 5 a.m. Steve Bowman catches a few hours of sleep before finalizing his sports layouts. Steve and other staff members spent more time in the *Ouachitonian* office than anywhere else during deadline week. — photo by David Nash

EDITORIAL OPINION. *Ouachitonian* editor Tim Wooldridge explains the procedure for indexing pages in the yearbook. The responsibility of indexing was a tedious job which the staff members shared. — photo by David Nash



SHUFFLED FILES. Sending news releases was only one of the many jobs which news bureau staffers undertook. Georgianna Manuel stuffs envelopes to send with the daily mail. — photo by David Nash

From the opening week of school until graduation in May, service clubs offer programs and meet student needs

Busy from the beginning

Greeting freshmen with helping hands and warm smiles, student leaders representing almost all campus organizations, welcomed new students to school.

The Student Entertainment and Lecture Fund (SELF) provided entertainment the first night as they sponsored the movie, "What's Up Doc?". On Saturday, SELF sponsored a scavenger hunt and Tuesday, psychic entertainer, Gil Eagles. Concluding opening week was the

first SELF concert, contemporary Christian songwriter and recording artist, David Meece.

Through the remainder of the year, SELF offered educational as well as entertaining events like fine arts performances, the Last Lecture series, 32 movies, and six concerts including an unplanned performance by Paul Davis.

The Baptist Student Union got into the act opening week by sponsoring the Freshman Talent Show Monday night. Also in the fall, BSU held a retreat for freshmen and transfer students.

While their many ministries kept them busy, BSU still had time to work on a Tiger Tunes

continued



A CARD TRICK. Singing Monopoly cards were actually BSU members performing in Tiger Tunes. Here, Teresa Stout shows her talent. — photo by Tracy Meredith

MOVING IN. Student leaders meet freshmen with helping hands as they move into the dorms, their new homes. — photo by David Nash









BSU EXECUTIVE COUNCIL MEMBERS ARE: Front row: Suzette Raney, Judy Waight, Barb Griffin, Linda Anderson, Cheryl Warren, Robin Birdwell, Sandy Butler. Second row: Mark Tetley, Carl Buford, Phil Brown, Bob Hall, Steve Russell, Bill Wood, Nina Stewart. Back row: Rex Pilcher, Jerry Miller, Terry Fortner, Fred Ball, John Howeth, Brent Fields, Dwight Magnus.



BSU FRESHMAN COUNCIL MEMBERS ARE: Front row: Tina Johnson, Rhonda Auten. Second row: Bonnie Franklin, Patti McQueen, Beth Nutt, Melanie Moore. Back row: Sherri Price, Janet Reynolds, Mike Tucker, Darren Williams, Shelly Gill, Jamie Wood.



OUACHITA PLAYERS ARE: Front row: Kathy McElduff, Tammy Dutt, Sandra Johnston, Beth Nutt. Back row: Darren Williams, Laura Wikman, Doug Johnson, Nickol Northern, Mark Rutherford.

for the theme of "88 Good Deeds" they took the prize for costume.

Another successful event for BSU was Christian Focus Week. Led by chairman Barb Griffin the week was, according to several faculty and staff members, the best they had seen.

One outreach of BSU was the Ouachita Players, a Christian acting group that performed at various churches in the state.

The Association of Women Students was the last organization involved in opening week activities with their annual Style Show. AWS acted as the governing body for all women on campus but also provided services such as a seminar on rape prevention and a bridal fair in the Spring.

Another governing and service body was the student senate. Made up of elected student representatives and the presidents of each class and each organization, senate provided an outlet for students to voice their concerns and needs. Senate also

continued

TOGETHER. At the BSU transfer retreat in the Ahsa Cole, Carol Stacey Melton per by Tracy Meredith

CHRISTMAS. A cheery from Garfield, the the SELF Christmas contest. — photo by

RILEY LIBRARY
OUACHITA BAPTIST UNIVERSITY





COLLEGE REPUBLICANS MEMBERS ARE: Front row: Cheryl Warren, Myra Conaway. Back row: Brian Watson, Rex Pilcher, Chuck Whitlow, David Sims.



MEN'S FCA MEMBERS ARE: Front row: Mike Seabaugh, Donald Knoll, Phillip Prime, Matt McBeth. Second row: Phil Brown, Scott Jackson, Keith Wheeler, Kevin Waters, Billy Edwards. Back row: Nate Rose, Sam Leeper, Mark Winscott, Todd Knight, Craig Melhorn, Van Barrett, Steve Snider.



WOMEN'S FCA MEMBERS ARE: Front row: Carole Shelton, Rhonda Criswell, Sarah Atkinson, Betsy Ray, Jan Mitchell, Kathy McElduff. Second row: Terri Hunter, Shari Deaver, Suzanne Duke, Deanette Ashabraner, Cheri Dawson. Back row: Sandra Lowery, Karen Williams, Mona Medlock, Hollye Henson, Beth Laney, Leslie Moore.

The Ouachita Student Foundation was also a student service organization. With their two main projects, Tiger Tunes in the Fall and Tiger Traks in the Spring, OSF raised money for scholarships for eligible juniors and seniors.

To aid students in learning about their prospective fields, OSF also sponsored a shadowing program in which students observed professionals in their field of major.

The Black American Student Society sought to unite black students with regular meetings and projects. An annual project for this group was Cultural Awareness week. The highlight of this week was a banquet featuring Rodney Slater as the guest speaker. Other projects included a talent show and a fashion show. They planned to use the money from these events for a scholarship.

Two competing service organizations were the College Repub-

continued

OUT. At a social for the students in the home of Sonja Burnett serves appetizers. — photo by Tracy

MEETING. During a rehearsal, OSF director Elise Arrington, hostess Elise Arrington, member Lisa McCoy listen to a presentation from Gary Arnold. — photo by Ken Shaddox


Busy from the beginning (cont.)

lians and the Young Democrats. During election semester the organizations brought candidates to campus. During other semesters they worked to inform students about current political events.

The College Republicans had a campus canvas and went door to door making sure students were registered to vote. Also, five members of the organization graduated from a fieldman school, a three-day intense training workshop.

Other active organizations were the men's and women's Fellowships of Christian Athletes. These groups met regularly and had share times and Bible studies.

Once a month the two groups met together for a "Huddle and Cuddle" meeting. They also had a joint retreat in the fall and went to Branson, Missouri.

With weekly meetings, monthly meetings or just called meetings students were kept busy with their organizations. — Wendy McInvale 



SELF's Annual

AVENGER HUNT



READY FOR THE HUNT. During freshmen orientation, SELF executive council members, David Green, Dianne Phillips, Wendy McInvale, David Sims, Paula Mace, Mark Kizzar, and Myra Conaway wait for the hunters to return. — photo by Tracy Meredith.

FIFTY CENT MOVIES. Lesli Moore and Deanette Ashabranner pay 50 cents to see "Where the Red Fern Grows". SELF worker Susan Caldwell sells them the ticket. — photo by David Nash





SELF MEMBERS ARE: Front row: Betsy Ray, Myra Conaway, Sandy Butler, Jeannette Goacher, Tina Johnson, Carrie Casey, Dawn Chambliss. Second row: Robin Mack, Karen Spencer, Ruth Reaves, Susan Caldwell, Melanie Moore, Ann Pryor, Lynda Brown, Nina Stewart, Paula Mace, Dianne Phillips. Back row: Conway Stone, David Green, Vnoe Everhart, Brian Keltner, Taylor King, Scott Bryant, David Sims, Charlie Moss, Bruce Green, Corey Work.



STUDENT SENATE MEMBERS ARE: Front row: Barb Griffin, Myra Conaway, Beth Paek, Tami Snow. Second row: Vicki Taylor, Carrie Williams, Lisa Taylor, Latenia Beed, Leann Sandifer, Judi Holcombe. Third row: Sam Stricklin, Wendy Long, Mike Seabaugh, Jay Nicholson, David Sims, Scott Harrington, Paul Williams. Back row: Bruce Green, Mike Landrum, Allan Perry, Carlos Ichter, Drew Shofner, Alan Quigley, Taylor King, Tiffin Hubbard, Hal Bass.

Month of madness

The beginning of February brought a state of excitement and havoc on campus, and when informals finally ended, club members and pledges found time to breathe a sigh of relief

by Paula Holland

ey, remember that we have rush practice this afternoon."

"Come on, guys. We have to move the saloon scene down to the basement."

"I wonder what I'm going to wear tonight?"

"Hurry up! We can't be late to the first party."

"We vote in Flenniken tonight, so we'll get started as soon as everybody gets there."

"I got a bid!"

"Brace, pledge!"

"Man, I wonder if this week will ever end. I'm nearly dead!"

Familiar phrases such as these rang through the ears of many a Ouachitonian as rush and pledge weeks quickly drew near and fell upon us. Throughout campus, rushees and club members prepared for this exciting and memorable time — a time to meet new friends and add variety to the existing club memberships.

It all began quietly in the fall with informal drop-ins and mixers, but when the spring semester arrived, rush week hit like a bomb as backdrops were brought out of storage and members spent hours preparing skits, programs, and the food for their various rush parties. At long last, the week of women's silence got the show underway, as rushees and members weren't allowed to converse outside of the parties without a member of another club present. But that was okay, for the girls found that all the chatter that went on during the parties more than made up for what was missed during the rest of the week. And with that, women's rush was in full swing.

It was an excitingly nervous and busy time. The week was filled with big decisions that had to be made. Members learned to juggle class and work schedules, coping with the dilemma of sleepless nights due to hours of voting, while rushees spent restless nights making a choice that would affect the remainder of their college years.

And, finally, the last preference sheet was turned in. The last vote was counted, and each women's group proudly received its pledge class. "Bid Day" arrived that sunny Sunday afternoon in February, and members gathered to the front lawn of Cone Bottoms and to the watch what was called "the races." Screaming and cheering poured from the various dorms and rushed to the groups that they would come to be associated with. The guys brought lawn chairs and the Conger Club members sat back, and enjoyed the show.

But, beginning the next day, the guys were busy with everything but sitting still as they got ready for the start of men's rush. Food had to be ordered and prepared, places of the parties set up and decorated, and all the arrangements had to be made with the girls who were to serve the refreshments for the events.

As the week wore on, the rushees and members found the same thing that the women had found the week before — many big decisions had to be made and many long nights were spent by members in long voting sessions.

continued



GETTING THE SCOOP. Freshman David Binns acquaints himself with members of the Beta Beta social club during their first rush party. — photo by Ken Shaddox

GOING TO THE CHAPEL. Sigma Alpha Sigma pledges escort their dates to Noonday services. Some clubs required their pledges to attend Noonday every day of pledge week. — photo by Tracy Meredith





PRETTY PLEDGES. Dress-up day is an interesting experience for EEE pledges Susanne McElroy and Lori Reeves. All EEE pledges were given a costume to wear while sporting 24 pincurls in their hair. — photo by Ken Shaddox

HEADED FOR THE RIVER. Manning the Beta boat was just one of the duties of the Beta pledges during the week. — photo by Ken Shaddox



"I GOT IT!" *Sophomore Sarah Atkinson expresses her excitement after receiving her EEE bid. Junior member Kelly Patterson welcomes Sarah to the group. — photo by Tracy Meredith*

PUNK BRIDE. *Zeta pledge Shanna Nunnally discusses wedding plans with punk bride Dynette Shrader. With Beta Beta pledge Judson Ridgeway posing as the preacher, Dynette was married to Rho Sigma pledge Jeff Long. — photo by Ken Shaddox*

Month of madness (cont.)

ball parties," while the rushees contemplated what next move would be.

Today morning and the men's "Bid Day" rolled in and though there was an evident excitement in the guys' reception of their coveted bid wasn't as climactic as the girls'. For instance, a group of new pledges strutted to their mailboxes, opened the doors simultaneously, then gathered together and exchanged a few whoops and hollers before they left with bid in hand to the various places where the bid was to be turned in.

At the traditional EEE song that said, "Though it turned to pledging, and the pledging turned to bid," came to life the next week as pledging activities and many interesting sights were seen around campus. Windows of dorm rooms were painted with the names of club symbols, the Conger bench and the fire station in the middle of campus were decorated with many huge signs that bore the new pledges' names and signs in the cafeteria.

One of the best things to watch that week was the Red Shirt pledges guarded a pet pig, had their hair dyed red, and made the song "Little Bunnies" famous, while the Zeta pledges passed out turtle shells and called everybody "sir" and "ma'am". The Phi pledges mooed at the milk machine, stiffened when anybody yelled "Brace, pledge!" and had a

strange obsession with singing "Shall We Gather at the River", while the EEE pledges carried red wooden E's around, wore their hair in 24 pin curls, and painted their nails and lips a bright crimson color that matched their clothing quite well. The Gamma Phi pledges wore headbands with purple feathers in them and took great pains to guard a teepee that the Rho Sigma pledges kept trying to knock down, while the Kappa Chi pledges were supposed to be perfect gentlemen all week long, wore nice sweaters and slacks, and kept telling everybody to "Get up!" And the Sigma Alpha Sigma pledges wore top hats and carried signs painted with their club name, while the Chi Delta pledges were a hoot as they hopped across the sidewalks, dressed as owls, and took an interest in griping out the salad bar.

It was a busy week — a week filled with members to visit and duties to be done, notebooks to sign and rounds to go on. And in the end, the members were probably as tired as the pledges, if not even more so. But the good things that came out of rush and pledge weeks — the new friends that were made, the unifying task that drew a pledge class and their club closer together, and the fond memories that were made — seemed to make up for all of the bad. And, because tradition seemed to run as deeply as it did at Ouachita, rush and pledge week would probably be around for a long time. Probably just as long as the memories would be.

THE RAIN DANCE WORKED. Gamma Phi pledge Sandra Maroon protects herself from the rain as she takes her turn guarding the Gamma teepee. — photo by Tracy Merideth



"I WANNA BE A RED SHIRT." Rho Sigma pledges perform at a Tiger basketball game as one of their pledging activities. — photo by Davis Nash

THE RUSH IS ON. Rushee Deanette Ashabraner gathers information about rush from Amy Byrum, a member of the EEE women's social club. — photo by David Nash

Beta Beta

A

hayride, cookout, and fireside entertainment provided by Phil Glover and Trey Berry — a Beta bush party.

The October bush party, like the banana split party in September, gave the Betas and their dates a time to sit and socialize.

Another favorite place for Betas to socialize was the Beta bench. Located in front of Conger Dorm, the bench was known to other people as the "viewing stand."

Founded 1941

Homecoming brought the annual Alumni Drop-in, and Christmas was celebrated with the Beta Beta Ski Lodge and a first place entry at the Sub Christmas Decorating party.

Spring semester, the Betas sponsored the movie, "Shennandoah" and held their Valentine Banquet at the Capital club in Little Rock. Then came rush and pledge weeks.

Throughout the year the Betas were active in intramurals and frequently made midnight serenading visits to the women's dorms. — Wendy McInvale



DOWN ON MAIN. At an old fashioned ice cream parlor, Donny White talks to a friend at the Beta Banana Split party. — photo by Ken



Glover tries to pass the ball past the opposition's defender. — photo by Ken Shaddox

Homecoming drop-in, Beta members Kale Magness and Benji Post talk about the past with a former member. — photo by Ken Shaddox



MEMBERS OF THE BETA BETA SOCIAL CLUB ARE: Front row: Bobby Gasser, Lynn Bradley, David Sims, Rick Briscoe, Kale Magness, Carlos Iochter, Gene Whisenhunt, Mark Kizzar, Robert Jayroe, Joe Layton, Scott Harrington, Trey Berry, Andy Edwards, Doug Keeton. Second row: Ken Shaddox, Mike Baldwin, Paul Williams, Doug Lancaster, Arnie Lawson, Vincent Thompson, David Pope, Harry Morphew, Scott Byrd, Don Simmons, Mick Murphy, Phil Glover, David Mosely,

Tiffin Hubbard, Billy Edwards, Gary Wise, Mike Moore, Jay Nicholson. Third row: Scott Meador, Daryl Peeples, Ric Atkinson, Tom Strickland, David Rothwell, Chris Owens, B.J. Brown, Andy Landrum, Chuok Hitt, James White, Mike Seabough, Scott Jackson, Donald Knoll, Tino Jones, Phil Whiteaker, Chris Sutton, Benji Post, Greg Yurohis. Back row: Marty McDaniels, Donny White, Alan Quigly, Joey Baugh, Steve Efurd, Dennie Ashley, Bruce Burnett, Kevin Barnes.

Chi Delta

B

eam up the Bison", a replica of the Starship Enterprise, complete with exhaust —

the Chi Delta homecoming float entry. With the work of members and beaus, Gary Arnold, Rooky Fawcett, Scott Harrington, Guy Wade, Kevin Williams, and Paul Williams, a first place winner was produced

Founded 1970

for the fourth consecutive year.

Also winners among the Chi Deltas were Leanne Sandifer, homecoming queen, and Christine Roberson, "Ouachitonlan" Beauty.

Besides winning contests the Chi Deltas sponsored and participated in many campus-wide activities. The Harvest Moon dinner theater was the annual TWIRP Week production, and the spring semester opened with Ruby's Truckstop.

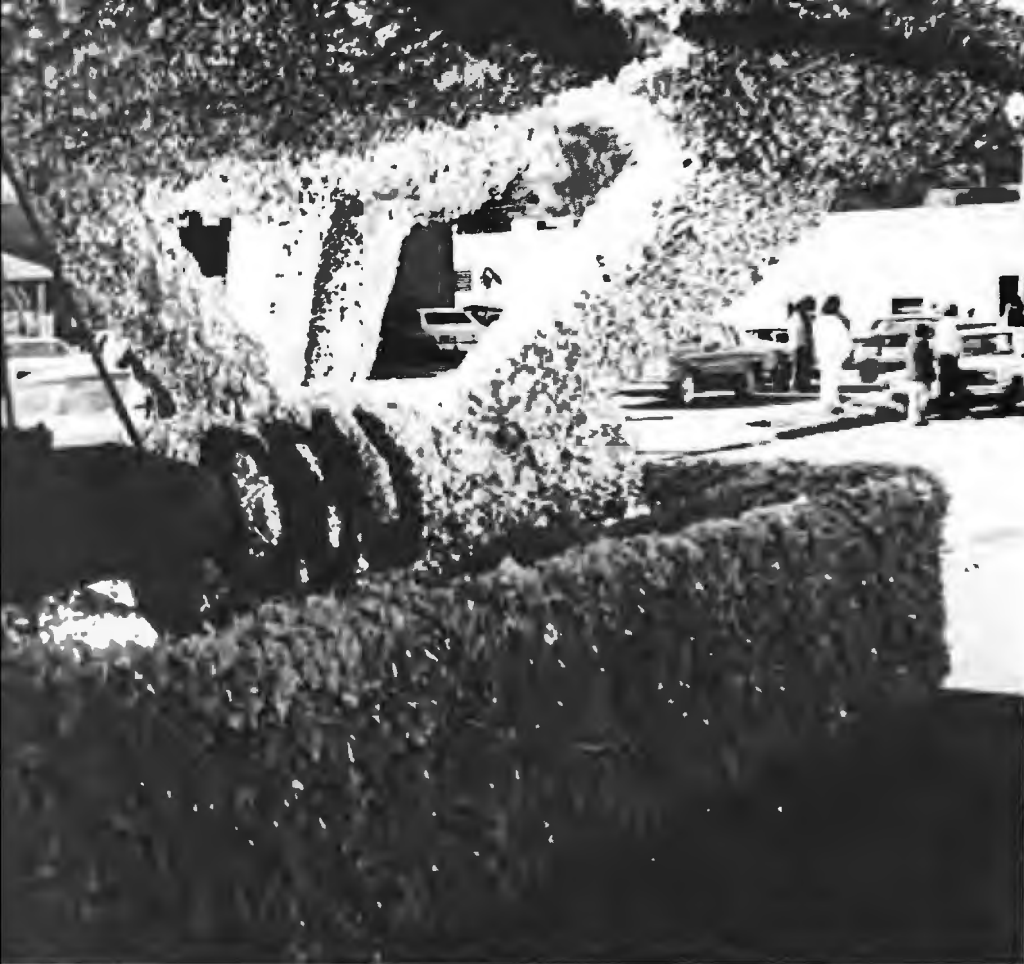
The Chi Deltas entered Tiger Tunes with the theme of "Bug Off" and throughout the year completed in intramurals. Rushing and pledging were, as usual, the peak of spring. — Wendy McInvale



"LOVE CHI DELTA STYLE." At the TWIRP Week final, the Harvest Moon dinner theater, Lori McKenzie French and Terry Griffin sing as Mary-Jane Lowman accompanies on the flute. — photo by Mike Thomas

CONCENTRATION. Tiger Tunes requires hours of practice by all participants. Chi Delta members Portia Massey and Carolyn Jackson





THE GRAND PRIZE WINNER. *The Chi Delta's homecoming float, a replica of the Enterprise, wins first place with the theme of "Beam Up the Bisons."* — photo by Ken Shaddox



MEMBERS OF THE CHI DELTA SOCIAL CLUB ARE: Front row: Cathy Carter, Debbie Richardson, Cheri Carroll, Georgianna Manuel, Teresa Thomas, Paul McGee, Stacy Bally, Cheri Vining, Susan Graves, Beth Hunt, Christine Roberson, Melanie Campbell, Cathy Crosskno, Perri Berthelot, Stephanie Williams, Sondra Nix. Second row: Leanne Sandifer, Janis Helms, Laura Efurd, Paula Nix, Robin Fink, Lou Ann Flanders, Barbi Wright, Jo Romesburg, Janine Buenconsejo, Glenda Clifton, Pam Randolph, Julie Benafield, Angela Fawcett, Mary Humphrys, Terri Tollett, Terry Griffin, Scott Harrington (beau), Kevin Williams (beau), Gary Arnold (beau). Back row: Rocky Fawcett (beau), Lei Malone, Portia Massey, Guy Wade (beau), Rhonda Saunders, Dorothy Trigg, Susan Allred, Donna Hartsfield, Krystal Johnson, Lori McKenzie French, Karen Purtle, Carla Cheatham, Mary Jane Lowman.

EEE

E.

T. found Christmas as shown by the women of the EEE social club. The popular character, played by Beth Garrett, was used by the EEE's to show the true meaning of Christmas in their annual production, "Coolside of Yuletide."

Founded 1925

The beaus were very helpful with other productions during the year including the luau during TWIRP Week and Les Fumes in the Spring. Beaus were Trey Berry, Kale Magness, Pat O'Mally, and Mike Treadway. The EEE Tiger Tunes entry "The U. S. Male" won second runner-up.

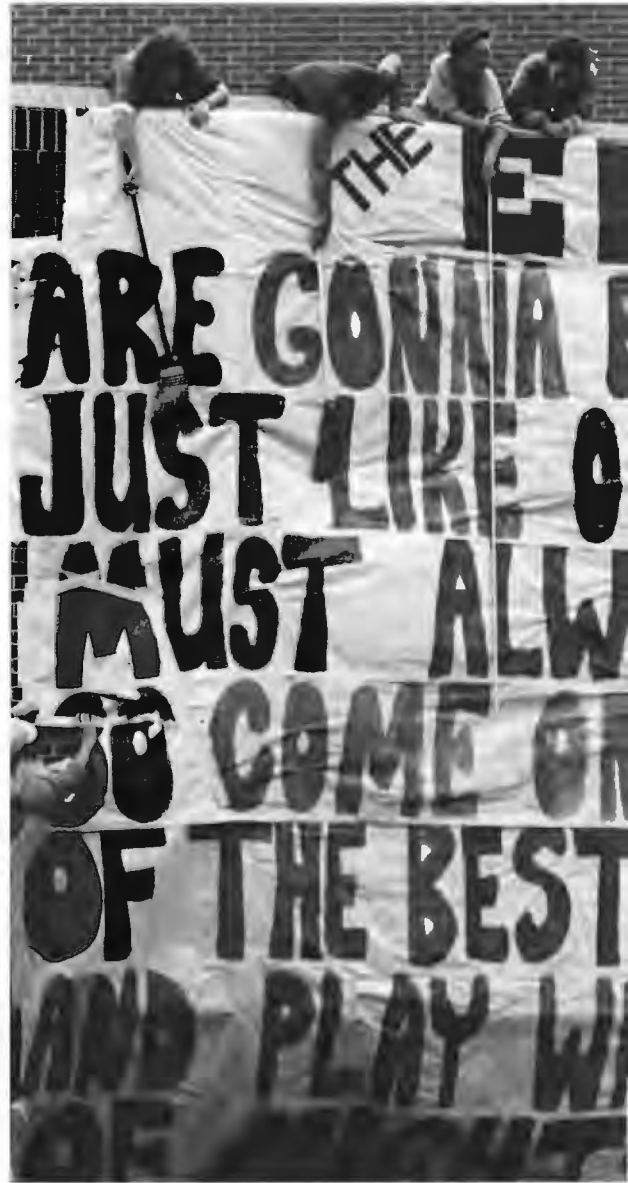
Another second place win for the EEE's came with the homecoming float, "The Best Little Fieldhouse in the AIC." The "Fieldhouse" oame complete with football players portrayed by senior club members. Other club members walked with the float and sang "Rompe and Stomp" from the movie "The Best Little Whorehouse in Texas."

Members participated in intramurals, pionics, oookouts, and bunking parties throughout the year and had two annual events, the homecoming tea and Christmas banquet, which was held at the Little Rock club. Rush and pledging in the Spring brought out the red lipstick and pinourls for the new pledges. — Wendy McInvale



MEMBERS OF THE EEE SOCIAL CLUB ARE: Front row: Suzanne Duke, Beth Garrett, Jenni Williams, Mona Medlock, Barb Griffin, Vicki Taylor, Karen Hill, Michelle Bone, Kim Duke, Michelle Sullivan, Cheryl Bass, Debbie Rowe, Renee Oaks, Lisa Morton. Second row: Shari Deaver, Beth Poe, Joan Duke, Billy Gay Clary, Lacy Taylor, Stephanie Nichols, Kathy McElduff, Paula Holland, Dawn Chambliss. Third row: Marla Whitworth, Gloria Garner, Mary Ann Wasson, Susan Parham, Carrie Williams, Judi Holcombe, Elise Arrington, Ann Pryor, Sara Shell, Kay Work, Donna Bowman, Lesli Funderburk, Teresa Albritton, Melinda Thomas, Ronda Murray, Beth Laney, Ann Owen, Karen Spencer. Back row: Kim Zachary, Sharla Whitworth, Kim MoGee, Lori Barnes, Jan Mitchell, Rebecca Meggs, Nancy Mosely, Penny MoClard, Jamie Smith, Trey Berry (beau), Kerri Culpepper, Mindy Culpepper, Mike Treadway (beau), Kelly Patter-

WRITING ON THE WA banner hanging from shows support for the fo Those hanging the sig Magness, Lacy Taylor, Kay Work and Corey Wo by David Nash





"WE'VE GOT THE BEAT". At the EEE luau during Twirp Week, the "Go Go's", Mona Medlock, Shari Deaver and Beth Garrett perform. Also included in the group were Jamie Smith and Elise Arrington. — photo by Ken Shaddax



E.T. FINDS CHRISTMAS. At the EEE Christmas program "Coolside of Yuletide" a Christmas tree (Shari Deaver) shares the meaning of Christmas with E.T. (Beth Garrett). — photo by Tracy Meredith

Gamma Phi

N

o rain fell on the BSU hayride or even on the luau, but when it came to the annual

Gamma Phi "Sadie Hawkins" carnival, the rain began. This time, however, it didn't stop or even slow down and "Sadie Hawkins, U.S.A." moved into Walton gym.

Founded 1944

Despite the rain, members and students alike enjoyed the annual Twirp Week car-

nival. Attractions included a toilet roll toss, kissing booth, Marryin' Sam, and tricycle races.

Another wet event for the Gammas was their spring outing, a float down the Buffalo. For a starting school reunion they again went to the water with an all-day beach party and picnic at DeGray.

With the help of Big Brothers — Bruce Burnett, Phil Brown, Greg Church, Todd Lee, Mike Maeda, Bobby Smith and David Wilson the Gammas' float entry won third place. The float depicted Coach Benson as Patton and bore the motto, "Blast the Blson."

Homecoming was also the time for the annual alumni tea, and Christmas brought a banquet at the Arlington in Hot Springs. — Wendy McInvale



STRATEGIC HUDDLE. During an intramural football game, Gammas,

Lyn Vance, smiles as she is named Miss Congeniality. — photo by Ken Shaddox



MEMBERS OF THE GAMMA PHI SOCIAL CLUB ARE: Front row: Carrie Casey, Lesli Sloveok, Sandra Ziegenhorn, Paula McKinley, Mona Moore, Lisa Byrd. Second row: Celeste Spann, Camille Bennett, Sheri Oaple, Ruth Reaves, Selena Kesner, Cammie Stephens, Connie Lawrence, Sheri Grober, Beth Olson, Monica Ashbrook. Back row: Susan Cheatham, Jamie Fowler, Stephanie Matchett, Vaughn Clary, Sarah Clark, Twyla Hughes, Karen Watkins, Kelly Garcia, Jane Brigance, Denise Rogers, Lyn Vance.



PATTON — COACH BENSON. Gamma Phi Big Brother, David Wilson portrays Patton on the Gamma's homecoming float. The float is 'guarded' by Gamma, Camille Bennett. — photo by Ken Shaddox

Kappa Chi

W

inning big, the Kappa Chis walked away with prizes for choreography, music, theme, overall entertainment and grand prize with their Tiger Tunes entry "Gangs". For this production the club became two street gangs with Nate Rose and John Hossler as the gang leaders. The musical depicted the meeting and eventual fighting of the gangs.

Founded 1982

Their energies were not all funneled into Tiger Tunes, however. They had a float trip down the Buffalo River in the spring and competed throughout the year in intramurals and community work days.

Homecoming was a special time for the Kappas as it was near their anniversary. In honor of that event they had a hayride.

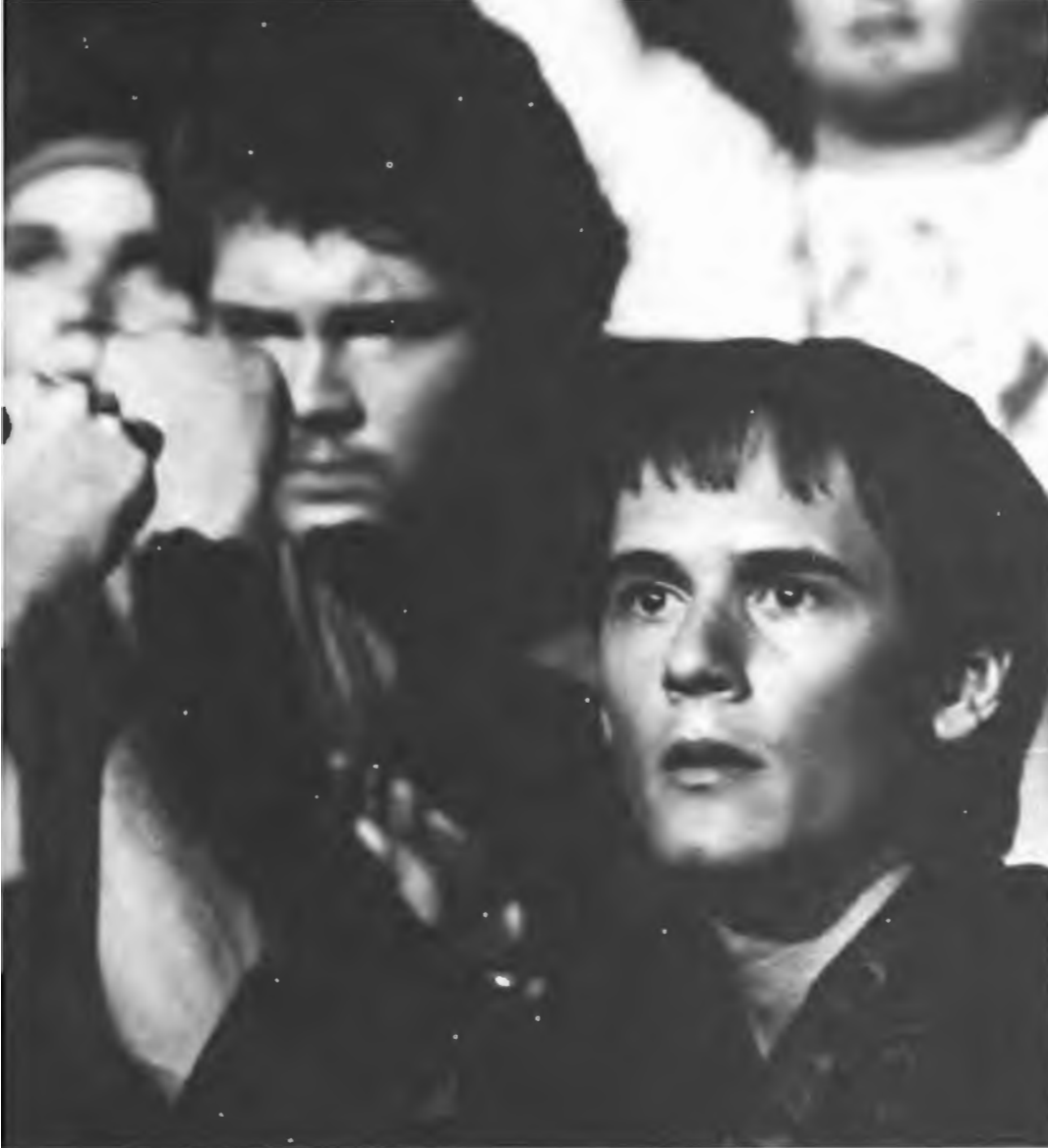
Homecoming also brought the Kappa Chis and Little Sisters — Cheryl Bass, Teresa Blue, Janine Beunconsejo, Dawn Chambliss, Kelly Garcia, Karla Hayes, Paula Holland, Linda Lloyd, Portia Massey, Ruth Reaves, Tammy Wagnon, and Sherri Ward — rolling down Main Street on a stagecoach. — Wendy **McInvale**

KOUP



MEMBERS OF THE KAPPA CHI SOCIAL CLUB ARE: Front row: Sheffie Kadane, Don Brown, Jeff Looney, Paul Price, Phil Cushman, John Hossler, Allen Brown, Rusty Hart, David Green, Phil Brown, Dave Ekstrum, Tommy Rademiller, Kelly Hayes, Darryl Norman. Second row: Paula Holland, Tammy Wagnon, Cheryl Bass, Portia Massey, Linda Lloyd, Teresa Blue, Kelly Garcia, Ruth Reaves, Dawn Chambliss, Janine Buenconsejo, Carole Shelton, Sherri Ward, (Little Sisters). Back row: Bert Lace, Nate Rose, Cary Cox, Blair Thomas, Al Stanford, Charlie Moss, Bruce Green, Larry Bennett, Tim Hubby, Todd Lee, Barry Raper, Scott Bryant. Fourth Row: Toby Anderson, Mike Spivey, David Adams, Bill Burton,





"GANGS! WE'RE GONNA LIVE FOREVER." The Kappa Chis won Grand Prize in Tiger Tunes with their theme of gangs. Pictured is the final clash between gang leaders Nate Rose and John Hessler. — photo by Mike Thomas



FROM OUT OF THE WEST. Clad in their boots and hats, the Kappa Chis ride through the homecoming parade on a stagecoach. — photo by Tracy Meredith



"THE GANG'S ALL HERE". As the gangs (Kappa Chis) line up for the big fight, they sing, dance and entertain for the Tiger Tunes audience. — photo by Mike Thomas

Pi Kappa Zeta

"F

or Your
Eyes Only,"
The Men of
BU. This
calendar
produced by
the women
of Pi Kappa

Zeta featured 14 of the campus' favorite men. Besides selling calendars, the Zetas sponsored several school-wide events such as

"The Dating Game" during TWIRP Week, Turtle Follies which opened the spring semester, and

Pat's Hatch following rush and pledging.

Homecoming was a time for the annual alumni luncheon and much hard work by members and beaus — Jimmy Wayne Brown, David Green, Tim Knight, Joe Layton, Ken Shaddox, and Al Stanford on their float entry. Their theme of "Box the Bison" was taken from the movie Rocky and featured a boxing tiger.

Several outings for the Zetas included a spring campout at DreGray, a summer outing at Hot Springs and a Christmas banquet at the Hamilton House. Plans were also made for a 10th anniversary reunion at DeGray Lodge in April. — Wendy McIn-vale

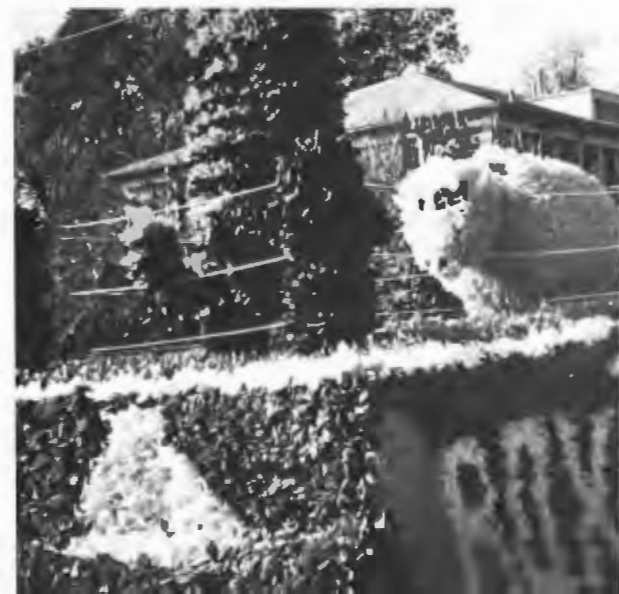


Founded 1973



SIGN BEARERS. Zeta members display a spirit sign during a football pep rally. — photo by Tracy Meredith

"BOX THE BISON". The Zetas express the homecoming theme of motion-mania with their theme taken from "Rocky III." The float





"BARS AND STRIPES FOREVER.
Many hours of practice were required for the Zetas' Tiger Tunes presentation. Dedication to this club project is shown on the faces of Tona Chambers and Kim Wilson. — photo by Ken Shaddox

MEMBERS OF THE PI KAPPA ZETA SOCIAL CLUB ARE: Front row: Tamhra Collyar, Susan White, Karen Zebriskie, Tracy Biggs, Lisa Wallace, Majetta Hundley, Janie Woodall Rebsamen, Anita Smith. Second row: Tammy Stalnaker, Angel Nash, Dana Donaldson, Donna Kelly, Kim Wilson, Nancy Rogers, Renee Burton, Judy Waight. Third row: Phyllis Thomson (sponsor), Lou Ann Green, Kim Doster, Robin McAllistar, Michelle Howard, Scoti Kirkpatrick, Tona Chambers, Cindy Stanford, Sue Richmond, Lisa Clements, Myra Conaway, Joe Layton (beau). Back row: Jimmy Wayne Brown (beau), Tim Knight (beau), Marian Frias, Sherry Gorum, Dena White, Debbie Cockerham, Sonja Clinesmith, Sherrie Martin, Carol Burnett, Lisa Greenwood, Janis Shaddox, Terry Vanlandingham, Cindy Farnam, Wendy Long, Rosemary Chu (honorary sponsor), Al Stanford (beau), Mike Thomson. (sponsor).



Rho Sigma

T

he spirit-leaders, Rho Sigma, or the Red Shirts, as they were called, generated enthusiasm among students with their ever-present cowbells and run-through signs.

Founded 1935

Besides their cowbells and signs, the Red Shirts had even more activity at homecoming. After

the homecoming pep rally, Rho Sigma sponsored a bonfire and torchlight parade. Club members also participated in an all-night bell-ring and vigil at the tiger on the eve of homecoming. The Red Shirts and sweethearts, Beth Garrett, Kristal Johnson, and Lisa Livers, rode high atop a backhoe through the homecoming parade.

Fall was also time for the freshman girls drop-in, and Halloween brought the annual Rho Sigma spook house. Group living received \$200 from this haunted house.

Another Rho Sigma service project was the awarding of the Danny Turner Memorial Scholarship twice a semester. Once each semester the Red Shirts provided a book exchange for all students.

Throughout the year, the Shirts were active in intramurals as well as at football and basketball games and sponsored several off-campus functions. The peak of spring was the emergence of the new red-topped pledges. — Wendy McInvale

OM

UP IN FLAMES. The light parade and bonfire during homecoming week were sponsored by Rho Sigma. Red Shirts carry torches for the parade. Photo by Ken Shaddo.



MEMBERS OF THE RHO SIGMA SOCIAL CLUB ARE: Front row: Steve Quinn, Brian Bunoh, Joe Anderson, Tiger Jordan, Joe Hankins, David Parker, Hugh Donnell, Kenny Lindsey, Aleo Hunter, Clay Price, Tommy Reed, Scott Embry, David Norris. Second row: Gary Arnold, Mike DeLoach, Russell Strickland, Davey Inman, Mark Whatley, Andy Glover, Kirk Lee, Mike Tarkington, Bill Conline, Todd Quik, Doug Thurmon, Monte Gibson. Back row: Bobby Johnson, Spike Dean, Kyle Baird, Keith Long, Paul Au, Jeff Wilson, Kevin Carswell, Steve Evans, Steve Hartlev, Lance Montromery, Todd





READY TO RING. *Dressed in a sheet, Keith Long with cowbell in hand, heads out for a midnight bell-ring at the women's dorms. — photo by Aaron Lynn*

FINAL ADJUSTMENTS. *On the eve of homecoming, Rho Sigma members have an all-night bell-ring. Steve Evans adjusts the bell before taking his position for his term of duty. — photo by David Nash*



Sigma Alpha Sigma

Founded 1932

C

elebrating not only the homecoming win but their 50th anniversary, the men of Sigma

Alpha Sigma honored alumni and members with a banquet at Bowens.

Besides celebrating as the oldest men's club, the S's and sweethearts — Tracy Biggs, Selina Kesner, and Melinda Ingram —

provided several nights of entertainment with the "Grand 'S' Opry" during TWIRP Week, "Saturday Night Live" in the Spring, and off-campus activities throughout the year.

Christmas was the time for the Needy Boys' Christmas party. The party for fourth graders from Arkadelphia was a cookout complete with a visit by Santa Claus. The S's also had a Christmas banquet for members and dates at the Hamilton House and won third place on their window at the SUB Christmas decorating party.

Throughout the year the S's were active in intramurals, serenading, and rush and pledging in the spring. — Wendy McInvale



TRICK PLAY. Sigma receiver, Mike passes the ball after a from quarterback, Jim. Brown. — photo by T. edith



I JUST CAN'T SMILE. As a replacement for Barry Manilow, Alan Moore performs at the Sigma Alpha Sigma Saturday Night Live. A lady from the audience (David Wilcox) enjoys a



READY, AIM, FIRE. The 'S' cannon explosion signals another touchdown for the Tigers. Sigma Alpha Sigma member Clark Easter fires the cannon as Tim Knight plugs his ears. — photo by David Nash



MEMBERS OF THE SIGMA ALPHA SIGMA SOCIAL CLUB ARE: Front row: Joey Cunningham, Cliff White, Mike Maeda, Tracy Biggs (sweetheart), Selena Kesner (sweetheart), Alan Moore, Mark Stallings, Mike Treadway, Tony Gray. Second row: Scott Turner, Chuck Lewis, Tim Knight, Jimmy Wayne Brown, Joe Dan Reed, Jim Freeman, Charlie Ingram, Shawn Patterson, Kevin Frierson. Back row: Jeff Moore, Mike Reed, Chuck Whitlow, Steve Russell, Andy Hill, Tony Chambliss, Matt Porter, Mike Keen, Robert Ward, James Pickens. Fourth row: Rusty Breshears, Tim Wooldridge, David Wilcox, Clark Easter.