

Ouachita Baptist University

Scholarly Commons @ Ouachita

Arkansas Baptist Newsmagazine, 1950-1954

Arkansas Baptist Newsmagazine

7-31-1952

July 31, 1952

Arkansas Baptist State Convention

Follow this and additional works at: https://scholarlycommons.obu.edu/arbn_50-54



Part of the [Christian Denominations and Sects Commons](#), [Mass Communication Commons](#), and the [Organizational Communication Commons](#)

Recommended Citation

Arkansas Baptist State Convention, "July 31, 1952" (1952). *Arkansas Baptist Newsmagazine, 1950-1954*. 93.

https://scholarlycommons.obu.edu/arbn_50-54/93

This Book is brought to you for free and open access by the Arkansas Baptist Newsmagazine at Scholarly Commons @ Ouachita. It has been accepted for inclusion in Arkansas Baptist Newsmagazine, 1950-1954 by an authorized administrator of Scholarly Commons @ Ouachita. For more information, please contact mortensona@obu.edu.

ARKANSAS BAPTIST

BAPTIST OFFICIAL STATE PAPER

VOLUME 51

LITTLE ROCK, ARKANSAS, JULY 31, 1952

NUMBER 30



—H. Armstrong Roberts.

Sunbeam Band Focus Week, August 10-16

The Ministry of the Church to Its Non-Resident Members

By ALLEN W. GRAVES, Pastor
Immanuel Church, Tulsa, Oklahoma

Twenty-six per cent of Southern Baptist church members are non-resident. That is, they live too far away from their home church to participate in its work and worship regularly. Yet, as long as these people keep their names on the roll of the home church that church has an inescapable responsibility to minister to them. We would think parasites heartless brutes who would disclaim responsibility for their children. We believe God is holding his church responsible for those who have united with their fellowship.

Accepting this responsibility for the non-resident members, our first problem is to: **Find Them**

We suggest that a non-resident fellowship committee be appointed immediately in every church. This group, made up preferably of long-time church members, should survey the entire church roll correcting names, addresses, and dividing the roll into resident and non-resident groups as information available makes possible. In many cases the out-of-town addresses will be available for many of the absentee members. In other cases the committee members will know of relatives, friends, and former employers, who can furnish leads for securing of correct mailing addresses for most of the non-resident members.

Write Them

In the light of the Southern Baptist plan for Transfer Church Membership Week, September 14-21, we suggest that a letter be sent to all these non-resident members whose addresses can be secured. This cordial letter should express the continuing concern of the home church for the spiritual welfare of its members wherever they

may be. Encourage them to unite with the Baptist church in the community where they are now residing. Enclose a card or letter to be returned asking specifically about the name and address of the nearest Baptist church and its pastor, whether they have attended or joined there.

In several of the western states the State Secretaries of Missions are asking that these names be sent to them, since, very often, there may not be Southern Baptist churches in the communities. These states and the addresses are found in the leaflet recently distributed to all pastors.

At the time of the special emphasis week, September 14-21, write a second letter to all non-resident members urging that now is the time for them to unite with the local Baptist church. Enclose a copy of the church covenant, circling in red that pledge to unite with another church when one moves from the community.

Don't give up. Keep trying to get addresses for those previously unavailable. Keep the Committee in your church active the year round, working on this problem. Write an additional letter about every three months urging non-resident members to do their Christian duty by transferring their church membership. Ask their relatives and friends to write them urging them to move their membership to a Baptist church close by. Where no Baptist churches are to be found, challenge the non-resident members to organize a new Baptist Church.

After as many as four letters have reached the non-resident members without any positive action being taken, the church may wish to study the advisability of removing these names from the active roll and placing them in a separate group.

Pilate— The Political Opportunist

A Devotion by the Editor

"If thou let this man go, thou art not Caesar's friend."

One commentator aptly remarks that Pilate followed a "second-hand conscience," it was his emperor-conscience. He was more anxious to stand in well with the emperor than he was anxious to do right. He would set his own conscience aside if there was any possibility that his conscience was not in complete accord with the wish and will of the emperor.

And all "second-hand" consciences are as tyrannical as old Tiberius himself. It may be "second-hand" conscience of business, or wealth, or poverty, or pleasure, or illness, or misfortune, or custom, or popular opinion. The tribe is almost limitless. These "second-hand" consciences cajole and entice, they make promises and hold out hopes, they threaten and intimidate; they are unprincipled in their demands and ruthless in their methods. And many millions are whipped into line by their business or professional conscience, their political or social conscience, their material or pleasure conscience, instead of their Christian conscience.

But this "second-hand" conscience always fails one when a "conscience void of offense" is most needed. When one does not want to be held responsible for his deeds, he may wash his hands and deceive himself into believing that the guilt is gone.

If our people today would diligently do that which they clearly perceive to be right; if Christian people would act with promptness and decisiveness upon what they know to be their Christian obligations and opportunities, there would be an unbelievable upsurge in the cause of righteousness and kingdom enterprises.

Pilate's sentence was in large measure dictated by his past misdeeds. There were too many irregularities in his past record to risk trial at Rome.

It is strange how men and women become enmeshed in the tangled skeins of their own misdeeds and are afraid to break themselves away. And so they surrender the Lord and forfeit their own souls rather than acknowledge their guilt or lose face with those whose patronage they crave.

"And his disciples went forth, and came into the city, and found as he had said unto them; and they made ready the pass-over." Mark 14:16.

Do You Want Them?

By LLOYD A. SPARKMAN, Pastor
South Side Church, Pine Bluff

Eleven year old Peggy said to her teacher, "I brought Carolyn with me to Sunday School today. She lives two houses from us and we want you to help us get her Mama and Daddy to come. He's a Baptist, but he fishes every Sunday, and her Mama just stays at home." The teacher got busy and several went into the home with a cordial invitation. The pastor had a visit and prayer in the home. Now the father is enlisted and the mother recently came upon profession of faith and has followed Christ in baptism. They said, "It was the first time anyone really seemed to care."

The laundryman in our part of the city was a fine man. His wife once had been a Methodist and he, a Baptist. Many of our members invited this man to church when he would come for the laundry. One of our deacons became interested in the man and would go visit with him often. The pastor cultivated the friendship of this couple and today the man will testify to the joy he has in the Lord. He came by letter and his wife was baptized. They say our people proved that they were wanted.

It was in 1937 in an Arkansas oil field that we found this tiny old lady about eighty years of age. She lived three miles from the village church. After some hesi-

tation the timid soul admitted she had her letter in her trunk. Finally I persuaded her to look for it. At the bottom of this quaint metal trunk we found a yellow, moth eaten paper. It was a letter from a church near Meridian, Mississippi, dated in 1877. For sixty years, since she was a bride, she had kept that letter. When I asked her why, she said, "Well, I know I haven't done right, but in every place I have lived nobody seemed interested, so I just neglected to join a church."

These simple stories out of my own experiences pin point the real problem: 1. Do we care enough to go after the two million Baptists who have moved, but have not moved their church letters or their allegiance to God? If we get them on our hearts, we can enlist most of them. Many of them are hell bound, and sincere concern on our part will cause them to realize their plight and come to Christ for salvation. 2. Do we see the cost to the kingdom, of idle, worldly, church members whose influence is against Christ and His church? Children, companions, and relatives rest easy in their lost condition because this unaffiliated Baptist in the home shows no sign of God's power in the heart and life.

We can reach them if we want them and go after them in the power of God's spirit.

ARKANSAS BAPTIST

206 BAPTIST BUILDING, LITTLE ROCK
Official Publication of the Arkansas Baptist
State Convention

B. H. DUNCAN EDITOR
MRS. HOMER D. MYERS ED. ASST.

Publication Committee: D. B. Westmoreland, Jr., Walnut Ridge, Chairman; Hugh Owen, Pine Bluff; Walter Hill, Little Rock; James Fitzgerald, Hot Springs; N. E. Griffin, Monticello.

Published weekly except on July 4 and December 25.

Entered Post Office, Little Rock, Arkansas, as second class mail matter. Acceptance for mailing at special rate of postage provided in Section 1132 October 1, 1913.

Individual subscription \$2.00 per year. Church Budgets, 12 cents per month or \$1.44 per year per church family; Family Groups (10 or more paid annually in advance) \$1.50 per year. Subscriptions to foreign address \$2.50 per year. Advertising rates on request.

The cost of cuts cannot be borne by the paper except those it has made for its individual use.

Resolutions and obituaries published at five cents per word. One dollar minimum.

Articles carrying the author's by-line do not necessarily reflect the editorial policy of the paper.

From The Editor's Desk

Shall the Southern Baptist Convention Set Up a Doctrinal Test of Fellowship?

We have discussed this question in two former issues of the *Arkansas Baptist*. We have also published excerpts from the discussion relating to the report of the Committee on Relations with Other Religious Bodies. These excerpts were taken from the other state papers within the Southern Baptist Convention.

What we are attempting to do is to bring an objective study of this question to the readers of the *Arkansas Baptist*. It obviously is essential to maintain our doctrinal integrity and at the same time to maintain our unity as a great denomination. Doctrinal laxity tends toward the weakening of beliefs and convictions; a lack of unity tends toward the weakening of our co-operative effort. These are dangers which Southern Baptists have avoided in the past.

Doctrinal integrity and united effort have produced among Southern Baptists the greatest, most comprehensive, and effective program among evangelical Christian denominations.

Baptism, A Test of Fellowship

We do not believe that the Southern Baptist Convention is going to set up a doctrinal test of fellowship. We do not believe that those brethren who are insisting upon the indoctrination of our people, particularly with reference to the ordinances, want such a doctrinal test set up in our Convention. We do believe, however, that those churches and pastors who depart from the traditional Baptist position on the ordinances to such a degree as to practice open church membership should have enough honor to withdraw from the Baptist fellowship and go their own way rejoicing, if they can.

So far as we know baptism has always been made a test of fellowship in the local Baptist churches. Baptism has been considered the door into the church, and one is received into full fellowship of the church only when he is baptized. We believe this test of fellowship is accepted by all our Baptist churches.

Local Church Practice

However, we doubt if what is known as "open communion" is insisted upon in all our Baptist churches as a test of fellowship. It is doubtful that the majority of our Baptist churches would withdraw fellowship from a member if that member believed in what is known as "open communion." The church is duty bound to undertake to teach such a person the scripture basis for the Baptist belief that only those who are baptized are scripturally privileged to partake of the Lord's supper. The church is negligent in its duty and responsibility if it does not teach the Bible to its membership on this and other questions. However, whether the church should withdraw fellowship from those members

who, in spite of the teaching concerning the Lord's supper, continue to believe in and practice open communion, is another question.

The Southern Baptist Convention is within its rights when it lays emphasis upon the teaching of the doctrines which are held by Baptists and which have made Baptists distinctive through the years. It does lend emphasis to doctrinal teaching in the local churches for the Southern Convention to encourage such teaching.

However, the Committee on Relations with Other Religious Bodies has been so outspoken in its pronouncement on doctrinal issues and has charged that some of our Baptist churches are departing from the traditional Baptist position on the ordinances, that some of our brethren fear that a movement within the Convention to set up a doctrinal test of fellowship may gain such momentum as to become an actuality in the future.

As already stated, both doctrinal integrity and unity in our co-operative endeavor are essential to the progress of the Southern Baptist Convention and the promotion of its program. We believe that Christian patience and forbearance will enable Southern Baptists to find a common ground upon which they can stand together with relation to this question.

Persecution Of Protestants In South America

The Catholic hierarchy of the United States is trying desperately to deny the charges of the persecution of Protestants by Catholics in South American countries and to convince their own people particularly that these charges are groundless.

"Our Sunday Visitor," a popular national Catholic action weekly, published in Huntington, Indiana, in the June 22 issue presents what it calls the "Facts on Charges Catholics Fight Protestants in South America." This publication carries a lengthy article by "an American priest-editor" who declares that "nothing could be further from the truth" than the reports of persecution of Protestants in South America by the Catholics.

However, denials do not erase the ugly facts of such persecution.

In the June 18 issue of the *Christian Century*, we quote the following:

"In the third report to be issued since March of this year, the Presbyterian U.S.A., board of foreign missions lists eleven previously unreported attacks on Protestants in Colombia. The total of cases of violation of religious liberty now on file by the Evangelical Federation of Colombia is 66. All are supported by signed statements of victims, witnesses, or people with first-hand knowledge of these outrages. Violations of religious liberty include murders, destruc-

Recess Appointment To Vatican?

It is reported that a joint House-Senate conference committee has dropped the Preston rider to the State Department appropriation bill barring the use of funds for a mission to the Vatican. The rider, inserted by the House, which would have prevented the use of any funds for the establishment of a Vatican mission, was deleted by the Senate and conferees have agreed to leave it out of the bill.

It appears that this deletion is intended to make it possible for President Truman to make a recess appointment of an ambassador to the Vatican and no restrictions are placed upon the use of funds for establishing such mission if the bill approved by the House-Senate conference committee is passed by both the House and Senate.

Senator Olin Johnston of South Carolina has declared that he will make an attempt to have the rider restored. However, the success of such an attempt is doubtful.

Whatever action the national congress may take to forestall such a recess appointment, we cannot anticipate. Yet we hope that some effective action may be taken to halt this rash, headstrong determination of the President.

Beauty Contests

We heartily agree with Archbishop Edwin V. Byrne of Sante Fe, New Mexico, that "beauty contests are an appeal to the baser instincts of mankind and an incentive to uncleanness in thought and action."

However, we cannot go along with the Catholic bishop who "forbade Catholics to take part in, or assist in staging, a beauty contest scheduled at Albuquerque on July 5." The archbishop declared that Catholics participating in the contest would be denied the sacraments of Penance and of Holy Eucharist.

While we claim no authority such as the Catholic bishop exercised, we deplore the lack of modesty which makes possible such exhibitions as beauty contests. The proprieties and decencies of human society cannot be ignored without serious consequences. Human society is already paying the penalty for the breakdown of the standards of propriety, modesty, and decency and the baser passions and instincts are gaining the ascendancy over purity and morality.

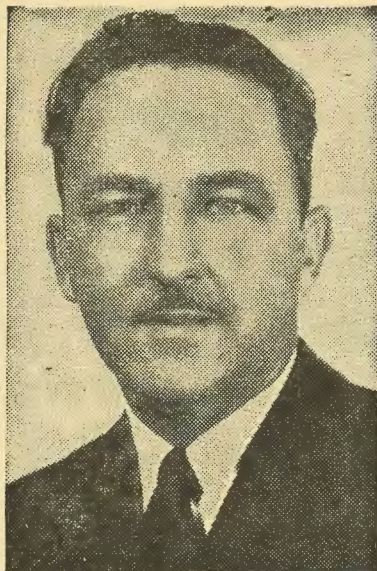
tion of property, assaults on persons, confiscation of Bibles and other books, prohibition of Protestant services, denial of medical treatment and other wrongs."

The persecutions of Protestants by Roman Catholics in Latin America are too widespread and the documentary evidence is too abundant to be brushed off with a simple denial. Only the most gullible of their own people will believe the denials issued by the Catholic hierarchy.

The fact is that suppression by persecution has always been an established policy of the Roman Catholic Church. It is still the policy of the Roman Catholic Church in this our own day when and wherever the Catholic hierarchy feels that it can get by with such persecution.

Kingdom Progress

New Orleans Professor Gets Ph. D. In Edinburgh



DR. C. PENROSE ST. AMANT

Dr. C. Penrose St. Amant, professor of Church History at the New Orleans Seminary received his Ph.D. degree from New College, Edinburgh, Scotland on July 4. Dr. St. Amant already holds the B.A. from Louisiana College, M. A. from Louisiana State University, and the Th.D. from the New Orleans Seminary.

Dr. and Mrs. St. Amant spent the session 1950-51 in Edinburgh, and have spent this summer touring Europe and the Near East. They have travelled by car through Scotland, England, France, Italy, Yugoslavia, Greece, Turkey, Syria, Jordan, Israel, Lebanon, Egypt, North Africa, and Spain.

"My greatest satisfaction in reaching this academic goal is in whatever contribution this Ph.D. degree will make to the strengthening and wider influence of our Seminary," he wrote to President Roland Q. Leavell. "With our missionary and evangelistic fervor and our solid scholarship, I have every confidence in the continued growth and increasingly wide influence of our school." He preached in Nazareth on June 15 to the American group, to the congregation at Nazareth, and to the graduating class at the Baptist school.

The St. Amants returned to America on July 31.

Youth Revival At Charleston

A youth team composed of Tommy Purnell and Rhine McMurry, alternate preachers; Don Moore, music director; Tommy Bruce, pianist; Jack Cowling, booster band director; and Louise Stubblefield, of Charleston, organist, conducted a youth revival at the First Church, Charleston, which closed July 20.

There were nine additions to the church membership on profession of faith and baptism and four by letter. Two young people surrendered their lives for full time Christian service.

The Charleston church is at present without a pastor.

Colorado-Wyoming Churches Organize

By J. W. WEEKS

The Southern Baptist Association of Colorado came into being on July 7, 1952, when messengers from churches in Colorado and Wyoming met in Denver to effect its organization. It represents the first such association to be organized in either of the two states. The charter-churches were: Temple Church, Denver, (D. A. Bryant); Broadway Church, Boulder, Colorado (E. J. Speegle); First Southern Baptist, Colorado Springs, Colorado (W. C. Bryant); First Church, Manitou Springs, Colorado (T. D. Taylor); Southern Baptist Temple, Wheatland, Wyoming (J. B. Milstead); First Southern Baptist, Casper, Wyoming (O. R. Delmar). The association will be affiliated with the Baptist General Convention of Arizona.

In connection with the forthcoming Transfer Church Membership Week, Southern Baptists all over the country can assist the pioneer churches that are making such rapid progress in Colorado and Wyoming by acquainting them with the names and addresses of friends and relatives who are now residents in those states. Experience has shown that there are great numbers of people in the Rocky Mountain area who are hungry for the opportunity for fellowship and service that Southern Baptists provide. Address your information to Rev. L. A. Watson, Supervisor of Missions, 2239 East Colfax Avenue, Denver, Colorado.

Nine Years At Cullendale

Pastor J. Elmer Morgan has been pastor of First Church, Cullendale, for nine years. During this period 944 persons have been received into the fellowship of the church, 482 by letter, 454 on profession of faith and baptism, and 8 by statement. The church membership has grown from 350 to 900.

During the same period, average attendance of the Sunday School has increased from 187 to 445; the number of Sunday School departments have increased from 5 to 18; the number of teachers and officers in the Sunday School has increased from 30 to 141.

The Training Union enrolment has increased from 185 to 414 during the pastorate of Mr. Morgan. The average attendance of the Training Union has increased from less than 100 to 185.

During Pastor Morgan's ministry at Cullendale the church budget has grown from \$5,000 per year to \$36,270. Cooperative Program gifts have increased correspondingly, from \$500 per year to \$5,200. The value of the church property has grown from \$10,000 to \$110,000.

Educational Director H. C. Lowery of the Cullendale Church states, "We are proud of this growth but as we survey our church field, we realize we've not even touched the hem of the garment and even now we are making long range plans to enlarge our facilities and go after the countless prospects for our church."

New President At Golden Gate Seminary



DR. HAROLD K. GRAVES

Dr. Harold K. Graves, newly elected president of Golden Gate Seminary in Berkeley California, has arrived in Berkeley with Mrs. Graves and their two children, Nancy, age 15, and Keaster, age 11. Dr. Graves who for the past six and one-half years has been pastor of First Church, Bartlesville, Oklahoma, was elected to head Golden Gate Seminary, one of five Seminaries of the Southern Baptist Convention, during the recent meeting of the Trustees of the Seminary at the Southern Baptist Convention in Miami, Florida. President Graves succeeds Dr. B. O. Herring, who resigned the presidency of the Seminary in March to accept the presidency of Grand Canyon College in Phoenix, Arizona.

Dr. Graves, a native of Tennessee and Illinois has been pastor of the Bartlesville church since 1945. During his eleven years as a pastor he has been very active as a leader in denominational work, having served as a member of the board of directors, and later as president of the Baptist General Convention of Oklahoma. He is a member of the Board of Trustees of both the Oklahoma Baptist University and the Southern Baptist Seminary in Louisville, Kentucky. His record of achievement as a denominational leader and scholar is outstanding. Dr. Graves assumes the presidency of the Seminary at a time when its enrolment has been the largest in its history. To accommodate an even larger enrolment this Fall, the campus, located in downtown Berkeley is seeing many changes in the physical plant. Enlargement of the library, larger and more classroom space, added dormitory facilities and remodeling of the Chapel are but a few of the many signs of an even greater student body.

A graduate of Southern Illinois University, President Graves received his Th.M. and Th.D. degrees from the Southern Baptist Seminary in Louisville, Kentucky, and an honorary LL D degree from Oklahoma Baptist University.

Dr. Graves and his family will reside at 874 Centra Costa Avenue in Berkeley, California.

—000—

"Blessed is the man who loves his own Church enough to praise it." —Copied.

Arkansas News Briefs

From Here and There

Montrose Church and Pastor Noel Barlow will have the services of Pastor Homer Bradley, Matthew Memorial Church, Pine Bluff, in revival services from July 28 to August 6.

Pastor Ernest Baker, Ward, reports a successful Vacation Bible School at First Church, Ward, where 85 were enrolled with an average attendance of 64; 25 maintained perfect attendance records, and there were six professions of faith.

Pastor Paul Pearson did his own preaching in a revival meeting in the Centerville Church, Dardanelle-Russellville Association, July 6-16. Miss Ella Mae Moody of Ward was pianist and also worked with the young people. There were two additions to the church on profession of faith and baptism, and one by statement.

Lonnie Lasater, West Side Church, El Dorado, will assist First Church, Hampton, in a revival campaign from August 10-17.

Caudle Avenue Church, Springdale, and Pastor Roe Matthews sponsored a Vacation Bible School at the Labor Camp recently. The enrolment was 198; average attendance was 130; there were 24 professions of faith.

—000—

Pastor Williams Resigns Highway Church

Pastor L. W. Williams has resigned the pastorate of the Highway Church of the Pulaski County Association. Pastor Williams has not announced his future plans.

He came to the Highway Church on April 20, 1950. His work there was closed on June 29 of this year.

During his ministry at the Highway Church, 77 persons were received into the fellowship of the church. Church facilities were greatly improved. These improvements include the installation of city water and natural gas.

Six Sunday School rooms were added, also an assembly room, and a modern kitchen. These improvements were made without incurring a debt. A movement is now under way to construct a baptistry and \$200 in cash is already on hand toward the accomplishment of this project.

It Happened In Arkansas

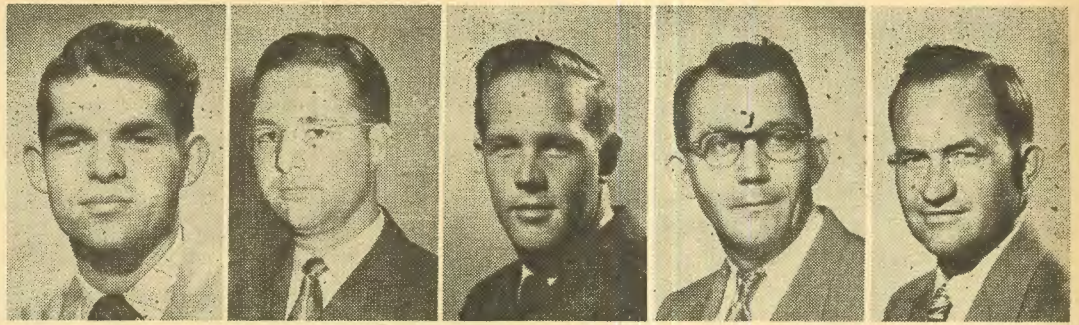
Did you ever hear of a church so crowded that the walls actually bulged? Well, there is a church in Arkansas that was so crowded that they actually tore out one side wall and extended the church auditorium capacity by building a brush arbor attached to and on the side of the church.

This happened in a revival meeting June 30 to July 10 at the Half Moon Church near Clinton, in the Stone-Van Buren-Searcy County Association. Pastor Thurlo Lee of Browns Chapel Church near Manila was the visiting evangelist assisting Pastor Thomas Simmons and the Half Moon Church in the revival.

There were 35 additions to the church, 25 coming on profession of faith and baptism, and 10 by letter and statement. Among those received into the church membership were 13 men who were heads of families.

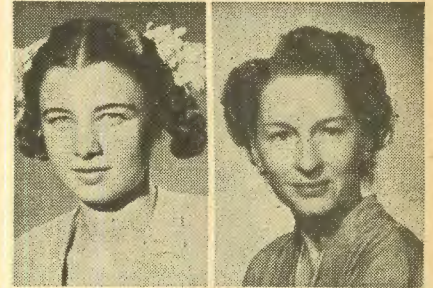
The foundation for a new church building was laid during the revival meeting. The Half Moon Church is situated in a rural community.

Arkansas Summer Graduates, Southwestern Seminary



First row, from left to right: J. R. Stuckey, Kiblah, B.D.; C. G. Cornell, Little Rock, B.D.; C. R. McPherson, Lake Village, B.D.; A. C. Rudloff, College City, MRE; William E. Woodson, Ola, MRE.

Second row: Mrs. G. E. Travis, Malvern, BRE; Mrs. W. R. Mizell, Arkadelphia, MRE.



Deacons Ordained

Eugene Mosby, Dorris Cox, Ira Hartness, Cecil Crews, and Charles Hardcastle were ordained as deacons by First Church, Piggott, Sunday afternoon, July 20.

Pastor E. Clay Polk of the Piggott church served as chairman of the ordaining council and H. W. Johnston, associational missionary, as clerk. E. G. Ward, a deacon of First Church, Piggott, led the examination; R. L. Shell, pastor of First Church, Malden, preached the ordination sermon; Lonnie Doucet led the ordination prayer. Dr. F. H. Jones, a deacon of the Piggott church, presented the certificates of ordination to the newly ordained deacons and welcomed them into the fellowship of the board of deacons.

Books Received

Bible Characters

Authors, Dwight L. Moody, T. DeWitt Talmage, Joseph Parker Price \$3.95
Publisher: Zondervan Publishing House

Great Missionaries To India

Author, J. Theodore Mueller Price \$1.50
Publisher: Zondervan Publishing House

Spires Of The Spirit

Author, Frederick Brown Harris Price \$2.00
Publisher: Abingdon-Cokesbury

The Faith Once Delivered

Author, Clarence E. Macartney Price \$2.50
Publisher: Abingdon-Cokesbury

Keys To Richer Living

Author, L. L. Dunnington Price \$2.00
Publisher: The Macmillan Company

Meditations and Verse

Author, Ralph S. Cushman Price \$1.25
Publisher: Abingdon-Cokesbury

Contributions For Storm Torn Churches

Church & Pastor	Contrib.
Bentonville, James Overton	\$ 29.50
Beech Street, James Harris	346.15
Decatur, Robert Parker	24.50
Lake Street, J. H. Grey	10.00
Gum Springs, Floyd Parnell	10.00
Concord, pastorless	25.00
Lonoke, J. T. Holston	23.00
East Point, W. A. Pruitt, Jr.	10.40
Blytheville, E. C. Brown	98.95
Bethel, Earl Humble	106.00
Rocky Mound, R. F. Eaton	25.00
Dyer, Claud Smith	30.00

—000—

The motto of the Baptist World Alliance is "Every Baptist a Missionary." Missionaries at home, of course. But the Commission reads "into all the world." We can go by proxy when we support our foreign mission program.

—Brougher P. Maddox.



Listen to The

BAPTIST HOUR

DATE: August 3

SPEAKER:
Dr. J. D. Grey

SUBJECT:
"When Will Christ Return?"

ARKANSAS STATIONS

- KELD, El Dorado, 2 p. m.
- KENA, Mena, 2 p. m.
- KDES, Paragould, 10 a. m.
- KUOA, Siloam Springs, 4:30 p. m.
- KOSE, Osceola, 5:30 p. m.
- KUMA, Magnolia
- KOTN, Pine Bluff, Sat., 8:30 p. m.
- KRLW, Walnut Ridge.

Consult local paper for time.

For Sale—\$450

One 1,000 gallon butane tank, slightly used. Excellent for church or school. Reason for selling — converting our church to natural gas.

Contact: Rev. R. J. McMillan
First Baptist Church
Jacksonville, Ark.

News From Baptist Press

Facts Of Interest

Arkansas and Southwide Gifts

Arkansas Baptists have given \$275,929 through the last of June this year for the support of Southern Baptist Convention causes and agencies, including \$173,250 through the Cooperative Program and \$102,679 in designated gifts.

Their gifts for the first half of 1952 are an increase of \$69,178 over the total for the same period last year, according to the financial report from the office of Porter Routh, executive secretary of the Executive Committee in Nashville.

Arkansas's gifts in June this year totaled \$30,239 with nearly \$27,000 of it going to the Cooperative Program. The Cooperative Program total for the six months is over \$55,000 more than last year's gifts for the first half of the year.

Southern Baptists have given over \$1,250,000 more this year to the Convention's mission and benevolent causes through the Cooperative Program and designated gifts than they had at the end of the same period last year.

Total gifts to Convention-wide causes jumped 16.9 per cent during the first half of this year with the June 30 financial report reading \$8,671,445 as compared with \$7,414,129 last year.

The Cooperative Program receipts went up 13.52 per cent or from \$3,916,975 last year to \$4,446,433 this year. This year's total in designated gifts, \$4,225,011, is an increase of 20.8 per cent over the first six months' designated gifts last year.

June's receipts in the Nashville office, a total of \$965,244, include more than \$800,000 through the Cooperative Program. At the close of the June report, the receipts were very near the \$4,500,000 mark which provides for the operating budget funds. When that amount is reached, receipts then go to the capital needs funds, the second section of the Cooperative Program budget.

Texas Baptists Begin Fund To Aid Western Building

Texas Baptists have taken steps to establish a \$2,500,000 loan fund to aid Southern Baptist churches in ten western states in the construction of new buildings.

The Texas move comes almost simultaneously with the launching in Atlanta, Georgia, of a special fund of \$500,000 to be added to the existing \$2,250,000 loan fund of the Home Mission Board of the Southern Baptist Convention.

The two funds will provide over \$3,000,000 exclusively for buildings in the West and Northwest.

A special meeting of the Texas executive board set up steps to reach their objective as follows: (1) promoting a campaign in September among the state's one million Baptists to raise a million-dollar loan fund; (2) setting up a corporation to handle the loans.

Several anonymous laymen have agreed to lend a total of \$500,000 themselves when the million dollars from the Baptist General Convention of Texas is raised. The Baptist Foundation of Texas also agreed to buy one million dollars in bonds to be issued by the corporation.

The Texas group's action was highly significant in that such an extension program would nominally be considered a denominational job.

As a new congregation does not qualify ordinarily for commercial loan, the Texas convention named a committee in June to study what could be done to help promote Southern Baptist work in the ten states. The committee recommended that action be taken at once, delegating the direction of the new corporation to the convention's Church Loan Association, a new agency set up this year for helping struggling churches within the state. Dr. A. B. White, Dallas, is executive secretary of the Loan Association.

Details of handling loans are being worked out by Texas leaders and those representing the western states. Leading in representing the west are Dr. R. E. Milam, Portland, Oregon; Willis J. Ray, Phoenix, Arizona, and S. G. Posey, Fresno, California.

President Grey To Speak Abroad

Dr. J. D. Grey, president of the Southern Baptist Convention, will spend the month of August on a speaking tour of several foreign mission fields.

The Convention president will be in Copenhagen, Denmark, August 4-8, for a meeting of the Executive Committee of the Baptist World Alliance, of which he is a member. Following this meeting he will go to Germany, where Dr. Jacob Meister, president of the Baptist Union of Germany, has invited him to visit the Baptists of Germany and to speak in their churches.

On August 18, Dr. Grey will fly from Berlin to London, the next day from London to Lagos, British West Africa, and then to Ogbomosho to preach at the Annual Pastor's Conference which will meet for one week at the Baptist seminary there.

President Grey will then fly to Recife, Brazil, to participate in a program of Baptist work with Dr. F. Townley Lord, president of the Baptist World Alliance. He will return to New Orleans on September 3.

Dr. Grey's travel expense will be paid by the First Baptist Church in New Orleans, of which he is the pastor.

000

Membership Of Churches In Southern Baptist Convention—1951

Southern Baptist Convention	7,373,498
Alabama	554,589
Alaska	1,298
Arizona	14,257
Arkansas	248,080
California	40,963
District of Columbia	30,210
Florida	297,161
Georgia	702,382
Illinois	108,848
Kansas	8,429
Kentucky	547,945
Louisiana	303,445
Maryland	30,943
Mississippi	399,519
Missouri	360,194
New Mexico	50,219
North Carolina	719,518
Oklahoma	351,358
Oregon	2,858
South Carolina	398,184
Tennessee	627,748
Texas	1,220,172
Virginia	352,612
Washington	2,566

Dr. T. B. Lackey, executive secretary of the Baptist General Convention of Oklahoma, has notified the Sunday School Board that the Convention's Board of Directors have agreed to underwrite \$50,000 for the construction of the first unit of **Oklahoma Hall** to be erected at the Glorieta Baptist Assembly.

Mrs. K. O. White, wife of the pastor of the First Church, Little Rock, was seriously injured recently enroute to Ridgecrest where Dr. White was scheduled to speak at the Training Union Conference. Details are not available, except that she will be hospitalized for some time.

Dr. Ralph A. Herring, pastor of the First Church, Winston Salem, N. C., has submitted his manuscript for **Studies in Philipians**, which is to be the text book for January Bible Study Week in 1953; 300,000 copies are to be printed and made available through the Baptist Book Stores early in November. Approximately 400,000 people participated in the January Bible studies last January.

Early in July, First Church, Columbia, S. C., celebrated the fifth anniversary of its pastor, Robert E. Naylor. In the five years there were 2,154 additions, and total receipts of \$893,395.08. Present membership is 3,307.

Statistics released last week by the Brewing Industry reveal that 83,718,067 barrels of beer were sold in 1951, or 17.1 gallons for every man, woman and child in the U. S.

President Truman signed an appropriations bill last week giving the military services \$46,610,938,912 for their operations during the next twelve months, which is 25 times greater than the total receipts of all denominations for all purposes in 1951.

The liner **United States**, queen of the seas, shattered all records on July 7 by crossing the Atlantic in 3 days, ten hours, and forty minutes, with an average speed of 35.59 knots, and beating the previous record by 10 hours and two minutes. Its "larder" for 1,700 passengers included: 123,811 pounds of meat; 3,800 pounds of butter; 5,820 dozen eggs; 48,000 pounds of "spuds"; 28,000 bottles of alcoholic beverages; and 31,000 bottles of soft drinks.

Five hundred Baptist messengers met in the little town of Chilson, Korea, April 30-May 6, for the annual meeting of the Korean Baptist Convention. During the past year the number of Baptist churches in South Korea increased from 40 to 112. A vote of thanks was given to Southern Baptists for sending relief and missionaries, and a request was renewed for new missionaries at the earliest possible time.

Christianity has grown from 500,000 in 100 A. D. to an estimated 742,000,000 in 1952. Non-Christian religions total approximately 1,576,900,000, as follows: Jews, 15,600,000; Mohammedans, 315,000,000; Animists, 160,000,000; Buddhists, 170,000,000; Confucianists and Taoists, 350,400,000; Hindus, 255,000,000; Shintoists, 90,000,000; others, 220,900,000.

In a survey of 165 major business concerns to determine the employment fitness of high school graduates it was revealed that high schools are turning out graduates deficient in spelling, arithmetic, and writing. More than 60 per cent of the employers said the graduates expected "too high a starting salary and too rapid promotion." Eighty-four per cent said they found a "satisfactory willingness to work."

—Survey Bulletin

Church Music Department

MRS. B. W. NININGER, Director

On To Music Camp

We're off to MUSIC CAMP the 18th of August Off to MUSIC CAMP at Ferncliff so fair

We'll work and play together, like all young Christians Come, my comrades, let's meet you there.

Bring your clarinet, your fiddle, and flute

Bring your manners too, and voices in tune,

So, on to MUSIC CAMP to learn, play and worship

You'll be glad to join us there soon.

This sprightly song calls all Baptist Young People to the FIRST YOUTH MUSIC CAMP ever planned for them. Everything possible has been arranged to make this a never-to-be-forgotten experience for all who attend. Five wonderful days of work, worship, and play awaits Juniors, Intermediates, and Young People; at Ferncliff, August 18-22. Instrumental music, both orchestral and piano, singing, dramatics, recreation, good food and handcrafts are some of the delectable items on the musical menu. As special treats

there will appear each night a visiting attraction for your enjoyment.

Faculty includes, W. A. Herring, camp pastor, Alden Peterson, Miss Arvine Bell, Mrs. W. A. Herring, Jack Ballew, Miss Gloria Hink, Miss Irma Helen Hopkins, Miss Odessa Holt, and Mrs. B. W. Nininger. Misses Margaret Hatfield and Betty Godley, both graduate nurses, will be on hand for first aid.

Churches must provide a counselor for every 10 people registered. Bring your Bible, also bed linens, towels, blanket, soap, notebook, pencil; your orchestral instrument or a harmonica, tennis racquet, baseball glove, bat and ball, swimming suit, rainclothes, sweater, and comfortable clothes and shoes. If you have any costumes, bring them.

We must know at once if you are coming to Camp as accommodations are limited. Send in \$1 as your registration fee today to Mrs. B. W. Nininger, 212 Baptist Building, Little Rock, Arkansas. Balance of \$12.50 to be paid upon arrival. ON TO MUSIC CAMP!

Drunken political leaders and drunken voters have led the nation into a cesspool of Communism.

—000—

Blessed are the meek; they do not get ulcers.

—000—

Today's men of distinction are tomorrow's welfare cases.

—000—

Religion is the last citadel of civilization.

WAYLAND College

4-years Accredited...
High Academic Standards...
Positive Christian Program... Art,
Music, Business, Speech, Homemaking,
Religious Journalism...
Costs Reasonable...
write THE REGISTRAR... PLAINVIEW, TEXAS

Central, Jonesboro, Loses Honored Member

Dr. O. H. Johnson, optometrist, and a member of the Central Church, Jonesboro, was claimed by death on June 24, at the age of 72.

Dr. Johnson had been a mid-south leader in the field of optometry for nearly 40 years. He was a former president of the Arkansas Optometry Association and the Arkansas Board of Optometry. At the time of his death he was a member of the board of trustees of Southern College of Optometry.

Always an active church worker, Dr. Johnson was a charter member of the Central Church. He was on the board of deacons and associate Sunday School superintendent.

Has Dancing A Rightful Place In The Church?

By L. P. THOMAS, Pastor
First Church, Leslie

In the July 8 issue of the Arkansas Gazette there appeared an article by Dr. John W. Rustin, pastor of Belmont Methodist Church, Nashville, Tennessee, who is platform speaker at Hendrix College for the annual session of the school for ministers.

In this particular lecture, Dr. Rustin said, "Dancing can have its place in the church, and can be used for the glory of God." Well, if dancing can be used for the glory of God, I think it is time for it to take on such reform; because in all the ages past dancing has been found in the worldly social group, and too often in the underworld group of people. I have never yet known the dance to make one single contribution to the spiritual uplift of the church, nor an individual, to the love and harmony of a man and his wife, nor to the building and maintaining of a good Christian home, but has spelled the downfall of countless numbers.

I have been a pastor and evangelist for thirty-three years; and I have never known even one consecrated Christian dancer, nor a dancing soul winner. Dancing lives exclusively on sex appeal. Separate the men and women on the dance floor, and the dance will die.

Dancing never creates, nor stimulates worshipful impulses, but rather detroys them.

In his reference to his tap dance class in his church in Washington, he mentioned a dozen of his "toughest girls," from his dancing class, singing in his Christmas choir. Didn't say anything about any of them becoming Christians. Who wants a dozen prostitutes singing in his church choir, whose purpose is to worship God in song.

It all adds up to this inevitable conclusion—the more worldly attractions we bring into our church life, the less attraction will the church have for God and righteousness.

Oh God! Save the churches from the blighting, demoralizing, damning influence of such evils, and give us a ministry that knows and loves the Lord.

Figures To Inspire

Sunday, July 20, 1952

	S.S.	T.U.	Ad.
Little Rock, Immanuel	1338	439	4
Including Missions	1503	518	7
Fort Smith, First	1302	590	7
Including Missions	1449	618	
El Dorado, First	933	182	5
Including Missions	1042	233	7
No. Little Rock,			
Baring Cross	875	306	6
Including Mission	946	335	7
Little Rock, Second	781	188	8
Pine Bluff, South Side	654	250	5
Fayetteville, First	597	197	2
El Dorado, Immanuel	587	317	1
Including Mission	640	362	
Benton, First	579	98	2
Including Mission	667	145	
Texarkana, Beech St.	570	238	1
Camden, First	563	145	
Including Missions	892	357	
Forrest City, First	533	213	3
Little Rock, Tabernacle	522	193	2
Paragould, First	519	221	
Including Missions	700	345	
McGehee, First	490	151	1
Including Mission	644	224	
Crossett, First	484	158	
Hope, First	462	118	2
Warren, First	454	94	
Siloam Springs, First	448	280	
Hot Springs, Park Place	447	150	3
Hot Springs, Central	444	164	1
Fordyce, First	436	183	
Cullendale, First	435	208	
El Dorado, Second	430	191	4
West Helena	420	123	1
Little Rock, So. Highland	416	142	3
Pine Bluff, Immanuel	413	196	4
Paris, First	406	101	
El Dorado, West Side	401	126	
Rogers, First	390	149	3
Including Mission	493		
Stuttgart, First	389	162	1
Including Mission	428	175	
Texarkana, Calvary	375	175	35
Hot Springs, First	347	126	3
Smackover, First	334	115	
Monticello, First	318	136	
Jonesboro, Walnut St.	313	82	
No. Little Rock, Park Hill	312	125	1
Mena, First	302	103	
Including Mission	339		
Hot Springs, Piney	273	180	3
Jacksonville, First	266	110	
Including Mission	301		
Norphlet, First	259	171	3
Paragould, East Side	233	127	6
Alma, First	228	109	
Pine Bluff, Second	226	91	
Including Mission	235		
Springdale, Caudle Ave.	225	118	5
Bentonville, First	225	53	
Including Mission	283		
Crossett, Mount Olive	224	114	
Gurdon, Beech St.	220	108	
North Little Rock, First	203	64	2
Star City, First	196	71	
Nettleton	150	84	
Pine Bluff, Bethel	146	95	1
Bauxite, First	303	144	
Almyra	144	108	
Magnolia, Immanuel	95	54	1
Hot Springs, Grand Ave.	94	46	
Hot Springs, Emmanuel	46	31	

—000—

"If you think too little, you will talk too much."

—000—

"The unhappiest person is the one who has run away from duty."

—000—

Some people grow up—others just puff up.

CHURCH PEWS

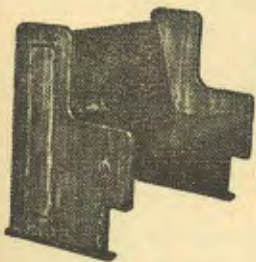
At a Price Any Church Can Afford

Write or call:

WAGONER BROTHERS
MANUFACTURING CO.

Phone 246

BOONEVILLE, ARKANSAS



Lease-to-Own-Plan For 16mm. Sound Projectors

Can You Believe It?

For as low as \$12 per month you can have a good used 16mm. Sound Projector.

No down payment. If you lease it for 2 years it can be yours. We service the Projector for 2 years free.

For Details Write:

ALL-STATE SUPPLY CORP.

Paul H. Power, president

1401 W. Capitol Ave.

Little Rock, Ark.

Sunday School Department

DR. EDGAR WILLIAMSON, *Secretary*

Mail Your Bible School Report Now!

Vacation Bible School Reports are being received in large numbers. However, many schools have not reported to this office. Vacation Bible School Goal, "702 in '52". Aim, a report from every school held in Arkansas this year. We need the information that your report will give us—we need your help in attaining the goal. Don't delay—mail your report today.

Report blanks will be sent upon request. Write to your State Sunday School Secretary for these blanks.

The following departments and classes qualified for Standard recognition in June.

Intermediate Department: Immanuel, Little Rock, Mrs. J. A. McKoin, Department sup-

erintendent.

Intermediate Class: First, Fayetteville, Mrs. Dale Bradford, teacher.

Nursery Departments: First, Fayetteville.

Nursery No. 1—Elnora Cox, superintendent.

Nursery No. 2 — Mrs. Robert Thomas, superintendent.

Nursery No. 3 — Janita Cherry, superintendent.

COMING EVENTS

SEPTEMBER 2-3—Associational Sunday School Leadership Conference.

SEPTEMBER 16—State - wide Special Associational Planning Rallies.

OCTOBER 13-14—State Sunday School Convention, South Side, Pine Bluff.

A Beautiful Life In Korea

By JOHN A. ABERNATHY

As you are thinking of mission and relief work in Korea, let me tell you a story you'll never forget and always be glad you had a part in bringing spiritual and physical joy to these people.

One day Deacon Chun said to me, "There is a refugee girl from our old home in North Korea whom I wish you could hear sing." "Where is she?" I asked. "Living in a refugee hut with many other people in a suburb of Pusan," was his reply. A few weeks later at the Sunday morning service a girl came to the platform to sing a solo. She was slight of build, her clothes almost threadbare, but she held her head erect and had a smile that clearly told that she was one of the King's daughters and had nothing to be ashamed of. It was a common old hymn, "The God of Abraham Praise," but as the words and melody poured from her throat I thought I'd never heard sweeter music. What I'd thought as just an ordinary old hymn became like music from heaven. The words took on a new and real meaning. All who heard were blessed. After the service I asked, "Who is this girl?" and was told by Deacon Chun that it was Miss Han the refugee from his home town. Said I, "I must talk with her and find out something of her life history." Soon I was talking with her. In a modest voice she said, "My name is Han Pok Son." "Tell me something about yourself," I said. This is the story she told:

"My home is in Won San. I finished high school over two years ago. My mother and brother are dead. My father was able to escape but I don't know where he is, or whether he is alive. I escaped, and with other refugees made my way to Pusan." Upon further questioning I learned that her

father escaped before communist soldiers came to his home to take him. Angered at this they bound her mother and brother, took them out and shot them before her eyes. God helped her to escape their hand and live to tell this story.

It was plain that Miss Han was undernourished. Her only clothes were threadbare. She was a real Christian but had not been baptized. When we came to know her better we learned she was anxious to be baptized and unite with our church. Not long after, she was baptized in the placid sea near Pine Island beach. Later we found it was her burning desire to go to college where she could take special training in voice and music to better serve the Lord and her church. She was approved by our relief committee as worthy of help from Baptist relief funds. A college girl ought to have decent clothes to wear. Mrs. Ahn, the pastor's wife, opened some relief packages, some you sent, and selected suitable clothes for Miss Han. She looked almost like an American college girl as she went happily on her way to Ehwa Women's University here in Pusan. She sings in our church choir and renders solos which are always enjoyed.

This is only one of many true stories describing Baptist mission and relief work in Korea. Over 200 college and high school boys and girls are studying today because of Baptist relief funds. We feel it a good investment. It is to these young people we are looking for future leaders in our churches. Thank you ever so much for your interest in Korea and the work of your missionaries. God is doing a marvelous work in saving lost people here.

Can You Afford—

\$1000

—For A Year In

College?

IF YOU CAN'T . . .

Then you ought to investigate Southern Baptist College. It is the only denominational college in the South where the rates are less than in the tax supported colleges and universities. Fees are only \$83 per semester with room and board for as little as \$135. (Special reduction is also given ministerial students on fees.) This is approximately \$175 per year less than the average state school and more than \$350 less than the average charged by denominational colleges.

Southern tries to hold the cost of Christian education down to the lowest possible point. It is our desire to make a college education available to EVERY Baptist boy and girl in Arkansas and the entire mid-South.

MANY FIELDS OF TRAINING . . .

No college offers more types of training. Southern offers full Liberal Arts College training plus many types of vocational training in technical fields. She is also approved for Teacher Training work and her credits have been accepted all over America without reduction. Southern is opening a Rural Theological Seminary for men who may wish to work in the rural churches and to serve as associational missionaries.

FALL TERM OPENS SEPTEMBER 8

Write for Catalogue

SOUTHERN BAPTIST COLLEGE

H. E. Williams, President,

Walnut Ridge, Arkansas

Brotherhood In Larger Perspective

By NELSON F. TULL, *State Secretary*

"A MILLION MEN FOR CHRIST" has been the battle-cry of Brotherhood for many years. This means a million Baptist men, ENLISTED in all the work of their church and denomination, and WORKING HARD with all they are and have, to advance ALL the causes of the Kingdom through their church and denomination.

It has always been a difficult task to re-enlist God's men in God's work after years of idleness; yet re-enlistment is one of the major aims of Brotherhood. As long as a Baptist man is living he ought to be at work for the Savior.

Of course many of God's men have never really been enlisted. They were saved back yonder years ago when they exercised "repentance toward God and faith toward our Lord Jesus Christ." But they never discovered their Christian responsibilities, (perhaps were never given anything to do); or they never comprehended that they, personally, could do anything much to set forward the work of their church.

How different is the life of a Christian who is enlisted when he is saved, and provided continuing opportunities to grow and develop into Christian maturity!

Brotherhood work in its larger perspective, includes both re-enlistment and enlistment. And that brings us to the purpose of this article.

Some years ago, Ivyloy Bishop, Royal Ambassador Secretary of the South, spoke these words: "The Brotherhood seeks a million men for Christ. I'll tell you how you can get them: Get a million boys for Christ and grow them into a million men for Christ."

What an idea!

Our churches ought to endeavor to WIN every boy in their church field to Christ; ENLIST those boys; TEACH them the work of God while they are growing up; TRAIN them in Christian service while they are growing boys; thus HOLD them for God's work throughout adult life. If this is done, then ENLISTMENT rather than RE-ENLISTMENT will be-

come the Brotherhood major.

The Executive Board of the Arkansas Baptist State Convention in its recent budget planning meeting voted to recommend to the Convention an increased allotment of funds for the work of the Brotherhood department. This increase will be used to secure the services of a competent layman who will promote Brotherhood work among young men, and who will also help with the promotion of Royal Ambassador work throughout the state.

This DOES NOT mean that the Brotherhood is taking over the work of the Woman's Missionary Society among the boys. Far from it! It means that the Brotherhood Department is going to work with the Woman's Missionary Society to help them promote the Royal Ambassador program as it is.

Every church in Arkansas ought to have a Junior Royal Ambassador chapter. Every Baptist Junior boy in the state ought to be a Royal Ambassador.

Every Baptist Intermediate boy ought to be enlisted in an Intermediate Royal Ambassador chapter. Every Baptist church in the state ought to provide its Intermediate boys the opportunity.

Every young Baptist man, 17 to 24, ought to be a member of a Young Men's Brotherhood; and thus, in the later years of adolescence, begin to carry a heavier cross for the Lord, and accept responsibilities as a man in the Kingdom of God.

Every adult man ought to have full opportunity to work for the Lord through his church, throughout adult life.

So Brotherhood, in its larger perspective, must include the enlistment of boys, and their growth and development in Christian concepts and Christian service, on up through the years of adolescence into and through adult manhood. The Brotherhood movement which shall comprehend both boys and men, and with a program of work correlated in all its parts and integrated into one grand whole.

Do you believe it?

Woman's Missionary Union

MISS NANCY COOPER, *Executive Secretary*

Annual Season Of Prayer For State Missions

No more important date appears on the W. M. U. calendar than the observance of the Season of Prayer for State Missions. Recognizing the great strength and power released by intelligent praying: offering expression for impression, the three special seasons of prayer—i. e. Week of Prayer for Foreign Missions, Week of Prayer for Home Missions, and Season of Prayer for State Missions—have become a great impetus in denominational life. After concentrated consideration of the fields opportunity is given for special gifts for the extensions of the Kingdom in that particular area. Dr. M. T. Rankin, secretary of the Foreign Mission Board, has referred to them as "Channels of Compassion." If God's people have compassion, the channels must remain clear!

The date for the 1952 Season of Prayer for State Missions is September 15. The Dixie Jackson offering for State Missions will be taken at that time. The goal is \$17,500, slightly less than last year's contributions and much lower than our gifts should be. Remember the expanse of Arkansas. Remember that three-fourths (yes, three out of four) of our school children are not enrolled in any Sunday School anywhere. Remember that it takes money, lots of money, to supplement pastors' salaries in destitute locations, to build churches in communities where there are none and where Christian forces must be mobilized and led to support Kingdom work. THIS OFFERING IS NEEDED! PLAN TO GIVE THIS WORK ITS RIGHTFUL PLACE IN YOUR GIVING! MORE — REMEMBER TO PRAY FOR ARKANSAS BAPTIST MISSION WORK!

Soon special materials prepared for the observance of the season will be mailed to the various organizations.

Set the date of observance. Guard it! Advertise it! Make prayerful preparation.

SEASON OF PRAYER FOR STATE MISSIONS, September 15, 1952. A "Channel of Compassion" to undergird and extend the work afforded through the Cooperative Program, the main support of state missions.

PRICES ARE ADVANCING!

That's not news any longer! An advance in the subscription rate on the W.M.U. periodicals has been delayed just as long as possible. During last year the magazines cost more than the subscription rate. That could not continue, of course. Increased costs of materials and production caused it. However the magazines are better, and we would not have their quality reduced in any way! Effective October 1, 1952, the subscription rate will be increased to \$1.50 on each of the W. M. U. magazines.

Until the above date, renewals will be accepted, and new subscriptions as well, on the old rate of \$1 per year. Are you a subscriber? Have you delayed sending your \$1 for renewal? NOW IS THE TIME TO GET A BARGAIN! (Now, women, I know your weakness, being a woman. Let's take advantage of this REAL bargain.) Remember the W.M.U. periodicals are:

Royal Service for W.M.S. and B.W.C.

The Window of Y.W.A. for young women.

World Comrades for girls' auxiliary members and Sunbeam Band folks.

Ambassador Life for the boys. The magazines contain wonderful articles on mission work, programs for the particular organizations, suggestions for officers and leaders. They are a bargain! Send subscriptions accompanied by remittance of \$1 per year (and stating whether a new or renewal subscription) to:

Woman's Missionary Union,
Birmingham 3, Alabama.

YOUNG PEOPLE RESPONDED

Response to the young people's camps being held at Ferncliff has been most gratifying. The Junior and Intermediate R.A. Camps were high days in the life of each person attending. Pastors from every section of our state gave generously of their time and leadership abilities. Missionaries and nationals shared experiences. Blessings were manifold. The boys attending the Junior R.A. Camp gave a mission offering totaling \$179.22 and designated it for the Cooperative Program. The older boys are still in session.

A large registration has already been received for all the camps planned for girls, with the week of August 4-8 already filled for Junior girls, but with space available August 11-15.

ACCORDIONS

FAMOUS ITALIAN MAKES
Available to Students, Teachers, Christian Workers and Missionaries at
SPECIAL DISCOUNTS
Write Today for FREE Literature
Accordion Manufacturers & Wholesalers Outlet
Dept. AK, 2003 W. Chicago Ave., Chicago 22, Ill.

Seminary Training

Full theological seminary training with major emphasis upon rural, small town churches and associational mission work. Well trained and sound faculty. Th. B. degree offered upon completion of two years college.

Housing conditions excellent with modern brick apartments renting from \$13.00 to \$24.00 per month. Pastoral opportunities unexcelled, with over 500 rural churches within one hundred miles.

Fall Term Opens Sept. 8

THE RURAL THEOLOGICAL SEMINARY
OF THE SOUTH

On the campus of Southern Baptist College
Walnut Ridge, Arkansas

Mary Hardin-Baylor
an accredited Senior Liberal
Arts college for women
featuring . . .
★Excellent Student Associations
★Comfortable Living Conditions
★Reasonable Prices
★Excellent Faculty
★Small Classes
Gordon G. Singleton, Ph.D.
President
Belton, Texas

Department of Missions

C. W. CALDWELL, Superintendent

New Policies For Supplemental Aid

The Missions Committee, for some time, has been concerned about equalizing the supplement to the association and some definite policies to follow in regard to all supplementary aid. We give below the policies as adopted by the Mission Committee in their meeting July 14. It will be well for all associational officers to become familiar with these policies. If any church plans to make application for aid, these policies should first be read and followed. They are as follows:

AID ON SALARIES

Policies in regard to supplementary aid on associational missionaries' salaries:

As To Amount

In an effort to equalize the allocations, according to the strength of the associations, the following general policy will be followed:

Associations with less than 1,000 members—\$175 per month maximum.

Associations with 1,000 to 2,000 members—\$150 per month maximum.

Associations with 2,000 to 3,000 members—\$100 per month maximum.

Associations with 3,000 to 4,000 members—\$75 per month maximum.

Associations with 4,000 to 5,000 members—\$50 per month maximum.

Associations with 5,000 to 6,000 members—\$35 per month maximum.

Associations with 6,000 and above—none.

There will be a 10 per cent general cut in allocation on missionaries' salaries.

As to Person

(1) There must be evidence that the association has thoroughly investigated his moral character, his educational background, his denominational loyalty and his general qualifications of mission work and is convinced that he measures up in every respect. (2) No allocation will be given on the salary of a man who has reached retirement age when employed. And for those already employed, no supplement will be given more than 3 years after reaching retirement age.

As To Work

(1) The missionary must give full time to his work. By full time we do not mean simply preaching every Sunday, but six days per week given in the interest of associational missions. (2) The missionary must understand that associational missions includes: Evangelism, organization of missions and churches, resurrecting inactive churches, strengthening the weak churches, assisting churches in securing

pastors, study courses, Vacation Bible Schools, Schools of Missions and the promotion of all denominational causes. (3) A monthly report must be made by the missionary to the Department of Missions, showing the accomplishments of the month and the plans for the next.

POLICIES REGARDING SUPPLEMENTARY AID ON PASTOR'S SALARIES:

1. The pastor must give his full time to the ministry and if possible live on the field he serves.

2. The field should be surveyed to determine the possibilities and needs.

3. The church must canvass the membership to determine the full amount it is able to pay and must have a regular system of giving to the church budget.

4. A copy of the church budget must be submitted with application for aid.

5. The amount of aid is to be cut at least 10 per cent each year.

6. No checks will be mailed out until a monthly report is received of the pastor's services.

POLICIES REGARDING BUILDING FUND AID:

1. No aid will be given to a church with more than 300 members.

2. No aid will be given to a church which does not have clear title to its property.

3. Preference will be given to the church that plans a modern type building to accommodate Sunday School and Training Union.

4. No aid will be given until the church has canvassed its membership and the people have shown a generous spirit themselves.

5. The amount of aid given may vary according to: (1) The age of the church; (2) The numerical and financial strength; (3) The possibilities for growth and (4) The type of building to be erected.

NEW ORLEANS



BAPTIST THEOLOGICAL SEMINARY

Scriptural, Scholarly, Evangelistic, Missionary Training for all Types of Christian Leadership

For catalog, illustrative material or information write

ROLAND Q. LEAVELL, President
1220 Washington Ave. N. O., La.

Training Union Department

RALPH W. DAVIS, Secretary

Summer Field Workers At Work

During the week of July 12-19 the summer field workers worked in Boone County and Carroll County Associations. The five teams enrolled 281 people which was a high average. The Training Union was strengthened in every church. The following is an illustration of the lack of organization in some of our churches: "We found that there was a complete lack of organization in all unions. No definite schedule was followed and no records were used. At the end of the week a permanent record system had been established and a definite schedule was left for each union to follow."

The workers worked in Rocky Bayou Association during the week of July 19-26.

ATTENTION

Attention! An experienced team of summer field workers are working in Caroline Association during most of the summer, but have some time available during August. The team consists of Martha Sexton and Maleb Dean Marshall, both of Cabot. If you are interested, contact Miss Sexton. They do the same type of summer field work that the others workers do (Training Union Work). Any church taking these workers should care for their traveling expenses and take a love offering for them during the week.

TRAINING UNION WEEK AT RIDGECREST

The Third Training Union week at Ridgecrest has come to a close. A number of people from Arkansas attended the assembly. Tommy Purnell of First Church, Arkadelphia, represented Arkansas in the Speakers' Tournament, having won first place in the State Speakers' Tournament which was held at the State Training Union Convention, March 14-15, 1952. Miss Lynn Nunnally, Pulaski Heights Church, Little Rock, who

won first place in the Sword Drill at the State Training Union Convention in Little Rock, represented Arkansas at Ridgecrest in the Southern Baptist Sword Drill.

TWO TEXT BOOKS DROPPED TWO ADDED

Dr. J. E. Lambdin has just given the following information about Training Union study course books. Textbooks to be dropped are *The Eternal King* and *March of Missions*. Textbooks to be added are: *Adult Course III, The Christian in Modern World*, T. B. Maston (ready October 1, 1952), and *Adult Course VI, Homes That Last*, Arthur B. Rutledge, (ready January 1, 1953).

—000—

INSTEAD OF REPENTANCE

By CHARLES A. WELLS

There was once a time when men had an awareness of sin, and when they were overtaken by it, they recognized that restoration could only come through repentance and forgiveness. Men also knew that divine forgiveness had the power to restore character and recommit a life to respect and usefulness. It was not uncommon in the past for men to reach a high station in life after a bad start. Today the atmosphere is different; rarely does any one admit guilt. The modern custom, springing out of an era of neglect of religious teaching and Christian truth, is to shout defiance at any revealing light that might disclose the most damning and overwhelming evidence. The prevailing thesis is, "Anything is right if you can get away with it," and "Everybody else has been doing it too, so why blame me," etc., ad infinitum. This attitude, in business and private life as well as in government, is undermining our entire society.

REMEMBER YOUR ORPHANAGE IN FALL PROGRAM PLANS

Attention—

Pastors, Deacons, Leaders in Sunday School, Training Union, Brotherhood, W. M. U. . . .

As you plan the Fall Program of your church Include the Thanksgiving Offering for the Orphanage.

Remember . . .

This is a regular part of the Arkansas Baptist Program. We receive part of our support through the Cooperative Program, but must depend upon the Thanksgiving offering for the most of our support.

Any amount received more than actually necessary for operations will go in capital needs funds.

H. C. SEEFELDT, Superintendent,
Bottoms Baptist Orphanage

Samuel, Judge And Prophet

By MRS. HOMER D. MYERS

Lesson based on "International Sunday School Lessons; the International Bible Lessons for Christian Teaching," copyrighted 1951 by the Division of Christian Education, National Council of the Churches of Christ in the U. S. A.

Our last lesson told us about the birth and youth of Samuel, and how he grew up in the Tabernacle of God, under the tutorship of Eli the priest. Samuel was established as a prophet in Israel before the death of Eli. The first prophetic message God gave to Samuel was the death warrant of his friend Eli, because of sin in the household of the priest. According to the word of Samuel, Eli's sons died in battle and Eli died of shock when he heard the news.

At this period in Israel's history, the Israelites were at war with the Philistines and neither side was making progress. The Israelites decided to remove the Ark of the Covenant from the Tabernacle in Shiloh to the battle front where in their superstition they thought the presence of the Ark would give them a sure and easy victory. The result was that Israel lost 30,000 men and the enemy captured the Ark and took it home with them, where they placed it in the temple of their idol god, Dagon.

All superstition is paganism and comes to us from the heathen. God cannot, has never, and never shall be approached through a charm or a good luck token. God is Spirit. He must be worshiped in spirit and in truth, and He cannot be approached through physical objects nor other human beings, such as priests or dead saints. It is very well to have the prayers of living saints, but we prefer to trust the living Lord as our Mediator rather than a man who has been dead a thousand years or so.

DIVINE GUIDANCE

Again, we remind you there is no such thing as "good luck and bad luck" with the child of God—"The steps of a good man are ordered by the Lord, and though he fall, he shall not be utterly cast down, for the Lord upholdeth him with his hand." Judgment comes upon the Christian for various reasons—all in all because of sin. And confession of our sins to God, and repentance, the turning from sin, is the only way under the sun to avert the judgment and discipline of the Father. What blasphemy it is to hang up a horse shoe, or a rabbit's foot, or any other "good luck token" and expect the God of heaven to notice it, or to heed its presence. That is the way the heathen try to appease the anger of the evil spirit, ward off misfortune, and gain merit with the good Spirit.

DIVINE REMEDY FOR SIN

The Philistines persecuted Israel

Sunday School Lesson for

August 3, 1952

I Samuel 7:5-17

for 20 years, while they indulged in gross sin, idolatry, and superstition. When they cried out to God for deliverance, Samuel told them how to get deliverance: "Return to the Lord WITH ALL YOUR HEARTS, put away the strange gods, Balaam and Astaroth." Then all Israel put away their strange gods and gathered in Mizpeh for a day of prayer, fasting, and confession of sins. Thus, again, we have the divine prescription as the cure for judgment: believe God, turn from sin, confess your sins to Him against whom you have transgressed, and He will deliver from the enemy-tempter.

It seems to have been at this point in history that Samuel, the prophet became the judge also, for we read, "And Samuel judged Israel all the days (the remainder?) of his life." He had a circuit from Ramah, his home, to Bethel, to Gilgal, and Mizpeh, where he went regularly to settle the troubles of the people. We read further that Samuel also built an altar in Ramah. We do not know how often he served in the capacity of the priesthood, but we know he did offer sacrifices as priest. God was very particular about the office of the priest. Two of Aaron's sons were killed instantly for offering strange fire upon the altar in the early days of the priesthood. Saul was rejected as king, even though God had him anointed as king, because he became impatient when Samuel was to have met him to make an offering; the king grew tired of waiting for the priest of God, so he presumed to enter the field of the ordained and make the offering himself. Could he not do it as well as Samuel? God did not think so.

When people have good leadership, and will follow that leadership, they always prosper, whether on a national and political scale or in the religious realm. We read, "The Philistines were subdued and came no more into the coast of Israel: and the hand of the Lord was against the Philistines all the days of Samuel." Human nature is such that it demands a leader. There were no leaders during the age from Adam to Noah, and the world degenerated to the extent that God had to wipe mankind off the face of the earth in order to cleanse the earth of sin.

DIVINE LEADERSHIP

From the days of Noah, there have been leaders to guide the people. From the day that Jesus

organized his church, He has had leaders. He did not establish the clergy to rule over His people; but He did ordain the ministry to be "overseers of the flock." And without a leader, the flock gets scattered; they get confused; they become discouraged and dissatisfied. They become an easy prey for false prophets.

The Lord holds the leaders responsible for good leadership, and He holds the laity responsibility for the way they follow God's ordained leaders. A healthy, happy church is one where the leadership and the laity work hand in hand together for the progress of God's kingdom, with no big "I's" and little "you's." A strong, firm leadership is a must in church progress. A progressive people is one that is knit together in the bonds of love and unity, cooperating with the leader, else there will be no progress; it must be balanced with each carrying his part of the load or there will be a lopsided situation, limping along, with no constructive program.

Samuel was a good leader because he was a godly man: because God was with him in all he did; and because the people had a mind to follow his leadership.

—000—

"Jesus commended the hypocrites for tithing, and said they ought to have done it (Matthew 23:23). Yet some people claim

Who Furnished The Liquor?

Some months ago a fatal accident involving the lives of a group of young people took place upon one of the nation's highways. The evidence that liquor was the culprit was found in the broken whiskey bottles among the debris and mangled bodies of the youthful victims. The father of one of the girls in frenzied anguish over the untimely death of his beautiful daughter threatened to kill the one who had provided the liquor, but upon going to the cabinet where he kept his supply of choice beverages, he found a note in his daughter's handwriting. "Dad, we're taking along some of your good liquor—I know you won't mind."

—Nettleton Church Bulletin.

tithing is unscriptural. How can a child of God argue that God expects less of him than He does a hypocrite?"

EAST TEXAS BAPTIST COLLEGE

Marshall, Texas

Christian—Orthodox—Reasonable Rates
Business—Pedagogy—Pre-Professional
September 15, 1952—February 3, 1953
Contact: H. D. BRUCE, President

Ouachita College Is On The March!

- On the march in teaching great Christian principles.
- On the march in building, and in extensive campus improvement.
- On the march to a capacity enrolment this Fall.
- On the march in support of the Baptist program in Arkansas.

The support of Arkansas Baptists for Ouachita College is deeply appreciated by the college staff and the hundreds of Christian students who attend OBC. YOUR support has made possible new construction, remodeling and many other improvements so that OUACHITA BAPTIST COLLEGE can serve YOU better!

"Serving Arkansas Baptists Since 1886"

(Continued from Page Thirteen)

Main table with columns: Church and Pastor, Cooperative Program, Designated. Includes sections: CONCORD ASSOCIATION, CARROLL COUNTY ASSOCIATION, CENTENNIAL ASSOCIATION, CENTRAL ASSOCIATION, CLEAR CREEK ASSOCIATION, DARDANELE-RUSSELLVILLE ASSOCIATION, DELTA ASSOCIATION, FAULKNER COUNTY ASSOCIATION, GREENE COUNTY ASSOCIATION, GAINESVILLE ASSOCIATION, CURRENT RIVER ASSOCIATION, CONWAY-PERRY ASSOCIATION.

(Continued on Page Fifteen)

(Continued from Page Fourteen)

Table with columns: Church and Pastor, Cooperative Program, Designated, Church and Pastor, Cooperative Program, Designated. It lists various church associations including Pleasant Hill, Harmony Association, Hope Association, Little Red River Association, Little River Association, Independence Association, Mississippi County Association, Motor Cities Association, Mt. Zion Association, and Newton County Association. Totals for each association are provided.

(Continued on Page Sixteen)

(Continued from Page Fifteen)

Table with columns: Church and Pastor, Cooperative Program, Designated. Includes entries for Mena-Arlie McDaniel, New Hope-J. B. Liles, Salem, Two Mile-Mark Roberts, Vandervoort, Wickes-R. C. Jeans, Yocana.

TOTALS \$ 1,100.93 \$ 558.43

PULASKI COUNTY ASSOCIATION

Table with columns: Church and Pastor, Cooperative Program, Designated. Includes entries for Alexander-Bill Lewis, Amboy-Arnold Teel, Baptist Tabernacle, Vernon Yarborough, Baring Cross-David Garland, Bethany-L. G. Miller, Bellvue-David Patton, Bethel-Vernon Wickliffe, Biddle-Raymond Strickland, Calvary-Lawson Hatfield, Calvary, Rose City, P. D. Sullivan, Capitol Hill-C. S. Maynard, Cedar Heights-Vernon Bellue, Central, N. L. R., C. Gordon Bayless, Crystal Hill-H. L. Mowery, Crystal Valley, Glenn Emmerling, Davis Chapel-Stanley Durham, Douglasville, 1st-R. F. Weeks, Rosedale-A. D. Taulbee, East End-George Fox, Estes Chapel-Alex Davenport, Forty Seventh Street, R. D. Harrington, Friendship-L. M. Andrews, Gaines Street-C. E. Lawrence, Geyer Springs-Wesley Hoover, Grace, L. E.-Wesley Pruden, Grace, N. L. R.-L. C. Tedford, Gravel Ridge, Graves Memorial, James A. Thompson, Harmony-Tommie Conger, Hebron-C. E. Stewart, Highway-L. W. Williams, Holly Springs-Jack Parchman, Immanuel-W. O. Vaught, Jr., Ironton-Lee Lewis, Jacksonville-R. J. McMillan, Levy-W. Harry Hunt, Liberty-Eugene Corder, Life Line-Lawrence Kendrick, Little Rock, First-K. O. White, Little Rock, Second, Dale Cowling, Markham Street, J. A. Augustine, Martindale-C. D. Johnson, Mountain View No. 1, Mountain View No. 2, G. O. Ware, Nalls Memorial, Lucien E. Coleman, Jr., Natural Steps, North Little Rock, First, Owen W. Moran, North Point, Oakwood-Ezra Willard, Park Hill-R. L. South, Peoples-T. O. Voyle, Pike Avenue-Taylor Stanfill, Pilgrims Rest, Pine Grove-James Reed, Plainview-C. O. Abbott, Pleasant Grove-M. E. Faulkner, Pulaski Heights-W. H. Hicks, Reynolds Memorial, Guy S. Wilson, Roland-Marion Grubbs, Shady Grove-E. W. Goodson, Sherwood-James Johnson, South Highland, Ray Branscum, Southside, Stanfill-Elvin L. Johnson, Sylvan Hills-A. H. Mullins, Trinity-Preston Taylor, Tyler Street-Felix Williams, Vimy Ridge-Ralph Ferguson, West Side-T. P. Gladden, Woodlawn-Horace Grigson, Woodson-Carl Johnson, Worrells Memorial, W. J. Adkins, Zion Hill-G. A. Keeling, Miscellaneous.

TOTALS \$ 4,207.41 \$ 698.07

ROCKY BAYOU ASSOCIATION

Table with columns: Church and Pastor, Cooperative Program, Designated. Includes entries for Belview, Calico Rock-John D. McNair, Evening Shade, Finley Creek, Franklin-Clark Secoy, Guion-G. M. Roberts, Lone Star-John E. Hamilton, Melbourne-Ewell Boyles, Oxford-W. E. Davis, Rocky Bayou, Sage, Sidney-L. D. McDougale, Wiseman-W. E. Davis, Zion Hill-Norman Massey.

TOTALS \$ 236.71 \$ 154.56

STONE-VAN BUREN-SEARCY ASSOCIATION

Table with columns: Church and Pastor, Cooperative Program, Designated. Includes entries for Clinton-Harvey Bennett, Corinth-Arlie Bonds, Halfmoon-V. G. White, Holly Mountain, Leslie-L. P. Thomas, Lexington-Harry Mifflin, Marshall-E. W. Taylor, Mountain View, New Hopewell-Gene Smith, Pee Dee-J. D. Reeves, Plant-J. D. Reeves, Pleasant Valley-Arlie Bonds, Red Hill, St. Joe, First-E. W. Taylor, Scotland-Paul Carleton, Shady Grove-Arlie Bonds, Shirley-Harry Mifflin, Zion-J. T. Griffith.

TOTALS \$ 491.17 \$ 384.71

TRI COUNTY ASSOCIATION

Table with columns: Church and Pastor, Cooperative Program, Designated. Includes entries for Antioch-E. G. Wadell, Bartons Chapel, Charles Watkins, Beck Spur-A. L. Corbert, Cherry Valley-Curtis Downs, Crawfordsville, Earle-Joe Sullivan, Fair Oaks, Fitzgerald-N. T. Jones, Forrest City-T. K. Rucker, Gladden-S. J. Meador, Grace-T. D. Douglas, Harris Chapel, Jericho-G. C. Anderson, Madison-Marion Parish, Marion-W. P. Griffin, Mays Chapel, Mt. Pisgah, Palestine-O. M. Dangeau, Parkin-Ray Langley, Pine Tree, Riverside-W. M. Thompson, Shell Lake-Morris McGuire, Tilton-Lewis Bankston, Togo-W. L. Thatcher, Turrell-John Baker, Vanndale-Leroy Fitzgerald, West Memphis-Russell Clubb, Wheatley-Fred Sudduth, Wynne-Boyd Baker.

TOTALS \$ 6,116.85 \$ 974.46

TRINITY ASSOCIATION

Table with columns: Church and Pastor, Cooperative Program, Designated. Includes entries for Bethel, Corners Chapel-W. J. Deaton, Fisher-Glen Giles, Freer-Parker Hay, Greenfield-Dwight O. Northrip, Harrisburg-Lonnie Sims, Lebanon-Lealie Riherd, Lepanto, Maple Grove, Marked Tree-W. F. Carlton, Nelwander.

Table with columns: Church and Pastor, Cooperative Program, Designated. Includes entries for Pleasant Grove-Harold Sadler, Pleasant Hill-C. F. Barnett, Pleasant Valley, Red Oak-Max L. Taylor, South McCormick, Spear Lake-W. M. Foster, Trumann-J. M. Basinger, Tyrone-W. M. Pratt, Valley View, Waldenburg, Weiner-A. O. Hancock, Weona, West Ridge, Miscellaneous.

TOTALS \$ 1,025.09 \$ 485.01

WASHINGTON-MADISON ASSOCIATION

Table with columns: Church and Pastor, Cooperative Program, Designated. Includes entries for Berry Street Mission, Bethel-Roy Reed, Black Oak-Howard Prichard, Brush Creek-Oakley Long, Caudle Avenue-Roe Matthews, Elkins, Farmington-D. M. Krels, Fayetteville, 1st, Walter Johnson, Fayetteville, 2nd, Norman Drake, Friendship-Louis Tague, Hindsville-Charles Day, Huntsville-E. W. Jones, Immanuel, Fayetteville, G. W. Morrison, Johnson-Ewell Logue, Liberty-A. J. Scott, Lincoln-Jesse Coleman, Prairie Grove-John B. Stephen, Providence-Walter Jessor, Sonora-Glenn Steele, Springdale-Stanley Jordan, Spring Valley-Jack Taylor, Sulphur City, West Fork-Raymond Reed, Winslow-Leonard Dove, Miscellaneous.

TOTALS \$ 5,078.04 \$ 1,597.61

WHITE COUNTY ASSOCIATION

Table with columns: Church and Pastor, Cooperative Program, Designated. Includes entries for Beebe-William Eurnett, Bethany-John Pruitt, Central, Bald Knob, V. E. Defreese, Crosby-Earl Altom, El Paso-Charles Thompson, Griffithville-Ernest Anderson, Harris Chapel, Higginson-Gordon Oliver, Holly Grove, Judsonia, Kensett, Liberty, McRae-E. F. Simmons, Midway, Morrow-Mack McCollum, Mt. Hebron, Mt. Sidon-Earl Altom, New Bethel-A. L. Pate, Pangburn, Pleasant Valley-L. C. Langley, Rescue-James Kemper, Rocky Point, Rose Bud-Ernest Anderson, Royal Hill-John Pruitt, Searcy-W. R. Vestal, Smyrna, Union Valley-E. F. Simmons, West Point-L. C. Langley.

TOTALS \$ 1,849.56 \$ 358.61

WHITE RIVER ASSOCIATION

Table with columns: Church and Pastor, Cooperative Program, Designated. Includes entries for Antioch-A. B. Emerson, Cotter, East Cotter, Flat Rock-J. F. Duncan, Flippin-Albert Gaston, Gassville-Guy Hopper, Hopewell-Troy F. Melton, Mountain Home-D. W. Stork, New Hope-S. W. Wilkerson, Norfolk-Carl Huddleston, Oakland-J. F. Richardson, Pilgrims Rest-Carl Huddleston, Pleasant Hill-S. W. Wilkerson, Whiteville-T. E. Funderburk, Yellville-Ben Kelley.

TOTALS \$ 894.98 \$ 342.12

WOODRUFF ASSOCIATION

Table with columns: Church and Pastor, Cooperative Program, Designated. Includes entries for Augusta-W. T. Byrum, Cotton Plant-W. Ray Tatum, Good Hope, Gregory-Ralph Nelson, Hunter-Raymond Earley, McCrory-R. D. Harris, Morton-Max Kuespert, Pleasant Grove-Kermit Earley, Raynors Grove-M. L. May, Riverside-Milton Clem, Tupelo.

TOTALS \$ 970.79 \$ 272.14

Miscellaneous \$ 1,005.76

TOTALS \$219,631.35 \$45,256.53

TOTALS \$ 43,816.10 \$ 5,697.98

RED RIVER ASSOCIATION

Table with columns: Church and Pastor, Cooperative Program, Designated. Includes entries for Anchor, Antoine, Arkadelphia, 1st-David Moore, Arkadelphia, 2nd-S. M. Cooper, Arkadelphia, 3rd, C. R. McCollum, Beech Street, Gurdon, Dale McCoy, Belrne-Bedford Jackson, Bethel.

(Continued from Page Fifteen)

Table with columns: Church and Pastor, Cooperative Program, Designated. Includes entries like Mens-Arlie McDaniel, New Hope-J. B. Liles, Salem, Two Mile-Mark Roberts.

TOTALS \$ 1,100.93 \$ 558.43

PULASKI COUNTY ASSOCIATION

Table with columns: Church and Pastor, Cooperative Program, Designated. Includes entries like Alexander-Bill Lewis, Amboy-Arnold Teel, Baptist Tabernacle, Vernon Yarborough.

TOTALS \$ 4,207.41 \$ 698.07

ROCKY BAYOU ASSOCIATION

Table with columns: Church and Pastor, Cooperative Program, Designated. Includes entries like Belview, Calico Rock-John D. McNair, Evening Shade, Finley Creek.

TOTALS \$ 236.71 \$ 154.56

STONE-VAN BUREN-SEARCY ASSOCIATION

Table with columns: Church and Pastor, Cooperative Program, Designated. Includes entries like Clinton-Harvey Bennett, Corinth-Arlie Bonds, Halfmoon-V. G. White.

TOTALS \$ 491.17 \$ 384.71

TRI CITY ASSOCIATION

Table with columns: Church and Pastor, Cooperative Program, Designated. Includes entries like Antioch-E. G. Wadell, Bartons Chapel, Charles Watkins, Beck Spur-A. L. Corbert.

TOTALS \$ 6,116.85 \$ 974.46

TRINITY ASSOCIATION

Table with columns: Church and Pastor, Cooperative Program, Designated. Includes entries like Bethel, Corners Chapel-W. J. Deaton, Fisher-Glen Giles, Freer-Parker Hay.

Table with columns: Church and Pastor, Cooperative Program, Designated. Includes entries like Pleasant Grove-Harold Sadler, Pleasant Hill-C. F. Barnett, Pleasant Valley, Red Oak-Max L. Taylor.

TOTALS \$ 1,025.09 \$ 485.01

WASHINGTON-MADISON ASSOCIATION

Table with columns: Church and Pastor, Cooperative Program, Designated. Includes entries like Berry Street Mission, Bethel-Roy Reed, Black Oak-Howard Prichard, Brush Creek-Oakley Long.

TOTALS \$ 5,078.04 \$ 1,597.61

WHITE COUNTY ASSOCIATION

Table with columns: Church and Pastor, Cooperative Program, Designated. Includes entries like Beabe-William Burnett, Bethany-John Pruitt, Central, Bald Knob, V. E. Defreace.

TOTALS \$ 1,849.56 \$ 358.61

WHITE RIVER ASSOCIATION

Table with columns: Church and Pastor, Cooperative Program, Designated. Includes entries like Antioch-A. B. Emerson, Cotter, East Cotter, Flat Rock-J. F. Duncan.

TOTALS \$ 894.98 \$ 342.12

WOODRUFF ASSOCIATION

Table with columns: Church and Pastor, Cooperative Program, Designated. Includes entries like Augusta-W. T. Byrum, Cotton Plant-W. Ray Tatum, Good Hope, Gregory-Ralph Nelson.

TOTALS \$ 970.79 \$ 272.14

TOTALS \$219,631.35 \$45,256.53

RED RIVER ASSOCIATION

Table with columns: Church and Pastor, Cooperative Program, Designated. Includes entries like Anchor, Antoine, Arkadelphia, 1st-David Moore, Arkadelphia, 2nd-S. M. Cooper.