

Ouachita Baptist University

## Scholarly Commons @ Ouachita

---

Arkansas Baptist Newsmagazine, 1990-1994

Arkansas Baptist Newsmagazine

---

9-24-1992

### September 24, 1992

Arkansas Baptist State Convention

Follow this and additional works at: [https://scholarlycommons.obu.edu/arbn\\_90-94](https://scholarlycommons.obu.edu/arbn_90-94)



Part of the [Christian Denominations and Sects Commons](#), [Mass Communication Commons](#), and the [Organizational Communication Commons](#)

---

#### Recommended Citation

Arkansas Baptist State Convention, "September 24, 1992" (1992). *Arkansas Baptist Newsmagazine, 1990-1994*. 92.

[https://scholarlycommons.obu.edu/arbn\\_90-94/92](https://scholarlycommons.obu.edu/arbn_90-94/92)

This Book is brought to you for free and open access by the Arkansas Baptist Newsmagazine at Scholarly Commons @ Ouachita. It has been accepted for inclusion in Arkansas Baptist Newsmagazine, 1990-1994 by an authorized administrator of Scholarly Commons @ Ouachita. For more information, please contact [mortensona@obu.edu](mailto:mortensona@obu.edu).

# Arkansas Baptist



*Tupelo Anniversary*  
Page 20

Volume 91, Number 20

September 24, 1992



## COVER STORY

**1992 Arkansas Baptist State Convention** *Page 5*  
**Pine Bluff Convention Center** **Nov. 10-11**

**Missouri school  
fires chancellor**

*Page 22*

**Thousands of  
lives lost**

*Page 24*

**Europe, FMB  
sign pact**

*Page 25*

(BP) photo / Joe Clark



### Houston SBC housing requests should be postmarked Oct. 1

NASHVILLE (BP)—Hotel reservations for the 1993 Southern Baptist Convention annual meeting should be mailed Oct. 1. The meeting will be June 15-17 in Houston's George R. Brown Convention Center.

Requests for group housing forms should be directed to the Housing Information Office, SBC Executive Committee, 901 Commerce Street, Suite 750, Nashville, TN 37203, telephone (615) 244-2355.

A housing form and related information is provided on pages 26-28. of this edition of the ABN.

Requests postmarked Oct. 1 will receive priority. The SBC housing office will begin filling the requests Oct. 15. The housing office will assist in finding rooms for others after requests postmarked Oct. 1 have been filled. Registrants may not submit more than one request per person. Disabled persons and others with special needs should contact the SBC Housing Information Office.

### Pastor named Tennessee exec following close board vote

BRENTWOOD, Tenn. (BP)—James M. Porch, pastor in Tullahoma, Tenn., was elected executive director/treasurer of the Tennessee Baptist Convention Sept. 4.

Porch, 51, was elected by the TBC executive board and will succeed D.L. Lowrie who resigned to become pastor of First Baptist Church of Lubbock, Texas. Lowrie, Tennessee executive for three and a half years, leaves this month after announcing his resignation in May.

Porch was elected in a close secret ballot vote with 54 percent of the ballots cast. There were 78 votes (43-35) cast, with one abstention, and 21 absent of the 100-member board. The Mississippi native will take office Nov. 1.

### Young will appoint task force to 'look' at SBC

HOUSTON (BP)—A task force to examine "where we've been, where we need to be" will be named by Southern Baptist Convention President H. Edwin Young Sept. 23 so that "we can come together as a denomination."

Although many details will await a news conference immediately following the Sept. 21-23 Executive Committee meeting in Nashville, Young told Baptist Press he will appoint 9 special study groups with 11 members in each and two "co-chairmen" for each group. The 18 "cochairmen" will come together as the special task force to make suggestions and recommendations to the denomination.

### Richard Jackson announces pending retirement plans

PHOENIX, Ariz. (BP)—Richard Jackson, pastor of North Phoenix Baptist Church, announced his intention to retire during his Sunday morning sermon Sept. 13.

Jackson, four-time nominee for the Southern Baptist Convention presidency, told the congregation he made a prayer covenant with God in 1972 when the church purchased its present 40-acre property. He promised to remain as pastor until age 55; he will be 55 in August 1993.

Pastor of the Phoenix congregation nearly 25 years, Jackson said he did not want to stay beyond the days of his best usefulness. "I don't walk away from the very best job in my profession with little thought," he said. "But I must do what God would have me to do." While not giving a specific retirement date, Jackson said that he will stay to help the church through its transition period.

### Gary Jones declines post after split Georgia vote

ATLANTA (BP)—Stating no "person on God's earth can serve with a 66 percent vote," Southern Baptist Home Mission Board administrator Gary S. Jones "respectfully declined" a call to serve as executive director-treasurer of the Georgia Baptist Convention.

The 69-34 vote came after the GBC executive committee considered Jones' nomination in a grueling one and one-half hour discussion. In remarks after the vote, Jones told the committee the vote did not represent a mandate sufficient for him to accept the position.

Jones, HMB services section vice president, told the committee, "My prayers are with you. My commitment to you has not changed. My commitment is to missions, evangelism and ministry; the difference is I'm going to be doing it at the Home Mission Board."

## 'Grow Churches' 5

The 1992 Arkansas Baptist State Convention will be held Nov. 10-11 at the Pine Bluff Convention Center. This year's convention theme is "Grow Churches." (Note: the original date in the ABSC calendar, Nov. 17-18, is incorrect.)

## Also inside

### Speak Up

You'll Be Glad to Know.....4  
The President's Corner.....4

### Faith at Work

God's double-duty ministers.....17

### Local & State

Arkansas All Over.....18  
Tupelo celebrates 125th.....20

### Nation

Missouri school fires chancellor...22  
\$50,000 relief fund approved.....23

Lessons.....29-30

### World

Thousands of lives lost.....24  
European Baptist, FMB leaders sign pact.....25  
CBF endorses offer to Parks.....31

### Analysis

Just what can churches, pastors say and do in an election year?.....32

Next issue: Oct. 8

STATE MISSIONS SEASON OF PRAYER

**It's Time!**

by **Jimmie Barrentine**

ABSC Missions Dept. Director

"It's Time!" is a phrase that can carry ominous implications or overtones of delight. To an inmate on death row, it signals the end of appeals. To a child at 5 a.m. Christmas morning, it is a call to bliss.

It can mean, as when the Bible speaks of the fullness of time, that just the right time has arrived. It may even mean, if spoken with the right tone and emotion, that the time for action has already passed. As it is being used in this year's State Missions Study, it means that the time for action is now. It is time to pray, to go, to give.

It is also time for Godly optimism to penetrate our thoughts and actions, a feat not always easy to achieve. Our state is increasingly lost. In 1984, there was a church for every 1,550 persons. Today, it's one church for every 1,850 persons. As Pauline Tucker asserts in this year's State Missions Study for Adults, that means that almost 50 percent of the people in our state have neither Lord nor "pastor to call on when death, illness, divorce or other needs arise." Poverty, lostness, lack of education, crime, teen pregnancy, and alcohol and drug abuse are pervasive. Neither Little Rock nor Piggott has escaped the settling fog of sin's presence. It snakes its way up and down Highway 71, races along Interstates 30 and 40, and creeps its way right down Elm, Oak and Pine Streets in every village, town, city and census tract in the state.

Enough of that! It's time for godly optimism. If sin is pervasive, then let us reaffirm that God is omnipresent. His Spirit dwells in every highway and byway. Walk along the lake in Crossett's lovely park and he is there. Walk the streets of Little Rock's inner city and he is no less present. Walk down the corridors of any of our state prisons and even there God can be found.

Where God is, hope is not lost. A message from one of the State Mission chaplains tells of a young man saved in prison who has served his time and has now committed himself to a ministry among recently released inmates. Another inmate who has been locked up for almost 25 years has become an effective missionary to fellow prisoners.

It's time to reach Arkansas. It is not too late. God is still here and he would not have his people surrender to pessimism.

It's also time to pray. Prayer may be our primary strategy for reaching Arkansas.

Glendon Grober, State Brotherhood director, has shared a Prayer Strategy for World Evangelization that can be adapted for State Missions. This strategy sets out six principles of prayer.

(1) Prayer places the prayerer in a position of humility and openness to receive God's direction as to how, what and for whom to pray.

(2) Employing prayer as a strategy releases God's power in the prayerer and others and places the prayerer in partnership with God.

(3) Prayer is the strategy that breaks the power of Satan.

(4) Prayer is the one strategy that can fully penetrate and encompass all the people of our state and world.

(5) Prayer calls forth workers.

(6) Prayer is work—but it works!

It's also time to go. Godly optimism and prayer can combine to involve us in missions. Chaplaincy ministries, missions ministries, continuing theological education, language missions, church extension, church and community ministries, the Mississippi River Ministry, the Iowa Partnership, local associations and churches all need volunteers. It's time to say, "Yes, I'll do my part."

When the Hope Migrant Center was without a director, a 19-year-old summer missions volunteer named Monica Munoz stepped in. She led the work of other volunteers, following the guidance of local leadership. She organized, cleaned, sang and led Bible studies. Sixty people came to know Jesus because Monica said, "Yes, I'll do my part."

It's also time to give. The Dixie Jackson

State Missions Offering Goal is \$620,000. The State Woman's Missionary Union has diligently promoted, encouraged and supported that goal; but it is indeed a faith goal. It will exceed all Arkansas Baptists have done to date, but it is a goal that simply has to be met. It is also a goal that can and should be reached. It has been said that our checkbooks, or spending habits, record our life's priorities. In the next few weeks we have to decide as individuals and as churches just how much



of a priority we place on the spiritual condition of our state. More than that, though, we will have an opportunity to be a part of reaching our state for Christ by

(1) Adopting a Godly optimism that helps us believe that the challenge can be met

(2) Joining in partnership with God through prayer for State Missions

(3) Going outside the walls of home and church to involve ourselves in State Missions

(4) Giving to provide human and material resources needed to do State Missions.

Thank you, Arkansas Baptists, for your commitment to Missions in Arkansas.

**Arkansas Baptist**

Trenna Henderson.....Editor-Elect  
Millie Gill.....Executive Assistant to the Editor  
Palge Cooper.....Operations Manager

Colleen Backus.....Production Manager  
Diane Fowler.....Production Artist (part-time)  
Erwin L. McDonald, Litt. D. ....Editor Emeritus

Letters to the editor are invited. Letters should be typed double-space and may not contain more than 350 words. Letters must be signed and marked "for publication." A complete policy statement is available on request. Photos submitted for publication will be returned only when accompanied by stamped, self-addressed envelope. Only black and white photos can be used. Deaths of members of Arkansas churches will be reported in brief form when information is received not later than 14 days after the date of death. Opinions expressed in signed articles are those of the writer and do not necessarily reflect the editorial position of the Arkansas Baptist. Advertising accepted in writing only. Rates on request.

The Arkansas Baptist (ISSN 1040-6056) is published bi-weekly by the Arkansas Baptist News Magazine, Inc., 601-A W. Capitol, Little Rock, AR 72201/Subscription rates are \$9.85 per year (Individual) \$6.56 per year (Every Resident Family Plan), \$7.00 per year (Group Plan), Second Class Postage Paid at Little Rock, AR. POSTMASTER: Send address changes to the Arkansas Baptist, P.O. 552, Little Rock, AR 72203; telephone 501-376-4791.

Member of the Southern Baptist Press Association Volume 91 • Number 20

BOARD OF DIRECTORS: Nelson Wilhelm, Fort Smith, president; Lane Strother, Mountain Home; Bert Thomas, Searcy; Harold Gateley, Fayetteville; Don Heuer, Batesville; Greg Kirksey, Benton; Rick Hyde, Murfreesboro; Curt Hodges, Jonesboro; and Lucile C. Hagins, Fordyce.

DON MOORE

## You'll Be Glad To Know



Your worth to Jesus Christ and his kingdom is beyond calculation. Your worth is not to be found in who you are or what you do alone. It is what you are and what you do in association with other believers. Things we would never try alone, we can together.

For instance, would you or your church try to provide a daily ministry to the 350 people who suffer from disabilities at the Hot Springs Rehabilitation Center?

Would you or your church be able to keep a single chaplain, much less five chaplains in the prisons, youth services centers and the rehabilitation centers? Their work ranges from winning and baptizing a man to Christ, who was executed one week later, to sitting in the floor with a middle aged man who has a child's mind and telling him stories and singing about Jesus.

Working with others you and your church are providing 16 portable chapels for mission churches. Hispanic, Vietnamese, Korean, and Laotian pastors are receiving some salary supplement from you and your church. They are having glorious results in winning their people to Christ.

Would you or your church attempt to minister to 46,000 Mexicans who come through the Hope Migrant Center? In addition, great numbers of Hispanics are becoming citizens and settling in various parts of the state. They are the fastest growing church group in our convention.

Could you get missionaries out to all of our resort and campground areas during the summer? Not alone!

Your worth is tied to what you do with others. When you give to the Dixie Jackson State Mission offering you join your concerns and efforts with all of our other churches to do the things mentioned above, and far more. This offering provides 46 percent of all of our funds for state missions. Please give this month to the Dixie Jackson offering. Your pastor can secure envelopes for your use.

Don Moore is executive director of the Arkansas Baptist State Convention.

WILLIAM H. SUTTON

## The President's Corner

### Run to win the prize

"Do you not know that in a race all the runners run, but only one gets the prize? Run in such a way as to get the prize" (1 Co. 9:24).

I watched a football game a few nights ago between two small schools. As the hard fought game progressed, my attention was drawn to a particular player on one of the teams who lacked the speed, size and strength needed for his position. The other team quickly discovered his weakness and beat him often. Their running game rolled him under and late in the game they lofted a long pass over his head and into the outstretched arms of a more gifted athlete who beat him to the goal for a go ahead touchdown. However, due to the spectacular play of others, his team made a miraculous comeback and won the game in a breathless finish.

As the players left the field the victors were ecstatic. The losers were dejected. The little man that I had watched was among the ecstatic. The victory of his team had erased his personal despair and he celebrated with the best of them.

Sooner or later all of us take our turn in the slough of despondency where we are introduced to a world of personal defeats and disappointments. We are rolled under by events we cannot control. Duty falls upon us that we cannot discharge. We fail and are brought lower by others reminding us that we have failed. We starve for victories that seem to elude us and flow

easily to others.

In such times God's Word moves closer and speaks to the believer in terms not before understood:

Everyone born of God overcomes the world.

This is the victory that overcomes the world, even our faith. Who is it that overcomes the world? Only he who believes that Jesus is the Son of God (1 Jn. 5:4-5).

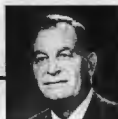
From the imprisoned Apostle Paul:

Now there is in store for me the crown of righteousness, which the Lord, the righteous Judge will award to me on that day - and not only to me, but also to all who have longed for his appearing (2 Tim. 4:8).

There is no doubt that we are commanded to "run in such a way as to get the prize." However, our Lord warmly assures us that if we wear the colors of Christ and do the best we can, he will take care of the prize.

And then the ultimate: "I have given you authority to trample on snakes and scorpions and to overcome all the power of the enemy; nothing will harm you. However, do not rejoice that the spirits submit to you, but rejoice that your names are written in heaven" (Lk. 10:18-20).

William H. "Buddy" Sutton, a Little Rock Attorney and member of Immanuel Church in Little Rock, is president of the Arkansas Baptist State Convention.



## Interested in a Ministry of Love?

♥ Arkansas Baptist Home is looking for dedicated Christian couples with no children or single females to live and work with children in a home-like setting.

♥ Salary, fringe benefits, and training are provided.

♥ Call or write: Royce Aston, P.O. Box 180, Monticello, AR 71655; phone: 501-367-5358.

## The Ultimate Fun Fundraiser For Youth Groups

Have a

### Pizza Day!

- No investment • Fast • Profitable • Easy
- You deliver • You pre-sell the orders
- No left over inventory • Can produce over 100 pizzas per hour • We will come to your church and help your group prepare fresh pizza • Anywhere in Arkansas

1-800-272-4177

Central Arkansas Promotions  
1030 Front Street • Conway, AR 72032

# Arkansas Baptist State Convention

*139th session • 145th year*

**Pine Bluff Convention Center**

*November 10-11, 1992*

**'Grow Churches'**

Photo Courtesy Pine Bluff Convention Center and Visitors Bureau



*The Pine Bluff Convention Center will host the 139th Session of the Arkansas Baptist State Convention on Nov. 10-11.*

## ANNUAL MEETING PREVIEW

**ABSC Tentative Program***Growing Churches***Tuesday Morning**

Nov. 10, 1992

|       |                                     |                   |
|-------|-------------------------------------|-------------------|
| 8:30  | Congregational Singing.....         | David Nunn        |
| 8:35  | Testimony/Prayer.....               | John Veasey       |
| 8:45  | Bible Study.....                    | Ken Hemphill      |
| 9:15  | Call to Order.....                  | William H. Sutton |
| 9:20  | Welcome.....                        | Bill Lewis        |
| 9:25  | Appointment of Committees.....      | William H. Sutton |
|       | Enrollment of Messengers.....       | Dillard Miller    |
|       | Adoption of Order of Business.....  | Jerre Hassell     |
|       | Tellers Committee Instructions..... | Don Hubbard       |
|       | Constitution Amendments.....        | Betty Harp        |
| 9:45  | Announcements.....                  | William H. Sutton |
| 9:50  | Congregational Singing.....         | David Nunn        |
| 10:25 | Guatemala Mission Report.....       | Glendon Grober    |
| 10:45 | Congregational Singing.....         | David Nunn        |
| 10:50 | Special Music.....                  | Larry Bradley     |
| 11:00 | President's Message.....            | William H. Sutton |
| 11:30 | Benediction.....                    | John Ward         |

**Tuesday Afternoon**

Nov. 10, 1992

|      |   |                   |
|------|---|-------------------|
| 1:30 | Music Men Brass.....                            | Glen Ennes        |
| 1:35 | Testimony/Prayer.....                           | Margarito Ramirez |
| 1:45 | Bible Study.....                                | Ken Hemphill      |
| 2:15 | Recognitions.....                               | William H. Sutton |
|      | Baptist Memorial Health Care System, Memphis    |                   |
|      | Baptist Medical System, Little Rock             |                   |
|      | Former Presidents                               |                   |
|      | Retired Baptist Workers.....                    | Lehman Webb       |
|      | New Arkansans.....                              | Don Moore         |
|      | Dr. Everett Sneed Recognition.....              | Don Moore         |
| 2:30 | Recognition of Missionaries.....                | William H. Sutton |
| 2:35 | Williams Baptist College Report.....            | Jimmy Millikin    |
| 2:50 | Miscellaneous Business                          |                   |
| 3:00 | Congregational Singing                          |                   |
| 3:05 | Christian Civic Foundation Report.....          | Larry Page        |
| 3:15 | Nominating Committee.....                       | Johnny Ross       |
| 3:25 | Executive Board Report.....                     | James McDaniel    |
| 3:45 | Congregational Singing.....                     | Dick Couch        |
| 3:50 | Special Music                                   |                   |
|      | .....Ladies Ensemble, Watson Chapel, Pine Bluff |                   |
| 4:00 | Message.....                                    | Ron Lewis         |
| 4:30 | Benediction                                     |                   |

**Tuesday Evening**

Nov. 10, 1992

|      |   |                   |
|------|---|-------------------|
| 6:15 | Congregational Singing.....             | Lester McCullough |
| 6:20 | Prayer.....                             | Doug Cathright    |
| 6:25 | Ouachita Baptist University Choir.....  | Charles Wright    |
| 6:40 | Bible Study.....                        | Ken Hemphill      |
| 7:10 | Arkansas Baptist Foundation Report..... | Harry Trulove     |
| 7:20 | Recognition of Denominational Guests    |                   |
|      | .....William H. Sutton                  |                   |
| 7:25 | Ouachita Baptist University Report..... | Ben Elrod         |
| 7:40 | Cooperative Program Video.....          | Mark Coppenger    |
| 7:45 | Cooperative Program Awards.....         | Jimmie Sheffield  |
| 7:55 | Congregational Singing.....             | Lester McCullough |
| 8:00 | Iowa-Arkansas Partnership Report.....   | Jimmy Barrentine  |
| 8:10 | Grow Churches Emphasis.....             | Jimmie Sheffield  |
| 8:25 | MasterSingers and Singing Women         |                   |
|      | .....Lester McCullough                  |                   |
| 8:40 | Message.....                            | Don Moore         |
| 9:10 | Benediction.....                        | Leslie Elam       |

**Wednesday Morning**

Nov. 11, 1992

|       |                                      |                   |
|-------|--------------------------------------|-------------------|
| 8:15  | Congregational Singing.....          | Glen Ennes        |
| 8:20  | Testimony/Prayer.....                | Johnny Herrington |
| 8:30  | Bible Study.....                     | Ken Hemphill      |
| 9:00  | Election of Officers                 |                   |
| 9:10  | Arkansas Children's Homes and Family |                   |
|       | Ministries Report.....               | Johnny Biggs      |
| 9:20  | Election of Officers                 |                   |
| 9:30  | Arkansas Baptist Newsmagazine Report |                   |
|       | .....Trennis Henderson               |                   |
| 9:45  | Elections of Officers                |                   |
| 9:55  | Report of Seminaries.....            | Don Stewart       |
| 10:00 | World Hunger Committee Report.....   | Betty Wixson      |
| 10:05 | Congregational Singing.....          | Glen Ennes        |
| 10:10 | Special Music.....                   | Lamar Puckett     |
| 10:15 | Convention Sermon.....               | Jim McDaniel      |
| 10:45 | Miscellaneous Business               |                   |
| 11:10 | Resolutions.....                     | Eddie Simpson     |
| 11:50 | Presentation of New Officers         |                   |
|       | Benediction by New President         |                   |

Organists: Becky Moore, Pine Bluff Immanuel Church (Tuesday)  
 Bob Dolan, Pine Bluff South Side Church (Wednesday)  
 Pianist: Steve Lawson, El Dorado Immanuel Church

**In this section .....**

- Credentials and Committees
- Pastors' Conference
- Ministers' Wives
- Alumnt meetings
- Other Interest Groups
- Budget and Recommendations
- Restated Articles of Incorporation and Bylaws
- Child Care

# Proper Credentials

Membership and messengers to the 1992 Convention are determined according to the Constitution of the Arkansas Baptist State Convention Article II "Membership," Section 1, 2 and 3 which state:

"Section 1. The Convention shall be composed of messengers from regular Baptist churches which are in sympathy with the principles and purposes of this Convention, and which desire to cooperate with other churches through this Convention.

"Regular Baptist churches are those Baptist churches which in doctrine and in practice adhere to the principles and spirit of The Baptist Faith and Message as adopted by the 1963 Session of the Southern Baptist Convention and The Baptist Faith and Message shall not be interpreted as to permit open communion and/or alien immersion.

"Section 2. Each cooperating church shall be entitled to three messengers with one additional messenger for each additional one hundred members or major fraction thereof above one hundred, provided, however, that no church shall be entitled to a total of more than ten messengers.

"Section 3. A standing Credentials Committee of five members shall be appointed by the president of the convention. No members of this committee may serve more than two consecutive conventions. The president of the convention shall fill vacancies and shall name the chairman each year."

An appendix, "Enrollment of Messengers," added in 1980, states: "Any challenge to the seating of any church's messengers and the basis of the challenge should be presented in writing to the convention president and the chairman of the Credentials Committee thirty (30) days prior to the annual meeting of the convention."

"The Credentials Committee will meet prior to the opening session of the convention and report their findings and recommendation to the opening session of the convention.

Another appendix, Number 13, "Seating of Messengers," passes in 1949, states: "Resolution adopted that this convention refuse to seat any church that accepts alien immersion; practices open communion; or affiliates with any branch of the Federal Council of Churches, World Council of Churches or any other organization similar to or growing out of such."

Any challenge to a church's messengers being seated should be sent to the chairman of the Credentials Committee and the president of the Arkansas Baptist State Convention.

We are fully aware that the Convention is not in session until we convene. For this reason

we can only request your cooperation in this matter. We believe that your help will make for a much smoother and more congenial convention. — Dillard Miller, chairman, Credentials Committee

## Registration

Messengers elected by Arkansas Baptist churches who are planning to participate in the annual meeting Nov. 10-11 at the Pine Bluff Convention Center must bring messenger registration cards approved by their churches and signed by their moderators or church clerks.

Messengers who present themselves for registration without properly certified credentials will be sent to the Credentials Committee.

## Balloting

In accordance with the constitution of the Arkansas Baptist State Convention, and in keeping with previous policies and procedures, the following guidelines have been established for voting at the annual meeting.

All duly-elected messengers who register at the convention will be given an official book of numbered ballots. Messengers are encouraged to print their names on the front of the ballot book as soon as they register.

A ballot is considered the property of the person to whom it is issued. Therefore, a ballot can be used only by that individual. Ballots are not to be exchanged or used by any other messenger or nonmessengers, even with the owner's consent. When ballots are used, instructions will be given designating which ballot is to be cast. Ballots which do not bear the appropriate number for a specific vote will be considered invalid. Ballots which are not legible or which are submitted blank will be considered invalid.

Messengers who lose or find ballot books should notify the registration desk. An owner may claim a lost ballot book only if the book bears his or her name. — Don Hubbard, chairman, Tellers Committee

## Resolutions

Arkansas Baptist State Convention President Buddy Sutton has appointed a Resolutions Committee to serve during the annual sessions of the Arkansas Baptist State Convention.

The committee requests that anyone desiring to present a resolution to the committee mail a copy of his or her proposed resolution to the committee by October 19. The committee requests that, if possible, the resolution be

presented on one page of typed copy. Receiving resolutions in advance will enable the committee to give each resolution more careful and prayerful attention.

It is understood that resolutions may be presented on the floor of the convention proper as defined by the convention order of business.

Proposed resolutions should be mailed to Eddie Simpson, 107 North Rose, Sheridan, AR 72150-1237.

We would like to express our appreciation in advance for your cooperation in this. — Eddie Simpson, chairman, Resolution Committee

## Convention Committees

### Credentials Committee

Dillard Miller, Mena, chairman  
David Uth, Camden  
Sid Carswell, Little Rock  
Jere Mitchell, Fayetteville  
W.R. Canary, Mount Vernon

### Resolutions Committee

Eddie Simpson, Sheridan, chairman  
T. Scott Hinton, Sherwood  
Byran E. Smith, Van Buren  
Tommy Cunningham, West Memphis  
Harold Ray, Jonesboro  
Bobby C. Pennington, Hamburg

### Tellers Committee

Don Hubbard, Carlisle, chairman  
Ron Clark, Ozark  
Randy Crews, McCrory  
Michael Bradley, Walnut Ridge  
John Guerra, Bauxite  
Tim Cypert, Yellville  
Earl Adams, Lincoln  
Kenneth Banard, Booneville  
John Greer, Conway  
Ronnie Noles, Mount Ida

### Parliamentarian

Hal Bass, OBU  
Monty Murray, Texarkana

### Order of Business

Don Nall  
Jere Hassell  
Rich Browning



## ANNUAL MEETING PREVIEW

## Interest Group Plans

In addition to the regular sessions of the Arkansas Baptist State Convention annual meeting, a variety of special interest groups will offer programs for messengers.

## Pastors

Arkansas Baptist pastors will convene their annual preconvention conference at 9:30 a.m. on Nov. 9 at the Pine Bluff Convention Center. Three sessions will elaborate on the theme "Rise Up and Stand Firm." Mark Brooks, pastor of Elmdale Church in Springdale is president of the Pastors' Conference.

Program personalities will include: Jim Lagrone, pastor of Bryant First Southern Church; Grant Ethridge, pastor of Lavaca First Church; Ralph Smith, pastor of Hyde Park Baptist Church in Austin, Texas; Dale Thompson, pastor of Fort Smith First Church; Ron Lewis, a church growth specialist from Nashville, Tenn.; David Wallace, pastor of Alamo City Baptist Church in San Antonio, Texas; Michael Gott, an evangelist from Jacksonville, Texas; Tom Elliff, pastor of First Southern Baptist Church in Del City, Okla.; and Ed Young, SBC president and pastor of Second Baptist Church in Houston, Texas. Luke Garrett, a Christian recording artist from Dallas, Texas, will bring special music.

## Wives

The 1992 Ministers' Wives Conference will be held Monday, Nov. 9, at South Side Baptist Church in Pine Bluff, starting at 9:30 a.m.

The conference theme "Partners in Prayer" will be interpreted by keynote speaker Barbara Cunningham from Waco, Texas. James Walker, director of the ABSC Annuity Department, will also speak. Morning seminars include "Time Management and the Minister's Wife" and "Family Altar: Ideas for One to a Dozen." The meeting will include a luncheon and wardrobe demonstration. The registration fee of \$8 is due by Oct. 26. Make the check payable to the Arkansas Baptist State Convention and mail to: Vicki Wickliffe, P.O. Box 578, Des Arc, AR 72040. Child care will be provided by South Side Church by reservation only (See form, this page.)

## Chaplains

Carter Tucker, the ABSC Chaplaincy Director, will be hosting a breakfast for chaplains and spouses at the Holiday Inn in Pine Bluff at 7:15 a.m. on Nov. 10. For

more information, call 376-4791, ext. 5150.

## Religious Educators

The Arkansas Baptist Religious Educators Association will hold its 1992 meeting Nov. 9 at Immanuel Baptist Church in Pine Bluff. Registration for the conference will begin at 12:30 p.m. and will conclude with a banquet at 5 p.m.

Ken Hemphill, director of church growth for the Home Mission Board, will be the guest speaker. Registration fee is \$15 for members (price includes dues and banquet) and \$6 for spouses. For reservations, call Pat Ratton, ABSC Sunday School Department, at 376-4791, ext. 5128.

## DOM

The Arkansas Baptist Director of Missions Fellowship will meet at 5 p.m. Monday, Nov. 9, at the Trotline Restaurant in Whitehall. No reservations are required, and the meal is dutch treat. For more information, call Norman Lewis, DOM for Black River Association at 886-2788.

## Child care

Preschool child care will be offered to

messengers and their families during the annual meeting of the Arkansas Baptist State Convention. Child care will be provided at South Side Baptist Church in Pine Bluff, not at the convention center. Pre-registration for babies to five-year-olds is required. No child care will be provided for school-age children at any session. A pre-registration form is provided on page 14.

## Alumni meetings

Southern Seminary—An alumni luncheon will be held Nov. 10 at 12 noon at the Holiday Inn, Pine Bluff. The speaker will be Walter Jackson, professor of ministry at the seminary. Tickets are \$9 in advance; \$10 after Nov. 6. For information or tickets, contact Byron Eubanks, 183 Lower Dam Pike, Arkadelphia, AR 71923; telephone 501-246-4531.

Southwestern Seminary—An alumni luncheon will be held Nov. 10, 12 noon at Immanuel Baptist Church in Pine Bluff. Speaker will be Thomas Briscoe, assistant professor of biblical backgrounds and archaeology. Tickets are \$7.50; checks should be made out to Mark Tolbert and mailed to him at P.O. Box 874, Wynne, AR 72396.

New Orleans Seminary—An alumni luncheon will be held at noon on Nov. 10, at the Admiral Benbow Inn in Pine Bluff. Charles Kelley, director of Doctor of Ministry and coordinator of off-campus Master of Divinity studies, will be the



## ABSC Minister's Wives Conference

Monday, November 9, 1992  
Southside Baptist Church, Pine Bluff  
Theme: "Partners in Prayer"

Keynote speaker: Mrs. Barbara Cunningham, Waco, Texas

9:30-9:50 a.m. - Registration

Wardrobe demonstration by  
Bethlet's of Pine Bluff.  
2+2=6-30 or how to get 30 outfits  
out of 10 pieces from your wardrobe.

also James Walker, ABSC Annuity Dept.

Morning Seminars:

1. Time Management and the Minister's Wife
2. Family Alternative: Ideas for 1 to a Dozen

Noon luncheon: Wardrobe demo,  
Business session and key-note address

Afternoon: 10 Small Share and Prayer Groups

Everyone please pre-register by the October 26 deadline!

Registration Form: Conference Pre-Registration Cost: \$8.00 (enclosed)

Name \_\_\_\_\_

Address \_\_\_\_\_

Church \_\_\_\_\_

City \_\_\_\_\_

Age Group (check one) 20-35 \_\_\_\_\_ 36-50 \_\_\_\_\_ Over 50 \_\_\_\_\_

Registration due by Monday, October 26, 1992

Make check payable to: Arkansas Baptist State Convention

Mail to: Vicki Wickliffe

P.O. Box 578, Des Arc, AR 72040

Child-care provided by

South Side Baptist Church

for pre-schoolers by reservation only.

\*Please provide lunch for your child.

Child's Name \_\_\_\_\_

Age \_\_\_\_\_ \*This child-care reservation

is for Minister's Wives Conference Only.

speaker. For more information contact Kenneth Blackwell, 2404 Nevada, El Dorado, AR 71730; telephone 862-0212.

**Midwestern Seminary—** Alumni will gather for a 3007 treat breakfast at Cook's Kitchen, 3007 Olive in Pine Bluff. There will be a video presentation.

**Mid-America Seminary—** Alumni and friends will hold a luncheon in the River Room of Holiday Inn South, 1200 E. Harding, Pine Bluff. A buffet is available for \$6 and no reservations are required.

**Ouachita Baptist University—** OBU will host a reception following Tuesday evening session in the Saracen Room of the Holiday Inn Convention Center. Tickets are \$6. Contact the Alumni office at 245-5506 for reservations.

**Williams Baptist College—** An Alumni luncheon, will be held Tues. Nov. 10 11:45 a.m. in the Jefferson Room of the Holiday Inn, Pine Bluff. Special music and speaker will be featured. Tickets are \$6.50 at the door, but reservations are requested. To make reservations, call 886-6741, ext. 120.

## Program personalities

**Ken Hemphill**, Director of Church Growth, Home Mission Board, Atlanta, Ga., will bring the Bible study.

**Ron Lewis**, Senior Consultant, Church Growth Designs, Nashville, Tenn., will bring the message on Tuesday morning and Tuesday afternoon.

**Don Moore**, executive director, Arkansas Baptist State Convention, will bring the message on Tuesday evening.

**William H. Sutton**, president, Arkansas Baptist State Convention, will bring the President's Message on Tuesday afternoon.

**Jim McDaniel**, pastor, First Baptist Church, Brinkley; president, ABCS Executive Board, will bring the Executive Board report on Tuesday afternoon and the Convention sermon on Wednesday morning.

## EXECUTIVE BOARD

# Recommendations

## Recommendation No. 1

### 1992 Budget

#### I. State Causes

|   |               |            |
|---|---------------|------------|
| 1. Administration.....                                | 1993 Requests | \$ 268,451 |
| 2. Business Services.....                             |               | 310,444    |
| 3. Annuity.....                                       |               | 19,937     |
| 4. Baptist Student Union.....                         |               | 680,920    |
| 5. Brotherhood.....                                   |               | 123,959    |
| 6. Church Music.....                                  |               | 181,812    |
| 7. Cooperative Ministries with National Baptists..... |               | 127,725    |
| 8. Discipleship Training.....                         |               | 226,895    |
| 9. Evangelism.....                                    |               | 253,728    |
| 10. Ministry of Crisis Support.....                   |               | 104,827    |
| 11. Missions.....                                     |               | 505,156    |
| 12. Church Leadership Support.....                    |               | 105,365    |
| 13. Stewardship.....                                  |               | 94,364     |
| 14. Sunday School.....                                |               | 314,035    |
| 15. Woman's Missionary Union.....                     |               | 308,855    |
| 16. Media Services.....                               |               | 67,460     |
| 17. Arkansas Baptist Assembly.....                    |               | 202,938    |
| 18. Camp Paron-Operating.....                         |               | 57,037     |
| 19. Camp Paron-Improvement Fund.....                  |               | 15,504     |
| 20. Expanded Church Annuity Plan.....                 |               | 345,596    |
| 21. Baptist Student Union-Buildings.....              |               | 120,400    |
| 22. Convention.....                                   |               | 118,013    |
| 23. Historical Commission.....                        |               | 8,722      |
| 24. Non-Department Programs and Other Causes.....     |               | 301,128    |
| 25. Salary Increase Reserve.....                      |               | 107,225    |

**Total Executive Board Programs.....\$4,970,496**

|  |            |
|--|------------|
| 26. Arkansas Baptist Children's Homes and Family Ministries..... | \$ 444,326 |
| 27. Arkansas Baptist Foundation.....                             | 243,956    |
| 28. Arkansas Baptist Newsmagazine.....                           | 209,809    |
| 29. Ouachita Baptist University.....                             | 2,225,125  |
| 30. Williams Baptist College.....                                | 670,177    |
| 31. Ministerial Scholarship Fund.....                            | 120,109    |

**Total State Programs.....\$8,854,000**

II. Southern Baptist Convention.....\$6,346,000

**TOTAL BUDGET.....\$15,200,000**

## Recommendation No. 2

The Executive Board recommends the approval of the 1993 Priority Programs related to Building God's Family and the 1993 department goals and projects.

In 1993, the Building God's Family priority emphasis is Grow Churches. The priority projects for this emphasis include: Southern Baptist Church Growth Plan Authentic Worship Workshop DiscipleALL Weekend Growth Project

Discipleship Training New Start Project Great Commission BREAKTHROUGH Total Church Life Church Arkansas TTOTE (To The Ends of The Earth) Church Growth Vision Conference Each department has goals and projects that relate to Building God's Family and to the departments' assigned programming responsibility. The departments have written goals with supporting projects to reach these goals.

## Recommendation No. 3

"Building God's Family" Proposed Revisions for 1991-1995 Objectives and Goals

O = Original, P = Proposed, N = New, D = Delete Original

- Reach People**
- O A. Assist 100 different churches each year to conduct witness training and to encourage soul-winning.
  - P A. Assist 100 different churches each year to conduct witness training and encourage soul-winning.
  - O B. Assist the churches to increase baptisms by 5% per year.
  - P B. Assist the churches to increase baptisms by an average of 335 per year.
  - O C. Assist the churches to have an increase in Sunday School enrollment of 2% each year. (No revision for Goal C.)
  - O D. Assist churches, in cooperation with the associations, to start 150 new churches/missions. (No revision for Goal D.)
  - O E. Encourage 650 churches to implement innovative strategies designed to reach out to persons of different ethnic, cultural and special age groups.
  - P E. Involve 650 churches to implement innovative strategies designed to reach out to persons of different ethnic, cultural and special age groups.
  - N F. Train participants from 300 churches each year in how to witness.
- Strengthen Families**
- O A. Assist 500 churches to provide training to stabilize and enrich marriages, family life and strengthen parenting skills. (No revision for Goal A.)
  - O B. Assist 200 churches to train parents to provide Christian sexuality education for their children.
  - P B. Assist 200 churches to train parents to provide Christian sexuality education for their children and youth.
  - O C. Assist 500 churches in providing resources and education on critical moral and family issues.
  - P C. Assist 200 churches in providing resources and education on critical moral and family issues.
  - N D. Assist 200 pastors/staff couples in enriching their marriage and family life.
- Performent Ministry**
- O A. Provide 30% of our churches and all of our associations information concerning resources and programs available to help in the discovery of critical human needs.
  - P A. Provide all churches and associations information concerning available resources and programs to help discover ministry needs.
  - D B. Seek to involve 300 additional churches in ministering to critical human needs of the homeless, hungry, illiterate, etc.
  - N B. Enable 900 churches to understand the ministry task of each program organization.
  - N C. Assist 500 churches and 10 associations to identify ministry needs in their churches and communities.
  - N D. Assist 250 churches and 5 associations to develop and implement projects to address ministry needs in their churches and communities.
  - N E. Assist in the involvement of 75,000 volunteers in projects which address

- N F. ministry needs. Involve 775 churches and 25 associations in the Mississippi River Ministry.
- Practice Prayer**
- D A. Assist 895 churches and all associations to help their people develop a personal and corporate prayer life.
  - D B. Assist 895 churches and all associations to hunger and pray for local and national spiritual awakening.
  - D C. Assist 895 churches and all associations to be involved in prayer support for Arkansas Baptist State Convention ministries and the local Bold Mission Thrust effort.
  - N A. Equip 300 or more churches to develop personal and corporate prayer ministries.
  - N B. Equip 36 or more associations to develop an associational prayer ministry.
- Grow Churches**
- O A. Assist 1000 churches to offer discipleship training. (No revision for Goal A.)
  - O B. Assist 350 churches to improve individual and corporate worship experiences. (No revision for Goal B.)
  - O C. Involve 400 college students annually in discipleship training through the BSU.
  - P C. Involve 550 college students annually in discipleship training through the BSU.
  - O D. Enhance the fellowship among pastors in the state and between pastors, DOM's and the state Executive Board staff. Criteria by which this will be measured is: a) 400 participants in 20 dialogue sessions with Executive Board staff. b) 300 participants in bivocational fellowship meetings.
  - P D. Enhance the fellowship among pastors in the state and between pastors, DOM's and the state Executive Board staff. Criteria by which this will be measured is having 400 participants in 20 dialogue sessions with Executive Board staff. (Deleted Criteria b.)
  - O E. Develop and implement a strategic plan for dealing with church conflict and forced terminations by December 31, 1991. (No revision for Goal E.)
  - O F. Assist 100 declining and plateauing churches to show numerical growth.
  - P F. Provide growth assistance to 400 declining/plateauing churches.
  - O G. Improve the leadership skills of 12,000 volunteer and paid church workers annually.
  - P G. Involve 100,000 volunteer and paid church workers in leadership training events.
  - O H. Increase the average per capita giving by 1%.
  - P H. Assist the churches to increase the average per capita giving by 1%.
- Support Missions**
- O A. Encourage 50% of the churches to increase their percentage of undesignated receipts given through the Cooperative Program.
  - P A. Assist 60% of the churches to increase their percentage of undesignated receipts given through the Cooperative Program.
  - O B. Increase the number of churches participating in mission offerings as follows:  
Lottie Moon Christmas Offering by 1% annually.  
Annie Armstrong Easter Offering by 2% annually.  
Dixie Jackson State Offering by 3% annually.
  - P B. Increase the number of churches participating in mission offerings as follows:

- Lottie Moon Christmas Offering by 1% annually.
- Annie Armstrong Easter Offering by 2% annually.
- Dixie Jackson State Offering by 2% annually.
- O C. Encourage 40% of our churches to be involved in associational, state, Home Mission Board, and Foreign Mission Board mission projects. (No revision for Goal C.)
- O D. Encourage 75% of our churches to be involved in mission education and awareness.
- P D. Encourage 70% of our churches to be involved in mission education and awareness.
- O E. Encourage the churches to involve 20% of their resident membership in the weeks of prayer and personal intercessory prayer for state, home and foreign missionaries.
- P E. Assist 85% of the churches to encourage their members' participation in the seasons of prayer for state, home, and foreign missions.
- N F. To involve 200 of our churches and 40 of our associations in projects with the Iowa Partnership

## Recommendation No. 4

Establishing Committee for 150th Year Celebration of the Arkansas Baptist State Convention.

The Executive Board recommends the establishment of a select committee to plan the celebration events of our 150th year to climax at the State Convention in November of 1998.

## ABSC Constitution and Bylaw Amendments

### Amended and Restated Articles of Incorporation of Arkansas Baptists State Convention

The Constitution and Bylaws Committee will recommend to the State Convention in its annual meeting the following restated Articles of Incorporation and Bylaws.

#### Article I. - Name, Duration and Agent for Service

Section 1. The name of this body shall be "The Arkansas Baptist State Convention."

Section 2. The duration of this corporation shall be perpetual.

Section 3. The Agent for Service of Process of the corporation shall be the Executive Director-Treasurer of the Arkansas Baptist State Convention, c/o the corporation's headquarters, 523 West Capitol Avenue, Little Rock, Arkansas 72201.

#### Article II. - The Purpose

Section 1. The purpose of the Arkansas Baptist State Convention is to assist the churches of the Convention in fulfilling their mission, and to encourage cooperative support of and involvement in our worldwide mission enterprise.

Section 2. The Baptist Faith and Message as adopted by the Southern Baptist Convention on May 9, 1963, shall be the doctrinal guideline for this Convention.

#### Article III. - Membership

Section 1. The Convention shall be composed of

messenger from regular Baptist churches which are in sympathy with the principles and purposes of this Convention, and which desire to cooperate with other churches through this Convention. Each messenger who is present at the time a matter is submitted to the messengers shall be entitled to one vote. No proxy voting shall be permitted.

Regular Baptist churches are those Baptist churches which in doctrine and in practice adhere to the principles and the spirit of The Baptist Faith and Message as adopted by the 1963 session of the Southern Baptist Convention, and The Baptist Faith and Message shall not be interpreted as to permit open communion and/or alien immersion.

Section 2. Each cooperating church shall be entitled to three messengers, with one additional messenger for each additional one hundred members, or major fraction thereof above one hundred, provided however, that no church shall be entitled to a total of more than ten messengers.

#### Article IV - Authority

Section 1. While independent and sovereign in its own sphere, this Convention shall never exercise any authority whatever over any church, nor shall it in any way interfere with the constitution of any church, or with the exercise of its functions as the only ecclesiastical body, but will cheerfully recognize and uphold the absolute independence of the churches.

#### Article V - Officers

Section 1. The officers of this Convention shall be: President, First Vice-President, Second Vice-President, Recording Secretary and Treasurer. Each officer of the Convention shall be elected annually, except the Recording Secretary and Treasurer who shall be the same person serving as the Executive Director-Treasurer of the Convention. The Executive Director-Treasurer of the Convention shall be elected by the Executive Board of the Arkansas Baptist State Convention and shall continue in office until his successor in office shall have been elected and qualified.

Section 2. It shall be the duty of the President to preside over the deliberations of the Convention and to discharge such other duties as may devolve upon the presiding officer of a deliberative body. He shall appoint all committees unless the Convention shall otherwise determine. In the absence of the President, one of the Vice-Presidents shall preside in his stead.

Section 3. The Executive Director-Treasurer of the Convention or his designee is authorized to execute and sign all official and legal documents involving transactions in agreement with the Restated Articles of Incorporation and Bylaws and/or approved by the Convention, the Executive Board or its Operating Committee.

Section 4. It shall be the duty of the Executive Director-Treasurer to keep a record of the proceedings of the convention, to edit and arrange publication of a suitable number of the minutes for distribution among the churches, as the Convention may direct, as soon as reasonably possible after the close of the annual meeting. He shall file and keep in order all papers deemed important to the work of the Convention.

#### Article VI - The Executive Board

Section 1. This Convention shall elect a Board of Trustees which shall constitute the Board of Directors. This Board shall be known as the "Executive Board of the Arkansas Baptist State Convention." The Board shall be composed of one member from the bounds of each cooperating association with a membership up to 5,000, and one additional member for each additional 5,000 constituency, or major fraction thereof, provided however, that no association shall be entitled to more than five (5) members. In addition, the Convention shall elect one lady from the bounds of each of the eight districts in the state to serve on the Executive Board. The President of the Arkansas Baptist State

Convention shall be a member of the Executive Board with full rights and privileges. Upon the removal of any Executive Board member from the bounds of his or her association, his or her membership on the Executive Board ceases therewith. His or her successor in office shall be nominated by the Convention Nominating Committee and elected by the Convention in annual session to fill the unexpired term. No person shall be a member of this Board who is an employee of any board, institution or agency of the Arkansas Baptist State Convention or who is receiving financial aid from the State Convention. One-third of this Board shall be elected annually to hold office for three years, and a majority of the Board Members shall constitute a quorum. Any member of the Executive Board who misses all the Executive Board meetings and the Executive Board committee meetings for one year shall be automatically dropped from membership on the Board.

Section 2. The Executive Board shall manage the affairs of the Convention in keeping with the Convention's instructions. The Executive Board shall raise, collect, receive and disburse all the funds of the Cooperative Program for both state and Southern Baptist Convention causes. The offices of the Executive Board shall be a clearing house for administering the business affairs of the Convention, and a headquarters for Baptist information. Its books, records and files shall at all times be open for the reference and inspection of any cooperating church which may desire to examine them.

Section 3. The Executive Board of the Convention may authorize the withholding of Cooperative Program funds from any institution or agency which fails to act in conformity with its Articles of Incorporation or fails to utilize funds given the institution or agency by the Convention according to stipulations and conditions attached to those funds by the Convention.

Section 4. The Executive Board shall render to the Convention annually a complete and detailed statement of all its business for the year.

#### Article VII - Trusteeships

The Convention shall elect trustees who shall serve as directors to manage and operate the institutions and agencies that the Convention may possess, as follows:

Section 1. Ouachita Baptist University, 24; Arkansas Baptist Children's Homes and Family Ministries, 18; Williams Baptist College, 24; Arkansas Baptist Foundation, 15; Arkansas Baptist Newsmagazine, 15; Baptist Memorial Health Care System, Inc. (Memphis), one-third of the trustees (3).

Section 2. One-third of the members of the Boards of Trustees shall be elected annually to serve for a term of three years. Any member of the Board of Trustees who misses all the meetings of that Board for one year shall be automatically dropped from membership on this Board.

Section 3. Each Board of Trustees shall elect from their membership a Chairman and a Recording Secretary and such other officers as seems advisable.

Section 4. All Trusteeships shall render to the Convention at each annual session complete and detailed reports of all transactions and business. The Trustees shall be sensitive to the expressions of the Convention's will in all matters.

Section 5. The Articles of Incorporation of each agency and institution solely possessed by this Convention shall contain the following provisions:

(a) The Arkansas Baptist State Convention shall be the corporation's sole member.

(b) The Arkansas Baptist State Convention shall elect the corporation's Board of Trustees which shall constitute its Board of Directors;

(c) The Articles of Incorporation shall first be approved by the Convention and thereafter no amendment to the corporation's Articles of Incorporation shall be made without the prior consent of the Convention;

(d) A vote in favor of the proposed amendment(s)

by a two-thirds majority of the messengers present and voting at the state convention shall constitute consent required by this section. No proposed amendment shall come before the Arkansas Baptist State Convention unless it has been reported to the Executive Board of the Convention at least sixty (60) days prior to the first session of the Convention's annual meeting; and

(e) The corporation is organized exclusively for religious, educational, or charitable purposes. No part of the net earnings of the corporation shall inure to the benefit of, or be distributable to its members, trustees, officers or other private persons, except that the corporation shall be authorized and empowered to pay reasonable compensation for services rendered and to make payments and distribution in furtherance of its charitable purposes. No substantial part of the activities of the corporation shall be the carrying on of propaganda, or otherwise attempting to influence legislation, and the corporation shall not participate in, or intervene in (including the publishing or distribution of statements) any political campaign on behalf of any candidate for public office.

Notwithstanding any other provision of these articles, the corporation shall not carry on any other activities not to be carried on by (a) a corporation exempt from federal income tax under Section 501 (c)(3) of the Internal Revenue Code, or the corresponding provision of any future federal tax code, or (b) by a corporation, contributions to which are deductible under Section 170(c)(2) of the Internal Revenue Code, or corresponding section of any future tax code.

Upon the dissolution of the corporation, the Board of Trustees shall, after paying or making provision for the payment of all of the liabilities of the corporation, convey all of the assets of the corporation to the Arkansas Baptist State Convention if at that time the Arkansas Baptist State Convention qualifies as an exempt organization under Section 501 (c)(3) of the Internal Revenue Code of 1986, or the corresponding provision of any future United States Internal Revenue law.

#### Article VIII - Operation of Agencies

Section 1. Each board, agency, and institution of this Convention shall submit to the Executive Board at its annual budget planning meeting, which is to be held prior to the annual meeting of the Convention, a detailed statement of its sources of income, and a budget of proposed expenditures for the ensuing year. When received and adopted by the Convention, these budgets shall become the basis for the ensuing year.

Section 2. No appeals for funds may be made to churches without the recommendation of the Executive Board and the approval of the annual convention in session, other than appeals through the Cooperative Program or from the annual Children's Homes and Family Ministries and the Dixie Jackson State Mission offerings. Other appeals may be made to individuals, organizations, corporations or foundations.

Section 3. A deficit in a board, agency or institution operational budget for any year shall be reported to the Executive Board and the convention in annual session.

Such deficit may not be carried over into the second year without the approval of the Executive Board and the convention in annual session as to how this deficit will be eliminated.

#### Article IX - Meetings

Section 1. The Convention shall meet annually, "if God permit," on a date to be fixed by the Convention. The Executive Board is empowered in emergencies to call special sessions of the Convention and to change either the time or place of meeting or both should the occasion demand.

## Article X - Amendments

Section 1. The Articles of Incorporation and Bylaws may be amended by a two-thirds vote of the members voting and concurring in two successive annual meetings of the convention, except Article IV, which shall remain forever unalterable in substance.

Section 2. Any proposed amendment to the Articles of Incorporation shall be presented to the Convention in writing, for its consideration, upon the first day of the annual meeting, and may be voted on, on any subsequent day during the meeting, provided adequate publicity has been given by previous announcement.

## Article XI - Parliamentary Authority

The current edition of Robert's Rules of Order, Newly Revised, shall be the standard for deciding questions of parliamentary procedure.

## Article XII - Districts

The Convention shall establish such geographic districts as it may deem wise to facilitate its promotion, administration, and organization of its objectives; provided, it will never violate in any way the boundaries of any association within the area of the convention. The boundaries of such districts shall be drawn so as to provide equitable geographical and numerical voice and representation on all convention committees, commissions, and boards, except the Executive Board. Each tenth year hereafter, the whole matter of districts shall be readjusted to take in consideration the flow of membership in our Baptist churches.

## Article XIII - Internal Revenue Requirements

Section 1. The corporation is organized exclusively for religious purposes. No part of the net earnings of the corporation shall inure to the benefit of or be to its members, trustees, officers or other private persons, except that the corporation shall be authorized and empowered to pay reasonable compensation for services rendered and to make payments and distribution in furtherance of its charitable purposes. No substantial part of the activities of the corporation shall be the carrying on of propaganda, or otherwise attempting to influence legislation, and the corporation shall not participate in, or intervene in (including the publishing or distribution of statements) any political campaign on behalf of any candidate for public office.

Section 2. Notwithstanding any other provision of these articles, the corporation shall not carry on any other activities not to be carried on by (a) a corporation exempt from federal income tax under Section 501 (c)(3) of the Internal Revenue Code, or the corresponding provision of any future federal tax code, or (b) by a corporation, contributions to which are deductible under Section 170(c)(2) of the Internal Revenue Code, or corresponding section of any future federal tax code.

Section 3. Upon the dissolution of the corporation, the Executive Board shall, after paying or making provision for the payment of all of the liabilities of the corporation, convey all of the assets of the corporation to an organization which qualifies as an exempt organization under Section 501 (c)(3) of the Internal Revenue Code of 1986, or the corresponding provision of any future United States Internal Revenue Code.

Arkansas Baptist State Convention  
November 20, 1991

## Amended and Restated Bylaws Arkansas Baptist State Convention

The following bylaws are enacted by The Arkansas Baptist State Convention for the purpose of carrying out its Articles of Incorporation and for the governing of the Convention.

## Article 1 - Enrollment of Messengers

Section 1. The Recording Secretary of the Convention shall enroll, upon arrival, messengers who present proper credentials from the churches. These messengers, together with others who may be enrolled upon presentation of approved credentials during the session, shall constitute the Convention. Any contention concerning seating messengers shall be presented to the Credentials Committee appointed by the President for recommendation to the Convention for its action.

Section 2. A standing Credentials Committee with five (5) members shall be appointed by the President of the Convention. No member of this committee may serve more than two consecutive Conventions. The President of the Convention shall fill vacancies and shall name the Chairman each year.

## Article II - Officers

Section 1. The President, First Vice-President and Second Vice-President shall be elected on the second day of the Convention, their terms of office to begin with the conclusion of the final session of the Convention.

Section 2. The election of all officers shall be by ballot; provided, however, there is only one nomination for the office, then the Recording Secretary or any other messenger present may direct to cast the ballot of the entire assembly by the single nominee.

Section 3. The First Vice-President shall be nominated and voted upon and elected after balloting for the President has been completed and the winner announced, and the Second Vice-President shall be nominated and voted upon and elected after the balloting for the First Vice-President has been completed and the winner announced. Each officer of the Convention shall be elected by a majority of all votes cast. In all cases of removal from office, by death or otherwise, of the President, the Vice-President shall automatically succeed to the office of President in the order of their election. The President may not be elected for more than two consecutive terms.

Section 4. All elected officers of this Convention shall be members of churches cooperating with this Convention. This must also apply to members of the Executive Board, agencies and institutional boards of this Convention.

## Article III - The Executive Board

Section 1. The Executive Board is empowered to act for the Convention between sessions of the Convention, provided that it shall never exercise any authority contrary to the expressed will of the Convention.

Section 2. When any unforeseen emergency occurs in any of the affairs of the Convention, or in any of the interests it controls, that in the judgment of the Executive Board requires action before the next session of the Convention, the Executive Board shall have full authority to take such action as may seem necessary, and all interests concerned shall be governed by such action, provided the Executive Board shall make full report of all matters pertaining thereto to the next session of the Convention for its approval, and provided further, that nothing in this article shall be construed as giving the Executive Board authority to execute any

matters already committed by the Convention to any of its agency or institutional Boards of Trustees.

Section 3. The Executive Board shall maintain in its offices a record of the names and addresses of the messengers determined to be eligible to vote at the convention, and the books and records of account. The Executive Board shall allow any messenger to inspect at any reasonable time these records, a record of the proceedings of the Convention and of the meetings of the Executive Board, its committees, and committees of the Convention.

Section 4. All proposals requiring the expenditures of money by the Convention, or the Executive Board of the Convention, from the annual budget, shall be considered by the Executive Board, before being presented to the Convention.

Section 5. No loans shall be made by the Convention to its officers, or to the members of the Executive Board.

Section 6. This Board shall be charged with the responsibility to have the books and financial affairs of each agency and institution of the Arkansas Baptist State Convention audited annually by an accredited firm of auditors, all audits to be accessible to the Executive Board at its budget planning session, and to be included in the institution's report to the Convention.

Section 7. Members of the Executive Board, having served two full terms of three years each shall not be eligible for re-election until as much as one year has elapsed. In determining eligibility for re-election, any individual filling a vacancy, shall be deemed to have served a full term if that individual shall have served two-thirds or more of a full term.

Section 8. The various associations of Arkansas whose churches are affiliated with this Convention, may submit to the convention nominating committee names of those whom they believe should be considered for membership on the Executive Board as members from that association.

## Article IV - Trusteeships

Section 1. All trusteeships of this Convention shall be sensitive to expressions of the Convention's will in all matters.

Section 2. Members of Boards of Trustees having served two full terms of three years each shall not be eligible for reelection until as much as one year has elapsed. In determining eligibility for re-election, any individual filling a vacancy, shall be deemed to have served a full term if that individual shall have served two-thirds or more of a full term.

Section 3. Not more than two (2) members of the Board of Trustees shall at the same time be members of the same local church, nor shall more than six (6) members reside in any one association. A member of the Board of Trustees of any agency or institution of the Convention may not at the same time be a member of any other Board of Trustees of any agency or institution of the Convention. No member of the Board of Trustees of any institution of this Convention may at the same time be a member of the Executive Board of the Convention.

Section 4. Any person receiving compensation from the Convention through the Executive Board shall not be a member of any Convention agency or institutional board. The President of the Convention by virtue of his office shall be a member of the Executive Board for the duration of his term of office.

## Article V - Nominating Committee

Section 1. A nine-member rotating Nominating Committee, comprised of at least three lay persons, will place in nomination at each annual convention names of persons to fill vacancies on all Convention boards and committees not provided for otherwise. Following each annual convention, the President will appoint three people to a three-year term to replace the three people rotating off, plus filling any vacancies that may exist on the Committee at that time. The President shall also name the Chairman, who shall

come from a one-year term member. Nominations for all boards from this Nominating Committee must be as equally divided as possible between the eight existing districts of The State Convention.

Section 2. A member filling an unexpired term not having served the full term of years as provided by the Articles of Incorporation, shall be, at the discretion of the Nominating Committee, eligible for election to a full term.

Section 3. No member of a commission or committee delegated to study or make recommendations concerning our agencies and institutions shall be a member of any Board of Trustees of such agency or institution.

#### Article VI - Articles of Incorporation and Bylaws Committee

Section 1. A Standing Articles of Incorporation and Bylaws Committee shall be composed of six (6) members to be nominated by the Nominating Committee. One-third of the membership shall be elected annually to serve for a term of three (3) years. No member shall be eligible to serve more than two terms until one year has elapsed. In determining eligibility for reelection, any individual filling a vacancy, shall be deemed to have served a full term if that individual shall have served two thirds or more of a full term.

Section 2. The President of the Convention shall appoint the Chairman of the Committee each year. The Chairman must be one who has been a member of the Committee for at least one year and may succeed himself until his tenure of eligibility shall expire.

Section 3. The Articles of Incorporation and Bylaws Committee shall be charged with the responsibility of advising the presiding officer concerning matters related to the Articles of Incorporation and Bylaws during the annual meeting of the Convention with reference to matters which may arise from the floor or from other committees. The Committee will act ad interim in all matters concerning the Convention Articles of Incorporation and Bylaws referred to it by any agency and institution of the Convention. The Committee will receive all proposed changes before the convention and will be responsible for presenting them in writing for Convention consideration upon the first day of the annual meeting after adequate publicity has been given. The duties of the Committee in no way preclude amendments to the Articles of Incorporation and Bylaws by messengers to the Convention.

Arkansas Baptist State Convention  
November 20, 1991

## Arkansas Baptist Foundation

### Restated and Amended

### Articles of Incorporation

#### CHARTER

STATE OF ARKANSAS COUNTY OF PULASKI  
KNOW ALL MEN BY THESE PRESENTS:

RESTATED ARTICLE OF INCORPORATION OF  
THE ARKANSAS BAPTIST FOUNDATION

#### I. NAME

The name of this corporation is "Arkansas Baptist Foundation."

#### II. MEMBERSHIP

THE ARKANSAS BAPTIST STATE CONVENTION  
SHALL BE THE CORPORATION'S SOLE MEMBER.

#### III. PRINCIPLES

The domestic office shall be domiciled in the City  
of Little Rock, County of Pulaski, Arkansas.

#### IV. DURATION

The period of duration of this incorporation shall  
be perpetual.

#### V. PURPOSE

THE ORGANIZATION IS ORGANIZED  
EXCLUSIVELY FOR RELIGIOUS, EDUCATION, OR  
CHARITABLE PURPOSES. The purpose is to serve any  
local church benevolent, charitable, educational or  
missionary undertaking, institution or agency, fostered  
by or having the official sanction of The Arkansas  
Baptist State Convention, such conjoined purposes to  
be executed simultaneously in the furtherance and  
development of benevolent, charitable, educational  
and missionary activities in and for the benefit of  
schools, hospitals, orphanages, and other enterprises  
operated under the supervision of or supported by  
The Arkansas Baptist State Convention. To such end,  
the Foundation may receive by bequest, devise, gift,  
purchase or lease, either absolutely or in trust, any  
property, real, personal or mixed; and administer such  
property, convey such property, invest and reinvest  
the same, or the proceeds thereof, in such manner as  
in the judgment of the Directors will best promote  
such objects. The Foundation may develop innovative  
ways and means for raising, developing and acquiring  
funds for the charitable purposes hereof; act as an  
agent for life insurance companies in procuring,  
receiving and forwarding applications for life insurance,  
together with the collection of premiums and the  
taking of such other actions as may be designated to  
agents by life insurance companies in order to facilitate  
the contribution by donors of policies of life insurance  
the beneficiary of which is this organization or some  
other charitable cause amenable to the Arkansas Baptist  
State Convention, such proceeds to be used for the  
charitable objects and purposes thereof.

The Corporation may also receive and administer  
assets where a substantial portion of a gift or bequest  
is for the benefit of a Baptist cause, and a smaller  
portion of a gift or bequest is for any benevolent,  
charitable, educational or missionary undertaking,  
institution or agency, provided the undertaking of said  
institution or agency is organized and operated  
exclusively for religious, charitable, scientific, literary  
or educational purposes and qualifies as a publicly  
supported organization as defined in the Internal  
Revenue Code and the regulations thereunder, and is  
compatible with the purposes of The Arkansas Baptist  
State Convention. No substantial part of the activities  
of the corporation shall be carrying on of propaganda,  
or otherwise attempting to influence legislation, and  
the corporation shall not participate in, or intervene in  
(including the publishing or distribution of statements)  
any political campaign on behalf of any candidate for  
public office.

NOTWITHSTANDING ANY OTHER PROVISION  
OF THESE ARTICLES, THE CORPORATION SHALL  
NOT CARRY ON ANY OTHER ACTIVITIES NOT TO  
BE CARRIED ON BY (a) A CORPORATION EXEMPT  
FROM FEDERAL INCOME TAX UNDER SECTION 501  
(c)(3) OF THE INTERNAL REVENUE CODE, OR THE  
CORRESPONDING PROVISION OF ANY FUTURE  
FEDERAL TAX CODE, OR (b) BY A CORPORATION,  
CONTRIBUTIONS TO WHICH ARE DEDUCTIBLE  
UNDER SECTION 170 (c)(2) OF THE INTERNAL  
REVENUE CODE OR CORRESPONDING SECTION OF  
ANY FUTURE TAX CODE.

#### NONSTOCK CORPORATION

This corporation shall be nonstock and no  
dividends or pecuniary profit shall be declared or paid  
to the members thereof.

#### VII. GIFTS

In every case where specific instructions shall  
have been given the Directors by the donor, grantor or  
testator (testatrix) said instructions shall be binding  
upon this corporation and shall be faithfully carried  
out; provided, however, if the object or purpose to

which such designated gift was made shall cease to  
exist and if, in the opinion of the Board of Directors,  
no similar agency or institution can be found, then  
such designated gift shall become and be a part of the  
undesignated funds or property of the corporation.

#### VIII. DIRECTORS

The number of Directors shall be a minimum of  
fifteen (15) and they shall be elected by The Arkansas  
Baptist State Convention at its annual meeting with  
one-third (1/3) elected at each annual meeting. The  
Directors shall be faithful members of a Baptist church  
in active cooperation with the Arkansas Baptist State  
Convention. Any vacancy that occurs due to death,  
resignation or a move out of state shall be filled at the  
next annual meeting of the Arkansas Baptist State  
Convention.

No Director of this corporation shall receive, or be  
lawfully entitled to receive, any salary or remuneration  
for services connected with the administration of the  
affairs of this corporation. Actual expenses incurred  
by such person may be refunded when authorized by  
the Directors.

#### IX. AUTHORITY

The corporation shall have the right to mortgage,  
hypothecate or otherwise pledge either the real,  
personal or mixed property under the ownership or  
control of the corporation.

As they may deem advisable, the Directors shall  
have authority to design Bylaws that are consistent  
with the provisions of this charter and the policies of  
the Arkansas Baptist State Convention.

#### X. DISSOLUTION

AFTER PAYING OR MAKING PROVISIONS FOR  
THE PAYMENT OF ALL OF THE LIABILITIES OF THE  
CORPORATION, CONVEY ALL OF THE ASSETS OF  
THE CORPORATION TO THE ARKANSAS BAPTIST  
STATE CONVENTION IF AT THAT TIME THE  
ARKANSAS BAPTIST STATE CONVENTION QUALIFIES  
AS AN EXEMPT ORGANIZATION UNDER SECTION  
501 (c)(3) OF THE INTERNAL REVENUE CODE OF  
1986, OR THE CORRESPONDING PROVISION OF  
ANY FUTURE UNITED STATES INTERNAL REVENUE  
LAW.

All other assets under management shall be  
conveyed to the institution/agency that placed the  
funds with the Foundation or to the institution/agency  
designated by the grantor, donor or testator(testatrix).

#### XI. AMENDMENTS

THE RESTATED ARTICLES OF INCORPORATION  
SHALL FIRST BE APPROVED BY THE ARKANSAS  
BAPTIST STATE CONVENTION AND THEREAFTER  
NO AMENDMENT TO THE CORPORATION'S  
ARTICLES OF INCORPORATION SHALL BE MADE  
WITHOUT THE PRIOR CONSENT OF THE  
CONVENTION. NO PROPOSED AMENDMENT SHALL  
COME BEFORE THE ARKANSAS BAPTIST STATE  
CONVENTION UNLESS IT HAS FIRST BEEN presented to  
the Arkansas Baptist Foundation Board of Directors  
for their consideration and examination and then  
REPORTED TO THE EXECUTIVE BOARD OF THE  
CONVENTION AT LEAST SIXTY (60) DAYS PRIOR TO  
THE FIRST SESSION OF THE CONVENTION'S ANNUAL  
MEETING.

A VOTE IN FAVOR OF THE PROPOSED RESTATED  
ARTICLES OF INCORPORATION OR FUTURE  
AMENDMENTS BY A three-fourths majority of the  
MESSAGERS PRESENT AND VOTING AT THE STATE  
CONVENTION SHALL CONSTITUTE CONSENT  
REQUIRED BY THIS SECTION.

Note: The original Charter was approved by the  
Arkansas Baptist State Convention in 1948, and the  
Charter issued under the laws of the State of Arkansas,  
April 25, 1949. It was amended at the annual meeting  
of the Arkansas Baptist State Convention in November,  
1958, 1976, 1988.

## By-Laws of Arkansas Baptist Foundation

### ARTICLE I

#### Membership

THE ARKANSAS BAPTIST STATE CONVENTION SHALL BE THE CORPORATION'S SOLE MEMBER.

### ARTICLE II

#### Annual Meeting

This corporation shall, at the annual meeting of the Arkansas Baptist State Convention, provide reports and bring recommendations from the Board of Directors as needed.

### ARTICLE III

#### Board of Directors

The affairs of the corporation shall be administered by the Board of Directors. At least two-thirds (2/3) of the Directors shall be laypersons.

Section 1 - Qualifications: Each Director shall be an active member of a Baptist Church cooperating with the Arkansas Baptist State Convention. In light of the purpose of the Foundation, this person should be one with proven business ability. Diversification is desired in such professional fields as accounting, estate planning, business, management, finance, legal, investment, real estate, and similar fields.

Section 2 - Method of Election and Term of Office: One-third (1/3) shall be elected annually by the Arkansas Baptist State Convention to hold office for three (3) years. No person shall serve more than two (2) consecutive terms. One (1) year must elapse before being eligible for re-election.

The Executive Director of the Executive Board, the President of the Executive Board and the President of the Arkansas Baptist State Convention shall be advisory members.

Any member who misses all of the Board and committee meetings during a 12 month period shall be dropped from membership on this board.

No person shall be a member of this Board who is an employee of any Board or institution of The Arkansas Baptist State Convention, or who is receiving financial aid from the State Convention.

Section 3 - Vacancies: Any vacancy that occurs due to death, resignation or a move out of state shall be filled at the next annual meeting of the Arkansas Baptist State Convention.

#### Section 4 - Duties:

(1) Investments - It shall be the duty of the Directors to invest and reinvest all funds delivered to the corporation by gifts, devise, bequests or otherwise, as well as the undistributed income arising from such investment. The Investment Committee acts on behalf of the full Board in matters relating to buying and selling securities.

(2) Distribution - The Board of Directors shall allocate all designated income that is available for distribution at least once each three months. This distribution is made only when the method of distribution of principal or income is designated by the donor or testator; otherwise, such distribution shall be made as provided in the Charter of the corporation.

(3) Reports - The Directors shall make an annual report of the affairs of the corporation to the Arkansas Baptist State Convention and upon request furnish any interested institution information concerning the investment of funds for such institution. The books of the corporation shall be audited annually by a Certified Public Accountant recommended by the Foundation's Executive Committee and approved by its Board of Directors. An report shall be published by The Arkansas Baptist State Convention annually.

(4) Depository - The Board of Directors shall see that a safe deposit box is maintained for the safekeeping of all legal papers, stocks, bonds, and other appropriate assets of the corporation. This box shall be entrusted to the chief executive officer of the corporation and

shall be entered by any two of the following persons: President, Vice President, a member of the Board of Directors or a bonded employee of the Foundation.

Section 5 - Extent of Authority: The Directors shall have and exercise full authority with reference to the investment, reinvestment, and administration of the principal and undistributed income of all funds and property of the corporation. Where funds or property are given or devised to said corporation with specific conditions as to the administration of the fund or the distribution of income, said Directors shall have full authority to carry out those directions. All investments shall comply with the Arkansas Statutes, Section 58-302, being prudent man rule for investments.

With the consent of the Board of Directors, the President, Vice President, and the Treasurer of the corporation, or any one of such officers, shall have authority and empowerment to transfer, endorse, sell, assign, set over, and deliver any and all shares of stock, bonds, debentures, notes, evidence of indebtedness, or other securities now or hereafter standing in the name of or owned by this corporation, and to make, execute and deliver written instruments necessary or proper to effectuate the authority hereby conferred. Any such transaction will require a separate resolution signed by the Secretary of the corporation.

The Board of Directors shall be empowered to employ as they deem necessary an adequate staff of the effective and efficient management of this corporation.

### ARTICLE IV

#### Officers and Duties

Section 1 - Officers: The officers of this corporation shall consist of a Chairman of the Board, Vice Chairman, President, one or more Vice Presidents, Secretary,

Treasurer, and such other officers as the Board of Directors may select. Each officer shall hold office for one year provided that the term of salaried employees and officers shall be fixed by the Board of Directors. The Treasurer may also be the chief executive officer of the corporation.

#### Section 2 - Duties:

(1) Chairman of the Board - The Chairman of the Board shall preside over all meetings of the Directors, shall be their official spokesman, and shall perform such other duties as ordinarily pertain to that office.

(2) Vice-Chairman: In the absence of the Chairman of the Board, the Vice Chairman is to preside over all meetings of the Directors. He shall also serve as Chairman of the Budget Planning Committee.

(3) Secretary: The Secretary shall cause to be kept a record of all minutes of each meeting of the Board of Directors, and to perform such other duties as are usually incident to the office of secretary.

(4) President - The President shall be the chief executive officer of the corporation, and shall perform such duties as the Directors may from time to time direct.

(5) Treasurer - The Treasurer shall have custody of the funds, securities, and property of the corporation, subject to the provisions hereof and to such regulations as may be prescribed by the Board of Directors. Funds belonging to the corporation shall be deposited in such bank, banks, or trust companies as may be designated by the Board of Directors or its Executive Committee. Such funds may be withdrawn by check or draft as executed by the Treasurer, the Executive Secretary of the Executive Board of the Arkansas Baptist State Convention, or by such persons as may be designated by the Board of Directors. The Treasurer shall cause to be published at least quarterly, a financial

## PRE-REGISTRATION FOR PRESCHOOL CHILD CARE

### ARKANSAS BAPTIST STATE CONVENTION

November 10-11, 1992 • Pine Bluff Convention Center  
Child Care provided at South Side Church, Pine Bluff

Preschool child care will be offered to messengers and their families during the annual meeting of the Arkansas Baptist State Convention, Nov. 9-11, 1992. Pre-registration for babies through five year olds is necessary in order to provide quality care with a planned program for pre-schoolers. No child care will be provided for school-age children at any session. Please fill out the registration form below and mail immediately.

Note: Children will need to be picked-up during the breaks for meals. Child care will only be provided during the session listed below.

Child's Name \_\_\_\_\_ Age \_\_\_\_\_

Parent's Name \_\_\_\_\_ Phone \_\_\_\_\_

Address \_\_\_\_\_ City \_\_\_\_\_ Zip \_\_\_\_\_

Please circle sessions needed:

Monday, Nov. 9 Morning 9:30-11:30 Afternoon 1:30-4:00 Evening 6:30-9:00

Tuesday, Nov. 10 Morning 8:30-11:30 Afternoon 1:30-4:30 Evening 6:15-9:10

Wednesday, Nov. 11 Morning 8:15-11:50

Mail to: Lois Grafton, South Side Baptist Church,  
2309 Poplar Pine Bluff, AR 71601

statement of the corporation. The Treasurer and such other persons entrusted with the handling of funds, securities, and other property shall be bonded in such sum as may be fixed by the Directors; the expense of this bond to be paid by the corporation as an operating expense.

#### ARTICLE V

##### Meetings

Section 1 - Regular Meetings: The Board of Directors shall meet at least four times each year.

Section 2 - Called Meetings: - Called meetings may be held upon the request of the Chairman of the Board and any three members of the Board of Directors. The Chairman of the Board or the President shall give sufficient notice of the time and place thereof to enable the Directors to attend.

Section 3 - Quorum - A majority of the board members shall constitute a quorum and all matters properly coming before them shall be determined by a majority vote of those present.

#### ARTICLE VI

##### Committees

Section 1 - Appointment: Unless otherwise specified, the Chairman of the Board shall cause such committee or committees to be appointed as the Directors may specify. The Directors shall delegate such authority as may be deemed advisable 80 long as the same shall be within the limits of their own authority and discretion.

Section 2 - Committee Responsibility: Each committee is to discharge its responsibilities as outlined in the Policy Manual of the Foundation.

#### ARTICLE VII

##### Distributions

All funds received and administered by the corporation and distributed as therein provided shall be so administered and distributed for the benefit of local churches, charitable institutions or agencies as defined in the Internal Revenue Code and the regulations thereunder, the principal agencies being Baptist churches, institutions and agencies, located in the State of Arkansas, and causes, agencies and institutions fostered by and having the official sanction of the ARKANSAS BAPTIST STATE CONVENTION OF THE SOUTHERN BAPTIST CONVENTION, except where a trust shall provide for training in a professional school not operated by an Arkansas Baptist school. In such case, the income may be directed to an institution

selected by the Board of Directors.

#### ARTICLE VIII

##### Activities

NO SUBSTANTIAL PART OF THE ACTIVITIES OF THE CORPORATION SHALL BE THE CARRYING ON OF PROPAGANDA, OR OTHERWISE ATTEMPTING TO INFLUENCE LEGISLATION, AND THE CORPORATION SHALL NOT PARTICIPATE IN, OR INTERVENE IN (INCLUDING THE PUBLISHING OR DISTRIBUTION OF STATEMENTS) ANY POLITICAL CAMPAIGN ON BEHALF OF ANY CANDIDATE FOR PUBLIC OFFICE.

NOTWITHSTANDING ANY OTHER PROVISION OF THESE ARTICLES, THE CORPORATION SHALL NOT CARRY ON ANY OTHER ACTIVITIES NOT TO BE CARRIED ON BY (a) A CORPORATION EXEMPT FROM FEDERAL INCOME TAX UNDER SECTION 501 (C)(3) OF THE INTERNAL REVENUE CODE, OR THE CORRESPONDING PROVISION OF ANY FUTURE FEDERAL TAX CODE, OR (b) BY A CORPORATION, CONTRIBUTIONS TO WHICH ARE DEDUCTIBLE UNDER SECTION 170 (C)(2) OF THE INTERNAL REVENUE CODE OR CORRESPONDING SECTION OF ANY FUTURE TAX CODE.

#### ARTICLE IX

##### Seal

The seal of the corporation shall be circular in form with the name "Arkansas Baptist Foundation," around the outside border, and the words, "Corporate Seal," in the center.

#### ARTICLE X

##### AMENDMENTS

These By-Laws may be amended by a three-fourths (3/4) vote of members present and voting at any annual meeting of the Arkansas Baptist State Convention. No amendment shall be voted on until the same has first been presented at a meeting of the Board of Directors of the Arkansas Baptist Foundation for their consideration and examination AND REPORTED TO THE EXECUTIVE BOARD OF THE CONVENTION AT LEAST SIXTY (60) DAYS BEFORE BEING SUBMITTED THE FIRST SESSION OF THE ARKANSAS BAPTIST STATE CONVENTION'S ANNUAL MEETING.

Revised: 1950, 1958, 1969, 1974, 1976, 1982, 1987, 1990

## Looking Ahead September

24 Baptist Men's Golf Tournament, Burns Park, North Little Rock (Bhd)

25-26 State Building Conference, Geyer Springs First Church, Little Rock (SS)

25-26 State Sunday School Conference, Geyer Springs First Church, Little Rock (SS)

27-Oct 4 Sunday School Preparation Week (SBC)

28-Oct. 1 National CWT Seminary, Pine Bluff South Side Church (Bv)

## October

2-3 BiVo/SMC Pastors & Wives Conference, Little Rock Olivet Church (CLS)

2-4 BSU Convention (BSU)

3 Concord Association CP Supporter Training, Booneville First Church (Ad)

4 Bold Mission Thrust Launch Day (SBC)

6 State BMPT Committee Meeting, Baptist Building, Little Rock (Ad)

8 OBU Board of Trustees meeting (OBU)

10 Vol/PT Music Leadership Workshop, McGehee First Church (M)

12-16 Annual Associational Meetings (Ad)

12-16 Senior Adult Chautauqua, Ridgecrest, NC (DT)

15-16 Master Singers/Singing Women, OBU (M)

15-16 Prayer Partners Meeting, OBU (Ad)

17-21 Guatemala City Church Crusade (Bhd)

25 National & SBC Fellowship, El Dorado West Side Church (NB)

26-27 Church Secretary Conference, North Little Rock Park Hill Church (DT)

26-27 Church Media Library Conference, North Little Rock Park Hill Church

26-27 State Prayer Ministry Workshop, North Little Rock Park Hill Church

30-31 Associational Brotherhood Meeting, Cotter (Bhd)

**GROW**  
**CHURCHES**

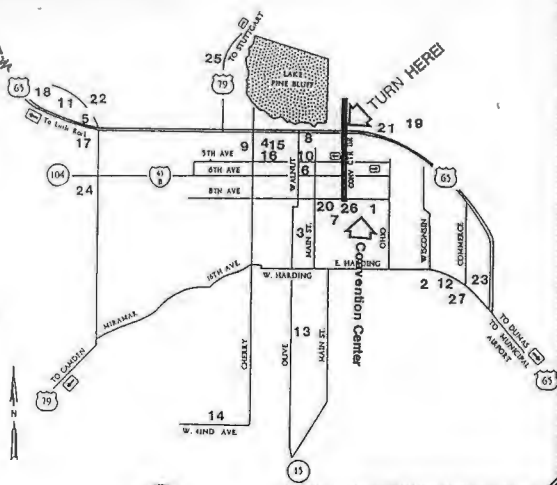
**CHANGED LIVES IN GROWING CHURCHES**



# PINE BLUFF

## AT A GLANCE

1. CONVENTION CENTER
2. ADMIRAL BENBOW
3. ARTS CENTER
4. BEN PEARSON BLOCK
5. BEST WESTERN THE INN
6. CHAMBER OF COMMERCE
7. CITY HALL
8. DEXTER HARDING HOUSE  
(Tourist Information Center)
9. DUBOCOAGE HOME
10. EXECUTIVE INN
11. HESTAND STADIUM
12. HOLIDAY INN
13. JEFFERSON SQUARE
14. JEFFERSON REGIONAL  
MEDICAL CENTER
15. MARGLAND II
16. MARTHA MITCHELL HOME
17. SUPER 8 MOTEL
18. PINE BLUFF MOTEL
19. PORT OF PINE BLUFF
20. POST OFFICE
21. PROJECT 819
22. RIVERPORT
23. THE PINES
24. TOWN HOUSE
25. UAPB
26. HOLIDAY INN  
CONVENTION CENTER
27. WINDSOR INN



**(501) 536-7600**

THREE CONVENTION CENTER PLAZA,  
PINE BLUFF, ARKANSAS 71601



### Best Western Inn

HWY. 65 & BLAKE ST.  
PINE BLUFF, ARKANSAS 71601



**(501) 534-7222**

1-800-528-1234

"Each Best Western  
is independently  
owned and operated"

### ★★ BUSES ★★

The South's  
Largest Selection



Used Mini Buses

**ALL MAKES - ALL MODELS**

New and Used Mini Buses

Sales - Service - Parts

Airport Rd., P.O. Box 9006, Pine Bluff, AR 71611

**Arkansas Bus Exchange**  
501-536-7795 • 800-851-5054

Designed For Your  
Comfort and Convenience  
Insures Quality  
Lodging At Economy Prices  
AX, MC, V, Dis Cards Accepted

Located Near Pines Mall,  
Behind Western Sizzlin

**2902 E. Harding • Pine Bluff**  
**536-2100**

## CHURCH LEADERSHIP SUPPORT

## God's double-duty ministers

by L. B. Jordan

ABSC Church Leadership Support Director

The Apostle Paul provided a pattern for ministers of the gospel which has lasted to this present day. That pattern was one of earning a living at a "secular" vocation while pursuing his calling to ministry. Dale Holloway of the Home Mission Board has referred to those following Paul's pattern as "double-time" ministers.

In those early decades of the settlement of America a "fully salaried church minister" was hard to find. The overwhelming majority of the pastors and evangelists supported themselves by some job other than ministry. The preachers-evangelists of those past days were trappers, farmers, merchants, bankers, cowboys, and soldiers.

Data from the 1990 UCL supplement here in our state indicated that between 40% and 50% of Arkansas Baptist State Convention churches are bivocational. Bivocational is the term used referring to the (1) ministers who also work at another job, in addition to their church position, (2) student ministers and, (3) retired ministers who are serving churches in salaried positions. This is to say that up to half of our 1,293 churches are served by "double-duty" men.

There are some very positive things about a pastor being bivocational. (1) The people of the church usually recognize that they must carry more of the load; (2) The full brunt of financial support for the pastor is not on the church; (3) More of the church's finances can be used for missions and ministry; (4) The pastor may feel more freedom to preach the "whole counsel of God" since his livelihood is not totally derived from the church.

Negative factors may overshadow the

positive, if the negative is highlighted and magnified by pastor or people. (1) Some people may view bivocational pastors as "part-time" preachers when, in reality, they are "double-duty" pastors. (2) Members of the church may view their church as "second-rate" and justify poor quality ministries because of the size, etc. (3) Bivocational pastors sometimes develop a bad spirit toward the fully-salaried pastors because of real or perceived attitudes that seem to put them down. (4) Time is at a premium for bivocational ministries. There is simply not enough time for these valiant men of God to do all that needs doing. (5) Occasionally I meet bivocational ministers who feel embarrassed before family members or other ministers. They view themselves as failures because they are not in a fully-salaried position.

There are some special characteristics that mark the successful bivocational pastor/minister. These include resourcefulness, flexibility, team spirit, family centeredness, continued growth in ministry skills and healthy relationships with other ministers. Ministry of a very high quality is being done by many of these ministers.

As a member of the ABSC Baptist Building team my hat is off to the double-duty, double-time, bivocational ministers of our state. Our whole team is committed to doing all we can to encourage and help those ministers experience joy and fulfillment in their work. (1) In January of 1992 the Arkansas Bivocational Ministers Fellowship was organized. (2) The BIVO/SMC Pastor's and Wives Conference will be held Oct. 2-3, 1992 at Markham Street Church in Little Rock. (3) A bivo newsletter is being prepared for mailing in September, 1992. (4) A special Baptist Building Smaller Membership Church Committee has been functioning for two years and are finding ways to aid in leadership training for SMC churches, most of which are pastored by bivocational pastors.

On the SBC level, Dale Holloway is a full-time consultant for the Home Mission Board with an assignment to aid and encourage bivocational ministers. The "Bivocational Beacon" is a quarterly publication edited by Lee Holloway.

A bright new day has arrived in terms of attitude toward and help for bivocational ministers.

For further information about bivocational ministries please call L.B. Jordan, Church Leadership Support Dept., 501-376-4791 Ext. 5148.

## Should your church be a bivocational church?

Factors that need consideration in answering this question —

"We are a convention of smaller membership churches." I have made this statement and heard it many many times. More than any other factor, the size of the congregation has contributed to whether a church is led by a fully-salaried pastor or a bivocational pastor. Some of our churches which struggle to have a "full-time pastor" are not really financially strong enough to do so and only meagerly support the minister and his family. Several factors need examination by our churches in determining their status.

(1) Does the population of the community warrant a fully-salaried minister? Sparsely settled areas may not offer sufficient opportunity for ministry or for growth to justify expending resources for a fully-salaried minister.

(2) Is your church financially strong enough to adequately support a minister and his family? Many times our churches have been embarrassed because their pastor/staff have been delinquent paying their financial obligations. They may simply be underpaid. Adequate support would include not only salary, but health insurance, housing, travel expense, etc.

(3) Is having a fully-salaried pastor the most appropriate way to expend the church's financial resources? Sometimes churches are able financially to support a fully-salaried ministry, but because of limited membership and population, funds can best be utilized in mission work where there is greater response and potential for growth.

Many of our churches need to be intentionally bivocational. A negative answer to one or more of the questions listed above could give direction to a church that is struggling to determine which direction to go.

A church needs to be careful that worldly pride does not determine their decision.

Prayerful, common-sense thinking based on accurate data should guide a church to the right decision.

ADULT CAMPCRAFT  
RETREATOCTOBER 22-24, 1992  
MT. NEBO STATE PARK  
R.A. COUNSELORS

\$10 covers cost of campsite and materials.

For information contact the  
State Brotherhood Department

501-376-4791, Ext. 5158

## Arkansas All Over

MILLIE GILL

## People

**D. Wade Armstrong**, a native of Hartford, will be in Hong Kong from September through December by invitation to assist churches there with evangelistic efforts.

**Gary Don Curry**, who served as summer youth intern, has joined the staff of Greenwood First Church as minister of youth and will assist with children's work and bus ministry duties. A native of Dallas, Texas, he is a graduate of Stephen F. Austin State University in Nacogdoches, Texas.

**Venus Hamilton** is serving Paragould First Church as interim music director.

**Trey Berry**, assistant professor of history and academic affairs assistant for international programs at Ouachita Baptist University, recently earned his doctor of philosophy degree in history from the University of Mississippi in Oxford.

**Bob Stubbs** is serving Wooster Church as youth director. He is a graduate of the University of Central Arkansas. Danny Hurst is serving the church as interim music director.

**Guy S. Wilson** of Perryville died Sept. 5 at age 77. He was a Southern Baptist minister. Survivors are his wife; two sons, Guy S. Wilson Jr. of Temple, Texas, and Donald J. Wilson of Dallas, Texas; a daughter, Rebecca Anne Keller of Little Rock; and five grandchildren.

**Morgan Cox** began serving Sept. 13 as pastor of First Church in Augusta, coming there from First Church of Sledge, Miss. A native of Dardanelle, he is a graduate of Hendrix College in Conway. Cox and his wife, Elizabeth, have two children, Louis, and Celeste.

**Dan Tibbitt** is serving as pastor of Tichnor Church.

**Kevin Dunn** resigned Aug. 24 as associate pastor of Memorial Church in Waldo. He may be contacted for revivals or interims at P.O. Box 742, Strong, AR 71765; telephone 501-797-2063.

**Jose Seguar** is serving as pastor of the Hispanic Mission in Springdale which is sponsored by University Church. He and his wife, Lidia, have two children, Rafael, and Julia.

**Jimmy Vinson** is serving as pastor of Northside Church in Batesville, going there from Campbell Station Church.

**Mike Merrill** is serving as pastor of Douglas Church, Gould. He is a graduate of Mars Hill College, Mars Hill, N.C., and Southern Baptist Theological Seminary. In addition, he is serving for a year as an ABSCH/Home Mission Board chaplain intern at the Cummins Unit.

**Dennis Davis** is serving as pastor of Temple Church of Crossett.

**Robert Brown** will begin serving Sept. 26 as pastor of First Church of Cotter. He and his wife, Karen, and their children, Rachel, Jessica, Gregory, and Matthew, are moving there from California.

**Lester Nixon**, who is retiring Oct. 13 as director of missions for North Central Association, will begin serving Dec. 1 as pastor of Shady Grove Church near Clinton.

**Stephen Butler** is serving as pastor of Highland Heights Church in Benton, coming there from Lufkin, Texas. He and his wife, Barbara, have two children, Lori, and Brian.

**Don Corbitt** began serving Aug. 30 as pastor of Haw Creek Church near Waldron. He and his wife, Pat, reside in Ratcliff.

**T. Shad Medlin** of El Dorado died Sept. 12 at age 83. His funeral services were held Sept. 15 at First Church of El Dorado where he was a member and where he had served as a deacon and Sunday School teacher. A retired insurance executive, he also had

served as a member of Foreign Mission Board and of the Board of Trustees for Southwestern Baptist Theological Seminary. Survivors are his wife, Dorothy Medlin; two daughters, Tandy Jarvis, and Martha Kennedy, both of Nashville, Tenn.; three stepsons, Drew Sheppard, Jim Sheppard, and Courtney Sheppard, all of El Dorado; a stepdaughter, Nancy Hall of El Dorado; a brother; two sisters; and 12 grandchildren. Memorials may be made to Arkansas Baptist Family Ministries and Child Care Services.

**Andy Wallis** has joined the staff of First Church of Centerton as minister of children and youth. He has been serving as minister of youth for First Church of Noel, Mo.

**Chris Smith** is serving First Church of Atkins as part-time minister of youth. He is a student at Arkansas Tech.

**Rick Balentine** has resigned as pastor of Fair Park Church in Russellville because of health reasons.

## Briefly

Newport First Church will celebrate its 100th year of service Oct. 10-11, launching the celebration on the 10th with a <sup>with Gary</sup> McSpadden Concert in the Newport High School Auditorium. Sunday activities begin at 10:45 a.m. and will feature Arkansas



*The Labor Day holiday weekend provided an opportunity of mission action for Baptist Young Women of Park Hill Church in North Little Rock. The group led a 30 minute worship service Sept. 6 in Burns Park for workers of Summerset, a holiday event of crafts, rides, booths and other activities. The service included a vocal ensemble, a message preached by Bill Bruce, and congregational singing. BYW members also provided workers with a continental breakfast.*

Baptist State Convention Executive Director Don Moore as speaker. Tim Hight is pastor.

**East Side Church of Holly Island** recently observed its fifth anniversary with a noteburning service that signified payment of all church indebtedness. Participating in the noteburning were James Seegraves, Sonny Froman, and Don Moseley. Gary Henson is pastor.

**Brookwood First Church** in Little Rock ordained Richard Aubrey Hand and Bobby L. Fox to the deacon ministry Aug. 30. Pastor Scott R. Johnson was moderator.

**Little Rock Immanuel Church** Acteens recently completed a year of work with a service in which eight received their queen awards, three were recognized as queens with scepters, and three were recognized as queen regents. Also, Michelle Wright, Treva Justice, and Holly Tidball, accompanied by their leader Dorothea Wright, recently served as Acteens Activators at the Hope Migrant Mission Center.

**Harlan Park Church of Conway** recently broke ground for a 5,400 square foot structure that will house a fellowship hall, library, prayer closet, choir room, and classrooms.

**Manning Church** will observe homecoming Sept. 27 with Robert Stag as speaker. The worship service will be followed by a potluck meal and musical program. Jerry George is pastor.

**White Hall First Church** recently honored Pastor Bob Harper and his family with a reception and the presentation of a television on the occasion of his fifth anniversary.

**Centerton First Church** mission team recently spent a week in Grand Mound, Iowa, where they conducted a tent revival, took a census of the town, and did door-to-door evangelism. Their efforts resulted in one profession of faith.

## George Nichols celebrates 30 years

George Nichols recently observed 30 years of service as pastor of Rosa Church when the congregation, family and friends from the surrounding area shared in a celebration service.

Don Moore, Executive Director of Arkansas Baptist State Convention, was speaker with other program personalities including Marvin Reynolds, director of missions for Mississippi County Association, and Johnny Buchanan, Dave Simmons, and Denny Wilson, all members of First Church of Blytheville, a congregation that has assisted Rosa Church over the years.

Celebration activities concluded with a luncheon hosted by Nichols.

## Youth suicide prevention

Immanuel Baptist Church in Little Rock will be the site of the Seventh Annual Arkansas Youth Suicide Prevention Conference on Oct. 10, according to Arkansas Attorney General Winston Bryant. The daylong conference will include workshops, discussions, and speakers who will give information about how to spot the warning signs of suicide and where to obtain help. The curriculum will be designed for youth and adults. Several organizations have joined together to sponsor the conference so that it can be made available to the public at minimal costs. For more information, contact the Arkansas Attorney General's Office at 682-2007 or 1-800-482-8982.

## Albert George Mfg. Co.

Quality Custom Manufacturers of:



- Pulpit Furniture
- Pews • Pew Cushions
- Upholstered Seats & Backs

717 North Cypress, N. Little Rock  
Write: P.O. Box 5700, N.L.R., AR 72119

**501-375-2921**

AUTHORIZED  
**Konica**  
COPIERS • FAX



Ralph Croy and Associates Inc.

701 W. Capitol, Little Rock • 378-0109  
1540 E. Grand Ave., Hot Springs • 623-7392  
1022 W. 6th, Pine Bluff • 534-8811



## Glover Bible Bookstore

Welcome AB Sunday School Conv.

**20% Discount**

with conv. I.D., program and coupon  
(Some items excluded)



- Bibles • Music • Books • Videos
- Commentaries • Church Supplies
- Teaching Helps • Visual Aids
- Gifts • Large Children's Dept.

**562-1195** Call Toll-Free

Mon.-Sat. 9 a.m.-8 p.m. 1-800-489-1210

Southwest Mall (I-30 & Geyer Springs)

## IMPAC Mobility Centers

Van lifts • Stair lifts • Wheelchair lifts

Electric scooters • Lift chairs

Statewide in home sales and service

1-800-421-3314 or 562-3036

## LOW COST LEVEL PREMIUM LIFE INSURANCE

Permanent Term Policy  
Examples of Monthly Premiums  
Male, Non-Smoker

| AGE | \$50,000 | \$100,000 |
|-----|----------|-----------|
| 45  | \$30     | \$51      |
| 55  | 54       | 99        |
| 65  | 117      | 227       |

Lifetime fixed premium and death benefit.  
Issued by Texas Life, a MetLife company.  
**LIFE INSURANCE SAVES®**  
**The Term Specialists**

1 (800) 424-TERM



*The Howies*

## 50th anniversary

Mansel H. and Mary Jo Howie, who were married Sept. 2, 1942 in San Angelo, Texas, celebrated their 50th wedding anniversary Sept. 2. They are members of First Church of Heber Springs where he now serves as a deacon. Howie has served as pastor of Arkansas churches in Delta, Bartholomew, and Little Red River Associations. They are parents of Mikiel Howie and have four grandchildren.



Those celebrating Tupelo's anniversary took up a disaster relief offering for victims of Hurricane Andrew.

## Tupelo First celebrates 125th

by Millie Gill  
Arkansas Baptist

First Church of Tupelo, a church founded in 1867 as a part of the General Baptist Association, celebrated 125 years of service Aug. 30. Facts from 1905, concerning the organization of Woman's Missionary Union, are the first which reveal information on its participation as a Southern Baptist church.

Since that time, even though the membership has remained small, the church has been consistent in attendance and has carried a full SBC program, as well as cooperating with the local association and the Arkansas Baptist State Convention.

This cooperative spirit was continued in the anniversary celebration as members responded to an appeal from Pastor Marvin "Pete" Ogle to provide financial assistance for victims of Hurricane Andrew.

Speakers for the anniversary celebration were Jim Hill, retired director of missions of Calvary Association, and Ledell Bailey, director of missions for Calvary Association, and Former Pastors Rondal D. Merrill of Fultondale, Ala., and Richard Perry of Springdale.

Bill Burnett, also a retired director of missions for Calvary Association, presented the church's history which he had compiled and written. In this information, it was noted the church had been founded in the Pleasant Hill Community, constructing its first building in Tupelo in 1899. This building was destroyed by fire and the pre-

sent building was erected in 1923.

History also shows that pastors' salaries have been as low as \$90 per year, first mission gifts were \$10, and the first associational affiliation was with Woodruff County. It was in 1963 the church became First Church of Tupelo under the leadership of Pastor Louis Gustavus.

A challenge to continue a history for future generations was given by Pastor Ogle as he said, "Doors of opportunities to share the gospel are opening today that have never been open before. As God's people we must be willing to walk through these doors and share the Word of God as our ancestors did.

"I admonish you to begin your missions here at home by becoming an ever learning group of believers, a praying people, and a called out/giving people who have a desire to serve the Lord."

### BOLD MISSION PRAYER THRUST *Answered Prayer*

State Student Ministries Director, David James, reports that "recently our BSU Directors heard a request to pray for the BSU position at Arkansas College. Jackie Burton, the director at Williams Baptist College, went home and at church that night heard that Kristi Taylor was moving to Batesville. Kristi is now our director at Arkansas College (Batesville). Praise the Lord for listening to our request."

Doris Lajune Nash reports a prayer breakthrough in the ministry at Little Rock's Pines Apartments. She states that God's power has been "revealed in many ways. One instance was a fight between several teenage boys." She goes on to say that the fight gave an opportunity "to minister directly and intensely to these young men." God's answers sometimes come back to us in unexpected ways.

100th Anniversary of  
**First Baptist Church**  
Celebration begins **Newport**  
Saturday • October 10th  
7 p.m. at Newport High School Auditorium

Christian Recording Artist Gary McSpadden  
Appearing in concert free to the public

Sunday morning at 10:45 a.m. will begin our celebration service  
at the church



Dr. A. Timothy Hight, pastor

Our featured speaker will be Don Moore,  
ABSC Executive Director

A noon meal will be provided at the  
Newport HS cafeteria

# Sometimes The Most Important Signs Are The Ones We Miss.



The warning signs of suicide are difficult to spot.

That's why Roller Funeral Homes and the Attorney General's Office are again underwriting the Youth Suicide Prevention Conference. The conference will help kids and adults learn suicide warning signs and what to do next.

The conference will be held

from 8:30 a.m.

to 3 p.m.,

Saturday,

October 10, at

Immanuel Baptist

Church in Little Rock. For

more information, please call

one of the Roller Funeral Homes or the Attorney General's office at 1-800-482-8982.

The Arkansas Youth Suicide Prevention Conference is only \$10 for adults and \$5 for students. This includes a box lunch.

Please sign up today.

And show a sign that you care.



**Roller Funeral Homes  
Of Arkansas**

**Citizens Fidelity Company**



ARKANSAS  
YOUTH SUICIDE PREVENTION  
COMMISSION

SOUTHWEST BAPTIST UNIVERSITY

## Missouri school fires chancellor

BOLIVAR, Mo. (BP)—In 1965, James L. Sells joined Southwest Baptist University, Bolivar, as director of academic affairs. Three years later he was named president of the school. Sells was named chancellor of the university in 1979 and continued to serve as the institution's chief executive officer.

On May 31, 1991, Sells retired as CEO of the university but continued his role as chancellor, serving under a contract running through August 1993.

However, that relationship came to a sudden and dramatic conclusion Sept. 3 when the SBU board of trustees announced they could "no longer work together (with Sells) in the best interests of the university."

In a press release handed out to reporters following a five-hour closed-door meeting, the trustees announced, "Dr. James L. Sells has been terminated as chancellor of Southwest Baptist University effective immediately. This action specifically revokes any and all authority or license previously given to Dr. Sells to be associated with the university or to use the university's name in any manner or nature whatsoever."

According to SBU attorney Gary Lynch, the action was approved by the trustees by a vote of 31-1. The school currently has 48 trustees. *Word & Way*, Missouri Baptists' newsjournal, learned the action to sever relationships with Sells was taken Aug. 20 during a special called meeting of trustees. It was reaffirmed in the Sept. 3 meeting with only two dissenting votes.

The announced reason behind the action was the trustees' conclusion that Sells made "a deliberate attempt ... to interfere with the proper working of the board of trustees to find and hire a president of the university."

### Sells releases 'open letter'

What began as an apology for his campaign to prevent the election of a new president became a broadside attack by the recently dismissed chancellor on the school's trustees.

In a document titled, "An Open Letter to the Community," James E. Sells, dismissed as SBU chancellor Aug. 20, began, "I very much regret the hurt and humiliation I have brought to my family, friends, the community and Southwest.... Clearly my poor judgment and action have hurt many people and I am sorry."

On page six of the seven-page document, Sells wrote, "I do think it is a tragedy

28 of 50 trustees can make such a hard decision (his dismissal) when their own attendance records are so poor, when many are only nominally involved in developing the university, while others are overtly involved in managing the school, and when trustees put restraints on themselves and then walk out of the room and violate their own rules."

In the pages in between, Sells:

- Claimed his firing resulted from the SBC political struggle spilling over into the trustee board of the Bolivar, Mo., school.

- Said the action was the result of trustee anger stemming from the firing of SBU President J. Edwin Hewlett in 1990.

- Accused board chairman Wayne Gott and presidential search committee chairman Walter Rarrick of violating trustee instruction.

- Expressed concern the search committee was "becoming weary."

- Explained why he authored anyo-

mous letters attributed to students and faculty as well as passed on false information about the activities of the search committee.

### Faculty unanimously affirms trustee actions

In two separate actions, the SBU faculty of Southwest Baptist University commended school trustees for their dismissal of former chancellor James E. Sells and called for the termination of all others "involved in the subversion of the presidential search process."

The Faculty Chamber, SBU's officially recognized faculty organization, voted unanimously to commend the board of trustees for dismissing Sells.

The Association of Tenured Faculty at SBU also unanimously adopted a statement calling the trustee action against Sells "both right and necessary."

Both organizations adopted their respective statements Sept. 9.

(This coverage compiled from articles written by Bob Terry, editor of the *Missouri Word & Way*.)

# Michael's

## SUNDAY BUFFET

### Featuring:

Complete Salad Bar with ASSORTED SALADS and FRESH FRUIT  
Hot Vegetables, Including TURNIP GREENS,  
BLACK-EYED PEAS and Other Local Favorites

Large Selection of Hot Entrees, Featuring FRIED CHICKEN and  
CATFISH, Hand Carved ROAST BEEF, BAKED HAM, AND TURKEY

Fresh Made Desserts, Including COBBLERS & BREAD PUDDING

**ALL FOR ONLY \$6.95 - CHILDREN 1/2 PRICE**

10% DISCOUNT FOR SENIORS  
AND GUESTS WITH CHURCH BULLETINS

11:00 A.M. 2:00 P.M.

*Holiday Inn*   
Otter Creek

where I-30 and 430 meet

**HOTEL AND CONFERENCE CENTER**  
453-2300

## \$500,000 in relief funds approved

by Sarah Zimmerman

SBC Home Mission Board

ATLANTA (BP)—The executive committee of the Home Mission Board directors authorized up to \$500,000 for relief ministries for victims of this fall's natural disasters.

The \$500,000 is in addition to \$115,000 the board released for relief ministries in August and September.

In their September meeting, executive committee members also received a financial report showing year-to-date income exceeding the budget. Bob Banks, executive vice president, said receipts from the Cooperative Program were the only source of income that did not exceed the budget. The Home Mission Board's Cooperative Program receipts were down \$600,000 from the amount budgeted, Banks said.

The board also approved 20 new missionaries while the chaplains commission endorsed 26 chaplains.

The \$115,000 already spent this year in disaster relief came from a \$50,000 disaster relief fund, \$25,000 from hunger relief funds and \$40,000 from reserve funds. The additional \$500,000 will come from reserve funds, executive committee members were told.

The \$500,000 will be distributed through state Baptist conventions in Florida, Louisiana and Hawaii. The fund also will assist victims of the typhoon which hit Guam, where churches are part of the Hawaii Baptist Convention.

Paul Adkins, retired vice president for ministry who continues to work at the Home Mission Board on a contract basis, is going to Hawaii to help assess the needs there and in Guam. Larry L. Lewis, HMB president, and Larry Martin, vice president for ministry, will travel to Florida to survey the damage and discover ways the Home Mission Board can help.

"We're doing our best to respond,"



A little girl clings to military-style ready-to-eat meals distributed by Southern Baptists in Homestead, Fla.

## It's not just another building.

## It's your church.

A church has different requirements than most other buildings an insurance company covers. It represents the shared commitment and sacrifice of many people... it's an invaluable emotional investment.

Church Mutual has specialized in insuring churches for nearly 100 years. Today we are the nation's largest insurer of churches, protecting over 5,800 Southern Baptist churches alone.

We know you can never forget the enduring importance of your church in the lives of your congregation. We take the critical step of getting to know your church firsthand to learn your unique needs and concerns.

To learn about the difference that our personalized, specialized expertise and competitive insurance coverage can mean to you and your congregation, write or call us at 1-800-542-3465.



### The Specialist

Church Mutual  
3000 Schuster Lane  
P.O. Box 357-S  
Merrill, WI 54452

Lewis said. "As tragic as these disasters are, they do become tremendous opportunities for ministry and witness."

Martin said he was told 80 percent of the town of Homestead will be bulldozed because it was destroyed beyond repair. He was also told 40 percent of the people will leave the area because the hurricane destroyed their income sources.

In addition to meeting community needs, the Florida Baptist Convention is concerned about the future of the churches that were destroyed or severely damaged by Hurricane Andrew, Martin said.

The devastated economy also will wreck the economic base of the church, Martin said, and state convention staff is concerned about the emotional well being of the church staff members.

The Home Mission Board's disaster relief fund began 25 years ago when Adkins took \$50,000 to Alaska to assist victims of a flood in Fairbanks.

Each year \$50,000 is designated for disaster relief. Adkins said the money comes mostly from Annie Armstrong Easter Offering gifts.

But the fund is depleted every year, said Adkins, who added, "I can't remember a year when we haven't spent more than \$50,000" in disaster relief.

(Additional information on Arkansas disaster relief efforts will be covered in the next edition of the ABN)



## SOMALIA

**Thousands of lives lost daily**

by Art Toalston

Baptist Press

NASHVILLE (BP)—Each day in Somalia 1,000 to 5,000 people die of starvation — and the human tragedy in the drought- and war-devastated African country is unfolding faster than world hunger agencies can respond.

The Southern Baptist Foreign Mission Board has channeled more than \$115,000 in hunger and relief funds to workers in Kenya and Yemen aiding Somali refugees since March 1991. Board officials now expect to send far greater amounts of aid in the coming months.

"Somalia is the most desperate, intense place of human suffering in the world today," said Graeme Irvine, president of World Vision International, which is scheduled to launch its first two feeding stations in Somalia Sept. 4.

A 10-member World Vision team, including several Americans, will staff the centers in Baldoa, a city of some 100,000 people in central Somalia where an estimated 300 to 700 people die daily of starvation.

"They're going in at extreme risk, knowing the dangers involved," said Jim Newton, spokesman at World Vision's U.S. headquarters in Monrovia, Calif., who recently visited the country currently ablaze in a multi-sided, terror-filled civil war. Men and youth with automatic rifles — some 20,000 to 30,000 in Somalia's largest city, Mogadishu, alone — rob relief caravans at will in the now-lawless country the size of California.

World Vision intends to open additional feeding centers in Somalia, Newton said, qualifying, "We're going to take it a step at a time and meet the needs as funds become available."

The Christian relief agency has budgeted \$10.8 million for food distribution and agricultural development for Somalia during the coming year — four times its 1992 outlay for ministry there.

"As many people die every day in Somalia as in a month in Yugoslavia, despite the constant media attention to the Yugoslav conflict," Irvine stated.

Two years of warfare in this 99-percent-plus Muslim country has placed an estimated 1.5 million of its 8.3 million people, mostly unarmed women and children, "in direct threat of starvation," according to Bread for the World, an anti-hunger lobby based in

Washington. Several million more Somalis are hungry and malnourished.

The lobby's Africa policy analyst, Sharon Pauling, is asking "why greater thresholds of suffering and horror must be reached in Africa before camera crews arrive and decisive action is taken by the international community."

"We have two years supply of weapons," one Somali fighter has been quoted as saying, "but only one year supply of people."

Beyond the drought now gripping Somalia and fellow Horn of Africa countries Ethiopia and Djibouti as well as other parts of eastern and southern Africa, Somalia's civil war has sidelined its farmers. Only 5 percent of their usual crops were planted last year, according to Bread for the World.

War has terminated government services, according to reports, and closed all schools, except those operated by mosques for study of the Koran.

Additionally, the strife made refugees of an estimated 1 million Somalis. Up to 500,000 Somalis have crossed into Ethiopia and 300,000 into Kenya while some 65,000 have sailed in rickety boats across the Red Sea to Yemen, according to estimates.

Just to meet minimum needs for the refugees, some \$94 million in relief funds is needed this year, according to the office

of the United Nations High Commissioner for Refugees.

In August, the United States began an airlift of 145,000 tons of food to Somalia where, according to one relief organization, some 40,000 tons of food is needed monthly, apart from food needs in other countries where Somalis have taken refuge.

***'We have two years supply of weapons, but only a one year supply of people.'***

The International Committee of the Red Cross is at the forefront of still-developing food distribution efforts in Somalia. In addition to World Vision, other relief groups in the country include World Concern of Seattle; Doctors Without Borders from France; Save the Children from England; and Concern from Ireland.

Bread for the World is urging the United Nations to deploy additional security forces to protect food and relief workers inside Somalia. At present, some 500 Pakistani soldiers are there in behalf of the United Nations.

For additional information about the crisis in Somalia, contact the Foreign Mission Board, Box 6767, Richmond, VA 23230, (804) 353-0151; World Vision, 919 W. Huntington Drive, Monrovia, CA 91016, (818) 301-7782; or Bread for the World, 802 Rhode Island Ave. NE, Washington, DC 20018, (202) 269-0200.



## How To Improve Your Church Sound

Sure you can see them speaking, singing and talking.

But can you clearly hear them?

Now your church can have a sound system that provides clear and reliable communications. Designed by experienced sound pro's, your church can have a system that is custom designed to achieve optimum performance levels of clarity.

Not hearing clearly is frustrating, annoying and a source of irritation. But thanks to modern technology, advancements in staff of sound professionals, we are able to improve your sound and put the hearing - and the pleasure - back in your important church events.

# MP

**PRODUCTIONS, INC. 501-562-7425**

Call: Ken E. Newberry  
Sound Contracting Division  
System Design • Installation • Service

6301 Murray St., Little Rock, AR 72209 • FAX: 562-7521

# European Baptist, FMB leaders sign pact

by Mike Creswell

SBF Foreign Mission Board

HAMBURG, Germany (BP)—European Baptists and the Southern Baptist Foreign Mission Board have declared peace.

Leaders from both sides signed a 10-point pact during a Sept. 11-12 meeting, pledging future cooperation, partnership and joint ministry throughout Europe. The signers, who met at a hotel outside Hamburg, Germany, were seven European Baptist Federation leaders and six Foreign Mission Board representatives, including three board trustees.

The "Hamburg Agreement" is intended to end the breaking of fellowship that resulted from the Foreign Mission Board's defunding of the Baptist Theological Seminary at Ruschlikon, Switzerland, last year.

As the leaders reviewed events leading up to the defunding, "both parties increasingly recognized the extent of the damage caused by the decision, but they experienced by the grace of God forgiveness in Christ and reconciliation," the agreement stated.

European Baptists indicated their intention to work both with the Foreign Mission Board and the Cooperative Baptist Fellowship, the organization of Southern Baptist moderates, which now has at least eight missionaries, all former Foreign Mission Board missionaries, assigned to Europe.

FMB leaders reconfirmed an earlier trustee vote to the effect the EBF's partnership with the CBF "would not adversely affect relationships with EBF." The Europeans said they would discourage competition in developing relationships with both bodies.

Both sides agreed that "wherever possible" requests for career personnel and projects involving volunteer personnel in Europe should be arranged in consultation with Southern Baptist missionaries and European Baptist unions and/or the European Baptist Federation.

The session marked the first time since the Ruschlikon defunding both sides have sat down together to discuss future work. The European Baptists wanted to wait until the Foreign Mission Board had elected a new regional vice president to take part in discussions. FMB trustees hurried the election of Samuel M. James as vice president for Europe, Middle East and North Africa so the discussions could take place sooner, said John Jackson, FMB trustee chairman.

EBF leaders "heartily endorsed" the elec-

tion of James, the agreement said, recognizing in him "the kind of attitude to mission and Christian spirit which should lead to fruitful cooperation."

James, a 30-year veteran of Southern Baptist foreign missions, replaced Iam Ballenger, who took early retirement earlier this year. A search is on for an area director for Europe to replace Keith Parker, who also took early retirement.

James attended the Hamburg meeting with Don Kammerdiener, FMB executive vice president, and Hal Lee, associate to the area director for Europe. Kammerdiener will become interim FMB president Nov. 1, following the Oct. 31 retirement of President R. Keith Parker.

FMB trustees Jackson, Skip Smith and Bill Blanchard again told the European Baptists the trustees have no "global agenda" to impose "fundamentalist" standards on Europe — an allegation made by Ballenger and Parker when they announced their retirements in a controversial press conference.

"The FMB representatives also stated that the principal objective of their board continues to be evangelism which results in indigenous Baptist churches," the agreement stated.

Jackson is pastor of First Baptist Church in Fairfield, Calif. Smith, chairman of the FMB's committee on Europe, the Middle East and North Africa, is pastor of Calvary Baptist Church in Houston.

Blanchard, vice chairman of the same committee, is pastor of First Baptist Church in Soddy-Daisy, Tenn.

The agreement will be considered by FMB trustees at their Oct. 12-14 meeting and by the European Baptist Federation's executive council at its Sept. 28-Oct. 1 meeting. Leaders on both sides said they expect little trouble in securing the pact's endorsement.

A high point in the Hamburg session came the morning of Sept. 12, when Jackson and Smith again apologized to the Europeans for how the Ruschlikon defunding was handled. The European leaders then expressed forgiveness. Trustees had spoken separately about this with European Baptist leaders earlier this year and expressed regret. But both sides agreed at Hamburg the time was right for a more complete reconciliation.

Wide-ranging discussions were "frank and open and carried out in an atmosphere of Christian love and included times of prayer and devotions," according to the agreement.

The leaders expressed pleasure with the meeting's outcome.

"We are excited about the possibilities for the future," Kammerdiener and Jackson said in a joint statement after the meeting. "This agreement is based not only upon common purposes, but also on the friendship we share in Christ. We are moving forward together with the realization that there are no differences between us. We all agree on the great spiritual needs that exist on the continent of Europe and we are going to work together to meet those needs."

Karl-Heinz Walter, EBF general secretary, said he was "very grateful for what we could achieve by the grace of God. It will signal a new beginning in our relationship."

Walter emphasized the agreement was not the result of a long debate, "but an expression of a spiritual event which we all experienced." He said he expects unanimous approval of the agreement from both the EBF executive council and FMB board of trustees.

"I hope that all other Southern Baptists in their involvement in Europe will respect this likewise," he said.

## Classifieds

**Bus for Sale — 25-passenger 1977 Chevrolet with Thomas body, good condition and only 40,000 miles. Calvary Baptist Church, Searcy. Call Michael 268-2088.**

**Needed — Person to live with retired preacher and wife, who has Parkinson's Disease. Room and board plus \$100 per week. Call 821-3485.**

**Position Available — for bi-vocational Music/Youth Director at a smaller membership Baptist Church. Please send resume to: North Crossett Baptist Church, P.O. Drawer N, Crossett, AR 71635.**

Classified ads must be submitted in writing to the ABN office no less than 10 days prior to the date of publication desired. A check or money order in the proper amount, figured at 90 cents per word, must be included. Multiple insertions of the same ad must be paid for in advance. The ABN reserves the right to reject any ad because of unsuitable subject matter. Classified ads will be inserted on a space-available basis. No endorsement by the ABN is implied.



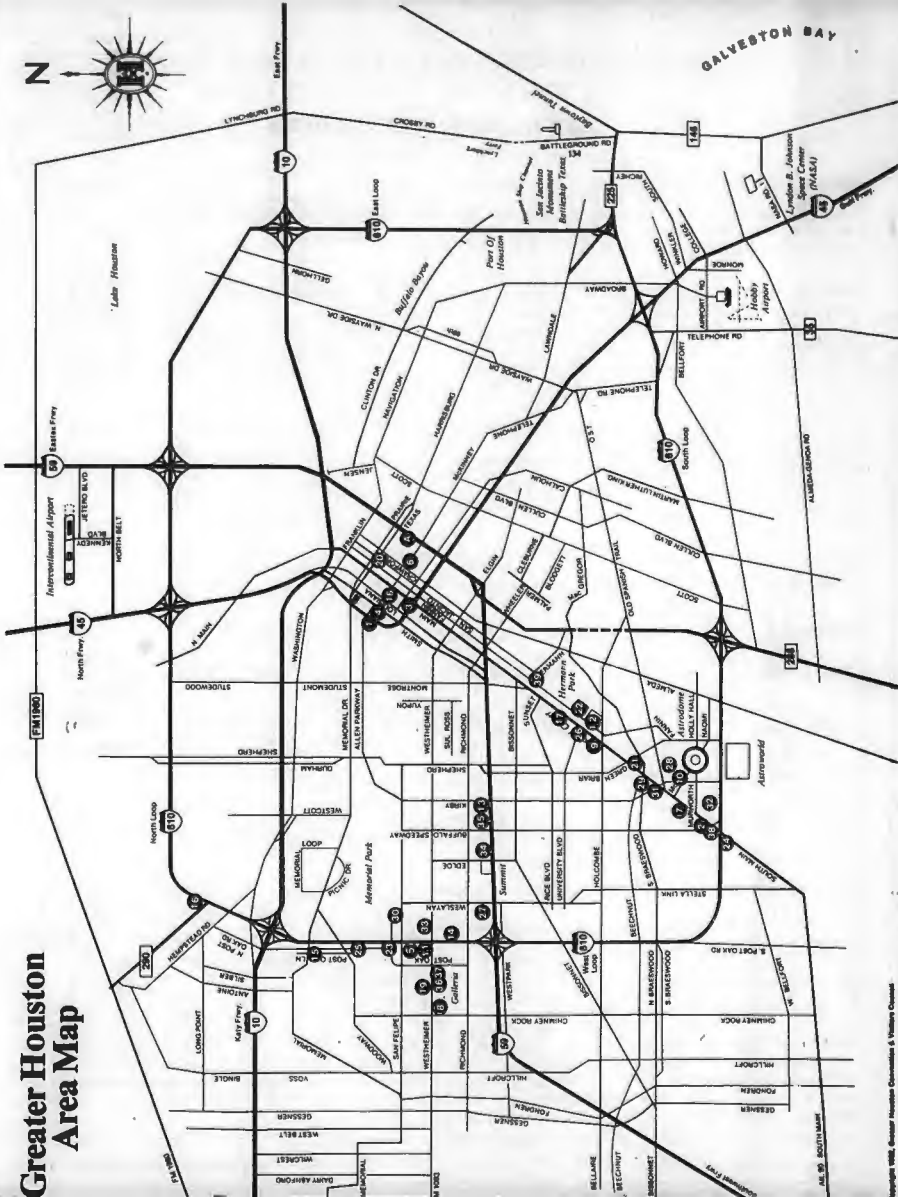
Quality  
Van Sales

Used 12 and 15 passenger vans, special prices to churches. 501-268-4490, 1500 E. Race, Searcy 72143. Larry Carson

**SOUTHERN BAPTIST CONVENTION • JUNE 15-17, 1993**  
**HOUSING GUIDE • HOUSTON TEXAS**  
**OFFICIAL HOTEL LIST AND RATES**

| Map Code | Hotel Code | Hotel                                    | Single   | Double   |
|----------|------------|--|----------|----------|
| A        |            | George R. Brown Convention Center        |          |          |
|          |            | <b>Downtown Area</b>                     |          |          |
| 1        | ALPI       | Allen Park Inn                           | \$ 69.00 | \$ 69.00 |
| 3        | DID        | Days Inn Downtown                        | 55.00    | 75.00    |
| 4        | DBH        | Doubletree at Allen Center               | 92.00    | 102.00   |
| 6        | FSDT       | Four Seasons Hotel Houston               | 123.00   | 123.00   |
| 18       | HR         | Hyatt Regency Houston (SBC Headquarters) | 99.00    | 99.00    |
| 20       | LAN        | The Lancaster                            | 120.00   | 125.00   |
|          |            | <b>Medical Center Area</b>               |          |          |
| 9        | HSB        | Harvey Suites Houston Medical Center     | 75.00    | 80.00    |
| 12       | HIMC       | Holiday Inn Medical Center               | 65.00    | 70.00    |
| 17       | HPH        | Houston Plaza Hilton                     | 95.00    | 95.00    |
| 22       | MHMC       | Marriott Medical Center                  | 105.00   | 115.00   |
| 26       | PARK       | Park Inn International                   | 50.00    | 55.00    |
| 39       | WARH       | The Wyndham Warwick                      | 78.00    | 78.00    |
|          |            | <b>Astrodome Area</b>                    |          |          |
| 2        | CM         | Chief Motel                              | 45.00    | 45.00    |
| 7        | GM         | Grant Motel                              | 33.00    | 36.00    |
| 10       | HIAD       | Holiday Inn Astrodome                    | 72.00    | 72.00    |
| 21       | MMH        | Marriott Astrodome                       | 75.00    | 85.00    |
| 24       | MOT6A      | Motel 6 South Loop West                  | 27.95    | 33.95    |
| 28       | RSH        | Radisson Suite Hotel                     | 60.00    | 60.00    |
| 29       | RI         | Residence Inn by Marriott                | 90.00    | 115.00   |
| 31       | ROA        | Roadrunner Astrodome                     | 25.00    | 25.00    |
| 32       | SHEA       | Sheraton Astrodome Hotel                 | 75.00    | 75.00    |
| 38       | WHMH       | White House Motor Hotel                  | 45.00    | 45.00    |
|          |            | <b>Greenway Plaza Area</b>               |          |          |
| 13       | HIGP       | Holiday Inn Greenway Plaza               | 55.00    | 60.00    |
| 27       | RIGP       | Ramada Inn Greenway Plaza                | 54.00    | 59.00    |
| 34       | SGP        | Stouffer Presidente Hotel                | 80.00    | 80.00    |
| 35       | TRGP       | Travelodge Hotel Greenway Plaza          | 66.00    | 72.00    |
|          |            | <b>Galleria Area</b>                     |          |          |
| 5        | DBPO       | Doubletree at Post Oak                   | 105.00   | 115.00   |
| 8        | GQII       | Guest Quarters Suite Hotel               | 99.00    | 99.00    |
| 11       | HICP       | Holiday Inn Crowne Plaza                 | 87.00    | 87.00    |
| 14       | HIWL       | Holiday Inn West Loop                    | 60.00    | 65.00    |
| 15       | HOUS       | Houstonian Hotel                         | 80.00    | 90.00    |
| 19       | JWM        | J.W. Marriott Houston Galleria           | 108.00   | 108.00   |
| 23       | MHG        | Marriott West Loop Galleria              | 97.00    | 97.00    |
| 25       | OMNI       | Omni Hotel                               | 115.00   | 115.00   |
| 30       | RC         | Ritz Carlton Houston                     | 110.00   | 125.00   |
| 33       | SGH        | Sheraton Grand Hotel                     | 80.00    | 80.00    |
| 36       | WGH        | Westin Galleria (WMU Headquarters)       | 97.00    | 97.00    |
| 37       | WO         | Westin Oaks                              | 97.00    | 97.00    |
|          |            | <b>North Loop Area</b>                   |          |          |
| 16       | HM         | Houston Medallion                        | 79.00    | 79.00    |

# Greater Houston Area Map



|  |
|--|
|  |
|--|



OFFICIAL

**SBC HOUSING REQUEST FORM**

• PLEASE READ CAREFULLY •

MAIL TO:

SBC HOUSING BUREAU  
Housing Convention and  
Visitors Bureau  
3300 Main Street  
Houston, TX 77002-6396

RESERVATION CUTOFF DATE:  
MAY 7, 1993

- PLEASE PRINT OR TYPE ALL ITEMS TO ASSURE ACCURACY.
- COMPLETE EACH PART BELOW IN DETAIL FOR CORRECT AND RAPID COMPUTER PROCESSING.
- SHOULD MORE THAN ONE ROOM BE NEEDED, FORM MAY BE DUPLICATED OR SUPPLEMENTAL ROOM LIST MUST BE ATTACHED USING SAME FORMAT AS IN PART III.
- ALL CONFIRMATIONS WILL BE SENT TO INDIVIDUAL INDICATED IN PART I.

**PART I**

NAME OF PERSON REQUESTING ROOMS (Note: This person must be one of the individuals who will be occupying the room):

|  |  |  |  |
|--|--|--|--|
|  |  |  |  |
|--|--|--|--|

(FIRST NAME)

(M.I.)

(LAST)

|  |  |  |  |
|--|--|--|--|
|  |  |  |  |
|--|--|--|--|

(NAME OF CHURCH)

|  |  |  |  |
|--|--|--|--|
|  |  |  |  |
|--|--|--|--|

(STREET ADDRESS OR P.O. BOX NUMBER WHERE CONFIRMATION IS TO BE SENT)

|  |  |  |  |
|--|--|--|--|
|  |  |  |  |
|--|--|--|--|

(CITY)

|  |  |
|--|--|
|  |  |
|--|--|

(STATE)

|  |  |  |  |
|--|--|--|--|
|  |  |  |  |
|--|--|--|--|

(ZIP)

|  |  |  |  |
|--|--|--|--|
|  |  |  |  |
|--|--|--|--|

(AREA CODE) (PHONE NUMBER)

**PART II**

INSTRUCTIONS: Select six hotels/motels of your choice. No request will be processed without six choices.

FIRST CHOICE     (HOTEL CODE)      SECOND CHOICE     (HOTEL CODE)      THIRD CHOICE     (HOTEL CODE)

FOURTH CHOICE     (HOTEL CODE)      FIFTH CHOICE     (HOTEL CODE)      SIXTH CHOICE     (HOTEL CODE)

When making your selections, which is more important to you:  PRICE or  LOCATION?**PART III**

- INSTRUCTIONS:
1. PRINT OR TYPE NAMES OF ALL PERSONS OCCUPYING EACH ROOM.
  2. SELECT TYPE ROOM DESIRED WITH ARRIVAL AND DEPARTURE DATES.
  3. PRINT OR TYPE LAST NAME FIRST.

| OCCUPANTS' NAMES (PRINT LAST NAME FIRST): | Check type of room desired:                               | Arrival Date: _____<br>Arrival Time: _____<br>Departure Date: _____<br>Other: _____ |
|---|---|---|
| 1. _____                                  | <input type="checkbox"/> Single (1 bed/1 person)          |   |
| 2. _____                                  | <input type="checkbox"/> Double (1 bed/2 persons)         |   |
| 3. _____                                  | <input type="checkbox"/> Double/Double (2 beds/2 persons) |   |
| 4. _____                                  | <input type="checkbox"/> Triple (2 beds/3 persons)        |   |
|   | <input type="checkbox"/> Quad (2 beds/4 persons)          |   |

**IMPORTANT:** No phone orders will be accepted. Hotel locations are shown on accompanying map. Make a photocopy of this form for your files. SBC Housing Bureau processes reservations in order of date mailed. Confirmations will come directly from your hotel. DO NOT SEND DEPOSITS WITH RESERVATIONS. If rooms are not available at hotels of your choice, comparable reservations will be made at another cooperating hotel. If rate requested is not available, next available rate will be assigned. Changes or cancellations should be sent in writing to the SBC Housing Bureau.

## Convention Uniform

### Know what you ask for

by Andrew Setliffe, Calvary Church, Little Rock

**Basic passage:** 1 Samuel 7:15-8:22

**Focal passage:** 1 Samuel 8:1-9, 18

**Central truth:** When you reject God's leadership you have to pay the price.

Verses 1-3. Samuel was one of the greatest men that ever lived, but he was a failure in the important matter of rearing his sons, Joel and Abijah. When he made them judges, they took bribes and were led by their greed to give unjust decisions.

Verses 4-7. Since Samuel had no worthy successor in his family, and wanting to be like the nations around them, the Israelites asked Samuel to anoint a king over them. In this trying hour, Samuel turned to God. We cannot but wish that the leaders of our nation trusted in God and were as ready to turn to him for guidance. When will you and I ever learn to take problems, needs, decisions, to the Lord first instead of first trying to work them out without his leadership?

Verses 8-9. Samuel warned Israel of the tyranny and oppression that would come as result of rejecting God as their King and submitting to an earthly king. But, he pleaded in vain and God told him to grant their request. They were dissatisfied with being a "peculiar" people. God wanted them to be different from other nations just as he wants us to be different from the world. God allowed the people to have their own way although unhappiness awaited them as a result of it.

But, before choosing a king, the people must be given a chance to change their mind. Few of us learn by the experiences of others and we want to try our own way; and God permits us and shows us how much better it is to take his way than our own.

Verses 18. The Israelites needed to know the risk they were taking in asking for a king and Samuel told them plainly. When we take the wrong course, we do it in spite of God's warnings about the consequences. If we insist on choosing other ways, we must be ready to take the penalty. God never imposes his will on us, and we can shut him out in preference to our own choices. This does not mean that we have abolished God's favor upon us; but it does mean we have denied to ourselves the tremendous blessings of living in his will.

This lesson treatment is based on the International Bible Lesson for Christian Teaching, Uniform Series. Copyright International Council of Education. Used by permission.

## Life and Work

### Hold on!

by Barry King, Grand Avenue Church, Hot Springs

**Basic passage:** 1 Timothy 1:1-2, 12-19

**Focal passage:** 1 Timothy 1:1-2, 18-19

**Central truth:** Faith and conscience are vital weapons in spiritual warfare.

1 Timothy begins with a salutation which identifies Paul as the author and Timothy as the recipient. Paul relates to Timothy as a father relates to a son (2 Ti. 1:2). Timothy relates to Paul as a son relates to a father (Ph. 2:22). The son is facing a unique challenge in Ephesus. The father writes to give encouragement and instructions.

Timothy was facing a grueling spiritual battle. He had been given a two-fold assignment. He was to contradict the false teachings of men such as Hymeneus and Alexander, and he was to counteract the negative influence which these men had exerted in the Ephesus church. In the face of this conflict, Paul admonished Timothy to hold on to two vital weapons.

Timothy was to hold on to faith. Some had turned aside from the faith (1 Ti. 1:6). Some had departed from the faith (1 Ti. 4:1). Some had erred from the faith (1 Ti. 6:10, 21). The faith of some had been overthrown (2 Ti. 2:18). Some were reprobate concerning the faith (2 Ti. 3:8). In sharp contrast to these, Timothy was charged to hold on to the faith.

Timothy was to hold on to a good conscience. On several occasions Paul linked faith with conscience (1 Ti. 1:5, 3:9). He even indicated that "departing from the faith" could result in a "conscience seared with a hot iron" (1 Ti. 4:1-2). Obviously, Paul taught that a person's behavior is determined by his belief. Timothy was challenged to hold on to a good conscience by adhering to standards of morality consistent with the teaching and example of Jesus.

We, too, are facing a grueling spiritual battle. We have been given the responsibility of contradicting the false teachings of humanism, materialism, and secularism, and we have been given the responsibility of counteracting their negative influence in the church and in society as a whole.

We must combat heretical teachings with the faith of the gospel. We must seek to reverse the negative influence of these teachings through conscientious Christian living.

This lesson is based on the Life and Work Curriculum for Southern Baptist Churches, copyright by the Sunday School Board of the Southern Baptist Convention. All rights reserved. Used by permission.

## Bible Book

### Righteousness Needed

by Jack Kwok, Director of Cooperative Ministries with National and Southern Baptists ABSC

**Basic passage:** Romans 1:1-32

**Focal passage:** Romans 1:16-32

**Central truth:** Fallen humanity needs God's righteousness which is the power of the gospel.

The power of the gospel to save fallen humanity emanates from the righteousness of God. Righteousness is an essential element in the personhood of God. It is the perfection of justice and morality.

This passage describes how far humanity has fallen from the position of righteousness and the consequent judgment of God's wrath upon unrighteousness.

Righteousness is needed to stay the wrath and judgment of God. Verses 18-23 give the reasons for God's wrath, and verses 24-32 declare the results of God's wrath.

Reasons for God's wrath stem from the revelation and rejection of God. God has revealed himself to all humanity (18-20). Instead of receiving his self-revelation, humanity has rejected God (21-23). Not only has God been rejected, some have grossly perverted his self-revelation. Thus, God's righteousness requires judgment or wrath upon all unrighteousness.

Results of God's wrath (24-32) as pronounced in this passage are more indirect than direct. God removed his benevolent restraint and allowed humanity to flounder upon their lusts. This constitutes the indirect judgment or wrath of God.

Four stages comprise God's wrathful judgment: impurity, idolatry, intemperance, and insanity. They appear to occur in sequential couplets. The grammar of 24-25 indicates that they intentionally chose to worship false gods and their idolatry encouraged their impurity.

After impurity and idolatry come moral intemperance and mental insanity (26-28). Heterosexual adultery and homosexual activity evoke the wrath of God. However, these verses place homosexuality as more depraved than heterosexual fornication. Homosexuality gives way to a reprobate mind: one void of reason or shame.

All of these stages vividly portray immorality which produces injustice (29-32): unrighteousness. Righteousness needed introduces the reader to the treatise of Romans: The Righteousness of God.

This lesson treatment is based on the Bible Book Study for Southern Baptist Churches, copyright by the Sunday School Board of the Southern Baptist Convention. All rights reserved. Used by permission.

## Convention Uniform

### *Your heart is exposed*

by Andrew Setliffe, Calvary Church, Little Rock

Basic passage: 1 Samuel 2:1-7; 5:1-5; 16:1-13

Focal passage: 1 Samuel 16:1-13

Central truth: God sees not as men see; the Lord looks on the heart.

As this passage opens, we see Samuel remembering and clinging to the past. Samuel is mimicked by present-day church members who have room in their hearts for only one pastor, staff member, or teacher.

Saul had been a man of striking appearance and seemingly all the qualities of leadership, but he failed. Samuel still clung to Saul. Do we allow grief or past disappointments to prevent us from doing what God wants us to do in the present?

How often do we jump too quickly to place someone in a position for which he or she is not suited?

What kind of person was God looking for? The values of the ancient Near East must have been much like those of our day. Youth and good looks are an obsession with our culture.

What is the difference between man's and God's basis for choosing leaders? Samuel followed tradition in expecting the eldest son to be chosen. What are our expectations for leaders?

God's choice was as definite as was his refusal of Eliab and the brothers. God has a plan for every life. He chose David as his servant. The fact that someone else has more skills for a particular job and is selected instead of us should not in any way affect our self-esteem.

"The Spirit of the Lord" refers to the divine wisdom and characteristics David later exhibited.

Do we consciously apply the terms "called" or "chosen" only to full-time, paid church leaders? Why? Who else is chosen? How does God speak to you in decision making or in answer to prayer or in guidance? God reveals enough for our first step, then we step out in faith for further instructions.

How important is our availability to be chosen? We are all chosen in Christ; but only those who make themselves available to God have the joy to performing special services for him.

Why are some places of leadership vacant? God has given you a gift or gifts. Are you praying that you will use your gifts?

This lesson treatment is based on the International Bible Lessons for Christian Teaching, Uniform Series. Copyright International Council of Merit. Used by permission.

## Life and Work

### *Qualifications for service*

by Barry King, Grand Avenue Church, Hot Springs

Basic passage: 1 Timothy 3:1-15

Focal passage: 1 Timothy 3:8-10, 12-13

Central truth: The Bible records the qualifications for spiritual leaders.

1 Timothy 3 records the qualifications for spiritual leaders in the Ephesus church. We use these verses as the standard by which a man's fitness for service is determined. 1 Timothy 3:8-10, 12-13 spells out the qualities needed in those persons who are considered for deacon service.

A deacon should be characterized by gravity and sincerity (1 Ti. 3:8a). A deacon will not treat the teachings of Christ lightheartedly or indifferently. He will possess the determination to develop Christian character to the fullest possible extent. Furthermore, the deacon should not be "doubletongued" (1 Ti. 3:8b). His speech can be trusted. He is truthful. Also, the deacon should discipline himself in regard to personal habits and personal desires (1 Ti. 3:8c). He should seek to be a good steward of the influence which has been entrusted to him.

A deacon should possess a good conscience (1 Ti. 3:9). He must be a person whose life-style reflects a sincere effort to keep the teachings of Christ.

A deacon should be a man of proven spiritual maturity (1 Ti. 3:10). His life must demonstrate the ability to pass the tests which he will inevitably face.

A deacon should have a Christian home (1 Ti. 3:12). This principle is two-pronged. The deacon is to "be the husband of one wife" and "rule his house and children well." Both as a husband and as a father, the deacon should model the biblical principles related to home life.

The deacon office is a spiritual office. Consequently, the qualifications of the potential deacon are spiritual in nature. The Scriptures do not teach that a deacon should be chosen on the basis of family ties. The Scriptures do not teach that a deacon should be chosen on the basis of net worth. The Scriptures do not teach that a deacon should be chosen on the basis of his position in the community. The Scriptures do not teach that a deacon should be chosen on the basis of the balance of power in the local congregation. The Scriptures teach that a deacon should be chosen on the basis of spiritual qualifications.

This lesson is based on the Life and Work Curriculum for Southern Baptist churches, copyright by the Sunday School Board of the Southern Baptist Convention. All rights reserved. Used by permission.

## Bible Book

### *Recipient's of God's wrath*

by Jack Kwok, Director of Cooperative Ministries with National and Southern Baptists, ABSC

Basic passage: Romans: 2:1-3:20

Focal passage: Romans: 3:9-20

Central truth: Since not one member of fallen humanity is righteous before God, all are the recipients of God's wrath.

Recipients of God's wrath completes the case for righteousness needed in the opening of Romans. The theme of Romans is the righteousness of God. This text declares all humanity to be unrighteous and subject to the wrathful judgment of God. All human actions (2:1-16) and all human affiliations (2:17-3:20) are the recipients of God's wrath.

All human actions (2:6) will be judged by God. He will judge everyone truthfully, impartially, and completely.

Whatever the action, it will be judged according to the standard of God's truth (2:2). Human standards of truth are fallible and fickle. God's standard of truth is infallible and immutable.

Not only does God's standard of truth never change in principle, it never changes for a person. Therefore, his judgment is impartial (2:11). Informed or ignorant, religious or irreligious, devout or doubter, all righteous actions are approved, and all unrighteous actions are disapproved (2:1-15). Yet, no human action can save.

These actions also are judged completely. God know the very secrets of every motive behind each action (2:16).

Like actions, all human affiliations are inadequate as a source or means for acceptable righteousness before God. The text communicates the inadequacy of racial and religious affiliation. Jewish people of this time had concluded mistakenly that they were righteous because of their racial and religious affiliation. They had replaced the personal faith of their ancestors with one of rules and regulations. Even worse, they had corrupted their faith to embrace racial superiority.

In contrast to these false views, this text stipulates that human actions and human affiliations fall to make one righteous. The focal passage clearly states that none are righteous. All have sinned, and all are the recipients of God's wrath. Righteousness needed is the first proposition as Romans presents the righteousness of God.

This lesson treatment is based on the Bible Book Study for Southern Baptist churches, copyright by the Sunday School Board of the Southern Baptist Convention. All rights reserved. Used by permission.

# CBF endorses job offer to Keith Parks

by Greg Warner  
Associated Baptist Press

ATLANTA (ABP) — The leadership of the Cooperative Baptist Fellowship "wholeheartedly" endorsed the effort to hire retiring Southern Baptist missions executive Keith Parks to lead the Fellowship's own missions program.

The Fellowship's Coordinating Council, meeting Sept. 10-12 in Atlanta, also approved two new staff positions, heard that an interim missions coordinator had been hired, and heard of plans to place a mission worker in Miami to aid in hurricane relief.

The 84-member council also voted to change the site of the Fellowship's general assembly May 13-15, 1993, from Atlanta to Birmingham, Ala., and was told no merger is planned for now between the Fellowship and the Alliance of Baptists.

Parks, who will retire as president of the Southern Baptist Foreign Mission Board Oct. 31, has not responded to the Fellowship's job offer. The council's endorsement of that offer followed a lengthy debate about the manner in which the invitation was extended to Parks, who announced in February he will take early retirement because of "philosophical differences" with FMB trustees.

Several council members expressed displeasure that Parks was offered the job of CBF global missions coordinator by the council's global missions ministry group in February without the approval of the council itself.

"I want the missions committee to operate as a part of the whole body of the Coordinating Council, and I want us to know how they operate," said council member Jeanette Holt of Washington, D.C., who made a motion for the council to develop policies for employing staff and missionaries. "I want to know the rules by which we play."

The council unanimously approved Holt's motion but not before debating at length the process used to offer Parks the missions post.

"To remove any doubt in anybody's mind," said John Cothran of Greenville, S.C., "I move that we wholeheartedly endorse the action taken regarding Keith Parks and this job."

Cothran's motion passed unanimously. During debate, Charles Wade of Arlington, Texas, said he assumed it was so "patently obvious" that Parks is the person for the job that approval by the council wasn't needed. "But it's obvious not ev-

eryone feels that way."

Jean Bond, co-chairperson of the global missions ministry group, conceded: "This is one area where we realize we did not follow what you would have had us do.... I assure you if Keith Parks declines our invitation, we will certainly come to you in the proper way...."

Bond, from Starkville, Miss., noted Parks won't respond until after he completes his work at the FMB Oct. 31.

When Parks was offered the job last February, "there was some need for haste," explained John Hewett of Asheville, N.C., past Fellowship moderator.

Earlier in the month, Parks had warned trustees that the Southern Baptist controversy had infiltrated the mission enterprise and thrown the FMB into crisis. He asked trustees to affirm his leadership or replace him.

Hewett and Cecil Sherman, coordinator of the Fellowship, participated in a meeting with the missions group in February and decided to offer the Fellowship's newly created missions post to Parks.

"On balance," Sherman said, "that group decided rather firmly that it was in the best interest of the organization that Keith Parks be offered the job and that he be offered the job that day."

Sherman said Jimmy Allen, co-chairper-

son of the missions group, called Parks and offered him the job. "At the time we hadn't broken any rules," said Sherman, noting no hiring procedures had been adopted by the Fellowship.

A month later, Parks told FMB trustees he would take early retirement because of "philosophical differences" over mission strategy. The 37-year missions veteran, who turns 65 in October, set Oct. 31 as his retirement date.

Sherman said Parks "is very seriously considering" the Fellowship's offer. "I think this organization would be greatly blessed if for three or four years he could lay the foundation" for the Fellowship's mission program, he added.

Sherman conceded Parks "has questions" about the Fellowship, such as "Does his conception of missions fit comfortably enough with ours?" But he added: "What he would bring to this organization is the thing we need most with 'soft' moderates.... We need credibility and he brings credibility."

In the meantime, the council was told, retired FMB administrator Grayson Tension has been hired as interim global missions coordinator. The Fellowship already has hired eight "missioners" — all former FMB missionaries — and plans to hire six more by Jan. 1.

## Festival of Sharing

Arkansas! Ingathering for World Hunger

Saturday, October 17, 1992

10 a.m.-2 p.m.

At the Arkansas State Capitol

Sponsored by the Arkansas Interfaith Hunger Network

This is a wonderful event for Mission Friends, GA's, and RA's as well as adults to learn more about hunger.

Festival will feature booths, displays, art, children's activities, music, puppets, and personalities. Activities of interest to all ages can be enjoyed.

**Dr. Nathan Porter to Speak  
at the 1:00 p.m. Dedication Service.**

Dr. Nathan Porter, a 24-year veteran of the Southern Baptist Home Mission Board, serves in the Department of Church and Community Ministries in the area of domestic hunger.



## Subscriber Services

The *Arkansas Baptist Newsmagazine* offers subscription plans at three rates:

**Every Resident Family Plan** gives churches a premium rate when they send the *Newsmagazine* to all their resident households. Resident families are calculated to be at least one-fourth of the church's Sunday School enrollment. Churches who send only to members who request a subscription do not qualify for this lower rate of \$6.36 per year for each subscription.

**A Group Plan** (formerly called the

Arkansas Baptist Newsmagazine, Inc.  
P.O. Box 552  
Little Rock, AR 72203

CAR-RT 50RT  
017557 COMP 2230  
HISTORICAL COMMISSION  
901 COMMERCE ST. STE 400  
NASHVILLE TN 37203  
\*\*CR39

Club Plan) allows church members to get a better than individual rate when 10 or more of them send their subscriptions together through their church. Subscribers through the group plan pay \$7.08 per year.

Individual subscriptions may be purchased by anyone at the rate of \$8.85 per year. These subscriptions are more costly because they require individual attention for address changes and renewal notices.

Changes of address by individuals may be made with the above form.

When inquiring about your subscription by mail, please include the address label. Or call us at (501) 376-4791, ext. 5156. Be prepared to give us your code line information.

## ANALYSIS

# Just what can churches, pastors say and do in an election year?

by Michael Whitehead

SBC Christian Life Commission

WASHINGTON (BP)—Are you suffering from "tax-exemption paranoia?"

The syndrome makes cultural cripples of many well-meaning pastors and church leaders who have developed an irrational fear about losing a church's tax-exempt status because of excessive "political activity."

This fear can paralyze churches and prevent them from helping members to apply their Bible-based convictions when exercising their citizenship.

In extreme cases, victims are afraid it is illegal even to talk about political issues or candidates while inside a church building. They would prefer that pastors and teachers avoid criticizing government policies or politicians rather than take any chance the Internal Revenue Service might revoke the church's tax exemption.

Historic Baptists such as John Leland were willing to be jailed or hanged before they were willing to be licensed or muzzled by Caesar, who had no authority over when, where or what they could preach. Baptist statesman George Truett went to the steps of the U.S. Capitol and demanded that Caesar keep his millstone off the church's neck.

Is it possible Baptists have allowed the principle of church-state separation to be so mangled by modern secularists it is now used to intimidate the church into silence about political/moral issues in exchange for exemption from income taxes?

Part of the reason for the paranoia is an ambiguous statute. Section 501(c)(3) of the Internal Revenue Code has two rules which regulate political activity by churches and exempt corporations.

The first rule permits some lobbying or "influencing legislation" by a church body, so long as it is "no substantial part of the activities" of the entity. The code does not define "influencing legislation" or "substantial part."

The second rule prohibits a church or tax-exempt corporation from "participat[ing] in or interven[ing] in (including the publishing and distributing of statements) any political campaign on behalf of any candidate for public office." The code does not define "participate" or "intervene."

What is the speed limit?  
"Just tell me what I can and can't do. Tell me the speed limit and I'll obey it," you say. Unlike speed limits, the tax code is not always clear.

Come to think of it, speed limits are not always clear. A driver on an interstate highway may be going 65 mph toward an unfamiliar city. Leaving the rural area and entering the suburbs, he has not seen a speed sign in a while but he knows the limit must change to 55 mph somewhere near the city. He is in a hurry, but he feels uncomfortable not knowing if 65 mph is safe or risky.

Some people handle such daily dilemmas by going 40 mph, the legal minimum on the freeway. Others will weigh the circumstances and make a judgment about what is safe or risky until they see a clear signpost. Living with ambiguous tax laws requires similar judgment.

Practicing such preventive law is prudent, but pastors and teachers will seek to balance their duties under an ambiguous law with their religious duty and constitutional right to preach prophetically to culture and government.

When balancing the risks, consider the fact that the Internal Revenue Service has never judicially revoked the tax-exempt status of a church because a pastor went too far in praising or rebuking a political candidate or in stirring up public pressure about some legislation. This is not to say churches should ignore the law just because the IRS has not enforced it. A driver should not drive as fast as he pleases just because he sees no police officer.

The fact that the IRS has judicially never enforced this section against a church, however, is relevant to reducing the fear churches have of this issue. It may show the IRS realizes the code is ambiguous, and strict enforcement would conflict with constitutional rights. Therefore, churches should feel comfortable in making judgments about such activity with more latitude than the letter of the law seems to give.

The IRS always could change its policy and start enforcing the letter of the law against churches. If that happens, churches will doubtless ask the Supreme Court to hear many of these cases in order to define the rights and duties of churches and members.

Until then, it is prudent to "drive with care" but without paranoia. Pastors don't have to be tax lawyers to make practical judgments about complying with the law while still obeying Christ's command to be "salt" and "light." Like the driver on an interstate, pastors and churches can make some informed judgments about the level of risk with which they feel comfortable.