

4-29-1948

April 29, 1948

Arkansas Baptist State Convention

Follow this and additional works at: https://scholarlycommons.obu.edu/arbn_45-49

Part of the [Christian Denominations and Sects Commons](#), [Mass Communication Commons](#),
and the [Organizational Communication Commons](#)

ARKANSAS BAPTIST

BAPTIST OFFICIAL STATE PAPER

VOLUME 47

LITTLE ROCK, ARKANSAS, APRIL 29, 1948

NUMBER 1



"Whatsoever the endowment God has given you, use it in His service."

Rural Missions Emphasized

By C. W. CALDWELL, Superintendent

The second annual Associational Missionaries' Retreat, which was held at Lake Hamilton, Hot Springs, Arkansas, was outstanding in attendance, interest, and inspiration. The conference opened Tuesday evening, April 13, with 25 missionaries present. Dr. C. E. Matthews, director of evangelism with the Home Mission Board, delivered a splendid message on evangelism. He also spoke Wednesday morning on the Associational Simultaneous Crusade. Plans are already under way in many associations of our state for such crusades in 1949.

Dr. S. F. Dows, director of co-operative missions with the Home Mission Board, spoke Wednesday evening and Thursday morning. Both of his messages gave emphasis to rural missions and the outstanding needs in the rural churches of today.

Talks were made by several missionaries, the superintendent of missions, and by Dr. B. L. Bridges, executive secretary, on various subjects pertaining to the work of missionaries.

One of the outstanding features of the conference was a visit to the Walnut Valley Church Wednesday evening. It is a rural church about ten miles from Hot Springs and is one of many churches that has received some financial aid from the Mission Department. They now have a new church building with adequate Sunday School rooms, a pastor's home, a church bus, and are carrying on a great program without any outside financial assistance. The visit was an inspiration to the missionaries as they saw what can actually be accomplished in a rural church.

RIDGECREST CONFERENCE ON EVANGELISM AND RURAL LIFE

Approximately 50 associational missionaries and pastors from Arkansas will attend the conference on Evangelism and Rural Life at Ridgecrest, June 1-8. Many of the best speakers of the Southern Baptist Convention will appear on this program. In addition to the inspirational messages, conferences will be held on methods and techniques of evangelism and rural life.

Since Arkansas Baptists will be sponsoring the Associational Evangelistic Crusades during 1949 it is necessary that the missionaries and associational directors of evangelism attend this conference. It will be money well spent for each associational board to pay the expenses of two men from their association.

SPECIAL GIFTS FOR MISSIONS

A few days ago your superintendent was telling a good layman of a great opportunity for a rural church in the northern part of the state. Later, this man said, "I want to give you \$100 to help build a church in the section of which you told me." He wrote the check out and we have it on hand, now. This is an indication that our Baptist people are getting interested in the mission work.

We do not make appeals for special offerings, but if there are those who wish to make a gift over and above their regular church contributions to some good causes, they do not have to listen to radio appeals to learn of a place to put their money. If any want to build a country church, there are plenty of places out in the country where a contribution can be used to good advantage.

Growing a . . .

Musical Generation

By RUTH NININGER

National Music Week is truly an American observance, growing out of a concerted effort in the early days of World War I to lift the morale of soldier and civilian alike. Public spirited men and women gave generously of their time and talent to establish this tradition which has proven invaluable to the good life we so often speak of as "the American way".

Each year, beginning with the first Sunday in May, Music Week is observed all over America, in city, town, and village. Schools, civic organizations, studios, choral societies, bands, and orchestras make contributions to the cause through special programs. These may take the form of community sings, concerts, or recitals. Churches, too, join in the observance by including more than the customary amount of music in the regular services. Some of them prepare an integrated choir service, using all of the graded choirs together. Others add an instrumental ensemble as prelude, offertory, or to accompany the congregational singing or the anthems.

But, far excelling any of these items in appeal to the greatest number of people is the Hymn Festival. In this observance all may participate, whether musically trained or not. The singing of familiar and beloved hymns of Christian experience gives spiritual firmness to individual faith and at the same time, increases one's happiness and sense of well-being through the medium of rhythm, melody, and harmony. Music is, indeed, the universal language through which people of all races and faiths can find a common ground of understanding and brotherly love. It is significant that so celebrated a person as Mrs. Royden J. Keith, president of the National Federation of Music Clubs, in a recent visit to Little Rock, made it clear that her administration is dedicated to the promotion of wider use of Church Music in all gatherings of musical interest. She gave it as her opinion that, when people can sing together the great spiritual truths they believe, they are better prepared to live those truths in understanding and brotherly love.

Hymn singing was one of the most satisfying experiences connected with the Baptist World Alliance Congress, held in Copenhagen, Denmark, last July. Even the casual listener could feel an electric spark of mutual trust and understanding vibrating through the vast assemblage of 5,000 Christians, as each, in his own native tongue lifted his voice joyfully and confidently in the strains of:

*"In Christ there is no East or West,
In Him no South nor North;
But one great fellowship of love,
Throughout the whole wide earth."*

Following such singing, all hearts were attuned for a broader and more sympathetic concept of world needs and for a deeper consecration to the task of meeting those needs.

Arkansas Baptists take their place in the front ranks of Christians in their observance of Music Week through Associational Hymn-Sings. At these services, held in various key cities and towns throughout the state, hundreds will assemble to sing hymns of praise, prayer, and dedication. They will even have the experience of learning a new hymn—a recommended procedure in every gathering.

AGRIPPA BEFORE PAUL

A Devotion by the Editor

"For the king knoweth these things." Instead of Paul being on trial before Agrippa, Agrippa and the whole Roman courtage were on trial before Paul and before the Lord whom Paul represented.

We have illustrated in Agrippa the danger of a superficial knowledge of Christian truth. Agrippa knew a good deal about the prophecies of the Old Testament. He knew a good deal about Jesus and His crucifixion.

Was Agrippa any better off for his knowledge of Christian truth? No, he was a great deal worse off. His partial knowledge had taken the edge off of curiosity and killed any further interest in the fact of Christianity.

Many people of our generation fancy they know Christian truth and do not bother to read the Bible. Their superficial knowledge of Christian truth is a toothless sort of knowledge that does not bite into their consciences, does not stir their emotions, nor strengthen their will. It serves rather as an opiate to numb the sensibilities, both to the sting of sin and to the stimulus of divine truth.

Some one has said, "There is nothing more impotent than firmly believed and unexamined truth." We have within the pages of our understanding the great truths of the Bible with which to build our characters and by which we may be guided in our course of life. Yet, there are countless numbers who discard these Bible truths for the carnal lights of a sinful world.

We have illustrated in Agrippa the danger that one may go out into the darkness of sin and death from the very presence of the shining light of eternal truth.

Agrippa, Bernice, and Festus listened to Paul. But what came of it? Only this: "When they were gone aside they talked among themselves saying, This man is doing nothing worthy of death or of bonds," and they refused the truths which Paul preached, had neither the moral courage to release him, nor the honesty of soul to allow that truth to cleanse their hearts.

"For the king knoweth of these things before whom also I speak freely: for I am persuaded that none of these things are hidden from him; for this thing was not done in a corner."

"King Agrippa, believeth thou the prophets? I know that thou believest" (Acts 26: 26-27).

ARKANSAS BAPTIST

208 BAPTIST BUILDING, LITTLE ROCK
Official Publication of the Arkansas Baptist
State Convention

B. H. DUNCAN, Editor
MRS. LESLIE W. BUCHANAN, Business Manager

Publication Committee: W. H. Hicks, Little Rock; Chairman; O. C. Harvey, Arkadelphia; Wylie J. Paris, Boyd Eldridge, Tyronza; R. M. Abell, J. Leroy Tedford, Corning.

Entered Post Office, Little Rock, Arkansas, as second class mail matter. Acceptance for mailing at special rate of postage provided in Section 1103, Act of October 3, 1917.

Individual subscription \$2.00 per year. Church gets 11 cents per month or \$1.32 per year per family; Family Groups (10 or more paid annual advance) \$1.50 per year. Subscription to foreign address \$2.50 per year. Advertising Rates on Request.

The cost of cuts cannot be borne by the advertiser except those it has made for its individual advertisements. Resolutions and obituaries published at five per word. One dollar minimum.

Articles carrying the author's by-line do not necessarily reflect the editorial policy of the paper.

Across the Editor's Desk

Do You Truly Believe . . .

Prayer Changes Things

An intriguing, haunting question comes to mind as we think of the ten days between the ascension of Jesus and the coming of the Holy Spirit on the day of Pentecost. Perhaps it is a speculative question, however, it should provoke us to serious and soul-searching thought. Would the Holy Spirit have come upon the disciples on the day of Pentecost if they had not been in continuous prayer for the previous ten days? If they had not been praying for ten days, would the disciples have been prepared for the coming of the Spirit?

May we not address this question to ourselves: Will the Holy Spirit come upon Southern Baptists meeting in Memphis in May, if they do not spend the intervening time in prayer? Will Southern Baptists be prepared for the coming of the Holy Spirit upon them, to inspire them and empower them, if they do not spend the time in prayer?

Only tongues that have been exercised in prayer are set aflame by the Spirit with the burning message of God. A prayerless tongue can never tell the story of God's redeeming grace. A prayerless heart can never be filled with a passion for lost souls. A prayerless life can never radiate the love and winsome grace of our Lord. Prayerless Christians will be powerless in a world that is so reckless with physical power.

Power of God Needed

The world is trying every expedient except prayer. Confusion and despair possess the spirits of men and nations. No one seems to know the way out of the present world-wide dangers. A third world war has been preached ever since the close of the last one. It remains for God's people to finally do what they should have done in the first place—resort to prayer.

Dare we believe that it is possible for God to release through Southern Baptists a spiritual power that will permeate the life of our nation, a power which shall become the determining factor in the prevention of a third world war? Do we feel the challenge to pray to that end? Are we willing to meet the challenge and commit ourselves to prayer?

We challenge Southern Baptists to make the Memphis Convention a Prayer Convention. Let every feature of the Convention program be subordinate to the passion of prayer; let every session of the Convention be dominated by the passion of prayer; and let every messenger to the Convention be possessed with the passion of prayer.

However, we must not wait until we reach Memphis to begin praying. The disciples prayed for ten days before Pentecost. Between now and the meeting of the Convention every church should be called to prayer, and every organization within every church should

be called to prayer, and every pastor should emphasize the need to pray that God will release His power through Southern Baptists at Memphis as has never before been experienced by us. And, that the power so released may reach to other Christian bodies and become a nation-wide revival of spiritual power.

It appears that only God can avert the impending dangers which threaten the life of the world. Shall we not prostrate ourselves before God and lay our world before Him and ask that He will give His power in unmeasured portion to prevent the recurrence of another world conflict.

Prayer Versus Bombs

Let us pray in our homes, in our churches, on the trains en route to Memphis, in the hotel rooms, in the convention rooms before and following the sessions. Let us pray that God will give us another chance to evangelize the world instead of destroying the world with atom bombs! It is not too late to fulfill our mission of world-wide evangelism, if we begin now; begin with prayer and follow with the gospel message to all the world.

When the disciples had continued in prayer for ten days, the Holy Spirit came upon them and then they bore their witness with telling force. If we pray in such manner that God will pour out His Spirit upon us, we, too, shall extend our witness and people around the world will hear the good news.

" . . . Ye Have Done It Unto Me"

Mother's Day is Hospital Day. The State Convention authorized the Baptist State Hospital to appeal to the churches for an offering on Mother's Day for charity patients at the hospital.

Heretofore all the charity service rendered by the hospital has been paid for out of the earnings of the hospital. That is, the pay patients have paid for all the non-pay patients served by the hospital. Arkansas Baptists have had no share in this ministry to those who are unable to pay their hospital bills.

The offering on Mother's Day provides an opportunity for every Baptist in the state to help provide some person with needed hospitalization who otherwise would be compelled to go without such service.

The money received through this Mother's Day offering will be kept exclusively for those persons who are not able to pay.

Let us make our offering worthy, realizing that "It is more blessed to give than to receive."

Let us not be like the little boy whose father gave him a penny and a quarter on Sunday morning and sent him to Sunday School with

the instruction that he give one or the other piece of money to the Sunday School collection.

Upon the child's return, the father was interested to know which piece of money he gave. In response to the father's question the boy answered: "Father, you know the Bible says, 'The Lord loveth a cheerful giver. And you know I could give the penny more cheerfully than the quarter.'"

We used to hear the slogan, "Give till it hurts." That is wrong, because it often hurts too quick. Instead, we should give till it quits hurting and becomes a pleasure.

Make your Mother's Day offering to the hospital for charity a joyous, cheerful, and generous gift to the less fortunate.

Dictatorship In America?

John L. Lewis has lost much public favor for the miners of America. The public generally is in sympathy with the miners and their demands for a living wage and better working conditions. It is our conviction that the American people are willing to provide the miners with living conditions, wages, and welfare benefits comparable to other groups of American workers.

Mr. Lewis has established a dictatorship not only over the miners, but also over American industry which depends upon coal for its operation. Consequently, the American public, which is in sympathy with the miners, is sacrificed upon the altar of John L. Lewis dictatorial powers. The miners themselves suffer with the rest of the American public.

Mr. Lewis has, over a long period of time defied the government of the United States. He and Mr. Petrillo have been as dictatorial in their respective fields of operation as Stalin of Russia. In fact, Mr. Lewis has used the veto power with the same arrogance and obstructionist tactics shown by Russia.

Mr. Lewis has demanded that welfare fund benefits be given to persons who are not employees of those who signed the contract.

Mr. Lewis has refused to join the operator trustee in order to secure a third and neutral trustee to administer the fund.

Mr. Lewis rejected the findings of a firm of actuaries which was employed to submit a report.

Mr. Lewis ignored an actuarial report submitted by the Social Security Board of the U. S. government, which generally substantiated that made by a private firm.

Mr. Lewis rejected a suggestion from government official that a three-man board of disinterested private citizens be empowered to look into the whole controversy.

We believe that the American public is endowed with a sense of fair play in sufficient degree to award any group of American citizens their just rights without the blood and thunder methods of dictators. We believe that the greatest results can be achieved by civilized methods and on the basis of cooperation.

If we maintain our American Democracy dictators in labor, business, and government must be curbed; free enterprise must be safeguarded, and the general public must be protected lest it become the victim of minority groups.

NOTES OF ADVANCE

The Mount Vernon Church of the Central Association, O. R. Richey, pastor, is experiencing a revival of spiritual life, and renewed interest in church and denominational activities.

About a year ago two deacons from the First Church, Benton, became interested in the Mount Vernon Church and assisted in the organization of a Sunday School, which has made steady progress and is still growing.

O. R. Richey was called to the pastorate of the Mount Vernon Church, and has led the church in an expanding program.

In a recent revival meeting there were 8 additions to the church by baptism.

The executive board of the Buckner Association has voted to encourage all churches of the association to hold at least two revival meetings during the year. Associational missionary Herman Highfill is leading in this movement.

During 1947 there were 150 baptisms in the churches of the association. The goal for this year is to exceed that number.

The Waldron Church has already experienced a fruitful revival, also the Parks Church has held a revival meeting and baptized 9 persons, with others awaiting baptism.

Pastor Lloyd A. Sparkman, South Side Church, Pine Bluff, preached in revival services recently at the Lakewood Heights Baptist Church, Atlanta, Georgia, in which more than 50 persons united with the church, a majority of these by baptism.

Jack Bridges is pastor of the Lakewood Heights Church.

First Church, Tichnor, added 12 new members in a recent revival meeting in which Gerald Ogden, Des Moines, Iowa, did the preaching.

The Tichnor church went to full time service last November. Frank Jeffrey is pastor.

Rural Evangelist M. E. Wiles reports that during his first year in his present position he has done as follows: Served in 20 associations; visited 67 churches, and 11 mission points; preached 320 sermons; witnessed 281 professions of faith, and 275 additions to churches; collected \$1,860 for state missions; and helped ordain 14 deacons, and one preacher.

Recently, Evangelist Wiles preached in revival services at the Curtis Church, Desmond Castleberry, pastor. Thirty-five people professed their faith in Christ during this meeting, most of them uniting with the church by baptism.

Immediately following the revival at Curtis, Evangelist Wiles was engaged in a meeting at the Popular Ridge Mission, Mt. Zion Association, which is sponsored by the Lake City Church. The meeting resulted in 10 additions to the Lake City Church by baptism.

The Lake City Church, W. E. Speed, pastor, is sponsoring four missions, and plans to establish two more in the near future.

A. F. Muncy did the preaching in recent revival services at Flippin Church. There were 27 additions to the church membership. D. M. Kreis is pastor.

Thomas B. Chaney, who has served as director of activities at Immanuel Church, Fort Smith, since December, 1946, left April 1, to become assistant to the pastor of Walnut Street Church, Louisville, Kentucky.

The Walnut Street Church is the largest Baptist church in Kentucky, with a membership of more than 4,300, and a Sunday School enrolment of 2,727, with an attendance of more than 1,500. The church has 18 staff members. Mr. Chaney's duties will be to work with the pastor in planning and supervising the church program. Dr. W. R. Pettigrew, a native of North Carolina, is the pastor.

Dr. Finley Gibson, former pastor of First Church, Fort Smith, was pastor of Walnut Street Church for 22 years, and is now pastor emeritus. It was under Dr. Gibson's leadership that the mission was organized, which later became Lexington Avenue Church, and is now Immanuel Church, Fort Smith.

First Baptist Church, Springdale, C. E. Wilbanks, pastor, closed a revival meeting April 4, in which Dr. B. A. Pugh, pastor of the First Baptist Church, Joplin, Missouri, did the preaching, and Lucian E. Coleman, director of education in the Springdale church, directed the music. There were 15 additions to the church by baptism, and 8 by letter.

The Springdale church is planning for three Vacation Bible Schools in May, and a Sunday School Enlargement Campaign June 13-18, in which they will have the assistance of Dr. Edgar Williamson, director of the Department of Religious Education, also, a faculty of state approved workers.

The Union Baptist Church El Dorado, wishes to welcome all former pastors and friends to be present on May 9 for Homecoming Day, at which time their new educational building will be dedicated. Dr. C. W. Caldwell will preach the dedicatory sermon.

Pastoral Changes

Felix Quinton has gone to the Rock Creek Church, near Mansfield, for half time. He is also pastor of the Fellowship Church, Wicher-ville.

J. Pat Shields, Clarksville, has accepted the call to the Bigelow and Casa churches of Perry County Association.

A. D. Corder of Arkadelphia is the new pastor of the Harmony Church, Perry County Association, for half time.

Irvin Crossland has resigned as pastor of the Ratcliff Church and gone to the Webb City Church.

E. C. Egbert from Muldrow, Oklahoma, to Ratcliff Church as pastor.

New Church Organize

Sunday afternoon, April 4, representatives from Cabot, Pleasant Hill, Des Arc, A Station, Old Austin, and Camp Ground Baptist Churches met at Mt. Carmel Presbyterian church, three miles south of Cabot, organized a council for the purpose of organizing Mt. Carmel Baptist Church.

There was 14 persons present, with 1 in hand, to organize a new Baptist church. These voted to resolve themselves into a dependent Baptist church. Missionary Coleman was elected moderator and Raymond Williams clerk pro tem.

After examining the credentials of who proposed to organize the new church the council recommended that the church be constituted. The Articles of Faith adopted by Southern Baptist Convention 1924, were read and accepted by the church. The church covenant was also adopted.

The name, Mt. Carmel Baptist Church presented and readily accepted as the name of the new church. The following church officials were elected: Clerk, Earl Heffner; treasurer, A. E. Lemay; Sunday School superintendent, Raymond Williams; Trustee, Union director, Earl Heffner; W. M. U. president, Mrs. Mae Cullum; deacons: Raymond Williams, A. E. Lemay, Earl Heffner, Taylor; trustees, Earl Heffner, Will T. Raymond Williams; Sunday School officer, Secretary, Mrs. Raymond Williams; Intermediate teacher, Mrs. Odel Heffner; Junior teacher, Mrs. M. M. Ledbetter; Primary teacher, Mrs. Lottie Burgess; Beginner teacher, Mrs. Mae Cullum.

Upon invitation three others joined the church. One woman, who had previously promised of letters from other churches, promise mother re-dedicated her life to the Lord.

Before this meeting, the Presbyterian church building and one acre of land had been purchased, also, a piano had been secured. The building was wired for electricity, song books, Sunday School literature, and record player all purchased and paid for.

Brief addresses were delivered by pastor W. E. Roberts, Old Austin; Ernest Baker, Des Arc; and S. M. King, Pleasant Hill. Missionary, H. S. Coleman, spoke on, "The Kingdom of God is within you." "The Kingdom of God I would like to belong to."

There were 47 in the first Sunday School and 53 for the morning worship service. The subject which time the missionary preached on was, "The Church."

Ellen Gilliland, pastor of Salem Church, Nunley, Arkansas, was ordained to the ministry in the First Church, Arkadelphia, 14. The pastor, J. G. Cothran, preached the ordination sermon on "The Minister and His Ministry." A number of pastors participated in the service.

T. R. Hammons, Forrest City, gives a wonderful report regarding a mission he has been working with for several weeks. This mission is located between Forrest City and Memphis; there is no Baptist church within ten miles. The attendance has increased four times, and the offerings four times.

The congregation of the South Side Church, Pine Bluff, recently voted to build a new church to the church costing approximately \$20,000. The cost would be considerably more if this were it not for the fact that the members are donating their services.

Preparation For Heaven

(The third in a series of articles on Heaven and Hell.)

+ + +

By the Editor

+ + +

Since heaven is a place of holy environment and "incorruptible" inheritance, it follows that the inner nature of those who inhabit heaven must be compatible with that holy environment and worthy to appropriate that "incorruptible" inheritance. The inner nature of the butterfly corresponds to the environment of sunlight and flowers, it could not live in the underground tunnels of the mole. But the inner nature of the mole is adapted to those underground tunnels and it could not live in the environment of sunlight and flowers.

No study of heaven would be complete without a study of the inhabitants of heaven, and the preparation necessary to fit them for that eternal habitation. Without this preparation, a person would be no more able to enjoy the glories, beauties, and ecstasies of heaven than those who love hill-billy music are able to enjoy the great anthems of Beethoven, Mendelssohn, and Bach.

How is it that some people seem to think that they could enjoy the refinements and glories of heaven if they were taken there without being given a new nature which would find the environment of heaven congenial?

Partakers of Divine Nature

Those who go to heaven must be partakers of the divine nature. Jesus taught His disciples to pray, "Our Father, who art in heaven." We are children of God by faith in Jesus Christ: "And if children, then heirs; heirs of God, and joint-heirs with Christ." It is neither idle chatter nor weak sentiment when we address one another as brothers and sisters in Christ; it is a recognition of the basic fact of our Christian experience.

Jesus had a conversation with a man one night. This man was no violent sinner, on the contrary, he was a good man, a man of culture, a religious man, a leader and instructor. And yet Jesus said to this man, "Except a man be born again, he cannot see the kingdom of God . . . Marvel not that I said unto thee, Ye must be born again." The only possibility of sonship is by generation and birth; the only possibility of sonship to God is by regeneration and the new birth. It is just as impossible for the cultured Nicodemus with all his goodness to go to heaven without the new birth as for the vilest sinner of the community. Both must be born again.

Jesus once charged that His critics were children of the Devil and doing the Devil's work. He was not talking to murderers, thieves, and vile sinners, but to the morally upright and self-righteous. They were not children of God and could not be, until they were born again.

Gracious Attributes of God

That new nature partakes of the gracious attributes of God. Christian love is a dominant attribute of the Christian heart; and love is of the essence of God's nature. "Let us love one another: for love is of God; and every one that loveth is born of God and knoweth God."

Forgiveness is another gracious attribute that is born of the divine nature. The disciples were puzzled over this surging spirit of for-

givenness which they felt in their hearts. They were conscious of a forgiving spirit that put no limit on forgiveness, and yet they were surrounded by worldly standards that were clearly opposed to that spirit. How reconcile the two? Shall we forgive seven times, more than the usual number? That would go far beyond human standards. And Jesus virtually said, let there be no limit to your forgiveness.

That spirit which seeks the good of others is also of the divine nature. The apostle said, "Let us do good unto all men, especially unto them that are of the household of faith." But Jesus went further than that saying, "Do good to them that persecute you and despitefully use you . . . Bless and curse not . . . Overcome evil with good."

The love of holiness and purity is another characteristic of that divine nature of which we are partakers. All who go to heaven will love only the pure, clean, and holy. One could not be happy in heaven unless he did love these things.

Being born of God, being made partakers of the divine nature, that realm of love, of forgiveness, of unselfishness toward others, and of purity and holiness becomes our natural element, just as water is the natural element of the fish and the atmosphere is the natural element of the bird.

The Apostle Peter, who declares that we must be partakers of the divine nature, sets down for us the addition table of that divine nature: "Add to your faith virtue; and to virtue knowledge; and to knowledge temperance; and to temperance patience; and to patience godliness; and to godliness brotherly kindness; and to brotherly kindness charity. For if these things be in you, and abound, they make you that ye shall neither be barren nor unfruitful in the knowledge of our Lord Jesus Christ . . . For if ye do these things, ye shall never fall: for so an entrance shall be ministered unto you abundantly into the everlasting kingdom of our Lord and Saviour Jesus Christ."

Divine Agent

Those who go to heaven must have their souls cleansed by the divine agent. This process of purification and cleansing is necessary to prepare one for that happy place. Human nature is all cluttered up and soiled and befouled by sins, sinful tendencies, unholy desires and longings, impure motives and emotions. A person couldn't take all this foulness into heaven, he must get cleaned up.

This work of cleaning up one's life cannot be done by oneself alone. Jesus gave a picture of a man who undertook to do it himself. He drove out the evil spirit from his life and reformed his conduct and tried to cleanse his own heart. But the evil spirit that was driven out came back and discovering that the life of the man was empty, though swept and garnished, he re-entered the man's life and brought with him other spirits more

wicked than himself, and the last state that man was worse than the first. If the man had let Jesus come in when he drove the evil spirit out, a different story would be told.

Jesus is the only one who can cleanse the heart and life for heaven. It is the "blood of Jesus His Son" that "cleanseth us from all unrighteousness." For, "If we confess our sins, he is faithful and just to forgive us our sins, and cleanse us from all unrighteousness."

Sacrifice on Calvary

The sacrifice on calvary paid the penalty for our sins. If we go to heaven it will be because we have accepted, by faith, the sacrifice which was made for us. And by the appropriation of the sacrifice of Jesus, building the spirit of that sacrifice into our characters, by saturating our conscious beings with thoughts of Him who died for us, we grow in His likeness and purify our beings of all the stains of sin.

We cannot think on calvary's cross and entertain evil thoughts; we cannot keep the crucified Christ forever in our mind's eye and disobey our God; we cannot contemplate the purity of His life and live unclean ourselves; we cannot remember His love and harbour malice and hate in our hearts; we cannot dwell upon His forgiving grace and be revengeful and unforgiving; we cannot observe His unselfish service and be selfish and greedy ourselves.

Sanctification A Growth in Christian Graces

Those who go to heaven must be impelled by the divine urge of sanctification. Jesus said, "I sanctify myself that they also may be sanctified." This sanctification is an unreserved dedication to God and His kingdom causes. You couldn't think of a person in heaven holding back from a thorough and genuine dedication of himself to all that God requires. That sanctification or dedication begins here. It becomes the evidence of the new nature and the spiritual cleansing which one has experienced.

The apostle speaks of babes in Christ. He dwells upon the tragedy of the arrested growth of those who should be far advanced in their spiritual development. The new birth may be our passport into heaven, but the degree of our sanctification will determine our rewards in heaven. One may legitimately feel unworthy to even enter the gates of heaven but it is no credit to him to be satisfied with a bare entrance when he is offered an abundant entrance into that blessed place.

The process of sanctification is the releasing of one's responses to the environment of heaven. There is a perfect affinity between the environment of heaven and the response of a redeemed life. The flower drinks in the sunshine and the rain and opens its various colored petals of artistic beauty in response to sunshine and rain and soil and flowers are all natural to one another. A reborn, purified and dedicated heart and the environment of heaven are all natural to one another.

So, the inhabitants of heaven will be prepared for that eternal home by being made partakers of the divine nature through the new birth, by being cleansed by the blood of Jesus, by being sanctified by the divine spirit. No one else will be there.



*If YOU were
in their SHOES*



Your Mother's Day Contribution Helps Everyone

If you were in the shoes of hundreds of the sick and suffering in Arkansas who are unable to pay for needed hospital care, where would you turn?

The doors of our Baptist Hospital in Little Rock are always open to patients and we want none to be turned away. With the ever increasing cost of care to our pay patients, it is becoming more impossible to expect them to shoulder the load of additional cost made necessary in the institution's care of the needy.

The Mother's Day Love Offering Fund will assure us that care of the medically indigent can proceed as Arkansas Baptists desire.

Jesus said: "Therefore all things whatsoever ye would that men should do to you, do ye even so to them..." Let us remember this Golden Rule which our mothers taught us. For inasmuch as we minister to others through the Mother's Day Love Offering Fund, we serve in His name.

BAPTIST STATE HOSPITAL

Nehemiah Rebuilds Jerusalem

By MRS. ROLAND LEATH

Thus far in our study of the Jewish people we have considered the prophetic missions of Haggai, who urged the people to rebuild the Temple, and of Zechariah, who led them upward into a more righteous walk. The book of Nehemiah introduces our principal character and records events of a much different nature than those of the prophets' ministries: namely, the restoration of the walls of the city of Jerusalem and of civil authority within the city.

Nehemiah is one whom we can profitably study and even follow in our own lives. Little is recorded in the Bible concerning this man's family or background. Much is recorded, however, as to his character and love of God from the work he did and the faith he displayed. He is the son of Hachaliah; he is thought to have been, as Zerubbabel, of the royal household of David. Certainly, as we study of him, we learn that he was a great patriot, a man of prayer, earnest, unselfish, humble, purposeful, courageous, definite, and faithful. Christians of today need such a leader.

Nehemiah Put God First

We find Nehemiah, a Jewish captive, serving his master, Artaxerxes, in Shushan, which was the winter palace of the Persian monarchs. He held a most confidential position, that of cupbearer to the king. As in the case of Joseph and Daniel, he was a Jew who stood high in a foreign court, trusted by his master.

To the city of Shushan came Hanani, "one of my brethren" as Nehemiah states; this could mean that he was a relative or possibly one of his own people. Hanani reports that the walls and gates of Jerusalem are still in the ruined condition which the siege of Nebuchadnezzar had caused. This, of course, was against the peace and safety of the returned captives.

Nehemiah was grieved because of the condition of the people and the city of his fathers. In this magnificent palace, surrounded by luxury and ease, Nehemiah thought of how he might serve God and his people. He was willing to forsake all he had, endure hardships and trials, to be used of God. He prayed, after fasting and weeping, that God would forgive his sins and the sins of the people, and use him in Jerusalem.

As Nehemiah went about his work, he prayed to God and thought of the distant homeland. Soon the burden of his heart showed in his face. The king, seeing this some four months after Hanani's visit, questioned Nehemiah, and learning the cause of his sadness, opened the way for Nehemiah's great work. He granted him leave, gave him letters to governors which permitted him passage through intervening lands, and materials to be used in rebuilding the walls of Jerusalem.

"Prayer changes things" for those who sincerely serve, love, and honor God.

God Helps His Servant

Nehemiah, with a definite purpose in mind, filled with an unselfish zeal for his people and love for his God, set about to carefully plan the work before him. He arrived in Jerusalem, spent three days making friends and adjusting himself; then he rose up at night and with a chosen few, went to view

Sunday School Lesson

For May 2, 1948

Nehemiah 4: 1-6, 13, 14, 21-23; 6:15,16

the broken walls and gates of the city. Still, he had confided in no man what God had put upon his heart to do (2:12).

With plans all completed, and the need definitely in mind, Nehemiah told the people how God had led him to do this particular thing, and he encouraged the people to join with him. "Let us rise up and build" was their response. Immediately, enemies were aroused, especially Sanballat, the Horonite, and Tobiah, the Ammonite. These had been angered when Nehemiah arrived in Jerusalem for they realized he came with the welfare of the people at heart.

Perhaps the most evil opposition known to a Christian is that subtle weapon, ridicule. These enemies laughed at the "feeble Jews" and sneered at the idea of a handful raising the wall on the ruins of the old (4:3). Nehemiah prayed and God was sufficient for the need of his servant.

God Gives Plans to His Leader

"So built we the wall; and all the wall was joined together unto half the height thereof: for the people had a mind to work" (Neh. 4:6). With confidence in God, Nehemiah encouraged his workers who, despite ridicule, labored until the entire wall was up one half the intended height. Then, the enemies conspired to actually come to force with the Jews. Again, Nehemiah went to his Lord who gave him a plan and he "set watch against them day and night."

The laborers on the wall worked with their fighting equipment by their sides; while one group worked, another stood by, alerted in case the enemy should attack. Nehemiah had a great watch-word, "Remember the Lord, who is great and terrible!"

A trumpeter by his side, Nehemiah led his people to work and watch. Many of them did not sleep or rest; the result—the enemy could not go against these men armed with swords, spears, and the strength of God. God will always give wisdom, strength, and guidance to His own.

God Gives Success

"So the wall was finished in the twenty and fifth day of the month Elul, in fifty and two days." Many things account for the rapidity with which the task was done. Nehemiah served his Lord well, he earnestly prayed, he was just with the people, he carefully planned the work, and he effectively placed the workers.

The enemies suffered a set-back; the nations round about feared these people; for "they perceived that this work was wrought of our God." May our daily prayer be that we will allow the power of God to be seen in our lives, our work, and our churches.

WHEN VISITING IN DALLAS

Visit With Ross Avenue Baptist Church
Ross and Moser

Homer B. Reynolds, Pastor

College Students to Serve as Missionaries

The Home Mission Board is now in the process of assigning approximately 300 college students to serve on the various mission fields of the South for ten weeks this summer, May 31 to August 6.

As has been the policy for several years these students will work under the regular missionaries of our Board and workers designated by the state secretaries with whom we are co-operating in mission activities.

Only missionary volunteers, with at least 60 hours of college credit, will be considered for appointment. They will participate in practically every type of service undertaken by the Home Mission Board. Among the fields in which they will serve are the following: Mexican, Indian, Italian, French, Chinese, Negro, good will centers, city mission, rural missions, evangelism, under-privileged pioneer fields, and mountain areas.

Last year the 286 student workers established 41 new missions, constituted 23 new churches, taught a total of 76,048 children, Vacation Bible schools, helped lead 3,800 persons to Christ, and reported 3,506 re-dedications.

There is a four-fold purpose in this program: first, it helps young people who find called to missionary service to discover their interests and aptitudes by actual participation in such work; second, much good is accomplished on our mission fields; third, the students, returning to their campuses, help to arouse general interest in missions; and fourth, it is an investment in the training of future missionaries, and helps the Home Mission Board discover the best material for our permanent missionary forces.

Western Conference A Success

Much credit is due Fred A. McCauley for the success of the Southern Baptist Home Mission conference at Asilomar, California, March 25-31. One hundred ninety-two were registered at this, the second conference of the three Western states of California, Arizona, and New Mexico.

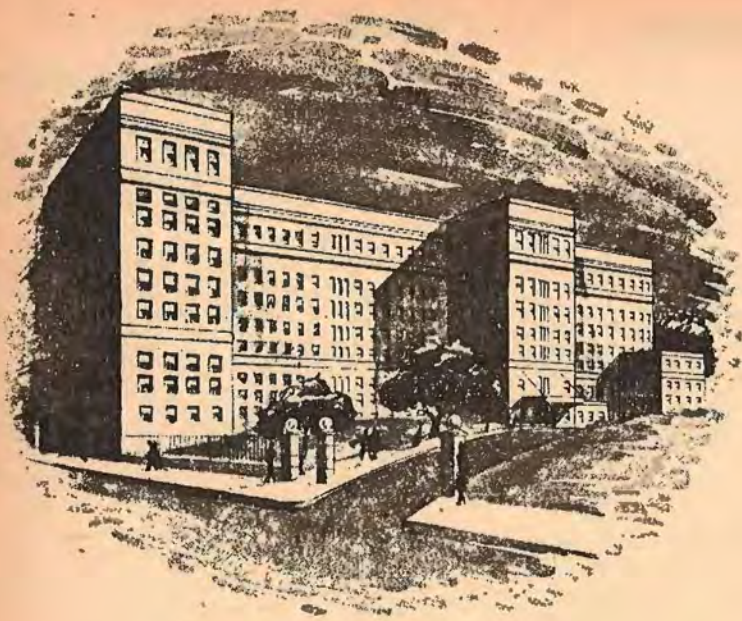
Among those attending the conference were Home Mission Board missionaries and workers, secretaries of the three states, pastors, and W. M. U. representatives.

The meeting has been described as one of the most unifying, encouraging, and instructive ever held in that section. Outstanding features included: testimonies of the missionaries; challenges presented by the secretaries of each state; historical and inspirational address by Dr. L. A. Brown on "The Gospel Westward Movement Carried by Baptists"; and strong, inspiring messages of Dr. S. Dowds. Dr. B. O. Herring, president of the Golden Gate Seminary, conducted a Bible hour each day which was classified by many as superb.

The conference is scheduled to meet in New Mexico next year.

Cuban Baptists Receive Gift For Assembly

Cuban Baptists are happy because of a gift of sixty acres of land presented to them by a wealthy woman who is a member of a Cuban Baptist church. The lovely wooded section adjoining a beautiful river will be used by Cubans for an assembly similar to Ridgecrest.



**More fields of opportunity
are open to nurses than
any other career**

You may serve in a hospital, enter Public Health service in school or clinic, work for the Government in the U. S. or in reconstruction work overseas. Many nurses specialize in work with children; develop a private practice, or become nursing administrators and teachers.

Nursing is a highly satisfying and well-paid profession

A nursing career will bring you that completely satisfying feeling that comes from helping others. As a nurse you will be of service to your community, your country, your fellowman. You may choose from a wide variety of well-paid fields. Graduates of Baptist Memorial Hospital School of Nursing are serving in every field open to nurses.

**BAPTIST
MEMORIAL
HOSPITAL**
Memphis, Tennessee

**Have you considered
the advantages of a
Nursing Career?**

**Training is made pleasant
for you at Baptist Memorial**

A cheerful, comfortable room is provided for you at the Nurses' Home. Reception and Recreation rooms, and a swimming pool help make a pleasant home life. There is a well rounded religious program. Frequent parties, teas and dinners are given. Students receive annual physical examinations, and illnesses are cared for free of charge by school physicians.

**CAN YOU QUALIFY FOR A NURSING CAREER?
Check These Requirements . . .**

You should be a high school graduate between the ages of 17 and 32, single, and in excellent health. You must pass a thorough physical examination, an aptitude test, and have a personal interview with the Director. You are required to have a recommendation from your pastor.

Next Class Begins June 5

**Learn the facts about
Nursing!**



Send in this coupon

SCHOOL OF NURSING

Baptist Memorial Hospital, Memphis

Please send me the beautifully illustrated catalogue of the School of Nursing.

Name.....

Address.....

City..... State.....

Share Your Eggs With Our Boys and Girls!

In Our Second Annual

EGG OFFERING!

**BASKETS FULL - CARTONS FULL -
CRATES FULL - WE CAN USE ALL
THE EGGS YOU CAN SPARE!**

This is one time of the year when you CAN put all your eggs into one basket—or one crate—for the best purpose we know of, the boys and girls at Bottoms Baptist Orphanage! Through your generosity we are counting on enough eggs to last our children all through next winter, thus effecting a tremendous saving in our annual food budget—and at the same time, supplying the children with the necessary nutritional value of eggs.

*Eggs are an important part of
the food supply at the
Orphanage!*

The body-building minerals found in eggs are of particular importance to the boys and girls at our Orphanage. We can use eggs in large quantities—and we hope your generosity will match! So share every egg you can spare—and ask your neighbors to help.



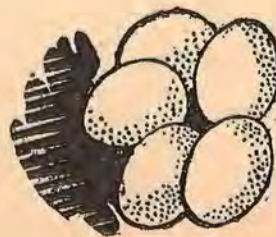
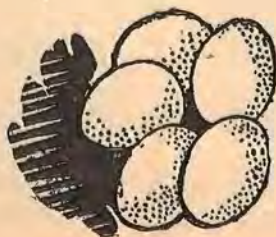
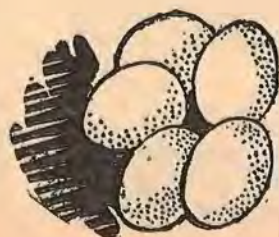
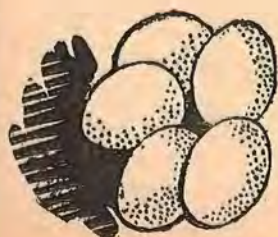
★ WE HAVE AMPLE STORAGE SPACE

One of the reasons we are asking for large quantities of eggs now—before hot weather—is because we have plenty of cold storage space to take care of all you can send us—every egg will be used, none will go to waste! Emergency cases will be sent at once to any individual or to any church . . . just write a card or letter requesting the cases you or your community can use!

PLEASE SHIP EGGS VIA RAILWAY EXPRESS, MOTOR EXPRESS or PARCEL POST TO

Bottoms Baptist Orphanage

MONTICELLO, ARKANSAS



Religious Education

EDGAR WILLIAMSON, DIRECTOR
 R. O. BARKER, Sunday School Superintendent
 T. D. McCULLOCH, Student Union Secretary
 MRS. B. W. NININGER, Church Music Director
 RALPH W. DAVIS, Training Union Director
 Baptist Building, Little Rock



Figures To Inspire

April 18, 1948

	S. S.	T. U.
Little Rock, Immanuel	1142	367
Including Missions	1604	679
Fort Smith, First	1079	403
Little Rock, First	922	381
El Dorado, First	896	263
Pine Bluff, First	765	184
Hot Springs, Second	690	243
West Memphis, First	685	268
No. Little Rock, Baring' Cross	657	284
Hope, First	637	95
Fayetteville, First	625	233
Including Mission	685	273
Paragould, First	616	243
Camden, First	605	144
Including Mission	690	194
Magnolia, Central	560	201
Including Mission	598	
Arkadelphia, First	548	225
El Dorado, Second	527	128
McGehee, First	510	153
Including Mission	587	
Little Rock, Gaines Street	505	334
Hot Springs, Central	501	170
Including Mission	570	
L. Rock, Tabernacle	494	138
Paris, First	491	177
Ft. Smith, Immanuel	484	84
Bauxite, First	470	162
Cullendale	443	218
Little Rock, Pulasaki Hgts.	429	
Fordyce, First	419	119
Siloam Springs, First	415	201
Conway, First	406	56
Hot Springs, First	401	85
Springdale, First	379	203
Including Missions	502	
Rogers, First	367	88
Russellville, First	366	96
Fort Smith	362	78
Hot Springs, Park Place	360	123
Ft. Smith, Grand Ave.	360	85
Little Rock, South Highland	320	67
Harrison, First	314	158
Including Mission	439	203
Gentry	306	131
Snackover, First	297	118
Pine Bluff, Second	295	77
Nashville, First	287	106
Stamps, First	250	91
Greenwood	243	105
El Dorado, Westside	243	85
Ft. Smith, Oak Grove	240	95
West Batesville	240	91
Little Rock, Calvary	231	103
No. Little Rock, Central	228	104
Texasana, Calvary	224	101
Mena, First	219	74
Including Mission	277	107
Ft. Smith, Bailey Hill	198	102
Prescott, First	180	80
Elaine, First	171	111
South Fort Smith	159	81
Levy, First	150	31
Including Mission	249	100
No. Little Rock, Pike Ave.	147	76
Warren, Immanuel	146	91
No. Little Rock, Sylvan Hills	146	76
Douglasville, First	144	68
Pine Bluff, Matthews Memorial	140	97
No. Little Rock, Grace	136	36
Almyra, First	134	87
El Dorado, Joyce City	132	103
Eureka Springs, First	117	25
Little Rock, Woodlawn	116	71
Little Rock, Plainview	111	104
Texasana, Trinity	77	61
Douglasville, Second	74	47
Little Rock, Westside	73	31
South Texasana	63	61
Little Rock, Bidde	59	46
Wheatley	39	
Little Rock, Bellview	36	

To Teach at Assembly

Presenting another one of the personality profiles of people who will be on the music faculty at the Christian Training Assembly the week of July 15-22, the director takes pleasure in introducing Miss Odessa Holt, Mount Ida. Miss Holt is well known to all who have attended the Assembly in former years because she has served so faithfully as assistant to Mrs. Nininger in the music program. This year she will teach a class in **MUSIC FUNDAMENTALS** as part of the enlarged curriculum in Church Music.



Miss Odessa Holt

Miss Holt has spent most of her life in Arkansas as teacher, social service worker, and church music leader. She is a resident of Mount Ida and has been a member of the high school faculty there for a number of years. She gives all her time to the teaching of vocal and instrumental music now, and to serving as director of music in her own church and throughout the state of Arkansas in Summer Music Schools, as an associate in the church music field.

Miss Holt excels in her original method of teaching rudiments of music and will make this class intensely interesting to all who need such instruction. She holds a Bachelor of Science Degree in Education from the University of Arkansas and has done private study in voice and piano in Little Rock, St. Louis, and Chicago. She attended Church Music Institute here and at Ridgecrest.

Christ, and that we may better teach the Christian people that we have, now."

There are very few Sunday Schools in our state which could not become standard with a little extra effort. There are many Sunday Schools which are already doing standard work but have not checked the standard to see just where they stand. If you have not checked your standard recently, will you please do so? For application blanks and information, please write your State Sunday School Superintendent, 212 Baptist Building, Little Rock.

"The Junior Baptist"

A new Training Union study course for Juniors will be ready for use May 1, 1948. The seal for Course VII, Doctrine and Church study course for Juniors, will be awarded on completion of this book. This interesting book for Junior boys and girls was written to explain our Baptist beliefs. Quoting the author: "After studying this book you should know and be able to explain our Baptist doctrine, you should know how Baptists differ from other denominations and why they are different."

Lest You Forget

During the month of April special efforts have been made to increase the enrolment of the Training Union. May 2 is "Join the Training Union" day in Arkansas. The activities of the day should include an all out visitation of absentees and prospects, also, a special effort should be made to have excellent programs in assemblies and in individual unions.

The first night a person wishes to join the Training Union he should be received as a new member and placed on a group, also on a committee.

Training Union directors or pastors are asked to report the number of new members to Ralph Davis, state Training Union director, Little Rock. Fill out the form that was carried in the April 22 issue of the Arkansas Baptist and mail to Mr. Davis.

Purpose of the Standard

The purpose of the standard is not to give the church something to do whereby they may receive a pennant and put it on the wall in the front of the auditorium, it is to give the Sunday School a well-balanced plan of work. It is an outline of work. A good Sunday School should endeavor to do all the things in the standard, anyway. Study the standard point by point and see if you can find anything which would not lead your Sunday School to be a better one. Surely, no one would ask, "Why should I have a better Sunday School?" The answer to that question would be a sacred answer. "That we may win more souls to

If a man is not familiar with the Bible he has suffered a loss he had better make all possible haste to correct.—Theodore Roosevelt.

The Southern Baptist Chaplains Association, in which all Southern Baptist chaplains and former chaplains are eligible, will hold its annual meeting during the Southern Baptist Convention meeting in Memphis.

The place for this meeting is the King Cotton Hotel, Thursday, May 20, at 1:00 P. M. Tickets will be on sale at the chaplains booth for \$1.50 each.

BOOK BINDING
 Old Bibles, Books rebound like new. Magazines and all types of book-binding. Fine workmanship at reasonable prices.
Norris Book Binding Co.
 Gardner Bldg.—102 Nichols Ave.
 Greenwood, Miss.

GOWNS
 Pulpit and Choir
 Headquarters for RELIGIOUS SUPPLIES
 VESTMENTS • HANGINGS
 STOLES • EMBROIDERIES
 Communion Sets • Altar Ap-
 pointments • Altar Brass Goods
National CHURCH GOODS
 SUPPLY COMPANY
 CATALOG ON REQUEST 621-23 ARCH STREET, PHILADELPHIA 7, PA.

HEFFNER ELECTRIC
 1119 BATTERY ST.
 Electric Appliances
 • Bought •
 • Rebuilt •
 • Traded •
 • Sold •
 Phone 2-8629

QUARTERLY REPORT

Total Cash Contributions Received in Office of General Secretary of Executive Board,
Arkansas Baptist State Convention, Little Rock—

DURING THE FIRST QUARTER OF 1948

(This Statement Does Not Include Receipts for Ministers Retirement Fund)

We are making the usual request that errors be checked and that B. L. Bridges, 200 Baptist Building, Little Rock, be notified of corrections.

Church and Pastor	Undesignated Co-operative Program Con- tributions	Ouachita Campaign Designated Contribu- tions	Other Designated Contribu- tions				
ARKANSAS VALLEY ASSOCIATION							
Barton—J. B. Measel	\$ 24.00	—	—				
Beck's Chapel—J. J. Franklin	—	—	—				
Brinkley—B. F. McDonald	30.00	—	—				
Brinkley, First—H. L. Lipford	345.00	80.00	—				
Clarendon—John Holston	124.34	—	—				
Crossett, First	600.00	375.00	70.60				
Eagle Lake, Cross Roads—Edward Persons	5.66	—	—				
Ebenezer—Orville McGuire	18.00	—	—				
Eden	—	—	—				
Elaine—Bennie Pearson	352.03	—	—				
Friendship—E. G. Waddell	—	—	9.00				
Helena, First—Ralph Douglas	450.00	255.00	7.00				
Helena, North—E. M. Bragdon	—	—	—				
Hickory Ridge	—	—	—				
Hughes—W. D. Wallace	460.00	—	350.92				
Lexa—James High	30.00	—	—				
Marianna, First—W. F. Couch	2,290.86	—	2.00				
Mexican	—	—	—				
Monroe	13.14	—	—				
Moro	—	—	—				
Onelda—J. B. Measel	10.00	—	—				
Petty's Chapel	—	—	—				
Rehobeth	—	—	—				
Turner—E. G. Waddell	—	—	—				
Twin Bridges—B. F. McDonald	11.77	—	17.80				
West Helena—D. D. Smothers	975.00	134.45	9.00				
New Hope—C. S. Ramseyer	—	—	—				
TOTALS	\$ 5,116.14	\$ 469.45	\$ 395.72				
BARTHOLOMEW ASSOCIATION							
Antioch—Orville McGuire	—	—	—				
Beech Creek—Claud Hughes	—	—	—				
Bethel	—	—	—				
Beulah	—	—	—				
Cominto—Edd Cloud	6.00	10.00	—				
Corinth "A"—Dewey Brockwell	9.00	25.00	—				
Corinth "B"—Jack Jordan	—	—	—				
Community	—	—	—				
Enon—Edd Cloud	10.93	—	13.73				
Fellowship—Q. M. Powell	—	—	—				
Florence	36.00	—	—				
Fountain Hill—Rella Nixon	75.00	—	25.00				
Hamburg, First—Stanley Jordan	1,200.00	400.00	6.00				
Holly Springs (Hermitage)	45.00	—	3.00				
Jarvis Chapel	15.00	—	—				
Judson	—	—	—				
Ladelle	6.43	—	—				
Macedonia—L. J. Tucker	—	—	—				
Magnolia—T. H. Berry	15.00	—	20.00				
Marsden—F. E. Canady	5.00	—	6.36				
Meridian—Dewey Brockwell	—	—	—				
Monticello, First—R. D. Washington	396.00	187.50	232.78				
Monticello, Second—W. A. Lindsey	181.23	40.00	—				
Mt. Olive, No. 1—M. P. Timberlake	—	—	—				
Mt. Olive, No. 2—S. E. Powell	80.64	—	—				
Mt. Zion—L. J. Tucker	17.50	—	—				
New Liberty	5.00	—	—				
North Crossett—Harold White	60.00	25.86	—				
Northside, Monticello—J. T. Warbington	—	—	—				
Old Union—W. A. Lindsey	—	—	—				
Pattsville	—	—	—				
Pleasant Grove—Keith Babb	13.00	—	—				
Prairie Grove	—	—	—				
Saline	3.00	—	—				
Sardis—M. P. Timberlake	16.00	—	—				
Selma	—	—	—				
Shiloh	35.00	—	—				
Union Hill—R. R. Shreve	—	—	—				
Unity—Tom Barnes	8.20	—	—				
Warren, First	900.00	375.00	25.76				
Warren, Immanuel—Keith Babb	55.27	30.00	31.65				
Wilmar—Bob Mays	—	—	13.53				
TOTALS	\$ 3,817.88	\$ 1,468.36	\$ 448.41				
BENTON COUNTY ASSOCIATION							
Bentonville—J. B. Maxwell	150.00	75.00	15.00				
Centerton—Melvin Coffelt	57.77	—	3.00				
Decatur—J. A. Scoggins	44.85	—	—				
Garfield—W. R. Reeves	11.00	—	—				
Gentry—Carl P. Nelson	187.11	—	—				
Gravette—Edgar Harvey	21.65	—	—				
Gum Springs	30.00	—	6.20				
Highfill—E. G. New	40.00	50.00	110.00				
Logan	—	—	—				
Lowell—Troy E. Brooks	—	—	—				
Mason Valley—John Terry	10.50	—	—				
Monte Ne	61.28	—	—				
Pea Ridge—Phil J. Beach	72.38	—	—				
PLEASANT HILL ASSOCIATION							
Pleasant Hill—C. C. Roberts	17.00	—	—				
Rogers, First—Rel Gray	544.31	—	—				
Rogers, Immanuel	66.68	—	—				
Siloam Springs, First—B. N. Simmons	375.00	—	—				
Sulphur Springs—Frank Batterton	13.70	—	—				
Twelve Corners	13.00	—	—				
TOTALS	\$ 1,716.23	\$ 488.30	\$ —				
BIG CREEK ASSOCIATION							
Enterprise	—	—	—				
Flora	—	—	—				
Gum Springs	—	—	—				
Hardy—R. A. Hill	—	—	—				
Mammoth Springs—Alphus Capps	—	—	—				
Mt. Zion—J. W. Shields	22.92	—	—				
Mt. Calm—J. W. Shields	22.50	—	—				
Salem—Tom Poole	45.00	—	—				
Shady Grove—J. W. Shields	11.25	—	—				
Spring River—Ben Meeks	—	—	—				
Viola—J. M. Langston	—	—	—				
TOTALS	\$ 101.67	\$ —	\$ —				
BLACK RIVER ASSOCIATION							
Alicia	—	—	—				
Amagon	—	—	—				
Banks	—	—	—				
Black Rock	25.00	—	—				
Clear Springs—Chas. D. Tibbels	10.00	—	—				
Clover Bend	3.00	—	—				
Diaz—F. E. Weaver	25.00	—	—				
Grubbs—Walter L. Phillips	—	—	—				
Horse Shoe—J. N. Weaver	—	—	—				
Hoxie—J. V. Chandler	30.00	—	—				
Imboden	22.50	—	—				
Jacksonport—F. F. Weaver	15.00	—	—				
New Hope, No. 1—A. A. Teele	44.34	—	—				
New Hope, No. 2	—	—	—				
Newport, First—Chas. F. Wilkins	75.00	—	—				
Old Walnut Ridge—Geo. McGehey	—	—	—				
Filgrims' Home—Robert Traw	—	—	—				
Pleasant Valley	—	—	—				
Portia—E. H. Hamblin	—	—	—				
Ravenden—O. L. Davis	—	—	—				
Sedgwick—J. T. Tippit	6.00	—	—				
Smithville—S. W. McReynolds	45.00	—	—				
Swifton—Darrell Ball	—	—	—				
Tuckerman—Ray B. Rhyne	60.00	—	—				
Walnut Ridge, First—Blake Westmoreland	168.00	—	—				
TOTALS	\$ 528.84	\$ —	\$ —				
BOONE-CARROLL ASSOCIATION							
Alpena Pass—B. L. Dorman	—	—	—				
Batavia, First	15.00	—	—				
Bear Creek Springs—J. W. Henderson	31.26	—	—				
Bellefonte—Guy A. Hopper	15.00	—	—				
Berryville—Gray Evans	97.50	—	75.00				
Blue Eye, First—A. E. Bressler	15.00	—	—				
Burlington	28.00	—	—				
Denver	—	—	—				
Eureka Springs, First—W. T. Coston	55.60	—	—				
Gaither—Truman Logan	15.00	—	—				
Grandview	15.00	—	—				
Green Forrest	30.00	—	—				
Grubb Springs—Guy A. Hopper	18.00	—	—				
Harrison, First—E. E. Griever	568.65	—	7.00				
Highland	—	—	—				
Hopewell	10.00	—	—				
Lead Hill	15.00	—	—				
Mt. Zion (Hill Top)	—	—	—				
Mundall	—	—	—				
New Hope—E. F. Cox	32.50	—	—				
Oak Grove	—	—	—				
Omaha	—	—	—				
Rock House	—	—	—				
Rock Springs—Dan Champlin	—	—	—				
Shady Grove	—	—	—				
Union—Hugh McGehee	7.50	—	—				
Valley Springs—Guy A. Hopper	9.00	—	—				
White Oak—Troy Eoff	—	—	—				
TOTALS	\$ 978.01	\$ 82.00	\$ —				
BUCKNER ASSOCIATION							
Abbott—J. B. Nobles	—	—	—				
Bates—Eugene M. Greenfield	—	—	—				
Blansett—John Staggs	—	—	—				
Cauthron—Harmon Allen	10.00	—	—				
Cedar Creek—Eugene M. Greenfield	—	—	—				
Dayton—Billy Gene Hickem	10.37	—	—				
Fellowship (Witcherville)—Felix Quinton	12.00	—	—				
Forrester—J. E. Evans	20.00	—	—				
Friendship, Black Fork	9.00	—	—				
Hartford—L. P. Thomas	15.00	—	—				

QUARTERLY REPORT

(CONTINUED FROM PAGE ELEVEN)

Church and Pastor	Undesignated Co-operative Program Contributions	Ouachita Campaign Designated Contributions	Other Designated Contributions
Haw Creek			
Hon—Harmon Allen			
Huntington—Mark Flite			
Ione—Houston Grayson	20.00		
James Fork—Eugene M. Greenfield			
Lucas			
Mansfield—Karl McClendon	160.00		
Midland—Harold Plunkett	12.00		
Mt. View—T. M. Finney			
Mt. Gilead—John Staggs			
New Home—W. T. Gilbreath			
New Providence—S. C. Simpson	5.00		
Parks—A. W. Upchurch	26.36		
Pilot View—T. M. Finney			
Pleasant Grove, No. 2—T. M. Finney	12.00		
Pleasant Grove, No. 3			
Poteau			
Rock Creek	9.00		
Salem—Harmon Allen			
Salem, No. 2			
Shiloh—John Staggs			
Union Hope—Ed Loyd	6.00		
Unity—John Staggs			
Waldron—Vernon E. Yarbrough	538.01		20.00
West Harmony			
West Hartford—J. E. Evans	50.54		50.00
Piney—John Staggs			
Clark's Chapel—Earl Peoples			
TOTALS	\$ 915.28		\$ 101.75

BUCKVILLE ASSOCIATION

Avant (Sweet Home)	1.82		
Buckville	10.00		
Cedar Glades—Laborn Sharp	4.30		
Little Country Church—Bert Bashaw			
Mt. Tabor—Laborn Sharp			
Mt. Valley—Louis Dodd			
Onyx—Bert Bashaw			
Prairie Grove (Red Haw)	1.00		
Rock Springs—N. A. Sutton			
Miscellaneous	15.00		
TOTALS	\$ 32.12		

CADDO RIVER ASSOCIATION

Alamo			
Amity—W. B. Essman	25.00		
Black Springs—Ray Barnett	12.00		
Caddo Gap	15.00		
Concord (Aly)—J. P. Emery	7.30		
Glenwood—Chas. Hampton	75.00		5.00
Liberty—Carlos Jones			
Little Hope	6.00		
Lower Big Fork—Jas. H. Miller			
Mena, First—Jas. A. Overton			29.16
Mt. Gilead—Carlos Jones			
Mt. Home			
Mt. Ida—D. B. Bledsoe	150.00	45.00	74.63
Norman	95.39		76.00
Oak Grove			
Oden			
Pine Ridge			
Refuge—J. P. Emery	8.00		
Sulphur Springs—John Liles	22.00	6.15	24.51
Rosboro—Coy D. Sims			
Washita—J. P. Emery			
Bonnerdale—G. O. Travis			
TOTALS	\$ 415.89	\$ 51.15	\$ 209.30

CAREY ASSOCIATION

Bearden—Edgar Griffin	177.08	88.53	3.00
Dalark—Claud Stewart	8.00		
Fordyce—J. T. Elliff	1,454.19	500.01	39.00
Hampton—Chas. A. Maule	30.00		36.89
Harmony—Russell Hunt	6.00		
Manning—John Causey	15.00		
New Hope—Roy Hilton	21.00		
Ouachita—J. M. Basinger	30.00		
Prosperity—Wallace Denton	6.00		
Shady Grove—John Causey	5.00		
Sparkman, First—J. M. Basinger	255.00		
Thornton—Russell Hunt	64.70		

Tinsman—Wallace Denton			
Tulip			
Willow			
Holly Springs—Robert Nash			
TOTALS	\$ 2,071.97	\$ 588.54	\$ 7

CAROLINE ASSOCIATION

Austin Station—Van Griffin	9.00		
Baugh Chapel			
Biscoe—T. W. Dove			
Brownsville			
Cabot—Dale McCoy	150.00	5,000.00	
Camp Ground—Van Griffin	6.00		
Caney Creek—E. Rawlings	66.00		
Carlisle—Guy D. Magee	188.65		
Chambers			
Coy—E. J. Tankersley	87.51		
Des Arc—Ernest Baker	40.00	59.01	
DeValls Bluff—Maxwell Baker	20.00		
England, First—W. B. Pittard	300.00	150.00	
Hazen, First—C. R. McCollum	70.00		
Lonoke—W. M. Pratt	1,060.29	100.00	
Mountain Springs			
New Hope—C. H. Dunaway	10.00		
Oak Grove—C. H. Dunaway			
Old Austin—Van Griffin	6.00		
Pleasant Hill—Sam King	6.00		
Pleasant Valley	5.00		
Steel Bridge—Arthur Hart	1.50		
Toltec—J. T. Cravens	9.00		
Ward—J. O. Miller	31.92		
Wattensaw—H. B. Todd	20.00	30.00	
Whippoorwill			
TOTALS	\$ 2,086.87	\$ 5,339.01	\$ 112

CENTENNIAL ASSOCIATION

Almyra—D. O. Stuckey	375.00		
Bethel (Brummit)			
DeWitt, First—Douglas White	300.00	105.00	
Humphrey—R. D. Harris	40.00		
New Hope (Hagler)—C. R. Cooper	131.93		
Reydel			
Stuttgart, First—Ralph Dodd	761.25		
Tichnor—Frank Jeffrey	15.00		
TOTALS	\$ 1,623.18	\$ 105.00	\$ 58

CENTRAL ASSOCIATION

Antioch—Everett Taylor	30.00		
Bauxite—R. A. Butler	470.25		
Benton, First—Virgil Rose	1,725.00	30.00	375
Bethel	1.51		
Gravel Hill	15.00		
Harvey's Chapel	30.00		
Hot Springs, Central—Clyde Hart	900.00	2,271.38	
Hot Springs, First—John Dodge	600.00	950.00	39
Hot Springs, Park Place	750.01	290.57	22
Hot Springs, Second—O. L. Bayless	450.00	375.00	
Jessieville—Ernest Moseley	15.00		
Lake Hamilton—Joe Melton	108.20		
Lonsdale—F. W. Cate			
Malvern, First—T. K. Rucker	900.00	450.00	
Malvern, Third—Wm. Kersh	77.00		
Memorial			
Mountain Pine—C. H. Seaton	30.00	12.00	
Mt. Vernon			
Mountain View—I. N. Barber	20.00		
North Fork			
Owensville	18.00		
Perla	7.70		
Piney—Edward Anderson	30.00		
Pleasant Hill—Mack S. Gates			
Shorewood Hills	68.34		
Union—Reeves Wright	13.30		
Walnut Valley—Chester Ware	89.57		
Gum Springs—I. N. Barber			
TOTALS	\$ 6,348.88	\$ 4,378.95	\$ 599

CLEAR CREEK ASSOCIATION

Allx	3.00		
Alma—L. E. Cunningham	80.00		
Altus—G. L. Lonsberry			
Bethlehem			
Cedarville—O. Corbin	11.84		
Clarksville, First—W. L. Yelldell	300.00		
Coal Hill—G. L. Lonsberry	18.00		
Concord—S. A. Haley	15.00		
Dyer			
Fine Springs			
Forrest Mission—Claudie Smith	16.32	10.00	
Hagarville—E. McGoldrick			
Mountain Top—E. H. McAllister			
Mulberry—J. N. Vandiver	62.93		
Oak Grove—A. D. Kent	19.00	33.35	
Oakland	6.00		
Ozark—Don Hook	60.00	300.00	
Ozone—F. D. Painton	10.00		
Rudy—H. J. Morris			
Shady Grove	12.00		
Shibley	3.00		
Spadra—H. K. Williams			
Kibler—H. G. Millam	51.77		
Trinity (Crawford Co.)—H. J. Morris			
Trinity (Johnson Co.)—Pat Shields			
Union Grove—H. K. Williams	12.00		
Uniontown—L. H. Harwell	1.75		
Van Buren, First—T. H. Jordan	450.00	315.00	
Webb City—Irving Crossland			
White Oak—E. H. McAllister			
Zoar			
TOTALS	\$ 1,132.61	\$ 658.35	\$ 4

CONCORD ASSOCIATION

Bailey Hill—A. G. Escott	100.00		
Barber—Frank Cleveland			
Bethlehem—W. O. Flanagan			
Bloomer	20.00		
Booneville, First—W. W. Grafton	780.00	200.00	
Branch			
Calvary, Ft. Smith—L. H. Davis	1,157.58	250.03	
TOTALS	\$ 2,017.58	\$ 450.03	\$ 2

(CONTINUED ON PAGE THIRTEEN)

Take Your Programs to Shut-ins With

AIR KING PORTABLE WIRE RECORDER and PHONOGRAPH COMBINATION

Record from phonograph . . . radio . . . or your own voice. Instant playback, makes permanent records, erases for re-use.

Available for Immediate Delivery

Retail Price

\$139.50

Federal Tax Included

DAVID WHITE RADIO SUPPLY
LOUD SPEAKER SYSTEMS FOR SALE

1222 Main

P. O. Box 408

Phone 5-0555

LITTLE ROCK, ARKANSAS

QUARTERLY REPORT

(CONTINUED FROM PAGE TWELVE)

Church and Pastor	Undesignated Co-operative Program Contributions	Quachita Campaign Designated Contributions	Other Designated Contributions
Charleston—C. H. Jones	150.00	—	—
Excelsior—Harold Plunkett	36.00	—	—
Fort Smith, First—B. V. Ferguson	2,250.00	1,880.00	98.00
Glendale—Houston Grayson	14.00	—	—
Grand Avenue, Ft. Smith—J. Earl Bryant	225.00	—	21.54
Greenwood	329.76	25.00	17.90
Hackett	—	—	—
Immanuel, Ft. Smith	1,144.49	—	53.50
Lavaca	50.00	—	—
Long Ridge	—	—	—
Magazine—L. A. Thompson	49.00	—	6.00
Mill Creek—H. E. Marsh	6.00	8.00	—
Mixon—Frank Cleveland	—	—	—
Mt. Zion—S. C. Simpson	—	—	—
Oak Grove, Ft. Smith—P. J. Crowder	210.40	150.00	—
Paris—H. C. Seefeldt	850.35	202.50	154.73
Ratcliff	—	—	—
Rye Hill—L. L. Gilliam	34.00	—	32.30
South Fort Smith—W. A. Crow	308.48	—	4.00
Union Hall	—	—	—
Vesta	—	—	—
TOTALS	\$ 7,715.06	\$ 2,715.53	\$ 466.34

CURRENT RIVER ASSOCIATION

Bethany—L. W. Fitzgerald	3.00	—	—
Biggers—Alvin Allison	—	—	—
Columbia—Jarrett—S. W. Wilkerson	—	—	—
Corning—L. C. Tedford	180.00	—	100.00
Dell—R. F. Grant	—	—	—
Hopewell—C. F. Gwinup	75.00	—	101.50
McArk—D. C. Applegate	—	—	—
Mt. Pleasant—A. B. Whidley	—	—	—
New Home—Clay Roach	—	—	—
Oak Grove	12.00	—	10.00
Pocahontas—W. H. Hunt	90.00	125.00	—
Ravenden Springs—S. W. Wilkerson	9.00	—	—
Reyno—Clay Roach	6.00	—	—
Shiloh (Clay County)—D. C. Applegate	—	—	—
Shiloh (Randolph County)—C. L. Davis	—	—	20.00
Success—J. F. Bow	—	—	—
Witts Chapel	9.00	—	—
TOTALS	\$ 384.00	\$ 125.00	\$ 231.50

DARDANELLE-RUSSELLVILLE ASSOCIATION

Atkins	206.04	40.00	—
Baker's Chapel—Claude Stewart	10.00	—	40.00
Centerville	—	—	—
Danville—John Freeman	96.00	—	—
Dardanelle—J. A. O. Russell	198.37	104.00	—
Dover—Sid Gotcher	20.00	—	—
East Point—J. D. Seymour	—	—	20.40
Flat Rock	—	—	—
Havana—Geo. Findley	—	—	—
Hopewell—J. D. Seymour	—	—	—
John Grace Memorial (Belleville)—George Findley	5.00	—	—
J. A. Taylor, Bluffton	3.00	—	—
Knoxville—Virgil Logan	26.50	13.17	—
London	5.00	—	—
Moreland	—	—	—
Mountain Springs	—	—	—
Mt. Vernon	—	—	—
New Hope—A. B. Cray	—	—	—
Ola—Gus O. Douglas	9.00	—	10.00
Piney—Sid Gotcher	—	—	—
Pittsburg	6.00	—	—
Plainview—Gus O. Douglas	—	—	18.75
Pleasant Hill (Briggsville)	—	—	—
Plumerville—L. L. Jordan	49.95	—	11.91
Pottsville	5.00	10.00	16.00
Russellville, First	1,018.00	224.22	12.00
Whitley	—	—	—
TOTALS	\$ 1,657.86	\$ 391.39	\$ 129.06

DELTA ASSOCIATION

Arkansas City—Nelson Greenleaf	80.00	—	6.00
Aulde—Jim Matthews	—	—	—
Bellaire—Glen Wright	25.00	—	—
Bethel—A. J. Ready	13.84	—	—
Boueff River	—	—	—
Boydell—T. J. Barnes	—	—	—
Central—Andrew Heskett	5.00	—	—
Chicot—Roy C. Maddox	10.00	—	—
Collins—J. L. Stone	—	—	—
Crooked Bayou—J. M. Moore	3.50	—	—
Cypress Creek—J. W. Wilkerson	—	—	—
Daniel's Chapel—J. Fred Wesner	9.00	—	—
Dermott—E. F. McDonald	91.00	—	—
Eudora—Clarence Cutrell	800.00	—	60.00
Gaines—E. H. McMurray	—	—	—
Halley	—	—	—
Jennie—R. L. Blackwell	—	—	—
Kelso—Howard C. Rash	—	—	—
Lake Village—H. O. Malone	723.15	55.00	30.00
McArthur	—	—	—
McGehee—Theo T. James	809.25	150.00	48.00
Midway—A. U. Kinney	—	—	—
Montrose—Clyde E. Parrish	15.00	—	—
Mt. Pleasant—F. O. Anders	50.00	—	10.50
New Hope—A. J. Ready	27.00	—	23.00
New Liberty—W. F. Lynn	—	—	—
Oak Grove—J. M. Devine	—	—	—
Omega	—	—	—
Parkdale—Claud Hughes	16.00	—	—
Pleasant Ridge	—	—	—
Portland, First—John P. Whitlow	80.00	—	5.00
Richland—J. C. Higgenbotham	—	—	—
Ryecraft	—	—	—
Tillar—Dale Taylor	75.00	—	—
Union Hill	—	—	—

Watson—Sidney Oxendine	28.56	—	—
Willmot—Dillard S. Miller	24.00	—	—
TOTALS	\$ 2,885.30	\$ 205.00	\$ 3

FAULKNER ASSOCIATION

Bee Branch—W. G. Dove	—	—	—
Beryl—P. E. Turner	75.00	—	—
Bono—Grady Sellers	6.00	—	—
Brumleys Chapel—James D. Reed	12.00	—	—
Cadron Ridge—Grady Sellers	30.00	—	—
Conway, First—H. B. Tillman	1,000.00	250.00	—
Conway, Second—Hugh Owen	135.00	—	—
Emmanuel—W. G. Dove	5.00	—	—
Formosa—C. E. Goatcher	—	—	—
Friendship	5.00	—	—
Happy Hollow—T. W. Hayes	7.50	—	—
Holland—Floyd Ward	3.00	—	—
Lone Star	11.89	—	—
Mayflower—W. G. Griswood	20.00	—	—
Mt. Vernon—T. W. Hayes	45.00	—	—
New Bethel (Nutters Chapel)—Don Jones	—	—	—
Oak Bowery—Chas. Riley	6.00	50.00	—
Pickles Gap—T. W. Hayes	30.00	—	—
Pleasant Grove—P. E. Turner	12.09	12.48	—
Southside	15.00	—	—
Union Hill—Leonard Dove	—	—	—
Wooster—J. S. Rogers	5.00	—	—
TOTALS	\$ 1,423.48	\$ 312.48	\$ 1

GAINESVILLE ASSOCIATION

Austin	12.50	—	—
Browns Chapel	—	—	—
Greenway—S. R. Pillow	12.50	—	—
Harmony—Fred Lewis	—	—	—
Leonard—Fred Lewis	50.00	—	—
Lone Prairie	—	—	—
New Hope—Bill Johnson	31.35	—	—
Nimmons—E. W. Gray	12.00	—	—
Nutts Chapel—Tom Arnold	15.00	—	—
Peach Orchard	12.00	—	—
Piggott—J. O. Young	378.10	—	—
Pollard—Fred Lewis	—	—	—
Rector—E. C. Polk	205.00	100.00	—
St. Francis—Chas. Holland	—	—	—
TOTALS	\$ 728.45	\$ 100.00	\$

GREENE COUNTY ASSOCIATION

Alexander Chapel—Paul Harlen	45.00	—	—
Beech Grove—Donald Campbell	15.00	—	—
Bethel Station—Bill Lewis	—	—	—
Big Creek—Bill Lewis	—	—	—
Brown's Chapel—Tommie Henson	80.00	—	—
Cache Valley—A. C. Rudloff	30.00	—	—
Center Hill—Carroll Gibson	—	—	—
Childress Chapel—J. O. Miles	45.00	—	—
Delaplaine—Eugene Webb	—	—	—
Eight Mile—A. O. Collier	—	—	—
Epsaba	—	—	—
Fairview—J. W. Whitlock	20.00	—	—
Harmony	—	—	—
Lafe—Kermit Earley	—	—	—
Marmaduke—C. E. Robertson	63.50	63.50	—
Mounds—A. C. Rudloff	78.25	—	—
Mt. Hebron—J. S. Compere	12.50	—	—
New Friendship—Alvin Allison	75.00	—	—
New Hope	6.00	—	—
New Liberty—Elmo Frey	—	—	—
Paragould, East Side—Jeff Rousseau	179.76	100.00	—
Paragould, First—Irving Prince	2,100.40	150.00	—
Pleasant Grove	—	—	—
Pleasant Hill—Tommie Henson	12.00	—	—
Pleasant Valley—Virgil Tarvin	—	—	—
Robbs Chapel—Virgil Tarvin	25.00	—	—
Rock Hill—Joe Hester	10.20	—	—
Stanford—J. O. Miles	45.00	—	—
Stonewall	—	—	—
Union Grove	—	—	—
Unity—Donald Campbell	5.00	—	—
Village—L. W. McReynolds	5.50	—	—
Vine's Chapel—Moran Burge	—	—	—
Walcott—Amos Greer	81.02	—	—
Walls Chapel—Walter Rogers	15.00	—	—
Brighton—Jeff Rousseau	—	—	—
TOTALS	\$ 2,949.13	\$ 313.50	\$ 35

(CONTINUED ON PAGE FOURTEEN)

TWO Custom-Built AMBULANCES
NOW AVAILABLE DAY OR NIGHT

PHONE
4-0251



WE
CARE!

Burial Protection For All the Family
Phone 4-0252 For Representative—Low Rates

DRUMMOND & COMPANY
FUNERAL DIRECTORS

ROBERT GREEN
President

1014 Main Street
Little Rock

BERNIE HOFF
Secretary

QUARTERLY REPORT

(CONTINUED FROM PAGE THIRTEEN)

Church and Pastor	Undesignated Co-operative Program Contributions	Ouachita Campaign Designated Contributions	Other Designated Contributions
HARMONY ASSOCIATION			
Aithelmer—W. J. Morris	30.00	—	—
Anderson Chapel	6.00	—	—
Bogy Chapel	—	—	—
Crigger Mission—T. S. Cowden	—	—	—
Dumas	375.00	375.00	12.00
Gideon—J. H. Chavis	—	—	—
Gould—L. W. Williams	60.00	—	60.00
Greenlee Memorial—Aubrey Pucket	—	—	—
Hardin—Ralph Glover	—	—	—
Hickory Grove—T. S. Cowden	12.00	—	—
Kingsland—Don Williams	30.00	—	10.00
Lee Memorial—Chas. Finch	90.00	—	—
Matthews Memorial—L. G. Whitehorn	162.47	—	—
New Bethel	—	—	—
Oak Grove—R. D. Hughes	30.00	—	3.00
Pine Bluff, Calvary—E. W. Johnson	—	—	3.00
Pine Bluff, First—A. B. Pierce	3,302.24	—	161.25
Pine Bluff, Harmony—Clyde Cutrell	195.79	—	—
Pine Bluff, Immanuel—Paul Fox	720.00	—	12.00
Pine Bluff, Second—C. C. McAtee	390.00	150.00	40.02
Pine Bluff, Southside—Lloyd Sparkman	1,085.00	189.90	88.18
Pine Bluff, West Side—J. F. Brown	—	—	—
Plainview—G. E. Nethercutt	—	—	—
Plum Bayou (Wright)—A. F. Robinson	20.00	—	19.00
Rankin's Chapel—J. H. Chavis	—	—	—
Rison—T. T. Newton	222.00	—	100.00
Shelby Memorial (Wabbaseka)	—	—	—
Star City—Luther Dorsey	587.34	117.47	—
Tyro	—	—	—
White Sulphur Springs—Claude Bumpus	20.00	—	25.19
Yorktown—T. S. Cowden	—	—	—
Central—T. L. Grave	—	—	—
TOTALS	\$ 7,337.84	\$ 832.37	\$ 533.64

Church and Pastor	Undesignated Co-operative Program Contributions	Ouachita Campaign Designated Contributions	Other Designated Contributions
HOPE ASSOCIATION			
Arabella Heights—Kenneth Wilkinson	15.00	—	—
Anderson Union	—	—	—
Beech Street, Texarkana	1,688.15	324.00	78.00
Boyd	—	—	—
Bradley—Claude Stripling	130.00	—	—
Canal—S. A. White	—	—	—
Canfield—Claude Stripling	23.43	—	20.84
Central, Magnolia—L. L. Hunnicutt	1,200.00	300.00	185.00
College Hill—C. G. Davis	245.55	109.50	130.00
Doddridge—A. L. Taylor	30.00	—	—
Eastview—Wallace A. Ely	89.70	—	—
Evergreen—Odell Rhyne	—	—	—
Fouke, First—Howard Wilson	87.33	—	2.00
Garland—C. S. Carlton	5.00	—	—
Genoa—J. T. Midkiff	6.00	—	—
Guernsey	—	—	—
Haley Lake—A. W. Wagnon	—	—	—
Harmony Grove—Chas. Cornell	—	—	—
Hope, First—S. A. Whitlow	1,620.00	800.00	28.00
Lewisville—J. W. Royal	249.99	—	—
Macedonia, No. 1	—	—	—
Macedonia, No. 2	—	—	—
Mandeville	—	—	—
Mt. Zion—J. P. Olive	18.00	—	—
Piney Grove	33.05	—	—
Pisgah—Harrison Pike	—	—	—
Red River—A. W. Wagnon	—	—	—
Rocky Mound—Frank R. Eaton	4.50	—	—
Shiloh—Geo. DeLaughter	—	—	—
South Texarkana—Orlin Allen	12.30	—	—
Spring Hill—James Pleitz	—	—	—
Stamps, First—Walf Hamilton	705.04	—	30.00
Sylverino—C. E. Pierce	—	—	—
Tennessee—Harrison Pike	—	—	—
Trinity—Warren Nutt	47.93	—	3.00
Troy—Frank Eaton	—	—	—
Calvary, Texarkana—C. C. Ussery	100.00	—	—
TOTALS	\$ 6,310.97	\$ 1,533.50	\$ 476.84

Church and Pastor	Undesignated Co-operative Program Contributions	Ouachita Campaign Designated Contributions	Other Designated Contributions
INDEPENDENCE ASSOCIATION			
Batesville, First—E. P. J. Garrott	750.00	158.08	798.18
Calvary, E. Batesville—Byron King	45.00	—	3.00
Cord	—	—	—
Cushman	—	—	—
Desho—Hal Gallop	6.00	—	—
Pilgrim's Rest—W. J. Smith	—	—	—
Pleasant Plains	50.00	—	—
Rehobeth, Moorefield—Art Jones	30.00	—	—
Rosie—G. M. Roberts	—	—	—
Ruddell Hill—Doyle Creech	15.00	—	22.50

Salado	13.00	—	—
Salem	—	—	—
Sulphur Rock—G. M. Roberts	—	—	—
Union Grove—E. I. Sneed	20.43	—	—
West Batesville—Irwin Mosler	300.00	187.50	—
White River (Oil Trough)	8.00	—	—
TOTALS	\$ 1,237.43	\$ 345.58	\$ 961.01

Church and Pastor	Undesignated Co-operative Program Contributions	Ouachita Campaign Designated Contributions	Other Designated Contributions
LIBERTY ASSOCIATION			
Caledonia	—	—	—
Callion—P. C. Church	50.00	—	—
Camden, First—T. L. Harris	1,800.54	975.00	—
*Chidester—R. C. Dalley	300.00	—	—
Cross Roads—Raymond Crofts	—	—	—
Cullendale—J. Elmer Morgan	878.34	—	—
Ebenezer	25.00	—	—
El Dorado, First—Sam Reeves	3,750.00	4,571.15	—
El Dorado, Immanuel	960.40	—	—
El Dorado, Parkview—H. B. Marks	88.61	—	—
El Dorado, Second—Jesse Reed	713.31	600.00	—
El Dorado, West Side—C. A. Johnson	180.00	375.00	—
Elliott—Garland Anderson	372.00	50.00	—
Felsenthal—Ted Lann	—	—	—
Galilee—Grant Pickens	66.00	—	—
Huttig	—	—	—
Joyce City—Chas. W. Nash	216.00	25.00	—
Junction City—C. E. Archer	284.44	—	—
Knowles Chapel—L. R. Mitcham	27.91	—	—
Laple—R. O. Ekrut	—	—	—
Lawson—L. J. Tucker	25.00	—	—
Liberty—L. R. Mitcham	5.00	—	—
Lisbon	—	—	—
Louann—G. Paul Starnes	333.02	—	—
Midway—F. E. Canady	—	—	—
New London—L. J. Tucker	—	—	—
Norphlet—Loyal Prior	1,117.15	615.00	—
Norris	15.85	—	—
Salem—Hugh Cantrell	6.00	—	—
Shuler	30.00	—	—
Smackover—Ralph Reasor	732.26	732.26	—
Snow Hill	15.00	—	—
Stephens—Hugh Cantrell	708.78	—	—
Strong—R. O. Ekrut	138.31	—	—
Three Creeks	10.00	—	—
Union—W. O. Miller	180.00	50.00	—
Urbana—Marsh Whittington	150.00	358.75	—
Village—J. E. Hargett	60.00	—	—
Wesson—James Luck	20.00	—	—
TOTALS	\$ 13,238.92	\$ 8,352.16	\$ 1,897.01

Church and Pastor	Undesignated Co-operative Program Contributions	Ouachita Campaign Designated Contributions	Other Designated Contributions
LITTLE RED RIVER ASSOCIATION			
Brownsville—W. B. O'Neal	—	—	—
Concord	—	—	—
Edgemont (Fairview)	—	—	—
Heber Springs—Othar Smith	300.00	75.00	—
Lone Star—O. D. Yount	—	—	—
McJester—Thos. Reeves	—	—	—
Mt. Olive—W. B. O'Neal	—	—	—
Mt. Zion (Banner)	15.00	—	—
Palestine	—	—	—
Pleasant Hill (Floral)—Delbert Garrett	24.00	25.00	—
Pleasant Ridge—David King	12.00	—	—
Pleasant Valley	—	—	—
Post Oak—W. L. Bunch	6.00	—	—
Quitman—Harold Trevolt	15.00	—	—
Shiloh	—	—	—
Stony Point	—	—	—
Valley Hill—David King	14.00	—	—
TOTALS	\$ 386.00	\$ 100.00	\$ 0.00

Church and Pastor	Undesignated Co-operative Program Contributions	Ouachita Campaign Designated Contributions	Other Designated Contributions
LITTLE RIVER ASSOCIATION			
Ashdown—Lawson Hatfield	362.98	156.10	—
Ben Lomond	4.00	—	—
Bingen, First—Mack Gates	130.00	—	—
Brownstown—James Hampton	—	—	—
Columbus—Floyd Taylor	39.54	—	—
DeQueen, First—Boyd Baker	293.81	107.00	—
Dierks	15.00	—	—
Foreman—C. R. Pierce	15.00	—	—
Hicks—Lawson Hatfield	10.00	—	—
Horatio—Russell Armer	—	—	—
Liberty—Harold Coble	—	—	—
Lockesburg—W. T. Byrum	120.00	45.00	—
Lone Oak—G. O. Taylor	10.00	—	—
Mineral Springs (Central)—James Harris	30.00	—	—
Murfreesboro—R. E. Baucom	120.00	—	—
Mt. Moriah	—	—	—
Nashville, First—W. E. Perry	1,633.90	484.00	—
New Home, Belton—Norvin Jones	18.75	25.00	—
Ogden—Billy Hickem	11.33	—	—
Ozan	—	—	—
Paraloma—Henry Keahey	—	—	—
Rock Hill—A. O. Zachrey	7.10	—	—
Sardis—A. O. Zachrey	—	—	—
State Line	—	—	—
Washington—Floyd Taylor	30.00	—	—
Wilton—Dean Newberry	45.00	—	—
Winthrop	—	—	—
TOTALS	\$ 2,896.42	\$ 817.10	\$ 15.00

Church and Pastor	Undesignated Co-operative Program Contributions	Ouachita Campaign Designated Contributions	Other Designated Contributions
MISSISSIPPI COUNTY ASSOCIATION			
Armored—Homer J. Adkins	45.00	—	—
Blackwater—T. J. Richardson	22.95	—	—
Blytheville, First—E. C. Brown	2,000.06	200.00	—
Blytheville, Calvary—P. H. Jernigan	—	—	—
Boynon	4.00	—	—
Brinkley Chapel—Emmitt Cross	—	—	—
Brown's Chapel—J. M. Wilkinson	37.50	—	—
Clear Lake—H. W. Wooten	48.00	—	—
Cole Ridge—W. C. Steward	13.39	—	—
Cross Roads—W. C. Steward	7.24	—	—
Dell—R. E. Jones	39.00	—	—
Dyess, Central—Jack Auten	43.58	—	—
Emmanuel—A. M. Houston	—	—	—
Etowah—Roy Johnson	—	—	—
Fairview—L. D. Watkins	30.00	—	—
Gosnell—J. L. Pinkston	30.00	—	—
Joiner—S. M. Cooper	170.00	—	—
Kaiser	39.00	—	—
Leachville—Rex Brown	50.00	—	—

(CONTINUED ON PAGE FIFTEEN)

WM. T. STOVER CO.

Trusses

Twoway Stretch Elastic

Hoisery

Sick Room Supplies

Infra Red Lamps

Abdominal Supporters

721-723 MAIN ST. LITTLE ROCK

East Texas Baptist College

SUMMER SCHOOL 1948

June 8 - July 16

July 19 - August 27

Enlarged Curriculum—Strong Faculty

Illustrated bulletin on application.

Waller M. Ethridge,
Vice-President
Marshall, Texas

QUARTERLY REPORT

(CONTINUED FROM PAGE FOURTEEN)

Church and Pastor	Undesignated Co-operative Program Contributions	Ouachita Campaign Designated Contributions	Other Designated Contributions
Luxora, First—A. B. Hill	345.00	186.66	—
Manila—J. L. Ford	165.70	45.05	6.00
Mary's Chapel—M. R. Griffin	—	—	19.39
New Bethel—Curtis Downs	20.00	—	32.12
New Harmony—James Rambo	—	—	—
New Liberty—Russell Duffer	201.98	—	104.52
New Providence—R. F. Liddell	208.00	—	—
Nodena—M. D. Davis	54.40	—	—
Number Nine—Howard King	90.00	—	2.00
Osceola, First—Russell Clubb	1,950.00	400.00	118.45
Pleasant Valley	—	—	—
Rocky	—	—	—
Wardell—Doyle Creech	38.95	—	—
Wells Chapel—O. W. Auton	—	—	—
Whitton—H. M. Robertson	104.23	—	135.30
Wilson—A. F. Muncy	998.87	—	—
Woodland Corner—Arnold Clayton	17.27	—	5.41
TOTALS	\$ 6,774.12	\$ 811.71	\$ 785.56

MT. ZION ASSOCIATION

Bay—Daniel Hughes	—	—	—
Bethabara (Cane Island)—M. E. Willfong	—	—	—
Black Oak	30.00	—	—
Brookland—S. J. Meador	30.00	—	15.00
Buffalo Chapel—E. McCall	—	—	—
Caraway—Robert W. Johnson	18.00	—	17.00
Cash—D. B. Cook	25.00	—	150.00
Deason Lake—A. S. Smith	10.00	—	—
Egypt—Chas. Gray	—	—	—
Friendly Hope	—	—	—
Jonesboro, Central—Reese S. Howard	195.00	—	—
Jonesboro, First—C. Z. Holland	1,650.00	—	393.50
Jonesboro, Fisher St.—Frank Waite	339.54	—	6.00
Jonesboro, Walnut St.—Jas. Fitzgerald	195.00	—	13.17
Lake City—W. E. Speed	—	—	82.66
Lunsford—Jack E. Laffler	28.00	—	—
Monette—G. W. Smith	498.20	—	176.21
Mt. Pisgah—Osborne L. Justice	—	—	—
Mt. Pleasant	—	—	—
Mt. Zion	150.00	—	—
Nettleton—G. W. Boyd	60.00	—	39.30
New Antioch	—	—	—
New Bethel	—	—	—
New Hope, Black Oak	—	—	—
New Hope, Jonesboro	—	—	—
Philadelphia—Basil Goff	24.00	—	15.95
Rowe's Chapel—Carl Bunch	50.00	—	—
TOTALS	\$ 3,302.74	\$ —	\$ 908.79

NEWTON COUNTY ASSOCIATION

Deer	30.00	—	20.00
Jasper	10.00	—	—
Moore	20.00	—	—
Mt. Judea	—	—	—
Nall—Lee Young	—	—	—
Parthenon	30.00	—	39.09
Sandy Gap	—	—	—
Walnut Grove (Boxley)	6.00	—	—
TOTALS	\$ 96.00	\$ —	\$ 59.09

OUACHITA ASSOCIATION

Acorn—Albert Moore	10.00	—	—
Bethel (Potter)	—	—	—
Board Camp	2.50	—	—
Cherry Hill—J. M. Holman	79.65	—	—
Concord—Chas. M. Burgess	—	—	—
Cove—Joe Hall	—	—	—
Eureka	—	—	—
Gillham—C. H. Moore	8.10	—	10.79
Grannis—Curtis Pennington	25.00	—	—
Hatfield—Curtis Pennington	59.09	—	—
Hatton—Mark Roberts	15.00	—	—
New Hope—John Liles	—	—	—
Salem—John Liles	—	—	—
Two Mile	—	—	—
Vandervoort—H. V. Wilson	14.40	—	12.22
Wickes—E. Atterberry	15.00	—	—
Yocana—J. M. Holman	30.00	—	—
TOTALS	\$ 258.74	\$ —	\$ 23.01

PERRY COUNTY ASSOCIATION

Bigelow—Pat Shields	—	—	3.80
Casa—Pat Shields	20.00	—	23.55
Harmony	—	—	—
Houston—D. R. Harrell	—	—	2.00
Morrilton, First—C. D. Sallee	523.86	150.00	—
Perry—Jerry Davis	20.00	—	6.50
Perryville—C. S. Womack	60.00	—	6.00
Pleasant Grove	3.00	—	—
Thornburg—Perry Corder	—	—	—
TOTALS	\$ 626.86	\$ 150.00	\$ 41.85

PULASKI COUNTY ASSOCIATION

Belleve—J. E. Poindexter	—	—	—
Crystal Hill—C. D. Johnson	30.00	—	—
Crystal Valley—C. O. Hitt	—	—	—
Douglasville, First—W. C. Halsell	40.00	—	—
Douglasville, Second—Robert Parr	—	—	—
East End—Harry A. Nettles	43.78	—	—
Friendship—G. W. Smith	25.73	—	17.28
Geyer Springs—E. D. Estes	—	—	3.00
Grace—E. S. Ray	148.88	—	—
Graves Memorial—L. P. Guthrey	40.14	—	17.25
Harmony	—	—	—
Hebron—W. Dawson King	242.04	—	36.79
Holly Springs—L. A. Tribble	26.35	—	—
Ironton—M. E. Faulkner	89.95	—	43.63
Jacksonville—H. W. Ryan	151.25	151.25	—
Levy—O. A. Greenleaf	89.69	—	—
Liberty—Perry Corder	—	—	—

Life Line—Lawrence Kendrick	10.00	—	—
Little Rock, Bapt. Tabernacle—L. H. Roseman	460.96	—	91.93
Little Rock, Calvary—Wilbur Herring	531.43	—	—
Little Rock, First—R. C. Campbell	6,249.99	—	—
Little Rock, Gaines St.—C. E. Lawrence	1,394.03	180.00	—
Little Rock, Immanuel—W. O. Vaught	3,030.00	1,703.60	—
Little Rock, Pulaski Heights—W. H. Hicks	1,804.08	300.00	—
Little Rock, Reynolds Mem.—Guy S. Wilson	152.95	—	—
Little Rock, Second—M. Ray McKay	3,599.04	4,306.67	—
Little Rock, S. Highland—Ray Branscum	333.73	42.72	—
Little Rock, Biddle—Horace Grigson	54.65	—	—
Little Rock, West Side—T. P. Gladden	50.00	—	—
Little Rock, Woodlawn—Joe L. Ingram	37.50	—	—
Martindale—Jack Whitfield	12.00	—	—
Mountain View—W. L. Wadley	—	—	—
Mountain View No. 2—W. D. Kilpatrick	—	—	—
Natural Steps	12.00	—	—
N. Little Rock, Baring Cross—H. A. Elledge	1,554.00	400.50	—
N. Little Rock, Central—Earl Herrington	405.99	—	—
N. Little Rock, First—Owen W. Moran	1,159.48	1.00	—
North Point—E. W. Goodson	—	—	—
N. Little Rock, Pike Avenue—Raymond Strickland	162.54	—	—
N. Little Rock, Park Hill—Taylor Stanfill	193.87	—	—
Oak Forrest—R. W. Bishop	—	—	—
Pilgrim's Rest	25.60	—	—
Pine Grove, Sweet Home—Harold Presley	45.00	—	—
Plainview—G. O. Abbott	145.48	—	—
Pleasant Grove, Ferndale	—	—	—
Roland	—	—	—
Shady Grove—W. T. Craton	—	—	—
Stanfill—Geo. Fox	—	—	—
Sylvan Hills, First—E. S. Ridgeway	30.00	—	—
Trinity—R. E. Weeks	—	—	—
Vimy Ridge	—	—	—
Woodson—Lee Lewis	15.24	—	—
Worrell's Memorial—H. R. Boyd	23.67	—	—
Zion Hill—Jack Hogue	31.00	—	—
Nalls Memorial—E. H. Elmore	—	—	—
TOTALS	\$ 22,441.84	\$ 7,177.67	\$ 1,621.00

RED RIVER ASSOCIATION

Antoine—Harold Coble	6.00	—	—
Arkadelphia, First—J. G. Cothran	2,100.00	75.00	—
Arkadelphia, Second—O. C. Harvey	200.00	—	—
Beech Street, Gurdon—Kenneth Grant	165.00	150.00	—
Beirne—Marvin Gennings	65.37	33.32	—
Bethel—John W. Sehestedt	—	—	—
Bethlehem	—	—	—
Boughton—J. T. Atkinson	13.35	—	—
Caddo Valley—Tommye Roberts	—	—	—
Curtis—D. E. Castleberry	—	—	—
DeGray—Guy Branscum	11.10	25.00	—
Emmett—J. T. Atkinson	—	—	—
Fairview—Graham Fowler	13.50	—	—
Harmony Hill—Raymond Marks	19.16	—	—
Hollywood	—	—	—
Lakeview—Neil Brewer	—	—	—
Mt. Bethel—Calvin Hughes	—	—	—
Mt. Olive	—	—	—
Mt. Zion—Glen Wright	—	—	—
Okolona—Orville McGuire	5.00	—	—
Prescott, First—Fred A. White	499.99	225.00	—
Richwoods—C. H. Seaton	30.00	—	—
Sayre—Ernest Moseley	—	—	—
Shady Grove—Fred Alexander	12.00	—	—
Shiloh—Arthur S. Howard	—	—	—
Social Hill—L. W. Rhodes	—	—	—
South Fork	9.00	—	—
Sycamore Grove	3.00	—	—
Unity—E. C. Patterson	18.00	—	—
Whelan Springs—Frank Van Landingham	—	—	—
TOTALS	\$ 3,170.47	\$ 508.32	\$ 171.00

ROCKY BAYOU ASSOCIATION

Belleview—J. R. Hamilton	—	—	—
Calico Rock—O. C. Hicks	12.00	—	—
Evening Shade—W. E. Davis	—	—	—
Finley Creek—Hugh Cooper	30.00	—	—
Franklin—Hugh Cooper	19.80	—	—
Guion—G. M. Roberts	18.28	—	—
Hickory Flat	—	—	—
Johnsonview	—	—	—
Lone Star—Troy F. Melton	—	—	—
Melbourne—O. C. Hicks	25.00	—	—
Oxford—Hugh Cooper	30.00	—	—
Rocky Bayou, Lunenburg—O. C. Hicks	—	—	—
Saints Rest	—	—	—
Sage—Hugh Cooper	15.00	—	—
Sidney—W. E. Davis	—	—	—
Zion Hill—Hugh Cooper	—	—	—
TOTALS	\$ 150.08	\$ —	\$ 5.00

STONE-VAN BUREN ASSOCIATION

Clinton—Claud Jenkins	48.45	—	—
Corinth (Holly Mountain)—J. W. Hayes	1.00	—	—
Evening Shade	—	—	—
Happy Hollow	—	—	—
Harness—Zack Davis	—	—	—
Leslie	30.00	—	—
Lexington—J. W. Hayes	5.00	—	—
Marshall—W. L. Leach	114.97	200.00	—
Morning Star—Homer Crabtree	—	—	—
Mountain View, First—Gus Poole	45.34	20.00	—
Mt. Zion—Lester Passmore	—	—	—
Pee Dee—J. D. Reeves	—	—	—
Plant	—	—	—
Pleasant Valley	—	—	—
Red Hill (Botkinburg)—J. W. Hayes	6.00	—	—
Shady Grove	—	—	—
Shirley	12.00	—	—
Valley Springs	—	—	—
Zion—W. R. Jefferies	—	40.00	—
Zions Light	—	—	—
TOTALS	\$ 262.76	\$ 260.00	\$ 1.00

TRI-COUNTY ASSOCIATION

Antioch	—	—	—
Barton's Chapel—J. H. Griffin	16.10	—	—
Beck Spur—Glen Giles	12.00	—	—
Cherry Valley—Ralph M. Cadwell	14.20	—	—

(CONTINUED ON PAGE SIXTYEVEN)

QUARTERLY REPORT

(CONTINUED FROM PAGE FIFTEEN)

Church and Pastor	Undesignated Co-operative Program Contributions	Ouachita Campaign Designated Contributions	Other Designated Contributions
Crawfordsville—Ray Y. Langley	90.00	—	—
Earle—Joe B. Sullivan	1,194.92	—	47.63
Fair Oaks—Henry Wright	—	—	—
Fitzgerald Crossing—Earl Hamblin	4.32	—	—
Forrest City—Minor E. Cole	600.00	450.00	210.00
Gladden	—	—	—
Harris Chapel	102.43	—	6.00
Hydrick	—	—	—
Jericho—C. C. Anderson	—	—	—
Madison	10.00	—	—
Marion—N. E. Lerch	118.43	—	37.50
May's Chapel—W. M. Thompson	—	—	—
Mt. Pisgah	—	—	—
Palestine—Glen Giles	5.00	—	—
Parkin—Setbert Haley	100.00	—	—
Riverside—W. M. Thompson	—	—	—
Shell Lake	4.00	—	—
Vannale—Leonard Dove	—	—	—
West Memphis—Aubrey C. Halsell	975.00	—	32.50
Wheatley	75.00	—	—
Wynne, First—W. R. Woodell	877.51	—	—
TOTALS	\$ 4,199.91	\$ 450.00	\$ 333.63

TRINITY ASSOCIATION

Bethel—H. E. Leigh	10.00	—	—
Corners' Chapel—J. M. Wilkinson	15.00	—	—
Fisher—Coy Sims	30.00	—	—
Freer	—	—	—
Greenfield—Osborne L. Justice	9.00	—	32.40
Harrisburg—John Collier	90.00	—	7.97
Hurd's Chapel—R. E. Cole	4.00	—	—
Lebanon—W. A. Applegate	20.00	—	—
Lepanto—Leslie Riherd	125.00	—	122.42
Marked Tree—W. F. Carlton	214.43	—	6.00
Nelswander—J. O. Gunthorpe	—	—	—
Pleasant Grove—L. C. Edwards	18.00	—	—
Pleasant Hill—L. C. Edwards	15.00	—	—
Pleasant Valley—J. H. Garrett	2.50	—	—
Red Oak—L. M. Riherd	24.89	—	11.00
Ridgeview	—	—	—
Shiloh—Clarence Edmonson	—	—	—
South McCormick—Homer Cantrell	15.00	—	—
Trumann	30.00	—	3.00
Tyrone—Boyd Eldridge	289.92	200.00	6.00
Valley View	—	—	—
Waldenburg—R. E. Leigh	—	—	—
Welner—C. F. Barnett	87.21	—	3.00
Weona Junction	—	—	—
West Ridge—R. D. McEwen	—	—	—
Miscellaneous	—	—	6.00
TOTALS	\$ 1,008.95	\$ 200.00	\$ 197.79

WASHINGTON-MADISON ASSOCIATION

Brush Creek—Elisha Holland	—	—	—
Black Oak—J. E. Reed	—	—	—
Fayetteville, First—Walter Johnson	1,800.00	185.00	86.78
Fayetteville, Second—Norman Drake	—	—	—
Friendship—Raymond Duffell	9.37	—	—
Hazel Valley	—	—	—
Hindsville—Oakley Long	17.50	—	—
Huntsville—R. W. Jones	30.00	—	—
Johnson—Ewel Logue	15.00	—	—
Lincoln—A. J. Scott	49.24	—	3.85
New Hope—S. D. Etris	—	—	—
Prairie Grove—John B. Stephen	9.00	—	—
Sonora	—	—	—
Springdale, First—C. E. Wilbanks	499.98	—	12.90
Spring Valley—Oakley Long	15.00	—	—
Sulphur City	10.00	—	—
West Fork—Al Felts	15.00	—	—
Winslow—T. J. Redford	17.62	—	—
Liberty	22.51	—	—
TOTALS	\$ 2,510.22	\$ 185.00	\$ 103.53

WHITE COUNTY ASSOCIATION

Beebe—William Burnett	75.00	—	—
Bethany (Georgetown)—Wade E. Ellis	—	—	—
Central, Bald Knob—C. S. Maynard	40.00	—	—
Crosby, Armstrong Springs—H. M. Dugger	21.00	—	—
El Paso—Ernest Anderson	22.50	100.00	—
Griffithville—B. C. Guiler	—	—	13.00
Harris Chapel—Ople Sample	—	—	—
Higginson—E. J. Evans	10.00	—	—
Judsonia, First—L. M. Keeling	200.00	—	5.00
Kensett—L. C. Langley	96.92	—	—
Liberty (Walker)—Gus Prince	10.00	—	—
McRae—Gus Prince	—	—	—
Morrow—Alfred Pate	9.00	—	—
Mt. Hebron—Otis Reedy	15.00	—	—
Mt. Sidon—H. M. Dugger	—	—	—
New Bethel—Alfred Pate	—	—	—
Pleasant Valley—O. B. Smythe	12.00	—	—
Rescue—Sidney W. Holcomb	7.50	—	25.00
Rocky Point—O. B. Smythe	12.00	—	12.46
Rosebud—Gus Prince	6.00	—	—
Royal Hill—Ernest Anderson	25.00	—	—
Searcy, First—W. R. Vestal	507.00	260.00	8.00
Smyrna—T. W. Hayes	15.00	—	10.00
Union Valley	4.00	—	—
West Point—L. B. Edwards	11.00	—	—
TOTALS	\$ 1,098.92	\$ 360.00	\$ 73.46

WHITE RIVER ASSOCIATION

Antloch (Flippin)	—	—
Blooming Grove	—	—
Cotter—Dennison Yates	6.00	—
Flat Rock—J. F. Duncan	—	—
Gassville—Talburn	15.00	—
Hopewell (Colfax)—Geo. W. Johnson	—	25.00
Lone Rock	—	—
Mountain Home—D. W. Stark	150.00	—
New Hope	—	—
Norfolk—Dennison Yates	5.00	—
Oak Grove	—	—
Oakland	—	—
Pea Ridge	—	—
Pilgrim's Rest—D. W. Stark	14.78	—
Pleasant Hill, Bruno	20.00	—
Rehobeth, Flippin—D. M. Kreis	18.75	—
Whiteville—Geo. W. Johnson	9.00	50.00
Yellville	55.00	—
TOTALS	\$ 283.53	\$ 75.00

WOODRUFF COUNTY ASSOCIATION

Augusta—Dell Hames	300.00	170.00
Cotton Plant—Rivos H. Dorris	158.21	—
Good Hope—C. S. Ramseyer	10.95	—
Gregory	23.42	—
Hunter—L. Y. Lewis	50.30	—
McCrary—Chester Parker	85.00	—
Pleasant Grove (Howell Wiville)—J. M. Hitt	60.00	—
Raynor's Grove—C. P. Watkins	5.00	—
Riverside—C. H. Garner	—	—
Tupelo—James Phelps	8.20	—
TOTALS	\$ 701.88	\$ 170.00

UNASSOCIATED

Keo	—	—
Miscellaneous	—	135.00
GRAND TOTALS	\$122,932.45	\$40,255.42

* During the fourth quarter of 1947 we received \$400.00 from Chidester Church Liberty Association, for Co-operative Program of which \$100.00 was to be applied to 1947 Co-operative Program. The remaining \$300.00 was applied to 1948 operative Program and is listed on this first quarter report, 1948.

Meeting the Challenge

In Young People's Work

By MISS LAVERNE ASHBY

Young people's work in Arkansas has made definite advancement in 1947 with an increase in the total number of auxiliaries. Y. W. A.'s and R. A.'s made slight gains with Girls' Auxiliaries and Sunbeam Bands having greater net increases. There are 1,129 young people's organizations in Arkansas with a total membership of 9,711. There were 123 new organizations this past year. We rejoice that 57 of these organizations achieved the Standard of Excellence during the year. This is 15 more organizations than were standard in 1946.

More than 500 mission study classes for young people were held in 1947, and more than half of the organizations reported having community missions during the year. There were 421 new tithers enlisted during 1947.

The joyous privilege of seeing the young people's counselors and directors all over the state leading our fascinating, consecrated, talented young people into earnest effort for missions is one that I glory in day and night as I travel over our state. The zeal for missions is easily kindled in their hearts by missionary minded men and women. May we daily seek additional recruits for this finest of service for our Lord, leading young people closer to Him. It is our challenging opportunity to lead these young people into real desire "Ambassadors to be".

First Church, Batesville On Campaign Honor Roll

THE FIRST CHURCH, BATESVILLE, BECOMES NUMBER THIRTEEN IN PAYING THE FULL QUOTA TO THE OUACHITA CAMPAIGN.

Dr. E. P. J. Garrett led First Church, Batesville, in accepting and paying the full quota and led two of his members, Dr. and Mrs. Flis Wyatt to make a special gift, a \$1,000 bond, to the campaign.

Dr. Garrett assures us that though his church has paid the full quota, they will continue to contribute monthly to the Ouachita Campaign. This is the spirit that will help us to gain victory and make Ouachita school that it should be.

—H. A. Elledge

—000—

The Nigerian Baptist Seminary at Ogbomoso, Nigeria, West Africa, was recently affiliated with the Southern Baptist Seminary at Louisville, giving the Nigerian seminary power to grant degrees. Dr. Cornell Goerner of the Louisville Seminary investigated the facilities, the faculty, course of study, and type of students at the Nigerian seminary last summer and reported his findings to the faculty and trustees of the Southern Baptist Seminary who have approved the affiliation.