

7-27-1961

July 27, 1961

Arkansas Baptist State Convention

Follow this and additional works at: <https://scholarlycommons.obu.edu/arbaptnews>



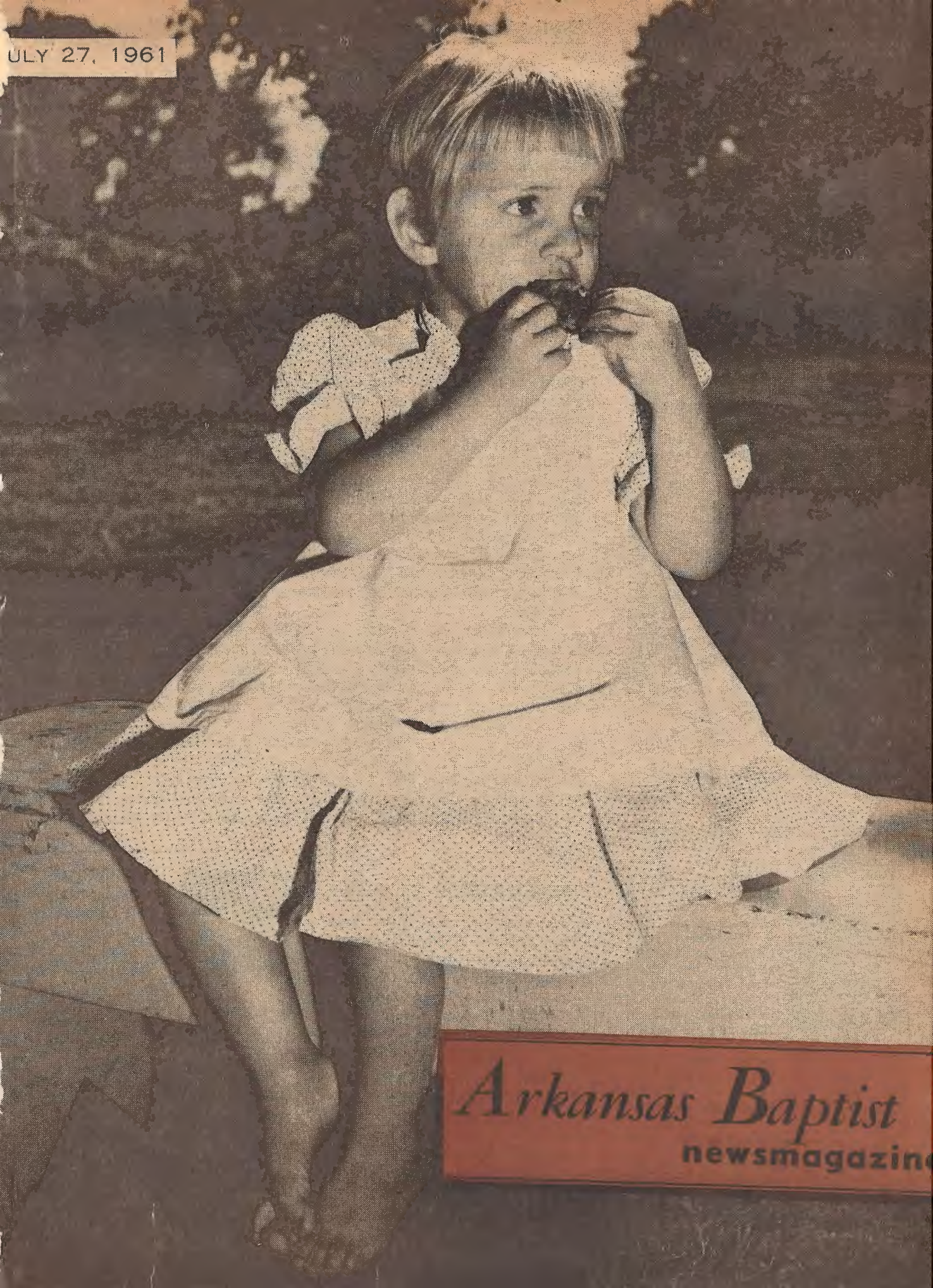
Part of the [Christianity Commons](#), and the [Mass Communication Commons](#)

Recommended Citation

Arkansas Baptist State Convention, "July 27, 1961" (1961). *Arkansas Baptist Newsmagazine*. 92.
<https://scholarlycommons.obu.edu/arbaptnews/92>

This Book is brought to you for free and open access by the Arkansas Baptist History at Scholarly Commons @ Ouachita. It has been accepted for inclusion in Arkansas Baptist Newsmagazine by an authorized administrator of Scholarly Commons @ Ouachita. For more information, please contact mortensona@obu.edu.

JULY 27, 1961



Arkansas Baptist
newsmagazine

Program survey

DR. ANDREW M. Hall, pastor, First Baptist Church, Fayetteville, Arkansas, wrote me the other day concerning a recent survey made by their church on Cooperative Program giving. Perhaps it will be of interest to many throughout our state. It is as follows:



DR. WHITLOW

Recently the Finance Committee of First Baptist Church, Fayetteville, conducted a survey by mail of Cooperative Program giving. The churches quizzed were the top twenty in Arkansas according to receipts for the Cooperative Program last year.

The question was asked, "What per cent of your total budget goes to the Cooperative Program?" The average was 17 per cent with 22.5 being high and 12 being low.

The question was also phrased, "What per cent of your budget (excluding debt service) goes to the Cooperative Program?" The average was 23.2, with 30 being the highest and the low being 18.9.

In addition to the above, Immanuel Baptist Church, Little Rock, was kind enough to mail us a similar survey done among many of the largest churches of the Southern Baptist Convention. The average in this case was 18, with the high being 39 and the low 6. — S. A. Whitlow, Executive Secretary

Stewardship materials

"THIS program is designed for the big church!"

We have heard that statement many times in the past three years.

In stewardship clinics and conferences a few have asked, "Why don't you give us something that will help our church?" meaning, the Forward Program of Church Finance is for the large church, with large staffs, etc.



DR. DOUGLAS

We are getting ready to send Beginner Programs to some of our churches. This phase of the Forward Program takes steps to help churches that have never done much in the matter of church finance. For instance, some churches never plan a budget. There is a simplified calendar, copy of news letter, outline of work, along with other materials in the package. These materials are planned so that any church can use them successfully.

The Convention Program

WE would support a move to change the program (order of business) of the annual meeting of the Southern Baptist Convention in the interest of efficiency and the saving of time. This is not a new or original suggestion, but we believe that it deserves study. It has been evident for some time that the tendency has been toward long, crowded sessions which extend over several days. This arrangement makes it very difficult to keep up attendance, and it is very tiresome for those who do attend.

We make some suggestions for consideration.

1. The Pastors' Conference and other pre-convention meetings, of which the number and length seem to grow, could be shortened so as to avoid tired messengers when the Convention opens.

2. The Convention sessions could begin on Tuesday morning and close at noon or in the evening of Thursday. This would mean that some of the sermons and addresses would be left off or abbreviated and that perhaps less music would be included.

3. Perhaps some other ways to shorten the procedures could be found. In support of the general idea of a more "stream-lined" program and the above-mentioned suggestions, let us be reminded that we are living in a time when people are not much inclined toward staying through long sessions and extended discussions. Also, the expanding size of the Convention makes it necessary for many to travel long distances in order to attend the meetings. At the same time, most pastors feel that they must attend a convention between Sundays, if at all, and thus avoid being away from their churches on Sunday.

To suggest shorter meetings for some of the other organizations is not to minimize the importance of these organizations. Good preaching and good music are to be appreciated always, but a convention meeting is held primarily for business, and the inspirational features might actually be improved by some abbreviation.

This article is written in full realization that the Committee on Order of Business is a competent committee and that it has a difficult task. We would not want to add to its difficulties; but we believe, as one who not only goes to conventions but who sits through most of the sessions, that the programs could be improved by some abridgment.—S. H. Jones, in an editorial in *Baptist Courier* (S. C.)

STEWARDSHIP TRACTS

In spot checking, we find that many churches are not displaying stewardship tracts in the church building. Perhaps this is because some think that the tracts are too expensive to use. Well, let me remind everyone again, we will send (free) all the stewardship tracts that a church will use effectively.

Evangelists use evangelism tracts and many lost people have been convicted of sin and repented, and were saved by reading a tract.

So many church people are not good stewards and they need help. A tract may be just the thing. Has your church tried it? — Ralph Douglas, Associate Secretary.



"ARKANSAS"
LARGEST
RELIGIOUS
WEEKLY

401 WEST CAPITOL
LITTLE ROCK, ARKANSAS

Official Publication of the
Arkansas Baptist State Convention

ERWIN L. McDONALD, Litt.D. Editor
MRS. E. F. STOKES Associate Editor
MRS. HARRY GIBERSON Secretary to Editor
MRS. GARY LaRUE Mail Clerk

Published weekly except on July 4 and December 25.
Second-class postage paid at Little Rock, Arkansas.
Individual subscriptions, \$2.25 per year. Church Budget, 14 cents per month or \$1.68 per year per church family. Club plan (10 or more paid annually in advance) \$1.75 per year. Subscriptions to foreign address, \$3.75 per year. Advertising rates on request.
The cost of cuts cannot be borne by the paper except those it has made for its individual use.

Articles carrying the author's by-line do not necessarily reflect the editorial policy of the paper.

Abbreviations used in crediting news items:
BP Baptist Press; CB church bulletin; DP Daily press; EP Evangelical Press.

July 27, 1961

Volume 60, Number 29



Home Board Photo

SUMMERTIME — *the time for assembling ourselves together.* Eccles: 3:1 *"To everything there is a season and a time to every purpose under heaven."*

**Cooperative Program
1961 receipts higher**

DURING June, Cooperative Program receipts for the Southern Baptist Convention in 1961 went over the corresponding six month income for 1960.

Treasurer Porter Routh announced January-June receipts totaled \$8,646,367 compared with \$8,499,488 for the same months one year ago. This is a rise of 1.73 per cent. Prior to the end of June, 1961, income had been less than 1960 for the corresponding period.

Designated income for the first six months of 1961 ran 8.06 per cent over 1960 for a like period. The amounts were \$11,250,163 as compared with \$10,410,727.

Cooperative Program receipts for June alone totaled \$1,469,221 against \$1,309,304 for June, 1960. Designations for June, 1961, reached \$557,228 compared with \$546,485 for the same month the year before. (BP)

Fort Smith stirred by revival

"AND there was great joy in that city" (Acts 8:8).

This account of a revival in ancient Samaria under the preaching of Philip describes the general feeling of Fort Smithians about the two-week, open-air revival which closed Sunday night. More than 8,000 attended the closing service, filling Harper stadium to near capacity.

As a visitor, I was interested in hearing, from the evangelist, Dr. C. E. Autrey, and Crusade Director Paul McCray:

"The greatest thing about this crusade is the new spirit of fellowship among the Christians of Greater Fort Smith, among the preachers and among the pastors and their people."

One of the most striking stories I heard was that of two neighbors in Greenwood who had not been on speaking terms for 30 years, although they live in the same neighborhood.

One of the men, a professing Christian, who had been attending the Fort Smith revival, became convicted of his own sins and went to his neighbor to ask his forgiveness. The two knelt in the neighbor's yard to pray and before the visit ended they were good friends and the neighbor, who had never claimed to be a Christian, had accepted Christ.

Although it was the general feeling of those with whom I talked that the revival has made a much greater impact than the statistics would indicate, the statistics themselves are rather significant. Incomplete returns through Sunday night showed 158 additions to Baptist churches, 85 public professions of faith in revival services, 42 volunteering for special Christian service, 147 rededications and 319 to do personal soulwinning.

In addition to the Baptist churches of the area, all of which participated in the revival, many Fort Smith churches of other denominations dismissed their Sunday night services to attend the stadium meeting.

Arkansas grads at Southwestern Seminary



MR. JOHNSON



MR. MCKINNON



MR. PERKINS



MR. SUMMERS



MISS PIERCE

FIVE Arkansans were among the graduates of Southwestern Seminary, Ft. Worth, Tex., July 21.

Receiving the B.D. degree were Bobby Johnson, Rogers; Jack W. McKinnon, Ft. Worth, Tex. and Ray Perkins, Texarkana. Candidates for the M.R.E. degree were Miss Mary Ann Pierce, Clarksville, and E. Leroy Summers, Paragould.

Balloting in the convention

FOLLOWING the meeting at St. Louis a timely editorial in the *Arkansas Baptist* called attention to the careless procedure employed by the Southern Baptist Convention in balloting for its officers. Editor E. L. McDonald explained that he was commenting upon present unsatisfactory methods without implying improper action on the part of messengers or officers of the body. Concern about the matter arose after his failure to secure information when he inquired about the report of tellers. At times in the past the Convention made feeble attempts to use a uniform ballot by requesting messengers to use blank pages placed in the Book of Reports for that purpose. Today the Convention neither issues an official ballot nor requires the chairman of tellers to make a numerical report of results. Editor McDonald offered proper criticism of these two faults and made reasonable suggestions to correct them.

Subsequently letters appeared in the *Arkansas Baptist* from Secretary J. W. Burton and Treasurer Porter Routh. Secretary Burton explained (1) that apparently the Convention has followed the present practice since 1845 and (2) that messengers to the Convention are Christians; therefore the body should hold to the present policy rather than adopt the pattern of a political organization. Treasurer Routh stated that some thought had already been given to the use of an official ballot for elections. The Convention would do well to consider both of

the proposals by Editor McDonald who thinks that the Convention should instruct the registrar to hand a single official ballot to each messenger at the time of registration and require the chief teller to make a numerical report after each election.

Comments by Secretary Burton are both unconvincing and naive. We find them unconvincing because the Convention has become an enormous mass meeting that is keenly sensitive to opinions that prevail in the area adjacent to the host city. The Convention should take care to safeguard the rights of the relatively small number of messengers who come from Baptist strongholds remotely situated from the place of meeting. With few exceptions states where Southern Baptists are most numerous lack cities with facilities to entertain the Convention. Since the organization has grown larger and more complex, the president and other officers exercise more authority and wield more influence so that the choice of officers is extremely important. We find the comments by Secretary Burton naive because they fail to take into consideration the fact that the Convention, while not a political organization, has political overtones. Anyone who watches the denomination closely will be aware of this condition and its effects not only upon operations while the Convention is in session but also upon maneuverings by committee members in the states during the year.

We have hope that the Convention will give attention to the suggestions by Editor McDonald and to other suggestions that would bring about more democratic proceedings in accord with Baptist professions.—Editor Reuben E. Alley, *The Religious Herald* (Va.)

Personally speaking

'Keep it simple,' he said

MY friend Gainer E. Bryan, Jr., editor of *The Maryland Baptist*, gives the following terse report on the Southern Baptist Editors' Workshop held recently at the University of Rochester, Rochester, N. Y., which I attended:

I HAVE just been back to school.

It was a one-week school for writers and editors.

Thirty-four writers and editors were there.

They were all Southern Baptist.

"Keep it simple," the teacher said.

"Use short words, short sentences and short paragraphs," he said.

"Most people don't like to read.

"Especially editorials."

That ought to give Gainer an A-plus.

* * *

What shall it profit an editor if he come forth with the most learned of editorials and nobody read him?

* * *

"Carry a pencil and a notebook to jot down your big ideas when you are inspired," said one of the professors. "Even during a concert or a sermon," he said. "Or at 3:30 a.m., under the glow of the bed lamp on your own twin bed. The muses work at odd and unpredictable hours."

* * *

All of which is to try to get across that the course of writers and editors, as the course of true love, never runs smooth. But for those of us who came up in cotton and corn patches, anything else, even writing, seems easy.

Edwin L. McDonald

Baptist elections

SINCE the appearance of your recent editorial regarding the election procedures at the Southern Baptist Convention, I have had letters from several questioning the intent of that editorial and stating basically that this editorial seems to question the integrity of the Tellers' Committee and possibly the legality of the election of Dr. Hobbs. Having talked with you by telephone and having read the editorial carefully, I have not felt that to be your intent, but I can certainly understand why such conclusions were reached by others.

I particularly feel that your statement regarding the fact that Dr. Harold Hicks, who "helped to count the ballots but never received the final information as to what the totals were" would leave an impression in the minds of your readers that someone tried to keep these results a secret. Apparently, Dr. Hicks, like most of the other members of the committee, realized that the vote was so decisive that not only did he apparently leave before the votes were totalled, but he did not bother to inquire about these totals at any future meetings of our committee when we were counting votes for other offices. Furthermore, I must say that not one officer of the Convention nor one messenger ever inquired as to the vote count and only those members of the Tellers' Committee who stood around while the votes were added ever knew the final results.

We have no stronger man in my opinion than Dr. W. O. Vaught. Without a doubt his service as president of the Pastors' Conference produced the strongest program that conference has ever enjoyed. You can well know that he received a good vote, but the results were very decisive that the Convention chose Dr. Hobbs as its president this time.

As I stated to you on the telephone, the instructions given to me as chairman of the Committee were that it was only necessary for us to certify that a man received the majority of votes cast. This we did in every instance and just prior to my leaving St. Louis, I threw the tabulating sheets into the wastebasket of my room. It would have been an easy matter for you to have learned from me during the Convention these results had you so desired, but because of the several races involved, I did not feel that I could trust my own memory regarding the final results in any particular race. I expect in time to verify my general recollection on these votes, which is that Dr. Hobbs had a majority of more than 2,000 votes. However, at this time this is purely my own recollection and is in no wise intended to be official.

I agree with you that perhaps some of the election procedures might be im-

proved upon, but I question the implications of your editorial and the wisdom of such without some positive solution being offered. I am finding in the correspondence I have received the feeling that the editorial will also prove quite embarrassing to Dr. Vaught, as well as to the others referred to in that writing.—William K. Weaver, Sr., President, Mobile (Ala.) College, Chairman of Tellers at S.B.C., St. Louis

Editor's Note: A guest editorial related to the conduct of Convention balloting appears on page 4 of this issue.

Paper in budget

I AM writing in interest of our work at the Emmanuel Baptist Mission, a mission of the Piggott First Church.

I began my ministry as the pastor of the mission the second Sunday of March of this year. In April, First Church adopted a resolution to put us on our own to carry on as a church for a trial period of a year or less. We adopted a budget of \$70 a week and voted to give 10% of all budgetary gifts to the Cooperative Program. We have more than met our budget. We have had 13 additions, four by baptism and nine by letter. Our plans are to organize a Baptist church in the near future. The Lord has richly blessed us. We have in our budget the Arkansas Baptist for every family. I am enclosing a mailing list for our mission.—Ledell Bailey, Paragould

New Hope pastor resigns

I RESIGNED as pastor of the New Hope Baptist Church, Jonesboro, July 5. I had served the church for one year.

During the 12 months I was pastor of the church, the Sunday School average attendance increased by 65 percent, there was more than a 30 percent increase in total gifts to the budget, and there were a total of 36 additions to the church. Also, we constructed 75 by 29 foot haydite block-brick veneer educational building (10 classrooms, two rest-

rooms, a pastor's study, and a secretary's room), put a hardwood floor in the old auditorium, re-decorated the auditorium furniture, and purchased new Baptist Hymnals.

My plans are indefinite at the present, but I plan to do supply work until the Lord leads otherwise. I can be reached at my home.

Thank you for your continuing service to the Baptists of our state.—Max L. Taylor, 102 Henry, Jonesboro

'Baptist' to Africa

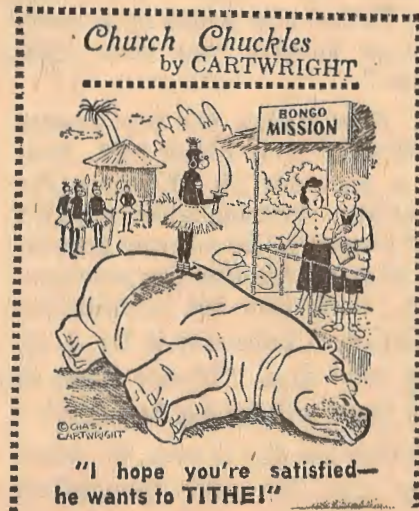
THANK you so much for sending us the Arkansas Baptist. We have especially enjoyed the articles on Scotland since we have many Scottish people here in Nyeri, Kenya. Most of the churches around Nyeri are Church of Scotland or Catholic. Our children attend the Anglican-Presbyterian Children's Church which is the only European Protestant Church. We feel that they need to have something in English as all of our work is in the villages with the Kikuyu people. We attend the Anglican-Presbyterian Bible Study on Tuesday evenings. Although we cannot always agree on the doctrine we do enjoy the Christian fellowship.—W. R. Hull, Baptist Mission, Box 304, Nyeri, Kenya, East Africa

Church and worldliness

I THINK we as Baptists need to sit down and make an evaluation concerning the trend we are traveling. Fifteen years ago the Baptist church stood against dancing, smoking, drinking, women wearing shorts, business being open on Sunday, Sunday movies, card playing, and divorce. It's a historical fact that when a denomination becomes rich and reaches the upper class, its theology begins to rationalize and become liberal. We as local churches have not taken a stand on sex, and the morality of the United States is near its lowest.

... we need to wake up and begin preaching on sin and calling sin by its name. We as a denomination have shut our eyes to the surrounding evil and have failed to stand for Christ. It was not uncommon 25 years ago to excommunicate church members who went against the doctrine and teaching of the word of God, however, today we try for large church rolls full of church members and not real born-again Christians. . . .

The parents in our churches have no concern for their children. The parents leave the children at home, while they go to night clubs, speak-easies, dark taverns with emphasis on sex. This leads to young delinquents, who care nothing for God. This finally leads to an unstable church with unstable Christians. I believe we need to tighten our theology and return to God who should be our leader. — Dick Goodrum, First Baptist Church, Cove.



COURTSHIP MARRIAGE and the HOME

By MRS. J. H. STREET

Have you the capacity for happiness?

HOW'S YOUR disposition today?

Did you know a wide survey shows that the quality most desired in a wife, by a majority of men, is *the capacity for happiness*? That surely rules out self-pity. Since this is just *our* page, let's face it: we women are easily susceptible to that deadly malady.

Let's be pioneers and form a new society for the prevention of self-pity. We must register this sorority that's a-bornin' under a worthy, appropriate name. We need a term to designate our career as home-makers—something that will rightfully place us on a par with other career women—"A new word," wrote Pauline Trueblood, "said with the respect which we employ in reference to physician, minister, or statesman."

Mrs. Trueblood believed so firmly in the need for it that, in cooperation with a professor of Greek, she coined such a word: *agathelion*. It's an adaptation of a Greek word that approximates in meaning the old term, *good wife*, but in form is comparable to that used to denote members of learned professions.

Now, let's consider some of the secrets of those who have learned "in whatsoever state" they are are "therewith to be content." Please react to these, and send in other suggestions. Together, we should come up with something worthwhile.

1. Start the day with a prayer time. Even if you have to get up a few minutes ahead of your family in order to have your private devotional first.

Pray about the problem with your teenager. (Pray about the problem with your parents, Teen-ager!) About the bit of resentment you feel toward your husband over some neglect, unfairness, failure. (Be sure you wait until *after you have prayed* to "tell him off.") About a hurt you feel over the un-

kind remark your neighbor made. The bit of envy beginning to crystallize because your neighbor has a new washing machine and your old one is "acting up." About your financial problems.

P-r-a-y. Pour out your heart to the Heavenly Father. Don't use artificial phrases. Just tell Him exactly how you feel. Then ask Him to guide you to do and say the right things about every situation.

Accept at face value Mark 11:24, "Therefore I say unto you, What things soever ye desire, when ye pray, *believe* that ye receive them and ye shall have them." Of course, we must accept verse 25, too: "And when ye stand praying, *forgive*, if ye have ought against any: that your Father also which is in heaven may forgive you your trespasses."

2. Now, follow the post-prayer impulses of your better self. Deal out a generous bit of praise for something commendable about your teenager. Be warmly expressive of your affection for your husband. Cook him hot biscuits for breakfast. I believe it is Dr. J. D. Grey who says, "Where there is love, there will be hot biscuits."

Before the day is over, do something nice for your thoughtless

'Looks men like'

WE BEGAN today's column with a reference to a survey on qualities men prefer. Just for fun, let's consider another survey. This one was made some years ago and reported by a popular magazine, under the title, "Looks That Men Like." Ninety-eight men, averaging around 20 years old, registered their preferences in women's clothes as follows:

Filly feminine	4
Soft, gracious and simple ..	37
Casual-feminine	35
Smart, "sophisticated"	13
Tailored and neat	9
Severely tailored without trim	0

These university men volunteered other ideas about women's dress, such as:

In their grooming girls should strive to enhance their best features, which are usually their most feminine. Every woman has at least one appealing feature, and she should build to this point of attractiveness. Nor should she think only of her appearance to the neglect of her personality. The average man does not like his girl to go to extremes, nor to be conspicuous. *Men prefer girls who glow to those who glitter.*

neighbor, Tell her something complimentary you heard about her, or something you honestly admire about her.

3. Exercise voluntary effort to think pleasant thoughts. Cultivate the tendency to look for admirable traits in people, including your family. Make a habit of saying things to people that you know will please them and make them happy. Consciously refrain from remarks, even jokingly, that will put other people at disadvantage or make them momentarily uncomfortable.

4. Remember always that happiness is a by-product. "The only way to get happiness is to forget it."

Stay happy!

Rosalind Street

[Mail should be addressed to Mrs. Street at 1818 Bruce, Conway, Ark.]

Arkansas All Over— Centennial observed at Lake Village

LAKE VILLAGE Church observed its 100th anniversary July 16.

The church was organized in 1861 with a charter membership of 22, 16 of whom were women.

The Civil War had already broken out and many of the men of the community had already enlisted for military service. The first pastor, Rev. William Green, resigned soon after his call, to enter the army.

The first pastor of the church actually to serve was George Boardman Eager, a native of Rodney, Miss., who had served, at the age of 16, as a courier in the Confederate Army and who was serving as sergeant major in Griffith's Brigade when the Civil War ended.

Mr. Eager, later to become one of the outstanding leaders of the Southern Baptist Convention as a pastor and, from 1900 to 1920, as professor of biblical introduction and pastoral duties, in Southern Seminary, Louisville, Ky., was pastor at Lake Village in 1871 and 1872.

Mr. Eager served as editor of *Review and Expositor*, a Southern Seminary scholarly magazine, and wrote for publications of the Baptist Sunday School Board.

CENTENNIAL HIGHLIGHTS: Column right, top: J. M. Buffington, chairman of the Centennial Committee of Lake Village Church, pins a posey on youthful Pastor Merle A. Johnson, Jr.

Center, Mrs. John Simms, who has been a member of the church for 65 years, signs the Centennial Register.

Bottom, four of the former pastors who were on hand for the Centennial celebration: E. S. Campbell, Jackson, Miss.; Boyd Baker, Booneville; H. O. Malone, Ft. Worth, Tex.; C. R. Pierce, Jr., Asheville, N. C.

All but one of the former pastors still living were participants in the Centennial celebration. Present were C. C. Wood, Monticello, pastor 1913-1922; E. S. Campbell, now of Jackson, Miss., who was pastor 1928-32, during which time the present church building was erected; Boyd Baker, Booneville, 1935-44; J. T. Elliff, Kansas City, Mo., 1945-47; H. O. Malone, Ft. Worth, Tex., 1947-50; and C. R. Pierce, Jr., Asheville, N. C., 1951-1959.

The Lake Village Church came into existence during one of the darkest periods of America's history—a time of "bitterness, bloodshed and heart-break"—former Pastor Boyd Baker said, in his sermon at the morning service. "But in the midst of this, a small group here turned to spiritual things, holding on to God."



Arkansas Baptist Newsmagazine Photo



New Foundation secretary on job

'ON LOCATION' for the ARKANSAS BAPTIST NEWSMAGAZINE cameraman the other night at their new home, 502 West L, North Little Rock, were the Ed F. McDonalds, with their daughter, Martha Ruth. Mr. McDonald began his duties July 1 as secretary of the Arkansas Baptist Foundation.

THE Arkansas Baptist State Convention staff, in the Baptist Building, 401 West Capitol, Little Rock, has "moved over" to make room for a new department head, Rev. Ed F. McDonald, Jr., the new executive secretary of the Arkansas Baptist Foundation.

Admitting that he has "much to learn" in the field of enlisting financial support for all the agencies and institutions of the Arkansas Baptist State Convention, Secretary McDonald told an *Arkansas Baptist Newsmagazine* reporter that he plans to make a field trip soon to Oklahoma. There he will study the Baptist Foundation of that state, which has succeeded in building up funds in the millions.

"My big task will be to sell the people and the pastors of Arkansas on the importance of the Baptist Foundation program," he said, in an interview in his office on the second floor of Baptist Building.

"Why did you decide to leave the pastorate for this position?" the reporter asked.

"The challenge of the Foundation work, plus the fact that I was educated for the law and was a practicing attorney four years before entering the ministry, I suppose," he replied. "I can now see God's purpose in my career as first a lawyer and then for many years a minister and pastor."

But the decision was not easy. To accept the new post he had to

give up what he regards as one of the finest pastorates in the state—First Church, Newport—plus resigning as a member of the Executive Board of the Arkansas Baptist State Convention.

He continues to serve as second vice president of the Arkansas Baptist State Convention.

Mrs. McDonald, the former Wanda Milhoan, of Hartford, a University of Arkansas graduate, and the third member of the McDonald household, Martha Ruth, who will be an eighth grader this year, also had to be willing to make sacrifices in the new move.

On their first Sunday in North Little Rock the McDonalds moved their church membership to Park Hill Church, where they are fast making new friends. Mr. McDonald was the speaker at prayer-meeting of the church on a recent Wednesday night.

Martha Ruth is getting acquainted with a number of the boys and girls who will be her classmates at Ridge Road Junior High School, within walking distance of her new home, beginning in September.

Howard to Arkansas City



MR. HOWARD

REV. Reese Howard, for the past eight years pastor of First Church, Beebe, resigned June 30. He will become pastor of Arkansas City Church Aug. 1.

Missionary Notes

REV. AND Mrs. Harrison H. Pike, Southern Baptist missionaries to South Brazil, have sailed for the States for furlough following their first term of overseas service. The Pikes may be addressed at 1914 Olive St., Texarkana, Tex. He is a native of Texarkana; she is the former June Summers, of Fort Smith.

REV. AND Mrs. Donald L. Orr, Southern Baptist missionaries who have been on furlough in the States, have returned to Cali, Colombia, where they teach in the International Baptist Theological Seminary. Their address is Apartado Aereo 1320, Cali, Colombia. He is a native of Hot Springs; she is the former Violet Rogers, of Verden, Okla.

Joy Vee Davis

awarded scholarship

JOY VEE DAVIS, daughter of State Training Union Director and Mrs. Ralph W. Davis, has received a scholarship to Baylor University, where she will enter as a freshman in September.



MISS DAVIS

Joy Vee made a high percentile on the American College Test and was a finalist in the National Merit Scholarship competition. She was rated number one scholastically in the 1961 graduating class of Hall High School, Little Rock, having been the only student to make straight "A" grades for the two years at Hall. She was an honor graduate and a member of the National Honor Society.

She attended the tenth grade in Memphis, where she was an honor student at the annual Honors' Day Program. She is an organ student of John Summers and is planning to give an organ recital on Aug. 29.



Celebrate wedding anniversary

PASTOR and Mrs. W. O. Vaught, Jr., of Immanuel Church, Little Rock, as they were honored by their church recently on their Silver Wedding Anniversary. The church presented them a silver service.

New hospital visiting hour rules

NEW visiting regulations, to protect the welfare of the patients, have been adopted by the Arkansas Baptist Hospital Board of Trustees at the request of the Pulaski County Medical Society.

The new regulations will also be put into effect at St. Vincents Infirmary.

New visiting hours are: 2 p.m. to 4 p.m. except on the maternity floor where the hours will be 3 p.m. to 4 p.m., and, on all floors in the evening, 7 p.m. to 8:30 p.m.

Patients will be permitted to have only two visitors at a time and a strict control of this through some system of registration will be maintained.

Children under 14 will not be permitted to visit in the hospital at any time.

Exceptions: one member of the family will be allowed to remain in the waiting room when the patient is in labor or in surgery; to stay with the patient during the first 24 hours after surgery or if he is critically ill; and to stay with patients under 14.

These visitors will not be allowed to stay overnight without the permission of the nursing supervisor.

Visitor notes will be available before and after visiting hours and will be delivered promptly.

Assistant Administrator W. H. Patterson said that the new regulations would be "enforced firmly and fairly."

The Medical Society is conducting an education campaign to acquaint the public with the new rules, he said.



First Church, DeWitt organizes mission

FIRST Church, DeWitt, has organized a new mission in the northeast section of the city with the opening service Sunday, July 2. By the third Sunday, July 16, total attendance was 35. Prospects for rapid growth are good.

A church census revealed over 200 people living in the small area, most of whom were not in church or Sunday School. Rev. Andrew Heskett is pastor of the First Church, DeWitt.

Hebron ordains deacons

HEBRON Church, 6923 West Twelfth St., Little Rock, ordained four men to the office of deacon Sunday, July 9, 2:30 p.m., at the church. Those ordained were: Charles Anthony, E. A. Lauderdale, Jr., Charles T. Thomas, and Carl Primm.

Rev. J. W. Whitley, the pastor, served as moderator of the ordaining council. Wallace Easterling, a deacon of Gaines Street Baptist, examined the candidates; R. C. Lowe, Jr., of Hebron Church, led the worship; Rev. Richard Perkins, pastor of Gaines Street Church, preached the ordination sermon; Rev. W. Dawson King, of First Church, prayed the ordination prayer; and E. A. Lauderdale, Sr., led the benediction. R. B. Milner, of Hebron, served as the clerk of the council, which was made up of ministers and deacons of Southern Baptist churches of the area.



Arkansas Baptist Newsmagazine Photo

Editor to Ridgecrest

NASHVILLE, Tenn.—Erwin L. McDonald, editor of the *Arkansas Baptist Newsmagazine*, will take part in the program for church administration and public relations conferences at Ridgecrest (N. C.) Baptist Assembly Aug. 24-30.

Dr. McDonald will lead conferences in church public relations. The conference will be directed by Howard B. Foshee, secretary, Church Administration Department, Baptist Sunday School Board, Nashville.

Union Church clears indebtedness

CELEBRATING the retirement of the indebtedness, July 16, on the new Union Church plant (top), East Main Road, El Dorado, was this group of note-burners, left to right: William Burnett, formerly pastor of the church, now pastor of First Church, Judsonia; G. L. Jerry, Pastor. Henry Evans, Doyme Gaddy and Stonewall Jackson.

Seven added to Ouachita staff

OUACHITA College has added seven new members to its faculty for the fall semester, Dr. Ralph A. Phelps, Jr., president, reports.

They are Dr. Carl Goodson, Kenneth S. Moxey, Robert Carl Tabor, George Everett Slavens, Guy T. Nelson, Carl J. Marder, and Mrs. Shirley Burleson.

Dr. Goodson, who will be professor of religion, has been professor of Bible at Southwest Baptist College at Bolivar, Mo., since 1946. He holds a B.A. from William Jewell, a Th.M. from Southwestern Seminary, and a Th.D. from Central Baptist Seminary. He was president of his local Kiwanis club and lieutenant governor of his Kiwanis district.

Moxey will be assistant professor of psychology. Currently working on his doctorate in psychology at the University of Missouri, he holds a B.A. from William Jewell, an M.S.E. from Southern Illinois University, and a B.D. from Southern Seminary. He was professor of psychology at Southwest Baptist College, Bolivar, Mo., 1958-60.

Benson named to OBC football staff

J. N. (BUDDY BOB) Benson, De Queen, has been named head track coach and assistant football coach at Ouachita College, R. D. (Rab) Rogers, athletic director, has announced.

Benson is a 1956 graduate of the University of Arkansas, where he was outstanding in football and track. He played under both Bowden Wyatt and Jack Mitchell at Arkansas, lettering in 1955 as a tailback on the single wing and in 1956 as a halfback on the T-Formation.

While in high school at De Queen, Benson was named to all-state, all-southern, and all-American football teams. He participated in the all-American high school game and was named the outstanding player. He was a top sprinter in track.

Tabor, the new assistant professor of business, holds a B.A. and an M.B.A. from Louisiana State University and has done doctoral work at LSU since 1960.

Slavens will be assistant professor of history. He holds a B.A. and an M.A. from the University of Missouri, where he has completed the residence on his Ph.D. He taught social science at the School of the Ozarks Junior College in Missouri during 1957-59.

Nelson, assistant professor of history, holds a B.A. and an M.A. from Baylor University.

Marder, who will be assistant professor of speech, holds a B.R.E. from Southwestern Baptist Theological Seminary, a bachelor of fine arts from Texas Christian University, and is completing a master of fine arts degree from the Dallas Theater Center of Baylor University.

Mrs. Burleson, an instructor in English, holds a B.S.E. and an M.S.E. from Henderson State Teachers College.

C. F. Pitts resigns

REV. Charles F. Pitts has resigned the pastorate of First Church, Blytheville, effective Aug. 15. He will move to Austin, Tex., to become pastor of Tarrytown Church there.

DR. W. O. VAUGHT, pastor of Immanuel Church, Little Rock, will be the summer commencement speaker at Ouachita College. He will speak to the summer graduates at First Church, Arkadelphia, Aug. 11 at 5 p.m.

COLLEGIATE Baptist Student Unions attaining first magnitude during 1960-61 include Ouachita College BSU, the Student Department of the Baptist Sunday School Board has announced. The Ouachita BSU was one of 35 which achieved the distinction.

Baptist educators meet

DR. RAYMOND A. Coppenger and Dr. Herman Sandford, Ouachita College; Dr. J. C. Atherton, University of Arkansas; and Dr. Robert Moore, Arkansas State College, participated in the second summer Baptist Faculty Conference, July 6-8, at Mars Hill (N. C.) College.

Purpose of the conference was to strengthen the Christian witness of Baptist faculty personnel in the academic community. A representative group of 55 Southern Baptist faculty members from 33 colleges and universities in 12 states attended the meeting.

Minister licensed

EDWARD L. SUDBERY was licensed a minister recently by Maple Avenue Church, Smackover. Mr. Sudbery was formerly an employee of the Goodyear Rubber Company and has been preaching for eight years. He is making plans to enter Ouachita College to complete his formal education. He is married and has two children.



MR. SUDBERY

Central association notes

Hugh Owen, Missionary FIRST Assembly at Spring Lake was well attended. There were three professions of faith and many rededications. There were 189 in attendance representing 20 churches and seven associations.

BEN Owen was elected honor camper (boy) for the First Assembly and Steddie Huggins was elected alternate. Ben is from First Church, Malvern, and Steddie is a member of First Church, Bauxite.

Mitzi Hoover was elected honor camper (girl) and Geneva Comer was elected alternate. Mitzi is a member of Grand Ave. Church, Hot Springs, and Geneva, of Central Church, Hot Springs.

REV. Floyd LaSage has accepted the call of Gravel Hill Church to become pastor. He has been pastor of Gum Springs Church.

Pastor evaluates editors' conference

By BERNES K. SELPH

President, Arkansas Baptist State Convention
Pastor, First Baptist Church, Benton

I'VE just returned from a Southern Baptist Editors' Workshop held on the campus of Syracuse University, Syracuse, N. Y. Editors of Southern Baptist periodicals selected this institution because of its well known school of journalism. Professors from this school directed the study.

Thirty-four editors and writers spent a week studying how to produce better religious journals. Each day was given to lectures on and critical study of periodicals. Professional men took up publication after publication and pointed out their good points and weaknesses. Suggestions for improvements were made.

Content of the writing was not discussed—only a better way of expression. Comparisons between papers were made by the editors, as they eagerly studied together. Every effort was made to stimulate self-evaluation.

Because I have a column in the *Arkansas Baptist Newsmagazine*, I was asked by its editor to attend the conference. I was the only pastor present, so I had opportunity to observe the conference from a different viewpoint.

I saw more clearly the problems which face an editor. His is a many-sided task. He must be designer, theologian, writer, re-writer, public relations man, admin-

istrator, and denominational agent. Most of them have small operating budgets. Costs of publications continue to rise. To successfully meet such requirements demands much.

Too few understand the role of an editor. Readers oftentimes feel he should not express himself editorially. Others think he should not give place to controversial issues. Some object to one thing, some another. Well does the editor know that not all agree with him. But he publishes the paper for all groups of readers and with all types of news.

Sometimes an editor acts as a prophet. He should. He has opportunity to read and preview ideas that the average person does not know exists. This is his business.

His statements aren't meddling. To be sure he's mistaken sometimes, who isn't? But he's often right, too. We were reminded that an editor must have the right of editorially expressing himself—as much right as a pastor has to express himself.

I found the editors wanting to do a better job. This was the purpose of their meeting. Most of them vowed they were going back home and turn out more attractive, readable papers.

One young editor said, "I must get my theological training. I've had a lot of journalistic and printing experience, but I need Biblical and doctrinal background."

The conference closed with a banquet Friday night, July 7. Dr. Edmund Arnold, professor in Typography, spoke. Part of the program was given to fun and good-natured jokes on the writers. The program chairman recognized me as the only pastor present. In mock seriousness, he presented me with an aged English book entitled *Speaking and Writing English*—not a bad suggestion for a pastor. And he may have been more serious than I thought.



—Photo by Erwin L. McDonald

BAPTIST EDITORS' WORKSHOP—Taking professional criticism seriously are, left to right: Leonard Hill, production editor of *THE BAPTIST PROGRAM*; J. Marse Grant, editor of *BIBLICAL RECORDER*; and Donald T. McGregor, associate editor, *BAPTIST STANDARD*.

Beacon Lights of Baptist History

By BERNES K. SELPH, Th.D.
Pastor, 1st Baptist Church, Benton

Arkansas Baptist history

ARKANSAS Baptists were 130 years old before a history was written of their work.

The Executive Board, in 1944, authorized Dr. J. S. Rogers to write a history of Arkansas Baptists: Twenty-seven months later he had compiled this work. The Historical Commission, H. B. Tillman, chairman; E. P. J. Garrott, secretary; B. L. Bridges, W. J. Hinsley, Otto Whittington, W. E. McLeod, W. A. Jackson, Mrs. A. L. Gregg, John Q. Wolf, Mr. W. D. Pye, U. C. Wright, O. J. Wade and L. C. Tedford, assisted him.



DR. SELPH

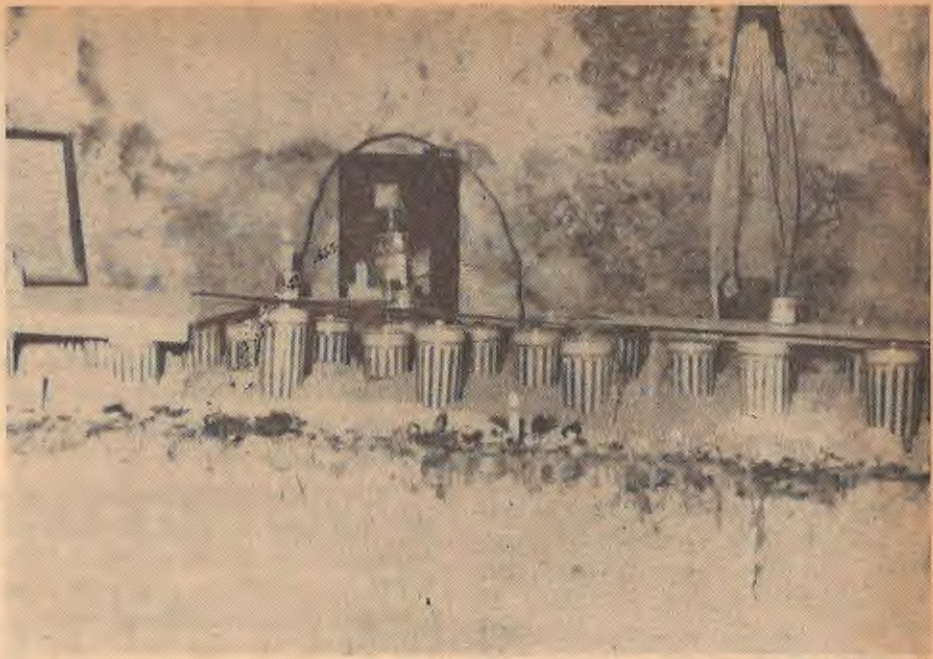
This commission had been appointed in 1945 in anticipation of the coming centennial (1948) of Arkansas Baptists.

Former attempts in this effort had been unsuccessful. About 1910 the state convention had asked Dr. J. B. Searcy to write a history. He wrote a summary of the convention meetings through 1913, but the manuscript was never published. After Dr. Searcy's death, they assigned this duty to Bro. E. J. A. McKinney. He gathered material and wrote historic sketches, but lack of funds and poor health prevented his putting it in final form.

With this material, assistance of churches, associations, the Historical Commission, and 35 years' experience on the field, Dr. Rogers went to work.

He put his material together early in 1947, and spent weeks revising and eliminating. Due to a shortage of paper after World War II, printing was delayed and the book did not come on the market until late winter, 1948.

Its 671 pages cover the entire period of the Baptist work in the state.



—Photo courtesy Rev. Wendell Welch

ISRAELI MEMORIAL—These cans, on exhibit in the Jewish memorial room on Mt. Zion, Jerusalem, contain ashes from some of the 6,200,000 Jewish men, women and children who were exterminated by the Nazis during World War II. More than a million of these were children.



The Eternal Life Insurance and Trust Company

WAS Paul a financier? At least, he was familiar with the language. Three times in rapid order in II Timothy he uses a word equivalent to our "deposit." This, of course, is a banking term, having reference to funds kept in trust by a bank or investment firm.

The first deposit appears in II Tim. 1:12: "I know whom I have believed, and am persuaded that he is able to keep that which I have deposited unto him against that day." This evidently speaks of a deposit of Paul's faith concerning the future which he had invested in God. The "interest" on this deposit is eternal life. Hence, trust in God insures eternal life.

Trust is mutual: so God makes

his "deposit" in return for an investment made with Him. Paul says to Timothy, the man of faith, in II Tim. 1:14: "That good thing which was deposited unto thee keep." This points up the businesslike stewardship demanded of one who accepts the terms of eternal life insurance.

But God does not intend that the man of faith should merely "keep" what God deposits with him. Mutuality demands perpetuity. So, Paul again says to the man of faith in II Tim. 2:2: "The same deposit thou to faithful men, who shall be able to teach others also." This is trust in perpetuity. Man and God: the mutual eternal life insurance and trust company.

Copyright 1960 by V. Wayne Barton, New Orleans Seminary

Foreign Mission Board reports to the people

By IONE GRAY.

THE SOUTHERN Baptist Foreign Mission Board, in its July meeting, appointed nine missionaries to bring the total overseas staff to 1,539.

New missionaries, their native states, and fields of service are: R. Lee Bivins, Georgia, and Sarah Kolb Bivins, South Carolina, appointed for Israel; Jimmie H. Carpenter, Louisiana, and Joyce Strother Carpenter, China, for the Orient; Richard L. Lusk, South Carolina, and Ida Bennett Lusk, Tennessee, for Macao; William D. Richardson, Missouri, and Irma Gowan Richardson, Illinois, for Ghana; and Sue Snider, Texas, for Ghana.

Mrs. Carpenter is the daughter of Dr. and Mrs. Greene W. Strother, emeritus Southern Baptist missionaries to China and Malaya. Three other appointees are children of Baptist preachers.

Dr. Carpenter and Dr. Richardson, medical doctors, and their wives plan to attend theological seminaries for a year before going overseas. During that time the Carpenters' specific country of service in the Orient will be determined.

Mr. Bivins, who holds bachelor and master of science degrees in agriculture, will work at the Baptist Center in Petah Tiqva, Israel, supervising its farm and teaching manual training courses at its school. Mr. Lusk, the only ordained minister in the group, and his wife answer the urgent call for resident missionaries for Macao. Miss Snider is experienced in secretarial as well as religious education work.

Critical needs faced

"IN MAKING these appointments we keep in mind two basic essentials in sustained mission advance," Dr. Baker J. Cauthen, executive secretary, said in his report. "For one thing, there must be an increasing number of missionary volunteers. We have appointed 74 new missionaries so far

in 1961; our objective for the year is 160.

"It is our hope and prayer that throughout the months, a head many trained Christian workers in strategic positions of service here at home will offer themselves for service overseas to help meet some of the critical needs which are pressing upon us.

"The other vital element in mission advance is that of financial undergirding. We are grateful that Southern Baptists are providing, through our channels of missionary giving, increasing funds for worldwide missionary service. We must hold constantly before our people, however, that the needs we face are far in excess of our resources.

"A minimum increase of \$1,000,000 in the operating budget annually is necessary to provide for the basic requirements involved in placing a larger staff of missionaries abroad. This, however, is only part of the increase necessary as requirements for buildings to be used for churches, mission residences, hospitals, schools, seminaries, and publishing houses and other needs grow each year. All of the giving combined still leaves us unable to meet calls for at least \$3,000,000 which are placed before us year by year."

In further action, the Board approved a conference of missionaries representing all the African fields to be held at some central location during the overseas residence of Dr. H. Cornell Goerner, secretary for Africa, Europe, and the Near East. Beginning in early fall, Dr. and Mrs. Goerner will live for periods of one to two months in cities central to areas for which he is responsible. They expect to return to the States about July, 1962.

Secretaries abroad

AT THE time of the Board meeting Dr. Frank K. Means, secretary for Latin America, was vis-

iting mission work in Honduras, Mexico, Costa Rica, and the Baptist Spanish Publishing House, El Paso, Tex. Orient Secretary Winston Crawley was touring work in his area on his way back to the States following a year's residence in Hong Kong.

New promotion head

THE BOARD elected Rev. Joseph B. Underwood, of Albuquerque, N. M., associate secretary for promotion.

COUNSELOR'S CORNER

By DR. R. LOFTON HUDSON

Open on Sunday

QUESTION: The members of my church patronize a local store which is open all day on Sunday.



DR. HUDSON

Even our church buys refreshments (for socials) from this store, and an extension worker goes to these workers in the store and enrolls them. Don't you think we should boycott this store and refuse to put these people on our extension department?

ANSWER: No, I do not.

I regret as much as you do that an increasing number of stores are staying open on Sunday. But I do not think that two wrongs make a right. Furthermore, I believe that both church members and store owners should be given freedom to decide for themselves about these matters.

Would you want to penalize, or punish, people for doing what they decide is right? What of the Golden Rule? What of humility about ideas? What about Christian love?

Set an example yourself, but do not attempt to dominate others.

(Address all questions to Dr. Hudson, 116 West 47th Street, Kansas City 12, Missouri.)

Russian Baptists can't extend church

By PAUL GEREN

WITH OUR emphasis on church extension, Southern Baptists are concerned about under-churched areas.

Suppose you lived in Moscow, under the rule of the Communists. Russian Baptists may have a church only on the authorization of Soviet officials. These officials must allocate a site and building for the church. The officials thus far allow only one Baptist place of worship per community, even in Moscow with its five million people.

We Americans can buy land and build churches wherever we please, subject to zoning regulations and our financial ability. In Dallas, Tex., for example, with less than one million, there are more than 200 Baptist churches. These churches have education buildings, even recreation facilities.

Russian Baptists, on the other hand, are confined to the church building for their services and may not have meetings on the streets or in a tent or in the Kremlin. They may have only one type of service which includes preaching, praying, reading the Bible and singing.

No Sunday School in Russia

THEY can not have a Sunday School. No one may become a member of a Baptist church there before he is 18 years old.

Printing may be done on behalf of churches only by specific allocation of presses which are in charge of state officials. Churches may not maintain libraries or reading rooms and may not give medical or charitable aid. There is no Russian Baptist seminary.

Russian Baptists do not knowingly take a Communist into their membership nor does the Communist party in the USSR (Russia) receive a believer. "It is not to be tolerated that even the smallest manifestation of religiousness should be observed among Communists," a Party document declares.

Russian Baptists are loyal to the government of their country. They serve in the military forces. Most of their jobs can be described as state jobs since the state is the sole employer.

Under the tsars Baptists suffered a persecution from the established Russian Orthodox Church. Since the Communist Revolution in 1917, their number has grown from 100,000 to more than 500,000 church members. Neither their fathers of the tsarist era nor they of the Communist era have lived under conditions of religious freedom as Americans define it.

The Communist Party is superior to the State in the Soviet Union. It directs the State. Article 126 of the Soviet Constitution declares the Party is "the vanguard of the working people in their struggle to build

Communist society and is the leading core of all organizations of the working people, both public and state."

A Soviet election is a "race with one horse." Voters have only one candidate—the Communist Party candidate, for whom most of the people vote "Yes."

Since virtually all economic activity is owned and controlled by the state, the Party likewise controls the economy, as it does education.

The leader in the Soviet Union is such by virtue of his position in the Party and not by virtue of the government office he may hold. Khrushchev, for example, did not become chairman of the Council of Ministers in the government until January, 1958, but his predominance was assured from late 1953 when he was named first secretary of the Party.

More Southern Baptists than Communists

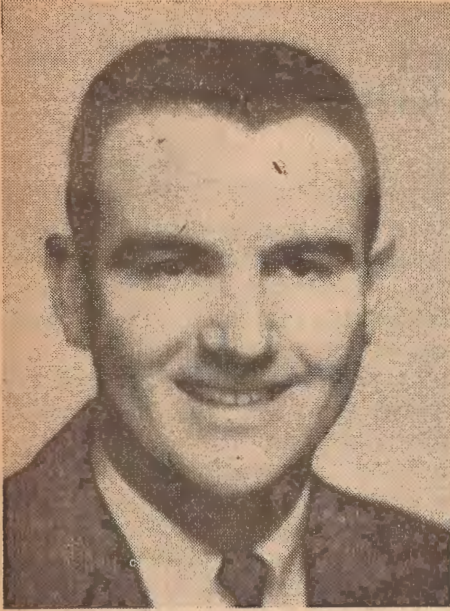
ONLY eight million of the 210 million people in the USSR (Russia) belong to the Party, less than four per cent. There are more Southern Baptists in the United States than Communist Party members in the Soviet Union.

The Party membership is composed chiefly of plant and farm managers, technicians, engineers, government functionaries and military officers. They know and announce the Party line. As leaders in management, information and propaganda, they enjoy special privileges.

Membership in the Party is not easy. First a candidate must be nominated by three Party members who take responsibility for their nominee. The candidate must then serve a probationary period of two years or longer. During this time the candidate is expected to perform good works and demonstrate his fitness for the Party. A question which troubles many of us is: Are the Communists showing greater devotion to their idol than a generation of relaxed Christians show to Jesus Christ who is the way, the truth and the life?

How should Baptists in the United States feel toward Russian Baptists? First, we should not prescribe what they should do any more than they should tell us what to do in our differing circumstances. Second, we should recognize their sincerity in the measure we are able to observe and test it. Third, we should welcome all opportunities of fellowship and cooperation with them in the Baptist World Alliance. Our respective governments are in communication at a diplomatic level. Should Baptists of the USSR and the United States who testify to redemption by the same Lord do less?

What can Christians do about Communism? Read next week's concluding installment for some attitudes toward and action against Communism which we can form.



MR. BROWN



MR. BINNS

PRESIDENT of the University of Arkansas Baptist Student Union is Gary Brown, son of Mr. and Mrs. F. E. Brown of Fayetteville. Gary is a pre-law student and plans to engage in law practice after graduation.

DARRELL BINNS, son of Mr. and Mrs. Grady Binns of Crossett, is the Baptist Student Union president at Southern State College. Darrell is majoring in physical education and will enter the teaching field after college.—Tom J. Logue, Secretary

Training Union

1294 attend assemblies

TWO Training Union assemblies at Siloam Springs, July 3-8 and July 10-15, drew attendance of 1,294 of all ages from every section of Arkansas. There were 620 in attendance the first week and 674 the second week.



MR. DAVIS

Elliff the second week.

There were a total of 164 decisions made during the two weeks. Of this number there were 11 conversions, 60 commitments to church-related vocations, and 93 other decisions.

In 1962, the first assembly will be held July 2-7 for the people of N.W., N.C., W.C., and S.W. districts. The second assembly will be held July 9-14 for N.E., E.C., S.E., and Central districts.

WORKSHOPS, SEPT. 26

Eleven Training Union workshops for experienced and inexperienced workers will be held at First Church, Little Rock, Sept. 26.

Make plans now for several car loads of leaders to attend the one-day meeting.—Ralph W. Davis, Secretary

Foundation

Eating your cake

YOU can have your cake and eat it, too!

The Arkansas Baptist Foundation enables you to disprove the old proverb which says "You can't have your cake and eat it, too." There are various ways in which this can be done. Two of them will be presented here.



ED F.

The first is by Endowment. Endowment is a fund, the principal of which is kept intact and preserved, while the income is used for the purpose designated by the individual making the endowment.

For example: Mr. A donates \$10,000 to the Arkansas Baptist Foundation as an endowment in his name with the income therefrom to be remitted regularly to some designated Baptist institution. Assuming this fund has an average annual yield of 5 percent over a 20-year period, at that time the earnings will have equalled the original donation. Mr. A will thereby be witnessing for Christ, not for just one year or 20, but 'till Jesus comes again.

The second method is by Gift Annuity. It operates, in effect, the same as an endowment except it delays the benefits to the Baptist Agency until the death

of the donor.

For example: Let us assume that Mr. A needs the income from the aforementioned \$10,000 during his lifetime. The income would then be paid to him as long as he lived and at his death to the agency of his choice. This annuity for Mr. A would be determined by his age at the time he made the donation.

Yes, you can have your cake and eat it, too! For help or further information, contact the Arkansas Baptist Foundation, 401 West Capitol Avenue, Little Rock, Arkansas.—Ed F. McDonald, Jr., Secretary

Missionary Union

Girls' camps in progress

THOSE who will be attending the junior Girls' Auxiliary Camp at Ferncliff July 31-Aug. 4 will be privileged to know and hear Miss DeVellyn Oliver, Southern Baptist missionary nurse in the Philippines.



MISS OLIVER

"What about me?" she used to wonder as she prayed that God would provide missionaries to meet the needs of the world. The answer to that question took her to Mati, in eastern Mindanao, where she works with another missionary nurse and Filipino doctors and nurses at a 30-bed hospital that was recently designated as a model small hospital for the Philippines. It serves an area that was formerly nine hours, by boat, from hospital care.

A native of Hampton, Ark., Miss Oliver received the bachelor of science degree from Baylor University School of Nursing, Waco, Tex., and during this furlough has completed her work at the New Orleans Baptist Theological Seminary. Before appointment she served for a time at the Arkansas Baptist Hospital.

Registrations are now being received at the state W.M.U. office for the Intermediate G.A. Camp, Aug. 7-11 and the Y.W.A. Houseparty Aug. 12-13. Miss Josephine Scaggs of Nigeria will be guest missionary at these camps.—Nancy Cooper, Executive Sec'y.-Treas.

LET'S GO CAMPING, GIRLS!

Ferncliff

July 24-28—Junior GA Camp

July 31-August 4 — Junior GA Camp

Aug. 7-11 — Intermediate GA Camp

Aug. 12-13 — YWA Houseparty

Send \$2 Registration to
Woman's Missionary Union

310 Baptist Building
Little Rock

Somebody special

By GRACE KROGH BOLLER

MERRY picked zinnias, marigolds, cosmos, and asters until she had a big, beautiful bouquet. She was so busy that she did not notice Jerry and Jane as they came up to watch her.

"What are you doing, Merry?" Jane asked at last.

"I'm picking flowers," Merry laughed.

"For somebody special?" Jerry wanted to know.

"For somebody special," Merry smiled. "It is Mrs. Brewster's birthday today. She lives in the Home for the Elderly on the hill. Remember, she used to have the candy store on Drew Street?"

"Oh, yes," Jerry nodded. "She always gave two pennies worth of candy for one cent. I was sorry when she closed the store and went to live in the Home."

"So was I," Jane added, "but not because of the candy, just because I like her and I miss her."

Jerry looked uncomfortable then because he really liked Mrs. Brewster, too, and not just because she gave him candy.

"I wish I had flowers to give her for her birthday," he thought out loud.

"She wouldn't want more flowers than Merry has for her," said Jane, "but I wish we had a cake for her. Jerry, do you suppose if we bought a package cake, Mother would help us mix it and bake it?"

"Of course she would," Jerry's eyes brightened. "We have our allowances that we earned helping at home."

"I'll put the flowers in water," Merry offered, "and wait until this afternoon to visit Mrs. Brewster. By then, you will have the cake ready, and we can go together."

Jerry and Jane skipped happily home to talk to Mother. On the way they met George and Betty and told them about Mrs. Brewster's surprise birthday.

"We'll go with you," Betty promised. "I'll ask Mother to help us make fudge for the party."

Soon the plans were known all over the neighborhood.

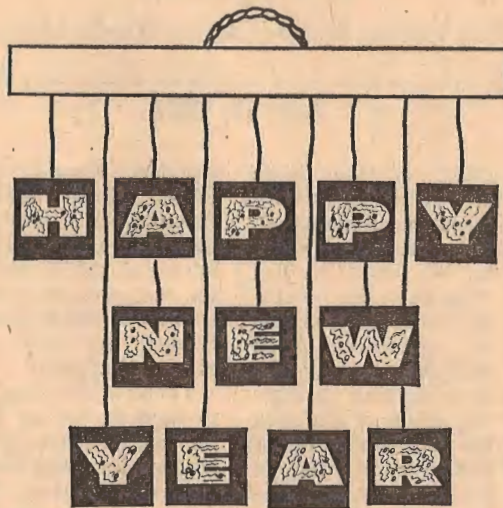
As the boys and girls went down to the store to buy birthday cards for their old friend, they heard the whole town buzzing about the birthday. Some people were taking up a collection to buy Mrs. Brewster a radio for her room. Others were planning such gifts as a magazine subscription, a new Bible, and a pretty pin.

By the time the cake was baked, iced, and decorated, most of the town was ready to go to the birthday party. It was like a parade as Merry carried the flowers, George and Betty the fudge, and Jerry and Jane the cake.

My, but Mrs. Brewster was surprised and pleased! She could hardly talk for surprise. It was hard to say if she was any more pleased than the other ladies in the home. A party was fun even if

Mobile spelling game

By EDNA M. WHITE



A SIMPLE mobile provides amusing entertainment for a person confined to a sickroom.

Cut letters of the alphabet from old greeting cards or magazines, and paste each one on a square of artcraft paper. Insert a heavy thread between the letter and the paper.

Attach the other end of the thread to a strip of heavy cardboard so that the letters will dangle freely when the mobile is hanging. A slight breeze will

keep the letters twirling to different positions.

The game is to see what words can be spelled as the letters appear. If you cut a set of two or three words, like "Birthday Greetings," "Merry Christmas," or "Happy New Year," you will have enough letters to spell a great many words. One can easily make one hundred words from the letters in "Birthday Greetings."

(Sunday School Board Syndicate, all rights reserved)

God's wondrous world

If men loved flowers

By THELMA C. CARTER

A FAMOUS man said, "If men loved flowers and nature more, they would have less time to fight and start wars!"

As a boy, this man learned to prune roses. He called it a lesson in thorns. He cut grass, weeded gardens, raised vegetables, watered potted plants, and did yard chores. He and his brother were never at a loss for something to do. As a result, they became curious and genuinely interested in the great unseen forces of God in nature.

Today the man is a scientist. As he works in his chosen field, he often remembers the constant weeding and grass cutting that were necessary around his parents' home.

Nature herself is a great teacher. We see this in the chores that nature creates and man performs. Job said, "Speak to the earth, and it shall teach thee" (Job 12:8). Even though the tasks before us do not appear exciting, if we

take a few moments to observe and think, we may find a whole new world we didn't know existed.

There is an unbelievable storehouse of courage in the strong, fighting plant world about us. There is courage even in the pest plants — in dandelions, wild mustard, marsh buttercups, wild poppies, field daisies, and the many kinds of grasses. All are fighting for a peaceful situation in which to grow.

A moment of thought and study of the razor-edged, saw-toothed, insect-catching waxes of wild plants can fill you with awe and wonder.

If you are fortunate enough to spend your vacation in the mountains, you may even feel a strange friendliness toward the pearly-petaled blossoms of the wild snakeroot and wild carrot plants that cover our beautiful mountains. Think of it! All are fighting for a tiny niche of earth in which to grow.

(Sunday School Board Syndicate, all rights reserved)

it wasn't your own birthday. Everyone enjoyed the cake and fudge, and someone had brought ice cream, too.

"Why, I feel like someone special!" cried Mrs. Brewster.

"You are someone special," Merry told her. "You are Grandma Brewster to all of us. We need a nice grandma like you."

(Sunday School Board Syndicate, all rights reserved)

Thomas, the realistic seeker

By K. ALVIN PITT

Pastor, Baring Cross Church, North Little Rock

John 11:5-16; John 14:3-6; John 20:24-29; Acts 1:13

July 30, 1961

A SERIOUS study of the Bible character before us will reveal quickly that he has been most misunderstood.



MR. PITT

Through the years he has been labelled "Thomas, the doubter," a label given him by preachers and teachers, alike, who were seeking to show the factor of doubt in his life which ought not to be in ours. To be sure, a measure of doubt did enter into Thomas' thinking; however, it was not doubt that was fixed and absolute, but doubt which was searching for truth. It was honest doubt that would not accept pious platitudes about life in Christ but wanted to know for itself.

If that is wrong then Paul's exhortation to Timothy would be meaningless: "Study to shew thyself approved, a workman that needeth not to be ashamed, rightly dividing the word of truth." He was saying, as it were, "Timothy, study for yourself. Don't accept what somebody else tells you without searching out the truth for yourself. Stand approved as a gleaner and believer of the Word of God through your own labor."

LET us notice three things about him in our Scripture.

First, he faced up to the situation at hand. John 11:7-8, 16.

Jesus has announced His intention of returning to Judea that He might go to Bethany, where His friends, Mary, Martha and Lazarus, lived. Word has reached Him that Lazarus is sick. Because He wants to perform a miracle for the glory of God, He waits until His sick friend has died to say to His disciples, "Let us go into Judea again."

Remembering the hostility that had been levelled against Him there just a little while before, they were shocked to the point of exclaiming, "Master, the Jews of late sought to stone thee; and goest thou thither again?" When He made it clear that He must go, Thomas spoke up, challenging the rest of the disciples, "Let us go, that we may die with him."

Somebody has called this "heroic despair," meaning Thomas fully expected Jesus to be killed if He returned to Judea, but was willing to die with Him. Call it what you will, we must not overlook the fact that he did not look at the

situation through rose-colored glasses. He may have failed to see that Jesus' enemies could not touch Him until His hour was come, but he did not ignore or minimize the hatred they had for Him. He had seen that hatred express itself as stones were taken up to kill Him. Thomas had to be a realist in the face of proven facts.

There is a crying need today for men to face up to the fact, the power, and the consequence of sin in our world. Modern man has lost his vision of what sin is and does. Consequently, he is desperately trying this gimmick and that plan to bring himself out of the mess he has made of life. If he does not see sin as the cause, he is not likely to see Christ as the answer.

We can't afford to look at life as it is in this hour through rose-colored glasses. If we do we will not get a true picture of the situation of man and the condition of our world. Sin has done its deadly work the world over, and men are desperately fearful because of the uncertain, shaking world in which they find themselves. God help us to see this and to proclaim both the cause — sin — and the cure — Christ — as never before. God help us to be realists, like Thomas.

Second, he asked a qualifying question. John 14:3-6

One of the most consoling passages of Scripture for believers in time of sorrow is the passage which we are considering now. Jesus' death is just a few hours away. Knowing that the hearts of the disciples are heavy with sorrow at the thought of His leaving them, He seeks to better prepare them for His departure by telling them a little about heaven.

He said: In my Father's house are many mansions: if it were not so, I would have told you. I go to prepare a place for you. And if I go and prepare a place for you, I will come again, and receive you unto myself; that where I am, there ye may be also. And whither I go ye know, and the way ye know.

This was too much for Thomas, who did not understand what Jesus meant. So he interrupted with the statement: Lord, we know not whither thou goest, and how can we know the way.

Then Jesus answered with words that make crystal clear who He is: I am the way, the truth, and the life: no man cometh unto the Father but by me.

While I am sorry that Thomas did not know what Jesus was talking about, and had to receive a further word of

clarification, I am so happy he expressed his lack of understanding so that Jesus could give what we consider a clear statement of His person. He is the way — the way to God, to Heaven. He is the truth — the truth of and about God. He is the life — the life of God to lost men. He is the only way to God. No man can come to God, no man can know truth, no one can have life except through Him.

Aren't you glad that Thomas spoke up when he did so that we could get that facet of truth from the lips about Jesus? Do you ask questions as you read God's Word? Do you raise questions as you hear the Bible taught and preached? Many people, I am afraid, don't manifest that much interest. There are things they don't understand, but they don't bother to get the answers. How we do need to be like Thomas, facing up to the situation as it is, and asking questions about what is not clear to us.

Third, He desired a first hand experience. John 20:24-29

I have an idea that if Thomas were a member of the average Southern Baptist church today he might be accused of being obstinate and stubborn. He was not a man who was easily influenced by what someone else thought or believed. He had to know for himself before he could believe.

The time is the evening of the day on which Jesus was resurrected. He appears to His disciples in an upper room, probably the very place where He had instituted the Lord's Supper before His death. All but Thomas were present. Where he was we do not know. We can only say that because he was not with them, he missed a blessing.

This would lead me to say that when we absent ourselves without real reason from God's people we also miss a blessing. The disciples were privileged to see the risen Lord. Thomas was not there for the confirmation that Jesus had risen from the dead as He said He would.

Later when the other disciples tried to tell him what they had seen, he replied:

Except I shall see the print of the nails, and put my finger into the print of the nails, and thrust my hand into his side, I will not believe.

Eight days later, Jesus made another appearance to this same group, this time with Thomas present. The resurrected Lord gave him a chance to do the very thing he said he must do to believe: He said,

Thomas, reach hither thy finger, and behold my hands; and reach hither thy hand, and thrust it into my side: and be not faithless, but believing. This answered Thomas' doubt as to whether Jesus had really arisen and he exclaimed, "My Lord and my God." Then Jesus said:

Thomas, because thou hast seen me, thou hast believed: blessed are they

that have not seen, and yet have believed."

I wish Thomas could have accepted the fact of Jesus' resurrection without having to have more proof, but I do admire him for not being willing to accept the word of somebody else, and let it go at that. He didn't want a second-hand faith.

Have you had such an experience? Have you had a personal experience with the Lord Jesus Christ? Do you know about Him? Or do you know Him? Be like Thomas: come to know the truth of God for yourself in a personal encounter with the crucified, resurrected Lord!

Attendance Report

July 16, 1961			
Church	Sunday School	Training Union	Additions
Beirne, First	90	86	
Berryville, Freeman Heights Camden	172	89	1
Cullendale First	354	209	
First	438	197	1
Conway, First	480	99	3
Cove, First	46	26	
Crossett, First	392	214	6
El Dorado			
East Main	205	131	4
First	528	221	
Immanuel	394	269	3
Cook Street Mission	11	19	
Parkview	171	92	
Ft. Smith			
Calvary	318	105	4
First	1410	452	8
Grand Avenue	688	257	4
Mission	24		
Kelley Height	156	82	6
Towson Avenue	199	77	6
Trinity	309	107	
Gravel Ridge, First	142	81	
Harrisburg			
Calvary	173	90	4
First	300	150	
Harrison, Eagle Heights	243	92	
Hot Springs			
Park Place	466	146	4
Second	756	210	
Huntsville, First	113	52	
Kingston	32	23	
Combs	18	15	
Jacksonville, First	622	293	5
Jonesboro, Central	444	161	2
Lewy	550	212	7
Little Rock			
First	966	505	2
Gaines Street	351	206	
Dennison	51	69	2
Immanuel	1200	423	7
Forest Tower	34	22	
Kerr	41	36	
McGehee, First	360	184	6
Mission	32	20	
Mountain Home, East Side	85	65	12
North Little Rock			
Baring Cross	663	221	2
Highway	201	88	
Park Hill	622	801	5
Rogers, Sunnyside	124	43	
Smackover, First	220	167	3
Van Buren, First	431	159	4

THIS is to give notice that Rev. and Mrs. Jim D. Jones are no longer associated with the Bottoms Baptist Orphanage.

—H. C. Seefeldt, Superintendent

A Smile or Two

Wonderful results

DR. PHILIP B. HARRIS, secretary of the Training Union Department of the Baptist Sunday School Board, gifted in getting to know people and getting other people to know each other, was rather taken aback at Ridgecrest the other day as the result of a statement he made.

It seemed he asked a morning session to "make at least one new friend by supertime."

Running up to him that afternoon, a young lady beamed, "Oh, Dr. Harris, I heard what you said this morning about making a new friend, and I wanted you to be one of the first to know — I'm now engaged!"

In telling this, Dr. Harris explained that there had been some correspondence between the couple before coming to Ridgecrest.

Okra a la Nibble Nook

A STANDARD joke with the Ridgecrest staff was created when the kitchen served stewed okra about three times the first couple of weeks, and several times since. A lot of good humor stemmed from this, such as the fact staffers have confidently been expecting okra omelettes some morning and a new ice cream flavor at Nibble Nook, okra ripple!

The climax to the story came when hamburgers were served one evening and John Varnado, Morrison's Food Service manager, broke out over the microphone with: "We always like to provide little 'extras' for the staff, and the head chef has informed me that all those desiring okra on their hamburgers may have it!"

Good night at Ridgecrest

MRS. BYRON COX, head hostess in Pritchell Hall, Ridgecrest, has as one of her principal duties closing the lobby each night. On one recent evening as she pulled the main switch of lights on the front porch to signify the time for parting had arrived, she left the small outside yellow light on as usual and approached some porch guests with:

"Do you know what that little yellow light says?"

"No, what?" asked one guest.

"It says, 'Goodnight, little darling,'" she assured him.

"Good-night, little yellow light," he replied.

Musical tot

WE are quite sure that our young toddler is musically gifted. The other day he took a tumble off the divan and as we picked him up he remarked, "Mi fa la fa sofa!"

That's handy!

WIFE: "All men are fools."
Hubby: "Yes, dear, we were made that way so all you girls wouldn't have to be old maids."

INDEX

A	Attendance report—7-27 p19
B	BSU presidents—7-27 p16
	Baptist educators meet—7-27 p11
	Baptist pastors honored—7-27 p24
C	'Capacity for happiness' (CMH)—7-27 p6
	Central association news—7-27 p11
	Children's Nook—7-27 p17
	Church and worldliness (letter)—7-27 p5
	Communism, a searchlight on—7-27 p15
	Contributions, quarterly report—7-27 p20-24
	Convention, Southern Baptist, elections (E)—7-27 p4; (letter)—p5; program (CR) p2
	Cooperative Program survey (Exec. Bd.)—7-27 p2; 1961 receipts—p3
	Counselor's corner—7-27 p14
D	Davis, Joy Vee, awarded scholarship—7-27 p9
	DeWitt, First, mission organized—7-27 p10
E	Editors' conference, evaluation—7-27 p12; 'Keep it simple, he said' (PS)—p4
	El Dorado, Union church, clears debt—7-27 p10
F	Foreign Mission Board report—7-27 p14
	Foundation, Baptist, gifts—7-27 p16
	Ft. Smith city-wide revival—7-27 p3
G	Gleanings from Greek New Testament—7-27 p13
H	History, Arkansas Baptist (BL)—7-27 p13
	Hospital, visiting hours—7-27 p9
	Howard, Reese, resigns—7-27 p8
J	Jonesboro, New Hope, pastor resigns (letter)—7-27 p5
L	Lake Village church centennial—7-27 p7
	Little Rock, Hebron church, ordains deacons—7-27 p10
M	McDonald, Ed F., Jr., on job—7-27 p8
	McDonald, Erwin L., on program—7-27 p10
O	Oliver, DeVellyn, at GA camp—7-27 p16
	Orr, Donald L., family returns to Columbia—7-27 p9
	Ouchita College, football staff—7-27 p11; new faculty—p11
P	Piggott, Emmanuel mission (letter)—7-27 p5
	Pike, Harrison, family on furlough—7-27 p9
	Pitts, C. F., resigns—7-27 p11
S	Smile or two—7-27 p19
	Southwestern Seminary Arkansas graduates—7-27 p3
	Stewardship materials (Exec. Bd.)—7-27 p2
	Sudbery, Edward L., licensed—7-27 p11
T	'Thomas, the realistic seeker' (SS)—7-27 p13
	Training Union assemblies—7-27 p16
V	Vaught, Dr. and Mrs. W. O., Jr., anniversary—7-27 p9

Key to listings: (E) means "editorial"; (PS), Personally Speaking; (SS), Sunday School, (CMH), Courtship, Marriage and the Home; (GR), Baptist Crosscurrents; (BL), Beacon Lights of Baptist History. The first numeral is the number of the month, as 10 for October and the second number indicates the day of the month the issue was published.

RECEIVE

6%

INTEREST

ON YOUR SAVINGS

Regular Saving - Reaps Security

Start with \$10.00 - \$100.00 - \$1,000.00
or any amount

YOUR MONEY IS ALWAYS AVAILABLE WHEN NEEDED

Open your savings account today
by mail or in person

Name _____

Address _____

City _____ State _____

Baptist Building Savings, Inc.

556 Madison Ave. Bldg.

JA 3-1240 Memphis 3, Tenn. JA 3-1240

QUARTERLY REPORT

Total Cash Contributions Received in Office of Executive Secretary of

Executive Board of the Arkansas Baptist State Convention During the Months of

April, May and June, 1961

Notify Dr. S. A. Whitlow, 401 West Capitol, Little Rock, Arkansas, if any errors are found in this report.

Churches and Pastors	Cooperative Program	Designated	Churches and Pastors	Cooperative Program	Designated	Churches and Pastors	Cooperative Program	Designated
ARKANSAS VALLEY			Mason Valley: J. Stephen	58.37	31.00	Denton: V. Heydenreich	---	---
Barton: K. Caery	\$180.86	---	Monte Ne: W. Bland	105.66	---	Evening Shade: B. Kennedy	80.48	---
Beck Memorial: E. Hight	61.69	---	Pea Ridge 1st: B. Green	481.48	---	Fellowship: E. Lancaster	139.10	---
Brickeys: B. Smith	---	---	Pleasant Hill: K. Armstrong	30.40	---	Hartford 1st: H. Plunkett	234.30	\$112.27
Brinkley 1st: J. Gullede	1,047.99	\$5.02	Rogers 1st: L. O'Kelley	1,994.59	345.63	Haw Creek	45.91	---
Clarendon: L. Joyner	150.00	61.03	Siloam Springs 1st: C. Palmer	1,804.89	715.00	Hon: A. Willsey	---	---
Corders Chapel: W. Ginn	---	---	Sugar Creek: J. Lawson	22.78	---	Huntington: B. Martin	118.84	10.00
Elaine: M. Dark	1,284.06	67.80	Sulphur Springs 1st: F. Hamilton	---	---	Ione: E. Hicks	---	---
Friendship: J. Heskett	---	---	Sunnyside, Rogers: J. Overton	67.96	35.73	James Fork: E. Hogan	16.17	---
Helena 1st: J. Brewer	2,882.98	16.39	Twelve Corners: J. Lawson	11.85	---	Long Ridge: R. Whitten	---	---
Hughes: B. Pierce	900.00	275.63	Park Street Mission	15.00	---	Mansfield: C. Lyon	673.03	126.61
Jeffersonville: A. Wyatt	6.00	---	Trinity Chapel	13.75	---	Midland: R. Lanman	103.18	---
Lambrook: W. Steward	20.44	---	Total	\$10,277.94	\$1,982.86	New Home: W. Nance	5.00	---
Lexa: L. Castleman	56.07	---	BIG CREEK			Parks: H. Allen	42.00	10.00
Marianna 1st: D. Haire	1,559.93	211.13	County Line: B. Colbert	\$4.00	---	Pilot View: P. White	---	---
Marvell: C. Thompson	253.82	115.28	Elizabeth	4.50	---	Pleasant Grove No. 2: J. Evans	42.00	---
Monroe: P. Stender	38.80	---	Enterprise: C. Denham	30.64	\$8.06	Pleasant Grove No. 3: A. Willsey	---	---
Moro: J. Collier	100.00	---	Flora: P. Freeman	5.71	---	Providence	1.70	---
North Side, Helena: J. Gordon	8.00	---	Gum Springs	9.00	---	Rock Creek: P. Black	23.96	---
Old Town: D. Steele	---	---	Hardy: P. Harrington	243.09	33.17	Shiloh: D. Preston	---	---
Oneida	---	---	Mammoth Spring: E. Flowers	48.12	---	Union Hope: R. Miller	5.00	---
Pettys Chapel: D. Wells	---	---	Mt. Calm	---	---	Unity: L. Thomas	---	---
Rhobeth: B. Smith	32.00	---	Mt. Zion: C. White	11.05	---	Waldron 1st: T. Spurgin	2,668.73	4.75
Snow Lake: R. Raiford	9.10	---	Salem: J. Brown	97.00	26.00	West Hartford: W. Leonard	153.08	137.76
Turner: R. Kimble	162.99	18.05	Spring River: F. Wise	18.60	---	Winfield: L. Woodard	---	---
West Helena: W. Deese	2,238.95	197.83	Viola: A. Wiles	30.00	---	Total	\$4,449.91	\$451.39
West Helena 2nd: R. Parchman	258.22	31.47	Total	\$501.71	\$88.45	BUCKVILLE		
Total	\$11,251.40	\$999.63	BLACK RIVER			Cedar Glades: O. Nobles	---	---
ASHLEY			Alicia: J. Cossey	\$68.25	---	Mt. Tabor: O. Noles	\$10.00	---
Calvary, Crosssett: R. Adams	---	---	Banks: S. Norris	---	---	Mountain Valley: J. Anderson	18.00	---
Corinth A: E. Fulton	\$100.50	---	Black Rock: J. Mitchell	22.74	---	Rock Springs: H. Speer	22.14	---
Crosssett 1st: B. Hickem	4,785.00	\$387.00	Campbell Station: J. Baker	---	---	Total	\$50.14	---
Crosssett 2nd: H. Braswell	30.40	---	Clear Springs: O. Davis	---	---	CADDO RIVER		
Eden: M. Doss	---	---	College City, Walnut Ridge: C. Johnson	141.31	\$2.21	Amity: J. Watson	\$13.00	\$43.33
Fellowship: R. Carpenter	186.80	---	Diaz: D. Cooper	---	---	Black Springs: A. Beshears	15.00	---
Fountain Hill	70.33	---	Grubbs: J. Walker	---	---	Caddo Gap	15.00	8.36
Hamburg 1st: E. Griever	1,526.00	---	Horseshoe: L. Bankster	---	---	Glenwood: B. Denton	249.53	4.99
Jarvis Chapel: R. Nixon	95.47	---	Hoxie: R. Cadwell	215.40	11.50	Liberty: E. Worley	---	---
Magnolia: W. Braswell	18.14	---	Imboden: J. Smith	250.66	---	Little Hope: A. Beshears	---	---
Martinville: S. Gardner	---	---	Immanuel, Newport: W. Davis	375.00	2.25	Mt. Gilead: S. Sherman	---	---
Meridian: D. Kelley	---	---	Jacksonport: J. Fuqua	22.64	6.00	Mt. Ida: J. McClenny	437.14	14.00
Mt. Olive No. 1	---	---	Murphy's Corner: R. Criner	45.47	---	Norman: W. Gilbreath	143.26	---
Mt. Olive No. 2: W. Brown	466.54	57.25	New Hope No. 1: W. Behanon	61.46	---	Oden: B. Probasco	174.35	6.00
Mt. Pleasant: S. Compere	10.00	---	New Hope No. 2: S. Norris	20.75	---	Pencil Bluff	39.33	---
Mt. Zion: E. Morgan	8.75	---	Newport 1st	1,536.76	233.61	Pine Ridge	---	---
North Crosssett: D. Dodson	181.16	34.94	Old Walnut Ridge	15.22	---	Refuge	21.00	---
Sardis: L. Tucker	---	---	Ozark: S. Wells	51.02	---	Sulphur Springs: C. Moore	56.66	2.00
Shiloh: D. Wesson	18.00	---	Pitts	2.00	---	Total	\$1,168.36	\$78.68
Temple, Crosssett: J. Buckner	678.65	---	Pleasant Ridge: J. Hall	7.50	---	CAREY		
Unity	---	---	Pleasant Valley: P. Schwenk	---	---	Bearden 1st: S. Cathey	\$330.44	\$53.35
Total	\$8,175.74	429.19	Ravenden: B. Johnson	11.00	---	Bethesda: G. Brown	7.50	---
BARTHOLOMEW			Sedgwick: C. Fowler	56.00	---	Calvary, Camden: R. Blann	42.00	26.00
Antioch: B. West	---	---	Smithville: J. Cothren	58.62	1.00	Dalark: L. French	8.28	---
Cominto: T. Christmas	---	---	Swifton: H. Haney	43.25	---	Eagle Mills	---	---
Corinth B	\$15.00	---	Tuckerman: B. King	70.00	2.85	Fordyce 1st: C. Ellis	3,203.47	33.20
Eagle Lake: C. Howie	16.89	---	Walnut Ridge 1st: W. Heard	1,125.00	294.43	Hampton: C. Pennington	542.68	---
Ebenezer	118.67	---	White Oak: G. McGhehey	---	---	Harmony	9.00	---
Enon: L. Brady	77.53	---	Total	\$4,227.06	\$554.85	Holly Springs: J. Albritten	30.00	11.56
Florence: H. Gray	15.00	---	BOONE			Manning: R. Carpenter	40.79	---
Holly Springs: R. Harris	43.00	---	Alpena: S. Hacker	\$214.20	\$47.00	New Hope: E. Weatherly	61.46	21.25
Immanuel, Warren: D. Newberry	305.18	---	Batavia: K. Edmondson	33.00	---	Ouchita: J. Graves	33.55	---
Ladell	9.00	---	Bear Creek Springs: J. McBee	24.00	---	Prosperity: B. James	74.10	---
Macedonia: R. Shreve	30.00	---	Bellefonte: E. Powers	38.03	---	Shady Grove: W. Womack	---	---
Marsden	4.00	---	Burlington	25.46	---	Southside, Fordyce: J. Hurd	10.85	---
Monticello 1st: T. Welch	362.00	\$35.50	Eagle Heights, Harrison: D. Jackson	500.00	210.15	Sparkman: D. Lumpkin	683.36	---
Monticello 2nd: J. Holcomb	313.61	68.71	Elmwood: W. Knabe	15.00	---	Thornton: W. Poole	112.21	13.46
New Liberty	---	---	Emmanuel, Harrison: C. Roten	41.19	33.02	Tinsman: P. Caldwell	56.60	---
North Side, Monticello: R. Dottley	129.20	40.50	Everton: E. Powers	11.28	---	Willow: C. Launius	9.00	---
Old Union: H. Gray	---	---	Gaither: J. Carter	15.00	---	Round Hill Mission	---	---
Pleasant Grove: D. Castleberry	10.00	---	Grubb Springs: D. Champlin	36.29	---	Total	\$5,247.79	\$166.32
Prairie Grove	---	---	Harrison 1st: R. Hilton	2,502.86	156.70	CAROLINE		
Saline: H. Gray	---	---	Hopewell: M. Spence	10.00	---	Austin Station: E. Eldor	\$65.47	---
Selma: R. Johnson	17.10	---	Lead Hill: T. Eoff	49.31	---	Baugh's Chapel: C. Fuller	55.29	---
Union Hill: D. Castleberry	30.00	---	New Hope: E. Cox	90.63	---	Biscoe: M. Rice	43.00	\$16.25
Warren 1st: W. Speed	2,806.06	270.40	Northvale: H. Allred	147.70	---	Brownsville: W. Ross	46.23	---
Wilmar: J. Worthington	50.01	---	Omaha: P. Fitchue	102.85	12.85	Cabot 1st: H. Lipford	1,343.29	164.95
Total	\$4,352.25	\$415.11	Oregon Flat: T. Logan	79.52	---	Caney Creek: W. Barbour	158.20	---
BENTON COUNTY			Prairie View: G. Roberts	12.00	---	Carlisle: R. Bishop	1,263.61	---
Bentonville 1st: A. Butler	\$1,466.01	\$312.50	Southside, Lead Hill: J. Stratton	55.00	6.04	Chambers: M. Bridges	6.00	---
Centerton 1st: M. Coffelt	159.44	57.75	Union	29.52	---	Cocklebur	27.36	---
Central Avenue, Bentonville: J. Highfill	59.60	74.70	Valley Springs: R. Reed	26.00	---	Coy: A. Escott	120.00	1.70
Decatur: C. Bateman	824.00	171.63	Woodland Heights, Harrison	90.19	---	Des Arc: E. Banton	209.19	45.00
Garfield: J. Ford	63.06	29.00	Western Grove Mission: P. Taylor	10.85	---	DeValls Bluff	71.71	---
Gentry: J. Jones	1,069.29	24.49	Total	\$4,159.88	\$465.76	England 1st: H. White	1,075.33	64.51
Gravette: W. Mattingly	330.27	55.50	BUCKNER			Hazen: W. Byrum	395.19	7.69
Gum Springs: R. Barnett	92.47	---	Abbott	\$18.00	---	Humnoke: F. McMenis	24.85	---
Harvard Avenue, Siloam Springs: C. Rossos	516.11	5.00	Amity: M. Pittman	---	---	Keo: J. Byrum	550.00	---
Highfill: E. Britton	195.55	9.00	Bates	---	---	Lonoke: J. Harvill	1,428.06	486.53
Immanuel, Rogers: F. Aikman	593.11	115.93	Calvary, Mansfield: D. Schleiff	---	---	Mt. Carmel	123.01	4.90
Lakeview	101.42	---	Cauthron: D. Preston	7.01	---	New Hope	24.70	---
Lowell: R. Matthews	200.88	---	Cedar Creek: W. Nance	---	---	Oak Grove: T. Richardson	50.00	---
			Clark's Chapel: J. Maness	15.00	---	Old Austin: C. Hill	89.50	8.00
			Dayton	52.42	---	Pleasant Hill: M. Faulkner	5.50	---
						Pleasant Valley: E. Ridgeway	---	---

Churches and Pastors	Cooperative Program	Designated	Churches and Pastors	Cooperative Program	Designated	Churches and Pastors	Cooperative Program	Designated
Center Hill: H. Ferguson		9.75	Memorial Waldo: J. Bledsoe	258.83		Pleasant Valley		
Clarks Chapel: L. Jamieson	45.00		Mt. Zion	30.00		Post Oak	15.00	
Delaplaine: M. Prince	18.00		Piney Grove: J. Irish	32.25		Quitman 1st: D. Dipert	39.74	
East Side, Paragould: L. Jackson	558.33	63.66	Pisgah: J. Duncan			Shiloh	7.80	
Eight Mile	3.00		Red River: R. Lawrence	111.31		South Side, Heber Springs: J. Baker	18.00	
Fairview			Rocky Mount: C. Pearson	76.04		Sunny Slope Mission		
Finch: H. Clegg	45.90		Shiloh Memorial: B. Worley	91.90		Woodrow Mission		
Fontaine: F. Carr	6.00		South Texarkana: J. Skinner			Total	\$607.86	\$50.81
Immanuel, Paragould: G. Giles	186.29	35.00	Spring Hill: B. Myers	42.62		LITTLE RIVER		
Lafe	27.60		Stamps 1st: W. Perry	1,750.00	248.56	Ashdown: R. Ward	\$685.63	\$8.45
Lake Street, Paragould: R. Lyons	9.00	3.00	Silverino: J. Wilson	120.00	19.03	Ben Lomond: C. Zachry	3.00	
Light: B. Cartwright	87.50	7.40	Tennessee: A. Smith	70.04	77.22	Bingen: D. Johnson		
Marmaduke: G. Renshaw	71.45	17.73	Trinity, Texarkana: L. Hughes	104.00	107.00	Brownstown	9.55	
Mounds: H. Shultz	97.50		Troy Bethel	44.16		Central, Mineral Springs: G. Bachus	72.10	
Mt. Hebron	14.87		West Side, Hope: C. Nash	179.93	36.17	Chapel Hill: V. Rettmann		
New Friendship: J. McCollum	44.30	35.50	Total	\$27,783.74	\$1,258.84	Columbus	20.76	
New Hope: K. Morgan	15.00		INDEPENDENCE					
New Liberty	20.00		Batesville 1st: J. Holston	\$2,494.45	\$14.82	De Queen 1st: E. Abington	1,922.43	206.02
Nutts Chapel: J. Moore	38.00		Calvary, Batesville: R. Bone	592.07	187.87	Dierks: J. Landers	30.00	16.75
Oak Grove: L. Bunch	73.78		Cord: R. McLeod	26.60		Foreman	99.54	27.00
Paragould 1st: J. Yates	8,530.14	66.00	Cushman: B. Cartwright	5.30		Hicks: R. Boston	10.00	
Pleasant Valley: O. Sutterfield		9.00	Desha: E. Haley	56.46		Horatio: R. Armer		15.30
Robbs Chapel: C. Moses	50.00	25.55	Floral	353.22		Kern Heights: D. Clay		
Rock Hill			Marcella: B. Yount	36.33		Liberty		
Spring Grove: K. Morgan			Mt. Zion: D. Cook	43.00		Little River: C. Woods	5.00	
Stanford		14.05	Pfeifer: B. Cartwright	25.88	12.57	Lockesburg: A. Kerr	41.04	
Stonewall: C. Abanathy	18.50		Pilgrims Rest: J. Bean	75.89		Lone Oak: J. Friday	17.58	
Third Avenue, Paragould	33.90	5.00	Pleasant Plains	8.00		Mt. Moriah	2.00	
Unity: A. Psalmonds	45.00		Rehobeth: W. Bunch	28.81		Murfreesboro: T. Carroll	193.07	116.00
Village: C. Mayberry			Rosie: R. McLeod	115.68		Nashville: M. Carozza	2,155.66	31.68
Vines Chapel: G. McGhehey	6.75		Ruddell Hill: F. Westmoreland	86.01		New Home: R. Boston		
Walcott: O. Wright	352.19		Salado: E. Stacks	10.00		Oak Grove: D. Reed	39.00	9.89
Walls Chapel: H. Clements	13.20		Sulphur Rock: A. Pate	20.00		Ogden	37.50	
West View: G. Whitney	167.71		West Batesville: L. Riherd	1,039.38	80.65	Ozan: B. Osborn		
Total	\$5,845.56	\$300.00	White River: B. Goyne	10.00		Rock Hill: C. Zachry	9.99	
HARMONY			LIBERTY					
Alzheimer: W. Smith	\$459.30	\$28.60	Buena Vista: J. Hogan			State Line		
Anderson Chapel: J. Robbins	10.00		Caledonia: D. Shirey			Washington: J. Hickman	54.10	
Centennial, Pine Bluff: L. Eaker		23.62	Calion: C. McCollum	\$92.47		Wilton: B. Robinson	50.00	
Central, Pine Bluff: G. Estes	120.79	14.00	Calvary, El Dorado: J. Burns			Winthrop: E. Jewel	24.99	
Dollarway: R. Rogers	56.07		Camden 1st	5,248.68	113.33	Total	\$5,482.94	\$431.09
Douglas: B. Smith	82.92		Camden 2nd: W. Rogers	314.46	30.00	MISSISSIPPI		
Dumas 1st: M. Cole	1,500.00	355.71	Chidester: E. Coleman	70.85		Armored: W. Clayton	\$120.95	
Forrest Park, Pine Bluff: G. Smith		156.00	Cross Roads: J. Hargett	306.61		Blackwater: D. Kinder		
Gould: D. Wright	261.63	144.01	Cullendale 1st: R. Parker	1,711.21	33.31	Blytheville 1st: C. Pitts	5,628.82	632.48
Grady: D. Dobson			East Main, El Dorado: R. McMurry	1,144.01	175.60	Brinkley's Chapel: E. Ray	43.89	
Greenlee Memorial		36.57	Ebenezer: J. Burton	301.06	32.00	Brown's Chapel: L. Hinch	62.45	
Hardin: M. May	106.07		El Dorado 1st: W. Warmath	9,724.36	4,124.05	Calvary, Blytheville: H. Ray	266.46	21.70
Hickory Grove: J. Ray	24.00	20.64	El Dorado 2nd: L. Webb	1,825.15	294.99	Calvary, Osceola: J. Moon	472.85	
Humphrey: L. Jolly	410.89	78.67	Elliott: D. Moore	870.01	74.98	Carson Lake: J. Davis	7.50	
Immanuel, Pine Bluff: J. Harrison	2,173.50	44.00	Felsenthal: J. Smith	52.00	76.00	Central, Dyess: D. Hughes	37.85	14.96
Kingsland: O. Wehunt			Gallee: D. Ray	97.65	38.00	Clear Lake: W. Ward	207.50	29.80
Lee Memorial: G. Taylor	553.37	12.10	Grace, Camden: D. Creech	74.95		Cole Ridge: M. McGuire	105.00	
Linwood: G. Johnson	85.73		Harmony: C. Crowe	10.73	5.00	Cross Roads: B. Holcomb	35.39	
Matthews Memorial: V. Dutton	605.79		Hillside, Camden: H. Voegelé	111.00		Dell: H. Sadler	92.66	48.71
New Bethel: M. McClellan	28.42		Huttig: B. Murphy	423.40	31.50	Emmanuel, Blytheville: V. Fowler	62.53	
Oak Grove: G. Autrey	140.80		Immanuel, El Dorado: D. Railey	4,691.11	1,066.78	Etowah: B. Wiles	39.72	
Oakland, Pine Bluff: E. Gray	7.00		Joyce City: T. Newton	777.22	5.00	Fairview: R. King	73.93	
Pine Bluff 1st: R. Smith	7,207.16	3,478.45	Junction City: H. Fuller	835.27	139.00	Gosnell: W. Kreis		40.26
Pine Bluff 2nd: G. Pirtle	499.83	41.26	Knowles: H. Diffie			Joiner: L. Baldwin	81.50	21.90
Pine Bluff 3rd: H. Haltom	52.00	40.08	Lapile: D. Linkous	40.00		Keiser: R. Bragg	144.20	4.00
Plum Bayou: J. Batson			Lawson: D. Travis	45.31	29.00	Leachville: G. Hadley	855.00	
Rankin Chapel			Liberty: C. Johnson	61.34	11.00	Leachville 2nd: C. Smith	21.07	
Rison: P. Beach	632.92		Louann	55.26		Luxora: C. Johnson	205.50	113.77
South Side, Pine Bluff: B. Elrod	3,915.00	155.40	Maple Avenue, Smackover: L. Clarke	673.64	10.50	Manila 1st: E. Pipkins	540.21	
Star City: P. Titaworth	1,065.72	187.90	Marrable Hill, El Dorado: E. Glover	379.85	90.18	Mary's Chapel: C. Reid	12.51	
Sulphur Springs: P. Pearson	150.17		Memorial	10.73		New Bethel: B. Moon		
Wabbaseka: H. Wilson	25.92		Midway: F. Taylor	85.98		New Harmony: Z. Gragg	13.73	
Watson Chapel: M. Smith	203.36		New London: E. Murphy	1,580.77	310.75	New Liberty: J. Marlar	150.00	81.58
Yorktown: M. Weeks	60.00	10.00	Norphlet: R. Smith			New Providence: C. Lindsey	203.02	
Cornerstone Mission: J. Kilburn	23.51		Park View, El Dorado: J. Tolleson	930.28	296.71	Nodena: R. Johnson	45.00	
Moore Chapel			Philadelphia: C. Hale	24.00		Number Nine: J. Miller	14.48	
Total	\$20,461.92	4,826.96	Salem: J. Luck	30.00		Osceola 1st: H. Jacobs	2,123.42	242.00
HOPE			MT. ZION					
Anderson: K. Tingle	\$99.22	\$3.20	Shuler: C. Ainsworth	8.35		Alsop: G. Whitmire	\$12.59	
Antioch: W. Nall			Smackover: B. McCrary	1,541.20	855.15	Bay: H. Gallop	131.62	\$20.22
Arabella Heights, Texarkana: L. Jordan		21.89	Snow Hill: J. Lindsey			Bethabara: J. Kinkade		
Beech Street, Texarkana: C. Rue	7,101.03	228.14	South Side, El Dorado: W. Miller	276.14	80.31	Black Oak: J. Collier	107.29	
Bradley: J. Powell	353.59	10.00	Stephens: H. Cantrell	1,346.17	223.29	Bono: J. Sparks	54.15	
Bronway Heights, Texarkana: J. Peterson			Strong: S. Williamson	704.62	216.00	Bowman: C. Berry	63.32	
Calvary, Hope: J. Passmore	427.06		Temple, Camden: L. Lasater	521.17		Brookland: L. Thompson	54.00	14.77
Calvary, Texarkana: R. Cook	1,200.94	41.00	Temple, El Dorado: C. Baskin	221.66	29.10	Buffalo Chapel: L. Perkins		
Canfield	45.00		Three Creeks: G. Williams	123.59	48.14	Caraway: B. Adams	38.75	
Central, Magnolia: L. Hunnicutt	7,288.55	122.57	Trinity: D. Moore	1,079.56	53.38	Cash: E. Langley	38.31	
Doddridge	30.00		Union: H. Evans	430.98	86.06	Central, Jonesboro: C. Mathis	1,865.88	337.
Eastview, Texarkana: C. Phillips	226.45		Urbana: G. Fletcher	13.12	55.08	Childress: E. Webb	200.75	148.8
Fouke 1st: J. Young	10.82	36.16	Village: E. Moore	290.49	39.50	Dixie: A. Simpson	76.33	
Fulton: J. McClanahan		18.00	Wesson: C. Duke	122.15		Egypt: E. Tosh	41.35	
Garland: H. Wood			West Side, El Dorado: P. Myers	1,012.15	20.00	Fisher Street, Jonesboro: H. Robertson	354.28	145.08
Genoa: J. Ingram	8.21		White City: H. Hansbro	37.60		Friendly Hope: J. Wilkinson	86.33	22.44
Guernsey: K. Dickson			Rendezvous Mission	20.00		Jonesboro 1st: C. Holland	4,399.98	514.45
Haley Lake: A. Hughes			Total	\$40,340.36	\$8,725.69	Lake City: J. Basinger	911.63	458.96
Harmony Grove: G. Spearman		12.00	LITTLE RED RIVER					
Hickory Street, Texarkana	395.66		Brownsville	\$15.00		Lunsford: L. Rogers	74.91	5.50
Hope 1st: J. McClanahan	5,750.70	31.44	Concord: N. Wiles	43.08				
Immanuel, Hope: E. Hughes		1.60	Heber Springs 1st: R. Nelson	431.79	\$50.81			
Immanuel, Magnolia: H. Williams		25.67	Lone Star: R. Davis	17.45				
Immanuel, Texarkana: W. Garner	778.98	184.36	Mt. Zion: R. Bailey					
Lewisville 1st: J. Clack	1,115.40	1.94	New Bethel: O. Yount					
Macedonia No. 1: H. Burris	22.30		Palestine: J. Eason	15.00				
Macedonia No. 2: F. Worley	18.75	16.07	Pleasant Ridge: R. Davis	5.00				
Mandeville: E. Croxton		11.82						

Churches and Pastors	Cooperative Program	Designated	Churches and Pastors	Cooperative Program	Designated	Churches and Pastors	Cooperative Program	Designated
Monette: J. Sanders	249.69	25.00	North Little Rock 1st: J. Myers	1,686.62	54.44	Half Moon: L. Nixon		6.88
Mt. Pisgah: M. Lynn	47.95		North Point: R. Smith	74.93	6.75	Leslie: R. Tweed	149.58	52.50
Mt. Zion: L. Patterson	146.01		Park Hill: R. South	5,189.36	163.10	Lexington: J. Hays		23.08
Needham: J. Childress			Pike Avenue: R. Dorris	600.00	61.02	Marshall: K. Hargis	193.65	59.22
Nettleton: R. Harrington	849.16	32.34	Pine Grove: J. Hogan	271.14	85.01	Marshall: K. Hargis	193.65	59.22
New Antioch: B. Knight	11.18		Plainview: C. Griffith	371.40	7.85	Mountain View: A. Corder	243.90	
New Hope, Black Oak: W. Foster	26.81		Pleasant Grove: A. Chenault	88.00		New Hopewell	31.95	
New Hope, Jonesboro: M. Taylor	31.73		Pulaski Heights, Little Rock: W. Hicks	9,327.62	364.96	Pee Dee: A. Emberton		
North Main, Jonesboro: R. Williams	116.87		Remount: T. Reaves	173.67	5.00	Plant: G. Williams	30.00	
Philadelphia: P. Stockemer	357.39		Reynolds Memorial: G. Wilson	360.00		Pleasant Valley: G. Williams	6.00	
Providence: E. Ragsdale	13.00		Riverside, Little Rock: M. Mintz	208.98		Red Hill: R. Caldwell	9.00	
Red			Roland: E. Boyles	9.00		Rupert: C. Gregg	7.50	
Rowe's Chapel: J. Hester	37.28		Rosedale: G. Rowe	34.81	5.00	St. Joe	22.57	
Strawfloor: A. Watkins	36.14		Shady Grove: W. Adkins	72.45		Scotland: F. Wright	35.10	
Walnut Street, Jonesboro: D. Cranford	1,364.91	244.35	Sheridan 1st: W. Welch	166.61		Shady Grove: C. Gregg	9.02	
Wood Spring			Sherwood	216.76		Shirley: H. Ballentine	52.48	11.75
Total	\$11,297.99	\$1,964.87	Sixteenth Street, No. Little Rock: E. McElroy			Snowball: J. Evans	42.50	
			South Highland: R. Branscum	1,969.61	50	Zion	30.00	
NEWTON			Stanfill: W. Carter	6.00		Zion's Light, Duff		
Boxley: C. Taylor	\$30.00		Sylvan Hills: W. Hill	1,997.90	34.11	Total	\$1,996.78	\$238.77
Cassville	22.41		Trinity: H. Clower	26.03				
Deer: G. Merriman	15.00		Tyler Street, Little Rock: H. Hightower	1,345.81	215.66	TRI COUNTY		
Jasper: G. Merriman	45.21		University, Little Rock	144.09	64.45	Antioch	\$17.08	
Parthenon: G. Merriman	48.46		Vimy Ridge: W. Ford	6.00		Barton Chapel: J. Deaton		
Total	\$161.08		Welch Street, Little Rock: C. Atkinson			Becksbur: V. Bradley	127.80	
			West Side, Little Rock: G. Davis	191.84		Bethel: R. Archer		
OUACHITA			Woodland, Little Rock: H. Grigson	388.03	15.86	Burnt Cane: F. Stamps		
Acorn	\$84.42	\$16.16	Woodson: A. Cullum	81.81		Calvary, West Memphis: W. Sawyer	60.00	
Bethel			Zion Hill: E. Dicus	44.43		Cherry Valley: J. Love	149.93	\$57.25
Board Camp: H. Shreve	117.68	5.00	Berea Chapel			Colt: C. Tyson	36.64	
Cherry Hill: S. Sherman	62.49		McKay Mission	72.38		Crawfordsville: B. Rowell	158.40	
Concord	16.17		Total	\$74,009.91	\$9,546.96	Earle: H. Bradley	1,766.48	136.00
Cove: D. Goodman	33.26	10.00				Ellis Chapel: H. Perry		
Dallas Avenue, Mena: C. Hughes	269.37		Anchor: R. Watson	\$134.25		Emmanuel, Forrest City		21.91
Gillham: E. Riley	70.65		Antoine: F. Lowe	65.64		Fair Oaks: W. O'Daniel	150.75	
Grannis: J. Westlake	114.31	51.15	Arkadelphia 1st: S. Reeves	3,090.16	498.94	Fitzgerald Crossing: L. Reeves	50.00	
Hatfield	64.97	4.00	Arkadelphia 2nd: C. Kluck	1,314.29	101.36	Forrest City 1st: S. Gash	2,760.52	18.95
Hatton	30.00		Beech Street, Gurdon: J. Wilson	1,196.22	160.98	Forrest City 2nd: E. Harvey		
Lower Big Fork: H. Green			Beirne: E. Hawkins	151.72	105.13	Fortune: J. Yarbrough	7.50	
Mena 1st: D. Miller	1,999.89	12.50	Bethel: N. Bryan	29.17		Gladden: C. Seocy		
New Hope, Shady: E. Sherman	47.34	5.00	Bethlehem: W. Givins	10.00		Goodwin: J. Green	68.76	
Salem	9.00		Boughton: D. McBride	44.20		Harris Chapel: D. Worsley	100.00	
Two Mile: M. Roberts			Caddo Valley: A. Coad	14.50		Hubert: F. Stamps	47.90	
Vandervoort: P. Petty	55.22		Cedar Grove: A. Anderson	15.00		Hydrick	6.00	
Westmoreland Heights, Mena: T. Dove	6.40	6.50	Center Point: G. Branscum	18.26	25.23	Ingram Boulevard, West Memphis: B. Eldridge	143.94	68.40
Wickes			Curtis: O. Ring	55.54	15.00	Jericho: J. Tinesley		
Yocana: D. Hillier	13.75		DeGray: E. Turner	101.14		Madison: J. Webb	25.00	
Calvary Mission: O. Mills	32.00		East Whelen: J. Barfield	12.00		Mary: F. Savage	388.74	109.71
Midway Mission	12.59		Emmett: H. Malone	4.00		Mays Chapel: V. Stewart		
Total	\$3,044.51	\$110.31	Fairview: M. Schleuter	52.58		Mt. Pisgah: K. Johnson		
			Harmony Hill: W. Landers	52.58		Palestine	22.00	
PULASKI			Hollywood: R. Wooderson	15.79		Parkin: R. Langley	519.93	250.00
Alexander: J. Lewis	\$198.99	\$5.41	Lakeview: G. Dickens	16.65		Pine Tree	6.00	
Amboy: A. Teel	1,764.64	174.12	Marlbrook: B. Alexander	23.82		Riverside: P. Quinn	6.00	
Archview: J. O' Cain	190.20		Mt. Bethel	45.00		Shell Lake	7.00	
Baptist Tabernacle: D. Hook	1,668.50	43.55	Mt. Olive: E. Bearce			Tilton		
Baring Cross: K. Pitt	4,749.10	180.23	Mt. Zion: B. Uth	21.00		Togo: C. Downs	43.02	
Barnett Memorial: C. Trammell	15.00	9.44	Okolona	19.68		Turrell: A. White	115.58	25.00
Bayou Meto: E. Irby	129.34	11.45	Park Hill, Arkadelphia: S. Cooper	96.25	8.00	Vanndale: G. Minton	60.18	
Bethany: A. Suskey	267.37	91.87	Prescott 1st: W. Woodell	175.00	52.22	West Memphis 1st	2,609.37	220.70
Bethel: H. Taylor	205.88	17.00	Reader: E. Whitten	23.50		West Memphis 2nd: W. Burke	36.47	
Calvary, Little Rock: P. Fox	1,898.02	500.00	Richwoods: H. Shirley	204.69	7.25	Wheatley: C. Faucett	20.32	23.00
Calvary, Rose City: W. Philliber	796.92	77.49	Shady Grove: B. Connis	3.00		Widener: J. Gilbreath	31.27	
Capitol Hill: C. Maynard	64.19	34.10	Shiloh: F. Schimming	39.00	13.16	Wynne 1st: R. Crofts	1,927.07	312.20
Cedar Heights, No. Little Rock: H. Blanton	11.53		South Fork: J. Davis	9.00	5.00	Midway Mission	32.47	
Central, No. Little Rock: C. Bayless	1,391.30	97.26	Sycamore Grove: F. Vanlandingham	17.25		Wynne Chapel: C. Cauby	247.75	10.23
Crystal Hill, Little Rock: R. Raines	192.89		Third Street, Arkadelphia: G. Blackmon	14.35	5.00	Total	\$11,730.78	1,253.44
Crystal Valley: E. Goodson			Unity: J. Ryan	59.88		TRINITY		
Douglasville: F. Davis			Whelen Springs: F. Cowardin	34.63		Anderson Tulley: J. Tallant		
East End, Hensley: M. Grubbs	204.73		Faith Mission			Bethel, Harrisburg	6.00	
Estes Chapel: K. Robinson			Total	\$7,127.24	\$997.27	Black Oak: T. Ray		
Forest Highlands, Little Rock: D. Ross		50.26				Calvary, Harrisburg: C. Caery	128.96	35.80
Forty Seventh Street, No. Little Rock: N. Greenleaf			ROCKY BAYOU			Corners Chapel: H. Tipton	37.50	
Gaines Street, Little Rock: J. Perkins	2,248.28	33.75	Belview	\$30.00		East Side, Trumann: M. McDonough	12.72	
Garden Homes: H. Lewis			Boswell: F. Woolery	9.00		Faith, Tulot: J. Orr		9.00
Geyer Springs		66.31	Calico Rock: J. Russell	41.18		Fisher: J. Coleman	70.07	21.48
Grace: F. Deahl	218.79	96.53	Evening Shade: S. Bittle	37.01		Freer: T. Hitt		
Gravel Ridge: J. Livingston	230.64		Finley Creek	18.00	1.90	Greenfield: E. Duncan	114.96	38.85
Graves Memorial: A. Kendrick	95.97		Franklin			Harrisburg 1st: C. McClain	1,510.09	128.87
Green Memorial: C. Sewell	237.60	34.30	Guion: G. Roberts	12.00		Hurd's Chapel		
Harmony: J. Hogue			Lone Star			Lebanon: L. Bunch	31.80	
Hebron: J. Whitley	454.16	8.50	Melbourne: H. Cooper	180.00		Lepanto: J. Campbell	606.93	70.83
Highway, No. Little Rock: B. Wallace	334.18	93.73	Mt. Pleasant: G. Roberts	15.00		Maple Grove: F. Bufford	7.50	
Hilltop, Cabot	15.00		Myron: J. Grimes	10.00		Marked Tree: C. Sawyers	978.34	34.25
Holly Springs: H. Hogg	84.31	8.00	Newburg			Neal's Chapel: J. Hodges	81.00	
Inmanuel, Little Rock: W. Vaughn	7,997.19	2,607.94	Oxford	15.00		Neiswander: B. Barnett		
Ironton: E. Edmondson	50.00	6.00	Sage: F. Shell	57.80		Pleasant Grove: A. Houston	164.81	
Jacksonville 1st: B. Bates	2,774.49	73.14	Sidney: R. McDowell	32.92	1.82	Pleasant Hill: A. Houston	30.95	
Jacksonville 2nd: A. Upchurch	841.58		Wiseman			Pleasant Valley: S. Meador	15.74	
Levy: W. Hunt	1,633.58		Zion Hill: R. McDowell			Red Oak: L. Vandiver	24.00	
Life Line: L. Foster	1,528.29	195.40	Dolph Mission: J. Skaggs	9.00		Riverview: R. Anderson		
Little Rock 1st: P. Roberts	7,936.29	1,119.48	Total	\$466.91	\$3.22	Shiloh: E. Johnston		
Little Rock 2nd: D. Cowling	7,561.76	2,766.29				Spear Lake: H. Robinson		
Longview: C. Lawrence	701.76		STONE-VAN BUREN-SEARCY			Trumann 1st: H. Brown	489.61	67.71
Markham Street: E. Dance	180.00		Alco: F. Rodgers	\$20.34		Tyronza 1: E. Edwards	718.43	
Martindale: A. McCurry	290.37		Botkinburg: A. Bonds	9.00		Valley View: J. Garner	87.08	
Mountain View: T. Cupples			Clinton: J. Wofford	1,065.50	\$108.92	Waldenburg: B. Wright	29.20	
Nalls Memorial: C. Whedbee	130.00		Corinth: J. Hayes	15.61		Weiner: M. Wright	70.13	30.32
Natural Steps: M. Young	81.88		Evening Shade: C. Harness			West Ridge: J. Brock		
						McCormick Mission: R. Craig		
						Ridgeview Mission: C. Barnett		
						Total	\$5,165.82	\$437.11
						WASHINGTON-MADISON		
						Berry Street, Springdale: A. Kindred	\$247.39	\$25.75
						Bethel Heights, Fayetteville: J. Teas	32.00	3.00
						Black Oak: E. Wright	27.00	

Brush Creek: R. Keeser	49.42	---
Caudle Avenue, Springdale:	---	---
J. Porter	424.41	---
Elkins	4.00	---
Elmdale Chapel: W. Barnett	232.85	---
Farrington: F. Spencer	145.09	32.10
Fayetteville 1st: A. Hall	2,770.04	409.11
Fayetteville 2nd: E. Logue	50.00	---
Friendship: L. Brown	27.38	---
Hindsville: B. Dove	21.25	---
Huntsville: C. Nelson	207.98	27.11
Immanuel, Fayetteville:	---	---
T. Gordon	321.55	9.00
Johnson	107.25	9.00
Liberty, Dutch Mills:	---	---
F. Baumgardner	151.62	17.75
Lincoln: J. Powers	336.08	72.33
New Hope: W. Davis	10.00	---
Ogden: E. Turner	3.18	1.45
Prairie Grove: D. Jones	33.00	18.02
Providence: W. Jessor	314.11	152.93
Ridgeview	35.50	---
Sonora: O. Long	10.00	---
Southside, Fayetteville:	---	---
N. Drake	15.00	---
Springdale 1st: B. Miley	4,210.36	39.24
Spring Valley: D. Alderson	98.97	---
Sulphur City: F. Maddox	57.11	---
University, Fayetteville:	---	---
W. Johnson	481.38	91.95
West Fork: J. Allen	15.00	---
Winslow: B. Massey	215.79	---
Total	\$10,654.61	\$908.74

WHITE COUNTY

Antioch: V. Johnson	\$25.00	---
Beebe 1st: R. Howard	200.00	---
Bethany, Georgetown: H. Owens	18.00	---
Central, Bald Knog: M. Wilfong	437.09	\$42.23
Crosby: J. Pruitt	37.50	---
El Paso: E. Anderson	54.00	12.00
Griffithville: W. Baker	---	16.25
Higginson: R. McElroy	18.10	---
Judsonia: W. Burnett	500.00	49.35
Kensett: C. Bryant	218.20	45.46
Liberty: C. Squires	---	---
McRae: H. Boyd	15.00	---
Midway: J. Moody	15.00	---
Morrow: W. Black	30.48	---
Mt. Hebron: M. Hill	22.50	---
Mt. Sidon	---	---
Pangburn: L. McDoughe	20.00	18.55
Pleasant Valley	15.00	---
Rocky Point: H. Nettles	12.00	---
Rose Bud: T. Davis	30.00	13.50
Royal Hill: J. Pruitt	10.00	---
Searcy 1st: W. Sewell	4,024.30	139.05
Searcy 2nd	90.00	12.50
Smyrna: E. Simmons	---	---
Union Valley: V. Johnson	24.00	---
West Point: D. Hughes	---	---
Total	\$5,816.17	\$348.89

WHITE RIVER

Antioch No. 1: T. Melton	\$28.59	---
Cotter 1st: J. Finn	225.70	\$121.46
East Cotter: T. Melton	23.76	---
East Oakland: H. Messick	---	---
East Side, Mountain Home:	---	---
O. Ford	139.41	---
Flippin: H. King	175.00	141.00
Gassville: O. McCracken	29.05	---
Hopewell: S. Wilkerson	---	---
Mountain Home: H. Elmore	786.31	183.71
New Hope: R. Dunn	19.50	---
Norfolk 1st: B. Ford	31.50	4.00
Oak Grove: J. Duncan	6.00	---
Pilgrims Rest: J. Huddleston	36.00	---
Pleasant Hill: G. Hicks	78.75	---
Whiteville: O. McCracken	45.06	7.57
Yellville: D. Garrett	188.39	---
Hill Top Mission	22.41	5.15
Lakeview Mission	7.77	---
Midway Chapel: S. Griffin	12.16	58.41
N. Tomahawk Mission	22.97	---
Peel Mission	9.50	---
Promise Land Mission	---	---
Summit Mission	8.26	---
Welcome Ridge Mission	4.24	---
Miscellaneous	17.66	---
Total	\$1,917.99	\$521.30

WOODRUFF

Augusta 1st: T. Lindley	\$817.60	---
Cotton Plant 1st: I. Prince	300.00	\$8.00
Good Hope: H. Wright	10.00	5.27
Gregory: H. Cato	20.00	---
Hunter	141.07	---
McCroxy: C. Evans	153.76	---
Morton: J. Maynard	20.91	5.85
Patterson: E. Long	7.97	---
Pleasant Grove: R. Gean	32.53	13.00
Raynor Grove: W. Guffey	---	---
Tupelo: O. Burnett	12.84	13.00
White Lake: L. Bankster	---	---
Augusta Mission	---	---
Total	\$1,516.68	\$45.12
Miscellaneous —	---	---
Churches not belonging to local associations—	---	---
Broadmoor: W. Pruden	---	---
Total	---	---
Miscellaneous Contributions	\$5.78	\$8,815.18
Total	\$5.78	\$8,815.18
Grand Total	\$404,188.75	\$54,746.10

Baptist pastors honored

FOUR Southern Baptists were among 13 recognized as rural ministers of the year in their states. Selections are made annually from 13 Southern states by Progressive Farmer magazine and the school of theology of Emory University, Atlanta.

Southern Baptists honored were Ralph Z. Mullins, Greenville, Ala.; Arthur T. Achord, Grant Parish, La.; Paul McCullough, Watonga, Okla., and R. C. Woodham, Hattiesburg, Miss.

The ministers are judged on leadership of their churches and effectiveness in community. (BP)

CHURCH PEWS



At
A
Price

Any Church Can Afford
WAGONER BROTHERS
MANUFACTURING CO.

Write or Call
Phone 246
BOONEVILLE, ARKANSAS



WHEN AMERICA SPEAKS WHO WILL LISTEN?

To be a world influence culturally, spiritually and scientifically requires that our future citizens be well educated.

Yet even now many of our colleges are overcrowded. And in ten years applications are expected to double because of our growing population. Many top-notch college teachers are leaving the campus for higher paying jobs in industry and business.

You can help correct this situation.

Give generously to the college of your choice.

Learn more about our current college crisis. Write for your free booklet, "OPEN WIDE THE COLLEGE DOOR," Box 36, Times Square Station, New York 36, N.Y.



TURNERY WOOD PRODUCTS, INC.
Fine Church Furniture

HARRISON, ARKANSAS
P.O. BOX 309

Return Postage Guaranteed

ARKANSAS BAPTIST
401 West Capitol
Little Rock, Ark.