

RESERVE



1971 Ouachitonia

Ouachita Baptist University
Arkadelphia, Arkansas
Volume 62
Nita Murray and Tommy
Chaffin, Editors



1971 Ouachitonian

Contents:
Student life 16
Studies 60
Groups 102
Competition 152
Faces 192
Ads-index 244





A person's life;
the life of an institution;
the events of a year,
if recounted effectively
become something more than real,
something more than words,
something permanent.
Something called
communication.





Communication . . .
a strange symbol
for the meaningful exchange
of symbols.
A medium of touch beyond
the perception of perception.
Written symbols, spoken symbols,
perceptual symbols . . .
are only that: Symbols:
Communication goes beyond.







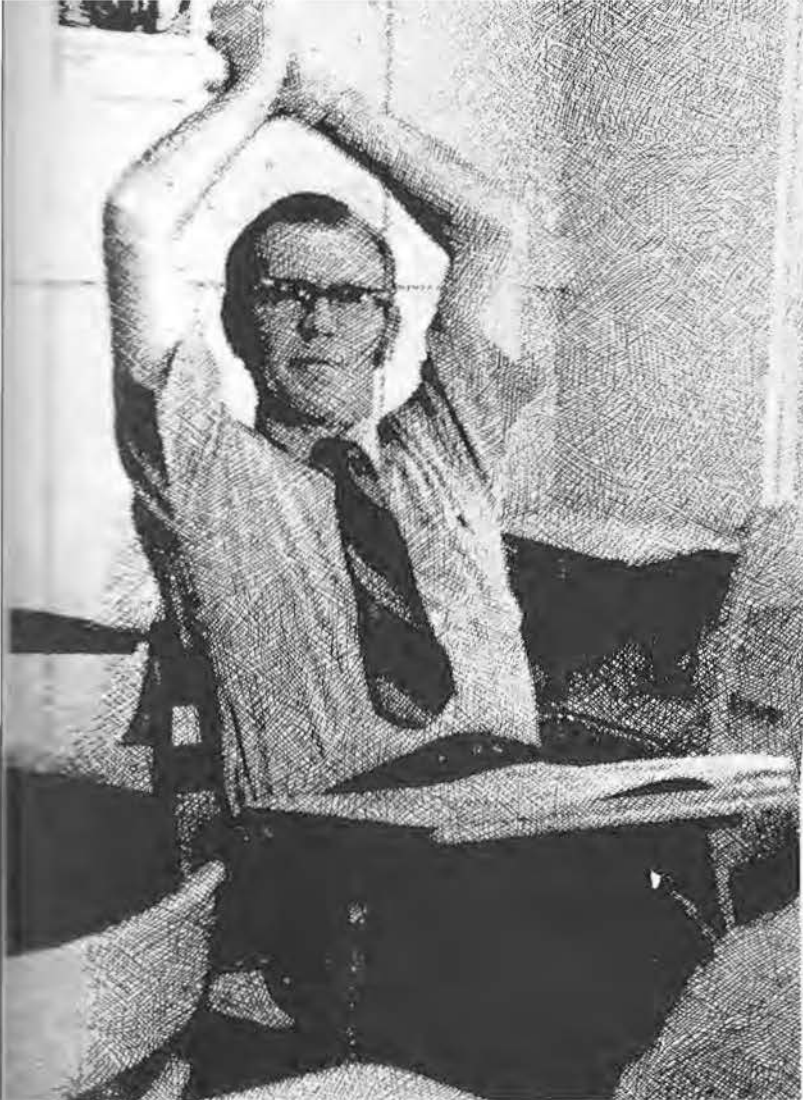
Communication . . .
is touching, feeling
sensing.
Is Déjà Vu.
Is knowing,
or perhaps something
a little beyond
the periphery of knowing.

Communication . . .
of meaningful experiences
within the train
of individual lives.
Sometimes it is the sharing
of experience,
sometimes it is experience
and sometimes something else.









Communication . . .
is knowledge,
whether gained in classes,
from books,
or from others.
And occasionally
communication is
wisdom.



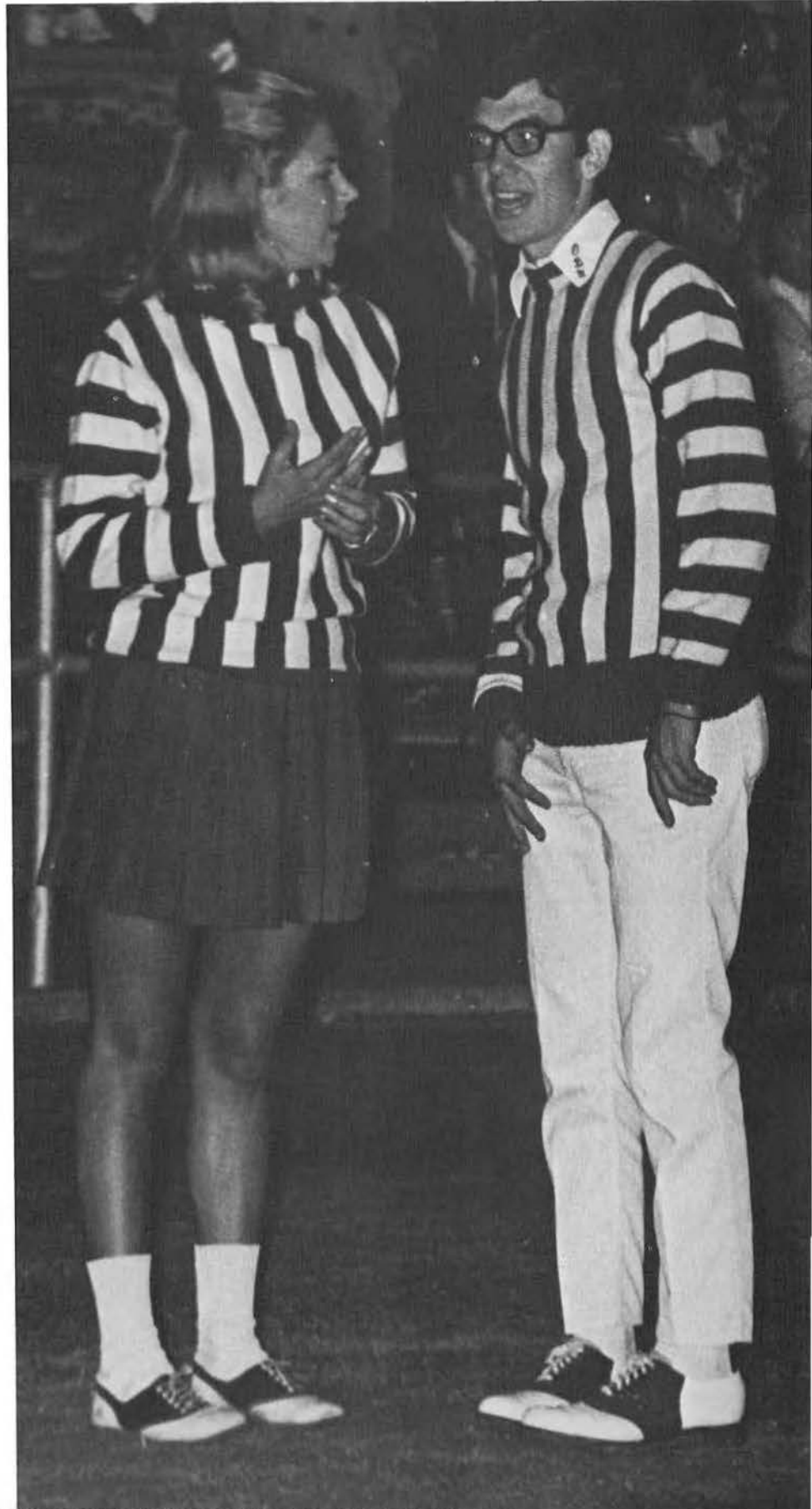




Communication . . .
is being sensitive.
Is seeing that quality
in another,
in an event,
in a work of art
that makes it both
individual and common.



Communication . . .
is a reaching out
is seeking
for answers
for questions
for meaning in a universe
which is sometimes cold
sometimes warm
and often absurd

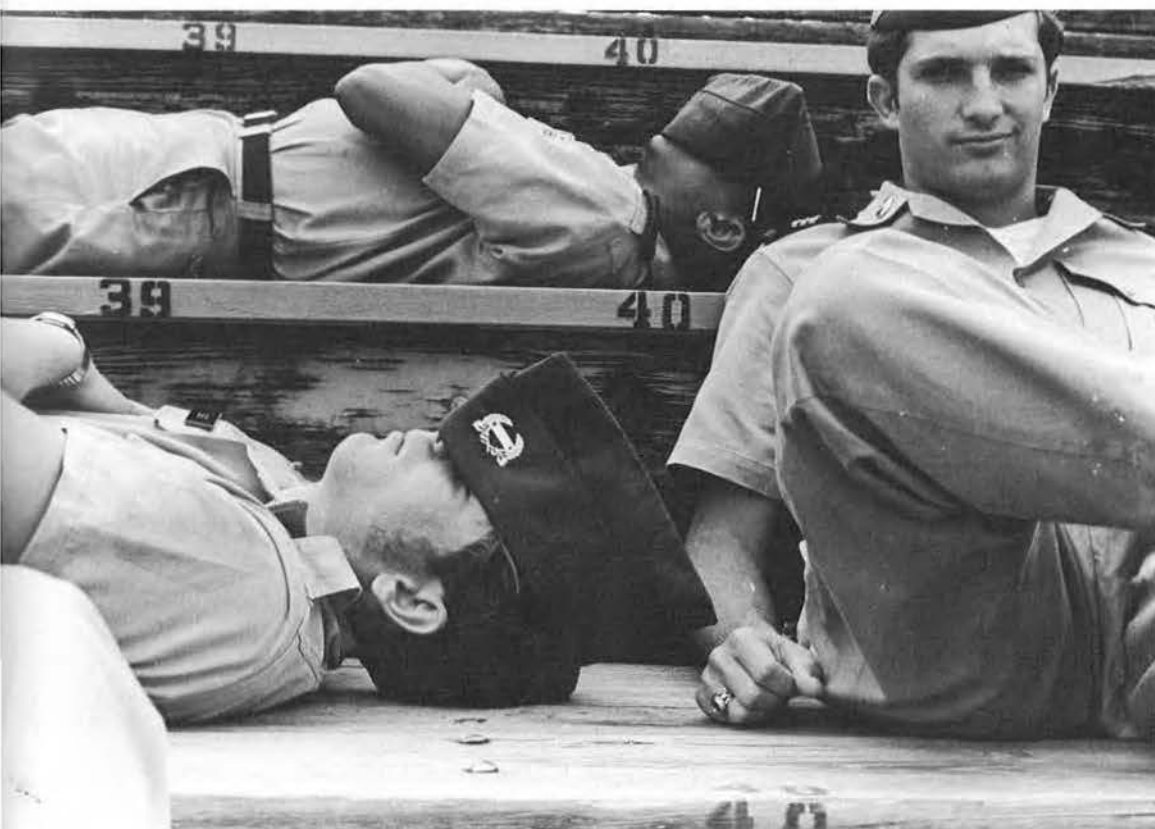
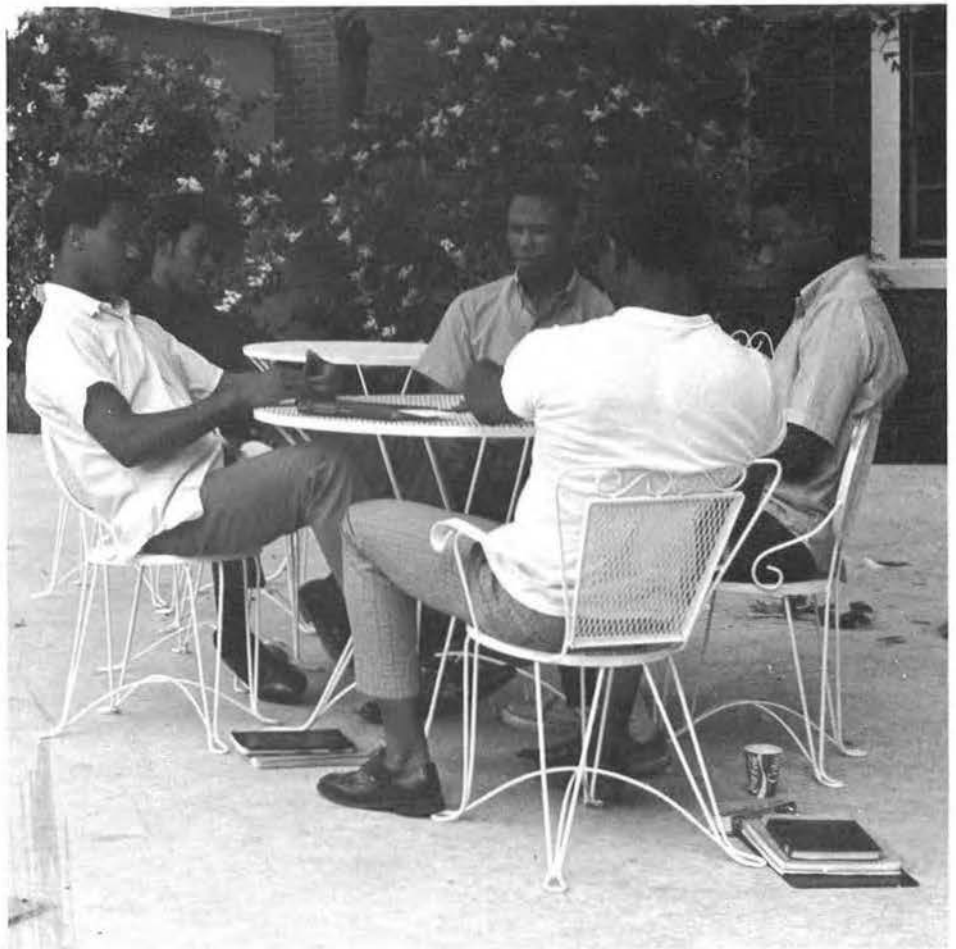






Communication . . .
is a journey inward
as well as outward.
Communication is relating
and, above all,
being.
Communication is life.







Student Life



Fall/Spring registration

Students, faculty members and administrators all encountered a variety of communication problems during registration. Long lines, class schedules, degree plans and tired feet added up to a feeling of relief when registration was over.

Improvements in spring registration procedure eliminated many hassles. The long outside line of the first day was eliminated on the second, and the return of the faculty to the library, while posing problems itself, provided an important element in the process—the element of personal touch and communication in registration.





OPPOSITE TOP: Degree plans and class schedules were cleared in the dean of academic's line. OPPOSITE BOTTOM: Fog and a fine drizzle dampened registrants' spirits on the first day of spring registration. TOP: Students check registration packets and class cards in the dean's line. BOTTOM: Dr. Vester Wolber checks discounts awarded to ministerial students.



Freshman orientation

To make someone feel wanted and needed is one of the hardest things to accomplish through communication, especially when the person is a college freshman.

The senior class did a marvelous job of making the freshman class feel welcome, wanted and needed during Freshman Orientation Week.

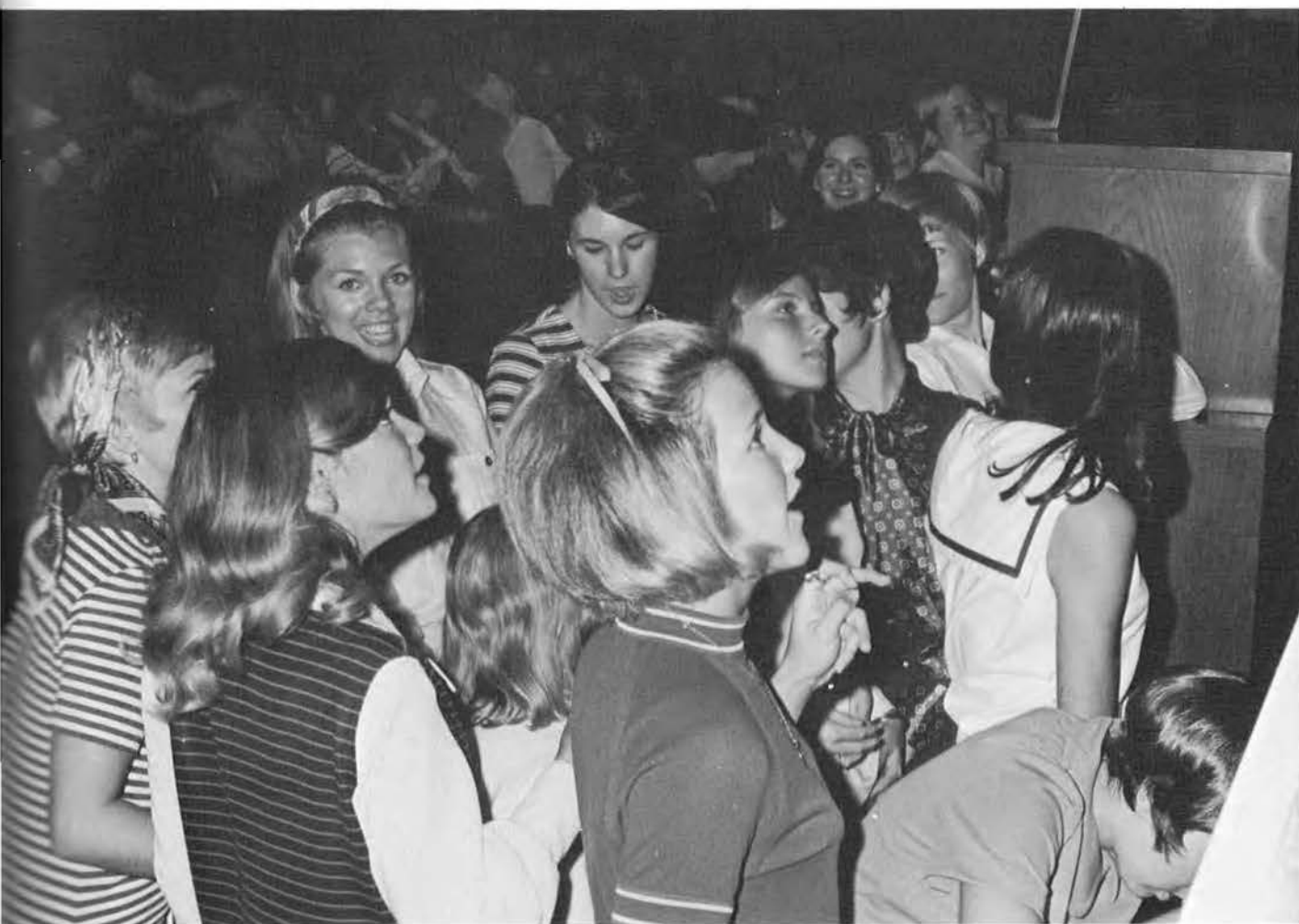
When the freshman class rolled out of their beds early in the morning to meet at the Tiger they knew there would be a host of seniors there also, helping them stay awake.

The Kangaroo Court was the highlight of Freshman Orientation Week. Sentences were handed down by some of the faculty members and the senior class.





OPPOSITE TOP: Senior Charlie Fortner (center) leads his group of sleepy freshmen in singing to the Tiger in the traditional pre-dawn orientation activities. OPPOSITE BOTTOM: Freshman Greg Greenway does penance for his improper respect for a senior by watering down the campus sidewalk while walking backwards. TOP: Kangaroo Court Justice Jim Berryman laid down the law to an offending freshman. BOTTOM: The entire second floor of Flippin Dormitory was sentenced in Kangaroo Court for mass insubordination.





Dorm life

Dormitory life provides students with a unique opportunity for communication with their peers.

In no other situation are so many people with such diversified backgrounds so closely united.

Dorm life enables students to fulfill one of the basic ideas of communication—to know and live with others on a personal basis—to know them as people.





OPPOSITE TOP: Steve Wenecke, David Proffit, Ronnie Hopper, and Tommy Amason take a break from homework in a game of Hearts. OPPOSITE BOTTOM: Jane McCallum finds that dormitory life, while enjoyable, is not all relaxation. TOP: Roy Cook takes advantage of quiet hours to complete assignments. BOTTOM: Bobbie Miller prepares a poster in the dorm lounge.



Off-campus life

Off-campus life for married students proved to be an "experiment in communication." The problems and pleasures of student life were both diminished and intensified by the necessity for extreme sensitivity to the needs, moods, and feelings of another human. Off-campus life gave many students their first taste of living on their own, with life in the real world.





OPPOSITE TOP: Lack of communication seemed to have been a factor as Grandy and Judy Royston iron out a problem. OPPOSITE BOTTOM: Bob and Rosemary Harris discuss plans for the weekend over lunch. TOP: Jim Brazil and wife encounter one of the disadvantages of eating at home. BOTTOM: Gene and Sarah Jines take a pretzel break from homework.



Ouachita Theatre

"Summer Tree" was the first play produced by the Ouachita Theatre in the fall semester. Staged in early September, its final curtain marked the immediate start of work on "Hamlet." Both plays were produced in Verser Drama Center under the direction of Dennis Holt Sr.

Raymond Caldwell, assistant professor of speech, directed "Nude With Violin." Presented in late February, the light comedy contrasted greatly with "Hamlet." It also set the mood for "An Enemy of the People," the Theatre's final production of the year.

The Children's Theatre, which is separate from the Ouachita Theatre, presented "Christmas Carol" in December. The name of the organization was misleading—many adults were in the audience for the production of the Dickens' classic.





OPPOSITE TOP: John Vandertholen played the conscience - stricken king in the Ouachita Theatre production of "Hamlet." OPPOSITE BOTTOM: John Vandertholen evades Jeannie McCulloch's tirade as Gene Vestal and Sherry Reynolds strike appropriate poses in a scene from "Nude With Violin." TOP: Glen McNeal speaks with the soldier in "Summer Tree." BOTTOM: Marley's chain - burdened host (Jim Kelley) plagues Scrooge (Tom Roberts) who contemplates the possible fate of Tiny Tim (Shannon Scott).



Twirp Week

Twirp Week was highlighted by the Sadie Hawkins Day festivities. Sponsored by Gamma Phi, Sadie Hawkins Day was set in the traditional Dog Patch style, which included all the traditional characters and live entertainment.

Other activities such as movies and parties gave the more enterprising coed many opportunities to catch her "victim" and pick up the tab.

Dad's Day marked the end of Twirp Week with a well-attended talent show and a Tiger football victory over Mississippi College before a packed stadium.





OPPOSITE TOP: Grandy Royston and David Tate teamed up to sing to the Twirp Week crowd enjoying Sadie Hawkins Day. OPPOSITE BOTTOM: Dog Patch sheriffs insured law and order at Sadie Hawkins. Here Pete Martin and Jack Case read an arrest warrant to David Easley. TOP: The kissing booth was among the more popular Sadie Hawkins attractions and Grandy Royston was another satisfied customer. BOTTOM: Richard Scifres, Jo Anne Smith, Jim Kelly and Liz Ann Wilson made up the quartet that entertained at the Sadie Hawkins Day festivities.



Homecoming activities

Homecoming activities involved more than a football clash between old rivals. Alumni from throughout the nation returned for a Ouachita weekend which was crammed with a variety of traditional homecoming events.

Activities emphasized to all concerned that communication between Ouachita and her students doesn't end with graduation but simply becomes more nostalgic.





OPPOSITE TOP: Seniors put finishing touches on their entry in the 1970 Homecoming parade competition. OPPOSITE BOTTOM: Torchlight marchers carry Reddie coffin through downtown streets in pregame parade. TOP: Cheerleaders add fuel to the homecoming spirit at a pregame bonfire. BOTTOM: Alumni register their attendance at 1970 Homecoming activities.



Homecoming activities





OPPOSITE TOP: The OBU Drill Team demonstrated drill techniques in the homecoming parade. OPPOSITE BOTTOM: The OBU Homecoming court watched the Tigers defeat the Arkansas Tech Wonder Boys 14-12. TOP: Amy Lowery accepted the Student Senate's first place trophy for EEE social club's entry in the 1970 Homecoming parade. BOTTOM: Tailback Johnnie Baker eluded a Tech tackler on a run around left end.



HOMECOMING QUEEN

Kathy Otwell

Sigma Alpha Sigma





ABOVE LEFT: Kathy is a senior secondary education major from Malvern. ABOVE RIGHT: Paul McNabb, Sigma Alpha Sigma president, escorted Kathy during pre-game ceremonies. LEFT: Kathy is congratulated by her Ouachita graduate sister, Mrs. Richard Scharder of Hope.



OPPOSITE TOP: Judee Thompson, third runner-up, sponsored by AOE's; OPPOSITE BOTTOM: Jo Anne Smith, fourth runner-up, sponsored by Junior Class. TOP: Ann Landes, first runner-up sponsored by Rho Sigma; BOTTOM: Linda St. John, second runner-up, sponsored by Circle K.





Homecoming alternates



Student life

A university campus is not merely a place where students acquire "book knowledge." It also provides an ideal atmosphere in which students can interact and communicate.

Campus activities offered opportunities for self-discovery and expression. Through involvement in the activities, the student becomes more than just another card on file.





OPPOSITE TOP: Communication can be a kiss before a class. OPPOSITE BOTTOM: Kenneth Overton and Eddie Mosenthin play an intensely fought game of pocket billiards. TOP: Butch Reeves finds that sleep offers an effective way to communicate with oneself. BOTTOM: A few moments of communication before class can brighten up a gray winter day as demonstrated by Rex Terry and Nancy Gaines.

MISS OUACHITA 1970
Arkansas'
MISS CONGENIALITY

Margie Royston

Rho Sigma

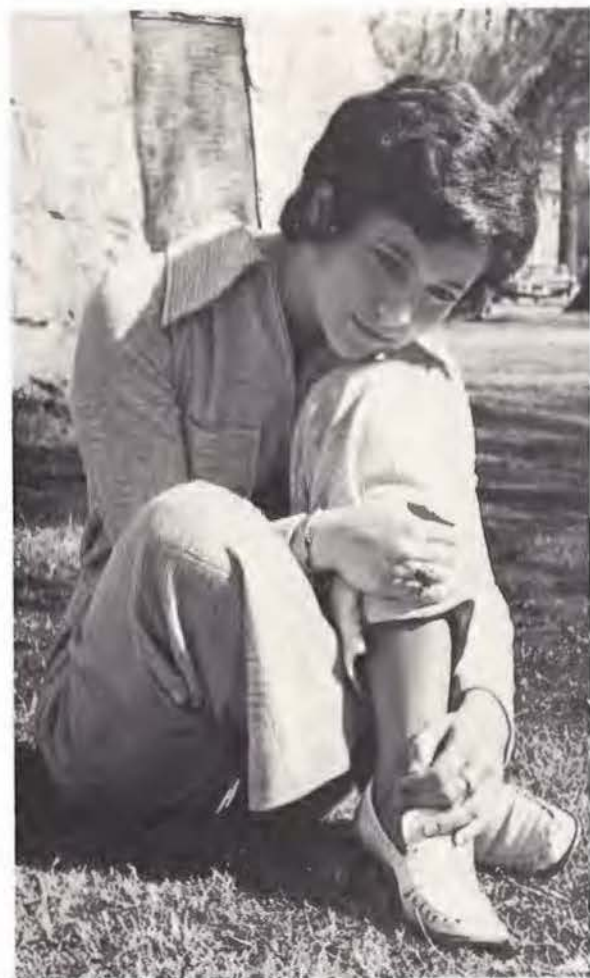




LEFT: Miss America 1970, Pam Eldrid, presents Margie with her roses and trophy after being selected Miss Congeniality by the other 39 contestants in the Miss Arkansas Pageant in Hot Springs. BELOW RIGHT: She is a senior psychology major from Hope. BELOW: Capturing enthusiastic response from the audience, Margie, along with the other contestants, walked the long runway in the state pageant held during the summer.



Miss OBU alternates





OPPOSITE TOP: Linda St. John, first alternate, was sponsored by the Sophomore Class and sang "It's A New World Coming." OPPOSITE BOTTOM: Kathie White, second alternate, was sponsored by Flippen-Perrin Dormitory and sang "What Kind of Fool 'Am I." TOP: Diana Kirk, third alternate, was sponsored by Beta Beta Social Club and sang "Both Sides Now." BOTTOM: Judee Thompson, fourth alternate, was sponsored by Alpha Omega Eta Social Club and played "Charade" on the piano.

OUACHITONIAN BEAUTY

Anne Landes

Sponsored by the cheerleaders, Anne is a sophomore from Magnolia.









OUACHITONIAN BEAUTY

Pam King

Pam was sponsored by Beta Beta and is a sophomore from Arkadelphia.



OUACHITONIAN BEAUTY

Dianna Kirk

Dianna is a senior from Morrilton. Her sponsor was the senior class.







OUACHITONIAN BEAUTY

Judee Thompson Royston

Sponsored by AOE, Judee is a sophomore from Morrilton.



Who's Who

CAROL BOLLINGER: Brookshire, Texas; Gamma Phi; Tigerettes; Tennis Team, Christian Athlete Award; Honorable Mention All-American, College State Singles Champ, Arkansas State Tennis Singles Champ; U.S.A. National Basketball Team; P.E.M. Club, vice president; Outstanding Junior Band Award.

MARK BOWLES: McGehee; Alpha Chi; selected for the 1970 Who's Who in American Colleges and Universities.

KEN BROWN: Fayetteville; Blue Key Honor Fraternity; Alpha Chi; Phi Mu Alpha Sinfonia, 70-71 president; R.O.T.C. Awards, "Sons of the American Revolution", "Civitan"; Band Award, junior year; Phi Beta Mu Outstanding Student Award.



Carol Bollinger



Ken Brown



Eddie Buffington



Ouida Eppinette



Lin Gamble



Helen Gennings

EDDIE BUFFINGTON: Ashdown; Football 1966-69; All-AIC Stars 67-68-69; DMS; Scabbard and Blade; Rho Sigma Social Fraternity; Young Democrats.

OUIDA EPPINETTE: North Little Rock; EEE Social Club; Sigma Alpha Iota; Musicians Guild; Alpha Chi; Honors Program; Ouachi-tones; AIC Talent Show Winner, 1970; National Federation of Music Clubs Student State and District Winner 1969; Nominated by Ouachita Baptist University for Danforth Fellowship Scholarship; USO tour to Carribean with the Ouachi-tones.

LIN GAMBLE: Grand Cane, Louisiana; President of Sigma Gamma Sigma; Gamma Sigma Epsilon; Honors Program; Tennis Team; Volleyball Team; Tigerettes; All-American, basketball; Member of Women's USA Olympic Basketball team.

HELEN GENNINGS: Batesville; Ouachi-tones; USO Tour to Carribean; Miss Arkansas 1968; USO Tour to Vietnam in 1969.

JIM GILBERT: Texarkana; Rho Sigma Social Fraternity; Blue Key, President; Alpha Chi; Scabbard and Blade; Gamma Sigma Epsilon; Football Team.

WILLIAM GRIGSON: Little Rock; Gamma Sigma Epsilon; Beta Beta Beta; Alpha Chi; Young Americans for Freedom; Chemistry Club; Freshman Biology Award.

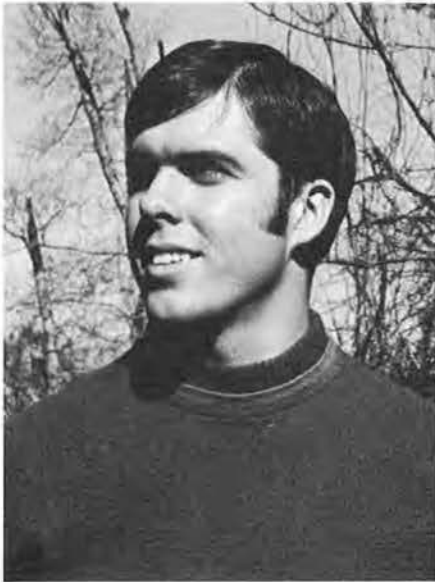
ROSEMARY HARRIS: Booneville; Young Democrats; AWS; SNEA; Deadline Club; Mental Health Club; News Bureau Staff; Past rush chairman and member of Theta Lambda Tau Social Club; Sophomore Class, vice-president; SIGNAL, assistant editor and editor; selected for National Student Registrar Publica-

tion; member of Student Aids Advisory Committee.

MARTHA HAYES: Van Buren; Gamma Phi Social Club, sergeant-at-arms; Student Senate, 68-69; Ouachitones; SNEA; Homecoming representative, '70; Ouachitonian Beauty contestant.

JIM KELLEY: Benton; Student Senate, president; Junior Class, president; Sigma Alpha Sigma; Circle K; Young Democrats; Distinguished Military Student Award.

DIANNA KIRK: Morrilton, Gamma Phi, president; Ouachitones; Student Senate; Senior Class, secretary; Ouachitonian Beauty.



Jim Gilbert



William Grigson



Rosemary Harris



Martha Hayes



Jim Kelley



Dianna Kirk

Who's Who



Lee Kuyper



Ginger Murdoch



Debora Mashburn



Kathy Otwell



Donna Pike

LEE KUYPER: Arkadelphia; Rho Sigma Social Fraternity; Gamma Sigma Epsilon; Alpha Chi.

DEBORAH MASHBURN: Bay Minette, Alabama; Alpha Chi; Sigma Alpha Iota; Musician's Guild; Outstanding Sophomore Award; Outstanding Junior Award, Honors Program; Ouachita Choir; Recipient of Rotary International Undergraduate Scholarship; studied at the Mozarteum in Salzburg, Austria.

GINGER MURDOCH: Atkins; EEE Social Club; Sigma Alpha Iota; Kappa Delta Pi; Alpha Chi; MENC; Musicians Guild; Ouachi-tones; Ouachita Singers; SNEA; Honors Program.

KATHY OTWELL: Malvern; EEE Social Club; Cheerleader, captain; PEM Club; Homecoming Queen, '70; R.O.T.C. Sponsor; AWS, Judicial Board; Kappa Delta Pi.

DONNA PIKE: Vitoria, Espirito Santo, Brasil; Gamma Phi Social Club; Sigma Alpha Iota, treasurer, editor, sergeant-at-arms, social chairman; Musician's Guild, vice president, program chairman; Diapason Club, president, treasurer; Alpha Chi; Honors program.

LE ELLA RATCLIFF: North Little Rock; Honor Program; Alpha Chi; Kappa Delta Pi; Sigma Tau Delta; SNEA; National Collegiate Players, president; National Student Registrar; Ouachi-tones; Tiger Mascot; Director of dramatic productions; EEE Social Club, parliamentarian; Sophomore Class, secretary; AWS, State treasurer.



Le Ella Ratcliff

MARGIE ROYSTON: Hope; Cheerleader; Ouachi-tones; Chi Delta Social Club; Homecoming Queen, '68; Miss Ouachita Baptist University; Ouachitonian Beauty; ROTC sponsor; Rho Sigma Social Fraternity, sweetheart; Mental Health Club; Arkansas Miss Congeniality, '70.



Margie Royston

SHARON SOUTH: North Little Rock; Gamma Phi Social Club, secretary; Senate, sophomore and junior senator; Sigma Gamma Sigma.



Sharon South

JAMES STAFFORD: Arkadelphia; Pershing Rifles, commanding officer; Scabbard and Blade; Drill Team, commander; PMS Medallion Award; American Legion Military Excellence Award; Army Flight Program; Rotarian Award; Distinguished Military Student; Young Americans for Freedom.



James Stafford

JANE THOMAS: Little Rock; EEE Social Club, chaplain, vice-president; National Collegiate Players, secretary; Ouachita Singers; Pi Kappa Delta; AWS, president; Religious Drama Guild; Debate Team; SNEA; selected for National Student Registrar Publication.



Jane Thomas



Tommy Thomason

Who's Who

TOMMY THOMASON: Stamps; Honors Program; Blue Key; Alpha Chi; Signal staff; Ouachitonian staff; Sports Information Director; Young Republicans; Deadline Club.

ZANE WILSON: Mountain View; Who's Who Among Students in American Junior Colleges; Ministerial Alliance, president; Mental Health Club; Honors Program.

POYEE WONG: Hong Kong; Gamma Phi Social Club; Ouachitonian Beauty Contestant; AWS.



Zane Wilson



Poyee Wong



Studies





OPPOSITE TOP: Dr. Ben Elrod and Dr. Grant discuss development opportunities. OPPOSITE BOTTOM: Dr. Grant poses for his official inauguration portrait. RIGHT: Dr. Grant relaxes during the Ouachita-Arkansas Tech homecoming game. BELOW: Dr. Grant, his mother, Mrs. James R. Grant, and Dr. George Blackman reminisce about past years at Ouachita.





Grant leaves Vanderbilt for OBU presidency

At a time in the nation's history when being a college president isn't as popular as it used to be, Dr. Daniel Grant gave up his position as professor of political science at Vanderbilt University where he had been since 1948 to become president of Ouachita. His father, the late Dr. James R. Grant, had served as president of Ouachita from 1934 until 1949.

A nationally recognized authority on urban and metropolitan government and intergovernmental relations, Dr. Grant is an active Baptist layman, a frequent speaker on college campuses during Religious Emphasis Weeks, and International Student Conferences.

He is the author of many books and articles dealing with state and local governments.

Dr. and Mrs. Grant have three children, Carolyn, Shirley and Ross.

Dr. Grant inaugurated 12th president of OBU

Dr. Daniel R. Grant became the twelfth president of Ouachita in colorful ceremonies Oct. 22. In accepting the job which he had actually begun on Feb. 1, 1970, Dr. Grant challenged the University to be "the cutting edge in Christian higher education."

Held in Rockefeller Field House, the inauguration drew official representatives from 51 colleges and universities and featured music by the University Band, salutations from the Former Students Association, the student senate, Clark County, Henderson State College and the Arkansas Baptist State Convention.

The inaugural speaker was the Honorable Carleton A. Harris, chief justice of the Arkansas Supreme Court.

Concluding the historic event was a light-hearted dinner where the principal speaker was Chet Lauck of "Lum 'n Abner" fame.

Chairman of the steering committee in charge of planning the inauguration was Dr. William Trantham.





OPPOSITE TOP: Dr. Daniel R. Grant delivers the inaugural address. OPPOSITE BOTTOM: Ouachita faculty and staff members (front row) and representatives from other colleges and universities applaud during the inaugural program. ABOVE: Dr. Ben Elrod, vice president for development, introduces the Honorable Carleton Harris, the inaugural speaker. LEFT: Dr. Grant and Chet Lauck chat during the inaugural dinner.

Three vice presidents work with Dr. Grant

Working directly under Dr. Daniel Grant, Ouachita's three vice presidents guided the University's financial, academic and development operations.

The vice president for finance, Jim Orr, was responsible for general business affairs, plant operation, college transportation, commercial properties, faculty rental housing, the bookstore and post office, education supplies, the dining hall, and the University farm and stables.

Responsibility for general academic matters and for supervision of the deans and directors of all academic programs was assigned to the vice president for academic affairs, Dr. Carl Goodson.

Fund raising, public relations, placement and activities of the Former Students Association were responsibilities of the vice president for development, Dr. Ben Elrod.

Ouachita Baptist University, owned and operated by the Arkansas Baptist State Convention, worked through a Board of Trustees numbering 24 members, elected by the convention. Eight of these trustees are elected each year for a three-year term; they may succeed themselves once before having to go off the Board for at least one year.





OPPOSITE TOP: Dr. Ben Elrod, vice president for development, planned future improvement and expansion for Ouachita. OPPOSITE LEFT: Dr. Carl Goodson, vice president for academic affairs, was largely responsible for developing OBU's "educational excellence." OPPOSITE RIGHT: James Orr, vice president for finance, administered the financial and business affairs of the University. TOP: Members of the Board of Trustees are (bottom row) C. S. Williams, O. Wendell Hall Jr., Rev. D. B. Bledsoe, Dr. Daniel R. Grant, Mrs. Robert Gladden, Dr. George T. Blackmon. (second row) Rev. Johnny Jackson, Alvin Huffman Jr., H. E. Raines, chairman, Harold Echols, J. F. Gardner, John May. (third row) Dr. Rueben Setliff, Dwight Linkous, Dr. L. H. Coleman, Robert S. Moore, Dr. Walter Yeldell. (top row) Jim Green, G. W. Delaughter, Dr. William L. Bennett, Rev. Dan Blake, Dr. Richard Petty. LEFT: Dr. Daniel R. Grant chats with H. E. Raines (l.), the new chairman of the Board of Trustees, and Jeral Hampton (r.), the outgoing chairman.



Administrators guide student counselling

Among the most vital of the administrative duties at Ouachita are those of registrar, student aids, field representative and dean of students.

Keeping all academic records is the responsibility of the registrar, along with counselling on progress toward undergraduate graduation.

Student loans, scholarships, Work-Study grants, campus employment and other student aids are duties assigned to the director of student aids.

The field representative is in charge of the all-important area of student recruiting and general relations with Ouachita's denominational public.

The dean of students spends much of his time in counselling and also handles student activities and disciplinary action.





OPPOSITE TOP: B. Aldon Dixon is dean of students.
OPPOSITE BOTTOM: Wayne Smith is registrar.
LEFT: Jim McCommas is director of student aids.
BELOW: Dr. Tom Gambrell is Ouachita's field representative.



Administrators supervise university functions

Plant maintenance, supervision of student religious activities, direction of women's activities, operation of the library and information services are all a part of Ouachita's administrative program.

The director of plant maintenance keeps the University's operations functioning by looking after the upkeep of all buildings and equipment.

Activities at the Baptist Student Union, Ouachita's largest and most inclusive campus organization, seek to relate college activities to local Baptist churches and to deepen the spiritual lives of the students.

Responsibilities for personal counselling of women, supervision of women's housing and coordination of women's activities are assigned to the dean of women.

The librarian looks after Ouachita's 85,000 volumes, pamphlet collection, film strips, recordings and other audio-visual materials.

Information services at Ouachita include news stories, design of displays and folders, promotional brochures and hundreds of photographs of University events and student leaders.





OPPOSITE TOP: Mrs. Neno Flaig is dean of women. OPPOSITE LEFT: Col. John T. Berry is director of plant maintenance. OPPOSITE RIGHT: Doug Dickens was director of the Baptist Student Union after the resignation of Mervin Mims in November. ABOVE: Mrs. Juanita Barnett is librarian. LEFT: William D. Downs Jr. is director of information services and chairman of the department of journalism.

Variety of operations in administrative work

The day-to-day administrative operations at Ouachita require closely coordinated teamwork among the many men and women who are assigned staff duties.

The dietician and cafeteria supervisor must plan menus, buy and prepare food for 1,900 meals a day and supervise a staff of 24 full-time and 36 student employees.

Ouachita's vital telephone communications are carried out by only one full-time person, the head operator, and six student operators.

In addition to handling a staggering volume of books every year, the book store is responsible for selling supplies, art materials, sweat shirts, social club jewelry and for ordering senior rings, graduation announcements and caps and gowns.

Assisting the registrar means supervising a staff of 18, including 17 student helpers, keeping track of records and acting as secretary to the registrar.





OPPOSITE TOP: Cedric Neel is dietician and cafeteria supervisor. OPPOSITE BOTTOM: Mrs. Elizabeth Fletcher is head operator on the telephone switchboard. LEFT: Miss Martha Greene is manager of the book store. BELOW: Mrs. Ann Hansard is assistant to the registrar.





Mrs. Ruby Beard
Frances Crawford East, counselor
 Mrs. Grace Boone
Cone-Bottoms, counselor
 Miss Anna Bryan
College nurse
 Mrs. Shirley Callaway
Business Office, payroll clerk



Mrs. Martha Carozza
Northwest, counselor
 Mrs. Sharon Cheatham
Maintenance secretary
 Mrs. Joyce Francis
Business Office, receptionist
 Mrs. Dora Goff
Student Center, supervisor



Mrs. Mary Holiman
Business Office, cashier
 Mrs. Betty Jones
President's Office, secretary
 Mrs. Belva Kelly
Daniel Memorial North, counselor
 Mrs. Anna Mason
West, counselor



Variety of responsibilities assigned to OBU personnel



Mrs. Ina Morgan
Flippen-Perrin, counselor
Mrs. Johnnie Morris
Library, circulation
Mrs. Jean Raybon
Assistant librarian



Kirk Smith
Student Aids Office, manager
Mrs. Katherine Sumerlin
Periodical librarian
Mrs. Nellie Wallingford
Military Department, secretary



Mrs. Kate Ward
Conger, counselor
Mrs. Lennie West
Business Office, bookkeeper
Mrs. Jo Westfall
President's Office, secretary



OPPOSITE TOP: The business office is kept under control with the help of Mrs. Lennie West. LEFT: Mrs. Thelma York, dorm mom for Daniel South, enjoys an evening of television with some of her "boys" — Eddie Chism, Cliff Clements, and Bubba Cope.



OPPOSITE TOP: Una Mae Atkinson, graduate teaching fellow in English, checks compositions from her freshman English class. OPPOSITE BOTTOM: Tim Blann, graduate student in music education, practices for his weekly piano lesson. TOP: Dr. Dewey Chapel, dean of graduate studies, considers suggested revisions in the graduate program. BOTTOM: Margie Halbert, graduate student in music education, worked many hours on preparing to teach a music lesson.





Record number enroll for graduate work

The OBU Graduate School recorded its largest enrollment in 1970-71, with 88 full-time students. Studies led to the master of science in education degree, or to the degree of master of music education. Graduate programs were designed according to the students educational objective, whether further graduate work on the doctoral level was desired, or whether the masters degree was simply needed to broaden the student's knowledge in his area.



Dr. James Berryman
Religion and Philosophy
Dr. Raymond Coppenger
Religion and Philosophy
Wayne Smith
Religion



Dr. Robert Stagg
Religion
Dr. Cecil Sutley
Religion
Dr. Vester Wolber
Religion



OPPOSITE TOP: Peggy Glover perches in the upper window of Berry Chapel and pensively surveys the campus below. OPPOSITE BOTTOM: Dr. Vester Wolber and his secretary confer on the day-to-day operations of the religion department. RIGHT: Photography puts across the biblical message of Christ that "no man shall enter but by me."





Students direct efforts for student-led revival

Major efforts for students in religion this year were directed toward a student-led revival held in the fall. The Ministerial Alliance, which is a fellowship of students who work in the field of religion, helped to direct the activities. The members tried to "inspire" without becoming involved as a club.

Classroom hours were enriched by the stories and pictures of students and teachers who had spent the previous months as summer missionaries or in other home and foreign mission fields.

The religion department expanded: Bible Study Workshops were offered for pastors; Dean Bill Dixon and Dr. Ben Elrod were added to the staff for the second semester; and both teachers and students benefited from the use of additional visual aids.

The fall lecture series brought in the widely recognized Dr. Paul Drakeford. He spoke to chapel groups, gave lectures and held personal conferences with interested students.



New look, more students, spark school of music

The largest music enrollment since 1965 and major improvements in physical facilities highlighted the fall term of Ouachita's school of music.

Mitchell Hall auditorium was air conditioned, paneled, carpeted and had a new ceiling and new lighting installed. The music building also was repainted inside.

As an inaugural event, Edmund Karlsrud of the Metropolitan Opera gave a bass-baritone concert. Other visiting artists included French hornist C. Robert Crane who presented a concert in March, and an all-Schumann program from Arkansas State University.

During the year, a number of faculty and junior and senior recitals were given, along with programs by various groups within the school of music. Major programs included *The Consul* by the Opera Workshop, the *Messiah* presented by the Ouachita Choir and a madrigal festival including high school and college groups.

State auditions for the National Association of Teachers of Singing were held on the Ouachita campus in November and Diana Wilson and Becky Russell were two of the eight winners. They represented Arkansas in the national auditions in Dallas last December.

A Contemporary Music Symposium was held in March in which faculty members and students presented their own compositions.

This summer the Ouachi-Tones will tour the Caribbean under the auspices of the USO.





OPPOSITE TOP: A freshman is the accompanist for the *Messiah* presented by the OBU choir. OPPOSITE BOTTOM: OBU band director Marvin Lawson gives instructions to band students during rehearsal. LEFT: OBU band members Judy Nichols and Greg Porter rehearse during an outdoor band practice.



Miss Evelyn Bowden
Organ and piano
George R. Keck
Piano
Marvin Lawson
Low brass
Miss Helen Lyon
Strings and voice
Miss Virginia Queen
Piano

Ralph Rauch
Flute
Mrs. Frances Scott
Voice
Mrs. Jake Shambarger
Voice
James Smith
High brass
Jimmy Tompkins
Voice

Dr. William Trantham
Dean of the School of Music, piano
Charles Wesley
Woodwinds
Charles Wright
Voice

Study areas broadened in humanities programs

The department of journalism expanded its program this year to include courses in related fields of study such as art, drama, economics, English, and the social sciences.

At the fall meeting of the Arkansas College Publications Association the *Ouachitonian* won second place in general excellence as well as second places in photography and editorial planning, and honorable mentions in typography, layout, and editorial content.

Fall academic studies were supplemented with field trips to the *Arkansas Gazette*, KATV, KLRA, and Cranford-Johnson advertising agency.

Exposure to new trends in journalism such as in-depth interpretive stories, public affairs reporting, and reviews of professional journals highlighted student work.

Improvements in the art department included complete renovation of studios. Chairman Phares Raybon exhibited original works in Riley Library during Dr. Grant's inauguration.

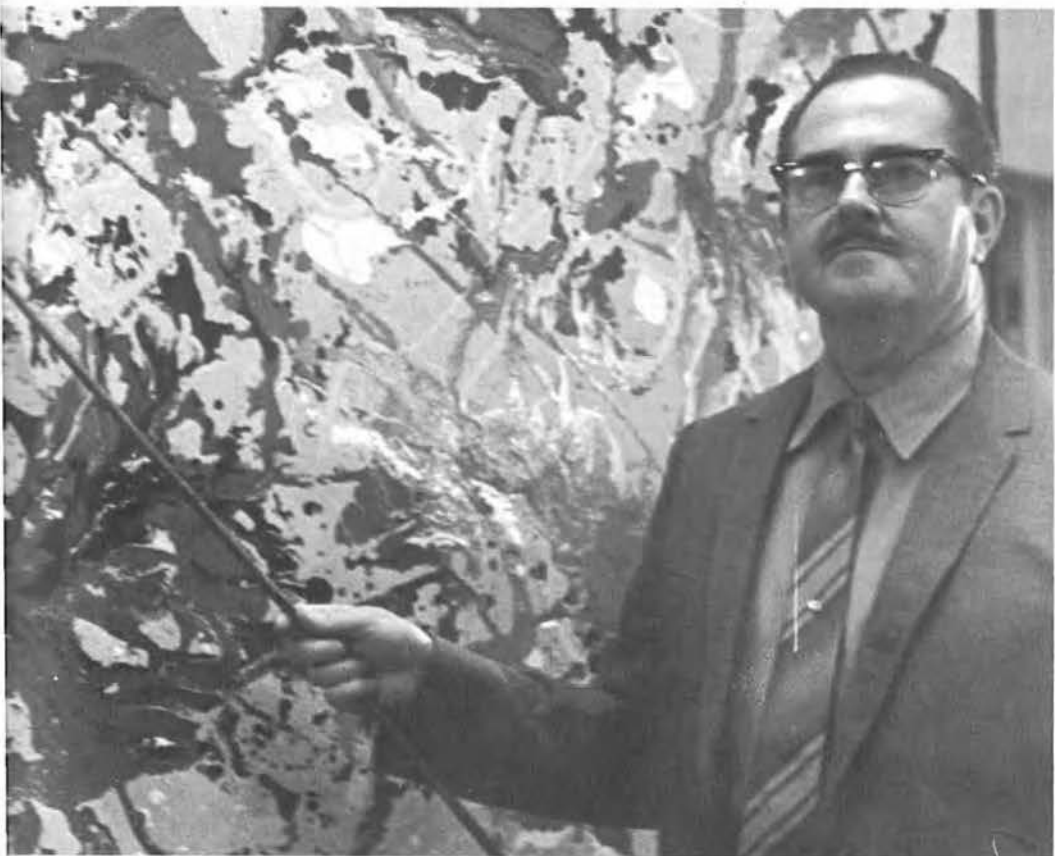
Elements of style and historical backgrounds of masterpieces in art, music and literature highlighted studies in the humanities. Lectures were illustrated with prints, slides and movies and students were encouraged to attend art exhibits and concerts.

OPPOSITE TOP: Mary Johnson, make-up editor; Paula Mitchell, editor; and William D. Downs Jr., advisor, watch as the final touches are put on the *Signal* plates at the Southern Standard. OPPOSITE BOTTOM: Phares Raybon, associate professor of art, comments on one of his paintings during his art exhibit in honor of Dr. Grant's inauguration. LEFT: Eddie Stover interviews Dean Bill Dixon while covering his beat for reporting class. The reporting classes supplied stories for the campus newspaper, *The Signal*. BELOW: Nita Murray, *Ouachitonian* fall editor, checks with the other members of OBU's delegation at the Arkansas Collegiate Press Association convention before accepting the awards for last year's yearbook.





Bill Downs
Journalism, director of publications
Miss Fay Holiman
Humanities
Phares Rabon
Art, division chairman





Free style composition spices English classes

In redesigning its freshman English program, the English department took a creative approach to writing during the school year. Freshmen began by disregarding spelling and punctuation and employing free style instead. Through the year they worked toward more sophisticated writing. Returning after a year's absence was Dr. Herman Sandford.

The speech and drama department gained Raymond Caldwell, a professor from Kilgore College. Ouachita students, under the direction of Dennis Holt Sr., entered their production of *Hamlet* in the state festival in December and retained membership in the American National Theater and Academy and the National Collegiate Players.

James Hamm joined the foreign language department after completing his master's degree at Stephen F. Austin University.





Jack Estes
French
 Mrs. Neno Flaig
English, Dean of Women
 James Hamm
Spanish
 Dennis Holt Sr.
Drama, division chairman

Dennis Holt Jr.
English
 Mrs. Betty McCommas
English
 Dr. Gilbert Morris
English, department chairman
 Jane Quick
English



OPPOSITE TOP: Dr. Gilbert Morris chats with his freshman English students in an informal setting. OPPOSITE BOTTOM: Mrs. Betty McCommas explains Plato's philosophy to her humanities class. LEFT: Mary Ann McRae "ages" Steve Peters by applying theatrical make-up before a performance of *Hamlet*.



OPPOSITE TOP: Dissection is an important part of science lab sessions. Freshman females put aside squeamish feelings to dissect rats, crayfish, frogs, grasshoppers, and worms. OPPOSITE BOTTOM: Dr. Joe Nix and a student helper conduct one of many experiments concerning conservation. RIGHT: Anna Waldrum takes time out during a lab session to cuddle a guinea pig used in research.

Richard Brown
Biology
Dr. Wayne Everett
Chemistry
Glen Good
Physics
Dr. Clark McCarty
Chemistry and Physics

Dr. Alex Nisbet
Chemistry
Dr. Joe Nix
Chemistry
Dr. Victor Oliver
Biology, division chairman
Kenneth Sandifer
Biology





The facts and relationships of the universe as well as the scientific method in thinking should be known by all. Scientific knowledge is basic to careers in medicine, pharmacy, chemical research, engineering, and other fields.

Special attention was given to the preparation of elementary and secondary teachers of science.

This year the life science and physical science courses have been combined into a two-semester natural science course which must be taken in sequence.





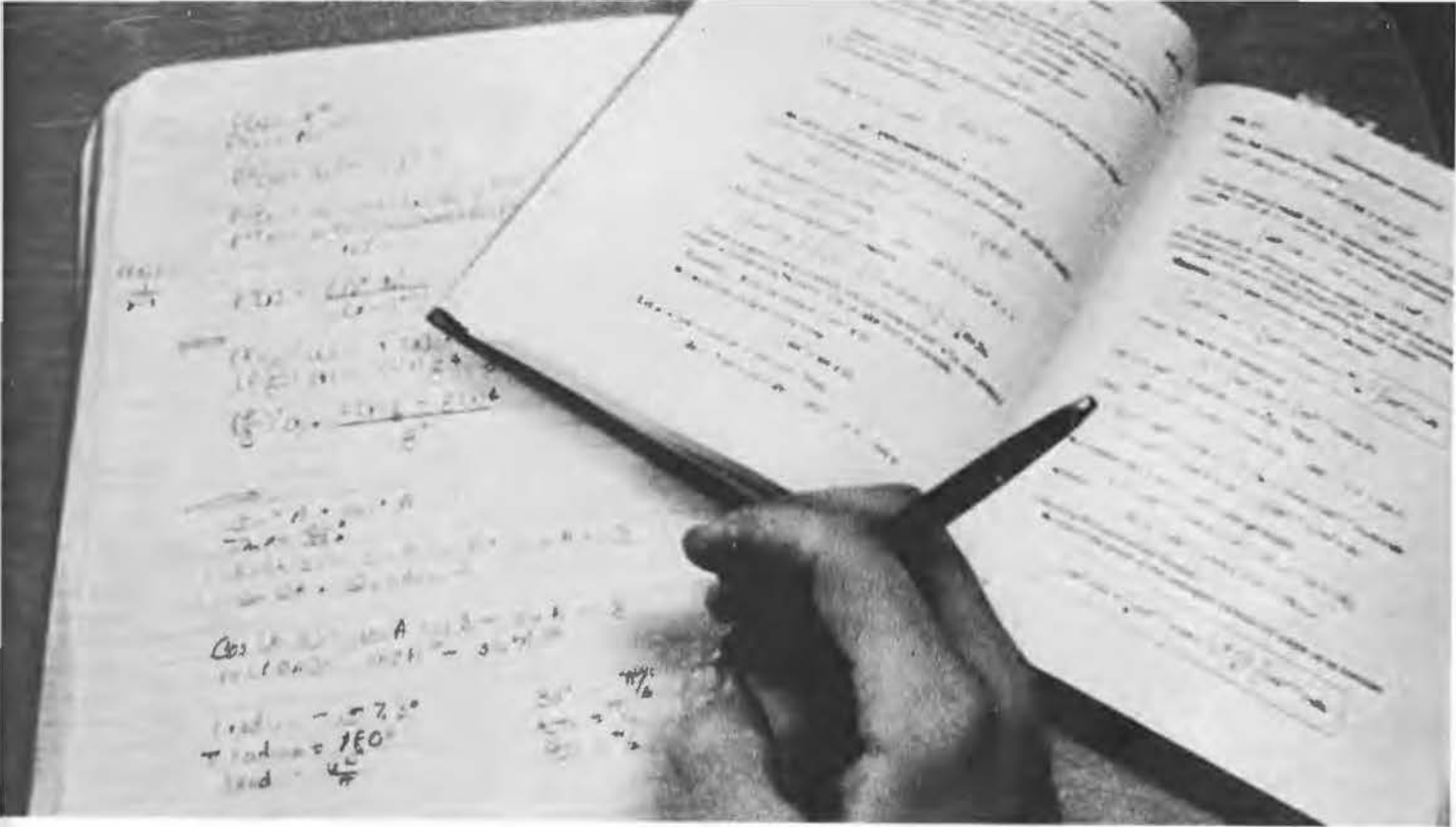
RIGHT: Judy Clowers and Sharon South get practical experience in sewing their own clothes in a home economics course. OPPOSITE TOP: Complicated equations are a constant challenge to the math major. OPPOSITE BOTTOM: Home economic majors get a chance to try their culinary skills in the kitchen.

William Allen
Mathematics
Dr. Charles Chambliss
Mathematics
Miss Maude Davis
Mathematics
Mrs. Frances Elledge
Home Economics



Mrs. Annette Hobgood
Home Economics
Miss Kathryn Jones
Mathematics
Dr. Donald Seward
Mathematics
Mrs. Hazel Thomas
Home Economics





Science allows a logical way to study

Developing logical habits of thought and providing the techniques needed for study of the exact sciences, the department of mathematics added Calvin Horton from California Baptist College, a graduate of Ouachita.

The home economics department, preparing girls for the demands of homemaking and for home-related careers, engaged in numerous home-centered activities throughout the school year. Members of the department attended the American Home Economics Association college club workshop at the University of Arkansas in the late fall.



Mrs. Helen Frazier
Secretarial Science
 Jonathan Kelly
Accounting
 Dr. Lera Kelly
Business Administration



Miss Sammie Lookingbill
Economics
 Jim McCommas
Business Administration
 Delbert Palmer
Business Administration
 Mrs. Margaret Wright
Business



Business dept. boasts outstanding teacher in state

Office Administration replaced the old title of secretarial science this year, but the department still offered two and four-year programs for future office managers and secretaries.

Both theory courses and a methods course were offered by the business administration department to prepare students for careers in business and in teaching business courses in secondary and higher education. Courses in accounting and economics were also offered.

Mrs. Helen Frazier, assistant professor of office administration, was elected the outstanding business teacher of Arkansas by the Arkansas Business Education Association. Mrs. Frazier was also elected president for the state association.

Phi Beta Lambda, business fraternity, volunteered to paint the inside of all business classrooms as a club project this year.





OPPOSITE BOTTOM: Kay White ponders over her adding machine in one of her office administration classes. TOP: Mrs. Helen Frazier helps Joyce Mason and Don McCutcheon with difficult problems. BOTTOM: Practical experience proves of value in all business courses.



TOP: Each week Leta Strother pays a visit to her "special friend" at the children's Colony.
BOTTOM: Many students find that the library becomes a second home at college. OPPOSITE TOP: As part of her job practice teaching, Amy Lowery demonstrates how to count.



Involvement necessary for departmental success

"Becoming involved" served as a basis this year for Ouachita students in the areas of psychology, library science, and teacher education. Classes were spiced with practical work at the Arkadelphia branch of the Arkansas Children's Colony and reading programs for elementary students conducted on the campus. Valuable experience was gained through putting textbook knowledge to use. Students worked on a one-to-one basis with the retarded and slow learners and, by doing so, strengthened their knowledge and understanding of their major fields.

Prospective teachers received vocational preparation through professional education courses and practical experience came in the teaching-learning process through the professional semester which includes actual classroom teaching.



Dr. Dewey Chapel
Dean of Graduate Studies; Secondary Education
Mrs. Dorothy Chapel
Library Science
Mrs. Louise Durkee
Elementary Education
Ralph Ford
Secondary Education

Dr. Maurice Hurley
Psychology, department chairman
Ronald Munn
Secondary Education
Mrs. Jean Raybon
Library Science
Mrs. Kathryn Sumerlin
Library Science

Thurman Watson
Elementary Education
Dr. Weldon Vogt
Psychology

OPPOSITE TOP: Jim Ranchino (r) and newly elected Arkansas Lt. Gov. Bob Riley discuss Dr. Riley's campaign plans in the last week before the election in November. RIGHT: Brenda Dierker takes notes for future reference in the Black American unit of American Civilization. BELOW: Lavell Cole leads one of the discussion groups connected with the American Civilization classes.





Social science offers sense of involvement

Campaigning, adding courses, attending conventions and appearing on television commentaries were only a few activities of members of the social science department during the '70-'71 school year.

Political science professor Dr. Bob Riley was elected lieutenant governor of Arkansas in November after a long and grueling campaign. Fellow professor Jim Ranchino made numerous television appearances in his role as political analyst for KATV in Little Rock.

The history department added Jim Megginson, a doctoral candidate at George Washington University, who recently returned from a year's study in London. Department chairman Dr. Everett Slavens introduced a course on the history of Black Americans and had an article on the Negro press published in the Missouri Historical Review. In the fall, the four history faculty members attended the Southern Historical Convention in Louisville, Ky.

Man yesterday, today, and tomorrow is the major concern of social science students at Ouachita, as they seek an awareness of how man functions in his world and what can be done to help him find his true place in it. Social science gives students a sense of involvement in their world and makes life have a bit more meaning.



John Halbert
Sociology
Dr. Randolph Quick
Sociology, department chairman
Jim Ranchino
Political Science

Dr. Bob Riley
Political Science, department chairman
Mac Sisson
History
Dr. Everett Slavens
History, department chairman

LTC Edgar David Jr.
Professor
 MSG Dallas Harris
Principal drill instructor
 SSG Donald Jeter
Supply sergeant
 SFC Jerry Knapp
Senior instructor



SSG Ronald Warnock
Administrating NCO
 Maj. Charles Watkins
Assistant professor
 SGM Jesse Wilborn
Chief instructor
 LTC Billy Williams
Assistant professor



Military science dept. introduces new program

The Ouachita military science department reinstated an Army Flight Program this year. The five senior students enrolled studied flight, weather, flight planning, Federal Aviation Regulations, and safety. Upon completion of their instruction, the newly commissioned second lieutenants must volunteer for flight training upon entry into active duty.

Last summer, 29 OBU cadets participated in summer camp. They were trained in all basic military skills including weapons, radio-telephone procedures, tanks, patrolling, etc.

Nine scholarships were awarded by Ouachita this fall to offer financial assistance to young men in the four-year Army ROTC program.

Training in military science included the basics of weaponry, drilling, map reading, military history, as well as two hours of drill each week.





OPPOSITE BOTTOM: Jack Cook, a student in pilot training, inspects an engine before takeoff. LEFT: ROTC cadets raise the flag each morning in front of the administration building. ABOVE: ROTC cadets tramp along a muddy road during maneuvers.



OPPOSITE TOP: Scott Phillips and Steve Siebert check their scuba equipment before plunging into the depths of the OBU pool. OPPOSITE BOTTOM: Coach Buddy Benson and All-AIC player Jim Boyette discuss strategy for an upcoming play. RIGHT: A freshman girl takes careful aim as archery class begins.

Buddy Benson
Associate professor
Bill Goff
Assistant professor
Dr. Bob Gravett
Professor, department chairman
Miss Carolyn Moffatt
Assistant professor



Miss Mary Ann Otwell
Instructor
Jake Shambarger
Associate professor
Bill Vining
Associate professor



Physical education dept. seeks to mold character

Courses in the department of health and physical education provide basic instruction in health and safety, train physical education teachers for elementary and secondary schools, and teach the value of games and sports in the educative process.

• All students at Ouachita are encouraged to participate in intramural or intercollegiate sports in the University's effort to enrich personality by developing desirable attitudes toward health, social-mindedness, sportsmanship, competition, cooperative effort, institutional loyalty and other values and skills that carry over into later life.

