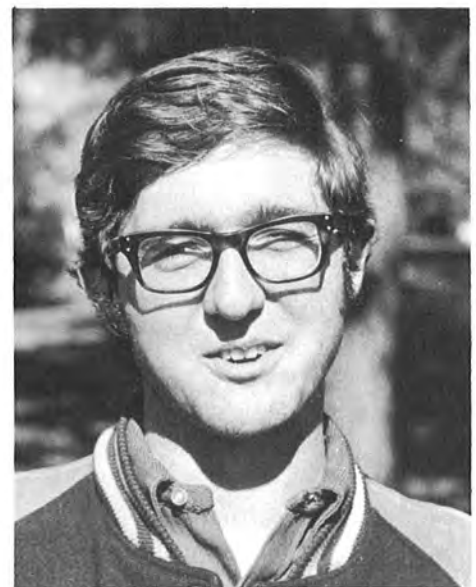


OUACHITONIAN / 1970



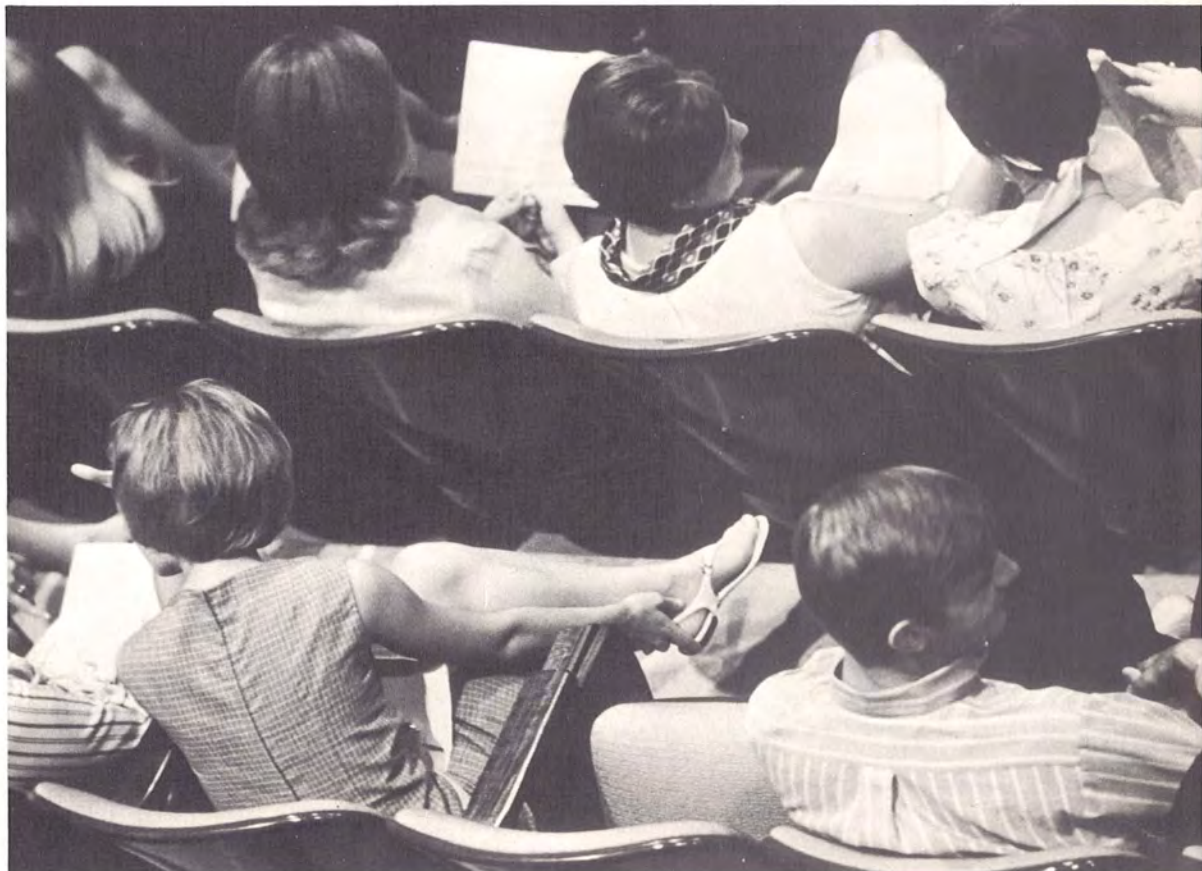
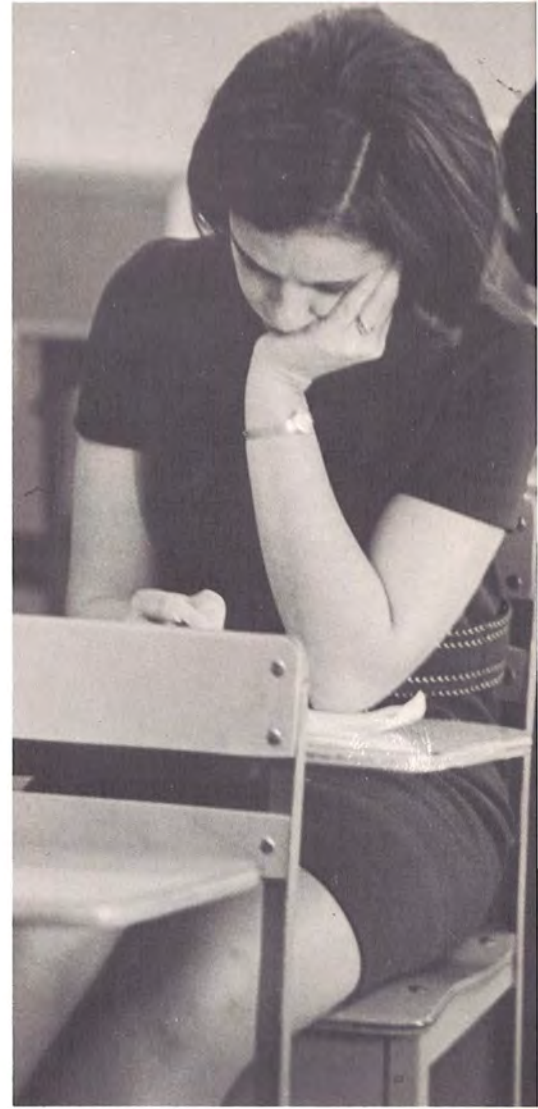
I looked at this university called Ouachita
and would have seen no more than
a mass of the elements fused together
in different recipes
had it not been for the individuals.

the
individual



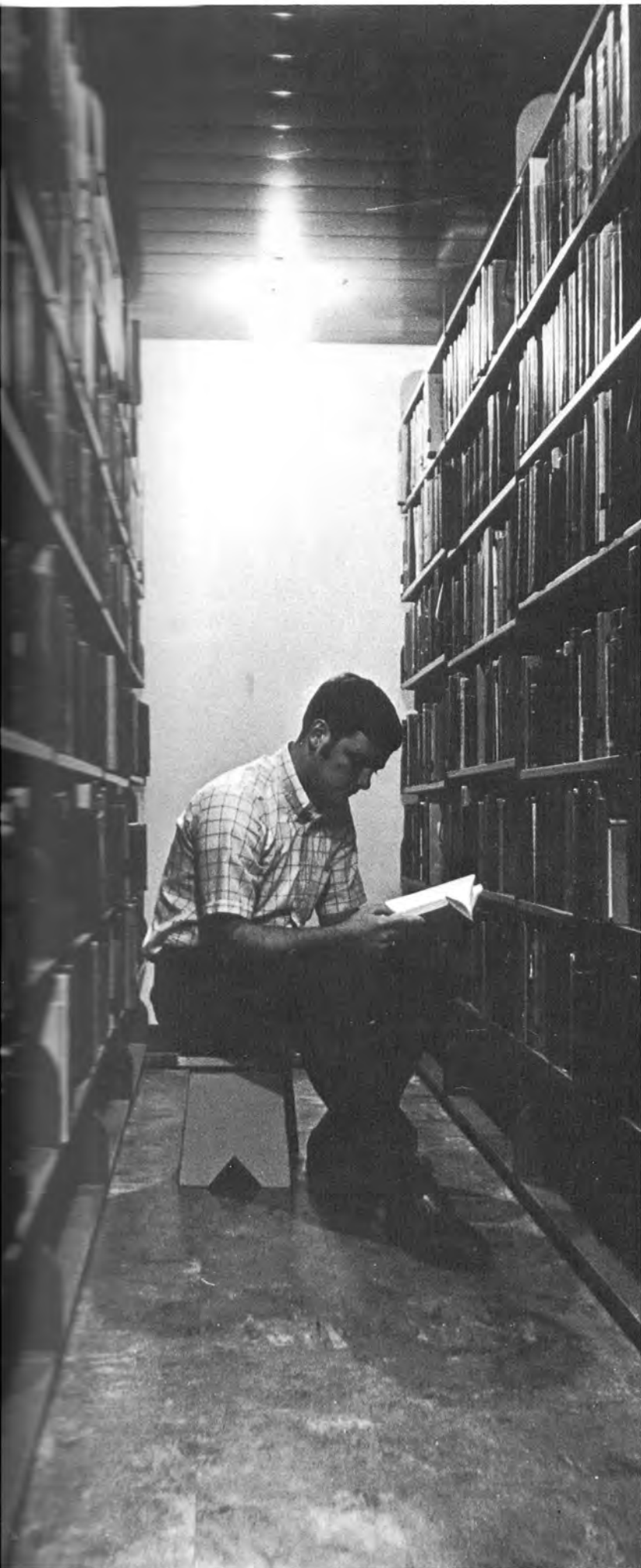
RAILEY-HICKINGSBOTHAM LIBRARY
COLUMBIA COUNTY LIBRARY

THE INDIVIDUAL
strives toward self-actualization.
He experiments, he creates, he evaluates,
attempting to discover
his identity.
He is motivated to grasp
the significance of his individuality and,
using his initiative,
develops unique abilities.



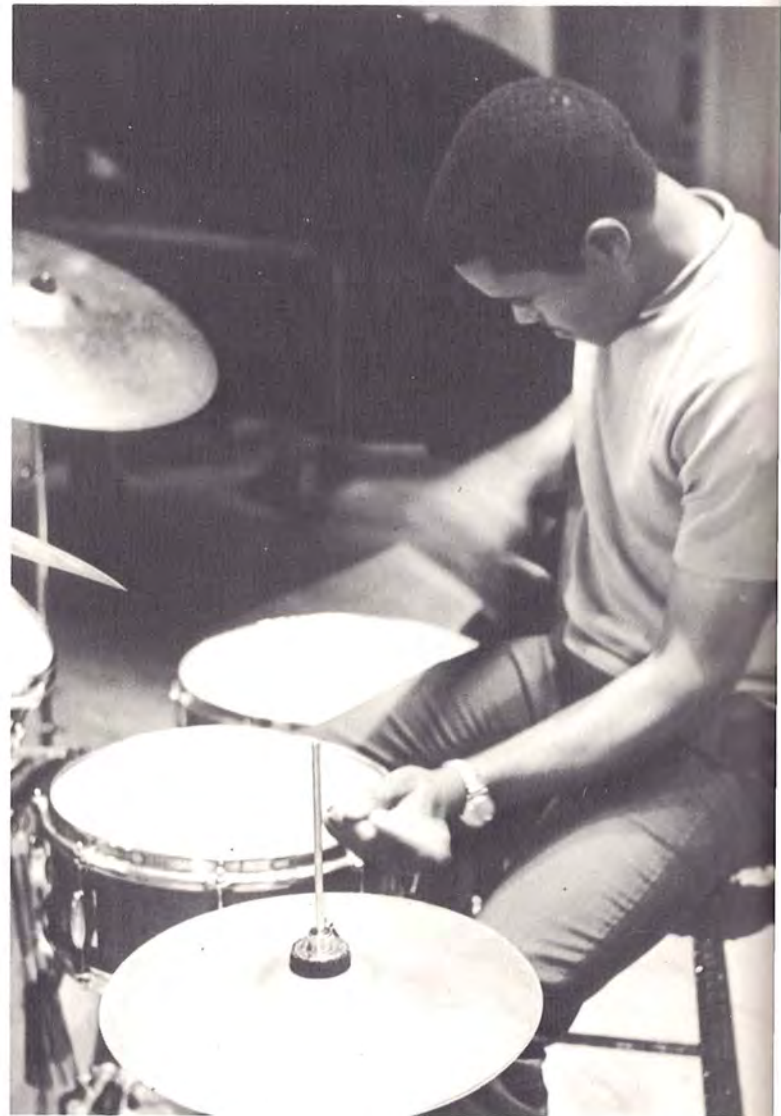






THE INDIVIDUAL
must retain the self
in the midst of crowds.
At times, he needs
solitude
in order, to hear the
rhythm of his own mind.
It is then he
appreciates the joy of being
himself.





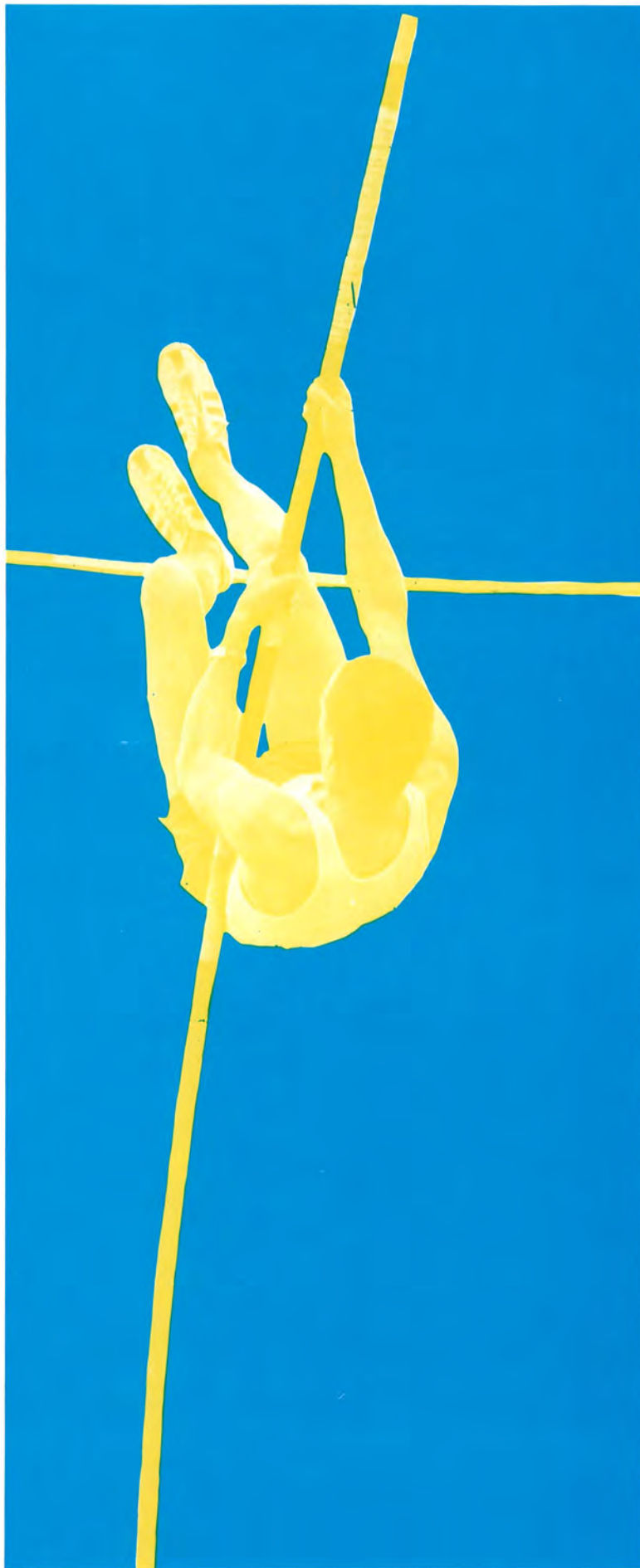
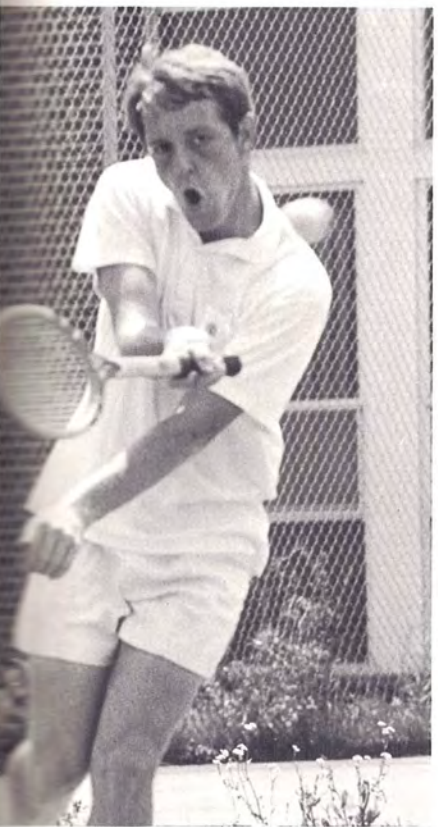


THE INDIVIDUAL
has his own means of
expressing his character,
and the God-given gift
to animate his feelings.
These talents may,
at times, seem insignificant,
but this is the individual's unique mode
of communication with other
individuals

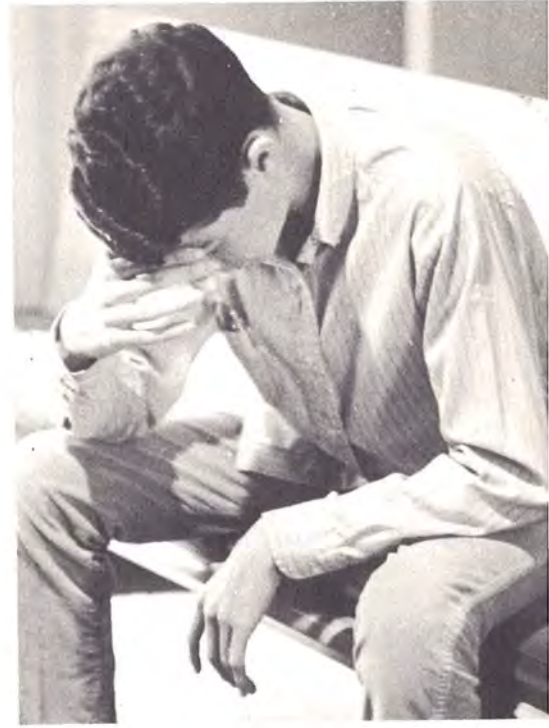


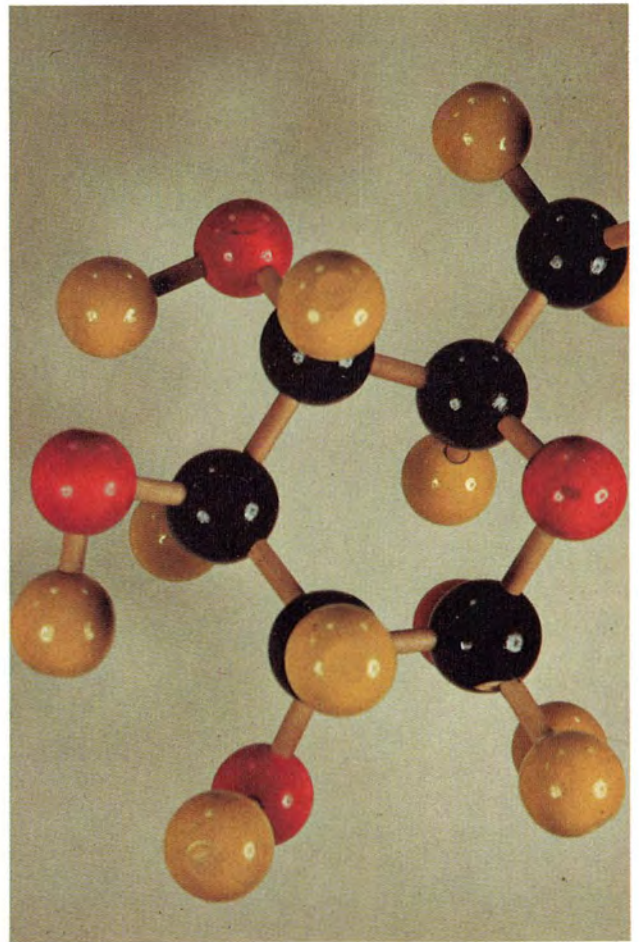
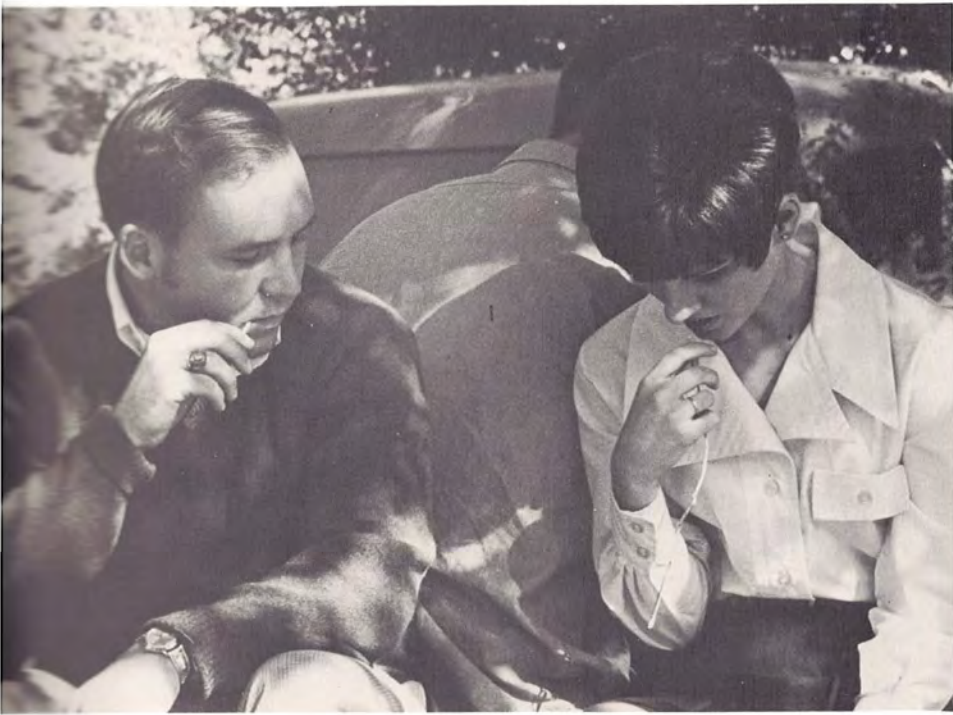
THE INDIVIDUAL athlete has a special feeling toward his sport. This feeling is accompanied by an inner drive that gives him self-discipline, strength, courage, and an acute desire to fulfill the pride in himself.





THE INDIVIDUAL
is often faced with the
challenge of conflicting claims.
He must resolve within
himself both the
dogmas of the Bible and
the intricacies of the molecule.
He thus balances his personal beliefs
and attains a measure of inner stability.

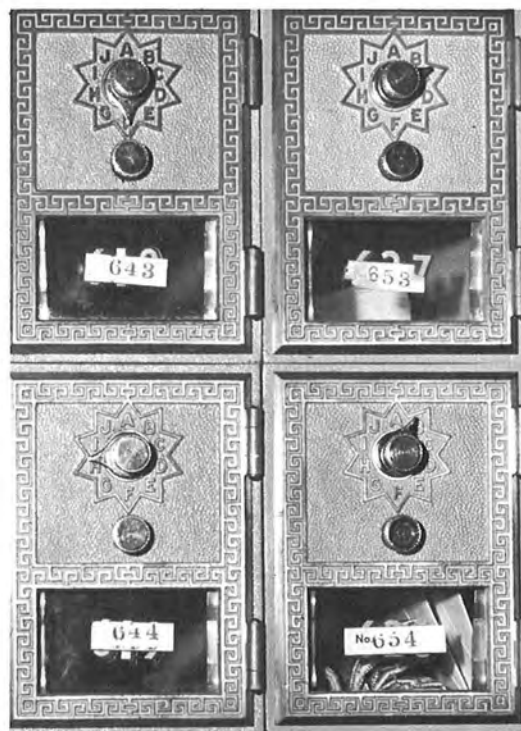








THE INDIVIDUAL
is perpetually in thought.
Thoughts about a date for the game,
an empty post office box,
people he passed today,
and the sometimes frustrating thought
of facing tomorrow.
He is saturated with a
kaleidoscope of ideas
that reflect his experiences
and values . . . and his uniqueness.



At first it was a campus—
a group of buildings,
trees, sidewalks,
and streets—
a place to study,
a place to learn,
and a place for fun—sometimes.
But it meant more when we met
its people,
people we learned to know
as individuals.





ouachitonian/1970

ouachita baptist
university

arkadelphia, arkansas

volume 61

glen mc neal/editor



contents:

student life/16

groups/74

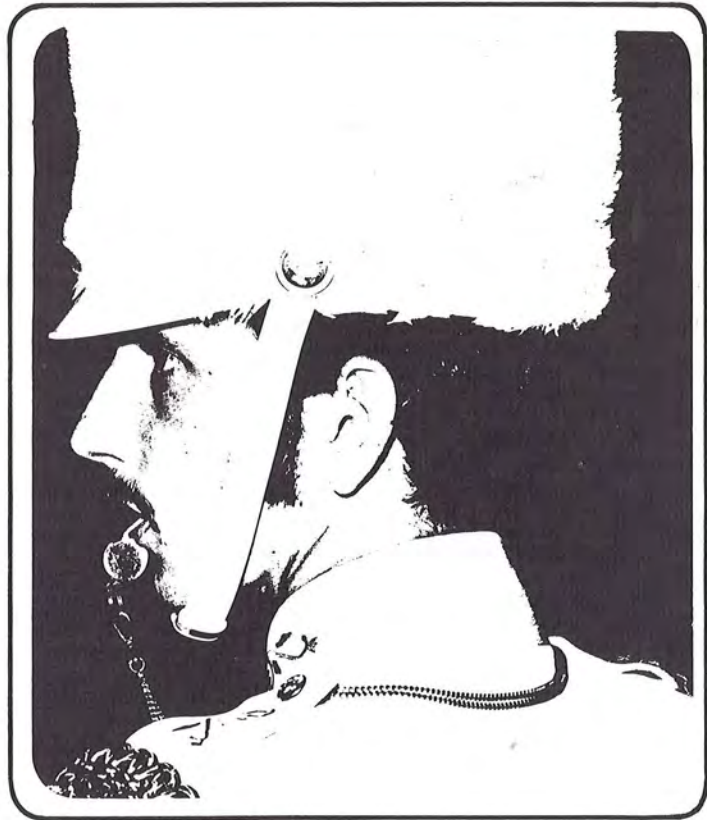
competition/140

studies/182

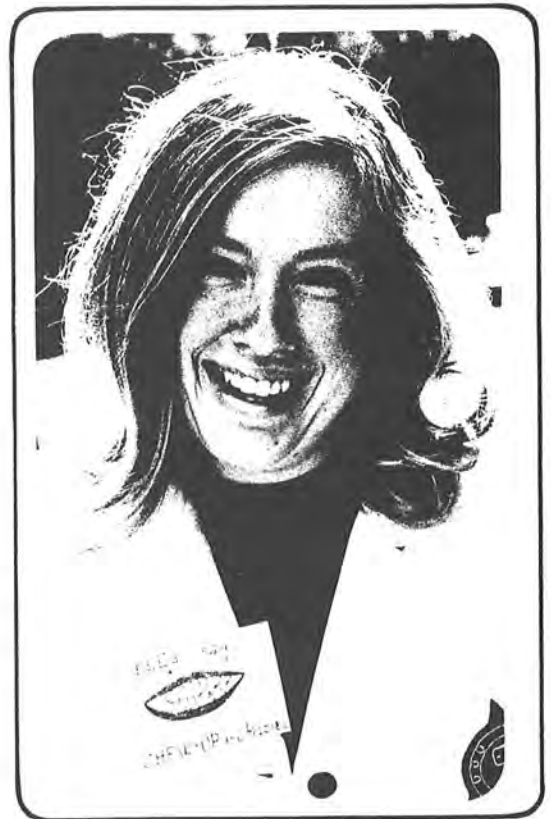
faces/204

community-index/270

THE INDIVIDUAL
must keep his uniqueness
not only in his life of
solitude,
but also in his relationship
with others.
The essence of being oneself
is the implementation of one's
singularity.



STUDENT LIFE



student life

stu-dent life n. 8a: that which im-
parts or excites spirit or vigor; an
individual human existence.

Campus activities offer the place
to become more than just
a set of digits on a pictured
ID card.
Our university presents students with
opportunities for discovery
and expression, as each progresses
on his way to the attainment
of his distinctive identity.







summer

Everyone was relieved when the '69 spring finals were over. Most went home to a waiting summer job or relaxation, some stayed around for summer school, but some stayed for another reason. Those who graduated were perhaps the most relieved of all.

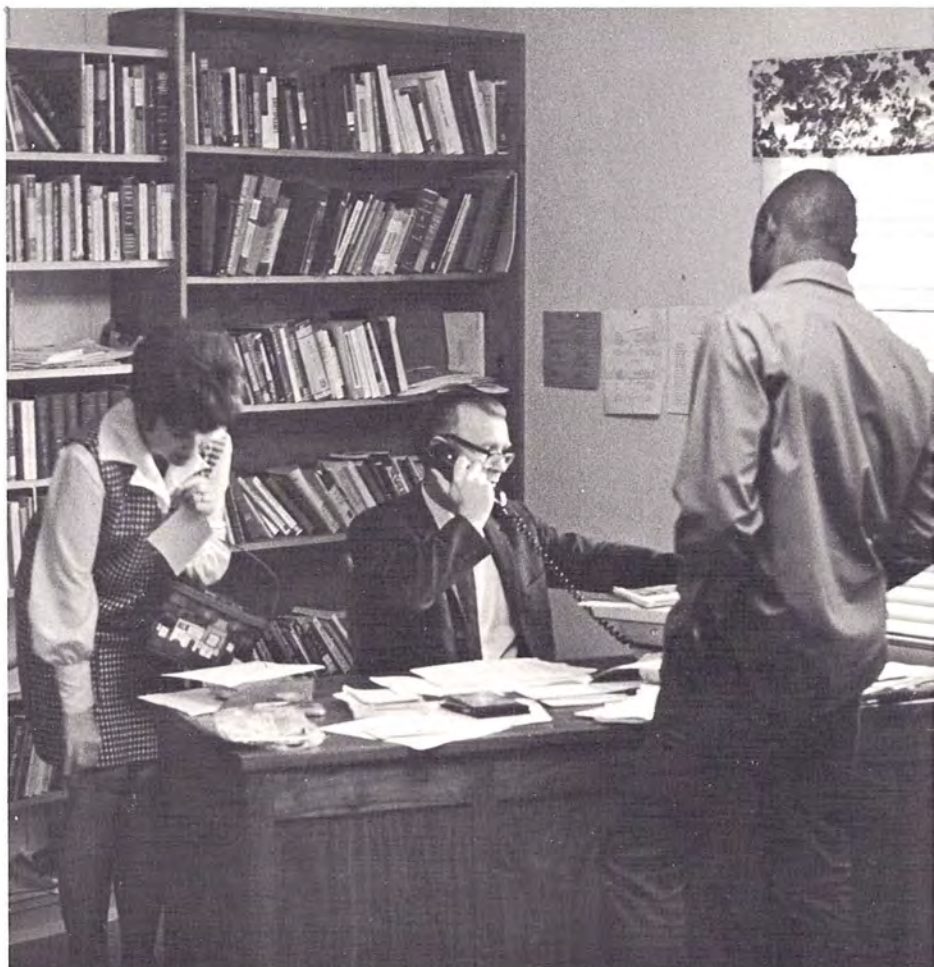


ABOVE: Jim Kelley and Jack Case. . . fair weather provides the atmosphere for a lazy conversation on the lawn in front of Grant. RIGHT: "This Little Hand". . . summer production of the Ouachita Theatre. OPPOSITE: Rosemary Massey . . . during a peaceful break from her summer job at Yellowstone National Park.



registration

Booklets, long lines,
advisors, closed classes,
schedule sheets,
degree plans,
fees to be paid —
this is registration.
If you're lucky,
it can be painless.
It's no easy task to schedule
eighteen hours the way you want
and still have time to lead the life
of a normal human being.

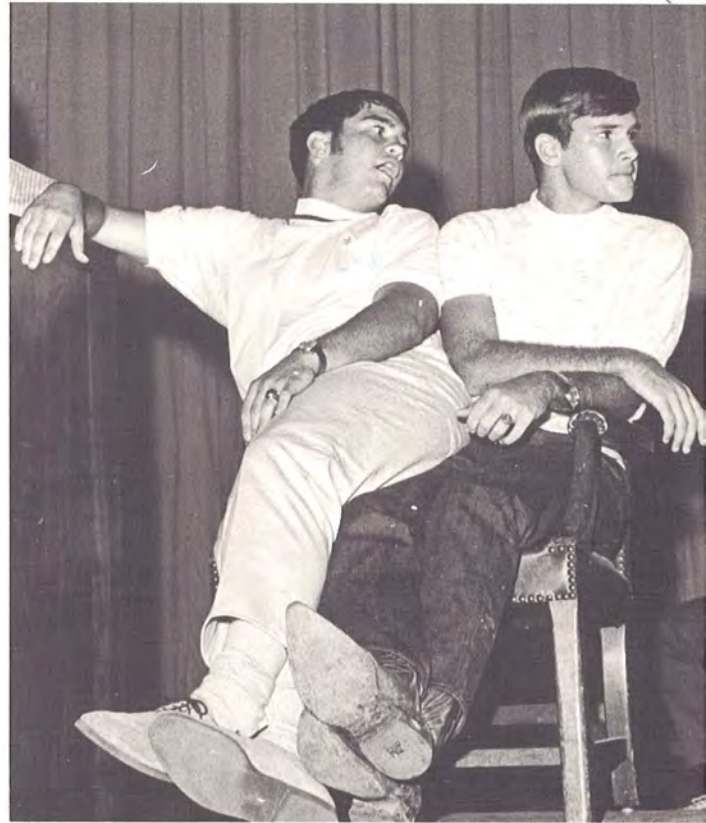




OPPOSITE TOP: Fourth step . . . picking up class cards from the faculty. OPPOSITE BOTTOM: The dean's line . . . plucking of booklet cards and checking student's enrollment status. ABOVE: Business line . . . charges, bills paid and class cards stamped. LEFT: Larry Wilson . . . man on the ID card machine.

freshman orientation

Through the mass of beanies,
confusion,
contradiction and
social club drops,
freshmen saw
the people and ideas
that they were now a part of.



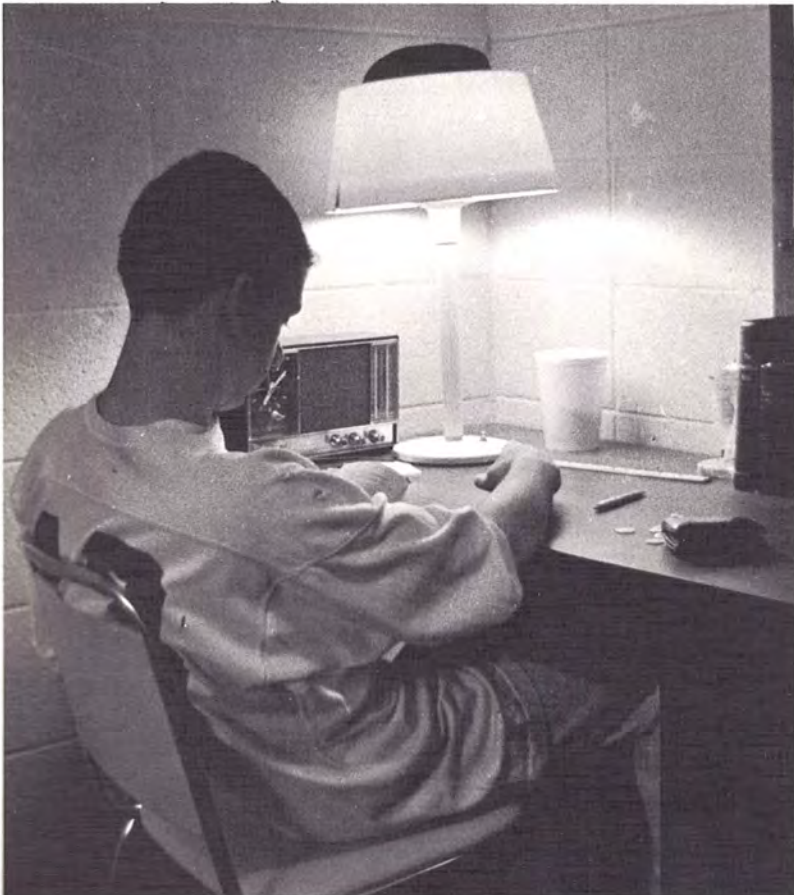


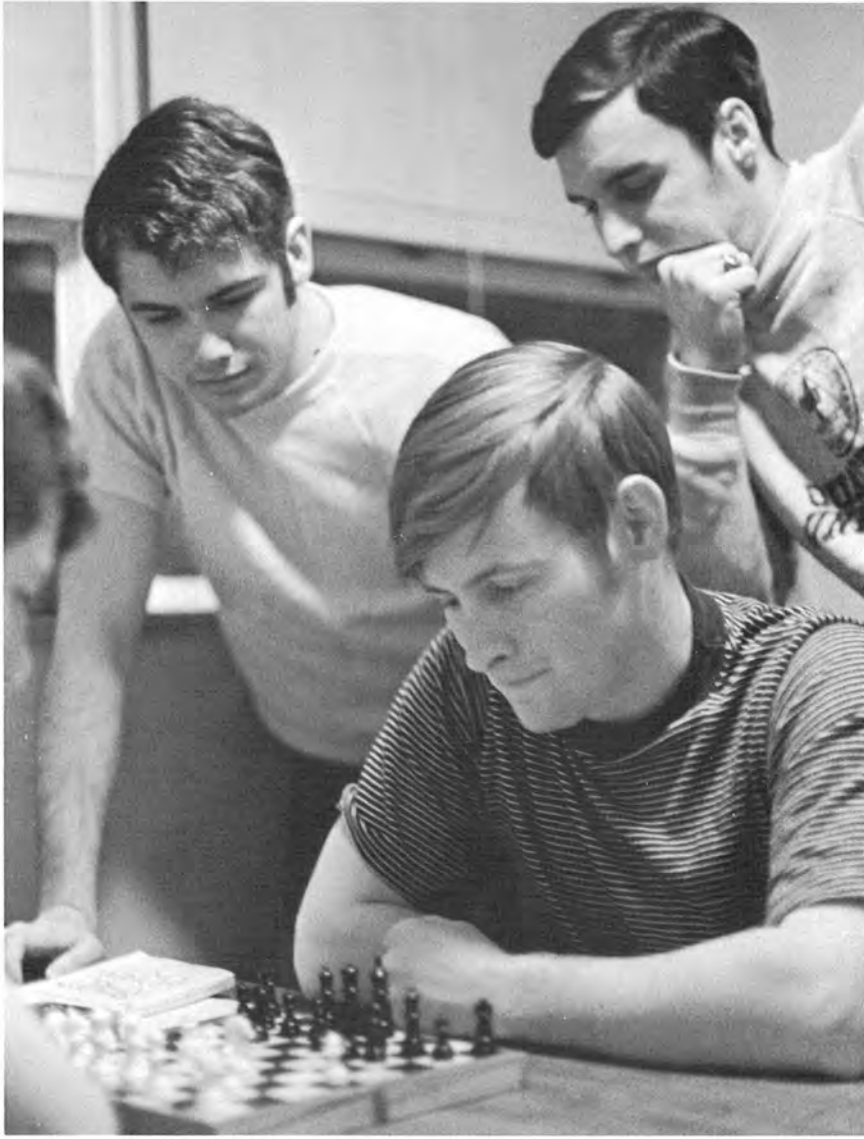
OPPOSITE TOP: John Nixon and Mike Davis . . . on the witness stand during kangaroo court. OPPOSITE BOTTOM: Freshmen sing and shout their pledge . . . to "Mr. Tiger" at 6 a.m. huddles under senior supervision. ABOVE: Dr. Coppinger . . . passes senior jury verdict on to Rex Terry. LEFT: Kay Fudge . . . a "Happy Birthday" chorus just for her during an orientation session.



dorm life

Home: cozy cubicles lined up in halls or coupled in suites. Some new, some older. Occupant's accumulated possessions strewn in defiance of room check. Quiet hours dissolved in the throb of Led Zeppelin. The frustration of occupied phones—on both connections.



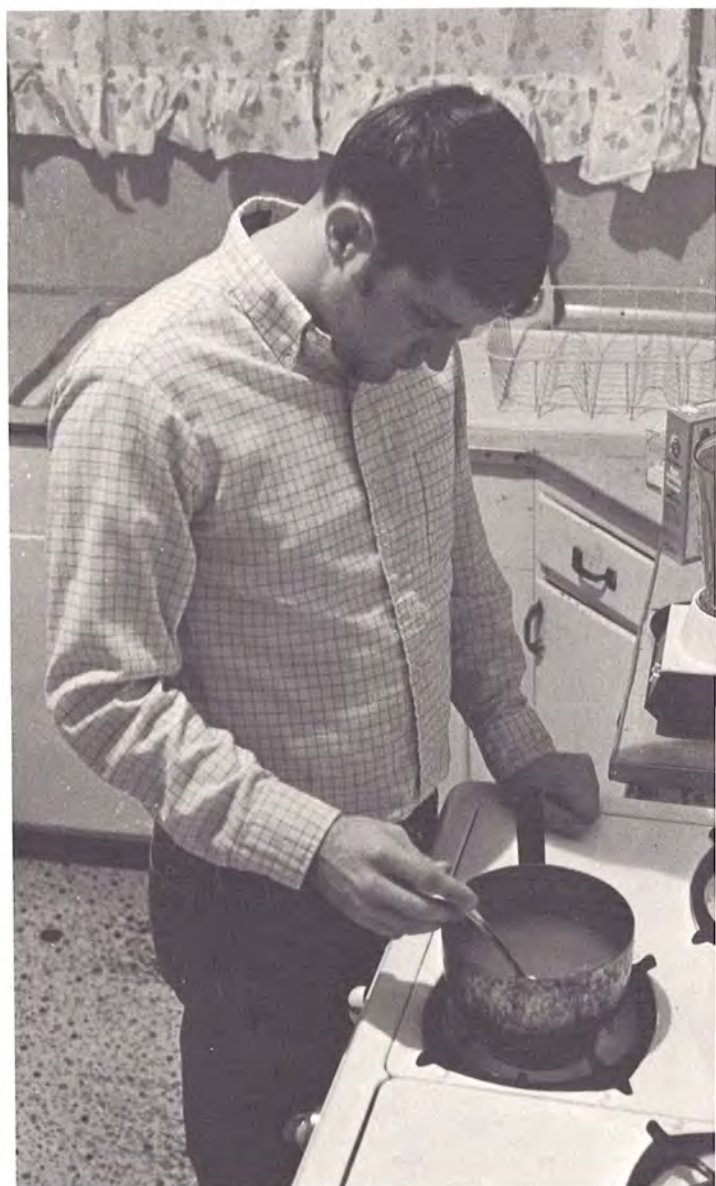


OPPOSITE LEFT: Del Medlin . . . finds that his room in Daniel is an ideal place to study. OPPOSITE RIGHT: Judy Clowers . . . sunshine outside, but there's the art assignment that must be finished that afternoon. ABOVE: Conger Hall . . . provides a quiet place for its residents to take a study break and play chess. LEFT: Sarah Payne . . . rainy Saturdays provide a good excuse to stay inside and catch up on one's ironing.



off-campus life

Life on your own with no "perfect" and no housemother and not even a sign-out sheet.
Life on your own when the rent is always due (so it seems) and the electric bill is a sudden reality.





OPPOSITE TOP: Paul Batson. . .a trailer camp site outside Arkadelphia and a companion dog provide a life of solitude for this off-campus student. OPPOSITE BOTTOM: Bob Harris. . .student turned self-short-order cook. LEFT: Traffic officer Robert Weeks. . .the daily peril of finding an empty student parking zone often ends in frustration, parking in a faculty zone, and a traffic ticket payable in the dean of students office. BELOW: Peggy Carnett. . .entertaining—a social activity of many married students.





ouachita theatre

The tradition of Thespis carried
on under lights and greasepaint
and the history of the
theatre continued. After the
audiences were gone, all that
was left were the memories
of a past performance.
The shouts, applause, triumphs—
all were gone.
The only touch of reality that exists
is the echoing of footsteps on
an empty stage.



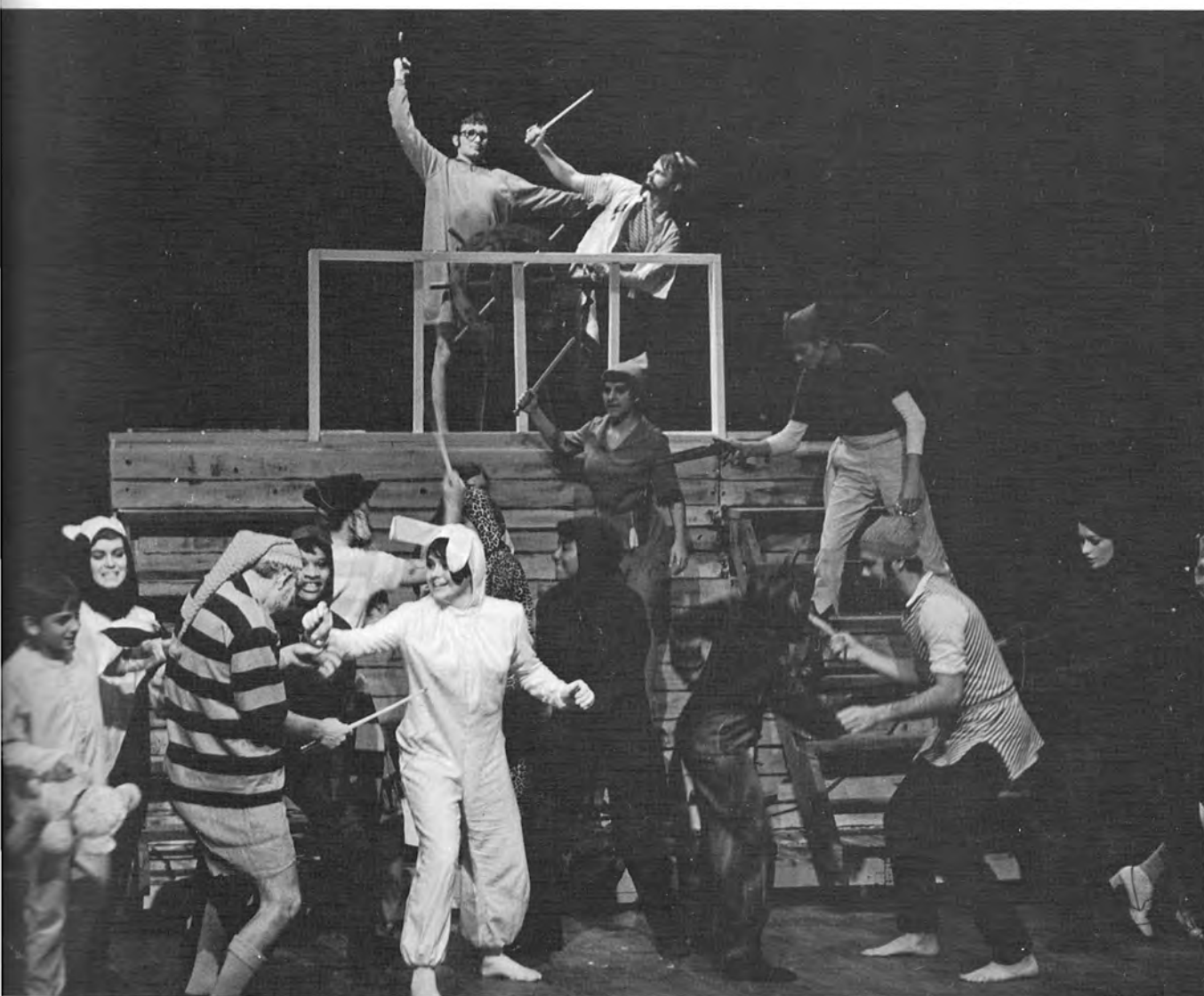


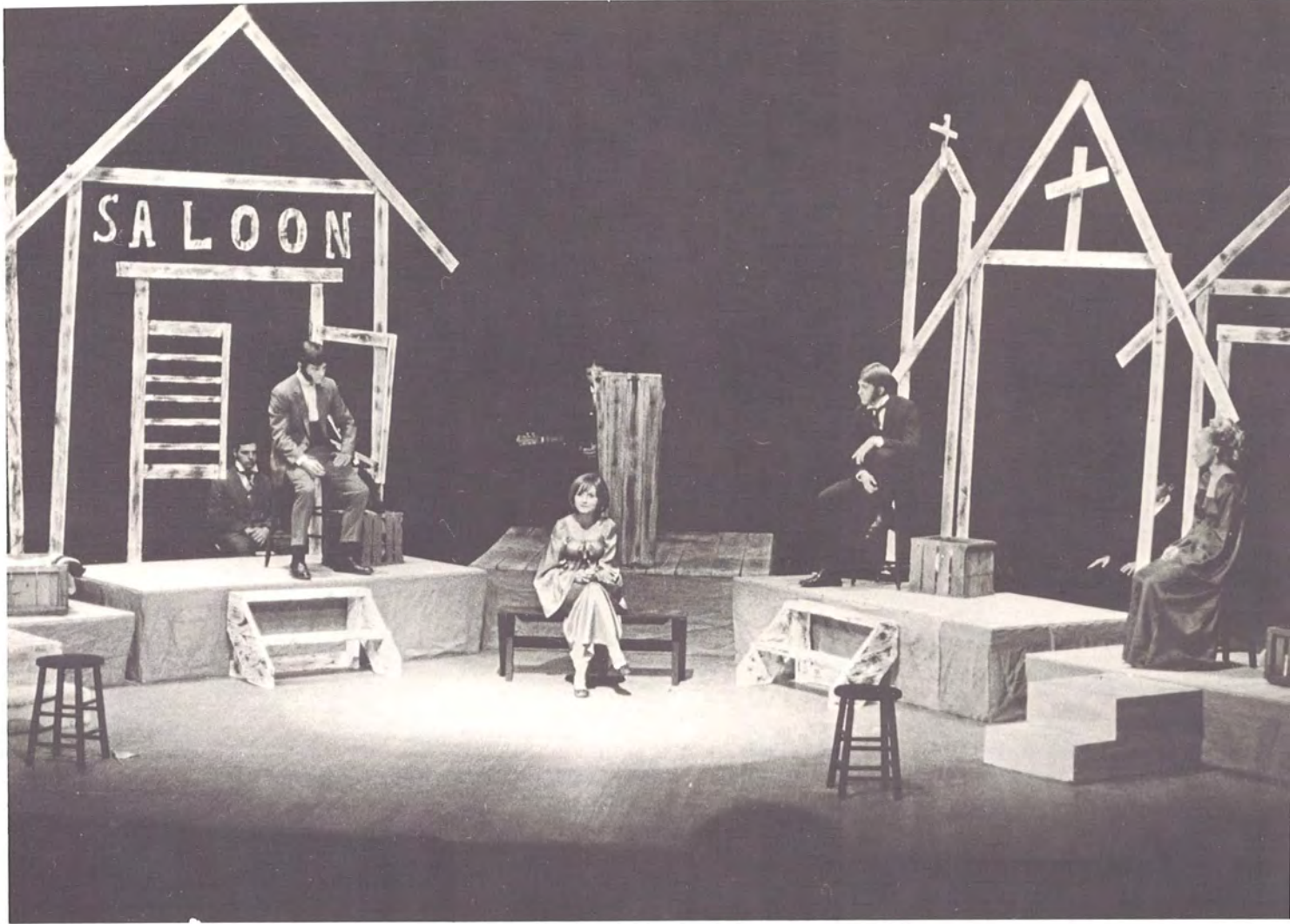
OPPOSITE TOP: Glenda Williams. . . the murderess sorority sister burns a letter that could convict her in the summer production of **This Little Hand**. OPPOSITE BOTTOM: Mary Ann McRae and A. Roy Threet. . . Eurydice implores Creon to be more lenient in his treatment of Antigone in theatre director Dennis Holt's original version of **Antigone**. ABOVE: Cynthia Crews and A. Roy Threet. . . Creon mourns the death of Antigone which resulted from his blind insensitivity. LEFT: Cynthia Crews. . . Antigone compares her fate with that of the brave, free larks scorning the earth in their flight.



ABOVE LEFT: Judy Riddle, Arlyss Friddle, and Mark Ledbetter. . .Leonardo looks away hatefully as his wife and mother-in-law hum lullabies to his baby in Ouachita Theatre's production of **Blood Wedding**. ABOVE RIGHT: Patsy Hill and Jim Elliff. . .The young son explains the necessity of his going into the vineyards to cut the grapes with the most hated of weapons, the knife, in a scene from **Blood Wedding**. RIGHT: Paul Batson. . .angrily demands to know the arrival time of Godot in student director Susan Sutley's version of **Waiting for Godot**. OPPOSITE TOP: Wayne Green and Anne Landes. . .Captain Hook and Peter Pan engage in a sword duel over the status of the Lost Boys, Michael, John and Wendy in the Children's Theatre production of **Peter Pan**, student directed by LeElla Ratcliff. OPPOSITE BOTTOM: The Lost Boys. . .successfully subdue the pirates which have held them captive.









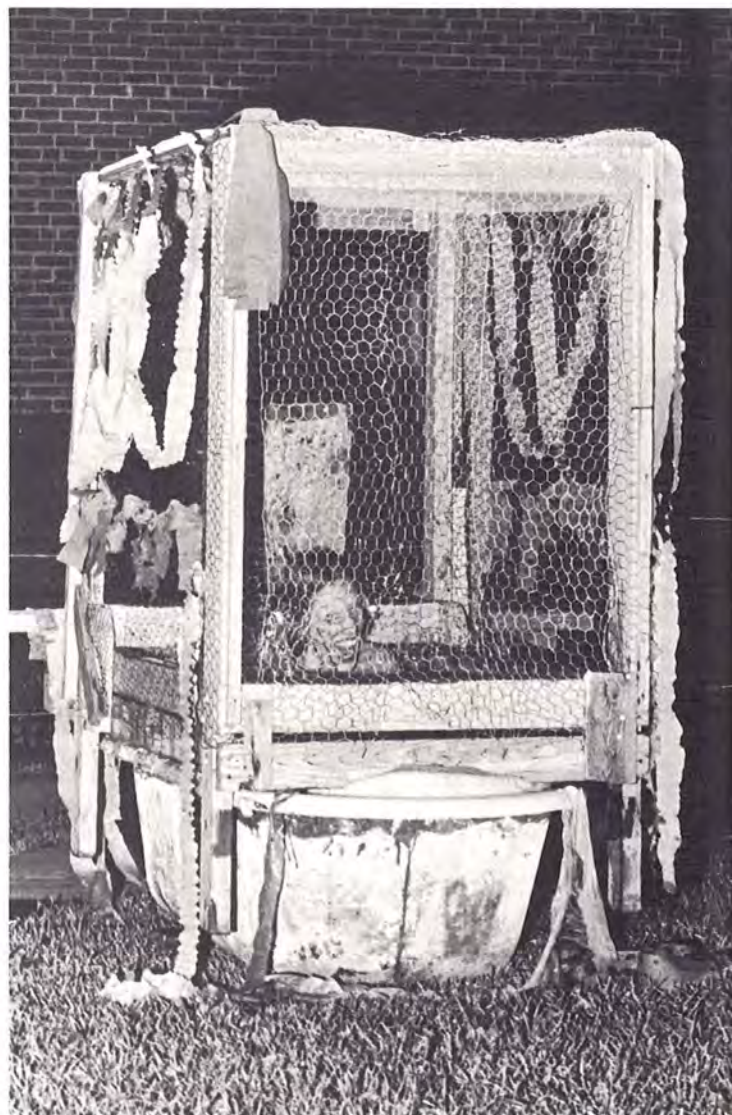
OPPOSITE TOP: John Lindsey, Sharon Smith, Randy Hyde, and Sherry Reynolds . . .The citizens of Spoon River listen as another attempts to make allowances for her missed-lived life in the Reader's Theatre production of **Spoon River Anthology**. OPPOSITE BOTTOM: Sherry Reynolds. . .after having led a poor life in Spoon River, the once beautiful matron transforms into a shriveled, old woman. LEFT: Tom Roberts. . .muses over his life and his death in Spoon River. BELOW: Sharon Smith and Randy Hyde. . . dance to a memory of the happy times in Spoon River. Roy Ambrester directed the production.





twirp week

It wasn't easy to take a boy to dinner or ask him to Gamma Phi's Dogpatch USA, and it seemed out of place opening doors and doing the driving. But during Twirp Week sponsored by the Student Senate, girls found out why they were glad to be girls.





OPPOSITE TOP: Belinda Davis, Sharon South and Bobbi Beeson . . . rubbing in the "no date tonight" feeling to Bill Walker. OPPOSITE BOTTOM: Lynda Nelson . . . a dead-centered ball puts her in the tub. ABOVE LEFT: Jane McCallum and twirp date Bobby Stover . . . trying their luck at balloon darts. ABOVE RIGHT: Grandy Royston, Gammi Phi beau . . . sitting in on the 6-7 p.m. shift at the kissing booth. LEFT: Martha White and Jim Crane . . . a speedway race to the finish with a red or green tootsie pop from Connie Fikes for a prize.





appearances

OPPOSITE TOP: Dr. Lofton Hudson, pastor-author, spoke in December on "Christ and the Sexual Revolution" and "Laying Foundations for Marriage." OPPOSITE BOTTOM LEFT: Ferenc Nagy, a former Prime Minister of Hungary, spoke during an October chapel meeting on "The First of the Intellectuals for Freedom in East-Central Europe." OPPOSITE BOTTOM RIGHT: Georgia legislator Julian Bond spoke in an outdoor September lecture at Henderson State College. Ouachita students were invited to attend by the HSC Student Senate. LEFT: Dr. Charles Venus, economist, lectured in October on Arkansas, national and international issues. BELOW LEFT: Arkansas Congressman David Pryor spoke in a January chapel meeting and to political science classes about "The Student's Interest in Environment." BELOW RIGHT: Dale Millam of the University of Arkansas's music faculty was presented in a guest piano recital in October.



homecoming

Saturday—November 22—1 a.m.:

Weary-eyed girls returned to their dorms after special late permission to work on floats.

Boys continued to fashion chicken wire, crepe paper, boards and nails

until the early hours of "Tigers Have True Grit" day.

2:30 p.m.:

This was the game when everybody arrived early, not only to claim their seats, but also to see the girls.

Sixteen . . . one to be singled out mums, a crown, a queen.





OPPOSITE TOP: Cliff Harris and John Wayne Cunningham . . . a handshake and a coin toss before the homecoming battle with Henderson. OPPOSITE BOTTOM: Becky Oates and Wally Smith . . . stuffing final Friday night touches to the Rho Sigma float. ABOVE LEFT AND RIGHT: Cynthia Riner and Ouida Eppinette . . . official "crepe paper and newspaper ball rollers"—two of many. LEFT: Homecoming Queen Linda Spargo Harris . . . riding atop Rho Sigma's "Stone 'Em Tigers" float in the downtown parade.

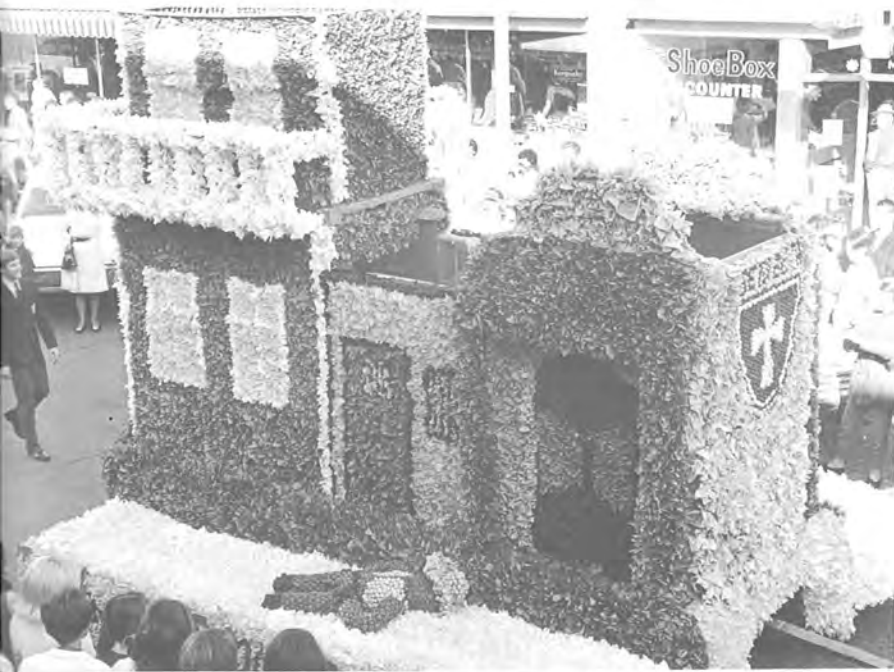


homecoming parade

Saturday—November 22—10 a.m.:
A screaming siren, a drum roll,
and a beginning of the downtown homecoming
parade.

Military VIPs, visiting bands,
floats (questionable by some students),
pretty coeds
and university officials—
they all passed in review.





TOP: "This Town Ain't Big Enough for the Both of Us" . . . Beta Beta's first place award float. MIDDLE: "Dr. Tiger's Reddie Remedy" . . . EEE's second place award float. BOTTOM: "Cheers to Victory" . . . Gamma Phi's third place award float.



RIGHT: Linda Spargo (Harris) was crowned in a ceremony before the Henderson State game. Her sponsor was Rho Sigma Social Fraternity. BELOW: Runners-up to the homecoming crown were: Janet Crawley, Donita Austin, (Queen Linda), Millie Bledsoe, and Kathy Otwell.





Linda Spargo Harris,
Homecoming Queen





Ouachitonians profited from uniting to take a stand for something they thought to be right. Arguments for and against S.E.L.F. weren't the only sign of a thinking, healthy campus. As expected, the Vietnam War and the draft stirred up some activity in the form of two separate moratoriums—the Pro-Nixon Moratorium (bottom) backing the President's policies of a gradual withdrawal from Vietnam and the National Moratorium (middle) to show that a sizeable number of people wanted immediate peace in Vietnam. There was also a Henderson Moratorium (top) sponsored by the junior class to show support for the Tiger football team.



A student's Saturday seems uniquely his own. A blessedly blank day on a full schedule. The cafeteria staff provided more campus picnics. Fall football games topped off a leisurely day of sunning at the river or one spent in the dorm studying.





With little snow fall, but lots of rain, winter fell on Arkadelphia. The dampened weather seemed to only spur campus activity. There was the Singers and the Ouachi-tones Concerts, the EEE's "Coolside of Yuletide", organization's parties and dreaded finals after the Christmas break.





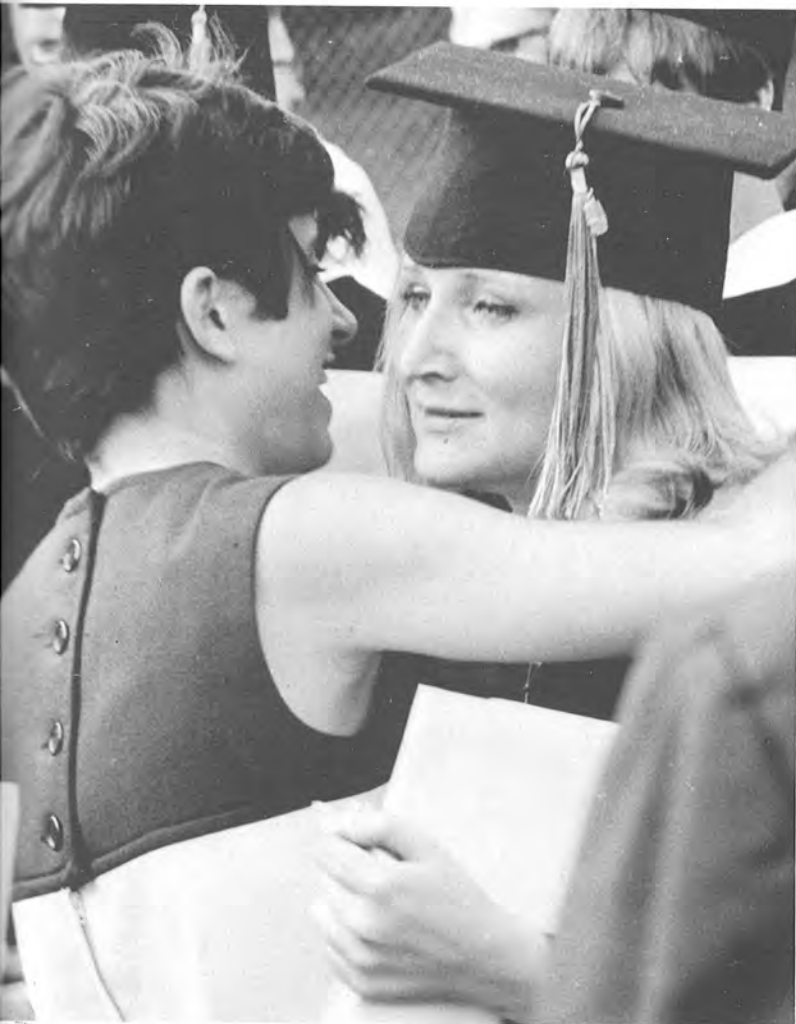
OPPOSITE TOP: The Singers. . .practicing for their winter concert in Mitchell Hall. OPPOSITE BOTTOM: LeElla Ratcliff and Gloria Price. . .playing Santa and the kid at the "Coolside of Yuletide." LEFT: Chris Crosby. . .entertaining at the Ouachi-tones Concert. BELOW LEFT: Ouida Eppinette. . .provided music for several winter activities including the "Coolside of Yuletide", the Ouachi-tones Concert and numerous organization's parties. BELOW RIGHT: Carol Hargis and Kay Cook. . .pause for some chilled conversation amidst winter's only real snowfall.





After a few false starts, spring finally got here. And with it the campus became more alive than ever. Some enjoyed the weather by just being with another person at a cook out. Others participated in Religious Emphasis Week or the commissioning of ROTC cadets. As spring turned to summer, seniors anxiously awaited graduation ceremonies.

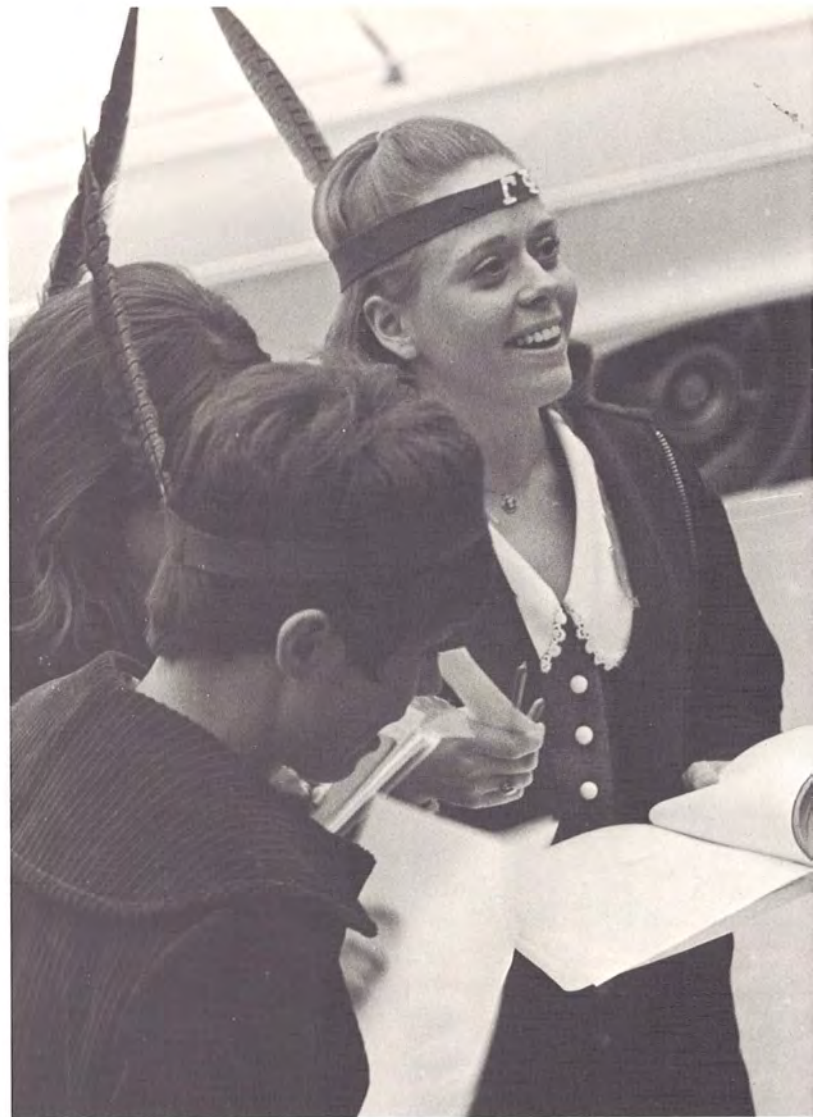


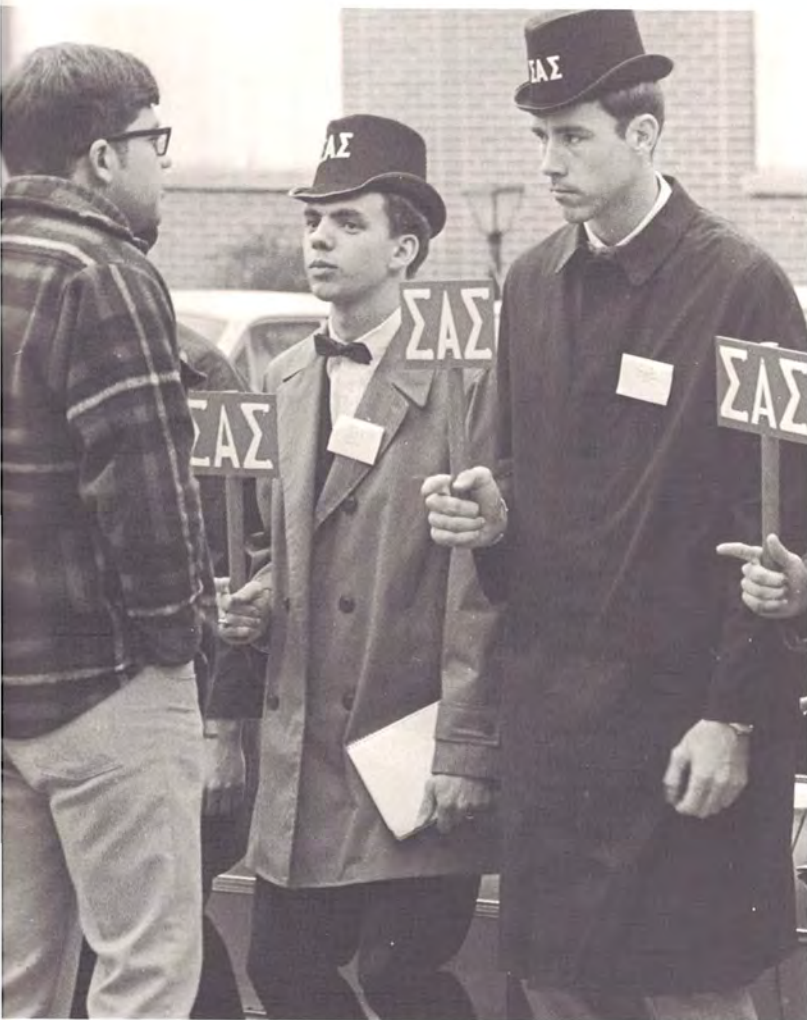
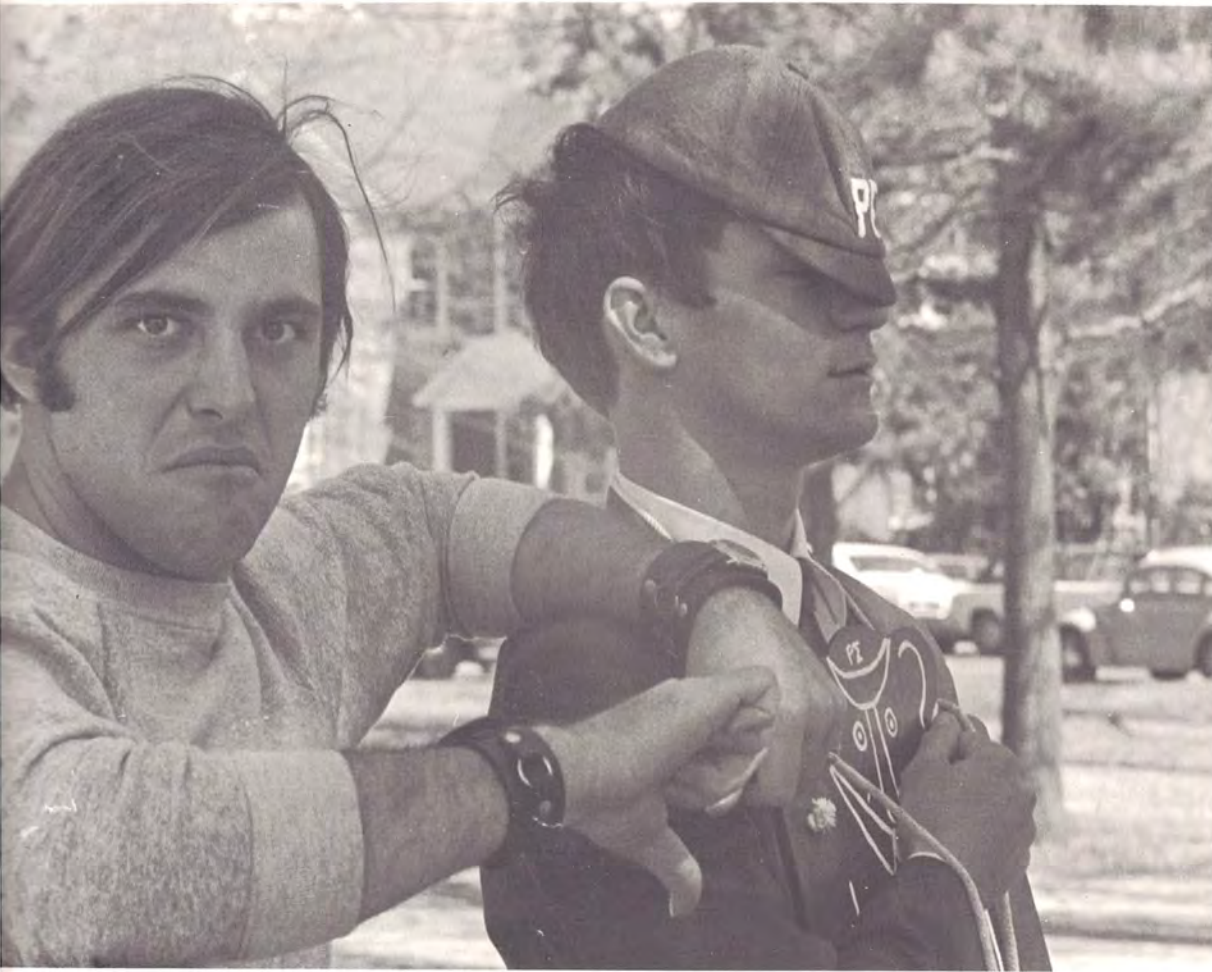


OPPOSITE TOP: Dr. Grant, Rev. Phillip May, Rev. Richard Cunningham and Merv Mims, all REW speakers. . . take time for some conversation at a reception in the Drawing Room following Monday's chapel service. OPPOSITE BOTTOM: A sunny day at the park. . . journalism students gather around the grub table during a late afternoon impromptu picnic. ABOVE: Bill Baxter, Ronnie Collins, Mike Grisham and James Hurst. . . were among those ROTC cadets sworn in as officers in the U.S. Army in commissioning ceremonies in Verser Drama Center. LEFT: Debbie Watson. . . congratulates Nell Dickerson following graduation exercises, at A.U. Williams Field.

pledging

March 9-14.
Rush was over and social club
pledging began. About 100
Ouachitonians began the week of
menial tasks to show their loyalty
to their prospective club. A few
less made it completely through.





OPPOSITE TOP: Gamma Phi pledges Jackie Jones and Missy Wheatley. . . seek to get their pledge books signed by members of Rho Sigma. OPPOSITE BOTTOM: EEE members. . . entertain interested rushees with a "patriotic party" in the Drawing Room. ABOVE: Rho Sigma member Mike Pellizza. . . expresses disapproval with pledge Steve McMichael's manner of addressing him. LEFT: Del Medlin and Frank Mitchell, Sigma Alpha Sigma pledges. . . line up for "inspection" by member Dave Mizell before entering the cafeteria for dinner.

miss obu pageant

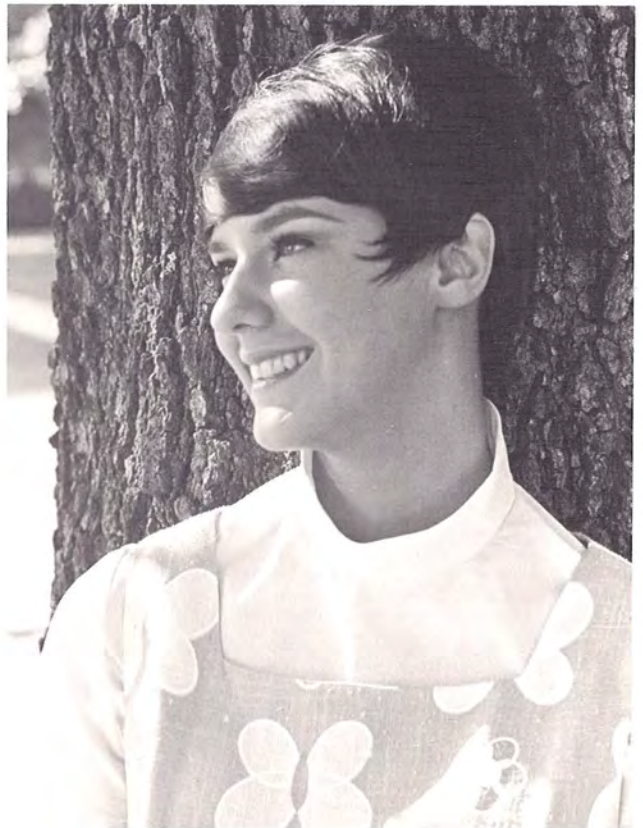
Blue Key, national honor fraternity for men, sponsored the Miss Ouachita Baptist University Pageant for the third year. The pageant consisted of competition in evening gowns, talent and swimsuit, with talent counting 50 per cent. A panel of out-of-town judges selected Marijo Kirkland of Deport, Texas, as the University's official entry in the Miss Arkansas Pageant.

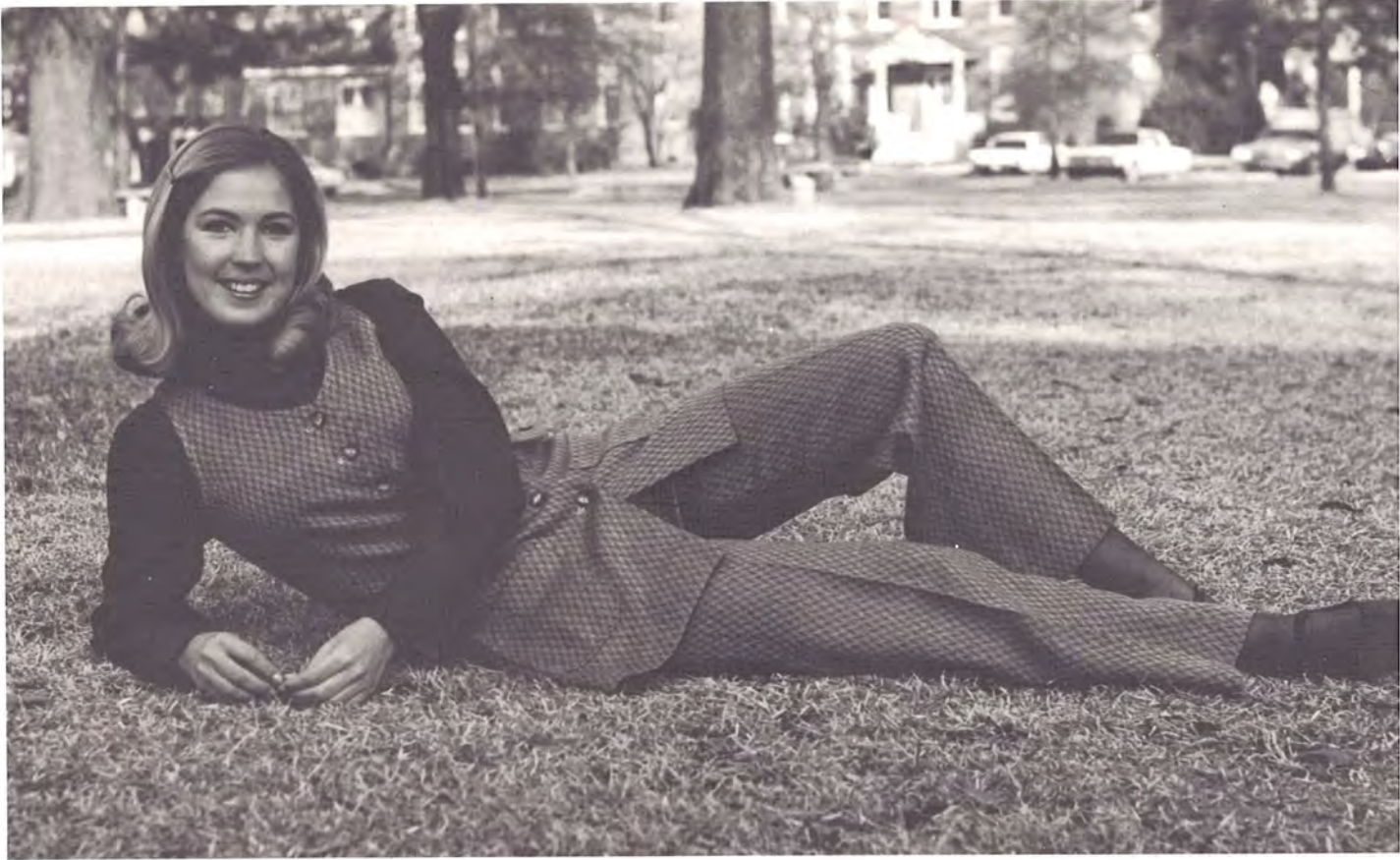
RIGHT: Major Dean Looney and Sharon Evans. . .master and mistress of ceremonies for pageant night. BELOW: Straight backs and steady smiles. . . characteristic of girls in the swimsuit division.





Marijo Kirkland,
Miss OBU 1969





miss obu alternates

ABOVE: Margie Royston, first alternate . . . sang "The Lonely Room." RIGHT: Sharon Gray, second alternate . . . sang a melody of "Quanto Men'Vo" and "Who Am I?". OPPOSITE LEFT: Donita Austin, third alternate . . . sang and danced the hula. OPPOSITE RIGHT: Ginger Murdoch, fourth alternate . . . sang "What is a Woman?"





campus beauty pageant

Girls engaged in conversation,
sparked by nervous laughter.
All tagged by numbers instead of names.
Modeling for and questioned by judges,
and a pageant for the final judging.
A reception given by Rho Sigma Social Club.
All this, to select four "Campus Beauties".





OPPOSITE TOP: Patsy Hill . . . striking a pose in the afternoon modeling session. OPPOSITE BOTTOM: Debbie Phillips and Judee Thompson . . . preliminary interview with the judges. LEFT: Rosemary Massey, luncheon hostess . . . an hors d'oeuvre then a finger sandwich and a cup of tea for Margie Royston. BELOW LEFT: Glen McNeal, pageant director . . . discussing last minute plans for pageant night with emcee Delbert Palmer of Little Rock. BELOW RIGHT: Delbert Palmer and LeElla Ratcliff . . . host and hostess for the evening pageant called "Starshine."





Donita is a senior English major from Mena. Her sponsor was the Young Democrats.





campus beauty

Donita Austin





Patsy is a senior speech-drama major from Sterling, Oklahoma. She was sponsored by the senior class.





campus beauty

Patsy Hill





Margie is a junior psychology and sociology major from Hope. Her sponsor was Rho Sigma Social Fraternity.





campus beauty

Margie Royston





Linda is a sophomore elementary education major from Batesville. Blue Key was her pageant sponsor.





campus beauty

Linda St. John



who's who

Many deserving, but only 27.
Each selected by the Student Senate
and the faculty and administration;
all selected on the basis of scholarship,
participation and leadership
in academic and extracurricular activities,
citizenship and service to the university
and future promise.

DONITA AUSTIN . . . Gamma Phi
. . . CCU . . . cheerleader . . .
homecoming court . . . English
major.

MARK BOWLES . . . Student Cur-
riculum Committee . . . honors
program . . . biology and psychol-
ogy major.

MARK COPPENGER . . . senior
class president . . . philosophy
major . . . National Collegiate
Players . . . band . . . Alpha Chi . . .
sophomore and junior class senator
. . . Blue Key . . . tennis . . . swim-
ming . . . Scabbard and Blade . . .
Beta Beta.

JOHN WAYNE CUNNINGHAM . . .
Rho Sigma . . . tailback on the foot-
ball team . . . physical education
major.



Donita Austin



Mark Bowles



Mark Coppenger



John Wayne Cunningham



April Dunham Lane



Jim Elliff



Doug Freeze



David Glaze



Allen Hampton

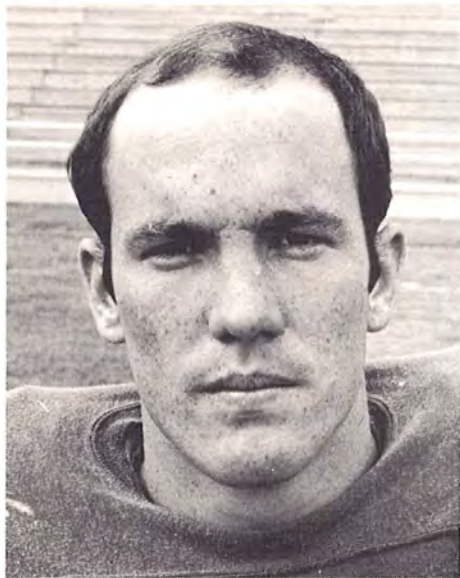
APRIL DUNHAM LANE . . . Gamma Phi president . . . elementary education major . . . Alpha Chi . . . Kappa Delta Pi . . . SNEA.

JIM ELLIFF . . . speech and drama major . . . Beta Beta . . . Singers . . . National Collegiate Players . . . freshman class president.

DOUG FREEZE . . . All-AIC football selection . . . track . . . business administration major . . . new AIC career record in number of pass receptions.

DAVID GLAZE . . . music major . . . woodwind quintet . . . band . . . Musician's Guild . . . honors program . . . Phi Mu Alpha Sinfonia . . . drum major . . . Madrigals . . . Singers.

ALLEN HAMPTON . . . BSU president . . . Beta Beta . . . philosophy major . . . Alpha Chi . . . honors program.



Cliff Harris



Linda Spargo Harris

CLIFF HARRIS . . . Rho Sigma vice president . . . All-AIC defensive halfback . . . track . . . Sigma Gamma Sigma . . . math major.

LINDA SPARGO HARRIS . . . EEE . . . English major . . . Alpha Chi . . . cheerleader . . . junior class officer . . . Ouachitonian Beauty . . . homecoming queen and court.

PATSY HILL . . . Gamma Phi . . . National Collegiate Players . . . Tigerettes . . . Ouachitonian Beauty . . . speech and drama major . . . SNEA . . . tennis . . . Kappa Delta Pi . . . outstanding senior woman.

KATHY KNIGHT . . . cheerleader . . . math major . . . Ouachitonian Beauty . . . Student Senate . . . Gamma Phi . . . ROTC brigade sponsor . . . homecoming court . . . Sigma Gamma Sigma.

DANIEL LUMPKIN . . . Beta Beta . . . Sigma Gamma Sigma . . . math major.



Patsy Hill



Kathy Knight



Daniel Lumpkin

BILL MASSEY . . . Student Senate president . . . political science major . . . Beta Beta . . . Blue Key.

DAVID MIZELL . . . Sigma Alpha Sigma . . . Blue Key . . . ROTC Battalion commander . . . math and English major . . . Scabbard and Blade.

ANNE NOWLIN . . . Gamma Phi . . . honors program . . . Sigma Tau Delta . . . SNEA . . . Kappa Delta

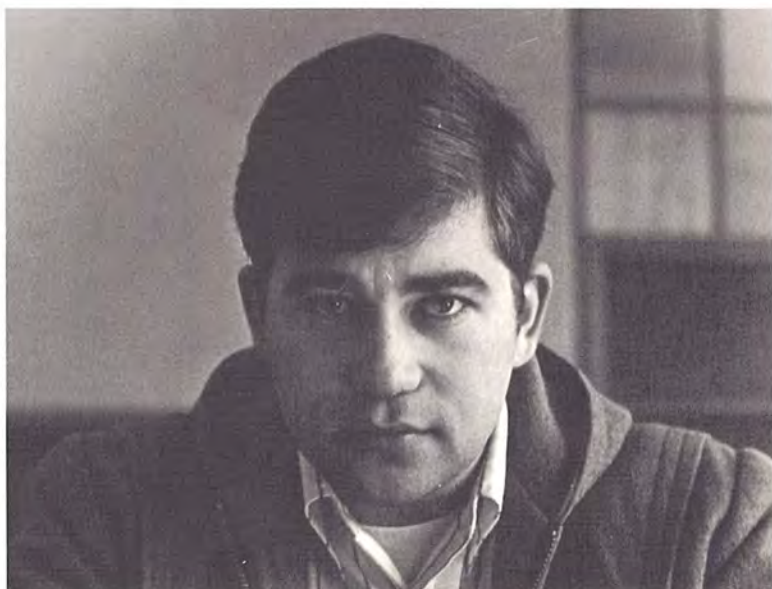
Pi vice president . . . band . . . English and sociology major.

PHIL PETERS . . . Beta Beta . . . Student Senate . . . Blue Key . . . business major . . . sophomore class president.

DENNIS RAMSEY . . . Rho Sigma president . . . Blue Key vice president . . . Circle K . . . political science major . . . Young Democrats . . . Inter-Social Club Council.



Bill Massey



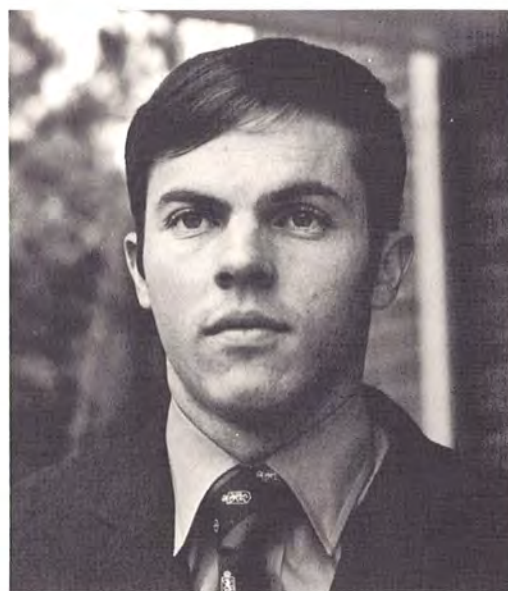
David Mizell



Anne Nowlin



Phil Peters



Dennis Ramsey

GRANDY ROYSTON . . . Rho Sigma president . . . biology major . . . Gamma Phi beau.

ROGER SCHOENIGER . . . Ministerial Alliance . . . honors program . . . religion major.

BOBBY STOVER . . . student news bureau director . . . journalism major . . . Signal editor . . . Student Curriculum Committee chairman . . . 1969 President's Award.

A. ROY THREET . . . National Collegiate Players . . . Beta Beta president . . . psychology major . . . Blue Key treasurer . . . Student Curriculum Committee . . . Ripples editor . . . Pershing Rifles . . . Sigma Tau Delta vice president.

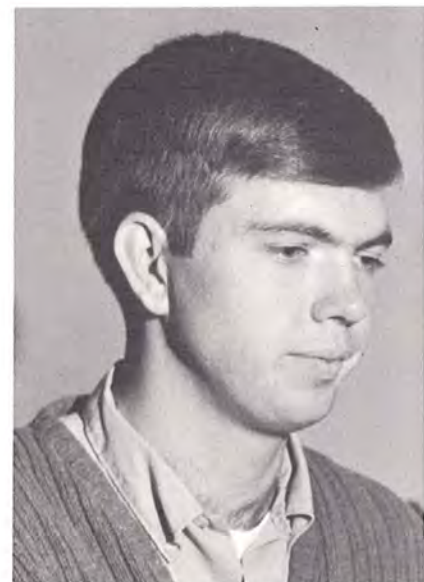
BILL VISER . . . Rho Sigma chaplain . . . junior class president . . . Student Senate . . . psychology and religion major . . . Young Democrats president . . . Ministerial Alliance president.



Roger Schoeniger



Grandy Royston



Bobby Stover



A. Roy Threet



Bill Viser



Bill Walker



Martha White



Cynthia Wilson

BILL WALKER . . . Blue Key . . . Mental Health Club president . . . Danforth nominee . . . tennis . . . Gamma Phi beau . . . Inter-Social Club Council president . . . psychology major . . . Student Senate . . . Sigma Alpha Sigma president.

MARTHA WHITE . . . Gamma Phi . . . Faculty-Student Judicial Board . . . home economics major . . . AHEA . . . Alpha Chi . . . SNEA . . . Kappa Delta Pi . . . AWS.

CYNTHIA WILSON . . . Arkansas Collegiate Academy of Science president . . . honors program . . . Gamma Sigma Epsilon . . . Alpha Chi . . . Chemistry Club . . . professional chemistry major.

THE INDIVIDUAL
outshines any group
that can be organized
But groups contribute to the
metamorphosis of an
individual.

