



JIM MAXWELL

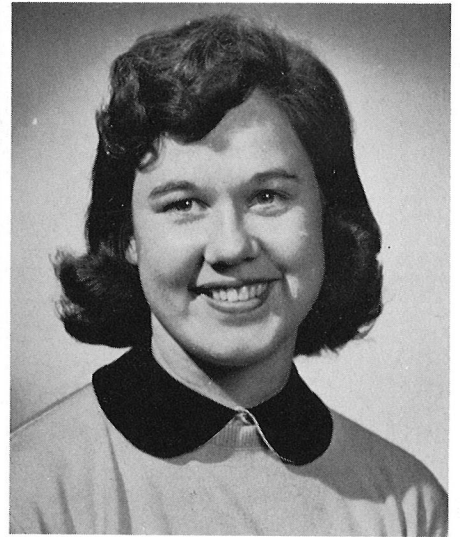
Editor



CAROLE PEARSON
Assistant Editor



GENE BLAGG
Layout Editor

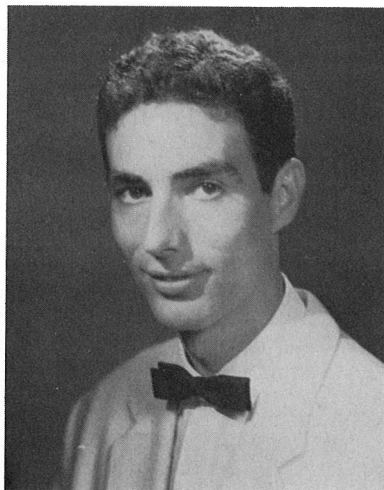


JANE MIDDLEBROOKS
Layout Editor

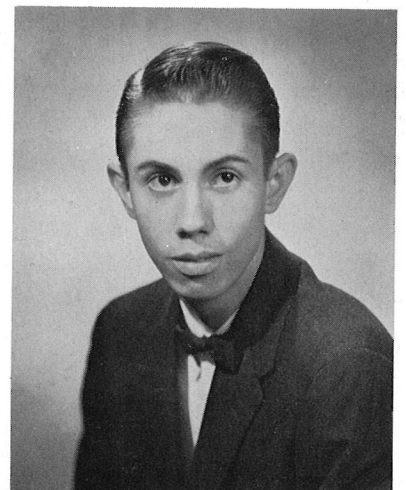
Ouachitonian Editorial Staff



DOYLE DANIELS
Photographer

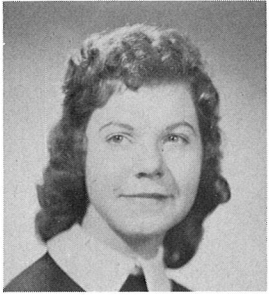


JOHNNY JENKINS
Photographer



JOHN BAKER
Photographer

Ouachitonian Staff



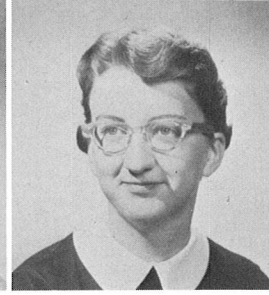
Aloah Henderson



Lynn Nunnally



Edwina Beasley



Betty Rea Allen



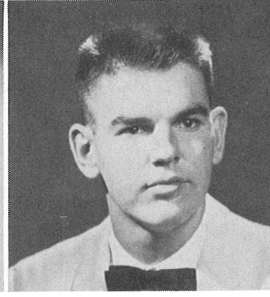
Julia Morris



Aggie Davies



Melba Faulkner



Ken Hughes



Eddie Lou McOwen



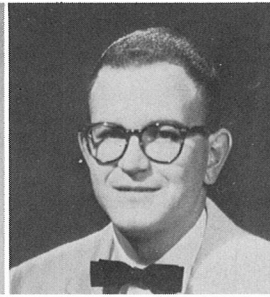
Nan Spears



E. B. Duke



Marie Lambert



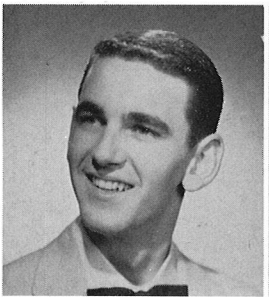
John Paul Archer



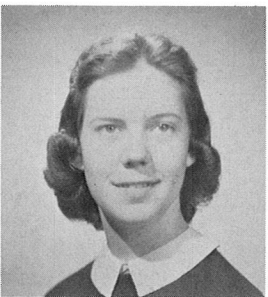
Patsy Keller



Bebe Booker



Gene Dolby



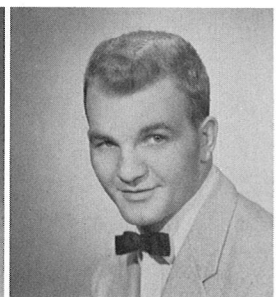
Billie Bob Johnson



Beth Butler



Polly Nation



Denny Bray



Sandy Wallace



Marion Sadler



Barbara Shields

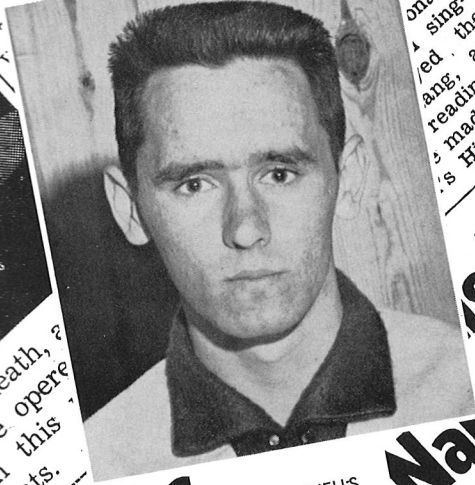


Helen Reed

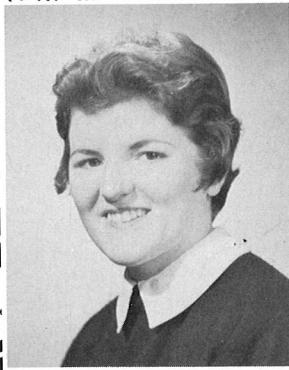


Jim Wallis

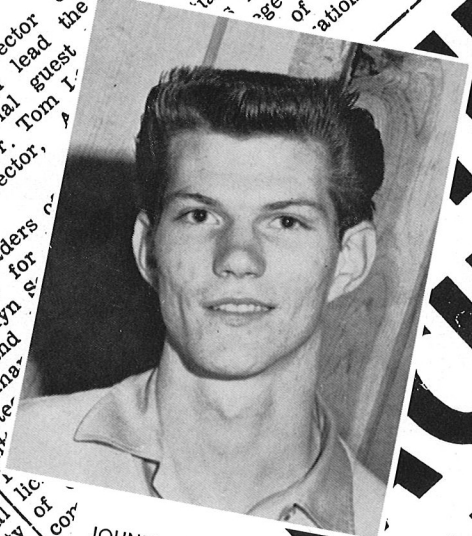
Signal Staff



GEORGE WELLS
Co-Editor



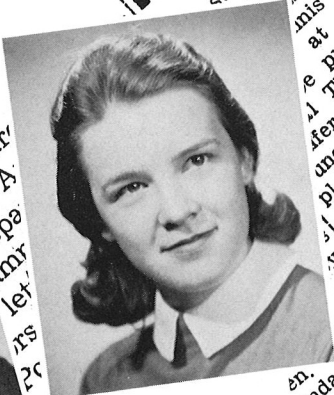
CHRIS ZWAHLEN
Managing Editor



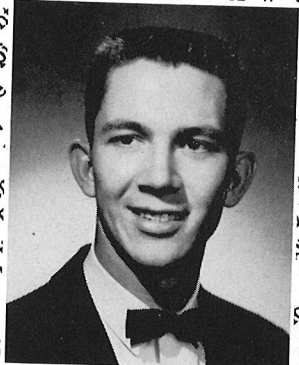
JOHNNY PATTERSON
Co-Editor



DROLLENE PLATTNER
News Editor



MARCIA BOWDEN
Feature Editor



JIM BYRD
Business Manager



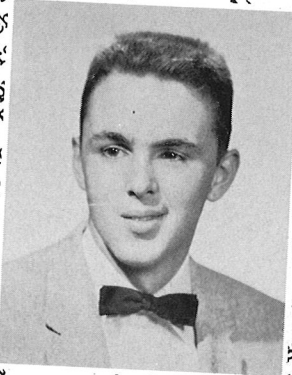
MARY HORTON
Feature Editor



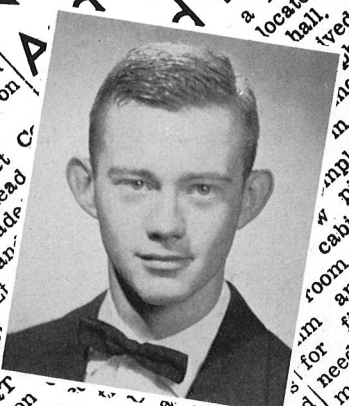
JOHN BAKER
Photographer



JIM WALLIS
Art Editor



JOE DEMPSEY
Art Editor



DOYLE DANIELS
Photographer

Names in 'An'

Letters to Prospective Student
Gall Taylor is in charge of letters to those graduates who have indicated with her on the committee Jackson, John-B, Jean Self, and Loren

Tours
Eddie Strong, PMS&T and Mr. Don George of the campus liams, Dan Southernland, and the student body in charge of setting up a conference for the

Ripples

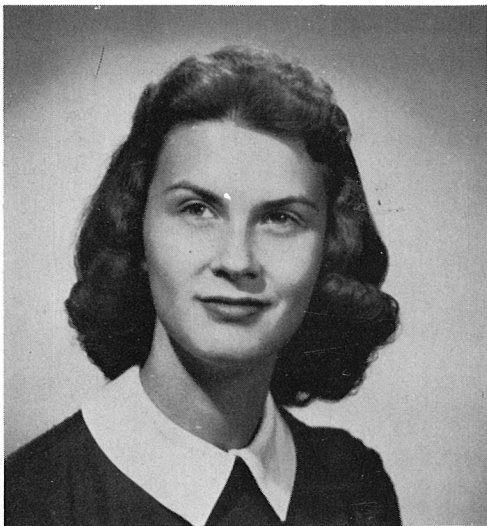


BETTY REA ALLEN
Editor

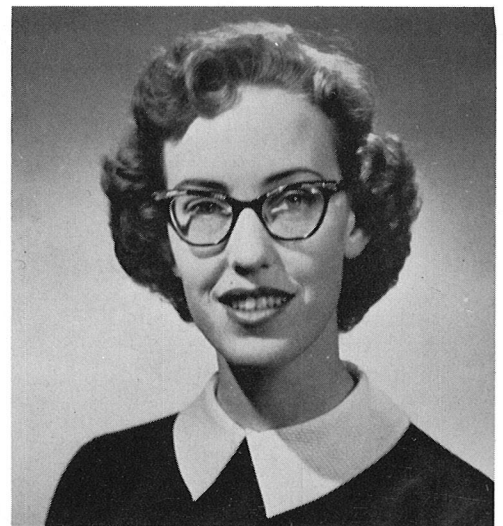


GAIL TAYLOR
Assistant Editor

The Ripples is a student literary publication published bi-annually by Sigma Tau Delta, containing contributions by Ouachita students and faculty.



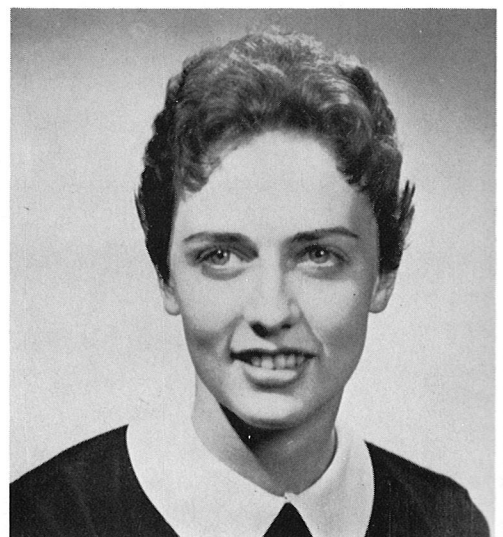
SHELBY FUNK
Poetry Editor



FAITH EVANS
Essay Editor



CAROLE CROCKETT
Short Story Editor



AGGIE DAVIES
Art Editor

Religious Organizations

Baptist Student Union

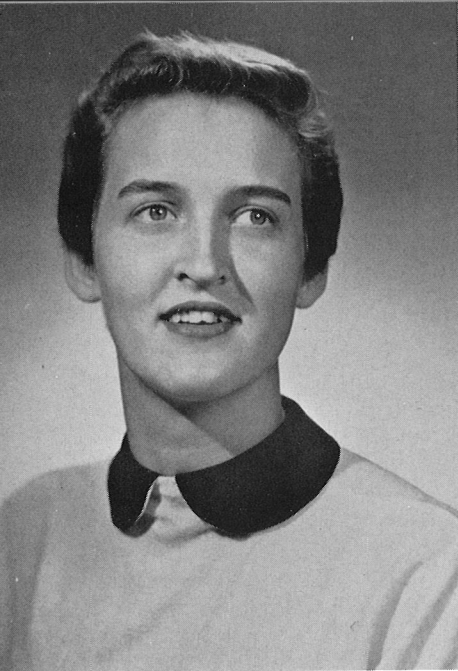
Ministerial Association

Life Service Band

Young Women's Association Council

Mission Band





Baptist

Student

Union

JANE BURROUGHS, *President*

The Baptist Student Union is the largest student organization at Ouachita. It is also one of the most active, sponsoring all religious organizations and activities. Correlating the school with the church, conducting vespers, the Thanksgiving and Valentine banquets, Religious Emphasis week—are just a few phases of Baptist Student Union work.

The publication of the B.S.U. at Ouachita is appropriately titled "The Link."

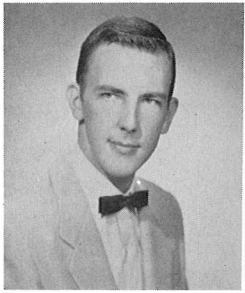


Dr. Phelps addresses a B.S.U. breakfast.



Long meetings of the Greater Council, composed of the executive, freshman council and committee members, are necessary to sponsor the many activities.

Executive



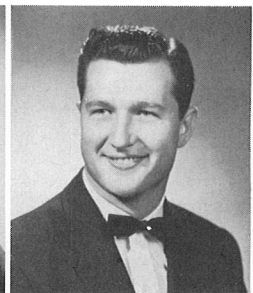
DICK NORTON
Promotional Chairman



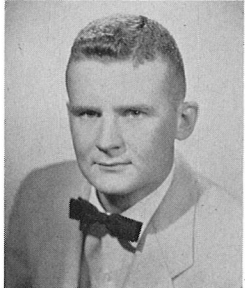
WINNIE SMITH
Secretary



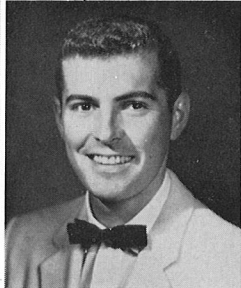
ROGNA PETERSON
Treasurer



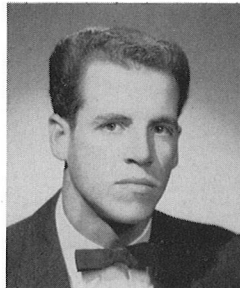
CHARLES WRIGHT
Music Chairman



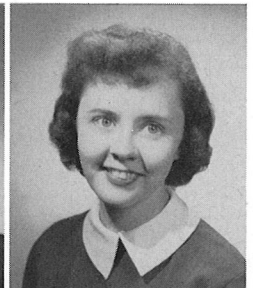
GEORGE O'NEIL
Devotional Chairman



JIM MAXWELL
Publicity Chairman



RONNIE HAYWORTH
Extension Chairman



LINDA DAY
Publication Chairman

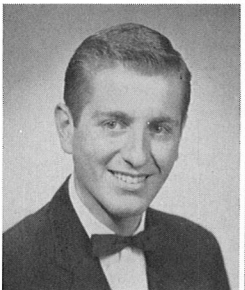


CAROLYN ROYAL
Social Chairman

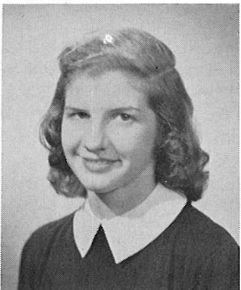


JO ANN BLANCETT
Social Chairman

Freshman



CARL KELL
President



SANDY YOUNG
Vice President



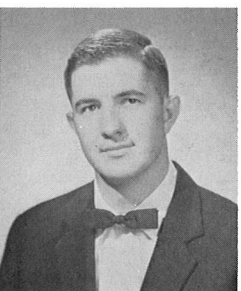
NAN SPEARS
Secretary



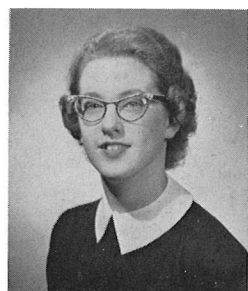
POLLY NATION
Treasurer



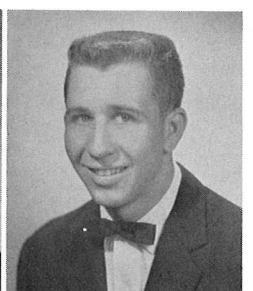
MARTHA CARTER
Social Chairman



DAVID HOLT
Music Chairman



JULIA MORRIS
Publicity Chairman



MICKEY MCGUIRE
Devotional Chairman

Council

Council

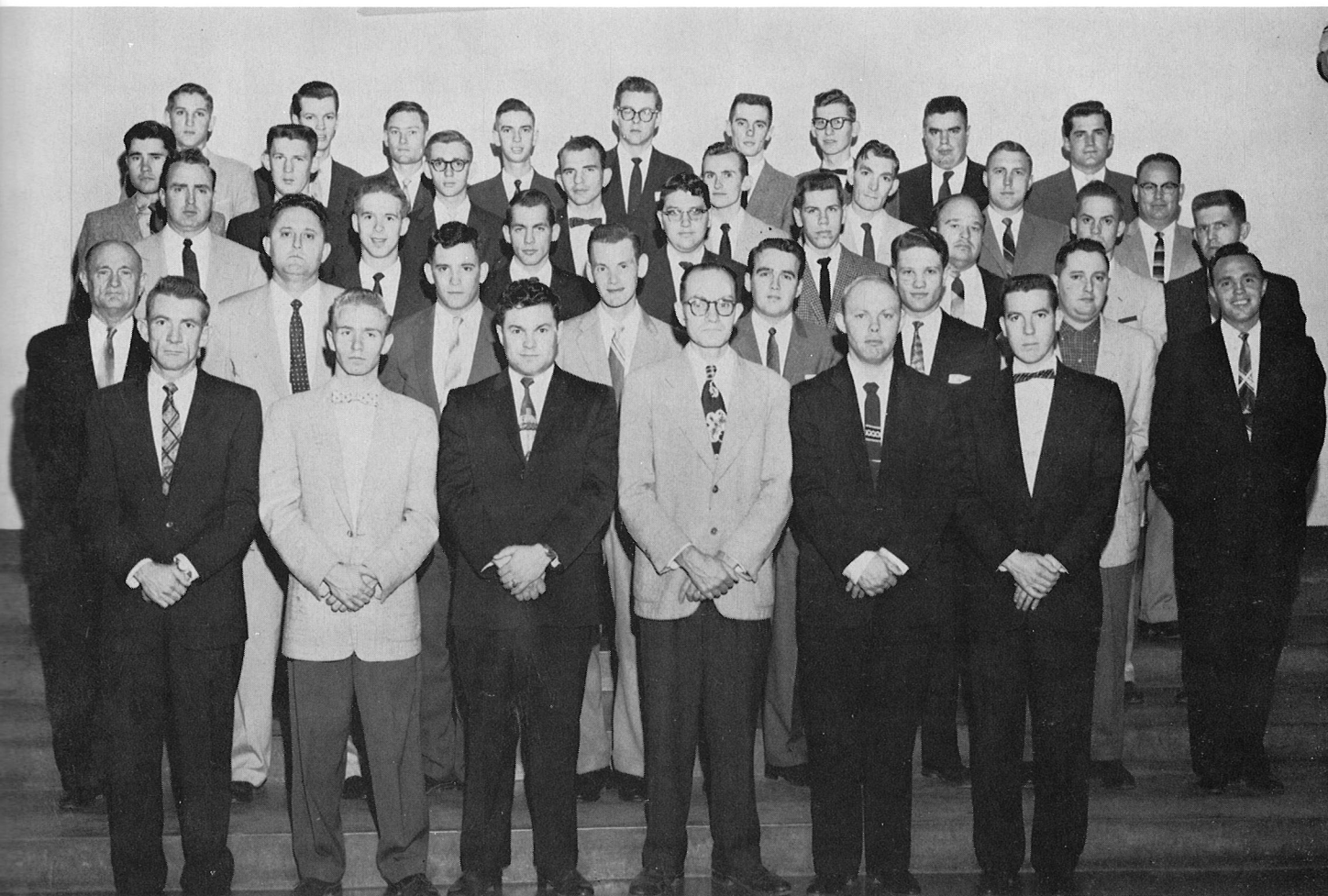


First row: George Watanabe, Jimmy Whitlock, Jim Ryan, Robert Miles, Andy O'Kelley, Ola Forbes, Jr., Zane Chesser, Don Alan Nall. Second row: Charles Tittle, Richard Lamborn, Nolan Finch, Larry F. Trippel, Roy E. Baker, E. Gene Davis, Dr. R. A. Coppenger, co-sponsor; Dr. Cecil Sutley, co-sponsor. Third row: John E. O'Neal, Ben W. Bledsoe, Ernest A. Whitten, Thomas E. Bourland, Bob R. Duffer, Bernard Ford, Theo Cook. Fourth row: Frank K. Taylor, Elder L. Ward, Paul Parker, John Fox, Roy Simpson, Ernest Coleman, Milburn Hill, Dewey Barefoot. Fifth row: Joseph Hogan, Clifford Moeller, L. B. Jordan, Richard Adams, Wesley Womack, Kenneth Daugherty, Don Durden, Jr., Bob Peeler.

FIRST SEMESTER OFFICERS

President RICHARD LAMBORN
 First Vice President HOWARD NIX
 Second Vice President ROBERT HILDRETH
 Treasurer BOB MEGGS

Recording Secretary GLEN TOLER
 Corresponding Secretary R. V. WILSON
 Chorister BEN BLEDSOE
 Pianist CLIFFORD MOELLER



First row: R. V. Wilson, Jr., Ronnie Gross, Donald R. Moon, Lamar A. Brown, Frank E. Severs, Tom Davis. Second row: Dr. George T. Blackmon, co-sponsor; Dr. Joseph T. McClain, co-sponsor; Royal S. Dodson, Ron Kimbell, George Harris, Bob Meggs, Dwight Clark, Archie Lawrence, Lonney Hulsey. Third row: Walter J. Gilbreath, Joel E. Moody, Lawrence Hammond, Larry Williams, Mel Mintz, J. C. Highfill, Gene Box. Fourth row: Thurman Braughton, Laddie Hixon, Gerald Griffin, Bill Nichols, Bob Pinkerton, Andy Kerr, Charles R. Baskin, David Stevens. Fifth row: Paul G. Stender, J. Paul Lewis, Marvin D. Keenen, Kenneth G. Robertson, Robert Hildreth, Richard Rogers, Leon Lowe, Winifred Traywick, Henry E. Buck.

SECOND SEMESTER OFFICERS

President THEO COOK
 First Vice President ZANE CHESSER
 Second Vice President R. V. WILSON
 Treasurer GERALD PERRY

Recording Secretary PAUL STENDER
 Corresponding Secretary ANDY KERR
 Chorister THURMAN BRAUGHTON
 Pianist CLIFFORD MOELLER

Mission Band



Top row: Gene Blagg, Lonnie Hulsey, Carl Nash, Ken Daugherty, Dewey Barefoot, Richard Rodgers, Lawrence Hammond, Ronald Gross. Third row: Jean Hulsey, Mary Lois Hutto, Beanie Henderson, Winifred Traywick, Bob Peeler, Glendene Dawson, Helen Hart, Veda Brown, George Watanabe. Second row: Nancy Dunham, Lourdes Fernandez, Alice Mehrle, Charlotte O'Kane, Juanita Rosser, Kathy Braughton, Joyce Hopper, Thelma Marlette. First row: Jackie Burton, Peggy Nix, Jean Patton, Ramona Stubblefield, Jean Barefoot, Margaret Gillaspie, Barbara Robertson, Juanita Raley, Annis Fouts, Elsie Shimaura. Not pictured: Tena Nutt, Roy Simpson, Howard Nix, Bob Hildreath, Henry Whitlow, Clitie Smith, Clyde Jackson, John O'Neal, Laddie Hixon, Shirley Hite, Betty Wong, Carol Grant, Darlene Condren, Joe Amis, John Fox, Tom Davis, Donald Moon, Frank Seaver, Glen Toler, Barbara Toler, Janis Bishop, Wynelle Pool, Paul Lewis, David Cunningham, Lois Moeller, Lawrence Wong, Thurman Braughton, Richard Lamborn, Pearl Doi, Tommy Dixon.

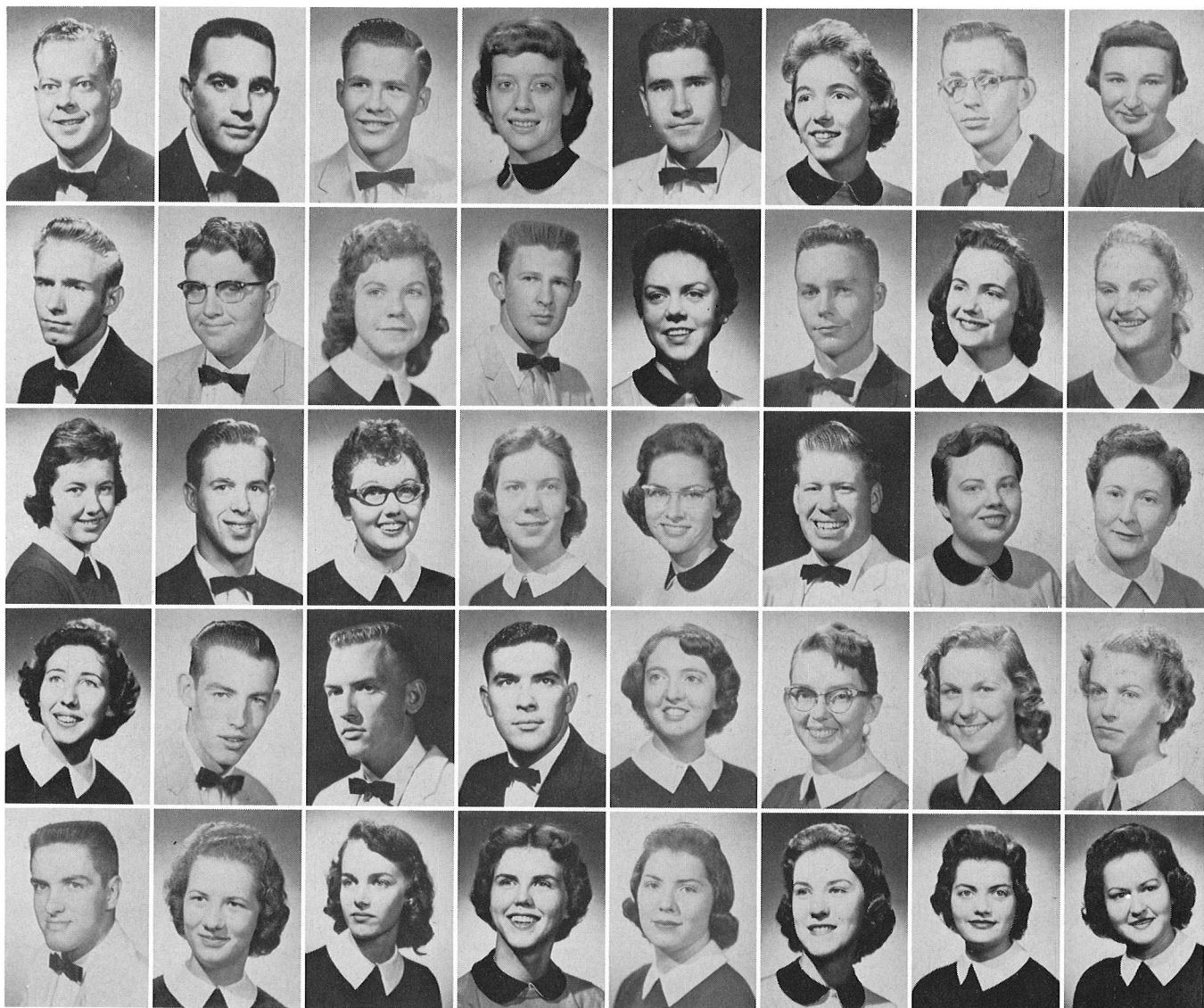
FIRST SEMESTER OFFICERS

President HOWARD NIX
 First Vice President KATHY BRAUGHTON
 Second Vice President JOYCE HOPPER
 Recording Secretary MARY LOIS HUTTO
 Corresponding Secretary ALICE MEHRLE
 Treasurer GEORGE WATANABE
 Program Chairman KEN DAUGHERTY

SECOND SEMESTER OFFICERS

President KEN DAUGHERTY
 First Vice President KATHY BRAUGHTON
 Second Vice President THELMA MARLETTE
 Recording Secretary ANNIS FOUTS
 Corresponding Secretary BETTY WONG
 Treasurer GEORGE WATANABE
 Program Chairman GENE BLAGG

Life Service Band



FIRST SEMESTER OFFICERS—
 President, Thurman Braughton; Vice President, Mary Lois Hutto; Secretary, Nannette Webb; Treasurer, Wilma Long; Chorister, Ben Bledsoe.

Revival Teams: Kathy Braughton, Richard Lamborn. Hospital Visitation: Lawrence Hammond; Colored School: Melba McCullar; Program Chairman: Dee Birdwell; Jail Services: Ron Gross; Street Services: Roger McElroy.



MEMBERS

Jerry Bob Hooten, Jean Hughes, Lonnie Hulsey, Betty Krudwig, Tomazine Long, Wynelle Poole, Ann Vincent, Lois Jean Woodcock, Drolene Plattner, Aloah Henderson, Carole Grant, Gerald Griffin, Jerry Pyle, Joan Pruden, Janice Shepherd, Loratta Pruitt, Darlene Condren, Betty Perry, Laddie Hixon, Bob Peeler, Evelyn Robinson, Ramona Stubblefield, Jean Varner, Gerald Perry, Martha Sue Smart, Gene Blagg, Barbara Shields, Billie Bob Johnson.

SECOND SEMESTER OFFICERS — President, Bob Wright; Vice President, Nannette Webb; Secretary, Joyce Hopper; Treasurer, Mary Lois Hutto; Program Chairman, Ben Bledsoe; Chorister, David Holt; Pianist, Virginia Horton; Publicity, Lawrence Hammond. Hospital Visitation: Thurman Braughton and Kathy Braughton; Colored Mission: Barbara Robertson; Jail Services: Ron Gross and Frank Severs; Revival Teams: Richard Lamborn and Wilma Long.

Y.W.A. Council



Reading from top, left to right: Taylor, Circle Chairman; Blancett, Social Chairman; Johnson, Pianist; Blackmon, President; Reed, Treasurer; Peterson, Community Missions Chairman; Dobson, Circle Chairman; Jones, Mission Study Chairman; Sablan, Vice President; Balcom, Circle Chairman; Pool, Chorister; Nation, Circle Chairman; Smart, Stewardship Chairman; McKnight, Window Chairman; Ward, Circle Chairman; Butler, Circle Chairman; Guthrie, Publicity; Sawyer, Circle Chairman; Vincent, Circle Chairman.
 Not pictured: Wilson, Program Chairman; Smith, Prayer Chairman; Taylor, Secretary; Miss Kathryn Jones, Sponsor.