

**Ouachita Baptist University**  
**Scholarly Commons @ Ouachita**

---

The Ouachita Circle: The Alumni Magazine of  
Ouachita Baptist University

Ouachita Alumni


---

Winter 1999

# The Ouachita Circle Winter 1999

Ouachita Baptist University

Follow this and additional works at: [https://scholarlycommons.obu.edu/alumni\\_mag](https://scholarlycommons.obu.edu/alumni_mag)

 Part of the [Organizational Communication Commons](#), and the [Scholarship of Teaching and Learning Commons](#)

---

## Recommended Citation

Ouachita Baptist University, "The Ouachita Circle Winter 1999" (1999). *The Ouachita Circle: The Alumni Magazine of Ouachita Baptist University*. 55.

[https://scholarlycommons.obu.edu/alumni\\_mag/55](https://scholarlycommons.obu.edu/alumni_mag/55)

This Book is brought to you for free and open access by the Ouachita Alumni at Scholarly Commons @ Ouachita. It has been accepted for inclusion in The Ouachita Circle: The Alumni Magazine of Ouachita Baptist University by an authorized administrator of Scholarly Commons @ Ouachita. For more information, please contact [mortensona@obu.edu](mailto:mortensona@obu.edu).

# The OUACHITA CIRCLE

The Alumni Magazine of Ouachita Baptist University

Arkadelphia, AR Winter, 1999





## A Word from the President ...

Even in this age of electronic mail, facsimile machines, and telephone tag, some folks still prefer to write a letter, address an envelope, affix a stamp, and let the post office take care of the rest. I'll admit that I'm one of those folks.

A father chose the old-fashioned method of communication a few days ago when he wrote to me about his two sons. His comments are typical of those I hear from parents who are pleased with the campus experiences of their sons and daughters:

Through my children, I have seen that Ouachita is much more than a place of higher learning. Beyond all the high academic standards set forth at Ouachita, I have been most impressed by the sound Christian values that are instilled there. I am proud to say that I have been a witness to two young men coming of age in such a family-oriented environment. As a parent, it is nice to know that teaching your kids values does not have to stop when they leave for college.

My prayer for our students--and for their parents--is that Ouachita always will be committed to providing the environment referenced in this kind of letter from a loving father.

As always, please keep Ouachita in your prayers.

*Andy Westmoreland*

PRESIDENT  
Andrew Westmoreland

BOARD OF TRUSTEES  
Clarence Anthony  
Augusta Koen Boatright  
Cotton Cordell  
Stephen Davis  
Bill Elliff  
Jeral Hampton  
Jack Hazlewood  
John L. Heflin, Jr.  
Rex M. Horne  
Johnny Jackson  
Bernice Young Jones  
Larry Kircher  
Wesley Kluck  
Richard Lusby  
John E. Miller  
Don Moore  
Pauline Morrow  
Elizabeth Pruet  
Paul Sanders  
Bryan E. Smith  
John R. Stipe  
William H. "Buddy" Sutton  
Mike Vinson  
Gene Whisenhunt

CHANCELLOR  
Ben M. Elrod

DEVELOPMENT STAFF  
Joe Franz, *Vice President for Development*  
John Cloud, *Associate Vice President for  
Estate and Gift Planning*  
Bryan McKinney, *General Counsel and  
Development Officer*  
Ellis Leagans, *Dir. of Church Campaign*  
Deborah Root, *Dir. of Dev. Publications*

FORMER STUDENTS  
ASSOCIATION ADVISORY BOARD  
Bruce Tippit, *President*  
Junanne Reynolds Brown,  
*1st Vice President*  
Larry Frisby, *2nd Vice President,*  
Wesley Kluck, *Tiger Network Chair*  
*Arkansas Advisors:*  
Olevia Deere Babb, Craig Campbell,  
Suzanne Duke Franklin,  
Larry Root, Lynn Bradley  
*Out-of-State Advisors:*  
Brad Rountree, Polly Nation Tuttle,  
Cindy Ritchie Walker, Bill Vining, Jr.,  
Martin Babb, Sharon Kluck Townsend

*The Ouachita Circle* is a  
publication of Ouachita Baptist  
University, OBU Box 3762,  
Arkadelphia, AR 71998-0001.  
Alumni E-mail: alumni@alpha.obu.edu  
Randy Garner, *Assistant to the President  
for Enrollment Management  
and Director of Alumni Affairs*  
Deborah Root, *Director of  
Development Publications, Editor*  
Jeff Root, *Assistant to the President  
for Public Relations*  
Mac Sisson, *Asst. Dir. of Public Relations*  
Bettie Duke, *Alumni/  
Assistant Director of Tiger Network*  
Printed by Twin City Printing and Litho, Inc.

# The OUACHITA CIRCLE

The Alumni Magazine of Ouachita Baptist University

Arkadelphia, AR Winter, 1999



## •SPECIAL FEATURE•

Presidential Inauguration 2-3  
*A special week of inaugural activities culminated with the investiture of Andrew Westmoreland as the fourteenth president of Ouachita Baptist University on September 10.*

## •AN INSIDE LOOK•

Development News	4
Faculty/Staff News	6
Campus News	10
Alumni News	16
Memorials	17
Class Notes (marriages, births, deaths)	18
The Financial Adviser	A-C

*On the cover: The EEE women's social club swept the Grand Prize Award at the 1998 Tiger Tunes program sponsored by the Ouachita Student Foundation. The winning show was titled "Soldiers in Toyland." Cover photo by Wesley Hitt*

THE  
*Investiture*  
 OF  
*Andrew*  
*Westmoreland*



AS  
 FOURTEENTH  
 PRESIDENT  
 OF  
 OUACHITA  
 BAPTIST  
 UNIVERSITY

A week of singing, preaching and lecturing led to the formal investiture ceremony introducing Dr. Andrew Westmoreland as president of Ouachita.

Westmoreland became president on January 1, 1998 upon Dr. Ben M. Elrod's move to chancellor. The inaugural activities, held September 6-10, allowed the University and its constituencies to focus on the mission of the institution through the merging of Christ-centered worship, academic discussion and celebratory music. Among the activities were: Campus Renewal services led by Steven Arnold, pastor of St. Mark Baptist Church in Little Rock; a lecture by Dr. Mark Noll, the McMannis Professor of Christian Thought and professor of history at Wheaton (Ill.) College; and a concert by Contemporary Christian artists Jaci Velasquez and 4Him.

The investiture ceremony on Thursday morning, September 10, was highlighted by Board Chairman William H. "Buddy" Sutton's investing Westmoreland with the presidency, a

formal charge by Governor Mike Huckabee and Westmoreland's remarks pronouncing a vision for the future of Ouachita.

Westmoreland described his vision for Ouachita as a commitment to four themes: the vast love of Jesus Christ; the liberal arts as a lens to view life; a community marked by love and encouragement to the exclusion of hate; and a service orientation.

Painting a verbal picture of the convergence of faith and learning, Westmoreland said, "In (that) search for excellence, we do not fear the discovery of any truth, because all truth is the perfect creation of Almighty God. When we allow it to do so, the freedom we find in Christ will challenge, inspire, and sustain us in the most fruitful work of the mind."

Turning to Governor Huckabee, Westmoreland declared his readiness to work for the betterment of higher education in Arkansas.

"I support our Governor and our legislature as they work together to



**FIRST FAMILY** • (opposite page) President Andrew Westmoreland is pictured with his wife, Dr. Jeanna Westmoreland, and their eight-year-old daughter, Riley.

**THE INVESTITURE** • (left) President Westmoreland acknowledges the audience after being given the presidential medallion.



**INAUGURAL RECEPTION** • Ouachita's students, faculty, and staff, and special guests attending the investiture service gathered in the center of campus for a reception in honor of President Westmoreland following the investiture ceremony.

fashion a winning and coherent policy for higher education," Westmoreland said.

"Let the public institutions and the independent institutions come together, once and for all, behind a program for the good of all the young people of this state.

"Governor Huckabee, bring us together, and let's make Arkansas known far and wide for the quality, for the access, and for the diversity of its statewide program of higher education. It can be done; the time is right; let's do it now," Westmoreland said.

Addressing in turn several of Ouachita's constituencies, Westmoreland specifically re-assured Arkansas Baptists that the University will remain strong in its Christian groundings.

"We will hold fast to our Baptist moorings, we will cherish our spiritual heritage, and we will embrace our fellow Christians as we spread the message of redemption and hope," Westmoreland said. "And when the history of Ouachita's second century is complete, let it record that our Christian mission only became

more vital as the institution pressed beyond the days of the new millennium."

Westmoreland thanked Ouachita's alumni and friends for their loyalty and support through the years. He also

challenged them to make Ouachita a priority in their planned giving so that the

institution might have increased scholarship opportunities, attract and keep top scholars and teachers, and maintain high standards of quality in every aspect of the University.

"What are these goals worth? We glimpse that worth when we look into the eyes of our children, the eyes of hope and promise," Westmoreland said. "Honestly, can you think of a more important investment than this?"

• by Jeff Root

The entire text of Dr. Westmoreland's speech and other material related to the investiture ceremony are accessible on Ouachita's web site: <http://www.obu.edu>.



**STUDENT SUPPORT** • Tim Caldwell (above left) presents President Westmoreland with a new Bible as a gift from the Christian Ministries Fellowship. Sarah Harmeyer (above right) gives her words of support to the new president during the student-led chapel on Tuesday morning. Students were involved in every aspect of the inaugural activities, voicing their support for Dr. Westmoreland.



# Estate gifts of Selph family provide scholarships

The estate of a Hot Spring County woman has provided Ouachita with more than \$800,000, most of which will be designated for scholarship funds, according to Joe Franz, vice president for development.

Mrs. Wilma Estelle K. Selph of Malvern, a longtime supporter of Ouachita, died May 11, 1998, at the age of 91. In her will, she left the University monies to help further endow the scholarship already established at Ouachita in the name of her late husband, Robert Ira Selph, a 1926 Ouachita graduate, who died in 1960.

**"There is no greater need on our campus than increasing endowed scholarship funds. A gift of this magnitude will make it possible for many deserving students to attend Ouachita."**

**Joe Franz**

"After her husband's death, Mrs. Selph established and faithfully contributed to both the Robert Ira Selph Scholarship Fund and the W. Estelle Selph Scholarship," said Franz. "These two endowed scholarships are awarded annually to students with demonstrated need."

"According to Mrs. Selph's wishes, more than 80 percent of her generous gift will be placed into her husband's scholarship fund. There is no greater need on our campus than increasing endowed scholarship funds. A gift of this magnitude will make it possible for many deserving

students to attend Ouachita. In life and in death, Mrs. Selph's generosity is a testimony to all of us."

Robert Selph was an Exxon Corporation employee who worked in international business areas. While attending Ouachita, he was a member of the Tiger football team and the U.S. Army Reserve Officers' Training Corps. His late brother, Carey Selph, was named to the Arkansas Sports Hall of Fame, played quarterback for the Tigers from 1922-25 and was a professional baseball player in Houston and Syracuse.

# Leadership enlisted for campaign among churches

Ouachita is in the early stages of a *Campaign among the Churches of the Arkansas Baptist State Convention*. Authorized by the ABSC in 1995, this endowment-raising effort focuses on scholarships and the newly created School of Christian Studies. A number of churches have already pledged to the campaign. During the coming year, all churches of the ABSC will have the opportunity to make a commitment. The suggestion is that each church consider a standard of giving equal to ten percent of its current budget, payable over a three-year period or 3-1/3% per year.

The Campaign has a base goal of \$3,000,000 and a challenge goal of \$5,000,000. The funds are earmarked for four specific areas:

· To provide endowed funds for scholarships for students in the School of Christian Studies and for the de-

pendents of Southern Baptist pastors and IMB missionaries.

· To provide endowment funds for the School of Christian Studies.

· To provide endowed faculty positions for the School of Christian Studies.

· To provide funds for the renovation and expansion of Berry Bible Building.

The enlistment of leadership for the Campaign continues. Rex Horne, pastor of Immanuel Church in Little Rock, is serving as the state chair. District chairs currently enlisted are Stephen Davis, Don Nall,

Butch Riddle, Phillip Smith, Mitch Tapson, and Lynn Worthen. District vice-chairs will be secured also. Ellis Leagans is serving as the Campaign Director.

For more information, you may contact the OBU Development office by phone at 870-245-5169, by mail at OBU Box 3754, or by e-mail at <leaganse@alpha.obu.edu>.



**CAMPAIGN GOALS** • The artist's rendering (left) illustrates the proposed renovation and expansion plans for Berry Bible Building. Dr. Scott Duvall (below left), dean of the School of Christian Studies, assist students with their work in the computer lab.

## • ENDOVED SCHOLARSHIPS •

### **The Cora Myrtle Smith, Connetta Elaine Smith Roach and Robert Mitchell Roach Endowed Scholarship Fund**

This scholarship is established by friends and family of Cora Myrtle Smith, Connetta Elaine Smith Roach and Robert Mitchell Roach. Additional gifts may be added to the fund by friends.

Cora Myrtle Smith was a former student at Ouachita who died July 18, 1986, at Fordyce. Her sister, Connetta Elaine Smith Roach ('51) graduated from Ouachita with a degree in education. She lived in Bearden, Arkansas, and was a member of Temple Baptist Church in Fordyce. Mrs. Roach's husband, Rev. Robert Mitchell Roach ('53), was also a graduate in education.

### **The Betty Rasberry McCommas Endowed Scholarship Fund**

This scholarship was established by friends to honor Betty Rasberry McCommas and her 44 years of faithful service to Ouachita. Additional gifts may be added to the fund by friends.

The first scholarship award from the fund will be made in the fall semester following the accumulation of a minimum of \$15,000. Recipients must be majoring in English or majors offered through the division of humanities.

### **The Curtis T. and Loma Hinshaw Endowed Scholarship Fund**

As a surprise Christmas present from her family, Mrs. Hinshaw recently learned the name of the scholarship she helped create, the C.T. Hinshaw Scholarship Fund, has been formally changed. In recognition of, and in appreciation for Mrs. Hinshaw, Ouachita is pleased to formally announce the Curtis T. and Loma Hinshaw Endowed Scholarship Fund. Additional gifts may be added at any time to this fund.

### **The Leo Hodges and Jesse Shelby Endowed Scholarship Fund**

The Leo Hodges and Jesse Shelby Endowed Scholarship Fund has been established by Leo Hodges Shelby of Baton Rouge, Louisiana. To be eligible for an award, a student must be majoring in the field of education, with preference to applicants who are, or plan to be, English majors. The recipient must meet the University's academic and citizenship standards and must maintain at least a "B" average.

### **The McAtee/Agee Endowed Scholarship Fund**

Clyta Agee McAtee of Memphis, Tenn., family and friends have established the McAtee/Agee Scholarship Fund in memory of Rev. Delbert C. McAtee ('43) and Mrs. Clyta Daniel Agee ('13). This fund will provide scholarship assistance to full time students majoring in Christian Studies and meeting academic and good citizenship standards at Ouachita.

Delbert was a pastor for 40 years before serving as Coordinator of BSU on the community college campuses of Arkansas through the Student Department of the Arkansas Baptist State Convention, and as interim pastor of 17 churches after retirement.

Clyta Daniel Agee of Texarkana was the mother of Clyta Agee McAtee and Rev. Bill Agee ('52) of Waco, Tex., and the grandmother of Marilyn McAtee McVeigh ('69) of Germantown, Tenn.

### **The Selma Stephens Phelps Endowed Scholarship Fund**

The Selma Stephens Phelps Endowed Scholarship Fund has been established to assist students who are preparing to enter a Christian service ministry. Applicants from Immanuel Baptist Church, Pine Bluff, will be given preference for the scholarship funds.

Selma Stephens Phelps is a friend of Ouachita and is a member of the Second Century Group.

## **Scholarships and special programs provided through estate giving**

Ouachita recently received two large financial gifts from private sources to aid in student scholarships and various other campus programs.

"These gifts are more than just monetary provisions," said Joe Franz, vice president for development. "They are an investment in the lives of our students."

The George and Fay Young Foundation of Dallas, Texas, gave \$100,000 to the University to establish the George and Fay Young Endowed Scholarship. The scholarship will be awarded beginning the fall of 1999 to students majoring in a business related field. The scholarship committee of the University will determine the recipient of the award.

In 1974, the Youngs provided \$300,000 to establish Ouachita's first endowed chair. Dr. Robert L. Webster, associate professor of accounting, is the current holder of the George Young Chair of Business.

George Young graduated from Ouachita with a bachelor of arts degree in 1924. He and his wife then opened Restland Funeral Home in Dallas. George Young died in May 1994.

The estate of Elma Cobb of Little Rock has provided \$200,000 to establish the Elma Cobb Life Enrichment Fund. The money will be used to bring career missionaries and prominent Christian speakers to Ouachita's campus to talk about spiritual development. Ian Cosh, assistant to the president for community development, and Dr. Scott Duvall, associate professor of religion and dean of the School of Christian Studies, will determine how speakers will be chosen. The first speaker is expected to be scheduled this spring.

The Cobb gift to Ouachita also established the Elma Cobb Chair of Bible. Dr. Bill Cook, professor of religion, has been named as the chair holder.

Cobb graduated from Ouachita in 1930 with a bachelor of arts in religious education degree. She died in September of 1997.





Among huge piles of paperwork and tight time constraints, Dr. Jeanna Westmoreland takes time to share her feelings on her new position, Ouachita's first lady.

Her husband, Dr. Andrew Westmoreland, became president on January 1, 1998.

For her, life is a juggling act. Along with her new responsibilities as wife of the president, she balances a home life, church involvement, civic responsibilities, and a career.

Westmoreland, assistant professor of education and chair of the department of education, says that her life has not changed much since her husband's inauguration. "To be honest, moving to the president's home was probably the biggest deal," she said.

The Westmorelands moved into their former home on Hardin Street in Arkadelphia after they were married. Riley, their eight-year-old daughter, was born while they lived there, and it is the only home their family has ever known. "After living in the same house for 17 years, moving across town was quite traumatic."

Other than the move, Westmoreland says racing with the clock has been somewhat difficult. With three family members all going different ways, coordinating things such as family dinners is almost impossible. "I think to Riley the question is never what are we going to eat. It's where are we going to eat," she laughingly explains.

Discussing the ceremonial roles of first lady, she says she's not really comfortable with always being in the spotlight. She describes herself as a reflective personality type. However, since her father is a Baptist pastor, she is used to being watched and ushered onto stage.

Westmoreland is also afraid people will think she speaks for her husband. "I

In addition to wife, mom, and professional educator, Jeanna Westmoreland takes on the demanding role of

# First Lady

don't want people to judge him based on my words or decisions," she said. "I also don't want to abuse or misuse the respect that people automatically give me because of my title."

Professionally, Westmoreland cuts a wide swath. She is president-elect and state director of the International Future Problem Solving Program, an immediate past-President of Arkansas for Gifted and Talented Education, a member of Beta Sigma Phi women's community social club, and Delta Kappa Gamma teacher's sorority.

Westmoreland is a member of First Baptist Church in Arkadelphia where she serves as older pre-school director. She has participated in numerous committees, including the building committee.

She is quick to add that despite the struggle of her many roles, she may feel overwhelmed but never discouraged. "I hate not to be able to finish things," she said. The support of friends and faculty and staff members are what, she says, help her never give up.

Westmoreland also says there is no way she could do what she does without the support of her family. Her parents always told her there was nothing she could not accomplish. Riley begged her not to quit teaching when Andy accepted the presidential position, and he told her it was important she do what she needed to do for herself.

In her free time, which there is not much of, Westmoreland loves to read. "There are two things I have to do to stay

sane—read 'Newsweek' every week and watch the news every day," she says. She also enjoys playing with Riley and watching the two deer that often come to the edge of their yard on North 26th Street.

Jeanna and Andy met while they were both students at Ouachita. The Wednesday of Andy's inauguration in September of this year was the 20th anniversary of the couple's first date. Jeanna recalled after a few casual meetings on campus, Andy, a senior and president of the Student Senate, called and invited her, a freshman, to a football game. She accepted after explaining that they could eat and go to the game, but she had another date for after the game.

That date, however, was her last with someone other than Andy. They were married after her sophomore year. She finished school while Andy held various administrative positions at OBU.

After graduating with summa cum laude honors from Ouachita in 1981, she taught in the Bismarck School District near Arkadelphia for six years. She then took a supervisory role at Dawson Education Co-Operative with headquarters in Arkadelphia for six years until her current position became available at Ouachita in 1991.

Westmoreland concludes by saying she is pleased with her life, her family, and her job. She has accomplished all her goals and is satisfied. "Well, there is one thing I still want to do," she adds. When she and Andy were dating he gave her a signed contract stating he would take her to see the Egyptian pyramids some time during their life together.

They have yet to go, but she is holding him to the contract.

With the Westmorelands' many responsibilities, it may have to be a retirement vacation.

· by Rachel Deckelman

# Duvall appointed dean of School of Christian Studies

The Ouachita Baptist University Board of Trustees approved a new School of Christian Studies in its October meeting and named Dr. Scott Duvall, associate professor and holder of the J.C. and Mae Fuller Chair of Bible, as the School's first dean.

Dr. Andrew Westmoreland, president of Ouachita, made the announcement. "It's a great day for Ouachita. We are pleased that Dr. Duvall has accepted this important position. The formation of a School of Christian Studies is an indication of the University's ongoing commitment to be a university under the lordship of Jesus Christ," Westmoreland said.

The School of Christian Studies will be comprised of three academic departments: Christian ministries, biblical studies/theology, and philosophy. Dr. Byron Eubanks, assistant professor of philosophy and ethics, will continue to chair the department of philosophy and ethics. The department of Christian ministries will be chaired by Dr. Terry Carter, associate professor of religion, and the department of biblical studies/theology will be chaired by Dr. Danny Hays, associate professor of religion.

"The changes in structure and scope will be positive and will help us to emphasize the things we do well, but we are basically staying the course of the past several years," Duvall said. "We're going to be faithful to what we've been doing here because we think it's been successful, and we will

be true to our Baptist heritage.

"We will do, however, a thorough curriculum overview. We want to do everything we do well, so we'll take a look at every existing course and every possible new course with a goal of excellence in teaching," Duvall said.

Westmoreland and Duvall both expressed appreciation for the leadership of Dr. Bill Steeger, the W.O. Vaught Professor of Bible, who recently resigned to accept a pastorate at Beech St. Baptist Church in Texarkana, Arkansas. Steeger came to Ouachita in 1986 and had served as chair of the division of religion and philosophy since 1989. Steeger, who said he had been considering a move to the pastorate for two years, has shared an office suite with Duvall.

"I have a great appreciation for Bill and for the contribution he made here. He has gathered together a strong faculty and greater numbers of students. It's a strong foundation on which to build," Duvall said.

"I feel a deep sense of God's peace that this is what I'm supposed to do," said Duvall. "I'm extremely grateful to Ouachita and President Westmoreland for the opportunity to serve. I've received a great deal of affirmation from my colleagues since Dr. Westmoreland told the faculty. The endorsement from fellow faculty members means a lot to me. We will work together as faculty, administration and students with the churches of the Arkansas Baptist State Convention."

## Teacher education faculty attends leadership seminar

Six Ouachita faculty attended the Arkansas Leadership Academy for a five day seminar in Northwest Arkansas to learn leadership skills to improve public education.

Attendees were Dr. Jeanna Westmoreland, chair of the OBU department of education; Pam Arrington, associate professor of education; Dr. Charles Chambliss, professor of education; Glenn Good, professor of physics; Dr. Craig Hamilton, associate professor of music; and Dr. Freddie Jolley, associate professor of education.

The seminar was meant to promote

teacher education and working with diverse groups to empower others in the field of teaching. The key promotion at the seminar was to instruct teachers, businesses, and schools to work together.

"We gained insight on the expectations of our students and what we need to do in order to help them to become master teachers," said Jolley.

This year was the first time that Ouachita faculty had been invited to attend the seminar. The annual event had 78 requests to attend, but only 12 teams were chosen to be a part of the workshop.

## —Newsmakers—



**Dr. Scott Duvall**, dean of the School of Christian Studies, recently co-wrote a biblical text for intermediate and advanced Greek students titled "Biblical Greek Exegesis."

Duvall and Dr. George H. Guthrie, chair of the department of Christian studies at Union (TN) University, are the authors of the book which Duvall said stresses "real life" application in "bridging the gap between understanding the categories of Greek grammar and the demand to communicate the meaning and significance of the New Testament message to the world's population in the 21st century."

The book is published by Zondervan Publishing House.



Ellis

Faculty members **Dr. Selwyn Ellis**, assistant professor of business administration, and **Dr. Robert Webster**, associate professor of accounting and holder of the George Young Chair of Business, have been accepted for national publication for an article that they co-authored.



Webster

The article is titled "Innovativeness of Information Systems

Managers Toward Telecommuting: A Structural Education Model." It will be featured in an upcoming issue of "The Journal of Computer Information Systems" which is the official journal of the International Association for Computer Information Systems.



**Dr. Raouf Halaby**, chair of the department of visual arts, has been appointed to the Arkansas Humanities Council by Arkansas Governor Mike

Huckabee. Halaby will serve on the Council until December 31, 2000.

Halaby is a noted state, regional, and national lecturer and author on Arab-American issues.

## —Newsmakers—



**Dr. Caroline Henderson**, associate professor of music, presented a paper titled "An Integrated Method of Assessing the College Music Student" at the annual meeting of the College Music Society held recently in San Juan, Puerto Rico.

Henderson has performed extensively throughout the United States and in Europe including world premiere performances at the 11th World Saxophone Congress held in Spain and the 1998, 1996, and 1994 North American Saxophone Alliance National Conferences.

Henderson is a Yamaha Performing Artist.



**Dr. Scott Holsclaw**, associate professor of theatre arts and chair of the department of theatre arts, was named State of Arkansas Chair for the Kennedy Center/

American College Theatre Festival. Holsclaw will serve the arts community in the capacity until the year 2000.

Holsclaw has served with the Festival for two years as vice chair for region six that encompasses colleges and universities in Oklahoma, Louisiana, Arkansas, Texas, and New Mexico. Holsclaw will travel to the region six schools and judge more than 40 drama competitions.



**Dr. Freddie Jolley**, associate professor of education, recently attended a national conference on being effective teachers titled "What Do the Best

Teachers Do" held at Northwestern University in Evanston, Ill.

There were several speakers who addressed topics such as "Research on Learning," "Creating Natural Learning Environments," and "Crafting Assignments and Expecting More." Jolley was the only attendee from Arkansas and plans to use her experience to better her students' perspectives about teaching.

# Six educators join faculty

Six new full-time faculty members were approved for the 1998-99 academic year by the Board of Trustees.

They are Dr. David S. Brooks, assistant professor of biology; Dr. Jay R. Curlin, assistant professor of English; Dr. Caroline Henderson, associate professor of music; Dr. Martin D. Perry, Jr., assistant professor of chemistry; Dr. Glenna Sumner, assistant professor of economics; and Dr. James G. Taylor, assistant professor of biology.

Brooks received a bachelor of science degree in biology from East Texas Baptist University in 1983; and master of science in plant pathology and microbiology and doctor of philosophy in zoology degrees, both from Texas A&M University in 1989 and 1994, respectively.

He has served previously as assistant professor of biology at LeTourneau (TX) University since 1994.

Curlin received a bachelor of arts degree in English from Ouachita in 1983. Subsequent degrees include a master of arts in English from the University of Arkansas-Fayetteville in 1985, and a doctor of philosophy in English from the University of Michigan in 1993.

He served previously as assistant professor of English at Southwest (MO) Baptist University (1997-98) and the University of Central Arkansas (1991-97).

Henderson received a bachelor of music education degree from the University of Central Arkansas in 1989; a master of music in woodwinds performance and a doctor of musical arts diplo-

mas in saxophone performance with a minor in music education, from the University of Georgia, granted in 1990 and 1994, respectively.

She previously served as assistant professor of music at Eastern New Mexico University (1993-98).

Perry received a bachelor of science in chemistry degree from Arkansas Tech University in 1990 and a doctor of philosophy diploma in physical chemistry from Oklahoma State University in 1994.

He previously served as assistant professor of chemistry at ATU (1996-98) and at Ouachita in the spring of 1996.

Sumner received a bachelor of science in business administration degree in finance from Southeast Missouri State University in 1984; a master of business administration diploma from Southern Illinois University in 1987; and a doctor of philosophy degree in economics from the University of Oklahoma in 1993.

She has served previously as assistant professor of economics at Missouri Baptist College (1995-98) and at Birmingham-Southern College (1993-95).

Taylor received a bachelor of science degree in forestry from Louisiana Tech University in 1978; a master of science in biology degree from the University of Central Arkansas in 1989; and a doctor of philosophy degree in biological sciences from Texas Tech University in 1993.

He has served previously as lecturer in biological sciences at Texas Tech (1995-98).

## Faculty appointed to new positions

Eight faculty members have been appointed to new positions. The changes are as follows:

· Dr. J. Scott Duvall, associate professor of religion, has been appointed as the holder of the J. C. and Mae Fuller Chair of Bible;

· Dr. John Howard Wink, professor of English, has been appointed as the holder of the Betty Burton Peck Chair of English;

· Dr. Charles W. Wright, dean of the Bernice Young Jones School of Fine Arts and professor of music, has been appointed as the holder of the Lena Trimble Shepperson Chair of Music;

· Dr. Doug Sonheim, associate professor of English, has been named the acting chair of the department of English;

· Dr. Jeanna Westmoreland, assistant professor of education, is the new chair of the department of education; and

· Dr. George Keck, the Addie Mae Maddox Professor of Music, is the new chair of the department of applied music in the division of music.

· Dr. Bill Cook, professor of religion, has been named the Elma Cobb Chair of Bible.

· Dr. Raouf Halaby, professor of English and art, has been named the chair of the department of visual arts.

# Trustees approve faculty promotions

Nine faculty members were promoted to higher academic rank by recent action of the Ouachita Board of Trustees.

The promotions to the rank of full Professor include Dr. Randall Wight in psychology and Dr. Doug Reed in political science.

Promotions to the academic rank of Associate Professor include Dr. Trey Berry in history and Dr. Doug Sonheim in English.

Advancements to the rank of Assistant Professor were granted to: Nona Anderson in Spanish; Jeanie Curry in accounting; Kim Patterson in library science; Wendy Richter in library science and Jan Weatherford in library science.

# University appoints new staff

Thirty-seven new staff members have been employed by Ouachita Baptist University since September 1997.

Their names and services include the following: Sharis Armstrong (financial aid officer); Cathy Baker (financial aid); Jerry Boyett (maintenance); Kathleen Cates (custodial); Jeremy Collie (maintenance); Lois Evans (dean of students secretary); Dana Godwin (custodial); and Melanie Hayes (Foster Grandparents).

More new staff members include: Jill Houlihan (arts and sciences secretary); Ann Hughes (development); Kevin Inman (director of campus ministries); Michael Johnson (assistant football coach); Linda Jones (custodial); Challene Kee (head resident); Meredith Kelley (admissions counselor); and Tim Lamb (maintenance).

Additional new staff members are listed as follows: Ellis Leagans (development officer); Drew Mills (maintenance); Vickie Norton (custodial); Kim Pessel (admissions counselor); Brett Powell (director of financial services); Marla Rigsby (computer services); LaDonna Ritter (school of business secretary); Ricky Robbins (maintenance); and Becky Sergeant (computer services).

Other new staff are: Joy Shupe (Title III secretary); Sheila Smith (administrative services secretary); Cecil Stephens (maintenance); Dana Stone (GNED secretary); Bill Sutton (head resident); Rob Taylor (head resident); Eric Torrence (minority services); Richard Vernor (maintenance); Tanya Walker (Evans Student Center); and Ona Faye Wishum (library technical services).



**Noises Off** • The Department of Theatre Arts of the Bernice Young Jones School of Fine Arts presented the British farce, "Noises Off," in October. The play was directed by Dr. Scott Holsclaw, associate professor of theatre arts.

# —Newsmakers—



**Dr. Isaac Mwase**, assistant professor of religion and philosophy, presented a paper at the biennial meeting of the Baptist Association of Philosophy Teachers,

held September 25-27 at the New Orleans Baptist Theological Seminary.

The paper was titled "Teaching Bioethics Using Doctor's Dilemmas." The content of the paper dealt with the far reaching effects of scientific advances on religion.



**Dr. Jon Secret**, associate professor of music, was recently appointed as Arkansas State Governor of the National Association of Teachers of Singing

(NATS) by Nita Herrick, regional governor for the southern region of NATS. Secret will serve as a board member for the southern region which includes the states of Arkansas, Louisiana and Mississippi.



As part of a semester-long sabbatical leave of absence, **Dr. Bill Viser**, associate professor of religion, will lead conferences for the International Mission

Board of the Southern Baptist Convention in western Africa, southeast Asia, western Europe and South America during the spring of 1999. The conferences will deal with stress and conflict management.

Viser has also been elected to the Board of Directors of Courage House of Arkadelphia and will become president of the organization this month.



**Dr. Johnny Wink**, professor of English, presented a paper at an academic symposium titled "The Christ-Haunted South: A Conference on Southern Religion, Social

Practice, and Literary Art" held at Baylor University in Waco, Tex. on October 22-24.

Wink's paper was titled "The Miscegenated Voice: Point of View in Jack Butler's 'Jujitsu For Christ.'"



Ouachita Baptist University

# Common BOND

Homecoming 1998



The Ouachita family gathered October 17 for Homecoming activities. Named to the Homecoming court (*top photo*) were: Leah Creed, second runner-up; Jana Keasler, first runner-up; T. K. Zellers, homecoming queen; Terry Williams, third runner-up; and Dee Dee Reading, fourth runner-up. The 20th annual Tiger Tunes competition was won by the EEE women's social club. The Kappa Chi men's social club won second place, followed by BSU (*left photo*) in third place and Tri Chi women's social club (*bottom left photo*) in fourth place. Alumni gathered for special class or organization reunions (*bottom center photo*) on Friday evening and Saturday. The Tigers hosted Northeastern State (OK) University (*bottom right photo*) in a Lone Star Conference game. The Redmen won the contest 20-14.



# University receives honors from national publications

## U.S. News & World Report

Ouachita has been named one of the top ten regional liberal arts colleges and universities in the south according to U.S. News and World Report's 12th annual college rankings.

"America's Best Colleges," the college rankings guidebook published by U.S. News, listed Ouachita as number nine in academics among the 130 regional liberal arts schools in the south. The mark was up from number 13 last year.

"We're pleased to be included on this list," said Dr. Andrew Westmoreland, president of Ouachita. "Anytime a publication does a list like this, it's valuable. Ouachita continues to make significant progress, and it's pleasing to see outside groups recognizing that."

"America's Best Colleges"

## "Ouachita" show receives Covenant Award from Broadcast Communications Group

"Ouachita," a regionally distributed 30-minute magazine-style cable television program that highlights campus programs, groups and personalities at Ouachita, has won a national award in religious television broadcasting. The program was awarded a 1998 Covenant Award for being the best in program series in the local church programming division. The competition was sponsored by the Broadcast Communications Group of the North American Mission Board of the Southern Baptist Convention.

The Covenant Awards are given annually to media

outlets in honoring significant contributions to faith and family values in the media.

## America's Best Christian Colleges

is the best seller among college rankings guidebooks in the country, providing facts and figures on more than 1,400 schools nationwide.

Ouachita was recently named in "America's Best Christian Colleges: 1999," a publication that includes 87 colleges from 31 states. It is the second time in as many years that the university has been so honored.

Institutions recognized have the highest academic standards among both denominational and inter-denominational colleges and universities.

"These Christian schools were not judged against other Christian colleges and universities, but against all institutions of higher education," said John Culler, publisher of the book. "The ones chosen for

inclusion in our book do an outstanding job in educating their students." Selection is based in part upon the high school grade point average and SAT/ACT score of the entering freshman class.

## America's 100 Best College Buys

Ouachita was also listed as one of "America's 100 Best College Buys" by John Culler & Sons. Ouachita was chosen because the institution's costs are under the national average, but academics are above the national average.

"These colleges and universities making the list are all 'value-added' schools, where a top-notch education is available for a reasonable cost," according to Culler.

Culler said the colleges and universities selected for the honor have managed to keep costs down and at the same time keep outstanding academics.

mass communications, is the executive producer.

Root and a student in the department of mass communications are the co-hosts of each month's show. Other students in the telecommunication section of the department work with Ozmun on the technical requirements of the show.

The "Ouachita" show is not new to awards. In 1994, the program was nominated for recognition in the best program series in ACTS cable competition and was heralded in another instance for an award from the Baptist Public Relations Association.

## Campus BRIEFS

◆ Ouachita hosted its annual Fall Pastors' Conference on October 1-2 with three members of its division of religion and philosophy serving as teachers.

Southern Baptist Convention church leaders from across the state and region gathered at Ouachita during this period to study the Bible book of Joshua, the 1999 Winter Bible study book of the denomination.

Leading in the study were Dr. William Steeger, the W.O. Vaught Professor of Bible and chair of the division of religion and philosophy; Dr. Danny Hays, associate professor of religion; and Dr. Dennis Tucker, director of external programs and assistant professor of religion.

The conference was sponsored by the Center for Christian Ministries.

◆ A record 73 Arkadelphia and Caddo Valley area merchants and organizations and churches took part in the fifth annual Spotlight on Arkadelphia program.

Dr. Jeff Root, assistant to the president for public relations and assistant professor of communications, served as coordinator of the event, which was designed primarily to acquaint new and returning students, along with faculty and staff at Ouachita with the programs, goods and services of the participants.

During the Spotlight on Arkadelphia time, the school provides, free of charge, tables, chairs and electricity for the participants. The relaxed nature of the program allows students, faculty and staff to go from table to table and become acquainted with area enterprises.

# Chicken & Fries & Exercise

Ouachita students, faculty and staff now have a new menu option with the opening of the Chick-fil-A restaurant in Evans Student Center. A ribbon-cutting ceremony was held to officially open the new location on October 29.

"Bringing Chick-fil-A to the university is a natural step toward expanding our business into new areas. Marriott's reputation for excellence in the food service industry allows Chick-fil-A to maintain its standards for providing high-quality service and food," said Chick-fil-A Operator Consultant Alan Kizer.

"We take pride in being able to offer our customers the high-caliber products Chick-fil-A provides and we know its menu will enhance the food choices currently available," said Marriott Food Service Director Walt Kehoe.

Another exciting aspect of this new partnership is the close fit between the mission and values of the Chick-fil-A Corporation and Ouachita's commitment to Christian excellence.

"Chick-fil-A's founder, Truett Cathy, is a Southern Baptist who has built his multi-million dollar franchise on a core of Christian principles. It's a great match for Ouachita," said Richard Stipe, vice president for administrative services.

The addition of Chick-fil-A was just one of the renovations completed this fall for Evans Student Center. Other areas of renovation included:

- Additional seating area across from Chick-fil-A and the Tiger Grill in the area formerly known as the formal lounge, or "fishbowl."

Tables and booths provide space for eating, studying, or just visiting, and a small stage provides for entertainment during coffee shops and other small gatherings.

- The formal lounge was moved down the hallway from Student Services. The room formerly occupied by the department of family and consumer sciences was renovated with new furnishings. When not reserved for receptions, the room is open to students.

- The area formerly occupied by the student activities office has been renovated as the Ouachita Wellness Center. Exercise and weight equipment provide an easy-access area for students, faculty, and staff to work out.

- The renovation also included new outdoor furniture for the ESC Overlook, as well as new pool tables and ping pong tables in the recreation area.

- The student activities offices were relocated adjacent to student services in an area formerly used as conference space.

Funding for this project was made possible primarily in the form of a grant from the Pepsi Cola Company through its local distributor, Delta Beverage Group of Hot Springs.

"This project was not originally planned or budgeted for this semester, but the Pepsi grant provided a perfect opportunity to make progress toward our goal of enhancing campus services to students," said Stipe. "Most of the renovation work was done by our own physical plant and I am extremely pleased with the quality of their accomplishment."



**RIBBON CUTTING** • (above) Alan Kizer, Chick-fil-A operator consultant, Dr. Bill Downs, president of the Arkadelphia Chamber of Commerce, and Walt Kehoe, Marriott Food Service Director, assist with the ribbon cutting of the new Chick-fil-A.

**EXERCISE** • (left) Students can now work out in the Ouachita Wellness Center in Evans Student Center.



## Ouachita hosts ABSC 150th anniversary

The 150th Arkansas Baptist State Convention gathered at the Ouachita campus on November 3-4 for its annual meeting.

The theme "Touch the Community" was the focus of this year's meeting. Convention events included the 150th anniversary celebration drama (*top photo*), "Reflecting, Rejoicing, Renewing," which included the Ouachita Drama Team and the University Choir; the Ouachita report given by President Andrew Westmoreland (*left*); and a special recognition of service as president and chancellor of Ouachita to Dr. Ben Elrod, and his wife, Betty Lou, by ABSC Executive Director Dr. Emil Turner (*far left*).

Elected to a second term as president of the Arkansas Baptist State Convention was Greg Kirksey ('77). Also elected officers were Bill Bowen ('70), first vice president; and Tim Reddin, second vice president.



### TIGER SERVE DAY

## Ouachita family joins community in clean-up effort

Two hundred forty-eight Ouachita students, faculty and staff members volunteered to help with the Ben M. Elrod Center for Family and Community's Tiger Serve Day in conjunction with an Arkadelphia city-wide clean-up effort on September 26.

Tiger Serve Days are scheduled throughout the academic year and are designed to be opportunities for OBU students to join with the faculty and staff in helping perform community service projects for the Arkadelphia community.

The recent Tiger Serve Day was unique because the Arkadelphia Chamber of Commerce, the city of Arkadelphia, and the Center joined efforts to accomplish needed work around the area.

Thirty-seven teams of Ouachitians put in more than 700 hours of labor doing everything from helping elderly people clean their homes,



raising money for the Humane Society through a car wash, hauling trash to landfills, resealing the surface of a skateboard park, weeding gardens at Perritt Primary School, or picking up trash on Arkadelphia's streets.

Twelve city employees sacrificed their day off and participated in the clean-ups as well. They hauled off over

eight tons of trash, debris, and limbs. Four lots were bush-hogged by the Arkadelphia Street Department.

"It's exciting to see so many people serving their community and to know that individuals do make big differences," said Abby Hughes, director of research for the city.

Blain Smith, executive director for the Arkadelphia Chamber of Commerce, said, "It was also great to see college students, city employees, and community volunteers all work together for the betterment of the city."



# Campus BRIEFS

◆ The premier jazz ensemble of the United States Air Force, the Airmen of Note, presented a big band jazz concert on November 5 at Ouachita.

The program was co-sponsored by the Daily Siftings Herald newspaper in Arkadelphia and the Division of Music of the Bernice Young Jones School of Fine Arts at OBU.

The Airmen of Note musical organization was created in Washington, D.C. to carry on the tradition of Glenn Miller's Army Air Corps dance band. The Note adopted a more contemporary style under the direction of the legendary Sammy Nestico in the mid-50's.

◆ Ryan Hankins of Crossett, a December graduate in English and biblical studies, received a \$23,000 Rotary Ambassador Scholarship to study at Oxford University. During his study next year, he will explore historic Celtic practices in 20th century American religion.

◆ The Ben M. Elrod Center for Family and Community sponsored a community relations project called "Holiday Wishes" to benefit under privileged children in the Arkadelphia community during the Christmas holiday season.

The project sought assistance from Ouachita clubs, classes organizations, and individuals to fill out requests for low income families that needed assistance in making their child's Christmas a special one.

The "Holiday Wishes" program worked with the Center and Ouachita's public relations office. It began as the idea of mass communications majors Jill Presley of Batesville and Melissa Ross of Malvern.

## THE DANIEL R. GRANT INTERNATIONAL STUDIES PROGRAM

# University signs agreements with institutions in Mexico, Hong Kong

Ouachita, through its Daniel R. Grant International Studies Program, recently reached an agreement with Instituto Allende in San Miguel de Allende, Mexico, and with Hong Kong Baptist University in Hong Kong, China, for student exchange programs that began this fall.

The Mexican university was founded in 1941 as a center for the study of the Spanish language and studio arts. It has since become one of the premier study enclaves in Latin America for American students.

The city was an important site in the Mexican independence movement in the 1800's and currently serves as a center for the arts.

Students traveling to San Miguel de Allende may choose from a variety of courses of study, including archaeology,

Spanish, art, and art history. The university provides host homes to house the students while on campus.

The Hong Kong Baptist University study program was created so business majors or minors could study in one of Asia's top universities, as well as experience the excitement of Hong Kong's bustling business climate.

The university was established with the mission of providing quality higher education in a Christian environment. It is a liberal arts institution with a variety of majors and degrees and an especially strong Wing Lung Bank International Institute for Business Development.

While in Hong Kong, students room with a Chinese student in an international residence hall on campus.

Currently, 23 Ouachita

students are studying abroad through exchange programs this semester in Austria, England, Japan, China, Morocco, Mexico, and Hong Kong.

"Ouachita firmly believes that exposure to such international programs aids in the development of the whole person and the institution in general," said Dr. Trey Berry, director of the Daniel R. Grant International Studies Program and associate professor of history at Ouachita.

Berry said OBU students and faculty initially benefit from the good things coming from the international studies program. "But, the benefits in the long run will be a bridge of international understanding created between peoples from all nations—a bridge that will make a better world for all mankind," he said.

by Rachel Deckelman

# Regional Studies Center receives grant

The Pete Parks Center for Regional Studies at Ouachita recently received a grant from the Arkansas Game and Fish Commission to do a historical study in the Rick Evans/Grandview Prairie Conservation Education Center and Wildlife Management Area in Hempstead County.

"We received a grant from Game and Fish so that we could survey a 5,000 acre former plantation in south Arkansas," said Dr. Trey Berry, associate professor of history.

"The land is a unique piece of property that contains fossils, native American mounds, and unique plant life," he said. "It is one of the few places on the earth that is called a black land prairie."

The grant, Berry said, will allow Ouachita students and faculty a non-conventional on-site study approach to the property, which is located 50 miles south of Arkadelphia near Columbus in Hempstead County in southwest Arkansas.

Work on the site has already begun. "This past summer nine Ouachita students began working on the project in helping with surface surveying. We plan to go back in January and take more students," Berry said.

"Game and Fish wants us to tell the history of the site, so that it can be made into an interpretive park for the state. They purchased the land as a wildlife management and eco-

logical site," Berry added.

The Parks Center will submit its findings of the land to the Game and Fish Commission in May of 1999.

Three other professors are working with Berry on the project. They include: Lavell Cole, professor of history; Dr. Ray Granade, professor of history and director of library services; and Dr. Tom Greer, the Clarence and Bennie Sue Anthony Professor of Bible and Humanities.

The primary focus of the Center is to identify, collect, preserve, and disseminate information on the culture of south Arkansas, north Louisiana, and east Texas.

Alie Hill

# Sports Wrap-Up

## Football

The 3-7 final record of the 1998 Tiger football team does not tell the whole story of the season. With perhaps the most talented team in Coach Jimmy "Red" Parker's three years, expectations were high for the team's second year in the Lone Star Conference.

That success depended on the variables falling in favor of the Tigers. One big variable that didn't fall the Tigers' way was injuries. At one time in the season, five of the top six offensive linemen were out with injuries and the first three quarterbacks were injured as well, leaving a wide receiver to start the homecoming game at quarterback.

The hard-working team began the season with a 24-3 loss to Henderson State and got their first win over Midwestern State 24-20 in Wichita Falls.

All wasn't gloomy though for the Tigers, with freshman quarterback Brandon Johnson of Waco, Tex., setting a school record for passing yards in a game with 351 yards in a 34-17 victory over Southwestern Oklahoma State. The Tigers earned their third conference win over East Central (Okla.) University 20-14 on the last home game for the seniors at A.U. Williams Field.

Tigers earning post-season honors were senior wide receiver Damien Harris of Arkadelphia who was named first-team All Conference, along with senior free safety Ben Wright of Hawthorne, Fla., and junior punter Jeff Works of Longview, Texas.

Rico McClarity, a junior running back from Radcliffe, Ky., was named Second-team All Conference, along with senior defensive lineman Scott Witherspoon of Mt. Pleasant, Texas, and senior linebacker Jimmy Stewart of Highland, Calif.

Those Tigers named Honorable Mention All conference included sophomore wide receiver Rickey Rogers of Lake, Miss.; senior center David Bird of Ft. Lauderdale, Fla.; senior defensive lineman Eric LaGraffe of Placentia, Calif.; and senior cornerback Kenny Calvin of Bakersfield, Calif.

Two athletes were named to the 1998 Football Academic All-Conference North Division Team. They were Scott Witherspoon and Caleb Rawls. Witherspoon is a physics major with a perfect 4.0 grade point average. Rawls, a pre-law major, has a 3.8 grade point average. •by Chris Babb

## Cross Country

The Tiger and Lady Tiger cross country teams continued their rapid improvement under the leadership of coaches Grant Pate and Joveta Arnold.

The Tigers, coached by Pate, placed ninth in the Lone Star Conference meet on October 24 on the campus of Texas A&M-Kingsville. Ouachita had two victories for the season at the Lyon College Invitational in Batesville and the Hendrix College Invitational in Conway. This was the fourth consecutive year that the Tigers have won the Lyon College meet.

Sophomore Darren Hull from Laurel, Mont., was once again the team leader as he paced the Tigers all season. A surprise to the team was the emergence of freshman Adam Norwood from Port Orchard, Wash. (South Kitsap), who fared well right behind Hull all year.

The Lady Tigers, coached by Arnold, continued to improve throughout the year. Ouachita's women were one place shy of the top 10 at the Lone Star Conference meet in finishing 11th.

Sophomore Anna Stuckey from Van Buren and junior Betsy Henry from Ennis, Texas, were the leaders for the team.

•by Brent Gambill

## Volleyball

The Lady Tiger volleyball team began the year with new leadership and the squad grew with the coach through the season and built a good foundation for the future of the volleyball program.

The Lady Tigers (8-26, 2-10) began the year with a fresh start in the person of new coach Bill Sutton. Ouachita ended the year in a three-way tie for fifth in the Lone Star Conference North Division.

Junior middle blocker Christa Black from Lamesa, Texas (Abilene Cooper), led the Tigers all year, even while battling injuries that caused her to miss three matches. Black was named to the Lone Star Conference Honorable Mention All-Conference team.

Statistically, Black led the team in kills with 216 in 102 games for an average of 2.12 per game and hitting percentage with only 79 errors on 565 total attacks for a percentage of .242.

Another team leader was sophomore outside hitter Susi Kurth from Freital, Germany (Landmark Christian), who was eighth in the Lone Star Conference in serve aces with 45 in 118 games for an average of .38 per game.

•by Brent Gambill

## Intramurals

Ouachita's Baptist Student Union Powerhouse flag football team traveled to Conway with one goal in mind: a state championship.

Mission accomplished.

Powerhouse was one of 12 teams to participate in the Arkansas Flag Football Championships, which were held at the University of Central Arkansas and Hendrix College.

The 12 teams represented seven schools: Ouachita, UCA, Hendrix, John Brown University, Arkansas Tech University, Arkansas State University, and University of Arkansas-Little Rock.

The BSU squad only lost one game en route to the title. From there, Powerhouse mercy-ruled every other team it played, winning the championship. The mercy rule is

### TEAM LEADER •

Middle blocker Christa Black (right) yells in support of her teammate.



evoked when a team is leading by 17 points or more with two minutes remaining.

Courtesy of their state championship, Powerhouse earned a berth in the national tournament held during the Christmas break in New Orleans, La.

•by Patrick Netherton



**Bruce  
Tippit**

President  
Former Students  
Association

This recent baseball season was energized with Mark McGwire's race with Sammy Sosa to hit the most home runs in a single season. As we all know, Mark McGwire achieved the record with an unbelievable 70 home runs. While all of the balls McGwire hit out of the park were valuable to collectors, the one that broke Roger Maris' record of 62 was particularly valuable.

I read recently that a man found in the attic of a relative the first baseball that Babe Ruth hit out of Yankee Stadium. It was signed by Ruth but otherwise it was just a round ball of yarn with a cork center covered with horsehide and stitched with cord. It was common but what made it uncommon was what was accomplished when it was touched by greatness.

Ouachita is as the theme says "A common bond in an uncommon place." It is filled with common people with common problems, challenges and dreams. What makes those people and this place uncommon is the greatness of its purpose that touches those common lives. Touching and transforming people with the truth of Christ in the context of an ever-challenging culture is the purpose of Ouachita Baptist University.

As president of the Former Students Association, I encourage all of us to support this uncommon place not with common interest but with an uncommon involvement. We are those who have been touched by the greatness of this place called Ouachita. May we do all we can to make certain this greatness endures!

## • FSA Advisory Board •

The Former Students Association Advisory Board met in September of '98 and formed four committees to review the activities of YOUR Alumni Office. The committees are:

*Nominating Committee*  
Cindy Ritchie Walker, Chair  
Brad Rountree  
Craig Campbell  
Junanne Reynolds Brown

*Distinguished Alumnus*  
Polly Nation Tuttle, Chair  
Olevia Deere Babb  
Lynn Bradley  
Bruce Tippit

*Constitution and By-Laws Review*  
Larry Root, Chair  
Sharon Kluck Townsend  
Larry Frisby

*Homecoming*  
Martin Babb, Chair  
Suzanne Duke Franklin  
Wesley Kluck  
Bill Vining, Jr.

Each of these are working committees and will report during the spring meeting of the FSA Board in March.

## • Gold Tiger Luncheon •

The official induction of Ouachita's  
**Class of 1949**

into the Gold Tiger Club  
for having graduated 50 years ago!

April 16, 1999 · 12 noon

Evans Student Center Banquet Room  
Ouachita Baptist University

Details will be mailed!

## • Alumni Web Page •

Please visit the Alumni Web Site  
at [www.obu.edu](http://www.obu.edu).

Then click on Alumni.

Complete the ALUMNI SURVEY to give updates.  
This is a great way to send us class notes information  
for the Ouachita Circle.

Also, you may give us your e-mail address.

## • Important Upcoming Events •

February 15-19  
March 5  
March 5-6  
March 22-26  
April 15-18  
April 16  
May 15

Christian Focus Week  
Senior Dinner  
FSA Advisory Board  
Spring Break  
"My Fair Lady"  
Gold Tiger Luncheon  
Commencement

# Memorial Contributions

July 16 - November 30, 1998

Frank Achenbach  
By: Mr. Nelson B. Eubank

Billie English Adams  
By: Mr. Grover Adams  
Dr. and Mrs. Raymond  
Peoples

Andy Allison  
*Son of Charolette Allison*  
By: Mr. and Mrs. Bobby G. Jones

Edith Ashcraft  
By: Mr. Nelson B. Eubank

Jimmie D. Brock Baylor  
By: Mr. and Mrs. Raymond  
Richards

Alice M. Bell  
By: Mr. John Elrod

James Byrne  
By: Dr. and Mrs. Raymond  
Peoples

Madeline Carson  
By: Ms. Zena P. Hunter

Sarah Cloud  
*Sister of John D. Cloud*  
By: Mr. and Mrs. John D. Cloud  
Dr. and Mrs. Raouf J. Halaby  
Dr. and Mrs. Raymond  
Peoples

Melvin Coffelt  
*Father of Nancy Turner Hardman*  
By: Drs. Jeff and Deborah Root  
Mr. and Mrs. Mac B. Sisson  
Mr. and Mrs. Otis H. Turner

Rex Y. Cooper  
By: Mr. J. Mark White

Mary Alice Crawford  
By: Mr. and Mrs. John D. Cloud

Nolan "Brownie" W. Crawford  
By: Mrs. Louise S. Baber  
Mr. and Mrs. Frank M.  
Berginski  
Miss M. Catherine Condray  
Ms. Juanita Crawford  
Mr. and Mrs. Roy P.  
Crawford  
Mr. and Mrs. Joseph A. Franz  
Mrs. Marguerite Goodloe  
Drs. William and Margaret  
Hein  
Mr. and Mrs. James C.  
Hobgood  
Mrs. Virginia Crawford  
Horejsi  
Mrs. Joy C. Jackson  
LTC and Mrs. Crawford T.  
Marbury  
Dr. Clark W. McCarty  
Mrs. Mozelle McSwain  
Miss Virginia Queen

Taylor, Rodgers, Turner &  
Malone, LTD

Thelma Crawford  
By: Mr. Nolan W. Crawford

Alton R. Crawley  
*Former Computer Science Faculty*  
By: Miss Dayna J. Crawley  
Mr. Donald Crawley  
Mrs. Joanne Crawley

Margaret Jacks Deese  
By: Rev. Wilson Deese  
Mr. and Mrs. Ed Flaig  
Mr. and Mrs. Louis Moore  
Jacks, Sr.

Ernie Freeman  
By: Mr. and Mrs. Wade Allison

Mr. and Mrs. William B. Fulcher  
By: Mr. and Mrs. George W.  
DeLaughter

Norman and Ida Fulleylove  
By: Mrs. Byrla Jean

Bradley James Gilbert  
By: LTC and Mrs. James H.  
Gilbert

Ed C. and Mary H. Gilbert  
By: LTC and Mrs. James H.  
Gilbert

Alla B. Earle Gladden  
By: Dr. and Mrs. Raymond  
Peoples

J. Richard Grant  
By: Mrs. J. Richard Grant

Emma Gray  
*Former Maintenance Staff*  
By: Mr. and Mrs. Wade Allison  
Dr. and Mrs. Paul Root  
Mr. and Mrs. Mac B. Sisson

Willie Gray  
By: Mr. and Mrs. Wade Allison

Hiram C. Hall  
By: Mrs. Mildred L. Gosnell

Thomas E. Halsell  
By: Mrs. Mary E. Halsell

Edward P. Hammons  
By: Mr. and Mrs. John D. Cloud

Bernie S. Hargis, Jr.  
By: Mr. and Mrs. Otis H. Turner

Ray M. Harris  
By: Drs. George and Ouida Keck

Mike Hart  
By: COL and Mrs. David C.  
Jackson

Louis Moore Jacks, Sr.  
By: Rev. Wilson Deese  
Mr. and Mrs. Ed Flaig  
Dr. and Mrs. William R.  
Green  
Mrs. Sara Beth Harp

Jonathan Kelly  
*Former Business Faculty*  
By: Mr. and Mrs. Ed Flaig  
Drs. Woody and Freddie  
Jolley

Kathy Knight  
By: Ms. Meredith Foster  
Ms. Rae Lynne Tuck

Helen Lyon  
*Former Music Faculty*  
By: Mr. and Mrs. Charles R.  
Burton  
Ms. Caroline Cagle  
Mr. and Mrs. Joseph Clark  
Mr. Nolan W. Crawford  
Dr. Peggy R. Dorris  
Mr. and Mrs. Ed Flaig  
Dr. Martha E. Hairston  
Drs. George and Ouida Keck  
Miss Evelyn Kittlesby  
Dr. and Mrs. Walter S. Mizell  
Mrs. Dorothy Queen  
Mr. and Mrs. Carl  
Rosenbaum  
Mr. and Mrs. Ike Sharp  
Ms. Margaret J. Shaw  
Mrs. Rebecca D. Strawn  
Mr. and Mrs. Kenneth  
Trammell  
Mrs. Marie B. Whitten  
Miss Helen B. Wilson  
Mrs. Sarah York

Elizabeth Martin  
By: Mr. Gene C. Martin

Linnie Martin  
By: Mr. and Mrs. Wade Allison

Robert A. Martin  
By: Mr. Gene C. Martin

George Neal Mays  
By: Mr. and Mrs. Charles L.  
Parker  
Mr. and Mrs. Ike Sharp  
Mr. and Mrs. Otis H. Turner

Virginia Jones McBride  
By: Mrs. Sue D. Robertson

Betty Miller  
By: Dr. and Mrs. Raymond  
Peoples

Mattie D. Mizell  
By: Mr. and Mrs. John D. Cloud

Betty R. Moss  
By: Mrs. Lawson Hatfield

Melonie B. Narvaez  
By: COL and Mrs. David C.  
Jackson

Eura M. Neel  
By: Mr. and Mrs. Wade Allison

Carol Nix  
By: Mr. and Mrs. John D. Cloud

Jess Odom  
*Former Board of Trustee Member*  
By: Mr. and Mrs. James W.  
Burlson

Mrs. Katsie Oliver  
*Mother of Betty Jo Grant*  
By: Mr. and Mrs. Ed Flaig

Robert A. Patterson  
By: Mrs. Wanda Patterson

Wanda Pearce  
By: Mr. and Mrs. Robert Holley  
Mr. Ray Pearce  
Dr. and Mrs. Raymond  
Peoples

Ethel Powell  
By: Mr. and Mrs. Carrol W.  
Adams  
Mr. and Mrs. Raymond D.  
Anderson  
Mr. and Mrs. Harold W.  
Barber  
Bethany Sunday School  
Class, Downtown  
First Baptist Church,  
Texarkana, TX  
Ms. Jean A. Davis  
Mr. and Mrs. R. H. Hardin  
Mr. and Mrs. Francis H.  
Martin  
Ms. Lavern W. Smith  
Mr. James A. Timberlake  
Mr. John D. Wells  
Mr. John M. Winham

Alan G. Pye  
By: Mr. and Mrs. Mac B. Sisson

Ralph E. Pyron  
By: Mrs. T. Sammie Pyron

Kenda T. Ray  
By: Mrs. Raymond Mays

Otto Riesenbergl  
By: Mr. Nelson B. Eubank

Allie Rose Biggs Robertson  
By: Mr. Odes Robertson

Wilma Ross  
By: Mrs. Lawson Hatfield

Gene Rudolph  
*Former English Faculty*  
By: Mr. and Mrs. John B. Keith

continued on page 18  
Memorial Contributions - 17

# Class Notes

1932

Even though **Rev. Paul Elledge**, founding pastor of Emmanuel Baptist Church in Overland Park, KS, retired in 1975 as Director of Missions for the Kansas City (KS) Baptist Association, he stays busy with Emmanuel's Homebound Ministry. This extension ministry covers twelve area retirement-nursing homes.

1943

**Dr. Wade Armstrong** teaches evangelism at Midwestern Baptist Seminary in Kansas City, MO. He and wife, Shirley, serve as volunteers in the Mission Service Corps of the North American Mission Board.

**Don and Ruby (Wallace) Hook**, who celebrated their 66<sup>th</sup> wedding anniversary September 2, live at the Good Shepherd Retirement Center, 2801 Aldersgate Road #126, Little Rock, AR 72205 and would love to hear from former classmates and friends.

1945

**C.H. Seaton** had five by-pass heart surgery in March but is recovering well, reports wife **Mary Nell (Jernigan, '47)**.

1946

**V. Sue Elliot (fs)** participated in a Christian language camp in Podgarzyn, Poland, for two weeks in August. This was sponsored by

the Wroclaw Language School, which is affiliated with the Wroclaw Baptist Church.

1948

In August, the family of **Hazel (Cain) Tate** and the late **David Tate**, who served as minister of music from 1981-1992 at Batesville (AR) First Baptist, dedicated a Yamaha grand piano to the church in his memory. Special entertainment was provided by Tate children, **Amy ('81)**, **Danny ('78)**, **Becky ('75)**, Carrie and **Debbie ('73)**, and **David ('71)**.

**Bob** and **Thelma Parker** celebrated their 50<sup>th</sup> wedding anniversary in August with a reception at Batesville (AR) First Baptist Church. He's a Southern Baptist minister and retired Naval Reserve chaplain and she is a retired secretary. They have 4 children.

1949

**Bill and Billie (Mosley, '50) Hickem** are retired (again), but he serves as senior adult minister at Brunswick (GA) First Baptist Church and she's a substitute teacher for Glynn County Public Schools. They live in St. Simons Island, GA.

1950

**Mel and Lil (Strickland) Wasson** celebrated their 50<sup>th</sup> wedding anniversary in August with a reception at their Arkadelphia home. She is a retired pre-school teacher and managed the family-owned daycare center for 14 years,

and he is a retired pharmacist. They also served as missionaries to Nigeria from 1954-69. They have five children: **Ken ('74)**, **Tom ('78)**, **Ron (fs76)**, **Doug** and **Mary Ann ('84)**.

**Robert and Bettie (Franks) Mayes** have moved to Sun City, AZ. A retired Presbyterian minister, he still supplies pulpits on occasion and she is a retired teacher.

After spending three years in American Samoa where he served as minister of missions for Mission Services Corps, **Roger and Ruth (Jordan) Baxter** now reside in West Carrollton, Ohio. Still employed by MSC, he is the chaplain coordinator for the State Convention of Baptists in Ohio.

1951

**Sam** and **Mary Alice Sanders** celebrated their 50<sup>th</sup> wedding anniversary in September. He is executive director of Arkansas Enterprises for the Developmentally Disabled and she is employed with the Arkansas Tennis Association. They live in Little Rock.

**Gloria (Hink) Mayo** has retired from teaching and lives in Greenville, TX, with husband **Charles**, a retired minister of music.

1952

**June (Williams) Osborne** has published her second book,

"The Ruby-Throated Hummingbird." Her first book, "The Cardinal," was published in hardback in 1992 and paperback in 1995. She writes extensively about birds and serves on the Advisory Board for the "Wildbird" magazine, a national publication for bird watchers. Husband, **Harold ('52)** is in his 41<sup>st</sup> year as professor of sociology at Baylor University.

1954

**Richard "Lefty" and Billie Romaine (Hall, fs 53) Luster** have moved from Colorado to Texas for health reasons. He writes they live on 1/2 acre of land with no phone but answers all mail. They were married at Ouachita in December 1951, and even though they haven't returned to campus since their 35<sup>th</sup> anniversary, they love to read about former students in the Circle. Would love to hear from former classmates at 208 East Robinson Road, Big Spring, TX 79720-0930.

1955

**Patricia Seery Sisk** just completed her 40<sup>th</sup> year of teaching social studies at Keene, TX.

**Ed Smith** has retired as director of missions for Harmony (AR) Association. Prior to that position, he and wife **Charlene (Clements)** served 17 years as Southern Baptist missionaries to Botswana. They currently live in Pine Bluff, AR.

**Robert and Joyce (Felty)**

## Memorial Contributions

*continued from page 17*

James W. Sanges  
By: COL and Mrs. Robert L. Utley

Floyd O. Shaw  
By: Mr. Nelson B. Eubank

Victoria Brown Shults  
*Mother of Donna Sisson*  
By: Mr. and Mrs. Mac B. Sisson,  
Alan and Stephanie

Walter V. Smith  
By: Mr. and Mrs. David E. Tate

Earl Don Stallings  
By: Mr. and Mrs. Don R. Elliott,  
Sr.

Bessie Standridge  
By: Mr. and Mrs. John D. Cloud

Lawrence G. Stevens  
By: Mr. and Mrs. Jerry D. Pugsley

Emma Lee Stobaugh  
By: Dr. and Mrs. Paul R. Root

David M. Tate, Jr.  
By: Mr. and Mrs. David E. Tate

W. Autrey Thomas  
By: Dr. and Mrs. Trozy R. Barker

Iris H. Thomasson  
By: Mr. John Elrod

Ruth South West  
By: Mr. Wilbur C. West

A. B. Wetherington  
*Former Education Faculty*  
By: Dr. and Mrs. Paul R. Root  
Dr. and Mrs. Cecil C. Sutley

Gertrude Wetherington  
By: Mr. and Mrs. John D. Cloud  
Mr. and Mrs. Joseph A. Franz

Drs. George and Ouida  
Keck  
Dr. Clark W. McCarty  
Mr. and Mrs. Al A.  
McLaughlin  
Dr. and Mrs. Tom Murphree  
Drs. Jeff and Deborah Root  
Dr. and Mrs. Paul R. Root  
Dr. and Mrs. Herman  
Sandford  
Mr. and Mrs. Mac B. Sisson  
Dr. and Mrs. Cecil C. Sutley

David P. Wilcox, Jr.  
By: Dr. and Mrs. Cecil C. Sutley

Mabel Williams  
*Mother of Tom Greer*  
By: Drs. Jeff and Deborah Root  
Dr. and Mrs. Paul R. Root

**IN HONOR OF**  
Dr. and Mrs. Ben M. Elrod  
By: Dr. and Mrs. Raymond  
Peeples  
Dr. and Mrs. Emil Turner

Mr. and Mrs. Johnny L. Heflin  
By: Ms. Catherine H. Mayton

Ms. Lisa Hill  
By: Mrs. Mary L. Howell

Mr. and Mrs. James V. McKinney  
By: Mr. and Mrs. George E.  
McLeod

Dr. and Mrs. Paul R. Root  
By: Mr. and Mrs. Robert Holley

Mr. C. Kenneth Sandifer  
By: Miss Eva L. Gamble

Rev. and Mrs. Jimmy Watson  
By: Dr. John H. McClanahan

# Class Notes

**Hall** celebrated their 50<sup>th</sup> wedding anniversary in August with a reception at Little Rock Second Baptist Church. He's a Southern Baptist minister and she is retired from Baptist Health. They have four children.

## **Jerry and Erkle (Kessinger)**

**St. John** retired in December 1997 and live in Columbia, SC. He retired after 24 years as language program leader with the Southern Baptist Convention and she retired after 20 years on staff at Columbia First Baptist Church.

## **1956**

### **Billy and Jimmie (Jensen, 'fs)**

**Hogue** are retired and live in Little Rock. He worked for 38 years as a public health administrator with the Arkansas Department of Health. They have two daughters and five grandchildren. Would love to hear from former classmates who can email them at [BJHogue@aol.com](mailto:BJHogue@aol.com).

### **Marillyn (Shiver) Nations**

recently wrote that she and former classmate, **Pat (Teeter) Blount** have renewed friendship and Ouachita memories. They are making plans to meet again in the Spring. Marillyn lives in Kingsport, TN, and Pat in Independence, MO.

## **1957**

**Gayle Bone** has enrolled in the chaplaincy resident program at Baptist Medical Center in Little Rock. Prior to that he served as pastor of West Rock Church in Little Rock.

**J.B. Keith** is the 1998 recipient of the John Henry Faulk Award, given annually by the Tejas Storytelling Association for outstanding contributions to the art of storytelling in the Southwest. He retired from a federal government career and now lives in Denton, TX.

**Dennis Dodson** was honored by Monticello (AR) First Baptist Church with a special service and reception in recognition of his retirement from the ministry. He has served that congregation for 20 years as pastor.

## **1958**

**Carole Pearson** retired in June as assistant dean of students for Georgia State University in Atlanta. She served in that position for 18-1/2 years and 6-1/2 years as director of disability services.

**Andy and Alice (Moran) Kerr** celebrated their 50<sup>th</sup> wedding anniversary in October with a reception in North Little Rock given by their children. He's been a

Southern Baptist minister for 43 years and currently pastors in Lonoke, AR. They have three children, **Casey ('72), Tina ('77) and Larry ('82)**.

**Peter Nortier (fs)** is pastor of Hilldale Baptist in Alexander, AR, and involved in CAP-Chaplain.

**Maryhal (Olsson) Hargis** retired in December 1998 from the vocational technical education division of the State of Arkansas.

**Lula (Kincaid) Phillips** retired in June from the Evening Shade (AR) School District after 36 years in education.

## **1959**

**Franklin Cox** lives in Charlotte, NC, and since retiring, does volunteer work with "Love, Inc./Neighbors Who Care."

## **1960**

In July **Hunter Douglas** led a group from Life Line Baptist in Little Rock on a six-day OutBound backpacking trip to Poland as part of a partnership missions project with the European Baptist Convention. Joining the team were his twin sons, **Hunter Riley and John**, who are current Ouachita students. In addition to hiking over some beautiful mountains and touring Auschwitz, he also led Bible study sessions.

## **1961**

**Linda (Jones) Ray** and husband **Ken** live in Batesville (AR) where she teaches careers, Home Ec and CCVE at Newark Junior and Senior High and he's a safety rep for Arkansas Eastman. They lost their 32-year-old daughter, **Kenda**, who died July 18, 1998, at a Little Rock hospital.

## **1962**

**Richard Goodrum** was honored in June by Bloomer (AR) Church in recognition of 25 years of service as pastor.

**Charles Petty** was recently inducted into the Speaker Hall of Fame at a Philadelphia, PA, ceremony. His speaking career as a family humorist began 36 years ago. He and wife, **Jamie (Brewer, '63)** live in Raleigh, NC, where he is president of Family Success Unlimited.

**Kathy (Houghton) Crone**, a registered nurse who lives in Mabelvale, AR, remembers her year at Ouachita as one of the best of her life. She sends greetings to the freshman class of 1961-62.

## **Shelby (Funk) Burruss**

retired from Rockingham County (VA) Public Schools. She is enjoying her eight grandchildren, volunteering and serving on the board of Weekday Religious Education.

## **Anton "Buddy" and Joan (Beard) Uth**

celebrated their 50<sup>th</sup> wedding anniversary in August with a reception at Trinity Baptist in Searcy. A Southern Baptist minister for 40 years, he is currently pastoring Cotton Plant (AR) First Baptist.

## **David and Sandy (Pierce)**

**Holt** were appointed in September by the Southern Baptist International Mission Board to serve as missionary associates in Uganda. He will start and develop churches and she will be involved in outreach ministries.

**June Hines Moore** recently published her second book, entitled "The Etiquette Advantage," which focuses on business and social etiquette. June and husband **Homer ('58)** live in Little Rock.

## **1963**

**Jody Gannaway** was honored in July by Dermott (AR) Temple Baptist Church in recognition of his 40 years in the ministry. He and wife, **Meverine**, have five children.

## **Leroy and Helen (Tanner)**

**French** live in Fort Smith and celebrated their 50<sup>th</sup> wedding anniversary in October with a reception, hosted by their children, at Haven Heights Baptist Church.

**Mel Brown** has been selected to serve a 4-year term on the Commission of Accreditation for Corrections. This commission is comprised of twenty commissioners from the United States and Canada. He lives in Conroe, TX, where he is executive director of the Montgomery County (TX) Department of Community Supervision and Corrections.

## **1965**

**Bill and Rita (Bradley) Neal** began their 27<sup>th</sup> year in Hammond, LA, where he is assistant dean of the College of Education at Southeastern Louisiana University and she is librarian at Ponchatoula High School. They have two children, **Jody**, a nurse anesthetist, and **Michael**, a professional baseball player with the Houston Astros organization in Jackson, MS.

**Gordon Cagle** has retired and lives in Clinton, TN.

## **1967**

**Marty (Johnson) Stubbings**, an underwriter for Hanover Insurance, received her API (Associate in Personal Insurance) designation in 1998. In addition she earned her CIC (Certified Insurance Counselor) in 1997 and her CPCU designation in 1995. She and husband, **A.R.** live in Marietta, GA.

**Clayburn and Jessie (Hice, fs66) Bratton** were appointed by Southern Baptist North American Mission Board as Mission Service Corps district volunteer consultants for the Arkansas Baptist State Convention. The Brattons live in Fort Smith.

## **1968**

**Charlie Jean Harris** retired as a first grade teacher in 1996 from Blytheville (AR) Public Schools, and was honored with inclusion in the Who's Who Among American Teachers that year. During a recent return to campus, she toured Cone-Bottoms Hall where she lived as a student during her early college years. She says she enjoys traveling since retirement.

## **1969**

**John Hilliard**, professor of music and resident composer at the James Madison University School of Music, has been named a Senior Fulbright Scholar for Hong Kong for the academic year of 1998-99. The award is to research and teach for ten months at Hong Kong Baptist University's department of music and fine arts.

**Emma Jean (Crow) and Robert ('82) Cornelius** were elected second-in-command in the Arkansas Royal Grand Chapter Order of Eastern Star and Arkansas Grand Lodge of the Masonic Order, respectively. This is the first time in the history of the Arkansas jurisdiction that a husband and wife held this distinction at the same time. The Corneliuses live in Crossett, AR.

**Benny McCracken** resigned in June as chaplain with the Arkansas Baptist State Convention after 18 years in order to become pastor of a Southern Baptist church near Yellowstone National Park, WY. An avid outdoorsman whose interests include mountaineering, biking, and reading, he trains and handles a search-and-rescue dog. He and wife, **Nita (Robertson)**,

· Continued on page 20

# Class Notes



**REUNION** • Former Ouachita roommates George W. "Dub" DeLaughter (fs'38) and James W. Sanges ('37) enjoyed a reunion at the Gold Tiger Luncheon on April 17, 1998. Col. Sanges became ill the following day, and died on May 23, 1998. The photo above was taken prior to the luncheon and pictures DeLaughter, his granddaughter Sarah Pennington ('89), Sanges, and Gail (DeLaughter) Pennington ('69).

Continued from page 19  
**fs68**, have two children, Shawn and Mary.

**1970**

**Anil Noormohomed, a.k.a. Karim Patni**, teaches science at Midland (TX) junior high school. Karim, who legally had his name changed, has a daughter currently attending the community college there.

**1972**

**Roger and Bobbie (Miller) Margason** live in Springfield, MO where he's salesman for Pit and Mine Industries and she's a teacher.

**1973**

David and **Carol (Fray) Crutchley**, currently serving as missionaries to South Africa, will be moving to Fort Worth where he will join the faculty of Southwestern Baptist Seminary as associate professor of New Testament in August 1999.

**1974**

**Debbie Moore**, who served as a missionary since her appointment in 1982 by the International Mission Board of the Southern Baptist Convention, joined the Mission Support Team of the Arkansas Baptist State Convention in September.

**Jeanne (Anders) Trawick (fs)** and husband Tim are teachers in Conway (AR) public schools. She is the current president of the Arkansas Reading Association and they have two children, Jonathan 14

and Samuel 7.

**1975**

In July, **Gary Rothwell** became senior pastor of Scotch Plains (NJ) Baptist Church. He retired in May 1998 after 22 years of service in the the Army Reserve Chaplaincy at rank of lieutenant colonel.

**1976**

**Marsha Dell (Tolleson) Rhodes** teaches 6<sup>th</sup> grade English and social studies for Piedmont Middle School in San Jose, CA. Husband, Allen, is a satellite engineer for Lockheed Martin.

**Debbie (Jones) Theobalt Montavon** is executive director of DenverWorks, Inc., a ministry that provides job preparation and placement to the low-income of Denver, CO. She has two children, Austin Theobalt, 15, and Morgan Theobalt, 12, and husband Kent has two, Jessie 6, and Emily 4. She writes they are a "happy Brady Bunch."

**Ed Darbonne** is the executive director of development information systems at the University of Illinois.

**1977**

**Brad Rountree** came to Ouachita in the fall of 1973 and joined the OBU Singing Men. After 25 years, there are seven members of that group who still get together every fall and present a concert at one of their churches. This year they performed over Labor Day weekend at Brad's church, New Liberty Baptist in Garland, TX. They

were Dr. Paul Hammond, former director, **David Hays ('77)**, **George Mann ('77)**, **David Williamson ('77)** **George Mayo ('77)** and **Don Parks ('78)**.

**Donna (Koen) Randell** works as controller for America Mineral Fields, a mineral exploration company in Dallas, and lives in Carrollton, TX, with her daughter, Rachael, 12.

**1978**

**Verne and Vicki (Parnell) Wickliffe** live in Malvern where he pastors First Baptist Church and she directs the children's center. They have two children, Kara, 14 and Troy, 11.

**Mark Brooks** recently joined John Maxwell's In Joy Stewardship Services, a church fund-raising group. Prior to that career change, he pastored Elmdale Baptist Church in Springdale (AR) for 15 years.

In June, **Julianna (Nelson) Lorick**, a speech therapist for the Kershaw County School District in Logoff, SC, was presented the House Resolution 5247 from the South Carolina House of Representatives expressing their appreciation for her work with children with autism.

**1979**

**Michael Lee**, pastor of Scottsville (VA) Baptist Church, is working on his doctor of ministry degree at the Baptist Theological Seminary in Richmond. He and wife, Luann, have four children, Brooke, Bethany, Janna and Michael, Jr.

**Donald Ray Williams** is head boys basketball coach at Arkadelphia Junior High School. He and wife Delores, have two daughters Dimitri 4, and Kaitlyn, 3 months.

**1980**

In July, Jon and **Rebecca (Danner) Remley** traveled to China where they adopted daughter, Stephanie Lian. Proud uncle, **Jim Danner ('75)** made the trip with them. The Remleys live in Birmingham, AL, where they are employed in the School of Music at Samford University. He is chair of the instrumental department and she teaches composition, theory, flute and computer music.

**Sara (Purvis) Brown** teaches pre-kindergarten at Watson Elementary in Little Rock. She and husband, Chuck, have two children Laura Kaye, 6-1/2, and Andrew, 4,

and are members of Immanuel Baptist Church.

**Loy "Butch" Haley** returned in November from Sarajevo, Bosnia, where he has spent the past year. He, wife Linda, and children, Will and Rachel, are preparing to move to Riyadh, Saudi Arabia. He is employed with the U.S. State Department.

**William and Rhonda (Francis) Tollett** and children Rachel, 16, and Drew, 15, have moved from Ennis, TX, to Bella Vista, AR, where he will pastor Village Baptist Church.

**Jan Barker**, currently assigned to the American Institute of Taiwan (the U.S. Embassy equivalent) in Taipei, Taiwan, writes that he and wife Lynn were pleased to find an English-speaking Baptist church within two miles of their home and were even more pleased to find that it was pastored by fellow Ouachitonian, **W. E. "Bill" Martin, '76** and wife Joye.

**Gloria Compton** is system administrator for Frigidaire Commercial Products in Conway.

**1981**

**Pam (Tucker) DeLaCruz (fs)** lives in Houston, TX, with husband Jon and daughter Kimberly, 1.

**Karen (Owens) Holloway** is a music specialist at Andrew Jackson Elementary in the Nashville (TN) Public Schools. She and her family live in Franklin.

**1982**

**Kirk and Karen (Williams, '85) Bullington**, missionaries to Dominican Republic since their appointment in December 1993, returned to the States last year where they served as missionaries-in-residence at Ouachita. In October, they were reassigned and joined the staff of Baptist Spanish Publishing House in El Paso, TX, where he will serve as one of the music editors and will translate music into Spanish. The Bullingtons have three children, Ashley 5, Emily 2 and Wesley born in September.

**Paulette (Henderson) Blacknall** was recently named by the Arkansas Friends for Better Schools as one of six educators in Arkansas who are "Public School Heroes." She teaches in the Arkadelphia Public Schools.

**Eddie Jackson** lives in Tahlequah, OK, where he is director of high school and college relations at Northeastern State University. He reports he also just became a

# Class Notes

NCAA men's Division I basketball official.

**Joe Cooley**, recently promoted to Lieutenant Colonel in the Arkansas Army National Guard, is assigned to Camp Joe T. Robinson in North Little Rock and is responsible for all Army National Guard enlisted, officer and warrant officer recruiting in the state. He has two children, Matthew, 13, and Melissa, 11.

**Denise (Clark) Kaniss** is teaching emotionally impaired 4th-6th graders on post at Fort Knox, KY, where her husband, Paul, is stationed. She writes that she and daughter, Jullian, 6, recently visited campus, purchased "stuff" from the bookstore and even visited her old dorm room on third floor of O.C. Bailey.

## 1983

**Karen (Craig) Vance** lives in Texarkana, AR where she's in her 15<sup>th</sup> year of teaching first grade at Kilpatrick Elementary School. Husband, Charles, is minister of music at Beech Street First Baptist Church. She writes that they were married in July 27, 1996, and as a "part" of that marriage, she got three wonderful stepchildren: Bart, Melody and **Cindy ('88)**.

**Jay Curlin** joined the faculty at Ouachita in August as assistant professor of English. He and wife, Bonnie, have five children: Christopher 10, twins Adam and Jacob, 8, Gideon, 5 and Charity, 1-1/2.

**Joe Dan Reed** is executive director and president/CEO of Providence Foundation, Inc., in Waco, TX. He and wife, Susan, have two children, Amanda and Michael.

**MAJ Joey Cunningham** recently completed a one-year tour in Saudi Arabia. Wife Chong and children Kirsten, 5, and Megan, 2, stayed in Ft. Leavenworth, KS. Upon returning in June, they moved to Seoul, Korea, where he is a senior communications officer and advisor to the commander of all communication-related matters.

**Frank (fs '80) and Gail (Martin) Tabler** live in Edmond, OK, and would love to hear from former classmates. They can be reached by e-mail at [tabler.gail@juno.com](mailto:tabler.gail@juno.com).

## 1984

**Dwayne and Patrice (Singletary) Chappell** live in Stuttgart, AR, where he's minister of music at First Baptist Church.

She's a stay-at-home mom with children Patrick, 11, and Ellen, 7.

**Robert Hutchison** has moved to Evening Shade, AR where he will pastor First Baptist Church.

**Nathan Rose**, a loan officer for Countrywide Mortgage Company, lives in Dallas with wife Tina and children Mitch, 12, and Kaitlin, 10.

**Steve and Deanette (Ashabranner, '85) Lynch** live in Flippin, AR where he is athletic director and boys' basketball coach. She recently opened a portrait studio, D.Lynch Photography. They have two children, Trey, 6, and Cassie, 4.

## 1985

**Dr. Gene Trantham** has been selected music director of the Perrysburg (Ohio) Symphony Chorale.

**Susan (Allred) Elliott** lives in Little Rock with husband Sam and sons, Wesley, 1-1/2, and Seth, 4. She is a full-time mom and part-time CPA in public practice, while he's a point-of-care specialist with Abbott Diagnostics.

## 1986

**Stan and Gay (Davidson) Littleford** were appointed in July by the Southern Baptist International Mission Board to serve as missionaries to Kenya where he will teach and coach and she will be involved in outreach ministries. They have three children: Carmen, Kari and Molly Kate.

**Perry Fowler** received his doctor of ministry degree in May from Luther Rice Seminary in Lithonia, GA. He and wife, **Janice (Fowler, fs)** and children Aaren, 8, Joseph, 6, and Avery, 1, live in West Terre Haute, IN, where Perry is pastor of Sugar Creek Baptist Church.

**Kelvin Nicholson** lives in Sherwood (AR) with wife Angela and daughter Shannon, 1-1/2, and is a police lieutenant over criminal investigations/fugitive warrants for Sherwood Police Department.

**Russell and Malisa (Wideman, '89) Eudy** are in Sherwood (AR) where he is high school principal at Abundant Life Schools, and is working on his doctor of education degree. She is a fitness instructor and personal trainer for the Total Fitness Health Club. The Eudys have three children: Candace, 8, Clark, 5, and Kirk, 7 months.

**Melinda (Dodds) Mayo (fs)**

recently completed the broadcast meteorology program at Mississippi State University. She is a certified meteorologist and employed by KATV-Channel 7 in Little Rock.

**Delaine (Houston) Bennett** and husband Stan live in Katy, TX, with their three daughters. She is a full-time mom and active with the children's ministry at First Baptist Church.

## 1987

**Keith Smith** is pastoring Lee Creek Baptist Church near Van Buren, AR. He and wife Renae have one son, Matthew Keith.

**David Paschall** was recently elected to the Mesquite, TX, City Council.

**Brett Wright** owns, along with his brother and sister, Wright's Food Center in Glenwood, AR. They are third generation grocers who are continuing a 42-year tradition. Brett and wife, Lisa, have three children, Kris Ellen, Brooke Erin and Jared James.

## 1988

**Alice Frady** works in public relations for Bay Medical Center in Panama City, FL. She has two daughters, Kristin Galligani, 8, and Brooke Galligani, 6-1/2.

**Jay McAlister** is pastor of Lockesburg (AR) First Baptist Church. He and wife, Katrina have one son, Eli.

**Gina (Ratcliff) Moore** is director of Mothers of Miracles, a Christian ministry which focuses on meeting needs of mothers of preschoolers. An accountant by profession, she continues to contract accounting and spreadsheet solutions from her home. Husband, **John ('89)** is an attorney for Murphy Oil. They live in El Dorado and have two sons, Drew, 3-1/2, and Brady, 1.

**James and Tammy (Keaster) Young** have moved to Berryville (AR) where he's manager of Tyson Foods, Berryville-Green Forest complex. She's a registered dietitian with Carroll County Regional Medical Center and owns a nutrition consulting business covering Arkansas and Mississippi. The Youngs have two children Justin, 6, and Katelyn, 2.

**Jennifer (Nix) Mooney** is a speech-language pathologist with the Star City Schools. She and husband, Brad, live in Monticello where he's a loan officer for Heartland Community Bank.

After living in Philadelphia (PA)

for years, **Melanie Loe** recently moved back to the South when she was transferred to the Dallas branch of Merck & Co. where she is an acute care/hospital speciality products business manager.

**Mary (Norman) Yates** is an account coordinator with Acxiom Corp. in Conway, AR.

## 1989

**Chris and Michelle (Crockett) Turner** were appointed by the Southern Baptist International Mission Board in September to serve on the mission field in Panama where he will work as an overseas correspondent and she will work as office manager.

**Randy and Julia Jones** were appointed for a two-year term of missionary service with the Southern Baptist International Mission Board. They will work with university students in Santa Cruz, Bolivia.

**Margie (Bright) Sexton** lives in Magnet Cove (AR) near Malvern with husband, Steve, and children Logan, 4-1/2, and Sydney, 16 months, and works as a family support specialist for the Arkansas Department of Human Services. She recently returned from visiting her birthplace in Incheon City, South Korea, where she met her oldest brother, Joe, for the first time. Accompanied by her mother-in-law, they traveled all over Korea and were able to stay with Margie's younger brother, who is stationed in Seoul.

**Debbie Arnold Crouch**, received her master of science degree during spring commencement at the University of Central Arkansas, Conway. She and husband, Bob, live in Arkadelphia.

**Shelly (Parker) Gentry** has moved to Walnut Ridge, AR, with husband Lee and daughter Caroline, where Lee is the administrator for Lawrence Memorial Hospital and Health Services. She is a full-time mom.

## 1990

**Greg and Deb (Elliott, fs) Phillips** live in Sheridan, AR, with two children, Garrett, 2-1/2, and Rachel, 1. He works as an aquatic biologist at G,B,Mc & Associates in Bryant, AR.

**Don Smith** is stationed at Fort Rucker, AL, where he's a budget/facilities manager and will soon be a company commander of an

Continued on page 22



# Class Notes



**FUTURE OUACHITONIANS** • Cousins Chandler Francis and Morgan Beck model Ouachita t-shirts, gifts from the alumni office to babies of OBU graduates. Chandler is the son of Shawn and Ashli (Spann) Francis, and Morgan is the daughter of Brian and Paige (Spann) Beck. Grandmother Nancy Spann serves the University as Director of Talent Search for TRIO Programs.

• Continued from page 21

instructor pilot company. He lives in Ozark, AL, with wife Kristi and daughters, Taylor Nikole, 4-1/2, and Emily Allison "Allie" born in June.

**Len Fryar** works for Smith Barney, Inc., in Little Rock. He and wife, Anissa, have three children Haylee, 4, Hannah, 3, and Trace, 1, and live in Arkadelphia.

**Kelli (Lambert) Gilbreath** and family have returned from South Korea to Dayton, OH, where husband, Greg, is working on his master's in aerospace engineering. They have one son, Nathaniel, 3.

**Kyle and Jeannie (Ross) Ratliff** are employed by Axiom Corporation in Conway, AR. He's an account manager for a major bank account and she's an internal project leader. They have two children, Kayleigh, 7, and Calvin Tyler, 4.

1991

**Lydia (Fowler) Stevenson** and husband Sean moved from Fort Worth to Huron, OH, where they will serve as home missionaries and church planters for the North American Mission Board. After teaching 8 years, she will be staying home with daughters, Abby, 21 months and Cara Ann, born in April.

**Keith and Cindy (Billings, '90) Sangalli** live in San Antonio, TX, where he's an underwriter with USAA Insurance Company. She teaches aerobics at First Baptist Church and is an independent kitchen consultant for The

Pampered Chef.

**Julie DeVorak (fs)** was commissioned in July by the International Mission Board as a missionary journeyman to Guinea, West Africa.

**Stephanie (Ward) Cloud** is financial aid officer at Arkansas Tech in Russellville.

**Rena Green** is assistant principal for the elementary/middle school at Fouke (AR) Public Schools.

**Wade Totty** has been called as pastor of Sparkman (AR) First Baptist Church.

**Jennifer "Anne" Hamner** has opened her podiatry medical practice at NPMC Health Central in Hot Springs where she is a specialist in surgical and non-surgical treatment of foot disorders.

**Rob Potts** lives in Springdale, AR, with wife Cara and children Jason, 3, and Emily Nicole, 1.

1992

**Dennis and Jody (Roberson, '93) Janz** have moved to Avinger, TX, where he will pastor Lake O' the Pines Baptist Church. They have two sons, Andy 3 and Josiah 1.

**Phillip Miller** is pastor of Blossom (TX) First Baptist Church. He and wife Katrina have two children, Alyssa, 6, and Austin, 3-1/2.

**Shawn and Jennifer (Johnson '93) Barnard** and children Kristen and Kevin live in Monticello, AR, where he is pastor of Second Baptist.

1993

**Christy (Tosh) Crider** and husband Marcus live in Nashville, TN, where they are both attorneys.

**Melanie (Barr) Bonam (fs)** lives in Duncanville, TX, where her husband David is youth pastor at Calvary Baptist. They have one son Ryan who was born in August 1998.

**Tonya (Jones) McKinney** is working on her master's degree in library media and informational technology at UCA. She and husband, Mark, live in Bryant, AR.

**Robby Sherman** has joined the staff of Parkway Place Church in Little Rock as student pastor. He and wife, **Natalie (McDaniel, fs94)** moved there from Van Buren.

**Michelle Smith** returned in August from a mission assignment in Guinea, West Africa, and is back in Dallas where she's director of financial accountability for Pioneer Bible Translators.

**Tony and Mary Jane (Lee, '92) Hutchins** live in Bellevue, NE, where he plays bass trombone in the USAF Heartland of America Band and the USAF Notables Jazz Band at Offutt AFB, NE. He also is music director at Chandler Acres Baptist Church. She stays home with children Sarah Jane, 3-1/2, and Joshua, 6 months.

**Cassandra (Sample) Feltrop** is director of marketing for White County Memorial Medical Center in Searcy, AR. She and husband Frankie have two daughters, Jordan, 3, and Reagan, born in June.

**Shawna Childs** is teaching at Perritt Elementary School in Arkadelphia.

**Tara (Holmes) Scritchfield** is employed by Marshfield School District as an early childhood special education speech pathologist. She and husband, John, live in Springfield, MO.

**Al Pollard** lives in Fort Smith where he teaches elementary school physical education.

**David and Tina (Hawthorne, '94) Murphy** have moved to Versailles, KY, where he's a veterinary intern. He graduated in May 1998 from Texas A&M School of Veterinary Medicine and she graduated from Texas A&M with degree in animal science.

**Jed Harris** is youth director for Greenwood (AR) First Baptist Church.

1994

**Drew Smith** is a Ph.D. student in New Testament at University of

Edinburgh, Scotland.

**Kyle Wiggins** is a police officer with the Memphis Police department. He is currently attending an 18-week MPD training academy, after which he will receive his assignment.

**Susan (Rhoads) Dupuis** received her masters and is completing her Ph.D. in social psychology from the University of Memphis. She and husband, James live in Baton Rouge.

**Darin and Doris (Decker, fs93) Peterson** live in McHenry, IL, with their four children, Kayla 8, Holly, 7, Lauren, 3 and Nathaniel, 20 months. He is a church planter sponsored by the McHenry First Baptist and has started a church in Richmond, IL.

**Kipper Clarke** and wife Holly have settled in Norcross, GA, where he is employed by John Maxwell's In Joy Ministries in the seminar and marketing division. He completed his MBA in marketing at the University of Arkansas in Little Rock in August.

**Kevin Chambliss** earned his Ph.D. in chemistry from Colorado State University. He lives in Oak Ridge, TN, where he does research on nuclear waste disposal.

**Leah Liberator** is studio manager for Rivendell Recorders and Sunrise Recording Services in Houston, TX.

**Jon Self**, who received his master's degree in foreign language education in May from University of Texas, has been selected as a 1999-2000 Rotary International Ambassadorial Scholarship recipient to study language and law at Temple University in Tokyo, Japan.

**Alison (Egelhoff) Crane** and husband Shawn, live in Benton where he's minister of music at Spring Creek Missionary Baptist Church and she is employed at Cherry's Hallmark. They are looking forward to birth of their first child in April.

**Quinton and Stacey (Slaten) Miner** recently moved to Virginia Beach, VA. He graduated in May 1998 from LSU Dental School and is serving as a dentist for the U.S. Navy in Norfolk, VA. She completed her master's degree in history from University of New Orleans and is teaching ninth grade English at a private school in Suffolk, VA.

**Jason Phipps (fs)** is attending Louisiana Tech in Ruston where he's seeking a degree in horticulture.

**Jeff and Christy (Akins)**

# Class Notes

**Browner** are in Memphis where he's youth minister at Ridgeway Baptist and is completing his MDiv. degree at Mid-America Seminary. She received her master of arts and teaching degree from University of Memphis and is teaching English at Central High School.

**Jeff Elmore** received his master of arts degree in Christian education from Southeastern Baptist Seminary in Wake Forest, NC. He lives in Lewisburg, West Virginia, where he is minister of education and youth at First Baptist Church.

**Jim and Janna (Southland, fs'93) Maxwell** reside in North Augusta, SC, where he's employed at Eisenhower Army Medical Center. He received his doctor of medicine from UAMS in Little Rock in May 1998. Janna earned her BS in nursing from UAMS. They can be reached by e-mail at [jrmxwell@worldnet.att.net](mailto:jrmxwell@worldnet.att.net).

1995

**Marcus and Susan (McCartney, fs'92) DeVorak** live in Des Arc, AR, with their two children, Luke, 5, and Natalie, 2. He's a farmer and she is a travel agent with World Travel in Searcy.

**Sarah Green** is in her fourth year of teaching fifth grade at De Queen (AR) Elementary School and is working on her master of library science degree from University of North Texas.

**Joy Wommack (fs)** lives in Irving, TX, and works for a marketing company while attending graduate school.

**Laura (Pennington) Lockwood** graduated in May 1998 from Colorado State University with master of science degree in nutrition and exercise science. She and husband, Chad, live in Hot Springs and she works for Baptist Medical Center in Arkadelphia.

**Tonya Beavert Lonon, Missy Whitehead Krebs and Mark White** passed the Arkansas Bar this summer. Tonya and Missy graduated from UALR School of Law in Little Rock, and Mark from University of Arkansas Law School/Fayetteville.

**Stephen Granade** received his master of arts degree from Duke University, Durham, NC, during spring commencement.

**Daytra Rogers** is the student relations coordinator for the Educational Talent Search of the TRIO program at Ouachita.

**Alan and Julie (Merrick, '96)**

**Roark** live in Henderson, TX, where she teaches fifth grade and he is young adult minister at Calvary Baptist Church. They are expecting their first child in March.

**Janice (Jones) Porter (fs)** and husband Mark have moved to Gillette, WY, where he will be starting a mission church. She will be teaching third grade.

**Virginia "Ginny" Vaught** is an associate production manager for Thoma & Thoma Creative Services in Little Rock where she will be responsible for project coordination and delivery and will assist with print production projects.

**Audrey Weaver** received her degree in radiation therapy in May 1998 from the University of Texas/Galveston. In July, she joined the staff of M.D. Anderson Cancer Center in Houston. She writes she could not have accomplished what she has without Ouachita, the biology department, i.e., Dr. Tim Knight, Richard Brown and Drs. Vince and Lisa Cobb.

**Amy (Cobb) Jordan** is a voice teacher in Richardson (TX) I.S.D. She and husband, Daniel, live in Plano.

**Melodie Pike** is the testing and evaluator of birth-three-year-old program for the United Cerebral Palsy in Little Rock.

1996

**Eddie Struble** and wife Anna-Marie have moved to Tampa, FL, where he is minister of music and youth at Idlewood Baptist Church.

**Matt Pryor** lives in Beebe, AR where he teaches in the elementary school and is minister of youth and music at Union Valley Baptist Church.

**Bruce Cullom** lives in Nashville, TN, where he is employed by Gibson Musical Instruments.

**Shannon Littmann** is currently in Barranquilla, Colombia, where she teaches English and literature to 8<sup>th</sup> and 10<sup>th</sup> grades. She will be returning to the States in June 1999.

**Jessica Franks** is associate producer at Little Rock's KARK-TV Channel 4's morning news program, "Sunrise."

**Chad Gallagher**, 22, was recently elected mayor of De Queen, AR. He is among the youngest ever elected mayor in the state. He and wife, Jessica, own and operate a Christian bookstore and have a 10-month old daughter, Hannah, and are expecting another child in June.

**Michelle McGill** lives in Little Rock with 3-year old son, Hunter Rhett Tuggle, and teaches first grade at Booker Arts Magnet School. She earned her master's in education degree with emphasis in reading from UALR this summer.

1997

**Lannie and Jennifer (Tolbert) Byrd** live in Marion, AR, where he's media producer and broadcasting instructor at Mid-South Community College in West Memphis and she's a high school teacher at West Memphis Calvary Baptist Academy.

**Kaleb and Priscilla (Shrader) Barrett** reside in Sherwood where she's relations manager for Maverick Transportation and he's employed by Axiom in Conway.

**Brent Williams** has been promoted to account executive at Cranford Johnson Robinson Woods, an advertising, marketing and public relations firm in Little Rock.

**LeRoy and Jenny (Orr, '96) Twisdale** are in Little Rock where she's a college recruiter for Alltel and he's manager of Eagle Systems, an environment cleaning supply company.

**Jaime (Fulton) Melcher** is a student services specialist at Eastfield Community College in Dallas, TX.

**Randy Odom** is in Memphis, TN, where he is assistant director of Eikon Ministries/Kids Across America.

**Brian Glass** is assistant football coach at Arkadelphia High School.

**Angela (Green) Taylor** is administrative assistant in the admissions office at Arkansas Tech in Russellville and husband, Jesse, is assistant manager at Wal Mart.

**Ryan and Angel (Cannell) Duncan** live in New Haven, CT, where he attends the Yale School of Divinity and she works as a bank teller.

**Mark Conine** is a tax accountant for Alltel and wife **Dawn (Hasley)** teaches 2<sup>nd</sup> grade at Washington Magnet School in Little Rock.

**Genny Cassaday** is an account executive for Nicholson Communications, a Little Rock advertising/public relations firm owned by OBU grad, **Steve Nicholson, '80**.

**Britt Howard** and wife CarrLee live in Los Colinas, TX, where he works for Wells Fargo, a

personal banking investment company.

**Mert Hershberger** serves as assistant pastor at The People's Church in South Bend, IN, while attending the University of Notre Dame. He plans to graduate in January with a master's in Biblical studies and ancient languages and to begin studies for a M.A. through William Carey International University.

**Allen and Carol (Hazelwood) Sutton** are living in North Dallas, where he's a software engineer at Raytheon Systems and she's a speech pathology assistant working for the Scurry-Rosser (TX) I.S.D.

**Joy Barber** is a buyer for Alliant Food Service in Little Rock with plans to move to Okinawa, Japan, in March 1999.

In May, **Lane Bailey** received his master's degree in Russian history from Brown University in Providence, RI, and is currently working on his Ph.D. there.

**Will Harris** is band director at Heber Springs (AR) Middle School.

**Leslie (Tapson) Harper** and husband Jason are performers at Dollywood in Pigeon Forge, TN, in a musical which runs from August 1 until January 2.

1998

**Matthew Rhoads** is working on a PsyD in clinical psychology at Forest Institute in Springfield, MO.

**Courtney Martin** lives in Plano, TX, and teaches in the Allen School District.

**Thierry Vodounou** works at ABNAMRO Bank Trade Services in Chicago as a letter of credit specialist.

**Nathan and Amber (Turbyfill, '97) Hurst** live in Hot Springs where he is quality control biologist and supervisor of hatchery laboratory for Hubbard Farms and she teaches kindergarten at Gardner Primary School.

**Billy Bird** is a public relations assistant with Stone & Ward, a Little Rock advertising firm.

**Brad Bettis** and wife Beth live in Lewisville, TX, and he's employed by State Farm Insurance in Addison.

**Yanci Grady** has joined Little Rock company T4 Systems, which builds computer hardware and software, as a technical sales consultant.

**Cari Winemiller** is special education teacher for K-2 for Hope (AR) Public Schools.

Continued on page 24

# Class Notes

Continued from page 23

**Norman Glen Fowler** will complete graduate school in December at University of Arkansas/Fayetteville and plans to enter the doctor of philosophy program there.

**Holly Brooks** lives in Plano, TX, and teaches in the Allen School District.

**Peter and Theresa (Gillespie) Cunningham** have been assigned to Las Vegas by the North America Mission Board where he will serve as a US-2 missionary. He will start multi-housing ministries. She's working as assistant to the lawyer for United Title of Nevada.

## Faculty/Friends

**Bill Sutton**, head volleyball coach and head resident for Conger Hall at Ouachita, received his master of education degree in spring commencement from Hardin-Simmons University, Abilene, TX.

**Sharon Morgan**, former women's basketball coach at Ouachita, has moved from Austin, TX, to Nashville, TN, where she will serve as director of operations for the ABL professional women's basketball team, The Nashville Noise.

**Raymond and Agnes Coppenger** were named "Volunteers of the Year" for Clark County, AR. Dr. Coppenger, retired professor of religion and philosophy and who recently turned 89, and Mrs. Coppenger, who served as administrative secretary for the Former Students Association and director of the Alumni Office for 16 years until her retirement in 1986, are two of the biggest "givers" in Arkadelphia in terms of time and energy devoted to volunteer activities.

## MARRIAGES

1946

**W. Harold White** to Vera Berry, July 17, 1998, Benton, AR.

1960

**Dick Norton** to **Martha (Wilson) Jones (fs)**, notified February 1998, Little Rock.

1976

**Marsha Dell (Tolleson) Langston** to Allen R. Rhodes, June 6, 1998, San Jose, CA.

**Debbie (Jones) Theobalt** to Kent Montavon, April 25, 1998, Denver, CO

1987

**Drew Alan Baker (fs)** to Tiffany Laine Cook, August 1, 1998, Little Rock, AR.

1988

**Mary L. Norman** to Doug Yates, April 25, 1998, Heber Springs, AR.

**Shannon Lynn Drobeno (fs)** to Geoffrey Christopher Gwinn, October 10, 1998, Little Rock.

**Kristal Noel Rollins (fs)** to Jason Morton, October 3, 1998, England, AR.

1990

**Mitch Bettis** to Meg Gannon, July 11, 1998, Liberal, KS.

**Scott Snider** to Mary Patricia Keathley, July 11, 1998, Danville, AR.

1993

**Deena Willard** to Steve Sellars, June 27, 1998, Amarillo, TX.

**Kristin "Kiki" (Young) Bretches** to Brett Jones, July 5, 1998, Mt. Pleasant, TX.

1994

**Belynda Ann Keller** to Robert Shawn Hagar, June 20, 1998, Batesville, AR.

**Kerri Whitlock** to **John "Rusty" Ross ('96)**, August 1, 1998, Gurdon, AR.

1995

**Laura Healy (fs)** to Clint Crabtree, August 7, 1998, Arkadelphia, AR.

**Charity Ann Godbee (fs)** to Alex Lance Wittenburg, September 12, 1998, North Little Rock, AR.

**Richard Williams** to **Jenny Mills ('97)**, July 11, 1998, Arkadelphia, AR.

**Donnita Jo Bell** to Donald Tubbs, October 25, 1997, Sheridan, AR.

**Melanie M. Trull** to Earnie Bennett Lewellen, October 17, 1998, Magnolia, AR.

**Krista Marie Brown** to James Cully Joyce, October 3, 1998, Harleton, TX.

**Tonya Beavert** to Justin Heath Lonon, August 8, 1998, Little Rock, AR.

1996

**Eddie Struble** to Anna-Marie Morrisson, February 14, 1998, Memphis, TN.

**Chet White (fs)** to Elizabeth Ashley Caldwell, July 11, 1998, Benton, AR.

1997

**Christi Gilliland (fs)** to **Paul D. Watson (fs '98)**, August 15, 1998, Sanford, TX.

**Amber Turbyfill** to **Nathan Hurst ('98)**, July 11, 1998, Hot Springs, AR.

**Kimberly Renee Taylor (fs)** to James Kyle Patterson, May 23, 1998, Little Rock, AR.

**Meredith Rae Jones** to James Krisell, December 13, 1997, Benton, AR.

**Elizabeth Ann "Beth Ann" Richardson** to Trey L. White, August 1, 1998, Crossett, AR.

**Rebecca Herndon** to **C. Shane Wooten (fs '96)**, August 8, 1998, Crossett, AR.

**Carol Anne Hazelwood** to **G. Allen Sutton ('98)**, September 12, 1998, Atlanta, TX.

1998

**Lendy Seaberry** to **Sean Nicholson**, June 13, 1998, Azle, TX.

**Joey Watkins** to **S. Shea Pearce**, June 6, 1998, Hayti, MO.

**Clayton Saunders** to Amy Kristine "Kris" Driskill, July 11, 1998, Frisco, TX.

**Mendi Stiles** to **Kevin Schutte**, July 25, 1998, Arlington, TX.

**Stephen Strawn** to **Melode Rose (fs)**, June 27, 1998, Benton, AR.

**Justen Wooten** to Salli Summer, October 10, 1998, Hot Springs, AR.

## Current Students

**Kieth Nosker** to **Susan Beal**, August 1, 1998, Arkadelphia, AR.

**Nathaniel "Nathan" Nipper** to **Trevlyn Merritt**, July 18, 1998, DeSoto, TX.

## BIRTHS

1977

**Timothy** and **Nancye McCowan**, daughter Hannah Kyle, November 7, 1997, Omaha, NE.

1979

**Gary** and **Cathy Stallings**, daughter Abigail Joy, April 16, 1998, Frisco, CO. Joins brother Joshua Michael, 2-1/2.

1980

**Jon** and **Rebecca (Danner) Remley**, daughter Stephanie Lian, born November 25, 1997, adopted in July 1998 from China.

1981

**Charles** and **Jill (Jackson) Dunlap**, daughter Catherine Grace, June 29, 1998, Little Rock. Joins Caleb, 9, Caitlin, 7, twins Caroline and Callie Anna.

1982

**John** and **Linda French**, daughter Shelby Leigh, July 26, 1998, Clinton, MO.

**Kirk** and **Karen (Williams, '85) Bullington**, son Wesley Kirk, September 9, 1998, Arkadelphia. Welcomed by sisters Ashley and Emily.

1983

**Rick** and **Tandra Johnson**, daughter, Alixandria Suzette, July 14, 1998, Dallas, TX.

1984

**Mark** and **Kathy (McElduff) Johnson**, son Kenneth Carl "Kent," May 13, 1998. Joins brothers Will and Luke.

**Terry** and **Janice Daniell (fs)**, daughter Jessica Jordan, November 4, 1998. Welcomed by brothers T.J. and Troy.

1985

**Sam** and **Susan (Allred) Elliott**, son Sawyer Wesley, April 28, 1998, Little Rock. Welcomed by brother Seth 4.

1986

**Steve** and **Beth (Graves, '87) Snider**, daughter Shelby Elizabeth, June 14, 1998, Little Rock. Welcomed by brothers, Jack, 5, and Chase, 2-1/2.

**Matt** and **Susan (Butler) McBeth**, son Joseph Robert, June 19, 1998, Springdale, AR.

**Mark** and **Kenda (Reeves) White**, son Caleb Edward, September 15, 1998, Little Rock.

1987

**Brett** and **Lisa Wright**, son Jared James, February 28, 1998, Glenwood, AR. Joins sisters Kris Ellen and Brooke Erin.

**Steve** and **Amanda (Jones, '90) Pascoe**, son Hugh Bennett, July 16, 1998, Conway, AR.

1988

**Chris** and **Lucretia (Collier) Ragan**, daughter Madison McKenzie, August 18, 1998, Hot Springs. Joins brother Dylan Sean, 4.

**Evan** and **Audra (Bolhouse, fs) Aldridge**, daughter Madison Grace, January 20, 1997, Bethany,

# Class Notes

OK. Notified July 1998.

1989

**John and Meredith (Fairhead, fs) Blase**, daughter Sarah Elizabeth, July 13, 1998, Stephens, AR. Joins brother Will, 1.

Brendan and **Sarah (Brattain) Schaefer**, son Aidan Leith, May 9, 1998, Tacoma, WA.

Jonathan and **Leigh Anna (Gosser) Askins**, son, Jonathan, Jr., July 12, 1998, North Little Rock.

1990

Jodie and **Jodi (Kirby, fs) Dildy**, son Kirby James, June 30, 1998. Welcomed by sisters Meaghan, Keely, and Sydney.

**Brett and Shelly Rogers**, daughter Callie Grace, September 10, 1998, Joins brother Carson, 2-1/2.

**James "Rick" and Jacqueline (Flemming) Holt**, son Joshua Luke, March 10, 1998, Deer Park, TX.

**Terry and Becky (Steele, fs91) Sergeant**, son Graham Thomas, September 14, 1998, Arkadelphia, AR.

Mark and **Rhonda (Ray) Bell**, son Joshua Grant, November 3, 1998, Katy, TX.

1991

Sean and **Lydia (Fowler) Stevenson**, daughter Cara Anne, April 17, 1998, Fort Worth. Welcomed by sister Abby 21 months.

Michael and **Wendy (Ratcliff) Welch**, son, Michael Zachary, September 11, 1998, Coppell, TX.

**Rob and Cara Potts**, daughter Emily Nicole, October 28, 1997, Springdale, AR. Joins brother Jason 3.

Perry and **Alicia (Phillips) Tribble**, son Luke Perry, October 7, 1998, Monticello, AR.

**Lex and Patty Mickle**, son Rance Jackson, June 15, 1998, Mansfield, AR. Joins brother Rayne.

1992

Ky and **Teresa (Miller, fs) Harrod**, son Andrew Jensen, September 16, 1998.

**Corey (fs) and Deborah (Hillman, fs98) McMillan**, son Cole David, October 16, 1998, Arkadelphia, AR. Welcomed by sister Samantha, 5.

**Kyle and Rebekah (Kinney, '93) Hollaway**, son Andrew William, April 1, 1998, Little Rock. Joins

Moriah, 3-1/2, and Benjamin, 2.

1993

Frankie and **Cassandra (Sample) Feltrop**, daughter Reagan Abigail, June 25, 1998. Welcomed by sister Jordan, 3.

**Tony and Mary Jane (Lee, '92) Hutchins**, son Joshua Lane, June 25, 1998, Offutt AFB, NE.

David and **Melanie (Barr, fs) Bonam**, son Ryan Christopher, August 20, 1998, Duncanville, TX.

**Chris and Dayne Maloch**, son Ryan James, September 8, 1998, Little Rock.

Phillip and **Faith (Kennedy) Forsythe**, daughter Kennedy Elaine, June 21, 1998, Laurel, MD.

1994

Todd and **Christy (Cowling) Wallace**, daughter Carley Grace, May 11, 1998, Texarkana, AR.

**David and Karrie Goodman**, daughter Adeline "Addie" Maude, September 14, 1998, Arkadelphia, AR.

1996

**Steven and Colleen Carr**, daughter Faith Elizabeth, June 2, 1998.

**William and Rebecca (Saunders, '94) Wright**, son, Andrew Deward, September 10, 1998, Arkadelphia. Joins brother William, 1-1/2.

1997

**Zine and Karen (Cowling, '96) Smith**, son Conner Bruce, September 9, 1998, Huntsville, AL.

Faculty/Staff

**Mike and Jill Jones**, daughter Alissa May, July 11, 1998, Arkadelphia. (*Mike is associate professor of art at Ouachita; Jill is former secretary to the Dean of Arts and Sciences.*)

DEATHS

1925

**Dr. Robert Wilson Rankin (fs)**, July 29, 1998, Harrison, AR.

**Clara (Boswell) McClendon**, November 15, 1998, Waldo, AR

1927

**Thelma Mae (Strider) Johnson**, May 21, 1998, Memphis, TN.

1931

**Evelyn (Beaty) Summers**, October 2, 1998, Hot Springs, AR.

1933

**Jane (Jamison) Birkhead (fs)**, July 1, 1998, Albuquerque, NM.

1934

**Blanche (Fleming) Marler**, November 24, 1998, Alexandria, LA.

1936

**Bill Fulcher**, September 11, 1998, Carlisle, AR.

**Bessie Mae Elcan**, September 18, 1998, Lonoke, AR.

**Jimmie (Brock) Baylor**, October 23, 1998, Austin, TX.

**Nolan W. "Brownie" Crawford**, October 31, 1998, Little Rock, AR.

1940

**Adrian Blankenship**, December 29, 1997, Naples, FL.

**Louis M. Jacks, Sr.**, October 3, 1998, Fort Smith, AR.

1941

**Mary Ellen (Beaumont) Boatright (fs)**, September 13, 1998, Cotter, AR.

**Robert A. Martin (fs)**, July 1998, Cheyenne, WY.

1947

**Dorothy "Dottie" (Vance) Bird**, April 11, 1998, Morrilton, AR.

**Lois (Smithers) Cook (fs)**, notified July 1998, Benton, AR.

**Thomas T. Walker (fs)**, May 31, 1998, Gideon, MO.

1949

**Bernie S. Hargis, Jr.**, October 18, 1998, Warren, AR.

**Jack D. Farris**, November 26, 1998, Wheaton, MD.

1950

**Elmer E. Haley**, July 28, 1998, Jonesboro, AR.

1951

**Connetta Elaine (Smith) Roach**, July 29, 1998, Bearden, AR.

**Dayta (Garrison) Grogan**, May 3, 1997 (OBU notified November 1998), Grandview, MO.

1952

**George N. Mays**, August 11, 1998, Pine Bluff, AR.

**Charles Chesser**, August 5, 1998, Carlisle, AR.

1953

**Idella (Vaughn) Webb**, July 26, 1998, Broken Arrow, OK.

1957

**Herbert Jennison**, August 31, 1998, Scottsdale, AZ.

**Mary Nell Robinson Miller**, July 8, 1998, Grand Prairie, TX.

**Jackie (Hall) Quick (fs)**, September 25, 1998, San Antonio, TX.

1958

**Fred Buck**, May 4, 1997, notified August 1998.

1962

**Martin Schlueter**, December 15, 1997, Huntington Beach, CA. Served as hospital chaplain for 30 years. Scholarship fund established at Golden Gate Baptist Theological Seminary, Mill Valley, CA 94941.

1963

**Jerry Lee Jackson**, February 9, 1998, Conway, AR.

**Charlotte Beard Wade**, November 27, 1998, Malvern, AR.

1967

**Dale H. Cartmel**, September 27, 1998, Hooks, TX.

1969

**Robert "Bob" Fairchild**, October 7, 1998, Heflin, AL.

**James H. O'Cain**, November 26, 1998, Mabelvale, AR.

1970

**Alan Pye**, August 25, 1998, Fayetteville, NC.

1971

**James P. "Pete" Stafford**, November 28, 1998, Vicksburg, MS.

1979

**Dorothy Clark**, November 3, 1996, notified September 1998, Cotton Plant, AR.

1985

**David Wilcox**, July 1998, Houston, TX.

1992

Infant son, Josiah James, of **Tim and Robin (Carneal) Fowler**, September 19, 1998, Jensen Beach, FL.

Faculty/Staff/Friends

**Helen Lyon**, July 19, 1998, Little Rock. (*Miss Lyon was retired associate professor of music.*)

**Jesse P. Odom**, September 9, 1998, Little Rock. (*Mr. Odom was a former trustee.*)

# The Financial ADVISER

Ouachita Baptist University • Arkadelphia, Arkansas 71998 • Winter 1999



**John Cloud, J.D.**  
ASSOCIATE  
VICE PRESIDENT  
FOR ESTATE AND  
GIFT PLANNING

Would you like to have an entertaining and captivating program that will be of benefit to your club or church group? Ouachita is offering a seminar on estate planning in which I and others illustrate how people can avoid unnecessary taxes and fees, avoid probate, save time and money, and generally make the most of their resources. I can tailor-make the program to fit the audience and the allotted time-frame.

You might wonder how such a supposedly dry subject could be entertaining and captivating. First, folks usually pay attention when the issues involve their money, taxes, and the well-being of their spouses and children. Second, computer technology has enabled me to prepare a colorful slide presentation that is implemented through a magnificent laptop computer and a special projector. Entertaining? Perhaps, but certainly informative and beneficial. Estate planning is a subject many people avoid, thus the sad fact that a majority of Americans have done little or nothing in this regard.

This is not a give-to-Ouachita program. I cover a multitude of planning options, including charitable planning, but there is no push or pitch involved. Certainly we are grateful for any provisions for Ouachita, but the primary purpose of our seminar is to shed light on something that impacts all of us deeply and intimately. Call me at 870-245-5169, or write at OBU Box 3754, Arkadelphia, AR 71998, if you wish to discuss this offer in more detail.

## Why consider a trust?

When we think of leaving our assets to family members or charitable organizations, this question often comes to mind: "Should I leave the assets outright or put them in a trust?"

Over the years, as estate planning has grown more sophisticated, many commentators have promoted the idea of using a trust to transfer assets. After all, using a trust avoids probate. And probate is to be avoided no matter what, right? Not necessarily.

### The Transfer of Assets

The first thing people must know about probate is that it is simply the process of proving the validity of a will. Probate means "to prove" in Latin. Assets transferred at death by the terms of a will are subject to probate.

Not everything in a person's estate is transferred by will, however. The form of ownership of an asset also determines its disposition. For example, if a home is jointly owned by two spouses, the home will not be subject to probate.

Also, assets that pass by contract, such as life insurance proceeds, are not subject to probate. But this does not mean that trust assets, no matter how they are transferred at

death, are free from estate tax consideration.

### The Aspects of a Trust

Then why consider a trust? For one thing, because it often allows the assets you place in trust to escape being part of the basis for executor's or attorney's fees. Another, and probably much more meaningful, reason for considering a trust is that you can obtain professional management of the assets.

There are essentially two kinds of trusts: inter vivos (or living) trusts, those created to take effect during your lifetime, and testamentary trusts, those created in your will. A trust established through your will does not go into effect until after your lifetime; then it becomes irrevocable. If you establish a trust during your lifetime, you have the option of making it irrevocably or revocably.

The assets of a revocable trust are included in your estate (and therefore subject to estate tax). Assets transferred to an irrevocable trust are generally removed from your estate at the time the trust is established and usually are not subject to estate tax.

Keep in mind that establishing a trust should be considered in the context of your overall wishes, not simply from the perspective of avoiding probate or taxes. For more information, visit an attorney who specializes in estate planning matters.



#### DONOR BANQUET •

President Andy Westmoreland shares an update on Ouachita with the University's donors at the annual Donor Banquet held November 14. Members of the Hall of Honor, Circle of Excellence and President's Associates were honored by the University during an evening "Down on the Farm."

# All about Living Trusts

A living trust is just what its name implies—a trust you establish while you're living. You have the ability to revoke or change the terms of the trust at any time during your life. And although it is not normally intended to completely replace a will, a living trust can be an effective way to maintain control of property during your lifetime—and a private way to dispose of it after your lifetime.

While reducing probate costs often plays a role in the decision to create a living trust, control of the assets and privacy tend to be the driving reasons behind establishing one. Avoiding or reducing estate taxes, however, should not be a real consideration (unless the trust beneficiary is a charitable organization like ours), because the assets in a living trust are generally included in a decedent's taxable estate.

## The Advantages

When you establish a living trust, you can add or withdraw

income or principal at any time, remove the trustee and appoint a successor trustee, and maintain control over the management and administration of the trust's assets.

A living trust is also a way to make certain that, in the event you should ever become incapacitated, the trust assets will continue to be well managed. Plus, Living Trusts can provide greater security for transferring your assets because it's more difficult to challenge the terms of a trust than the terms of a will. Still another advantage is that the terms of a trust are private, while those of a will are public.

## The Disadvantages

But there are also some disadvantages associated with a living trust. It can be more expensive than drafting a will; that is, legal fees can be higher than those required to execute a will.

During your lifetime, there are administrative activities associated with maintaining the

trust (such as filing tax returns and distributing income). Also, your income taxes may be higher in some situations when a trust is involved. For example, the trust has a smaller income tax exemption, and a trust cannot file a joint income tax return with your surviving spouse in the year of your death. If spouses are the trustees, there are no added tax complications.

## Living Trust Taxation

Many people think that because a trust avoids probate, it also avoids estate taxes. But only an irrevocable trust avoids estate taxes, and that's because its assets are treated as a transfer upon creation of the trust, often generating a gift tax.

True, a trust is not part of the estate that must be subject to the probate process, therefore probate costs are often lower—an incentive for many people—but the assets are still subject to estate taxation.

The exception is if you name

a charitable organization like ours as the beneficiary of the trust assets after your lifetime. Any property transferred to us is completely free of estate tax because it qualifies as a charitable contribution.

## Not a Substitute for a Will

A living trust is not always a good substitute for a will. First of all, a will does more than just transfer property. For example, parents with minor children need to make provisions in a will to designate a guardian. Also, it would be almost impossible for all assets of an estate to find their way into a living trust.

But a living trust can be the ideal way to transfer specific assets for people who would like to prevent their intentions from being contested and at the same time keep them from the public. These reasons—control and privacy—and not the size of their estates are why many people establish living trusts.

## Added use of a Charitable Remainder Trust

If you would like a charitable organization to receive the remainder of the assets after your beneficiary's lifetime, you can obtain valuable tax advantages by creating a charitable remainder trust (CRT).

When you establish a charitable remainder trust, the assets funding it will eventually pass to a charitable organization. But, your trust can direct that the income from the investment of those assets be paid out to you or someone else you designate, either for a period of years or for a lifetime, before the charitable organization actually receives the principal.

So, if you want to combine a charitable remainder trust with the trust for your dependent, you simply arrange for the income from the charitable remainder trust to be paid out to the dependent's trust instead of to you.

Among other advantages, creating a charitable remainder trust gives you an income tax deduction, which results in tax savings.



**CHRISTMAS SPIRIT** • The seventh annual Festival of Christmas celebration was held on December 3, 4 & 5, sponsored by the Division of Music of the Bernice Young Jones School of Fine Arts. The program included religious and secular Christmas musical favorites, intertwined with holiday theme interpretations through drama. The program included more than 250 students with performances by the Ouachita Concert Choir, Ouachita Singers, Ouachita Sounds, Ouachita Praise Singers, Ouachita Handbell Ringers, Ouachita Drama Team, the Ouachita Wind Ensemble.

# Have you heard of the Durable Power of Attorney?

If you think it has something to do with giving someone else permission to handle your affairs in case something happens to you, you're right.

A durable power of attorney is a legal capability granted by one person (the principal) to another to watch over the principal's affairs. The idea is that because the principal's interests will need continued stewardship in the event of mental incompetence, another person, known to and trusted by the principal, should be given the power to ensure this.

## The "Durable" Part

The power is durable, or lasting: it exists because another person is unable to make decisions for himself or herself.

Sometimes a durable power of attorney becomes effective only when the person becomes incapacitated, although this is not recommended. The criteria

**An estate plan includes many components for ensuring that the people and charitable organizations you care about most are provided for no matter what happens to you.**

of incompetence would have to be specified, and the person to make that decision would need to be identified. This can lead to obvious problems.

## The "Attorney" Part

The person given power of attorney is not required to be an actual attorney, but should be someone who is able to make important decisions on behalf of another.

State law needs to be checked before the status of durable power of attorney is conferred, because only about two-thirds of the states permit such

powers. Some states, for example, provide that only a family member can act as an attorney-in-fact with durable powers.

In a very real sense, the person who has a durable power of attorney must think and act as if he or she were actually the other person; he or she makes decisions on behalf of that other person, and the responsibility can be enormous.

## The Responsibilities

A person with any power of attorney—durable or not—can have powers that are either gen-

eral or limited. A person whose role will materialize when a principal is either incompetent or dying should be granted general powers, because many estate planning and asset distribution decisions need to be made, several of which may be unforeseen.

Limited powers must be specified, and anything not specified will not be allowed. The document granting power-of-attorney status should clearly describe all activities and transactions, including real estate transactions, bank withdrawals, charitable gifts, and several others.

## Learn More

If you are thinking about giving someone a durable power of attorney, or if you have been asked to assume one, get more information from an attorney who specializes in estate planning matters.

# Trusts to benefit those with special needs

Ensuring the financial stability of your loved ones after your death always takes careful planning. But if you are concerned about the future of a person with special needs--someone who perhaps cannot handle financial matters alone--you face special planning challenges that are a bit more complex.

If your goal is to enable a dependent you now support to maintain the same standard of living even after you are gone, the best way to accomplish that objective is by establishing a trust for that person.

The terms of a trust can provide for the prudent management of your assets so that the income

from their investment can be used to keep your dependent financially secure for life.

## Choice of a Trustee

One of your first decisions is whom to appoint as trustee. As for any trust, the administrator should be knowledgeable about investments, familiar with taxes, and good at record keeping.

You may be inclined to name a family member or friend so that you can be assured that your dependent beneficiary has someone who is personally involved in his or her life, not just a financial manager.

One thing to keep in mind is that you probably will want to provide for the person with special needs for his or her entire lifetime, which may extend well beyond the lifetime of an individual trustee. Therefore, you may find it preferable to appoint a professional in the area of financial and estate planning (perhaps an independent party like a corporate fiduciary, with experience and longevity) as your trustee or successor trustee.

You can have the advantages of both a personal touch and expert management if you appoint a family member or friend and a financial institution as co-trustees.

For more information about trusts you can establish during your lifetime, return the enclosed reply card for our free booklet,  
**The Living Trust: Is It for You?**

The information in this publication is not intended as legal advice. For legal advice, please consult an attorney.

# China EXPLORER

May 18-30, 1999

*Join us* on this captivating and memorable journey to one of the most fascinating and exotic destinations on earth. Together with your fellow OBU alumni and friends, we will explore this ancient yet ageless and timeless empire known as the cultural heart of Asia.

*Shanghai* - Be a Chinese "citizen" for a day, visit a farmers market and local home, see cooking demonstrations and sample their food. See the Children's Palace and the Shanghai Acrobatic Show.

*Beijing* - Explore the Summer Palace and the massive Forbidden City. Visit the Temple of Heaven, the Ming Tombs and the renowned Great Wall.

*Xian* - Visit the terra cotta warriors at the Qin Army Vault, Ban Po Village and the Big Wild Goose Pagoda.

*Guilin* - Enjoy a cruise on the Li River and visit the Reed Flute Cave.

*Hong Kong* - Ride up Victoria peak for a sweeping view of the city, bargain at Stanley Market. See Repulse Bay and the floating fishing village of Aberdeen.

For reservations and information contact:

Amy Runyan, Director of Travel Services  
OBU Box 3762, Arkadelphia, AR 71998  
870-245-5577, fax 870-245-5500  
email RunyanA@alpha.obu.edu

**OUACHITA**  
*Travel*

SPONSORED BY THE FORMER STUDENTS ASSOCIATION



## From the Archives



1982 • Blair Thomas, Kevin Carswell, Mark Rutherford, Mark Cushman and Brent Fields enjoy a little fun in the snow on a cold winter afternoon.

## Share The Best of Life!

TO: Director of Admissions Counseling  
Ouachita Baptist University

FROM: \_\_\_\_\_  
name

\_\_\_\_\_ address

Listed below are high school students  
who may be interested in Ouachita.  
Please contact them.

Name \_\_\_\_\_

Address \_\_\_\_\_

City \_\_\_\_\_

State \_\_\_\_\_ Zip \_\_\_\_\_

Phone \_\_\_\_\_ Grade \_\_\_\_\_

Name \_\_\_\_\_

Address \_\_\_\_\_

City \_\_\_\_\_

State \_\_\_\_\_ Zip \_\_\_\_\_

Phone \_\_\_\_\_ Grade \_\_\_\_\_

Name \_\_\_\_\_

Address \_\_\_\_\_

City \_\_\_\_\_

State \_\_\_\_\_ Zip \_\_\_\_\_

Phone \_\_\_\_\_ Grade \_\_\_\_\_

Return this form to:  
Director of Admissions Counseling  
Ouachita Baptist University  
410 Ouachita Street  
P.O. Box 3776  
Arkadelphia, AR 71998-0001

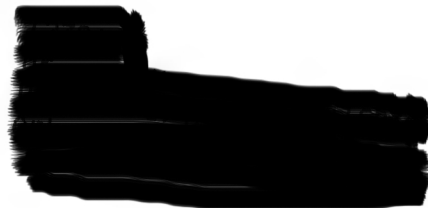
## We want you in Class Notes

Your former classmates and friends would like to know what you have been doing lately. How long has it been since you've updated them? Please send a note today to: Class Notes, Former Students Association, Ouachita Baptist University, 410 Ouachita Street, P.O. Box 3762, Arkadelphia, AR 71998-0001. Or send an E-Mail to: [alumni@alpha.obu.edu](mailto:alumni@alpha.obu.edu)

*The*  
**OUACHITA CIRCLE**  
The Alumni Magazine of Ouachita Baptist University  
Arkadelphia, AR Winter 1999

Ouachita Baptist University  
Arkadelphia, Arkansas 71998-0001

CHANGE SERVICE REQUESTED



Nonprofit Org.  
U.S. POSTAGE  
PAID  
Arkadelphia, AR  
71923  
Permit No. 34