

Ouachita Baptist University

## Scholarly Commons @ Ouachita

---

Arkansas Baptist Newsmagazine, 1975-1979

Arkansas Baptist Newsmagazine

---

2-16-1978

### February 16, 1978

Arkansas Baptist State Convention

Follow this and additional works at: [https://scholarlycommons.obu.edu/arn\\_75-79](https://scholarlycommons.obu.edu/arn_75-79)



Part of the [Christian Denominations and Sects Commons](#), [Mass Communication Commons](#), and the [Organizational Communication Commons](#)

---

#### Recommended Citation

Arkansas Baptist State Convention, "February 16, 1978" (1978). *Arkansas Baptist Newsmagazine, 1975-1979*. 63.

[https://scholarlycommons.obu.edu/arn\\_75-79/63](https://scholarlycommons.obu.edu/arn_75-79/63)

This Book is brought to you for free and open access by the Arkansas Baptist Newsmagazine at Scholarly Commons @ Ouachita. It has been accepted for inclusion in Arkansas Baptist Newsmagazine, 1975-1979 by an authorized administrator of Scholarly Commons @ Ouachita. For more information, please contact [mortensona@obu.edu](mailto:mortensona@obu.edu).

February 16, 1978

# Arkansas Baptist

NEWSMAGAZINE

HOTEL  
SAM PECK

More winter  
for weary Arkansans  
page 2





## I must say it

Charles H. Ashcraft / Executive Secretary

### Criminal negligence

Nothing in the Arkansas Baptist State Convention comes as close to criminal negligence as the lack of an "Information Services" ministry to assist God's special servants to find God's will and God's place of service for them. Millions are spent to prepare these select people for the unordinary services they perform, but little or nothing in the way of personnel services are furnished. Chaplains returning from active duty, seminary graduates, and those beyond the age of 55 often wait endlessly to receive any inquiry, invitation, or interest in their ministry. Most all of the older established conventions provide such a ministry and have found it to be the answer for this strange discrepancy in our denominational structure.

All our seminaries are bursting out all over with graduates this spring and all of you shout "hallelujah", but many of these bright products of our churches will take up residence with their parents and after many fruitless months of waiting, will take a secular job, being listed falsely as a dropout, to earn a crust of bread for their families during the long wait. Chaplains returning from military service, weary of months overseas and in difficult posts must often begin over again as an apprentice clergyman hoping someone somewhere remembers them from earlier days. Across Arkansas there are hundreds of pastors beyond the age of 55, the most productive age in most pastors, who would welcome a communication from a pulpit committee, but now are considered a bit too old for the up and coming church looking for a younger man who has 30 years experience, of course.

Compound this with the beautiful young women now graduating with specialized training each semester and you have an array of financial and soul outlay investment in the multi-millions with no one in charge to assist in getting these workers and churches together. Many of these highly trained people will be picked off by other fellowships who will pay twice our pay scale to get them.

A student welder at a vo-tech school has more promise of employment upon completion of a six weeks welding course than a dedicated servant of God completing seven years of theological training. It would cost the Baptists of Arkansas less than five cents each per year to provide this crucially needed ministry. It would be worth that nickel to the sincere pulpit committees who are seeking God's man for their church.

If we cannot be a leader among the conventions, certainly we could be a good follower and profit by the progressiveness of the leading conventions. If we can't be first we should not be ashamed to be second or last, if it means doing what is right by the people who are indispensable to our success as churches, convention and denomination.

*I must say it!*

## In this issue

### More winter



Arkansans are waiting for more seasonal weather, but the view down West Capitol Avenue in Little Rock one day last week didn't exactly foretell daffodils and apple blossoms. (ABN photo)

### Missions firsthand 6

A Jacksonville pastor tells about his "living mission experience" of evangelism and construction work.

### Prayer needed 24

Southern Baptists' prayers are needed behind the Bold Mission Thrust. An article lists a few of the prayer requests of mission leaders.

# Arkansas Baptist

NEWMAGAZINE

VOLUME 77

NUMBER 7

J. EVERETT SNEED, Ph.D. .... Editor  
BETTY KENNEDY ..... Managing Editor  
ERWIN L. McDONALD, Litt. D. .... Editor Emeritus

Post office box 552, 525 West Capitol Avenue, Little Rock, Arkansas 72203. Published weekly except at July 4 and December 25. Second class postage paid at Little Rock, Arkansas.

Letters to the editor expressing opinions are invited. Letters should be typed double-space and must be signed. Letters must not contain more than 350 words and must not defame the character of persons.

Photos submitted for publication will be returned only when accompanied by a stamped, self-addressed envelope. Only black and white photos can be used.

Deaths of members of Arkansas churches will be reported in brief form when information is received not later than 14 days after the date of death.

Original poetry cannot be considered for publication.

Subscriptions: individual \$3.25 per year. Every Resident Family plan 19 cents per month or \$2.28 per year per church family. Club plan (10 or more paid annually in advance) \$2.88 per year. Subscriptions to foreign address \$6 per year. Copies by mail 25 cents each.

Advertising rates on request.

Opinions expressed in signed articles are those of the writer. Member of Southern Baptist Press Association.



## Evangelism: our imperative

## The editor's page

J. Everett Sneed



In 1977, baptisms among Southern Baptists were the lowest in over 20 years. There are probably many reasons, but more important will be our reaction. God expects us to place the souls of people first and, by his help, to make 1978 a year in which record numbers of people will experience the miracle of the new birth.

Many reasons have already been suggested for our baptismal low. Some believe that many of our easier prospects have already been won. But evangelism brought large numbers of children under the preaching of the gospel. Many of these tender-hearted children have already been reached for the Lord. Further more, the population growth has declined in recent years; so it is thought that this limits the number of unreached children now available for evangelism.

Others suggest that the affluence of our people has turned their thoughts away from the things of God. They point out that people have a tendency to rely on material possessions rather than God in times of abundance. The rich farmer in Luke 12:18-19, for example, said "This will I do: I will pull down my barns, and build greater; and there will I bestow all my fruits and my goods. And I will say . . . take thine ease, eat, drink and be merry."

Undoubtedly, these and other outside factors have affected baptisms. But, by far, the greatest reason is our own misplaced priorities. Unless a church places reaching the lost above all other considerations, a congregation is not likely to see large numbers of people experiencing a personal encounter with Christ.

There are several wrong ways that we might react

to last year's number of baptisms: (1) We might deceive ourselves into believing that people are just harder to reach today; (2) We might console ourselves that since we are doing better than any other major denomination, we ought to be elated; or (3) We might expend all our energy analyzing our low baptismal record and never get down to the task of presenting the gospel.

It is true that some people are difficult to reach with the message of God's saving grace, but that is nothing new. Some sinners outside of Christ have always resisted. God's power is the same today as it has always been. The fact that some churches are experiencing record numbers of baptisms proves this truth from a practical standpoint.

If a church is reaching large numbers of people, the members must be motivated to communicate Christ's saving grace. The Bible provides three realities which should move all of us to witness to others. First, the scripture declares that people outside of Christ are lost. No one will have much concern until he believes that the unsaved are eternally separated from God.

Second, we must see that the scripture commands Christians to witness. The Great Commission and many other scriptures make our responsibility clear.

Finally, Christians must recognize that our chief purpose is to glorify God. When we serve as an instrument to bring another to Christ, we bring glory to our God.

As we commit ourselves to the major priority of reaching people, we can and will baptize many. May we allow our Master to motivate us to set reaching the lost as our number one concern.

## Guest editorial

### Time for a new start

It's 1978! A new year!

Many books have been closed on the year that is past. How would you like to close the book on last year's mistakes? In some ways you can.

Before closing the books a person should recognize the debits and credits. What did we do in 1977 that was wrong? Why did we do it? Have we taken the appropriate steps to correct it? It is not proper to close the books until the errors have been faced and correction made. Think what chaos there would be if banks were as careless with their accounting as some people are with their life accounts.

How did 1977 go from the standpoint of achievements? You are not ready to close the books on the year until you have reviewed the good things that came to you and also the good that you did. Don't discount the good you did and don't ignore it. Why did you do it? What are your plans for further good work?

Motivation continues to be one of our greatest problems. The way that a person thinks of himself is one of the major elements in his motivation. For instance, there are people who think of themselves as failures and every way they turn they fulfill the concept they have of themselves. They become great successes at failing. They can fail without

even trying.

The Bible refers to the force of one's thoughts. As a person thinks in his heart, so is he (Prov. 23:7).

Do you want to make 1978 a good year? Then carefully examine your own ideas. What is your idea of God? What do you think of people? And what concept do you have of yourself?

Major on any one of these three ideas, or all of them, and 1978 will be affected by your thoughts.

For instance, concentrate on your own self-concept. If a stranger were to ask you who you are or what you do, how would you answer him? Have you trusted Jesus Christ as your Lord? If so, do you think of yourself as a child of God. John 1:12 says, "Some did receive him and believe in him; so he gave them the right to become God's children." Do you continually have it in your mind that you belong to God as his child? Do you live with an awareness of a close relationship to him? Do you ask him things? Do you know what he wants you to do? Then do you do that?

When you close books at the end of the year, you then open new books for the new year. In those new books a person records the transactions as they occur. What transactions will we record in 1978's books? — **California Southern Baptist**



## 'Thy will be done'

by Jon M. Stubblefield  
(seventh in a series)

George W. Truett once said, "To know the will of God is the greatest knowledge; to find the will of God is the greatest discovery; to do the will of God is the greatest achievement." Significantly, the third petition of the Lord's Prayer urges us to pray, "Thy will be done, on earth as it is in heaven" (Matthew 6:10). This petition is an explication of the preceding one, "Thy kingdom come." The kingdom of God becomes a reality when his perfect will is done in the lives of men.



Dr. Stubblefield

This petition is a call for radical obedience. It is not so much concerned with willing what God wills as with doing what God wills. Most of us have little trouble with orthodoxy (right belief). However, we may stumble when it comes to orthopraxy (right action). It is always easier to talk about God's will than to do it. Jesus reminds us, however, that "not every one who says to me, 'Lord, Lord,' shall enter the kingdom of heaven, but he who does the will of my Father who is in heaven" (Matt. 7:21, RSV).

A first century rabbinic saying attributed to Gamaliel captures the idea of this petition, "Make God's will as thy will that he may make thy will as his will." From the Gospels we learn that Jesus' supreme desire was to do his Father's

will. He said, "I seek not my own will but the will of him who sent me" (John 5:30, RSV). Moreover, in the Garden of Gethsemane Jesus prayed, "My Father, if it be possible, let this cup pass from me; nevertheless, not as I will, but as thou wilt" (Matt. 26:39, RSV). Jesus did not want to taste the "cup." Clearly, the Gethsemane experience has little meaning unless we recognize that Jesus was tempted to turn from the course which lay before him! But when it became evident that he must face the cross, he declared without hesitation, "Rise, let us be going; see my betrayer is at hand" (Mark 14:42, RSV). Judas could pray, "My will be done." Jesus always prayed, "Thy will be done." He is our example.

To pray, "Thy will be done," means that we are ready to offer our lives in complete surrender to the Lord. Paul challenges us to present our bodies as "a living sacrifice" to God, which is what God really expects from us. We are not to let the world determine our agenda. Rather, we should allow God to transform (remold) us by the "renewal" of our minds. In so doing, God's "good and acceptable and perfect" will is demonstrated in our lives (Rom. 12:1-2).

Somewhere I read about a young woman who taped a card to her dresser mirror with these two words on it, "I'm third." When asked for an explanation, she replied, "God is first; others are second, I'm third." This is the spirit of the third petition.

**Dr. Stubblefield is pastor of Central Church, Magnolia.**



### One layman's opinion

Daniel R. Grant / President, OBU

### Making students safe for ideas

One of the most difficult jobs the president of a Christian college has is explaining to parents why their son or daughter needs to study controversial and even dangerous ideas. It seems a contradiction in terms for students on a Christian college campus to study unchristian ideas. Occasionally I talk with a parent who believes that the major difference between the secular college and the Christian college is that students at the Christian college do not read, hear, or discuss any ideas that are in conflict with the Christian faith and life. This is not only a misunderstanding of what the Christian college is all about, but it represents a misunderstanding of what a college education is all about.

Strong Christian colleges are needed today more than ever before because young people are being bombarded daily with a bewildering array of tempting ideas and siren songs, and many of the protecting restraints of society have been broken down. But the Christian college will have failed if it only makes ideas safe for students; it must make the students safe for dangerous ideas.

The college is by definition a place for examining all kinds of ideas — good and

bad, new and old, popular and unpopular, safe and dangerous. The chemistry department in a Christian college must examine the same poisonous substances in its laboratories and classes as would be examined in the study of chemistry at a state university. The frightening thing about higher education today is the epidemic proportion of dangerous ideas in the fields of morality, religion, economics, and politics (for example: marriage is out-of-date, the institutional church is irrelevant, socialism is a better way, and the government owes everyone a living).

The worst thing a Christian college could do would be to try to eliminate all dangerous ideas from the classroom and campus. The ultimate purpose of the Christian college is to help each student learn to face every new idea and weigh it carefully and critically for both the good and the bad it may have, measured in the final analysis against the truth of God in Christ.

All colleges seek to make students safe for ideas, but their definition of "safe" is not necessarily measured by Christian standards. Only the Christian college is committed to studying ideas — whether dangerous or safe — in a Christian context.

### Southern Board elects president

Ronald Kincade, attorney at law in Mountain Home, has been elected President of the Board of Trustees for Southern Baptist College, Walnut Ridge. Kincade graduated from Southern in 1968. While a student he was president of the Student Government Association.

He was selected by the Arkansas Baptist State Convention to serve on the Board of Trustees, and the Board in turn elected him President. The Board is made up of 24 men and women from many walks of life throughout the state. In addition to these members there are three advisory board members from Missouri and eight honorary members.



# Letter to the editor

## Miracles needed

Thanks for "Volunteers For Foreign Missions" (Jan. 5th issue). This was a splendid recap for your many news articles since Convention days on Bold Missions. It does sound like there are a few around who still believe in miracles.

My feelings, here, are that Southern Baptists will need just that — lots of miracles. And not just for '78, '82 or target year 2000, but all in between. I, also, feel that we should be careful with dates not to timetable God. Goals are good, but maybe for Him, we should ask that it be soon as we call "soon" — like 2000.

Most certainly, these goals call for sweat, perhaps tears, and, of course, prayer. Collective endeavor, to me, means silent and concerted appeal where and whenever mission-minded Baptists gather; and, as a model, Matt. 18:19-20 can't be beat. A minute or more set aside specifically for prayer should fit in anyone's program; and not as a one time thing, but always — lest we forget.

The Matthew verses are on a channel that brings in God as no others do, for me, and for that reason are just right for us rank and filers. They are so, so factual. Faith isn't even mentioned, but it's there all the way — understood, vital, beautiful. In my thinking, this Scripture constitutes the most loving, liberal, and unconditional promise our Lord ever made for answered prayer. Miracles ply this route. — L. Driscoll, Aransas Pass, Tex.

## OBU honors Miss Frances

Ouachita University recently honored Miss Frances Crawford of Arkadelphia by the unveiling of a color portrait commissioned by the University. The photograph is on display in the lobby of J. E. Grant Administration Building at OBU. Miss Frances, as she is affectionately known, served for more than 50 years as secretary to the president, registrar and alumni-placement secretary. She still works as a volunteer in the Ouachita Former Students Association office. The University also recognized her in November at an appreciation dinner during the Arkansas Baptist State Convention in Little Rock. Flanking Miss Frances are photographer Jim Veneman (l) of Hot Springs, co-owner of Southern Photographic, Inc., who took the portrait, and Ouachita President Daniel R. Grant.



## Woman's viewpoint

Ruth Ann Wade

## Let the little children come

Jesus wanted the children to be with him. While around him they would learn what he was like, what he thought and things he wanted to tell them.

In much the same way we need to let the children come to us. While they are small, instead of always sending them out to play, or to watch TV, or even to someone else's house, we need to spend some time with them. Somewhere I've heard that more is caught than is taught. Phrased another way it might be: actions speak louder than words.

In other words, our children need to see a daily Christian example. They need to see their parents, grandparents, or Sunday School teachers kneel in prayer. Perhaps one of those prayers they should hear at a very early age should be for them and the future mate God may be preparing for them. They need to see our daily dependence on God for all our guidance.

A child should hear an adult ask for forgiveness, of our Heavenly Father and of the earthly one who was wronged.

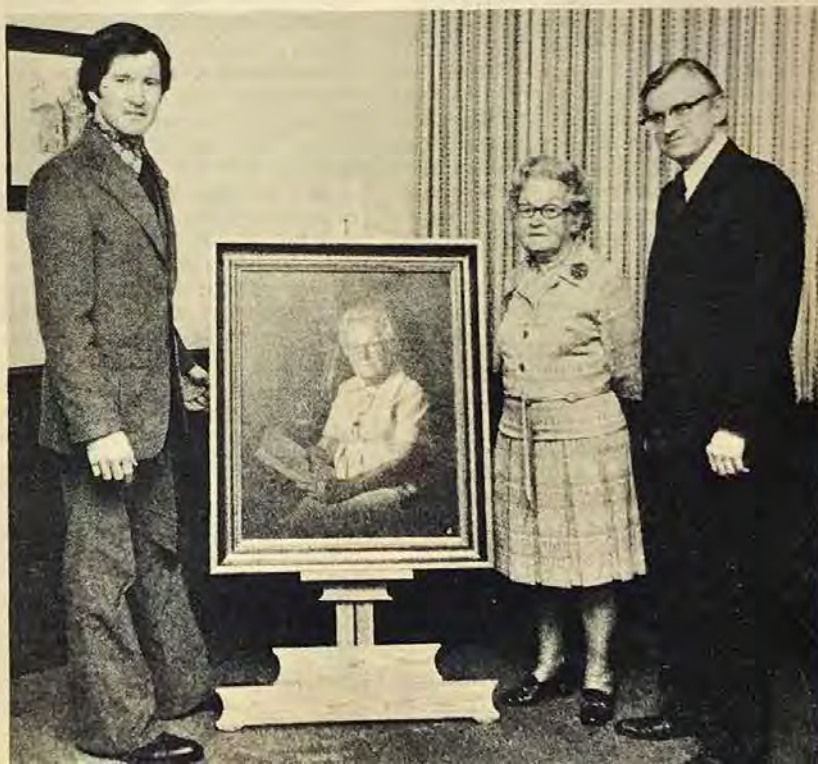
Sometimes they get the idea that we think we are perfect and have no need to ask forgiveness of anyone.

Let them see us be fair in all our dealings, not only with grownups, but with them as well. (I found a timer was an invaluable aid to make sure that each child got fair treatment. They could see for themselves that everyone got an equally long ride or turn with the toy or game, because they saw where the timer was being set.)

It will not hurt for a child to see you cry, even if you are a male. Jesus wept. They weep. It can be a good time for shared understanding, if we do not hide it.

Make some Christian memories that cannot be taken away even if you are. My father went to be with the Lord when I was five years old, but one of my most precious memories is of me sitting in my father's lap with the family Bible on our laps while he read and then led in our family devotionals.

What will you be remembered for?





# Arkansas all over

**E. Elmer Griever Jr.** was honored Feb. 5 by First Church Berryville for his 10 years of service as the church's pastor. The church had a surprise guest speaker for the morning service, and had members of other churches



Griever



Hook



Keith

Griever had served to give testimonials in an afternoon service. Several relatives, including Griever's mother, were present at the testimony service. Griever, an Arkadelphia native, is a graduate of Ouachita University and Southwestern Seminary. He also has served churches at Harrison and Cassville, Mo. Since Griever came to serve the Berryville church, they have had 235 new members, have paid off an education wing to their building, and made several equipment additions and improvements to the auditorium. Griever has served on the state convention executive Board, has held posts in local associations, has been president of the Rotary Club, and currently serves on the board of the local chamber of commerce. During

Griever's 10 years as pastor, the church has broadcast their Sunday morning service live on local radio.

**Don Hook**, who had been pastoring Crystal Hill Church, Little Rock, for the past seven years, has retired from the active pastorate and the church honored him and Mrs. Hook with a reception on Jan. 22. They also presented him with a month's salary. Mementoes from his ministry were on display at the reception. Hook, who has served as president of the Arkansas Baptist State Convention, has been a member of the state convention executive board and held other convention offices as well as serving on state boards. He pastored First Church, Ozark; First Church, Paris; First Church, Malvern; and Baptist Taber-

nacle, Little Rock, prior to becoming pastor of the Crystal Hill Church. He attended Jonesboro Baptist College and is a graduate of Ouachita University.

**Dale Keith**, a Boyce Bible School student, has been called as pastor of Mount Vernon Church, Benton. He was ordained to the gospel ministry in services held at East End Church on Jan. 29.

**Calvin R. Hall** was licensed to preach by Calvary Church, Blytheville, recently. Joe A. Thompson, pastor, was in charge of the service. Hall, who has been serving with the United States Air Force, stationed at Blytheville Air Force Base, retired following 20 years service and is now doing undergraduate studies at Park College. A native of Hallwood, Va., he is majoring in psychology. While serving with the Air Force he received training as a counselor working with the drug/alcohol rehabilitation program.

**Jack Bachelor** of Camden has accepted the call to serve as music and youth director for Victory Church on Hinson Road, El Dorado. He is a sophomore at Ouachita University. Bachelor, an ordained minister, is an assistant to evangelist Paul Jackson.

**Thomas A. Hinson**, pastor of West Memphis First Church, and C. L. Griffin

## Follow-up

### 'My living mission experience'

by **Mason Bondurant**

It all began when a father and mother, Mr. and Mrs. C. H. Maulden, visited their daughter, Aleta Blackmon, wife of Dennis Blackmon, missionary in Florianopolis, Brazil, on their field of service. When the Mauldens returned home they asked me, their pastor, if I would be interested in a preaching mission to Brazil? Would a hound dog like to hunt? That answered the question. This was December, 1976.

In addition to the preaching mission we decided to organize a construction team of men who at their own expense would go to the bush country west of Florianopolis to build chapels and Sunday school rooms. An article was placed in the *Arkansas Baptist Newsmagazine* calling for volunteers willing to do this. There were four immediate responses with two placed on a waiting list, in case someone failed to go. The men who went were Lynn Sellers of Arkadelphia, Harold Fisher and Herbert Newcom of Jonesboro,

and Ronald Welch of Shreveport, La. These men and I did make the trip to Brazil this past January, 1978.

On one occasion there may have been a first. They built a chapel in one day and the same night the people had a dedication service with 110 people present. The men gave their testimonies through interpreters. They are still talking about that experience. Due to illness I had to cut my part short, but not before going back into the bush country on a small plane to Chapeco where I had the opportunity to preach to a packed house. That night five adults made professions of faith.

The demand was great in the detailed planning and arrangements of such a trip, but already the same men talk of wanting to return. Brazil is a beautiful, fascinating country. The opportunity of an open door for preaching the gospel is there now, and "Bold Missions" needs to become more than just a slogan. I

also have great desire to return to preach through interpreters his message. The people where we were rarely see anyone from the states so the curiosity factor entered in to facilitate preaching in this way.

My church graciously paid my way and allowed my absence. That also is "Bold Missions". It is my desire to go back to the same area in December of 1979. I will especially need a bricklayer who would go at his own expense, and invite inquiries. It is also my hope to take a medical team this time. There are possibilities already for this type of approach, but this demands much advance planning. Again, medical personnel would also have to go at their own expense. They would work there with Brazilian medical personnel due to legal requirements. Truly such an experience makes missions come alive.

**Mason Bondurant is pastor of First Church, Jacksonville.**



and Eddie Brawley, members of the church, are on a mission trip to India with their main preaching mission to be in Kottarakara.

**Larry J. Rhodes**, who has been serving as minister of music and education at Magnolia Church, Crossett, has resigned. He has accepted a similar position with the Covington Pike Church in Memphis.

**Walter E. Yarbrough** became pastor of First Church, Desha, Independent Association Feb. 5. Yarbrough, who has been pastoring Webb City Church, Ozark, in Clear Creek Association, has served as director of the Clear Creek Brotherhood and a member of the missions committee. He helped plan the Baptist Vista Encampment each year; served on the encampment staff, and directed the Royal Ambassadors camp. During his pastorate at the Webb City Church there were 30 additions with 11 of these coming on profession of faith.

**W. M. (Bill) Thomas** is now serving as pastor of Pleasant Ridge Church in Black River Association. Thomas was instrumental in re-organizing this church in 1976 and continues to drive approximately 65 miles each week for services. A native of Bono, he is a farmer and has pastored churches in Greene, Craighead, and Lawrence Counties.

**Cherry Sue Buchanan** has been chosen Young Person of the Month at Wakefield First Church, Little Rock.

**Bill H. Lewis**, pastor of North Main Church, Jonesboro, has been accepted for work toward the doctorate of ministries degree by Luther Rice Seminary, Jacksonville, Fla. He will major in evangelism and will receive his degree in late 1979.

**Chris Tompkins** and **Charles Standefer**, members of Osceola First Church, have returned from a mission trip to Mexico. The two men, who were in Mexico last year assisting with the organization of a mission, were asked to return this year to participate in the chartering of the mission as a church.

## Correction

In the Jan. 26 issue of the *News-magazine*, an item under "Arkansas all over... people" incorrectly identified the pastor of Lone Rock Church, Norfolk, in White River Association. Bob Mathis actually is pastor of Lone Rock Church. Joe Hudson serves as pastor of Big Flat Mission of Mtn. Home First Church.

The Woman's Missionary Union of **North Pulaski Association** in observance of WMU Focus Week held a study today of the Home Mission book "The Leaven and the Salt." Mrs. Alice Polos, Mrs. Louise Melton and Mrs. Janice Kerr, associational WMU leaders, taught the book.

**First Church, Crossett**, held deacon ordination services on Feb. 5 to ordain Charles Baxley, Joe Cantley, Tommy Hooks, Jimmy Lewis and Claude Spainhour.

**Pulaski Heights Church, Little Rock**, as part of Bold Mission events, began a special mission education event on Sunday evening, Feb. 12. Lehman Webb, Field Missionary in Church Extension for Arkansas Baptist State Convention and a former Southern Baptist Missionary to Singapore, led the first of the events to be held quarterly.

**Lakeshore Heights Church, Hot Springs**, recently presented Jeanna Sue King, daughter of their pastor, R. B. King, and Mrs. King, with a red rose and a gift of \$100 to be used for a trip to Washington, D.C. Feb. 4-11. Presentation was by Jim Alford, minister of music. There she will represent Hot Springs High School in the Presidential Classroom. She has also been named to the Society of Distinguished American High School Students. Miss King is a senior with a 4.0 average and plans to attend Ouachita University.

**Beech Street Church, Texarkana**, observed Celebration Sunday on Feb. 12. Malvie Lee Giles of Magnolia, a gospel singer, was special guest. She presented special music for the morning worship service and a gospel concert in the evening service.

**Calvary Church, Paragould**, held a January Bible study revival Jan. 23-29 with Paul Ragland as leader. There were 103 receiving study course credit with an average attendance of 137.

**First Church, Arkadelphia**, through its deacon ministry has begun a care ministry to college students with a student deacon associate program. This ministry will parallel the deacon care plan. College students, Ron Bohannon, and Paul Blalock, are serving this month to assist students with ministries that include helping in time of crisis, visitation, assisting the deacons of the month, and enlisting students to participate in a luncheon on Feb. 12.

**First Church, Heber Springs**, is re-organizing its Deacon Family Ministry Plan. Each deacon has assumed responsibility for 10-12 families to visit in times of crisis and for periodical visitation.

The men of **First Church, Fouke**, observed Baptist Men's Day on Jan. 27. Men of the church taught all classes on that date. Jerry Page, lay speaker and Sunday School Director, brought the morning message. T. L. Attaway, Church Training director, was evening speaker. J. Longino directed the all men's choir. "Witnessing for Jesus," was theme for the day. George Fletcher is pastor.

Youth of **Clear Creek Association** met at First Church, Alma, on Monday evening, Feb. 6. Those on the program were William C. Spears, associational Church Training director; Mike Scott and Reggie Freeman, University of Arkansas football team members; and Delbert "Skip" Kelley, associate pastor, Oak Grove Church. Paul Stockemer is pastor of the host church. Paul Wilhelm is associational Director of Missions.

**Lakeshore Drive Church, Little Rock**, ordained Philip Bonner and Jerry Jeakle as deacons in services Jan. 29.

**Martindale Church, Little Rock**, is entering a pilot program of Church Training TRACTION which will be organized by the Southern Baptist Church Training Department of Nashville.

**Cullendale First Church, Camden**, will be in revival April 2-7. J. O. Morman of Lindale, Tex., will be evangelist. Jimmy Burks is pastor.

**First Church, Camden**, held services on Feb. 5 to ordain Wilbur Crain as a deacon.

Youth of **Independence Association** held a rally at Rehobeth Church, Moorefield, on Feb. 4 and a evangelism meeting at Eastside Church, Cave City, on Feb. 7. Donna Abel was special guest for the rally and Neal Guthrie, associate in the Arkansas Baptist State Convention Evangelism Department, was guest at the evangelism meeting. An associational stewardship clinic will be held at Calvary Church, Batesville, on Feb. 21. Lehman Webb, Field Missionary in Church Extension for the Arkansas Baptist State Convention, will be speaker. Warren Miller will lead singing. The associational evangelism meeting will be held at First Church, Mountain View, on Feb. 23. Speakers will be Joe Chumley and Thurlo Lee.

**First Church, Marshall**, will begin a revival on March 13. Evangelist Billy Walker will do the preaching.

**Portland Church, Delta Association**, will be in revival March 5-12. The evangelist will be Roy Parker of First Church, Baytown, Tex. Mack Ball, Eudora, will direct the music.



Many things in life I have had to experience through hearing others tell about it, but that which I share with you, I personally experienced. I was there. I was one of the 160 people that went to Seoul, Korea, Oct. 21, 1977, to work in Baptist churches.

The Korean Baptist Convention, working with our Southern Baptist missionaries extended an invitation to work in 28 Baptist churches in Korea. (Twenty-four in Seoul, four outside the city). We were to work on a church field for one week, visiting, teaching, and preaching in the revival in the church each evening. There were four of us in my team and we were assigned to the Young Kwang Baptist Church in Seoul. This is one of the 90 Baptist Churches in Seoul.

Originally my team had been assigned to a larger church, but a switch was made and we were to be in a church of only 32 members.

Their church plant was a one room building that will seat less than 100 people, but I soon discovered that my team was right where God wanted us to be. Even though, on Sunday morning, there were only 19 people in the service, besides our team and the pastor's family, I was to see the power of God. Five of those 19 had never made a profession of faith and they were saved that morning.

The afternoon we worked door to door in witnessing with bi-lingual tracts and an interpreter. We were divided in four teams.

That evening the services were attended by about 75 people and 23 made first-time professions of faith. Never before in any revival had I seen the resident membership almost double after the first day's revival service.

So many exciting things happened each day. My team was made up of Mr. and Mrs. Jerry Knapp and Steve Reed (a 17-year-old) all from the Paramount Church in Amarillo, Tex. Never have I been with anyone that worked as hard as this team worked.

On Tuesday evening we had six professions of faith, and one was a 74-year-old lady. I asked her why she waited this late in life to trust Jesus and she said through our interpreter, "You are the first person to ever tell me what I had to do to be saved". That does not happen every day to me in my ministry here in Arkansas where I serve God as a pastor.

The week moved on; we were exhausted working each day on a church field where there are over 300,000 people within a few miles of the church. Over 85 percent of this group have never trusted Jesus. When you look at

the population of the entire city of Seoul, you discover there are seven and one half million people. In all of South Korea, there are more than 35 million people.

God was so good to us. Not only had he blessed us each day in our witnessing and souls had been saved each night in the service, but there was another special blessing that he had for us in his work. We discovered that on Friday morning, we were to be at one of the schools as their guest. I was to be the evangelist for a one hour chapel service. My assigned text was, "How can a person be born again." We arrived at

*'I was there'* \_\_\_\_\_

## Arkansas pastor witnesses in Korea

by Henry Davenport



Henry Davenport is pastor of First Church, Norphlet.

the school, the chapel program had to be outside because of the number of girls in the junior and senior high school. My team shared their testimony, they sung specials, the school choir sung and I walked behind the platform to preach. Never had I stood before five thousand girls with the responsibility to preach and knowing that over one half of that group had never made a profession of faith.

At the close of the message, as careful

as I knew how, I asked only those who were willing to trust Jesus and become a part of his church and his kingdom to make a public profession of faith. The interpreter said 500 came making professions of faith. I knew that more than 300 made a public commitment of their life to Jesus. I will always remember the prayer of this group of young ladies as they prayed the sinner's prayer asking Jesus to forgive them of every sin.

As you can easily see, I could go on and on sharing with you experience after experience. The revival closed on Sunday evening. In the little church that my team has been working, there have been 72 professions of faith. The youngest was age 14, the oldest age 74. Also, there have been many professions of faith in the homes, in the schools, in the jails, and in the nursing homes. In the other 27 Baptist churches, they too had experienced revivals. Some have been in large churches, some in churches our size. In all, there have been 1,769 professions of faith in the 28 churches, plus over 4,000 recorded professions of faith outside the church.

In every way, it had been a great week. We had worked with some of our 79 Baptist Missionaries in South Korea. We had come to know and appreciate men like O. K. Bozeman, one of our Career missionaries that many of you read about in the book *Rivers of Ink*. Suddenly Lottie Moon Christmas Offering took on a new meaning. For now I know that as we reach our Southern Baptist goal of \$34,000,000, over \$372,000 will go directly to our work in South Korea. As we pray for missionaries, I see their faces. I remember their problems and I want to help.

So many have asked, are you going back to Korea another year? The Korean Baptist Convention has asked for 200 pastors and laymen to come to Korea in October, 1978. Jim Humphries, a former Southern Baptist missionary to Vietnam says that on Oct. 3-17, pastors and laymen will have an opportunity to be back in Korea. Even though I was the only Southern Baptist from Arkansas, I hope 1978 will be the year that more of us become involved in this ministry.





# The importance of Christian Rescue Missions

by Richard R. Nosek

Many Christian ministers have admitted, "The most underrated of all Christian Organizations are Christian Rescue Missions!" While some mission superintendents have said sadly, "Christian Rescue Missions are the last to be put on a church budget but the first to come off when church finances drop!"

In one city the leaders complained to their alderman when a Christian Rescue Mission was opened up. "This will downgrade our community!"

The alderman, a devout Christian replied, "I have seen derelicts having accepted Jesus Christ, then becoming an asset to the community instead of a liability!"

Parole officers are lavish in their praise of these missions. One parole officer said, "There are not enough halfway houses for released prisoners, but there are always missions nearby. I am acquainted with ex-convicts who have

accepted Jesus Christ in a mission. They are model citizens now!"

Not only alcoholics but drug addicts have come to missions for help. Those who have accepted Jesus Christ have changed their lives!

In the last few years mission superintendents have welcomed many women to their missions. These frustrated women have related their sad experiences. They lived with men without the benefit of a marriage license. They tell of the many methods men use into persuading women into this illicit relationship.

Doris believed Harry when he said he would marry her after they had saved a certain amount of money. They lived together for five years. One day when she came home from the office, there was a note on the table.

"Dear Doris:

I met a girl I love deeply. She said if I didn't marry her, she would not see me

anymore. I am going to marry her.

Sorry,  
Harry."

Doris not only lost Harry but he took the money they had saved. Her friends urged her to take him to court and recover some of the money. Doris refused. She did not want the world to know what a fool she had been!

Some time later Doris went to live with John. After John came David and Charles. Facing middle-age some years later, Doris met women her age who were married and had grown children. All she had left were bitter memories!

But Doris's life was not over. She went to a Christian Rescue Mission. She said she considered this her last hope! There she accepted Jesus Christ as her personal Saviour. She remained there to counsel with women. All the while she prayed she could reach women before they made the same mistake she had. One night at prayer a thought came to her. She knew it was from the Lord! Doris had her testimony printed on a tract which she distributed to girls and women at high schools and colleges! Only in eternity will Doris learn how many of these girls and women benefited from her experiences!



## Presidential paper-work

Paul McClung (right), president of the Southern Seminary alumni association of Arkansas, looks over the computer print-out's statistics of the Louisville, Ky. school's record student enrollment. With McClung are national alumni president W. C. Fields of Nashville, Tenn. (left), and Duke K. McCall, seminary president. McClung, pastor of the First Church, Mansfield, was in Louisville recently attending the national alumni presidents' meeting and workshop.

# Share!

IN BOLD MISSION THRUST

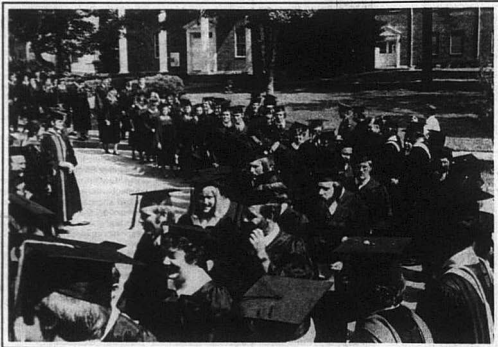


OFFERED BY ANNIE ARMSTRONG  
EASTER OFFERING

**BOLD GOAL**  
**\$13,000,000**



# Thank you, Arkansas Baptists...



## Christian values do make a difference!

Ouachita Baptist University Salutes  
Christian Higher Education Day  
Sunday, February 19, 1978



# Your state convention at work

## Arkansas men needed for Brazil evangelism

The SBC Foreign Mission Board is requesting 24 men from Arkansas who are interested in personal witnessing and soul winning to participate in an evangelistic effort in Brazil March 19-April 2. These men will be asked to pay their own travel and living expenses, which will be approximately \$1,200.

More information is available from the Brotherhood Department, Arkansas Baptist State Convention, P.O. Box 552, Little Rock 72203, phone 376-4791.

## Looking ahead: Arkansas events

### February 1978

- 17 GA Day Camp Workshop, West Memphis, First  
18 GA Day Camp Workshop, Jonesboro, Central  
18 Youth choir festivals, Immanuel, Little Rock, and  
Little Rock, First  
19-22 Home Mission graded series study (WMU)  
23 GA Day Camp Workshop, Little Rock, First  
23-24 Ouachita Baptist University church music workshop  
24-25 Regional Library Clinic (Church Training)  
Little Rock, First  
28 GA Day Camp Workshop, Ft. Smith, Immanuel  
27-March 1 Pastors Planning & Leadership Seminar,  
DeGray Lodge (Church Training)

### March 1978

- 1-3 Directors of Missions Retreat  
3-4 Handbell Festival, Pine Bluff Convention Center  
5-12 Week of Prayer for Home Missions &  
Annie Armstrong Easter Offering  
6 Northwest District Bible Drills & Speakers'  
Tournament, Rogers, First  
7 West Central District Bible Drills & Speakers'  
Tournament, Paris, First  
9 North Central District Bible Drills & Speakers'  
Tournament, Melbourne, First  
10 Central District Bible Drills & Speakers'  
Tournament, Benton, First  
10-11 Baptist Men's Meeting, Little Rock  
12 Home Missions Day in Sunday School  
12-19 Youth Week  
13 Southwest District Bible Drills & Speakers'  
Tournament, Hope, First  
14 Southeast District Bible Drills & Speakers'  
Tournament, Warren, First  
16 Northeast District Bible Drills & Speakers'  
Tournament, Central, Jonesboro  
17 East Central District Bible Drills & Speakers'  
Tournament, Forrest City, First  
17-18 State Renewal Evangelism Workshop,  
DeGray Lodge  
17-18 Interpreters for the Deaf Workshop  
18 Associational Baptist Youth Night  
21-22 WMU Annual Meeting, Park Hill, North Little Rock  
24 Youth Convention, Robinson Auditorium, Little  
Rock (Church Training)  
27-30 Acteens Leaders Mission Tour  
27-31 Church Architecture Consultations (Sunday School)  
30-April 1 Marriage Enrichment Retreat (Church Training)

## Stewardship

## Need a fund raising campaign?

The Stewardship Commission of the Southern Baptist Convention sponsors "Together We Build" campaigns for Southern Baptist Churches. Several men work as consultants with the Commission as they assist churches in fund raising campaigns.

Consultants from the Commission work by invitation from the churches. They do not solicit business. It is difficult for the Stewardship Commission to meet all the requests that come from the churches.

The Commission's "Together We Build" consultants have the church's interest uppermost. They do not work on a commission basis.

Not all churches desire to use "Together We Build" consultants from the Stewardship Commission. It is in this area that the Stewardship Department of your State Convention can assist. Three men have been trained to lead "Building For Today's Challenge" fund raising campaigns.

"Building For Today's Challenge" is almost identical to the "Together We Build" program. The major difference is in the personnel. The "Together We Build" campaign is used by Stewardship Commission personnel all across the Southern Baptist Convention. A "Building For Today's Challenge" program is for use by the states that have trained personnel or for individual use by local churches.

Churches interested in using state trained consultants for "Building For Today's Challenge" campaign should consult the state Stewardship Secretary. All contacts may be initiated or channeled through the Stewardship Department.

Jack Riley, James Wilson, and Jerry Wilson are Arkansas' consultants. They are available to assist the churches in fund raising campaigns.

The three consultants will work under established guidelines. All three have led their churches through "Together We Build" programs and have received training from the Stewardship Commission on conducting "Building For Today's Challenge" campaigns.

Churches that have used "Together We Build" or "Building For Today's Challenge" are unanimous in their praise. Both represent the best that the Stewardship Commission has to offer to the churches. — James A. Walker, Secretary of Stewardship



Announcing the 1978 - - -

# State Youth Convention

"Youth Experiencing Discipleship"

## Speaker



Nelson Price  
Pastor  
Roswell St. Church  
Marietta, Ga.

## Program features

- Inspirational messages
- Multi-media presentation
- Music
- Fellowship
- Bible Drills and  
Speakers' Tournament

## Child Care Contributions set a record

The churches of the Arkansas Baptist State Convention set a new record in 1977 in direct contributions to the child care ministry. Gifts from the churches amounted to \$200,096.36. This is a 4.7 percent increase over 1976.

Keep in mind this is in addition to the Cooperative Program. It includes Thanksgiving Offering, Birthday Offerings, Mother's Day Offerings, budget and special needs. We are dependent upon this source of support for approximately one-third of our budget.

We are very appreciative of the support given to this ministry by Arkansas Baptists. Because of it, we have been able to meet the needs of children who depend upon us. To know we have provided for the physical, mental, social and spiritual needs of those in our care is indeed encouraging. Lives are being changed in so many ways. The fact that 22 of our children made professions of faith in Christ last year speaks of the great work of our dedicated staff. You are involved in this great mission outreach through your gifts. Thank you for caring and sharing. — Homer W. Shirley Jr., Director of Development, Arkansas Baptist Family and Child Care Services

See report on page 15

# WMU Annual Meeting

*Park Hill Baptist*

201 East C  
North Little Rock

**March 21-22, 1978**

**"God Has Done  
His Part"**

## Personalities:

Beverly Hammack, HMB, Atlanta  
Catherine Allen, WMU, SBC, Birmingham  
Mr. and Mrs. Glendon Grober, Brazil  
Dr. and Mrs. Claude Rhea, Birmingham

Banquet and Concert: March 20, 7 p.m.; featuring Claude Rhea  
Tickets available from State WMU Office; deadline March 13

Nursery for preschoolers

Motel reservations made direct: Holiday Inn, Ramada Inn North, Passport Inn, Days Inn (all North Little Rock)



## Sunday School Small church growth

There is no magic no-work formula which will produce growth in a church. There are some working elements and relationships which can produce growth. The accent is on work.

If growth occurs anywhere without work, I have never heard of it. I have seen a lot of hard work which was intended to produce numerical (and spiritual growth) but which resulted in no gains and in some instances losses have been recorded.

What is the dilemma? How can you know if you are working in the right way, or if the work is almost destined to fail?

Surely one essential element is pastoral leadership. Even in larger growing churches one can always see the pastor as the central figure in leadership. A pastor cannot, it seems, say to a Sunday School director or minister of education, "I'll preach, you make the Sunday School grow." Occasionally the pastor of a growing church may be less valuable outside his own congregation than other pastors, but within a growing congregation the pastor's leadership is highly visible. Most ministers of education and Sunday School directors highly prize their pastor's leadership in Sunday School growth. Without it, growth is nil.

In the small church Sunday School growth project *The People Reacher*, the pastor's role is highly visible in the local church. The project centers in a weekly workers' meeting for 13 weeks. In this meeting there are three leaders and four functions. First, the pastor leads a prayer period for Sunday School needs; second, the secretary brings a report of last Sunday's record; third, the director administers prospect visitation assignments; and four, the pastor conducts a teaching improvement period based on the Convention Uniform lesson, used by every member of the family, first grade and up.

This project gives the small church CLOUT; that is, strong growth. — Lawson Hatfield, state Sunday School director.



Hatfield



Vance Vernon (left), consultant with the Family Ministry Department of the Sunday School Board, and Gerald Jackson, associate in the state Church Training Department, examine materials for family enrichment projects. The materials were produced by the Family Ministries Department for use by churches in family enrichment projects. They were used in family ministry projects held recently in Arkansas, and they include age-graded books for the 1978 Christian Home Week (May 7-14); helps for family life conferences, parenting workshops, marriage enrichment projects; and activities for single adults and senior adults. Materials can be purchased from the Baptist Bookstores. Help in planning church and associational conferences is available from the Arkansas Church Training Department, P.O. Box 552, Little Rock 72203.

**Editor's note:** Recently, I had the opportunity to briefly examine the Family Ministry Workshop materials which our Southern Baptist Convention has produced. I was impressed with the quality and the scope of these materials. It is my personal hope that our churches and members will utilize these resources. The principles set forth in these materials should help greatly to alleviate many of the problems currently confronting our society. Our Church Training Department can assist in planning a variety of approaches in using these materials. — JES

## News about missionaries

Mr. and Mrs. Billy O. Gilmore, missionaries to Brazil, have completed furlough and returned to the field (address: Caixa 1635, 13100 Campinas, Sao

Paulo, Brazil). A Texan, he was born in Leverett's Chapel and also lived in Mount Enterprise. The former Lee Ann Cole, she was born in Alma, Ark., and

also lived in Texas while growing up. Before they were appointed by the Foreign Mission Board in 1962, he was pastor of First Church, Hawkins, Tex.



## Twenty miles from Camp David

Near Frederick, Md., Jan. 29, 1978 — Summit Lake Camp, Md., is nestled in the beautiful mountains and only 20 miles from Camp David. My Marine host, Captain David Carl, who serves as one of the social aides at the White House, told me this as we drove from Washington National Airport toward the BSU Retreat for students from the U.S. Naval Academy and Arundel Community College at Annapolis.

All week-end I wondered if another Baptist and his family were 20 miles away.

Dick Bumpass, Baptist Student Director at Annapolis, served as BSU Director at Arkansas State University for approximately eight years in the 60's and still has strong Arkansas ties. Lori, Tiffin, and Nick were with their dad at the retreat while Dixie stayed at Annapolis with their older son Kelly who is on a soccer team.

The theme of the retreat was "Prayer" and as we prayed and sang and worshipped in the remote retreat, I was grateful for godly parents and Baptist churches that had produced the fine Christians I met from Annapolis. There were midshipmen from 15 to 20 states among the 50 students at the retreat, but only one Arkansan, James Oldham, son of Mr. and Mrs. Orval Oldham of Jonesboro. Preparing to speak to this group was a "heavy" assignment.

The BSU position at Annapolis is one of three BSU service academy positions funded by the Home Mission Board. Baptists also have a BSU Director at West Point and the Air Force Academy.

Naval Academy alumni and interested individuals provided money for a recently opened BSU office in downtown Annapolis, only three blocks from the academy.

Ice skating, sledding, and skiing provided recreation for the students — so different from our Arkansas retreats. But the spirit of the students, the songs sung, and the prayers expressed were no different from those of our own students. BSU is BSU anywhere you go.

Sunday night I reflected on the retreat with two Arkansans, Wade and Jan Berryhill at Richmond, Va. Wade teaches law at the University of Richmond, and he and Jan have worked with BSU both at Arkansas State University and at North Arkansas Community College. Jan also served as secretary at the BSU center at Fayetteville while Wade was in law school there.

The late news at the Berryhills shattered my questioning of the proximity of our Baptist president. The television told of his teaching his Sunday School class at First Baptist Church in Washington that Sunday.

That's an even better place to be than Camp David! — Tom J. Logue

## Brotherhood Baptist Men share in missions

Baptist Men's Day for 1978 is now history. Reports received indicate that this year was one of the best for Baptist Men's Day activities, for more churches participated with more men involved.

Many of the churches followed the same format in programming for the day. A prayer breakfast started the day with a well-planned program and interest. Baptist Men had charge of the morning and evening worship service.

Men shared their testimonies with the church and also gave their experiences in mission activities. Projections and ideas for involvement in Bold Missions for the church and community were shared.

More men were challenged to become involved in more mission projects of out-reach and sharing.

As more reports arrive we hope to share more results of Baptist Men's Day as observed in the churches. It is our prayer that men will continue and enlarge their mission activities on a day-to-day, week-to-week basis.

Not too many weeks away is a weekend opportunity for Baptist Men interested in Bold Missions and in what men can do. The State Baptist Men's Meeting is scheduled for March 10-11, at Camp Paron. A key speaker will be John Cecil, consultant in Department of Laymen Overseas of the Foreign Mission Board.

Another key speaker will be Forrest Sawyer, Director of the Brotherhood work in Kentucky.

These two men are outstanding in the field of missionary education and mission activities.

There will be other men who will be sharing with us the activities and experiences that have been meaningful to them. Plan now to attend. Information has been mailed to all Baptist Men Presidents, Brotherhood Directors, and workers and pastors. — C. H. Seaton, Director

Clean used church buses

### J & M Motors

Hwy. 65, South  
Conway, Ark.

329-6634 or 329-6176

### PEW CUSHIONS

Comfort and beauty. At prices your Church can afford.

For free estimate contact

**FLOWERS MANUFACTURING, INC.**  
P.O. Box 587, Keene, Tex. 76059  
Phone: A-C 817-645-9203



### MEET EVELYN FORT INFORMATION DESK SPECIALIST

Evelyn is in charge of the Sunday School Board's Information Desk, a new service to provide information about the Board's programs and other services.

Often callers do not know which of the 950 Nashville Board employees to contact for a specific service. Evelyn knows. If you need assistance but don't know who to call, call Evelyn.

#### FOR INFORMATION DESK SERVICE • DIAL (615) 251-BSSB

Other Sunday School Board service phones

- BSSB personnel and office numbers-(615)251-2000
- Literature orders-(615)251-2633
- Bookstore orders—your nearest Baptist Book Store or mail order center.

### 22-day European Tour



Dr. Hammond

June 10-July 1

France, Austria, Germany, Switzerland, Holland, England

#### Contact:

**Dr. Paul Hammond**

**Box 710, OBU**

**Arkadelphia, Ark. 71923**



# Contributions from churches and missions to Arkansas Baptist Family and Child Care Services — 1977

(Thanksgiving Offering, Mother's Day Offering, church budget, birthday, sponsorship, etc.)  
Notify Johnny G. Biggs, P.O. Box 552, Little Rock, Ark. 72203, if an error is found in this report.  
Thank you, Arkansas Baptists.

<p><b>ARKANSAS VALLEY</b></p> <p>Brickens \$ 50.52</p> <p>Brinkley, 1st 423.50</p> <p>Calvary, West Helena 95.00</p> <p>Chatfield 114.00</p> <p>Clarendon 282.50</p> <p>Elaine 605.00</p> <p>Friendship 375.96</p> <p>Helena, 1st 516.10</p> <p>Hughes 55.00</p> <p>Lambrook 19.70</p> <p>Lexa 319.53</p> <p>Marianna, 1st 12.00</p> <p>Moro 583.00</p> <p>Petty's Chapel 50.00</p> <p>Snow Lake 85.00</p> <p>Turner 375.84</p> <p>West Helena 395.72</p> <p>West Helena, 2nd 537.80</p> <p><b>TOTAL \$4,895.17</b></p> <p><b>ASHLEY</b></p> <p>Corinth \$ 51.00</p> <p>Crossett, 1st 1,103.02</p> <p>Eden 121.05</p> <p>Fountain Hill 337.16</p> <p>Gardner 48.95</p> <p>Jarvis Chapel 783.98</p> <p>Magnolia 65.00</p> <p>Meridian 293.11</p> <p>Mt. Olive 331.85</p> <p>Mt. Pleasant 75.00</p> <p>North Crossett 10.00</p> <p>Sardis 35.00</p> <p>Shiloh 50.00</p> <p>Temple 200.00</p> <p>Southern Baptist Mission 50.00</p> <p><b>TOTAL \$3,555.12</b></p> <p><b>BARTHOLOMEW</b></p> <p>Antioch \$ 60.00</p> <p>Cominto 25.00</p> <p>Corinth B 34.00</p> <p>Eagle Lake 10.62</p> <p>Ebenezer 69.00</p> <p>Enon 97.06</p> <p>Florence 50.00</p> <p>Hermitage 63.66</p> <p>Immanuel, Warren 359.80</p> <p>Macedonia 200.00</p> <p>Marsden 20.00</p> <p>Monticello, 1st 750.00</p> <p>Monticello, 2nd 80.71</p> <p>Northside, Monticello 66.25</p> <p>Pleasant Grove 10.00</p> <p>Saline 26.81</p> <p>Union Hill 60.75</p> <p>Warren, 1st 200.00</p> <p>West Side Chapel, Warren 46.90</p> <p>Wilmar 119.08</p> <p><b>TOTAL \$2,351.64</b></p> <p><b>BENTON</b></p> <p>Bella Vista \$ 312.80</p> <p>Bentonville, 1st 477.64</p> <p>Centerton, 1st 267.78</p> <p>Central Avenue, Bentonville 36.21</p> <p>Garfield 99.45</p> <p>Gentry 1,163.67</p> <p>Gravette 14.31</p> <p>Gum Springs 139.00</p> <p>Highfill 107.02</p> <p>Immanuel, Rogers 75.00</p> <p>Lakeview 51.09</p> <p>Lowell 140.00</p> <p>Mason Valley 62.94</p> <p>Monte Ne 123.03</p>	<p>Open Door 58.13</p> <p>Park Street 58.81</p> <p>Pea Ridge, 1st 263.98</p> <p>Rogers, 1st \$ 59.56</p> <p>Ro-Lynn, Rogers 85.00</p> <p>Siloam Springs, 1st 1,246.50</p> <p>Sugar Creek 51.55</p> <p>Sulphur Springs 4.87</p> <p>Sunny Side 106.98</p> <p>Trinity, Rogers 83.29</p> <p>Twelve Corners 165.50</p> <p><b>TOTAL \$5,254.11</b></p> <p><b>BIG CREEK</b></p> <p>Cherokee Village \$ 140.00</p> <p>County Line 15.00</p> <p>Elizabeth 38.00</p> <p>Flora 22.00</p> <p>Gum Springs 13.50</p> <p>Spring River 42.29</p> <p>Viola 300.00</p> <p><b>TOTAL \$ 575.79</b></p> <p><b>BLACK RIVER</b></p> <p>Alicia \$ 144.35</p> <p>Amagon 28.00</p> <p>Black Rock 131.00</p> <p>College City 43.48</p> <p>Diaz 117.96</p> <p>Grubbs 115.00</p> <p>Horseshoe 25.00</p> <p>Hoxie 100.00</p> <p>Imboden 95.00</p> <p>Immanuel, Newport 275.00</p> <p>Jacksonport 35.00</p> <p>New Hope #1 14.00</p> <p>New Hope #2 50.00</p> <p>Newport, 1st 1,414.05</p> <p>Old Walnut Ridge 58.61</p> <p>Pitts 9.33</p> <p>Sedgwick 50.00</p> <p>Smithville 73.16</p> <p>Swifton 50.00</p> <p>Tuckerman 75.50</p> <p>Walnut Ridge, 1st 410.55</p> <p>White Oak 250.00</p> <p><b>TOTAL \$3,564.99</b></p> <p><b>BUCKNER</b></p> <p>Abbott \$ 40.20</p> <p>Bates 50.00</p> <p>Cauthron 100.00</p> <p>Clark's Chapel 140.10</p> <p>Dayton 257.21</p> <p>Evening Shade 100.00</p> <p>Fellowship 48.00</p> <p>Friendship 6.48</p> <p>Hartford, 1st 806.75</p> <p>Haw Creek 333.50</p> <p>Hon 50.21</p> <p>Huntington 141.45</p> <p>Ione 47.11</p> <p>James Fork 87.36</p> <p>Long Ridge 100.00</p> <p>Mansfield 394.30</p> <p>New Providence 56.00</p> <p>Parks 107.78</p> <p>Pleasant Grove #2 160.00</p> <p>Rock Creek 30.05</p> <p>Shiloh 50.00</p> <p>Temple, Waldron 67.12</p> <p>Union Hope 50.00</p> <p>Unity 176.20</p> <p>Waldron, 1st 709.49</p> <p>West Hartford 75.50</p> <p>Winfield 242.00</p> <p><b>TOTAL \$4,426.81</b></p>	<p><b>BUCKVILLE</b></p> <p>Cedar Glades \$ 152.02</p> <p>Mt. Tabor 17.00</p> <p>Rock Springs 100.00</p> <p><b>TOTAL \$ 269.02</b></p> <p><b>CADDO RIVER</b></p> <p>Amity \$ 301.00</p> <p>Black Springs 25.00</p> <p>Glenwood 1,305.17</p> <p>Little Hope 91.00</p> <p>Lake Quachita, Mt. Ida 50.00</p> <p>Mt. Ida \$ 117.00</p> <p>Norman 40.89</p> <p>Oak Grove 25.59</p> <p>Oden 22.00</p> <p>Pencil Bluff 114.65</p> <p>Refuge 47.50</p> <p><b>TOTAL \$2,139.80</b></p> <p><b>CALVARY</b></p> <p>Antioch \$ 200.00</p> <p>Augusta, 1st 1,200.00</p> <p>Beebe, 1st 280.00</p> <p>Bethany 19.00</p> <p>Central, Bald Knob 534.50</p> <p>Cotton Plant, 1st 59.80</p> <p>Crosby 150.00</p> <p>El Paso 99.92</p> <p>Good Hope 34.00</p> <p>Grace 77.00</p> <p>Gregory 40.00</p> <p>Higginson 164.21</p> <p>Judsonia 169.00</p> <p>Kensett 273.00</p> <p>Liberty 50.00</p> <p>McCrary 65.00</p> <p>McRae 110.00</p> <p>Midway 100.00</p> <p>Norrow 23.15</p> <p>Patterson 80.77</p> <p>Pleasant Grove 110.00</p> <p>Pleasant Valley 9.00</p> <p>Raynor Grove 25.00</p> <p>Rocky Point 184.91</p> <p>Rosebud 291.70</p> <p>Searcy, 1st 391.00</p> <p>Searcy, 2nd 194.67</p> <p>Temple, Searcy 201.54</p> <p>Trinity, Searcy 140.00</p> <p>Tupelo 84.30</p> <p>West Point 100.00</p> <p>Valley, Searcy 70.00</p> <p><b>TOTAL \$5,521.47</b></p> <p><b>CAREY</b></p> <p>Bearden, 1st \$ 362.43</p> <p>Calvary, Camden 23.00</p> <p>Dalark 50.00</p> <p>Faith 150.00</p> <p>Fordyce, 1st 300.00</p> <p>Hampton 125.00</p> <p>Harmony 20.00</p> <p>Holly Springs 100.00</p> <p>Manning 112.82</p> <p>Ouachita 103.00</p> <p>Shady Grove 100.00</p> <p>Southside, Fordyce 53.00</p> <p>Sparkman 592.50</p> <p>Thornton 192.12</p> <p>Willow 60.19</p> <p><b>TOTAL \$2,344.06</b></p> <p><b>CAROLINE</b></p> <p>Austin Station \$ 89.32</p> <p>Biscoe 101.30</p> <p>Brownsville 30.10</p> <p>Cabot, 1st 1,005.08</p>	<p>Carlisle 161.44</p> <p>Chambers 43.72</p> <p>Cocklebur 56.00</p> <p>Coy 134.40</p> <p>Cross Roads 100.00</p> <p>Des Arc 540.15</p> <p>DeValls Bluff 79.93</p> <p>England, 1st 120.00</p> <p>Nazken 440.25</p> <p>Humoke 59.18</p> <p>Immanuel, Carlisle 85.55</p> <p>Keo 2,970.00</p> <p>Lonoke 578.71</p> <p>Mountain Springs 106.30</p> <p>New Hope 83.92</p> <p>Oak Grove 232.00</p> <p>Old Austin \$ 240.72</p> <p>Pleasant Hill 44.00</p> <p>Toltec 308.88</p> <p>Ward 114.45</p> <p>Wattensaw 79.32</p> <p><b>TOTAL \$8,804.78</b></p> <p><b>CENTENNIAL</b></p> <p>Aberdeen \$ 23.00</p> <p>Almyra 1,494.00</p> <p>DeWitt 425.50</p> <p>East Side, DeWitt 50.00</p> <p>Gillett, 1st 70.05</p> <p>North Maple 58.00</p> <p>Reydel 507.00</p> <p>Southside, Stuttgart 65.00</p> <p>St. Charles 67.15</p> <p>Stuttgart, 1st 647.00</p> <p>Tichnor 60.00</p> <p>Northside Mission, DeWitt 179.95</p> <p><b>TOTAL \$5,646.65</b></p> <p><b>CENTRAL</b></p> <p>Benton, 1st \$1,950.00</p> <p>Bryant, 1st Southern 45.06</p> <p>Calvary, Benton 200.00</p> <p>Central, Hot Springs 175.00</p> <p>Emmanuel, Hot Springs 72.48</p> <p>Fairdale 66.79</p> <p>Grand Ave., Hot Springs 428.78</p> <p>Harvey's Chapel 123.40</p> <p>Highland Heights 680.00</p> <p>Hot Springs, 1st 102.70</p> <p>Hot Springs, 2nd 252.00</p> <p>Jessfeville 58.46</p> <p>Lake Hamilton 68.00</p> <p>Lakeshore Heights 127.61</p> <p>Lee Chapel 92.42</p> <p>Malvern, 3rd 141.00</p> <p>Memorial 29.00</p> <p>Mill Creek 132.00</p> <p>Mountain Pine \$ 126.84</p> <p>Mountain Valley 86.10</p> <p>Old Union 49.00</p> <p>Owensville 75.61</p> <p>Park Place 48.22</p> <p>Pearcy 46.00</p> <p>Piney 256.78</p> <p>Pleasant Hill 193.00</p> <p>Rector Heights 40.67</p> <p>Riverside 151.68</p> <p>Salem 279.75</p> <p>Sheridan, 1st Southern 111.64</p> <p>Trinity, Benton 281.00</p> <p>Walnut Valley 301.02</p> <p>Hurricane Lake 194.00</p> <p>Indian Springs 40.80</p> <p><b>TOTAL \$7,026.81</b></p>
---	--	---	---



CLEAR CREEK		Nimrod	130.00	FAULKNER		Pine Bluff, 2nd	66.00
Alma, 1st	\$ 351.00	Perry	124.87	Beryl	\$ 177.67	Plum Bayou	62.50
Altus, 1st	41.00	Perryville	205.00	Bono	25.00	Rankin Chapel	48.45
Batson	169.00	Pleasant Grove	50.00	Brumley Chapel	130.00	Rison	350.00
Cass	20.00	Plumerville	398.32	Cadron Ridge	23.14	Shannon Road	62.04
Cedarville	110.68	Thornburg	147.00	Conway, 1st	386.08	Southside, Pine Bluff	65.00
Clarksville, 1st	360.91	Union Valley	113.40	Conway, 2nd	247.00	Star City	1,006.24
Clarksville, 2nd	93.53	TOTAL	\$7,715.40	Enola	31.00	Watson Chapel	60.00
Concord	64.45	CURRENT-GAINS		Friendship	26.26	White Sulphur Springs	85.00
Dyer	100.60	Biggers	\$ 192.81	Gold Creek	20.69	Yorktown	20.00
East Mt. Zion, Clarksville	320.00	Columbia Jarrett	41.18	Harlan Park	52.00	TOTAL	\$8,679.92
Hagarville	91.69	Corning, 1st	581.50	Harmony	1,038.10	INDEPENDENCE	
Hartman	24.60	Emmanuel, Piggott	40.50	Holland	100.00	Arbana	\$ 19.55
Kibler	216.38	Greenway	139.45	Mayflower, 1st	405.71	Batesville, 1st	305.00
Lamar	386.00	Harmony	38.00	Mt. Vernon	41.70	Calvary, Batesville	215.17
Mountainburg	50.00	Holly Island	140.30	Oak Bowery	742.27	Cord	65.00
Mulberry	284.49	Hopewell	69.74	Pickles Gap	266.47	Desha	73.32
Oak Grove	1,154.33	Mt. Pleasant	11.20	Pleasant Grove	60.00	Emmanuel, Batesville	67.84
Ozark	436.00	New Hope	130.25	Union Hill	25.00	Floral	118.85
Ozone	93.69	Nimmons	52.00	Wooster	36.50	Marcella	\$ 106.10
Shady Grove	15.96	Oak Grove	125.00	TOTAL	\$7,835.39	Mountain View	110.00
Shibley	76.37	Peach Orchard	25.00	GREENE		Mt. Zion	150.75
Trinity, Alma	\$ 22.00	Piggott	\$ 543.58	Alexander	\$ 263.64	Pilgrims Rest	124.74
Union Grove	24.80	Pocahontas	122.60	Beech Grove	50.00	Pleasant Plains	35.73
Uniontown	67.16	Ravenden Springs	112.78	Big Creek	65.00	Rehobeth	123.49
Van Buren, 1st	540.27	Rector	666.98	Brown's Chapel	100.85	Rosie	664.73
Webb City	86.00	Reyno	56.59	Calvary, Paragould	87.05	Ruddle Hill	102.48
Woodland	132.00	Shannon	173.00	Center Hill	70.00	Salado	190.00
Van Buren, 1st Mission	20.00	Shiloh, Corning	45.60	Clark's Chapel	143.17	Sulphur Rock	55.35
TOTAL	\$5,352.91	St. Francis	1,245.00	Delaplafne	185.10	West Batesville	470.15
CONCORD		Success	50.00	East Side, Paragould	148.83	White River	85.66
Barling	\$ 99.06	TOTAL	\$4,603.06	Fairview	90.00	North Side	124.91
Bloomer	50.00	DARD-RUSSELLVILLE		Finch	133.59	Southern Baptist Newark Mission, Cord	19.50
Bluff Avenue	717.27	Atkins	\$ 187.30	Fontaine	30.00	TOTAL	\$3,188.32
Booneville, 1st	122.49	Centerville	50.00	Immanuel, Paragould	268.00	LIBERTY	
Branch	67.15	Danville	229.00	Lafe	100.00	Calton	\$ 88.94
Burnsville	50.00	Dardanelle	158.00	Lake Street	60.00	Camden, 1st	1,292.75
Calvary, Ft. Smith	129.00	Dover	91.78	Light	357.90	Cnidester	100.00
Charleston, 1st	206.63	East Point	126.77	Marmaduke	185.49	Cross Roads	496.06
East Side, Ft. Smith	30.00	Fair Park	70.98	Mounds	250.00	Cullendale, 1st	624.00
Excelsior	71.35	Havana	190.99	New Friendship	124.15	East Main	480.00
Fort Smith, 1st	12.00	Hopewell	50.00	New Liberty	300.00	Ebenezer	478.41
Glendale	81.00	Immanuel, Russellville	110.00	Nutt's Chapel	335.00	El Dorado, 1st	4,724.92
Grand Ave., Ft. Smith	1,083.27	Kelley Heights	31.00	Oak Grove	20.62	El Dorado, 2nd	683.80
Grayson	50.00	Knoxville	200.00	Paragould, 1st	1,364.18	Ellifott	33.00
Greenwood, 1st	120.00	Moreland	105.00	Pleasant Valley	43.40	Fairview Road	27.30
Hackett	42.53	New Hope	43.50	Robb's Chapel	125.00	Felssenthal	212.00
Haven Heights	693.50	Pittsburg	100.00	Rosewood	59.10	Galliee	187.35
Immanuel, Ft. Smith	269.00	Plainview	171.17	Stanford	100.00	Harmony	127.92
Jenny Lind	91.22	Pleasant View	44.23	Stonewall	20.00	Hillside	181.00
Lavaca, 1st	25.80	Pottsville, 1st	97.75	Unity	234.50	Huttig	335.00
Magazine	49.31	Russellville, 2nd	182.45	Vine's Chapel	12.00	Immanuel, El Dorado	1,042.75
Mixon	84.48	TOTAL	\$2,239.92	Walcott	96.68	Junction City	300.00
Mt. Harmony	135.02	DELTA		West View	171.60	Knowles	52.00
Mt. Zion	50.00	Arkansas City	\$ 49.34	TOTAL	\$5,594.85	LaPile	90.00
New Hope	111.61	Aulds	222.25	HARMONY		Lawson	51.38
Northside, Charleston	40.46	Bellaire	164.00	Altheimer	\$ 37.00	Liberty	100.00
Northside, Ft. Smith	169.67	Boydell	25.00	Anderson Chapel	54.25	Maple Avenue	600.38
Oak Cliff	203.00	Chickasaw	97.02	Centennial	175.69	Marrable Hill	\$ 40.23
Palestine	221.04	Collins	111.00	Central	150.81	New London	120.00
Paris, 1st	458.00	Dermott	464.25	Dollarway	\$ 130.95	Norphlet	350.16
Phoenix Village	\$ 204.40	Eudora	\$ 385.00	Douglas	69.00	Park View	22.32
Ratcliff	143.02	Gaines	25.00	Dumas, 1st	396.05	Philadelphia	240.00
Roseville	120.00	Jennie	100.00	East Side, Pine Bluff	121.00	Salem	50.00
Rye Hill	95.00	Kelso	541.59	Forrest Park	247.12	Smackover	793.00
Southside, Booneville	238.61	Lake Village	164.00	Gould	307.02	Southside	38.00
Southside, Ft. Smith	250.25	McGehee, 1st	622.81	Grady	261.00	Stephens	364.00
Spradling	117.22	Monrose	45.96	Green Meadows	185.00	Strong	275.00
Temple	220.24	New Hope	100.00	Greenlee	101.00	Temple, Camden	98.15
Trinity	123.71	Northside	189.00	Hardin	249.20	Temple, El Dorado	57.17
Union Hill	20.00	Parkdale	32.00	Hickory Grove	368.00	Three Creeks	62.57
Delaware	78.82	Parkway	42.20	Humphrey	387.99	Trinity	771.84
Westside Chapel	211.75	Portland	246.50	Immanuel, Pine Bluff	262.50	Union	305.00
TOTAL	\$7,356.88	Richland	41.86	Kingsland	181.41	Urbana	56.00
ONWAY-PERRY		Shiloh	82.00	Lee Memorial	261.50	Victory	129.09
Casa	\$ 240.31	Temple	27.70	Linwood	105.18	Village	258.00
Harmony	31.00	Tillar	41.67	Matthew's Memorial	295.79	Wesson	100.00
Houston	25.50	Watson	128.33	Oak Grove	92.00	West Side, El Dorado	250.00
Morrilton, 1st	250.00	Wilnot	48.50	Oakland	67.00		
		TOTAL	\$3,996.98	Pine Bluff, 1st	2,320.23		



Wildwood	35.00	Buffalo Chapel	32.21	Morrison Chapel	448.86	Cedar Grove	68.40
TOTAL	\$16,724.49	Central, Jonesboro	678.19	Park Hill	1,903.79	Center Point	50.00
LITTLE RED RIVER		Childress	128.07	Pike Avenue	302.33	Curtis	80.22
Center Ridge	\$ 150.00	Dixie	25.00	Remount	171.00	DeGray	118.00
Concord	100.00	Egypt	109.40	Runyan	13.78	Emmet	30.00
Harris Chapel	205.24	Friendly Hope	176.00	Sherwood	89.00	Hollywood	60.00
Heber Springs, 1st	110.00	Jonesboro, 1st	1,637.85	16th Street	44.00	Marlbrough	35.00
Life Line	10.00	Lake City	275.00	Sylvan Hills	411.00	Okolona	14.00
New Bethel	75.00	Monette	105.00	Zion Hill	279.00	Park Hill	787.27
Pleasant Ridge	17.15	Mt. Pisgah	112.79	TOTAL	\$8,817.25	Prescott, 1st	273.00
Post Oak	25.00	Mt. Zion	386.80	QUACHITA		Richwoods	217.00
Quitman, 1st	305.00	Needham	21.97	Concord	\$ 20.00	Shady Grove	15.29
Southside, Heber Springs	50.00	Nettleton	330.10	Cove	138.78	Shiloh	323.74
TOTAL	\$1,047.39	New Antioch	338.29	Dallas Avenue, Mena	15.00	South Fork	50.00
LITTLE RIVER		New Hope, Black Oak	12.82	DeQueen, 1st	486.50	Third Street	53.50
Ashdown	\$ 331.18	New Hope, Jonesboro	3.78	Gillham	37.00	Unity	654.00
Ben Lomond	16.60	Philadelphia	128.07	Grannis	60.97	TOTAL	\$3,979.02
Bingen	300.00	Rowe's Chapel	40.00	Hatfield	\$ 197.46	ROCKY BAYOU	
Brownstown	60.00	Strawfloor	24.58	Hatton	259.84	Boswell	\$ 159.12
Central, Mineral Springs	146.50	University	\$ 67.31	Mena, 1st	307.15	Calico Rock	174.00
Chapel Hill	\$ 116.20	Walnut Street	343.40	Midway, Cove	20.00	Dolph	15.00
Columbus	236.29	Westvale	79.60	New Hope	2.28	Evening Shade	97.98
Dierks	94.00	Wood Springs	46.30	Two Mile	25.00	Finley Creek	30.00
Foreman	315.63	TOTAL	\$5,923.34	Vandervoort	129.91	Hardy	110.55
Hicks	173.00	NORTH ARKANSAS		Wickes	137.50	Melbourne	50.00
Horatio	207.21	Alpena	\$ 297.07	Yocana	255.75	Myron	20.47
Kern Heights	136.00	Bear Creek Springs	175.97	TOTAL	\$2,093.14	Oxford	126.00
Lockesburg	315.00	Bellefonte	79.00	PULASKI		Sage	76.71
Lone Oak	50.00	Berryville, 1st	130.50	Alexander	\$ 253.36	Sidney	126.36
Nashville	648.00	Burlington	95.33	Baptist Tabernacle	216.79	Zion Hill	49.00
Ogden	145.30	Cassville	75.00	Barnett Memorial	149.31	TOTAL	\$1,035.19
Ridgeway	32.00	Deer	145.59	Bingham Road	131.96	SEARCY	
State Line	43.00	Eagle Heights	546.17	Brookwood	86.91	Leslie	\$ 231.65
Washington	89.00	Elmwood	106.75	Calvary, Little Rock	300.00	Morning Star	41.69
Wilton	301.16	Everton	100.00	Chicot Road	75.00	TOTAL	\$ 273.34
Winthrop	61.39	Gaither	12.00	Crystal Hill	200.00	SOUTHWEST ARKANSAS	
TOTAL	\$3,817.46	Grandview	174.52	Douglasville	22.00	Arabella Heights	\$ 32.00
MISSISSIPPI		Green Forest	359.58	East End	94.50	Beech Street, 1st	762.00
Amorel	\$ 245.45	Grubb Springs	125.42	Forest Highlands	281.60	Bradley	149.00
Bethany	20.47	Harrison, 1st	10.00	Forest Tower	24.05	Bronway Heights	10.71
Black Water	65.40	Hopewell	208.00	Garden Homes	127.00	Calvary, Hope	125.00
Blytheville, 1st	563.15	Jasper	180.00	Geyer Springs, 1st	5,702.86	Calvary, Texarkana	571.00
Brown's Chapel	78.58	Lakeland	75.00	Hebron	91.00	Canfield	307.38
Calvary, Blytheville	126.86	Lead Hill, 1st	150.00	Holly Springs	250.00	Central, Magnolia	3,526.00
Calvary, Osceola	109.28	Marble Falls	10.00	Immanuel, Little Rock	1,595.00	Fouke, 1st	258.00
Clear Lake	696.00	Marshall	168.59	Ironton	135.87	Garland	30.00
Cole Ridge	200.00	New Hope	76.00	Lakeshore Drive	40.00	Genoa	70.53
Cross Roads	78.22	Northvale	603.85	Little Rock, 1st	551.63	Guernsey	25.60
Dell	147.91	Omaha	50.00	Little Rock, 2nd	672.09	Harmony Grove	200.00
Emmanuel, Blytheville	37.51	Osage	75.00	Markham Street	70.18	Hickory Street, Texarkana	44.00
Gosnell	125.70	Parthenon	26.05	Martindale	100.00	Highland Hills	148.65
Keiser	148.00	Rock Springs	324.75	Nail's Memorial	989.82	Hope, 1st	1,524.70
Leachville	600.00	Rudd	49.07	Natural Steps	232.25	Immanuel, Magnolia	633.93
Leachville, 2nd	106.55	St. Joe	50.30	Pine Grove	80.09	Lewisville, 1st	5.00
Luxora	130.91	Trinity, Harrison	40.00	Plain View	24.13	Macedonia #1	25.00
Manila, 1st	195.25	Union	55.00	Pleasant Grove	79.67	Memorial, Waldo	816.50
Mary's Chapel	79.04	Valley Springs	\$ 56.12	Pulaski Heights	\$1,321.00	Mt. Zion	300.00
Memorial	47.43	Woodland Heights	303.86	Reynolds Memorial	214.31	Piney Grove	\$ 30.46
New Harmony	20.00	Western Grove Chapel	19.28	Rosedale	151.25	Pisgah	28.53
New Liberty	\$ 99.96	TOTAL	\$4,983.77	Shady Grove	522.20	Rocky Mound	50.00
New Providence	139.92	NORTH PULASKI		Shannon Hills	25.00	Shiloh Memorial	178.93
Number Nine	72.11	Amboy	\$ 115.25	Sheridan, 1st	157.50	South Texarkana	79.78
Osceola, 1st	444.22	Good News Mission	40.39	Sunset Lane	115.00	Stamps, 1st	644.61
Ridgecrest	120.00	Baring Cross	513.20	Tyler Street	149.50	Silverino	50.00
Rosa	2.00	Bayou Meto	410.00	Vimy Ridge	87.62	Tennessee	46.32
Trinity	92.96	Berea	34.59	West Side	203.98	West Side, Magnolia	12.65
Wardell	70.00	Bethany	103.19	Woodlawn	86.00	TOTAL	\$10,626.28
Westside, Manila	60.00	Calvary, North Little Rock	438.00	Woodwon	63.00	TRI-COUNTY	
Whitton	119.80	Cedar Heights	224.85	TOTAL	\$15,673.43	Antioch	\$ 39.00
Wilson	246.00	Central, North Little Rock	450.00	RED RIVER		Beckspur	100.00
Woodland Corner	50.80	Chapel Hill	80.00	Anchor	\$ 41.00	Calvary, W. Memphis	150.00
Yarbro	493.43	Crystal Valley	177.00	Antoine	73.78	Colt	75.00
TOTAL	\$5,832.91	Grace	50.00	Arkadelphia, 1st	26.50	Earle	319.65
MT. ZION		Gravel Ridge	25.00	Arkadelphia, 2nd	180.60	Fair Oaks	146.87
Bay	\$ 230.94	Graves Memorial	500.00	Beech Street, Gurdon	563.41	Forrest City, 1st	300.00
Bethabara	271.00	Highway	823.00	Beirne	107.31	Goodwin	62.20
Black Oak	316.58	Jacksonville, 1st	894.02	Bethel	56.00	Harris Chapel	125.00
Bono	31.87	Jacksonville, 2nd	75.00	Bethlehem	75.00	Hydrick	20.00
Bowman	129.62	Levy	195.00	Boughton	26.00	Madison	60.00
						Marion	267.00



# MSC volunteers excited

by Norman Jameson

MENOMONIE, Wis. (BP) — Their phone rings often with requests for help from people they don't know; church members constantly stop by their apartment in the fellowship hall; their church debt totals about \$3,000 per member and a Methodist church is scheduled to build right next door.

So why are Elgin and Jean Lee so happy?

The first Southern Baptist Mission Service Corps volunteers assigned, the Lees bubble with enthusiasm in this chilly Wisconsin town. Elgin, who worked for 18 years on the Missouri Baptist Convention staff, seems continually amazed at what is going on at River Heights Baptist Church in Menomonie, the church he and his wife were sent here to save.

Alice Carter, church clerk and faculty member at Stout State University, explains that the few remaining members had about resigned themselves to closing the doors of the church by Christmas if they didn't get a pastor.

Then the wheels of Mission Service Corps, proposed only in June at the annual meeting of the Southern Baptist Convention, ground into action. The Lees volunteered for two years service, bringing the name of a donor who volunteered to support them on the field. The Southern Baptist Home Mission Board in Atlanta learned of the needs of River Heights and asked the

Lees to serve there.

"How about that?" Lee says with a comical, questioning smile that reflects amazement at the circumstances. But his eyes reveal a happy man with depth and understanding.

Lee's years as student director for Missouri Baptists serve him well in Menomonie, a town with 11,500

resident population where the main influence is the 6,500-student Stout State University, named after early lumber barons. River Heights' youth and assistant youth directors and pianist are Stout students and many other members are connected with the university.

River Heights began in 1969 when Menomonie native Walter Stewart



MENOMONIE, Wis. — River Heights Church would have ceased operations by Christmas but the first Mission Service Corps couple arrived and Miles and Jean Lee say prospects are now bright for a prosperous church. (BP) photo by Norman Jameson.

Midway	22.76	Pleasant Valley	234.00	Combs	20.00	Cotter, 1st	297.77
Parkin	158.50	Providence	81.10	Elkins	20.00	East Side	180.61
Pine Tree	39.00	Red Oak	16.00	Elmdale	600.40	Flippin	150.00
Shell Lake	44.94	Riverdale	14.00	Farmington	61.16	Gassville	136.22
Tilton	62.00	Trinity	6.00	Fayetteville, 1st	251.00	Henderson	81.74
Togo	32.66	Trumann, 1st	100.00	Fayetteville, 2nd	100.00	Hopewell	43.87
Turrell	52.00	Tyronza, 1st	200.00	Friendship	50.98	Midway	83.76
Union Avenue	77.55	Valley View	64.42	Greenland	46.34	Mountain Home	683.22
Vandale	204.52	Weiner	110.00	Hindsville	94.47	New Hope	53.11
West Memphis, 2nd	149.78	Weidenburg	20.00	Huntsville	60.15	Pilgrim's Rest	46.00
Wheatley	150.00	TOTAL	\$3,334.95	Immanuel, Fayetteville	528.04	Pyatt	75.00
Widener	79.50	VAN BUREN		Johnson	38.00	Rea Valley	57.57
Wynne	929.03	Angora	\$ 16.25	Kingston	98.01	Summit	65.32
East Baptist Mission		Bee Branch	178.00	Liberty	200.16	Tomahawk	27.43
Wynne	50.00	Corinth	11.00	Lincoln	65.00	Whiteville	43.00
Gateway Mission, W. Memphis	52.29	Formosa	69.64	Oak Grove	35.00	Yellowville	250.00
TOTAL	\$3,759.25	Friendship	242.51	Prairie Grove	527.85	Big Flat Mission	
TRINITY		Lexington	25.00	Providence	89.36	Mountain Home	33.58
Black Oak	\$ 110.00	Pee Dee	77.00	Ridgeview	131.46	Bull Shoals	35.00
Calvary, Harrisburg	200.00	Plant	15.00	Rolling Hills	360.00	Hill Top	19.19
East Side, Trumann	43.00	Pleasant Valley	130.11	Sonora	169.06	TOTAL	\$2,414.68
Faith	80.00	Rupert	106.25	Southside, Fayetteville	73.65	OTHER CHURCHES	
Fisher	103.01	Scotland	74.61	Springdale, 1st	384.50	All Souls	\$ 60.00
Greenfield	173.15	Shady Grove	\$ 111.44	Spring Dale	100.00	Clinton, 1st	303.00
Lebanon	380.25	Shirley	51.03	Sulphur City	30.17	Eureka Springs	336.00
LePanto	363.34	Standley Memorial	214.88	West Fork	42.00	Faith, Batesville	106.72
Maple Grove	50.00	Zion	20.00	Winslow	169.25	Gateway, Blytheville	36.08
Marked Tree	566.61	Fairfield Bay Mission	87.00	Sang Ave. Mission	12.54	Missionary Grove, Prescott	75.00
McCormick	10.00	TOTAL	\$1,429.72	TOTAL	\$5,018.38	Mt. Holly Ministerial	
Neal's Chapel	147.57	WASHINGTON-MADISON		WHITE RIVER		Alliance	80.00
Neiswander	80.00	Black Oak	\$ 142.50	Antioch	\$ 15.00	Russellville, 1st	1,345.00
Pleasant Grove	132.50	Brush Creek	97.33	Bruno	37.29	Others	65.72
Pleasant Hill	50.00	Caudle Avenue	420.00			TOTAL	\$2,407.52



# about Wisconsin challenge

returned from retirement in Texas and found no Southern Baptist church in his home town. That condition lasted all of a week before he started services in his home. The church eventually called pastor Marvin Kemp, a Texan teaching at Stout, and moved to the current building located on five acres on the southern edge of the city. Stewart, 75, directed the church construction, done primarily by members.

A building loan was granted only because River Heights had a bivocational pastor and wasn't committed to a sizeable salary payment. But Kemp had to return to Texas about a year ago because of his wife's health. River Heights called a seminary student as pastor, but they couldn't afford a livable salary on top of building payments. The student returned to school in July.

From July until October, the church was pastorless and the members began to despair. Carter tells Lee that the congregation, which had dwindled to about a dozen, was praying for a miracle and says unabashedly, "You are the miracle."

"What would they have done without the Mission Service Corps?" Lee asks. "This is the tremendous thing about Mission Service Corps. How would we have ever gotten up here? MSC takes the donor and finances, locates the need and the missionary, and unites them."

Lee says if you're not Catholic or Lutheran, which two-thirds of the people are in the area, "you're not on the map." The community and even some discouraged church members questioned the need of a Southern Baptist church in Menomonie, the only Southern Baptist witness in a 120 mile area.

Associates in the ministerial alliance told Lee, "You mean you consider us a mission field?" But Lee says the telephone calls every week attest to the need of River Heights' witness in "Wild Rice," the Ojibwa Indian meaning of Menomonie.

"The challenge is just overwhelming," Lee says. "Of course the response has been overwhelming in every way. People are joining, attending, going. The response has been overwhelming and the potential is even greater than that. Weekly, we get calls for help."

Although only on the field a short time, the word is already out that Elgin Lee is a pastor who will help, even if you're not a member of his church. "We don't proselyte, but we go to meet needs," he says. As a result, River

Heights has visitors in nearly every service.

Lee is endowed with a self-deprecating humor and free flowing speech that puts a visitor immediately at ease. The former pastor of First Baptist Church, Doniphan, Mo., laughs when he tries to convince someone he became a preacher because he wasn't talented enough to do anything else as a teen witnessing in unchurched areas. His congregation says he is a strong preacher who never uses a note.

Many beautiful antiques grace the Lees apartment, mostly family heirlooms. Lee, 57, says his wife Jean was never interested in antiques, "until she met me." In the same breath he points to an ancient rocker and says that because his wife was rocked in it as a child it has to be at least 100 years old. "How about that?"

Jean, Lee's tall, eloquent wife of 11 years, is in charge of the church's music and gives piano lessons. She says at River Heights, where attendance has reached 60 in the few short weeks after their arrival, "anyone who thinks they can sing, gets to."

As the homemaker, Jean has overcome numerous problems that living in a church's fellowship hall can cause. Their apartment is basically one big room, partitioned by the strategic placement of furniture. Visitors ring the doorbell outside the church and one of the Lees must go down the hallway to let them in. They make the same trip to use the restroom.

Lee plans to see River Heights through until it is self-supporting. "Then we might consider becoming pastor here or taking another Mission Service Corps assignment, perhaps overseas this time," he says.

Words of the future are heady talk for a man who leads a church that only weeks ago was planning its final service. But the Lees have the tools and enthusiasm to make it work.

How about that?



## 'Christian Single' magazine approved

NASHVILLE (BP) — A monthly magazine for single adults, *Christian Single*, will begin publication by the Southern Baptist Sunday School Board in April 1979.

The magazine, in the design process for three years, was approved by the trustees at their Jan. 31 meeting in Nashville and will be produced by the family ministry department.

"There's no magazine for single adults in our denomination," said Joe Hinkle, secretary of the board's family ministry department. Through *Christian Single* we hope to provide help in developing lifestyles, personal and spiritual growth, guidance for programing in church groups, and news about what's happening with singles in churches."

Similar in style to *Home Life*, *Christian Single* will include articles for never marrieds, divorced and widowed persons, and single parents. It will include personality features on single adults.

## Ed Smith is one of a cast of thousands.

As a US-2 missionary in California, Ed shares Christ with people he meets on the beaches and ski slopes at Lake Tahoe. In a new Home Mission Board book, read about Ed, one example of thousands of home missions volunteers.

## AND A CAST OF THOUSANDS

192 pages, 8½" X 11"  
Baptist Book Stores, \$6.95





# Has the Sellers Home outlived its usefulness?

by Gary Crum

As you drive along a narrow residential street not far from the New Orleans inner city area, you might easily pass by the Sellers Home and think it to be simply a two-story brick apartment building. It is obviously in good repair, though not new, and has a small but well-kept lawn in the front. However, there are no signs announcing the fact that it is the Sellers Baptist Home and Adoption Center, an outreach of the Southern Baptist Convention's Home Mission Board.

The Sellers Home is many services rolled into one: a residential facility for up to 30 unwed mothers, an inpatient and outpatient obstetrical clinic, a

nursery for up to 24 new-born infants, a counseling service, and an adoption agency.

Unwed mothers of all faiths states, states and personal backgrounds are referred to the Home by their local pastors, by the welfare agencies in their home states, or sometimes on their own initiative. Whether the woman decides to keep her child after he or she is born or whether she decides to allow the child to be adopted, she is welcome to stay at the Home or receive outpatient maternity services.

Delivery of the child takes place at the Baptist Hospital in New Orleans, and the mother then returns to the Home with

her child. Before and after the delivery, the chaplain, social workers, nurses, and physicians who are affiliated with the Home provide the professional services necessary to help the mother face the spiritual and physical realities of her pregnancy.

Couples who desire to adopt children from the Home must first go through a detailed screening process and then wait an average of 18 months. There are just too many couples wanting children and too few children being put up for adoption to permit the process to be completed more quickly. However, couples who are willing to adopt a minority or handicapped child typically have to wait much less than the 18 month average. Preference is given to couples who are active members of a Southern Baptist church.

In these days of abortion-on-demand and one-parent families, some people have reached the conclusion that ministries such as the Sellers Home are no longer needed. The director of the Home, Mary Dan Kuhnle was hired in 1975 to evaluate whether or not the Home had indeed outlived its usefulness. Her successful efforts to increase the esteem and effectiveness of the Home's ministry have had a profound effect on the Home. More and more referrals are now coming in and the Home itself has taken on a cheery atmosphere and philosophy.

"We don't feel they have to be on their knees in contriteness before we help them", she says. "We pick them up where they are and try to help each girl understand her worth and value."

It is always an emotional moment when a husband and wife first see the infant that will be theirs through adoption, and the workers at the Home are often just as excited as the new parents. But as important and as moving as that moment might be, the Home's greatest ministry is not to the adoptive parents or even to the child. The atmosphere of new life which permeates every phase of the Sellers Home is in the ultimate analysis dedicated to the spiritual, social, and physical needs of the unwed mother, and that is how it should be.

(Dr. Crum served as a Christian Service Corps volunteer with the Sellers Home. He is a member of Holland Avenue Church in Cayce, S.C. The Sellers Home is located at 2010 Peniston Street, New Orleans, La. 70115; 504/895-2088.)



## STATION GUIDE FOR PROGRAMS BY YOUR RADIO-TV COMMISSION

A recent letter from an avid 'Country Crossroads' listener said: "My life

was torn by a divorce of which I knew nothing until it appeared in the newspaper. By listening to your show and getting inspiration from it, I began going to church. It has filled a great void in my life. Thank you for your message and your songs which make my life liveable.

### THE BAPTIST HOUR

BERRYVILLE	KTHS	1480	K	SU	0815AM
CONWAY	KCON	1230	K	SU	0200PM
CORNING	KCCB	1260	K	SU	0930AM
DEQUEEN	KDON	1390	K	SU	0625AM
FORDYCE	KBJT	1570	K	SU	0430PM
HOPE	KYAR	1490	K	SU	0100PM
MENA	KENA	1450	K	SU	0700AM
MONTICELLO	KHBM	1430	K	SU	0130PM
PARAGOULD	KDRS	1490	K	SU	0830PM
SILOAM SPGS	KUOA	1290	K	SU	0700AM
WYNNE	KWYN	1400	K	SU	0730AM

### POWERLINE

ARKADELPHIA	KSWH			TH	1000PM
CAMDEN	KJWH	1450	K	WE	1000PM
CORNING	KCCB	1260	K	WE	0530PM
DARDANELLE	KWKK			SU	0805PM
FAYETTEVILLE	KKEE	092.1M		SU	0500AM
FORT SMITH	KISR	093.7M		SU	0530AM
	ALSO			SU	0630AM
FORT SMITH	KWHN	1320	K	SU	0830PM
HELENA	KCRI	107.5M		SU	0700AM
LITTLE ROCK	KKYK	103.7M		SU	0700AM
MENA	KENA	1450	K	SU	0130PM
MENA	KSKR	101.7M		SU	0130PM
MOUNTAIN HOME	KTLD	1240	K	SA	0600PM
NASHVILLE	KNAS			SU	1200N
NEWPORT	KNBY	1280	K	SA	0300PM
OSCEOLA	KHFU	098.1M		SU	0900PM
OSCEOLA	KOSE	0860	K	SU	0900PM
PINE BLUFF	KOTN	1490	K	SU	0530AM
SEARCY	KSER	099.3M		SU	0800PM
TEXARKANA	KOSY	0790	K	SU	0745PM
TEXARKANA	KUSY	102.5M		SU	0800PM
TRUMANN	KTMN	1530	K	SU	0930AM

### COUNTRY CROSSROADS

BRINKLEY	KBRT	1570	K	TU	0230PM
BRINKLEY	KBRT	102.3M		TU	0230PM
CAMDEN	KAMD	0918	K	TH	1000PM
CORNING	KCCB	1260	K	SU	0700AM
HEBER SPRINGS	KAWW	1370	K	SU	0700AM
HELENA	KCRI	107.5M		SU	0800AM
HOT SPRINGS	KBMS	0590	K	SU	0430PM
LITTLE ROCK	KYLR	1150	K	SU	0700AM
MENA	KSKR	101.7M		SU	0100PM
MORRILLTON	KVOM	0800	K	SU	1200N
OSCEOLA	KOSE	0860	K	MO	0225PM
PARAGOULD	KDRS	1490	K	SU	0600PM
SILOAM SPGS	KUOA	1290	K	SA	0100PM
	ALSO			SA	0535PM
TRUMANN	KTMN	1530	K	SU	0800AM

### SOUL SEARCHERS

ARKADELPHIA	KSWH			MO	1000PM
FORT SMITH	KFSA	0950	K	SU	0745PM
MAGNOLIA	KFMV	107.9M		SA	0800PM

### MASTER CONTROL\*

BERRYVILLE	KTHS	1480	K	SU	1230PM
BRINKLEY	KBRT	1570	K	SU	0700
BRINKLEY	KBRT	102.3M		WE	0700PM
CORNING	KCCB	1260	K	SU	1000AM
DUMAS	KODA	1260	K	SU	0630AM
FAYETTEVILLE	KHOG	1490	K	SU	0630AM
FORDYCE	KBJT	1570	K	SU	1000AM
FORREST CITY	KXJK	0950	K	SU	1000AM
FORT SMITH	KWHN	1320	K	SU	0800PM
	ALSO			SU	0800
NASHVILLE	KBHC	1260	K	SU	0130PM
NEWPORT	KNBY	1280	K	SU	1200N
PARAGOULD	KDRS	1490	K	SU	1000AM
PRESCOTT	KTPA	1370	K	SU	0930AM
SILOAM SPGS	KUOA	1290	K	SA	1000AM
TEXARKANA	KOSY	0790	K	SU	0745PM
TEXARKANA	KOSY	102.5M		SU	0800PM
WYNNE	KWYN	1400	K	SU	0230PM

### NIGHTSONG

MENA	KENA	1450	K	MO	1045PM
	ALSO			FR	1045PM
MENA	KSKR	101.7M		MO	1045PM
	ALSO			FR	1045PM

### STREAMS IN THE DESERT

CORNING	KCCB	1260	K	SA	0300PM
NASHVILLE	KNAS			SU	0830AM
SPRINGDALE	KSPR	1590	K	SU	0930AM
WYNNE	KWYN	1400	K	SU	0330PM

Southern Baptist Radio-Television Commission / 6350 West Freeway / Fort Worth, TX 76150  
Paul M. Stevens, President



## Meeting God in public worship

Psalm 84

Feb. 19, 1978

No doubt this psalm was sung by the pilgrims on their way to the temple. It breathes of an air of joy and confidence. The writer was, in all probability, a lonely person and longed for the privilege of worship. He must have been a devoted lover of the temple and he had memories of when he had worshiped, but now worship was not possible.



Dishongh

### Joy in worshipping (Psalms 84:1-4)

The psalmist sees the beauty of the dwelling place of the Lord. "How amiable" is better rendered "how loved" or "how loveable." He sees the majesty of the temple, and stands in awe as he beholds it, however he grasps the deep feeling that in this beautiful place God meets with his people. Yes, God can meet you any place, for he is omnipresent, but God meets us in a special way in his temple.

Note that with his concern in verse 2 he says "my heart and my flesh crieth out for the living God." Here the "cry" is a cry for joy and the "longing" is not just for the temple, but for the "loving God." One can be a church attender and never know true worship unless he understands himself to be in the very presence of God. Nothing really happens in church, a building that is, unless God is worshiped in spirit and in truth. The psalmist soul, heart, and flesh all cry out for this experience in worship. Would not this be what Christ is asking us to do when he says "love the Lord with heart, soul, and mind." (Matt. 22:37)

The implication is here that the psalmist might be jealous of the birds who have found shelter and a nest in the altars of the temple. It was Alexander McClaren who noted that although the sparrows found shelter about the altars they were unaware of whose altars they were. This is indicative of us who do not realize that wherever we may be we are in the midst of God. Seemingly we are

unconscious of the watchful eye of God.

The psalmist truly is not resentful of the birds or of the people who live in the temple area. He sees in them the security God provides for his creation. As we come to worship we reflect on how good God has been, we reconsider him as our refuge, and we are refreshed by thoughts of his greatness. Here in the presence of God we worship.

### The blessing of the approach to God's house (Psalm 85:5-9)

There is not only the blessing of the privilege of being in God's house but in the approach there is blessing. The psalmist is here thinking of the pilgrim as he traveled the rocky hill country toward Jerusalem and how he was strengthened as he traveled.

We learn that the Valley of Baca was a waterless valley through which one passed enroute to Jerusalem. In the ancient translation it is called "valley of weeping" and it is probably the Valley of Achor (Hosea 2:15). Through such the worshiper passed and as he did so he was strengthened by his faith. (Isaiah 40:31). "From strength to strength" is a picture of the strength gotten daily as we fellowship with each other and with God. When we come to worship, we come with a bit of weariness and with problems seemingly impossible to solve, however, with true worship, association with fellow Christians and praise to God we are able to move from "strength to greater strength."

The pilgrim has step by step arrived to worship. He has been weary but has not fainted. This speaks to us in that day after day we are to be triumphant. We ought to climb spiritually upward day by day. If Christ lives in us, and we believe he does, then the inner man should be renewed day by day (II Cor. 4:16). Paul reasons that as our bodily strength fades as we go through life, our soul should keep growing.

### The result of our worship (Psalms 84:10-12)

To be able to spend some time in

God's house is in itself a blessing. To spend one day with the Lord in his sanctuary is better than a thousand some place else. The psalmist was willing to be a servant in the Lord's house rather than have a place of honor with the worldly. Here we see a contrast between the "house of God" and the "tents of the wicked." You have a choice but you can't have both. As Christians we need to positionize ourselves together as the manner of some is. "We hear people say "I can worship at the lake" or "I can worship out of doors." I would agree that one can worship any place, however, one needs the association and inspiration that comes from worshipping together. We ought to come to worship gladly, with joy, not as though we're doing God a favor by being in attendance.

In verse 11 and 12 we get the testimony of the psalmist that God is able to supply all needs and here a confidence in God is expressed. The reference to "sun and shield" are very fitting for just as the sun gives warmth, life, and light to nature and to the body, God does the same for our soul and also provides strength, security, and protection. Much more so than anything or person can. Those of us who have had a spiritual experience with God through the Holy Spirit know that we can go about our tasks with the assurance of God's goodness shining on us and of God's protection as we work. Really, isn't that what Christ is saying to us in Matthew 6:33 when he says "seek ye first the kingdom of God and His righteousness and everything else will be added."

Many of us sing "I love thy kingdom Lord, the house of thine abode," but do we mean it? Today's study will help us to re-evaluate our attitude toward the church and the worship hour. Many so called Christians never enter the house of worship, some are critical of the church and some are indifferent. Find your own position and ask yourself can I really exclaim, "How I love your temple"? Let's not forget that Christ loved the church, gave himself for it and if we really love Christ then we ought to have love for his church.

The Outlines of the International Bible Lesson for Christian Teaching, Uniform Series, are copyrighted by the International Council of Religious Education. Used by permission.



## The Lord's Prayer

John 17:9-21

When the apostle John wrote what we now call "The Gospel of John," he had a very simple purpose. "These are written," he said in John 20:31, "that ye might believe that Jesus is the Christ, the Son of God; and that believing ye might have life through his name."



Brockwell

Every word John recorded about Jesus' ministry was directed toward that one purpose. And no more precious document did John record than that of John 17. It is the living legacy Jesus left his followers and it was spoken by him to them in one of those rare moments in life when time stands still. We only have their silent reaction to his words. That too can be our only reaction to Jesus' stirring words of hope and victory. We must then act upon those words.

### "Father, the hour is come"

Every eye was fastened upon Jesus as he spoke words of comfort and victory to his small band of followers. They seemed to drink in every word he spoke as if to satisfy one last thirst. Jesus said more than they could comprehend, to be sure. "In the world," he assured them, "ye shall have tribulation; but be of good cheer; I have overcome the world." The outstretched hands of Jesus drew their full interest. Then their eyes followed his heavenward while he reached up with one hand and grasped the chord to pull down the final curtain upon his earthly ministry in the flesh. They didn't know what he was doing but they sensed it was awesome.

Jesus first prayed for his own consecration to the cross before him. The moment for which he had come was upon him and he must taste every bit of it. Only Jesus understood the true meaning of the cross as it related to the Father. Jesus would be glorified in his death and the Father's love would be forever manifest in the gift of eternal life. And what is eternal life? It is to know the only true God and Jesus Christ whom he has sent. That is the most profound and the most simple definition of eternal life you will ever read. Change it not, for it is true forever.

Since knowing God through Jesus Christ is eternal life, then Jesus' work is truly finished. Jesus constantly made men aware of God. He literally lived the

life of God because he came from God and he returned to God. "I gave them your words and they received them," Jesus emphasized. And what was the word from God? The word from God was Jesus Christ. He is all God has said or ever will say to mankind. God has said he loves each one of us and Jesus is love in person.

### "I pray for them"

No sooner did Jesus confess the faith of his disciples, did he then pray for their consecration to the task which lay ahead. They had received God's word but they must not contain it. They were chosen to send it out. But you know what? They were too scared, and too small, and too diverse, and too confused to do any such thing. Why it was ridiculous to expect them to carry on the work of Jesus! It was indeed, except for one fact: they belonged to God. "They are thine," Jesus proclaimed with confidence. You see, they were not just so many disciples but they were God's disciples. So Jesus made three petitions in their behalf and they apply to us as well.

(1) Protect them. Keep their character true to God's name. Jesus kept them while he was in the flesh and he prayed for their protection while he was in the spirit.

(2) Fill them with joy. The supreme joy of Jesus' life was obeying the Father. He wanted his disciples to taste that same joy. To insure that they would receive the same joy he did, Jesus gave them God's word of love. Jesus brought them into a personal relationship with God and that is the source of joy. Of course, the world immediately reacted to that closeness. They would not permit such closeness to God. They accused Jesus of blasphemy because he stressed his close relationship with the Father. The world does not want you to know God for the world will then lose its grip upon you. The prince of this world will use the world to influence you away from God but Jesus pulls you toward the Father. Just remember this: When you were listening to the world, God loved you. But when you started listening to God, the world hated you. That ought to tell you something!

(3) Keep them from the evil. The problem is this. Your source of strength

is God but your field of service is the world. Don't get them mixed up. Don't look to the world to have your needs met and don't start trying to dictate to God.

Jesus has left you in this world for a reason. You could have gone on to Heaven when you were first saved but instead God spared your life here. Have you any idea what for? Have you found your place in God's kingdom yet? All God wants is for you to make yourself available. Be willing to be a school teacher for Jesus, a homemaker for Jesus, a farmer for Jesus, a singer for Jesus, a government worker for Jesus. Remember, Jesus sent you into the world to testify for him. He has set you apart as his witness. Does anyone know you are a Christian?

### "That they may be one"

When Jesus lifted his eyes beyond the darkened Jerusalem horizon, he saw every Christian to be. He knew there would be more because he was sending these out. And so, in expectation of what God would do through these men, he prayed for us some 2,000 years down the line. Again, he asked for three things.

(1) Make them one as we are one. Jesus would have no favorites. Those who came later would enjoy the same privileges of fellowship as the first disciples.

(2) Let them be in us. There is one vine and all branches feed on the one. God is our source and each one of us must depend upon him. True, some branches will extend farther than others and some will bear more fruit than others but no branch can live without the vine. So the vine receives all the credit. The world will not believe God's purpose in Christ to restore broken fellowship if Christians continually fight each other.

(3) Let them be with me. The true heart of Jesus is wrapped up in these words. He wants us to share his glory! Jesus chose us before we ever knew him. And even though we hurt him and let him down, he desires us to be with him. Who could resist such love? Why turn down such a great invitation? His last will and testament was that we be with him. But he did leave us the choice to join him.

The prayer of Jesus for his own is the most precious thing in all the world. Now we know he cares. Now we know God wants us back. Now we know the gift of eternal life.

What a legacy Jesus left us!

This lesson treatment is based on the Life and Work Curriculum for Southern Baptist Churches, copyright by The Sunday School Board of the Southern Baptist Convention. All rights reserved. Used by permission.



# Attendance report

Feb. 5, 1978

Church	Sunday School	Church Training	Church adds.
Alexander			
First	124	45	
Hilldale	54	37	
Alpena, First	61		
Ash Flat, First	70		
Batesville			
First	256	103	1
Bentonville			
Central	73	34	
Mason Valley	80	39	
Berryville			
First	202	53	
Freeman Heights	164	85	3
Biscoe, First	88	47	2
Booneville			
First	256		
Blue Mountain	35		
Glendale	77	25	
South Side	97	52	
Bryant, First Southern	183	69	1
Cabot, First	464	152	
Camden, Cullendale First	525	136	
Charleston, First	179	66	
Conway			
Pickles Gap	161	101	
Second	411	165	3
Crossett			
First	503	156	1
Mt. Olive	342	118	2
Danville, First	217	38	
Des Arc, First	153	54	
El Dorado, West Side	440	434	4
Forrest City, First	529	72	1
H. Smith			
Grand Avenue	274	187	1
Mission	17		
Trinity	146	39	
Fouke, First	88	60	
Gentry, First	140	58	
Gillham	99	55	2
Grampview	107	80	
Green Forest, First	176	53	6
Greenwood, First	351	198	4
Hampton, First	141	59	
Hardy, First	131	50	
Harrison, Woodland Heights	128	63	
Hope, First	360	78	2
Hot Springs			
Harvey's Chapel	103	67	
Park Place	305	82	1
Hughes, First	174	83	
Jacksonville			
First	453	84	2
Second	151	51	
Jonesboro			
Friendly Hope	139	81	
Nettleton	295	155	3
Kingston, First	49	28	
Lavaca, First	345	150	
Little Rock			
Crystal Hill	133	45	
Life Line	468	112	
Martindale	101	57	
Magnolia, Central	650	232	5
Mammoth Spring, First	84	43	
Melbourne, Belview	167	73	
Monticello, Second	288	81	
Murfreesboro			
First	158	34	
Mt. Moriah	61		
North Little Rock			
Calvary	372	120	
Harmony	69	45	
Levy	382	114	1
Park Hill	989		1
Paragould			
Calvary	277	180	
First	443	82	
Pine Bluff			
Centennial	144	52	
Central	117	66	
South Side	580	70	
Watson Chapel	432	144	2
Rogers			
First	583	145	2
Immanuel	496	108	3
Russellville			
First	578	95	2
Second	137	71	4
Sheridan, First	174	44	
Springdale			
Caudle Avenue	153	76	
Elmdale	278	97	2
First	1504		14
Texarkana, Shiloh Memorial	204	92	
Van Buren, First	521	135	4
Vandervoort	64	41	
Ward, First	116	54	
West Helena	182	123	
Wooster, First	121	89	
Yellville, First	181	90	2

# A smile or two

The teacher had just given her second-grade pupils a lesson on magnets. Now came the question session, and she asked a little boy: "My name starts with an 'M' and I pick up things. What am I?" The boy replied instantly, "A mother."

### Trained secretaries

interested in employment at a Baptist institution are encouraged to apply to Secretaries, c/o Arkansas Baptist Newsmagazine, P.O. Box 552, Little Rock, Ark. 72203. Fringe benefits include free tuition and general fees for children's college education.

### Little Rock departures Dan Dipert Tours

#### Deluxe Motorcoach and Air

**Grand Ole Opry & Opryland**, March 31-April 2, and July 14-16, 3 days, \$150  
**Florida Funfest**, May 4-11, 8 days, \$385  
**Washington Cherry Blossom**, April 13-20, 8 days, \$385  
**"Fiesta Time in Old San Antonio"**, April 20-24, 5 days, \$225  
**Hawaiian Adventure**, June 6 or Aug. 1, 14 days, four islands, From D/FW, \$995; From Little Rock, \$1,089  
**New England Fall Foliage**, 8 Little Rock departures starting Sept. 20, 11 days, \$510

Price includes Everything But Noonday Lunch

Write or Call for Our 1978 Tour Catalogue or Detailed Itinerary on Any Above Tour, or See Your Travel Agent.

In Little Rock, Contact:

### Peters Travel Agency

2813 Kavanaugh 501/666-0242  
 Headquarters for complete travel advisory

NATURE'S  
 FOOD  
 CENTRES

EST.  
 1929

Get Acquainted Sale  
 of Natural Vitamins

2 for the price of 1

Yes! Buy one bottle of any natural vitamin at Nature Food Centres' special low price... GET 2ND BOTTLE (SAME SIZE) FREE. Join over one million thrifty American families who buy their vitamins direct from NFC. Every product fresh, pure, of the highest quality—delivered to your door and sold on a 30-day money-back guarantee. Mail coupon to get two for the price of one now!



Natural Vitamin E. Pure essence of d-Alpha Tocopheryl. Potent 400 I.U. preserved in tasteless gelatin capsules. 100/bottle. NOW \$3.99.

Natural Vitamin C. From most potent source: delicious Acerola berry! 5000% more concentrated than orange juice. 100/bottle. NOW \$3.50.

Stress-Plex. Combines B Complex with Vitamin C for proper balance of essential vitamins you may need if daily pressures are getting you down. 100/bottle. NOW \$3.99.

Formula TM. The same formula, same potency, and the same size as nationally advertised Squibb's Theragran-M but at a much lower price. 100/bottle. NOW \$3.50.

© 1978 NFC

EST. 1929

NATURE'S  
 FOOD  
 CENTRES

Dept. JRO28  
 One Nature's Way  
 Wilmington, Mass. 01887

Rush vitamins I've checked below under your 2 for the price of 1 special offer. There's no charge for shipping, and I'm covered by your 30-day money-back guarantee.

- E 400 I.U., #113230, 2 bottles for \$3.99
- C 300 Mg., #111802, 2 bottles for \$3.50
- Stress-Plex, #200321, 2 bottles for \$3.99
- Formula TM, #114268, 2 bottles for \$3.50

TOTAL AMOUNT ENCLOSED: \$ \_\_\_\_\_  
 Mass. residents add 5% tax

#### CATALOG SENT WITH ORDER!

Up to 50% SAVINGS from one of America's oldest, largest, and most trusted health food companies.

Check if you only wish Catalog.



PRINT NAME \_\_\_\_\_

ADDRESS \_\_\_\_\_

CITY \_\_\_\_\_

STATE \_\_\_\_\_

ZIP \_\_\_\_\_

3



## Bold Mission Thrust



Only prayer can do it!

Although the Annie Armstrong Easter Offering is a big, visible, measurable part of Bold Mission Thrust, it is not the biggest or most important part of the current emphasis on home missions. Prayer is.

other WMU and Brotherhood groups, and families will pray every day.

A poll of missions leaders marked up this list of prayer requests:

\*That funds and leadership will be available for a church in Middlebourne, West Virginia, where interest has been expressed. This is just one of 13 West Virginia counties needing a new Southern Baptist work — and —

\*That people will volunteer to help with Bold Mission projects in West Virginia. Need 50 Bible study fellowship sponsors, 12 churches to sponsor summer missions teams, six laymen's groups, 100 out-of-state groups to conduct Bible schools and start churches (Floyd Tidworth Jr., Missions Division Director, West Virginia).

\*That 26 congregations in Connecticut and Rhode Island can secure facilities of their own (Tom and Nancy Biles, home missionaries, Ledyard, Conn.).

\*That at least 2,000 people will offer themselves to serve as home missionaries (Warren Woolf, director, Division of Personnel, HMB).

\*That 600 pastors will answer the call to begin churches in counties that have no effective evangelical witness (Jack Redford, director, Department of Church Extension, HMB).

\*That every Southern Baptist, all 13,000,000, will participate by giving at least \$1 to the Annie Armstrong Easter Offering (Carolyn Weatherford, executive director, WMU, SBC).

\*That many of the 200,000 residents of East Side Manhattan will attend the Bible study in apartment 4-B, East 85th Street, led by Elmer and Jean Sizemore, that a new church can begin — and —

\*That Bold Mission Thrust can be made in Putnam and Sullivan Counties, New York and Warren and Hunterdon Counties, New Jersey — and —

\*That more community ministries can begin in Metropolitan New York Baptist Association, like the new one sponsored by Genesis Church in Georgia-King Village, Newark, N.J. (DeLane Ryalis, church extension director, New York Association).

\*That we have persons to respond for service among ethnic groups (Oscar Romo, director, Department of Language Missions, HMB).

\*That 10,000 Southern Baptists this year will do some sort of volunteer short-term missionary project (Don Hammonds, director, Special Missions Ministries, HMB).

\*That every church will issue an invitation for its people to be personally involved in home missions, and that many lives will be changed (Mrs. A. Harrison Gregory, president, WMU, SBC).

\*That the development of new black Southern Baptist churches increase, especially in communities where there are no churches, and for HMB-sponsored leadership training for these churches in an orientation program designed for black seminarians in SBC seminaries (Emmanuel McCall, director, Department of Cooperative Ministries with National Baptists, HMB).

\*That young couples would adopt infants with special needs from the Sellers Baptist Home and Adoption Center in New Orleans. These infants are biracial or have special physical problems (Paul Adkins, director, Department of Christian Social Ministries, HMB).

\*That money will be provided for ministry to the American Indians in northern Nevada, 1,500 Vietnamese in San Francisco, the Portuguese in central California. Leadership is needed for Latin congregations. That \$13,000 a year be available to provide tuition for young ethnic men enrolled in California Baptist College (Jack Combs, director, Language Missions, California).

\*That 750 people will commit themselves to serve in homeland Mission Service Corps assignments, and that a church or individual will be ready to sponsor each one (David Bunch, Mission Service Corps coordinator, HMB).

\*That more students at Gardner-Webb Baptist College in North Carolina will be willing to learn to assist deaf students attending the college; for the student revival team that witnesses to the deaf (Jerry Potter, director of Deaf Missions, North Carolina).

### Address change ????????

Two weeks before change of address send name label below and new address to:  
ARKANSAS BAPTIST NEWSMAGAZINE  
P.O. Box 552  
Little Rock, Ark. 72203

The \$13,000,000 goal of the Annie Armstrong Easter Offering can scarcely pay the bill for doubling the number of missionaries, or for enough mass media to reach every American. Yet, the goal for Bold Mission Thrust in home missions is to present the gospel to every American and to organize a congregation with his reach.

The Annie Armstrong Easter Offering will help, but only prayer can accomplish the goals of Bold Mission Thrust.

March 5-12 is a week for concentrated prayer for home missions. Pastors will be devoting part of church meetings to specific prayer for home missions, while Baptist Women, Baptist Young Women,