



Students Influence Today's Thinking

What part does the student play in the influences that mold our world today? There are times when we may feel that our only purpose is preparing for the future — that college is merely a bridge we must cross before we can really start "doing" something. Yet, most of the major revolutions throughout history have been led by college-age young people. It is during these years that we make the major decisions and set the principle patterns to be followed the rest of our lives.

We are now the kind of citizens we will be tomorrow. If we do not take an active stand in the campus community and in a local church, there is no reason to believe we will do differently simply by changing communities. If we do not exert any influence now, then a framed sheet of parchment is not going to give us that extra bit of courage. Without becoming belligerent, we must strive now to get behind those things that are important to us with the total force of our personalities.





Seniors

Patsy Burrows and **Johnny Williamson**, chairmen of Tiger Day activities, confer on their plans.



ARTHUR ALLEN, Stuttgart; Biology; Art Club, Biology Club, Pershing Rifles.

JIMMY ANDERSON, Hope; Biology; Biology Club, Dormitory Counselor, International Relations Club.

GERALD RHEY ATCHISON, Texarkana; History.

LARRY ATKINSON, Little Rock; Sociology.



DONALD AUSTIN, Erin, Tenn.; History; Band, Young Democrats, Transfer from Southern Baptist College.

NORMA BALLOU, Little Rock; Accounting; Phi Beta Lambda.

BARBARA BATCHELOR, Van Buren; Physical Education; Gamma Phi Social Club, Tennis Team, Tigerettes.

BEAU BEARD, Camden; Math; Alpha Omega Eta Social Club, Scabbard and Blade, Senior Class Vice-Pres.



WENDY BEARD, Camden; Elem. Ed.; SNEA, Student Senate Secretary, Gamma Phi Social Club.

LINDA BEENE, Hughes; Phys. Ed.; SNEA, PEM Club, WRA Beauty Candidate.



CLARENCE D. BENGE, Wichita, Kansas; Religion.

DAVID BLASE, Decatur, Texas; Religion; Ministerial Asso. Pres., Life Service Band, Christian Commission Union.

LINDA LOU BLASINGAME, North Little Rock; Accounting; Phi Beta Lambda, Tennis Team, WRA.

LARRY BOGAN, Fayetteville; Gen. Busn.

ROBERT BOLLS, JR., Santa Maria, Calif.; Bus. Admin.; Young Republicans.

SHELBY JEAN BOLTON, Little Rock; Organ; Diapason Club Pres., Musicians Guild Vice-Pres., OBC Choir.

JUDY BONNER, Memphis, Tenn.; Elem. Ed.; Gamma Phi Social Club, SNEA.

SANDRA BRANCH, Wynne; Elem. Ed.; SNEA, OBC Choir.

BARBARA BRANDT, Carlisle; Biology; Beta Beta Beta, Delta Kappa Delta Social Club, Scio Vita.

NANCY BROOKS, Rogers; English; SNEA, Bus. Mgr. of Ouachitonian, Ripples.

LINDA RUTH BROWN, Blytheville; Speech; Kappa Delta Phi, National Collegiate Players, Who's Who.

WILLIAM H. BUIE, New Bern, N.C.; Math; Sigma Gamma Sigma, Young Democrats, SNEA Vice-Pres.

WANDA BULLOCH, McGehee; Business; SNEA, Delta Kappa Delta Social Club, Phi Beta Lambda.

PATSY LYNN BURROUGHS, Hope; Speech, French, English; Alpha Chi, Who's Who, Student Senate 2nd Vice-Pres.

RHODA SHEMPERT CARDEN, Earle; Elem. Ed.; SNEA, YWA.

WALTER BRUCE CASH, Warren, Business; Sigma Alpha Sigma Social Club Vice-Pres., Junior Class Vice-Pres., Basketball.

LYNN CHAPMAN, Blytheville; Music; OBC Choir, Beta Beta Social Club, Blue Key National Honor Fraternity.

LAVERNE CHATMAN, Poplar Bluff, Mo.; Elem. Ed.; SNEA, BSU.

RICHARD L. CHATMAN, St. Louis, Mo.; B.A.; Ministerial Alliance, Ouachita Choir, C.C.U.

JERRY CHRISTIAN, Malvern; Biology.

MARIE CLARK, Pine Bluff; Sec. Ed.

ROBERT EARL CLARK, Independence, Mo.; Math and Sec. Ed.

JANE CLEMENTS, Morrilton; Psychology.

BEVERLY CALLEGLEY COAD, Little Rock; Voice; Alpha Chi, Opera Workshop, International Relations Club.

ROY T. COULTER, Hot Springs; Social Studies and Math; Student Senate Pres., Kappa Delta Pi, Who's Who.



CONNIE COX, Bernie, Mo.; Music Education; Delta Kappa Delta Social Club, OBC Choir, OBC Band.

SUE CROISANT, Muskogee, Okla.; Elem. Ed.; EEE Social Club, OBC Choir, Student National Education Assn.

MIKE DACUS, Hot Springs; Chemistry.

BETTY JUNE DAKE, Midland; Elem. Ed.; EEE Social Club, BSU Executive Council, Student National Education Assn.

WARREN DARDEN, Searcy; Business Admin; Rho Sigma Social Club, Phi Beta Lambda, Alpha Rho Tau.

FRED ROBERT DAVIDSON, Brown Springs; General Business.

JIM R. DAVIS, El Dorado; Religion; Pres. Ministerial Assn., Christian Commission Union.

RAY DAVIS, Lake Worth, Fla.; Political Science.

HANK DEMPSEY, El Dorado; Theory-Composition and Percussion; Stage Band, Ouachita Singers, Ouachita Concert Band.

RONALD DENNIE, Little Rock; Chemistry.

MARJORIE GAIL DORSEY, Little Rock; Elem. Ed.; Alpha Chi, Kappa Delta Pi, AIC Intercollegiate Band.

FRAN DRYER, Mountain Home; Secondary Ed.; Who's Who, Kappa Delta Pi, Outstanding Student Education Award, EEE Social Club.

DUDLEY LYNCH, Osceola; Religion.

DONALD DUREN, Hot Springs; Religion.

DORIS ANN EDWARDS, Judsonia; Medical Technology.

NANCY ELLEDGE, Arkadelphia; Home Ec; EEE Social Club, Colhecon.

WILLIAM KIME EUBANKS, Arkadelphia; Business Admin.

MICHAEL FEATHERSTON, Marked Tree; Political Science; Young Republican Club.

ROBERT FEATHERSTON, St. Louis, Mo.; Art.

DWIGHT FINE, Hopkins, Mo.; Political Science.

JAMES D. FOSHEE, Hot Springs; Phys. Ed.; Physical Education Club.

TONIA FRANCIS, Hot Springs; French; Kappa Delta Pi, ROTC Company Sponsor, Student National Education Assn.

WILLIAM FREEMAN, Hope; Biology; Blue Key, Biology Club, Pres. New Men's Dormitory.

LARRY GARDNER, Wynne; Biology and Chemistry; Who's Who, Pres. Alpha Chi, Vice Pres. Blue Key.





Seniors

Rudy Vallee? Maurice Chevalier? It may even be John Halbert serenading the military students and their dates.



DELBERT GARNER, Hot Springs; Physical Education; Basketball, Track.

DONALD JACK GILBERT, Texarkana; Religion, History, Government; Ministerial Association, Christian Commission Union, B.S.U.



NANCY GIVENS, Jacksonville, Fla.; Elementary Education; B.S.U. Council, EEE Social Club, Sigma Tau Delta.

MOLLY HELEN GOFORTH, Piggott; Sociology; Alpha Rho Tau, Christian Commission Union, Y.W.A.

BARRY GOSS, Morrilton; Religion.



GARY R. GRAY, Malvern; Chemistry; Ark. Collegiate Academy of Science, Chemistry Club, Sigma Alpha Sigma Social Club.

JACK GRAY, Harrisburg; Biology.

BOB GULLETT, North Little Rock; Business Administration; Alpha Omega Eta Social Club, Future Business Leaders of America, Young Democrats.



CARL NEAL GUTHRIE, Booneville; Religious Education; Ouachita Choir, Christian Commission Union, Ministerial Alliance.

JOHN E. HALBERT, St. Louis, Mo.; Psychology; Beta Beta Social Club, Student Senate, B.S.U. Council.

JIMMY HALL, Hamburg; Chemistry.

MARION HANNA, Fort Smith; Elementary Education; Ouachita Choir, Y.W.A., Student National Education Association.

BRENDA HARCROW, Warren; Voice; Upsilon Kappa Phi Social Club, Ouachita Singers, Homecoming Queen Candidate.

KAY HARDY, Crossett; Secretarial Sc. and Accounting; Phi Beta Lambda.

CHARLES HARGROVE, Harbor City, Calif.; Political Science.

EVA HARRELL, North Little Rock; Phys. Ed.; EEE Social Club, Honorable Mention in All-American Basketball, Tennis State Doubles Championship.



AUBREY HARRIS, Prattsville; Chemistry.

HAROLD HARRISON, Smackover; Music; Beta Beta Social Club, Student Senate Representative, OBC Singers and Choir.

G. MIKE HARRISON, Gering, Neb.; Religion; Pres., and Recording Secretary of Ministerial Assn.

SANDRA K. HARRISON, Memphis, Tenn.; Secretary Music Education; Transfer from Memphis State U.



BERTHA HARSTON, El Paso; Home Ec; Student National Education Assn., Colhecon.

CARROLL F. HARTSELL, Malvern; Math and Physics.



Seniors

JACKIE DENE HATLEY, Corning; Social Studies.



As the student's college career draws to a close, he begins once again to dream of the future. Pictured here is Larry Gardner, a senior from Wynne.



JERRY GENE HATLEY, Corning; Social Studies.
WAYNE HAVER, North Little Rock; Bus. Admin.; Track Team, Rho Sigma Social Club, ROTC Brigade Adjutant.
RUBY HAWTHORNE, Hot Springs; Biology; Pres., Christian Commission Union, Alpha Chi, Beta Beta Beta.
MARY FRANCIS HAYES, Little Rock; Home Ec; Gamma Phi Social Club.



BILL HEATON, Hot Springs; Phys. Ed.; Basketball Team, Track, Physical Education Club.
JO ANN HELLEN, Benton; Music; Musician's Guild, Opera Workshop, OBC Choir.
JUDY HENRY, Pine Bluff; Chemistry and Math; EEE Social Club, Pres., Sigma Gamma Sigma, Who's Who.
SUZANNE HIGGS, Carthage; Secretarial Sc.; Y.W.A., Phi Beta Lambda.



HARRIETT HIGH, Hope; Home Ec; Gamma Phi Social Club, Who's Who, Miss Home Economics.
DAVID HENRY HILL, Poplar Bluff, Mo.; Elem. Ed.; Pastor, Jessieville Bapt. Church, A. A. Degree from So. Bapt. College.
EDWIN HINKSON, North Little Rock; Secondary Ed.; Student National Ed. Assn., BSU Stewardship Chairman, Christian Citizenship Chairman.
CLYDE HOLLINGSHEAD, Arkadelphia; Accounting.



LEE HOLLOWAY, Arkadelphia; English; Sigma Tau Delta, Editor, Ouachita Signal 1962-1963, Who's Who.
THOMAS A. HOLLOWAY, Jones Mills; Bus. Admin.; Vice Pres., Phi Beta Lambda, Rho Sigma Social Club,
HERMAN HOMISHAK, Hot Springs; Phys. Ed.; Physical Education Club, Pershing Rifles.
JAMES HOPE, Fort Smith; Education; Rho Sigma Social Club, OBC Rifle Team, Student Senate.



SUE HORNE, Sparkman; Elem. Ed.; Treas. Gamma Phi Social Club, Kappa Delta Pi, Student National Education Assn.
GARY HOWARD, Sparkman; Math; Vice Pres. Sigma Gamma Sigma, Young Democrats, Student National Education Assn.
MARTHA JENNINGS HOWARD, Little Rock; English and French; Gamma Phi Social Club, Sigma Tau Delta, Student National Education Assn.
FLOYD HUGHES, Gurdon; Religion; Ministerial Assn.



JIM JACKSON, El Dorado; Phys. Ed.; Co-Captain Football Team, Advanced ROTC, Pershing Rifles.
PATRICIA JAMESON, Fort Smith; Music Education.
PATRICIA JOHNSON, Benton; Elem. Ed.; Student National Education Assn.; Christian Commission Union, International Relations Club.
WILLIAM LEE JOHNSON, Pine Bluff; Bus. Admin.; Alpha Omega Eta Social Club, Advanced ROTC, Phi Beta Lambda.



JUDY JOHNSTON, De Queen; Home Ec; Kappa Delta Pi, Colhecon, OBC Choir.

GARRY JONES, Pine Bluff; Biology; Sigma Alpha Sigma Social Club.

GEORGE JONES, Pine Bluff; Phys. Ed.; Sigma Alpha Sigma Social Club, Football Letterman, Honorable Mention All-AIC.

LEE ROY JOYNER, JR., Clarendon; Chemistry; Gamma Sigma Epsilon, ROTC Company Commander, Pershing Rifles.

HARRY T. KENNEDY, Little Rock; Psychology; Psychology Club, OBC Choir.

CAROLYN KING, Little Rock; Art; Who's Who, EEE Social Club, Pres., Alpha Rho Tau.

JOHN ROBERT KITCHENS, Pine Bluff; Phys. Ed.

JILL MAY LAWHON, Arkansas City; Elem. Ed.; EEE Social Club, Senior Senator, Student National Education Assn.

SHARON LENDERMAN, North Little Rock; History; International Relations Club, Sigma Tau Delta, Kappa Delta Pi.

DAVID LEWIS, Hope; Biology; Sigma Alpha Sigma Social Club, Biology Club.

JAMES S. LEWIS, Camden; Biology; OBC Choir, Biology Club.

LILLIE ANN LIMBERT, Weiner; Home Ec; Colhecon, Student National Education Assn., Young Democrats.

LEON LOWE, Blytheville; Speech.

GEORGE MCGILL, Hope; Accounting; Alpha Omega Eta Social Club.

FRANKLIN MARSHALL, Bauxite; Math.

LINDA MASHAW, Camden; English; Feature Editor of Signal, Sigma Tau Delta, International Relations Club.

STUEART MATLOCK, Dallas, Texas; Accounting.

KAY MILLER, Bauxite; Music; EEE Social Club.

REBECCA FULLER MITCHEL, Arkadelphia; French; Alpha Chi, Sigma Tau Delta, Kappa Delta Pi.

PHYLLIS MOLENCUPP, San Jose, Calif.; Social Science; Young Republican Club.

JIM MONINGER, Hot Springs; Phys. Ed. and Biology.

WANDA MOORE, Crossett; Home Ec; YWA, Upsilon Kappa Phi, Colhecon.

GLENN NICHOLS, Pine Bluff; Business.

JOE E. NIXON, Huttig; Biology; OBC Choir, Biology Club, Student National Education Assn. Vice Pres.

Seniors



"We've got this one cinched!" Carl Willis and Pat Hamilton discuss the game with a couple of other Ouschitonians.

JAN O'NEAL, Fort Smith; Elem. Ed.;
EEE Social Club.

MARY ANN OTWELL, Waldo; Phys.
Ed.; Student National Education Assn.,
State Tennis Champ, National Girls'
Basketball League All Star Team.

ELIZABETH PAINE, Lawton, Okla.;
Education; Alpha Chi, Kappa Delta Pi,
Pres., YWA.

NYLE PARMELEE, Gravette; Voice;
OBC Choir, Band, Opera Workshop.



SHIRLEY PASSMORE, Oxley; Home
Ec; Colhecon, OBC Choir.

BOBBY PATTERSON, Holcomb, Mo.;
French and Chemistry.

LOYD PEARCY, Norwalk, Calif.; Polit-
ical Science; Debate Squad, Signal
Editor and Bus. Mgr., Who's Who.



MARTHA PIERCE, Little Rock; Elem.
Ed.; Delta Kappa Delta Social Club,
Student National Education Assn.,
Women's Recreation Assn.

RITA LOY PRESLEY, Winfield, Mo.;
Psychology.



LARRY PUGH, Mansfield; Phys. Ed.;
Football, All-AIC in Baseball, Student
National Education Assn.



Seniors



ALAN RAMSEY, Lonoke; Psychology; Ouachitonian Staff, Swimming Team, Psychology Club.



DIAN RAY, Star City; Music; OBC Choir.
RICHARD JERRY RED, North Little Rock; Phys. Ed.; Alpha Omega Eta Social Club.



LARRY REIMAN, St. Louis, Mo., Business; Alpha Omega Eta Social Club.
GLYNDA RICHARDSON, Crossett; Political Science.
JIM RICHARDSON, Knobel; Phys. Ed.
REBECCA ROBERSON, El Dorado; Music; Student Senate, BSU Executive Council, OBC Choir.



ROY ROBERSON, El Dorado; Business Admin.
ROCKY ROBINSON, Malvern; Chemistry; Alpha Omega Eta Social Club, Chemistry Club, Biology Club.
JOY SAWYER, Fort Smith; Drama; Sigma Tau Delta, Ouachita Singers, National Collegiate Players.
TOM SAWYER, Waldron; Business Admin.; Rho Sigma Social Club, Blue Key, Phi Beta Lambda.



Smiling, **Jane Weber** proudly rides float in Homecoming parade as Gaylon Neal accompanies them along route.

CLIFF SCHAAF, JR., Ferguson, Mo.; Accounting; Sigma Alpha Sigma Social Club, Pershing Rifles, Scabbard and Blade.
 MICHAEL L. SCIFRES, Pine Bluff; Chemistry; Sigma Alpha Sigma Social Club, Blue Key, Who's Who.
 ELIZABETH ANN SELF, Holly Grove; Secretarial Sc.; YWA, Student National Education Assn., Phi Beta Lambda.
 JUNE SELF, Texarkana; Psychology.



RUTH SELLARS, Houston, Texas; Psychology and Sociology.
 JUANELLE SEIGLER, Cove; Chemistry; Upsilon Kappa Phi Social Club, Women's Recreation Assn., Chemistry Club.
 MARY SHOPTAW, Texarkana; Elem. Ed.; Student National Education Assn., Young Democrats.
 KAY MOORE SIMS, Hughes; Elem. Ed.; Rho Sigma Sweetheart, Gamma Phi Social Club, ROTC Honorary Cadet Lieutenant Colonel.



WAYNE SIMS, Crossett; Phys. Ed.; Student National Education Assn., Rho Sigma Social Club, Phys. Education Club.
 CHARLES SMITH, Warren; History.
 DAVID NEAL SMITH, Arkadelphia; Psychology.
 MARY E. SMITH, Little Rock; Accounting; Sec., Phi Beta Lambda, Gamma Phi Social Club, Academic Award.



STEWART E. SMITH, Camden; Business and Math; Pres., Senior Class, Sigma Alpha Sigma Social Club, Blue Key.
 CLYDE SNIDER, Camden; Music; OBC Band, Ouachita Singers, Who's Who.
 YVONNE SOLESBEE, Greenwood; Elem. and Phys. Ed.; Student National Education Assn., Sec., PEM Club, Women's Recreation Assn.
 DAVID S. SPILLERS, Kenai, Alaska; English.



JOHN HERSHEL SOUTH, Memphis, Tenn.; Music; Scabbard and Blade, Sigma Alpha Sigma Social Club, Pres, OBC Band.
 FRANKLIN D. SPANN, North Little Rock; Math; Pershing Rifles, Sigma Gamma Sigma Math Honor Society, OBC Choir.
 CALVIN STACKHOUSE, Hughes; Phys. Ed.; Physical Education Club, Track, Student National Education Assn.
 MANERVA JO STANFORD, Blytheville; Elem. Ed.; Kappa Delta Pi, Student National Education Assn.



JEAN AMARYLIS STEED, Gurdon; Math and French; Sec., Alpha Chi, Kappa Delta Pi, Sigma Gamma Sigma.
 PHIL STRATTON, Sparkman; Accounting; Sigma Alpha Sigma Social Club, Phi Beta Lambda, Young Republicans Club.
 GARY STEPHENS, Cut and Shoot, Texas; Phys. Ed.; Beta Beta Social Club, Track, Phys. Ed. Club.
 JANET STOGSDILL, Jonesboro; Art; Alpha Rho Tau, Student National Education Assn., Ouachitonian Beauty Contestant.





CLAUD ANN SUTTON, Hope; Elem. Ed.; EEE Social Club, Ouachita Singers, Student National Education Assn.
 DON H. TALLISON, Prattsville; Religion.
 GILBERT TAYLOR, Forrest City; Religion; Christian Commission Union, Ministerial Association.
 CHARLES A. THOMPSON, JR., Marvell; Education.



KAREN ANN THOMPSON, Memphis, Tenn.; Secretarial Sc.
 JERRY WAYNE THOMPSON, Smackover; Music; Sigma Alpha Sigma Social Club, OBC Band, Pershing Rifles.
 LOUISE THREET, Harrison; Elem. Ed.; Student National Education Assn., YWA, Christian Commission Union.
 CAROLYN TIMM, Little Rock; Home Ec; Sigma Tau Delta, Alpha Chi, Colhecon.



MARY LOU VAN DUYN, Stuttgart; Biology; Alpha Chi, Beta Beta Beta Honorary Biological Society, OBC Choir.
 THOMAS S. VAN DUYN, JR., Stuttgart; Music; OBC Choir, Ouachita Singers, Ark. Federation of Music Clubs winner.
 LEANN VIALA, Little Rock; Elem. Ed.; EEE Social Club, Pres., Assn. of Women Students, Treas., Soph, Jr., and Sr. Classes.
 DAVE VICK, Forth Smith; Business; Pres., Phi Beta Lambda, OBC Choir, OBC Band and Stage Band.



ELOISE WAHNETAH, Chicago, Ill.; Biology; OBC Band, Basketball, Biology Club.
 JOYCE WALDRUM, Talco, Texas; Secretarial Sc.; Phi Beta Lambda, Young Democrats, Student National Ed. Assn.
 MARCO WALKER, Walnut Ridge; English; Transfer from So. Bpt. College, Sigma Tau Delta, BSU.
 BOB WATKINS, Fort Worth, Texas; Religion; Alpha Omega Eta Social Club.



CAROLYN WAYMACK, Pine Bluff; Home Ec; Colhecon, Gamma Phi Social Club.
 BOB WEBB, Jonesboro; Religion.
 TOMMIE JO WEBB, Camden; Accounting; Gamma Phi Social Club, Phi Beta Lambda Business Fraternity.
 JANE ANN WEBER, Fort Smith; Elem. Ed.; Student National Education Assn., Young Democrats, Rho Sigma Sweetheart.



RICHARD WEHMEIR, Tipton, Mo.; Accounting.
 ALTON WEINER, Rison; Phys. Ed.; Phys. Ed. Club, Basketball.
 SAM WELCH, Arkadelphia; Math; Stage Band, Inter-collegiate Band, Alpha Omega Eta Social Club.
 STANLEY WHITLOW, Shreveport, La.; History.

Seniors

RICHARD WILHELM, Little Rock; Chemistry and Biology; Alpha Chi, Who's Who, Beta Beta Social Club.



WILLIAM LEON WILLHITE, Paris; Religion.
BETH McCLUNG WILLIAMS, Arkadelphia; Elementary Education.



ESTHER WILLIAMS, Donaldson; Business; Phi Beta Lambda, Student National Education Association, Association of Women Students.
DOLORES ANN WILLIAMS, Watseka, Ill.; Elementary Education; Young Democrats, Student National Education Association, YWA.
JANET WILLIAMS, Watseka, Ill.; English and French; Alpha Chi, Sigma Tau Delta, Kappa Delta Pi.



JOHN WILLIAMSON, Waldo; Math and Chemistry; Blue Key, Vice President Student Senate, Who's Who.
CARL L. WILLIS, Paragould; Political Science; Signal Editor, Beta Beta Social Club, Blue Key.
DOUGLAS WILLIS, Warren; Music; Transfer from Arkansas A&M, Ouachita Band.
JANET WILSON, Little Rock; Art; Who's Who, Alpha Rho Tau, EEE Social Club.



BILL WINGFIELD, Magnolia; Biology.
JOHN L. WOOD, Tyler, Tex.; Theory and Composition; Stage Band, Ouachita Singers, Ouachita Concert Band.
BUDDY WORTHINGTON, Shreveport, La.; Accounting; Vice President BSU, Student Senate, Beta Beta Social Club.
SUE WRIGHT, Arkadelphia; Home Economics.



CAROLYN YARBROUGH, Hope; Biology; Gamma Phi Social Club, Sigma Tau Delta, Scio Vita Biology Club.
CARYL JOY YOUNG, Hope; English and French; Cheerleader, Alpha Chi, Kappa Delta Pi.
TERRY YOUNG, El Dorado; Business.
MARY NELL ZACHRY, Ben Lomond; English; Student National Education Association, BSU.



Juniors



Ken Carpenter moves from O. C. Bailey to the new Northwest Hall which opened for occupation the middle of March.



Virginia Andrews Searcy
 Joyce Ann Arnold Nashville
 Jack Auten Judsonia
 Bill Baker Norwalk, Calif.
 James Baker Arkadelphia

Julie Barrett Little Rock
 Van Barrett Ferguson, Mo.
 Judy Batson Searcy
 Tony Berry Walnut Ridge
 David Betts Ferguson, Mo.

Jerry Bibb Harrison
 David Robert Blaylock Nimrod
 Jim Bledsoe Stuttgart
 John Blount Batesville
 Harvey Booth Flint, Mich.

Rita Bradley Morrilton
 Ann Brogdon McCrory
 Paula Brown Lonoke
 Martha Bull Texarkana
 Marilyn Burns Oroville, Calif.

Gordon Wayne Cagle Arkadelphia
 James Caillouet Heber Springs
 Raymond Caldwell Benton
 Bobbi Camp Jacksonville, Fla.
 Darrell Capelle Van Buren

Ken Carpenter Malvern
 Sharon Carperter Pine Bluff
 John M. Carter Crossett
 Melissa Ann Carter Springdale
 Barbara Caston Hope

Diane Cato ----- Little Rock
 Eddie Chapman ----- Hickory Ridge
 Mary Chenault ----- Benton
 Marilyn Childers ----- Arkadelphia
 Paul Cline ----- Shreveport, La.



Danney Coker ---- North Little Rock
 Kay Coclasure ----- Lonoke
 Jim Conner ----- Arkadelphia
 Jo Ann Conner ----- Pine Bluff
 Gail Cooper ----- Heber Springs



Michael Cosgrove ---- Shreveport, La.
 Ed Coulter ----- Hot Springs
 Norma Cox ----- Barnett, Mo.
 Raymond M. Crotts ----- Wynne
 Barry Crow ----- Camden



Dan Crowder ----- Columbia, Ky.
 Jimmy Crowder ----- Malvern
 Jean Crumby ----- Elaine
 Judy Crumby ----- Magnet Cove
 Bill Curp ----- Cowgill, Mo.



Brenda Sue Dale ----- Fisher
 Joe Davis ----- Arkadelphia
 Linda Marie Davis -- Woodbridge, Va.
 Bill Dawson ----- Alton, Ill.



Kelly James Dempsey ---- Fort Smith
 Nancee Dickson ---- Memphis, Tenn.
 Judy Dotson ----- Van Buren
 Barbara Dutton ----- Norman
 Kenneth Edmonson -- Memphis, Tenn.

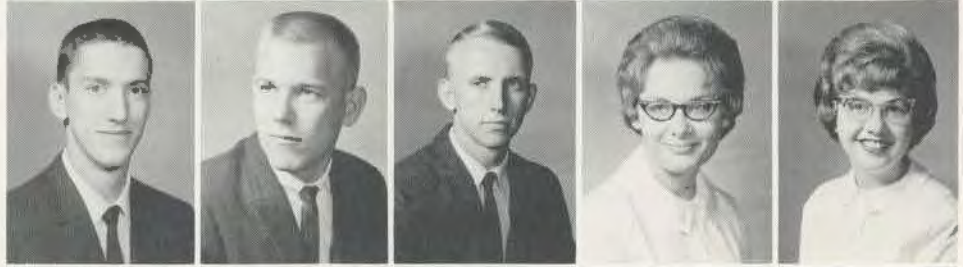


Ann Ellis ----- Jacksonville
 Harold Ellis ----- Pine Bluff
 Roy Thomas Elder ----- Nashville
 Betty Emanuel ----- Camden
 Larry M. Evans ---- Hornersville, Mo.

Marcus Everett Paris, Tex.
 Jay T. Fickle Hot Springs
 Sharon Fielding Hope
 Michael Fisher .. Stone Mountain, Ga.
 James Flannagan Hughes



Joe Franz Thayer, Mo.
 Paul Fray North Little Rock
 Paul Frazier Waldron
 Jessie Gifford Leola
 Lynda Ruth Goff Biggers



Charles L. Glidewell Arkadelphia
 Wanda Gale Gray Texarkana
 Lilian Greathouse Cherryville, Mo.
 George Douglas Green, Jr. .. Sparkman
 Sarah Griffin Memphis, Tenn.



Excitement of Ouachita's victory over Henderson continued after the game at the Hootanany sponsored by the Junior Class. Here, the Watchmen and the Hannaberry Singers combine efforts.

Peggy Gullage Jackson, Miss.
 John Gustavus Tupelo
 Richard Guthrie Arkadelphia
 John Henry Hall Forrest City
 Harold G. Hambrice Waldo



Clinton E. Harper Atlanta, Tex.
 Don Harper Littlefield, Tex.
 Charlie Jean Harris Blytheville
 Sue Haynes Fort Smith
 John Paul Hefley Lead Hill



Juniors



Margo Hicks ----- Mena
 Judy Hill ----- Heber Springs
 Vida Hill ----- Batesville
 David Hinkson ----- North Little Rock
 Deana Hodgins ----- Mexico, Mo.



Linda Hollis ----- Little Rock
 Kay Howard ----- Holcomb, Mo.
 Jerry Hubbard ----- Senatobia, Miss.
 Mary Ann Hulme ----- Holden, Mo.
 Earlece Humphries ----- Little Rock



Judith Ann Jackson ----- Waldo
 Ben Johnson ----- West Helena
 Jerry Scott Johnson ----- Beebe
 Bruce Jones ----- Oil Trough
 Robert M. Jones ----- Little Rock



LaFran Justice ----- Pine Bluff
 Mike Keller ----- Texarkana
 Gloria King ----- Hot Springs
 Daisy Chu Ko ----- Memphis, Tenn.
 James R. Lawrence ----- Florissant, Mo.



Cathy Layman ----- Springdale
 Ralph Libhart ----- Cuba, Mo.
 Mrs. Thelma Libhart ----- Cuba, Mo.
 Wheeler Lilley ----- Shreveport, La.
 Danny Lowe ----- Blytheville

Katy McCaig ----- Portland
 Emily McCarley ----- Pine Bluff
 Frank McFerrin ----- Fouke
 Wayne McGraw ----- Jacksonville, Fla.
 Bobbie Lynn Mackey ----- Arkadelphia





Michael Makosholo - Gatooma, So. Rho.
 Fay Mathews ----- Van Buren
 Kay Matthews ----- Van Buren
 William Mattox ---- Memphis, Tenn.

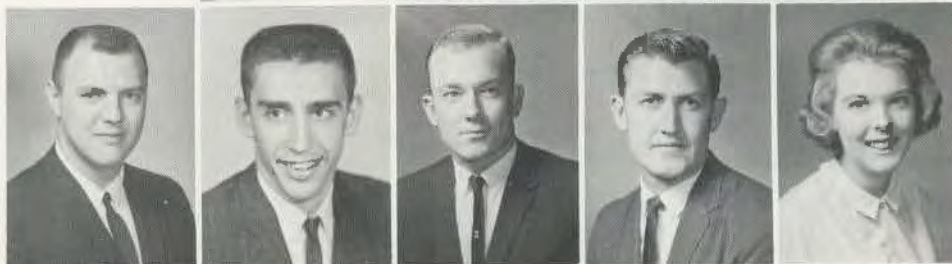
Robert Henry May ---- Sylvan Hills
 Ellis Melton ----- North Little Rock
 J. B. Millaway ----- Texarkana
 Andrea Miller ---- Texarkana, Texas

Juniors

Reba Miller ----- Evansdale, Iowa
 David Moore ----- St. Louis, Mo.
 Jim Moody ----- Ft. Smith
 Marrian Leon Morgan - Owensville, Mo.



Arthur Morris -- Mountain Grove, Mo.
 Bill Neal ----- Du Quoin, Ill.
 Charles Nix ----- Benton
 Carel Norman ----- North Little Rock
 Celia Nourse ----- Texarkana, Texas



David Odum ----- Port St. Joe, Fla.
 Gail O'Kelly ----- Benton
 Linda Jones Oliver ----- Waldron
 Vicky Osburn ----- Ft. Smith
 Don Overstreet ----- Bentonville



Johnny Owen ----- Pine Bluff
 Virginia Paslay ----- Bauxite
 James R. Paxton ----- Arkadelphia
 Jo Anne Pearman ----- Almyra
 Cherry Pemberton ----- Little Rock





Bill Bule gives an energetic swing as he and Paula Brown team up against Ann Routon and Stewart Smith in a game of ping-pong.



Robert Pierce ----- Lawton, Okla.
 Ann Pollard ----- Blytheville
 Nancy Porter ----- Arkadelphia
 Jane Pouzar ----- Little Rock
 Bobby Power ----- Nashville

David Prior ----- Newport News, Va.
 Dan Pritchard ----- Burlington, Iowa
 Don Puckett ----- Pine Bluff
 Larry Puckett ----- Ft. Smith
 Sherri Pugh ----- Waldron

Beth Reeder ----- Nashville
 Eddie Rettstatt -- Canoga Park, Calif.
 Carroll Ricketts ----- Smackover
 John Riggs, Jr. - W. Palm Beach, Fla.
 Doyno Robertson -- Clarksville, Tenn.

Paul Rogers ----- Carlisle
 Ann Routon ----- Baton Rouge, La.
 Clarence E. Rowe, Jr. -- Hot Springs
 Nancy Salter ----- Dermott
 Neal Sanders, Jr. ----- Pine Bluff

Edmund B. Scarborough - Belle Haven,
 Va.
 Robert W. Schroeder, Jr. -- Pine Bluff
 Max Setliff ----- Magnolia
 Lon Sheridan ----- Hot Springs
 Tommy Smart ----- Camden



Dee Smith ----- Annandale, Va.
 Dorothy Smith ----- Hope
 Tommy Smith ----- Kingfisher, Okla.
 Wilma Smith ----- Pine Bluff

Juniors

Billy Joe South ----- Memphis, Tenn.
 James C. Southerland ----- Little Rock
 Gene Spearman ----- Dallas, Texas
 Eugene W. Speed ----- Pasco, Wash.



Charles W. Stanton - Lake Worth, Fla.
 Brenda Starks ----- Carthage
 George W. Stevenson --- Tulsa, Okla.
 Charlotte Stewart ----- Hot Springs



Linda Stilger ----- Dayton, Ohio
 Kay Stone ----- Wabaseka
 Ruth Stroope ----- Arkadelphia
 Mrs. Cecil Sutley ----- Arkadelphia



Marie Sutley ----- Arkadelphia
 Sherry Tabor ----- Sparkman
 Darlene Tate ----- Oran, Mo.
 Mary Ann Thornton ----- Little Rock



Betty Treece ----- Arkadelphia
 Beverly Tucker ----- El Dorado
 Billy Walker ----- Walnut Ridge



Shiela Waterman -- Lake Charles, La.
 Donald Printest Watkins ---- Warren
 Gilbert Dale Welch ---- St. Louis, Mo.



Carol Wenzel ---- North Little Rock
 Dorris Ann Westerman ----- Weiner
 Raymond H. Whetstone ---- Sunrise
 Beach, Mo.



Representing the Junior Class in Homecoming Ceremonies, Diane Cato rides the float entitled "Snuff the Mountaineers." We did, too.

Merriam Wheeler ----- Clarendon
 Eugene Whitlow -- Alamogordo, N.M.
 Thomas Wilson ----- Camden



Margaret Wingfield ---- Arkadelphia
 William Wilkie ----- Stephens
 Dale Ann Wood ----- Frederick, Md.
 Phil Wright ----- North Little Rock





Jerri Alice Fields

November 30, 1943

October 28, 1963

"Crossing The Bar"

Sunset and evening star,
And one clear call for me!
And may there be no moaning of the
bar,
When I put out to sea,
But such a tide as moving seems
asleep,
Too full for sound and foam,
When that which drew from out the
boundless deep.
Turns again home.
Twilight and evening bell
And after that the dark..
And may there be no sadness of farewell,
When I embark;
For tho' from out our bourne of Time
And Place
The flood may bear me far,
I hope to see my Pilot face to face
When I have crost the bar.

Tennyson

In Memoriam

Robert F. Lambert, III

June 23, 1944

February 16, 1964

