

Ouachita Baptist University

Scholarly Commons @ Ouachita

OBU Yearbooks: The Ouachitonian

University Archives

1947

The Ouachitonian 1947

Ouachitonian Staff

Ouachita Baptist University

Follow this and additional works at: <https://scholarlycommons.obu.edu/yearbooks>



Part of the [Higher Education Commons](#), [Organizational Communication Commons](#), and the [Public Relations and Advertising Commons](#)

Recommended Citation

Ouachitonian Staff, "The Ouachitonian 1947" (1947). *OBU Yearbooks: The Ouachitonian*. 47.
<https://scholarlycommons.obu.edu/yearbooks/47>

This Book is brought to you for free and open access by the University Archives at Scholarly Commons @ Ouachita. It has been accepted for inclusion in OBU Yearbooks: The Ouachitonian by an authorized administrator of Scholarly Commons @ Ouachita. For more information, please contact mortensona@obu.edu.

OUACHITONIAN

FOR

1947





mary beth rudolph, editor
bill keltner, business mgr.

Present

THE

OUACHITONIAN

1947



Annual Yearbook
Published by the students
of Ouachita Baptist College,
Arkadelphia, Ark.

President's Message
OUACHITA COLLEGE
ARKADELPHIA, ARK

Dear Students:

Everyone of us needs the true Ouachita

T - I G E R S P I R I T.

I - n all things worthwhile, be peppy.

G - reat success comes with the tiger spirit.

E - ducation is to help one render better service.

R - eligion is seen more in walk than in talk.

S - elf-denial first, self-development will follow.

P - ray daily. Prayer changes things.

I - ndecision and procrastination are robbers; shun them.

R - emove the cause and you remove the effect.

I - t costs more to get even than to get ahead.

T - ell the truth. It pays here and hereafter.

Sincerely,

J. R. Grant

J. R. Grant
President

JRG:bm







FOREWORD

Braving rain and sun, and numberless coats of paint, the marble tiger still stands on the lawn before the Main Building. And we have no doubt that the tiger will continue to stand there for many more years.

The tiger is ferocious in appearance, but we have somehow grown to think of it as a guardian, as an ideal, as the intangible essence of the Ouachita spirit.

We believe that the tiger is ours, to hold in our hearts forever, and in that belief the 1947 Ouachitonian Staff presents to you the Tiger - - the Spirit of Ouachita.



DEDICATION



Because she has given a part of her life to us, because she is not only a faculty member, but an educator and a friend to all students, we dedicate this volume of the *Ouachitonian* to

Gene Henry Rudolph

*Associate Professor of Humanities
(Speech)*



CONTENTS

CAMPUS

CLASSES

ATHLETICS

ACTIVITIES



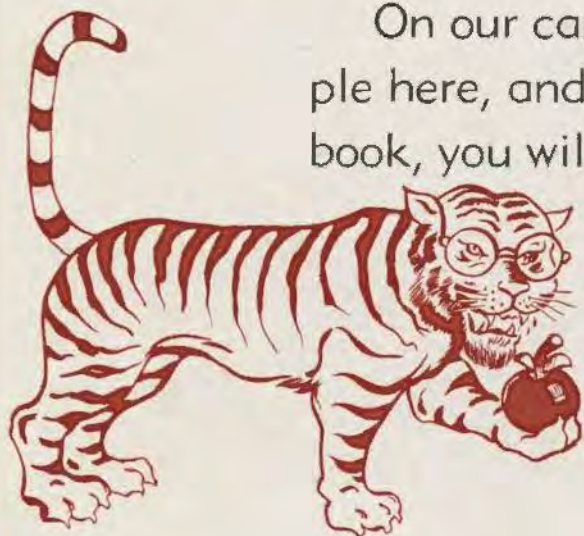




CAMPUS...

The spirit of Ouachita cannot be seen, but the trappings of that spirit are the things we can see.

On our campus, in the people here, and, we hope, in this book, you will find this spirit.





Cone-Bottoms Hall



Mitchell Hall

Little Theater



Dining Hall



Wallis Hall



Men's Dormitory



Gymnasium



Field House

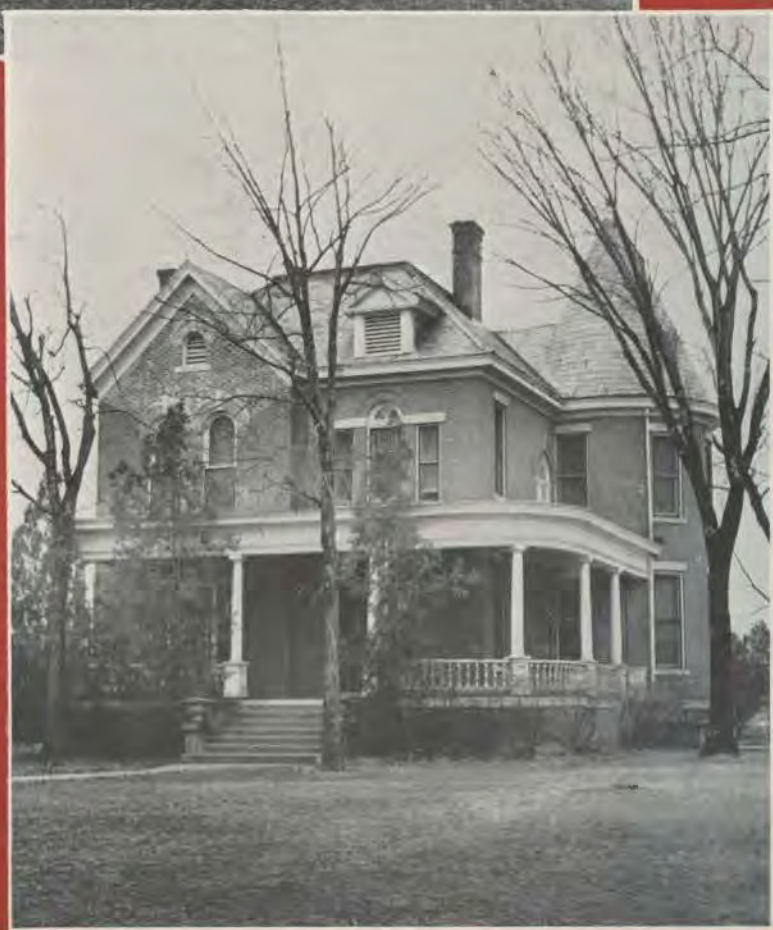
Home
Economics
Cottage



Bookstore



Student
Center



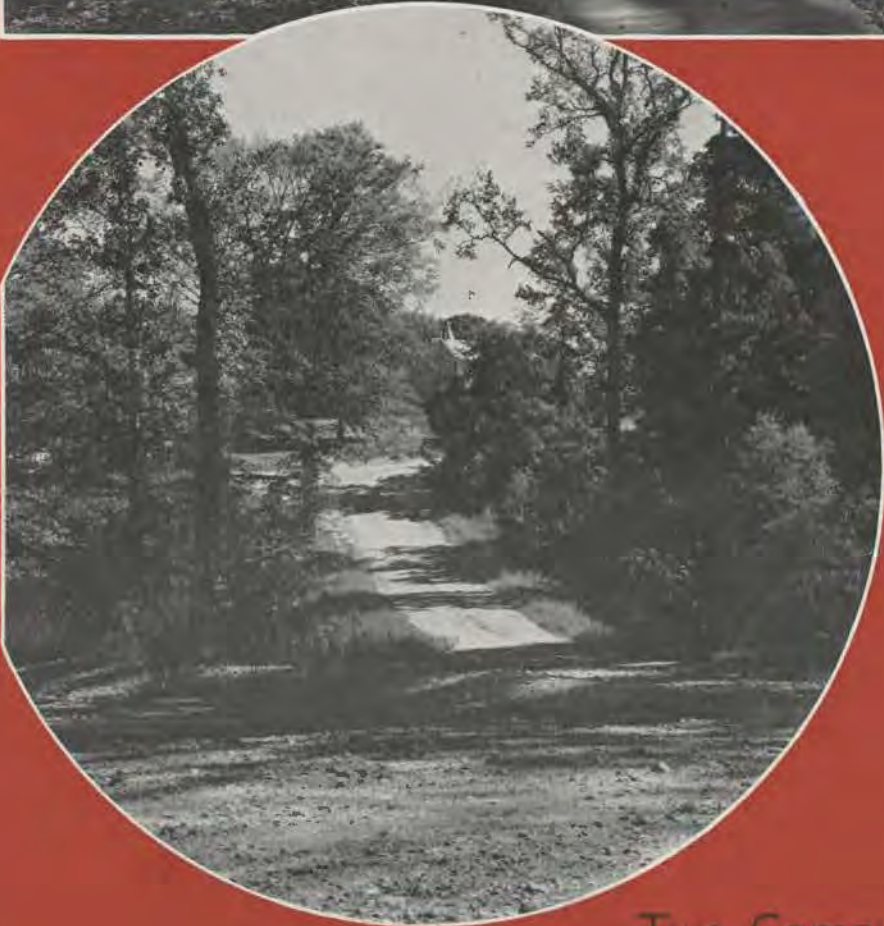
President's
Home



West Hall



Construction On New Buildings



Two Campus Scenes

OUACHITA ENDOWMENT CAMPAIGN



DR. OTTO WHITTINGTON,
Director of the Campaign

Building now under construction as it will look when completed.



NEW DORMITORY BUILDING
FOR
OUACHITA COLLEGE
ARKANSAS

KANSAS BAPTIST HISTORICAL SOCIETY



ALMIGHTY GOD MERCIFUL
 FATHER OF ALL MANKIND
 HEAR MY DYING PETITION
 INSPIRE THOSE WHO SHALL
 LIVE IN THE WORLD TO SEE THE FUTILITY AND TRAGEDY OF
 WAR. FILL THEIR HEARTS WITH LOVE OF THEE AND
 THEIR FELOWMEN GRANT UNTO THEM COURAGE AND
 WISDOM TO GUIDE OUR WORLD INTO A LASTING PEACE.
 MAY MY SUPREME
 SACRIFICE HELP THOSE
 WHO SHALL COME AFTER
 TO REMEMBER THE
 TERRIBLE COST OF WAR
 AND THEN I SHALL NOT
 HAVE DIED IN VAIN
 BUT IN THE SERVICE
 OF THY SON THE PRINCE
 OF PEACE ☸ AMEN

IN GRATEFUL MEMORY
 OF THE FOLLOWING

EDWIN WADLEY SMITH
 RALPH WILLIAM STOCKEMER
 DAN JOSEPH MATHEWS
 RALPH MANN
 ANDREW C. THIGPEN
 GASTON DON SHOENER
 JOHN MILTON HALL
 CURTICE BARKIN
 PAUL BRANTLEY LAMBERT
 JAMES FLANAGIN TURNER
 MERRILL COLE
 WILLIAM REED PARSONS JR.
 THOMAS MARION POOL
 ROBERT ELMO CHANEY

IN GRATEFUL MEMORY
 OF THE FOLLOWING

RALPH I. CROSWELL
 JOHN FRANKLIN REED JR.
 JAROLD DUKE
 JOE SIMPSON
 WILLIAM CONE STELL
 GEORGE SHELL GRANT
 LEO WINFRED MATTOX
 PAUL BEVERLY GARRETT
 RUFUS WALLACE ROBINSON
 DAVID NEIL MATLOCK
 THOMAS REAGAN
 EDWARD ECIL DOUTHIT
 CLYDE VERNON MCCALMAN
 FRANCIS ALLEN NORTON



ERECTED BY THE CLASS OF 1946

FACULTY





EDGAR WILLIAM BASS, M. S.
Associate Professor of Social Science (Economics and Business Administration)
B.S., 1923, Oklahoma A. & M. College; M.A., 1942, Oklahoma A. & M. College.



EVELYN BULLOCH BOWDEN, M.M.
Assistant Professor of Fine Arts (Piano, Organ, and Theory)
Diploma in Piano and Organ, 1930. B.M., 1931; B.A., 1932, Ouachita College; Julliard School of Music; Private instruction with James Friskin. Theory with Guy Maier and Maybelle Glenn, 1934. M.M., American Conservatory, Chicago.

MRS. ROBERT A. COWAN, B.A.
Director of Physical Education and Health for women.
B.A., Henderson-Brown College, 1929; Attended Curry School of Speech and Physical Education in summers at Waxahachie, Texas, Asheville, North Carolina, and Boston, Massachusetts. Four summers of graduate work in Physical Education in Iowa State University.

ROBERT A. COWAN, M.A.
Director of Physical Education and Athletics for men.
B.S., 1921, Ouachita College. M.A. in Physical Education, Iowa State University. Attended Coaching Schools at Louisiana State University, University of Southern California, Iowa State University.

MARTIN BURNS, B.M.E.
Instructor in music.
B.M.E., 1946, Ouachita College.





FRANCES McMILLAN CRAWFORD, B.A.
Registrar.
B.A., B.M., 1918, Ouachita College; one summer's study at Columbia University; one term's graduate study at Peabody College.



RALPH CUSTER DAILY, Ph.D.
Professor of History and Political Science.
B.A., 1923, Ewing College; M.A., 1924, University of Nebraska; Ph.D., 1929, Indiana University.

MRS. N. W. DENTY, B.S.
Dietitian and assistant in Home Economics.
B.S., 1920, Columbia University.

MRS. FRANK DESHONG, B. M.
Assistant Dean of Women.
B.M., 1909, Ouachita College.

CLAUDE L. DURRETT, B.A.
Instructor in salesmanship.
B.A., 1904, Ouachita College.





S. W. EUBANKS, D.D.
 Professor of Religious Education,
 D.D., Southern Baptist Seminary,
 Louisville, Kentucky.



JUANITA FORD, B.S.
 Associate Professor of Science
 (Home Economics).
 B.S., 1936, East Texas State
 Teachers' College; Graduate
 study University of Wisconsin,
 1941. Graduate Study, Universi-
 ty of Texas, 1944.

COL. ROBERT T. FOSTER
Infantry Reserve, U.S.A.
 Professor of Military Science and
 Tactics.

LUTHER R. FRANKLIN, M.A.
 Assistant Professor of Fine Arts
 (Painting, drawing, design, and
 theory).
 B.S. in Education, University of
 Missouri, 1944. Graduate study,
 Iowa State University, summer,
 1945. M.A., University of Mis-
 souri, 1946.

MRS. ELLEN HALL, B.A.
 Assistant professor of Humanities
 (Speech).
 B.A., 1913, Ouachita College;
 Special Study, Pasadena School
 of the Theater, summer, 1945.





FAY HOLIMAN, M.A.
Assistant Professor of Humanities (English).
B.A., Ouachita College, 1925; M.A., University of Texas, 1935.
B.M., 1929, Chicago Musical College. Graduate study, Columbia University, summer, 1939.



CHARLES FLETCHER HOLLAND, B.A.
Instructor in Biology.
B.A., 1946, Ouachita College.

HELEN LYON, M.A.
Assistant Professor of Fine Arts (Music).
B.A., 1934, Mary-Hardin Baylor; M.A., 1943, George Peabody College; Graduate study, University of Southern California, Louisiana State University, and Institute of Musical Art, New York City.



LIVINGSTON HARVEY MITCHELL, LL.D.

Director of the Conservatory.
Piano student of Adolph Koelling, Chicago Music College; Emil Leibling, Chicago; Maurice Moskowsky, Paris; Frank Mannheimer and Tobias Matthay Piano School, London, summer terms 1928, 1929, 1931; Active member of American Matthay Association. LL.D., 1945, Ouachita College.





JOSEPH RYLAND MUNDIE, Ph.D.
 Professor of Science (Biology).
 B.S., 1925, University of Virginia;
 M.S., 1925, University of Virginia;
 Ph.D., 1927, University of Virginia.

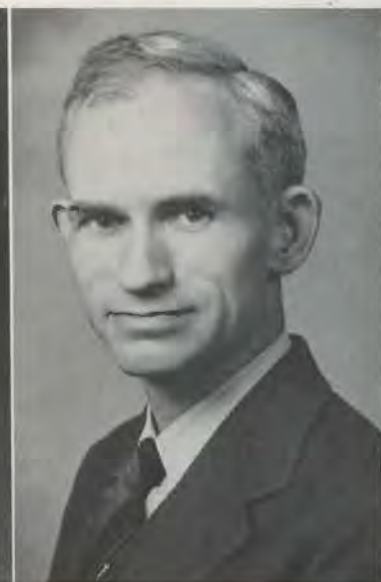


ALBERT LeROY MYERS, M.S.
 Associate Professor of Science
 (Chemistry).
 B.S., 1937, Carson-Newman College;
 M.S., 1939, University of Georgia;
 two years' additional study toward Ph.D., 1939-41, Purdue University.

MAJOR JOHN A. McCONNELL,
Infantry Reserve, U.S.A.
 Assistant Professor of Military
 Science and Tactics.

LORA C. NESBITT, B.A.
 Assistant Librarian.
 B.A., 1946, Ouachita College;
 summer study University of Illinois, 1946.

RICHARD CAMPBELL PETTIGREW, Ph.D.
 Professor of Humanities (English).
 B.A., 1925, Furman University;
 M.A., 1926, University of North Carolina;
 Ph.D., 1930, Duke University.





LEONARD PRICE, B.A.
Business Manager.
B.A., 1939, Ouachita College.



MRS. R. C. PETTIGREW, M.A.
Assistant Librarian.
B.A., 1933, Catawba College. M.
A., University of North Carolina.

EUGENE ALMARINE PROVINE, Ph.D.
Professor of Science (Chemistry).
B.A., 1923, Mississippi College;
M.S., 1935, Louisiana State Uni-
versity. Ph.D., 1936, Ohio State
University.

VIRGINIA QUEEN, B.A., B.M.
B.A., B.M., 1944, Ouachita Col-
lege. One summer's study at
American Conservatory, Chicago.

DONALD MONFORT SEWARD, Ph.D.
Professor of Science (Mathemat-
ics and Physics).
B.A., 1930, J. B. Stetson Univer-
sity; M.A., 1932, University of
North Carolina. Ph.D., 1941,
Duke University.





MORENE DUMAS SMITH, A.B., B.L.S.
 Librarian.
 A.B., 1926, Ouachita College;
 summer study Columbia University
 School of Library Science,
 1927; B.L.S., 1932, University of
 Illinois.

ROBERT WARREN SMITH, B.A.
 Athletic Coach and Instructor of
 Physical Education.
 B.A., 1939, Ouachita College.

JAMES CLEVELAND STEWART, M.A.
 Associate Professor of Social Science
 (Education).
 B.A., 1926, M.A., 1927, Baylor University;
 one summer's study at
 University of Arkansas.

MRS. JAMES CLEVELAND STEWART
 Matron Men's Dormitory.
 Diploma in Expression, 1904,
 Ouachita College.

DALE TAYLOR, B.A.
 Accountant and Assistant Business
 Manager.
 B.A., Ouachita College, 1946.





LOWELL T. WALLACE, Ph.D.
Associate Professor of Social Sciences (Religious Education).
B.A., 1918, William Jewell College; M.A., 1924, Mercer University; Th.M., 1921, Th.D., 1923 Southwestern Baptist Theological Seminary, Ph.D., University of DuBuque, 1924.



ALMA MAE WARD, B.A.
Instructor in English.
B.A., 1946, Ouachita College; one summer's study at Columbia University, 1946.

MRS. H. L. WINBURN, B.A.
Dean of Women.
B.A., 1899, Lambeth College, Jackson, Tennessee.

AUBREY MILTON WITHERINGTON, Ph.D.
Professor of Social Sciences (Education).
B.A., 1923, Union University; M.A., 1928, Ph.D. 1934, George Peabody College for Teachers.

ANN WOLLERMAN, M.R.E.
Assistant Professor of Social Science (Economics and Business Administration).
B.A., 1940, Ouachita College; M.R.E., 1942, Southwestern Baptist Theological Seminary.





MAUDE WRIGHT, M.M.

Assistant Professor of Fine Arts
(Piano, Theory).
B.A., 1928, Ouachita College; M.
S., 1936, Louisiana State Univer-
sity; M.A., 1937, Louisiana State
University.



FRANCES YEAGER, B.S.

Assistant Dietician.
B.S., 1946, Ouachita College.

ESTHER DIXON, B.A.

Instructor in Business Adminis-
tration.
B.A., 1944, Ouachita College.

MAXIE CLEER, M.S.M.

Director of the Choir.
B.A., Wheaton College. M.S.M.,
Southwestern Baptist Seminary.

GEORGE BLACKMON, M.A.
Instructor in Political Science
and Debate Coach.





MRS. UNA BUCK
Bookstore



MRS. BESS HULLENDER
Bookstore

MRS. MARIE CRITTENDEN
Bookstore

E. L. BREWSTER
Bookstore

MRS. DOROTHY E. WILLIAMS, B.A.
Instructor in Music.
B.A., University of Wisconsin.





HOLLIS BAILEY TODD, B.A., B.D.
Assistant Professor of Humanities
(Speech).
B.A., 1940, Mississippi College;
B. D., 1945, New Orleans Theological
Seminary; graduate study,
Louisiana State University.



JULIA McAMIS TODD, B.A.
Instructor in Humanities
(Speech).
B.A., 1940, Mississippi College;
graduate study, New Orleans
Theological Seminary and Louisiana
State University.

SIDNEY MASSEY, B.A.
Instructor in History.
B.A., 1939, Mississippi College.



MRS DELLA EAKER, R.N.
School Nurse.



RUBY LOIS GARDNER, B.A.
Instructor in Foreign Languages.
B.A., 1932, College of the Ozarks;
Special study 1936, University of
Texas, University of Oklahoma,
1940. Translator of French and
Spanish, U. S. Office of Censorship,
San Antonio, Tex., 1942-43.





1. Smile now, everybody
2. Don't forget the nickel, Doc
3. Where's the bond?
4. Um, delicious
5. Nice subject, Art
6. With a song in her heart
7. Friendship
8. Nice chat, boys?
9. Would you like to recite?
10. Ouachita's Ann Wollerman
11. "Now, when I was a lad in school--"
12. The wolf and the lamb
13. Two men of art.
14. Waiting for Jimmy
15. Three great men

1. Back row in balcony, please
2. Registration
3. Patience personified!
4. Almost there
5. Next!
6. Formality begins
7. Fashion review of this year
8. Aw, come on over
9. Faculty reception
10. Business is booming
11. This slays me
12. Now, where is Wylie.
13. The worst is over
14. More lines?



Winners in the Snapshot Contest



First Place

Subjects—Betty Jo Patterson and Hollis Haley
Submitted by Mary Kay Hagan

Second Place

Subject—Pat Delaney
Submitted by Reece Stiles

Third Place

Subjects—Betty Nelson and Marvin Tate
Submitted by Margrete Horne

Fourth Place

Subjects—Ruth Boxley and Harry Ashcraft
Submitted by Harry Ashcraft

Fifth Place

Subject—Aerial view of Cone-Bottoms
Submitted by Norvin Jones

1. Reciprocity
2. I love you, Wylie,
I do
3. Mass production
smiles
4. Evicted!
5. Who said men
were scarce?
6. One, two, three,
hip!
7. Result of over-
studying
8. Hey, where's
Gert?
9. Saturday morn-
ing
10. Goy
11. Hi-Hat formal
12. The bright things
of the campus





1



2



3



4



5



6



7



8



9



10



11



12



13

1. Care-ful
2. Charlie and Bergen, alias Emil and A. L.
3. Wonder what happened
4. You figure this out
5. Red Shirts celebrate
6. What are you sitting on?
7. Don't miss it
8. "I'm John Albert Myers."
9. Bright day
10. Sight-seeing from West Hall
11. Two little pledges in-er-dresses
12. Wonder what day it is
13. Beat the Reddies

1. This pic is for the "folks"
2. Sweetheart of Ouachita
3. A rare moment
4. Tempting ban-nister
5. Helloooooo
6. Anthony never saw a pyramid like this
7. Pledges will be pledges
8. Bert in hog's heaven
9. All alone?
10. Oh, what you just said!
11. Esquire girls
12. You ain't got no mail





1. Look out below
2. The new "modernized" dorm
3. Wonderful subjects
4. 'Nuff said
5. Sunday mail call
6. Can't see a thing, can you?
7. Too late—
8. Nice job!
9. Camera shy
10. Art for art's sake
11. Ditto





CLASSES





BOB McPHERSON

Senior

BOBBY OWEN

Junior

DEAN NEWBERRY

Sophomore (second semester)

JIM ED CRITTENDEN

Freshman

Class
Presidents

SENIORS...



CLASS OFFICERS

BOB McPHERSON	<i>President</i>
SUE LENDERMAN	<i>Vice President</i>
MARGRETE HORNE	<i>Secretary</i>
WALTER SMART (Not Pictured)	<i>Treasurer</i>

CARL R. AMASON B.S.

El Dorado

Major: Chemistry Minor: Math

*"A good student makes a good man;
He'll reach the top if anyone can."*

GERTRUDE AUGHEY B.A.

Memphis, Tenn.

Major: History and English

*"Friendliness plus sophistication, what
a combination!"*

W.A.A. 2, 3, 4. I. R. C. 1, 2, 3, 4; Vice-
President 3. Ouachita Players 1, 2, 3;
Secretary 2. English Honor Society 4.
Alpha Psi Omega 2, 3, 4. Signal Staff
1, 2, 3, 4; Editor-in-Chief 2, 3. Ripples
Art Editor 1, 2, 3, 4. Secretary Arkansas
Collegiate Press Association 3, 4. Secre-
tary Y. A. W. Council 1, 2. Girls Stu-
dent Government 1. Piano Class 3, 4.
Who's Who in American Colleges and
Universities 4.



LAURA BELLE BAKER B.A.

Little Rock

Major: Speech Minor: English

*"Our hearts go to her without waiting
for her to knock."*

Ouachita Players 2, 3, 4. W.A.A. 2, 3,
4. Alpha Psi Omega 2, 3, 4. Pi Kappa
Delta 2, 3, 4. Choir 2, 4. Ed. Club 2.
Life Service Band 2, 3. President Girls
Student Government 4. Who's Who in
American Colleges and Universities 4.
Transfer from Little Rock Junior Col-
lege.



LLOYD ELWIN BARRETH B.A.

Monette

Major: Bible Minor: History

*"It's a friendly heart that has many
friends."*

Ministerial Association 1, 2, 3, 4. I.
R. C. 4.

ELEANOR BIGGS B.A.

Little Rock

Major: Speech Minor: Home Ec.

*"She is—but room forbids to tell thee
what. Sum all perfection up, and she is
that."*

Home Ec. 2, 3, 4. Ouachita Players 2,
3, 4. B.S.U. President (summer) B.S.U.
Council 2, 3, 4. Y.W.A. Cabinet 1; Presi-
dent 4. Ref. Ed. Club 1, 2, 3. Who's
Who in American Colleges and Universi-
ties, 4.



WANDA ROSE BISHOP B.A.

Alexander

Major: History Minor: Business

"Clever and versatile—always fun."

I. R. C. 1, 2, 3, 4; Secretary 4. Math
Honor Society 3, 4. Life Service Band
1. Book Club 1.



WILEY CALDWELL B.A.
Arkadelphia

Major: History Minor: Speech

"The sky is the limit for his achievements."

Red Shirts 2, 3, 4. I. R. C. President 4. Ouachita Players, Vice-President 4. Pi Kappa Delta 2, 4. Tennis Team 1. Cheer Leader 2.

DESMOND CASTLEBERRY B.A.
Warren

Major: Bible Minor: Speech

"Sincerity is his virtue."

Ministerial Association 1, 2, 3, 4; Clerk 2; President 4.



LEONARD M. CLEMENTS B.A.
New Edinburgh

Major: Business Minor: History

"His witty and jovial attitude will never be forgotten."

SAS 4. I. R. C. 2, 3, 4. "O" Association 1, 2, 3, 4.

LAURA JANE COCHRAN B.A.
Bradley

Major: History Minor: Business

"One to herself is true, and therefore must be so to you."

I. R. C. 3, 4.



KENNETH COOK B.A.
Pine Bluff

Major: History Minor: English

"He is always what he seems."

S.A.S. 4. I. R. C. 3, 4. "O" Association 3, 4. Transfer from Arkansas Tech.

DORIS CORNELL B.S.
Little Rock

Major: Math Minor: Home Ec

"She meets life with a smile."

Home Ec Club 1, 2, 3, 4. Math Honor Society, Vice President 2, 4; Secretary-treasurer 3. Y. W. A. 2, 4. Life Service Band 1, 2.

H. W. CROMER B.A.
Pine Bluff

Major: English Minor: Bible

"When he plans it, it's good."

Sigma Alpha Sigma 2, 3, 4; Vice-President 4. Vice President B.S.U. 3. Advanced R.O.T.C. Ministerial Association 1, 2, 3. Life Service Band 1, 2.



NETTIE LOU CROWDER . . . B.M.E.
Little Rock

Major: Piano

"We need more like her."

Piano Class 1, 2, 3, 4; Secretary 4. Ouachita Players 1.

JACK WALLACE CUTBIRTH . B.A.
Van Buren

Major: Bible Minor: History

"A person as great as his ambition, and he's pretty big."

Piano Class 3, 4. Ministerial Association 3, 4. Chairman Preacher Placement Committee 4. Who's Who in American Colleges and Universities 4. Transfer from Ft. Smith Junior College.



ALTA JEAN DAVIS B.A.
Waldron

Major: Biology and Phy. Ed.

"As merry as the day is long, looking up—laughing—and loving."

Kewpic Klub 1, 2, 3, 4; Treasurer 4. Biology Club 3, 4; Vice-President 4. Ouachita Players 1, 2. Ouachitonian Staff 1. Homecoming Maid 4.

STANLEY S. DURHAM B.A.
Arkadelphia

Major: Bible Minor: English

"Ever loyal, ever true, to the task he has to do."

Ministerial Association 3, 4. Transfer from Arkansas A. & M.



VIRGINIA FAYE EDWARDS . B.A.
DeQueen

Major: History

Minor: English & Speech

"Always there when you need her."

Religious Education Club 1, 2. Life Service Band 1; Y.W.A. 1, 2, 3. I.R.C. 2, 3. Ouachita Players 3. B.S.U. 4. 1st Vice-President.



WYLIE JOE ELLIOTT Junior

T. L. EPTON B.A.
Nashville

Major: Bible Minor: Biology
"We are all glad to be his friend."

Beta Beta 2, 3, 4. Rifle Club 2, 3, 4.
Biology Club 3, 4. Ministerial Association.



BILL ERWIN B.A.
Grady

Major: Business Minor: English
"Chivalry is his middle name."

Red Shirts 1, 2, 3, 4; Treasurer 3; Secretary 4.

MARY JESS FRENCH B.A.
Rector

Major: Business Minor: Speech
"With a twinkle in her eye, she's sure to get by."

Gamma Phi 2, 3, 4; President 4. Ouachita Players 2, 3, 4. Y.W.A. 2, 3, 4. Life Service Band 3.



EDWIN GEURIN B.A.
Hot Springs

Major: Speech Minor: English
"They don't come any better."

Ouachita Players 2, 3, 4; Vice-president 3. Rel. Ed. Club 2, 3, 4; Vice-president 3; President 4. Piano Class 3. English Honor Society 3, 4. Choir 2, 3. Associate Member Ministerial Association 4. Who's Who in American Colleges and Universities 3, 4.

BETTY JEAN GILLESPIE B.A.
Gurdon

Major: Business Minor: English
"Sterling qualities will have their reward."

BOBBY GLADDEN, B. A. . . . Junior

HUGH B. GOLDSBY B.A.
Little Rock

Major: English Minor: Bible

"He'll go places."

Ministerial Association 1, 2, 3, 4. Life Service Band 1, 2, 3. Choir 2. Ripples Essay Editor 2. English Honor Society 3, 4; Secretary 4. Advanced R.O.T.C. 3.



JOHN HALL B.S.
Clinton

Major: Chemistry Minor: Biology

"Determination personified."

Chemistry Club 3, 4. Biology Club 4. Transfer from Arkansas Tech.



MARY BOB HAMMONS B.A.
Forrest City

Major: Organ Minor: History

"A lovely girl is above all want."

Kewpie Klub 1, 2, 3, 4; Chief 2, 3. Piano Class 1, 2, 3, 4. String Ensemble 2, 3. Band 3.

JIMMY HARRIS B.A.
Greggton, Texas

Major: Bible Minor: English

"A good friend whom you can trust."

Beta Beta 2, 3, 4. Ministerial Association 1, 2, 3, 4. Volunteer Band 3, 4. Chorister Life Service Band 2. English Honor Society 3, 4.



HARL HUNBERT HARRIS . . . B.A.
Ouachita

Major: English Minor: Bible

"There's never a dull moment with him."

Ministerial Association 2, 3, 4; Pianist Life Service Band 2, 3. English Honor Society 4.



MARY LARIMORE HELTON . B.A.
Atlanta, Ga.

Major: English Minor: Home Ec.

"Personality and charm all rolled into one."

E.E.E. 3, 4; Vice-President 4. W.A.A. 1, 2, 3, 4; Secretary 3; Treasurer 4. Signal Columnist 2; Circulation Manager 3. Ouachitonia Club Editor 4. Y.W.A. Cabinet 2.

CLIFFORD HERRON B.A.
Curtis

Major: Business Minor: Biology

"Solid, steady, dependable."

Vice-President Biology Club. 4.



BETTY JO HICKS B.A.
Malvern

Major: English Minor: Bible

"A good disposition is more valuable than gold."

Choir 1, 2, 3. Rel. Ed. Club 2, 3, 4. Life Service Band 1, 2, 3, 4; Reporter 2; Pianist 4. Y.W.A. 1, 2, 3, 4. Ouachitonia Staff 2, 4.

PAUL HOGUE B.S.
Paron

Major: Biology Minor: Chemistry

"An all-around fellow."

Beta Beta 1, 2, 3, 4; Treasurer 2. Chemistry Club 1, 2, 4. Biology Club 4; Treasurer 4. Choir 1, 2. Campus Who's Who 4.



MARGRETE HORNE B.A.
Greenwood

Majors: Bible and Phys. Ed.

"With her garden of friends, we all have found a place."

Volunteer Band 1, 2, 3, 4; President 3, 4. Signal Staff 3, 4. B.S.U. Cabinet 3. Secretary Senior Class. Campus Who's Who 4.

BESS HULLENDER B.A.
Waldron

Major: English Minor: History

"If being happy is a crime, she would get a life sentence."

Ouachita Players 3, 4. English Honor Society Vice-President 3; President 4.

MILLARD HULLENDER . . . B.A.
Waldron

Majors: Biology and Physical Education
"Quiet and likeable."
Biology Club 3, 4.



WILLEEN JAGGARS . . . B.S.
Rison

Major: Chemistry Minor: Biology
"If life be worth living, it is worth enjoying."

Gamma Phi 1, 2, 3, 4; Secretary 4.
Chemistry Club 2, 3, 4; Vice-President 3.
Biology Club 4. Signal Staff 3; Band 3.
Chemistry Lab assistant 3.



MARY NELL JERNIGAN . B.A., B.M.
Hayti, Mo.

Major: Piano Minor: History & Organ
"A heart and soul as pure as this will surely live forever."

I. R. C. 2, 3, 4; Secretary 3. Piano
Class 1, 2, 3, 4; President 4. Ouachita
Players 4. Rel. Ed. Club 2, 3, 4; Secre-
tary 3. Life Service Band 1, 2. Ouachit-
onian Staff 2. Choir 1, 2, 3. Y.W.A.
Cabinet 4. Treasurer Girl's Student Gov-
ernment 1, 2.

ELEANOR BLAIR JONES . . . B.A.
Little Rock

Major: Biology Minor: English
"Se has a way about her."

Biology Club 3, 4. Ouachitonian Senior
Editor 4. Transfer from Little Rock
Junior College.



BILL KELTNER . . . B.A.
Brinkley

Major: Business Minor: Voice
*"If friends were bricks he could build
an Empire State Building."*

S.A.S. 1, 2, 3, 4; Vice-President 3; Re-
porter 4. Ouachita Players 1, 2, 3. Piano
Class 1, 2, 3. B.S.U. President 4. B.S.U.
Sunday School Representative 2; Music
Chairman 3; President 4. State B.S.U.
President 4. Choir President 1; Business
Manager 3, 4. Ouachitonian Business
Manager 3, 4. Campus Who's Who 2,
3, 4. Who's Who in American Colleges
and Universities.

CECIL KEMP . . . B.A.
Warren

Majors: Biology and Physical Ed.
*"Dependable and likeable no wonder
he has so many friends."*

Red Shirts 1, 2, 3, 4; President 4.
Treasurer Freshman Class. Football Let-
ter 1, 2, 3, 4. Football Captain 4. All-
State Football 2, 4. Alternate All-Ameri-
can Team 3. "O" Association 1, 2, 3, 4.
Basketball Letter 1. President Biology
Club 3, 4. President Student Body 4.
Who's Who in American Colleges and
Universities 4.



MAXINE BAKER KEMP . . . B.A.
Arkadelphia

Major: Chemistry Minor: Math

"It's nice to be natural when one is naturally nice."

W. C. F. 2, 3, 4; Treasurer 3. Chemistry Club 2, 3, 4; Secretary 2; President 3. Lab Assistant 2, 3, 4. Football Queen 4.

PEGGY JOYCE KINARD . B.A., B.M.
El Dorado

Major: Piano Minor: Voice & English

"When she had passed, it was like the ceasing of exquisite music."

W. A. A. 3, 4. Ouachita Players 3, 4. Piano Class 1, 2, 3, 4; Secretary 3. Y.W.A. Pianist 3. Glee Club Director 3. Choir 1, 2, 3. English Honor Society 4. R.O.T.C. Platoon Sponsor 1. Secretary Junior Class. Homecoming Maid 3. Recital assistant in Voice 1, 3. Graduating Recitals in Piano and Voice, 4. Who's Who in American Colleges and Universities 3, 4.

BETTY JO LACY B.A.
Mountain Pine

Majors: History and Bible

"Life is such a happy affair when she is there."

I. R. C. 3, 4; Social Chairman . Rel. Ed. Club 2, 3, 4; President 3; Social chairman 4. Life Service Band 1, 2. Ouachita Players 4. Y.W.A. 2, 3. B.S.U. Council 3. Signal Reporter 2, 3. Senator Sophomore Class. Secretary Girls Student Government 2.

SUE LENDERMAN B.S.
Wattensaw

Major: Chemistry Minor: Home Ec.

"Sincerity is a true virtue."

Chemistry Club 3, 4; Secretary-Treasurer 3. Home Ec. Club 2, 3, 4; Reporter 4. Vice President Senior Class.

RAYMOND LINDHOLM B.A.
Mountain Grove, Mo.

Major: Bible Minor: History

"A true friends, quiet and reserved."

Ministerial Association 3, 4. Preacher Placement Committee 4. International Relations Club 3, 4.

THOMAS LONERGAN B.A.
Little Rock

Majors: Speech and Bible

"Life is what you make it, and he makes it."

Ouachita Players 2, 3, 4. Alpha Psi Omega 2, 3, 4. Ouachitonian Staff 2, 3; Photography Editor 4. Ministerial Association 1, 2, 3, 4. Life Service Band 2. Little Theater Stage Manager 2, 3, 4.

BURNELE MANNING . . . B.A.
Mt. Vernon

Major: History Minor: English
"Intelligence is what you make it."
I. R. C. 2, 4.



WILLIAM C. MARTIN . . . B.M.E.
Newport

Major: Trombone Minor: Music
"One who has every right to succeed."
S.A.S. 2, 3, 4; Secretary 3, 4. Little
Symphony 1, 2, 3. Popular Orchestra 1,
2. Arkansas State Symphony 4. Piano
Class 1, 2, 3, 4.

JUNE MATHEWS . . . B.A.
Little Rock

Major: English Minor: Speech
*"Cute, clever and full of fun; known
and loved by everyone."*
W.C.F. 3, 4; Reporter 4. W.A.A. 3, 4.
Ouachita Players 3, 4. Alpha Psi Omega
4. President English Honor Society 4.
Ripples Associate Editor 3, 4. Home-
coming Maid 4. Transfer from Little
Rock Junior College.



JANICE MAXWELL . . . B.S.
Louann

Major: Chemistry Minor: Biology
*"Her future is aglow with possibili-
ties."*
Chemistry Club 1, 2, 3, 4; Program
Chairman 3. Biology Club 3, 4. Biology
Lab Assistant 3. Physical Education As-
sistant 4. Y.W.A. 2.

MRS. RAYMOND MORRIS . . . B.S.
Arkadelphia

Major: Home Ec. Minor: Education
Home Ec Club 1, 2, 3. Little Rock
Club 1, 2. Phi Beta Chi 4.



ALICE MARIE MORRISON . . . B.A.
El Dorado

Majors: History and English
"She strives only for the best."
W.A.A. 1, 2, 3, 4; President 3. I. R. C.
2, 3, 4; President 3. Y.W.A. Council 2.
Pi Kappa Delta 2, 3, 4; President 4. Eng-
lish Honor Society 3, 4. Ripples Associ-
ate Editor 2; Editor in Chief 3; Short
Story Editor 4. Ouachitonian Staff 3.
Girls' Student Government 1, 2, 3; Presi-
dent 3. Hamilton Moses Debate Award
3. Battle Royal Mid-South Champion-
ship 2. State Woman's Champion Debate
Team 3. State Woman's Debate Champ-
ion (individual) 3.



JACK I. MOWREY B.S.
Arkadelphia

Major: Chemistry Minor: Biology
"It is as easy to be great as to be small."

Chemistry Club 1, 2, 3, 4. Biology Club 1, 2, 3, 4. Ouachita Players 1, 2, 3. Ouachitonian Photographer 4.

HELEN RUTH MUNDIE B.A.
Arkadelphia

Major: English Minor: History
"She's lighthearted and gay—a general favorite amongst all—they say."

E.E.E. 2, 3, 4; President. Signal Columnist 1, 2; Associate Editor 3. Ripples Short Story Editor 2, 3; Editor-in-Chief 4. W.A.A. 2, 3, 4. Campus Who's Who 4. Who's Who in American Colleges and Universities 4.



BILLIE SUE MURRAY B.S.
Nashville

Major: Home Ec. Minor: Science
"Fivacious and smiling; she wins a host of friends."

Gamma Phi 1, 2, 3; Vice-President 3, 4. Phi Beta Chi 2, 3, 4; Secretary 2; Vice-President 3; President 4. Home Ec Club 1, 2, 3, 4; Treasurer 2.

HARVEY MYRICK B.A.
Hooks, Texas

Major: History Minor: Biology
"Dependability is his middle name."

I. R. C. 3, 4. Biology Club 3, 4. Ministerial Association 3, 4.



AILEEN MCBRYDE B.A.
Star City

Major: Business Minor: Biology
"A merry heart makes a merry countenance."

Gamma Phi 1, 2, 3, 4; Treasurer 2, 4; Ritual Chairman 3. Home Ec Club 2, 3; Secretary 3. Biology Club 3, 4. Life Service Band 2, 3. Y.W.A. 1, 2, 3, 4; Cabinet 2.

MARION ADELE MCKEE B.S.
Lebanon, Mo.

Major: Chemistry Minor: Math
"Quiet is her personality, spirited are eyes."

Chemistry Club 2, 3, 4; Program Chairman 3. Math Honor Society 4. Y.W.A. 2. Transfer from Central College.

BOB McPHERSON B.A.
Lake Village

Major: Biology Minor: Bible
"Our much-admired president."

Red Shirts 1, 2, 3, 4; Vice-President 3.
Class President 1, 2, 4. Cheerleader 1, 2,
3, 4. Band 1, 2, 3, 4; Director 2. Ouachita
Players 1, 2, 3. Ministerial Association 1, 2, 3, 4.
Biology Club 3, 4; Vice-president 3. Campus Who's Who 1, 2, 3,
4. Who's Who in American Colleges
and Universities 4.



CAROLYN CASKEY NELSON B.A.
Des Arc

Major: Business Minor: Home Ec.
"Her ever-ready smile bespeaks her lovely nature."

W.C.F. 1, 2, 3, 4; Treasurer 3. Home
Ecc Club 3, 4. Secretary Sophomore
Class. College Beauty 4.



RICHARD LEE NOWELL B.A.
Arkadelphia

Major: Bible Minor: English
"Whatever he does, he does well."

Volunteer Band 3, 4; Vice-President 4.
Transfer from College of Marshall, Texas.

WARREN NUTT B.A.
Hamburg

Major: History Minor: Bible
"A wholesome man with a worthy job."

Chaplain Gamma Iota 3. I. R. C. 3,
4; Treasurer 4. Choir 3. Ministerial
Association 3, 4; Secretary 4. Transfer
from Arkansas A. & M.



EARL N. OLMSTEAD B.A.
Heber Springs

Major: Speech Minor: English
"None but himself can be his parallel."

S.A.S. 4. Band 1, 2, 3, 4; President 2,
3. Circulation Manager Ripples 3. Alpha
Psi Omega 4. Little Symphony 1, 2,
3. Popular Orchestra 1, 2. Campus
Who's Who 2, 3.

DONALD L. ORR B.A.
Hot Springs

Major: Bible Minor: Speech
"He leaves a place that will be hard to fill."

Beta Beta 2, 3, 4. Ouachita Players 4.
Choir 1, 2, 3, 4; President 4. Male
Quartet 1, 2, 3, 4.



DENNIS LOUJE PARK . . . B.A.
Carmi, Ill.

Major: Bible Minor: Biology

"If ambition will help, he will succeed."

Biology Club 2, 3, 4. Ministerial Association 2, 3, 4. Transfer from Hannibal LaGrange College.

J. D. PATTERSON . . . B.S.
Searcy

Major: Chemistry Minor: Biology

"He will reach his goal."

S.A.S. 1, 2, 3, 4. Treasurer 4. Chemistry Club 1, 2, 3, 4; Vice-President 4. Biology Club 4.



GEORGE PEEPLES . . . B.S.
Arkadelphia

Major: Chemistry Minor: Biology

"In the world he'll find the way to do things right as he does today."

Chemistry Club 1, 2, 3, 4; Reporter 4. Biology Club 4. Math Honor Society 2, 3, 4.

BETTIE POINDEXTER . . . B.A.
Bonneville

Major: Business Minor: Home Ec.

"She is a maid of artless grace, gentle in form and fair of face."

W. C. F. 1, 2, 3, 4; Reporter 3. Home Economics Club 1, 2, 3, 4. Signal Reporter 4. College Beauty 2, 3, 4. Homecoming Queen 4.



JOE PIPKIN . . . B.S.
Athens, Tenn.

Major: Chemistry Minor: Math

"Efficient, effective, agreeable."

Red Shirts 3, 4. Photography Club 1, 2. Chemistry Club 1, 2, 3, 4; Secretary-treasurer 3. Band 1, 2, 3. Chemistry Lab. Assistant 2, 3. Advanced R.O.T. C. 3. Who's Who in American Colleges and Universities 4.

LOIS POWELL . . . B.A.
Gassville

Major: Bible Minor: English

"To have friends is to be one."

Rel. Ed. Club Secretary 3; Vice-President 4. Y. W. A. Cabinet 4. Signal Reporter 3. Ouachitonian Photographer 4. Transfer from Central College.

HAZEL RAMSEY WRIGHT . . . B.A.
El Dorado

Major: History Minor: Business
"Little and snappy, always happy."
I. R. C. 3, 4.



CHLOE DELL REECE . . . B.S.
Norman

Major: Home Ec. Minor: Science
"Grace and talent, what more could one ask?"
Home Ec. Club 1, 2, 3, 4. Phi Beta Chi 2, 3, 4.



ELAINE ROUSE . . . B.A.
Mahvern

Major: Business Minor: Music
"Successfully doing her work in a quiet manner."
Piano Class 1, 2, 3, 4.



CARISMA RYAN . . . B.S.
North Little Rock

Major: Home Ec. Minor: Biology
"Happiness is reflective like the light of heaven."
Gamma Phi 2, 3, 4; Secretary 4.
Home Ec Club 1, 2, 3, 4. Biology Club 4.
Piano Class 1, Phi Beta Chi 4.

MARY-BETH RUDOLPH . . . B.A.
Gurdon

Major: English Minor: Speech
"She can decide and then carry out her decision."
Ouachita Players 2, 3, 4; Treasurer 4.
English Honor Society 4, Alpha Psi Omega 4.
Signal Columnist 2, 4; Assistant Editor 3.
Ripples Poetry Editor 2, 3, 4.
Ouachitonian Assistant Editor 3; Editor in Chief 4.
Piano Class 2, 3. Transfer from Stephens College.

WADE MACK SALE . . . B.S.
Augusta

Major: Chemistry Minor: Speech
"He is a well-made man who has a good determination."
Red Shirts 2, 3, 4. Photography Club 2.
Math Honor Society 2, 3, 4. Chemistry Club 2, 3, 4.
Advanced R.O.T.C. 3.





HAROLD MARION STANLEY . . . B.A.
Detroit, Mich.

Majors: History and Physical Ed.
"I don't say anything that I can't back up."
I. R. C. 3, 4. Assistant Coach 3, 4.

MARINELL STEPHENS . . . B.A.
Searcy

Major: History
Minor: Bible and Education
"A gentle maid by gentle deeds is known."
I. R. C. 2, 3, 4. Choir 1.



REECE STILES B.A.
Malvern

Major: History Minor: Business
"He loves fun well enough to keep on having it."
Ministerial Association 3, 4. I. R. C. 3, 4.

R. T. STRANGE. B.A.
Fort Smith

Majors: Bible and Speech
"A natural born success."
Art Club 4. Ouachita Players 4. Ministerial Association 2, 3, 4; President 4. Transfer from John Brown University.



DAVID MUNROE TATE, JR. . . . B.A.
Lonoke

Major: Math Minor: English
"He needs no recommendations."
Rel. Ed. Club 4. Chorister Life Service Band 4. Choir 4. Male Quartet 4. Transfer from Rice Institute.

MARVIN TATE, JR. B.A.
Washington

Major: History Minor: Bible
"His pleasing manner will guide the way."
Beta Beta 1, 2, 3, 4; Reporter 3; President 4. Signal Staff 1, 2, 3. I. R. C. 3, 4. Ministerial Association 1, 2, 3, 4; Treasurer 3. B.S.U. Summer Council 3. President Ann Wollerman Missionary Fund 4.

BETTY LEE SCHMITZ . . . B.A.
Evansville, Ind.

Major: English Minor: Business

"Contentment is a rare virtue."

Choir 2, 3, 4.



MARY FRANCES SHOFFNER . . B.A.
Searcy

Majors: History and Business

"How could we have done without her?"

I. R. C. 2, 3, 4; Choir 1, 2, 3, 4. Y.W.A. 1, 2, 3, 4; Cabinet 2. B.S.U. Council 1, 2. Piano Class 1, 2, 4. Book Club 2. Life Service Band 1, 2, 3.

MARY FRANCES SIMMONS . . B.A.
Texarkana, Texas

Major: History Minor: Bible

"Her modesty is a candle to her merit."

I. R. C. 2, 3, 4; Social Chairman 3. Y.W.A. Cabinet 1; Treasurer 4; Rel. Ed. Club 2. Life Service Band 1, 2.



WALTER SMART B.S.
Camden

Major: Math Minor: Chemistry

"The kind of man you would want for a neighbor."

Red Shirts 3, 4. Chemistry Club 1, 2, 3, 4. Math Honor Society 2, 3, 4; treasurer 3; President 4; Symphony Orchestra 1, 2, 3. Band 1, 2, 4. Advanced R.O.T.C. 3.

DORIS SMITH B.A.
Plainview

Major: Math Minor: English

"Many people talk too much. She is not one of them."

Math Honor Society 4. Transfer from Magnolia A. and M.



BETTIE NEEDHAM SPRADLIN . B.A.
Arkadelphia

Major: Speech Minor: English

"Her personality radiates to all about her."

Quachita Players 1, 2, 3, 4; Vice-President 3; Alpha Psi Omega 2, 3, 4. Secretary 3, B.S.U. President (summer) 3. Choir 1, 2, 3. Rel. Ed. Club 2, 3.



MRS. DALE TAYLOR . . . B.S.
Arkadelphia

Major: Home Ec. Minor: Science
"Very pleasant, but firm."

Home Ec. Club 1, 2, 3, 4. Phi Beta Chi . 3, 4; Vice President 4. Ministerial Auxiliary 1, 2, 3; President 2.



EVELYN BONHAM TAYLOR . . B.A.
Little Rock

Major: English Minor: Bible
"A friend as stable as the law of gravity."

Ouachita Players 2, 3. I. R. C. 3. Signal Staff 1. Ouachitonian Staff 1. Choir 1, 2; Secretary 2.



ORVILLE W. TAYLOR . . . B.A.
Little Rock

Major: English Minor: History
"Those who are silent are those who have the most to talk about."

Camera Club 3. English Honor Society 3, 4; Treasurer 4. Signal Sports Editor, 1; Associate Editor 2; Editor-in-Chief 3; Ouachitonian Associate Editor 3. Ripples Staff 2; Short Story Editor 3. Treasurer Arkansas Collegiate Press Association 3. College Reporter 2. Student Senate 3. B.S.U. Council 2, 3.



C. W. TOW B.S.
Rogers

Major: Chemistry Minor: Math
In his quiet way he manages to get around."

Chemistry Club 1, 2, 3, 4; President 4. Math Honor Society 3, 4.



HELEN RUTH WATKINS . . . B.A.
Hot Springs

Major: English Minor: Speech
"Words cannot express her infinite sweetness."



WILLIAM K. WHARTON, JR. . . B.S.
Green Forest

Major: Chemistry Minor: Math
"A real man and a true friend."

Red Shirts 2, 3, 4; Reporter 4. Chemistry Club 2, 3, 4; Vice-President 4. Math Honor Society 2, 3, 4.

JEANNE WHISENHUNT . . . B.A.
Norphlet

Major: Business Minor: History
"An all around girl with a good disposition."

Y.W.A. 1, 2, 4. Life Service Band 1, 2.



HOWARD WHITE . . . B.A.
Gurdon

Major: Bible Minor: Speech
"He'll reach his goal."

Ministerial Association 1, 2, 3, 4.



NED LEWIS WHITE . . . B.A.
Marshall, Texas

Major: Bible Minor: Biology
"An Extreme Optimist."

Ministerial Association 3, 4. Biology Club 4.

RAY WHITE . . . B.A.
England

Major: English Minor: History
"If A's were stars, her crown would be a bright one."

English Honor Society 4. Ouachita Players 4. Y.W.A. 3, 4. Transfer from Central College.

CALVIN WHORTON . . . B.A.
London

Major: Math Minor: English
"Men of few words are the best."

Rifle Club 2, 3, 4; Treasurer 2; Vice President 3. Math Honor Society 2, 3, 4; Secretary-Treasurer 2; President 3. Life Service Band 2.



CHARLINE SATTERWHITE . B.A.
Longview, Texas

Major: Business Minor: Bible
Transfer from Kilgore Junior College.

THOMPSON P. COPELAND . B.S.
McGehee

Major: Biology Minor: Chemistry
"His personality is an inspiration."

Life Service Band 1, 2. Biology Club 1, 2, 3, 4.

NOT PICTURED

SUE DAILY ROBERSON B.A.
Arkadelphia

Majors: English and History

"A name to remember."

W.A.A. 2, 3, 4; Vice-president 3, 4; President 4. Home Ec. Club 1, 2, 3; Reporter 2, 3; Vice-president 3. Ouachita Players 1, 2. I. R. C. 3, 4. Life Service Band 1, 2. English Honor Society 3, 4; Secretary 4. Ouachitonian Staff 2. Signal Staff 2, 3. Junior Class Senator. Who's Who in American Colleges and Universities 4.

GERALD TRAVIS B.A.
Hot Springs

Major: Bible Minor: Biology

"Friendship, when a friend meant a helping hand."

Ministerial Association.

JOHN FURQUERON B.A.

Majors: History and Physical Ed.

"Joy is a trick in the air."

"O" Association 1, 2, 3, 4. I. R. C. 3, 4.

ORVILLE ROBERTS B.A.

Majors: History and Physical Ed.

"Failure cannot cast down, nor success make proud."

"O" Association 1, 2, 3, 4.



1



2



3



4



5



6



7



8



10



11



9



12

- 1 Which is Belle?
2. Jerry and Clem
3. Showing the sights
4. Two Beta Belles
5. Must be a new tie
6. Joke!
7. Come on, Ruth, let go!
8. Winter has arrived
9. (nothing printable)
10. What, no orchids?
11. Hmm, what's this?
12. What a way to make a living!

1. "A man in the dorm!"
2. Looking for someone?
3. Artists at work
4. Studying
5. Longest yawn I ever saw.
6. C-C-Cold
W-W-Weather
7. More posing
8. Smile for the bird
9. Nurse Freeman
10. It's a so'thern gal.
suh
11. Aw, come on,
Woolly!
12. Peek-a-Boo





1. Advertising

2. A friend to Ouachita

3. Sunday best

4. "A young man's fancy lightly turns to—"

5. Ray has the ballet ache

6. Cheer up Freddie

7. Jagers at full speed

8. Somebody got it

9. "I love Mickey Mouse"

10. uh-oh, Chapel time

11. Clint and "lover boy"

12. Swoon

JUNIORS . . .



CLASS OFFICERS

BOBBY OWEN
JACKIE MORRISON
EVELYN THOMPSON
HOMER REED
NETA STEWART

President
Vice-President
Secretary
Treasurer
Senator



ACUFF, CHARLES
 ALLEN, DOROTHY V.
 ALLEN, NORENE ELIZABETH
 AMBORT, JOSEPH
 APPLING, BENNIE JEAN

*Fountain Hill
 Eudora
 Arkadelphia
 Little Rock
 West Helena*

ARNOLD, CHRISTINE
 ATKINS, HARRIETT
 BAILEY, FAYE
 BARLOW, J. ALVIN
 BEEBE, NINA GLYNN

*Ft. Smith
 Pine Bluff
 Dermott
 Kansas City, Mo.
 El Dorado*

BENNETT, FRANK DAVID
 BERRY, BAILEY
 BERRY, ED
 BIGGS, ALLIE ROSE
 BOATMAN, BONNIE

*Corning
 Belo Horizonte, Brazil
 Belo Horizonte, Brazil
 Little Rock
 North Little Rock*



BOXLEY, WILLIAM
 BOYD, LOIS MARIE
 BURNS, A. L.
 CAIN, HAZEL
 CARVER, MARTHA JEAN

St. Louis, Mo.
N. Little Rock
Texarkana, Tex.
Heber Springs
Little Rock

CHASTAIN, ONITA JOYCE
 CLEMENTS, ELIZABETH
 COWGER, BETTYE SUE
 CROMER, NELL
 CULPEPPER, Y. D.

Gentry
E. St. Louis, Ill.
Danville
Pine Bluff
Little Rock

DAVIS, DELORES JEAN
 DAVIS, JERRY
 DEATON, BILLY FRED
 DODD, JANICE
 DODSON, BOB

Searcy
Helena
Hot Springs
Stuttgart
Magnolia



DOVE, WIGGS
 ELLIOTT, BILLY
 ELLIOTT, WYLIE JOE
 FIELDS, EMMETT
 FLOYD, RUBY FAYE

*Springfield, Mo.
 Arkadelphia
 Paris
 Fort Smith
 Bradford*

FORSYTHE, WILLARD
 FAUST, AMY GARRETT
 GARNER, ALEX
 GENNINGS, MARVIN
 GIBSON, MYRON

*El Dorado
 Heber Springs
 Ft. Smith
 Batesville
 Pine Bluff*

GLOVER, BERNARDINE
 GLOVER, ROSE MARIE
 GOOD, HENRY HARRISON
 GOODWIN, JEANNE
 GRAFTON, W. WELDON

*Little Rock
 Little Rock
 England
 Almyra
 Russellville*



GRIGSON, A. C.
 HALL, JOE CALVIN
 HALL, RUTH
 HARGIS, BERNIE
 HARRIS, ZELLA MABRY

*Texarkana
 Pine Bluff
 Greenwood
 Warren
 St. Louis, Mo.*

HAWLEY, JAMES
 HEATH, BILL
 HENDRICKS, GEORGE M.
 HENDRICKS, RUTH PICKENS
 HICKMON, JOY

*El Dorado
 Minden, La.
 St. Louis, Mo.
 San Diego, Calif.
 Bradford*

HICKS, GERALD
 HOLT, RUTH
 HOWELL, MARJORIE JUNE
 JACKSON, RICHARD
 JOHNSON, IMA JEAN

*Camden
 N. Little Rock
 Fouke
 Paragould
 Hamburg*



JUSTICE, JEAN
 LEHMAN, HOWARD
 LONERGAN, RUTH
 MADDUX, FAYE
 MAJOR, ALFRED

Little Rock
Parkin
Detroit, Mich.
Arkadelphia
Little Rock

MARTIN, FRED D., JR.
 MAYO, DAVID C., JR.
 MILLER, WANDA LEE
 McHANEY, MARTHA
 MOSLEY
 FREEMAN, MARY JO
 McCLELLAN

Arkadelphia
Walnut Ridge
Hot Springs
Rison
Ozark

McCONNELL, DICKEY
 McCURRY, ALLEN
 McMILLAN, ROBERT J.
 NELSON, BETTYE JEAN
 NELSON, ROBERT

Greenwood
Gould
Arkadelphia
Stephens
Benton



NETHERCUTT, GEORGE E.
 NEWSOM, MARY ELLEN
 NICHOLS, L. C.
 NOWELL, JEAN
 OLDHAM, WILMA

*Arkadelphia
 Smackover
 Arkadelphia
 Arkadelphia
 Arkadelphia*

OWEN, BOBBY
 PARKER, JIM
 PARKER, ROBERT
 PATTERSON, BETTY JO
 PIERCE, NATILLE

*Pine Bluff
 Arkadelphia
 Little Rock
 Bentonville
 Pine Bluff*

PIKE, HARRISON
 POWELL, CATHERINE
 POWER, RALPH
 PRICE, CHARLES
 RADFORD, GLADYS

*Texarkana, Tex.
 Owensboro, Ky.
 Nashville
 Heidelberg, Miss.
 Hot Springs*



REECE, ELAINE
 REED, HOMER D.
 RICHARDS, MARY
 ROSCOE, DALLAS
 RYAN, MARY JANE

*Norman
 Woodlawn
 Bates
 Smackover
 Gurdon*

SHRYOCK, MARTHA BELLE
 SMALLING, TRAVIS
 SMITH, DORIS E.
 SMITH, OSCAR HARDY
 SPENCER, FRANK

*Little Rock
 El Dorado
 Princeton
 El Dorado
 Ft. Smith*

STEWART, NETA
 STONE, ROSE JUNE
 STOUT, JOAN
 THOMAS, CLINTON
 THOMPSON, EVELYN

*Ft. Smith
 Conway
 Siloam Springs
 Oak Grove, La.
 Paris*



TOW, C. W.
 TOW, JO BUCK
 TRAVIS, WILLIAM
 VERMILLION, CHARLES
 WAITES, MARY LIL

Rogers
Texarkana
Hot Springs
Texarkana
Warren

WALLACE, BILL
 WHITTEN, ROY
 WILLIAMS, HAZEL
 WILSON, ROBERT
 WITHERSPOON, PAUL

Arkadelphia
Arkadelphia
Knoxville
Martin, Tenn.
Mena

WOOLLY, VELMA JEAN
 WRIGHT, J. ANDREW
 WRIGHT, JOHN
 VINES, GENE

N. Little Rock
Little Rock
Benton
Greenwood

SOPHOMORES . . .



CLASS OFFICERS

JIM VARNELL	President	(first semester)
MARLIN GENNINGS	Vice-President	
NELDA JEAN ENDERBY	Secretary	
JIM PLEITZ	Treasurer	
CAROLYN CECIL	Senator	



ALLISON, PAUL Walnut Ridge
 ARNOLD, WILLODENE Camden
 ATTAWAY, PANSY Linden, Tex.
 BAILEY, FAYE Dermott



BARRY, MOLLY ANN Hot Springs
 BENSON, FRANCES Hot Springs
 BLALOCK, JACK Augusta
 BRANUM, COLEEN Stuttgart



BRANUM, RALPH Buncetown, Mo.
 BREMERMAN, PAUL F. Denison, Tex.
 BUNCH, SYLVIA Osceola
 BUTLER, ALTON Judsonia



CANTERBURY, MARTHA Magnolia
 CARTER, MARTHA JEAN Little Rock
 CAUSEY, JOHN Liberty, Mo.
 CECIL, CAROLYN LOUCILE Harrison



CHURCH, PASCHAL El Dorado
 CLEMENCE, BONNIE Denver
 CLEMENCE, JUANITA Denver
 COCKRILL, HELEN Mountain View



COLE, MARIE Forrest City
 COPELAND, CLIFFORD E. McGehee
 COTHRAN, JOSEPH GUY Arkadelphia
 CREWS, KARYN Hatfield



CROTTS, RAYMOND B. Texarkana
 CROW, BLAKE Prescott
 CRUNK, IDA MAE Lockesburg
 DAVIS, FLOYD G. Arkadelphia

DENTON, WALLACE *Manning*
 DICKINSON, WALTER *Little Rock*
 ENDERBY, NELDA JEAN *Pine Bluff*
 EVANS, RENA *Joplin, Mo.*



FENDLEY, JAMES *Hot Springs*
 FINGER, ACE *Arkadelphia*
 FLANAGIN, DUNCAN, JR. *Arkadelphia*
 FLOYD, WALLACE *Arkadelphia*



FOSYTHE, WILLARD *El Dorado*
 FREEMAN, BETTY *Foreman*
 GATES, MAC S. *Romeo, Mich.*
 GENNINGS, MARLIN *Batesville*



GRAHAM, MARY SUE *Tuckerman*
 GRAVES, CHARLES *Little Rock*
 HAGAN, MARY CATHERINE *Stuttgart*
 HALEY, THOMAS *England*



HALL, CHARLES *Baltimore, Md.*
 HAMILTON, EVELYN *Columbus*
 HAMPTON, JEANNE *Mena*
 HARRIS, ALFIE *N. Little Rock*



HART, TOM *Hot Springs*
 HENRY, WANDA JO *Russelville*
 HICKEM, BILL *Du Quoin, Ill.*
 HICKS, GERALD B. *Camden*



HUBBARD, IRA *Success*
 HUDSON, WILLIAM *El Dorado*
 IVES, JIMMY *Warren*
 JACK, MERRILL *Siloam Springs*





JERNIGAN, R. M. *Springdale*
 JESSUP, MARY EVA *Glenwood*
 JOLLY, KATHLEEN *Jonesboro*
 KEAHEY, HENRY *Fort Smith*



KEELING, TROY *Little Rock*
 KELLUM, CEGIL *Smachover*
 KENNEDY, JAMES *Little Rock*
 LANCASTER, LOUISE *Mountain View*



LANDS, MELBOREE *Paragould*
 LEATHERWOOD, CAREY *McGehee*
 LEHMAN, HOWARD *Parkin*
 LINCOLN, BEN L. *Arkadelphia*



LINDSEY, MILDRED *Little Rock*
 MADDUX, AUSTIN *Arkadelphia*
 MATLOCK, JOYCELYN *El Dorado*
 MAULE, C. A., JR. *Pine Bluff*



MAYES, BETTIE FRANKS *Holladay, Tenn.*
 MAYES, ROBERT *North Canton, Ohio*
 MOORE, FRED, JR. *Heber Springs*
 MOORE, ROBERT *Arkadelphia*



MOSLEY, ERNEST *Texarkana*
 MULLINS, IMOGENE *Camden*
 MURRAY, FRED *England*
 McALISTER, ROBERT *Dierks*



McCARLEY, MAXINE *N. Little Rock*
 McCASKILL, CHARLOTTE *Arkadelphia*
 McCLENDON, MARY ANGIE *Mountain View*
 McCONNELL, DICKEY *Greenwood*

McCORMICK, ROBERT *Green Forest*
 McGRARY, ROBERT *Malvern*
 NEWBERRY, DEAN *DeQueen*
 OSBOURNE, BILL *El. Smith*



PARR, ROBERT *Little Rock*
 PERRY, FRANCES *Nashville*
 PETREMAN, WESLEY *New York City*
 PHILLIPS, MARY SUE *Hot Springs*



PLEITZ, JAMES *Jonesboro*
 POPE, REEVES *El Dorado*
 POWELL, CLINTON *Arkadelphia*
 PRINCE, FREDDIE *El Dorado*



RASBERRY, DOROTHY DEAN *Marmaduke*
 RAWLS, SHERMAN *Hot Springs*
 REID, WAYNE *Russellville*
 RIGBY, LLOYD P. *Arkadelphia*



ROBERTSON, MARTHA FAYE *Louise*
 ROBINSON, EDWIN *Paragould*
 ROSE, JAMES *Temple, Tex.*
 SANDERS, MARTHA LOUISE *Searcy*



SANDIFER, KENNETH *Little Rock*
 SEWELL, HELEN *Lewisville*
 SHORT, MARK, JR. *Arkadelphia*



SMITH, BERNICE *Boswell*
 SMITH, JOHN LEE *Austin, Tex.*
 SMITH, LEWIS *Hot Springs*
 SPEARS, DOYCE *Prescott*





STEELEY, RUTH *Mountain View*
 STEWART, CLAUDE *Blytheville*
 STROTHER, JAMES *Fort Smith*
 SUMMERS, JUNE *Texarkana, Tex.*



TATE, JO ANNE *Lanoke*
 TAYLOR, JAMES *Ozark*
 TAYLOR, JOHN *Bigelow*
 TRAVIS, WILLIAM *Hot Springs*



VANCE, DOROTHY LEE *Morrilton*
 VARNELL, JIM *Sheridan*
 VERMILLION, CHARLES *Texarkana, Tex.*
 WARD, HIRAM *Murfreesboro*



WARR, MAXINE *Hunter*
 WEBB, PATSY *Magnolia*
 WEST, CURTIS W. *Caddo Gap*
 WHEELER, JOHN *Friendship*



WHITTEN, ROBERT *Rover*
 WILLETT, ANN *Joiner*
 WILLETT, JOHN *Joiner*
 WILLIAMS, CHARLENE *Arkadelphia*



WITHERSPOON, DOYLE *Mena*
 WITHERSPOON, PAUL *Mena*
 WOLF, ROY *E. St. Louis, Ill.*
 WOOD, GLENN *Paragould*



WRIGHT, DOROTHY JEAN *Little Rock*
 ZIMMERMAN, STANLEY *Arkadelphia*

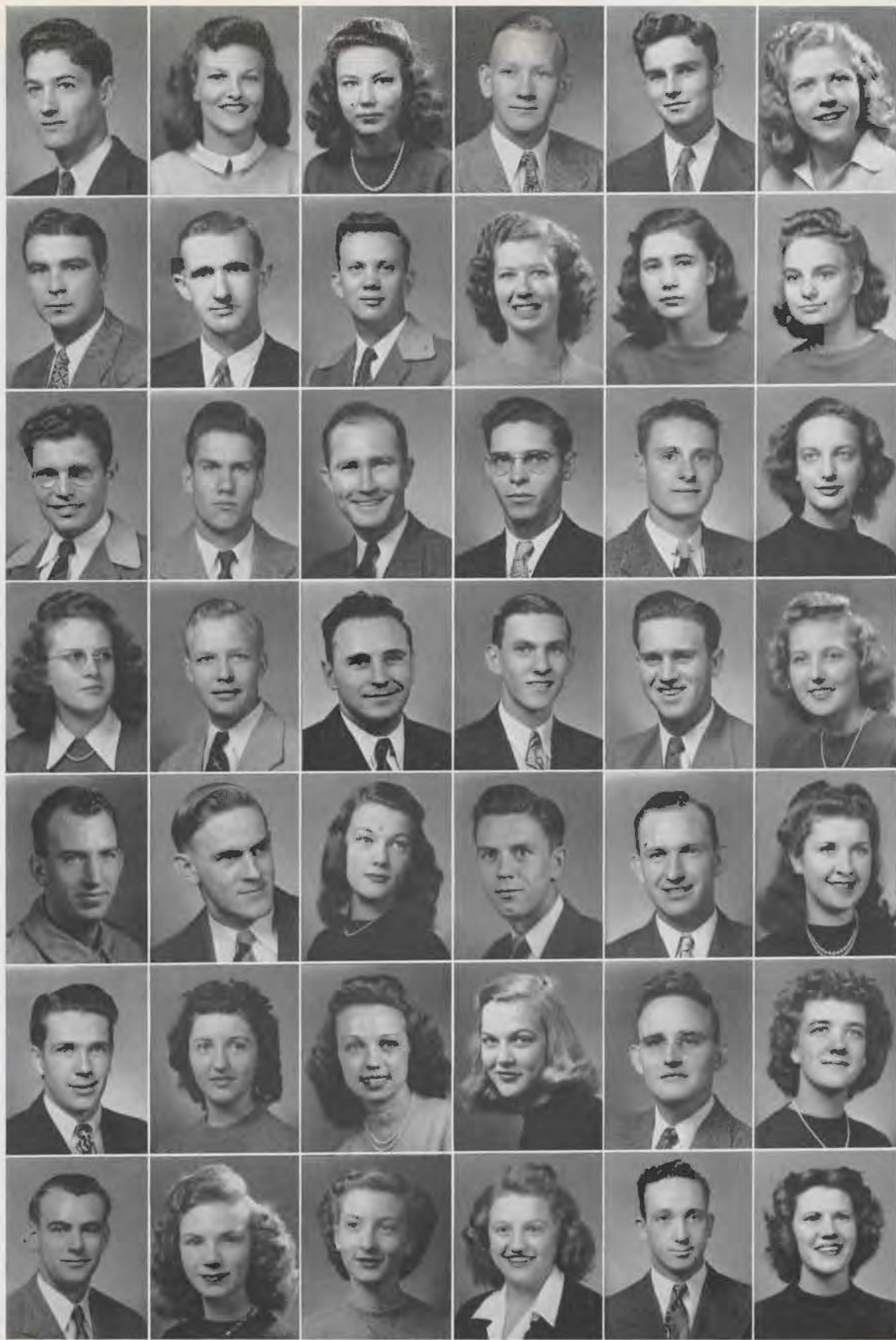
FRESHMEN...



FRESHMAN OFFICERS

JIM ED CRITTENDEN
JANET DUNN
CLARICE BROWN
BUD FRAY
MARY ALICE LINDER

President
Vice-President
Secretary
Treasurer
Senator



ALLEN, DONALD *Smackover*
 ALLEN, DOROTHY M. *Gurdon*
 ALLEN, SALLY *Bradley*
 ALLEN, JIMMY *Bradley*
 ALLISON, CLARENCE *Walnut Ridge*
 ANDERSON, BETTY *Warren*
 ANDERSON, JACK *El Dorado*
 ARNETT, JOHN *Emmett*
 ASHCRAFT, HARRY *Warren*
 BACHMAN, VIVIAN *Malvern*

BENNETT, JAMES *Almyra*
 BLACKWOOD, RAYMOND *Arkadelphia*
 BLANKENSHIP, MARIAN *Texarkana, Tex.*
 BOONE, ELZIE *Hot Springs*
 BOXLEY, RUTH *St. Louis, Mo.*
 BOYCE, BILLY MAX *Smackover*
 BRACY, RAY *Batesville*
 BREMERMAN, MARY *Denison, Tex.*
 BREVIG, PAUL C. *Portland, Ore.*
 BROWN, BILLIE JEAN *Ft. Smith*

freshmen

BARFIELD, ALLA MAE *Arkadelphia*
 BARFIELD, GLADYS VIRGINIA *Arkadelphia*
 BARTON, HUBERT *Decatur*
 BASYE, BILL *Hope*
 BAUER, RALPH *Judson*
 BAXTER, LEE *Horatio*
 BAXTER, ROGER *Texarkana*
 BEARDEN, JOAN *Morrilton*
 BEASLEY, CHARLINE *Norphlet*
 BEEBE, A. V. *El Dorado*
 BENHAM, JAMES E. *Ft. Smith*

BROWN, CLARICE *Hope*
 BRYANN, JO ANNIS *Grossett*
 BURROUGHS, GLENN *Wynne*
 BURTON, PATRICIA *Little Rock*
 BUTLER, JOHN E. *Corning*
 BYRD, JOSEPHINE *Camden*
 CALHOUN, BILLYE JOYCE *Arkadelphia*
 CANARD, ARLENE *Mountain View*
 CARPENTER, JOHN P. *Arkadelphia*
 CASH, LAVERNE *Antoine*



CHESSER, VIOLA *Biscoe*
 CHITWOOD, IDA DORIS *N. Little Rock*
 COLEMAN, HENRY N. *Princeton*
 COLEY, PATRICIA *Foreman*
 COLVIN, CHRIS *El Dorado*
 CORNISH, JOSEPH D. *Nashville*
 COX, MAGGIE FRANCES *Texarkana*
 CRAVENS, JAMES E. *Arkadelphia*
 CRITTENDEN, JIM ED *Arkadelphia*
 CROW, CARROLL *Tallulah, La.*

DUKE, REECE * *Prescott*
 DUNN, JANET *Lake Village*
 DURRETT, MARJORIE *Paducah, Ky.*
 EARLE, ALLA B. *Camden*
 ECHOLS, WANDA JEAN *Norphlet*
 ELMORE, EASTON HAROLD *Booneville*
 EMERSON, FRANCES *Lockesburg*
 ENGLISH, BILLIE CATHERINE *Pine Bluff*
 FARMER, SONNY *Pine Bluff*
 FELTY, JOYCE *Biscoe*

Freshmen

DAILY, JEANNINE *DeLafield, Ill.*
 DALTON, JEAN *Hot Springs*
 DAVIS, IDA *Fouke*
 DAVIS, LOUIS *Stephens*
 DAWSON, ELEANOR *Mountain Home*
 DE GARMO, PAUL *Hot Springs*
 DELANEY, PATRICIA *Rogers*
 DOLLINS, SALLIE *Paragould*
 DOVE, LEONARD *Springfield, Mo.*
 DOYLE, JAMES F. *Pine Bluff*
 DUKE, PEGGY LEE *Marianna*

FEWELL, WILMA JEAN *N. Little Rock*
 FISK, GERALD *Star City*
 FISK, LOUIS *Star City*
 FLEMING, EARL *Crossett*
 FLINT, BETTY JEAN *Vevay, Ind.*
 FLINT, LOGAN *Vevay, Ind.*
 FRAY, MARION, JR. *Fordyce*
 GIESSMAN, ALFRED JEAN *Walnut Ridge*
 GIPSON, JANIE *Augusta*
 GLASGOW, MARY *DeQueen*
 GLOVER, GLORIA *Little Rock*



GLOVER, MARIE *Rison*
 GOBER, DEE *Star City*
 GOLDEN, OSCAR *Arkadelphia*
 GOSNELL, LAVONNE *Delight*
 GRAFTON, FRANCES *Russellville*
 GRAHAM, WILLIS B. *Little Rock*
 GRAY, MARCELLA *Little Rock*
 GROBER, GLENDON *Russellville*
 GULLEDGE, BUFORD *Crossett*
 GULLEDGE, JACK *Crossett*

HIGHTOWER, BETTY SUE *Crossett*
 HIGHTOWER, WILLIAM *Crossett*
 HILLARD, MARY K. *Ozark*
 HOOD, DORA JANE *Earle*
 HOSEY, NINA *Marvell*
 HUNT, T. W. *Lepanto*
 INGLIN, BESSIE *Lonoke*
 INGRAM, AUSTIN *El Dorado*
 INGRAM, JO NELL *DeQueen*
 JACKSON, LORENE *Little Rock*

Freshmen

GUY, ANN *Galena Park, Texas*
 HAILEY, NANCY *Jonesboro*
 HARGIS, ROBERT *Warren*
 HARGROVE, EDGAR *Lockesburg*
 HARMON, ALDEAN *Glenwood*
 HARPER, DELMA *Eudora*
 HARPER, THELMA *Eudora*
 HARRELSON, ASA D. *Arkadelphia*
 HAYNES, ARTHUR D. *Cuddo Gap*
 HENRY, PAUL K. *Little Rock*
 HENSON, PEARL *Hot Springs*

JEANES, R. C. *Columbus*
 JENKINS, SARAH *El Dorado*
 JOHNS, HARRISON *Tunica, Miss.*
 WOODWARD, ANN JOHNSON *Texasarkana*
 JONES, FREDDA DEANE *Westville, Okla.*
 JONES, NORVIN *Wynne*
 KERSEY, STUART *Richmond, Va.*
 KELLEY, WANDA JEAN *Oden*
 KELLEY, HELEN *N. Little Rock*
 HEAHEY, HENRY *Fl. Smith*



KIDD, JESSE	<i>El Dorado</i>	MOORE, ROBERT	<i>Arkadelphia</i>
KILGORE, ROY	<i>Hot Springs</i>	MOSLEY, BILLIE	<i>Little Rock</i>
LEATHERWOOD, CARY	<i>Smackover</i>	MULLINS, BURTON, JR.	<i>El Dorado</i>
LEETON, MARY ALICE	<i>El Dorado</i>	MURPHY, EARL	<i>Malvern</i>
LINDER, MARY ALICE	<i>Hamburg</i>	MURPHY, GUY	<i>Ola</i>
LEDFORD, LOWELL	<i>Fort Smith</i>	McCALMON, GLYNN	<i>Bradley</i>
LOCKWOOD, DAVID	<i>Delight</i>	McCLANAHAN, JOHN	<i>Little Rock</i>
LOWREY, CHARLES	<i>Pine Bluff</i>	McCLUNG, JOHN	<i>Hartford</i>
LUDLAM, DOYLE	<i>Crossett</i>	McCOLLUM, BETTY JEAN	<i>Stuttgart</i>
MANER, ARCHIE	<i>Hot Springs</i>	McKINNEY, JOHN	<i>Rison</i>

Freshmen

MARKS, IVAN NED	<i>Camden</i>	McKINNON, JACK	<i>Little Rock</i>
MARKS, LOIS	<i>Camden</i>	MELVIN, BARRY	<i>Newport</i>
MARSH, HORACE	<i>Camden</i>	McDOUGALD, ELIZABETH	<i>Pine Bluff</i>
MARTIN, J. D.	<i>Hot Springs</i>	NIX, JOHN D.	<i>Donaldson</i>
MAYS, BETTY	<i>Texarkana</i>	NOONAN, MARCENE	<i>Britt, Iowa</i>
MEADOR, D. B.	<i>Arkadelphia</i>	NORRIS, ROBERT	<i>Siloam Springs</i>
MELTABARGER, CARLES	<i>Little Rock</i>	O'KELLEY, LARY DON	<i>Russellville</i>
MILLER, WELDON R.	<i>Texarkana</i>	OLIVER, VICTOR	<i>Wilmot</i>
MINK, FAIRRA	<i>Newport</i>	ORR, BETTY LOU	<i>Arkadelphia</i>
MONK, O. G.	<i>Pine Bluff</i>	OSWALT, WILTON	<i>Fort Smith</i>
MOORE, MARY EDNA	<i>North Little Rock</i>	PARR, ROBERT	<i>Little Rock</i>



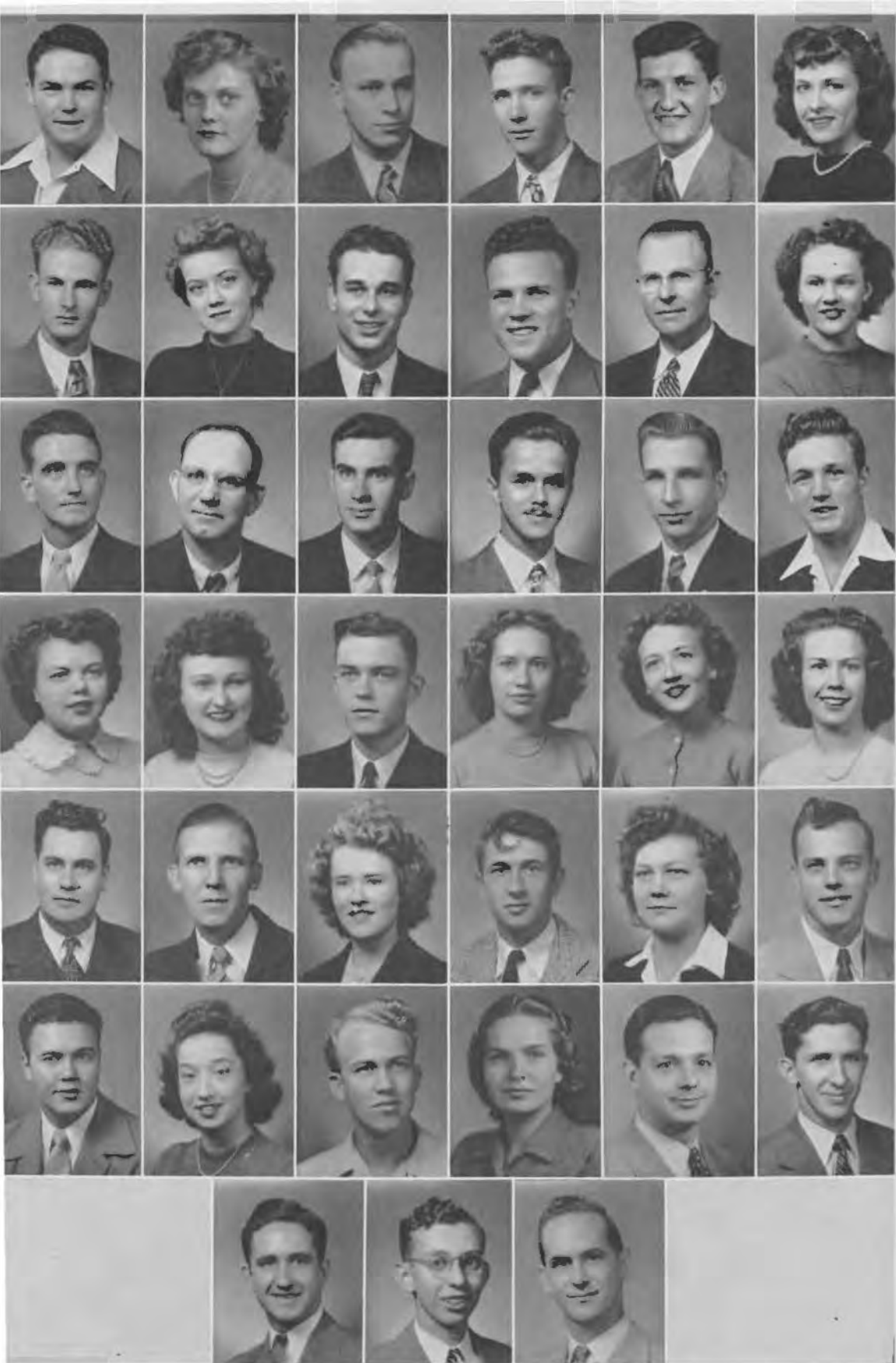
PARTAIN, ROSEMARY Booneville
 PATTERSON, FLETCHER Biscoe
 PEARCE, MARGARET Arkadelphia
 PEEPLES, LULA JO Arkadelphia
 PENNINGTON, CURTIS Warren
 PERRYMAN, ROBERT Dardanelle
 PETTY, BOB Hot Springs
 PHILLIPS, KENNETH Harrison
 PHILLIPS, MARY SUE Harrison
 POGUE, VELDA Ft. Smith

RUSSELL, REUBEN Benton
 RUYLE, DEAN Palmyra, Ill.
 RYAN, REUBEN Jacksonville
 SAMPLE, MALCOLM Ashdown
 SANDERS, BETTY Camden
 SILVEY, NORMA JEAN Hope
 SIMS, COY Batesville
 SIMS, PHIL Ft. Smith
 SIMS, VELMA Batesville
 SISK, WALTER Saginaw, Tex.

Freshmen

PONDER, PAUL Lester
 POOL, WESLEY Arkadelphia
 PROSSER, JAMES McGehee
 PURVIANCE, FARRIS, JR. Strong
 REAVES, T. H. Newport
 REED, JAMES D. Nashville
 REED, JAMES E. Pine Bluff
 RHODES, H. D. Pine Bluff
 RICHARDSON, BEATRICE Hardy
 ROBERTS, VITA JUNE Antoine
 RUNYAN, JERRY Newport

SMITH, CHARLES Little Rock
 SMITH, DON Hot Springs
 SMITH, JO ANN Little Rock
 SORRELLS, SAMUEL S. Magnolia
 SPOTTS, LEN West Memphis
 STARK, DEWEY Mt. Home
 STUCKEY, DALE Alma
 SUTHERLIN, RICHARD DOUGLAS El Dorado
 SUTTON, CAROLYN SUE Hope
 SWAIM, JEANNE Helena



TABOR, JAMES *El Dorado*
 TAYLOR, NELLIE *Little Rock*
 TAYLOR, PRESTON *Junction City*
 THOMAS, DUANE *Curtis*
 THOMAS, LYNDEL *Guernsey*
 THOMASON, IZOLA *Hampton*
 THOMASON, JAY *Delight*
 TILTON, BETTY JO *Ft. Smith*
 TIPPEN, GEORGE *Ola*
 TITTSWORTH, SPEAR *El Dorado*

WATSON, MILDRED J. *Norphlet*
 WEBB, MIGNON *Texasiana, Tex.*
 WEBB, JEANE *Ft. Smith*
 WELLS, ANN *Smackover*
 WESSON, JOHN *Nashville*
 WEST, CURTIS F. *Pine Bluff*
 WEST, INEZ *Caddo Gap*
 WESTBROOK, MAX *Pine Bluff*
 WHITE, MARY LOU *Oden*
 WHITE, W. H. *Smackover*

Freshmen

TIMMEN, W. O. *Arkadelphia*
 TOW, SALLY SUE *Rogers*
 VANCE, JOHN L. *Russellville*
 VANLANDINGHAM, FRANK *Manning*
 VERSER, EARL *Lonoke*
 WALKER, LIONEL *Smackover*
 WARNOCK, JAMES O. *Smackover*
 WARREN, BILL *Dardanelle*
 WARREN, MARY MARGARET *Arkadelphia*

WILLIAMS, EMIL *Searcy*
 WILKINS, BILLY SUE *Newport*
 WILSON, TRUVAUGHN *Malvern*
 WOLF, AVA *E. St. Louis, Ill.*
 WOLF, RAY *E. St. Louis, Ill.*
 WOODWARD, DEAN *Hevmitage*
 WRIGHT, DOYLE *Bauxite*
 YANKIE, JAMES *Hot Springs*
 WRIGHT, HOMER *N. Little Rock*

1. What's this?
2. Been studyin', Neta?
3. Roommates
4. Tiger boosters
5. An equal is met
6. Oophs, slipped
7. Armistice
8. "Ipana, for the smile of beauty"
9. All together now
10. Must be Sunday
11. Tennis sharks
12. Hazel





1. Kewpie Kutie
2. Plans for parade
3. High-Flyers
4. Lines, Lines, Lines
5. The usual Jessie
6. Martha must have made the pic
7. I's jus' a lit'le so'thun gal
8. A light day at the Little Theatre
9. Jo Betty and Jimmy
10. Help, Patsy come get him
11. Once upon a time when there were three girls to a room . . .





ATHLETICS





MARY LIL WAITES

Football Queen

JACKIE MORRISON
McGehee, Jr.
5' 11", 165—Back



CARY LEATHERWOOD
McGehee, Fr.
6' 3", 193—End

CECIL KEMP
Warren, Sr.
6' 1", 190—Center





COACH COWAN



ASSISTANT COACH SMITH



ASSISTANT COACH SMITH

FOOTBALL MANAGERS

Charles Acuff, Tom Hart, L. C. Nichols, Bobby Owen.





FOOTBALL SQUAD

L. to R.—Row 1: Hunt, Garrett, Westbrook, Morrison, Warren, Tabor, Hanks, Sisk, Self, Stark, Sanders.

Row 2—Coach Cowan, Bourns, N. Hudson, McAlister, Kemp, Nelson, Ellen, W. Hudson, Kellum, Warnock, Baxter, Forsythe, Titsworth.

Row 3—Coach Smith, Herrington, Keeling, Norris, Harris, Cook, Leatherwood, Jack, Goudy, Newman, O. Smith, J. Smith, Fleming, Coach Stanley.

Row 4—Gleason, Roscoe, Kersey, Hargis, Rose, Little, Smalling, McCullough, Sangster, Shockley, J. Tow, G. Tow, McKnight, Perryman.

Football Season Resume

OUACHITA	27
MAGNOLIA A&M	0

Showing power and balance from end to end, the Tigers opened the 1946 season with a lop-sided victory over the Magnolia Muleriders. Coach Bob Cowan's charges spaced their scores evenly, one in each quarter, and held the Aggies in their own territory during most of the contest. Aerial artist Veldon

McKnight tossed to Oscar Smith for the initial marker and in the second stanza J. C. McCullough took another McKnight pass for a touchdown.

El Dorado's Spear Titsworth tallied for the third Bengal score after the intermission on a rambling 20-yard jaunt through the hapless Mulerider line and Jackie Gleason added the night-cap on McAlister's pass. Bobby Ellen placekicked all three-extra points.



OUACHITA	7
STATE TEACHERS	0

Gunning for their second conference win, the Baptists fought it out with a determined Bear eleven in Conway and came out victorious on a one touchdown margin. Heads-up football on the part of Center Cecil Kemp and Guard Bill Hudson paid off in the third quarter with the only touchdown of the game.

Ewell Thompson of the Bruins intercepted a McKnight's pass deep in Teacher territory, but the Bears were penalized to their own one-yard line. Attempting to punt out of coffin corner, Thompson was rushed by Kemp and Hudson fell on the blocked kick

in the end zone. Ellen's placement was good.

Easily the standout for the Teachers was Rufus Bell, who sparked the Bruin attack all the way. For the Tigers it was the place kicking of Clarence Garrett that surprised Bengal fans who went to Conway on the first postwar special train.

OUACHITA	12
ARKANSAS TECH	20

The vaunted power of Tech's Wonder Boys upset the championship hopes of the Bengals as they edged out Ouachita 20 to 12 in the mud and mist of Little Rock on October 19. Over 7,000 fans witnessed the see-



saw grid classic and Tech's methodical ground offensive that gradually overcame the Tigers.

All-Stater Jackie Morrison kept OBC in the game with his desperate passes that pinpointed Ellen, Cook, and Leatherwood. An inspired goal-line stand by the Tigers was the defensive highlight of the entire contest. In the third quarter, the Wonder Boys failed to score after gaining a first down on the Bengal five, but they were not stymied on the running of Harwood, Thigpen, and McIntosh. Passes from Morrison to Leatherwood and Ellen posted the only Baptist touchdowns.

OUACHITA	33
HENDRIX	0

Bouncing from a disappointing defeat by Tech, the Tigers went over, around and through Ivan Grove's Hendrix Warriors for a rousing 33 to 0 homecoming victor.. An aerial combination, Morrison-to-Leatherwood, clicked for the first Ouachita touchdown early in the first heat. In the same quarter Morrison heaved again, this time to Ellen for a 12 to 0 lead.

Runs by Garrett and Gleason, more passes by Morrison, and aggressive play by the big Tiger line produced the final Bengal scores. J. C. Barber was the lone Hendrix star.



OUACHITA	14
N. W. LA. STATE	47

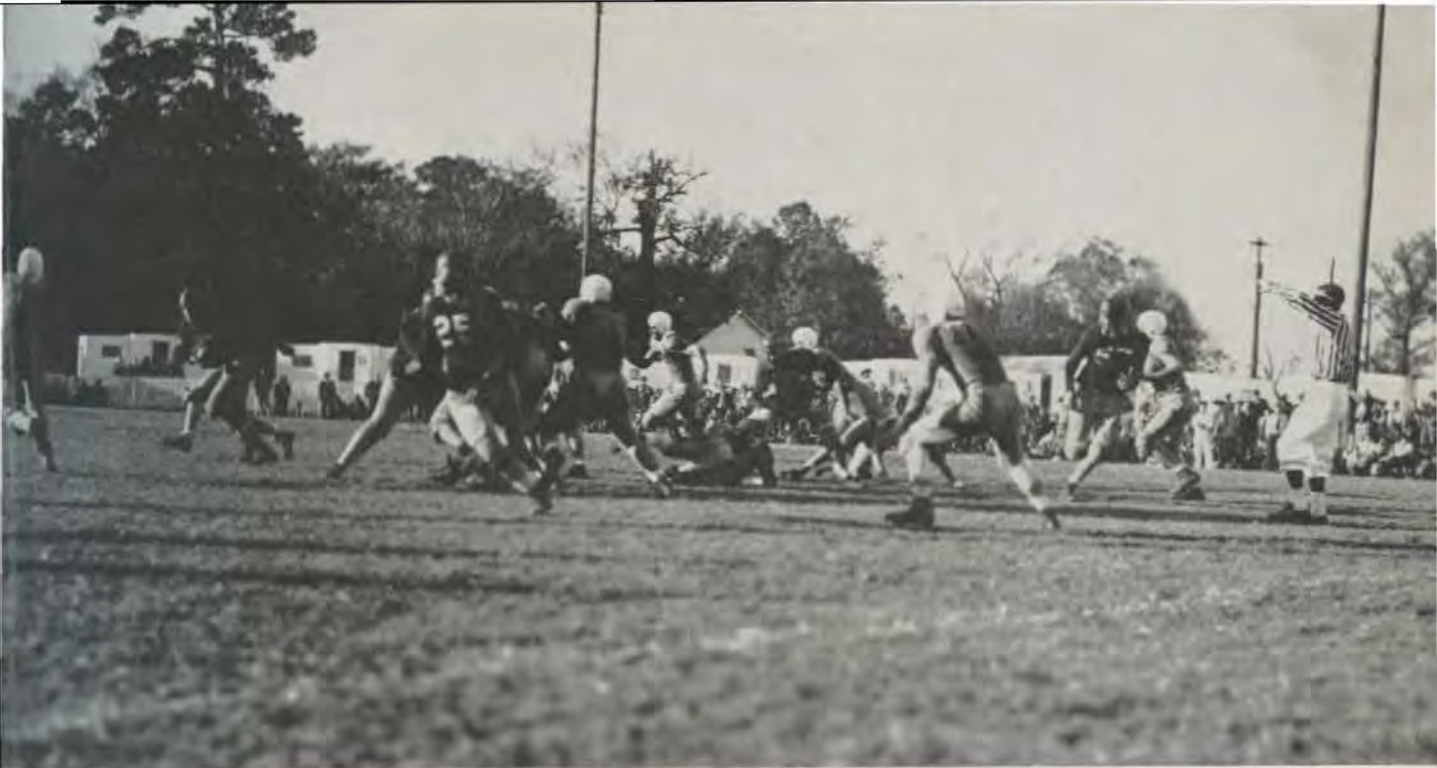
The Bulldogs of Northwestern at Natchitoches, Louisiana outclassed the visiting Tigers and tamed the Arkansans, 47 to 14. At halftime the score stood at Northwestern 20, Ouachita 7, but it might have been 20-14 on Morrison's 58 yard cruise that was nullified due to an off-side penalty against OBC.

Morrison passed to Leatherwood for the initial Tiger tally and the second came on Ellen's plunge from the four-yard line. Ellen converted for both extra points. Backfield standouts were Morrison and George Tow with Norris and Leatherwood charging hard in the line.

OUACHITA	7
ARKANSAS "B" TEAM	13

Desperately fighting to stave off a last minute air attack by the U. of A. "Bees", the Tigers lost a heartbreaking 13 to 7 battle at Fort Smith. The Baby Porkers who had conquered Tech, 12 to 6, were tied with the Baptists until the final play of a hard fought contest, when they connected on a pass and pray combination from Gay to Henderson.

Shifty Oscar Smith hawked the ball away from an unsuspecting Porker back and sprinted 30 yards to pay-dirt. Henderson also scored the other "Bee" touchdown on a pass from Pruitt Kelly.



OUACHITA	20
MONTICELLO	7

Against the Aggies Ouachita recovered from their two game losing streak and trounced the A & M Bollweevils, 20 to 7. Convoy Leslie, the Aggies bruising fullback, met his match in the tenacious Tiger forward wall and in Ouachita's new tail back, Buddy Hudson.

Leading the scoring parade for the Bengals was speedy George Tow, Spear Titsworth and Hudson. Prepped for the renown Bollweevil power plays built around Leslie, the Baptists were vulnerable to end runs, but the

new tactics netted the Aggies only one touchdown.

OUACHITA	19
UNION UNIVERSITY	21

Fourth quarter passing and accurate placekicks were poison to the Baptists from Ouachita as their Baptist cousins from Union University of Jackson, Tenn., eked out the two-point win in perfect football weather at Williams field.

Jackie Gleason, who averaged nine yards per carry, turned in his best performance of



the year in the Bengal backfield. His line smashing running mate, Buddy Hudson, also tore through the outcharged Bulldog forwards with amazing frequency.

Brown's pay-off pass to Jimmy Joyner who made a seemingly impossible catch in the Tiger end zone sewed up the game for Union along with the infallible placements of McLaurin.

OUACHITA	26
HENDERSON	14

Before a record attendance of 8,000 Ouachita's unpredictable Tigers heaped the per-

renial Thanksgiving Day defeat on Duke Wells' scrappy Henderson Reddies. The passing Tigers unveiled a potent ground attack against their arch-foes and stifled Reddie power plays except for a first quarter HSTC drive that netted the initial touchdown of the tussle.

Titsworth led a first half Baptist drive climaxed by Hudson's oft-called end run. All in the third quarter Leatherwood scored on Morrison's aerial and Ellen tallied again on an end excursion. Morrison scored later after a series of power plays.

Buddy Parker sparked a late bid for the Reddies when he executed a perfect screen pass that set up the final touchdown.



the year in the Bengal backfield. His line-smashing running mate, Buddy Hudson, also tore through the outcharged Bulldog forwards with amazing frequency.

Brown's pay-off pass to Jimmy Joyner who made a seemingly impossible catch in the Tiger end zone sewed up the game for Union along with the infallible placements of McLaurin.

OUACHITA	26
HENDERSON	14

Before a record attendance of 8,000 Ouachita's unpredictable Tigers heaped the per-

renial Thanksgiving Day defeat on Duke Wells' scrappy Henderson Reddies. The passing Tigers unveiled a potent ground attack against their arch-foes and stifled Reddie power plays except for a first quarter HSTC drive that netted the initial touchdown of the tussle.

Titsworth led a first half Baptist drive climaxed by Hudson's oft-called end run. All in the third quarter Leatherwood scored on Morrison's aerial and Ellen tallied again on an end excursion. Morrison scored later after a series of power plays.

Buddy Parker sparked a late bid for the Reddies when he executed a perfect screen pass that set up the final touchdown.



JAMES BAXTER, Soph.
Siloam Springs
5'9", 168, Guard

DURWOOD BOURNS, Fr.
DeQueen
6'0", 155, Center

KENNETH COOK, Sr.
Pine Bluff
6'4", 180, End

BOBBY ELLEN, Soph.
6'0", 180, Back
Hope

EARL FLEMING, Fr.
End

WILLARD FORSYTHE, Soph.
El Dorado
5'9", 180, Back

CLARENCE GARRETT, Fr.
Hope
6'0", 162, Back

JACK GLEASON, Fr.
Texarkana
5'7", 155, Back

ROY GOUDY, Fr.
El Dorado
5'11", 155, Back

DALE HANKS, Fr.
6'0", 175, Guard



BERNIE HARGIS, Jr.
Warren
6'0", 180, End

NOLEN HARRIS, Fr.
El Dorado
6'0", 175, Center

JIM HERRINGTON, Soph.
Lake Providence, La.
5'9", 170, Tackle

NATHAN HUDSON, Fr.,
5'0", 185, Back

BILL HUDSON, Soph.
5'10", 185, Guard





BILL HUNT, Fr.
 Fordyce
 6' 1", 160, Center



JIMMY IVES, Soph.
 Warren
 5' 8", 170, Back



MERRILL JACK, Soph.
 Siloam Springs
 5' 9", 175, Guard



TROY KEELING, Soph.
 Little Rock
 6' 1", 220, Tackle



CECIL KELLUM, Soph.
 Smackover
 5' 6", 145, Back

STUART KERSEY, Fr.
 Richmond, Va.
 5' 10", 187, Guard

JOE LITTLE, FR.
 5' 10", 180, Tackle
 Mena

ROBERT McALISTER, Soph.
 Dierks
 5' 10", 160, Back

J. C. McCULLOUGH, Fr.
 Hope
 6' 1", 200, Back

ROBERT NELSON, Jr.
 Benton
 Back



BOBBY NEWMAN, Fr.
 El Dorado
 Back



ROBERT NORRIS, Fr.
 Siloam Springs
 5' 9", 215, Guard



DALLAS ROSCOE, Jr.
 Smackover
 5' 11", 178, Center



JAMES ROSE, Soph.
 Sweeney, Tex.
 6' 0", 180, End



CHARLES SANDERS, F.
 Warren
 6' 2", 170, End





ERNEST SANGSTER, Fr.
Warren
5'9", 165, Guard

WALTER SELF, Soph.
Seymour, Tex.
6'4", 210, Tackle

C. H. SHOCKLEY, Fr.
Lake Providence, La.
6'3", Tackle

WALTER SISK, Fr.
Saginaw, Tex.
5'7", Back

TRAVIS SMALLING, Jr.
El Dorado
6'2", End

CHARLES SMITH, Jr.
Rogers
Guard

OSCAR SMITH, Jr.
El Dorado
6'2", 172, End

CLOMER SMITHERS
Benton
Forward

DEWEY STARK, Fr.
Mountain Home
Back

JAMES TABOR, F.
Smackover
5'7", 191, Guard



SPEAR TITSWORTH, Fr.
El Dorado
5'10", 167, Back

GEORGE TOW, Jr.
Rogers
6'0", 170, Back

JACK TOW
Rogers

JIMMY WARNOCK, Fr.

BILL WARREN
Arkadelphia

MAX WESTBROOK, Fr.
Pine Bluff,





Left to Right—Manager Tom Hart, Coach Cowan, Assistant Coach Stanley, Manager Bailey Berry.



JOHNNY FURQUERON—Basketball captain, represented on the All-State team for his fourth year, voted Ouachita's Best Athlete.



Front Row, left to right—M. Westbrook, T. Gladden, B. Gladden, J. Furqueron, J. McFarland, V. Waggoner, T. Baker.

Back row, left to right—W. Graham, T. Smalling, L. Clements, G. Wilson, O. Roberts, R. Nelson.

Resume of 1946-47 Basketball Season

Ouachita	50	American Legion	43	Ouachita	56	Hendrix	69
Ouachita	65	College of Ozarks	54	Ouachita	57	Arkansas Tech	50
Ouachita	46	College of Ozarks	50	Ouachita	64	Monticello A&M	50
Ouachita	72	East Texas Baptist College	34	Ouachita	43	State Teachers	44
Ouachita	42	Centenary	52	Ouachita	45	State Teachers	53
Ouachita	50	American Legion	49	Ouachita	88	East Texas Baptist College	56
Ouachita	44	Monticello A&M	42	Ouachita	45	Henderson	46
Ouachita	45	Henderson	36	Ouachita	74	Magnolia A&M	57
Ouachita	46	American Legion	58	COLLEGE TOURNAMENT			
Ouachita	65	Hendrix	52	Ouachita	39	Magnolia A&M	44



TROZY BARKER



L. M. CLEMENTS



BOBBY GLADDEN



TOM GLADDEN



WILLIS GRAHAM



JERRY McFARLAND



ROBERT NELSON



ORVILLE ROBERTS



TRAVIS SMALLING



VIRGIL WAGGONER



MAX WESTBROOK



GROVER WILSON

ACTION SHOTS



ACTION SHOTS







ACTIVITIES





Bettye Poindexter
FIRST BEAUTY

As Chosen By

C. A. Moore



Evelyn Thompson
SECOND BEAUTY

Third Choice

Kathleen Jolly



Christine Arnold



Jeanne Hampton



Carolyn Nelson

WHO'S WHO IN AMERICAN COLLEGES AND UNIVERSITIES



Gertrude Aughey

Laura Belle Baker

Eleanor Biggs

Jack Cutbirth

Sue Daily Roberson

Edwin Geurin

Rose Marie Glover

Jean Justice

Bill Keltner

Cecil Kemp

Peggy Kinard

Alice Marie Morrison

Helen Mundie

Bob McPherson

Betty Jo Oliver

Bobby Owen

Joe Pipkin

Velma Jean Woolly



**MOST HANDSOME
BOY—**

Dick Sutherlin

MOST POPULAR BOY—

Bill Keltner



**MOST POPULAR;
MOST COLLEGIATE
GIRL—**

Rosie Glover

**MOST COLLEGIATE
BOY—**

Bob McPherson



CUTEST GIRL—

Joan Sutherlin

CUTEST BOY—

Bobby Owen

SOCIAL CLUBS





HI HATS

Black jumpers with white blouses worn on Thursdays call attention to this group of girls. Bids are issued twice a year to those students whom the members believe are congenial and outstanding in their school activities.

OFFICERS

Martha Jean Carver	President
Evelyn Thompson	Vice-President
Edith Holt	Secretary
Harriett Atkins	Treasurer

MEMBERS

Nelda Jean Enderby	Jo Nell Ingram
Marie Glover	Martha Mosley McHaney
Nina Hosey	Margaret Pearce
Frances Perry	



KEWPIE KLUB

The Kewpie Klub is the oldest organization in school. Social events sponsored by this club, which is striving to promote friendship among the girls, are bright spots on the year's social calendar.

Appropriate insignia of the club is the Kewpie doll, and their emblem is the four-leaf clover. On Tuesdays Kewpie members wear green and white jumpers with white blouses.

OFFICERS

Mary Jane Ryan	Chief
June Howell	Secretary
Alta Jean Davis	Treasurer

MEMBERS

Sue Graham
 Mary Bob Hammons
 Wilma Oldham
 Martha Belle Shyrock
 Sue Sutton

Not pictured—Gloria Carpenter, Marie Cole.



E. E. E.

Girls who strive to be "high-principled, broad-minded, wholesome and trustworthy," as their club aim states it, make up the E.E.E.'s. This year the girls entertained with a lovely banquet and a picnic in April.

The club colors are red and white, their emblem is Mickey Mouse. On Mondays the members wear red and white dresses.

OFFICERS

Helen Mundie	.	President
Mary Helton	.	Vice-President
Bernardine Glover	.	Secretary
Gene Mullins	.	Treasurer

MEMBERS

Sally Allen
 Carolyn Cecil
 Nell Cromer
 Bettye Sue Cowger

Ann Guy
 Mary Kay Hagan
 Betty Jo Patterson
 Velma Jean Woolly



GAMMA PHI

Though it is the youngest social club in Ouachita, the Gamma Phi is one of the most active. From the time pledges appear in their Indian headdress and tom-tom, students know there's fun afoot for the Gamma Phi's.

On Wednesdays the girls dress to carry out the club colors of orchid and silver.

OFFICERS

Neta Stewart	President
Mary-Jess French	Vice-President
Billie Sue Murray	Secretary
Ruth Hall	Treasurer

MEMBERS

Dollie Ryan
 Aileen McBryde
 Jean Appling
 Dorothy Allen
 Rena Evans
 Wilma Fewell

Willeen Jagers
 Bettye Nelson
 Mary Ellen Newsom
 Elaine Reece
 June Summers
 Dorothy Wright



W. C. F.

Organized in 1927, the W.C.F. has as its aim the promotion of a closer friendship among its members and an opportunity for a more varied social life for them.

Club emblem for the W.C.F.'s is an airplane, and their colors are blue and white. The members wear blue and white dresses on Wednesday.

OFFICERS

Rosie Glover	Hi-Flyer (first semester)
Jean Justice	Hi-Flyer (second semester)
June Mathews	Secretary
Kathleen Jolly	Treasurer
Maxine Kemp	Reporter

MEMBERS

Jo Annis Bryant	Gladys Radford
Carolyn Nelson	Mary Lil Waites
Betty Poindexter	Patsy Webb
<i>Not pictured—Wanda Echols, Charlotte McCaskill.</i>	



SIGMA ALPHA SIGMA

In 1933, the S.A.S. was organized by 12 boys with the purpose of the promotion of good fellowship and better living among the student body. Pledges are voted in twice a year.

The club's social activities this year included an open house early in September, the annual Christmas formal and a "thug" party in March, and was climaxed with an all-day picnic in Hot Springs in May.

On Wednesdays, members of the S.A.S. wear white sweaters and blue ties.



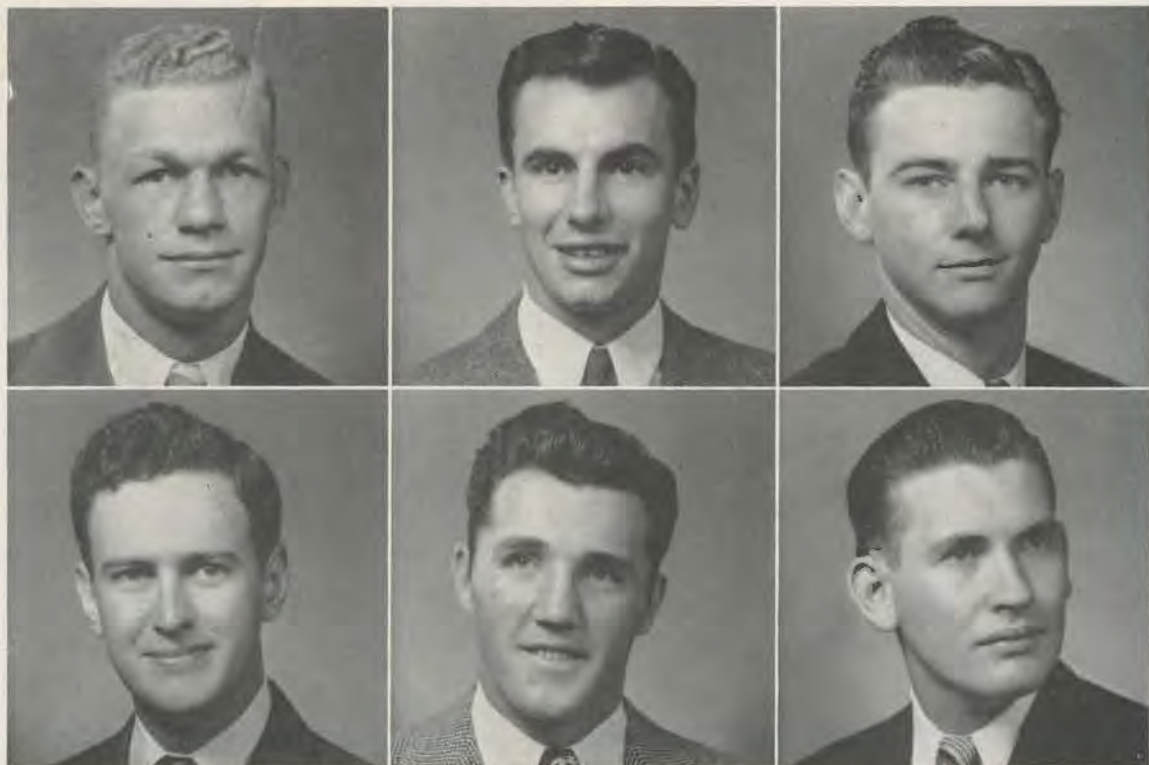
OFFICERS

^ Jerry McFarland	President
^ Tom Hart	Vice-President
^ Billy Martin	Secretary
^ Frank Spencer	Treasurer
^ Duncan Flanagin	Sergeant-at-Arms

MEMBERS

- | | |
|---------------------|---------------------|
| ^ Charles Acuff | ^ Wylie Joe Elliott |
| ^ Bailey Berry | ^ Duncan Mitchell |
| ^ Jack Blalock | ^ Earl Olmstead |
| ^ A. L. Burns | ^ J. D. Patterson |
| ^ L. M. Clements | ^ Lewis Smith |
| ^ Kenneth Cook | ^ James Taylor |
| ^ Jim Ed Crittenden | |

Not Pictured—Bill Bayse, H. W. Cromer, Bill Keltner, Grover D. Wilson,
^ Glenn Wood.



RED SHIRTS

"To promote and foster a better spirit of school loyalty, to encourage a constant improvement in athletics, to recognize scholarship and extra-curricular activities, and to promote the general welfare of all activities pertaining to Ouachita College." This is the purpose of the Rho Sigma, better known as Red Shirts.

This year the Red Shirts entertained with several outstanding parties. On Wednesdays the members are distinguished by their wearing of red shirts with white ties.



OFFICERS

Bernie Hargis	President
Bill Erwin	Vice-President
Virgil Waggoner	Secretary
Walter Smart	Treasurer
Jimmy Ives	Sergeant-at-Arms
Sam Crow	Reporter

MEMBERS

Carl Amason
 Ed Berry
 Wiley Caldwell
 Charles Graves
 Alfie Harris
 Robert Hargis
 Richard Jackson
 Cecil Kemp
 Cary Leatherwood
 Bob McPherson
 Robert Nelson

Joe Pipkin
 Ralph Power
 Charles Price
 Wade Mack Sale
 Oscar Smith
 James Tabor
 Gene Vines
 Hiram Ward
 Jimmy Warnock
 Bill Wharton

Not Pictured—James Baxter, John Burch, Jackie Gleason, Don Lynn, Jackie Morrison, Jack McHenry, Bob Norris, Aubrey Park, Ventress Price, Clomer Smithers, Mitchell Walters.



BETA BETA

The youngest of the boys' clubs, Beta Beta is nonetheless one of the most prominent. This year the club was very active in all phases of school activity. Several picnics and banquets were outstanding on the social calendar.

Beta Beta colors are black and white, and on Wednesdays the members wear white shirts with black ties.



OFFICERS

Marvin Tate	President
Donald Orr	Vice-President
Stuart Kersey	Secretary
Paul Hogue	Treasurer
Trozy Barker	Sergeant-at-Arms

MEMBERS

T. L. Epton	Merrill Jack
Marlin Gennings	Dean Newberry
Marvin Gennings	Bobby Owen
Bobby Gladden	Homer Reed
Henry Good	Dallas Roscoe
Jimmy Harris	Jim Rose
Jimmy Hawley	Earl Verser
Bill Heath	Bob Wilson
Bill Hickem	

Not pictured—Clarence Allison, Tom Gladden, Larry O'Kelley.



PI KAPPA DELTA

ARKANSAS BETA CHAPTER

WILEY CALDWELL, 2 years: Degree of Honor; Best Affirmative Award, Azalea Tournament, 1947; 10 wins against 5 losses, 1946-1947.

LAURA BELLE BAKER, 3 years: Degree of Special Distinction; Winner of Women's Division of Arkansas Speech Tournament, 1947; 9 wins against 3 losses, 1946-47.

ALLA B. EARLE, 1 year: Degree of Fraternity; 11 wins against 2 losses.

NELDA JEAN ENDERBY, 2 years: Degree of Honor; Winner Junior Women's Division of Mid-South, 1946; Second place winner Arkansas Speech Tournament 1947; 12 wins against 3 losses.

MELBOREE LANDS, 1 year: Degree of Fraternity; 13 wins against 3 losses.

ALICE MARIE MORRISON, 3 years: Degree of Special Distinction; President of chapter 1946-47; 9 wins against 3 losses, 1946-47; Winner of Women's Division Arkansas Speech Tournament; Winner of individual high score in Arkansas Speech Tournament.

ERNEST MOSLEY, 2 years: Degree of Honor; Second place winner Louisiana Forensic Tournament, 1947; Second place winner Senior Men's Division Arkansas Speech Tournament 1947; 14 wins against 4 losses.

JAMES PLEITZ, 2 years: Degree of Honor; Winner Best Affirmative Award, Azalea Tournament, 1947; 10 wins against 5 losses, 1946-47.

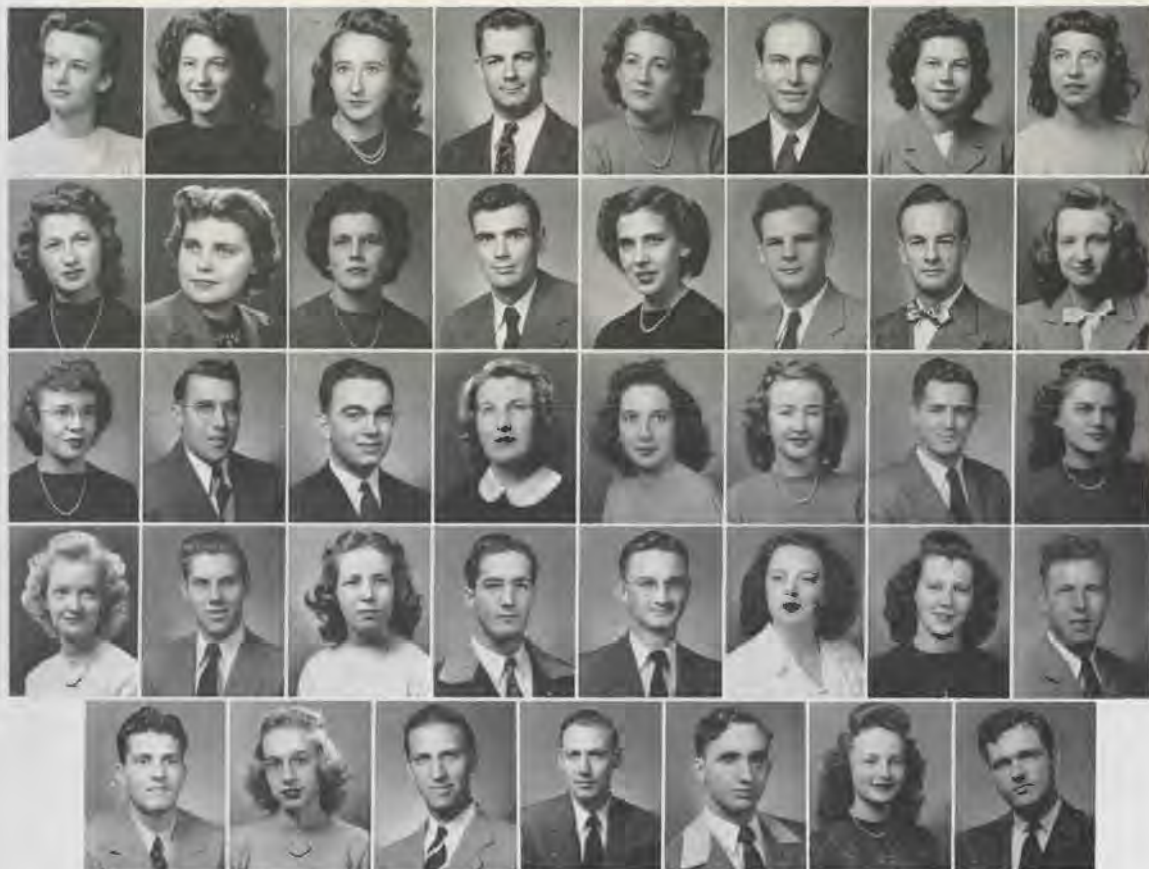
MARTHA FAYE ROBERTSON, 2 years: Degree of Honor; Winner Junior Women's Division of Mid-South, 1946; Second place winner Arkansas Speech Tournament 1947; 12 wins against 3 losses.

Not Pictured—

LEWIS LEMMOND, 1 year: Degree of Fraternity; Second place winner of Senior Men's Forensic Tournament, 1947; Second place winner, Senior Men's Division, Arkansas Speech Tournament, 1947; 9 wins against 3 losses.

DR. R. C. DAILY, 11½ years: Degree of Special Distinction, Order of Instruction; Coach First semester 1946-47; 22 wins against 8 losses.

GEORGE BLACKMON, ½ year: Degree of Proficiency, Order of Instruction; Coach Second semester, 1946-47; 38 wins against 10 losses.



INTERNATIONAL RELATIONS CLUB

OFFICERS

FIRST SEMESTER

Betty Jo Oliver	President
Rose Marie Glover	Vice-President
Wanda Bishop	Secretary
Warren Nutt	Treasurer
Wanda Miller	Reporter

SECOND SEMESTER

Wiley Caldwell	President
Mary Nell Jernigan	Vice-President
Fuby Fay Floyd	Secretary

MEMBERS

Harriett Atkins
 Laura Jane Cochran
 Kenneth Cook
 Sue Daily Roberson
 Walter Dickinson
 Bod Dodson
 Virginia Faye Edwards
 Ruby Faye Floyd
 Mac Gates
 Joe Hall

Betty Jo Lacy
 Alice Marie Morrison
 Mary Ellen Newsom
 Bob Parker
 Anna Beth Phillips
 Mary Sue Phillips
 Jim Pleitz
 Hazel Ramsey Wright
 Sherman Rawls
 Homer Reed

Mary Frances Shoffner
 Mary Frances Simmons
 Dale Spradlin
 Harold Stanley
 Marinell Stephens
 Reece Stiles
 Marvin Tate
 Clinton Thomas
 Evelyn Thompson
 John Willett

Not pictured—Dr. Daily, faculty sponsor, Joy Hickmon, John Furqueron, Mary Jo Freeman, Orville McGuire, Gerald Travis, Juanita Walker.



OUACHITA PLAYERS

When students appear wearing a skull and crossbones, the student body knows the Ouachita Players are off to another year of crowded activity.

This year, in addition to a number of one-act plays, several three-act plays were produced and given for the public, and students participated in the Arkansas State Speech Festival.

A preliminary examination is given each person who applies for membership and only the most talented are allowed to join the group, which seeks to promote and maintain high standards in the dramatic art.

OFFICERS

Earl Olmstead		President
Wiley Caldwell		1st Vice-President
Helen Mundie		2nd Vice-President
Neta Stewart		Secretary
Mary-Beth Rudolph		Treasurer

MEMBERS

Sally Allen	Frances Benson	Marie Cole
Paul Allison	Ed Berry	Y. D. Culpepper
Vivian Bachman	Eleanor Biggs	Jean Davis
Laura Belle Baker	Jack Blalock	Eleanor Dawson
Nina Beebe	Billie Jean Brown	Alla B. Earle
Frank David Bennett	Clarice Brown	Wanda Echols
	Sylvia Bunch	



Virginia Faye Edwards

Ethelyn Franklin

Mary Jess French

Amy Garrett Foust

Edwin Geurin

Pearl Henson

Gerald Hicks

Ruth Holt

Bess Hullender

Sarah Jenkins

Mary Nell Jernigan

Rick Jernigan

Troy Keeling

Peggy Kinard

Betty Jo Lacy

Howard Lehman

Ruth Lonergan

Tommy Lonergan

Faye Maddux

June Mathews

Donald Orr

Margaret Pearce

Natille Pierce

Velda Pogue

Freddie Prince

Dallas Roscoe

Betty Sanders

Belle Shyrock

Bernice Smith

Bettye Spradlin

R. T. Strange

James Taylor

Margaret Warren

Ray White

Paul Allison

Not pictured—Lewis Lemmond, Henry Lindsey, Joe Mefford.



ALPHA PSI OMEGA

The Delta Iota chapter of the Alpha Psi Omega was established on Ouachita's campus in 1931. This is an honorary dramatic fraternity whose purpose is to honor those dramatic students especially commendable and to set a high standard toward which students working in dramatics may strive.

MEMBERS

Gertrude Aughey
Laura Belle Baker
Frank David Bennett
Ed Berry
Wiley Caldwell
Ruth Holt

Tom Lonergan
June Mathews
Helen Mundie
Earl Olmstead
Mary-Beth Rudolph
Bettye Spradlin

Faculty sponsor—Mrs. Rudolph.



CHEMISTRY CLUB

OFFICERS

C. W. Tow	President
J. D. Patterson	Vice-President
Mary Richards	Secretary-Treasurer
Myron Gibson	Program Sponsor
George Peeples	Reporter

MEMBERS

Carl Amason	Sue Lenderman	Charles Price
Y. D. Culpepper	Fred Moore	Mack Sale
Henry Good	Robert Moore	Walter Smart
John Hall	Jack Mowrey	Virgil Waggoner
Jimmy Hawley	Jo Peeples	Hiram Ward
Paul Hogue	Joe Pipkin	Bill Wharton
Willeen Jaggars	Wesley Poole	John Wright
Maxine Kemp		Stanley Zimmerman

Not pictured—Dr. Provine, and Professor Myers, faculty sponsors, Marion McKee.



BIOLOGY CLUB

OFFICERS

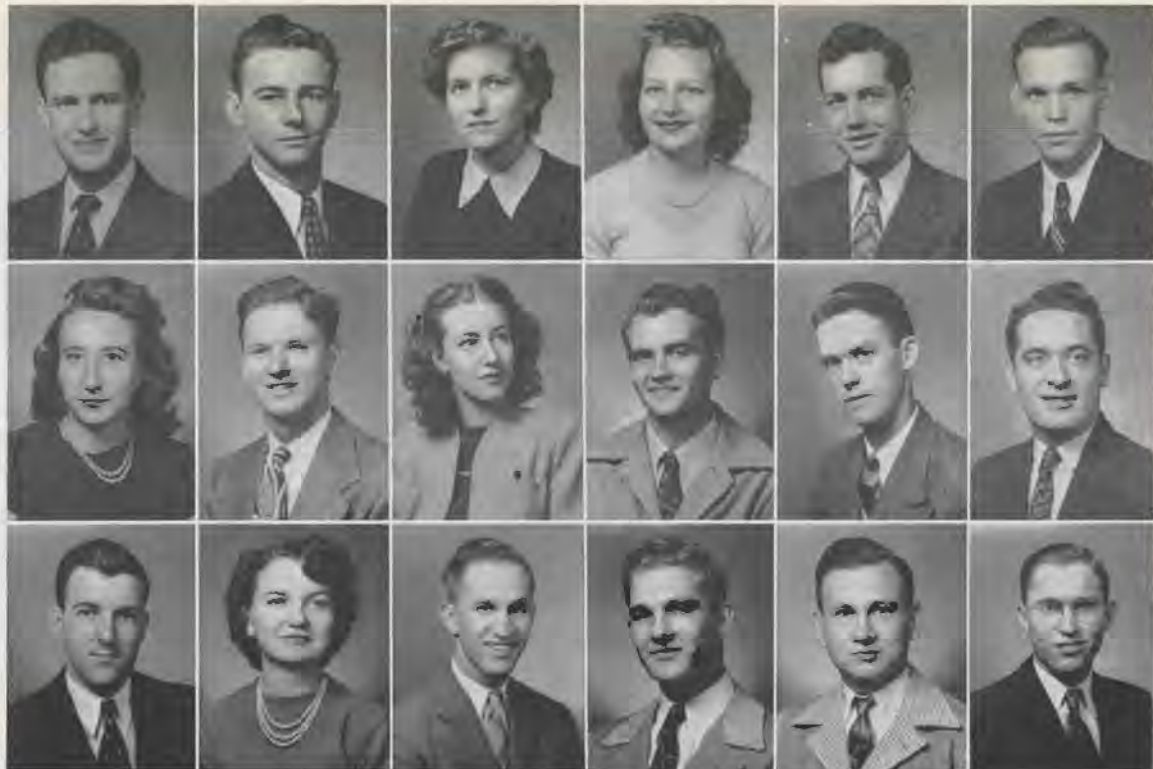
Cecil Kemp	President
Millard Hullender	1st Vice-President
Clifford Herron	2nd Vice-President
Rose June Stone	Secretary
Paul Hogue	Treasurer

MEMBERS

Maxine Kemp
 Marlin Gennings
 Alta Jean Davis
 Billie Joyce Calhoun
 Tommy Copeland
 Bill Elliott
 Duncan Flanagan
 Ethelyn Franklin
 Mary Jo Freeman
 Mac Gates

John Hall
 Jimmy Hawley
 Willeen Jaggars
 Eleanor Jones
 Janice Maxwell
 Harvey Myrick
 Alline McBryde
 Maxine McCarley
 Mary McClendon

Bob McPherson
 Dennis Park
 J. D. Patterson
 George Peeples
 Ralph Power
 Dollie Ryan
 Kenneth Sandifer
 James Taylor
 Jo Buck Tow
 Paul Witherspoon



MATH HONOR SOCIETY

Organized in 1937, the Math Honor Society has as its purpose the stimulation of interest in mathematics. At the beginning of each semester those students with fifteen quality credits in mathematics are admitted as members.

Meetings are held once each month in the math lecture room and programs on mathematics and its related fields are presented.

OFFICERS

Walter Smart
 Virgil Waggoner
 Mary Richards
 Doris Cornell
 Bobby Owen

President
 Vice-President
 Secretary
 Treasurer
 Reporter

MEMBERS

Carl Amason
 Wanda Bishop
 A. L. Burns
 Ethelyn Franklin
 Fred Martin
 George Peeples

Charles Price
 Mack Sale
 Doris Smith
 C. W. Tow
 Hiram Ward
 Bill Wharton

Calvin Whorton



ENGLISH HONOR SOCIETY

Organized in December, 1935, by a group of interested students, Epsilon Omega Sigma, better known as the English Honor Society, has as its purpose the encouragement of creative writing and the stimulation of a keener interest in literature and higher learning.

Programs are given at each meeting which tend to help the members in understanding different phases of literature and its related fields.

Membership in the organization is restricted to those who have the higher grades in English. Honorary membership is offered to those who manifest sufficient creative ability to warrant it.

OFFICERS

Bess Hullender
Helen Mundie
H. B. Goldsby
Orville Taylor

President
Vice-President
Secretary
Treasurer

MEMBERS

Sue Daily Roberson
Edwin Geurin
Carl Harris
Jimmy Harris
June Mathews
Martha Robertson
Claude Stewart

Ray White
Associate Members—
Gertrude Aughey
Peggy Kinard
Wanda Lee Miller
Alice Marie Morrison
Mary-Beth Rudolph

Not pictured—Joe Mefford



GIRLS' STUDENT GOVERNMENT

OFFICERS

- | | |
|-------------------|----------------|
| Laura Belle Baker | President |
| Neta Stewart | Vice-President |
| Allie Rose Biggs | Secretary |
| Dean Harmon | Treasurer |

Cone Bottoms representatives: Ruth Steely, Christine Arnold, Ruth Hall.

Freshman Representative: Arlene Canard.

Not pictured—Mrs. Winburn, faculty sponsor.



STUDENT ASSOCIATION

OFFICERS

Cecil Kemp	President
Rosie Glover	Vice-President
Marvin Gennings	Treasurer
Bobby Owen	Junior President
Bob McPherson	Senior President
Dean Newberry	Sophomore President
Jim Ed Crittenden	Freshman President
Wanda Miller	Editor of Signal
Helen Mundie	Editor of Ripples
Mary Beth Rudolph	Editor of Ouachitonian
Bill Keltner	B.S.U. President
Eleanor Biggs	F.W.A. President



RIFLE CLUB

OFFICERS

Dallas Roscoe	President
Bobby Gladden	Vice-President
Virgil Waggoner	Secretary
Henry Good	Treasurer
Charles Price	Sergeant-at-Arms

MEMBERS

Harry Ashcraft	Marlin Gennings	L. C. Nichols
Baily Berry	Marvin Gennings	Ralph Powers
Blake Crow	Tom Hart	Kenneth Sandifer
T. L. Epton	Austin Maddux	Doyce Spears
Duncan Flanagin		Charles Vermillion

Not pictured—Willie Ferguson, Merrill Jack, George Mays, Duncan Mitchell, Aubrey Park, Jim Pleitz, Jim Rose, Calvin Whorton.

AUTOGRAPHS



PALETTE AND BRUSH

Palette and Brush, the art club, was organized this year at Ouachita. Among the many activities of the club are the painting of signs for football special trains and of the tiger on the press box on the football field grandstand and the decoration of the Homecoming queen's float.

At the December meeting of Palette and Brush, Joe Pipkin showed a series of slides on art from Italy and France.

OFFICERS

James Taylor	President
Ava Wolf	Vice-President
Mary Alice Leeton	Secretary
Jo Anne Tate	Treasurer
Louise Lancaster	Reporter

MEMBERS

Joan Bearden
 Nina Beebe
 Mary Glasgow
 Mary Jessup

Marcene Noonan
 June Summers
 Jeanne Swaim
Faculty sponsor—Mr. Franklin.



PIANO CLASS

One of the most delightful organizations in school, and one which is open to any student who wishes to join it, is the Piano Class, which was organized by Professor Mitchell in 1931. This group meets every Wednesday evening at 6:45, at which time a program is presented by the various piano students. This gives them a valuable chance to perform in public and provides a very interesting and cultural program.

OFFICERS

Mary Nell Jernigan	President
Velma Jean Woolly	Vice-President
Nettie Lou Crowder	Secretary
Jean Justice	Treasurer

MEMBERS

Norene Allen	Ray Bracy	Mary Bob Hammons
Sally Allen	Josephine Byrd	Jeanne Hampton
Betty Anderson	Maggie Frances Cox	Marie Harris
Jean Appling	Karyn Crews	Wanda Jo Henry
Pansy Attaway	Jack Cutbirth	Bill Hickem
Gertrude Aughey	Sally Dollins	Ruth Holt
Vivian Bachman	Nelda Jean Enderby	T. W. Hunt
Molly Ann Barry	Rena Evans	Rick Jernigan
Ralph Bauer	Alex Garner	Mary Jessup
Ruth Boxley	Nancy Hailey	Henry Keahey



MEMBERS

Peggy Kinard
 Charles Lowrey
 Charles Meltabarger
 Mary Edna Moore
 Gene Mullins
 Jerry McLain
 John McClanahan
 John McClung
 Donald Orr
 Jim Parker
 Fletcher Patterson

Mary Sue Phillips
 Susie Phillips
 Elaine Reece
 Lloyd Rigby
 Elaine Rouse
 Mrs. Dean Ruyle
 Reuben Ryan
 Malcolm Sample
 Martha Sanders
 Helen Sewell
 Mark Short
 Phil Sims

Suanna Smith
 Len Spotts
 Ruth Steely
 Marinell Stephens
 David Tate
 Joanne Tate
 John Taylor
 Spear Titsworth
 Charles Vermillion
 Patsy Webb
 Emil Williams



HOME ECONOMICS CLUB

OFFICERS

Nell Cromer	President
Doris Cornell	Vice-President
Ruth Hall	Secretary
Neta Stewart	Treasurer
Faye Maddux	Historian

MEMBERS

Jean Appling	Bernardine Glover	Charlotte McCaskill
Christine Arnold	Sue Graham	Wilma Oldham
Faye Bailey	June Howell	Gladys Radford
Eleanor Biggs	Ima Jean Johnson	Dollie Ryan
Charlotte Daniels	Louise Lancaster	Joan Stout
Frances Emerson	Joycelyn Matlock	Velma Jean Woolly
	Billie Sue Murray	



PHI BETA CHI

This is the honorary home economics organization. Membership is offered only to those Home Ec majors with the higher grades in both the home economics and in other departments.

OFFICERS

Billie Sue Murray	President
Mrs. Dale Taylor	Vice-President
June Howell	Secretary-Treasurer

MEMBERS

Allie Rose Biggs	Mrs. Raymond Morris
Ruth Hendricks	Wilma Oldham
Ima Jean Johnson	Dollie Ryan
Faye Maddux	



"O" ASSOCIATION

Organized in 1917, the "O" Association serves as a medium of fellowship for all students who have lettered in one or more sports. The organization strives to build school spirit and to encourage interest in athletics.

OFFICERS

Oscar Smith	President
Jimmy Ives	Secretary-Treasurer

MEMBERS

Charles Acuff	Earl Fleming
Trozy Barker	Willard Forsythe
Bailey Berry	Bobby Gladden
L. M. Clements	Tom Hart
Kenneth Cook	Bernie Hargis

Merrill Jacks



MEMBERS

Cecil Kemp
 Robert McAlister
 Robert Nelson
 L. C. Nichols
 Bob Norris
 Bobby Owen

Dallas Roscoe
 Travis Smalling
 James Tabor
 Spear Titsworth
 Virgil Waggoner
 Bill Warren

Max Westbrook

Not pictured—Johnny Furqueron (vice-president), Tom Gladden, Hollis Haley, Nolen Harris, Nathan Hudson, Bill Hunt, Cary Leatherwood, Joe Little, J. C. McCullough, Donald Moore, Jackie Morrison, Jerry McFarland, Robert McMillan, Orville Roberts, Ernest Sangster, James Smith, Clomer Smithers, George Tow, Grover Wilson.



BAND

1st Row—Martha Jean Carver, Gloria Carpenter, Ann Guy, Jimmy Prosser, Marian Blankenship, Betty Anderson, Stanley Zimmerman, Gene Mullins, Jeane Webb, Ben Lincoln, Belle Shyrock, Mary Alice Linder.

2nd Row—Mr. Burns, Dale Stuckey, Jack Blalock, Wesley Petreman, Earl Olmstead, Patsy Webb, Mary Katherine Martin, Johnny McClung, A. L. Burns.

3rd Row—Frances Cox, Gurney Lowe, Harrison Pike, Wylie Joe Elliott, Bill Hickem, Bob Dodson, Billie English, Nancy Hailey, Bill Basye.

4th Row—Jeanne Swaim, Sam Sorrells, Bob McPherson, Billy Martin, Fred Martin, Lee Baxter.

5th Row—Charles Smith, Bill Graham, Harrison Pike.



W. A. A.

The Women's Athletic Association, formerly the A.R.C., is an honorary organization for those women students who are outstanding physical education students.

The W.A.A. aims to bring together all Ouachita students. This year the association sponsored the all-school Valentine party.

OFFICERS

Rosie Glover
Sue Daily Roberson
Jean Justice

President
Vice-President
Secretary-Treasurer

MEMBERS

Willodene Arnold
Gertrude Aughey
Laura Belle Baker
Bonnie Boatman
Martha Jean Carver
Nell Cromer

Bernardine Glover
Mary Helton
Edith Holt
Lorene Jackson
June Mathews

Alice Morrison
Helen Mundie
Mary Sue Phillips
Gladys Radford
Jo Buck Tow
Velma Jean Woolly

Faculty sponsor—Mrs. Cowan.

MEN'S QUARTET and



DON ORR
President

WANDA JO HENRY
Devotional Chairman

A. L. BURNS
Business Manager



THE A CAPELLA CHOIR





LIFE SERVICE BAND

One of the most active organizations in school is the Life Service Band, which is also one of the oldest religious groups at Ouachita.

This year the band had several socials, besides the street services and other evangelical activities.

OFFICERS

FIRST SEMESTER

Jerry McLain	President
Sam Sorrells	Vice-President
Amy Garrett Faust	Secretary
Harrison Johns	Treasurer
Betty Jo Hicks	Pianist
Jeanine Daily	Reporter

SECOND SEMESTER

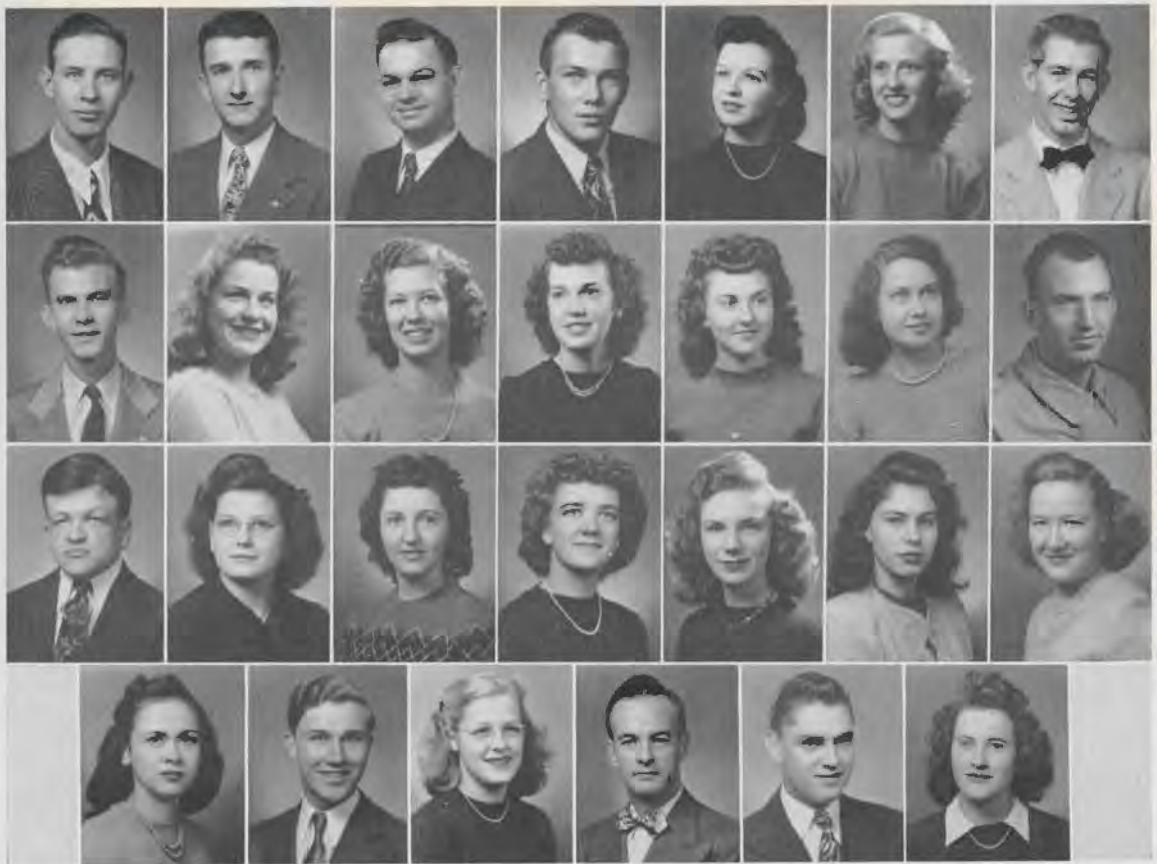
Austin Ingram	President
Bud Fray	Vice-President
Bessie Inglis	Secretary
Phil Sims	Treasurer
Vivian Bachman	Pianist
Velda Pogue	Reporter

MEMBERS

Dorothy Allen
 Elzie Boone
 William Boxley
 Lois Marie Boyd
 Billie Jean Brown

Pat Burton
 Josephine Byrd
 Onita Chastain
 Viola Chesser
 Juanita Clemence

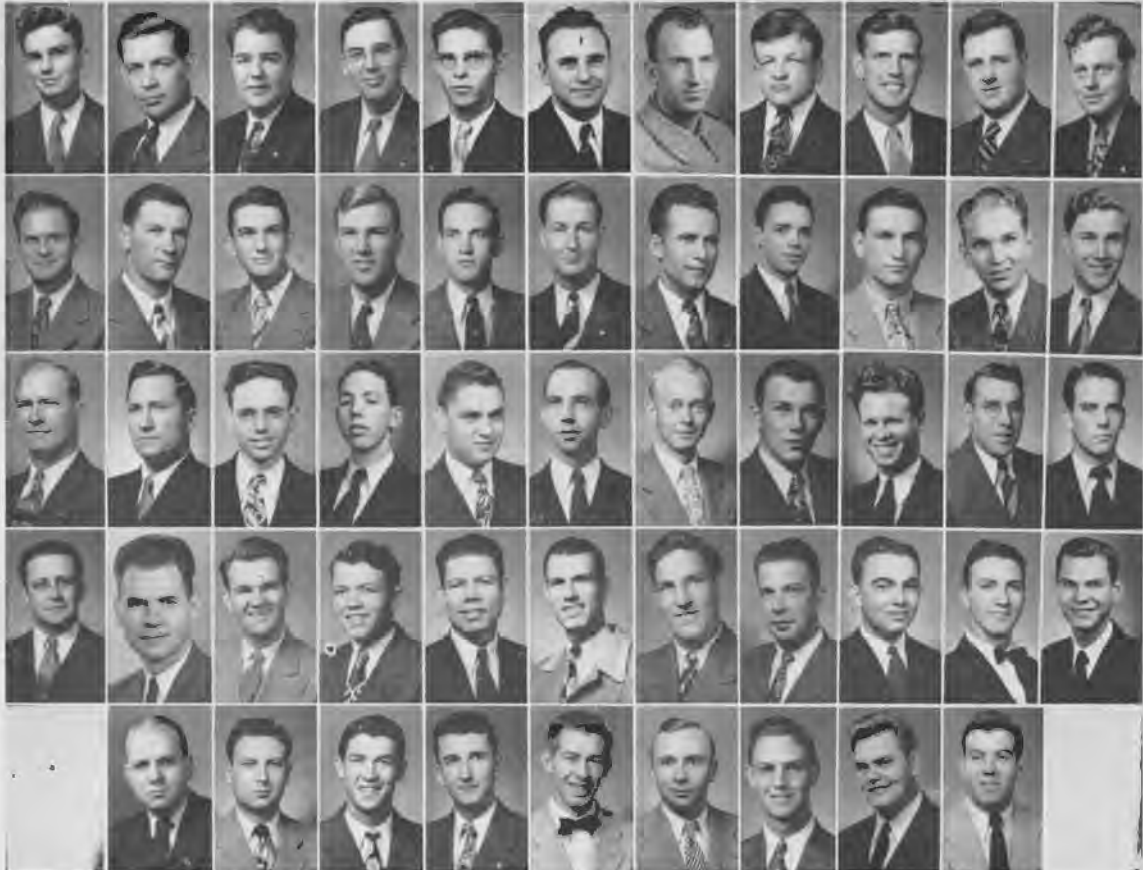
Wallace Denton
 Janice Dodd
 Bob Dodson
 Harold Elmore
 Frances Emerson



MEMBERS

Billie English
 Wilma Fewell
 Charles Hall
 Earline Holt
 Wanda Jo Henry
 Mary Kay Hillard
 Dora Jane Hood
 Lorene Jackson
 Rick Jernigan
 Norvin Jones
 Henry Keahy
 James Kennedy
 Jesse Kidd
 Howard Lehman
 Lois Marks
 Charles Meltabarger

G. G. Monk
 Ernest Mosley
 Earl Murphy
 John McClanahan
 Robert McCrary
 Freddie Prince
 James D. Reed
 Bernice Smith
 Ruth Steely
 Rose June Stone
 David Tate
 Charles Vermillion
 Maxine Warr
 Mignon Webb
 J. Andrew Wright



MINISTERIAL ASSOCIATION

MEMBERS

Clarence Allison

Joe Amthort

Al Barlow

Lloyd Barrett

Lee Baxter

James Benham

Elzie Boone

William Boxley

Ralph Branun

Paul Bremerman

Desmond Castleberry

John Causey

Pete Church

R. B. Crotts

Jack Cutbirth

Floyd Davis

Jerry Davis

Louie Davis

Bill Deaton

Wallace Denton

Leonard Dove

Wiggs Dove

Stanley Durham

Bill Elliott

Harold Elmore

T. L. Epton

James Fendley

Bud Fray

Alex Garner

Mac Gates

Marvin Gennings

Edwin Geurin

H. B. Goldsby

Weldon Grafton

Glendon Grober

Bulford Gullede

Jack Gullede

Tom Haley

Charles Hall

Joe Hall

Carl Harris

Jimmy Harris

Bill Heath

Bill Hickem

Ira Hubbard

Harrison Johns

Norvin Jones

Henry Keahy

Troy Keeling

Stuart Kersey



MEMBERS

Howard Lehman

Lowell Ledford

Raymond Lindholm

Tom Lonergan

Charles Lowrey

Al Major

Raymond Marks

C. A. Maule

Bob Mayes

Ernest Mosley

Harvey Myrick

John McClanahan

Allen McCurry

Jack McKinmon

Jerry McLain

Bob McPherson

George Nethercutt

Dean Newberry

Lee Nowell

Warren Nutt

Larry O'Kelley

Dennis Park

Bob Parker

Curtis Pennington

Kenneth Phillips

Harrison Pike

Jim Pleitz

Harold Presley

Freddie Prince

James D. Reed

Wayne Reid

Lloyd Rigby

Dallas Roscoe

Dean Ruyle

Coy Sims

Sam Sorrels

Claude Stewart

R. T. Strange

Marvin Tate

John Taylor

Preston Taylor

W. O. Tomlin

William Travis

Frank Vanlandingham

Jim Varnell

Charles Vermillion

Curtis West

Ned White

Robert Whitten

John Willett

Bob Wilson

Robert Parr

Spear Titsworth

J. Andrew Wright

Tru Vaughn Wilson

Roy Wolf

Doyle Wright



VOLUNTEER BAND

OFFICERS

Margrete Horne
 Bob Wilson
 Zella Harris
 Martha Canterbury
 Hazel Williams

President
 Vice-President
 Secretary
 Music Director
 Social Chairman

MEMBERS

Dorothy Allen
 Marian Blankenship
 Elizabeth Clement
 Wiggs Dove
 Marjorie Durrett
 Bill Elliott

Billie English
 Alex Garner
 Glendon Grober
 Dean Harmon
 Jimmy Harris
 Bill Heath

Al Major
 Bob Mayes
 O. G. Monk
 Jean Nowell
 Harold Presley
 Betty Jo Tilton

Not pictured—Lee Nowell (treasurer), Helen Sewell (pianist), Lois Marks (program chairman), Mignonette Smith, Lawrence Ferriell, Juanita Walker, Earline Holt, Raymond Reed.



REL ED CLUB

OFFICERS

Frank Spencer
 Charles Lowrey
 Lois Powell
 Bonnie Boatman
 Earl Murphy
 Patsy Webb
 Martha Sanders
 David Tate
 Hazel Cain

President, first semester
 President, second semester
 Vice-President
 Secretary
 Treasurer
 Publicity Chairman
 Pianist
 Chorister
 Social Chairman

MEMBERS

Norene Allen
 Vivian Bachman
 Mary Bremerman
 Martha Jean Carter
 Viola Chesser
 Joyce Felty

Bill Hickem
 Betty Jo Hicks
 Mary Kay Hillard
 Bessie Inglin
 Austin Ingram
 Rick Jernigan
 Howard Lehman

Charles Meltabarger
 Fletcher Patterson
 Malcolm Sample
 Mark Short
 Charlene Williams
 Emil Williams

Not pictured—Preston Taylor, Mignonette Smith, Jack Lyde, Minnie Lee Lowrey, Hazen Lowrey, Johnny Jackson.



Y. W. A. CABINET

OFFICERS

Eleanor Biggs	President
Bonnie Boatman	Vice-President
Marinell Stephens	Program Chairman
Mary Simmons	Treasurer
Dorothy Rasberry	Secretary
Lois Powell	Mission Study Chairman
Rose June Stone	Community Missions Chairman
June Summers	Publicity Chairman
Harriett Atkins	Social Chairman
Jeanne Hampton	Chorister
Betty Anderson	Pianist
Joan Stout	Window Chairman
Josephine Byrd, Martha Canterbury	Circle Chairmen

MEMBERS

Sallie Dollins	Lorene Jackson	Neta Stewart
Jeanne Goodwin	Catherine Powell	Patsy Webb



B. S. U. COUNCIL

Bill Keltner

President

MEMBERS

Virginia Faye Edwards

Wanda Jo Henry

Patsy Webb

Kathleen Jolly

Betty Jo Oliver

Jim Pleitz

Melboree Lands

Frank Spencer

Pete Church

Ruth Steely

Dean Newberry

Alex Garner

Martha Faye Robertson

Desmond Castleberry

Eleanor Biggs

Not pictured—Margrete Horne, R. T. Strange.



SIGNAL

Wanda Lee Miller Editor-in-Chief
 Marvin Tate Bus. Mgr. (Resigned)

Joy Hickmon
 Jeanne Goodwin
 Rosie Glover
 Betty Hightower
 Jim Ed Crittenden
 Margrete Horne

Assistant Editor
 News Editor
 Society Editor
 Society Editor
 Sports Editor
 Religious Editor

Columnists—Clarice Brown, Winnie Doss Brown, Bob Dodson, Gladys Radford,
 Mary-Beth Rudolph, June Summers.

Reporters—Betty Anderson, Nina Beebe, Jo Bryant, Bill Heath, Mary Ellen New-
 som, Sherman Rawls, Mary Simmons, Emil Williams.

Mary Alice Leeton
 Lewis Smith
 Pat Delaney
 John Taylor
 Neta Stewart

Proof-Reader
 Circulation Manager
 Assistant
 Assistant
 Staff Secretary





SIGNAL

Wanda Lee Miller Editor-in-Chief
 Marvin Tate Bus. Mgr. (Resigned)

Joy Hickmon
 Jeanne Goodwin
 Rosie Glover
 Betty Hightower
 Jim Ed Crittenden
 Margrete Horne

Columnists—Clarice Brown, Winnie Doss Brown, Bob Dodson, Gladys Radford,
 Mary-Beth Rudolph, June Summers.

Reporters—Betty Anderson, Nina Beebe, Jo Bryant, Bill Heath, Mary Ellen New-
 som, Sherman Rawls, Mary Simmons, Emil Williams.

Mary Alice Leeton
 Lewis Smith
 Pat Delaney
 John Taylor
 Neta Stewart

Assistant Editor
 News Editor
 Society Editor
 Society Editor
 Sports Editor
 Religious Editor

Proof-Reader
 Circulation Manager
 Assistant
 Assistant
 Staff Secretary



RIPPLES

Helen Mundie
Reece Stiles

Editor-in-Chief
Business Mgr.



June Mathews

Assistant Editor

Mary-Beth Rudolph

Poetry Editor

Alice Marie Morrison

Essay Editor

Clinton Thomas

Short Story Editor

Gertrude Aughey

Art Editor





MARY BETH RUDOLPH

Editor-in-Chief



BILL KELTNER

Business Manager



OUACHITONIAN

Faye Maddux

Assistant Editor

Eleanor Jones

Senior Editor

Henry Good

Junior Editor

Edith Holt

Sophomore Editor

Margaret Warren

Freshman Editor

Belle Shyrock

Art Editor

Jim Ed Crittenden

Sports Editor

Photographers—Tom Lonergan, Lois Powell, Jack Mowrey, Richard Jackson

Betty Jo Hicks

Secretary

Mary Helton

Club Editor

Not pictured—Wanda Miller, Caption Editor.



RENA EVANS
Battalion Sponsor

NELDA JEAN ENDERBY
Sponsor Company "A"

MARY KAY HAGAN
Sponsor Company "B"



Military Staff



Commissioned Officers



Non-Commissioned Officers





ROTC BATTALION

COMPANY "A"





RIFLE TEAM

T. L. Epton, Tommy Copeland, Dallas Roscoe, Lionel Walker, Farris Purviance.

COMPANY "B"





**GIRLS' BASKETBALL
CHAMPIONS**

**GIRLS' BASKETBALL
RUNNERS'-UP**





1. Not really!
2. Ipana
3. You brute
4. Great expectations
5. Gastronomical satiety—!
6. Distraction in black and white
7. Pingpong parlor
8. To heck with the car
9. Sweetness and light
10. What lovely tree have we here?
11. Just ask for the manager
12. Crowning glory
13. The silent touch?
14. Rooms for rent?

1. Lookee!
2. The men and the Turk
3. Why people don't watch the game.
4. Cheesecake
5. Easier than marching
6. The queen and her maids
7. The best part of all pledging
8. That boy sure can kick
9. Windblown but cute
10. Don't go too late
11. Wisht I was pretty
12. Um-m-m
13. My name's Mary Lil
14. The seniors did this one
15. See Jean's pearls
16. Smile at the birdie, Evie.



LETTER FROM THE EDITOR

TO THE STUDENTS: This is your yearbook. We hope you like it. If you do, then you can take credit for it—we've tried to make it as you would like it. And if you don't like it, blame us.

TO THE STAFF: You've all been grand. The cooperation was the best and most whole-hearted we have ever seen. To mention you all by name would be superfluous, but we would like to mention the tiger sketches made by Art Editor Belle Shyrock, and the excellent work of Photography Editor Tom Lonergan.

TO THE PRINTERS AND ENGRAVERS: You have gone far "beyond the call of duty" to make this a good yearbook. We appreciate it, and hope that you will not be disappointed.

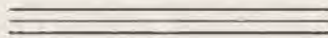
MARY-BETH RUDOLPH, *Editor*

OUACHITONIAN FAMILY TREE

<i>Year</i>	<i>Editors</i>	<i>Business Managers</i>
1907	J. E. Talbot Ruby Hunt	Rupert Blakely Henry Bennett
1909	Mary Frances Rudolph Hamilton Moses	T. J. Weatherly
1919	Beulah Wright Birkett Williams	
1911	Louis Crow Louise Crow	
1912	D. P. Muse Helen Mae Stearns	Charles Gardiner W. C. Ware
1913	J. W. Ramsay Lilian Fortune	Dwight Crawford W. E. Huddleston
1914	H. L. Muse Margaret Crawford	J. D. Lewis W. R. Brooksher
1915	Clarence Hooper Elizabeth Autrey	Spencer Fox J. I. Cossey
1916	Sam Dudley Sally Lou Wilson	H. B. Reeves H. S. Hargis
1917	Keith Edwards Ruth Goodwin	Carroll Hester Pauline Drake
1918	John N. Hofiman Ruth Turner	Gill W. Gullledge Fred Fuller
1919	E. S. Mizell Edwin B. Walker	W. H. Robins Harold Ward
1920	Edwin B. Walker	Ray Kelly
1921	Frank T. Edwards	Frank Cargile
1922	Roy Phillips	Sam Dardenne
1923	Floyd H. Goodman	Charles Elliott
1924	Wayne McCauley	Bill Walton
1925	Blake Smith	James Thomasson
1926	John H. Elliott	Earl Dawson
1927	Joe F. Rushton	Relton McCarroll
1928	William C. Brasher	Ben F. Runyan
1929	Charles L. Deevers	Harold McCarroll
1930	J. Raymond Baine	Cecil Shuffield
1931	Nellie M. Sloan	W. L. Bell
1932	Shelby Gillette	Roy Golden, Jr.
1933	(No Annual)	
1934	Aubrey C. Halsell	
1935	Willford C. Harris	James E. Tull
1936	James C. Hobgood	William E. Mankin
1937	John Bradley	Marsh Whittington
1938	Alsey L. Holland	Paul H. Powers
1939	Cecil Saunders	Harvey Marsh
1940	Jeff Cone	T. O. Matlock
1941	Lowell Gibbs	Jack McHaney
1942	J. D. Foster	Walter Mizell
1943	Walter Mizell	Jeral Hampton
1944	Francene Lynch	Clyde McCalmon
1945	Francene Lynch	Orville Roberts
1946	Sam Phillips	Bill Keltner
1947	Mary-Beth Rudolph	Bill Keltner

Engravers of 1947

OUACHITONIAN

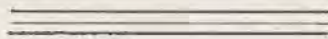


*Southwest's Foremost School Annual
Engravers*

PEERLESS ENGRAVING CO.

Peerless Bldg.

Little Rock, Ark.



IT WAS A PLEASURE

"It Was A Pleasure"

FAUSETT'S STUDIO

116 MAIN STREET — LITTLE ROCK, ARKANSAS



1. All right, *you* fix it!
2. Amen
3. You figure it out
4. We've shore worked hard
5. Bo-bo-ske-watn-datn
6. Aren't they clever?
7. I just LOVE to pop paper bags
8. We can't say it too often
9. Sail on to victory, Tigers
10. Janice, Doris and Jean
11. Well, we gotta be polite
12. We LIKE to be in pictures

1. Striking, rahther!



2. How's the perspective?



3. Tenshun!



4. A host of golden daffodils



5. We're resigned to it



6. Lost in a crowd



7. Behind bars



8. Just a paper doll



9. Tra-la-la



10. With a hey non-nie



11. Dark eyes



12. A revoltin' development



Carter's
MEN'S STORE

Featuring McGregor and
Wilson Bros. Sports Wear

Nunn-Bush Shoes

Stetson Hats

Curlee Suits in all Latest Styles
for Young Men.

Phone 20

Nick Carter, Prop.

When you want Quality
and Style

At the Lowest Possible
Price

COME TO

McCORMICK'S

Arkadelphia

Ben Franklin
Variety Store

5c to \$1.00

610 Main Street

Arkadelphia, Arkansas

Langley's Cafe

"Home of Fine Food"

Extra Selected Oysters — K. C.

Steaks — Lunches

And All Kinds of Sandwiches

Frank Langley, Prop.

Phone 218

Logan Grocer Co.

Wholesale Grocers

Prescott and Arkadelphia

Arkansas

Blue and Gold Spiral

School Supplies

COMPLIMENTS

OF

A Friend

COMPLIMENTS OF

HUMPHREY'S DAIRY

"WHERE THE BEST MILK GROWS"

PAN - AMERICAN LIFE INSURANCE CO.

NEW ORLEANS — U.S.A.

LIFE INSURANCE — ENDOWMENTS AND ANNUITIES

PAN-AMERICAN LIFE INSURANCE CO.



GARLAND RICHARDSON, GENERAL AGENT

Exchange Bldg.

Little Rock, Arkansas





CENTRAL BAPTIST THEOLOGICAL SEMINARY

KANSAS CITY 2, KANSAS

Centrally located in the "Heart of America." Easily accessible by any mode of transportation. Conveniently situated in an area filled with Baptist churches in close touch with the Seminary. Conservative and constructive in curriculum and teaching. Cooperative with Baptist leaders and programs. Courses leading to standard theological degrees. Construction of new buildings in progress, to take care of ever-increasing needs. Catalogue upon request.

Wm. W. Adams, President

KANSAS CITY 2, KANSAS

The OUACHITA BOOKSTORE

— SERVES YOU WITH —



SANDWICHES
BOTTLE DRINKS
FOUNTAIN SERVICE
BOOKS
STATIONERY
POSTAL SERVICE

A COLLEGIATE CONVERSATION—

"Where can I meet 'cha?"

"Let's make it the Bookstore."

E. L. BREWSTER, Manager

1. Perfect symmetry



2. What ho, young maid!



3. Kindergarten kiddies



4. Sunny Sunday



5. Shock's in the Shadow



6. This daily drudge



7. Into character, please



8. Complete understanding



9. Topsy-turvy



10. Camera fans



Allen Crawley

Cleaning, Pressing, Tailoring
and Hatter

513 Clinton Street — Phone 521

Arkadelphia, Arkansas

STEPHEN'S

Rexall Drugs

The Prescription Store

"Your Pastry Shop"

Pies and Cakes that are
Always Tasty — Always Fresh

King's Bakery

Hughes Tire Store

Goodyear Tires

G.E. Appliances

Phone 373

Arkadelphia

Gladden - Marbury Motor Co.

Auto Parts and Service
Petroleum Products
Garage and Accessories

Phone 64 — 8th and Clinton

Arkadelphia

Arkansas

COMPLIMENTS

OF

Nowlin Furniture Co.

BILL and BOOTS, Owners

Arkadelphia, Arkansas

DEW - ORR Department Store

Home of Red Goose
Shoes

H. L. Dew Phone 95 Herman Orr

Whorley's Jewelry Store

Hamilton — Elgin Watches
Fine Diamonds

Phone 153

703 Clinton



1. Wait a few days, Fritz!
2. Homeward bound, no fish
3. May I take your picture?
4. Not really studying?
5. Share it with us.
6. Looks familiar
7. Hi, Janet
8. Careful, Betty
9. Such royalty
10. Hi-Hat's banquet

1. Sunday best
2. "Please, kind sir"
3. Big Doc's grin might be for little Doc
4. Paul and the Bluff
5. We've seen them somewhere before
6. "Well, I—uh—meant to, but . . ."
7. Bernhardt and Barrymore
8. The three musketeers
9. Say, how often does this go on?
10. Ah-ha, romance!



"GO WEST,"

Said HORACE GREELY...



And west they went in thousands—far sighted and courageous. Out of a mighty wilderness they forged an empire—resplendent, beyond their wildest dreams.

Little did they know that in going they turned their backs on riches the like of which history has never known.

Greely would be amazed today. Gold is here!—Black—but in far greater abundance. And land—endless stretches of fertile soil—literally steeped in Bauxite, Coal, Iron, Sulphur, Lignite, Salt and Diamonds—right here in our own wonderland—the SOUTH.


To you, her future leaders, we say, "Stay South."



LION OIL COMPANY
El Dorado, Arkansas

T. H. BARTON, President

Our Services To You Include - - -

A decorative graphic consisting of three vertical parallel lines of varying thickness, positioned to the left of the list of services.

BIBLES

BEST BOOKS OF ALL PUBLISHERS

HYMNALS

CHURCH SUPPLIES

VISUAL AIDS

CHURCH LIBRARIES

SPEED-O-PRINT SUPPLIES

COMMUNION SETS

CHURCH MUSIC

BAPTIST BOOK STORE

303-5 W. CAPITOL AVENUE

LITTLE ROCK, ARKANSAS



1. Oops, wrong view!
2. Where or when
3. Don't let 'em fool you, Ray Baby
4. Bosom buddies
5. Now, Jo, you leave them alone
6. Who's it for, Sue?
7. Love and a picture book
8. Lucky Nelda
9. We won't hurt you, Jo Betty
10. Must have had a letter

1. Heavenly voices
2. There I am!
3. Southern personality
4. Oh! I entreat you!
5. Arf-arf
6. Petite Mrs.
7. Not very impressed
9. Gala affair
9. Flower, Mlle.
10. Big wheel
11. Photographer's models
12. The gay past



1



2



3



4



5



6



7



8



9



11



10



12

" TAXI "

Call 236 Day or Night

For Prompt, Dependable
Service

W. E. GLOVER, OWNER

Veteran Owned

Prescriptions Filled With Care

Lee's Drug Store

Phone 138 Arkadelphia

When in Little Rock

LISTEN TO — — —

"Lido Presents"

With

BILL DEATON

Saturday Mornings — 10:15 KGHI

Fuller's Drug Store

"A Complete Line of Drugs
And Toilet Articles"

Phone 8 Arkadelphia, Ark.

Houser Motor Service

Washing — Lubrication — Tires
Batteries

Packard Sales and Services

Magnolia Products

Phone 143 Arkadelphia, Ark.

Arkadelphia Cleaners

W. G. STEARN, Owner

"The Particular Cleaner

For Particular People"

Phone 159 8th and Main

Clark County Appliance Co., Inc.

Decca, Capital, R.C.A. Victor,

Columbia Records

Household Appliances

9th and Clinton Phone 217

Compliments Of

J. H. Lookadoo

Compliments Of
Southern Ice Co.

Air Conditioned Refrigerators
and Crystal Clear Ice

CALL 202

Arkadelphia

Arkansas

Arkansas Gazette
Agency

Magazines Cigars and Tobacco
Fishing Tackle

N. L. LAGLEY, AGENT

Phone 192

915 7th St.

Walker Shoe Shop
and Paint Store

Featuring Lamac Weld or
Invisible Soling

Mound City Paints and Varnishes

WALL PAPER

623 CLINTON STREET

Arkadelphia Beverage
Company

HOME OF



CALIFORNIA ORANGE

Roscoe and Vines

Grocery and Service Station

"Owned and Operated by
College Students"

10th and Caddo

Phone 313

Shaw's Gardens

"Flowers that Please For All
Occasions."

Green Houses and Floral Shop

Member T.D.S. 121 Clinton Street

Phone 580

COMPLIMENTS OF

Randolph Hotel

El Dorado, Arkansas

WOMMACK'S

TEXARKANA, U. S. A.



1. Tres bien!
2. What's the dope, chum?
3. The mighty hunter
4. Palsy-walsy
5. Huge joke
6. Where's Blue-beard?
7. To get down to cases
8. Ravishing Ray
9. Sassy party
10. Here I am, Juliet
11. Funny boy!
12. Shining hour
13. Reece's girl
14. Sweet Edith



For YOUR Generation,
as well as ours . . .

Perpetual Timber Supply!

Selective harvesting . . . sustained yield! These are the factors which insure perpetual timber supply for America's future generations. And these are the governing factors at Crossett.

Nearly 50 years ago, when the Crossett Companies were founded, a systematic program of selective harvesting and reforestation was begun. For every tree cut, at least another was to grow.

Then, that waste might be reduced to a minimum, extensive research was invested in the utilization of forest by-products. Out of this came Crossett's kraft paper mill and chemical plant, with other potentials still in the making, to expand the cycle of total use.

So it is as a completely integrated forest products enterprise that Crossett looks ahead . . . integration which assures future generations a perpetual timber supply while serving ours today.

THE CROSSETT COMPANIES, CROSSETT, ARKANSAS



Dew kissed

A glass brimming with the juice of plump, sun-ripened and dew-kissed tomatoes adds the final touch of the thoughtful host. All Sexton juices are fashioned to the same pattern. We gently press the fruit to hoard every precious vitamin in the juice—and retain the rich flavor of the tree-ripened fruit.

JOHN SEXTON & CO. 1947

1. Choir devotionals



2. Roommates



3. Thank you, thank you



4. Where ya goin'?



5. King and Queen of Hearts



6. Say, Jean?



7. Looking for something?



8. High-Hats and mascot



9. It's Sunday again



10. Take a rest in the sun



11. Tell 'em, Jim!



12. Three inseparables



13. Four inseparables



14. They guide the juniors



15. I met her on Monday . . .!





1. Billy Sue and Squeaky
2. May we, too?
3. Before the lecture
4. Just a-playin'
5. Between classes at the book store
6. Guess who!
7. Fashion says skirts are getting longer
8. What's the trouble, Jim?
9. The Lady and the Tigers
10. Jerry draws a crowd
11. "Three little maids from school . . ."
12. Just fits, eh, Larry?
13. Our little prima donna
14. Sweater girls

ELKHORN BANK AND TRUST COMPANY

ARKADELPHIA ARKANSAS

1884 — 1947

A FRIEND OF OUACHITA

YOUR ACCOUNT APPRECIATED

Member of F.D.I.C and Federal Reserve System

NICKELS, DIMES AND QUARTERS MAKE DOLLARS

THEY ALSO BUY MORE

AT

STERLING'S

5c - 10c and 25c Store

Arkadelphia

E. J. BOWDEN, Manager

Arkansas

COMPLIMENTS OF

J. C. PENNEY COMPANY

All the time in '47 Depend on Penney's

1902 — 1947

MR. & MRS. GRANT R. ALLEN

Caddo Hotel — Dining Room

PHONE 18

Arkadelphia Bus Station

PHONE 141

CONGRATULATIONS, OUACHITONIANS!

COMPLIMENTS OF

THE NEW THEATRE

*Motion Pictures Are Your Best Entertainment
Attend Regularly - You Are Always Welcome!*

1. My, my, my!



2. Hank, Claude and Earl



3. The sun shines bright



4. Sue and Shifty



5. More Red Shirts



6. Smilin' Sarah



7. Distinguished visitor



8. This must be the choir



9. Jim Ed tells a joke



10. Looking for a ride



11. No cutting, please



12. Why so webe-gone



13. Cupid



14. I am Napoleon





1. Big Boy
2. Aiming for Conover
3. Someone has an admirer



4. Oh, what a beautiful morning!
5. Enjoying the scenery
6. Down but not out
7. Peggy—an aerial shot

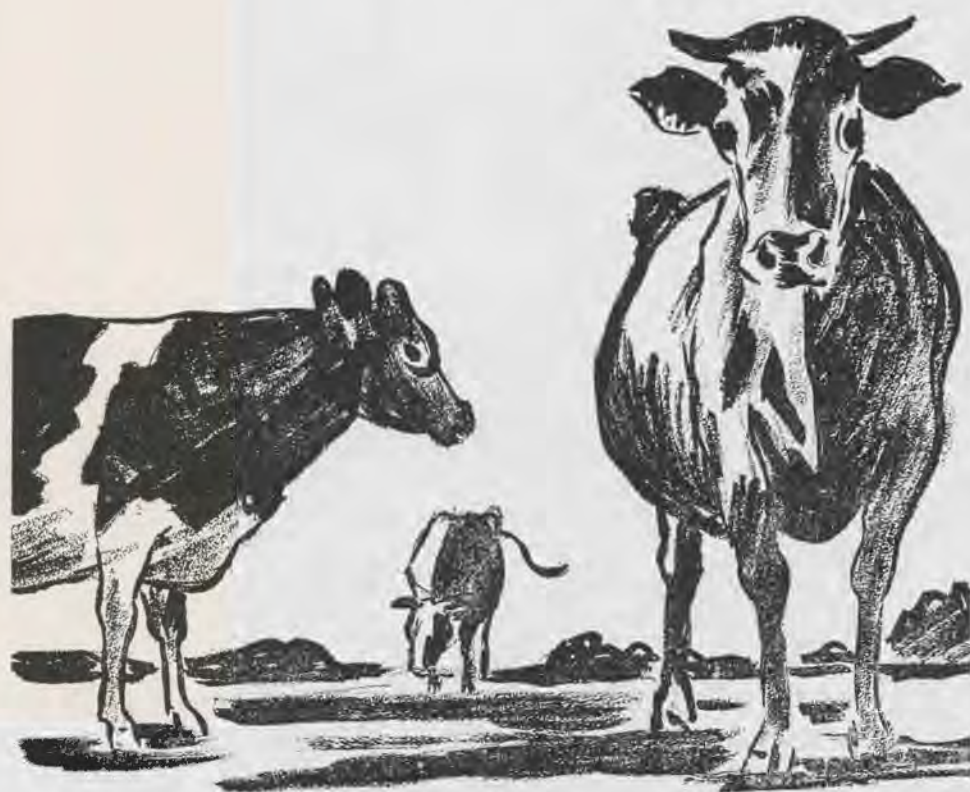


8. Genius at work
9. "All work and no play"



10. John and Hazel
11. Studying
12. Before the take-off
13. Elliott and Jolly





J. LEE PORTER — GRAIN AND FEED

6th AND SPRING STREET

IF IT'S

BORDEN'S

ICE CREAM

IT'S GOT TO BE

GOOD

In Printing . . .

THERE ARE MANY REASONS WHY
SUCCESSFUL ANNUALS REQUIRE
THE SERVICES OF EXPERIENCED
AND EXPERT CRAFTSMEN.

THE HURLEY COMPANY, INC.

HAS THESE SERVICES AND
THE MOST NECESSARY COMPON-
ENTS OF ALL REALLY FINE BOOKS
. . . INCLUDING AN ORGANIZATION
WHICH HAS HAD MORE THAN 15
YEARS EXPERIENCE IN PRINTING
FINE BOOKS . . . FINE EQUIPMENT
. MODERN AND COMPLETE.
PRICES REPRESENTING MAXIMUM
IN VALUE.

CAMDEN
ARKANSAS

Merchants & Planters

Bank & Trust Co.

THE BANK OF
FRIENDLY SERVICE

MEMBER F.D.I.C.

Arkadelphia, Arkansas

COMPLIMENTS

OF

CLARK
COUNTY
LUMBER
COMPANY

Arkadelphia, Arkansas

BLEVINS OIL and IMPLEMENT CO.

"IT'S A BETTER BUY AT BLEVINS"

INTERNATIONAL ——— MOTOR TRUCKS

FARMALL — TRACTORS, and Complete line of farm equipment

DIAMOND D-X—Lubricated Gasolines

DIAMOND D-X—MOTOR OILS

(WHOLESALE AND RETAIL)

7th and Walnut

——— AND ———

8th and Clinton

CO - ED CAFE

"THE CENTER OF TOWN — — —

WHERE YOUR FRIENDS MEET AND EAT"

DINNERS

SANDWICHES

SHORT ORDERS

Arkadelphia, Arkansas

Phone 45

COMPLIMENTS OF THE
**SOUTHWEST ARKANSAS BUTANE GAS
AND APPLIANCE CO.**

811 Clinton

Phone 169

Arkadelphia

SOUTHERN STANDARD

— Since 1868 —

SUPERIOR PRINTING

Recital and Social Programs and Invitations

— Printers Of —

THE OUACHITA SIGNAL

THE OUACHITA RIPPLES

THE OUACHITA COLLEGE CATALOG

WE DEDICATE THIS SPACE AS A COMPLIMENT TO ALL
OUACHITA COLLEGE
ITS FACULTY, STUDENTS AND FRIENDS
MAY YOU REMEMBER US WITH KIND THOUGHTS AS
YOU GO YOUR WAY THROUGH LIFE

ROYAL and CO - ED THEATRES

CECIL CUPP, OWNER

Our New and Unusual Savings Plan - - -

\$100.00 Monthly for loss of time from Sickness—Payable from the first day
(limited to 12 months under any one claim)

\$100.00 Per Month additional if confined to hospital—This benefit limited to
3 months only.

\$100.00 Monthly for loss of time from Accident — Payable from the first
day for life.

\$100.00 Per month additional if confined to a hospital—for the first 100
months.

\$20.00 Monthly to your family if you do not live—for the first 100 months.
\$2750.00 Total Cash to you at Age 65. \$2,000 Guaranteed. \$750 Accumulated
Dividends.

\$2257.60 Total Deposits.

492.40 Total profit even if you are never sick or hurt.

24.64 Average annual profit—even if you are never sick or hurt.

112.88 Annual deposit at age 21—(\$9.81 Monthly deposit).

Men do get sick or hurt—When they do they need money.

Men do get old—When they do they need money.

Men do die—When they do families need money.

C. L. DURRETT, GENERAL AGENT
PACIFIC MUTUAL LIFE INSURANCE COMPANY

CONGRATULATIONS SENIORS
FROM

STUDENT CLEANERS

"WE DO YOUR DIRTY WORK"



REVEREND AND MRS. E. W. LLOYD



WHOLESALE DISTRIBUTORS

RITCHIE GROCER COMPANY

HOPE, ARKANSAS

SCOTT - MAYER COMMISSION COMPANY

LITTLE ROCK AND HOT SPRINGS, ARKANSAS

Wholesale Dealers In

FOREIGN AND DOMESTIC

Fruits -- Produce -- And Groceries

Distributors of

Libby Canned Foods

We Search the Markets of the World for Good Things to Eat!

ARKANSAS BAPTIST Readers are Arkansas Baptist Leaders

THE ARKANSAS BAPTIST

(Official Baptist State Paper)

Should be Read in every Baptist Home in Arkansas

C. E. Bryant (Ouachita, 1934-36) Editor
Ione Gray (Ouachita, A.B., 1940), Editorial Assistant

McWILLIAMS STATIONERY COMPANY

"SUPPLYING EVERY OFFICE NEED"

222 West 3rd St., Texarkana, Ark.-Tex. 338 Central Ave., Hot Springs, Ark.

NATIONAL DISINFECTANT COMPANY

HOUSTON

DALLAS

SAN ANTONIO

Sanitation Supplies

FOR EVERY CLEANING REQUIREMENT

Kreb's Bros. Supply Co.

COMPLETE EQUIPMENT
FOR
HOTELS — CLUBS — CAFES
and
HOSPITALS

413-15 West Fifth Avenue

Little Rock, Arkansas

Phone 6133 Long Distance 140

COMPLIMENTS

OF

Steve E. Woodard

Representing

C. J. HORNER COMPANY

Wholesale

PRODUCE AND GROCERIES



NORTON HALL

**THE SOUTHERN BAPTIST THEOLOGICAL
SEMINARY**

ELLIS A. FULLER, PRESIDENT

LOUISVILLE, KENTUCKY

— BOOKS —

Office Supplies and Furniture

Allsopp & Chapple

307 Main

Little Rock, Arkansas

"Arkansas' Largest Book Store—

—Since 1900"

Aubrey Blevins Sales
Company

Ford Ferguson Tractors
Hudson Cars, Reo Trucks
Pennsylvania and Gillette Tires

5th & Clinton

Arkadelphia

Phone 67

Carpenter's
Flower Shop

Flowers For All Occasions

Phone 146 — All Hours

MEMBER F.T.D.

NICHOL'S

We wish to reestablish our former reputation in good food
and service in our new colonial eating place.

We have a private dining room for banquets and parties.

SIX BLOCKS WEST ON PINE STREET

THE MILKSHAKE

"ICE CREAM ANYWAY YOU LIKE IT,
EAT YOUR MILKSHAKE WITH A SPOON"

SANDWICHES — FOUNTAIN SERVICE — TOBACCOS

"WE CATER TO COLLEGE TRADE"

One Block West of Royal

Open Late at Night

LELAND HALL, Manager