

Ouachita Baptist University

## Scholarly Commons @ Ouachita

---

OBU Yearbooks: The Ouachitonian

University Archives

---

1942

### The Ouachitonian 1942

Ouachitonian Staff

*Ouachita Baptist University*

Follow this and additional works at: <https://scholarlycommons.obu.edu/yearbooks>



Part of the [Higher Education Commons](#), [Organizational Communication Commons](#), and the [Public Relations and Advertising Commons](#)

---

#### Recommended Citation

Ouachitonian Staff, "The Ouachitonian 1942" (1942). *OBU Yearbooks: The Ouachitonian*. 51.  
<https://scholarlycommons.obu.edu/yearbooks/51>

This Book is brought to you for free and open access by the University Archives at Scholarly Commons @ Ouachita. It has been accepted for inclusion in OBU Yearbooks: The Ouachitonian by an authorized administrator of Scholarly Commons @ Ouachita. For more information, please contact [mortensona@obu.edu](mailto:mortensona@obu.edu).

RESERVE

1942

# Quachitonian



QUACHITA COLLEGE, ARKADELPHIA, ARKANSAS

Published by  
the students of  
**Ouachita College**  
Arkadelphia, Arkansas

---

**J. D. FOSTER, Editor**

---

**WALTER MIZELL, Bus. Mgr.**

---



T  
H  
E  
I  
9  
4  
2



*Quachiton*





*ian*

# O U A C H I T A

*Ouachita, we sing thy praises,*

*Thy beauty, thy power, thy fame,*

*Each loyal heart up-raises*

*A cheer to thy glorious name*

*O - U - A - C - H - I - T - A.*

*Here's good luck to Ouachita,*

*May all her skies be gay,*

*Give a cheer for Ouachita*

*A loud hip-hip-hooray,*

*O - U - A - C - H - I - T - A.*

*Ouachita, thy sons and daughters,*

*Shall carry thy flag unfurled,*

*For none shall e'er surpass thee,*

*The Queen of the College World*

*O - U - A - C - H - I - T - A.*

*Here's good luck to Ouachita,*

*May all her skies be gay,*

*Give a cheer for Ouachita,*

*A loud hip-hip-hooray,*

*O - U - A - C - H - I - T - A.*



Dr. J. L. Dorroh

We, the Staff of The 1942 OUACHITONIAN, do respectfully dedicate this volume to Dr. J. L. Dorroh, Professor of the Mathematics and Physics Department of Ouachita College. His quiet, friendly attitude and sincere cooperation has made him one of the outstanding instructors in this college.

DEDICATION



## Behind the Scene . . .

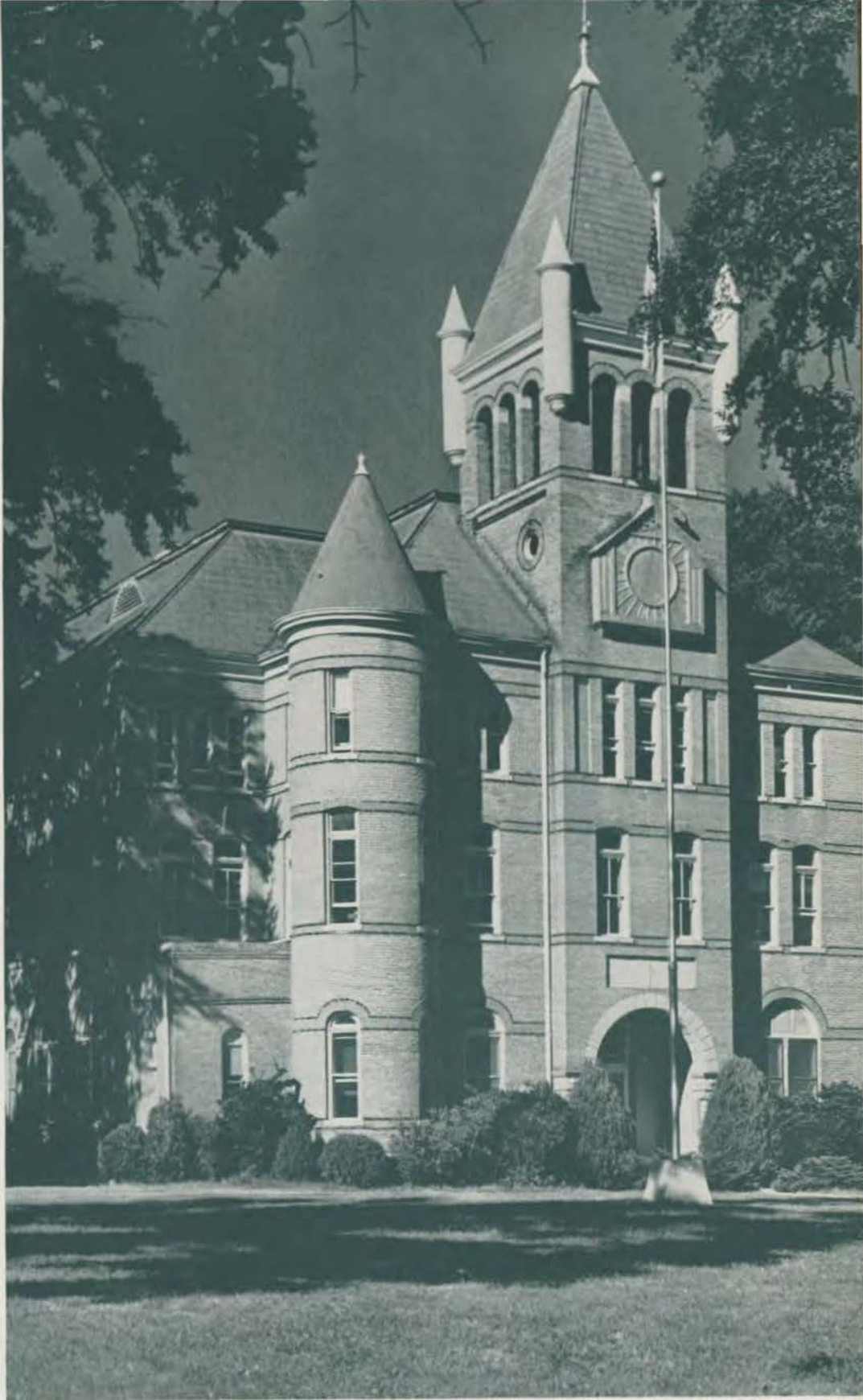


To those who have graciously helped in the publication of this annual, we wish to express our sincere thanks. For the long, tedious hours of pounding a typewriter, for the brain-racking days of compiling lists, checking and re-checking, and for all the other many things that had to be done, we want to express our deepest appreciation to our fellow workers. We have attempted to give you, the majority of students, an annual you will like and enjoy reading many times. If we have succeeded in this task, the sleepless nights spent, gallons of coffee gulped, and pounds of aspirins consumed will not have been in vain.

Of course there will be a few insignificant guys and gals who will beat a path to our door for some minor detail of no more importance than a misspelled name; others will harp because they are not prominently featured in the snapshot section, or not mentioned in the calendar of events. May we take this opportunity to express our apologies to these egotistical individuals, and request that they be as lenient as their physical make-up will allow.

So to you, the majority, we are happy to give to you the 1942 OUACHITONIAN, to have and to hold, and to keep for posterity. We will never forget the victorious football season, the specials, days of cramming before mid-term exams, the grand showing our boys made in basketball, the friends we have made this year, and of course, December 7, 1941.

F  
A  
C  
U  
L  
T  
Y



*Administration Building*







# P R E S I D E N T



DR. J. R. GRANT

The administration of Ouachita College can pride itself in having the leadership of such a man as Dr. J. R. Grant, whose effortful nine years here resulted this year in the admittance of Ouachita into the North Central Association of Colleges. An untiring worker who gives special attention to the task at hand, has long had the admiration and respect of those who know him. President here since 1933, Dr. Grant has led Ouachita in its rapid growth and development which has reached a crowning climax with the admittance into North Central Association.

Lack of space here would prevent the listing of Dr. Grant's many achievements or an account of Ouachita's growth during his administration, but those who have followed his eventful career know that it has been a brilliant one and that the recognition he has won is well deserved.

# FACULTY



K. D. ARCHIBALD  
M. A.

*Associate Professor of Science  
(Biology)*

B. A., 1933, Denison University;  
M. A., 1934, Ohio State University;  
All requirements met for Ph. D. De-  
gree with the exception of disserta-  
tion.

NEWELL BLAKELEY

*Instructor in Speech*

Working toward Bachelors Degree  
in Speech in Ouachita College.



THELMA ARIMINTA BATSON  
B. M.

*Assistant Professor of Fine Arts  
(Voice, Theory, Chorus)*

Artist Diploma 1920, Cincinnati  
Conservatory of Music; Summer 1922,  
Cincinnati Conservatory; B. M., 1928,  
Chicago Musical College; Summer  
'38 and '40, University of Colorado;  
Pupil of Ferry Lulek, Thomas James  
Kelley, and the late Herbert Withers-  
poon, Theory with Leighton, Ed  
Stillman Kelley and Dunkelberger.

EVELYN BULLOCH BOWDEN  
B. A., M. M.

*Assistant Professor of Fine Arts  
(Piano and Theory)*

Diploma in Piano and Organ, 1930;  
1931, B. M.; 1932, B. A., Ouachita  
College; Julliard School of Music,  
New York; Private instruction with  
James Friskin; Theory with Guy  
Maier and Mabelle Glenn, 1934; M.  
M., 1940, American Conservatory,  
Chicago; Private instruction under  
Rudolph Reuter, 1936.



ESTELLE McMILLAN BLAKE  
M. A.

*Associate Professor of Humanities  
(English)*

B. A., 1887, Texas Teachers Col-  
lege; M. A., 1932, Ouachita College.

WESLEY WALKER BRADSHAW  
M. A.

*Director of Physical Education  
for Men*

B. A., 1932, Baylor University; M.  
A., 1940, Ibid. One summer's study  
at Western at Gunnison, Colorado.



# FACULTY



E. L. BREWSTER

*Manager, Ouachita Book Store*



SGT. HERMAN F. BRYAM  
D. E. M. L., U. S. A.

*Assistant Instructor in Military  
Science and Tactics*



FRANCES M. CRAWFORD  
B. A.

*Registrar*

B. A., B. M., 1918, Ouachita College; one summer's study at Columbia University, and one term's graduate study at Peabody College.

RALPH CUSTER DAILY  
Ph. D

*Professor of Social Science  
(History and Political Science)*

B. A., 1923, Erving College; M. A., 1927, University of Nebraska; Ph. D., 1929, Indiana University.

JEWELL DIXON  
M. A.

*Assistant Dean of Women and  
Instructor in English*

B. E., 1929, Illinois State Normal University; M. A., 1939, University of Illinois.

JOE LEE DORRCH  
Ph. D.

*Professor of Science  
(Mathematics and Physics)*

B. A., 1926, University of Texas; M. A., 1927, University of Texas; Ph. D., 1930, University of Texas.





# FACULTY



CLAUDE L. DURRETT  
B. A.

*Instructor in Salesmanship*  
B. A., 1904, Ouachita College.



PAUL RUSSELL GODFREY  
M. A.

*Assistant Professor of Chemistry*  
B. A., 1938, William Jewell College; M. A., 1940, Purdue University.



LIEUT. COLONEL H. J. FARNER  
U. S. A.

*Professor of Military Science and Tactics*

ELIZABETH GREEN  
M. S.

*Director of Health and Physical Education for Women*

B. S., 1936, George Peabody College for Teachers; M. S., 1941, Louisiana State University.

PATRICIA IRBY GUNN  
M. S.

*Associate Professor of Science (Home Economics)*

B. S. H. E., 1920, University of Arkansas; M. S., 1930, University of Arkansas; Graduate Dietitian, Peter Bent Bringham Hospital, Boston, Mass.

HOWARD HALSELL  
A. B.

*Student Secretary*

B. A., 1939, Ouachita College; Attended Southwestern Seminary, Fort Worth, Texas.



# FACULTY



ALBERTA E. HARRINGTON  
M. A.

*Associate Professor of Humanities  
(English)*

B. A., 1929, Ouachita College; M. A., 1938, Louisiana State University.



LIEUT. COL. DONALD HENLEY  
U. S. A.

*Professor of Military Science  
and Tactics*



THOMAS HEARD JONES  
M. A.

*Associate Professor of Social Science  
(Economics)*

B. A., 1933, Louisiana Polytechnic Institute; M. A., 1936, University of Arkansas.

MRS. CHARLES LUCK  
R. N.

Graduate of Baptist State Hospital  
—School of Nursing, 1933.

WALTER MCGUFFEE  
B. A.

*Professor of Business Administration*

B. A., Mississippi College, 1936;  
M. B. A., 1940, University of Houston;  
Studied toward Ph. D. in Business Administration,  
Columbia University, 1940-'41.

CAPTAIN JOHN MAURER  
Infantry Reserve, U. S. A.

*Assistant Professor of Military  
Science and Tactics*



# F A C U L T Y



AMMON BROWN MEDLEN  
M. A.

*Assistant Professor of Science  
(Biology)*

B. A., 1930, Baylor University; M. A., 1932, Baylor University.



SUE MYRTLE W. MEDLIN  
M. A.

*Instructor in Fine Arts  
(Piano and Theory)*

*Instructor in Business Administration  
(Shorthand and Typing)*



LIVINGSTON HARVEY MITCHELL

*Professor of Fine Arts  
(Piano and Theory)*

Piano student of Adolph Koellins, Chicago Musical College; Kagner Suayne, New York City; Emil Leibling, Chicago; Maurice Marghawski, Paris; Frank Mannheinner and Tobias Matthay Piano School, London; Summer term 1928, '29, '31; Active member of American Matthay Association..

MARY MORRIS  
B. A.

*Secretary to President*

B. A., 1940, Ouachita College.

LEONARD PRICE  
B. A.

*Business Manager*

B. A., 1939, Ouachita College.

MRS. CHARLES PRICKETT

*College Nurse for Women*





# FACULTY



**EUGENE ALMARINE PROVINE**  
Ph. D.

*Professor of Science  
(Chemistry)*

B. A., 1923, Mississippi College;  
M. S., 1925, Louisiana State University;  
Ph. D., 1936, Ohio State University.



**BETH REMLEY**  
B. S.

*Librarian*

B. S., George Peabody College  
Library School.



**GENE HENRY RUDOLPH**

*Assistant Professor of Humanities  
(Speech)*

Diploma in Expression, Henderson-Brown College; Post-graduate certificate, Henderson State Teachers College; University of Arkansas; Northwestern University; Private pupil of William Hubert Graener, of Yale Divinity School; University of Wisconsin.

**LUCILLE SILLIMAN**  
B. S.

*Assistant Professor of Science  
(Home Economics)*

B. S., Ouachita College; All requirements met for M. S. Degree with exception of thesis.

**JAMES CLEVELAND STEWART**  
M. A.

*Associate Professor of Social Science  
(Education)*

B. A., 1926, M. A., 1927, Baylor University; one summer's study at University of Arkansas.

**MRS. J. C. STEWART**

*Matron, Men's Dormitory*

Diploma in Expression, Ouachita College, 1904.



# F A C U L T Y



DALE F. TAYLER

*Bookkeeper*



ROBERT THOMPSON

*Dining Hall Manager*



LOWELL TAYLOR WALLACE

Th. D.

*Associate Professor of Social Science  
(Religious Education)*

B. A., 1918, William Jewell College; M. A., 1924, Mercer University; Th. B., 1921, Southwest Baptist Theological Seminary; Th. D., 1923, Ibid.

WILLIAM ISAAC WALTON

B. A.

*Coach of Athletics*

B. A., 1924, Ouachita College.

J. J. WEBB

*Superintendent of Buildings  
and Grounds*

MRS. H. L. WINBURN

B. A.

*Dean of Women*

B. A., 1899, Lamberth College, Jackson, Tennessee.



# FACULTY



OTIS WEBSTER YATES  
Ph. D.

*Professor of Social Science  
(Religious Education)*

B. A., 1914, Wake Forest; Th. M., 1917, Southern Baptist Theological Seminary; Ph. D., 1938, George Peabody College for Teachers.



AUBREY M. WITHERINGTON

*Professor of Social Science  
(Education)*

B. A., 1923, Union University; M. A., 1925, George Peabody College for Teachers; Ph. D., 1934, George Peabody College for Teachers.

## NOT PICTURED

USHER ABELL  
B. M. Ed.

*Assistant Professor of Fine Arts  
(Violin, Band, Orchestra, Theory)*

B. M. Ed., 1938, Murray State Teachers College; First Violin, Arkansas State Symphony, 1940; Concert Master Arkansas State Symphony, 1942.

CARMETA DRUMMOND  
M. A.

*Assistant Professor of Fine Arts  
(Art)*

B. A., 1938, Texas State College for Women; M. A., 1940, Texas State College for Women.

MRS. D. H. ORROK  
M. A.

*Director of Physical Education  
and Health for Women*

B. A., 1935, Ouachita College; M. A., 1938, Peabody College.

MRS. USHER ABELL  
B. M. Ed.

*Instructor in Fine Arts  
(Public School Music, Theory)*

B. M. Ed., 1939, Murray State Teachers College; B. S. in Education, University of Tennessee Junior College 1936, 1937. Viola, Arkansas, State Symphony.

DOUGLAS HALL ORROK  
Ph. D.

*Associate Professor of Humanities  
(French and German)*

B. A., 1928, Amherst College; M. A., 1929, Columbia University; Ph. D., 1935, Columbia University.

RICHARD C. PETTIGREW  
Ph. D.

*Professor of Humanities  
(English)*

B. A., 1925, Furman University; M. S., 1926, University of North Carolina; Ph. D., 1930, Duke University.





WALLIS HALL



WEST HALL



BOY'S DORMITORY

C  
L  
A  
S  
S  
E  
S



*Cone-Bottoms Hall*

# CLASS OFFICERS

1  
9  
4  
2



JOHNNY MOWREY  
*President*

JANICE ROGERS  
*Vice-President*

MARJORIE ALLEN  
*Secretary*

BILL ABBOTT  
*Treasurer*

The time has come when the Seniors of '42 are to leave the portals of Ouachita to go into whatever ventures that are out before them. Some of them are destined to go into the Armed Services of our country; others will enter professions for which they have been preparing these four years; still others will find their greatest delight in merely loafing. To whatever field of endeavor they enter, may we wish them the greatest success that might possibly be theirs for a successful future!



# SENIORS

WILLIAM WOOD ABBOTT, B. S. . . . . Hampton

*"To reach your goal this advice is sound  
If you can't go over or under, go around."*

Major: Biology. Minor: Chemistry.

Sigma Alpha Sigma '39, '40, '41, '42; First Lieutenant R. O. T. C. '42; Treasurer of Sophomore and Senior Classes; Assistant Business Manager Signal '41; Sophomore Editor of Ouachitonian '40.



CLARENCE ADDIS, JR. . . . . Van Buren

*"He doesn't say much, but neither did Lincoln."*

Major: Biology. Minor: Chemistry.

Chemistry Club '40, '41, '42; Biology Lab Assistant '41, '42; Sigma Alpha Sigma '42.



MARJORIE ALLEN, B. A. . . . . Bradley

*"The Queenly Virtue of Juno,  
The Beauty of Venus,  
The Wisdom of Minerva."*

Major: English. Minor: Speech.

E. E. E. '39, '40, '41, '42; College Beauty '39, '40, '41, '42; College Choir '39; Glee Club '39; Piano Class '39, '40, '41, '42; Vice-President Y. W. A. '41, President '42; Battalion Sponsor '40; Dramatic Club '40, '41, '42; English Honor Society '41, '42; Sophomore Class Secretary '40; Senior Class Secretary '42; Who's Who in American Colleges '42.



BERNARD ANDERSON, B. S. . . . . North Little Rock

*"Men, like bullets, go farthest when they  
are smoothest."*

Major: Chemistry. Minor: Math.

Transfer from Tech '41; Red Shirts '41, '42; "O" Association '41, '42; Math Honor Society '41, '42; Chemistry Club '41, '42; Math Lab Assistant '41.



# SENIORS



FLORENE BAKER, B. A. . . . . Fort Smith

*"To know her better is one's desire."*

Major: Political Science. Minor: Math.

Math Honor Society '41, '42; International Relations Club '39, '40, '41, '42; English Honor Society '41, '42; Y. W. A. Cabinet '41.



HAROLD WOODROE BALDWIN, B. A. . . . Hot Springs

*"And he's a jolly good fellow!"*

Major: Social Science. Minor: Biology.

Band '39, '40, '41, '42; Red Shirts '39, '40, '41, '42; President '41; Choir '39; Yell Leader '41, '42; Campus Who's Who '41, '42; International Relations Club '39, '40, '41, '42; Track '40, '41; Student Center Committee '42; Biology Laboratory Assistant '39; First Lieutenant R. O. T. C. '42.



MRS. THELMA BLEIDT BANKS, B. A. . . North Little Rock

*"Loved by all in general but one in particular."*

Piano Class '40, '41, '42; Reporter '42; Physical Ed. Club '40, Reporter '40; Vice-President '41; W. C. F. '41, '42; Ripples Staff '41.



TRACY H. BARRETT, JR., B. S. . . . . Green Forest

*"Ever loyal, ever true,  
To the task he has to do."*

Major: Chemistry. Minor: Math.

Chemistry Club '40, '41, '42; Camera Club '41; Math Honor Society '41, '42; Ouachitonian Staff '41, '42; Second Lieutenant R. O. T. C. '42.

# SENIORS

JOHN BASINGER, B. A. . . . . Mulberry

*"He's an earnest fellow with a lofty ideal."*

Major: Bible. Minor: English.

Ministerial Association '39, '40, '41, '42.



PAUL BOWLIN, B. A. . . . . Arkadelphia

*"When School and Matrimony Clash,  
Matrimony wins."*

Major: Social Science. Minor: Education.

Sigma Alpha Sigma '41, '42; International Relations Club '40, '41, '42; C. A. A. '41; First Lieutenant R. O. T. C. '42; Rifle Club '41, '42.



JAMES W. BRIDGES, B. A. . . . . Little Rock

*"Never an idle moment when Bridges is around."*

Major: Social Science. Minor: Education.

Ouachita Players '38, '39; International Relations Club '38, '39, '40, '41; First Lieutenant R. O. T. C. '41, '42; Ouachita Flyers '41, '42.



HOLLAND BROWN, B. A. . . . . Benton

*"Quiet at times, noisy at times  
But always a jolly good fellow."*

Major: Political Science. Minor: English.

Red Shirt '40, '41, '42; Who's Who in American Colleges '41, '42; President of Junior Class '41; International Relations Club '40, '41, '42; First Lieutenant in R. O. T. C. '42; Campus Who's Who '42.





# SENIORS



LOUISE BURNS, B. A. . . . . Magnolia  
DIPLOMA IN SPEECH

*"None named her but to praise,  
She proved her ability through actions."*

Major: Speech. Minor: English.

Ouachita Players '39, '40, '41, '42; Vice-President '40, '41; Secretary '42; Y. W. A. Vice-President '40; State Champion Women's Debate '39; Twice Winner Millsapps Debate Tourney '39, '40; State Oratory Champion '39; Rank of Excellent in National Pi Kappa Delta Tournament '40; Pi Kappa Delta '39, '40, '41, '42; Vice-President '40; Alpha Psi Omega '40, '41, '42; President '42; Ripples Staff '41, '42; Ouachitonian Staff '41, '42; Senior Class Reporter '42; Secretary Student Body '42; Who's Who in American Colleges '42; Cadet Sponsor R. O. T. C. '42.



MARTIN BURNS, B. M. ED. . . . . Magnolia

*"There is no substitute for thorough-going,  
ardent, and sincere earnestness."*

Major: Music. Minor: Music Theory.

B. S. U. President '41; Piano Class '41, '42; Band '39, '40, '41, '42; Assistant to Director '40, '41, '42; Symphonic Orchestra '41, '42; Arkadelphia Symphony '42; Cadet Captain R. O. T. C. '42.



CAROLYN JANE CARPENTER, B. S. . . . Arkadelphia

*"Said to be a thief among hearts."*

Major: Home Economics. Minor: Science.

Kewpie Klub '39, '40, '41, '42, Chief '42; Home Economics Club '39, '40, '41, '42; R. O. T. C. Sponsor '39; Football Maid '40; Secretary of Student Body '41; Senior Representative of Student Council '42.



HURLEY CARTER, B. A. . . . . Warren

*"My heart is whole, my fancy free,  
Run along, little girls, don't bother me."*

Major: Political Science. Minor: Education.

International Relations Club '40, '41, '42, Treasurer '42.

# SENIORS

JACK CHITWOOD, B. A. . . . . Magazine

*"Music washes away from the soul  
The dust of every day life."*

Major: Piano. Minor: English.

Piano Class '39, '40, '41, '42; Secretary '41; Rifle Club '39, '40, '41, '42; Secretary '42; Rifle Team '39, '40, '41, '42; President of Da Capo Society '41.



DE LOIS CURRY, B. A. . . . . Smackover

*"She always has a song for the dark days."*

Major: Piano. Minor: Business.

Piano Class '39, '40, '41, '42; Choir Accompanist '39, '40, '41, '42; Girl's Trio '39, '40; Quartet '40, '41; Y. W. A. '39, '40, '41, '42.



BETTY CURTIS, B. A. . . . . Texarkana

*"Ambitious, persistent, successful."*

Major: History. Minor: French.

Transfer from Texarkana Junior College, '40; Math Honor Society '41, '42; International Relations Club '41, '42; Vice-President '42.



BETTY FRAME DAVIDSON, B. A. . . . . Tillar

*"What she wishes to do or say,  
Is always most discreet and gay."*

Major: Piano. Minor: Education.

College Choir '39; Piano Class '39, '40, '41, '42; President '40; French Honor Society '39; Charter Member Physical Education Club '40, '41, '42, Secretary '40, Vice-President '42; W. C. F. '41, '42, Reporter '42; Junior Carnival Queen '41; Maid to Homecoming Queen '42; College Who's Who '42.



# SENIORS



D. W. DEERE, B. A. . . . . Arkadelphia

*"One who has every right to succeed."*

Major: Bible. Minor: History.

Transfer from Magnolia A. & M.; Ministerial Association '39, '40, '41, '42; Life Service Band '39, '40, '41, '42.



ROYCE DORRIS, B. S. . . . . Dermott

*"The man recovered from the bite.  
It was the dog that died."*

Major: Chemistry. Minor: Biology.

Chemistry Club '39, '40, '41, '42.



RAYMOND EARLY, B. A. . . . . Fordyce

*"Honest and sincere in every task he doeth."*

Major: Bible. Minor: History.

Ministerial Association '39, '40, '41, '42; Life Service Band '39, '40, '41, '42.



BILLY GILL EAST, B. S. . . . . Arkadelphia

*"He's as good all-round as can be found."*

Major: Math. Minor: Biology.

S. A. S. '39, '40, '41, '42, President '42; Captain Track Team '41, Track '39, '40, '41; State 120-Yard Hurdle Champion '39, '41; 220-Yard Low Hurdle Champion '39, '40, '41; Captain Track Team '41; Basketball '40, '41; Reporter Math Honor Society '42; English Honor Society '42; Who's Who in American Colleges '42.



# SENIORS

MARY SUE ELLIFF, B. A. . . . . Ashdown

*"She seems with music to win  
And with heart to hold."*

Major: Piano. Minor: English.

Piano Class '39, '40, '41, '42; Y. W. A. Reporter '40;  
Epsilon Omega Sigma '41; Dramatic Club '41, '42.



J. D. FOSTER, B. S. . . . . Little Rock

*"Here's to the Press, the tongue of  
The country. May it never be cut out!"*

Major: Chemistry. Minor: Math.

Chemistry Club '39, '40, '41, '42; C. A. A. '41; Cam-  
era Club '41; Math Honor Society '41, '42; Ouachi-  
toman Staff '41, Editor of Ouachitonian '42.



DOROTHY ELLEN FRAZIER, B. A. . . . Russellville, Ky.

*"She has the air of a true Southern lady."*

E. E. E. '39, '40, '41, '42; Piano Club, '39, '40, '41,  
'42; President '42; Physical Education Club '41, '42;  
Y. W. A. Secretary '40; Football Queen '41; Who's  
Who in American Colleges '42.



WILLYE GANN, B. S. . . . . Mansfield

*"Always good natured and gay,  
With something friendly to say."*

Major: Home Economics. Minor: Science.

Home Economics Club '39, '40, '41, '42; Physical  
Education Club '41, '42.



# SENIORS



ELI GARY, B. S. . . . . Tyronza

*"I may be short, but so was Napoleon!"*

Major: Chemistry. Minor: Biology.

Chemistry Club '40, '41, '42; C. A. A. '41; Laboratory Assistant Biology '40; Ouachitonian Staff '41; Associate Editor of Ouachitonian '42; Signal Staff '42; Second Lieutenant R. O. T. C. '42.



SIEBERT HALEY, B. S. . . . . England

*"He lost, cupid won."*

Major: Bible. Minor: Education.

Ministerial Association '42.



EVELYN HARDEN, A. B. . . . . Helena

*"Deeds are mightier than words,  
Actions mightier than boasting."*

Major: Bible. Minor: English.

Life Service Band '39, '40, '41, '42; Y. W. A. '39, '40, '41, '42.



CARL HARRIS, B. A. . . . . Ouachita

*"Just call him 'Jive'."*

Major: Bible. Minor: History.

Ministerial Association '41, '42.

# SENIORS

SARA BETH HENDERSON, B. S. . . . . Marvell

*"Everybody likes her."*

Major: Home Economics. Minor: Science.

Home Economics Club '39, '40, '41, '42; W. C. F. '40, '41, '42.



DORIS HICKMON, B. A. . . . . Bradford

*"Sincere, earnest, and thoughtful of others."*

Major: History. Minor: English and Education

Transfer from Harding College '39; Life Service Band '39, '40, '42; International Relations Club '39, '40, '42; Christian Leaders Association '39; Pi Kappa Delta '39, '40.



WADE SCOTT HOPKINS, B. A. . . . . Marshall

*"I will leave large footprints on the paths of time."*

Major: Bible. Minor: English.

Transfer from College of Marshall; Ministerial Association '40, '41, '42.



ABNER HORNE, B. S. . . . . Camden

*"He took all courses, including campusology."*

Major: Chemistry. Minor: Mathematics.

Transfer from Connor State Agricultural College, Warner, Oklahoma; Math Honor Society '39, '40, '41, '42; Chemistry Club '39, '40, '41, '42.





# SENIORS



ROBERT DALE HUGHES, B. A. . . . . Glenwood

*"Let every man be master of his mind."*

Major: Bible. Minor: English.

Life Service Band '39, '40, '41, '42; Ministerial Association '39, '40, '41, '42.



MRS. ROBERT HUGHES, B. A. . . . . Levy

*"Cupid caught her in his snare."*

Major: Bible. Minor: English.

Life Service Band '39, '40, '41, '42; Christian Leader's Association '39; English Honor Society '41; Ouachita W. M. U. '42.



EARL HUMBLE, B. A. . . . . Dyess

*"The more you know him, the better you like him."*

Major: Bible. Minor: History.

Ministerial Association '39, '40, '41, '42, President '41; First Lieutenant R. O. T. C.



HAZEL JAMESON, B. S. . . . . Stephens

*"Cheerfulness follows wherever she goes."*

Major: Home Economics. Minor: Science.

Home Economics Club '39, '40, '41, '42, Treasurer '42; Physical Ed. Club '39, '40, '41, '42, Secretary '41; Program Chairman '42; Football Maid '41.

# SENIORS

JULIA JEAN JERNIGAN, B. S. . . . . Rector

*"Her smile is punctuated by two deep dimples."*

Major: Home Economics. Minor: Science.

Transfer from Central College '41; W. C. F. '41, '42; Home Economics Club '41, '42.



SARABEL LEECH, B. A. . . . . Benton

*"Never a harsh word does she speak,  
Always happy does she seem."*

Major: Math. Minor: History.

Life Service Band '39, '40, '41, '42; Math Honor Society '40, '41, '42.



ALBERTINE MEADOR, B. A. . . . . Texarkana

*"True hearted, wholehearted, faithful, and loyal."*

Major: Bible. Minor: English.

Life Service Band '39, '40, '41, '42; Y. W. A. '39, '40, '41, '42; Assistant to Dean '41, '42.



CHARLES A. MEEK, B. A. . . . . Memphis, Tenn.

*"There is no road to success, but through  
a strong, clear purpose."*

Major: Biology. Minor: Bible.

Ministerial Association '39, '40, '41, '42, Treasurer '41, Vice-President '42; Life Service Band '39, '40, '41, '42, Vice-President '40, President '41; Chemistry Club '41, '42; Beta Beta '42; Biology Laboratory Assistant '42.



# SENIORS



ELMER MORGAN, B. A. . . . . Arkadelphia

*"Wise, steadfast, and true to God."*

Major: Bible. Minor: English.

Ministerial Association '38, '38, '40, '41, '42, Vice-President '39, President '41.



JOHN FRANKLIN MOWREY, B. A. . . . . Fort Smith

*"A genuine love of life—A friend to all."*

Major: Mathematics. Minor: Economics.

Red Shirts '41, '42; Rifly Club '40, '41, '42; Rifle Team '40, '41, '42, Captain '42; Math Honor Society '39, '40, '41, '42, President '41, '42; Treasurer of Junior Class '41; President Senior Class '42; Track '40; Math Laboratory Assistant '41, '42; Captain R. O. T. C. '42; Student Senate '42; Who's Who in American Colleges '42; Fired in Herst Trophy Matches '42; Honor Graduate in Military '42.



KATIE JEAN MCGRAW, B. S. . . . . Star City

*"Sweet and lovable, never blue,  
To her friends she's always true."*

Major: Home Economics. Minor: Science.

W. C. F. '39, '40, '41, '42; Home Economics Club '39, '40, '41, '42, President '42; R. O. T. C. Company Sponsor '42.



JACK MCHANEY, B. A. . . . . Smackover

*"Character is the diamond that scratches  
all other stones."*

Major: Speech. Minor: English.

Football '39, '40, '41, '42, Captain '42; Basketball '40, '41; Track '40; "O" Association '39, '40, '41, '42; President '42; Red Shirts '39, '40, '41, '42, Vice-President '41, '42; Alpha Psi Omega '41, '42; President of Sophomore Class '40; Cadet Major of R. O. T. C. '42; English Honor Society '40, '41, '42; Rifle Club '39, '40, '41, '42; President '41; Captain Rifle Team '39, '40, '41, '42; Ouachita Players '39, '40, '41, '42; C. A. A. '41; Who's Who in American Colleges '42; Campus Who's Who '40, '41, '42; Voice Club.



# SENIORS

MARJORIE McMAHEN, B. S. . . . . *Magnolia*

*"The purest treasure mortal time affords  
Is a spotless reputation."*

Major: Home Economics. Minor: Science.

Transfer from Magnolia A. & M. '41; Life Service Band '41, '42; Home Economics Club '41, '42; President '42.



MRS. ORVILLE ODOM, B. A. . . . . *Arkadelphia*

*"A fair exterior is an excellent recommendation."*

Piano Class '37, '38, '39; Girl's Glee Club '39.



EARL OLMSTEAD, B. A. . . . . *Heber Springs*

*"He was the grand-daddy of college jive."*

Major: Speech. Minor: English.

Band '39, '40, '41, '42, President '40; Popular Orchestra '39; Ripples '41; Campus Who's Who '41, '42; Symphonic Orchestra '40, '41, '42; Ouachita Players '40, '41, '42; Alpha Psi Omega '41, '42.



PRINTIS PARK, A. B. . . . . *Corning*

*"The guy who plays through life but makes  
his goals anyway."*

Major: Chemistry. Minor: Biology.

Red Shirts '41, '42; Sergeant-at-Arms '42; Rifle Club '39, '40, '41, '42, Vice-President '42; Rifle Team '39, '40, '41, '42; Cadet Captain R. O. T. C. '42.



# SENIORS



RUSSELL PATE, B. A. . . . . Russellville

*"Liked by all that knew him."*

Major: English. Minor: Education.



WALTER RAMSEY, B. S. . . . . Detontl

*"When love and duty clash, let duty to to smash."*

Major: Chemistry. Minor: Biology.

Co-Captain in Football '41; C. A. A. '40; Chemistry Club '39, '40, '41, '42; "O" Association '40, '41, 42.

*RZ*



JESSE S. REED, B. A. . . . . Dumas

*"I had rather be right than President."*

Major: Bible. Minor: English.

Life Service Band '39, '40, '41, '42, President '39; Ministerial Association '39, '40, '41, '42; President '40.



JANICE ROGERS, B. S. . . . . Pine Bluff

*"Everybody likes her,  
And she is worthy their liking."*

Major: Home Economics. Minor: Science.

Home Economics Club '39, '40, '41, '42; Vice-President Sophomore Class '40; Vice-President Senior Class '42; Who's Who in American Colleges '42.

# SENIORS

LAVERNE RUCKER, B. S. . . . Grand Saline, Texas

*"Has a good word and a pleasant smile  
for everyone."*

Major: Home Economics. Minor: Science and  
Education.

Home Economics Club '39, '40, '41, '42; Library  
Staff '41; Home Economics Laboratory Assistant '42.



C. D. SALLEE, JR., B. A. . . . Pine Bluff

*"I live as greatly as I can, to be, no matter  
when, a man."*

Major: Bible. Minor: English.

Ministerial Association '39, '40, '41, '42.



LEON SHADDOX, B. A. . . . Harrison

*"First element to success is determination  
to succeed."*

Major: Biology. Minor: Education.

Choir '40, '41, '42; Male Quartet '41; Camera Club  
'41; Transfer from University of Arkansas.



FLOY GRACE TAYLOR, B. S. . . . Malvern

*"She has enough brains for the whole class."*

Major: Home Economics. Minor: Science.

Transfer from Central Baptist College; Vice-Presi-  
dent of Y. W. A. '41; Home Economics Club '41, '42.





# SENIORS

OLENE TAYLOR, B. A. . . . . Newport

*"The wise and active conquer difficulties."*

Major: History. Minor: Education.

Transfer from Arkansas State, Jonesboro; International Relations Club '42; Life Service Band '42.

HARVEY THOMAS, B. A. . . . . Curtis

*"All things come to those who wait  
Therefore, why should I hurry?"*

Major: Social Science. Minor: Education.

Red Shirts '39, '40, '41, '42, President '41; International Relations Club '39, '40, '41, '42; Choir '38.

LURLINE TURBEVILLE, B. A. . . . . Strong

*"True hearted, whole hearted, faithful and true."*

Major: History. Minor: English.

Transfer from College of the Ozarks; President of Girls' Student Government '42; International Relations Club '41, '42; Y. W. A. '41, '42.

BILLY VESTAL, B. S. . . . . Arkadelphia

*"Whatsoever his hand findeth to do,  
He doth with all his might."*

Major: Mathematics. Minor: Chemistry.

Captain R. O. T. C. '42; President Student Association '42; Sigma Alpha Sigma '39, '40, '41, '42, Vice-President '42; Chemistry Club '39, '40, '41, '42; Vice-President '41; Yell Leader '41, '42; Who's Who in American Colleges '42; Campus Who's Who '41, '42. American Colleges '42; Campus Who's Who '41, '42; Math Honor Society '39, '40, '41, '42; Vice-President '42.



# SENIORS

ERMON WEBB, B. A. . . . . Lawson

*"Success is sure to be,  
For one as loyal as he."*

Major: Bible. Minor: Speech.

Ministerial Association '39, '40, '41, '42; Vice-President '40, President '41; Life Service Band Vice-President '39, President '40, '41, '42; Beta Beta President '42.



PAULINE WEBB, B. A. . . . . Stamps

*"Her quiet humor makes her a friend to all."*

Major: English. Minor: Home Economics.

Librarian '41, '42; Girl's Student Council '42.



LEON WHEELER, B. S. . . . . Long Beach, Calif.

*"He doesn't talk much but neither did Lincoln."*

Major: Biology. Minor: Chemistry.

Transfer from San Diego State. Chemistry Club '41.



C. S. WHITE, B. A. . . . . Little Rock

*"One boy in a thousand with a thousand  
and one aims."*

Major: Social Science. Minor: English

President Freshman Class '39; President Ouachita College Symphonic Choir '38, '39; Tenor Soloist for Choir '39, '40, '41, Director '42; International Relations Club '41, '42; Sigma Alpha Sigma '41; First Lieutenant R. O. T. C. '42.

EDGAR STANLEY WILLIAMSON, B. A. . . . Little Rock

*"An equal mixture of good humor and good sense."*

Major: Bible. Minor: History.

Band '39, '40, '41, '42; B. S. U. Council '40, '41, '42; Vice-President of Religious Leaders Association '39; Business Manager of Ripples '41, '42; R. O. T. C. Second Lieutenant '42.



# CLASS OFFICERS

1  
9  
4  
3



DAVID MOORE  
*President*  
(First Semester)



PAT MOSELEY  
*President*  
(Second Semester)



LAWSON JACKS  
*Vice-President*  
(First Semester)



THOMAS KEYS  
*Vice-President*  
(Second Semester)



ELIZABETH GALLOWAY  
*Secretary*



HERBERT PHILLIPS  
*Treasurer*

They have profited by the past experiences of their elders in preparing for the expenses needed to entertain the "Most Dignified Seniors" by setting a precedent in giving a very successful Junior play, entitled "Black Wings." They leave this parting word to the Sophomores, "Keep on your toes, little brothers and sisters. Your time is coming. Take heed." To the Junior Class, we say, "Until next year . . ."



# JUNIORS

BILL ABERNATHY . . . . . *Fordyce*  
 GERALDINE ADKINS . . . . . *Bradley*  
 SUE FURROW ADKINS . . . . . *Fort Smith*



EVELYN ALLEN . . . . . *Arkadelphia*  
 WADE ARMSTRONG . . . . . *Hartford*  
 JOHNNIE ASHCRAFT . . . . . *Detonti*



JOHN BARROW . . . . . *Ozan*  
 JIMMIE BEALS . . . . . *Little Rock*  
 KARL BIRDSONG . . . . . *Shiloh*



MRS. PAUL BOWLIN . . . . . *Arkadelphia*  
 RAY BRANSCUM . . . . . *Arkadelphia*  
 ARVIS BROOKS . . . . . *Hot Springs*



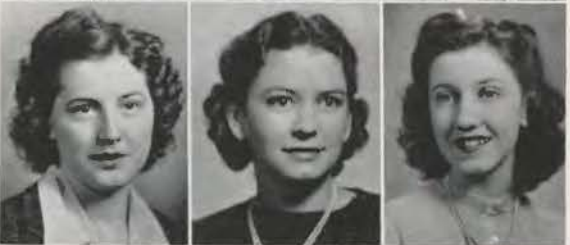
WANDA BROWN . . . . . *England*  
 VIRGINIA CANNON . . . . . *Arkadelphia*  
 HELEN CARBRAY . . . . . *Branch*



FRANK M. COCHRAN . . . . . *Bradley*  
 BERTA SUE COPELAND . . . . . *Nashville*  
 MARY HELEN COSSEY . . . . . *Searcy*



LAVERNE DAVIS . . . . . *Heber Springs*  
 MRS. WILSON DEESE . . . . . *Lonoke*  
 EVELYN DELOACH . . . . . *Heber Springs*



# JUNIORS



ESTHER DIXON . . . . . Bentonville  
 BEATRICE DULANEY . . . Roswell, N. M.  
 FLORENCE DUNLOP . . . . . Amity



B. F. FREASIER . . . . . Little Rock  
 ELIZABETH GALLOWAY . . . Stamps  
 JEANNETTE GARDINER . . . Arkadelphia



ALICE GARDNER . . . . . Little Rock  
 HARRIET GRANT . . . . . Arkadelphia  
 GLADYS GRAY . . . . . Pine Bluff



MARTHA HAIRSTON . . . . . Warren  
 ANDREW HALL . . . . . Little Rock  
 JOHN MILTON HALL . . . Arkadelphia



TOMMY HALSELL . . . . . Little Rock  
 JERAL HAMPTON . . . . . Booneville  
 BILLY HARGIS . . . . . Warren



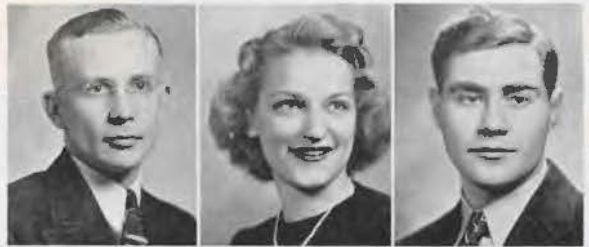
ROSCOE HARKEY . . . . . Little Rock  
 ED HARNESS . . . . . Arkadelphia  
 ALBERT RAY HARRIS . . . North Little Rock



LAWSON HATFIELD . . . . . Little Rock  
 MARGARET HAYNES . . . . . Pocahontas  
 MARY ANN HEATH . . . . . Little Rock

# JUNIORS

DON HOOK . . . . . Amity  
 JUDY HOUSEHOLDER . . . North Little Rock  
 ULYSSES HOWARD . . . . . Magnolia



HORACE HUBBARD . . . . . Bearden  
 LAWSON JACKS . . . . . Brinkley  
 CLARIS JOHNSON . . . . . Arkadelphia



ELLEN JOHNSON . . . . . Pine Bluff  
 CATHERINE JORDAN . . . . Hot Springs  
 JUANITA JORDAN . . . . . Batesville



STANLEY JORDAN . . . . . Lockesburg  
 L. U. C. KAUFMAN . . . . . Arkadelphia  
 WALTER KENNICUTT . . . . Arkadelphia



THOMAS KEYS . . . . . Gurdon  
 SAMUEL KING . . . . . Arkadelphia  
 ELOISE LANDERS . . . . . North Little Rock



LONNIE LASATER . . . . . Arkadelphia  
 EVA GREEN LAWRENCE . . . . Oden  
 WESLEY LINDSEY . . . . . Arkadelphia



MRS. WESLEY LINDSEY . . . Arkadelphia  
 FOSTER LOTT . . . . . Marshall, Tex.  
 WINIFRED MATTOX . . . . . Shawnee, Okla.





# JUNIORS



MRS. WINFRED MATTOX, *Shawnee, Okla.*  
 LENOX MEDFORD . . . . . *Mena*  
 MRS. LENOX MEDFORD . . . . . *Mena*



JAMES MEDLEY . . . . . *Arkadelphia*  
 PRENTISS MIXON . . . . . *Jacksonville*  
 THELMA JEAN MIZELL . . . *Little Rock*



WALTER MIZELL . . . . . *Corning*  
 NELL MONDY . . . . . *Pocahontas*  
 DAVID MOORE . . . . . *Texarkana*



SARA CAROLYN MOORE . . . *Brookland*  
 PAT MOSELEY . . . . . *Osceola*  
 EVELYN MYERS . . . . . *Bonne Terre, Mo.*



DELBERT McATEE . . . . . *Paraloma*  
 T. D. McCULLOCH . . . . . *North Little Rock*  
 ERWIN L. McDONALD . . . *Arkadelphia*



CHARLES NASH . . . . . *Strong*  
 CARL NEWLAND . . . . . *Lawrenceville, Ill.*  
 NENO NOWLIN . . . . . *Arkadelphia*



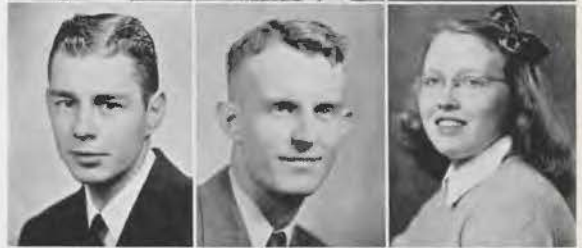
BILLY NUTT . . . . . *Bearden*  
 DONALD ORR . . . . . *Hot Springs*  
 HERMAN ORR . . . . . *Arkadelphia*

# JUNIORS

CARL OVERTON . . . . Arkadelphia  
 PAULA PARK . . . . . Corning  
 INA GRACE PARTAIN . . . Booneville



HERBERT PHILLIPS . . . . . Gould  
 CURTIS PURYEAR . . . . Springdale  
 VIRGINIA QUEEN . . . . Hot Springs



KATHRYN RAGLIN . . . . Little Rock  
 PAUL REA . . . . . North Little Rock  
 BILL RICHARDSON . . . . Little Rock



O. C. ROBINSON . . . . . Benton  
 PAULINE SANDERS . . Memphis, Tenn.  
 GERTIE FAE SHELTON . . Arkadelphia



MILDRED SHIPP . . . . . Formosa  
 MILDRED SKINNER . . . Lockesburg  
 FRED SMITH . . . . . Helena



STANLEY STANFORD . . Arkadelphia  
 PHOEBIA JEAN STARK . . Heber Springs  
 JIMMIE LEE STEWART . . Arkadelphia



CHARLES STOUT . . . . . Mulberry  
 MARGARET STUART . . . Little Rock  
 MILDRED STRICKLAND . . Hampton



# JUNIORS



LILLIAN SWAIM . . . . . England

CHARLES TAYLOR . . . . . Newport

FLOY GRACE TAYLOR . . . . . Malvern



DOROTHY THOMPSON . . . Arkadelphia

MARY ELIZABETH TOLSON . . . . . Rison

ADOLPHUS TURMAN . . . . . Hot Springs



EDMOND WALKER . . . . . Viola

WAYNE WARD . . . . . Piggott

EMILY WATSON . . . . . Arkadelphia



VIRGINIA WEBSTER . . . . . Little Rock

MARILYN WESTBROOK . . . . . Beebe

JESSIE MAE WHITMORE . . . DeQueen



FERN WINFORD . . . Coffeyville, Kan.

NOLAN WRIGHT . . . . . Little Rock

MARJORIE YOUNG . . . . . Texarkana





1. Morrison in the tailback position. 2. Fantasy. 3. Mariestes makes them all. 4. Camera-shy Wilson. 5. Capt. Maurer must have told that joke! 6. Right shoulder arms! 7. The E's at ease. 8. The boys must have been campused. 9. N. and H. "grub" for W. C. F. 10. Sharpshooter's shindig. 11. Dinner at the Stork Club. 12. Crumbs at the master's table. 13. That joke in number 5 must have been plenty funny. 14. Without the spike. 15. Two heads are better than one. 16. Must have been wide open. 17. Wake those two up. 18. Field rations. 19. Two yards gained through the middle. 20. Kemp! Gimme dat food! 21. State B. S. U. banquet.

# CLASS OFFICERS

1  
9  
4  
4



FRANK THOMPSON  
*President*

MARTHA CORN  
*Vice-President*

HELEN BICKERS  
*Secretary*

RALDON WIIES  
*Treasurer*

It is with remembered sympathy that we salute you, "Second Year Freshmen," and give you this admonition, "Great oaks from little acorns grow!" Just think! Last year, a Freshman! Next year, a Junior! And, then, a Senior! Didn't the time pass fast? Well, anyway, where there's life there's hope!



# SOPHOMORES

GARLAND ALLEN . . . . . Tuckerman  
 MORRIS ASHCRAFT . . . . . Malvern  
 J. C. BARBER . . . . . Cord  
 ROSAMOND BENTON . . . . . Fordyce

HELEN BICKERS . . . . . Batesville  
 SARA BIGGS . . . . . North Little Rock  
 CHESLEY BILLINGS . . . . . Clarksdale  
 ANN BLACKBURN . . . . . Bluffton

R. L. BLACKWELL . . . . . Ward  
 EVELYN BONHAM . . . . . Little Rock  
 MADIE BOYD . . . . . Beebe  
 SUSAN BOW . . . . . Siloam Springs

MARY ALICE BURNS . . . . . Hartford  
 PATSY CALDWELL . . . . . Ashdown  
 BILL CARROLL . . . . . Little Rock  
 MILLARD ROSS CHERRY . . . . . Franklin, Ky.

LEONARD CLEMENTS . . . . . New Edinburg  
 JACQUELINE CLICK . . . . . El Dorado  
 MARTHA CORN . . . . . Little Rock  
 HELEN CRAWFORD . . . . . Arkadelphia

H. W. CROMER . . . . . Pine Bluff  
 GLEN CROTTS . . . . . Arkadelphia  
 OPAL CRUTCHFIELD . . . . . Waldron  
 PHYLLIS DAILY . . . . . Arkadelphia

WALLACE DAUGHTRY . . . . . England  
 R. A. DAVENPORT . . . . . Bauxite  
 LOREN DAVIS . . . . . Ozark  
 VERGIL DeFREECE . . . . . Arkadelphia

IRIS DOUGLAS . . . . . Gravette  
 MRS. RAYMOND EARLY . . . . . E. St. Louis, Mo.  
 JOHN EDRINGTON . . . . . Pocahontas  
 W. B. ESSMAN . . . . . Arkadelphia





# SOPHOMORES



GEORGE S. FOX . . . . Arkadelphia  
 MARY KATHERYN FOX . . . . DeWitt  
 MARY SUE FRANKS . . . . West Helena  
 ROMA FREEMAN . . . . Fort Smith



JOHN FURQUERSON . . . . El Dorado  
 DORIS GARRISON . . . . Dermott  
 JUANITA GILL . . . . North Little Rock  
 CHARLES GLADDEN . . . . Caddo Gap



JESSIE GLADDEN . . . . Caddo Gap  
 H. B. GOLDSBY . . . . England  
 JOHN DAVID GRACE . . . . Danville  
 ELMER GRIEVER . . . . Harrison



JIMMY GRIFFITH . . . . El Dorado  
 DELL HAMES . . . . Paris  
 CHARLES HAMPTON . . . . Manticello  
 WILSON HANSARD . . . . Manning



NETABEL HARDY . . . . Magnolia  
 HINSLEY HARP . . . . Booneville  
 BUDDY HARRIS . . . . Beardan  
 EDGAR HARVEY . . . . Arkadelphia



THOMAS HEDGECOCK . . . Friendship  
 GEORGE HENDRICKS . . . Arkadelphia  
 LUCRETIA HENRY . . . . Rector  
 GWENDOLYN HERNDON . . Hot Springs



JOHN J. HICKERSON . . . . Batesville  
 DOROTHY JEAN HODGES . . Fordyce  
 J. M. HOLDER . . . . Pine Bluff  
 JIMMIE HOLLAND . . . . Benton



EMMA JEAN HOLLON . . . Arkadelphia  
 ANNA FAYE HUGHES . . . Glenwood  
 EDWARD HUNNICUTT . . . Danville  
 JOE HUNTER . . . . Doloré

# FRESHMEN

VERA INCE . . . . . Helena  
 GENE JACKSON . . . . . Columbia, S. C.  
 HENRY D. JONES . . . . . Georgetown, La.  
 CECIL KEMP . . . . . Warren

I. M. KIBBE . . . . . Arkadelphia  
 BYRON KING . . . . . Batesville  
 DORIS KING . . . . . Pangburn  
 JOYCE LESLIE . . . . . DeWitt

HOWARD LINTON . . . . . Siloam Springs  
 MELDON LLOYD . . . . . Paragould  
 WILLARD LLOYD . . . . . Arkadelphia  
 CHARLES LUCK . . . . . Arkadelphia

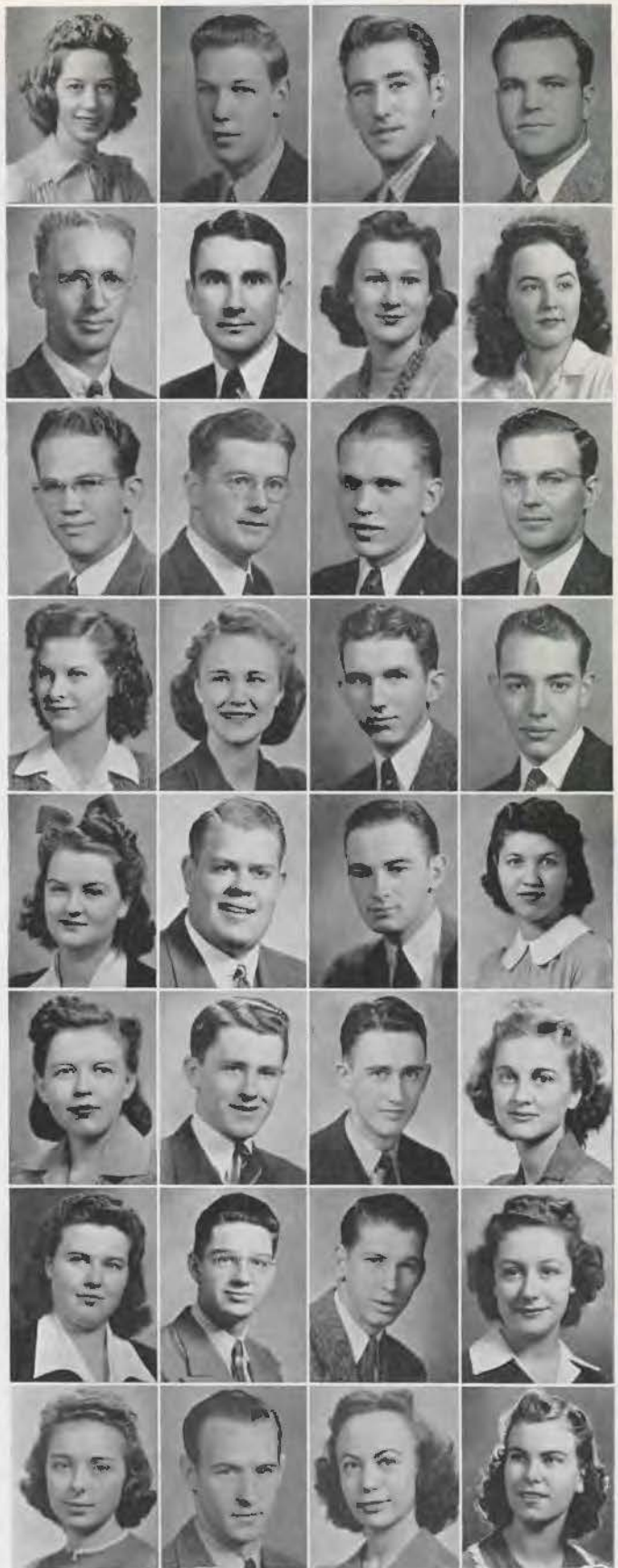
ELIZABETH MADDOX . . . . . Harrisburg  
 ELLEN MALLORY . . . . . Keo  
 CRAWFORD MARBURY . . . . . Arkadelphia  
 BILLY MARTIN . . . . . Searcy

MERLE MATLOCK . . . . . Arkadelphia  
 DONALD MEADOR . . . . . Arkadelphia  
 BILL MEYER . . . . . Little Rock  
 DOROTHY GENE MILLSAPPS N. Little Rock

DORIS MINTON . . . . . Gurdon  
 BILL MONTGOMERY . . . . . Donaldson  
 IRWIN MOSHIER . . . . . Booneville  
 MRS. IRWIN MOSHIER . . . . . Booneville

MILDRED MUNDAY . . . . . El Dorado  
 JUDDY McANINCH . . . . . Little Rock  
 JERRY McFARLAND . . . . . Banks  
 NAOMI McKEE . . . . . Homer, La.

KATHRYN NELSON . . . . . El Dorado  
 LOUIS GENE NICHOLS . . . . . Warren  
 SUE O'NEAL . . . . . Benton  
 FRANCES OVERTON . . . . . Arkadelphia





# SOPHOMORES



AUBREY PARK . . . . . Corning  
 REDGER PARKER . . . . . Russellville  
 JOHN PARROTT . . . . . Tuckerman  
 WAYNE PATTERSON . . . . . Paris



GEORGE PEEPLES . . . . . Arkadelphia  
 TED PHELPS . . . . . El Dorado  
 WYATT PINKSTON . . . . . Crossell  
 JOE PIPKIN . . . . . Athens, Tenn



RUTH POTEET . . . . . Fordyce  
 LOUIS POWER . . . . . Nashville  
 GEORGE PRIDDY . . . . . Dumona  
 BETSY PURIFOY . . . . . Camden



CHARLENE QUICK . . . . . Little Rock  
 BETTY RAMAY . . . . . Ozark  
 MRS. JESSE REED . . . . . Dumona  
 MADELYN RICE . . . . . Arkadelphia



CAROLYN RICHARDSON . . . Little Rock  
 MACK SALE . . . . . Augusta  
 JANE MARIE SCARLETT . . . Pine Bluff  
 NETTIE KATE SEALY . . . . Friendship



C. H. SEATON . . . . . Little Rock  
 T. N. SHADDOX . . . . . Harrison  
 MARVIN SLOAN, JR. . . . . Harrison  
 WALTER SMART . . . . . Camden



DOROTHY BELLE SMITH . . . Hot Springs  
 OSCAR SMITH . . . . . El Dorado  
 ROBERT A. SMITH . . . . . Helena  
 JOHN ED STEELEY . . . . . Calico Rock



MERLE STINSON . . . . . Little Rock  
 CORTESE STOCKTON . . . . . Prescott  
 NEVILLE SWAIM . . . . . Helena  
 MRS. CHARLES TAYLOR . . . DeQueen



# SOPHOMORES

AUTRY THOMAS . . . Hartford

MARILYN THOMAS . . . Curtis

FRANK THOMPSON . . . Strong



C. W. TOW . . . Rogers

FRANCES TULL . . . Little Rock

LOLEEN TURNER . . Arkadelphia



EVELYN TURNER . Arkadelphia

RUSSELL WADE . . . Keo

BILL WALLACE . . Arkadelphia



LEHMAN WEBB . . . Tuckerman

EMMA LOU WEEKS . . Gravelle

MILDRED WESTBROOK . . Benton



RALDON WILES . . Arkadelphia

STERLING WILLIAMS . . . North Little Rock

JACK WILSON . . . Danville

EMMA CATHERINE WOOD . . Arkadelphia



# CLASS OFFICERS

1  
9  
4  
5



RANDOLPH KEITH  
*President*

DOROTHY JEAN GUY  
*Vice-President*

DOROTHY RAINWATER  
*Secretary*

DANIEL GRANT  
*Treasurer*

You may think this year was tough on you, my Freshmen friends, but you were in the spotlight . . . and who doesn't like to hog the show? Next year, you will become the forgotten Sophomores. It is just a stage you must go through to reach the desired goal of the distinguished Seniors, and, success is for the ones who are determined to reach the peak . . . four years in Ouachita.

# FRESHMEN

CARL ALLEN . . . . . Haskell, Okla.  
 VERGIL AMASON . . . . . El Dorado  
 JOHN ANDERSON . . . . . Arkadelphia  
 GENEVA ARMSTRONG . . . . . Hartford



HELEN ASHLEY . . . . . Mountain Pine  
 BETTYE BAKER . . . . . Hermitage  
 MARTHA JEAN BAKER . . . . . Fort Smith  
 MERCEDES BALL . . . . . Bauxite



AUDRY BALLARD . . . . . Arkadelphia  
 RUBY MAE BECKMAN . . . . . Osceola  
 JOHN BELEW . . . . . Corning  
 EDWARD BERRY . . . . . Brazil, S. A.



VERNELLE BISHOP . . . . . Alexander  
 BETTY LOU BIVENS . . . . . Camden  
 OLIVE BLACKWOOD . . . . . Rector  
 BILLIE BLAYLOCK . . . . . Little Rock



WINBURN BLEDSOE . . . . . Arkadelphia  
 DOYLE BONDS . . . . . Fountain Hill  
 HORACE BOYD . . . . . Arkadelphia  
 JOE BRADLEY . . . . . Russellville



PAULINE BROWN . . . . . Buckville  
 ANNABELLE BURNETT . . . . . Heber Springs  
 WILLIAM BURNETT . . . . . Heber Springs  
 DONALD BURTON . . . . . Cleburne, Tex.



WILEY CALDWELL . . . . . Arkadelphia  
 EDITH CHAPMAN . . . . . Earle  
 REBECCA COCKRUM . . . . . Little Rock  
 RUTH CONAWAY . . . . . Hartford



THOMPSON COPELAND . . . . . McGehee  
 CHARLES CORNELL . . . . . Little Rock  
 DALE COWLING . . . . . Mineral Springs  
 FRED A COX . . . . . Forrest City





# FRESHMEN



BILL CRAVER . . . . . Siloam Springs  
 BETTY R. CRAWFORD . . . . . Arkadelphia  
 RALPH CROSWELL . . . . . Crossett  
 BETH CRUTCHFIELD . . . . . Sheridan



THELMA CRUTCHFIELD . . . . . Waldron  
 CLAUDE DAVIS . . . . . Hot Springs  
 DOROTHA DAVIS . . . . . Rogers  
 FLOYD DAVIS . . . . . Little Rock



EMORY DEESE . . . . . Beebe  
 BOB DuBOISE . . . . . Clarksdale, Miss.  
 JIMMIE LEE DuLANEY . . . . . Roswell, N. M.  
 BILL ERWIN . . . . . Grady



GLEN FAIR . . . . . Joyce City  
 RONALD FERGUSON . . . . . Fort Smith  
 BILL FLEMING . . . . . North Little Rock  
 WILLIAM FLYNT . . . . . Beebe



ROBERTA FOWLER . . . . . Friendship  
 MRS. GEORGE FOX . . . . . Arkadelphia  
 HERCHEL FREEMYER . . . . . Friendship  
 CHRISTINE GARRETT . . . . . Prescott



ROBERT GARRETT . . . . . Hampton  
 L. F. GARRISON . . . . . Helena  
 MERLE GOODWIN . . . . . Salem  
 WELDON GRAFTON . . . . . Booneville



DANIEL GRANT . . . . . Arkadelphia  
 DOROTHY LEE GREGG . . . . . Nettleton  
 EDGAR GRIFFIN . . . . . Arkadelphia  
 DOROTHY JEAN GUY . . . . . Pine Bluff



LELAND HALL . . . . . Little Rock  
 MARIESTES HANSON . . . . . Colton Plant  
 HELEN HARDEN . . . . . Helena  
 AUBREY HARDIN . . . . . Camden

# FRESHMEN

JAMES HARGIS . . . . . *Warren*  
 EDWARD HARRIS . . . . . *Crossett*  
 ANNA LOUISE HARRISON . *Monroe, Okla.*  
 ELLEN HARVILL . . . . . *Humphrey*

JAMES HAWLEY . . . . . *El Dorado*  
 LOIS HAYES . . . . . *Parks*  
 MARILYN HENNING . . . . . *Des Arc*  
 RUTH HENNING . . . . . *Des Arc*

ANDREW HESKETT . . . . . *Helena*  
 CECIL HOBSON . . . . . *Arkadelphia*  
 PAUL HOGUE . . . . . *Paron*  
 BELLE HOLT . . . . . *Nashville*

JAMES HOWLETT . . . . . *Texarkana*  
 MARGARET HUGHES . . . *West Helena*  
 MRS. EARL HUMBLE . . . . . *Dyess*  
 BILLY MOORE HURST . . . *Lewisville*

HELEN HUTCHINSON . . . *Memphis, Tenn.*  
 DELMAR JACKSON . . . . . *Hot Springs*  
 JEANNE JOHNS . . . . . *Cedarville*  
 RUTH JOHNSON . . . . . *Glendale, Ariz.*

THOMAS R. JOHNSON . . . *Texarkana, Tex.*  
 JOHN W. JOHNSTON . . . . *Fort Smith*  
 DONALD JONES . . . . . *Fort Smith*  
 I. W. JONES . . . . . *Cleburne, Tex.*

OSBORNE JUSTICE . . . . . *Cabot*  
 HENRY KEAHEY . . . . . *Fort Smith*  
 RANDOLPH KEITH . . . . . *Hot Springs*  
 LOIS KOCH . . . . . *Evansville, Ind.*

STEWART LANDES . . . . . *Lewisville*  
 LOUISE LAYTON . . . . . *Grannis*  
 IRENE LESTER . . . . . *Lewisville*  
 LEO LEWIS . . . . . *Lewisville*





# FRESHMEN



LIVINGSTON LINCOLN . . . . . Pocahontas  
 BERNARD LINDMAN . . . . . Little Rock  
 GLORIA LITTLE . . . . . Emmett  
 MERTIE MARIE LLOYD . . . . . Arkadelphia  
 BILLY MANN . . . . . Ripley, Tenn.



GENE MARTIN . . . . . Hayti, Mo.  
 CHERRY MATHEWS . . . . . Little Rock  
 THOMAS MEADOR . . . . . Arkadelphia  
 CHESTER MILAM . . . . . Little Rock  
 NEIL MODERT . . . . . Mt. Vernon, Ill.



ANNIE K. MOORE . . . . . Lake Providence, La.  
 FRANCES MOSLEY . . . . . Little Rock  
 JACK MOWREY . . . . . Arkadelphia  
 CLYDE McCALMAN . . . . . Bradley  
 CLARA McCASKILL . . . . . Arkadelphia



ELLEN McKEE . . . . . Homer, La.  
 LEWIS McMAHON . . . . . Arkadelphia  
 NINA LOU OWENS . . . . . Vilonia  
 PATRICIA PAYNTER . . . . . Little Rock  
 WILMA HELEN PHILLIPS . . . . . Gould



C. R. PIERCE, JR. . . . . Forrest City  
 STANFORD PIERCE . . . . . Wilnot  
 JOYCE PONDER . . . . . Little Rock  
 GUS POOLE . . . . . Arkadelphia  
 JERRY POOLE . . . . . Cape Girardeau, Mo.



TOM POOLE . . . . . Springfield, Mo.  
 CHARLES PRICE . . . . . El Dorado  
 VERA RAINES . . . . . Rosboro  
 DOROTHY RAINWATER . . . . . Crossett



BOB RANDALL . . . . . Arkadelphia  
 HELEN REAVES . . . . . Paragould  
 ORVILLE H. ROBERTS . . . . . North Little Rock  
 ORVILLE ROBERTS . . . . . Harrison



# FRESHMEN

WALLACE ROBINSON . . . . . *England*  
 NAOMI ROPER . . . . . *Little Rock*  
 OLEN ROTH . . . . . *Judsonia*  
 BARBARA RUDOLPH . . . . . *Arkadelphia*  
 HARRIET RUDOLPH . . . . . *Arkadelphia*

KATHERINE SEXTON . . . . . *England*  
 GERALDINE SHAW . . . . . *Arkadelphia*  
 CLAUDE SHESHANE . . . . . *Arkadelphia*  
 OLIVE RUTH SHIELDS . . . . . *Portsmouth, O.*  
 LINDALL SIGSBY . . . . . *Rector*

CAROLYN SIMMONS . *New Albany, Miss.*  
 DELBERT SMITH . . . . . *Mena*  
 ROBERT M. SMITH . . . . . *McGehee*  
 HERBERT SPARLAR . . . . . *Pine Bluff*  
 BETTY LOU STANFILL . *North Little Rock*

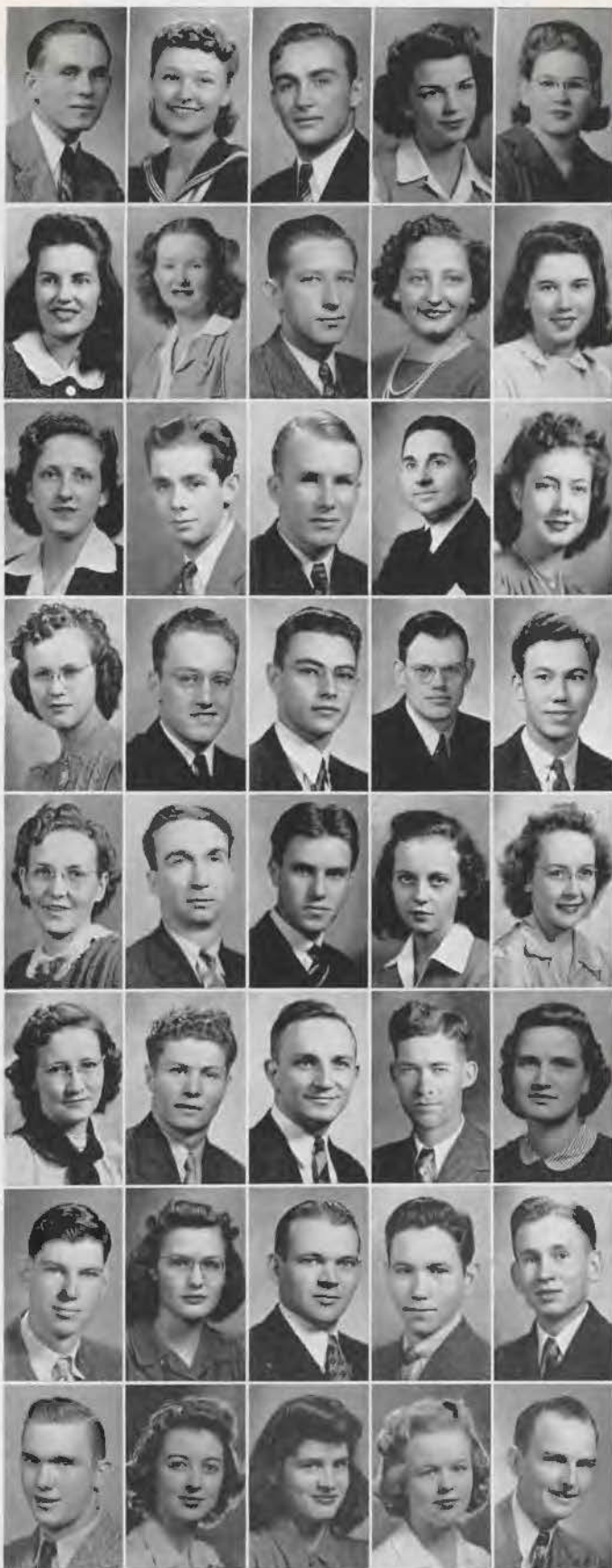
MRS. INEZ STAFFORD . . . *Arkadelphia*  
 LYNN STOUT . . . . . *Mulberry*  
 CLAUDE STRIPLING . . . . . *Little Rock*  
 G. W. SWAFFORD . . . . . *Hope*  
 J. D. TANKERSLEY . . . . . *Mulberry*

MRS. DALE TAYLOR . . . . . *Arkadelphia*  
 EVERETT TAYLOR . . . . . *Jesseville*  
 JAMES TAYLOR . . . . . *Corning*  
 DOROTHY THOMAS . . . . . *Curtis*  
 VIRGINIA THOMPSON . . . . . *Little Rock*

MRS. ADOLPHUS TURMAN . *Hot Springs*  
 WARREN UNDERWOOD . . . *Nashville*  
 ALFRED VANSANT . . . . . *Jacksonville*  
 A. W. WAGNON . . . . . *Fouke*  
 LUCY WALKER . . . . . *Helena*

ROBERT WALKER . . . . . *Arkadelphia*  
 ROSALEA WEBSTER . . . . . *Little Rock*  
 ROBERT WELLS . . . . . *Branch*  
 ELLIS WEST . . . . . *Holly Springs*  
 BILL WHARTON . . . . . *Green Forest*

ALVIN WILLIAMS . . . . . *Little Rock*  
 VIDA FAYE WILLIAMS . . . . *Little Rock*  
 JUANITA WILSON . . . . . *McCrary*  
 LYNETTE WILSON . . . . . *Danville*  
 GLEN WOMACK . . . . . *Almond*





DINING HALL—FINE ARTS BUILDING



LITTLE THEATRE



ORGANIZATIONS



*Auditorium*





# Sigma Alpha Sigma

## Members

BILL ABBOTT  
 JOHN BARROW  
 KARL BIRDSONG  
 PAUL BOWLIN  
 DONALD BURTON  
 BILL CARROLL  
 JOHNNY HALL

LAWSON JACKS  
 STEWART LANDES  
 JERRY MCFARLAND  
 BILLY MARTIN  
 DENO NICHOLS  
 JACK WILSON

*Honorary Member*  
 CLARENCE ADDIS  
*Mascot*  
 STAFFORD HERBERT  
*Pledges*  
 CRAWFORD MARBURY  
 BOB GARRETT

## Officers

BILLY GILL EAST	.....	President
BILLY VESTAL	.....	Vice-President
BILL RICHARDSON	.....	Secretary and Reporter
HERBERT PHILLIPS	.....	Treasurer
JERAL HAMPTON	.....	Sergeant-At-Arms





## Beta Beta

### Members

DALE COWLING  
 WILLIAM FLYNT  
 CHARLES GLADDEN  
 DANIEL GRANT

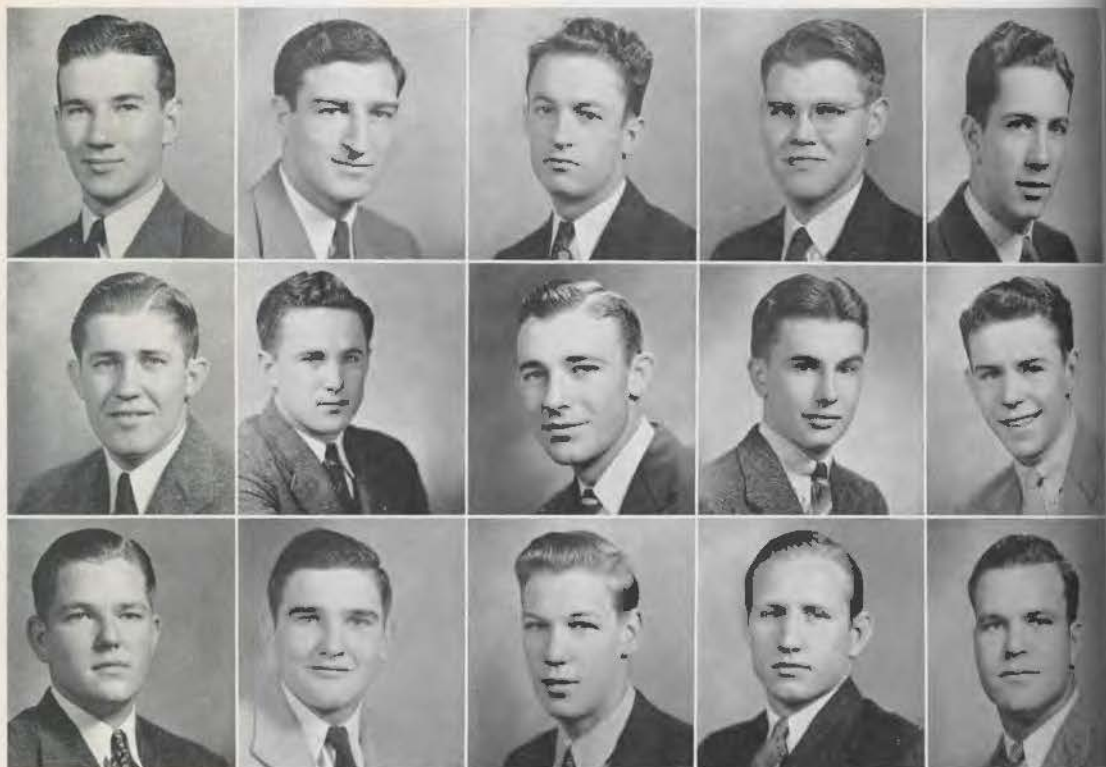
LAWSON HATFIELD  
 PAUL HOGUE  
 RANDOLPH KEITH

CLYDE MCCALMAN  
 CHARLIE MEEK  
 WALTER MIZELL  
 DONALD ORR

### Officers

D. WADE ARMSTRONG	. Pres. First Sem.; Correspondence Sec'y, Second Sem.
DAVID MOORE	. . . . . Vice-President, First Semester
ANDREW HALL	. Secretary, First Semester; Social Chairman, Second Sem.
EDMOND WALKER	. Treasurer, First Sem.; Sergeant-At-Arms, Second Sem.
DELBERT McATEE	. . . . . Correspondence Secretary, First Semester
BILL MONTGOMERY	. Sergeant-At-Arms, First Sem.; Phys. Ed. Dir., Second Sem.
ERMON WEBB	. . Phys. Ed. Director, First Sem.; President, Second Sem.
PAT MOSELEY	. . . . . Vice-President, Second Semester
WAYNE WARD	. . . . . Social Chairman, First Semester
JOHN PARROTT	. . . . . Secretary, Second Semester
LEHMAN WEBB	. . . . . Treasurer, Second Semester





## Red Shirts

### Members

BILL ABERNATHY  
 CARL ALLEN  
 HAROLD BALDWIN  
 JIMMIE BEALS  
 EDWARD BERRY

HOLLAND BROWN  
 R. A. DAVENPORT  
 EMORY DEESE  
 BILL ERWIN  
 RONALD FERGUSON

AUBREY HARDEN  
 BUDDY HARRIS  
 GENE JACKSON  
 J. W. JONES  
 CECIL KEMP



### Officers

HARVEY THOMAS	President
JACK MCHANEY	Vice-President
BILLY HARGIS	Secretary
FRANK THOMPSON	Treasurer





## Red Shirts

### *Members*

BILLY MANN

JOHNNY MOWREY

BILLY NUTT

HERMAN ORR

AUBREY PARK

PRINTES PARK

JOE PIPKIN

LOUIS POWER

CHARLES PRICE

MACK SALE

ROBERT F. SMITH

OSCAR SMITH

NOLAN WRIGHT

*Honorary Member*

NEWELL BLAKELY



## W. C. F.

### *Officers*

KATIE JEAN MCGRAW	. . . . .	<i>High Flyer</i>
NAOMI MCKEE	. . . . .	<i>Inter-Club Representative</i>
BETTY FRAME DAVIDSON	. . . . .	<i>Reporter</i>
JULIA JEAN JERNIGAN	. . . . .	<i>Treasurer</i>

### *Members*

SARA BETH HENDERSON  
 THELMA BLEIDT BANKS  
 KITTY MOORE  
 ELLEN MCKEE

DOROTHY LEE GREGG  
 DOROTHY RAINWATER  
 BETTY LOU STANFILL  
 RUTH HENNING



## Hi Hats

### *Officers*

JIMMIE LEE STEWART	. . . . .	<i>President</i>
MILDRED SKINNER	. . . . .	<i>Vice-President</i>
VIRGINIA CANNON	. . . . .	<i>Secretary and Treasurer</i>
ELIZABETH GALLOWAY	. . . . .	<i>Reporter</i>
DOROTHY BELLE SMITH	. . . . .	<i>Scrapbook Chairman</i>

### *Members*

JOYCE LESLIE	WILMA HELEN PHILLIPS	LYNNETTE WILSON
SARAH MOORE		NANCY WINBURN





# E. E. E.

## *Members*

MARJORIE ALLEN

DOROTHY ELLEN FRAZIER

ELLEN JOHNSON

HELEN BICKERS

SUE FURROW ADKINS

FRANCES TULL

BILLIE BLAYLOCK

BARBARA RUDOLPH

JANICE ROGERS

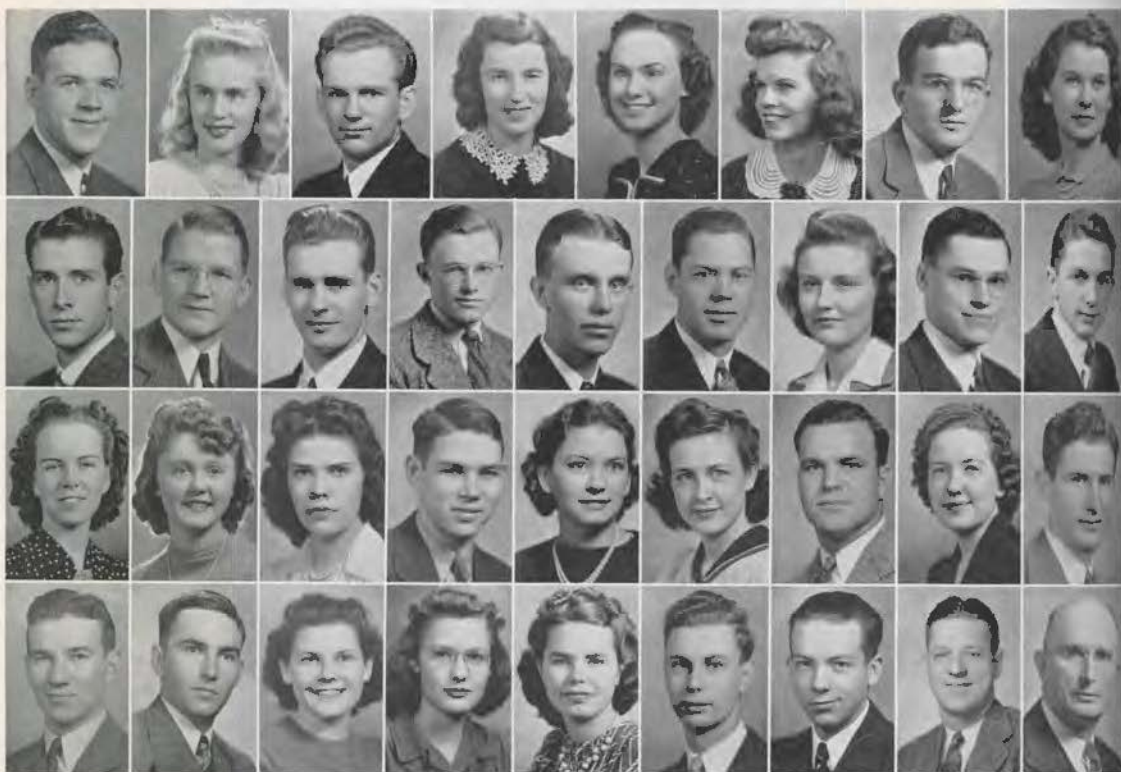
MARILYN WESTBROOK

JUANITA JORDAN



## Kewpie Klub

CAROLYN JANE CARPENTER . . . . .	<i>Chief</i>
ROSAMOND BENTON . . . . .	<i>Baby</i>
CAROLYN RICHARDSON . . . . .	<i>Flyer</i>
CHARLENE QUICK . . . . .	<i>Joy</i>
PATRICIA PAYNTER . . . . .	<i>Soldier</i>
MARIESTES HANSON . . . . .	<i>Sailor</i>
NENO NOWLIN . . . . .	<i>Painter</i>
DOROTHY THOMAS . . . . .	<i>Fireman</i>
VIDA FAYE WILLIAMS . . . . .	<i>Secret</i>



## B. S. U. Council

TOMMY HALSELL . . . . . *President*  
 HELEN BICKERS . . . . . *First Vice-President*  
 PAT MOSELEY . . . . . *First Vice-President*  
 HARRIET GRANT . . . . . *Second Vice-President*  
 MARY ELIZABETH TOLSON . . . . . *Third Vice-President*  
 CATHERINE JORDAN . . . . . *Secretary*  
 FRANK COCHRAN . . . . . *Treasurer*  
 MARGARET HAYNES . . . . . *Reporter*  
 WAYNE WARD . . . . . *Musical Director*

MARTIN BURNS . . . . . *Ridgecrest Chairman*  
 T. D. McCULLOCH . . . . . *Publicity Chairman*  
 STANLEY WILLIAMSON . . . . . *Continuation Com. Chairman*  
 EDMOND WALKER . . . . . *Life Service Band Representative*  
 EARL HUMBLE . . . . . *Ministerial Association Representative*  
 MARJORIE ALLEN . . . . . *Y. W. A. Representative*  
 MILLARD ROSS CHERRY . . . . . *House Arrangement Chairman*  
 JOE PIPKIN . . . . . *Photographer*

### TRAINING UNION REPRESENTATIVES

Sara Biggs      Phyllis Daily      Margaret Deese      Cecil Kemp      Donald Orr  
 Patsy Caldwell      Loren Davis      Roma Freeman      Nell Mondy

### SUNDAY SCHOOL REPRESENTATIVES

Bill Abernathy      Dale Cowling      Katie Jean McGraw      Rosalea Webster

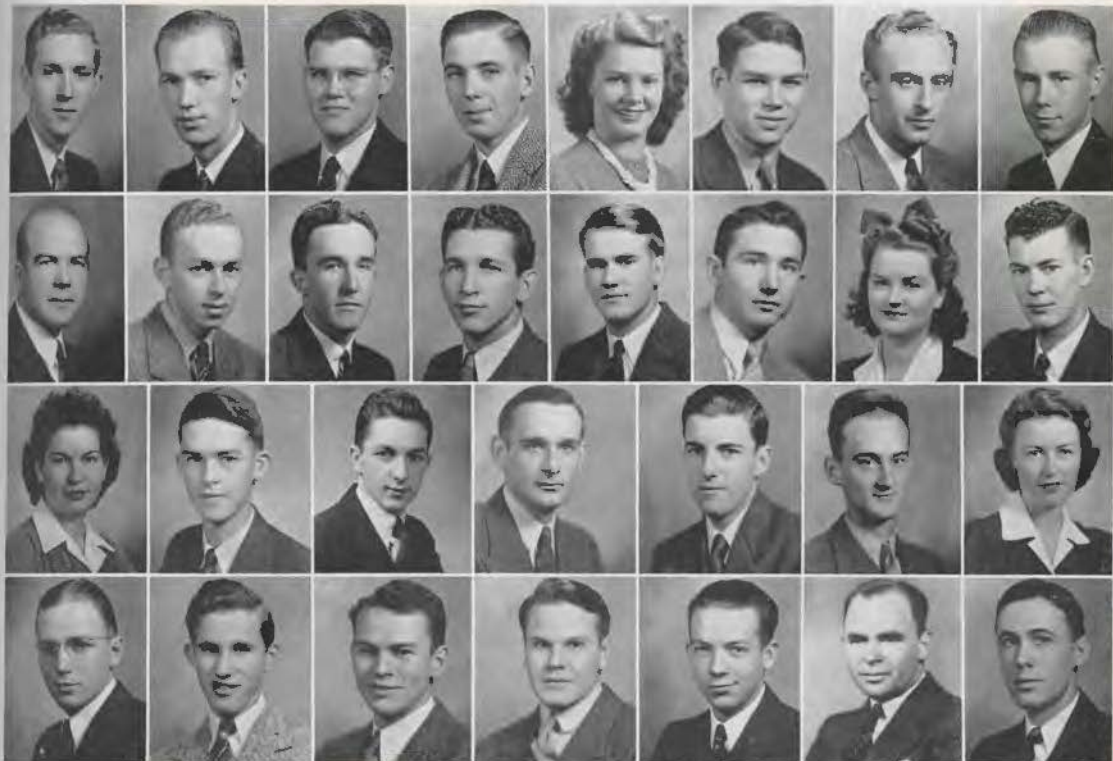
### SECOND BAPTIST CHURCH REPRESENTATIVES

EMMA JEAN HOLLON . . . . . *Sunday School Representative*  
 CARL OVERTON . . . . . *B. T. U. Representative*  
 RALDON WILES . . . . . *General Representative*

STUDENT SECRETARY  
 MR. HOWARD HALSELL

FACULTY ADVISOR  
 DR. O. W. YATES





# Chemistry Club

## Members

CLARENCE ADDIS  
 TRACY BARRETT  
 JIMMIE BEALS  
 KARL BIRDSONG  
 HELEN CRAWFORD  
 LOREN DAVIS  
 ROYCE DORRIS  
 J. D. FOSTER

ELI GARY  
 CHARLES GLADDEN  
 PAUL HOGUE  
 ABNER HORNE  
 BILL HURST  
 BILLY MANN  
 MERLE MATLOCK  
 CHARLIE MEEK

PAULA PARK  
 GEORGE PEEPLES  
 JOE PIPKIN  
 WALTER RAMSEY  
 MACK SALE  
 CHARLES STOUT  
 DOROTHY THOMPSON  
 FRANK THOMPSON

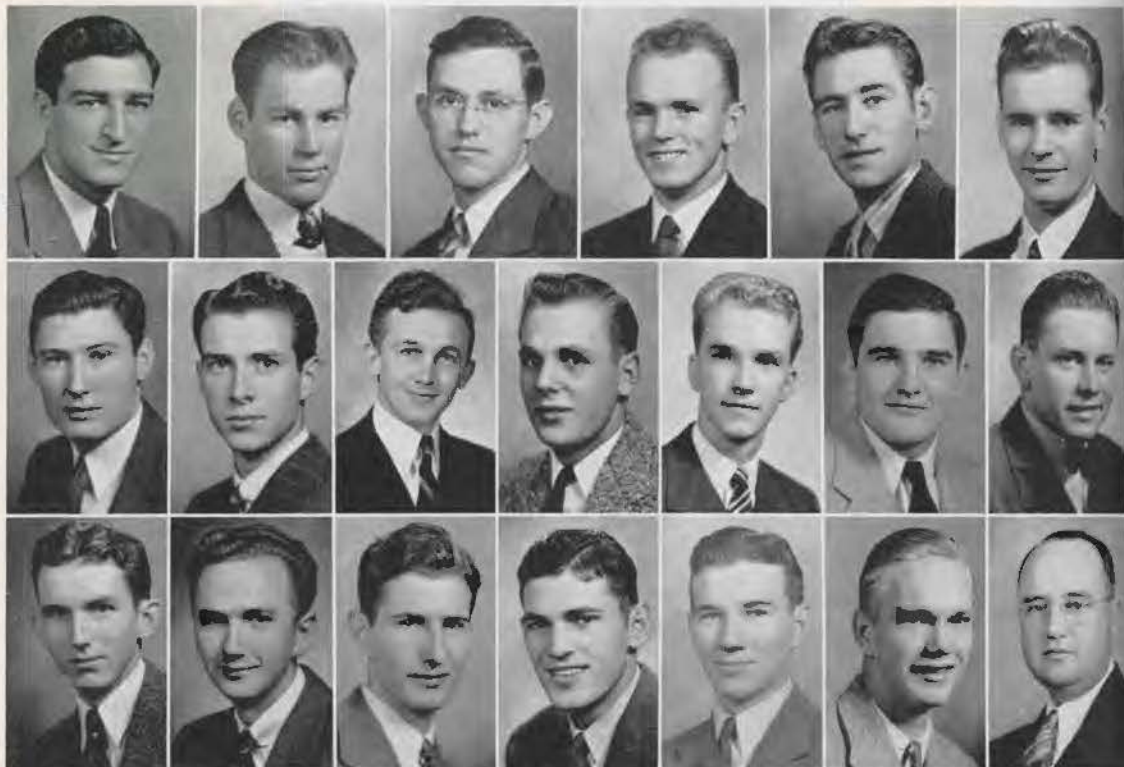
C. W. TOW  
 BILLY VESTAL  
 LEON WHEELER  
 RALDON WILES

*Sponsors*  
 DR. E. A. PROVINE  
 PROF. PAUL GODFREY

## Officers

NOLAN WRIGHT . . . . . *President*  
 BILL ABERNATHY . . . . . *Vice-President*  
 NELL MONDY . . . . . *Secretary*  
 WANDA BROWN . *Corresponding Secretary*  
 PAT MOSELEY . . . . . *Reporter*  
 WALTER MIZELL . . . *Program Chairman*





## C. P. T. Students

### FALL SESSION

CARL ALLEN  
 LEONARD CLEMENTS  
 GLENN CROTTS (Advanced)  
 LAWSON JACKS  
 HENRY D. JONES  
 T. D. McCULLOCH (Advanced)  
 OSCAR SMITH  
 WAYNE WARD  
*Students Not Pictured*  
 MORRIS MOORE (Advanced)  
 RAYMOND OWENS

### SPRING SESSION

WALLACE DAUGHTRY  
 JOHNNY FURQUERON  
 WILSON HANSARD  
 BUDDY HARRIS  
 EDWARD HUNNICUT  
 CRAWFORD MARBURY  
 WYATT PINKSTON  
 DONALD ORR  
*STERLING WILLIAMS*  
*Students Not Pictured*  
 TOM WOOD

*Advanced Students*—Bill Abernathy, J. C. Barber.

Mr. Leonard Price—Ground Instructor, Coordinator for Ouachita, and State Director for National Coordinator's Organizations.

Those taking flying in the 1941 Summer Session were J. C. Barber (Advanced), Robert Cunningham, Thomas Perry Griffin, Thomas Hedgecock, Wiley Ernest Holland, Harry Lyle Huggs, Gene Jackson, Richard Blair Rudolph, Earl Bunch Whiteley, and John Yancey.

Flight Instructors—Horace Fausett (Summer), Howard O. Barker (First Sem.), R. H. Daniel (Second Sem.), and Wendell W. Watkins (Secondary).



## Girl's Physical Education Club

### Members

THELMA BLEIDT BANKS

JIMMIE LEE STEWART

ESTHER DIXON

NEVILLE SWAIM

ELIZABETH GALLOWAY

MARILYN WESTBROOK

HAZEL JAMESON

FERN WINFORD

DORIS KING

MAJORIE YOUNG

DOROTHY BELLE SMITH

### Sponsor

MISS ELIZABETH HITE GREEN



### Officers

DOROTHY ELLEN FRAZIER . . . . . President

BETTY FRAME DAVIDSON . . . . . Vice-President

MARTHA CORN . . . . . Secretary and Treasurer



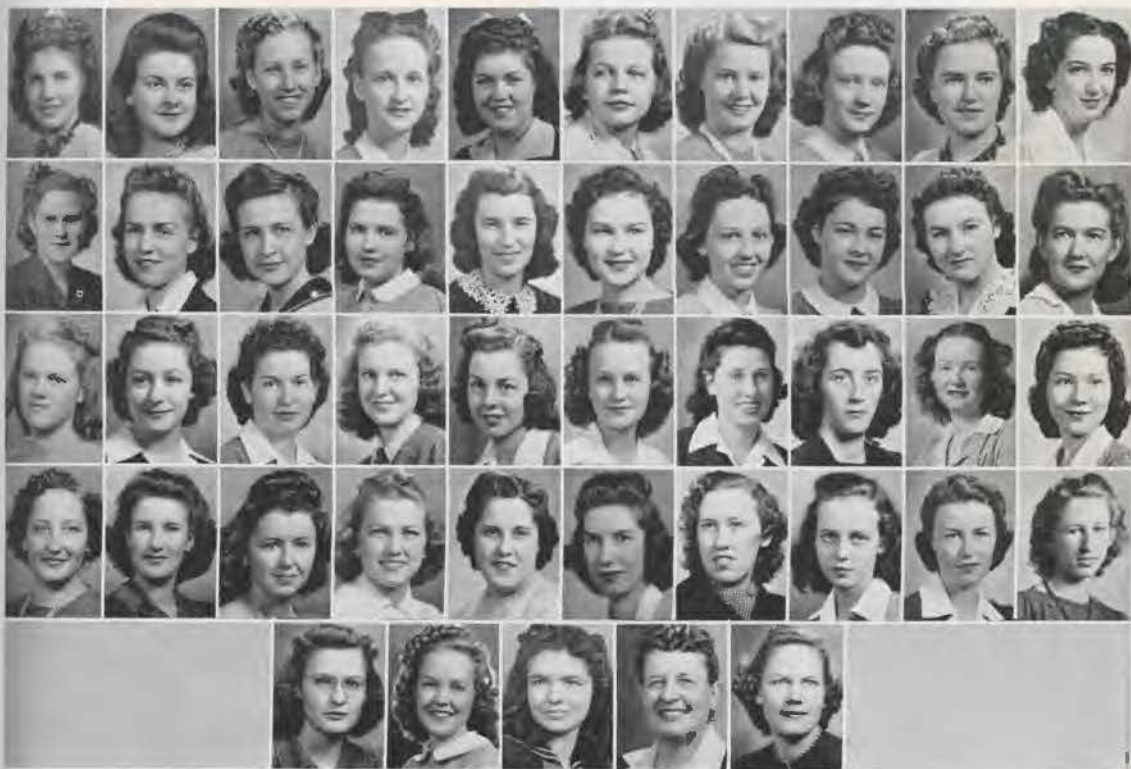


## Girls' Student Government

LURLINE TURBEVILLE	<i>President</i>
RUTH POTEET	<i>Vice-President</i>
ROSAMOND BENTON	<i>Secretary</i>
HELEN BICKERS	<i>Treasurer</i>
DOROTHY JEAN GUY	<i>Freshman Representative</i>
MARTHA CORN	<i>Sophomore Representative</i>
MARTHA HAIRSTON	<i>Junior Representative</i>
PAULINE WEBB	<i>Senior Representative</i>
LAVERNE DAVIS	<i>West Hall Representative</i>
PAULA PARK	<i>Home Economics Representative</i>

### SPONSORS

MRS. H. L. WINBURN  
 MISS JEWEL DIXON  
 MISS THELMA BATSON



# Home Economics Club

## Members

Geneva Armstrong  
 Bettye Baker  
 Olive Blackwood  
 Susan Bow  
 Ruth Conaway  
 Martha Corn  
 Helen Crawford  
 Beth Crutchfield  
 Opal Crutchfield  
 Iris Douglas  
 Beatrice DuLaney

Mary Kathryn Fox  
 Roma Freeman  
 Willye Gann  
 Harriet Grant  
 Dorothy Lee Gregg  
 Sarah Beth Henderson  
 Belle Holt  
 Anna Faye Hughes  
 Julia Jean Jernigan  
 Mertie Marie Lloyd  
 Naomi McKee

Paula Park  
 Patricia Paynter  
 Wilma Helen Phillips  
 Janice Rogers  
 LaVerne Rucker  
 Nettie Kate Sealy  
 Geraldine Shaw  
 Gertie Faye Shelton  
 Mildred Shipp  
 Phoebe Jean Stark  
 Jimmie Lee Stewart

Margaret Stuart  
 Lillian Swaim  
 Floy Grace Taylor  
 Dorothy Thomas  
 Dorothy Thompson  
 Rosalea Webster  
 Jessie Mae Whitmore  
 Emma Catherine Wood  
*Sponsors*  
 Mrs. J. V. Gunn  
 Miss Lucille Silliman

### Officers First Semester

KATIE JEAN MCGRAW . . . . . *President*  
 JUDY HOUSEHOLDER . . . . . *Vice-President*  
 GWENDOLYN HERNDON . . . . . *Secretary*  
 HAZEL JAMESON . . . . . *Treasurer*

### Officers Second Semester

MARGERY McMAHEN . . . . . *President*  
 GERALDINE ADKINS . . . . . *Vice-President*  
 MARTHA JEAN BAKER . . . . . *Secretary*  
 DORIS KING . . . . . *Treasurer*





# International Relations Club

## Members

Florence Baker	John Edrington	Herbert Phillips	Evelyn Turner
Harold Baldwin	Evelyn DeLoach	Madelyn Rice	C. S. White
Helen Bickers	Bill Hargis	Pauline Sanders	
Paul Bowlin	Joyce Leslie	Mildred Strickland	
Holland Brown	Mrs. Lennox Medford	Harvey Thomas	Sponsors
Helen Carbray	Thelma Mizell	Marilyn Thomas	Dr. R. C. Daily
Jacqueline Click	David Moore	Frances Tull	Prof. Tom Jones
Frank M. Cochran	Mildred Munday	Lurline Turbeville	



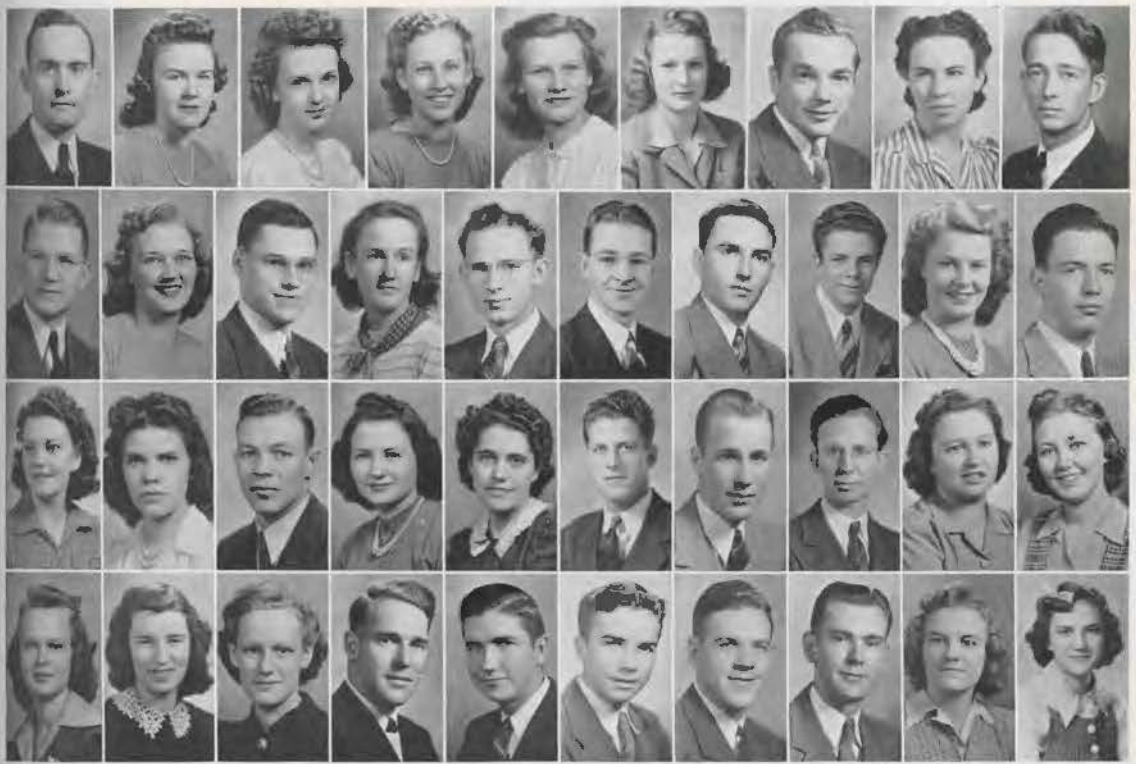
## Officers—First Semester

THOMAS KEYS	President
<i>(Both Semesters)</i>	
BETTY CURTIS	Vice-President
ESTHER DIXON	Secretary
JERAL HAMPTON	Treasurer

## Officers—Second Semester

DORIS HICKMON	Vice-President
OLENE TAYLOR	Secretary
HURLEY CARTER	Treasurer





# Life Service Band

## Members

Johnnie Ashcraft  
 Martha Jean Baker  
 Ruby Beckham  
 Olive Blackwood  
 Evelyn Bonham  
 Madie Boyd  
 Arvis Brooks  
 Pauline Brown  
 Bill Burnett  
 Martin Burns

Helen Carbray  
 Millard Ross Cherry  
 Rebecca Cockrum  
 Tommy Copeland  
 Charles Cornell  
 Dale Cowling  
 Bill Craver  
 Helen Crawford  
 H. W. Cromer  
 Thelma Crutchfield

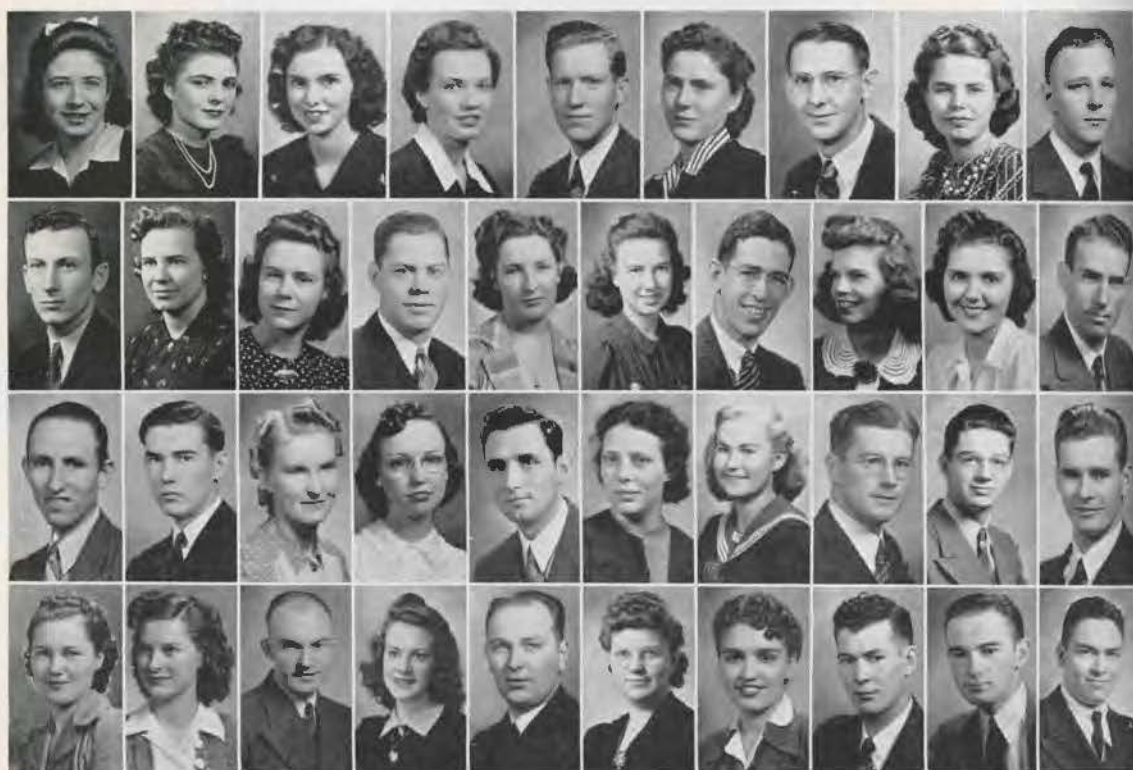
Phyllis Daily  
 Wilson Deese  
 Esther Dixon  
 Florence Dunlop  
 Raymond Early  
 Bill Flynt  
 B. R. Freasier  
 Dorris Garrison  
 Gladys Gray  
 Juanita Gill

Harriet Grant  
 Martha Hairston  
 Seibert Haley  
 Andrew Hall  
 Leland Hall  
 Tommy Halsell  
 Charles Hampton  
 Evelyn Harden  
 Helen Harden

## Officers—First Semester

EDMOND WALKER . . . . . *President*  
 NETABEL HARDY . . . . . *First Vice-President*  
 MRS. IRWIN MOSHIER . . . . . *Second Vice-Pres.*  
 GARLAND ALLEN . . . . . *Third Vice-President*  
 MRS. RAYMOND EARLY . . . . . *Secretary*  
 JOHN PARROTT . . . . . *Treasurer*  
 LAWSON HATFIELD . . . . . *Chorister*  
 VIRGINIA BRYANT . . . . . *Pianist*  
 MILDRED STRICKLAND . . . . . *Reporter*





## Life Service Band

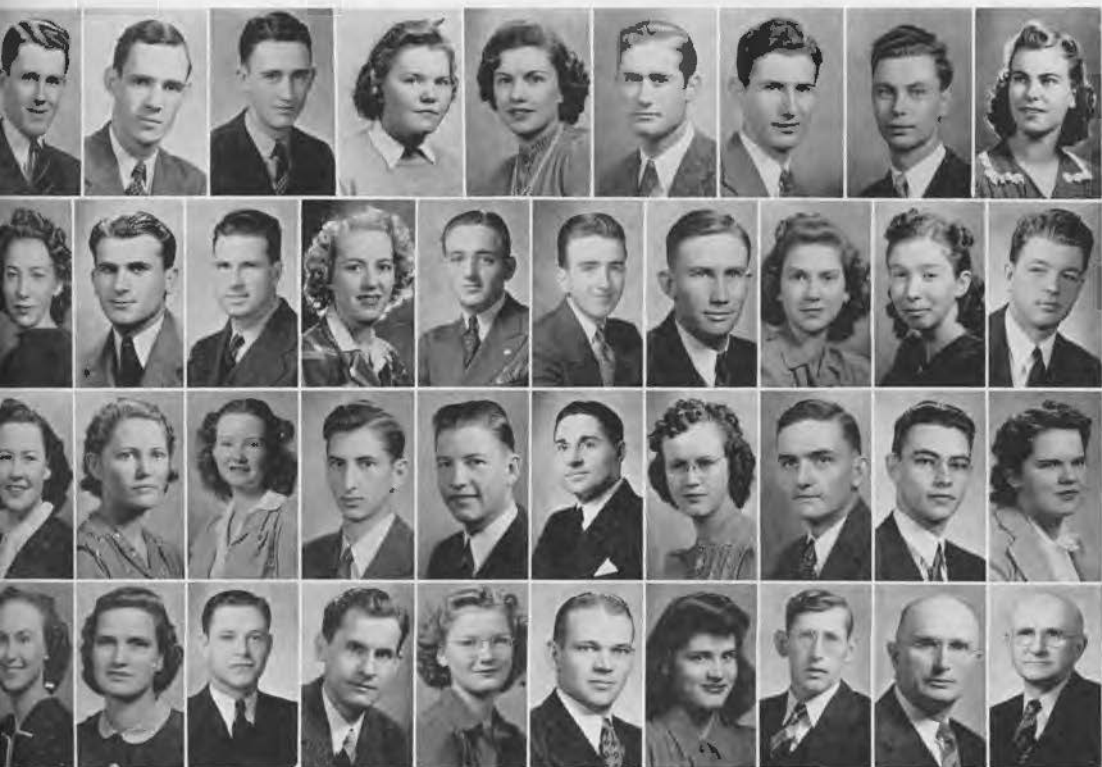
### Members

Anna Louise Harrison	Mrs. Robert Hughes	Thomas Keys	Elizabeth Maddox
Ellen Harvell	Margaret Hughes	Louis Layton	E. O. Martindale
Mary Ann Heath	Earl Humble	Sarabel Leech	Cherry Matthews
Marilyn Henning	Mrs. Earl Humble	Wesley Lindsey	Winford Mattox
Andrew Heskitt	Helen Hutchinson	Mrs. Wesley Lindsey	Albertine Meador
Doris Hickmon	John Johnston	Gloria Little	Mrs. Lenox Medford
J. N. Holder	Catherine Jordan	Meldon Lloyd	Charlie Meek
Emma Jean Hollon	Juanita Jordan	Juddy McAninch	Bill Meyer
James Howlett	Stanley Jordan	T. D. McCulloch	E. M. Modert
Robert Hughes	Osborne Justice	Marjorie McMahan	

### Officers Second Semester

D. WADE ARMSTRONG	President
DELBERT McATEE	First Vice-President
ANN BLACKBURN	Second Vice-President
H. B. GOLDSBY	Third Vice-President
FREDA COX	Secretary
MORRIS ASHCRAFT	Treasurer
RANDOLPH KEITH	Chorister
BOB RANDALL	Pianist
LA VERNE DAVIS	Reporter





## Life Service Band

### *Members*

Bill Montgomery  
 David Moore  
 Irwin Moshier  
 Frances Mosley  
 Evelyn Myers  
 Charles Nash  
 Donald Orr  
 Carl Overton  
 Frances Overton  
 Ina Grace Partain  
 C. R. Pierce  
 Stanford Pierce  
 Joyce Ponder  
 Jerry Poole

Tom Poole  
 George Priddy  
 Kathryn Raglin  
 Vera Raines  
 Paul Rea  
 Pauline Sanders  
 Jane Scarlett  
 Geraldine Shaw  
 Fred Smith  
 Robert Smith  
 Herbert Sparler  
 Mrs. Inez Stafford  
 John Ed Steeley  
 Claude Stripling

Olene Taylor  
 Mary Elizabeth Tolson  
 Lucy Walker  
 Ermon Webb  
 Lehman Webb  
 Virginia Webster  
 Bob Wells  
 Juanita Wilson  
 Henry Wright

### *Sponsors*

Dr. O. W. Yates  
 Dr. L. T. Wallace





## Laboratory Assistants

### BIOLOGY

Clarence Addis  
Karl Birdsong  
Wanda Brown  
Leland Hall  
Charles Meek  
George Peeples

### CHEMISTRY

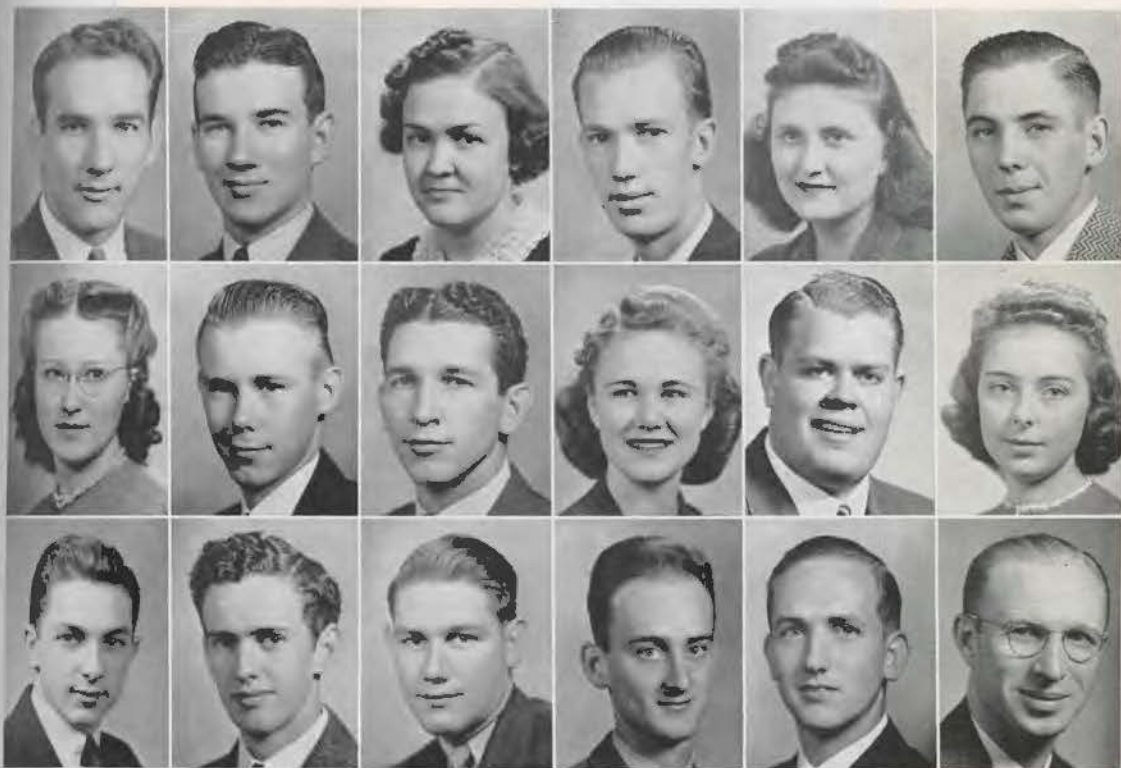
Bill Abernathy  
Billy Hurst  
Nell Mondy  
Joe Pipkin  
C. W. Tow

### PHYSICS

Johnny Mowrey  
Nolan Wright

### HOME ECONOMICS

LaVerne Rucker  
Dorothy Thompson



# Math Honor Society

## Members

Bernard Anderson  
 Bill Abernathy  
 Florene Baker  
 Tracy Barrett  
 Rosamond Benton

Karl Birdsong  
 Betty Curtis  
 J. D. Foster  
 Abner Horne  
 Ellen Mallory

Donald Meador  
 Kathryn Nelson  
 Joe Pipkin  
 Walter Smart  
 Stanley Stanford

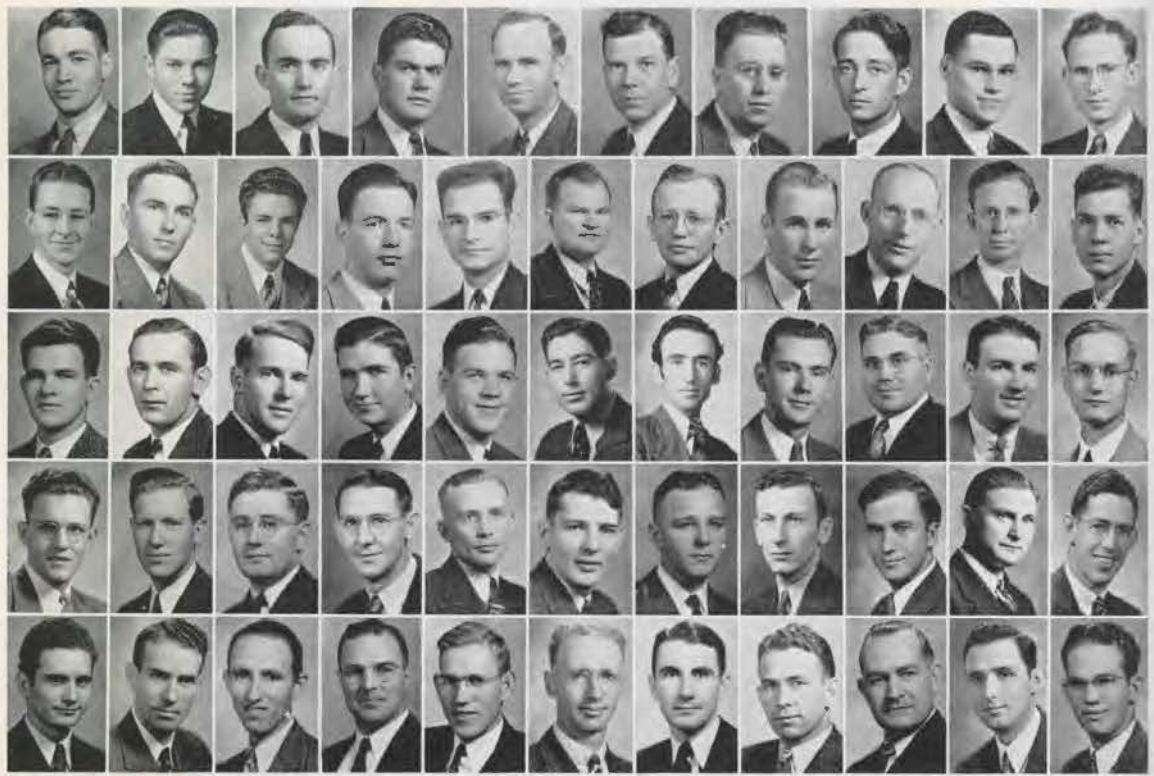
Charles Stout  
 Nolan Wright

Sponsor  
 Dr. J. L. Dorroh

## Officers

JOHNNY MOWREY . . . . . *President*  
 WINFRED MATTOX . . . *First Vice-President*  
 PAT MOSELEY . . . *Second Vice-President*  
 BILLY VESTAL . . . . *Third Vice-President*  
 SARABEL LEECH . . . *Secretary-Treasurer*  
 BILLY GILL EAST . . . . . *Reporter*





# Ministerial Association

## Members

Garland Allen  
 D. Wade Armstrong  
 Johnnie Ashcraft  
 Morris Ashcraft  
 John Basinger  
 Horace Boyd  
 Ray Branscum  
 William Burnett  
 Millard Ross Cherry  
 Thompson Copeland  
 Charles Cornell  
 Dale Cowling  
 Bill Craver

H. W. Cromer  
 D. W. Deere  
 Virgil DeFreece  
 W. B. Essman  
 William Flynt  
 George Fox  
 B. R. Freazier  
 H. B. Goldsby  
 Weldon Grafton  
 Edgar Griffin  
 Seibert Haley  
 Andrew Hall  
 Tommy Halsell

Dell Hames  
 Brent Hamlin  
 Charles Hampton  
 Ed Harness  
 Carl Harris  
 Edwin Harris  
 Lawson Hatfield  
 Andrew Heskett  
 J. J. Hickerson  
 J. M. Holder  
 Don Hook  
 Wade Scott Hopkins  
 James Howlett

Robert Hughes  
 Joe Hunter  
 Claris Johnson  
 John W. Johnston  
 Donald Jones  
 Stanley Jordan  
 Osborne Justice  
 L. U. C. Kaufman  
 Walter Kennicutt  
 I. M. Kibbe  
 Byron King  
 Lonnie Lasater  
 Wesley Lindsey  
 Howard Linton

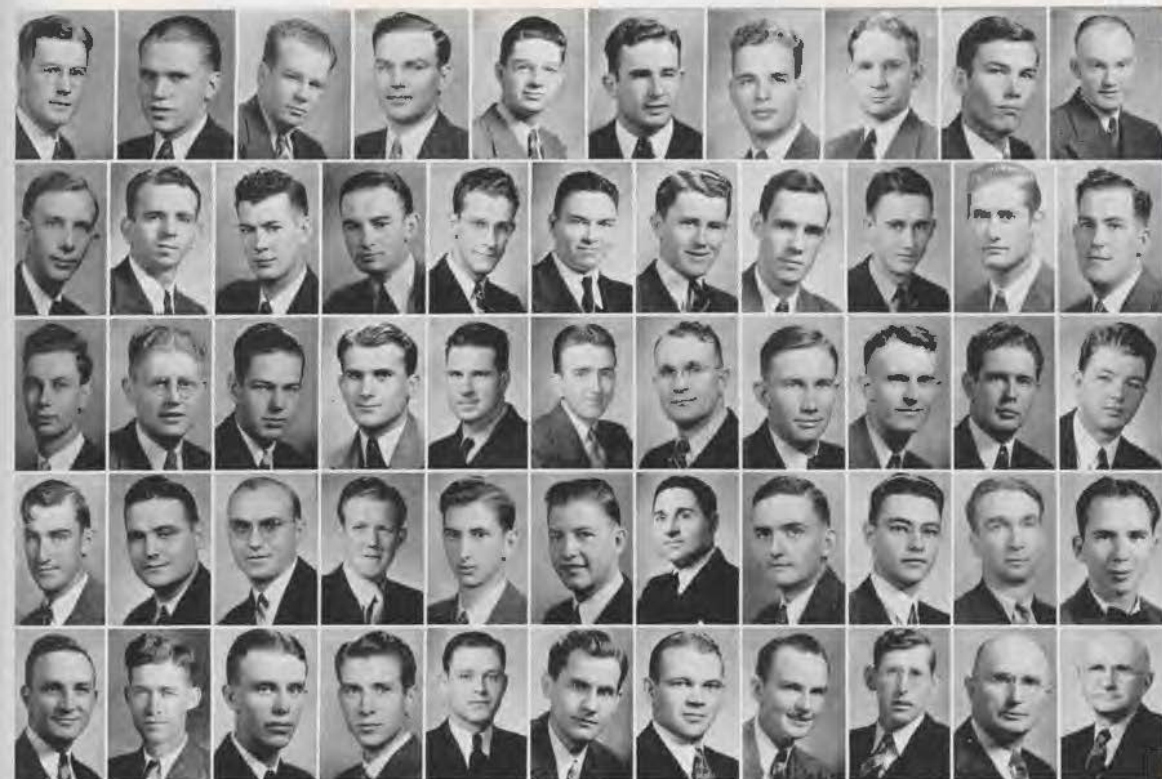


## Officers

EARL HUMBLE . . . . President, 1st Quarter

ELMER MORGAN . . . . President, 2nd Quarter





### Members

Meldon Lloyd  
 Willard Lloyd  
 Foster Lott  
 Charles Luck  
 Judson McAninch  
 Delbert McAtee  
 Clyde McCalman  
 Erwin McDonald  
 Lewis McMahan  
 E. O. Martindale  
 Lenox Medford  
 James Medley  
 Charles Meek  
 William Meyer

Chester Milam  
 Neil Modert  
 William Montgomery  
 David Moore  
 Irwin Moshier  
 Charles Nash  
 Carl Newland  
 Carl Overton  
 John Parrott  
 Ted Phelps  
 C. R. Pierce  
 Stanford Pierce  
 Tom Poole  
 Gus Poole

George Priddy  
 Curtis Puryear  
 Robert Randall  
 Paul Rea  
 Orville H. Roberts  
 C. D. Sallee, Jr.  
 C. H. Seaton  
 T. N. Shaddox  
 Fred Smith  
 Robert Smith  
 Herbert Sparler  
 John Ed Steeley  
 Claude Stripling  
 Everett Taylor

Au'ry Thomas  
 Alfred Vansant  
 A. W. Wagnon  
 Edmond Walker  
 Wayne Ward  
 Ermon Webb  
 Lehman Webb  
 Robert Wells  
 Glenn Womack  
 Henry Wright

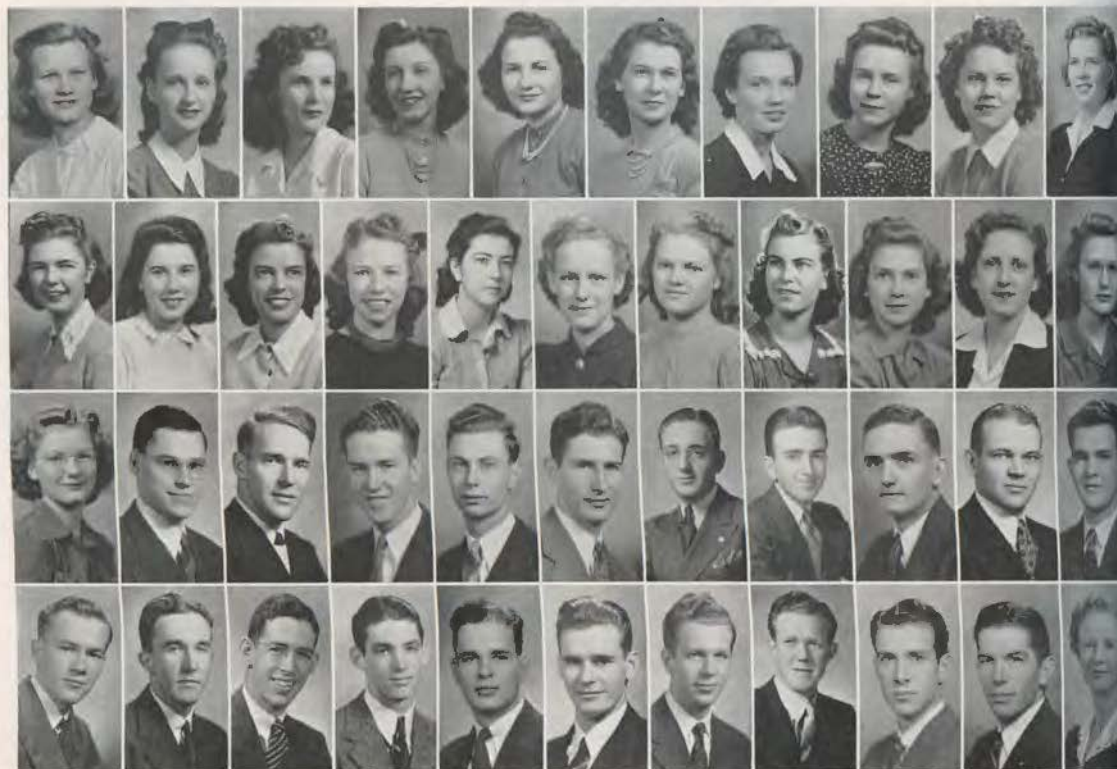
Sponsors  
 Dr. O. W. Yates  
 Dr. L. T. Wallace

### Officers

RAYMOND EARLY . President 3rd Quarter

WILSON DEESE . . . President, 4th Quarter





# Ouachita College Symphonic Choir

## *Sopranos*

Evelyn Bonham  
 Susan Bow  
 Berta Sue Copeland  
 Evelyn DeLoach  
 Esther Dixon  
 Margaret Haynes  
 Marilyn Henning  
 Margaret Hughes  
 Jeanne Johns  
 Lois Koch  
 Betsy Purifoy  
 Lyndall Sigsby

## *Altos*

Ann Blackburn  
 Virginia Bryant  
 Freda Cox  
 Martha Hairston  
 Martie Marie Lloyd  
 Frances Overton  
 Kathryn Raglin  
 Carolyn Simmons  
 Rosalea Webster  
 Virginia Webster

## *Tenors*

Millard Ross Cherry  
 Seibert Haley  
 Randolph Keith  
 Carl Overton  
 Donald Orr  
 Jerry Poole  
 Tom Poole  
 John Ed Steeley  
 Bob Wells

## *Basses*

Weldon Grafton  
 Jimmie Hawley  
 Paul Hogue  
 John Johnston  
 Leo Lewis  
 Clyde McCalman  
 T. D. McCulloch  
 Leon Shaddox  
 T. N. Shaddox  
 Wayne Ward

*DIRECTOR*  
 C. S. WHITE

*FACULTY ADVISOR*  
 MISS THELMA BATSON



First Row: Ann Blackburn, Casolyn Simmons, Mertie Marie Lloyd, Rosalea Webster, Susan Bow, Margaret Hughes, Esther Dixon, Lois Koch, Mrs. Siebert Haley.

Second row: Frances Overton, Virginia Bryant, Evelyn DeLoach, Jeanne Johns, Virginia Webster, Lyndall Sigsby, Berta Sue Copeland, Mary Sue Franks, Mary Ann Heath, Margaret Haynes, Freda Cox.

Third row: Jimmie Hawley, Paul Hogue, Weldon Grafton, Randolph Keith, Martha Hairston, Marilyn Henning, Kathryn Raglin, Evelyn Bonham, Millard Ross Cherry, Jerry Poole, Wayne Ward, Tom Poole.

Fourth row: Dewey Overton, Leon Shaddox, Robert Wells, T. D. McCulloch, Clyde McCalman, Leo Lewis, Donald Orr, Seibert Haley, John W. Johnston.





## Ministerial Auxiliary

### *Members*

Mrs. Horace Boyd  
 Mrs. Ray Branscum  
 Mrs. Wilson Deese  
 Mrs. Raymond Early  
 Mrs. George Fox  
 Mrs. Ed Harness

Mrs. Edgar Harvey  
 Mrs. Wade Scott Hopkins  
 Mrs. Robert D. Hughes  
 Mrs. Earl Humble  
 Mrs. Charles Luck  
 Mrs. Lenox Medford

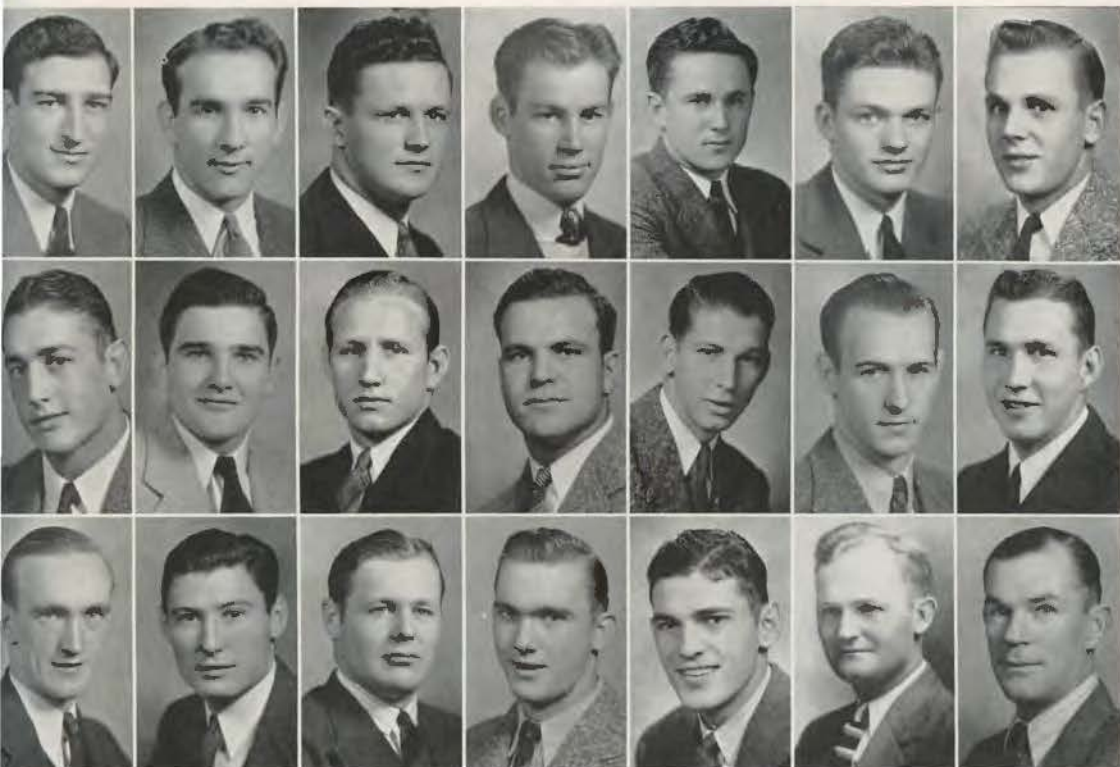
Mrs. Irwin Moshier  
 Mrs. Charles Nash  
 Mrs. Gus Poole  
 Mrs. Jesse Reed  
 Mrs. Dale Taylor

### *Not Pictured*

Mrs. Charles Burgess  
 Mrs. D. W. Deere  
 Mrs. Virgil DeFreece  
 Mrs. T. W. Dove  
 Mrs. W. B. Essman  
 Mrs. Seibert Haley  
 Mrs. Dell Hames

Mrs. Claris Johnson  
 Mrs. Iota Kibbe  
 Mrs. Lonnie Lassater  
 Mrs. Wesley Lindsey  
 Mrs. E. W. Lloyd  
 Mrs. Meldon Lloyd  
 Mrs. Dillard S. Miller

Mrs. Neil Modert  
 Mrs. Elmer Morgan  
 Mrs. W. E. Payton  
 Mrs. Stanford Pierce  
 Mrs. Curtis Puryear  
 Mrs. C. D. Sallee  
 Mrs. Walter Watts



## "O" Association

### Members

Carl Allen  
 Bernard Anderson  
 Chesley Billings  
 Leonard Clements  
 R. A. Davenport  
 Billy Gill East  
 Johnnie Furqueron  
 Hinsley Harp  
 Buddy Harris  
 J. W. Jones  
 Cecil Kemp

Jerry McFarland  
 Deno Nichols  
 Redger Parker  
 Orville Roberts  
 Oscar Smith  
 Charles Taylor  
 Alvin Williams  
 Sterling Williams

### Sponsors

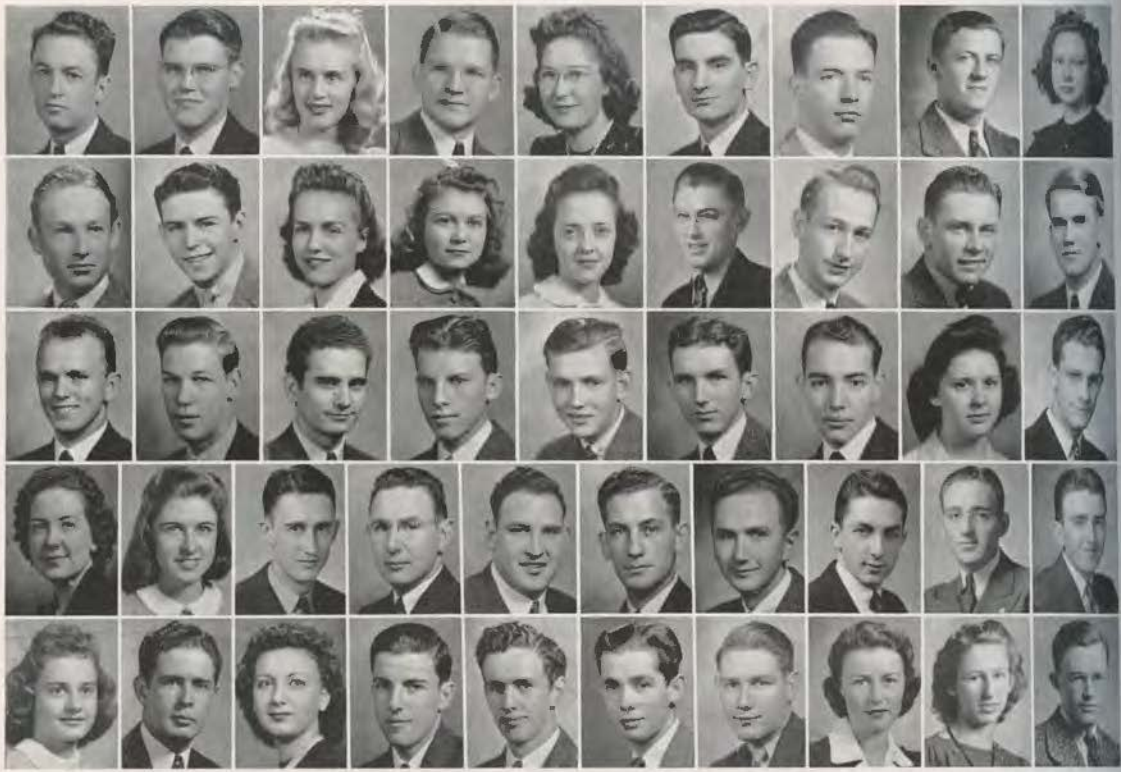
Coach W. W. Bradshaw  
 Coach W. I. Walton



### Officers

JACK McHANEY . . . . . President  
 WALTER RAMSEY . . . . . Vice-President  
 BILL HARGIS . . . . . Treasurer



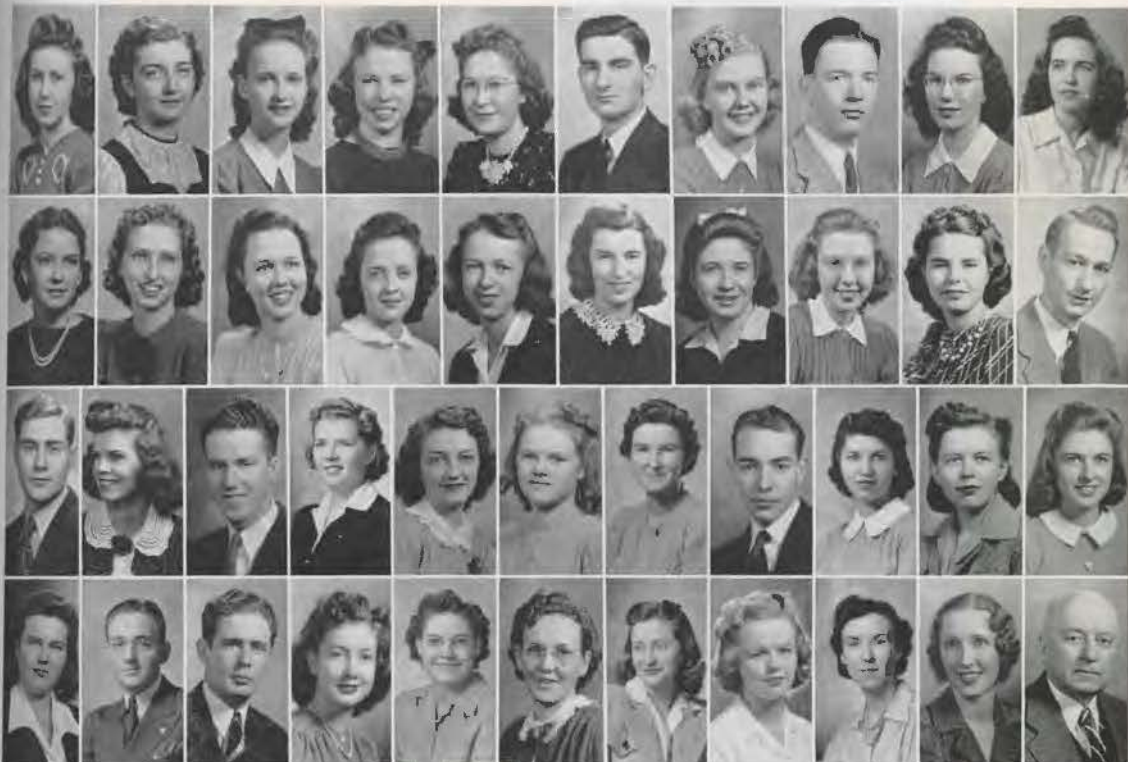


# Ouachita Band and Little Symphony

HAROLD BALDWIN . . . . . Band  
 JIMMIE BEALS . . . . . Band  
 HELEN BICKERS . . . . . Band  
 MARTIN BURNS . . . . . Little Symphony  
 MARY ALICE BURNS . . . . . Little Symphony  
 JACK CHITWOOD . . . . . Band, Little Symphony  
 H. W. CROMER . . . . . Band  
 RALPH CROSWELL . . . . . Band  
 JIMMIE LEE DuLANEY . . . . . Band  
 GLEN FAIR . . . . . Band  
 RONALD FERGUSON . . . . . Band  
 MARY KATHERYN FOX . . . . . Band  
 ELIZABETH GALLOWAY . . . . . Band, Little Symphony  
 JEANNETTE GARDINER . . . . . Little Symphony  
 BOB GARRETT . . . . . Little Symphony  
 JIMMY HOLLAND . . . . . Band, Little Symphony  
 EDWARD HUNNICUTT . . . . . Band  
 BILLY HURST . . . . . Band  
 LAWSON JACKS . . . . . Band  
 GENE JACKSON . . . . . Band  
 DONALD JONES . . . . . Little Symphony  
 STEWART LANDES . . . . . Band  
 LIVINGSTON LINCOLN . . . . . Band  
 CRAWFORD MARBURY . . . . . Band

BILLY MARTIN . . . . . Band, Little Symphony  
 ELLEN McKEE . . . . . Band  
 CHESTER MILAM . . . . . Little Symphony  
 NELL MONDY . . . . . Band  
 ANNIE KATHRYN MOORE . . . . . Band  
 IRWIN MOSHIER . . . . . Band, Little Symphony  
 JACK MOWREY . . . . . Band  
 EARL OLMSTEAD . . . . . Band  
 HERMAN ORR . . . . . Band, Little Symphony  
 WYATT PINKSTON . . . . . Band  
 JOE PIPKIN . . . . . Band  
 JERRY POOLE . . . . . Band  
 TOM POOLE . . . . . Band  
 DOROTHY RAINWATER . . . . . Band, Little Symphony  
 BOB RANDALL . . . . . Band  
 HELEN REAVES . . . . . Band  
 MACK SALE . . . . . Band  
 WALTER SMART . . . . . Band, Little Symphony  
 DELBERT SMITH . . . . . Little Symphony  
 STANLEY STANFORD . . . . . Band  
 VIRGINIA THOMPSON . . . . . Band, Little Symphony  
 LOLEEN TURNER . . . . . Little Symphony  
 STANLEY WILLIAMSON . . . . . Band





## Piano Class

### Members

Sue Furrow Adkins  
 Thelma Bleidt Banks  
 Susan Bow  
 Virginia Bryant  
 Mary Alice Burns  
 Jack Chitwood  
 Mary Helen Cossey  
 H. W. Cromer  
 DeLois Curry  
 Betty Frame Davidson  
 Mrs. Wilson Deese

Mary Sue Elliff  
 Mary Sue Franks  
 Jeanette Gardiner  
 Jessie Gladden  
 Harriet Grant  
 Anna Louise Harrison  
 Lucretia Henry  
 Emma Jean Hollon  
 Jimmy Holland  
 Ulysses Howard  
 Catherine Jordan

Randolph Keith  
 Lois Koch  
 Irene Lester  
 Mertie Marie Lloyd  
 Mrs. Charles Luck  
 Billy Martin  
 Dorothy Millsapps  
 Doris Minton  
 Annie Kathryn Moore  
 Mildred Munday  
 Jerry Poole

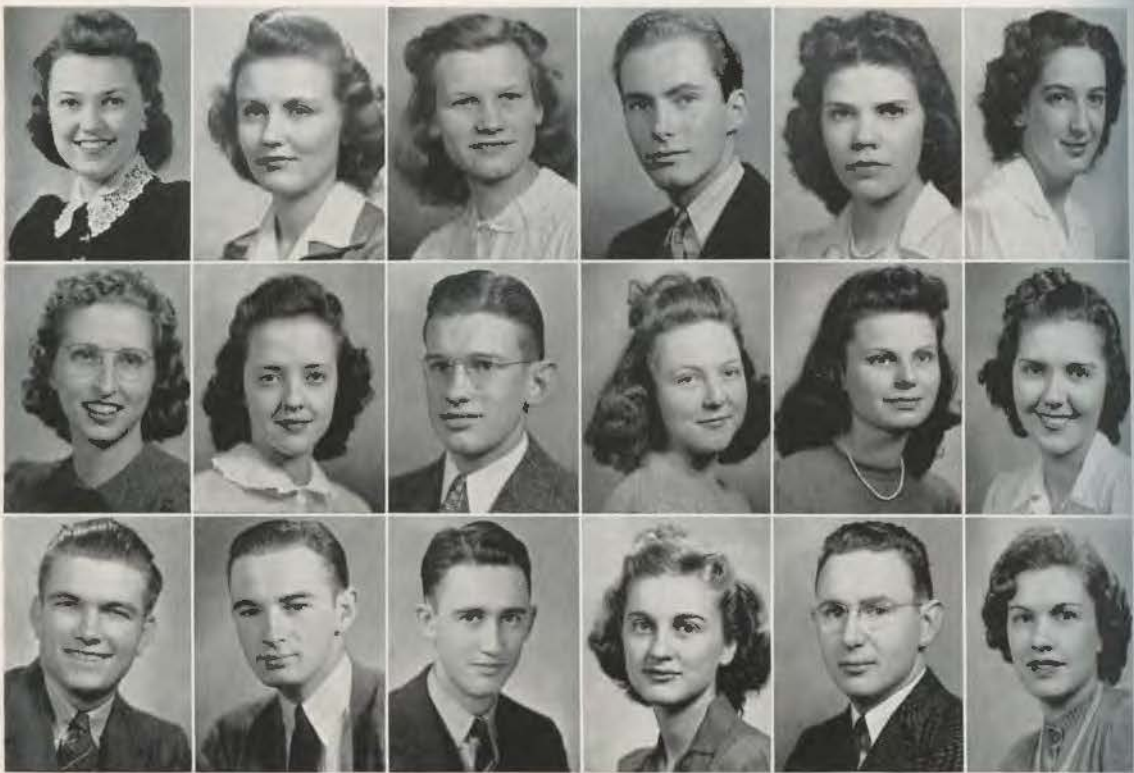
Bob Randall  
 Betty Stanfill  
 Mildred Strickland  
 Mrs. Dale Taylor  
 Marilyn Westbrook  
 Lynette Wilson

*Sponsors*  
 Miss Bowden  
 Mrs. Medlen  
 Mr. Mitchell

### Officers

DOROTHY ELLEN FRAZIER . . . *President*  
 PATSY CALDWELL . . . . . *Secretary*





## Ouachita Players

### Members

Evelyn Allen\*  
 Marjorie Allen  
 Evelyn Bonham  
 Wiley Caldwell  
 Phyllis Daily  
 Iris Douglas

Mary Sue Elliff  
 Jeanette Gardiner  
 Daniel Grant  
 Netabel Hardy  
 Ellen Johnson  
 Juanita Jordan

Gene Martin  
 Bill Meyer  
 Irwin Moshier  
 Mrs. Irwin Moshier  
 Jack Mowrey  
 Evelyn Myers

### Officers

NENO NOWLIN*	President
LAWSON HATFIELD	Vice-President
LOUISE BURNS*	Secretary
JACK McHANEY*	Treasurer
VIDA FAYE WILLIAMS	Reporter





## Ouachita Players

### *Members*

Earl Olmstead\*

Kathryn Raglin

Wayne Ward

Sue O'Neal

Carolyn Richardson

Emma Lou Weeks

Herbert Phillips

Barbara Rudolph

### *Sponsors*

Wilma Helen Phillips

Harriet Rudolph

Miss Harrington

Ruth Poteet

Mildred Skinner

Mrs. Rudolph

Charlene Quick

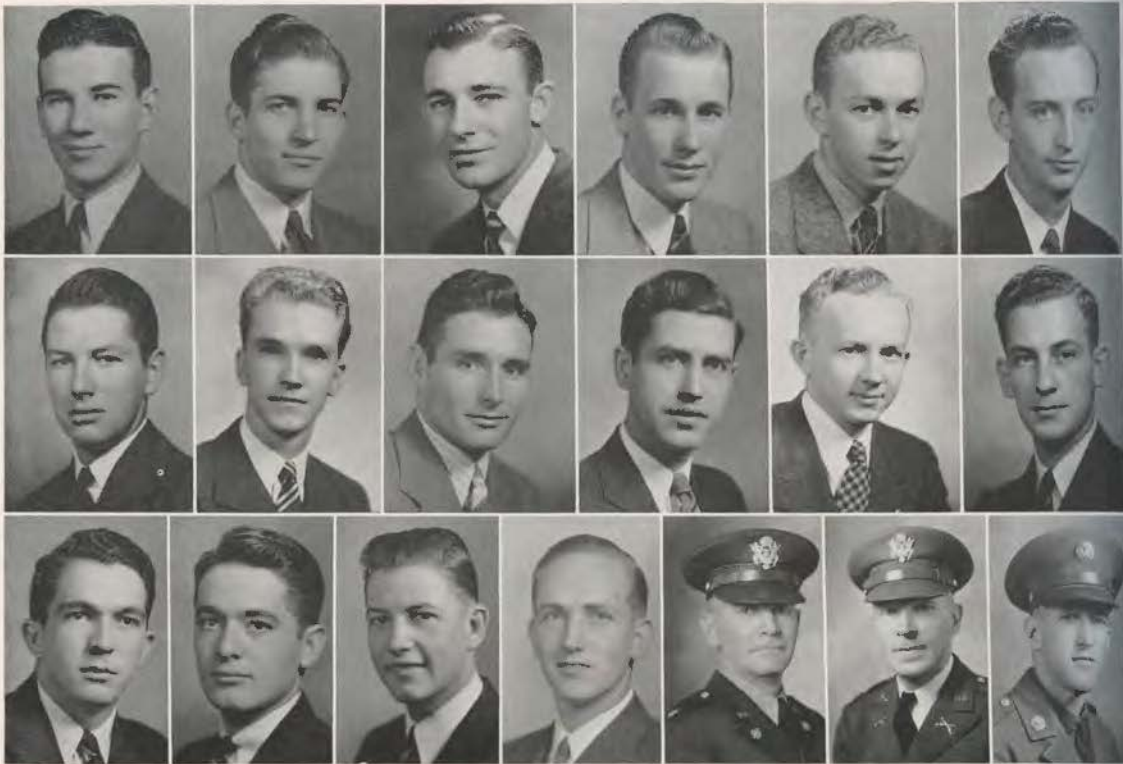
Dorothy Belle Smith

Newell Blakeley\*

Marilyn Thomas

\*Those of the Ouachita Players who are also members of the Alpha Psi Omega, a National Honorary Dramatic Organization.





## Rifle Club

### Members

Bill Abernathy  
 Paul Bowlin  
 Emery Deese  
 Bill Flynt  
 Charles Gladden  
 John David Grace  
 Johnny Hall

Wilson Hansard  
 Jack McHaney  
 Walter Mizell  
 Johnny Mowrey  
 Herman Orr  
 Aubrey Park  
 Charles Price

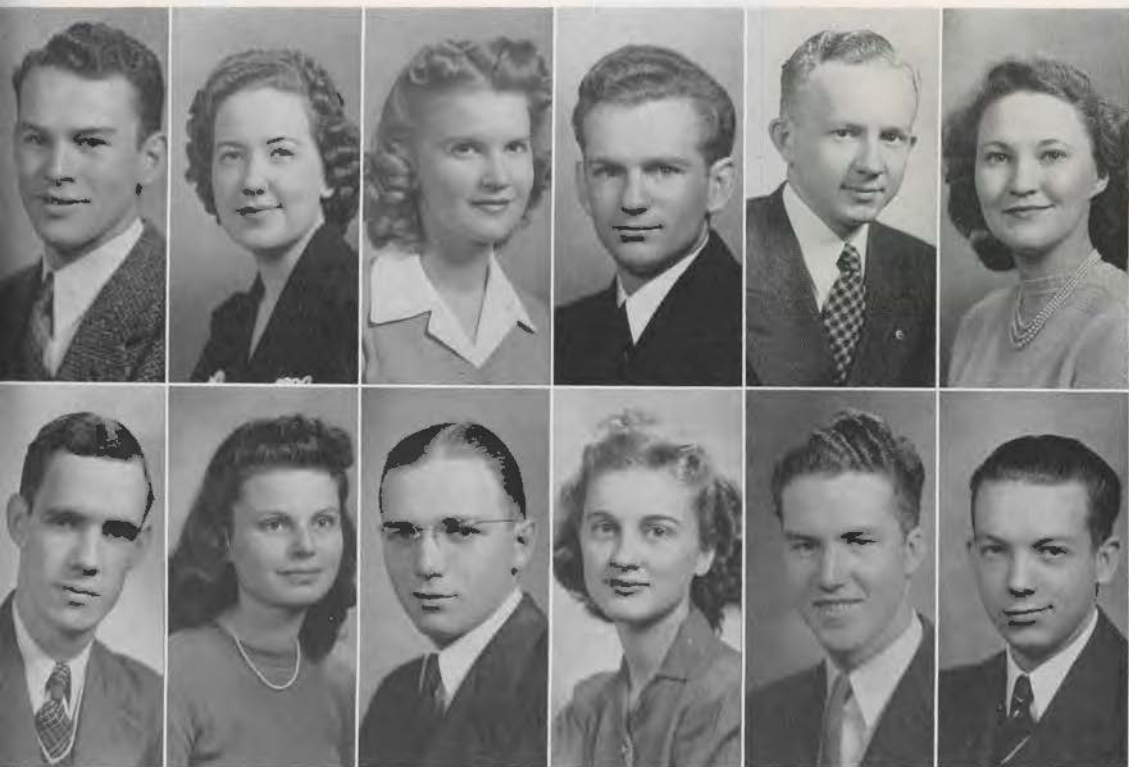
Robert A. Smith  
 Nolan Wright

*Sponsors*  
 Lt. Col. Henley  
 Capt. Maurer  
 Sgt. Byram

### Officers

PAT MOSELEY	Reporter
PRINTES PARKS	Vice-President
JACK CHITWOOD	Secretary
FRANK THOMPSON	Treasurer
PAT MOSELEY	Reporter





## Student Senate

- BILLY VESTAL . . . . . *President of Student Association*
- NELL MONDY . . . . . *Vice-President of Student Association*
- LOUISE BURNS . . . . . *Secretary*
- PAT MOSELEY . . . . . *Treasurer*
- JOHNNY MOWREY . . . . . *President of Senior Class*
- CAROLYN JANE CARPENTER . . . . . *Senior Class Senator*
- DAVID MOORE . . . . . *President of Junior Class*
- ELLEN JOHNSON . . . . . *Junior Class Senator*
- FRANK THOMPSON . . . . . *President of Sophomore Class*
- MRS. IRWIN MOSHIER . . . . . *Sophomore Class Senator*
- RANDOLPH KEITH . . . . . *President of Freshman Class*
- RALDON WILES . . . . . *Editor of Ouachita Signal*



## Y. W. A. Cabinet

MARJORIE ALLEN . . . . .	<i>President</i>
FLOY GRACE TAYLOR . . . . .	<i>Vice-President</i>
MARY SUE ELLIFF . . . . .	<i>Secretary</i>
MARTHA HAIRSTON . . . . .	<i>Treasurer</i>
MARTHA CORN . . . . .	<i>Reporter</i>
EVELYN HARDEN . . . . .	<i>Mission Study Chairman</i>
MILDRED STRICKLAND . . . . .	<i>Personal Service Chairman</i>
MILDRED SKINNER . . . . .	<i>Chorister</i>
JACQUELINE CLICK . . . . .	<i>Pianist</i>
ELOISE LANDERS . . . . .	<i>Librarian</i>
SARA BIGGS . . . . .	<i>Scrapbook Chairman</i>
MRS. E. M. BLAKE . . . . .	<i>Sponsor</i>





## Ripples Staff

BILL RICHARDSON . . . . Associate Editor  
 MILDRED SKINNER . . . . Proof Reader  
 RALDON WILES . . . . Short Story Editor  
 LUCRETIA HENRY . . . . Essay Editor  
 NEVILLE SWAIM . . . . Poetry Editor  
 LOUISE BURNS . . . . Dramatic Editor

ROBERT WALKER . . . . Art Editor  
 RONALD FERGUSON . . . . Art Editor  
 SARA BIGGS . . . . Staff Secretary  
 FRANCES OVERTON . . . . Staff Secretary  
 MARY ELIZABETH TOLSON . Staff Secretary  
 JOHNNIE ASHCRAFT . Circulation Manager

MISS ALBERTA HARRINGTON . . . Faculty Advisor

HARRIET GRANT . . . . Editor  
 STANLEY WILLIAMSON . Business Mgr.





## Signal Staff

ERWIN L. McDONALD . *Director, News Bureau*  
 DANIEL GRANT . . . . . *Sports Edi'or*  
 JAMES TAYLOR . . . . . *Sports Writer*  
 GENE MARTIN . . . . . *Sports Writer*  
 RONALD FERGUSON . . . . . *Art Editor*  
 HARRIET GRANT . . . . . *Columnist*  
 MARGARET HAYNES . . . . . *Columnist*  
 MARTHA HAIRSTON . . . . . *Columnist*  
 LYNNETTE WILSON . . . . . *Reporter*

MARTHA CORN . . . . . *Reporter*  
 ALICE GARDNER . . . . . *Reporter*  
 BILL WHARTON . . . . . *Reporter*  
 MARILYN THOMAS . . . . . *Reporter*  
 MARIESTES HANSON . . . . . *Reporter*  
 NEVILLE SWAIM . . . . . *Reporter*  
 MERCEDES BALL . . . . *Secretary and Typist*  
 JIMMIE BEALS . *Assistant Business Manager*  
 ELI GARY . . . . . *Circulation Manager*



RALDON WILES . . . . . *Editor*  
 BILL ABERNATHY . . *Business Manager*



## Ouachitonian Staff

TRACY BARRETT . . . . . *Associate Editor*  
 ELI GARY . . . . . *Associate Editor*  
 EVELYN MYERS . . . . . *Associate Editor*  
 WALLACE DAUGHTRY . *Associate Bus. Mgr.*  
 JOYCE LESLIE . . . . . *Staff Secretary*  
 DANIEL GRANT . . . . . *Sports Editor*

FRANK M. COCHRAN . . . . . *Picture Editor*  
 LOUISE BURNS . . . . . *Senior Class Editor*  
 BILL ABERNATHY . . . . . *Caption Writer*  
 JEANNE JOHNS . . . . . *Calendar Writer*  
 ROBERT WALKER . . . . . *Artist*  
 LOUIS GENE NICHOLS . . . . . *Sports Writer*

RALDON WILES . . . . . *Proof Reader*

J. D. FOSTER . . . . . *Editor*  
 WALTER MIZELL . . *Business Manager*







HOME ECONOMICS BUILDING



PRESIDENT'S HOME

F  
E  
A  
T  
U  
R  
E  
S



*Student Center*



*Printed by permission of Esquire Magazine*





Mr. Phillip Varga

a. Varga  
Esq

J. D. Foster, Editor  
The Ouachitonian  
Arkadelphia, Arkansas

Dear Mr. Foster:

I bend low from the waist to your staff for honoring me with the pleasant task of judging The Ouachitonian's beauty contest.

Because Charlene Quick seemed to be most representative of the particular charm of the folk in your part of the country, I would chose her to head the parade of Arkadelphia's lovelies.

Cordially yours,

*P. Varga*





*Miss Charlene Quick*

*First Choice*







*Miss Marjorie Allen*

*Second Choice*



*Miss Evelyn Allen*



*Miss Kitty Moore*



*Miss Carolyn Richardson*



*Miss Mildred Skinner*

*Miss Mildred Skinner*



*Football  
Queen*

*Maids of  
Honor*



*Audry Ballard*

*Betty Frame Davidson*

*Dorothy Belle Smith*

*Rosamond Benton*

*Annie Kathryn Moore*

*Mrs. Charles Taylor*

*Virginia Cannon*

*Sara Moore*

*Frances Tull*



# WHO'S WHO IN AMERICAN



The following write-ups are those which appear in the 1942 edition of *Who's Who Among Students in American Universities and Colleges*, reprinted by permission of the publishers.

**ABERNATHY, William Crawford**, Born May 23, 1921. Majored in Chemistry. Will receive B. S. Degree and plans to be a Chemist. President of Freshman Class, Treasurer of Student Council, Business Manager of School Paper, Lettered in Rifle Team, Cheerleader, Member of Yearbook Staff and Chemistry Club. Hobby: Photography. Home: Russell St., Fordyce, Arkansas. 92



**ALLEN, Marjorie**, Born November 30, 1920. Majored in English. Will receive A. B. Degree and plans to teach. President and Vice-President of Y. W. A., Secretary of Sophomore and Senior Class, Reporter for Piano Class, Battalion Sponsor, Secretary of English Honor Society. Hobby: Flowers. Home: Bradley, Arkansas.

**BLAKELY, Newell Hillis**, Born July 23, 1919. Majored in Speech. Will receive A. B. Degree and plans to be a Director of Dramatics. President of Red Shirts, President-Elect of Senior Class, Vice-President of Alpha Psi Omega, Stage Manager of Dramatic Club. Home: Gurdon, Arkansas.



**BROWN, William Holland**, Born April 3, 1921. Majored in Social Science. Will receive A. B. Degree and plans a Business Career. Rho Sigma. President of Junior Class, Officer of Fraternity, Member of I. R. C. and Cadet Officers Club. Hobby: Hunting and fishing. Home: Benton, Arkansas. 92

**BURNS, Ila Louise**, Born November 26, 1922. Majored in Speech. Will receive A. B. degree and plans to teach Speech in High School. Secretary of Student Body, President of Alpha Psi Omega, Reporter of Senior Class, Senior Class Editor of Yearbook, Secretary of Ouachita Players, Cadet Sponsor of R. O. T. C., Vice-President of Y. W. A., Vice-President of Pi Kappa Delta. Hobby: Collecting poetry. Home: 416 N. Jackson, Magnolia, Arkansas.



**EAST, William Gill**, Born October 19, 1920. Majored in Math and Military. Will receive B. S. Degree and plans to be an Army Officer or Boy Scout Executive. Sigma Alpha Sigma, On Honor Roll, President of Sigma Alpha Sigma, Captain of Track Team, Treasurer of Junior Class, R. O. T. C. Cadet Captain, Member of English and Math Honor Societies. Hobby: Hunting. Home: 222 Hardin, Arkadeiphia, Arkansas.

**FRAZIER, Dorothy Ellen**, Born September 22, 1921. Majored in Music. Will receive A. B. Degree and plans to teach Piano. Secretary of College Y. W. A., Secretary of Junior Class, President of Piano Class, President of Physical Education Club, Football Homecoming Queen, Member of E. E. E. Sorority. Hobby: Golfing. Home: Bethel Street, Russellville, Kentucky.



# COLLEGES AND UNIVERSITIES

**GRANT, Grace Harriet, Born March 20, 1922.** Majored in Home Economics. Will receive B. S. Degree and plans a Religious Career. President of English Honor Society, Editor of Ripples, Social Vice-President of Baptist Student Union of Ouachita, Vice-President of Physical Education Club, Columnist for School Paper. Hobby: Photography. Home: 420 Ouachita, Arkadelphia, Arkansas.



**McHANEY, Jack, Born March 3, 1920.** Majored in Speech. Will receive A. B. Degree and plans an Army Career. President of Sophomore Class, Business Manager of Yearbook, Cadet Major in R. O. T. C., Captain of Football Team, Officer in Rifle Club, Member of Alpha Psi Omega, Member of Aviation Club, lettered in Basketball, Track and Football. Hobby: Collecting. Home: Smackover, Arkansas.

**ROGERS, Janice, Born December 1, 1921.** Majored in Home Economics, Will receive B. S. Degree and plans to be a Home Economics Teacher. Vice-President of Sophomore Class and Senior Class, Member of E. E. E. Social Club, Social Chairman of Home Economics Club. Hobby: Tennis. Home: 406 East Second, Pine Bluff, Arkansas.



**VESTAL, William Arthur, Born January 13, 1920.** Majored in Math. Will receive B. S. Degree and plans to be an Electrical Engineer. Sigma Alpha Sigma, President of Student Association, Captain of R. O. T. C., Head Cheerleader, Vice-President of Sigma Alpha Sigma, Vice-President of Math Honor Society, and Chemistry Club. Hobby: Amateur Radio Station W5FFJ. Home: 1221 5th St., Arkadelphia, Arkansas.

**WHITE, Clarence S., Born December 9, 1912.** Majored in Social Science. Will receive A. B. Degree and plans to work in Field of Religious Education. Sigma Alpha Sigma, President of Freshman Class and Symphonic Choir, Tenor Soloist for Choir, Writer of Campus Personalities Column, Director of Symphonic Choir, Representative to Student Congress, Member of I. R. C. Hobby: Singing. Home: 1515 Booker Street, Little Rock, Arkansas.

**MONDY, Nell Irene, Born October 27, 1921.** Majored in Chemistry. Will receive B. S. Degree and plans to be a College Professor. Secretary of Freshman Class, Freshman Representative Girls' Student Government, Reporter for Home Economics Club and Y. W. A., Vice-President of Girls Student Council and Student Government, Member of Chemistry Club and Band. Hobby: Flower gardening. Home: Bland St., Pochontas, Arkansas.



**MOWREY, John Franklin, Born April 28, 1921.** Majored in Math. Will receive B. A. Degree and plans to be an Army Officer. President of Senior Class, Treasurer of Junior Class, President of Math Honor Society, Secretary-Treasurer of Rifle Club, Cadet Captain in R. O. T. C., lettered two years on Rifle Team, Member of Math Honor Society and Cadet Officers' Club. Hobby: Small hat collection. Home: 1022 South 17th St., Fort Smith, Ark.

## NOT PICTURED

**MOORE, David O., Born March 11, 1921.** Majored in History. Will receive A. B. Degree and plans to be a Minister. Won four Debates in National Debate Tourney, won 23 out of 25 debates in one month, won first in State in Debate, President of Junior Class, Member of Pi Kappa Delta and Ministerial Association. Hobby: Collecting poems. Home: Rt. 4, Box 90, Texarkana, Arkansas.





BETTY FRAME DAVIDSON, Most Popular; Because she's been Carnival Queen, a football maid, and is a W. C. F. Better known as "Beefus."

JACK McHANEY, Most Popular Boy; Because he's taken the lead in practically every campus activity—Ouchita Players, Alpha Psi Omega, Cadet Major in R. O. T. C., a Red Shirt, and Who's Who in American Colleges. Better known as "Mac."



MILDRED SKINNER, Most Collegiate; Because she's a cheerleader, a Hi-Hat, and takes an active part in campus dramatics. Better known as "Skippy."

CARL ALLEN, Best Athlete; Because he's an All-State back, and member of Red Shirts. Better known as "Snoz."



BILLY VESTAL, Most Intellectual; Because he's not only "racked up" practically all "A's" but is President of the Student Body, a Cheerleader, Adjutant in R. O. T. C., Who's Who in American Colleges, and an S. A. S. Better known as "Ves."

NELL MONDY, Most Intellectual; Because she's Vice-President of the Student Body, a Chemistry shark, listed in Who's Who in American Colleges, and on the Honor Roll.



# OUACHITA'S CAMPUS

LYNETTE WILSON, Life of the Party (Girl); Because she's a loyal booster of all campus activities and a Hi-Hat.



EARL OLMSTEAD, Life of the Party (Boy); Because he's "King of Campus Jive"; President of Ouachita Players; and Assistant director of band. Better known as "Obbie."

HARRIET GRANT, Most Versatile; Because she's a leader in literary fields, being editor of "Ripples, a debater, and a top-ranking student, and listed in Who's Who in American Colleges.



HOLLAND BROWN, Most Collegiate Boy; Because he's listed in Who's Who in American Colleges; manager of football team, and a Red Shirt. Better known as "Beetle."

DOROTHY RAINWATER, Cutest Girl; Because she's drum majorette, a W. C. F., and secretary of her class. Better known as "Dottie."





GYMNASIUM



FIELD HOUSE



S  
P  
O  
R  
T  
S  
  
R  
O  
T  
C  
C



1. WE BEAT THE TEAM THAT BEAT THE NATIONAL CHAMPS.
2. MEMBERS NAME IT—WE DO IT.
3. POTENTIAL McARTHURS.





COACH W. I. WALTON

## Coach

Coach W. I. Walton came to Ouachita as Athletic Director in 1934 and since that time has built a reputation for Ouachita's football teams that equals, if not excels, that of the days of Morley Jennings. The recognition of Coach Walton and his teams was spread even farther this year by the spectacular performance of the Tigers in remaining undefeated and unscored on against state competition to annex the state championship. This was the second championship team produced since Coach Walton took over the reins.

Some say that the undented forward wall of the 1941 eleven was the main cog in the Tiger machine, while others say that the backfield was the smartest, fastest, and hardest hitting one ever produced in these parts, but the fact remains that Coach Bill Walton put together one of the best balanced elevens in the history of Ouachita.

### CO-CAPTAINS



JACK McHANEY. "Mac" faithfully carried out his role as blocking back this season and his line-backing, signal-calling, and alertness on pass defense proved to be a deciding factor in more than one of the Tiger's games.

WALTER RAMSEY. "Jiggs" held down the tackle position in the line and was a "big" reason why Ouachita's goal line was uncrossed in state competition throughout the season.

### STUDENT MANAGERS



JOHN ANDERSON

JIMMY GRIFFITH

BILLY NUTT

JACK WILSON



# FOOTBALL ROSTER

CARL ALLEN *Back*  
 Sophomore; Magnolia; Weight 168, Height 6:00.

BERNARD "HUNK" ANDERSON *Back*  
 Senior; North Little Rock; Weight 165, Height 5:08.

CHESLEY BILLINGS *Tackle*  
 Sophomore; Marion; Weight 200, Height 6:01.

DON BURTON *Back*  
 Freshman; Cleburne, Tex.; Weight 150, Height 5:09.

R. A. DAVENPORT *Guard*  
 Sophomore; Bauxite; Weight 180, Height 5:10.

JOE D. GAULT, JR. *End*  
 Senior; Dardanelle; Weight 200, Height 6:00.

ORLAND "BUDDY" HARRIS *Center*  
 Sophomore; Bearden; Weight 176, Height 6:00.

BILL "COTTON" JONES *Guard*  
 Freshman; Cleburne, Tex.; Weight 168, Height 5:09.

CECIL KEMP *Center*  
 Sophomore; Warren; Weight 190, Height 6:01.

W. S. LAFITTE *End*  
 Sophomore; Pine Bluff; Weight 175, Height 6:01.

CHARLES LEDBETTER *Guard*  
 Freshman; Fordyce; Weight 168, Height 5:10.

JACKIE MORRISON *Back*  
 Sophomore; McGehee; Weight 160, Height 5:10.

JACK McHANEY *Back*  
 Senior; Smackover; Weight 180, Height 6:00.

LOUIS NICHOLS *Back*  
 Junior; Warren; Weight 160, Height 5:10.

REDGER PARKER *Back*  
 Sophomore; Russellville; Weight 171; Height 5:10.

WALTER "JIGGS" RAMSEY *Tackle*  
 Senior; Detont; Weight 202, Height 6:03.

OSCAR SMITH *End*  
 Sophomore; El Dorado; Weight 165, Height 6:00.

RALPH STOCKEMER *Guard*  
 Junior; Huttig; Weight 190, Height 6:00.

RALPH TURNER *Back*  
 Senior; Newport; Weight 165, Height 6:00.

WARREN UNDERWOOD *Back*  
 Freshman; Nashville; Weight 165, Height 5:10.

STERLING WILLIAMS *End*  
 Sophomore; North Little Rock; Wt. 172, Height 5:11.

JOHN YANCEY *Guard*  
 Sophomore; Little Rock; Weight 196, Height 6:01.

CHARLES TAYLOR *Guard*  
 Senior; Newport; Weight 195, Height 5:10.

HINSLEY HARP *Tackle*  
 Junior; Booneville; Weight 200, Height 6:01.

ROBERT "FLY" SMITH *Back*  
 Freshman; McGehee; Weight 145, Height 5:07.





*Stockemer's educated toe at work against the bewildered Reddies*



**CARL ALLEN**—Acclaimed in his freshman year as one of Ouachita's greatest running backs, "Snoz" assured himself of a place among the immortals of Ouachita by his brilliant Sophomore performance. Carl is not only an exceptional ball carrier, passer, and punter, but has proved himself an excellent blocker as well. With two All-State selections under his belt, Carl is expected to be not just "one" of the best next season but the "best" in Ouachita history.

**OUACHITA . . . . . 7**  
**HENDERSON . . . . . 0**

The Tigers took pleasure in giving the Henderson Reddies from across the ravine a 7-to-0 defeat in the season opener, played under the lights at A. U. Williams Field. Cecil Kemp, sophomore center, threw a monkey wrench into the Reddie machine when he intercepted Vernon Turk's pass late in the first quarter and galloped 35 yards for the score. The Tiger line stopped Henderson's only threat like a stone-wall when the Reddies had four down to make six yards for a touchdown in the second quarter. The last half of the game was played almost entirely in the Reddies' territory, with the Tigers driving inside the 25-yard line four times in the last quarter. The Reddie fans yelled "lucky" break, but the Tigers would let them try again on Thanksgiving Day.





*Allen sweeps the end behind the fancy stepping Tigers*

<b>OUACHITA</b> . . . . .	<b>19</b>
<b>STATE TEACHERS</b> . . . . .	<b>0</b>

A train load of Ouachita rooters invaded the State Teachers' campus at Conway, October 10, to beat the Bears or bust, and before nightfall the mighty "wows" of former days were beaten. It was the first victory in four years over the Teachers, and the 19-0 whitewashing came as a climax to the efforts of Coach Walton. The Ouachita forward wall kept McGibbony and Burton bottled up throughout the game and opened up holes for Carl Allen and Jackie Morrison, fancy stepping backs. It took twelve first downs to make the first touchdown, which came just before the half ended after Allen, Morrison, and Anderson had brought the ball to the goal line. Allen accounted for two of the touchdowns, with Anderson scoring the third. "Chuck" Taylor place kicked the only extra point.



**BERNARD ANDERSON** — "Hunk" came up the hard way, ending his football in a blaze of glory, and is truly the type of player that every coach would like to have on his team. Capable of running every backfield position with equal efficiency, he is a very valuable man to have around any football team. Gaining acclaim for his ability which has been evident to all Tiger supporters since he has been connected with Ouachita football, he was placed on the All-State team for the second straight year.



*A wedge through the middle nets a score for the hustling Tigers*



JOE D. GAULT—A smashing end with the weight to follow through, Joe D. was a man dreaded by all foes of the Tigers. Always a threat on the offense and a thorn in the flesh of the enemy on defense, Gault readily deserves his position on the All-State team in his last year with the Champion Tigers.

OUACHITA . . . . .	7
ARKANSAS TECH . . . . .	0

Ouachita and Tech alone remained undefeated and unscored on in the state, and the Tigers had to play the Wonder Boys on foreign soil. The Tech student body had prepared for their Homecoming celebration with exhibits of the Wonder Boys taking the Tigers to town, running through the entire Tiger team, etc., and a Victory Ball had been planned. It was almost convincing on paper but that night on a wind-frozen gridiron the Tigers made the shivering fans wonder about their Wonder Boys by defeating them 7 to 0. As in the Teachers' game, the Bengals stuck to the ground game with the exception of two passes, and while rolling up eleven first downs they held the Teachers to only two. Allen and Morrison took the ball to the Tech 19 in the second quarter and Morrison broke loose from there and scored standing up. Taylor, Hargis, Gault, and Yancey shone in smearing the ground plays, while Nichols, Kemp, and McHaney were the main factors in pass defense.





*Allen slips off tackle to score against the Bears*

<b>OUACHITA . . . . .</b>	<b>14</b>
<b>STATE TEACHERS . . . . .</b>	<b>0</b>

Coach Walton's Tigers had now successfully defended its goal against all of the colleges in the "Big Four" competition but had it to do all over again under the new "home-and-home" agreement. An improved team from the State Teachers was next on the list for Ouachita, and it was the Tiger line and Carl Allen that proved again to be too much for the dethroned Bears. Ramsey, Stockemer, and Billings at tackles, and Hargis, Yancey, and Taylor at guards, with Kemp at center, made a formidable barrier that the Bears couldn't crack. Allen, Anderson, and Nichols figured in two touchdown drives with Anderson scoring on the first and Allen the second.



**HINSELY HARP**—With another year to go, Co-Captain-elect Harp, a stalwart lineman, will again be the bulwark of the Tiger defense. Although handicapped with injuries for a large part of the season, Harp came through when he was needed and was a great factor in the decisive games for the state championship.





*A Tech pass receiver smothered by seven Bengals*



**CECIL KEMP**—A sensation in his Freshman year, Kemp blossomed into one of Arkansas' greatest all-time centers. A sixty-minute man from the very beginning, Cecil was a most essential man to the Tigers. A bone-crushing line-backer who always had a habit of intercepting opponent's passes and running for touchdowns with the ease of a back, Kemp's unanimous selection on the All-State team can easily be understood.

<b>OUACHITA</b> . . . . .	<b>26</b>
<b>ARKANSAS TECH</b> . . . . .	<b>0</b>

Still undefeated and unscored on by a state team, the Ouachita Tigers needed only to defeat Tech to clinch the State Championship, which would be Coach Walton's second in eight years at Ouachita. One of the largest crowds in many years came to see this championship game, which turned out to be the fastest, razzle-dozzle game of the season. The Tiger steam roller was too much for Tucker's Techmen, and in winning, 26 to 0, they scored almost every way in the book. In the first quarter Stockemer place kicked the ball through the uprights for a field goal, and later in the quarter, after Harp recovered a kick which was blocked by Gault, Allen carried the ball across by plunges. LaFitte scored in the third quarter on a pass from Anderson, and Kemp scored on a pass interception in the last quarter. In the same quarter Taylor added another field goal to the Tigers' total.



*The Beauties, inspirations of the Beasts*

OUACHITA	.	.	.	.	.	.	.	.	.	7
HENDERSON	.	.	.	.	.	.	.	.	.	0

Thanksgiving Day, on Haygood Field, the State Champion Ouachita Tigers met a vengeful team of Henderson Reddies, who faught it out on even terms for three quarters, but the Bengals finally wore the Redmen down in the fourth quarter, with "Dub" LaFitte taking the touchdown pass on the five from Allen. The Reddies made their threat to the Tiger goal line late in the first quarter when it was first down with four yards to a touchdown. With a clean slate at stake the line held four times to end the season without being scored on by a college in Arkansas. The Tigers came through in fine form, regardless of an expected let-down after having already won the state title.



W. S. LAFITTE—"Foots" became All-State end for the second straight time and was a steady threat on offense with his pass catching ability. His being leading scorer for the Tigers in his freshman year proved to be a handicap in the next season, but although he was closely watched by every opponent, his ability as a decoy, hard tackler, and pass snatcher, earned for LaFitte All-State recognition again this year.





"Bowl-head" tallies in the Rock Bowl

OUT-OF-STATE GAMES

October 4

Ouachita . . . . . 0  
Pensacola Naval Air Base 7

October 24

Ouachita . . . . . 0  
East Texas Teachers . . . 14

November 15

Ouachita . . . . . 6  
Louisiana Normal . . . . . 7

December 6

(Oil Bowl)

Ouachita . . . . . 55  
32nd Army Division . . . . . 7

SEASON TOTALS

(All Games)

Ouachita . . . . . 147  
Opponents . . . . . 37

<b>OUACHITA</b>	. . . . .	<b>6</b>
<b>ALL-STARS</b>	. . . . .	<b>2</b>

After defeating the 32nd Division Army team in a post-season Oil Bowl game, Coach Walton's Tigers were invited to the Rock Bowl in Little Rock, on New Year's Day. Their opponents were the College All-Stars, coached by Duke Wells of Henderson, and George Cole of the University of Arkansas. Over 5,000 fans in the Little Rock High School Stadium saw that dependable Tiger line hold off the enemy on the goal line for four straight downs on two separate occasions in the last quarter. Sterling Williams, Tiger end, had previously scored from the 11-yard line on an end-around play, to give Ouachita a 6-to-0 lead. With the ball in Ouachita's possession on their own one-foot line, and just seconds left in the game, Allen chose to give the All-Stars an intentional safety, worth two points, which brought the ball out to the 20. Technically, then, the Tigers remained unscored on by an Arkansas opponent during the entire season.







COACH W. W. BRADSHAW

# Basketball Coach

Coach Wesley Bradshaw's second year as Director of Athletics and basketball coach proved to be even more spectacular than his first. When he announced that he would take his team, which won second place in the state, to the National A. A. U. Tournament at Denver, the leading sports scribes throughout the state gave it only a passing thought and figured that the most the six players would get was the ride to Denver and back. When news of the tournament results came in, however, the Tigers rated three consecutive streamer headlines, telling how Bradshaw's boys had upset two of the better teams and had become the first team in Arkansas history to win two games in the National tournament.

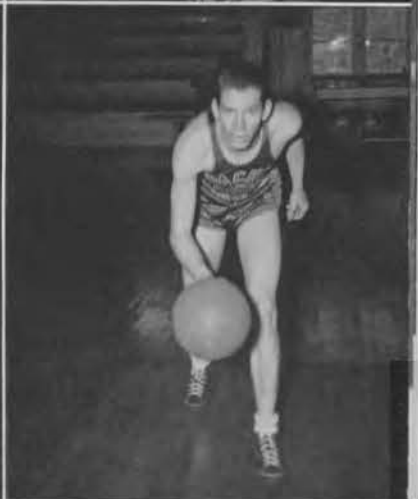
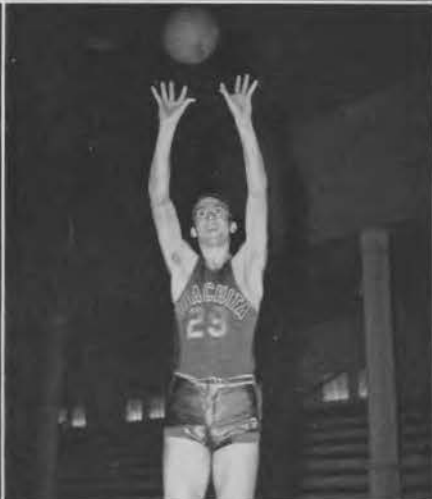
Coach Bradshaw has proved to the fans of the state that his success last year was not beginner's luck and is respected by the students for the high moral standard and clean sportsmanship he teaches his boys.

# Basketball Roster

- STERLING WILLIAMS . . . . . Guard  
Height 6:00, Sophomore, North Little Rock.
- ORVILLE ROBERTS . . . . . Forward  
Height 6:03, Sophomore, Harrison.
- LOUIS GENE NICHOLS . . . . . Forward  
Height 5:11, Junior, Warren.
- JOHNNY FURQUERON . . . . . Guard  
Height 6:00, Junior, El Dorado.
- ALVIN WILLIAMS . . . . . Center  
Height 6:05, Sophomore, Little Rock.
- LEONARD CLEMENTS . . . . . Center  
Height 6:05, Sophomore, New Edinburg.
- JERRY McFARLAND . . . . . Guard  
Height 5:08, Sophomore, Banks.
- BILL FLYNT . . . . . Forward  
Height 5:10, Freshman, Beebe.
- LEO LEWIS . . . . . Center  
Height 6:2, Freshman, Lewisville.
- EMORY DEESE . . . . . Guard  
Height 6:00, Freshman, Beebe.
- CECIL KEMP . . . . . Forward  
Height 6:01, Sophomore, Warren.
- DON BURTON . . . . . Guard  
Height 5:09, Freshman, Cleburne, Tex.



STUDENT MANAGER J. W. JONES







*Johnny adds to Tech's woe*

## *BASKETBALL ALL-STATE*

JOHNNY FURQUERON—Johnny was not only captain of his team for the second season but was chosen by the tournament officials as All-State guard for the second straight year. It is his smooth floor work on the offense, coupled with his ability to keep an air-tight defense without fouling that has won for him this honor. Johnny still has another year with the Tigers.

LOUIS GENE NICHOLS—"Deno" has made a name for himself in winning All-State honors twice in the same number of years of varsity basketball. His keen eye for the basket, his two-handed jump-shot that is almost impossible to guard, and his unexcelled sportsmanship have made him an ideal player for any coach, official or fan. "Deno" will also be with the Tigers again next year.



*Deno heads the ball for the hoop*

## *Resume of the Season*

Although the regular season didn't officially begin until January, the Tigers played several pre-season games before the Christmas holidays. After winning four games from independent teams of the state, Coach Bradshaw took the boys into Texas to get experience of playing some of the best teams in the nation. They improved with each game and ended the trip with a surprise win over Sam Houston University.

The schedule for the season included four games each with the other conference teams, Henderson, Tech, and Teachers, and two games each with Hendrix and the Worthen Bankers. The conference championship would be decided on the basis of the best percentage of games won, and the A. A. U. title would be settled in a tournament, and since Ouachita was defending champion in both, all of the Tigers' opponents were looking for revenge.

The Bengals took their first six college games in a walk, with Henderson, Hendrix, and Tech all falling victims in two games with the defending champs.



*Sterling's southpaw shot surprises the Bears*

The first crisis of the campaign was the two-game series with State Teachers in the Ouachita gym, and the Tigers took the first game by a 53-to-33 margin without stretching, but the amazing Bears came back in the dizzy second game to win in the last few second by a score of 46 to 45. It was a heart-breaker for the boys, but there were two more games yet to be played with the Bears, so they lost no time in winning over Tech two more times, and once over Worthen.

With the discouraging prospect of having to play the Reddies on Tuesday, and the Teachers on Wednesday and Thursday, the Tigers dropped a close decision to Henderson, 40 to 43, and to top it all, lost both games of the series with State Teachers, with Alvin Williams, starting center, spraining his wrist. This gave the Bears the Conference title. To make the losing streak complete, the Tigers dropped one to Worthen and another close one to the Reddies. In the State A. A. U. tournament Ouachita hit the comeback trail, losing only in the finals to the Bears. Since State Teachers chose to go to the National Col-





*Furqueron gets one away untouched*

lege tournament, Ouachita was eligible to enter the National A. A. U. tournament at Denver as Arkansas' representative.

In the Denver tourney the Tigers were written up by the Western newspapers as "the plucky little team from a tiny college in Arkadelphia, Arkansas," and were headlined as the "spoilers of the tournament." All of this was because of the fact that Bradshaw's Bengals, not given a chance to win one game from the field of 48 teams, put out the Rocky Mountain Conference champions, Greely State, in the first round and defeated the highly favored Faultless Laundry team of Kansas City in the second round. The Tigers became the first team in Arkansas history to win two games in the National tournament and were the only college team of the nation left in the third round. This record was made with only five men, since the only substitute, Freshman Bill Flynt, played all of the last two games in place of Orville Roberts, who sprained an ankle early in the first game. No cups were won by the team this year, but the Tigers certainly had a spectacular season and a commendable record.



*What goes up must come down and the Tigers are ready*

## Scores of All Games

Ouachita 40	Kroger .....	22	Ouachita 56	Arkansas Tech .....	36
Ouachita 41	Worthen Bankers .....	21	Ouachita 79	Arkansas Tech .....	22
Ouachita 42	Camp Robinson .....	40	Ouachita 40	Henderson .....	43
Ouachita 53	Lewisville Independents	30	Ouachita 38	State Teachers .....	48
Ouachita 29	East Texas Teachers .....	43	Ouachita 34	State Teachers .....	52
Ouachita 37	Texas Wesleyans .....	47	Ouachita 30	Worthen Bankers .....	31
Ouachita 39	Howard Payne .....	47	Ouachita 50	Henderson .....	56
Ouachita 41	Sam Houston .....	38			
Ouachita 44	Hendrix .....	32	STATE A. A. U. TOURNAMENT		
Ouachita 65	Henderson .....	30	Ouachita 69	Base Hospital .....	37
Ouachita 78	Hope All-Stars .....	20	Ouachita 53	Arkansas Tech .....	30
Ouachita 54	Hendrix .....	34	Ouachita 44	Arkansas College .....	42
Ouachita 45	Arkansas Tech .....	35	Ouachita 30	State Teachers .....	34
Ouachita 40	Arkansas Tech .....	23	NATIONAL A. A. U. TOURNAMENT		
Ouachita 47	Henderson .....	43	Ouachita 48	Greely, Colorado State	43
Ouachita 53	State Teachers .....	33	Ouachita 48	Faultless Laundry, K.C.	42
Ouachita 45	State Teachers .....	46	Ouachita 37	Los Angeles Cliftons .....	67
Ouachita 42	Worthen Bankers .....	39			



## Ouachita College A.A.U. Meet 'Spoilers'



### Kansas City Five Dumped In Big Upset

#### Ouachita Wins

A team of iron men from Ouachita College, Arkadelphia, Ark., spilt the dope all over City Auditorium boards when it outshot the heavily-favored Faultless Laundry of Kansas City, to win, 44 to 42 in a game that had the afternoon crowd cheering loudly.

Given absolutely no chance against the Laundry quintet, which holds a decision over Denver Legion, the Arkansians forgot the reputation of the opposition and went out to score a popular triumph.

They pulled up, late in the first half, to take a lead, but at the intermission the score was deadlocked at 26 and 26. The game saw the first 10 minutes of the final stanza before the winners surged ahead and played smartly to maintain the lead.

Faultless outscored the surprising collegians from the floor, but committed too many fouls, which won for Ouachita, Freshman Flynt, who was starting his first game of the season, hit 10 points, to Bond and Self were best for Faultless.

Ouachita (44)		Faultless (42)	
Player	G. P. P.	Player	G. P. P.
Flynt	10	Roswell	10
Nichols	8	Self	8
A. Williams	7	Cody	6
Winters	2	McLean	2
S. Williams	0	Wright	0
		Michael	0
		Tracy	0
		Bond	0



### Underdog College Team Scores AAU Tourney Win

By CHESTER NELSON  
Rocky Mountain News Sports Editor

From tiny Ouachita College of Arkansas came a dauntless unit of "iron men" to play the role of "spoilers" in yesterday's second round game in the National AAU basketball tournament at City Auditorium.

The Arkansas delegation, a 20-point underdog and accorded no chance at the first throw, came through with an accurate shooting attack to out the feared Faultless Laundry troop of Kansas City and move into the third round. The score was 44 to 42, and much closer than that, for the most part.

The game featured another high scoring session which also saw three of the eight seeded teams make successful bows in the tournament.



1. Johnny on a snowscape.
2. Tigers invade New Mexico.
3. "Wild Bill" Flynt and "Buffalo Bill" Cody.
4. Sitting on top of the world.
5. Denver, here we come.
6. The giant-killers leave Denver in a snowstorm.





# R. O. T. C.

LT. COL. DONALD HENLEY, Infantry . . . U. S. A. Commandant  
Professor Military Science and Tactics

LT. COL. HARRY J. FARNER, Infantry . . . U. S. A. Commandant  
Professor Military Science and Tactics

CAPT. JOHN MAURER, Infantry . . . U. S. A.  
Assistant Professor Military Science and Tactics

## SPONSORS

- MISS MILDRED SKINNER . . . . . Battalion
- MISS KATIE JEAN MCGRAW . . . . . Company A
- MISS JIMMIE LEE STEWART . . . . . Company B
- MISS PATRICIA PAYNTER . . . . . Company C
- MISS LOUISE BURNS . . . . . Band



Sgt. Herman F. Byram  
Infantry  
D. E. M. L., U. S. A.  
Assistant Instructor in  
Military Department  
R. O. T. C.





# BATTALION

## CADET OFFICERS

MAJOR JACK MCHANEY . . . . . *Battalion Commander*

CAPTAIN WILLIAM VESTAL . . . . . *Adjutant*

FIRST LIEUTENANT PAUL BOWLIN . . . . . *Marksmanship Officer*

CAPTAIN BILLY GILL EAST . . . . . *Plans and Training Officer*

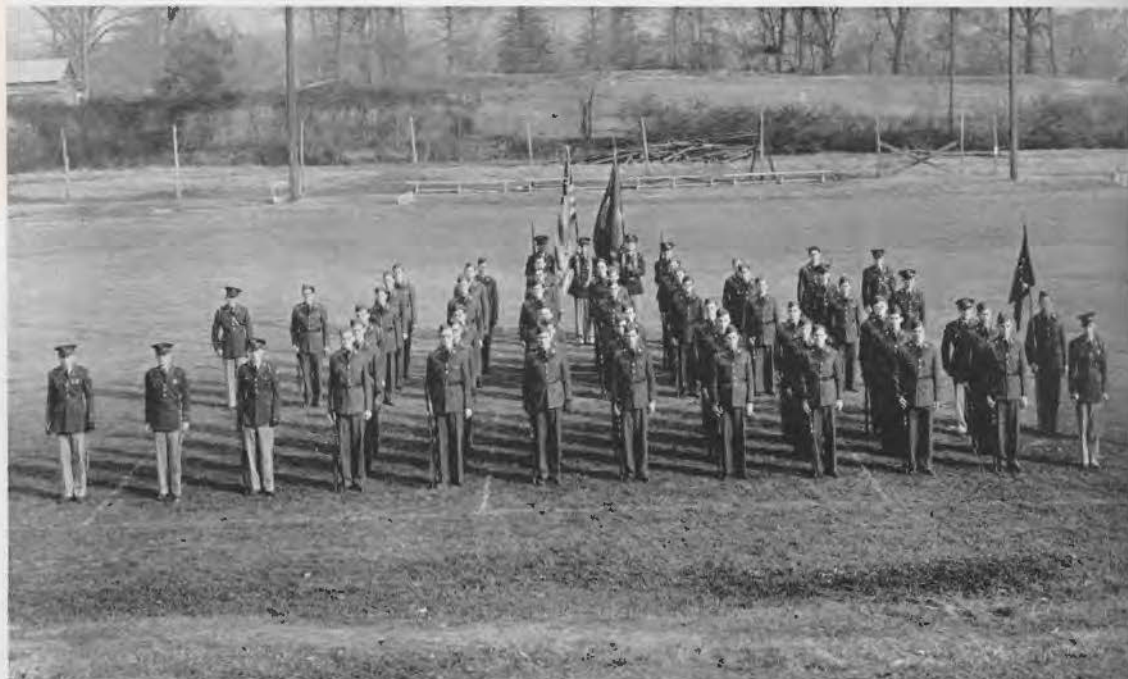




# COMPANY A

## CADET OFFICERS

- CAPTAIN JOHNNY MOWREY . . . . . *Company Commander*  
 FIRST LIEUTENANT JAMES BRIDGES . . . . . *Commander First Platoon*  
 SECOND LIEUTENANT TRACY BARRETT . . . . . *Second-in-Command*  
 FIRST LIEUTENANT EARL HUMBLE . . . . . *Commander Second Platoon*  
 FIRST LIEUTENANT HOLLAND BROWN . . . . . *Second-in-Command*



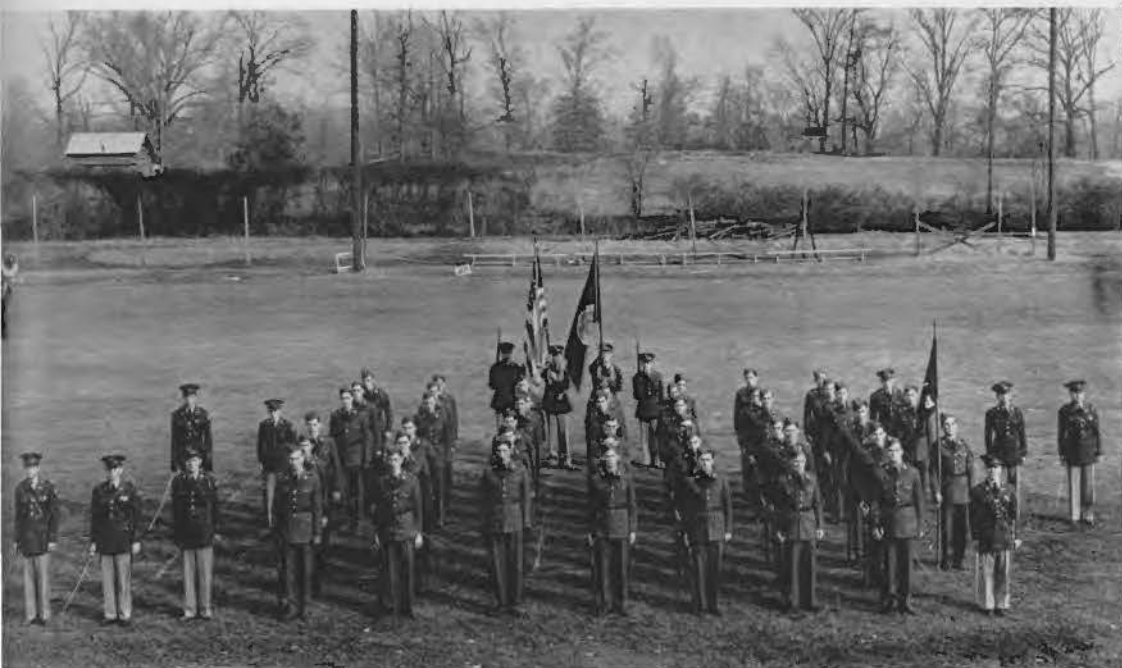




# COMPANY B

## CADET OFFICERS

- CAPTAIN PRINTISS PARK . . . . . *Company Commander*  
FIRST LIEUTENANT HAROLD BALDWIN . . . . . *Commander Second Platoon*  
FIRST LIEUTENANT WILLIAM ABBOTT . . . . . *Second in Command*  
FIRST LIEUTENANT CLARENCE S. WHITE . . . . . *Commander Second Platoon*





# BAND

## CADET OFFICERS

CAPTAIN MARTIN BURNS . . . . . *Company Commander*

SECOND LIEUTENANT JACK CHITWOOD . . . . . *Second in Command*

MASTER SERGEANT JIMMIE BEALS . . . . . *Drum Major*

SECOND LIEUTENANT STANLEY WILLIAMSON . . . . . *Platoon Leader*





1. Lt. Second Platoon, Co. B. 2. Pistol Packing Poppas. 3. The annuals finally arrived. 4. The post commander. 5. "Boy what's this army coming to?" 6. Ft. Leavenworth's bathtub. 7. Barrett is much better looking this way. 8. "Bull's Eye" Humble shows 'em how. 9. First aid for flat feet. 10. Annie Oakley in long pants. 11. Jap poison. 12. Who said the army was mechan-

ized? 13. Very effective against rabbits. 14. Suction. 15. Sweat, blood, and tears. 16. Sipping lemonade in the shade. 17. Favorite maneuver. 18. They were all out of step except Vestal. 19. Billy Gill Weismuller, Jack Mac Weismuller, and Booney Weismuller. 20. "I don't care if cabbage don't head. . . ."





1. Sara smiles sweetly.
2. (This is subtle) A group of students seated around a table in chairs eating popcorn
3. Wendell won his wings.
4. At the Trylon and Perisphere.
5. Kreml should pay us for this one.
6. Tough, but Oh, so gentle.
7. Bridesmaid Halsell.
8. Coordinating the Freshmen.
9. A hero and his heroine.
10. Personification of Jack's dream.
11. Breath of Spring.
12. Contact!
13. Aces all.
14. Got 'em spotted.
15. B. S., M. S., Ph. D.
16. Ouachita intelligensia.

1. Life service band.



2. Captions censored.



3. At the end of their rope.



4. Kute Kewpies.

5. Tennis courting.



6. Victual vigilance.

7. One of those girls has quit school, hasn't she?

8. Glamorous Gill.



9. Everybody show up but the photographer.



10. Tracy traces terrain.

11. And it comes out here!



12. Griever at attention.

13. An annual affair.

14. Webb, Ward, women, etc.



15. Watch the Fords go by.

16. Mrs. Gunn's understudy.





1.



2.



5.



6.



7.



8.



10.



11.



11.



13.



14.

1. Conway invaded.
2. Swinging out on "The Gray Mare."
3. "Yep, I've developed a pretty good team this year."
4. Lull before the storm.
5. King and Queen Humble.
6. Trophy from Teachers.
7. Barrett got the check.
8. Rough date.
9. Little Rock stop.
10. Comparatively speaking. Frank Buck's a sissy.
11. "All right gang, what are we going to do about it?"
12. The Halsell Family.
13. Getting ready for Reddie meat.
14. Some of the boys that did it.



1. Basketball hero and ladies' man.



2. Someone's rocking my dreamboat.



3. Burnsie reflects.



4. Fortunately, the army builds men.



5. Chopsticks.

6. Foreign correspondent.



7. Great Gault!

8. Beauty rests.

9. Lucky dog.

10. We came to college to me went with.



11. Why Hitler wins battles.



12. Doormats.

13. As Pearl Harbor was bombed.

14. Ain't two enough?



15. Bit, Shot, or Stung?

16. What the well-dressed gentlemen wear.



1. Third degree to "Black Wings."  
2. Aw, Shucks!



3. What's the gun for?  
4. Standing room only.



5. Propaganda for teachers.  
6. Col. Farners private army.



7. Couple of Co-Eds.  
8. Some form!  
9. Twirling Der-vishes.



10. "Deaux beaux filles."



11. Poop-deck Pop-py and? ?  
12. History in the making.  
13. A warped sense of values.



14. Mirth unlimited.  
15. Larynx work.  
16. Gene Autry's call.



1. They really do  
crave food.



2. Need we say  
more?



3. Abernathy got  
sucked into the  
classen flask.



4. Vocalized spir-  
ituality.



5. Beetle's harem.



6. This one melted  
the camera.



7. Day of dedica-  
tion.



8. The plot  
thickens.



9. A motorcycle  
came between  
them (but not  
for long).



10. Simple  
reminders.



11. Ted only writes  
once a day—  
the heel!



12. Farewell to  
Margaret.

13. Pass in review.



14. They're still  
laughing at the  
joke Dr. Daily  
told.



15. "Pause that re-  
flects."







1. Foundation for the Red Shirt walk.
2. "I'm glad to meetcha."
3. He didn't hit him.—Honestly he didn't.



4. and 5. Destination—unknown.
6. Don't let that big one of Baldwin's fool you.
7. Not a brain cell was stirring.



8. Wayne at the Mike.
9. That's the B. S. U. party.
10. A merry time was had by all.



11. "Here's now."
12. Lucius Beebe or Dr. Grant?
13. Weeping and wailing and gnashing of teeth.



14. This is what exercise does for you.
15. I couldn't get an idea for this one.



16. Sand hogs.
17. Oh, goody, my chapel seat's on the front row. chapel seat's on the front row.

1. Jacob's ladder.



2. "Everybody's got a game but me.



3. Mona Lisa in a striped shirt.



4. G'by, Phoebe.



5. Freshman hits Senior—that's news.



6. No wonder they gain weight!



7. Whither away?



8. A group of students at the Student Center, no doubt.



9. Tiger Fan No. 1.



10. Tech was tested and found wanting.



11. "Have you heard that one about the two old maids?"



12. To caption or not to caption—that is the caption.



13. Still hunting a game.



14. Tennessee's pride, Sgt. York, and Dean Witherington.







1. Skippy fixing her panther eyes.



2. Student Center in the making.

3. Pro Jones' pride and joy.

4. Boys turned out to hear Arde Delphia's "Ink Spots."

5. Red Shirts' contribution to Ouachita.

6. "Doc" and Mrs. J. J. Webb in Sunday attire.



7. Looks better to say the least.

8. Some males have all the luck.

9. "My friends!!!"



10. Professional Actors on Ouachita's campus.

11. Strutting our stuff.



12. Clark County Fair.

14. Tiger backers.

15. "Mamma!"

16. "Blues In the Night."



17. Registration comes but twice a year... thank goodness.

18. Pro, you want it, and I'll tell you what to feed it.

19. Of course we gotta have a chapel seat.



20. Figuring schedules without Saturday classes.

Ouachita College	19	41	24
MEMBERS	193-32	281	
1933-35	281		
1935-36	436		
1936-37	562		
1937-38	648		
1938-39	562		
1939-40	562		
1940-41	636		





**ARKADELPHIA MILLING COMPANY**  
**Arkadelphia, Arkansas**

The Staff of the 1942 Ouachitonian  
wish to express here our sincere appre-  
ciation to our advertisers.

J. D. FOSTER, Editor.

WALTER MIZELL, Business Mgr.

Compliments of

**Mrs. Ocie Lile Harrison**

**Public Stenographer**

and Notary Public

McGEHEE HOTEL LOBBY

Main and Markham, Little Rock, Ark.  
Telephone 5141—Res. 3-5227

**Equitable Life of New York**

Life Assurance and Annuities

**Larkin M. Wilson**

Agency Manager

210 BOYLE BUILDING

LITTLE ROCK, ARKANSAS

FEEL AT HOME IN

**OUACHITA BOOK STORE**

School Supplies

New and Used Textbooks—Stationery

Schaeffer Pens and Pencils

When You Have That Empty Feeling Come In For

COLD DRINKS    ::    CANDY    ::    HOME-MADE SANDWICHES

PHONE 142

E. L. BREWSTER, Manager

**The Arkansas Baptist**

Official State Paper

REPRESENTING 153,000 BAPTISTS

Ouachita Student-Pastors, place the paper in your church budgets at 10c per month per member, pay monthly.

Lewis A. Myers, Editor-Manager

LITTLE ROCK - - - ARKANSAS

Compliments of

**E. L. COMPERE**

Brigadier General

State Director of Selective Service

LITTLE ROCK, ARKANSAS

Compliments of

**J. H. LOOKADOO**

ARKADELPHIA, ARK.

Compliments of

**ROY F. GOLDEN**

**Dentist**

ARKADELPHIA, ARKANSAS

**IT PAYS—**

\$100 per month when you are sick.

\$100 per month when you are hurt.

\$5,000 when you lose your eyesight.

\$5,000 when you lose two limbs..

\$2,500 when you lose one limb.

\$5,000 when you die.

\$10,000 when you are killed.

A Liberal Pension when You Are Old.

*The Only Complete Protection Policy  
On the Market.*

*Information Furnished On Request*

**C. L. Durrett, General Agt.**

PACIFIC MUTUAL  
LIFE INSURANCE COMPANY

Phone 4-5018; L. D. 176

715 Rector Bldg.

LITTLE ROCK, ARKANSAS

**NICHOLS**

**Where Good Things to Eat  
Are Original**

**And Our Personal Service  
Individual**

10 YEARS OF SERVICE CATERING TO  
COLLEGE STUDENTS

ACROSS FROM HIGH SCHOOL  
ON 11th STREET

WE DELIVER

PHONE 129

**WILLIAMS & PHILLIPS**

PHONE 38

**The Home of Good Foods**

WE DELIVER

ARKADELPHIA, ARKANSAS

**COCHRAN LUMBER CO.**

**Bradley, Ark.**



## CALENDAR

Sept. 7 Students first begin to arrive on the campus. Over 200 freshmen embark on college career.

Sept. 8—Freshmen get first instructions and visit points of interest on the campus. B. S. U. gives social for Frosh in front of Cone-Bottoms.

Sept. 9- Freshmen registration and comprehensives. Arrival of upper-classmen.

Sept. 10- Upperclassmen register. First Freshman meeting.

Sept. 11 All classes begin as scheduled. Traditional social for Frosh at the church.

Sept. 12 We all meet the faculty in front of Cone-Bottoms.

Sept. 13—S. A. S. rush party at Vestal home.

Sept. 14- Freshmen attend church in group—accompanied by Seniors.

Sept. 15 Y. W. A. candle service and installation of officers.

Sept. 16—First pep meeting of season, with new leader Bill Abernathy.

Sept. 17—Frosh have costumes and "blackouts." They also have abandoned the walks.

Sept. 18—Another pep meeting. David Moore defeats Lawson Jacks in Junior class politics.

Sept. 19 Freshmen have a clean-up campaign. At least they have towels and tooth brushes. .

Sept. 20—First demerit list in Gals' Dorm. Corn heads the list.

Sept. 21—After two strenuous weeks of college life, we all go home for a week.

Sept. 22 Chicago group gives Lyceum number at Little Theatre. More freshmen meetings.

Sept. 23—BEAT HENDERSON! General theme of the day. Biggest pep meeting of the season. Trek to town.

Sept. 24 First edition of Signal.

Sept. 25—O. B. C. Red Letter Day. We defeat the Reddies.

Sept. 26 Chaos in Cone-Bottoms as men serenade gals. Freshmen meeting. Result: Round meals, new hair styles and same dresses for a week new orders to girls.

Sept. 27—Hash, dates, and joint freshman meeting.

Sept. 28 Church, chicken and kooking.

Sept. 29—Freshman initiation wears on. At any rate the dresses the girls are wearing. .

Sept. 30—S. A. S. and Red Shirts issue bids.

Oct. 1 -Pep meeting in the gym. Dress night.

Oct. 2—Football boys leave for Pensacola. New stooges installed in Cone-Bottoms Hall according to complaints made by Gann and few others.

Oct. 3 Ministerial Association met at Gardner's.

Oct. 4—We have word that our boys lost at Pensacola.

Oct. 5 —One student has just now gotten used to this food rationing business.

Oct. 6—Blue Monday.

Oct. 7—Pep meeting, freshman meeting, and chapel.

DRINK

*Coca-Cola*

IN BOTTLES

COCA-COLA BOTTLING COMPANY  
of Southwest Arkansas

Compliments of

**GARRETT HOTEL**

**El Dorado, Arkansas**

**J. C. PENNY**

WHERE SAVINGS

ARE

GREATEST

TO THE CLASS OF 1942

CONGRATULATIONS AND BEST WISHES FOR

YOUR FUTURE SUCCESS

It has been a pleasure to serve you

**FAUSETT'S STUDIO**

108 Main Street

Little Rock, Arkansas

**THE CADDO HOTEL  
AND COFFE SHOP**

---

The Hospitality House

---

**When In Arkadelphia Visit  
an Old Friend**

---

**Mrs. R. C. Cunningham,**  
Proprietress

**LOGAN GROCER CO.**  
Wholesale Grocers

---

**Prescott and Arkadelphia  
Arkansas**

---

**Blue and Gold Spiral  
School Supplies**

**STUDENT CLEANERS**

**PROMPT—EFFICIENT—ACCOMMODATING**

**On the Ouchita Campus**

---

**FRIENDLY, CAREFUL SERVICE**

---

**Mr. and Mrs. E. W. Lloyd**



# CALENDAR

Oct. 8—Traditional "local" for freshman girls.

Oct. 9—Special goes to Conway. The Tiger triumphs, 19-0. Does everyone remember and appreciate those gas lights going out on the way back.

Oct. 10—Red Shirts hay ride.

Oct. 12—Sunday—campus rests after hectic week.

Oct. 13—At early dawn the club bids were issued.

Oct. 14—Dress, dates, and demerits.

Oct. 15—Work resumed on New Music Conservatory.

Oct. 16—Club initiation going full force.

Oct. 17—Flenniken Hall (Student Center to you) dedicated.

Oct. 18—B. S. U. convention. Guests galore.

Oct. 19—S. A. S. goes to church in group.

Oct. 20—Well, at least we had Y. W. A. to go to.

Oct. 21—Pep meeting again.

Oct. 22—Everyone leaves to attend opera at Little Rock.

Oct. 24—Open house at Student Center. Debate team holds outing.

Oct. 25—Our football team defeated at Commerce, Texas, but that does not matter, anyway.

Oct. 27—Dr. Justin, A. A. O. W., speaks in special chapel.

Oct. 28—Pep meeting around Tiger and Pro with his fireworks.

Oct. 29—We are giving boys plenty of pep lately.

Oct. 31—Special leaves for Russellville for Tech game. Tiger triumphs, 7 to 0.

Nov. 1—Kewpie party at Tavern.

Nov. 2—Church again.

Nov. 3—That picture man is here again; smile pretty now.

Nov. 4—Nine weeks test begins. Red Shirts end initiation at gymnasium.

Nov. 6—Another Lyceum number at the Little Theatre.

Nov. 7—Tigers defeat Bears again, 14 to 0.

Nov. 8—Uncle Sam gets another nephew, in Mr. Lynn, our student secretary.

Nov. 10—E. E. E. ends initiation with formal rituals in prayer room.

Nov. 19—The leaves of brown came came falling down and the girls all went hiking.

Nov. 21—Tiger champs! Ouachita Tigers triumph over Tech, 36-0, making all-state championship.

Nov. 27—Homecoming. Turkeys and Tech suffer.

Nov. 28—Campus vacated.

Nov. 30—Back to school.

Dec. 2—First basketball game. Ouachita wins over Henderson.

Dec. 3—Campus back to normal after holidays.

Dec. 5—Kewpie party at Mrs. Ross' home.

Compliments of

**BRADLEY LUMBER CO.  
OF ARKANSAS**

**FEED . . . . .**

Custom  
Grinding

**. . . . . MEAL**

**J. LEE PORTER CO.**

South Sixth and Spring Sts.

Arkadelphia, Ark.

**MERCHANTS &  
PLANTERS BANK &  
TRUST CO.**

—  
The Bank of  
Friendly Service

—  
Member: F. D. I. C.

—  
Arkadelphia, Arkansas

## Financial Statement of the 1942 Ouachitonian

The following statement is published to comply with the National Tariff Act. (Not subject to Income Tax.):

DEBITS	CREDITS
Photography ----- \$ 48.00	Sale of Annuals ----- \$2,000.00
Engraving ----- 29.20	Sale of Advertising ----- .75
Printing ----- 17.50	Organization Pages ----- 600.00
Editor's Camera ----- 3.33	Donations ----- 100.00
Film ----- 2.24	R. O. T. C. Checks ----- 75.00
Editor's trips to El Dorado 14.20	Miscellaneous ----- 500.00
Picture Shows ----- 3.01	
Esquire Magazine ----- 5.53	
Etchings ----- 1.81	
Trip to Hot Spring in Mar. 17.90	
Aspirins ----- 8.70	
Miscellaneous ----- .13	
TOTAL ----- \$ 151.55	TOTAL ----- \$3,275.75

Surplus Credits dissolved by "Swindle Sheet."

(Any resemblance between the Debit figures and Arkadelphia telephone numbers is purely coincidental.)

## SIGNAL FAMILY TREE

Year	Editors	Business Managers
1929-1930	J. B. WILSON	EVANDER L. MOSLEY
1930-1931	JAMES O. ESKRIDGE	WITHROW T. HOLLAND
1931-1932	BEN HAYNES	HARRY HIPPI
1932-1933	J. TRAVIS BOWDEN, Jr.	J. D. COBB
1933-1934	THOMAS HAGINS	JAMES LANDES
1934-1935	WILFORD LEE	LAWSON GLOVER
1935-1936	E. M. SLEEKER	CHARLES B. HAGINS
1936-1937	ROSMARY REED	CHARLES B. HAGINS
1938-1939	NELSON EUBANKS	HERMAN HANKINS
1939-1940	LOWELL GIBBS	HERMAN HANKINS
1940-1941	ORVILLE TAYLOR	MOISE SELIGMAN
1941-1941	RALDON WILES	BILL ABERNATHY



Compliments of

**RANDOLPH HOTEL**

**El Dorado, Ark.**

Compliments of

**FLOWERLAND**

# **THE CADDO CLEANERS**

A FRIEND OF OUACHITA

---

MODERN EQUIPMENT

**Phone 323**

---

**509 Clinton Street**

**Arkadelphia, Arkansas**

**One-Day Service**

Compliments of

**NOWLIN  
FURNITURE CO.**

BILL AND BOOTS, Owners.

ARKADELPHIA, - - - ARKANSAS

MEET YOUR FRIENDS AT

**LIDO CAFETERIA**

Walter Orthout

Oliver Harper

615 MAIN STREET

LITTLE ROCK,

ARKANSAS

Compliments of

**CUPP THEATRES**

INCORPORATED

---

**ROYAL AND CO-ED**

**THEATRES**

---

Robin Wightman, Manager

ARKADELPHIA, ARK.

**CARTER'S  
MEN'S STORE**

---

The Most Complete Line in  
Arkadelphia

---

**Nick Carter, Proprietor**

Phone 20

---

ARKADELPHIA, ARKANSAS

**THE ELK HORN BANK & TRUST COMPANY**

**Arkadelphia, Arkansas**

**1884—1942**

---

**A FRIEND OF OUACHITA**

---

**Your Account Is Appreciated at This Bank**

---

Member F. D. I. C. and Federal Reserve System

Compliments of

**CUPP THEATRES**

INCORPORATED

---

**ROYAL AND CO-ED  
THEATRES**

---

Robin Wightman, Manager

ARKADELPHIA, ARK.

**CARTER'S**

**MEN'S STORE**

---

The Most Complete Line in  
Arkadelphia

---

**Nick Carter, Proprietor**

Phone 20

---

ARKADELPHIA, ARKANSAS

**THE ELK HORN BANK & TRUST COMPANY**

**Arkadelphia, Arkansas**

**1884—1942**

---

**A FRIEND OF OUACHITA**

---

**Your Account Is Appreciated at This Bank**

---

Member F. D. I. C. and Federal Reserve System



**SCOTT-MAYER COMMISSION COMPANY**

LITTLE ROCK, ARKANSAS

---

Wholesale Dealers in  
**FOREIGN AND DOMESTIC FRUITS  
PRODUCE AND GROCERIES**

---

Distributors of  
**HART BRAND CANNED VEGETABLES  
PRATT-LOW CANNED FRUIT**

---

**WE SEARCH THE MARKETS OF THE WORLD  
FOR GOOD THINGS TO EAT**

Compliments of

**ROBB AND ROWLEY  
THEATRES**

**Little Rock, Arkansas**

---

CAPITOL  
PULASKI  
ROYAL  
PROSPECT  
ARKANSAS  
NEW  
ROXY  
LEE

Compliments of

**RICHIE GROCER CO**

Hope, Arkansas

---

**We Own and Operate Nine  
(9) Stores in Arkansas and  
Louisiana.**

# CALENDAR

Jan. 23—Oh, happy day! Tests are over.

Jan. 24—Spring can't be here, but spring weather is.

Jan. 25—Back in the groove again after tests.

Jan. 26—New Leaf: Resolved to study all semester; not cram.

Jan. 27—Ouachita defeats Hendrix 54-29.

Jan. 28—Brand new courses—even Dean Witherington's course.

Jan. 29—Physical Ed chapel program.

Jan. 30—Let's get our heads together—so I can walk under your umbrella. It's another rainy day.

Jan. 31—Choir leaves for midwest Arkansas tour.

Feb. 1—I was gone. How would I know what happened?

Feb. 2—Eleven new Red Shirt pledges this morning. S. A. S., too. Ouachita defeats Reddies in closest game of the season.

Feb. 3—Ah! Say, fellows—new moon!

Feb. 4—It's been raining all day. Signal's out.

Feb. 5—Seniors vs. Faculty—and those lovely girls. Ouachita beats State Teachers.

Feb. 7—State Teachers defeat O.B.C.

Feb. 8—Choir goes to Hot Springs vesper services for army men.

Feb. 9—Faculty defeats seniors. New time system.

Feb. 10—Mr. Fausett takes more pictures. Arkadelphia Little Symphony.

Feb. 11—More fun—class meetings at early dawn. Preparation for North Central inspection under way.

Feb. 13—North Central inspectors.

Feb. 13—Friday 13. Defeat Tech. Red Shirt party at Student Center.

Feb. 14—Ouachita defeats Tech, 73-21.

Feb. 15—Everyone pauses to enjoy Valentine's greetings received yesterday.

Feb. 16—Yeah, it's a rainy Monday.

Feb. 17—Henderson defeats O.B.C. by three points.

Feb. 18—Corridor meetings in Cone-Bottoms.

Feb. 19—Pro. Jones gives defense chapel program.

Feb. 20—State Teachers defeat us.

Feb. 21—Hey, Bonham! Uncle Sam's calling.

Feb. 23—It rained again this Monday.

Feb. 24—Student Center campaign well under way.

Feb. 25—We have interference from Uncle Sam.

Feb. 26—Ouachita loses, 50-56, to Henderson.

Mar. 5—High school debaters here.

Mar. 6—Red Shirt banquet at the Caddo. Continued next week in Dr. Grant's office.

Mar. 7—There's something about a marine.

Mar. 8—Typical remark of a Red Shirt pledge—censored.

Compliments of

## **SOUTHERN ICE CO.**

COOLERATOR REFRIGERATORS  
AND CRYSTAL CLEAR ICE

CALL 202

ARKADELPHIA, ARKANSAS

## **BANKHEAD SERVICE STATION**

**Chrysler and Plymouth**

PHONE 283

R. C. PENNINGTON, Manager

ARKADELPHIA, ARK.

## **TEMPLE COTTON OIL COMPANY**

Manufacturers of  
COTTON SEED PRODUCTS

QUALITY FERTILIZERS

*"Arkansas' Leading Enterprise"*

## **W. D. TOBEY**

Wholesale

**Flour and Feed**

PHONE 166

ARKADELPHIA, ARKANSAS

# **Krebs Bros. Supply Co.**

**COMPLETE EQUIPMENT FOR HOTELS, CAFES,  
CLUBS, AND HOSPITALS**

---

**413-15 West Fifth Avenue  
Little Rock, Arkansas**

---

Phone 6133—Long Distance 140  
Sunday and Night Phones: 9415 or 2-2901



## **N. & H. CAFE**

---

HIGHEST QUALITY FOODS

AT

LOWEST PRICES

---

**SEA FOODS  
SANDWICHES  
STEAKS**

---

**Arkadelphia, Arkansas**

## **SLOAN'S DRUG STORE**

**Our Fountain Service Is the  
Best In Town**

---

SAYLOR'S—WHITMAN'S  
CANDIES

---

PHONE 25

---

ARKADELPHIA, ARKANSAS

Compliments of

### **Baptist Book Store**

BOOKS, BIBLES, CHURCH SUPPLIES

Little Rock, Arkansas

Compliments of

### **Arkadelphia Steam Laundry**

ARKADELPHIA, ARKANSAS

## **SOUTHERN CREAMERIES**

Manufacturers of Made-Rite Ice Cream

---

Third and Pecan Streets

Texarkana, U. S. A.

**M-J CAP AND GOWN  
COMPANY**

---

Commencement Announcements

Class Rings, Class Pins,  
Medals and Trophies

Diplomas

---

PAUL MEERS, Manager

**16th and Gaines Streets  
Little Rock, Ark.**

Compliments of

**OZAN-GRAYSONIA  
LUMBER CO.**

Quality Material

Reasonable Prices

ARKADELPHIA, ARKANSAS

**McCLAIN'S GROCERY  
and Market**

THE VERY BEST FOODS

We Deliver

Phones 28 & 29

ARKADELPHIA, ARKANSAS

Compliments of

**A FRIEND**

Nickels, Dimes and Quarters Make  
Dollars

They Also Buy More at the

**STERLING'S**

5c, 10c, and 25c STORE

ARKADELPHIA, ARKANSAS

**BUY**

**WAR SAVINGS**

**STAMPS**

**AND BONDS**

*"Remember Pearl Harbor"*

## OUACHITONIAN FAMILY TREE

<i>Year—Editors</i>	<i>Business Managers</i>	<i>Year—Editors</i>	<i>Business Managers</i>
1907 J. E. Talbot	Rupert Blakely	1920 Edwin B. Walker	Ray Kelly
Ruby Hunt.	Henry Bennett	1921 Frank T. Edwards	Frank Cargile
1909 Mary Frances Rudolph	T. J. Weatherly	1922 Roy Phillips	Sam Dardenne
Hamilton Moses		1923 Floyd H. Goodman	Charles Elliott
1910 Beulah Wright		1924 Wayne McCauley	W. I. "Bill" Walton
Birket Williams		1925 Blake Smith	James Thomasson
1911 Louis Crow		1926 John H. Elliott	Earl Dawson
Louis Crow		1927 Joe F. Rushton	Relton McCarroll
1912 D. P. Muse	Charles Gardiner	1928 William C. Brasher	Ben F. Runyan
Helen Mae Stearns	W. C. Ware	1929 Charles L. Deevers	Harold McCarroll
1913 J. W. Ramsey	Dwight Crawford	1930 J. Raymond Baine	Cecil Suffield
Lilian Fortune	W. E. Huddleston	1931 Neill M. Sloan	W. I. Bell
1914 H. L. Muse	J. D. Lewis	1932 Shelby L. Gillette	Roy Golden, Jr.
Margaret Crawford	W. R. Brooksher	1933 (No Annual)	
1915 Clarence Hooper	Spencer Fox	1934 Aubrey C. Halsell	
Elizabeth Autrey	J. I. Cossey	1935 Wilford C. Harris	James E. Tull
1916 Sam Dudley	H. B. Reeves	1936 James C. Hobgood	William E. Mankin
Sally Lou Wilson	H. S. Hargis	1937 John Bradley	Marsh Whittington
1917 Keith Edwards	Carroll Hester	1938 Aalsey L. Holland	Paul H. Powers
Ruth Goodwin	Pauline Drake	1939 Cecil M. Sanders	Harvey E. Marsh
1918 John N. Holiman	Gill W. Gullledge	1940 Jeff Cone	T. O. Matlock
Ruth Turner	Fred Fuller	1941 Lowell Gibbs	Jack McHaney
1919 E. S. Mizell	W. H. Robins	1942 J. D. Foster	Walter Mizell
Edwin B. Walker	Harold Ward		

## CALENDAR

Mar. 10—Love in bloom among the jonquils and kodaks.

Mar. 11—Effect of the Military Ball have just worn off, according to certain girls.

Mar. 12—Denver, here we dribble.

Mar. 13—Spring fever.

Mar. 15—The wind blew—full skirts.

Mar. 16—Pledge no longer, but full-pledged Red Shirts.

Mar. 17—There is a rumor about social dancing being prohibited in Ouachita.

Mar. 18—Sentence is passed. Girls, you shouldn't have done it.

Mar. 19—Newest club on the campus. Bids issued solely to select campuses. First formal session under the oaks.

Mar. 20—Research papers create budding bookworms, all a little dusty between the ears (years).

Mar. 21—S. A. S. hayride.

Mar. 22—Focus week begins.

Mar. 24—"Big Girls," little girls and medium sized ones, too, hair in various stages of curl and listened to Dr. Blake Smith lecture on the timeworn topic of love, courtship and mostly marriage. Even a stray lab assistant listened.

Mar. 25—Fifteen girls say farewell to the rock pile, the striped suits and the Big House to take a deep gulp of non-campused air.

Mar. 26—We will end this with some timely news: We made North Central today! Signal extra comes out!



# *Lion Congratulates You*

## **THE LEADERS OF TOMORROW**

The youth of today has a great responsibility. College graduates represent, in a large measure, the trained leaders of tomorrow. Therefore, it becomes your task to face the future with confidence, courage and determination to do your job well.

Likewise, the Lion Oil Refining Company seeks to meet today's problems with adequate answers to the challenge of the future. Lion research laboratories devote their entire time to new developments to add to their 27 quality products now being produced from Arkansas crude Petroleum.

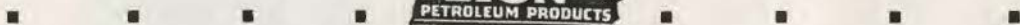
Working harmoniously together toward a common objective of developing this state, you, the leaders of tomorrow, can aid in creating a greater prosperity than has ever before achieved.

## **LION OIL REFINING COMPANY**

El Dorado, Arkansas



T. H. Barton, Pres.



# The *KEY* To A Successful Annual is the *EYEDEAS*

A striking school annual, like an imposing architectural structure, must be designed from the viewpoint of eye appeal. Theme, layout, typography, and illustrations must be chosen with expert knowledge as to which combinations secure the most distinctive effect. For the past twenty years, the Peerless Engraving Company has been specializing in *Eyedeas* for school annuals. From this great backlog of experience, Peerless brings expert counsel to each school staff interested in achieving books of quality, fitted to the budget.

**PEERLESS ENGRAVING COMPANY**  
LITTLE ROCK, ARKANSAS



This trade-mark is symbolic of striking *Eyedeas* . . . outstanding art work . . . and quality engravings of the Peerless Engraving Company.



FROM THE PRESS OF  
RUSSELLVILLE PRINTING COMPANY  
RUSSELLVILLE, ARKANSAS