

Ouachita Baptist University

Scholarly Commons @ Ouachita

OBU Yearbooks: The Ouachitonian

University Archives

1935

The Ouachitonian 1935

Ouachitonian Staff

Ouachita Baptist University

Follow this and additional works at: <https://scholarlycommons.obu.edu/yearbooks>



Part of the [Higher Education Commons](#), [Organizational Communication Commons](#), and the [Public Relations and Advertising Commons](#)

Recommended Citation

Ouachitonian Staff, "The Ouachitonian 1935" (1935). *OBU Yearbooks: The Ouachitonian*. 40.
<https://scholarlycommons.obu.edu/yearbooks/40>

This Book is brought to you for free and open access by the University Archives at Scholarly Commons @ Ouachita. It has been accepted for inclusion in OBU Yearbooks: The Ouachitonian by an authorized administrator of Scholarly Commons @ Ouachita. For more information, please contact mortensona@obu.edu.

Wilford M. Harris
Editor

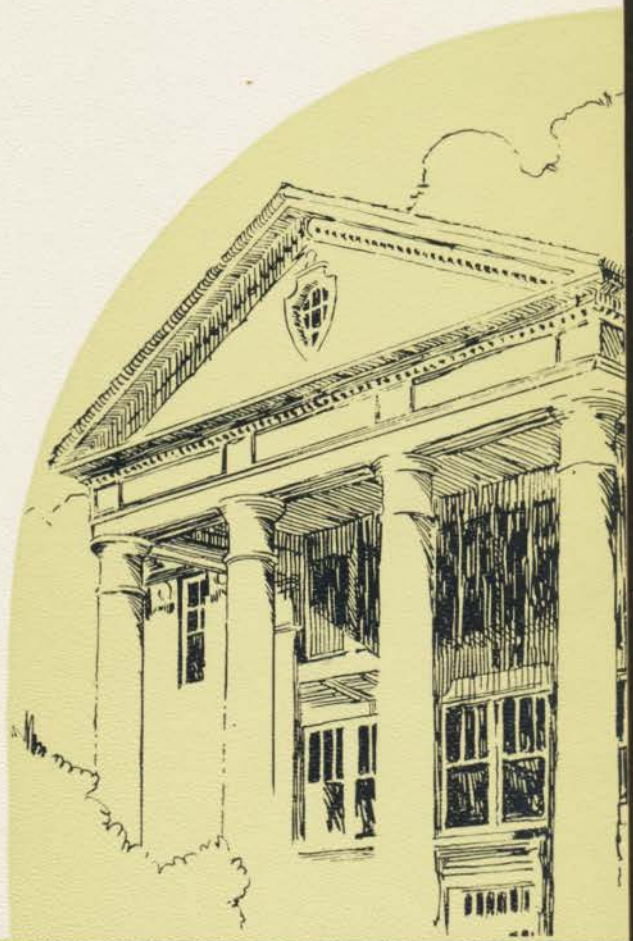
James E. Tull
Manager

PHOTOGRAPHY BY
LEROY THOMPSON
ARKADELPHIA, ARKANSAS

ENGRAVING BY
PEERLESS ENGRAVING COMPANY
LITTLE ROCK, ARKANSAS

PRINTING BY
RUSSELLVILLE PRINTING COMPANY
RUSSELLVILLE, ARKANSAS

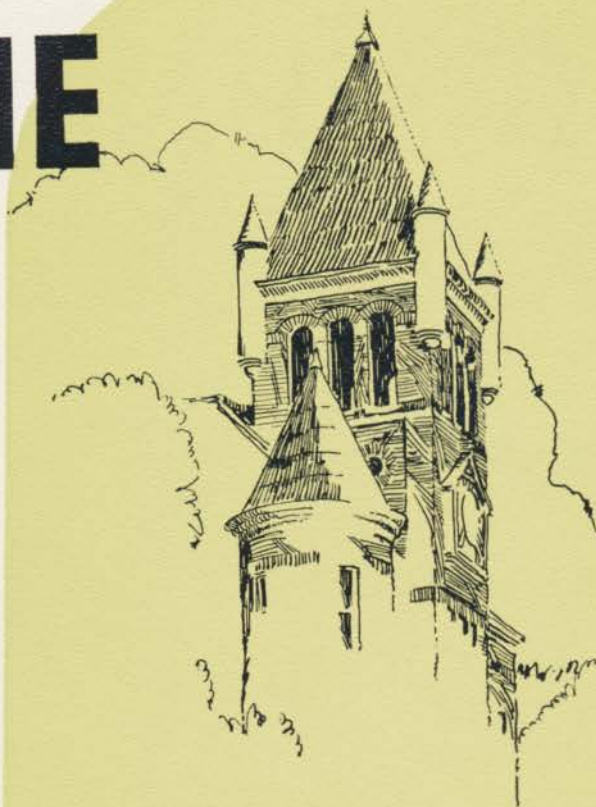
The
1935



OUACHITONIAN

THE

OUR



1 9 3 5

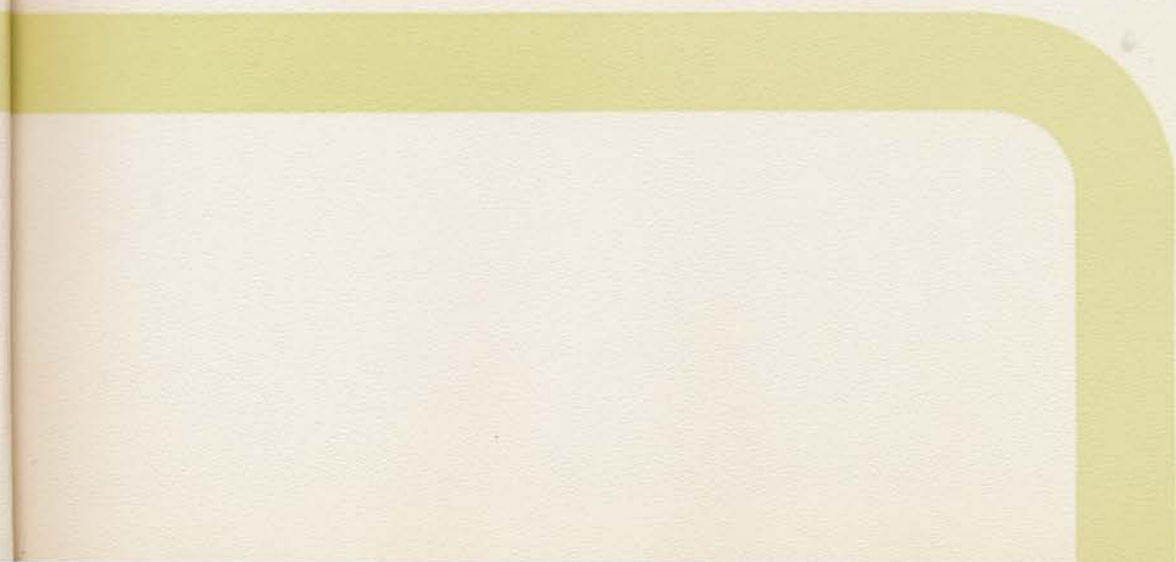
CHITONIAN

Published by the Student Body

of

OUACHITA COLLEGE

Arkadelphia, Arkansas



Dedication

To
C. E. ARNETT

In sincere appreciation of a loved friend and a respected Professor, whose long term of service to Ouachita comes to an end with the close of the 1934-'35 school year, we, the staff of 1935, do dedicate this volume of

The OUACHITONIAN



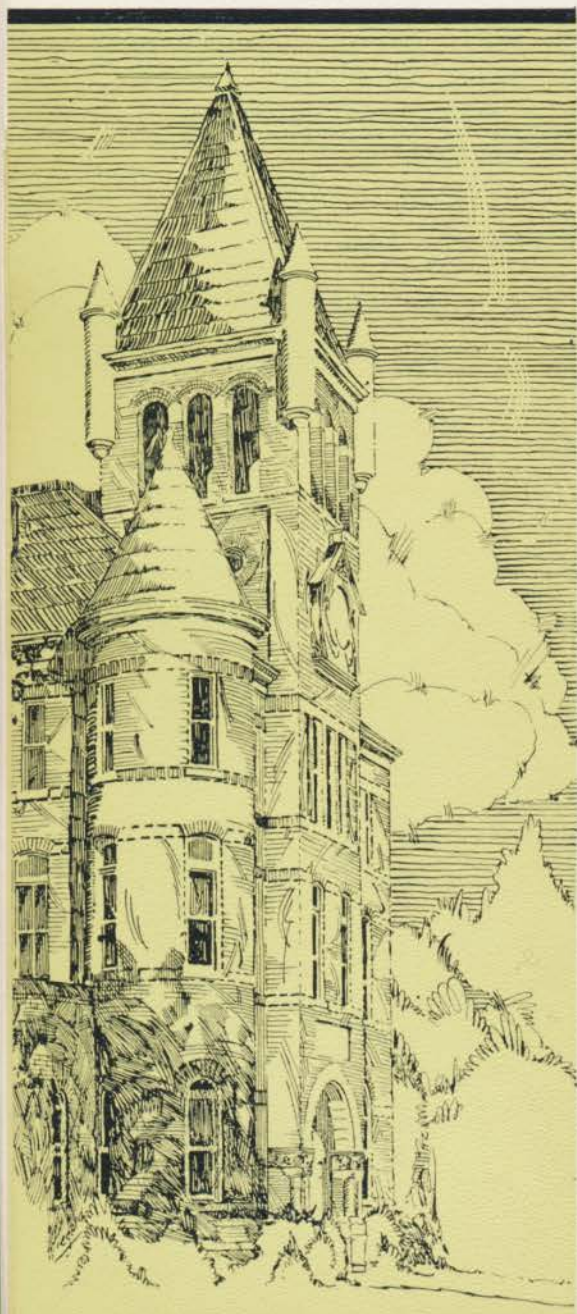
Foreword

With no hope of pleasing everyone completely, we, the staff, submit to the students of Ouachita this record of the 1934-'35 school year.

May it in some way preserve for you the Ouachita that you would want to remember.



Contents



ADMINISTRATION

CLASSES

ACTIVITIES

FEATURES

ATHLETICS

ADVERTISEMENTS



THE PRESIDENT SPEAKS

TO SUCCEED

1. Keep your bodies physically fit.
2. Choose associates that will tempt you upwards.
3. Live so as to keep a clear conscience and the confidence of others.
4. Study hard. Learn much. Knowledge commands respect.
5. Choose a life work with God as your partner—a work that you will enjoy to the end.
6. Work. It has no substitute.
7. Be satisfied with nothing short of your best.
8. Be big enough to see the other fellow's viewpoint.
9. Choose a life companion that will keep you at your best.
10. Believe in yourself, believe in others, believe in God.

—J. R. GRANT.



OUACHITONIAN



1. RIVER SCENE
2. OUACHITA
3. CITY PARK
4. FIRST BAPTIST
CHURCH.

2.

FACULTY

J. R. GRANT
PH. D.
President



O. W. YATES
TH. M.
Head of Department of Religious Education



WITHROW T. HOLLAND
B. A., TH. B.
Professor of Religious Education

PAUL CRANDAL
TH. B.
Assistant in Department of Religious Education

LIVINGSTON H. MITCHELL
Director of Conservatory
Professor of Piano



WILLIAM F. DEUSINGER
Professor of Stringed Instruments and Theory

FLORENCE F. EVANS
B. A., B. M.
Professor of Voice

ESSIE GRAVES
B. A., B. O., B. E.
Professor of Speech



E. J. FRANTZ
B. A.
Director of Band

KIRTLEY RUSSEL
Assistant in Department of Music



FACULTY

R. C. PETTIGREW

PH. D.

Head of Department of English



ESTELLE McMILLIAN BLAKE

M. A.

Professor of English



D. O. TODD

M. A.

Professor of English



C. E. ARNETT

M. A.

*Head of Department of History
and Social Science*



WHITFIELD CANNON

M. A.

*Professor of History and Social
Science*



WILLIAM NOWLIN

B. A.

Professor of Business Administration



E. A. PROVINI

M. A.

Head of Department of Chemistry



MAURICE VICK

M. A.

*Professor of Mathematics and
Chemistry*



CHARLES L. DEEVERS

M. A.

Professor of Biology



A. S. TURNER

B. A., B. C. E.

*Professor of Mathematics and
Physics*

FACULTY

C. M. PEGUES

PH. D.

Head of Department of Foreign Languages



MADGE WADE

M. A.

Professor of Foreign Languages

MAJOR LEWIS W. AMIS

*U. S. A., Commandant
Professor of Military Science
and Tactics*

CAPTAIN F. D. ROSS

U. S. A.

*Professor of Military Science
and Tactics*



FIRST SGT. JOHN MAURER

D. E. M. L., U. S. A.

*Assistant in Military Science
and Tactics*

PATRICIA IRBY GUNN

Head of Department of Home Economics

J. LEE PORTER

B. A.

Director of Ouachita Enlargement Campaign



CAREY GARDINER

Business Manager

FRANCES CRAWFORD

Secretary to President

E. L. BREWSTER

Manager Ouachita Book Store



FACULTY

A. F. WITHERINGTON
PH. D.

Head of Department of Education

B. F. CONDRAY
PH. M., LL. D.

Professor of Education

MRS. J. LEE PORTER
M. A.

Professor of Education and German

LaVERNE BELLE DEEVERS
B. A.
Librarian

BETH REMLEY
B. A.

Assistant Librarian

EMILY BLAKE
B. A.

Dean of Women

MRS. T. P. BLAKE
Matron of Girls' Dormitory

MRS. CHARLES PRICKETT
Matron of Boys' Dormitory

W. I. WALTON
B. A.

Director of Physical Education

CLARENCE BELL
B. A.

Assistant Director of Physical Education

To the memory of one who served Ouachita faithfully through her darkest and brightest years alike.



R. T. HARRELSON

CROSSING THE BAR

*"Sunset and evening star,
And one clear call for me!
And may there be no moaning of the bar,
When I put out to sea,*

*But such a tide as moving seems asleep,
Too full for sound and foam,
When that which drew out the boundless deep
Turns again home.*

*Twilight and evening bell,
And after that the dark!
And may there be no sadness of farewell,
When I embark:*

*For though from out our bourne of Time and Place
The flood may bear me far,
I hope to see my pilot face to face
When I have crossed the bar."*

—Tennyson

OUR CHITONIAN

SENIORS



BENNIE JOHNSON, B. S. *Arkadelphia*

President Senior Class; Little Symphony Orchestra '32, '33, '34; President Little Symphony '34; Ouachita Band '32, '33, '35; Business Manager Band '35; Student Director Band '35; First Lieutenant R. O. T. C. '35; Board of Publication '35.

JEAN HARRIS, A. B. *Thornton*

Student Council of Cone Bottoms Hall '34.

REBECCA HARRELSON, A. B. *Arkadelphia*

Secretary Senior Class '35; Football Maid '32.

CHARLES WELCH, A. B. *Arkadelphia*

Treasurer Senior Class; Little Symphony Orchestra '32, '33, '34; Band '32, '33, '34, '35; Vice President Band '34, '35; Second Lieutenant R. O. T. C. '35.

OUR CHITONIAN



LORA BATTLES, A. B. *Hot Springs*

Pi Kappa Tau, Scholarship Society '35; Little Symphony Orchestra '32, '33, '34, '35; Secretary Y. W. A. '33; Signal Staff '33, '35; Piano Class '34, '35; Life Service Band '33, '34, '35; "Tom-Tom" Essay Editor '35.

GERVAIS BERRY, A. B. *Crossett*

Sons and Daughters '32, '33, '34, '35; Baseball '33; First Lieutenant R. O. T. C. '35.

LUCILLE BOGGS, A. B. *McRae*

Life Service Band '32, '33, '34, '35; Keyboard Clickers '35.

MRS. DAVID EARL BROWNING, A. B. *Texarkana, Texas*

Transfer from El Dorado Junior College; Life Service Band '35; Ministerial Auxiliary '35; Greek Club '35; Secretary Greek Club '35.

ULMAN BRUNER, A. B. *Mineola, Texas*

"O" Association; Football '32, '33, '34.

IRWIN BURLISON, A. B. *Heber Springs*

Greek Club '34, '35; Life Service Band '32, '33, '34, '35; Ministerial Association '32, '33, '34, '35; Secretary Ministerial Association '33.



JOSEPHINE CANNON, A. B. *Hope*

Little Symphony Orchestra '32, '33, '34; Ouachita Players '32, '33, '34, '35; Treble Cleff Club '33, '34, '35; W. C. F. '32, '33, '34, '35; Student Council of Cone Bottoms Hall, Treasurer '34; President '35; Sons and Daughters Club '32, '33, '34, '35; Pi Kappa Tau, Scholarship Society '34, '35; Piano Class '32, '33, '34, '35.

AUSTIN CAPPS, A. B. *Gurdon*

Rifle Team '34, '35; First Lieutenant R. O. T. C. '35; Tennis '32.

MARY SUE CARTER, A. B. *Little Rock*

Secretary Junior Class '34; Kewpie Club '32, '33, '34, '35; "Chief", Kewpie Club '35.

MARY CATHERINE CONDRAY, A. B. *Arkadelphia*

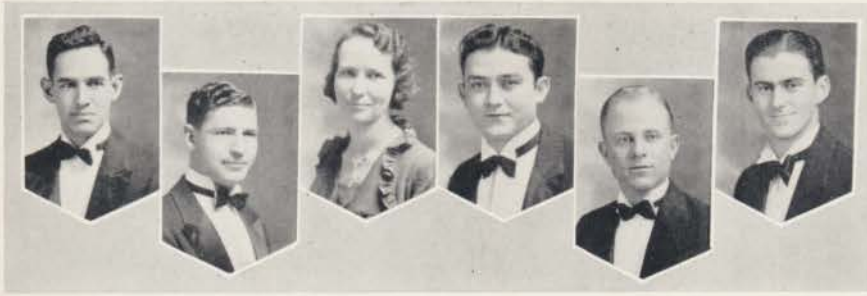
Ouachita Players '32, '33, '34, '35; Vice-President Ouachita Players '34, '35; Pi Kappa Tau, Scholarship Society '34, '35; Sons and Daughters Club '32, '33, '34, '35.

WILLIAM COUCH, A. B. *Little Rock*

Transfer from Magnolia '34; Ministerial Association '34, '35; Vice-President Ministerial Association '34; Greek Club '34, '35; Vice-President Greek Club '35.

ESMA SUE CRAWFORD, A. B. *Arkadelphia*

QUACHITONIAN



Z. L. CRAWFORD, A. B. *Pine Bluff*
 Rifle Team '32; Sons and Daughters Club '32, '33, '34, '35.

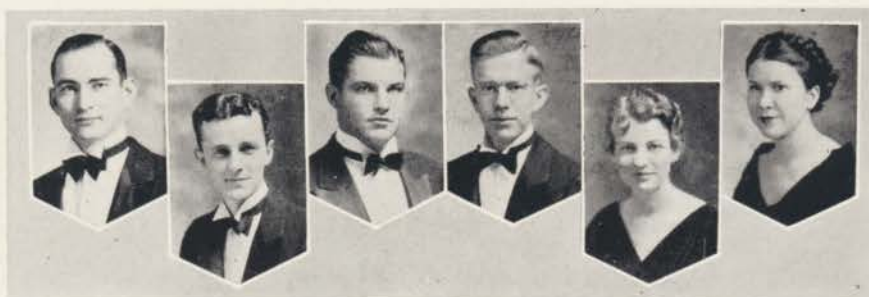
MORRIS DANIEL, A. B. *Sparkman*
 Ministerial Association '32, '33, '34, '35; Life Service Band '32, '33, '34, '35; Debate '32, '33;
 Glee Club '32, '33.

LENNIE DAVIS, A. B. *Arkadelphia*

DAVID DEFIR, A. B. *McGehee*

ECIL DOUTHITT, B. S. *Magazine*
 Transfer Arkansas Tech '34; B. S. U. Council '35.

JAMES T. DRAPER, A. B. *Malvern*
 Life Service Band '32, '33, '34, '35; Greek Club '34, '35; Ministerial Association '32, '33, '34,
 '35; President Ministerial Association '34.



ROSS EDWARDS, A. B. *Star City*

Ministerial Association '32, '33, '34, '35; President Ministerial Association '34; Life Service Band '32, '33, '34, '35; International Relations Club '32, '33; Vice-President International Relations Club '32; Debate Club '32, '33, '34, '35; Vice-President Debate Club '33; Greek Club '34, '35.

OTHO LEE ELLEDGE, A. B. *Fordyce*

Dramatic Club '32, '33, '34, '35; Field Secretary 1000 Club '34; Treasurer, B. Y. P. U. '32.

GEORGE EMORY, A. B. *Bauxite*

Little Symphony Orchestra '32, '33; Band '32, '33, '34, '35; Track Trainer '32.

CHARLES FIGLEY, A. B. *Judsonia*

Ouachita Players '32, '33, '34, '35; Treasurer Ouachita Players '34; Band '32, '33, '34, '35; Treasurer Band '35; Little Symphony Orchestra '33; Pi Kappa Tau, Scholarship Society '35; President B. Y. P. U. '32; Assistant, Chemistry Laboratory '34, '35; Captain R. O. T. C. '35.

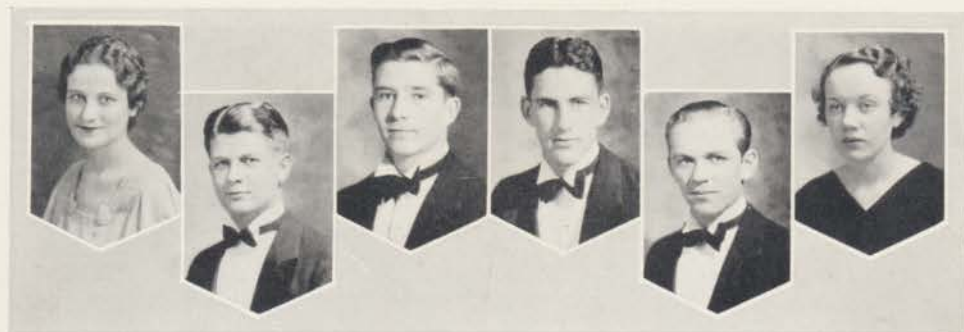
AVA FISH, A. B. *Star City*

Little Symphony Orchestra '32, '33, '34; Secretary Little Symphony '33; Vice-President '34; Pianist Y. W. A. '33, President '35; Treble Cleff Club '32, '33, '34, '35; Reporter Treble Cleff Club '33, Secretary '35; Student Council of Cone Bottoms Hall '34, '35; Secretary Student Council of Cone Bottoms Hall '34; Piano Class '32, '33, '34, '35; Pi Kappa Tau, Scholarship Society '34, '35; W. C. F. '35.

LUCILLE GALLOWAY, A. B. *Stamps*

Transfer Magnolia A. & M. '34; Signal Staff '34, '35; B. S. U. Council '34, '35; Life Service Band '34, '35; Student Council of Cone Bottoms Hall '35.

OUACHITONIAN



WANDA GARY, A. B. *Dumas*

Transfer from Central College '34; Piano Class '34, '35; President Piano Class '35; President Y. W. A. '35; B. S. U. Council '34, '35; Reporter B. S. U. Council '34, Pianist '35; Accompanist Treble Clef Club '34, '35; Vice-President Sunday School Class '35; Pi Kappa Tau, Scholarship Society '35; Signal Staff '34, '35.

LAWSON GLOVER, A. B. *Malvern*

Signal Staff '32, '33, '34, '35; Business Manager Signal '35; Sons and Daughters Club '32, '33, '34, '35; Second Lieutenant R. O. T. C. '35; Board of Publications '34, '35.

LOUIS GUSTAVUS, A. B. *Brinkley*

Transfer from Jonesboro Baptist College '34; Ministerial Association '34, '35; Life Service Band '34, '35; Greek Club '34, '35; Sons and Daughters Club '34, '35; Pi Kappa Tau, Scholarship Society, '35; President Sunday School Class '35; President B. Y. P. U. '34; "Ouachitonian" Staff '35.

HARRY HARDAGE, A. B. *Arkadelphia*

"Ouachitonian" Staff; Advertising Manager of Ouachitonian '35; "Red Shirts" '35.

ALVIN HARDIN, A. B. *Camden*

FRANCES McMILLAN *Arkadelphia*

Treble Clef Club '32, '33, '34, '35; President Treble Clef Club '35; Pi Kappa Tau Scholarship Society '34, '35; Vice-President Pi Kappa Tau '35; Ouachita Players '34, '35.



WOODROW HARRELSON, A. B. *Arkadelphia*

President B. Y. P. U. '33; Rifle Team '33; Adjutant R. O. T. C. '35.

WALLACE HERBERT, B. S. *Arkadelphia*

Track Team '35; Debate Club '35; Winner Hamilton Moses Extemporaneous Debate Contest '34; International Relations Club '35; Life Service Band '35; "O" Association '35.

MAVOLA JOHNS, A. B. *Mena*

Life Service Band '34, '35; President Life Service Band '34; Second Vice-President '35; Greek Club '34, '35; Treasurer and Social Chairman Greek Club '34, '35; General Secretary B. Y. P. U. '34; Superintendent Junior Department Sunday School '35; Mission Chairman Y. W. A. '34; Personal Service Chairman '35.

WILFORD LEE, A. B. *Pine Bluff*

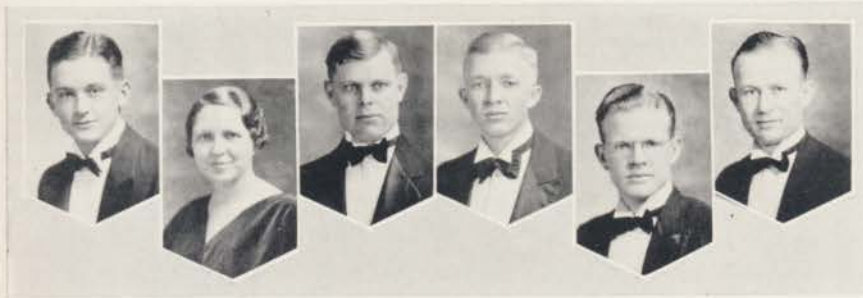
Signal Staff '33, '34, '35; Editor Signal '35; B. S. U. Council '33, '34; President B. S. U. Council '34; Board of Publications '34, '35; Pi Kappa Tau, Scholarship Society '34, '35; Debate Club '32, '33, '34; Ministerial Association '32, '33, '34, '35; President International Relations Club '35; Ouachita Players '32, '33, '34, '35; Life Service Band '32, '33, '34, '35; Snap-shot Editor "Ouachitonian" '34; President Sunday School Class '35; President B. Y. P. U. '35; Captain R. O. T. C. '35.

TOMMIE LESLIE, A. B. *El Dorado*

"O" Association; Football, '31, '32, '33, '34; All-State Football '32; Track '31, '32, '33, '34; Assistant Athletic Coach '35.

ROBERT LIPPARD, A. B. *Statesville, North Carolina*

"O" Association; Football '31, '32, '33; President Sophomore Class '32; Second Lieutenant R. O. T. C. '35.



HALLIE MATLOCK, A. B. *Arkadelphia*
 Rifle Team '33, '34, '35; Chemistry Laboratory Assistant '33, '34, '35; Captain R. O. T. C. '35.

BERNICE MCCARROLL, A. B. *Walnut Ridge*
 Pi Kappa Tau, Scholarship Society '35; Ouachita Players '32, '33, '34, '35; Treble Clef Club '32, '33, '34, '35; President Treble Clef Club '35; Student Council of Cone Bottoms Hall '32, '35; Vice-President Student Council of Cone Bottoms '35; Secretary Sophomore Class '33.

JAMES A. OVERMAN, A. B. *Arkadelphia*
 Life Service Band '32, '33, '34, '35; Ministerial Association '32, '33, '34, '35; Greek Club '34, '35; Pastor Second Baptist Church, Arkadelphia '32, '33, '34, '35.

TOM PAYNE, A. B. *North Little Rock*
 Transfer Little Rock Junior College '34; Ministerial Association '34, '35; President Ministerial Association '35; Greek Club '34, '35; Life Service Band '34, '35; Little Rock Club '34, '35.

LOWELL W. QUEEN, A. B. *Prescott*
 Transfer Magnolia A. & M. '33; Band '33, '34; Life Service Band '33, '34, '35; Chorister B. S. U. Council '34; Secretary Sunday School Class '34; Glee Club '33; Little Symphony Orchestra '33, '34; President Red River Association B. T. U. '35; Student Choir Director First Baptist Church '33, '34, '35; B. T. Chorister '33, '34, '35; Sons and Daughters Club '33, '34, '35; Rifle Team '34.

HOYT ROWLAND, B. S.
 Transfer State Teachers College '35; "O" Association; Football '35; Assistant Basketball Coach '35.



AGNES RHODES, A. B. *Arkadelphia*

Transfer from Henderson '33; Treble Clef Club '33, '34, '35; Dramatic Club '33, '34.

MORRIS SHEPPARD, A. B. *Bauxite*

Pi Kappa Tau, Scholarship Society '34, '35; Treasurer Pi Kappa Tau '35; Second Lieutenant R. O. T. C. '35.

JOE STILES, A. B. *Little Rock*

President Arkansas B. S. U. '32, '33; Ministerial Association '32, '33, '34, '35; President Ministerial Association '34; Life Service Band, President Life Service Band '32; Pi Kappa Tau, Scholarship Society, '34, '35; President Pi Kappa Tau '35; Vice-President Junior Class '34.

JOE STRICKLAND, A. B. *Thornton*

"O" Association; Basketball '32, '33, '34, '35; Captain Basketball Team '35; Baseball '32, '33, '34.

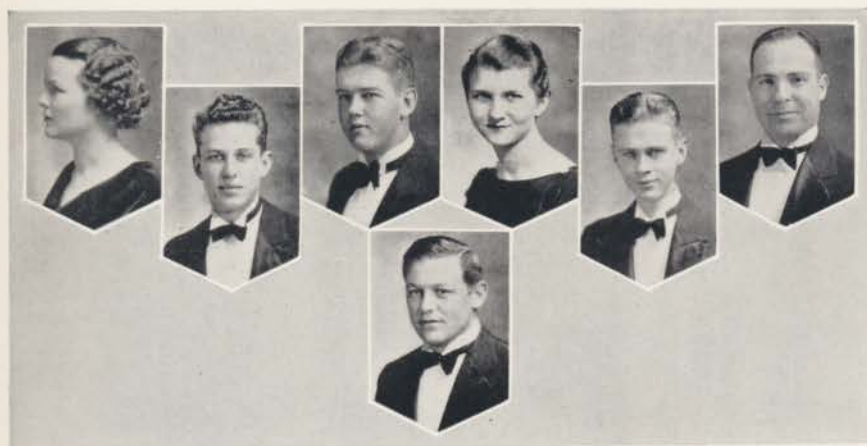
JOE SULLIVAN, A. B. *Bauxite*

Ministerial Association '32, '33, '34, '35; Treasurer Ministerial Association '33; Treasurer Junior Class '34; President Student Council '34, '35; Assistant Student Manager '33; Student Manager '34, '35; Life Service Band '32, '33, '34, '35; President Life Service Band '33.

SARA THOMAS, *Gurdon*

Life Service Band '32, '33, '34, '35; Secretary Life Service Band '35.

OUACHITONIAN



CORDELIA TONRY, A. B. *Warren*
 Pi Kappa Tau, Scholarship Society '34, '35; Secretary Pi Kappa Tau '35.

JAMES TULL, A. B. *England*
 Life Service Band '32, '33, '34, '35; President Life Service Band '34; President Sunday School Class '33; President B. Y. P. U. '33; Treasurer Sophomore Class '33; Rifle Team '34, '35; Signal Staff '33; Fund Committee '35; Business Manager "Ouachitonian" '35; Board of Publications '35; B. S. U. Council '32, '34, '35; President B. S. U. Council '35; Cadet Major R. O. T. C. '35; Who's Who, Best All-Round Boy '35.

CLEVE TURNER, A. B. *Arkadelphia*
 Sons and Daughters Club '32, '33, '34, '35; First Lieutenant R. O. T. C. '35.

OLIVE MARIE WRIGHT, A. B. *Arkadelphia*
 Pi Kappa Tau, Scholarship Society '34, '35; Life Service Band '34.

JACK YEAGER, B. S. *Camden*
 Glee Club '32, '33; Vice-President Glee Club '32; Ouachita Players '32, '33, '34, '35; President Ouachita Players '34, '35; Little Symphony Orchestra '32, '33, '34, '35; Vice-President Little Symphony '33; Librarian '34; Treasurer '35; President Junior Class '35; First Lieutenant R. O. T. C. '35; Band '32, '33, '34, '35; President Band '35; Pre-Med Club '35; President Pre-Med Club '35.

JAMES OLIVE YOUNG, A. B. *Holly Grove*
 Ministerial Association '32, '33, '34, '35; President Ministerial Association '35; Life Service Band '32, '33, '34, '35; Greek Club '34, '35; President Greek Club '35; President B. Y. P. U. '31; Vice President Ministerial Association '34.

JOHN FLOYD, A. B. *Nashville*
 "O" Association; President "O" Association '34, '35; Football '32, '33, '34, '35; Captain Football '35; All-State Football '32, '33, '34, '35; Captain All-State Football Team '35; Track '32, '33, '34, '35; Vice-President "Red-Shirts" '35; Who's Who, Best Athlete '34, '35.



HARRY HARDAGE

*"As spears go down with beauty, so you went,
Shaping the perfect arc in air. O bright
And sp'endid javelin with power spent,
Ceasing its brief, its unretarded flight.
Not if I could, with pity or with awe,
Would I hold back one moment of your days
From that half-circle drawn without a flaw
And ended here. There are unkinde ways
For men to travel than your airy track
Across the morning. Now the spear is thrust
Deep into earth, but in that sudden, black
Descending was no whimpering of dust.
Safe in the warm, brown sheath forever hide
Your published beauty and your silver side."*

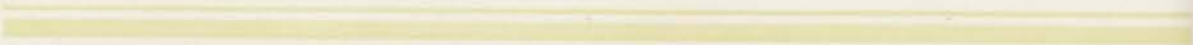
OUR CHITONIAN

JuniORS



JUNIOR CLASS OFFICERS

- HUBERT CONE *President*
- MARTHA JEAN MEADOR *Vice-President*
- HAROLD LEETON *Treasurer*
- LERIE RINER *Secretary*



OUR ACHITONIAN

GERALD TRUSSEL *Hot Springs*

LYNDA WEBB *Arkadelphia*

WARD FOWLER *Hot Springs*



HELEN HOLLAND *Arkadelphia*

CHARLES VARNELL *Lonoke*

ELSIE WOMACK *Camden*



STERLING ABERNATHY *Fordyce*

VIRGINIA TOMPKINS *Burdette*

NAMAN DAVIS *Star City*



FAYE GOODWIN *El Dorado*

RAYMOND BOYLE *Arkadelphia*

LERLIE RINER *Holly Grove*



WILFORD HARRIS *North Little Rock*

MARGUERITE RHODES *Arkadelphia*

BRUCE LOWE *Shreveport, La.*



JOSEPHINE COLLIE *Little Rock*

JAMES CLAUDE PERRY *Dermott*

CHRISTINE STRANBURG *Hot Springs*





ELAINE DIGBY North Little Rock

BILLY PATTERSON Searcy

LA RUE WILLIAMS Hot Springs

LESTER GARNER Fordyce

CATHERINE MANKIN Fort Smith

WILLIAM MANKIN Fort Smith

LOUISE COX Cartlage

HARVEY ELLEDGE Brinkley

MRS. HARVEY ELLEDGE Brinkley

RAY LANGLEY Walnut Ridge

CLAUDIA MANN Malvern

J. W. BETHEA Arkadelphia

GLADYS TAYLOR Hot Springs

ARTHUR PETERSON Little Rock

FRANCES MICHEL Oil City, La.

DAVID EARL BROWNING . . Texarkana

NANNIE SMITH Fouke

NOLAN CRAWFORD Arkadelphia

OUR CHITONIAN

LOYAL PRIOR *Little Rock*

MRS. LOYAL PRIOR *Little Rock*

BILLY NICHOLS *Parkdale*



C. E. LAWRENCE *Beebe*

CORRINE BRASHEARS *Arkadelphia*

MERRIL PITTMAN *Sparkman*



HENRY GORDON BARRETT *Little Rock*

NANCY PEARL KEELING *Malvern*

HARRY HALL *Arkadelphia*



CLELL McCLURE *Nashville*

RUTH VICK *Arkadelphia*

TAYLOR ALEXANDER *Hope*



CECIL GAMMIL *Nashville*

ARNETTA HERBERT *Arkadelphia*

EVAN MITCHELL *Denver, Colo.*



RALPH MANN *Judsonia*

MARY KENNEDY *Magnolia*

ALBERT MOSELEY *Fordyce*





LEWIS URTON *Carlisle*

MRS. J. D. GOLDSMITH *Clarksville*

J. D. GOLDSMITH *Clarksville*

DORIS MICHEL *Oil City, La.*

JAMES HOBGOOD *Arkadelphia*

RUBY REECE *Hot Springs*

HORACE CAMMACK *Monticello*

ELAINE BRAUGHTON . . . *Hot Springs*

SETH THOMPSON *Waldron*

RUTH MEARS *Fountain Hill*

DOLPHUS WHITTEN *Gurdon*

NINA JOHNSON *Nashville*

OSWALD WARMACK *Hope*

SHIRLEY HOLLIS *St. Joseph, La.*

GEORGE JERNIGAN *Rector*

SARAH LOWREY *Hot Springs*

ARTHUR NEW *Quitman*

MARY LOWE *Helena*

OUR CHITONIAN

JOE F. GILLESPIE, JR. *Carlisle*

GLADYS McMANUS *Thornton*

E. M. SLEEKER *Eudora*

JANE DANIEL *Arkadelphia*

SINCLAIR WINBURN *Arkadelphia*

JEANETTE HAMLIN *Telula, Miss.*

WILLIAM FULCHER *Carlisle*

HELEN SMITH *Pine Bluff*

TRAVIS WITHERINGTON *Woodberry*

MRS. JAMES T. DRAPER *Arkadelphia*

NORBERT LUKEN *Helena*

LOUISE RAY *Arkadelphia*

JONNIE STILES *Little Rock*

JAMES KELLEY *Lonoke*

JUANITA McMILLAN *Arkadelphia*

NEILL McCASKILL *Arkadelphia*

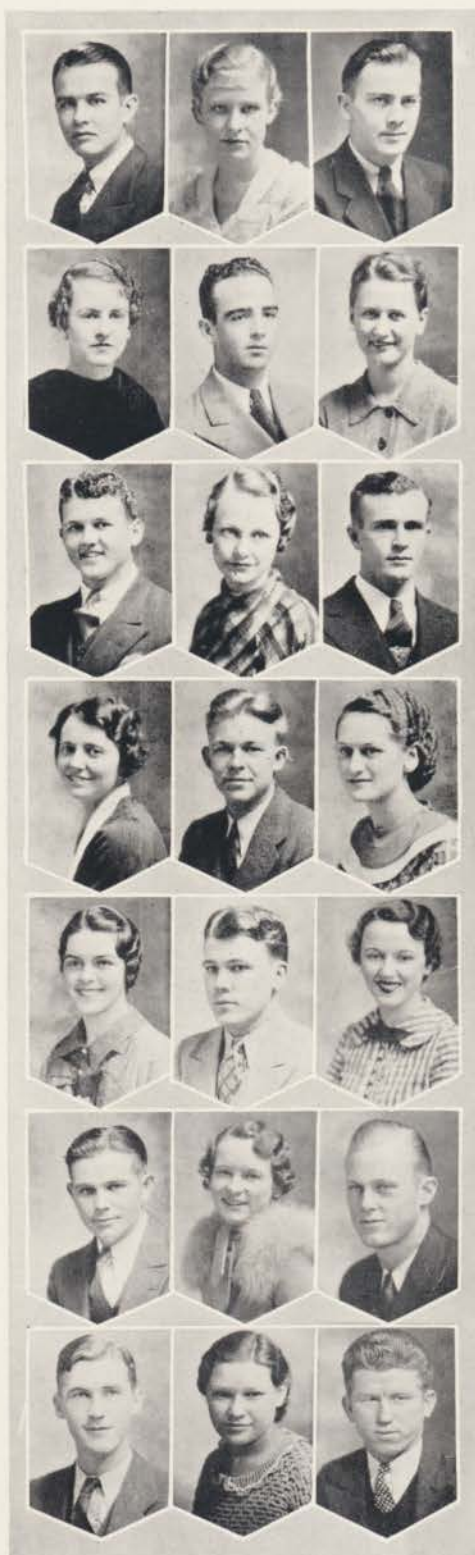
EUNICE REECE *El Dorado*

WILLIAM SHUFFIELD *Nashville*

JEWELL SHOPTAW *Detonti*

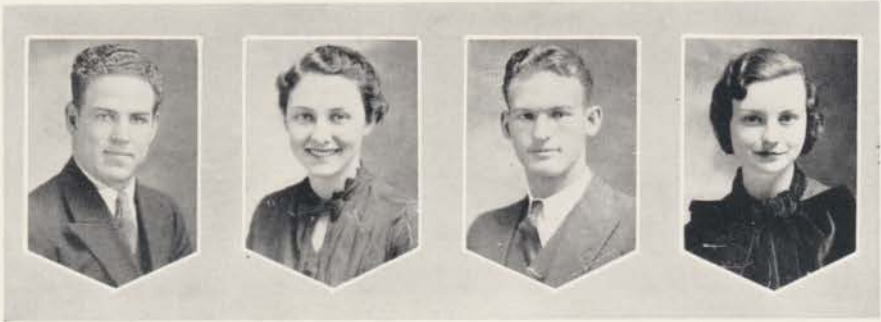
WILMA JEAN HERRING *McRae*

GUS ALBRIGHT *Hoxie*



OUR CHITONIAN

SOPHOMORES



SOPHOMORE CLASS OFFICERS

ELMO CHANEY	<i>President</i>
MARY ELIZABETH HALL	<i>Vice-President</i>
RAY WOODEL	<i>Treasurer</i>
DOROTHY DOLLARHIDE	<i>Secretary</i>

OUR CHITONIAN

MARJORIE McGEHEE

WILSON IRBY

VIRGINIA GIBSON

GEORGE GRANT

RAY OWEN

CECILE EDWARDS

WINSTON DANIEL

MELBA ASHMORE

MARGARET KIME

RALPH KELLER

DOROTHY PITTMAN

MAX BRASWELL

BOB UTLEY

FRANCES SWAIM

OTTO WHITTINGTON

ROSEMARY REED

JIMMIE D. BROCK

WELTON HUDGINS

BOBBIE COOPER

WALTER BRANDON

THERON PRICE

NELL VIRGINIA KINCANNON

CHESTER HENDERSON

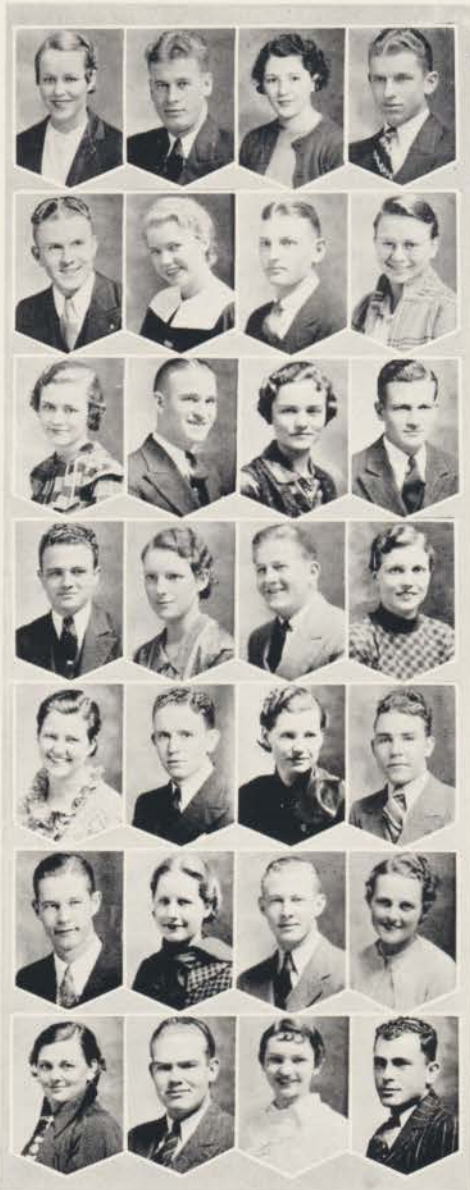
CHARLOTTE JUCHHEIM

ALLINE SHARP

THOMAS LAVIN

ALICIA SUMMERS

DEWEY BLACKWOOD





BERNARD NOLAN

JESSIE HORTON

J. C. SMITH

HELEN WESTBROOK



WINIFRED WALTON

IRIS BUCKLEY

JOHN BURGESS

CLAUDINE EDWARDS



FRANCES BOYLE

JOE LIPPARD

ELSIE MAE EPES

MARSH WHITTINGTON



GARLAND ANDERSON

OPAL DAMEH

FRED STRICKLAND

BETTY SUE CUNNINGHAM



FERN DYER

J. W. SANGES

EVELYN BREWSTER

J. D. BURNETT



CLIFTON ARNOLD

JO WILSON

BEVERLY MORRIS

HORTICE FOWLER



FLOTA SMITH

J. T. OGLESBY

GENEVA BOYER

BROOKS McCRAY

OUR CHITONIAN

SAMMY SEWELL

MAURINE LAY

MED HALE

MRS. MED HALE

ANNICE CAGLE

DREXEL CRINER

MARGUERITE BABB

BURKE SIPES

DANIEL WEBSTER

VERA SALLEE

CHARLES HAGIN

MARJORIE HIGGASON

MARY ELLEN LINDVALL

D. S. FLOYD

DORIS BRADLEY

PAUL AIKEN

JEFF PEMBERTON

REBA HICKS

RUSSELL BARNETT

DOROTHY CARROLL

VERNA TOMMIE GREEN

BERNES SELPH

MAURINE HANKINS

JACK HERNSBERGER

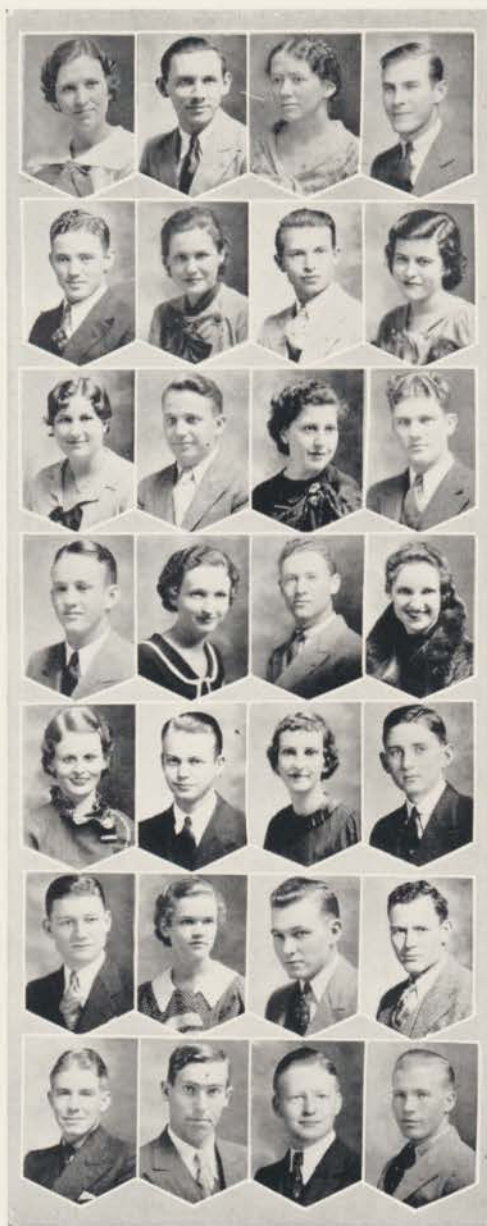
CLYDE BURKETT

VIVIAN BACHELOR

HAROLD WEBB

IRENE RICE





MARY KELLEY
 WILLIAM HALTOM
 MYRNA SPRING
 NEILL DAVIS

ROY COOK
 IRMA SUMNERS
 JOHN DURHAM
 JOSEPHINE LEWIS

SAMMIE LIVINGSTON
 BILLY TOMPKINS
 CHARLOTTE ROGERS
 EDGAR HARVEY

JAMES WATKINS
 LOUISE CHANBERS
 BERNARD DOSSETT
 LOUISE BAYNHAM

BESSIE MAE ELCAN
 CHARLES BIRD
 HARRIET FLEMING
 ROY PAMPLIN

JAMES CRAIG
 EMMA JEAN PARKER
 RAYMOND MORRIS
 GERALD VARNELL

JOE RUSSELL
 JOHN DUNLOP
 WEAVER THOMASSON
 JAMES QUEEN



JAMES QUEEN

*"He's gone.
I do not understand.
I only know
That as he turned to go
And waved his hand
In his young eyes a sudden glory shone;
And I was dazzled by a sunset glow,
And he was gone."—Selected.*

OUR CHITONIAN

FRESHMEN



FRESHMAN CLASS OFFICERS

PHILLIP BEST *President*

ANNE TOMPKINS *Vice-President*

DALE WARD *Treasurer*

CHERRY WINBURN *Secretary*

OUR CHITONIAN





OUR CHITONIAN



FRESHMAN CLASS—GROUP ONE

Key Crouse, Alice Whatley, Charles Illing, Alleyne Capps, Clarke Mosley, Grace Thomasson, Era Adcock, Lillian Rutherford, Hugh Cockrill, Louise Hope, Carl Schooley, Ernestine Taylor, James Meachem, June Oltman, Walter Gardiner, Louise England, Harry Claibourne, Marian Blount, James Hutson, Gladys Tillman, Melvin Rice, Helen Hobbs, Gordon Ratcliff, Inez Taylor, Robert Hicks, Jewell Wise, Bert Lawing, Frances Lowe, John A. Aubry, Mary Morris, Randall Loftis, Posey Sellers, Howard Lehman, Molly Sue Starnes, Winifred Key, Ruby Smith, Billy Dunlop, Lois Reagan, Morton Rankin, Mrs. Billy Cook, Arnold Sheppard, Geneva Adams, Elmer Stuart, Carey Clinton, Jane Elmore, J. C. Jordon, Irene Whatley, John Goodman, J. Patterson.

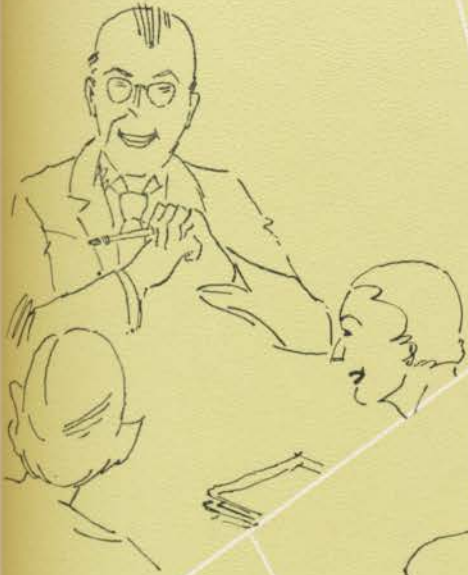
FRESHMAN CLASS—GROUP TWO

Lowell Tackett, Elaine Millsapps, Lewis Goza, Gertrude Moore, Hugh Igleheart, Elizabeth Bennett, Edwin Guerin, Grace Martin, C. G. Davis, Tillie Westfall, Buel Owens, Estelle Story, E. L. Finch, Pen Lile Compere, Earl Erion, Vera Cypert, Felts Rector, Lita Cole Simmons, Raymond Richards, Sarah Marie McDowell, Hugh Tate, Maud Sue Johnson, Joe Arnett, Virginia Orr, Nelson Greenleaf, Dean Daughtery, Marvin Faulkner, Margaret Hudson, Silbie Wallis, Mrs. Cecil Gammil, William De Shong, Dell Dobbins, J. E. Teague, Vaunda Turner, J. D. Thomas, Mrs. Raymond Taylor, James Kincannon, Lawrence Berry, Roy White, Grover Long, S. A. Whitlow, Wanda Mitchell, A. J. Goforth, Rose Bostic, Fritz Goodbar, Cornelia Herbert, C. E. Bryant, Ernestine Garner, Albert Edwards.

FRESHMAN CLASS—GROUP THREE

Elton Lyle, Frances Morton, Tom Digby, Robbie Haygood, Howard Halsell, Ella Sue Rowe, Paul Power, Marjorie Hudson, Claude Durrett, Virginia Preddy, H. A. Fisks, Nell Jean Connelly, Opal Womack, Hazel Mae Wilder, G. L. Hardgraves, Marie Braden, Lowell Stiles, Dorothy McClean, Herbert Gorum, Maxine Gary, Charles Ashcraft, Fern Garner, B. F. Worley, Louise Capps, Claude McCaskill, Lora Allison, George Ramel, Jewell Carter, Arnold Hall, Margaret Rhine, Alsey Holland, Mary Ann Faulkner, William Durrett, Katherine North, Bon Nell Birkhead, Aline Stevenson, Clyde Wooten, Naomi Fowler, Eugene Locklar, Hope Wise, Herbert Daughtery, Vera Mae Martin, Alfred Heider, Albert Condray, LaVerne Hall, Jerine Matthews, Margaret Locklar, Arno Tillman, Langdon Berryman.

A C T I V I T I E S





WILFORD LEE
Editor

LAWSON GLOVER
Business Manager

SIGNAL STAFF

HELEN SMITH	<i>Associate Editor</i>	DOROTHY DOLLARHIDE	<i>Reporter</i>
E. M. SLEEKER	<i>Managing Editor</i>	LUCILLE GALLOWAY	<i>Reporter</i>
WANDA GARY	<i>Society Editor</i>	DORIS MICHEL	<i>Feature Writer</i>
RAY OWEN	<i>News Editor</i>	LAWRENCE DUGGAR	<i>Feature Writer</i>
CATHERINE MANKIN	<i>Humor Editor</i>	C. E. BRYANT	<i>Reporter</i>
SETH THOMPSON	<i>Sports Editor</i>	VIRGINIA GIBSON	<i>Reporter</i>
ROSEMARY REED	<i>Copy Editor</i>	BILLY MANKIN	<i>Reporter</i>
LORA BATTLES	<i>Reporter</i>	GLADYS TAYLOR	<i>Reporter</i>
NELL VIRGINIA KINCANNON	<i>Reporter</i>	CHARLES HAGAN	<i>Assistant to Business Manager</i>
DORIS BRADLEY	<i>Reporter</i>	CHARLES BIRD	<i>Assistant to Business Manager</i>

Dan Cupid Again Takes Charge

HOMECOMING EDITION

SIGNAL

Tiger-Warrior Club Features in Homecoming

935 Notre Dame Bounced Tigers to Meet at Little D

To Be Left By Senior Class

Tigers Win Conference Title as Reddies Fall



THE OUACHITONIAN

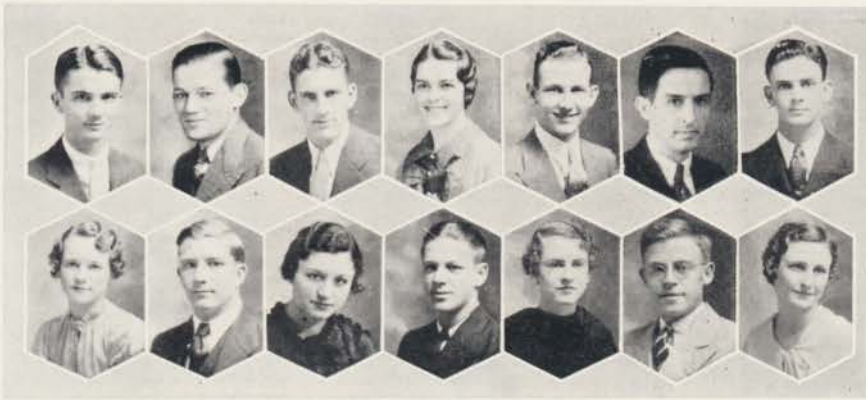
WILFORD M. HARRIS *Editor and Art Editor*

JAMES TULL *Manager*

We, The Staff, willingly submit to any criticism which you may direct against this 1935 volume of the Ouachitonian. We make no defense of our efforts, except to point out the fact that the publication of an annual under even the most favorable conditions is a heavy responsibility, a source of worry, and a problem which produces criticism. If you find living in these pages something of the Ouachitonian which you have known and loved we shall consider that our long, grim battle with adverse circumstances has not been fought in vain.

The Staff acknowledges its indebtedness to the following persons, who, by their cheerful and sacrificial helpfulness, have made valuable contributions to this 1935 volume of the Ouachitonian. Dr. J. R. Grant, President of Ouachita College, Mr. LeRoy Thompson, Arkadelphia Photographer; Mr. R. L. Scott, Peerless Engraving Company; Mr. Todd Ellis, Russellville Printing Company; Mr. and Mrs. W. P. Jones, Arkadelphia; Arthur G. New, Ouachita College; Miss Frances Swaim, Ouachita College; Aubrey C. Halsell, Louisville, Kentucky; Mr. and Mrs. Nelson Tull, Little Rock.

OUACHITONIAN



OUACHITONIAN STAFF

JAMES HOBGOOD	Associate Editor
WILLIAM MANKIN	Feature Editor
HARRY HARDAGE	Advertising Manager
JONNIE STILES	Secretary
BRUCE LOWE	Snapshot Editor
JOE STILES	Religious Editor
RUBERT CONE	Sports Editor
EUNICE REECE	Typist
LEWIS GUSTAVIS	Assistant to Business Manager
ELAINE DIGBY	Typist
HOWARD HALSELL	Assistant to Business Manager
JANE DANIEL	Society Editor
EVAN MITCHELL	Literary Editor
DORIS MICHEL	Typist

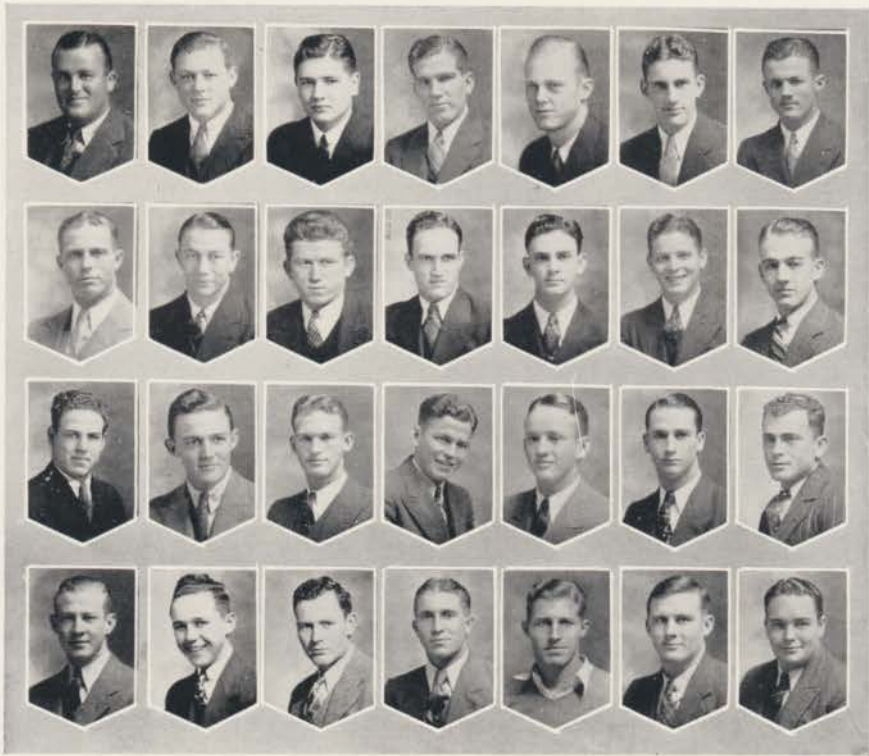


A. Moore '35

OUR CHITONIAN







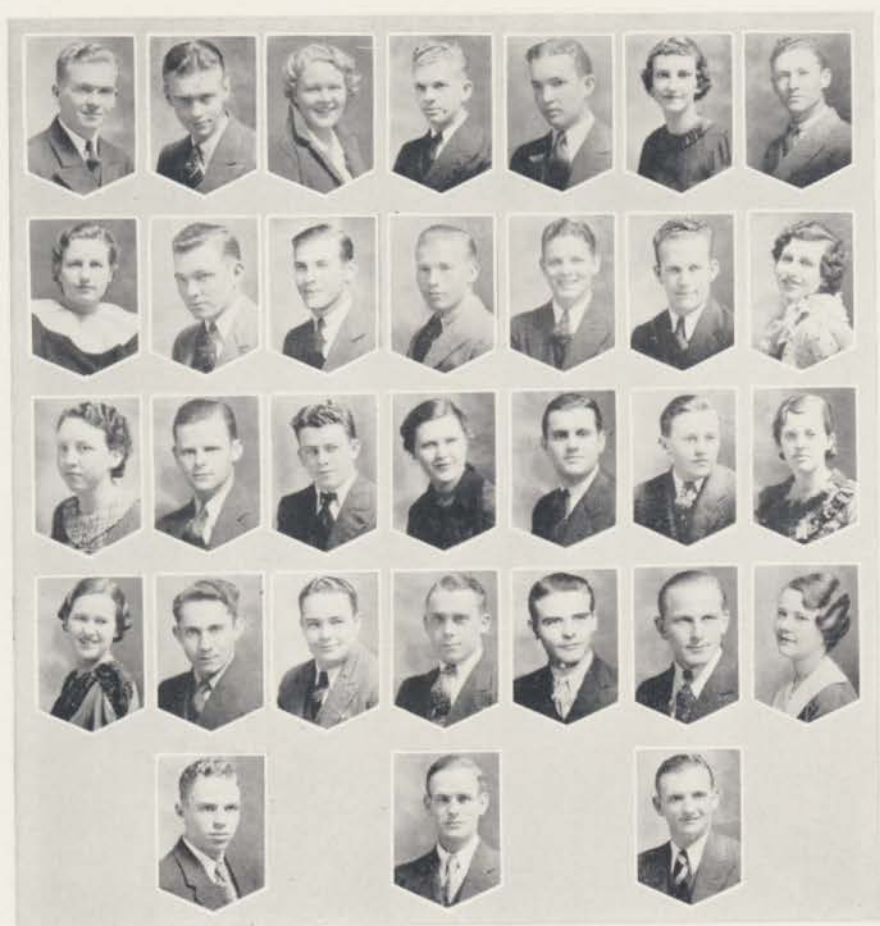
RED SHIRTS

OFFICERS

- | | | |
|-----------------|-----------|----------------------------|
| CHARLES VARNELL | | <i>President</i> |
| JOHN FLOYD | | <i>Vice President</i> |
| HAROLD LEETON | | <i>Secretary-Treasurer</i> |
| BILLY NICHOLS | | <i>Sergeant-at-Arms</i> |

MEMBERS

- | | | |
|-------------------|-------------------|-------------------|
| WILLIAM SHUFFIELD | WILLIAM PATTERSON | DEWEY BLACKWOOD |
| HARRY HARDAGE | RALPH MANN | CHESTER HENDERSON |
| CLELL McCLURE | ELMO CHANEY | CHARLES HAGINS |
| JOE STRICKLAND | D. S. FLOYD | GERALD VARNELL |
| JAMES PERRY | RAY WOODELL | FRED STRICKLAND |
| GUS ALBRIGHT | CLYDE BURKETT | RAYMOND RICHARDS |
| ALBERT MOSELEY | JAMES WATKINS | ELMER STUART |
| HUBERT CONE | MORTON RANKIN | RUSSELL BARNETT |



PRE-MED CLUB

JIM JERNIGAN	<i>President</i>
JACK YEAGER	<i>Vice-President</i>
ANNICE CAGLE	<i>Secretary</i>
GEORGE JERNIGAN	<i>Treasurer</i>

MEMBERS

CLIFTON ARNOLD
 HARRIET FLEMING
 BERNARD DOSSET
 REBA HICKS
 RAYMOND MORRIS
 NEIL DAVIS
 JAMES QUEEN
 BILLY PATTERSON
 GARLAND MURPHY

ELSIE MAE EPES
 POSEY SELLERS
 WINIFRED WALTON
 BUEL OWENS
 IRENE RICE
 A. J. GOFORTH
 GEORGE HARDGRAVES
 HELEN WESTBROOK
 ANNE TOMPKINS

ALSEY HOLLAND
 RUSSELL BARNETT
 GEORGE REMEL
 BERNARD NOWLIN
 J. D. THOMAS
 JUNE OLTMAN
 TOM GOODMAN
 BROOKS MCCRAY
 F. O. BUCKLEY



HOME ECONOMICS CLUB

OFFICERS

MARY ELLEN LINDVALL	President
CLAUDIA MANN	Vice-President
WILMA JEAN HERRING	Secretary
NELL VIRGINIA KINCANNON	Treasurer

MEMBERS

LA RUE WILLIAMS
 CORRINE BRASHEARS
 HELEN SMITH
 REBECCA HARRELSON
 JUANITA McMILLAN
 RUBY REECE
 CHERRY WINBURN
 VIVIAN BACHELOR
 MARIAN BLOUNT
 DORIS MICHEL
 FRANCES McMILLAN
 NELL JEAN CONNELLY
 VERA SALLEE
 MARY KELLY

CECILE EDWARDS
 HARRIET FLEMING
 REBA HICKS
 NAOMIE FOWLER
 HELEN HOBBS
 LITA COLE SIMMONS
 LOUISE ENGLAND
 ROSE BOSTIC
 DOROTHY McCLAIN
 ROBBIE HAYGOOD
 HORTICE FOWLER
 IRENE WHATLEY
 ELSIE CAPPS
 ALICE WHATLEY

JOSEPHINE LEWIS
 FRANCES MICHEL
 LENNIE DAVIS
 HAZEL MAE WILDER
 JANE ELMORE
 MERNA SPRING
 LOUISE CAPPS
 LUCILLE TILLMAN
 MRS. BILLY COOK
 MRS. PATRICIA GUNN, *Professor
 of Home Economics*
 OPAL DAMPH
 BETTY SUE CUNNINGHAM
 VAUNDA TURNER

DUACHITONIAN



DEBATE CLUB

OFFICERS

RAY OWEN		<i>Debate Coach</i>
SETH THOMPSON		<i>President</i>
HOWARD HALSELL		<i>Vice-President</i>
DORIS BRADLEY		<i>Secretary</i>
DANIEL WEBSTER		<i>Treasurer</i>

MEMBERS

WALLACE HERBERT	LOUISE HOPE	MARIAN BLOUNT
MORRIS DANIEL	MARIE BRADEN	WENDELL ZIMMERMAN
FRANCES SWAIM	OTTO WHITTINGTON	EARL ERION
HENRY GORDON BARRETT	OTHO NEW	TILLIE WESTFALL
SAMMY SEWELL	LA VERNE HALL	MAUD SUE JOHNSON
HELEN SMITH	ROSE BOSTIC	VAUNDA TURNER
DORIS MICHEL	DALE WARD	FRANCES LOWE
JOHN BRADLEY	ESTELLE STORY	LOUIS GOZA



PI KAPPA TAU SCHOLARSHIP SOCIETY

OFFICERS

JOE STILES	President
FRANCES McMILLAN	Vice-President
CORDELIA TONRY	Secretary
MISS MADGE WADE	Faculty Sponsor
MORRIS SHEPPARD	Treasurer

MEMBERS

MARY CATHERINE CONDRAY	WANDA GARY	WILFORD LEE
LORA BATTLES	CHARLES FIGLEY	TAYLOR ALEXANDER
JAMES TULL	LOUIS GUSTAVUS	LOUISE COX
JOSEPHINE CANNON	CLAUDIA MANN	SINCLAIR WINBURN
AVA FISH	GLADYS McMANUS	RALPH MANN
OLIVE MARIE WRIGHT	RUTH VICK	NINA JOHNSON
BERNICE McCARROL	JUANITA McMILLAN	WILLIAM MANKIN
	JANE DANIEL	



PI KAPPA TAU SCHOLARSHIP SOCIETY

OFFICERS

JOE STILES	President
FRANCES McMILLAN	Vice-President
CORDELIA TONRY	Secretary
MISS MADGE WADE	Faculty Sponsor
MORRIS SHEPPARD	Treasurer

MEMBERS

MARY CATHERINE CONDRAY	WANDA GARY	WILFORD LEE
LORA BATTLES	CHARLES FIGLEY	TAYLOR ALEXANDER
JAMES TULL	LOUIS GUSTAVUS	LOUISE COX
JOSEPHINE CANNON	CLAUDIA MANN	SINCLAIR WINBURN
AVA FISH	GLADYS McMANUS	RALPH MANN
OLIVE MARIE WRIGHT	RUTH VICK	NINA JOHNSON
BERNICE McCARROL	JUANITA McMILLAN	WILLIAM MANKIN
	JANE DANIEL	

OUR CHITONIAN



STUDENT COUNCIL OF CONE BOTTOMS HALL

JOSEPHINE CANNON	<i>President</i>
BERNICE McCARROL	<i>Vice-President</i>
MISS EMILY BLAKE	<i>Dean of Women</i>
LERLIE RINER	<i>Secretary</i>
CLAUDIE MANN	<i>Treasurer</i>
AVA FISH	<i>Senior Representative</i>
LUCILE GALLOWAY	<i>Senior Representative</i>
GLADYS TAYLOR	<i>Junior Representative</i>
FRANCES SWAIM	<i>Sophomore Representative</i>
MARY ANN FAULKNER	<i>Freshman Representative</i>



OUACHITA SINGERS

JIM JERNIGAN
 MAX BRASWELL
 J. E. TEAGUE
 GEORGE JERNIGAN

ALSEY HOLLAND
 OTTO WHITTINGTON
 EDWIN GUERIN
 GEORGE GRANT

EARL ERION
 VIRGINIA TOMPKINS, *Accom-*
panist.
 PHILLIP BEST



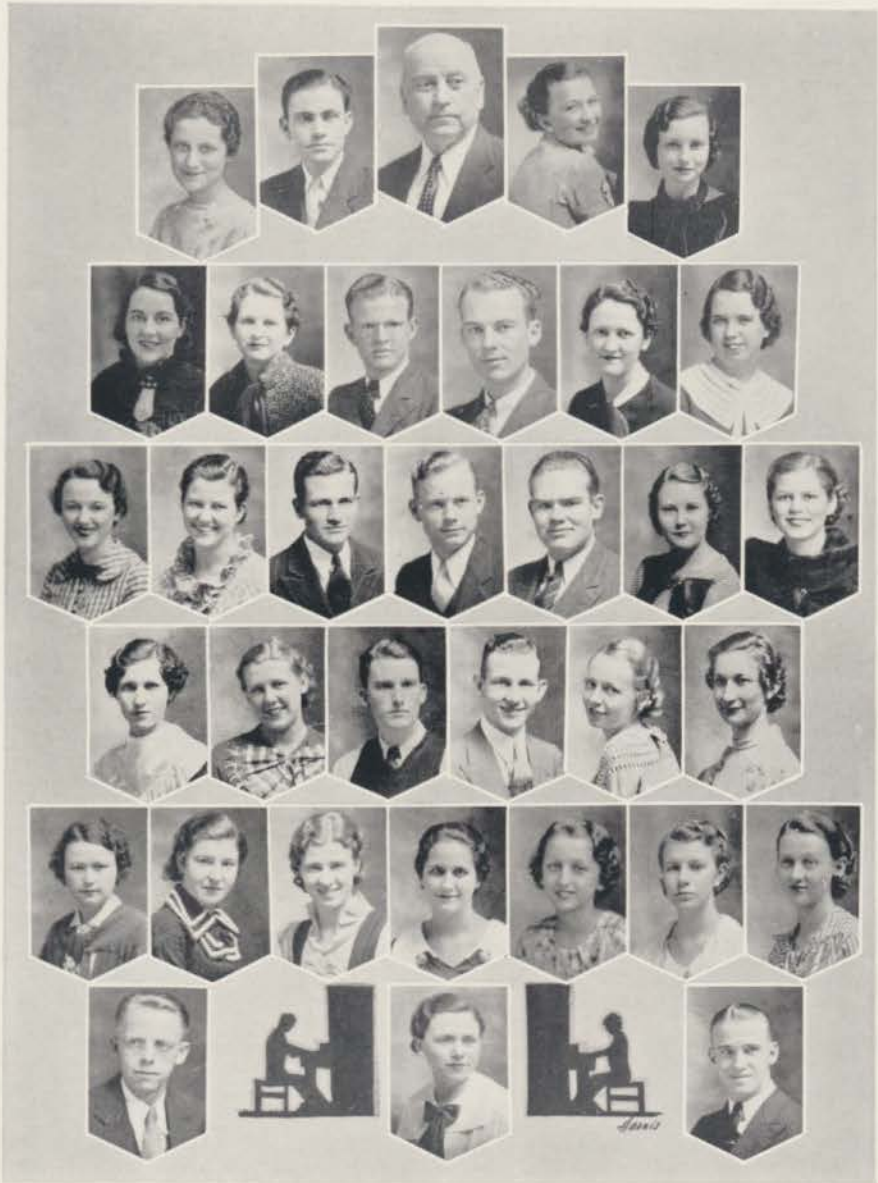
TREBLE CLEF CLUB

OFFICERS

FRANCES McMILLAN	<i>President</i>
BERNICE McCARROL	<i>Vice-President</i>
AVA FISH	<i>Secretary</i>
JONNIE STILES, JANE DANIEL	<i>Treasurer</i>

MEMBERS

CHRISTINE STRANBURG	ONEIDA SIGSBY	VERA SALLEE
WANDA GARY	AGNES RHODES	ELSIE MAE EPES
KATHERINE NORTH	JUANITA McMILLAN	CLAUDINE EDWARDS
JOSEPHINE CANNON	VERNA TOMMIE GREEN	IRIS BUCKLEY
CLAUDIA MANN	RUTH VICK	GERTRUDE MOORE
MARTHA JEAN MEADOR	MARGUERITE RHODES	DOROTHY DOLLARHIDE
SHIRLEY HOLLIS	HELEN HOLLAND	MISS FLORENCE EVANS,
EVELYN BREWSTER	CHERRY WINBURN	<i>Director</i>
RUBY REECE	IRENE RICE	MARGARET LOCKLAR
LYNDA WEBB	CECILE EDWARDS	NELL VIRGINIA KINCANNON
EDNA WEBB	ANNE TOMPKINS	HARRIET FLEMING



PIANO CLASS

OFFICERS

WANDA GARY	<i>President</i>	LIVINGSTON H. MITCHELL	<i>Professor of Piano</i>
J. E. TEAGUE	<i>Vice-President</i>	VERNA TOMMIE GREEN	<i>Secretary-Treasurer</i>
	DOROTHY DOLLARHIDE		<i>Reporter</i>

MEMBERS

Lora Battles, Lynda Webb, Lowell Queen, Kirtley Russell, Martha Jean Meador, Virginia Tompkins, Juanita McMillan, Jimmie D. Brock, Max Braswell, Phillip Best, Thomas Lavin, Ella Sue Rowe, Faye Goodwin, Lora Allison, Gertrude Moore, Eugene Locklar, Bruce Lowe, Geneva Adams, Dorothy Carroll, Elizabeth Tarplay, Marjorie Hudson, Lillian Rutherford, Maxine Gary, Katherine North, Ernestine Taylor, Sarah Marie McDowell.

HONORARY MEMBERS

Paul Crandal	Doris Bradley	Ralph Keller
--------------	---------------	--------------

QUACHITONIAN



BAND

MARY ELIZABETH HALL *Sponsor* E. J. FRANTZ *Band Director*
 BENNIE JOLNSON *Student Director* HUBERT CONE *Drum Major*
 E. J. FRANTZ, JR. *Mascot*

TRUMPETS
 GEORGE EMORY
 HORACE CAMMACK
 STERLING ABERNATHY
 LEWIS URTON
 GEORGE JERNIGAN
 HALL
 FELTS RECTOR
 PAUL POWER
 G. L. HARDGRAVES
 GEORGE REMEL
 LOWELL TACKETT
 FRED ZIMMERMAN
SAXOPHONES
 JOE BILL GILLESPIE

J. W. BETHEA
 HENRY GORDON BARRETT
 BONNEL BIRKHEAD
 JIM JERNIGAN
ALTOS
 DOLPHUS WHITTEN
 A. J. GOFORTH
 CECIL GAMMIL
 BOB UTLEY
CLARINETS
 CHARLES FIGLEY
 TRAVIS WITHERINGTON
 OSWALD WARMACK

J. W. SANGES
 JAMES QUEEN
 WENDELL ZIMMERMAN
 ELTON LYLE
DRUMS
 JACK YEAGER
 JAMES HOBGOOD
 E. M. SLEEKER
 EVAN MITCHELL
TROMBONES
 RALPH KELLAR
 CLIFTON ARNOLD
BASSES
 WELCH
 LAVIN



OUACHITA PLAYERS

OFFICERS

JACK YEAGER	<i>President</i>
CATHERINE CONDRAY	<i>Vice-President</i>
JUANITA McMILLAN	<i>Secretary</i>
BILLY MANKIN	<i>Treasurer</i>



OUACHITA PLAYERS

MEMBERS

EVAN MITCHELL
 ARTHUR PETERSON
 BERNICE McCARROL
 FRANCES McMILLAN
 AGNES RHODES
 ELSIE WOMACK
 JOE BILL GILLESPIE
 E. M. SLEEKER
 CORRINE BRASHEARS
 HELEN SMITH
 VIRGINIA GIBSON
 DOROTHY DOLLARHIDE

MARY ELIZABETH HALL
 MELBA ASHMORE
 LA RUE WILLIAMS
 HORACE CAMMACK
 MARY KENNEDY
 MAURINE LAY
 NANCY PEARL KEELING
 CHERRY WINBURN
 JIMMIE D. BROCK
 ERNESTINE GARNER
 EARL ERION
 FERN GARNER

FRANCES MORTON
 JEWEL CARTER
 ROSE BOSTIC
 TILLIE WESTFALL
 JOSEPHINE COLLIE
 VAUNDA TURNER
 WILFORD LEE
 MAX BRASWELL
 MARY LOWE
 JERINE MATTHEWS
 HOWARD HALSELL
 CHARLES FIGLEY



LIFE SERVICE BAND

OFFICERS

BRUCE W. LOWE	<i>President First Semester</i>
MARGUERITE BABB	<i>President Second Semester</i>

MEMBERS

ROSS EDWARDS	POSEY SELLERS	CECIL GAMMIL
LORA BATTLES	WILLIAM COUCH	MRS. CECIL GAMMIL
WILLIAM HALTOM	NANCY PEARL KEELING	JONNIE STILES
MELBA ASHMORE	EDGAR HARVEY	ELAINE DIGBY
JOE SULLIVAN	MRS. JAMES T. DRAPER	HOWARD HALSELL
MRS. DAVID EARL BROWNING	DOLPHUS WHITTEN	DELL DOBBINS
ARTHUR G. NEW	MRS. RAYMOND TAYLOR	ANNE TOMPKINS
BOBBIE COOPER	PHILLIP BEST	MARGARET KIME
WILFORD LEE	THOMAS DIGBY, JR.	JAMES TULL
MRS. MED HALE	JEWELL CARTER	LA VERNE HALL
MED HALE	WILFORD HARRIS	MARJORIE HUDSON
NANNIE SMITH	IRENE WHATLEY	HELEN SMITH
C. G. DAVIS	GEORGE JERNIGAN	MARIE BRADEN
VERNA TOMMIE GREEN	MARGARET LOCKLAR	ESTELLE STORY
MARSH WHITTINGTON	WILLIAM MANKIN	LUCILLE GALLOWAY
MAYOLA JOHNS	MRS. WILLIAM MANKIN	VERA MAE MARTIN
LAWRENCE DUGGER	JAMES A. OVERTON	DORIS BRADLEY
LOUIS GUSTAVUS	PEN LILE COMPERE	LUCILLE BOGGS
MARY MORRIS	MAX BRASWELL	VIRGINIA TOMPKINS
JAMES KELLEY	FLORA SMITH	LOUISE CHAMBERS
FERN DYER	WALLACE HERBERT	LILLIAN RUTHERFORD
BERNES SELPH	FRANCES SWAIM	DOROTHY PITTMAN
MARY KELLEY	LOWELL QUEEN	EVELYN BREWSTER
C. E. BRYANT	MARGARET HUDSON	EUNICE REECE
MRS. HARVEY ELLEDGE	TOM PAYNE	SARA THOMAS
HARVEY ELLEDGE		VIRGINIA PREDDY

OUR CHITONIAN





MINISTERIAL ASSOCIATION

OFFICERS

JOE STILES	<i>President First Quarter</i>
ROSS EDWARDS	<i>President Second Quarter</i>
JAMES OLIVE YOUNG	<i>President Third Quarter</i>
TOM PAYNE	<i>President Fourth Quarter</i>
DR. O. W. YATES	<i>Faculty Sponsor</i>
WITHROW HOLLAND	<i>Faculty Sponsor</i>

MEMBERS

JAMES T. DRAPER	LAWRENCE DUGGER	MARVIN FAULKNER
WILLIAM COUCH	CECIL GAMMIL	BERT LAWING
JOE SULLIVAN	GERALD TRUSSEL	E. L. FINCH
IRVIN BURLISON	EVAN MITCHELL	B. F. WORLEY
MORRIS DANIEL	LOYAL PRIOR	J. O. BURNETT
JAMES A. OVERTON	HARVEY ELLEDGE	J. T. OGLESBY
LEWIS GUSTAVUS	THERON PRICE	B. B. BENTON
WILFORD LEE	GARLAND ANDERSON	C. G. DAVIS
WILLIAM MANKIN	SILBIE WALLIS	H. A. FISK
C. E. LAWRENCE	BEVERLEY MORRIS	JOHN DURHAM
JAMES KELLEY	JOHN DUNLOP	WENDELL ZIMMERMAN
DAVID EARL BROWNING	RAYMOND TAYLOR	S. A. WHITLOW
ARTHUR PETERSON	BERNES SELPH	J. C. JONES
THEODORE GARRISON	MED HALE	PAUL CRANDALL
WILFORD HARRIS	PAUL AIKEN	NELSON GREENLEAF
NAMON DAVIS	EDGAR HARVEY	BILLY HALTOM
ARTHUR G. NEW	C. E. BRYANT	CHARLES ASHCRAFT
RIDLEY BARNETT		ECIL DOUTHITT
J. D. GOLDSMITH		E. L. BREWSTER

OUR CHITONIAN





GREEK CLUB

ΟΥΡΑΧΙΤΟΝΙΑΝ



Δανιελ Βυρλιζου Έλληδης Στίλκας Σωλίου Βραδίου Ροτσοιου Πάουε



Πατεροου Βορνασι Δοηφει Κελλου Νεφ Στιλκας Έδριφει Λαφρενσι



Σελφ Αικεν Δοηφει Τρωιλλ Αδωφει Βρηθεν Λορινγ Παμμιλλ



Βριουσι Δημιξ Κοηφει Τηυλοσ Άλτοφ Άλε Άλε Άρσιου



Χαυερσον Βυρνετσε Πριουσ Ελλησι Δυε'αρ Βροτσην Δουλοτ Τηυλοσ

GREEK CLUB



KEYBOARD KLICKERS

SPONSORS—ERNESTINE GARNER, JOE BILL GILLESPIE

HONORARY MEMBERS—MISS ESSIE GRAVES, MISS MADGE WADE, MISS FLORENCE EVANS

OFFICERS

SETH THOMPSON *President* MAURINE LAY *Vice-President*
 JEWELL CARTER *Secretary* JAMES CRAIG *Treasurer* JEFF PEMBERTON *Reporter*

MEMBERS—Louis Gustavus, Lucille Boggs, Mary Sue Carter, Ray Owen, J. C. Smith, Nina Johnson, Doris Michel, Ralph Mann, Harold Leeton, Martha Jean Meador, Mary Lowe, Max Braswell, Walter Brandon, Reba Hicks, Robbie Haygood, Virginia Orr, Joe Lippard, Corinne Brashears, Claudine Edwards, Cecile Edwards, Wilson Irby, Clarke Mosely, Vera Mae Martin, Naomi Fowler, Dorothy Loftis, Elaine Millsapps, Louise Hope, Jo Wilson, Felts Rector, Arnold Hall, Louise Chambers, Melba Ashmore, Mary Ann Faulkner, W. E. Dee Shong, Tille Westfall, Ernestine Taylor, Aline Stevenson, Paul Power, Joe Arnette, Dell Dobbins, Louise Cox, James Kincannon, Cecil Gammill, Mrs. Cecil Gammill, Louise Baynham, Gordon Ratcliff.



B. S. U. COUNCIL

JAMES TULL	President	HELEN HOLLAND	Methodist Representative
MARY ELIZABETH HALL	First Vice-President	ECIL DOUTHITT	Honorary Member
STERLING ABERNATHY	First Vice-President	GEORGE JERNIGAN	B. Y. P. U. Representative
JIMMIE D. BROCK	Second Vice-President	RALPH KELLER	Choirster
BRUCE W. LOWE	Third Vice-President	VIRGINIA TOMPKINS	S. S. Class Representative
MARGARET KIME	Third Vice-President	FRANCES McMILLAN	Presbyterian Representative
JOHNNIE STILES	Secretary	ARTHUR NEW	Ministerial Association Rep.
LUCILLE GALLOWAY	Treasurer	PEN LILE COMPERE	Y. W. A. Representative
WANDA GARY	Pianist	MRS. JAMES T. DRAPER	Min. Aux. Representative
ELAINE DIGBY	Honorary Member	PHILLIP BEST	B. Y. P. U. Representative

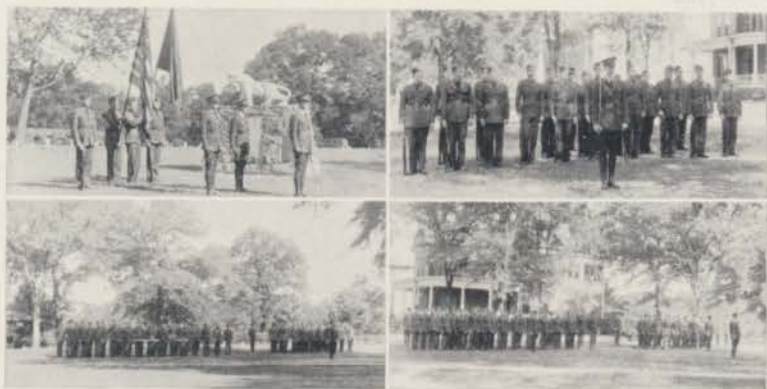


MAJOR LEWIS W. AMIS, U. S. A. COMMANDANT . . . *Professor Military Science and Tactics*

CAPTAIN F. D. ROSS, U. S. A. . . . *Professor Military Science and Tactics*

FIRST SERGEANT JOHN MAURER, D. E. M. L., U. S. A. . . . *Instructor in Military Science and Tactics*

R. O. T. C.



BATTALION STAFF AND LEADERS

THE BAND—COMPANY A—COMPANY B



DR. W. R. WHITE

**OUACHITA FLENNIKEN LECTURER FOR SCHOOL
YEAR OF 1934-'35.**

MARY RILEY FLENNIKEN

REV. JOHN BUCHANAN, D. D.

A good woman is the noblest work of God. The truth of this statement is demonstrated in the life and character of Mary Riley Flenniken. She was born in the state of Mississippi, but early in childhood she came with her parents to Arkansas. She attended the public schools of this state, Ouachita College and later graduated from Central College. After her graduation from college she was happily married to Mr. Alymer Flenniken, a brilliant young lawyer of El Dorado, who was a graduate of Ouachita. This young couple at once entered into the life and activities of the community and especially of the First Baptist Church, of El Dorado. Mr. Flenniken taught a class of young ladies and Mrs. Flenniken a class of young men in the Sunday School. These two classes often met in the Flenniken home for social hours. There are scores of strong men whose lives were enriched by her helpful and always interesting exposition of the Bible, who rise up today and call her blessed.

In these earlier years of her life she also had charge of the Sunbeam Band of the church. Every Sunday afternoon she would trudge through the dust or the mud to the church, (for there were no side-walks in El Dorado in those days) to give to these children a vision of the world and its needs.

Mr. Flenniken, perhaps with an uncanny foresight, had almost a mania for investing in land. At that time the lumber business was the chief industry of Southern Arkansas. The cut-over land was of little value for farming purposes, such land was very cheap. Mr. and Mrs. Flenniken acquired considerable acreage of this seemingly unproductive land. In 1921 when oil was discovered near El Dorado, the wisdom of these investments became apparent. Some of their holdings were in the heart of the oil fields. And as a result considerable wealth came into their hands. The acid test to one's Christianity often comes in the possession of great wealth. So often money becomes the master and not the servant of its owner. But not so with this devoted Christian couple. They accepted their wealth as a trust committed by God into their hands, and set themselves diligently and faithfully to the task of administering it as good stewards.

A few years after prosperity came, Mr. Flenniken was called to his eternal home. There was then left to Mrs. Flenniken the responsibility of administering the entire estate. Without ostentation and always with intelligence she invested her money for the glory of her Master. Promising boys and girls were given aid in securing an education. To every call that came from her church she responded with a wise liberality. Scores of individuals and families, facing financial crises, were rescued from impending doom by her quiet and intelligent counsel and assistance. The cry of the lost and needy world smote her heart, and through the organized channel of her denomination, and again and again individually and alone, she responded to this cry. In some instances she came to the relief of distressed situations without revealing her identity. There stands today in Europe a Baptist church whose building she made possible and she is known to that group as, "the unknown Christian sister". She sought always in her benevolence to please God rather than men, and studiously avoided giving to be seen of men.

As a memorial to her husband she established in 1927 the Flenniken Lectures in Ouachita College. This foundation brings each spring to the student body some outstanding Christian personality for a series of lectures.

For ten years she was the president of the W. M. U. of her church. Under her leadership this organization came to be recognized as the greatest W. M. U. in the Southern Baptist Convention. She was the most dynamic spirit in the great old First Church at El Dorado. Her counsel was sought by the pastor and its every organization. Her spirit in a marvelous way became the spirit of that church.

In the very prime of her life and usefulness she was stricken with a painful malady. The last three years of her life were years of excruciating and ceaseless suffering. With calm Christian fortitude she bore her pain. Never once did she question or complain. The strength and beauty of her Christlike character were never more strikingly manifested than during these days of her affliction. Calmly and unafraid she awaited the summons that brought sweet relief and release. How well she lived! How gloriously she died! Around the world the influence of her life has reached. Eternity alone will reveal the result of her well-spent days among the children of men.

QUACHITONIAN



HARP O' THE WINDS ~
Quachita Pecan Grove



BEECHES
Arkadelphia City Park



Silent Majesty

"MURMURING PINES"
Botanical Garden
"Awarded first place
in the Quachitonian
Snap-Shot Contest"



Lavine



-PEACE -



"DEEVERS AVENUE"
Botanical Garden



JUNGLE!

Trees, hills and rivers like these reproduced here await the student who has energy and love for the beautiful things God has placed on earth for men to enjoy. With no desire to be frite, the Editor would like to suggest that a tree is perhaps the crowning glory of all the plants on earth. We who have lived near the College and have been part of it know the value of our natural surroundings. We appreciate those who strive always to make our school a more beautiful place. We join our minds now to thank Professor Todd and his camera for preserving this page of Quachitas loveliness for us-forever!

Photographs by D.C. Todd, Quachita College.

Janet

CALENDAR OF EVENTS 1934-'35

- Sept. 11. Freshman Orientation—Such a bunch of "green timber" I've never seen!
- Sept. 12. Registration of over 450 and half of them Freshmen. Tsk!
- Sept. 13. Tsk! What fun!
- Sept. 17. Work actually begins. Not kiddin' here either.
- Sept. 18. Try outs for cheer leaders.
Such a noise—What monkey-shinns!
- Sept. 19. Oh, girls! How darling the little green "stocking-caps" are!
- Sept. 22. Ernestine left for Sophie-Newcomb. Too bad Jimmie Ole boy!
- Sept. 23. Just another supperless Sunday.
- Sept. 24. Dr. Grant, do you *really* mean "no hazing?"
- Sept. 27. Congratulations, Captain Mosely!
The "blues" beat the "whites" for the first game of the year.
- Sept. 28. Faculty reception. It rained but they had it!
- Oct. 3. Coach made a talk in chapel. Boys, are you really so dumb?
- Oct. 5. First Lyceum—Dr. Klyne, and he was plenty good.
Beat Texarkana 13-0!!!
Watch those Tigers go! Poor ole' Sammy.
- Oct. 8. A move inaugurated whereby students can read the entire New Testament in a year by reading a chapter daily.
- Oct. 11. Those Freshmen boys had another "Tea" party. (Self-inflicted). A big shoe scrap was the feature of the party. Ask 'em.
- Oct. 14. "Big Shot" stayed in Little Rock after the game Friday nite, supposedly for the week end. He was seen in Malvern today—My, Oh my!
- Oct. 17. Joe Bill and Mary Elizabeth were bride and groom today. Just in a play though in chapel!
- Oct. 19. Lost our first game—Clarksville 7-0. Best game ever seen. Those Tigers fought in spite of injuries.
- Oct. 22. Well Otto, how about it? Do we have that "pajama parade" or not? Dr. Grant sho' did look tough!!!
- Oct. 23. Marjorie Higgason got four dozen roses today from Waco Oh, you Hoyt! !
- Oct. 24. "Say, Philip . . . does Eunice scratch *ever thing* for you? *Everything?!!* —
- Oct. 26. Home coming!! Queen Mary Ellen reigns! Rowe-Jackson, and others, all here. Talks, parade, band concert, banquet, game, Hendrix—0, Ouachita—6!
Betty Sue, it must be great to have your way—regardless!
- Oct. 29. Hooray!! Ouachita gets a new library building—dedicated to Mrs. Blake. Today the "Buy a Brick Campaign" was started. Hope we sell those 75,000 bricks.
- Nov. 3. Man, Oh man! What a game!! Those Tigers held, the Gents 8-0 when we were doped to lose by 34 points. The score was really 2-0 but they gave Centenary the touchdown.
- Nov. 4. Everyone seems to be happy but tired. Some few are recuperating from "dampness" encountered in Shreveport.
- Nov. 9. Hooray! Tech 0—Ouachita 6! ! !
- Nov. 12. Louise England had permission from "mama" to go to Little Rock yesterday but "mama" came to visit her. Tough break, Louise!

CALENDAR OF EVENTS 1934-'35—(Continued)

Nov. 14. A BIG Freshman meeting conducted by Juniors-Seniors and Lettermen. A "warm" time was had by the Freshmen.

Nov. 15. The Freshmen are Freshmen today—and everyone was at pep meeting! Things look good now for the Tiger spirit.

Nov. 17. On to El Dorado! Had a good time on the Special Just ask D. S. and Clell McClure. Beat that L. S. U. bunch 7-0. I saw Dr. Grant with seven towels from Randolph Hotel ! ! ! ! My, Oh My! Oh, yes, about those towels . . . Dr. Grant merely collected them to send back to the Hotel.

Nov. 21. A Texas Rotarian spoke in chapel today in "PEP". Was surely good and very timely.

Nov. 23. Went to Monticello with non-lettermen. Zebe gave the home folks a thrill when he led the boys to a 57-0 victory for the Tigers.

Nov. 27. Everyone awoke today to see the town painted red by the Tigers . . . With white wash! Signs everywhere about beating that Reddie! Big Pep meeting at 6:30—Let's go Tigers!

Nov. 28. A beautiful day—the Tiger is established on his base—the greatest pep meeting in years is held with songs, yells, stunts, and talks. Queen Mary Elizabeth is crowned with maids attending. Bonfire and town pep meeting held. Let's Go Tigers ! ! !

Nov. 29. Thanksgiving—at sunrise—at chapel—at noon meal.

Rain, rain RAIN ! ! ! What a day. About 2000 saw the game in spite of rain—7-0 Tigers—Thanksgiving ! ! ! ! !

Dec. 2. John Floyd is made Captain of All-State Team. Elmo Chaney makes All-State half-back! Several others are mentioned with Leukin, Mosely, Williamson, making second team All-State. Which ends the season!

Dec. 4. Jimmie Landes is hanging around here for some reason. Any one know what it is? Bricks, I guess.

Dec. 11. The Rosoffs are still going fine!

Dec. 12. Too bad such notables as Mary Ellen, Faye, Louise, Jean, and Sue are spending the pre-holiday week so close to dear ole' Cone-Bottoms! Tsk! Tsk!

Dec. 13. Mosely is named Captain and Winburn sub-Captain of '35 team. Lettermen announced. Piano class Christmas party.

Dec. 14. Football Banquet at Chamber of Commerce. Lots of fun and lots of 25c spent on stories? The boys gave John a swell watch and coach a swell present too. A real good banquet!. Dramatic Club Christmas party.

"Death Takes a Holiday"—Elaine Braughton, for band benefit. Shore was scrumptuous.

Dec. 18. A Real Big Christmas Party—Santa Claus an' everything! More fun!!
HOLIDAYS.

Jan. 2. Dan Cupid strained a ligament during the holiday season. Jack and Charlotte, Joe B. Sullivan, "Old Folks" Rowland, Vera Mae Martin, and Miss Fisher! Gosh what a time he has had. Raymond Taylor and Margaret Raymond too!

Played Sun Life and beat them in a fast and furious game, 49-4!

Jan. 5. Say, Betty Sue, did you know "Zebe" played Post office during the holidays? Made money at it too!!

Jan. 9. Dr. Pettigrew asked Billy Tompkins what space was and as quick as a flash came the brilliant reply; "The absence of nothing." That's Sophomore stuff.



Mr. & Mrs. "Hot Dog"



McCaulley



B.S.U. Council



Winburn



So What!



"Conger"
FIRST PRESIDENT OF OUR CITY



Pappy & Don



JUST A COUPLE OF NEW
STUDENTS DRIVING UP TO
O.R.C.



JUST PADDLING THEIR
OWN CANOE



BULLDOGS
HUNTERS



At Ease!



BROTHER SULLIVAN
HELPS ERECT THE
TIGER



HOME ON THE "RANGE"



"Pore ole
Reddies"



EVERYONE'S
'LITTLE
SISTER'



All-State Chaney



HAULING OFF THE
RUBBISH



LITTLE STILES



DURGER
AND
DAVIS



EVERYONE'S
'LITTLE
SISTER'



HER SUNDAY
'BEIT'



SCHOOLBOY!



STRONG
ARM CARRS

CALENDAR OF EVENTS 1934-'35—(Continued)

Jan. 10. Another good ball game with Sun-Life but they won 42-38.

Jan. 11. Looks as if the Dramatic Club had a new member in Little Franklin O'Baugh. His performance in "Dregs" was really good!

Jan. 15. Lights were on early today—people were reading the Signal for the big news of the Who's Who! Surprised and pleased looks varied on the faces. Tigers beat American Bakers tonight—plenty.

Jan. 18. The Tigers *really* trimmed the Kroger team of Hot Springs . . . 55-19. Some game! "Old Folks" is *some* referee.

Jan. 21. Freezing cold. Brr! Snow on the ground—beautiful. And final exams—whew!

Jan. 22. What's this we hear of your visit to Dumas Xmas? Can you get your breath yet?

Jan. 26. Leuken and Cecille left for good today. Maybe someday they will come back. Hope so.

Jan. 30. Ralph Mann is worried to death about his semester grades. Had six classes, has five A's—and worrying about the other. Another A, I'd say.

Jan. 31. On to Monticello! Boll Weevils bit deep to take the game 39-35. Fast! Furious, Close! Almost went off and left Joe with M. Woodall.

Feb. 3. Eclipse today caused a severe strain on some necks. Some necks are strained every week-end????!

Feb. 7. Whoopee! Boy, ah boy! Yeoweeeeeeee!! We beat the champion Muleriders 59-44! What a game—What Tigers!

Feb. 8. The girls' hearts turned flip flops today because of a certain young man named Ritchie and his Baritone (tenor) singing friend, Mr. Ford.

Feb. 10. Say—Someone please enlighten the populace about this Captain Mosely-Geneva Adams affair. Sounds interesting!

Feb. 11. Another Warrior outfit was chewed to pieces tonight by ye ole tiger! We won 66-32 with Joe Strickland making 29 points! That's some record.

Feb. 14. Scrub team beat Kroger at Hot Springs 26-22.

Feb. 15. It is the little things in life that attract the most attention. Tonight's Lyceum, a Marionette show, was very entertaining and delightfully presented.

Feb. 16. Boy! Oh boy! How can I describe it! Exciting! Thrilling! Rip roaring all the way—was the Tiger victory over Monticello tonight! Score 53-46, which places us in the tournament competition.

Feb. 18. Finally! At last! The Tiger is finished! Base, name, plate and all! Right handsome it is too.

Feb. 19. O. B. C. lost a game to Texarkana tonight 48-47 after four men went out on fouls leaving four to finish the last ten minutes of play.

Feb. 20. Founder's Day—with a splendid broadcast from Hot Springs.

Feb. 21. Dr. Witherington proves to the world his prowess as magician-musical man and orator! What a man! And—Arnetta Herbert's splendid acting in Camille sets her down among Arkansas' best! Praise to her and the splendid supporting cast.

Feb. 22. Curses! Fooled again! Turned back by only one point the Tigers lost to Magnolia 63-62 in a heart breaking game down there.

Mar. 1. March came in like a lamb but—The Tigers came in like lambs also—let the Muleriders beat 'em 56-35! Too bad.

CALENDAR OF EVENTS 1934-'35—(Continued)

Mar. 4. Monticello continued to make the Tigers look like lambs by beating them 53-41. Come on Tigers—that's not our spirit.

Mar. 5. The Band and little Miss Calloway really did entertain in chapel today. Best program yet! The Tigers really looked their part this day! Beat Monticello in the return game 66-34. Boyeeeeee!

Mar. 7. Magnolia trimmed our sails today 53-43 and now we can begin track and baseball practice.

Mar. 9. Taylor Alexander ran into a door today and busted his glasses. What was it you were looking at, Taylor?

Mar. 10. Horrors! Mary Lowe walked right out of the dorm today and went to the show—during "quiet hour" too. Miss Blake begged her not to—but Mary went. What is this world coming to?

Mar. 11. These Loftis children are really going to town. They have two or three different dates nigh every day. Tsk! Tsk!

Mar. 12. Missing—one dozen "Red" shirts! Stolen last night from various rooms in the dorm. Today saw the capture, and trial of the hoodlums. Jimmy Kincannan and Hoyt Rowland were released after the jury was "hung".

Mar. 16. Cone, don't look so lonesome, she'll be back Sunday when Charlie brings her back from DeQueen! Or, maybe it's because Billy is gone?

Mar. 18. Chapel seats posted! Who sits by whom? Everything is alphabetical so who knows?

Mar. 19. Sing birdies sing! What a crowd in chapel to hear the Hot Springs Troubadours! Treble Cleff concert tonight—a real treat in grand style!

Mar. 20. Joe Strickland has "went". Traveled to New Orleans to try out for big league ball. We're for you "Strychnine"!

Mar. 22. The Faculty play before Ratory club today. Mr. Deevers makes a lovely villian.

Mar. 24. Becky Harrelson discloses the art of her beautiful blushing! Starts on the top of her head and "you follow it down", she says.

Mar. 25. Revival starts with Dr. Perry Webb of Pine Bluff leading. Promises to be a great week

Mar. 27. Measles! Measles! Everyone is getting them—has them—or has had them. Nice rosy ones too.

Mar. 28. The absent-minded professor has a protege! Harry Hall lit his cigarette with his lighter, blew out the lighter and threw it away into the bushes.

Mar. 30. Wm. Hall Preston makes a striking picture on any campus. Body, mind, soul, all in huge proportions. A welcome visitor.

Apr. 1. A. M. Lots of fun—Senior girls got theirs and The Faculty got theirs. The boys were given the usual sousing in the river.

P. M. Deepest gloom and sorrow. James Queen was snatched away into death while in the act of throwing a Senior in the river. He died of an acute heart attack.

Apr. 2. Gloom still prevades the campus—last words are said for James Queen in a chapel memorial service. Sadness is in every heart.

Apr. 3. Fern Garner made the Tennis team by way of J. Durham. They went to prayer meeting tonight too. Anything to be together.

CALENDAR OF EVENTS 1934-'35—(Continued)

Speaking of water—Dell Dobbins left her water running in her room and flooded the Dorm this afternoon.

Apr. 6. Paul Crandall and Tom Payne are back after a week in Hot Springs. Two girls' hearts will beat a little faster now.

Apr. 8. This day was climaxed by the brilliant Junior-Senior Banquet at the Kingsway in Ho. Springs. It was a big success and everyone had a swell time. Good "Spirit".

Apr. 9. Many hearts, especially Billy Mankins', turned a big flipflop in chapel today when Dr. Aday mentioned a scandal. Guilty conscience?

Apr. 10. The Ouachita Players won the State Little Theater Tournament cup today with "Submerged". Jack Yeager won first place in individual acting honors. Peterson third place. Miss Graves won second place as best directed play.

Apr. 11. Bruce Lowe, new B. S. U. President, succeeded in getting his new officers elected today. A fine group!

Apr. 12. Our first real track meet didn't turn out so hot. Tech's wonder Boys took us to the tune of 61-57.

Apr. 15. Dr. White arrives to deliver the Flenniken lectures.

Apr. 16. Jimmy Hobgood deserts little Mann to drive to L. R. at 2:30 A. M. to meet his dearly beloved—Ernestine, fresh home from Newcomb.

Apr. 17. Drs. Grice and White are holding large groups with their splendid lectures. This should prove to be a great week for Ouachita.

Apr. 18. Grant-Ouachita Day!

Apr. 20. Who's the guy who blew in and made Jack take a back seat over the McMillan way?

Apr. 23. Excitement prevails! Have they? Are they? Did they? What?!! Get married! Who? Wilford Harris and Francis Lowe! Oh my gosh!!

Apr. 26. We qualified 10 men in the prelims at Russellville today. Our chances look pretty slim for the title.

Apr. 27. Day of days!! We tied for first place with State Teachers and on the flip won the sweep-stakes cup! Feature sensations were Zebe Perry's first in the high jump, Cone's tie for first in the pole vault at 12 ft. 6 in. and Harris' victory in the mile over the famous Nelson of Jonesboro.

Apr. 29. Senior Military party and some with dates what really were dates! Amusing to see them parade down that line.

Apr. 30. A real hot-cha chapel program—Lucille Tillman has what it takes—to sing blues.

May 1. Elledge, Patterson, Mankin, Lippard, go gig-frogging. One says they got 13, one 14, and another 16. Makes me wonder if they got snake bit or sumpin! Probably sumpin!

May 6. Mr. Deevers wants to know how to find the "Pettigrew" of a horse!

May 17. Senior Day!!

May 25. Class Day and the 1935 Seniors near the end of the trial.

May 26. Baccalaureate, Dr. John D. Freeman, Nashville, Tenn. delivering the sermon.

May 27. The day of days for all! Commencement. Goodby Seniors!

May 29. Farewell to arms for most—Exams—and

May 30. Maybe goodbye to lots more.

May 31. All said and done.

OUR CHITONIAN



MISS VIRGINIA GIBSON

Most Beautiful



MISS MARY ELIZABETH HALL

Most Popular and Best All Round



MISS CECILE EDWARDS

Cutest



MISS MARY ELLEN LINDVALL

Football Queen

BOB UTLEY

Most Handsome



JOHN FLOYD

Best Athlete



BILLY MANKIN

Most Popular

JAMES TULL

Best All Round

ATHLETICS





COACH WALTON



LYNWOOD (SCHOOLBOY) ROWE

COACH WILLIAM I. (Bill) WALTON

By LYNWOOD (Schoolboy) ROWE

William I. (Bill) Walton to most people, is just coach of Ouachita College, but to me he is far more than just a teacher of football.

"Little Bill" has been my "big brother", coach, friend and general adviser. He is a "real guy" from any angle that you might want to approach the subject.

Our friendship dates back to my first year out for the football team at the El Dorado High School in 1929. We didn't "hit it off" so well right from the start, and it really began after an "understanding" following a short-lived row that might easily have terminated our companionship before it had a chance to get under way.

It all happened like this. I was down the field getting off some punts on my first day out for practice, coach called to me, and not quite understanding, I started to answer "yes" and at the same time "no". The coach thought I was getting back at him about something and promptly ordered me off the field, saying:

"Go turn in your suit and don't let me see you out here again if you have been used to playing baseball and having your own way, and I'm here to tell you that kind of stuff does not go on my football field."

The next day coach called me into his office and we talked things over. From then on everything was all right, but not yet has the coach come right out with an apology.

This little incident, I think, speaks in part for the success of Coach Walton. He is the "boss" on any football field where he takes charge. The boys soon learn this fact, and while Walton is not a hard taskmaster, he has a way of getting the best out of you and making you like it.

The coach probably never has been as "tough" as he would have you think when he is running through formations, but he is nevertheless convincing to say the least and gets results. The many friends he has among former football pupils speaks well for the manner in which he trains them.

Walton was born for football. The game to him is not just one short season each year. He lives football the year around. You only have to be around him a short time to discover this fact as his numerous friends will testify, and it is probably true that he also dreams now and then about new plays and the like. I have yet to see any one who could put more in their "work" than Coach Walton.

I owe my high school education largely to Coach Walton. He induced me to remain in school after I had already signed a baseball contract to join the Fort Smith Twins. He caught me when I was in the act of packing my suit case for the trip and arranged for me not to report by long distance telephone. It was his work in this connection that kept my contract on good standing and later enable me to report to the Beaumont team of the Texas League, a Detroit farm, from which I was sent to the Tigers.

Although we have come to the parting of the ways so to speak with my chief interest in baseball and Walton's in football, we are still mighty close friends and I still depend upon coach for his good advice.

Walton is like that. He makes many friends and keeps them. He is a "real guy" in the full sense of the word, and I think most of his friends will join me in the statement. He knows his football from A to Z and knows human nature along with it. Just as his high school and college teams have been "going places" Coach Walton is destined for bigger and better things in the football world.

FOOTBALL



"THE TRAIL OF THE TIGERS"



CHEER LEADERS

CHARLES HAGIN, MARY ELIZABETH HALL, BILLY MANKIN,
NELL VIRGINIA KINCANNON, JOHN DURHAM

FOOTBALL

"THE TRAIL OF THE TIGER"

Ouachita	13; Texarkana Jr. College	0
Ouachita	27; Arkansas State Teachers College	0
Ouachita	0; Ozarks	7
Ouachita	6; Hendrix	0
Ouachita	0; Centenary	8
Ouachita	6; Arkansas Tech	0
Ouachita	7; L. S. U., N. E. Center	0
Ouachita	57; Monticello	7
Ouachita	7; Henderson State Teachers College	0
—————		—————
Totals: Ouachita	123; Opponents	15



CLARENCE BELL—*Assistant Coach*

After four years as a stalwart Tiger, Bell was retained this year as assistant coach, and has demonstrated himself to be as proficient in coaching as he was in solidifying the Tiger line as a player. Bell was an All-State Tiger for two years, and as a fearless, aggressive, brainy lineman made an enviable contribution to the glory of Ouachita's football history.

TOMMY LESLIE—*Assistant Coach*

Tommy is another maker of history in Ouachita's athletic annals whom we were fortunate in being able to retain this year as assistant football coach. Tommy's 'galloping ghost' characteristics as a ball carrier, and his ability to make himself feel like a small ton of brick while blocking or tackling, made him one of the mainstays of the Tigers for four years, and enabled him to assist very materially in instilling the same characteristics into the Tigers backfield this year.

JOHN ROUNTREE—*Trainer*



MOSELY, *Guard* *Two Years*

Mosely is one of the best guards ever to wear a Tiger uniform. He is one of those steady, consistent players, whose work, though seldom spectacular, is always of the best. He will lead the Tigers of 1935.

GORUM, *Guard* *One Year*

Herbert comes to us from Norphlet. He proved his ability this year, and he should be a valuable man to the Tigers the next three years.

RICHARDS, *End* *One Year*

"Rich" is a Benton man, and like most Benton products, is worth his weight in gold on the gridiron. He has not yet reached the zenith of his powers. We're counting on him next year.

CHANEY, *Fullback* *Two Years*
(All-State '34)

"Modie" is one of the hardest tackles to back up a Ouachita line. He displays unusual spirit and determination in every play.

WINBURN, *Quarterback* *Three Years*

"Dolly" has worn the Tiger colors for three years. He is a "line-buster" on offense, and on defense he meets 'um in the gaps. We expect a great deal from Dolly next year.



MANN, *Halfback* *Three Years*

Ralph is one of the light weights on the team, but that does not effect the Tiger spirit in him. He is a shifty, fighting little halfback.

WHITE, *Halfback* *One Year*

Roy is that flashy grid general from El Dorado. In college he was in faster company but never failed to show up well. We will miss him in '35.

CHARLES VARNELL, *Tackle* *One Year*

"Charlie" was handicapped by being out of school a couple of years, but in the interval he lost none of those qualities that made him show up on the field. He is a real fighting Tiger.

GERALD VARNELL, *Halfback* *One Year*

Offensively and defensively an invaluable man. He is a real halfback that can be called on at any time.

BURKETT, *Guard* *One Year*

"Willie Clyde" was a "wheel-horse" this year. He was a stone wall on defense, and on offense he could be counted on any time. Watch him next year.



LUEKIN, *Quarterback* *Two Years*

With Norbet at quarter the team played very creditable ball, and showed much confidence under his direction. His loss will be keenly felt.

ALLBRIGHT, *Halfback* *One Year*

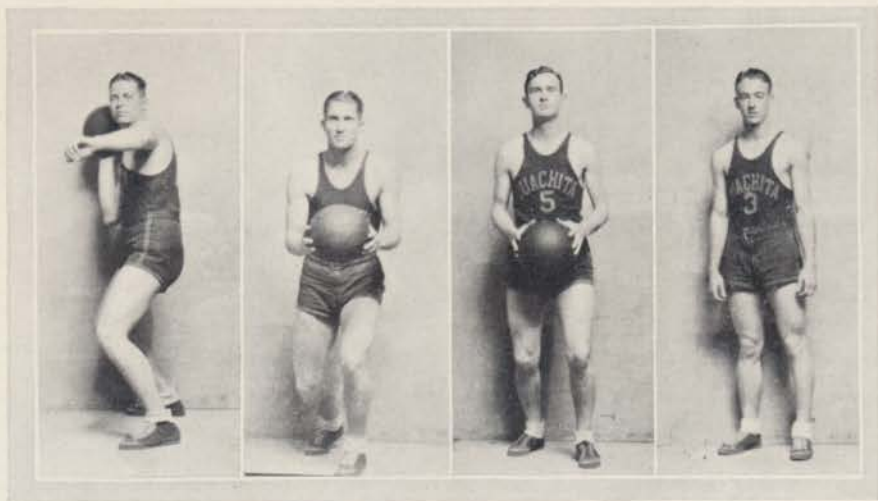
Gus is another of the years stars. He is one of the hardest fighting men on the squad, and has more suppressed spirit than fans ever dream of. He has another year.

BLACKWOOD, *Fullback* *One Year*

"Dewey" is one of the hardest hitting backs in the state. He developed much this year, and during the next two years we are expecting him to reach the full fruition of his splendid football capabilities.

PERRY, *Quarterback* *One Year*

"Zebe" was an invaluable asset to the Tigers this year—A "galloping ghost" when carrying the ball, a little ton of brick when making a tackle. He is also formidable as a punter, passer, and receiver, and displays a brainy gridiron generalship.



BASKETBALL

CAPTAIN JOE STRICKLAND

Joe has been the mainstay on the Tiger team for four years. He loves the game and knows it from start to finish. He was one of the highest scoring forwards in the state. His place will be hard to fill.

FRED STRICKLAND

Fred isn't particular about what position on the floor he shoots from, they all go through the basket. He plays a flashy brand of basketball against anybody's team.

PAUL AIKEN

Paul is the deceptive Texan. He is fast and hard to guard. His specialty is working the ball through a tight defense. He has another year.

RALPH MANN

Ralph is the "scrappiest" little guard that has been seen in several years. He is also one of the highest scoring guards in the state.



JOE ARNETT

Joe performs equally well at center and guard. With a little more experience he will make Ouachita an invaluable man.

SINCLAIR WINBURN

"Dolly" plays a consistent, and cool-headed game against all opponents. He has another year with the Tigers.

EUGENE SHORT

"Gene" came to Ouachita after playing several years of basketball on the Pacific coast. He has made us a valuable man, and we are expecting a great deal in the future!

1935 BASKETBALL RESULTS

Ouachita	53; Monticello	46
Ouachita	57; Bakers	41
Ouachita	47; Texarkana Jr. College	48
Ouachita	62; Magnolia	63
Ouachita	35; Monticello	39
Ouachita	59; Magnolia	44
Ouachita	66; Hendrix	32
Ouachita	52; Hendrix	30
Ouachita	35; Magnolia	56
Ouachita	43; Monticello	51
Ouachita	66; Monticello	34
Ouachita	45; Magnolia	53
—————		—————
Total	620	Total 537



TRACK

LESLIE *Four Years*

Four years Tommy has been running the dashes for Ouachita. This year he was handicapped by a knee injury, but he still made many points for the Tiger team.

HALSELL *Four Years*

Aubrey is the other man lost by graduation. His event was the pole vault. He made up for his small stature in fight and determination.

JOHN FLOYD *Three Years*

John is the ranking weight man on the team, having won first place in the shot put and discus. His state record of 144 feet in the discuss will stand for a number of years.

BURNEY WHITFIELD *Two Years*

Whitfield was the ranking hurdler and quarter miler. He will long be remembered for the anchor lap on the mile relay that gave Ouachita second place among fast company.

HUBERT CONE *Two Years*

Cone handles the vaulting pole as well as he twirls the drum major's baton. Watch him break the state record next year.

NOLAN CRAWFORD *Two Years*

"Brownie" runs the 440 like a veteran of the ranks. Never have we seen a prettier stride. He can always be expected to win points for the Ouachita team.

HARVEY ELLEDGE *Two Years*

"Preacher" is a javelin hurler of no mean ability. He should rank with the best with a little more experience.



TRACK

CLELL McCLURE *One Year*

Mac runs the hurdles and relays, and is also a high jumper. He can be counted on against the best of competition. Watch him go the next two years.

MODIE CHANEY *One Year*

Modie does the broad-jump and runs in the relays. He is a threat against the best of the state.

JIMMIE WATKINS *One Year*

Jimmie pole vaults and runs in the mile relay. In the pole vault he has good form and will make it tough for the best the next two years.

GERALD VARNELL *One Year*

Last year "Ace" was the high scorer in the state high school meet. This year he proved to be a valuable man. Watch him go the next three years.

SAMMY SEWELL *One Year*

This big boy from Prescott surprised every one with his ability to throw the javelin. He captured first honors in the state meet this year. He should be a record breaker next year.

ROY COOK *One Year*

Roy was another man of the famous Ouachita weight men. He bore his part of the burden in every event. His specialty is the javelin.

JIMMIE CRAIG *One Year*

Jimmie proved to us this year that he was a half miler of real ability. With a little more coaching he will be a record breaker.

WILFORD HARRIS *Two Years*

Wilford runs the mile in good fashion. He placed second in this event in the state meet. Watch him go the next two years.



OUR CHITONIAN

ADVERTISEMENTS

**NICK CARTER'S
MEN'S SHOP**

"The Home of College Boys"

—
Latest Styles in Everything for Young
Men at Popular Prices

**GEORGE A. GREEN
MOTOR COMPANY**

Sales FORD Service

PHONE 92 ARKADELPHIA

SLOAN'S DRUG STORE

TAYLOR'S—CANDIES—WHITMAN'S

*
*Our Fountain Service
The Best in Town*

PHONE 25 ARKADELPHIA

Compliments of

TOWNSEND HOSPITAL

ARKADELPHIA

**TOM G. CLARK
LUMBER CO.**

ALL KINDS OF BUILDING
MATERIAL

**STERLING'S
5c and 10c STORE**

—
Where Prices Reach Their Lowest
Level

—
MAIN STREET ARKADELPHIA

**BENTON CASSET
MANUFACTURING CO.**

Manufacturers of High Grade Coffins
And Caskets

FORDYCE, ARKANSAS

"We Aim to Please"

Compliments of

HOME BAKERY

610 Main Street

Phone 76 Arkadelphia

MITCHELL'S
5c and 10c STORE

ALL KINDS OF SCHOOL
SUPPLIES

MAIN STREET ARKADELPHIA

Compliments of
STUDENT'S PRESSING
SHOP

ONE DAY SERVICE

"Satisfaction Guaranteed"

OTTO WHITTINGTON
DALE WARD
Proprietors

The
CADDO DRY CLEANERS

Quality
Satisfaction
Service

PHONE 323 ARKADELPHIA

ROYAL THEATRE

Operated by
CECIL CUPP

For Your Entertainment

MAIN STREET ARKADELPHIA

WHIPPLES SANDWICH
SHOP

The Place for Good Eats and Drinks

ARKADELPHIA

Compliments of
BROADWAY DRUG CO.
AND
NEWBERRY MOTOR CO.

ARKADELPHIA

Compliments of
J. C. PENNY COMPANY
DEPARTMENT STORE

Phone 105 Arkadelphia

Compliments of
SCOTT & MEYERS

LITTLE ROCK ARKANSAS

J. T. LLOYD COMPANY

Little Rock, Arkansas

"Sporting Goods for Good Sports"

RUBE AND SCOTT, Inc.

The Home of Quality Clothes

For

Men and Young Men

A. G. Spaulding & Bros. Sporting Goods

LOGAN**GROCERY COMPANY**

Wholesalers

Phone 248 Arkadelphia

Compliments of

Ouachita Book Store

BOOKS — BIBLES — SUPPLIES

E. L. BREWSTER, Manager

"A OUACHITA BOOSTER"

COMPLIMENTS OF

GOVERNOR J. MARION FUTRELL

CHARLES PARKER—State Auditor

GEORGE W. NEAL—Commissioner of State Lands

C. E. JOHNSON—Chief Justice of Supreme Court

BASIL BAKER—Associate Justice of Supreme Court

TOM M. MEHAFFY—Associate Justice of Supreme Court

FRANK G. SMITH—Associate Justice of Supreme Court

TURNER BUTLER—Associate Justice of Supreme Court

J. L. McHANEY—Associate Justice of Supreme Court

T. H. HUMPHREYS—Associate Justice of Supreme Court

THE

1935

THE PICTURES USED IN THIS ANNUAL
WERE MADE BY

LEROY THOMPSON

THE STATE'S LEADING
PHOTOGRAPHERS

* *

SPECIALIST IN PORTRAIT WORK

* *

THANK YOU FOR YOUR LIBERAL PATRONAGE

* *

ARKADELPHIA, ARKANSAS

Arkansas'
Master
Engravers

PEERLESS ENGRAVING COMPANY
ARTISTS, PHOTO-ENGRAVERS



Little Rock, Arkansas

THE

1935

Manufacturers of
BLANK BOOKS, RECORD BOOKS, SPECIAL RULE FORMS

All Kinds
LOOSE LEAF BINDERS AND FORMS

Complete Line of
SCHOOL FORMS AND CLASS RECORD BOOKS
INVITATIONS, DIPLOMAS, ANNUALS

TELEPHONE 75

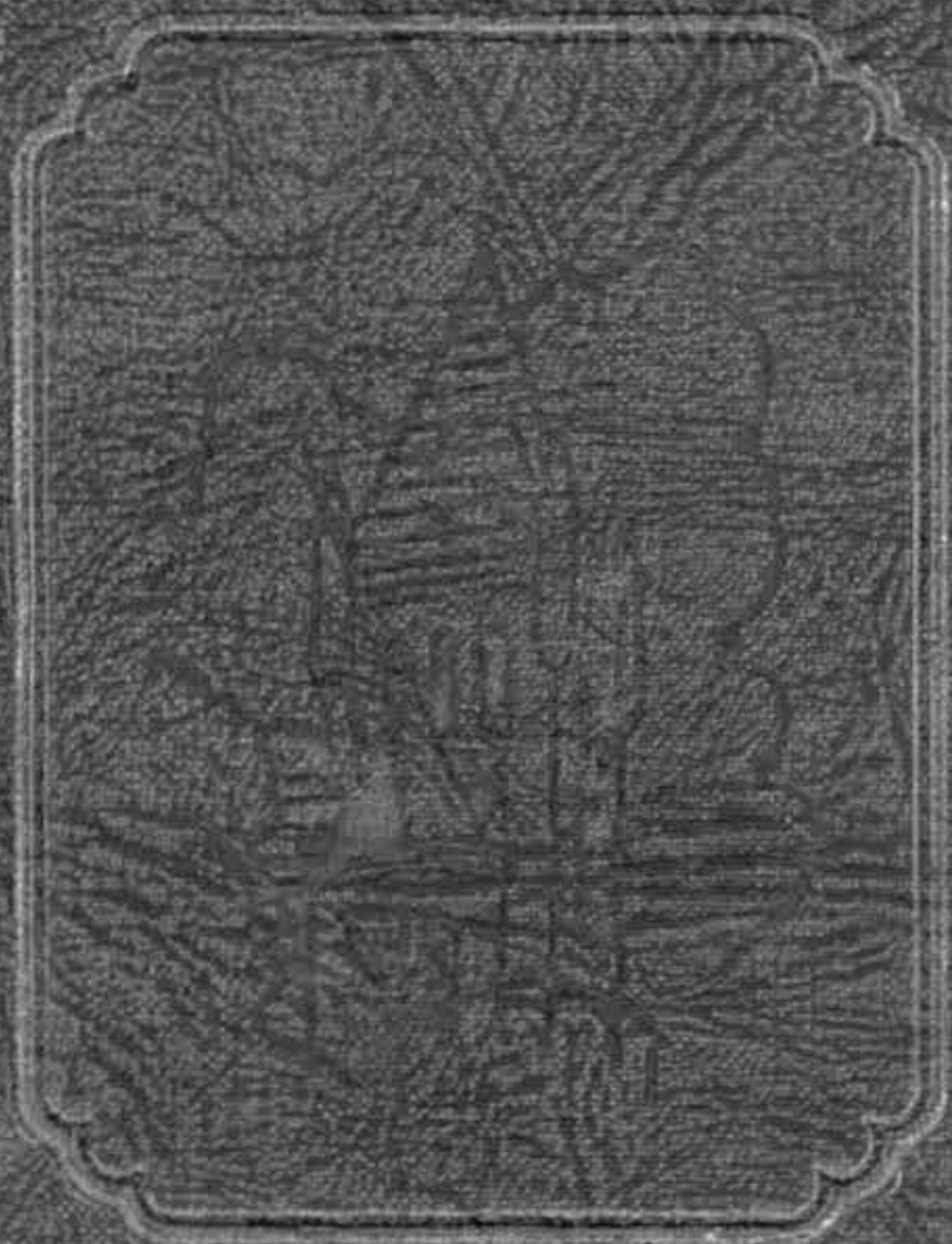
Russellville Printing Co.



CATALOG AND COM-
MERCIAL PRINTERS

Russellville, Arkansas.

YOUR INQUIRY ON ANY OF THE LINES WE MANUFACTURE
WILL BE APPRECIATED



058
ewlo

EX - LIBRIS

Ouachita College
Library

19511

