

Ouachita Baptist University

Scholarly Commons @ Ouachita

OBU Yearbooks: The Ouachitonian

University Archives

1940

The Ouachitonian 1940

Ouachitonian Staff

Ouachita Baptist University

Follow this and additional works at: <https://scholarlycommons.obu.edu/yearbooks>



Part of the [Higher Education Commons](#)

Recommended Citation

Ouachitonian Staff, "The Ouachitonian 1940" (1940). *OBU Yearbooks: The Ouachitonian*. 37.
<https://scholarlycommons.obu.edu/yearbooks/37>

This Book is brought to you for free and open access by the University Archives at Scholarly Commons @ Ouachita. It has been accepted for inclusion in OBU Yearbooks: The Ouachitonian by an authorized administrator of Scholarly Commons @ Ouachita. For more information, please contact mortensona@obu.edu.

1940

The Ouachitonian 1940

Ouachitonian Staff
Ouachita Baptist University

Follow this and additional works at: <https://scholarlycommons.obu.edu/yearbooks>



Part of the [Higher Education Commons](#)

Recommended Citation

Ouachitonian Staff, "The Ouachitonian 1940" (1940). *OBU Yearbooks: The Ouachitonian*. 37.
<https://scholarlycommons.obu.edu/yearbooks/37>

This Book is brought to you for free and open access by the University Archives at Scholarly Commons @ Ouachita. It has been accepted for inclusion in OBU Yearbooks: The Ouachitonian by an authorized administrator of Scholarly Commons @ Ouachita. For more information, please contact mortensona@obu.edu.

The

1940

OUACHITA

*Published by the Students of
Ouachita College*

Arkadelphia, Arkansas

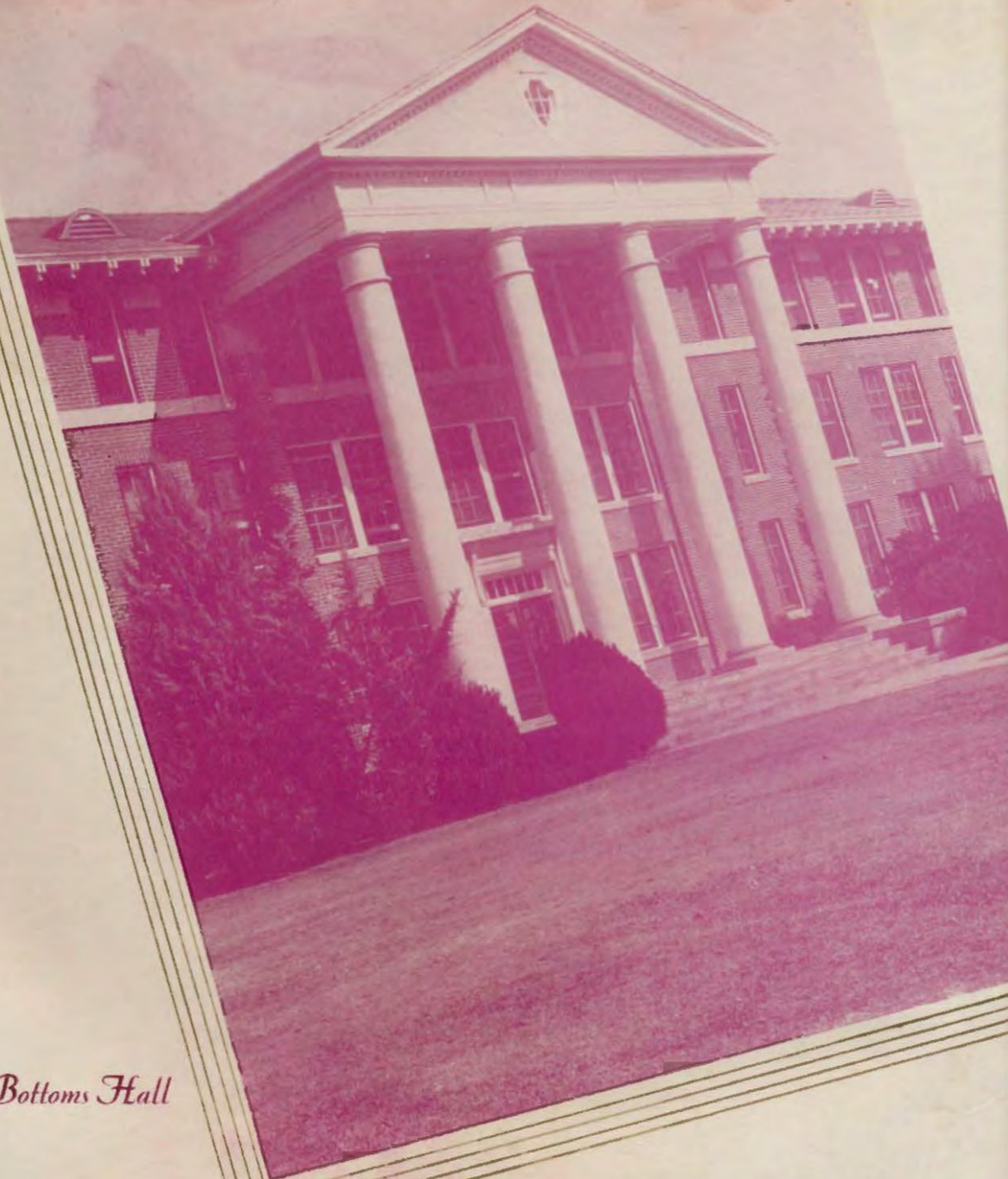
TONIAN



RILEY LIBRARY
ODACHITA BAPTIST UNIVERSITY

Copyright
1 4 0
Jeff Cone Editor
Owen Matlock
Bus. Mgr.





Cone Bottoms Hall

FOREWORD

With the avowed purpose of recording the Student year at Ouachita, the 1940 Ouachitonian has attempted to give a picture of College Life in which each may feel himself included. The complexity of activities of each student makes this undertaking a difficult one. Feeling that the Academic functions of the collegian are as integral a part of his life as his extra-curricular affairs, the Ouachitonian this year has endeavored to put an emphasis on this side of college life which we feel to have been neglected before.

WE HONOR

A true friend of Ouachita. One who has, in the past years, been ready to do anything to help a student of Ouachita. She has set before us an example of real friendship and patriotism to be followed by every student. She has always been ready to do her part in anything that would be beneficial to the school. Feeling that she has more than earned this honor, we hereby dedicate the 1940 Ouachitonian to a fine and noble lady.

Mrs. J. B. Meadors



C O N T E N T S

A D M I N I S T R A T I O N

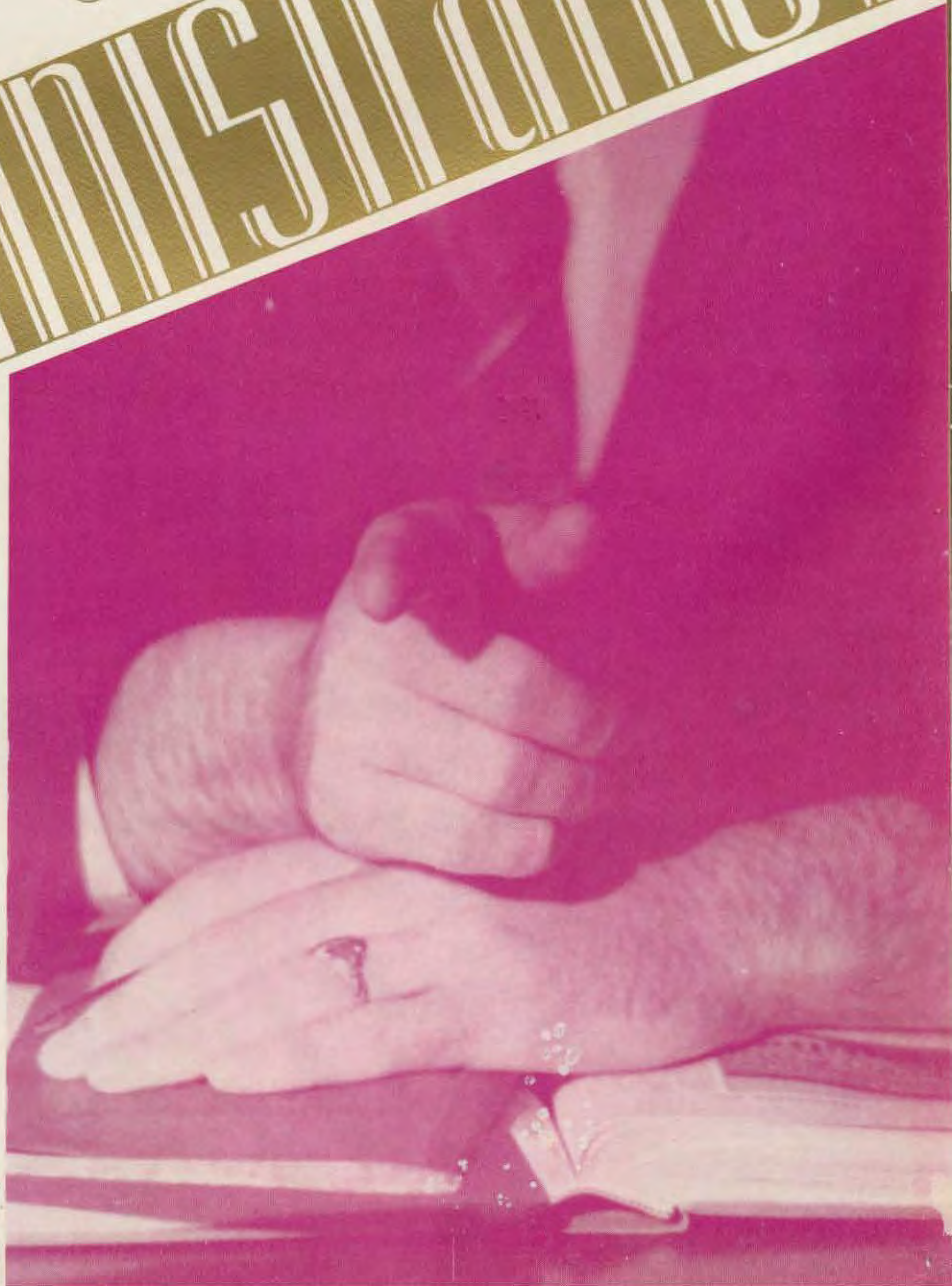
C L A S S E S

F E A T U R E S

A C T I V I T I E S

A T H L E T I C S

Administration





Dr. J. R. Grant
President



Since Dr. J. R. Grant started his program here at Ouachita, seven years ago, every phase of the College has had a phenomenal growth.

The enrollment has increased from 250 to 609.

The summer school enrollment has increased from 20 to 224.

The number of ministerial students has grown from 25 to 115.

The number of counties represented has increased from 40 to 66.

The number eating in the dining hall has increased from 50 to 375.

The number of Ph. D. members of the Faculty has increased from 2 to 10.

Five new brick buildings have nearly doubled the value of the college plant.

New science laboratories, new library room, and new equipment have added almost 100% to the efficiency.

The flower beds, the shrubbery, repair work, and pruning of trees have added much to the appearance of the campus.

The college debt has been reduced from \$165,000 in 1933 to \$70,000 in 1940.

Ouachita has been admitted to the Association of American Colleges.

Impartial judges have said that seldom, if ever, has any college made a greater record than this. When asked to give a reason for Ouachita's rapid growth, President Grant replied: "One student tells another and here another comes."

F A C U L T Y



J. R. GRANT . . . B. A., M. A., Ph. D.
President

R. C. PETTIGREW . . . B. A., M. A., Ph. D.
Professor of Language and Literature



ESTELLE McMILLAN BLAKE . B. A., M. A.
Associate Professor of Language and Literature

LIVINGSTON H. MITCHELL
*Director of the Conservatory
Professor of Piano*



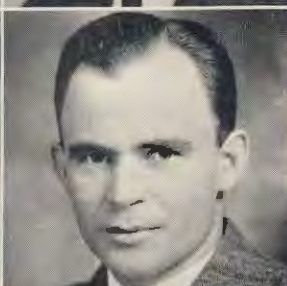
EVELYN BOWDEN B. A.
Assistant Professor of Piano and Theory

R. C. DAILY . . . B. A., M. A., Ph. D.
Professor of History and Political Science



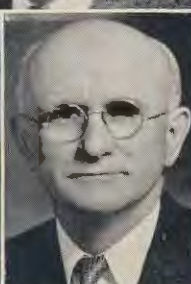
THOMAS H. JONES . . . B. A., M. A.
Assistant Professor of Political Science and Economics

O. W. YATES, B. A., Th. M., D. D., Ph. D.
Professor of Religious Education



W. I. WALTON B. A.
Director of Athletics

E. A. PROVINE . . . B. A., M. S., Ph. D.
Professor of Chemistry



K. DALE ARCHIBALD . . . B. A., M. A.
Professor of Biology

PATRICIA IRBY GUNN, BSS. H. E., M. S.
Professor of Home Economics

L. T. WALLACE . . . B. A., Th. M., Ph. D.
Assistant Professor of Religious Education

F A C U L T Y

LEONARD PRICE
Business Manager



WILLIAM SALYER . B. A., M. A., Ph. D.
*Associate Professor of Language
 and Literature*

D. H. ORROK . . . B. A., M. A., Ph. D.
Professor of Foreign Languages



J. J. WEBB
*Superintendent of Buildings and
 Grounds*

ALBERTA HARRINGTON B. A.
Associate of Language and Literature



MAJOR HARRY J. FARNAR . . U. S. A.
*Commandant
 Professor of Military Science
 and Tactics*

MAJOR JOHN P. LAKE . . . U. S. A.
*Associate Professor of Military Science
 and Tactics*



SGT. JOHN MAURER . . . Track Coach
*Property Custodian of Military
 Department*

E. L. BREWSTER
Book Store Manager



MRS. J. C. STEWART
Matron Men's Dormitory

MRS. C. S. WHITE
Nurse for Women



MRS. J. T. ESKRIDGE
Matron of Cone-Bottom Hall Annex

MRS. CHARLES PRICKETT
College Nurse

F A C U L T Y



A. M. WITHERINGTON, B. A., M. A., Ph. D.
*Professor of Education
 Dean of the Faculty*

MISS FRANCES CRAWFORD . B. A., M. A.
Registrar



ADELINE LEE B. S.
Instructor in Art

MISS LUCILLE SILLIMAN . . . B. S.
Assistant in Home Economics



DR. J. L. DORROH . B. A., M. A., Ph. D.
Professor of Mathematics

MRS. RUSSELL BARNETT . . . B. S.
Librarian



MRS. EARL PUDOLPH B. M.
*Director of Department of Speech
 Diploma in Expression*

MISS LELA ALLEN McMILLAN . B. A.
Assistant in Speech Department



MISS THELMA BATSON B. M.
Director of Voice

MRS. USHER ABEL B. M.
Assistant Professor of Violin



USHER ABEL B. M.
Director of Band and Professor of Violin

J. C. STEWART B. A., M. A.
Associate Professor of Education

DALE TAYLOR
Cashier

Classes







S E N I O R S

BOB EDWARDS	<i>President</i>
MARGUERITE GLOVER	<i>Vice-President</i>
ROSE LEE SANDERS	<i>Secretary</i>
L. M. KEELING	<i>Treasurer</i>

The O U A C H I T O N I A N



C L A S S

JANET ALLEN B. A.
Bradley, Ark.

"I am really serious."

Pres. Y. W. A.; Pi Kappa Delta; Pres. Alpha Psi Omega; English Honor Society; Pi Kappa Tau; Dramatic Club; Most Versatile Girl '40; E. E. E.; Ouachitonian Staff;; Ripples Staff; Debate Team; State Champion, winner of Gov. Brough Extemporaneous Award; Vice-Pres. Student Council; Winner Religious Poetry Reading.

HAZEL BARHAM B. A.
Cale, Ark.

"Soon I shall trade my school activities for household duties."

ADRIAN BLANKENSHIP B. A.
Portageville, Mo.

"Adversities never become stepping stones to me."

Ministerial Association; Life Service Band.

ANNIE NELL BONES B. A.
Gurdon, Ark.

"To me books are mere playthings."

Home Ec. Club.

BURNIE AMISON B. A.
El Dorado, Ark.

"He's a pilgrim on the path of least resistance."

Transfer from El Dorado Junior College.

J. T. BERRY B. A.
Bearden, Ark.

"I hardly find any person of good sense, save those who agree with me."

President International Relations club; Pres. Rifle Club; Red Shirts; Football; O Association; Basketball; All-State Basketball '40; Captain R. O. T. C.

CECILE BOCCELATO B. A.
Memphis, Tenn.

"Give me a chance and I'll vamp him yet."

Transfer from Arkansas State Teachers; Alpha Psi Omega; Signal Staff; Dramatic Club; Piano Class; Y. W. A.

MARGUERITE BOWERS B. A.
Little Rock, Ark.

"My heart is whole, my fancy free, Run along little boys, don't bother me."

Transfer from Little Rock Junior College; Editor of Ripples; Signal Staff; Y. W. A.; Champion Feature Writer; A. C. P. A., '39; Epsilon Omega Sigma.

The O U A C H I T O N I A N
The



C L A S S

JEANIE MOORE BURNS . . . B. A.
Hartford, Ark.

"As good a disposition as can be found."

Home Ec. Club.

FRANCES CONE B. A.
Eudora, Ark.

"You know I just say what I think."

Kewpie Klub; Piano Class; Cecilian Club; Football Maid '39; Junior Carnival Maid '39; Pep Squad; Ouachitonian Beauty '40; French Club.

MARGARET CRAWFORD . . . B. A.
Arkadelphia, Ark.

"They say she likes a football player."

Glee Club; T. K. L.

CLARENCE CUTRELL B. A.
Pine Bluff, Ark.

"When school and matrimony clash, matrimony wins."

President Ministerial Association; Life Service Band.

ALTA BESS BYRUM B. A.
Little Rock, Ark.

"Ambition is no cure for love."

Transfer from Little Rock Junior College; Choir; Trio; Cecelian Club; High Hats; Dramatic Club; Epsilon Psi Omega.

JEFF CONE B. A.
Wilmot, Ark.

"Grass fires stomped out reasonable."

President Freshman and Sophomore Classes; President Sigma Alpha Sigma; Band; Dramatic Club; Track; O Association; International Relations Club; Editor Ouachitonian '40; Signal Staff; Choir '36; Rifle Club; Lieutenant, R. O. T. C.

GAIL CROW B. A.
Tallulah, La.

"She attracts many eyes of the male race."

Transfer from Central College; Signal Staff; Choir; Trio; Phi Delta Sigma.

TAYLOR DANIEL B. A.
Arkadelphia, Ark.

"A genial gentleman characterized by quiet wit."

Transfer from Ark. A. & M. College; Ministerial Association.

The O U A C H I T O N I A N



C L A S S

OLIVE DENNEY B. M.
Malvern, Ark.

"Describe her, who can?"

Kewpie Klub; Cecilian Club; Girls' Pep Squad; Piano Class; Military Sponsor '38; Kewpie Klub Chief.

LUTHER DORSEY B. A.
Texarkana, Ark.

"When shall we look upon his likes again?"

Transfer from Texarkana Junior College; Ministerial Association; Life Service Band.

JEWELL GANN B. A.
Mansfield, Ark.

"It is good to live and learn."

Christian Leaders Association; Y. W. A. Council; Life Service Band; International Relations Club; Epsilon Sigma Omega; Phi Kappa Tau.

MARGUERITE GLOVER B. A.
Malvern, Ark.

"Caruso was a singer—so am I."

W. C. F.; High Flyer, W. C. F.; Home Ec. Club; Cecilian Club; President Cecilian Club; President Y. W. A.; Girls' Pep Squad; Ouachitonian Staff '38; Signal Staff '40; Piano Class; Student Council; Who's Who in American Colleges '40; Dramatic Club.

MARILU de YAMPERT B. A.
Lake Village, Ark.

Piano Class; B. S. U. Council.

BOB EDWARDS B. A.
Sulphur Springs, Ark.

"One boy in a thousand, with a thousand and one ideas."

President Senior Class; President Dramatic Club; President Rifle Club; Record Holder on Military Rifle Team; President International Relations Club; Pi Kappa Delta, degree of special distinction; Alpha Psi Omega; Most Versatile Boy '40; Who's Who in American Colleges; Captain R. O. T. C.; Pre-Law Club; State Champion in Oratory; Life Service Band; Choir Reader; B. S. U. Council.

DELBERT GARRETT B. A.
Prescott, Ark.

"I'm sure his life is happy."

Life Service Band; President Ministerial Association '40; B. S. U. Council.

IONE GRAY B. A.
Rison, Ark.

"Liked by all in general."

Transfer from Arkansas A. & M. College; Life Service Band.

The O U A C H I T O N I A N
The



C L A S S

MARCUS KAUFMAN B. A.
Little Rock, Ark.

"Surely I can furnish you with argument and intellect."

JOE LANGSTON B. A.
Little Rock, Ark.

"No opposition is too strong for this linesman."

Football; All-State Football '38-'39; President O Association; Rifle Club; German Club; Co-Captain Football '39; Vice-President Red Shirts; Pre-Med Club.

KYLE LAWRENCE B. A.
Memphis, Tenn.

"Just give me time, for I shall surely reach my goal."

Transfer from Miss. State; Dramatic Club; Life Service Band; Tennis Team; Coach Tennis Team; State Doubles Champion '39; Ripples Staff; President Ministerial Association.

TRUMAN LOLLAR B. A.
Fort Smith, Ark.

"His droll humor is thoroughly individual."

German Club; Band; Dramatic Club; Symphony Orchestra; Alpha Psi Omega.

L. M. KEELING, JR. B. S.
Little Rock, Ark.

"Here's to the girl in Womack Hall."

Science Club; Tennis Club; Chemistry Club; B. S. U. Council; Sigma Alpha Sigma; Treasurer Senior Class; Lieutenant, R. O. T. C.

HOUSTON LANIER B. A.
Texarkana, Ark.

*"To live as gently as I can,
To be, no matter where, a man."*

Transfer from Texarkana Junior Col-Dramatic Club; Pi Kappa Tau; Life Service Band.

MARY JO LILE B. A.
Arkadelphia, Ark.

"Ever looking for the opposite sex."

Ripples Staff; Epsilon Omega Sigma; Dramatic Club; Pi Kappa Tau; Life Service Band; Cecilian Club.

WILLIAM EARL MARTIN . . . B. A.
Hatti, Mo.

"I took all courses, including campusology."

Ministerial Association; Tennis Club; Rifle Club; Editor Freshman Handbook; Signal Staff; Lieutenant, R. O. T. C.

The OUAUCHITONIAN



C L A S S

T. O. MATLOCK B. S.
Arkadelphia, Ark.

"If I don't know a way I'll make one."

Football; Co-Captain Football '38; O Association; President Red Shirts; Math Honor Society; Captain, R. O. T. C.

MAYBELLE MEADOR B. A.
Arkadelphia, Ark.

"Woman is entitled to life, liberty and pursuit of men."

Math Honor Society; President T. K. L.; Epsilon Omega Sigma.

SARAH HELEN MEDLOCK . . B. A.
Arkadelphia, Ark.

"Far off her coming shows."

Home Ec. Club.

EUGENE MOORE B. A.
Benton, Ark.

"If all the world were at my feet I'd ask for more."

Ministerial Association.

LOUISE MORRIS B. A.
Cabot, Ark.

"I am not anyone in particular."

German Club; Treble Clef; Cecilian Club; Piano Class; Little Symphony; String Quartet; Choir; Girls' Quartet; Voice Class; Y. W. A.

BILLY MOWRY B. S.
Fort Smith, Ark.

"In woman I'll take youth, and seek for age in wine."

Math Honor Society; Lieutenant, R. O. T. C.

MARY McCAMMON B. A.
Arkadelphia, Ark.

"It is good to live and learn."

Transfer from Central College; Life Service Band; Epsilon Omega Sigma; Ripples Staff; Pi Kappa Tau.

ELIZABETH McKINLEY . . . B. A.
Hartford, Ark.

"A well 'Red' young woman."

Math Honor Society; Phi Sigma Delta.

The O U A C H I T O N I A N
The



C L A S S

RITCHIE MURPHY A. B.
El Dorado, Ark.

"God's gift to the common people."

Transfer from El Dorado Junior College.

FLOYD NEELEY B. S.
Carlsbad, N. M.

"Life without a girl is a bore—with one, a tragedy."

Chemistry Club; Math Honor Society; R. O. T. C., Second Lieutenant.

BENETTA NOLAN A. B.
Arkadelphia, Ark.

"The wise and active conquer difficulties."

FRANCES OVERSTREET B. S.
Fitzhugh, Ark.

"She is capable, humorous and quick witted."

Home Economics Club.

BILL PETTY A. B.
Little Rock, Ark.

"The world knows nothing of its great men."

Transfer from Arkansas A. & M.; Ministerial Association; Life Service Band; Christian Leaders Association.

WENDEL POWER B. S.
Nashville, Ark.

"He put his worries in a pocket with a hole in it."

Chemistry Club; Red Shirts; Lieutenant, R. O. T. C.

MARY LYNN PROTHRO A. B.
El Dorado, Ark.
Diploma in Speech

"Nice things are often done up in small packages."

Dramatic Club; Alpha Psi Omega; Hi Hat.

FRANCES ROGERS A. B.
Dumas, Ark.

"Her words speak louder than her actions."

Transfer from Central College.

The OUACHITONIAN



C L A S S

VIRGINIA ROWE B. M.
Nashville, Ark.

"Music hath charm to soothe the savage breast."

W. C. F.; Vice-President Piano Class; Y. W. A.

ELIZABETH SCARBOROUGH B. A.
Hot Springs, Ark.

"Really, I don't know what it's all about."

W. C. F.; German Club; Treble Clef; Dramatic Club; Signal Staff; Cecilian Club.

OTHAR SMITH B. A.
Rogers, Ark.

"Circumstances! I make circumstances."

Transfer from U. of A.; Ministerial Association; Life Service Band; English Honor Society; Business Manager Ripples; Who's Who Among American Colleges and Universities; Sigma Alpha Sigma.

MELITA STOKER B. A.
Ashdown, Ark.

"Even though I sometimes have my serious thoughts, I never take them seriously."

Math Honor Society; Science Club; Tennis Club; Phy. Ed. Club.

POSEY SANDERS B. A.
Forrest City, Ark.

"I wasn't raised in a canebrake, but I'm crazy about my "Reed"."

President Piano Class; Vice-President Junior Class; W. C. F.; Choir Accompanist; Pi Kappa Tau; Popular Orchestra.

BILL SIMMONS B. S.
Little Rock, Ark.

"Education is almost as expensive as ignorance."

Math Honor Society; Chemistry Club.

LURLINE STEWART B. S.
Arkadelphia, Ark.

"If silence is golden, she is poverty stricken."

President Hi Hat Club; Dramatic Club; Drum Majorette; Home Ec. Club.

JACK SWAIM B. S.
Helena, Ark.

"It's better to wear out than to rust out."

Who's Who in American Colleges and Universities; Pi Kappa Tau; Vice-President Math Honor Society; Chemistry Club; Rifle Club; Chemistry Lab. Assistant; Debate Team; Cadet Major, R. O. T. C.

The O U A C H I T O N I A N
The



C L A S S

CALVIN THOMAS B. A.
Malvern, Ark.

"We won't be here long, so why grow impatient?"

International Relations Club; Pre-Law Club; Red Shirts.

SILBIE WALLIS B. A.
Harrison, Ark.

"From shoestrings to hatband a perfect gentleman."

Ministerial Association; Life Service Band.

EMMA JEAN WEBSTER . . . B. A.
Little Rock, Ark.

"As dependable as can be found."

Pep Squad; Life Service Band; President Home Ec. Club; B. S. U. Council; Y. W. A.; Choir; Cecilian Club.

MARY WRIGHT B. A.
Hazen, Ark.

"A good heart is better than all the heads in the world."

Choir; Girls' Student Council; Piano Class; Treble Cleff; Girls' Glee Club; French Honor Society; Dramatic Club; Signal Staff.

JAMES VANNOY B. A.
Hot Springs, Ark.

"There is nothing to be gained by worrying."

Basketball; O Association; International Relations Club; Red Shirts; Lieut. R. O. T. C.; Golf Team, State Champion, '38.

MARTHA NELL WARREN . . B. A.
Arkadelphia, Ark.

"If she doesn't know a way she will make one."

Treble Cleff; Glee Club; Choir; Dramatic Club; Math Honor Club; Art Club; Art Honor Society; Co-Art Editor of Ripples.

BILL WOODSON B. A.
Arkadelphia, Ark.

"Much could be said if we could only read his mind."

President Ministerial Association; Life Service Band.

W. L. YELDELL B. A.
Portland, Ark.

"Look what nature did for me."

Ministerial Association; Life Service Band; Christian Leaders Association; Dramatic Club.

FRANK TILLEY B. S.
St. Louis, Mo.

"Oppressed by two evils, classes and work."

Football; O Association; Sigma Alpha Sigma; President Junior Class; Dramatic Club; Lieut. R. O. T. C.; Alpha Psi Omega; Spanish Club.

I Shall Remember

I shall remember

(When springtime is over,

And I have gone out to a world that is new),

Jonquil-gold slopes,

Demure fields of clover,

Thrill of sweet violets—though early and few.

I shall remember

Spun ice on the river,

Tower pierced through a sliver of pale yellow moon,

Needle-like rain

When trees seem to shiver,

When dream time is sweet and dawn comes too soon.

I shall remember

Gold Ouachita Autumns,

Crackling leaves piled high for other leaves' briers,

As many things

When Springtime is over,

I shall remember sometimes through the years.

Marguerite Bowers.



J U N I O R S

FRANK REED	<i>President</i>
DELLA MAE HART	<i>Vice-President</i>
FRANCES OVERSTREET	<i>Secretary</i>
MOISE SELIGMAN	<i>Treasurer</i>

The O U A C H I T O N I A N



C L A S S

ROYAL ADAMS Paragould
 LE MOYNE ADKINS Shongaloo, La.
 FANNIE MAE AKERS Georgetown
 KEITH BABB Malvern
 BROOKSHER BANKS Fort Smith
 JAKE BAXTER DeWitt

 VIRGIL BENSON Pine Bluff
 MARIE BLANKENSHIP Portageville, Mo.
 JOYCE BROWN England
 VIRGINIA BRYANT Warren
 JANE LEE CARGILE Piggott
 HURLEY CARTER Warren

 LOUISE COATS Nashville
 JOE CREECY Wichita Falls, Tex.
 MARIE CRITTENDON Arkadelphia
 IDA NELLE DAILY Arkadelphia
 D. A. DALBY Arkadelphia
 IONA SUE DAVIS Arkadelphia

 MARY JANE DEAN Little Rock
 JOHN DEERING Pine Bluff
 OTIS DENNY Fayetteville
 EUGENE FERGUSON Forrest City
 CHARLES DUNCAN Waldron
 ORLANDO ELLIS Fordyce

 SARAH ERWIN Grady
 DELORES ESKRIDGE Arkadelphia
 MARY FARQUARSON Little Rock
 AINSLEE DULANEY Carthage, Mo.
 NORMAN FORSEE Bauxite
 J. A. FREEMAN Fort Smith

 OPAL GARRETT Sparkman
 LOWELL GIBBS Corning
 ED GILBERT Sparkman
 RICHARD GOODBAR Russellville
 WILLARD GOODWIN Bodcaw
 LOIS GRIEVER Harrison

 LOIS GRIMMETT Bauxite
 SEIBERT HALEY North Little Rock
 IRIS HALL Arkadelphia
 HARTFORD HARDIN Camden
 DELAMAE HART Bentonville
 LOUISE HEARNE Fordyce

 VIRGINIA HENDERSON DeWitt
 DORIS HICKMON Bradford
 CLARA LOU HOLLEN Arkadelphia
 EARNEST LEE HOLLOWAY Corning
 ROBERT HUGHES Glenwood
 CECIL HUMPHRIES Gurdon

The OUA CHITONIAN



C L A S S

CARL HUNNICUT Gurdon
 RUBY LEE JONES Pine Bluff
 IRENE LAND Judsonia
 JANE MARBURY Arkadelphia
 DALE McCOY Fort Smith
 MARY McCUITION El Dorado

WINSTON MIZELL Corning
 DOROTHY LEE MORELAND Tyroneza
 ELMER MORGAN Arkadelphia
 PAUL MEYERS Little Rock
 LOWELL NELSON Benton
 FRANK NORFLEET Des Arc

FRANCES OVERSTREET Fitzhugh
 DONAETHET PAYNE Jacksonsville
 ELIZABETH PENN Hot Springs
 FRANK PITTS Harrisburg
 ALLEN PROVINE Big Creek, Miss.
 VIOLET PRUITT Beebe

HOLLIS PURTLE Hope
 WALTER RAMSEY Buxite
 JOHN RAY Arkadelphia
 AUDRY REECER Norman
 FRANK REED Pine Bluff
 JESSE REED Dumas

MELVIN RICE Arkadelphia
 RUTH ROBINSON Little Rock
 MELVIN ROBERTS Arkadelphia
 JEWELL ROSE Texarkana
 CARMEN RUCKER Grand Saline, Tex.
 SALLY BETH RUDOLPH Arkadelphia

C. D. SALLEE Arkadelphia
 MOISE SELIGMAN Little Rock
 CONE STELL Warren
 MARY STEPHENSON Prescott
 ELIZABETH STEWART Fort Smith
 VIRGINIA STONE Biscoe

JOHN TALBOT El Dorado
 HARVEY THOMAS Curtis
 TEX THORNTON Pine Bluff
 FRANCES BENSON Pine Bluff
 MARCUS VAUGHN Bearden
 MARY SUE VICK Arkadelphia

SARA LOIS WARE El Dorado
 GILBERT WARD Mt. Vernon, Ill.
 FLOYD WHITTEN Arkadelphia
 BILL WINBURN Arkadelphia
 TULLAS WILLIAMS Lake Village
 ANN WOLLERMAN Pine Bluff



RAYMOND ELAM

*Out across the plains of eternity
A deep strong voice is calling me,
"Come home to rest," it seems to say,
For what is left at the dusk of day,
The heaven is silent, the earth is still.
This deep strong voice must have its will,
And though the weak will cringe before his call
I without fear will go greet my soul.*

Bill Richardson.



S O P H O M O R E S

JACK McHANEY	<i>President</i>
MARJORIE ALLEN	<i>Vice-President</i>
JANICE ROGERS	<i>Secretary</i>
BILL ABBOTT	<i>Treasurer</i>

The OUACHITONIAN



C L A S S

BILLY ABBOTT *Hampton*
 BARRELLE ADDIS *Van Buren*
 MARJORIE ALLEN *Bradley*
 SAMMY ASHCRAFT *Malvern*
 TRACY BARRETT *Green Forrest*

SARA ALICE BAYS *Pine Bluff*
 HAROLD BALDWIN *Hot Springs*
 FLORINE BAKER *Fort Smith*
 NEWELL BLAKELY *Gurdon*
 THELMA BLEIDT *North Little Rock*

FRANCES BOGGS *Rison*
 CHARLES BOWEN *Cherry Hill*
 HOLLAND BROWN *Benton*
 CAROLYN BURNS *Fort Smith*
 LOUISE BURNS *Magnolia*

MARTIN BURNS *Magnolia*
 MARGARET BURTON *Osceola*
 JOHN BURTON *Cross Roads*
 JACK CHITWOOD *Magazine*
 WILTON CHURCH *Pine Bluff*

HERMAN CONGER *Little Rock*
 ROLFE CORBET *North Little Rock*
 CAROLYN JANE CARPENTER *Arkadelphia*
 ALONZO COTTINGHAM *Arkadelphia*
 DELOIS CURRY *Smackover*

LAWRENCE COVINGTON *North Little Rock*
 HUGH DANIEL *Arkadelphia*
 JOE DANIEL *Grannis*
 WILSON DEESE *Beebe*
 LOGAN DAVIS *Fort Smith*

BETTY FRAME DAVIDSON *Tillar*
 ROYCE DORRIS *Dermott*
 RAYMOND EARLY *Fordyce*
 BILLY GILL EAST *Arkadelphia*
 RAYMOND ELAM *Texarkana*

MARY SUE ELLIFF *Clarksville*
 JUANITA ERWIN *Paraloma*
 J. D. FOSTER *Little Rock*
 ED FOWLER *Friendship*
 GRAHAM FOWLER *Friendship*

THE OUACHITONIAN



The

C L A S S

DOROTHY ELLEN FRAZIER *Russellville, Ky.*
 WILLYE GANN *Manstield*
 VIRGINIA GIBSON *Pine Bluff*
 DALE GLAZE *Arkadelphia*
 RUTH GOODWIN *Pine Bluff*

GLADYS GRAY *Pine Bluff*
 PERRY GRIFFIN *Gurdon*
 MARTHA HAIRSTON *Warren*
 J. C. HALSELL *Little Rock*
 BRENT HAMLIN *Malvern*

LAVINIA HANKINS *Pine Bluff*
 ED HARNESS *Arkadelphia*
 EVELYN HARDIN *Helena*
 MARGARET HARDGRAVE *Clarksville*
 HENRY HAWKINS *Atkins*

THOMAS HELMS *El Dorado*
 SARAH BETH HENDERSON *Marvell*
 MACK HOSSACK *Angola, Ind.*
 LILLIAN HOWINGTON *Pine Bluff*
 EARLE HUMBLE *Dyess*

AARON JACKS *Brinkley*
 HAZEL JAMISON *Stephens*
 GLADYS JENKINS *Fordyce*
 JAMES KELLY *Warren*
 I. M. KIBBEE *Arkadelphia*

ROBERT LANKIN *Champaign, Ill.*
 DALTON LEATH *Mayfield*
 SARABEL LEECH *Benton*
 J. L. LLOYD *Arkadelphia*
 JACK McHANEY *Smackover*

KATIE JEAN McGRAW *Star City*
 DOROTHEA MANOR *Little Rock*
 GWYNNE MASSEY *Hot Springs*
 LUDENA MARSH *Fort Smith*
 WALLACE MARKS *Bauxite*

ALBERTINE MEADOR *Texarkana*
 GERALDINE MEADOR *Texarkana*
 CHARLES MEEK *Earle*
 ALINE MEYERS *Ft. Worth, Tex.*
 FRIDA MILLSAPS *Arkadelphia*

The O U A C H I T O N I A N
The



C L A S S

MARY MONTGOMERY Warren
 ELMER MORGAN Arkadelphia
 FREDIENE MOSELY Brinkley
 JOHNNY MOWERY Fort Smith
 ERNEST MUSE Hot Springs

CHARLES NASH Sawson
 ED NEIL Wichita Falls, Tex.
 MARTHA NEWSOM Searcy
 SALLY NICHOLS Malvern
 KIRVEN NICHOLS Parkdale

EARL OLMSTEAD Heber Springs
 PRENTIS PARK Dalto
 RUSSELL PATE Russellville
 SARA LEE PREDDY Smackover
 JEAN PRINCE Forrest City

DEAN RAMSEY Bauxite
 BILL RICHARDSON Little Rock
 JANICE ROGERS Pine Bluff
 LAVERNE RUCKER Grand Saline, Tex.
 C. D. SALLEE Arkadelphia

LEON SHADDOX Harrison
 JOHN SHIPP El Dorado
 J. T. SUMMERS Arkadelphia
 ED SMITH Arkadelphia
 ADOLPHUS TURMAN Hot Springs

BILLY VESTAL Arkadelphia
 GENE VINES Greenwood
 MARTHA ZANE WAGGONER Judsonia
 EMILY WARE El Dorado
 WENDEL WATKINS Arkadelphia

ERMON WEBB Lawson
 PAULINE WEBB Stamps
 LOLA WEST Pine Bluff
 WILMA WHARTON Green Forest
 C. S. WHITE Little Rock

ONITA WILEY Arkadelphia
 CHARLES WILKINS Newport
 STANLEY WILLIAMSON Little Rock
 RUTH WILLIAMS Levy
 SALLEE WITT Little Rock



FRESHMEN

BILL ABERNATHY	<i>President</i>
MARGARET ROBINSON	<i>Vice-President</i>
NELL MONDY	<i>Secretary</i>
TOMMY HALSELL	<i>Treasurer</i>

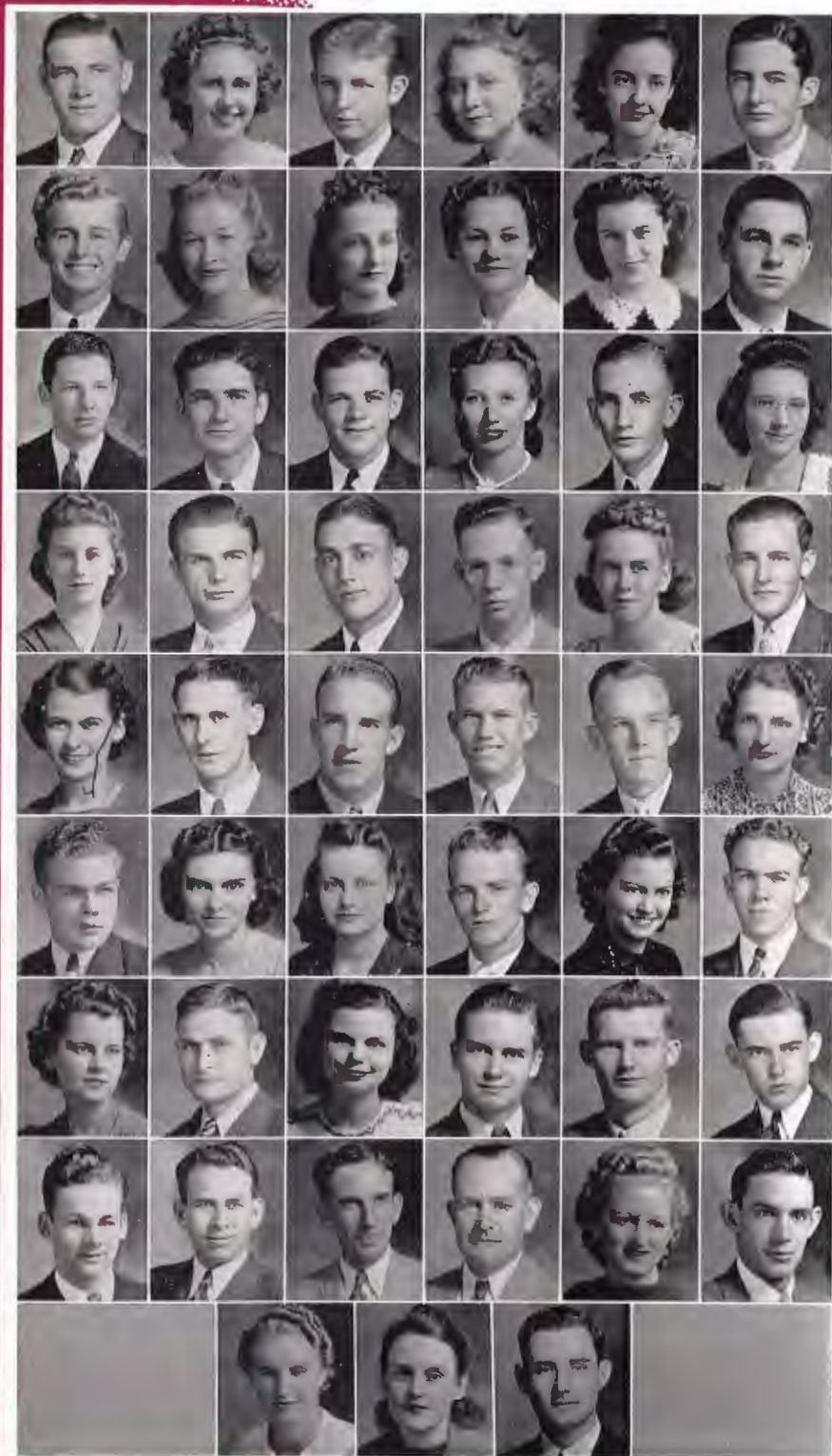
The O U A C H I T O N I A N



C L A S S

BILL ABERNATHY Fordyce
 IVY DEAN ADAMS El Dorado
 CLARENCE ADDIS Van Buren
 GERALDINE ADKINS Bradley
 GWYNN ADKINS Bradley
 RUDAY ADKINS Bradley
 CHARLOTTE ANN AGEЕ Ft. Worth, Tex.
 EVELYN ALLEN Arkadelphia
 WADE ARMSTRONG Hartford
 MARGARET BALDWIN Little Rock
 JOHN BARROW Ozan
 JIMMIE BEALS North Little Rock
 MARY ELLEN BEAUMONT Little Rock
 FRANK DAVID BENNETT Corning
 KARL BIRDSONG Shiloh
 RICHARD BISHOP Scotia, N. Y.
 R. L. BLACKWELL Pine Bluff
 LOUISE BRADBURY Mabievale
 RAY BRANSCUM Arkadelphia
 ORVIS BROOKS Hot Springs
 WANDA BROWN England
 MARY C. BRUNER Hope
 MABEL BRYANT Warren
 VIRGINIA CANNON Arkadelphia
 MARZEE ANN CANTRELL Jonesboro
 FLAVE CARPENTER Arkadelphia
 DICK CASH Little Rock
 HANNAH CHANDLER McGhee
 MARTHA LEE CLARK North Little Rock
 FRANK COCHRAN Bradley
 LOIS COOPER Benton
 BERTA SUE COPELAND Nashville
 BOB CRAIG McGhee
 BEVERLY CRAWFORD Arkadelphia
 VANCE CRAWFORD Schnectady, N. Y.
 O. G. CROOM Searcy
 MARVIN CULP Bearden
 DAVID CUNNINGHAM Arkadelphia
 MARY FRANCIS CUNNINGHAM Ft. Smith
 HUGH DANIELS Arkadelphia
 ALBERT DEMROD Pine Bluff
 EVELYN DeLOACH Heber Springs
 DOROTHY ANN DeWITT Hot Springs
 ESTER DIXON Bentonville
 BEATRICE DULANEY Carthage, Mo.
 CAROLYN DULANEY Earle
 FLORENCE DUNLOP Amity
 MARY ELLINGTON Little Rock
 MARY EXIE FERGUSON Biggers
 MARTHA FERGUSON Little Rock
 KATHERYNE FLANNAGIN Arkadelphia

The O U A C H I T O N I A N
The



C L A S S

JOHN FLEMING Benton
 WILMA SUE FURROW Ft. Smith
 J. J. FREEMAN Little Rock
 ELIZABETH GALLOWAY Stamps
 JEANETTE GARDINER Arkadelphia
 MYRON GIBSON Pine Bluff
 EDWARD GILBERT Sparkman
 PAULINE GLOVER Rison
 ETHYL GOODNER Oden
 LULA MAE GOODNER Cherry Hill
 HARRIET GRANT Arkadelphia
 ELMER GREVIER Harrison
 JOHNNIE HALL Arkadelphia
 ANDREW HALL Little Rock
 TOMMY HALSELL Little Rock
 GERALDINE HANSON Cotton Plant
 JERAL LEE HAMPTON Booneville
 MARIE HARDWICK Arkadelphia
 KATHERINE HARGIS Warren
 BILLY HARGIS Warren
 HINSLEY HARP Booneville
 ALBERT RAY HARRIS North Little Rock
 LILLIAN HARRIS Texarkana
 LAWSON HATFIELD Little Rock
 MARGARET HAYNES Pocahontas
 J. M. HOLDER Pine Bluff
 EDWARD HOLMES Fordyce
 GENE HOOVER Altheimer
 HORACE HUBBARD Arkadelphia
 JUDY HOUSEHOLDER North Little Rock
 BEN ED HILL Arkadelphia
 MARY ANN HEATH North Little Rock
 WILSILEE IRBY El Dorado
 LAWSON JACKS Brinkley
 MARGARET JACKS Sparkman
 NEIL JACKSON Atkins
 MILDRED JOHNS Chester
 CLARICE JOHNSON Osceola
 ELLEN JOHNSON Pine Bluff
 TOM JULIAN Siloam Springs
 EDWIN KEITH Arkadelphia
 THOMAS KEYS Arkadelphia
 HUGH KING Pangburn
 SAMUEL KING Arkadelphia
 LEON KIMMEL Pine Bluff
 R. L. LAURENCE Arkadelphia
 IVA JEAN LAURENCE Oden
 HENRY LAURENCE Salado
 LOUISE LAYTON Grannis
 MRS. DALTON LEATH
 WESLEY A. LINDSEY McCrory

The OUAACHITONIAN



C L A S S

WILLARD LLOYD Arkadelphia
 E. W. LLOYD Arkadelphia
 PHIL LOGAN Booneville
 DELBERT McATEE Paraloma
 LOIS McCANN Warren
 T. D. McCULLOCH North Little Rock
 HORACE McKIMMON Pine Bluff
 MOZELLE McMAHAM Arkadelphia
 NELL McMAHAM Truman
 ROBERT MARTIN Haiti, Mo.
 JULIA RUTH MASSEY Ft. Worth, Tex.
 DAN MATHEWS Little Rock
 LEO MATTOX Shawnee, Okla.
 HELEN MAYFIELD Eudora
 MARGARET MAYHUGH Pine Bluff
 DOROTHY MEADOR Arkadelphia
 JAMES MEDLEY North Little Rock
 LENOX MEDFORD Mena
 ESTALENE MELTON Arkadelphia
 CHESTER MILAM Little Rock
 BILL MILLSAPS Arkadelphia
 DOROTHY MILLSAPS Dennison, Tex.
 ANNE MITCHELL DeQueen
 H. D. MIXON Batesville
 WALTER MIZELL Corning
 NELL MONDAY Pocahontas
 VERNON MONTGOMERY Princeton
 ANNA MOORE Arkadelphia
 DAVID MOORE Benton
 PAT MOSLEY Osceola
 EVELYN MYERS Paragould
 OMER NORRIS North Little Rock
 NENO NOWLIN Arkadelphia
 BILLY NUTT Bearden
 MARY ELLEN O'CAIN Pine Bluff
 HERMAN ORR Arkadelphia
 DONALD ORR Hot Springs
 CARL OVERTON North Little Rock
 RAYMOND OWENS Little Rock
 PAULA PARKS Datto
 INA GRACE PARTAIN Blue Mountain
 EDNA PAUP Ann Arbor, Mich.
 LLOYD SPENCER PENN Hot Springs
 MARION PENN Hot Springs
 RAYMOND PEEPLES Arkadelphia
 HERBERT PHILLIPS Gould
 DORRIS PULLIG Waldo
 VIRGINIA QUEEN Hot Springs
 VIRGINIA RANDALL Little Rock
 INEZ REEVES North Little Rock
 VIRGINIA REYNOLDS Ft. Worth, Tex.

The OUACHITONIAN



C L A S S

ROSE MARY RHODES Arkadelphia
 MARGARET ROBINSON Brinkley
 JEFF ROUSSEAU Paragould
 FLOYD RYE Arkadelphia
 MRS. FLOYD RYE Arkadelphia
 MARILYN SANDERS Ft. Smith
 PAULINE SANDERS Memphis, Tenn.
 STEWART SANDERS Pine Bluff
 MARY SCHOOLEY Hope
 A. C. SHAW Arkadelphia
 GERTIE FAY SHELTON Arkadelphia
 DORIS SHIELDS Ft. Shields
 MILDRED SKINNER Lockesburg
 B. D. SMITH London
 DOROTHY SMITH Plainview
 FRED SMITH Helena
 GUSSIE MAE SPEAKS Rison
 ALLINE SPILLARDS Pine Bluff
 PHEBE JEAN STARK Hot Springs
 STANLEY STANFORD Arkadelphia
 HARLEY STELL Warren
 BONNELL STEWART Hot Springs
 JIMMIE LEE STEWART Arkadelphia
 RALPH STOCKEMER, JR. El Dorado
 MARGARET STEWART Little Rock
 LILLIAN SWAIM England
 LOTTIE MAE SWANEY Hot Springs
 BALLARD THOMAS Piggott
 WANDA THOMAS Plainview
 DOROTHY THOMPSON Arkadelphia
 MARY TOLSON Osceola
 VANITA VAUGHT Pine Bluff
 JACK VESTAL Arkadelphia
 RICHARD VESTAL Stuttgart
 EDWARD WALKER Viola
 JEAN WALLIS Arkadelphia
 WAYNE WARD Piggott
 WALTER WATTS Arkadelphia
 INEZ WEBB Batesville
 VIRGINIA WEBSTER Little Rock
 JOHN WHITLOW Arkadelphia
 JESSIE MAE WHITTMORE DeQueen
 JOHN WHITTLE North Little Rock
 TULLAS WILLIAMS Lake Village
 GUY WILSON Little Rock
 FERN WINFORD Colteyville, Kans.
 TOM WOODS Arkadelphia
 NOLAN WRIGHT North Little Rock
 JESSE YEAGER Bearden
 DORMAN YOUNG Gurdon
 MARJORIE YOUNG Texarkana
 DOROTHY ZIMMERMANN Phoenix, Ariz.



KATHERINE FLANNIGAN

*This thin, black curtain
That softly dropped between us here
The name of Death
Is still and chilling—
Something we cannot touch brings fear.*

*Grief is not fit
Though one is lonely,
We cannot fetter souls with care.
A step ahead
You moved the curtain
And happy, go adventuring there.*

Margaret Bowers

Features





We are indebted to Mr. Tyrone Power of Twentieth Century-Fox Studios, Hollywood, Calif., for the selection of the Beauties in the 1940 Ouachitonian.

~~XXXX~~

December 15, 1939

Mr. Jeff Cone,
Ouachita College,
Arkadelphia, Ark.

Dear Mr. Cone:

Your letter and the photographs have just reached me this morning and I have made my selection from them. I have marked my first and second choice of beauties on the backs of their pictures as you requested.

I know that Arkadelphia is renowned for its beautiful girls and it has certainly been a great pleasure and privilege to judge these pictures of the contestants.

One of my own photographs is being mailed with the other pictures separately and I hope they will reach you safely.

With best wishes to yourself and the student body of your College, I am

Sincerely,
Tyrone Power

TP/LS

Presenting

W H O ' S W H O

at

O U A C H I T A



ROSE LEE SANDERS
Most Collegiate Girl



CAROLYN JANE CARPENTER
Cutest Girl

JANET ALLEN—BOB EDWARDS
Most Versatile Girl and Boy





J. T. BERRY
Best Athlete



CHARLES HARRINGTON
Most Collegiate Boy

ROSE LEE SANDERS—FRANK REED
Most Popular Girl and Boy





Miss Evelyn Allen
First Choice of Mr. Power



Miss Marjorie Allen

Second Choice of Mr. Power

MISS SARAH LEE PREDDY

Beauty



MISS FRANCES CONE

Beauty

MISS ALTA BESS BYRUM

Beauty



MISS MARY STEPHENSON

Beauty



Miss Neno Nowlin
Junior Carnival Queen

Presenting

CAMPUS LIFE

at

O U A C H I T A



Dulaney and his baby . . . Some More Gay Dogs . . . Hello Thar . . . Pep meeting up town . . . Haynes and his public address, (then old goodlys) . . . A car load of TIGERS on the way to Tech . . . Is that the best you can do, Bess? . . . Getting that old scrouge Penn gives Reed a workout . . . Red Shirt Picnic, who you looking for Harvey? . . . Ouachita we sing thy praises . . . Calling CQ, CQ, somebody shot down my aerial I do believe . . . Studying hard . . . Harvey and Charley got to Tech in spite of everything else . . . Gabby, Tex, Jake . . . "Hairless Joe, Earthquake McGoon or Two Ton Tiny Neil." Nice Sadie Hawkins Day we didn't have.

"The Imaginary Invalid" . . . Those Freshmen are still at it . . . Pledge Penn gets one on the button . . . Campus scene . . . Herman you better not let Marjorie see this page . . . Sigma Alpha Sigma . . . Two little freshmen going to their first class . . . Dinner time on Sunday . . . Fish Pond, Fountain, Ducking Hole . . . Anything.





Old Main . . . Another concert, Olive you really look interested . . . Staff photographer Grevier doing his home work . . . Editor and Business Manager at work . . . What's that on your right, Ellis? . . . Mrs. Virgil Benson and husband . . . 'Gunga Din' Edwards . . . Football Queens and Maids . . . Why Boozie . . . Martyrs to Science . . . On the way to school . . . L. S. U., N. E. C. vs. O. B. C. . . . Brooksher and his Bleidt . . . What's so funny, Virginia?

Debaters at work . . . That's the cute little Skinner girl and escort . . . Sunning on the sun dial . . . In the Spring a young man's fancy turns to thoughts of love; right Smitty? . . . Claudius Cleveland . . . Look out you Kansas girls here comes that Tilley boy . . . Ferguson, the one-man band . . . Joe and Lavinia doing a little posing . . . Jane Lee is helping Frazier look for Birdie Nelson; Cone, East, and Mowry getting a fast start . . . Who said it was cold . . . McHaney, advertising for Aaron Slick . . . Four of a kind . . . Fight those Reddies . . . Pluto gives Tiny a few pointers.





Busy at work . . . Briar-Face Berry flirting again . . . Look out Tech, here comes Ouachita . . . Our business manager is just a little prankster at heart . . . Cone and Winburn studying for a test . . . The biggest eater in school . . . Button Freshmen . . . Does Hurley Carter play dominoes? . . . Egg-head Penn . . . Such grace you have, Ruth.

You recognize it as well as I do . . . Hardin showing off his new tooth, but Slim stole the show . . . Rosie and Janet . . . Hi Yo Silver! Whoa . . . Home Coming . . . Jake showing off his new football jacket . . . New Faculty Members . . . Winburn got crossed up . . . Teacher and pupil . . . Gillou . . . Gay Dogging . . . Betty Frame thought she was getting in a big picture . . . Phi Delta Sigma Banquet.





That's the Yankee . . . Kewpie Pledges . . . Janet . . . Kewpies . . . Some more of 'em . . . W. F. C. gals . . . What large feet you have grandma? . . . Mrs. Harvey Marsh isn't wasting any time, is she? . . . W. F. C. Pledges . . . E. E. E. Pledges . . . Whoo, Rosie . . . Just a couple of cute little girls.

Activities





Y. W. A. CABINET

MRS. E. M. BLAKE, *Sponsor*

OFFICERS

JANET ALLEN	<i>President</i>
LOUISE BURNS	<i>Vice-President</i>
LAVINIA HANKINS	<i>Secretary</i>
KATIE JEAN McGRAW	<i>Treasurer</i>
ALTA BESS BYRUM	<i>Chorister</i>
MARTHA HAIRSTON	<i>Reporter</i>
MARTHA ZANE WAGGONER	<i>Pianist</i>
JEWELL GANN	<i>Enlistment Chairman</i>
MARY LYNN PROTHRO	<i>Scrapbook Chairman</i>
HANNAH CHANDLER	<i>Librarian</i>
DORTHEA MANOR	<i>Mission Study Chairman</i>
WILMA WHARTON	<i>Personal Service Chairman</i>



RED SHIRTS

OFFICERS

T. O. MATLOCK	President
J. T. BERRY	Vice-President
JOE LANGSTON	Secretary-Treasurer
JACK McHANEY	Sergeant-at-Arms
CHARLES HARRINGTON	Reporter

MEMBERS

James Kelly	Bill Abernathy	Louis Jacks
Billy Hargis	Wendell Power	James Vannoy
Joe Creecy	Marcus Vaughn	Edward Neil
Gene Vines	Calvin Thomas	Walter Ramsay
Harvey Thomas	John Ray	Harold Baldwin
J. C. Halsell	Holland Brown	Lawrence Covington
Carmon Rucker	A. C. Shaw	J. T. McClain

The Red Shirts, a men's social organization, was founded in 1935. The purpose of the organization is to promote a better spirit of school loyalty, to encourage improvement in athletics, and to promote the general welfare in all matters pertaining to Ouachita College.

Members of the organization are distinguished each Wednesday by red shirts and white ties. Several pledges are taken into the organization at the first of each semester.

The Red Shirts give several social functions each year including a Founder's Day Banquet, which is usually held the first week in March.



SIGMA ALPHA SIGMA

OFFICERS

JEFF CONE	President
HERMAN HANKINS	Vice-President
MOISE SELIGMAN	Secretary
CHARLES HAYNES	Treasurer
HARTFORD HARDIN	Sergeant-at-Arms

MEMBERS

Frank Tilly	Frank Reed	Bill Winburn
Billy Vestal	L. M. Keeling	Billy Gill East
Bill Abbott	Virgil Benson	H. D. Mixon
Herbert Phillips	Sonny Carpenter	Lloyd Penn
Richard Rudolph	Johnny Hall	Brooksher Bank

The Sigma Alpha Sigma was organized in 1933.

Pledges are taken in three times a year, but the membership never exceeds twenty members.

A social organization instituted to promote good feeling and fellowship among the student body, establish precedents of scholastic achievement, good morals, clean living, leadership, and oppose the practice of undemocratic principles on the campus. Each member at all times endeavors to carry these principles within his mind and put them into practice so they may be both felt and seen. These things are in order to uphold the ideals and aspirations of Ouachita College.



HI HATS

MEMBERS

Frances Benson
Lurlene Stewart
Lavinia Hankins
Ruth Robinson

Mary Lynn Prothro
Sara Lee Preddy
Ann Mitchell
Jimmie Lee Stewart

Nancy Winburn
Pauline Glover
Margaret Robinson
Alta Bess Byrum

Small "high hats" worn at tip-tilted angles attract immediate attention to pledges of the Hi-Hat social club, which, though one of the youngest such organizations on the campus, is also among the most active.

Hi-Hat Club carries out its colors of black and white and its emblem, a "high hat," in sweaters which members wear on designated club days.

Organization activities include feasts and other informal and formal social functions which draw members closer together in congenial fellowship. The Hi-Hat girls are alert Ouachitonians who are among the most popular campus co-eds.



T H E 1 9 4 0

KEWPIE CLUB

OFFICERS

OLIVE DENNEY	Chief
FRANCES CONE	Soldier
MARY STEPHENSON	Baby
CAROLYN JANE CARPENTER	Secret
RUTH GOODWIN	Painter
MARTHA NEWSOM	Fireman
EMILY WARE	Flower
SARA LOIS WARE	Joy
FRANCES BOGGS	Carpenter
MARTHA FERGUSON	Gloom

Kewpie Klub, one of the oldest social organizations on the campus, had a most romantic beginning. On October 2, 1915, twelve charter members climbed quietly to the tower of the administration building where they held their first meeting.

Besides adding to the obvious glamor of the situation, secrecy was necessary because social clubs were, at that time, discouraged at Ouachita. The Kewpies continued to hold their meetings and feasts in secret until 1917, when social clubs were recognized on the campus.

Mrs. Flave Carpenter of Arkadelphia, a charter member, is, at the present, the club mother. Colors are green and white.



E. E. E.

MEMBERS

Janet Allen

Dorothy Ellen Frazier

Edna Paup

Lillian Howington

Marjorie Allen

Ellen Frances Johnson

Sara Alice Bays

Virginia Stone

Anyone who has spent much time on Ouachita campus, immediately thinks of E. E. E. social organization when he sees Mickey Mice. Because a "Mickey Mouse" is the emblem of this club whose colors are red and white.

E. E. E. club, like most other campus organizations, is tagged with nicknames, best-known of which is "Eight Enormous Eaters," partly so-called because membership is restricted to eight girls.

These eight must be congenial, broad-minded, possessed of high ideals, wholesome, trustworthy, and cheerful.

E. E. E. social club was organized in 1925, and in the years since, a variety of feasts and entertainments have been held under the sign of the Mickey Mouse.



T H E 1 9 4 0

W. C. F.

MEMBERS

Marguerite Glover

Rose Lee Sanders

Virginia Rowe

Elizabeth Scarborough

Jane Lee Cargile

Katie Jean McGraw

Wilma Wharton

Ludena Fitzgerald Marsh

Sara Beth Henderson

Katherine Hargis

When questioned too persistently as to what W. C. F. stands for, a member of this social organization is likely to answer, with a twinkle in her eye, that it means "we crave food!"

However, that may be, the club was organized in 1927, with social enjoyment and greater friendship among members as its objects. Colors chosen were blue and white.

Emblem of the organization is the airplane, and the W. C. F.'s presiding officer is designated as the "High Flyer."

For the past few years, each member has worn, on "W. C. F. Day" each week, a blue dress bearing the club insignia.



O U A C H I T O N I A N

PHI DELTA SIGMA

MEMBERS

Gail Crow	Carolyn Burns	Julia Ruth Massey
Elizabeth McKinley	Virginia Reynolds	Mary Frances Cunningha
Mary Cochran	Wanda Brown	Aline Myers
Joyce Brown	Jesse Mae Whitmore	Charlotte Ann Agee
Elizabeth Stewart	Fern Winford	

Newest social organization on the campus is the Phi Delta Sigma, which was founded in the fall of 1938, with the purpose of furthering friendship among members.

Club colors chosen were brown and gold, which are carried out in blouses worn by members on certain days. Emblem of the organization is a scabbard and blade.

Feasts, formals, and informal entertainments are features of the club's activity, and although Phi Delta Sigma is one of the youngest social clubs on the campus, it is also one of the liveliest.



T H E 1 9 4 0

T. K. L.

MEMBERS

Maybelle Meador	Virginia Cannon	Harriet Grant
Beverly Crawford	Evelyn Allen	Rose Mary Rhodes
Jean Wallis	Neno Nowlin	Katherine Flannagan
Margaret Crawford	Dorothy Meador	(deceased)

Because the club is composed solely of "Town Girls," T. K. L. is often often nick-named "Town's Kid League." Because the club emblem is a tea kettle, members are often called the "Tea Kettle Ladies."

Again, they're labeled "Ten Kute Ladies," for club membership is restricted to ten girls whose qualifications include "pleasing personality" and "Congeniality with the group." Organization colors are black and yellow.

Organized in 1935 for the purpose of promoting fellowship among town girls, T. K. L. had as charter members: Jimmy D. Brock, Dorothy Wright, Lelia Allen McMillan, Pauline Sturgis, Patty Whitten, Katherine North, Ruth Meador, Marjorie Meador, Katherine Jones, and Cherry Winburn.





Girls' Student Government

GIRLS' STUDENT GOVERNMENT

MARY WRIGHT	<i>President</i>
MARGARET GLOVER	<i>Vice-President</i>
JANET ALLEN	<i>Secretary</i>
ELIZABETH PENN	<i>Treasurer</i>
NELL MONDY	<i>Freshman Representative</i>
LOUISE BURNS	<i>Sophomore Representative</i>
CHRISTINA HARDY	<i>Senior Representative</i>
FANNIE MAE AKERS	<i>Junior Representative</i>

BOYS' QUARTET AND GIRLS' TRIO

DONALD ORR	<i>First Tenor</i>
C. S. WHITE	<i>Second Tenor</i>
WAYNE WARD	<i>Baritone</i>
LEON SHADDOX	<i>Bass</i>
BERTA SUE COPELAND	<i>Soprano</i>
DeLOIS CURRY	<i>Alto</i>
DOROTHY ANN DeWITT	<i>Contralto</i>

Boys' Quartet and Girls' Trio



Ripples Staff



RIPPLES STAFF

MARGUERITE BOWERS	Editor
LOWELL GIBBS	Associate Editor
DR. R. C. PETTIGREW	Faculty Advisor
OTHAR SMITH	Business Manager
MARY McCAMMON	Short Story Editor
KYLE LAWERENCE	Essay Editor
FRANK PITTS	Poetry
JANET ALLEN	Dramatic Editor
NORMAN FORSEE	Art Editor
RICHARD GOODBAR	Art Editor
MARY JO LILE	Staff Secretary
LOUISE BURNS	Staff Secretary
JOHN DEARING	Circulation Manager

ENGLISH HONOR SOCIETY

JANET ALLEN	GAIL CROW
MARY McCAMMON	IONE GRAY
VIRGINIA HENDERSON	ROYAL ADAMS
SARAH ERWIN	FANNIE MAE AKERS
LOWELL GIBBS	MARY LYNN PROTHRO
MARGUERITE BOWERS	ANN WOLLERMAN
WINTON MIZELL	DR. PETTIGREW
IRIS HALL	



English Honor Society

SIGNAL

STAFF

LOWELL GIBBS Editor
 HERMAN HANKINS . . . Business Manager
 H. D. MIXON Sports Editor
 DAVID MOORE Sports Editor
 BOB CRAIG Sports Editor
 CECILE BOCCELATO Society Editor
 HELEN MAYFIELD Feature Editor
 DOROTHY DeWITT Exchange Editor
 JOHN DEERING Columnist
 FRANK PITTS Columnist
 MARGUERITE BOWERS Columnist
 OMER NORRIS Typist
 JESSE YEAGER Typist
 JANET GARDINER Typist
 ELMER GREVIER Staff Photographer
 WILLIAM EARL MARTIN Reporter
 MARGARET GLOVER Reporter
 LOUISE BURNS Reporter
 MARTHA HAIRSTON Reporter
 ROYAL ADAMS Reporter
 BILL ABERNATHY Reporter
 ELIZABETH GALLOWAY Reporter
 HERMAN ORR Reporter
 MARY WRIGHT Reporter
 MARY JO LILE Reporter
 MOISE SELIGMAN Assistant Business Manager
 WALTER MIZELL Circulation Manager



OUACHITONIAN

STAFF

JEFF CONE Editor
 OWEN MATLOCK . . . Business Manager

LLOYD PENN Associate Editor
 SARA LOIS WARE Associate Editor
 MOISE SELIGMAN . . . Junior Class Editor
 SARA ALICE BAYS Make-up Editor
 ELMER GREVIER Photographer
 JOE LANGSTON, Associate Business Manager
 LAVINIA HANKINS . . . Circulation Editor
 JANET ALLEN Senior Editor
 ESTHER DIXON Secretary
 BILL ABBOTT Sophomore Editor
 LAWRENCE COVINGTON . . . Art Editor
 HELEN MAYFIELD Freshman Editor
 MARGUERITE BOWERS . . . Copy Editor
 A. C. SHAW Photographer



RIFLE CLUB

OFFICERS

MAJOR HARRY J. FARNER	Sponsor
MAJOR JOHN P. LAKE	Sponsor
J. T. BERRY	President
JACK SWAIM	Secretary

MEMBERS

Urban Holland	Frank Reed	Prentis Park
William Earl Martin	Carmon Rucker	Wendell Watkins
Jeff Cone	Moise Seligman	Bill Abernathy
Joe Langston	Jack Chitwood	O. G. Croom
Paul Bowlin	Jack McHaney	Bob Edwards
	Johnny Mowry	

The Rifle Club was organized in 1938. It is composed of men in the R. O. T. C. of the college. The qualifications necessary to become a member are, to be in high standing in the Military Department, have a rating of expert in Rifle Marksmanship, and pass by a majority vote of a selected quorum of the club.

The club has several social functions during the year, including an annual quail dinner, an all-day picnic, and many other types of entertainment.

The club was organized under the direction and supervision of Major's Farnar and Lake.



"O" ASSOCIATION

OFFICERS

JOE LANGSTON	President
J. T. BERRY	Vice-President
T. O. MATLOCK	Treasurer
FRANK REED	Secretary

MEMBERS

JOE LANGSTON	Football	JAKE BAXTER	Football
J. T. BERRY	Football-Basketball	JEFF CONE	Track
T. O. MATLOCK	Football	RALPH STOCKMER	Football
FRANK REED	Football-Basketball	ED HOLMES	Football
HARTFORD HARDIN	Football	JOE CREECY	Football
JACK McHANEY	Football-Basketball	LOWELL NELSON	Football
BILLY HARGIS	Football	VIRGIL BENSON	Football
BILL WINBURN	Football	WILSON DEESE	Basketball
ORLANDO ELLIS	Basketball	HINSLEY HARP	Football
TEX THORNTON	Football	BILLY GILL EAST	Track-Basketball
FRANK TILLY	Football	LEO WESTBROOK	Football
WALTER RAMSEY	Football	ED NEIL	Football
JAMES VANNOY	Basketball	WILLARD GOODWIN	Basketball
MARCUS KAUFMAN	Football		



CHEMISTRY CLUB

OFFICERS

FLOYD NEELEY	President
HARTFORD HARDIN	Vice-President
JOYCE BROWN	Secretary-Treasurer
JACK SWAIM	Chairman of Program Committee

MEMBERS

Urban Holland	Lowell Gibbs	Wilton Church	Nolan Wright
Bill Simmons	John Barrow	J. D. Foster	Wendell Watkins
L. M. Kee ing	Karl Birdsong	Aaron Jacks	Bill Abernathy
Leland Hall	Eli Gary	Bill Matthews	Barell Addis
Allan Provine	Walter Ramsey	Royce Dorris	Jimmy Beals
Charles Wilkins	Tracy Barret!	Kirven Nichols	Jack Rucker
Billy Vestal			Prentis Park

Ouachita's present Chemistry Club is a this year's revision of the old Science Club which became inactive two years ago. Purpose of the organization, which meets twice each month, is to stimulate interest "along the chemical line" and give one a broader view as to possibilities and fields of chemistry.

The new constitution states that members must have finished eight hours of chemistry with plans to become chemistry majors or minors. Until the required eight hours have been finished, anyone interested enough to attend three successive meetings may become an associate member.

The club has presented interesting and varied programs this year and is planning "big things" for the future.



International Relations Club

OFFICERS

DR. R. C. DAILY	Sponsor
PROFESSOR TOM JONES	Sponsor
ROYAL ADAMS	President
J. T. BERRY	Vice-President
JEWEL GANN	Secretary
CHRISTINA HARDY	Treasurer

MEMBERS

James Vannoy	Mrs. J. H. Crittenden	Lowell Nelson	Bill Winburn
Louis Jacks	Norman Forsee	Mary Jane Dean	Jeff Cone
Louise Hearne	Doris Hickmon	Cecil Humphries	Joe Creecy
Benetia Nolan	Calvin Thomas	Marcus Vaughn	Herman Hankins
J. W. Thornton	Opal Garrett	Iris Hall	Moise Seligman
	Ainslee Dulaney		

Ouachita College's International Relations Club is one of the world-wide organizations for peace which an endowment of Andrew Carnegie has made possible in colleges and universities everywhere.

Each branch club reports to the general organization, directed by President Nicholas Murray Butler of Columbia, once a year; and each branch club receives about \$50 worth of the latest books on international relations each semester.

The OBC club's monthly meetings are well-known on the campus for their attention to heaping plates as well as to interesting programs which end in round-table discussions on up-to-the-minute world events.



HOME ECONOMICS CLUB

OFFICERS

MRS. J. V. GUNN	Sponsor
MISS LUCILLE SILLIMAN	Sponsor
EMMA JEAN WEBSTER	President
ANNIE NELL BONES	Vice-President
JEANIE MOORE BURNS	Secretary
DELLA MAE HART	Treasurer

MEMBERS

Martha Ferguson	Frances Overstreet	Sara Beth Henderson	Wilsilee Irby
Dorothy Lee Moreland	Florence Dunlop	Judy Householder	Jessie Mae Whitmore
Lurline Stewart	Jewell Rose	Beatrice Dulaney	Lavinia Hankins
Katherine Hargis	Ruth Robinson	Paula Park	Ludena Fitzgerald Marsh
Wanda Thomas	Sammie Ashcraft	Geraldine Hanson	Sarah Helen Medlock
Nell Mondy	Irene Land	Dorothy Ann DeWitt	Margaret Stewart
Janice Rogers	Jane Lee Cargile	Dorothy Thompson	Marion Penn
Lois Cooper	Willye Gann	Carolyn Jane Carpenter	Julia Ruth Massey
Carolyn Burns	Lillian Mae Swaim	Geraldine Adkins	Margaret Baldwin
Helen Mayfield	Jimmie Lee Stewart	Mozelle McMahan	Margaret Hardgraves
Katie Jean McGraw	Harriet Grant	Virginia Webster	Carolyn Dulaney
Louise Coats	Gertie Fay Shelton	Frances Boggs	Jane Marbury
Sara Lois Ware	Virginia Reynolds	Deane Ramsey	Hazel Jamison
	Elizabeth Penn		



MATH HONOR SOCIETY

OFFICERS

DR. DORROH	Sponsor
BILLY MOWREY	President
JACK SWAIM	Vice-President
BILL SIMMONS	Treasurer
MAYBELLE MEADOR	Secretary

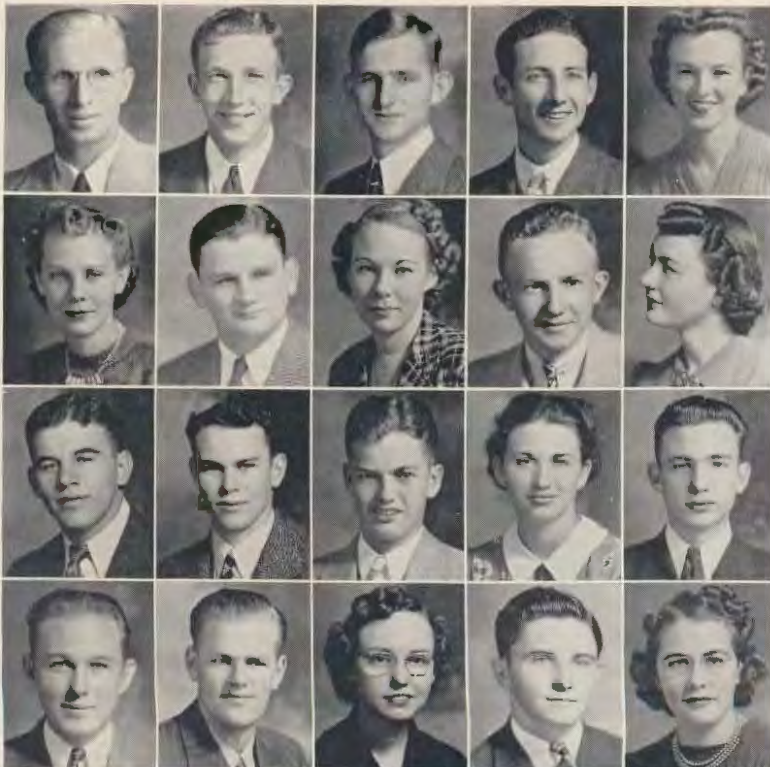
MEMBERS

Elizabeth McKinley	Marcus Kaufman	Floyd Neely
T. O. Matlock	Billy Vestal	Harford Hardin
Joyce Brown	Wendel Watkins	Sarabel Leech
Johnny Mowrey	Melita Stoker	Aaron Jacks
Martha Nell Warren	Lowell Gibbs	Sarah Erwin

Though the mention of Math often squelches "the timid soul," it seems to have a vast appeal for a number of Ouachitians those interested enough and, incidentally, possessed of knowledge enough, to become members of the Math Honor Society.

Objects of this organization, which meets once a month, are to provide interesting programs on Math and its related fields and its applications in other fields. Programs of meetings concern mathematics and its relationship to every-day life. Also included in Math Club activities are individual and entertaining social affairs.

Requirements for membership are fifteen quality credits in Math.



B. S. U. COUNCIL

CONE STELL	President
DOUATHET PAYNE	First Vice-President
GAIL CROW	Second Vice-President
DALE McCOY	Third Vice-President
MARY F. CUNNINGHAM	Secretary
IRIS HALL	Corresponding Secretary
CHARLES DUNCAN	Treasurer
STANLEY WILLIAMSON	Magazine
MARTIN BURNS	Chorister
JEAN PRINCE	Pianist
JACK McHANEY	Advertising
CLARA LOU HOLLEN	Representative (Second Baptist Church)
BOB EDWARDS	Sunday School Representative
IDA NELLE DAILY	B. T. U. Representative
EMMA JEAN WEBSTER	Y. W. A. Representative
LOUISE HEARNE	Ridgecrest Chairman
FRANK NORFLEET	Life Service Band
DELBERT GARRETT	Ministerial Association Representative
ANN WOLLERMAN	Student Secretary
MARILU de YAMPERT	Scrapbook Chairman
MRS. TAYLOR DANIEL	Ministerial Auxiliary Representative
DR. O. W. YATES	Sponsor



T H E 1 9 4 0

PIANO CLASS

OFFICERS

PROF. L. H. MITCHELL	Sponsor
ROSE LEE SANDERS	President
LOUISE MORRIS	Vice-President
FRANCES CONE	Secretary-Treasurer

MEMBERS

Olive Denny
 Emily Ware
 Virginia Rowe
 Ruth Goodman
 Ann Mitchell
 Mary Sue Eliff
 Clara Lou Hollen
 Virginia Henderson
 Margaret Haynes
 Ann Cullen Yates
 Richard Goodbar (Associate)
 Margaret Burton
 Russell Pate (Associate)

Jack Chitwood
 Betty Frame Davidson
 Virginia Bryant
 Ivy Dean Adams
 Virginia Gibson
 Jean Prince
 Margaret Jacks
 Bonnell Stewart
 Frances Benson
 Jean Wallis
 Gail Crow
 Dorothy Zimmerman
 Mary Wright

Cecile Barsolotta
 Marjorie Allen
 De Lois Curry
 Virginia Queen
 Delores Eskridge
 Dorothy Millsaps
 Martha Zane Waggoner
 Mable Bryant
 Thelma Bleidt
 Dorothy Ellen Frazier
 Wilma Wharton
 Allen Meyers
 Mary Sue Vick



CECILIAN CLUB

OFFICERS

MARGUERITE GLOVER	President
IDA NELLE DAILY	Vice-President
EMMA JEAN WEBSTER	Secretary
LOUISE MORRIS	Treasurer
JEAN PRINCE	Pianist
MISS THELMA BATSON	Sponsor

MEMBERS

Martha Nell Warren
 Anne Mitchell
 Neno Nowlin
 Mildred Skinner
 Evelyn DeLoach
 Phoebe Jean Stark
 Mary Ann Heath
 Virginia Webster
 Virginia Reynolds
 Olive Denny
 Emily Ware

Mary Sue Vick
 Martha Hairston
 Mary Frances Cunningham
 Joy Parrish
 Virginia Bryant
 Mabel Bryant
 Margaret Jacks
 Gertie Fay Shelton
 Wilma Wharton
 Marjorie Allen
 Dorothy Zimmerman
 Julia Ruth Massey

Elizabeth Scarborough
 Mory Wright
 Frances Cone
 Martha Newsom
 Ivy Dean Adams
 Rosemary Rhodes
 Virginia Cannon
 Nancy Winburn
 Virginia Gibson
 Iris Hall
 Fern Winford



Symphonic Orchestra Symphonic Band

USHER ABEL, *Director*

USHER ABEL, *Director*

Violins
 Mrs. Usher Abel
 Iona Sue Davis
 Chester Milan
 Aline Meyers
 Joy Parrish
 Louise Morris
Bass Fiddle
 Nell Mondy
Cornets
 Martin Burns
Drums
 Harold Baldwin
 Charles Wilkins
Bass
 Eugene Ferguson

Saxophone
 O. G. Croom
 Dick Cash
 Jimmy Beals
Altos
 John Dearing
 Herman Orr
Clarinets
 Earl Olmstead
 Stewart Sanders
Trombones
 Stanley Williamson
Accordion
 Elizabeth Galloway

Clarinets
 Earl Olmstead
 Virginia Henderson
 Lowell Gibbs
 Stewart Sanders
 O. G. Croom
 Nell Mondy
 Lawson Jacks
 Mrs. Usher Abel
 Joy Parrish
 Stanley Stanford
 H. D. Mixon
Drums
 Harold Baldwin
 Brooksher Banks
 Charles Harrington
 John Ship
 Dorman Young
Basses
 Eugene Ferguson
 Newell Blakely

Saxophones
 Dick Cash
 Elizabeth Galloway
 Jimmy Beals
 Gaston Shofner
Altos
 John Dearing
 Herman Orr
Trombones
 Stanley Williamson
 Myron Gibson
Cymbals
 Urban Holland
Cornets
 Wayne Ward
 John Rice
 John Mowrey
 Wendel Watkins
 Vance Crawford
Baritone
 Jack Chitwood



SYMPHONIC CHOIR

OFFICERS

EARNEST LEE HOLLOWAY Director
MISS THELMA BATSON Faculty Advisor
WAYNE E. WARD Business Manager

MEMBERS

Sopranos
Berta Sue Copeland
Evelyn DeLoach
Dorothy Ann DeWitt
Esther Dixon
Mary Ellington
Lois Griever
Margaret Haynes
Mary Ann Heath
Marjorie May
Mary Ellen O'Cain
Gertie Fay Shelton
Emma Jean Webster
Virginia Webster
Margaret Hardgrave

Bass
Bob Craig
Perry Griffin
T. D. McCulloch
Pat Mosley
Leon Shaddox
Wayne Ward
Carl Overton

Altos
Vanita Vaught
Janet Gardiner
Evelyn Meyers
Freida Millsapp
Sally Nichols
Douathet Payne
Doris June Shields
Mary Wright
Tenors
Frank David Bennett
Joe Daniels
Seibert Haley
Harley Stell
C. S. White



PHYSICAL EDUCATION CLUB

OFFICERS

MISS SARA THOMAS	Sponsor
LOIS GRIMMETT	President
MARY MONTGOMERY	Vice-President
BETTY FRAME DAVIDSON	Secretary-Treasurer
THELMA BLEIDT	Reporter

MEMBERS

Frances Boggs	Martha Lee Clark
Fern Winfred	Elizabeth Galloway
Carolyn Burns	Marjorie Young
Lois McCain	Martha Zane Waggoner
Jeannie M. Burns	Hannah Chandler
Sammie Ashcraft	Melita Stoker





OUACHITA PLAYERS

OFFICERS

BOB EDWARDS	President
ALTA BESS BYRUM	Vice-President
CHARLES HAYNES	Treasurer
FRANK TILLY	Business Manager
JANET ALLEN	Scrapbook

MEMBERS

Mrs. Earl Rudolph	Evelyn Allen	Newell Blakely	Sarah Erwin
Jack McHaney	J. J. Freeman	Gladys Jenkins	Earl Olmstead
Mary Stephenson	Mary Jo Lile	Frank Norfleet	Cecile Bocelatto
Marjorie Allen	Vance Crawford	Charlotte Anne Agee	Ann Wollerman
Brooksher Banks	Esther Dixon	Frank Pitts	John Deering





OUACHITA PLAYERS

OFFICERS

IDA NELL DAILY	Vice-President
JANE LEE CARGILE	Make-up
MARY LYNN PROTHRO	Secretary
LOUISE BURNS	Wardrobe
MARY MONTGOMERY	Reporter

MEMBERS

Mary Wright	Doris Hickmon	Kyle Lawrence	Clara Lou Hollen
Winton Mizell	Cone Stell	Marquerite Glover	Tommy Halsell
Virgil Benson	Lurlene Stewart	Neno Nowlin	Martho Nell Warren
Mildred Skinner	Margaret Robinson	Elizabeth Scarborough	Virginia Randall
Truman Lollar	Sally Beth Rudolph	Gail Crow	



ALPHA PSI OMEGA

OFFICERS

MRS. EARL RUDOLPH	Sponsor
MISS LELA ALLEN McMILLAN	Sponsor
CHARLES HAYNES	President
JANET ALLEN	Vice-President
BOB EDWARDS	Secretary-Treasurer

MEMBERS

Frank Tilley	John Deering	Truman Lollar
Alta Bess Byrum	Mary Lynn Prothro	Mary Montgomery
Sara Alice Bays	Virgil Benson	Louise Burns
	Cecile Boccolatto	

This organization is composed of Dramatic Honor Students. Each person, in order to become a member, must accumulate four hundred points. The points made through work done on plays, prompting, etc. After making the necessary four hundred points they are issued bids to become members.

The Alpha Psi Omega was started under the direction of Mrs. Earl Rudolph. Through her work in this department, better known as the Little Theatre Department, she has established one of the best Dramatic organizations in the State.



PI KAPPA DELTA

ARKANSAS BETA CHAPTER

BOB EDWARDS

Degree of Special Distinction; Vice-President Arkansas Beta; Tied for PKD National Debate Championship, 1938; Second in Union University Debate Tournament, 1939; State Champion Orator PKD Provincial, 1939.

JANET ALLEN

Degree of Honor; State Champion Women's Debater, 1936; State Champion Women's Debater, 1937; Second in Women's Debate Battle Royal, 1937; Tied for Second in Women's Debate PKD National, 1938.

ROYAL ADAMS

Degree of Honor; Second in Mixed Debate Battle Royal, 1939; First in Debate Kentucky Mid-Winter Tournament, 1940.

MARTHA HAIRSTON

Degree of Honor; Second in Mixed Debate Battle Royal, 1939; Second in Union University Debate Tournament, 1939.

WINTON MIZELL

Degree of Special Distinction; Treasurer Arkansas Beta; Second in Men's Debate in State, 1937.

DAVID MOORE

First in Debate Kentucky Mid-Winter Debate Tournament, 1940.

DORIS PULLIG

Degree of Fraternity; State Champion Women's "X" Debater.

CHARLES HAYNES

Degree of Fraternity.

DORIS HICKMON

Degree of Fraternity.

WADE ARMSTRONG

Degree of Fraternity.

DR. R. C. DAILY

Instructional Degree of Distinction; Coach of Debate, Arkansas Beta.

IDA NELL DAILY

Degree of Special Distinction; President, Arkansas Beta; State Champion Junior Women's Debate Millsap's Tournament, 1938; First in Women's Debate Millsap's Tournament, 1939.

LOUISE BURNS

Degree of Honor; State Champion Junior Women's Debater, 1939; First in Women's Debate Millsap's Tournament, 1938; First in Women's Debate Millsap's Tournament, 1939.

MRS. EARL RUDOLPH

Degree of Fraternity; Coach of Oratory, Arkansas Beta.





MINISTERIAL

Clarence Cutrell
President
First Quarter

Bill Woodson
President
Second Quarter

MEMBERS

Dr. O. W. Yates
Dale McCoy
Charles Meek
Wallace Marks
David Moore
Edwin Keith
I. M. Kibbee
W. L. Yelldell
Seibert Haley
Ernest Lee Holloway

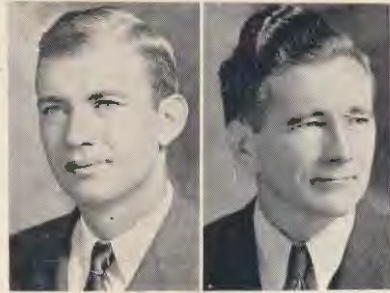
Edgar Harness
Lawson Hatfield
Brooksher Banks
Charles Nash
Carl Overton
Frank Pitts
Bill Petty
Orvis Brooks
Jeff Rousseau
Floyd V. Rye
John Burton

Herndon Conger
Albert Demrod
Derward W. Deere
Raymond Early
Raymond Elam
Virgil Benson
Alonzo Cottingham
John A. Freeman
Carl Harris
James Cunningham
Dalton Leath

John Deering
Adrian Blankenship
Winton Mizell
Henry Hawkins
Taylor Daniel
Luther Dorsey
Otis Denney
J. T. Summers
Wilson Deese
John E. Steely



ASSOCIATION



Delbert Garrett
President
Third Quarter

Kyle Lawrence
President
Fourth Quarter

MEMBERS

Dr. L. T. Wallace
Charles Bowen
Paul Meyers
Newell Blakely
Ray Branscomb
R. L. Blackwell
Keith Babb
Wade Armstrong
Le Moyne Adkins
Andrew Hall
Guy Wilson

Wesley Lindsey
John Whitlow
Cone Stell
Silbie Wallace
Charles Duncan
John Whittle
Samuel King
Wilburn Powell
Norman Hames
J. M. Holder
Earl Humble

Jessee Reed
Ermon Webb
Othar Smith
Elmer Morgan
Gilbert Waud
Claris Johnson
Walter Watts
Robert Hughes
James Medley
R. L. Lawrence
Lennox Medford

Walter Mizell
Dale Taylor
John Whitlow
Lehman Webb
J. J. Freeman
Chester Milam
Willard Lloyd
E. W. Lloyd
Leon Kimmel
Huston Lanier



LIFE SERVICE BAND

OFFICERS—FIRST SEMESTER

ERMON WEBB	President
JOSEPHENE CLEMENTS	First Vice-President
HANNAH CHANDLER	Second Vice-President
RAYMOND EARLY	Third Vice-President
VIRGINIA BRYANT	Pianist
J. A. FREEMAN	Chorister
GAIL CROW	Reporter
MARTHA ZANE WAGGONER	Secretary
ROBERT HUGHES	Treasurer

MEMBERS

Margaret Haynes	Orvis Brooks	Martha Hairston	Clarence Cutrell
Donald Orr	C. D. Sallee	Nell McMahan	Loitie Mae Swaney
Della Mae Hart	Frank Pitts	Carl Overton	Mary Ellen O'Gain
Christiana Hardy	Brooksher Banks	Ann Wollerman	Mary Jo Lile
Tammy Halsell	Winton Mizell	Keith Babb	T. D. McCulloch
Jewell Gann	Gussie Mae Speaks	Delbert Garrett	Wilson Deese
Charles Duncan	Lois Grevier	Marzee Ann Cantrell	Kyle Lawrence
Emma Jean Webster	Dalton Leath	John Deering	Martin Burns
Wallace Marks	Ida Nell Daily	Mary McCammon	Virginia Webster
Mary Ellington	Tracy Barrett	Dorothea Manor	Mary Ann Heath
Othar Smith	Violet Pruitt	Doris Hickmon	Elise Pitts
Vanita Vaught	Marie Blankenship	Earnest Lee Holloway	Delbert McAtee



LIFE SERVICE BAND

OFFICERS—SECOND SEMESTER

FRANK NORPHLEET	President
ISABEL SCHOOLEY	First Vice-President
MARY McCUISTION	Second Vice-President
HOUSTON LANIER	Third Vice-President
VANITA VAUGHT	Pianist
JOE DANIELS	Chorister
WAYNE WARD	Reporter
ONITA WILEY	Secretary
D. WADE ARMSTRONG	Treasurer

MEMBERS

Douathet Payne	Herndon Conger	Luther Dorsey	Durwood Deere
Jonnie Whittle	Mary Tolson	Otis Denny	Inez Webb
Edward Walker	Willye Gann	Evelyn Hardin	Mary Jane Dean
Anna Moore	R. L. Blackwell	Cone Stell	Mable Bryant
Mary Lee Clark	Loise Layton	Jesse Reed	Charles Meek
Evelyn Meyers	Marilyn Sanders	Margaret Burton	Earl Humble
Sallie Witt	Mrs. Floyd Rye	Charles Nash	Lemoyne Adkins
John Ed Steeley	Albertine Meador	Ivy Dean Adams	Marian Farquerson
Ina Grace Partain	Melvin Rice	Chester Milan	Wesley Lindsey
Ruth Williams	Iona Sue Gray	Sara Bell Leach	Bill Woodson
Dale McCoy	C. C. Beatty	Marie Hardwick	Mary Exie Ferguson
Fred Smith	Florene Baker	Omer Norris	Clara Lou Hollen
			Lehman Webb



MINISTERIAL AUXILIARY

OFFICERS

MRS. GILBERT WAUD *President First Semester*
MRS. TAYLOR DANIEL *President Second Semester*

MEMBERS

Mrs. C. D. Sallee	Mrs. I. M. Kibbee
Mrs. Adrian Blankenship	Mrs. B. D. Smith
Mrs. Melvin Roberts	Mrs. Charles Bowen
Mrs. Ray Branscomb	Mrs. J. B. King
Mrs. Dalton Leath	Mrs. E. W. Lloyd
Mrs. Elmer Morgan	Mrs. Floyd B. Rye

Mrs. D. A. Dalby



Presenting

THE R. O. T. C.

of

O U A C H I T A



R. O. T. C.

OFFICERS

- MAJOR HARRY J. FARNER, Infantry U. S. A. *Commandant*
Professor Military Science and Tactics
- MAJOR JOHN P. LAKE, Infantry U. S. A.
Assistant Professor Military Science and Tactics
- SERGEANT HERMAN BYRUM, Infantry D. E. M. L., U. S. A.
Assistant in Military Department

R. O. T. C. BAND





R. O. T. C.

OFFICERS

- CADET MAJOR JACK SWAIM *Battalion Commander*
 MISS MARJORIE ALLEN *Battalion Sponsor*
 CAPTAIN BOB EDWARDS *Battalion Executive Officer*
 FIRST LIEUTENANT JAMES VANNOY *Adjutant*

BATTALION ON PARADE





COMPANY A

OFFICERS

- | | |
|---|---------------------------------|
| CAPTAIN J. T. BERRY | <i>Company Commander</i> |
| MISS CAROLYN JANE CARPENTER | <i>Company Sponsor</i> |
| FIRST LIEUTENANT FRANK TILLEY | <i>Commander First Platoon</i> |
| SECOND LIEUTENANT BILLY MOWREY | <i>Second in Command</i> |
| FIRST LIEUTENANT HERMAN HANKINS | <i>Commander Second Platoon</i> |
| SECOND LIEUTENANT URBAN HOLLAND | <i>Second in Command</i> |
| FIRST LIEUTENANT L. M. KEELING | <i>Commander Third Platoon</i> |
| SECOND LIEUTENANT FLOYD NEELEY | <i>Second in Command</i> |





COMPANY B

OFFICERS

CAPTAIN T. O. MATLOCK	<i>Company Commander</i>
MISS PAULINE GLOVER	<i>Company Sponsor</i>
FIRST LIEUTENANT JOE LANGSTON	<i>Commander First Platoon</i>
SECOND LIEUTENANT JEFF CONE	<i>Second in Command</i>
FIRST LIEUTENANT WENDELL POWER	<i>Commander Second Platoon</i>
SECOND LIEUTENANT LOUIS JACKS	<i>Second in Command</i>
FIRST LIEUTENANT WILLIAM EARL MARTIN	<i>Commander Third Platoon</i>
SECOND LIEUTENANT LELAND HALL	<i>Second in Command</i>

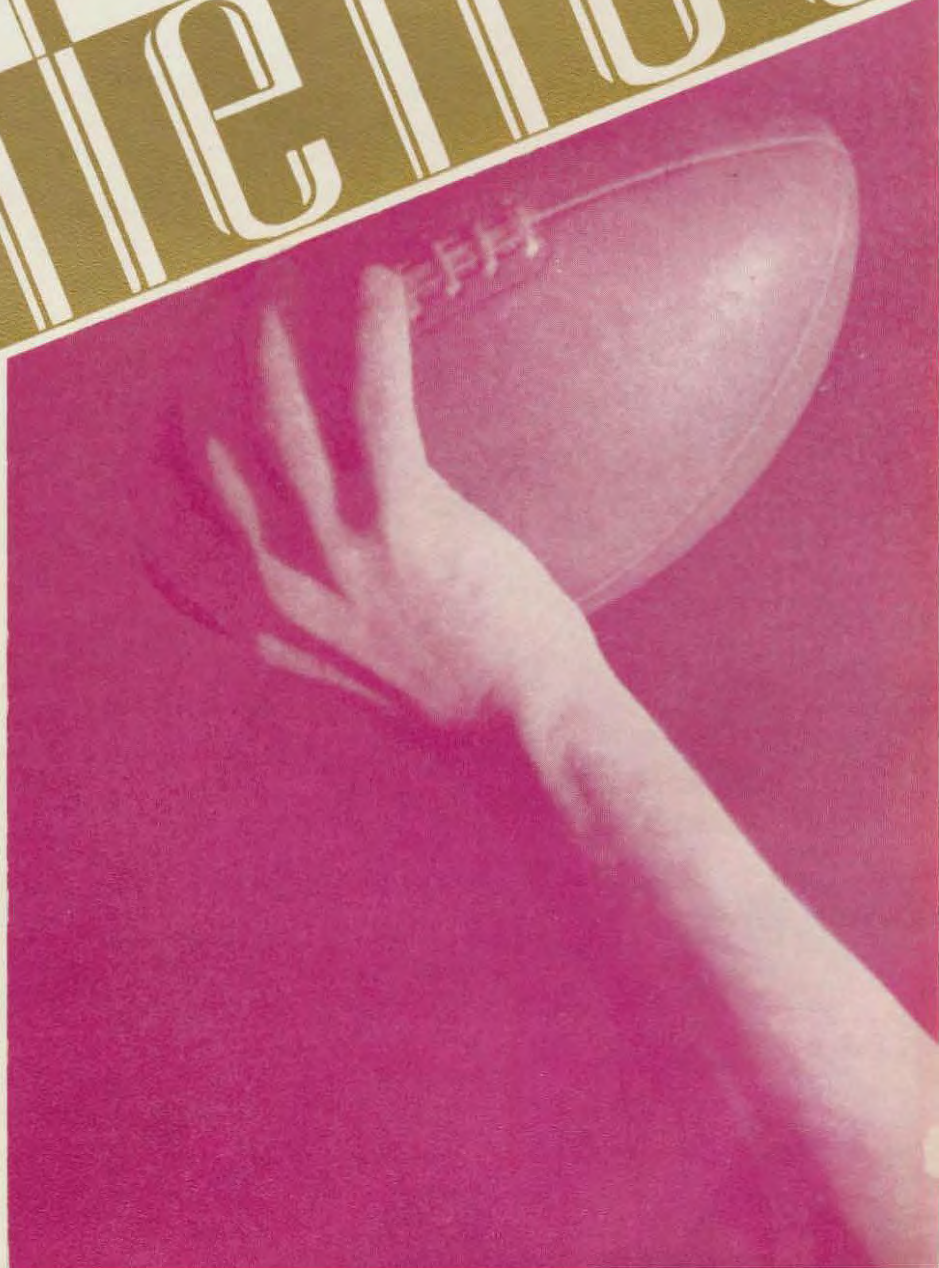




And the rains came—Which one's the Dago?—Table muscle-bound trip-lets, where's Hankins?—Sody doesn't know when to quit—Don't ask me what they're doing—Shooting the works—Posing—Matlock, quote, "Fall in, you—'??? unquote censored)—Just fooling around—Vannoy drank the most . . . (correction) ate the most dinner—The toughest guys on the range—Red's nose is not blistered much—Nice clean rifles, (Hello R. A.) Brady is laughing at you Vannoy—Triple 'abdomen' Matlock's fancy diving haven. Shooting the bull instead of the pistol.

O U A C H I T O N I A N

Athletics



W. I. (Bill) WALTON, Coach

The Ouachita Tigers under the leadership of Coach Walton were beset by injuries that hampered what should have been a great football team, but they came through with their chins up and that OLE NEVER DIE, FIGHTING, OUACHITA SPIRIT.

The first game with O. B. U. at Shawnee, Okla., was closely fought but won by O. B. U. 7-6. Ouachita's score came at the end of the game thru a pass interception by Tilley.

Westbrook's educated toe won the second game from Oklahoma State Teachers College of Durant, 3-0.

13-6 was the score when the Tigers defeated L. S. U., North East Center of Monroe. Starrett of N. E. C. proved to be a hard man for the Tigers to stop. Langston, Neal and Stockmer showed up well in the defense.



Cumberland was easily defeated by a score of 32-0. Reed was by far the outstanding player of the game with his running and passing.

In the game with Arkansas Tech, Ouachita showed her superiority over the Champions but, due to lack of reserves, were tied, 7-7.

Arkansas Teachers slid into a 2-0 win over the Tiger team when a punt was blocked and it slipped all over the field to finally be covered across the goal line, giving the Woodson's two points. Due to the rain and mud it was a punting duel with A. S. T. C. getting the only break of the game. Westbrook was injured in this game after he had proved his ability as a great punter.

With Reed and Westbrook out of the line-up, and Nelson and McHaney on the injured list, La. Normal took the Tigers, 19-0. The main feature of the game was the kicking of J. T. Berry; he averaged over fifty-five yards for the game.

Hendrix got lucky and played over their heads to a 6-0 defeat for the Tigers.

The Henderson Reddies beat Ouachita, 3-0. It was hard to take but we'll get 'em next year.



STUDENT MANAGERS

BROWN	Trainer
SMITH	Time-keeper
CARPENTER	Trainer

CHEER LEADERS

Halsell . . Newsom . . Harrington . . Stewart . . Seligman



T H E 1 9 4 0



T H E 1 9 4 0

No. 30—REED, <i>Back</i>	3 years
No. 44—LANGSTON, <i>Guard</i>	3 years
No. 36—BERRY, <i>End</i>	3 years
No. 46—BAXTER, <i>Back</i>	3 years
No. 48—NELSON, <i>Back</i>	3 years
No. 55—HARDIN, <i>Tackle</i>	3 years
No. 53—TILLEY, <i>Back</i>	4 years
No. 33—BENSON, <i>Back</i>	3 years
No. 45—CREECY, <i>Center</i>	2 years
No. 40—M: HANEY, <i>Back</i>	2 years
No. 59—NEAL, <i>Tackle</i>	1 year
No. 56—WINBURN, <i>End</i>	2 years

Bottom Row: Neal, Reed, Langston, Baxter, Cunningham.
 Second Row: Winburn, Benson, Hardin, Harp, Hargis, Nutt, McHaney, Kaufman.
 Third Row: McClain, Perry, Nelson, Thornton, Creecy, Kelley, Halsell.
 Top Row: Tilley, Ramsey, Shepherd, Gilbert, Porter, Holmes, Stockmer.





T H E 1 9 4 0

No. 50—THORNTON, <i>Tackle</i>	1 year
No. 49—HARP, <i>Tackle</i>	1 year
No. 52—RAMSEY, <i>Tackle</i>	2 years
No. 37—KELLEY, <i>End</i>	1 year

No. 41—HARGIS, <i>Guard</i>	1 year
No. 39—STOCKMER, <i>Guard</i>	2 years
No. 31—CUNNINGHAM, <i>Back</i>	1 year
No. 38—KAUFMAN, <i>Guard</i>	2 years

No. 54—PORTER, <i>Guard</i>	1 year
No. 47—HOLMES, <i>End</i>	1 year
No. 56—WESTBROOK, <i>Back</i>	2 years

ASSISTSANT COACH MATLOCK.

OUACHITA vs. DURANT



OUACHITA vs. CUMBERLAND



BASKETBALL 1940



J. T. BERRY



"SLIM" GOODWIN

With Goodwin, Berry and Vannoy leading the way, the Ouachita cagers completed a very successful season. Winning 12 games and losing 7.

Berry was high scorer for guards throughout the state, while second in individual high scoring. Both Goodwin and Berry were selected on the All-State A. A. U. team. Although Ouachita didn't win the Tournament they were the only school to place two men on the All-State Team. Vannoy made second All-State this year, but Ferquerson, Deese, Ellis, Woods, Hall, East, Hosack and Gilbert should form the nucleus for a great team next year.

PLAYERS

BERRY, <i>Guard</i>	4 years
EAST, <i>Forward</i>	2 years
VANNOY, <i>Forward</i>	4 years
GOODWIN, <i>Center</i>	4 years
GILBERT, <i>Guard</i>	1 year
HOSACK, <i>Forward</i>	1 year
DEESE, <i>Guard</i>	2 years
ELLIS, <i>Guard</i>	2 years
FERQUERSON, <i>Forward</i>	1 year

RESUME OF SEASON

Ouachita... 60	Texarkana Junior College... 37	Ouachita... 31	Arkansas State Teachers... 48
Ouachita... 24	Centenary... 38	Ouachita... 23	Henderson... 38
Ouachita... 23	Stephen F. Austin... 36	Ouachita... 41	Magnolia... 29
Ouachita... 38	Louisiana Tech... 42	Ouachita... 28	Arkansas State Teachers... 27
Ouachita... 51	Warren Independents... 38	Ouachita... 34	Henderson... 37
Ouachita... 51	Texarkana Junior College... 31	Ouachita... 47	Arkansas College... 58
Ouachita... 39	Magnolia A. & M... 21	Ouachita... 35	Tech... 31
Ouachita... 55	Arkansas State... 53	Ouachita... 52	Heber Springs Independents... 34
Ouachita... 33	Hendrix... 30		
Ouachita... 50	Tech... 44		
Ouachita... 42	Hendrix... 32	717	704



O U A C H I T O N I A N



TRACK 1939

SGT. JOHN MAURER, *Track Coach*

After having dropped track for four years, the 1939 track squad made a remarkable come-back. Although the material was limited, they showed up well in three meets. They did exceptionally well in the state meet, with East winning both low and high hurdles and Cone winning the pole vault.

The squad was under the direction of Sgt. Maurer, well-known in the state as one of the best track coaches in the South.

There were three lettermen: East, Cone, and Farris. Farris was outstanding in two triangular meets with his high jumping, but failed to place in the state meet, due to a wet track.

FRANK REED—A little light for javlin thrower but good enough to place second in a triangular meet between Ouachita, Teachers, and Harding.

BILL WINBURN—A dash-man and high-jumper, placing second in a triangular in the high-jump.

RED WILKINS—Red did a good job of running the half-mile.

ANDREW WIDENER—A miler out of the book, fast enough for anybody's track team, but too much competition kept him from winning.

JACK MCHANEY—Jack threw the discus, placing third in a triangular meet.

JOE CREECY—Joe placed second in the high hurdles in a triangular meet he was unable to run in the state meet. (Action at bottoim of page).

BILLY GILL EAST—(Action) Winning the 220-yard low hurdle in the state meet at Russellville with the time of 24.5 seconds, one-tenth of a second under the state record. (Still shot at bottom of page).

JACK FARRIS—A real high-jumper who could do the Western Roll like a veteran. He placed first in one meet and second in another.

LLOYD MOORE—Lloyd threw the discus, placing second in two meets, but due to a wet track, was unable to place in the state meet.

JEFF CONE—"The Wilmot Kid" who surprised everybody in winning the pole vault at the state meet.

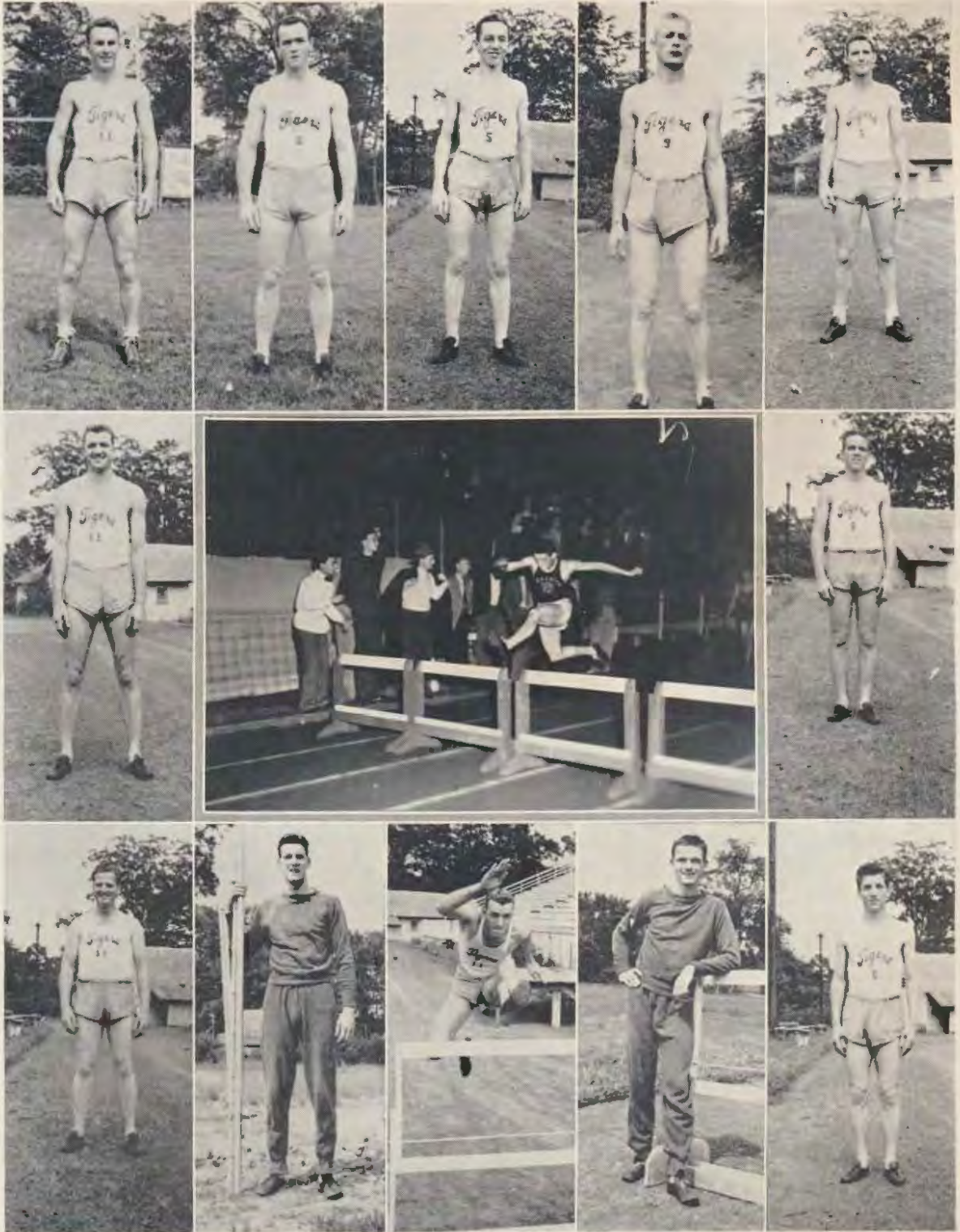
PAUL BOLIN—A dash man who can't stand to have somebody ahead of him. Paul will prove valuable to the team next year.

JACK FARRIS



JEFF CONE





O U A C H I T O N I A N

Phi Delta Sigma's in a huddle—Stinky's the center of attraction—Hi-Hat pledges—Phi Delts again—Phi Delts Banquet—Hi-Hat banquet—Same banquet if the Phi Delts—Fern that's not William Earl on your right—Hi-Hats having a bite to eat—Gail you weren't ready for this picture to be made were you?—Billy you had better find out who that letter is from that Jimmie Lee is reading—Note the intentions on Robinson's face.





CALENDAR OF EVENTS

September 12—What? New shrubs on the campus? My error, just a bunch of green freshmen blowing in.

September 13—Cooper finds Military too tough for suction.

September 14—First Chapel. Dr. Grant greets the freshmen with the same speech he used my freshman year.

September 15—Alta Bess gets third degree from freshman's mother, who was quite indignant at the "dance of the seven veils"—Bess couldn't WIGGLE out.

September 16—Comes Saturday — Tired of school—Seligman, Cone and Harrington off for the week-end.

September 17—Sunday and no supper.

September 18—Pro gives us the same ole stuff at dormitory meeting.

September 19—Jimmie Lee Stewart and Mo Seligman elected cheer leaders at the first pep-meeting of the year.

September 20—Hankins is trying to make a second Instein out of freshman Birdsong.

September 21—Football team leaves for Shawnee, Okla. to pin the O. B. U. Bison's ears back.

September 22—They kicked theirs and we missed—7-6.

September 23—Hash.

September 24—Sunday.

September 25—S. A. S. take in five pledges.

September 26—First issue of Signal out.

September 27—Tillie is the proud father of 10 bouncing rats. Poor Penn—They will need a lot of care.

September 28—Big pep-meeting downtown on eve of the game with Southeastern Okla. Teachers from Durant.

September 29—Postponed game because of rain.

September 30—Westbrook kicked field goal to heat Durant 3-0.

October 1—Sunday.

October 2—Red Shirts take in 7 pledges—The shirts are not the only things "Red."

October 3—Just another day—There's too many just like it—Why don't somebody do something.

October 4—Jump and jive were served tonite at dinner by the orchestra from across the ravine—I saw some mighty good Baptists pattin' their feet—tch! tch!

October 5—Some freshman was wondering if Chuck was going to play for our "proms"—Something tells me the Big Brother class is slipping.

October 6—Mrs. Gunn surely is happy everyone is leaving for the week-end.

October 7—How do I know what happened I went home too—I imagine we had hash.

October 8—Got back early to study—uh huh.

The Elk Horn Bank & Trust Company

ARKADELPHIA, ARKANSAS

1884 1940

* * * * *

CAPITAL AND SURPLUS . . . \$160,000.00

* * * * *

A Friend Of Ouachita

Your Account Appreciated at This Bank

Member F. D. I. C.

THE
CADDO HOTEL
AND
COFFEE SHOP

The Hospitality House

* * * *

When In Arkadelphia
Visit An Old Friend

* * * *

MRS. R. C. CUNNINGHAM,
Proprietess

LOGAN GROCE RCO.

Wholesale Distributors

Prescott and Arkadelphia,
Arkansas

Blue and Gold and Spiral
School Supplies

"COMPLIMENTS OF"

E. L. COMPERE

El Dorado, Arkansas

"COMPLIMENTS OF"

HARGIS BROS.

SALES & SERVICE

Warren, Arkansas

Chrysler and Plymouth

"COMPLIMENTS OF"

RITCHIE GROCER CO.

Hope, Arkansas

* * * *

We Own and Operate Nine (9)

Stores in Arkansas and

Louisiana

C. L. DURRETT

Little Rock, Arkansas

**LIFE, ACCIDENT AND
HEALTH INSURANCE**

Of All Kinds

**General Agent For
PACIFIC MUTUAL LIFE
INSURANCE CO.**

**MERCHANTS &
PLANTERS BANK &
TRUST CO.**

* * * *

**The Bank of Friendly
Service**

* * * *

Member F. D. I. C.

* * * *

Arkadelphia, Arkansas

**TOBEY BROKERAGE
COMPANY**

FLOUR

MEAL

FEEDS

SEEDS

Arkadelphia, Arkansas

**TREADWAY ELECTRIC
COMPANY, Inc.**

**Wholesale Distributors
Of
ELECTRICAL SUPPLIES
Little Rock, Arkansas**

J. C. PENNEY COMPANY

**“Where Savings Are
Greatest”**

FOX & TURNER

**Fort Smith's Leading Clothing Store
For Men and Young Men**

* * * * *

Where Style and Quality Meet

* * * * *

**607 Garrison Avenue
FORT SMITH, ARKANSAS**

Compliments of
WORTZ BISCUIT CO.
 The Biscuits That Build
Fort Smith, Arkansas

PATRONIZE
 OUR
 ADVERTISERS

QUALITY CONSIDERED
WE ALWAYS SAVE
YOU MONEY

EASY TERMS

EADS BROS.
FURNITURE COMPANY
Fort Smith, Arkansas

OUACHITONIAN FAMILY TREE

Year	Editors:	Business Managers:	Year	Editors:	Business Managers:
1907	J. E. Talbot Ruby Hunt	Rupert Blakely Henry Bennett	1919	E. S. Mizell Edwin B. Walker	W. H. Robins Harold Ward
1909	Mary Frances Rudolph Hamilton Moses	T. J. Weatherall	1920	Edwin B. Walker	Ray Kelly
1910	Beulah Wright Birket Williams		1921	Frank T. Edwards	Frank Cargile
1911	Louis Crow Louis Crow		1922	Roy Phillips	Sam Dardenne
1912	D. P. Muse Helen Mae Stearns	Charles Gardiner W. C. Ware	1923	Floyd H. Goodman	Charles Elliott
1913	J. W. Ramsey Lillian Fortune	Dwight Crawford W. E. Huddleston	1924	Wayne McCauley	W. I. "Bill" Walton
1914	H. L. Muse Margaret Crawford	J. D. Lewis W. R. Brooksher	1925	Blake Smith	James Thomasson
1915	Clarence Hooper Elizabeth Autrey	Spencer Fox J. I. Cossey	1926	John H. Elliott	Earl Dawson
1916	Sam Dudley Sally Lou Wilson	H. B. Reeves H. S. Hargis	1927	Joe F. Rushton	Relton McCarrroll
1917	Keith Edwards Ruth Goodwin	Carroll Hester Pauline Drake	1928	William C. Brasher	Ben F. Runyan
1918	John N. Holiman Ruth Turner	Gill W. Gulledege Fred Fuller	1929	Charles L. Deevers	Harold McCarrroll
			1930	J. Raymond Baine	Cecil Shuffield
			1931	Neill M. Sloan	W. I. Bell
			1932	Shelby L. Gillette	Roy Golden, Jr.
			1933	(No Annual)	
			1934	Aubrey C. Halsell	
			1935	Wilford C. Harris	James E. Tull
			1936	James C. Hobgood	William E. Mankin
			1937	John Bradley	Marsh Whittington
			1938	Alsey L. Holland	Paul H. Powers
			1939	Cecil M. Sanders	Harvey E. Marsh
			1940	Jeff Cone	T. O. Matlock



CALENDAR OF EVENTS

October 9—Hopes for Ouachitonian improving slightly—still using red ink though.

October 10—Had a good pep-meeting, everybody full of pep among other things.

October 11—Cooper and Haynes put over another deal.

October 12—We play L. S. U. N. E. C. tomorrow—all is tense.

October 13—We won 12-6.

October 14—Hash again.

October 15—Sunday.

October 16—Comes Monday comes classes—ho-hum.

October 17—It looks like James Kelly has the S. A. right.

October 18—Freshmen girls are through with initiation topped with a screaming local and I do mean screaming.

October 19—And some people don't believe in evolution—they ought to see the freshmen girls with make-up on.

October 20—Large social evening—S. A. S. have party in Hot Springs—Red Shirts have hay-ride for pledges.

October 21—Kewpie Klub has dinner party at the Caddo.

October 22—Sunday.

October 23—Sarah Lee says she isn't having any fun. Maybe there's something wrong with her, there seems to be enough boys trying to show her a good time.

October 24—What no pep-meeting—why Mr. Harrington!

October 25—Yep-yep—this Cone-Stevenson affair is looking serious—well maybe.

October 26—Tigers broke loose and trounced Cumberland U. severely, 32-0 was the score.

October 27—Seems like Saturday—why do they have football games on Thurs.

October 28—Junior Carnival. Nino Nowlin sure has a lot of financial support. Everyone had a large time, even Seligman.

October 29—Sunday.

October 30—Dean Witberington is still commenting on courtin'—wonder what it was like "back in the good ole days."

October 31—Bonfire pep-meeting. Tech burns in effigy — will they burn Friday night? We hope so.

November 1—Mr. Abell brings the jump and jive boys for a little dinner music played in the good ole Ouachita style.

November 2—Everyone on needles and pins—can we beat Tech—we think so.

November 3—My! My! What a quiet special until Cooper gets aboard in Little Rock. We won a moral victory even if the score was tied 7 all. Is Epstein sick?

November 4—Oh! Boy! Them goodly slumbers.

November 5—Sunday.

TWO ARKANSAS PRODUCTS WITH PERFORMANCE RECORDS SECOND TO NONE

LION KNIX-KNOX G A S O L I N E



Every now and then a product is made that will stand on its own merit. Such a gasoline is Lion Knix-Knox. We'll let the full power, quick starting and high anti-knock performance of Lion Knix-Knox speak for itself.

LION NATURALUBE THE NEW TYPE MOTOR OIL

Because of its ability to remove hard carbon deposits from rings, pistons and valves, and its stronger natural protective film, Lion Naturalube motor oil is another Lion product with a great performance record.



LION OIL REFINING CO.

EL DORADO, ARKANSAS

T. H. BARTON, *Pres.*



Next Time **STOP AT THE SIGN OF THE LION**

For Goodness Sake
Use
JACK SPRATT FOODS
Over
300 Fine Products
C. J. HORNER CO.
Wholesale Distributors

**WILL LEE'S DRUG
STORE**

The Prescription Store
Prescriptions Filled
With Care
Phone 138
Arkadelphia, Arkansas

COMPLIMENTS OF
TOM SPAULDING

Spaulding Athletic
And Sporting Goods

Little Rock, Arkansas

COMPLIMENTS OF

**NOWLIN
FURNITURE
CO.**

Arkadelphia, Arkansas

**OZAN-GRAYSONIA
LUMBER CO.**

Building Materials

* * * * *

Helping To Build Arkansas

* * * * *

Phone 82

Arkadelphia, Arkansas

**CARTER'S MEN'S
STORE**

* * * * *

The Most Complete
Men's Store In
Arkadelphia

* * * * *

NICK CARTER, Proprietor

Phone 20

Arkadelphia, Arkansas

Thanks To

STUDENT CLEANERS

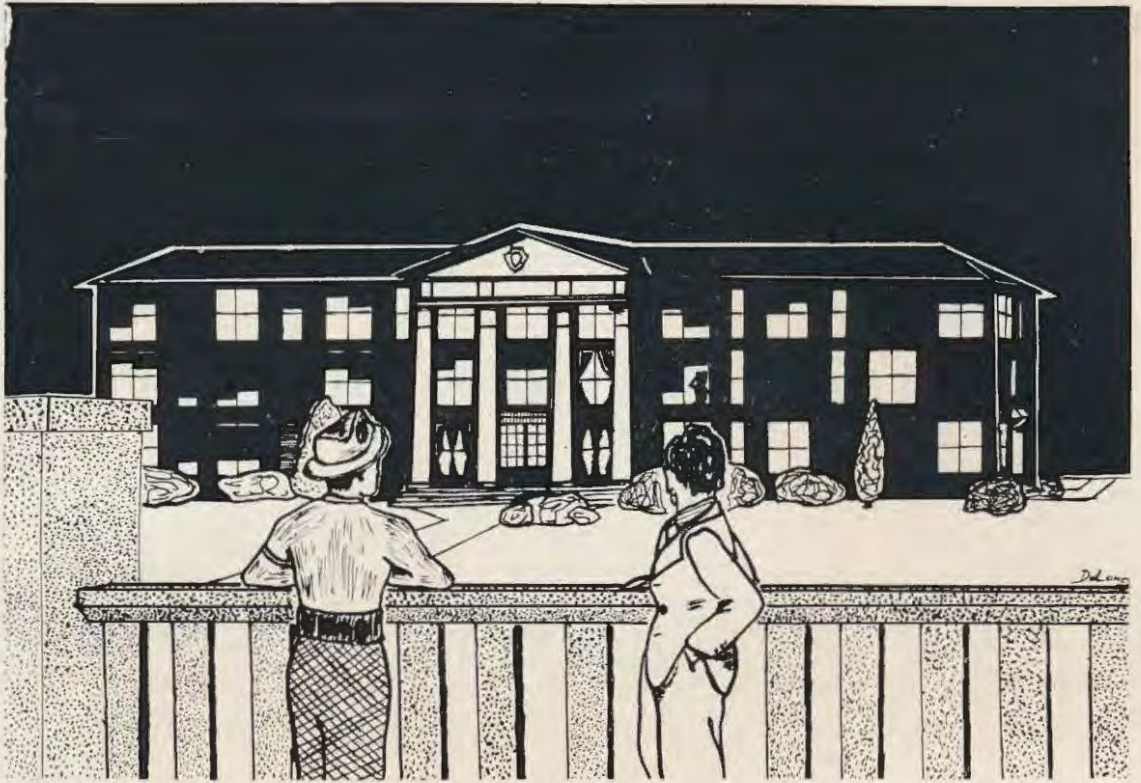
FOR

CO-OPERATION WITH THE OUACHITONIAN

Prompt, Efficient, Accommodating

At Your Service

D. A. DALBY, Manager



CALENDAR OF EVENTS

November 6—Meet classes? Well-er-physically, yes, but spiritually, no.

November 7—Signal announces Who's Who.

November 8—We play Teachers Friday.

November 9—Not too much pep tonite—me thinks the freshmen need some Tiger spirit beat into them—Ouachita is slipping.

November 10—Wotta wet game. Teachers slid into a 2-0 victory.

November 11—Just glowing cases of lime burns and R. A.

November 12—Sunday.

November 13—Mary Stevenson gets advice at Heard's Drugs on how to handle two nice boys at once.

November 14—I still sav if we had a dry field we would have beat Teachers.

November 15—What's on at the show tonite—15c.

November 16—Everyone in sbape for the Louisiana Normal game except the football team.

November 17—The game broadcast from Shreveport—They say Berry is the greatest kicker they've seen in those parts—Do I have to give the score—noooooo.

November 18—Saturday and hash again.

November 19—Sunday.

November 20—Why do they have school on Mondays—mama when I'm president I'm going to change that.

November 21—Sometimes I wonder if college life is really what it's cracked up to be.

November 22—What's this I hear about the President eating Turkey tomorrow.

November 23—I'd like to have dinner.

November 24—Red Shirts have a dinner party in Little Rock—A large time had by all.

November 25—Dogpatch takes a mauling from Skunk Holler in Sadie Hawkins day classic—That's the Sadie Hawkins day we didn't have—Why? Nobody knows.

November 26—Sunday.

November 27—Everyone wholly disgusted at not having the scheduled Sadie Hawkins day.

November 28—It's time someone realized that there are two classes of students on this campus.

November 29—Do you mean there is going to be another Thanksgiving? I don't get it—Well who does?

November 30—Hendrix outplays Tigers in winning 6-0. This was another case of "mind over matter" we didn't mind them cause they didn't matter.

Feel At Home In
Ouachita Book Store

* * * * *

SCHOOL SUPPLIES
NEW AND USED TEXTBOOKS-STATIONERY
SHAEFFER PENS AND PENCILS

* * * * *

When You Have That Empty Feeling
Come In For

Cold Drinks, Candy, Home-Made Sandwiches

* * * * *

Phone 142

E. L. BREWSTER, Manager

A. B. CONE & COMPANY

GENERAL MERCHANDISE

WILMOT, ARKANSAS

W. T. Matlock

FANCY GROCERIES

ARKADELPHIA, ARKANSAS

Scott-Mayer Commission Company

LITTLE ROCK, ARKANSAS

* * * * *

Wholesale Dealers In

FOREIGN AND DOMESTIC FRUITS

PRODUCE AND GROCERIES

* * * * *

WE SEARCH THE MARKETS OF THE
WORLD FOR GOOD THINGS TO EAT

COMPLIMENTS OF

CECIL CUPP

* * * *

Operating the

ROYAL AND CO-ED

THEATRES

And

COLONIAL TAVERN

* * * *

Arkadelphia, Arkansas

**Mobilgas and Mobiloil
Products**

**Grease and Chassis
Cleaning**

Station: 8th and Clinton

T. N. WILSON, Mgr.

H. L. YOUNGBLOOD, Prop.

THIRSTY

DRINK NEHI OR

R C. COLA

In Large Bottles

NEHI BOTTLING CO.

Arkadelphia, Arkansas

A. SHIRLEY, Prop.

THE OUACHITONIAN WAS PRINTED BY

Russellville Printing Co.



CATALOG AND COM-
MERCIAL PRINTERS

Russellville, Arkansas.

We Serve the Schools of Arkansas

CALENDAR OF EVENTS

HOLIDAYS

December 4—Well what do you think—That's right—Another Thanksgiving—Hey! This is getting monotonous, there is such a thing as carrying something too far. Now we have a national holiday one week, state holiday another, and last but not least city holiday.

December 5—Well we had a—meeting in the gym tonite. It was supposed to have been a pep-meeting but everyone forgot their pep.

December 6—Another one of those meetings.

December 7—Here's a large bouquet of American Beauties to Harrington, Seligman, and Halsell—that was really a swell pep-meeting—they tell me those boys worked plenty hard. Incidentally all of this was caused by the Reddie-Tiger clash.

December 8—Whew! what a bloody battle—Reddies get worse end of fight but eeked out a 3-point advantage.

December 9—Hi Hats have dinner party.

December 10—Sunday.

December 11—Just nine more days until Christmas (holidays)—Oh! happy day.

December 12—Santa Claus has already started getting fan mail.

December 13—The Editor's letter to Santa: Dear Santa, I think I've been a good little boy. I haven't been to see Dr. Grant

all year. Please bring a full gallon of RED ink. Soda bought a new car.

December 14—A Christmas dance? well not exactly.

December 15—Five more days until holidays.

December 16—Aint Saturdays swell—for sleeping?

December 17—Sunday.

December 18—Two more school days 'til Christmas.

December 19—I can't believe it's tomorrow it just slipped up on me it seemed only like last year last week.

December 20—So long "gates" see you next year. S. A. S. hold annual Xmas party at Hot Springs.

HOLIDAYS

January 2—Oh! gay college days—classes again—ugh!

January 3—I can hardly wait 'til exams get here.

January 4—I don't know how this happened, I didn't have a thing to write today.

January 5—Red Shirts have quail supper at the Caddo Hoteel.

January 6—Phi Delta Sigma celebrate 1940 with formal dinner at the Caddo.

January 7—Sunday.

January 8—After many sleepless nites C. S. White is an uncle—or was it an aunt?

**TEMPLE COTTON OIL
COMPANY**

Manufacturers of
**COTTON SEED PRODUCTS
QUALITY FERTILIZERS**

"Arkansas' Leading Enterprise"

**"COMPLIMENTS OF"
SOUTHERN ICE CO., Inc.**

**Washed Air Refrigerators
And Crystal Clear Ice**

Call 202

Arkadelphia, Arkansas

WILLIAMS & PHILLIPS

The Home of Good Foods

We — Phone
Deliver — 38

Arkadelphia, Arkansas

**COLLEGE STUDENTS
FEEL AT HOME**

—AT—

**NICHOLS'
SANDWICH SHOP
LUNCHES, SANDWICHES
REFRESHMENTS**

Date With Us On Week-End Nights
11th St.—By the High School

T H E

Caddo Cleaners

A Friend of Ouachita

Modern Equipment

Phone 323

509 Clinton Street

Arkadelphia, Arkansas

One Day Service

**"COMPLIMENTS OF"
STUEART GROCER CO.**

Wholesale and Retail
123-129 Main Street
Malvern, Arkansas

Since 1905
Travel In Here Before
You Travel Away

**PATTISON TRUNK &
BAG CO.**

Third & Louisiana Sts.
Telephone 4-4253
Little Rock, Arkansas

BUCK'S

The Best In Eating
SODA FOUNTAIN

Private Parties—Phone 3-5406

5310 Asher Avenue
Little Rock, Arkansas
R. B. GREEN, Prop.

**Searcy Ice and Coal
Company**

SEARCY, ARKANSAS

B. C. HUDDLESTON, Manager

**J. E. BERRY
DRUG CO.**

**PRESCRIPTIONS
SODA FOUNTAIN**

* * * *

A Ouachita Booster

* * * *

Smackover, Arkansas

* * * *

COMPLIMENTS

OF

**SOUTHERN
LUMBER CO.**

OF

Warren, Arkansas

* * * *

FINANCIAL STATEMENT OF THE 1940 OUACHITONIAN

**The Following Statement Is Published to Comply With the
National Tariff Act:**

DEBITS	CREDITS
Printing	Sale of Annuals
\$1,000.00	\$ 18.50
Engraving	Sale of Advertising
978.75	2.98
Photography	Sale of Pages
650.00	20.00
Miscellaneous	Graft on Cap and Gown Pictures
226.00	35.00
Automobile for Bus. Mgr.	Donations
450.00	10.00
Bus. Mgr. and Editors joint	R. O. T. C. Checks
trips to Little Rock	65.00
56.56	Miscellaneous
Paste and Scissors36
.36	
Charity	
.13	
Red Paint for Editor	
1.25	
Red Ink for Bus. Mgr.	
2.50	
Loss thru "deal" with Haynes	
17.46	
Upkeep on Editor's watch	
6.50	
TOTAL	TOTAL
\$3,389.51	\$150.48

STANDARD OF



COMPARISON

Produced in

Arkansas by

ARKANSAS PEOPLE

BRADLEY BRAND PRODUCTS . . . Oak and Beech Flooring and all standard lumber items in Southern Hardwoods and Arkansas Soft Pine . . . are produced from Arkansas forests by skilled Arkansas labor. This means that Bradley's payroll represents a substantial contribution to the state's annual income . . . that, by virtue of extensive forest and plant facilities, promises to continue this important contribution to Arkansas' economic advancement for many years to come.

BRADLEY LUMBER COMPANY *of Arkansas*
WARREN, ARKANSAS

Its a Better Buy . .

At

BLEVIN'S

Complete Automobile Service

BLEVINS OIL CO. Phone 64

**SLOAN'S
DRUG STORE**

Saylor's—Whitman's
Candies

Our Fountain Service Is
The Best In Town

Phone 25

Arkadelphia, Arkansas

**Nickels, Dimes and Quarters
Make Dollars**

They Also Buy More

At

STERLING'S

The

5c, 10c and 25c Store

Arkadelphia, Arkansas

DRINK



CALENDAR OF EVENTS

January 9—Epstein is not such a had guy, except when he compares Teachers to Ouachita.

January 10—Winburn sure is worreid of late it couldn't be a blonde—or maybe a brunette.

January 11—I think I'd better start meeting classes exams are just 1½ weeks off.

January 12—Glenn Miller played for the "jitterbug jamboree" in the gym (you can't stop me from dreaming).

January 13—Or can you?

January 14—Sunday.
January 15—Who would have thought "Teeter" would be Company "A" sponsor.

January 16—I wonder if Marjorie keeps a light in the window for Dick every nite or just some nites—sounds kinda silly to me.

January 17—I'm at a loss for words.

January 18—Banks has settled down to a very cute "ball and chain."

January 19—Beans for dinner. Beans for supper.

January 20—Same ole drip with a little drizzle.

January 21—Sunday and the inevitable quiet hour.

January 22—Hustle and bustle and tangle or registration—Seligman is still looking for a snap.

January 23—Lights burn a little longer (50c). Halls are a little quieter. Fingernails grow a little shorter.

January 24—Exams have started.

January 25—More exams . . . worry . . . worry . . . worry.

January 26—Exams are over. The honor system somewhat twisted out of shape.

January 27—Now for some relaxation until this time next semester.

January 28—Sunday.

January 29—Classes again. Brand new interesting subjects—Wow.

January 30—Dean Witherington continues to spread thick layer of ? ? ? ? ?



Annual Architects



. . . applying to yearbook problems the same sound principles the architect uses
. . . working in cooperation with photographer, printer, and cover manufacturer to the benefit of the staff.

**PEERLESS
ENGRAVING CO.
LITTLE ROCK, ARK.**

ARTISTS · DESIGNERS · PHOTO-ENGRAVERS

MC'S CAFE

We Never Close

TRAILWAY BUS TERMINAL

Phone 148

Arkadelphia, Arkansas

**HOUSER
MOTOR SERVICE**

Sinclair Products
Packard

Arkadelphia, Arkansas
Phone 143

Compliments of

**SNODGRASS & BRACY
DRUG CO.**

Little Rock, Arkansas

Compliments of

**RUDOLPH FURNITURE
COMPANY**

A Reliable Store For
Reliable People

Arkadelphia, Arkansas

Compliments of

SILBERNAGEL & CO.

PINE BLUFF
FORT SMITH
LITTLE ROCK
DERMOTT
ARKANSAS

THE OUACHITONIAN STAFF
EXPRESSES APPRECIATION TO

Thompson Studio

FOR PROMPT AND EFFICIENT

Photography

★ ★ ★ ★ ★

SPECIALISTS IN PORTRAIT WORK

★ ★ ★ ★ ★

Main Street, Arkadelphia, Arkansas

CALENDAR OF EVENTS

January 31—"Suction" leader Adams is still going strong . . . without a straw too.

February 1—We trimmed Magnolia 57-29.

February 2—Tech fell tonite under the Goodwin and Vannoy sharpshooting.

February 3—Rifle Club have quail supper at the Tavern.

February 4—Sunday.

February 5—Hendrix a victim for the second time.

February 6—Teachers wins by narrow margin to defeat the Tigers for the first time in state competition.

February 7—I. R. have pork supper.

February 8—Abbott is again featuring his song "I cried for you" that he made so popular last year.

February 9—The Reddies were hot tonite for a change.

February 10—Kewpies have valentine party at Tavern. Abbott was there.

February 11—Sunday.

February 12—One of those days.

February 13—Was it Valentine's Day coming up that brought Jack Swain out last week or has the man really changed.

February 14—Today is a day for LOVE (whats the matter with the rest of the days?)

February 15—Shipp has been religiously attending band practice since Aileen wanted to learn to play the drums.

February 16—Oh! Johnny! Scores foul shot to beat the Woodson "Woes" . . . were they burned up? S. A. S. have rural party at the community club.

February 17—The "Casino Club" has been closed by local authorities, Pro Stewart announced today.

February 18—Sunday.

February 19—Another good bull-session night.

February 20—Reddies are hot again for the second time this season . . . it's funny to me that they should be hot on the particular nights they play us.

February 21—Confucius say, Henderson only win from Ouachita . . . Ouachita only lose to Henderson.

February 22—Confucius say, CENSORED.

February 23—Debaters are disappointed because there si no dance . . . can't say as I blame them much.

February 24—O' association have "pig" roast at the city park.

February 25—Sunday.

February 26—Griffin ain't so hot with his Ted Malone gab.

February 27—Its been rumored that Frances has "Nubbin" washes dishes already.

February 28—Tigers take the one time beaten Panthers 58-47.

February 29—Berry on the Democrat all-state quintet.

March 1—Everyone thinks "Sody" has found the right gal at last.

March 2—Mr. Swor has quite a sway it seems.

March 3—Sunday.

March 4—The Tigers are off to the A. A. U.

March 5—The Tigers are back after reaching the semi-finals.

March 6—The band gives concert in the Little Theatre and was thoroughly appreciated (it's about time).

March 7—Dean Witherington has been of late putting Pro and his yarns in the shade.

March 8—Same ole story . . . everyone has a date but me.

March 9—Red Shirts have gala affair at the Eastman Hotel.

March 10—Sunday.

March 11—Spring football practice starts today.

March 12—It looks as if Johnny Hall may get a steady girl yet . . . he has had terrible luck so far.

March 13—Goodwin and Berry are selected on the all-tournament five.

March 14—Freshmen girl show rare forms in beating the seniors at basketball.

March 15—What I'd like to know is why they call Hampton "Jimmy O. G. Hampton."

March 16—You know it's a miracle what romance a girl holds for a boy with a car.

March 17—What mean ole boy shot "calling CQ" between the insulators.

March 18—The Ouachitonian goes to press.