



Organizations

RILEY LIBRARY
OUACHITA BAPTIST UNIVERSITY



TREBLE CLEF CLUB



EVELYN BOWDEN	<i>President</i>
MARGARET MCCARROLL	<i>Vice-President</i>
ELIZABETH DANIEL	<i>Secretary-Treasurer</i>
ANNE HUMPHREY	<i>Reporter</i>
MARIE PATTERSON	<i>Librarian</i>
MISS FLORENCE EVANS	<i>Director</i>
MISS FAY HOLIMAN	<i>Pianist</i>

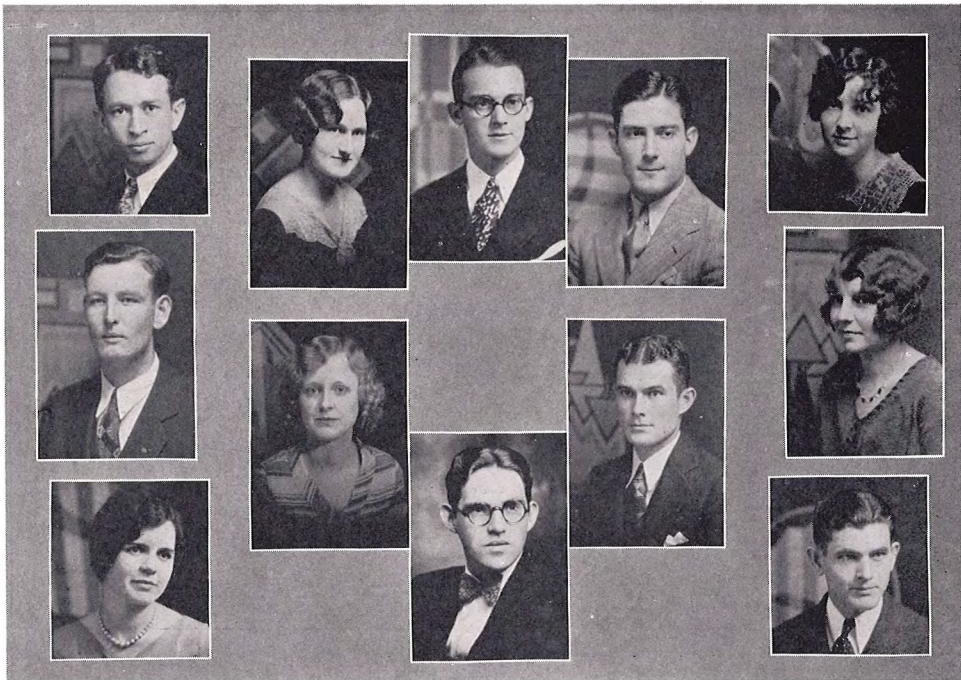
MEMBERS

MIRIAM ECHOLS
 NELLIE MAE FORD
 HAZEL JEAN HEARD
 MARLYS ROMUNDER
 RUTH SHAVER
 SARAH HARDAGE
 LOIS FERGUSON
 KATHRYN DANIEL
 LEONITA JAMISON

FRANCES KING
 JOSEPHINE HARRIS
 ESTELLE BRITT
 WILLENE HINSLEY
 MILDRED DISHONGH
 MARTHA WINBURN
 FRANCES BENTON
 GLADYS STEVENSON
 MABEL CRUTCHER



1920 Ouachitonian 1920



B. S. U. COUNCIL



CECIL SHUFFIELD	<i>President</i>
ELMA COBB	<i>First Vice-President</i>
CHARLES HOLT	<i>Second Vice-President</i>
HAROLD TILLMAN	<i>Third Vice-President</i>
MARLYS ROMUNDER	<i>Secretary</i>
JUSTUS MATLOCK	<i>Treasurer</i>
AGNES MOSLEY	<i>Y. W. A. Representative</i>
CLARICE McDANIEL	<i>Sunday School Representative</i>
WILLIA INGRAM	<i>B. Y. P. U. Representative</i>
SHEPHERD RICE	<i>Ministerial Association Representative</i>
THOMAS REAGAN	<i>Life Service Band Representative</i>
DR. T. C. ALLEN	<i>Faculty Member</i>





STUDENT COUNCIL



MARGARET MCCARROLL	<i>President</i>
LILLIE MAE MOORE	<i>Vice-President</i>
HELEN YOUNG	<i>Secretary</i>
RUTH FLORA	<i>Treasurer</i>
ELMA COBB	<i>Senior Representative</i>
MARLYS ROMUNDER	<i>Senior Representative</i>
TUCKER BRYANT	<i>Junior Representative</i>
FRANCES BENTON	<i>Sophomore Representative</i>
KATHRYN DANIEL	<i>Freshman Representative</i>





OUACHITA PLAYERS



MARTHA VIRGINIA STUART	President
CHARLES S. HOLT, JR.	Recording Secretary
LUCILLE ALLMON	Vice-President
NEILL SLOAN, JR.	Treasurer
MARTHA JEAN WINBURN	Press Agent
CECIL SHUFFIELD	Business Manager
HAZEL SAMPLE	Corresponding Secretary
MISS EVELYN BOZEMAN	Sponsor

The Ouachita Players, for the third year under the direction of Miss Evelyn Bozeman, enjoyed its most successful year. Regular meetings were held, at which meetings short plays, directed by students of Miss Bozeman, were presented.

The Club elected "The Drunkard," a thrilling melodrama of the nineteenth century, as its long play. This was a very difficult presentation, there being five acts and eighteen scenes, and the characterizations being exceeding trying. It was given in the College Auditorium shortly before Christmas; later at Little Rock in the Little Theatre Contest; then at Malvern. The cast acquitted itself splendidly on all occasions, and the excellence of the play spoke for the excellence of the direction.



1920 Ouachitonia 1920





PI KAPPA DELTA



OPIE ESKRIDGE *President*

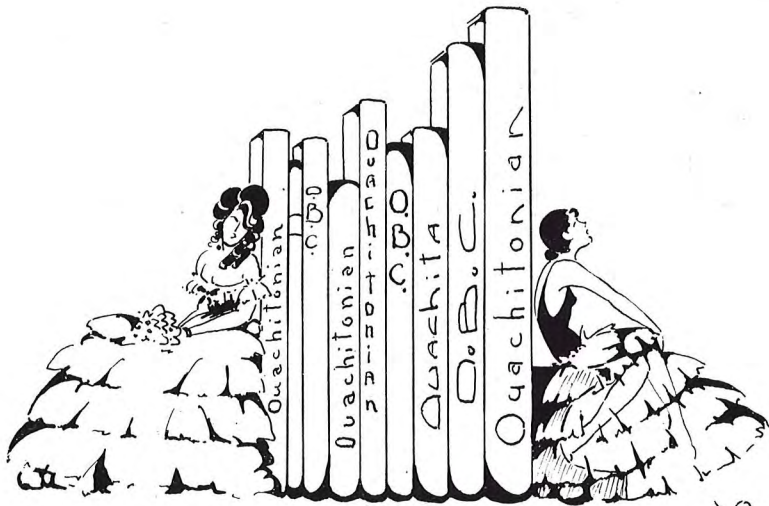
DR. R. D. HIGHFILL *Sponsor*

H. W. McMILLAN
 LONNIE MEACHUM
 JUSTUS MATLOCK
 LUCILLE ALLMON

T. M. JONES
 RICHARD JOHNSON
 MARTHA JEAN WINBURN

The Pi Kappa Delta is a national forensic organization that promotes Debate, Oratory, and Extemporaneous Speaking. Debate and Oratory are the oldest student activities on the campus. Contestants are sent each year to National, Sectional and State Tournaments. The feature of the forensic year of 1930, was a Radio Debate, the first ever to be held in Arkansas.





Publications

slay.



THE OUACHITA SIGNAL



J. B. WILSON *Editor-in-Chief*
 EVANDER L. MOSLEY *Business Manager*

Under the supervision of a faculty-student Publications Board and managed by capable editors and an efficient staff the Ouachita Signal improved remarkably during the year 1929-1930. With a well balanced arrangement of a variety of news and feature material the Signal presented, in each of its issues, a professional appearance uncommon in a college paper. Ouachita was also admitted to the Arkansas College Press Association, which will tend to bring the journalism students of our school into closer contact with those of other colleges, and to place the Signal on a competitive basis with Arkansas college and university publications.





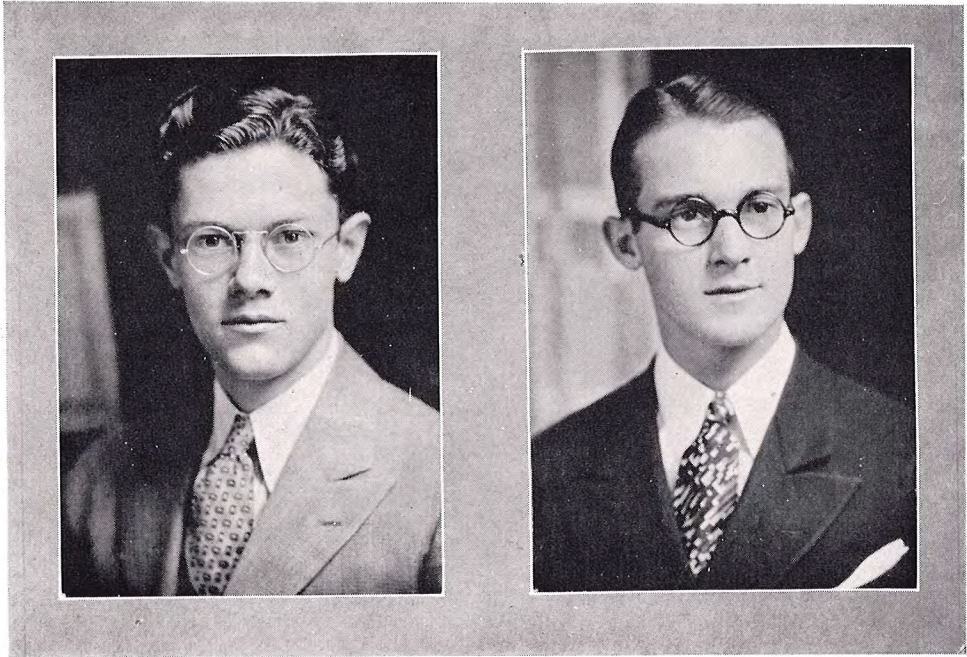
SIGNAL STAFF



WALTER OATHOUT	<i>Managing Editor</i>
ALLINE WESTMORELAND	<i>Local Editor</i>
ARLE E. QUEEN	<i>Proof Reader</i>
CRYSTAL YOUNG	<i>Special Writer</i>
OPIE ESKRIDGE	<i>Assistant Business Manager</i>
CLAY BRAZIL	<i>Sports Editor</i>
LUCILLE ALLMON	<i>Society Editor</i>
MARTHA JEAN WINBURN	<i>Associate Editor</i>
J. RAYMOND BAINE	<i>Feature Editor</i>
WYBLE WIMBERLY	<i>Exchange Editor</i>
G. B. COLVIN	<i>Circulation Manager</i>
CLAUD SIBERT	<i>Assistant Circulation Manager</i>
HAZEL SAMPLE	<i>Special Writer</i>



1930 Ouachitonian 1930



THE OUACHITONIAN



J. RAYMOND BAINE *Editor-in-Chief*
CECIL E. SHUFFIELD *Business Manager*

We, the staff, respectfully submit the 1930 Ouachitonian for your approval. We hope you like it, and we believe you will. We have labored long and without ceasing in the effort to catch the true spirit of Ouachita, and, insofar as it was possible, to place this spirit within the confines of this volume.

We have listened to myraids of suggestions, heeded those we deemed worthy, and cast aside as chaff those we deemed unworthy. If, perchance, you do not like our book, we are sorry, but we offer you no apologies, nor do we give you any sympathy. The world is wide, paper is cheap, and you have the privilege of composing your own annual. If you do like our book, we are your friends and will always be so.

—The Editor.





THE OUACHITONIAN STAFF



NEILL SLOAN, JR.	<i>Art Editor</i>
ALLINE WESTMORELAND	<i>Assistant Editor</i>
HELEN YOUNG	<i>Assistant Editor</i>
WALTER OATHOUT	<i>Assistant Business Manager</i>
CLAY BRAZIL	<i>Sports Editor</i>
WYBLE WIMBERLY	<i>Associate Editor</i>
LUCILLE ALLMON	<i>Class Editor</i>
HAZEL SAMPLE	<i>Organization Editor</i>
J. B. WILSON	<i>Feature Editor</i>





PUBLICATIONS COMMITTEE



DR. R. D. HIGHFILL, *Chairman*

R. T. HARRELSON

E. H. ANDERSON

E. A. PROVINÉ

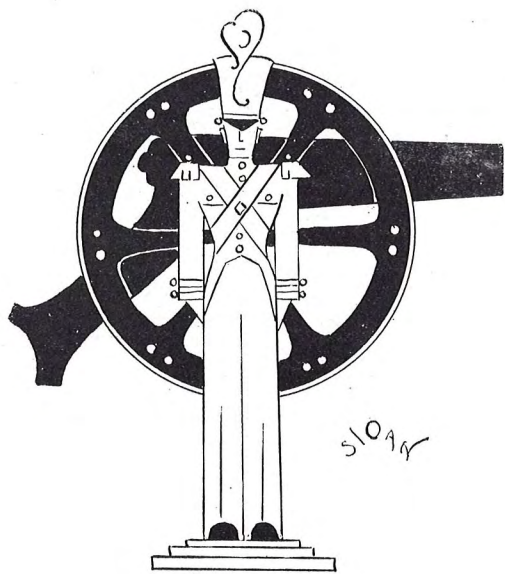
BASIL MUNN

CRYSTAL YOUNG

OPIE ESKRIDGE

The Publications Board is the new system of control for the student publications in Ouachita College. It has complete supervision over the newspaper and yearbook. This plan has been tried and its efficiency proven in many of the larger schools and it has enjoyed equal success in Ouachita. The Board is a self-perpetuating body composed of four faculty members and three students.





SLOAN

John



R. O. T. C.



CAPTAIN WARFIELD M. LEWIS, U. S. A.

Commandant

Professor of Military Science and Tactics

CAPTAIN FRANK G. POTTS, U. S. A.

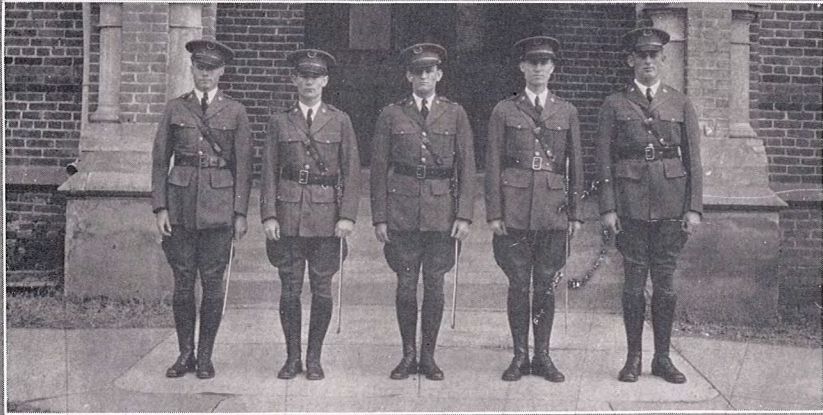
Assistant Professor of Military Science and Tactics

FIRST SERGEANT JOHN MAURER, D. E. M. L., U. S. A.

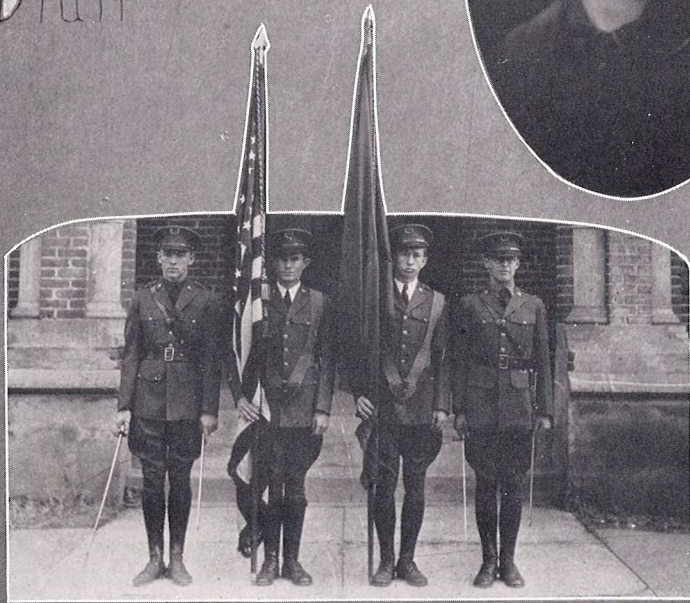
Assistant in Military Science and Tactics

The R. O. T. C. consists of two courses, the basic and the advanced, each course extending over two years. The work is practical, and of much benefit to these students. At the end of the first year advanced work the students attend a six weeks summer camp, where they receive intensive training in military science and tactics.

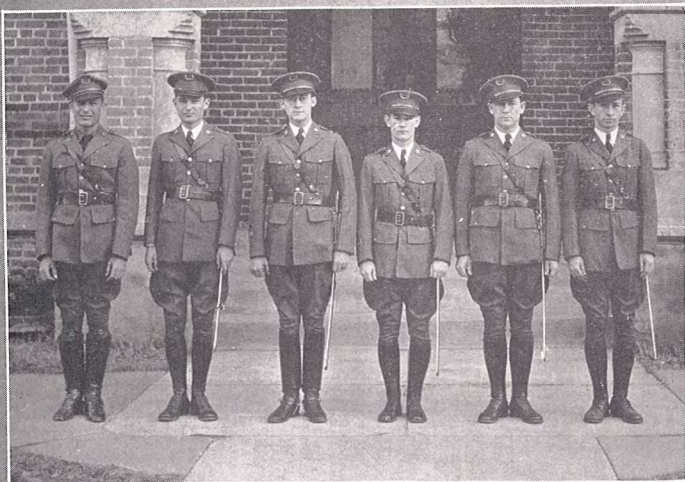
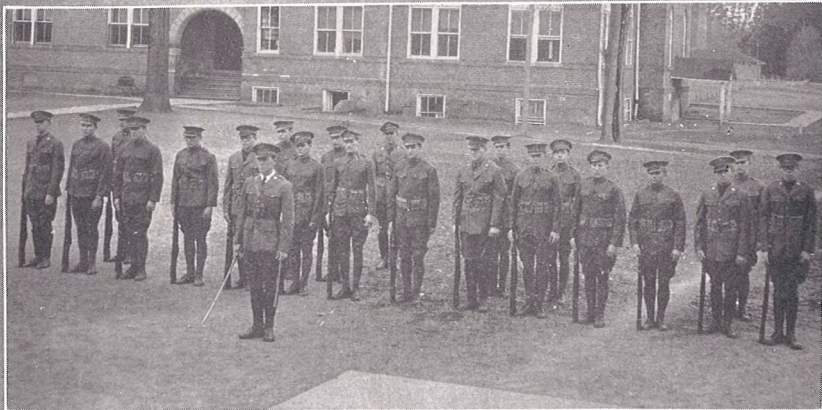
At the completion of the course the cadets are commissioned as Second Lieutenants in the Officers' Reserve Corps. Scholastic credit is allowed on the R. O. T. C. work, and the advanced cadets are allowed ration money for their services.



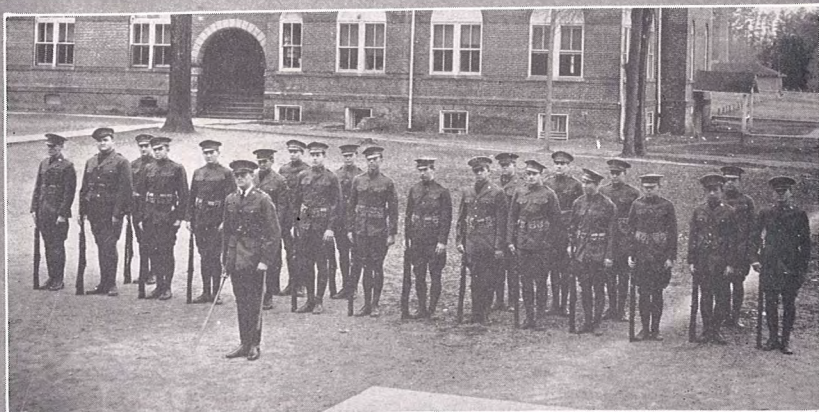
Battalion
Staff



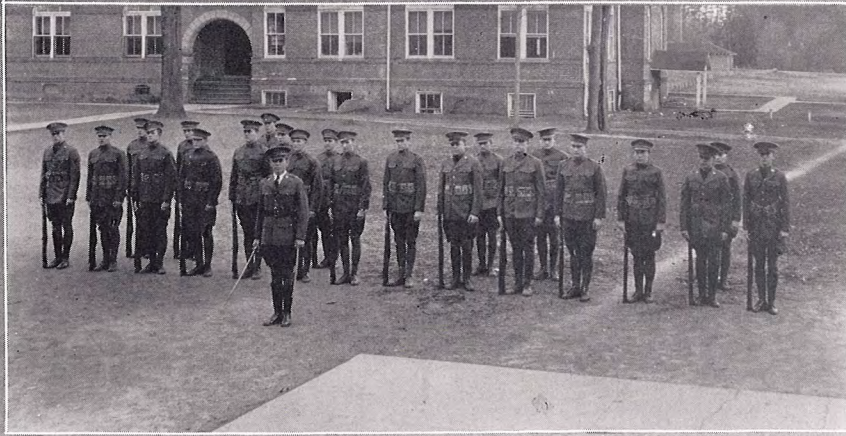
1920 Ouachitonian 1925



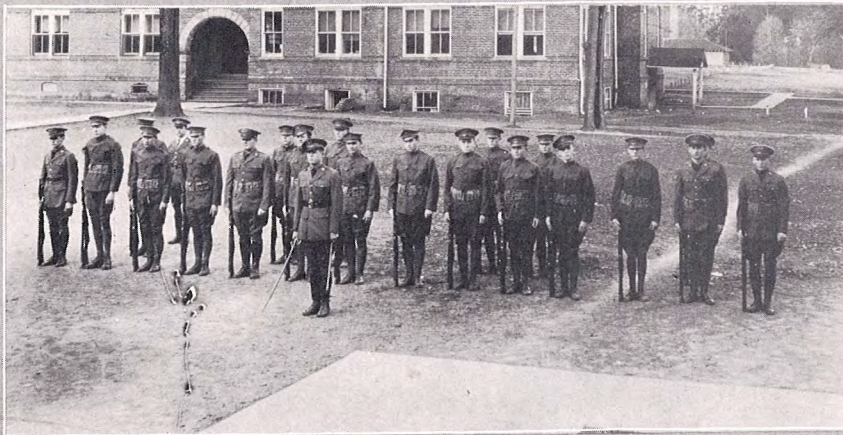
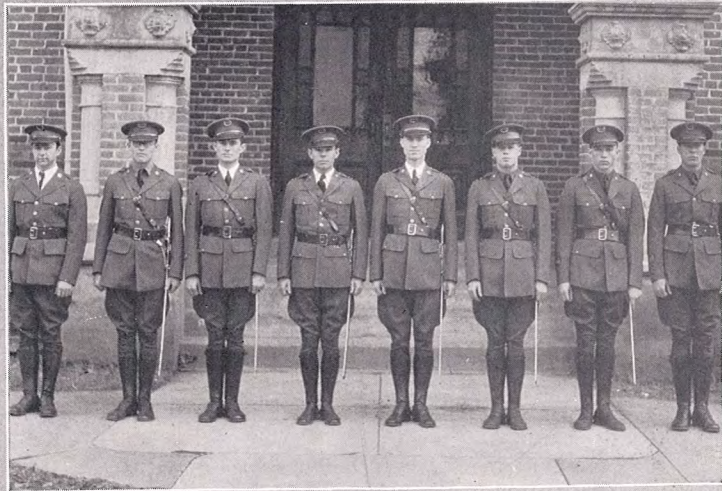
C. O.
A



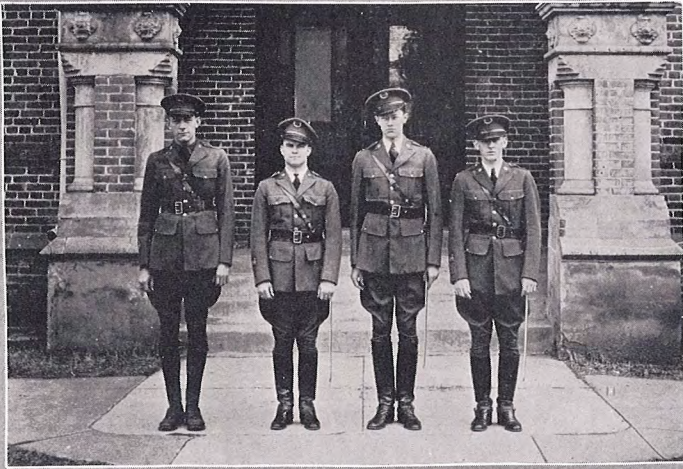
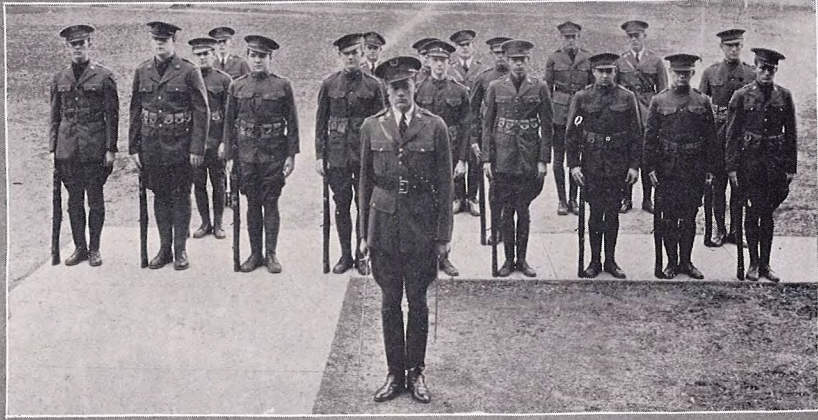
1920 Ouachitonian 1920



C.
B.

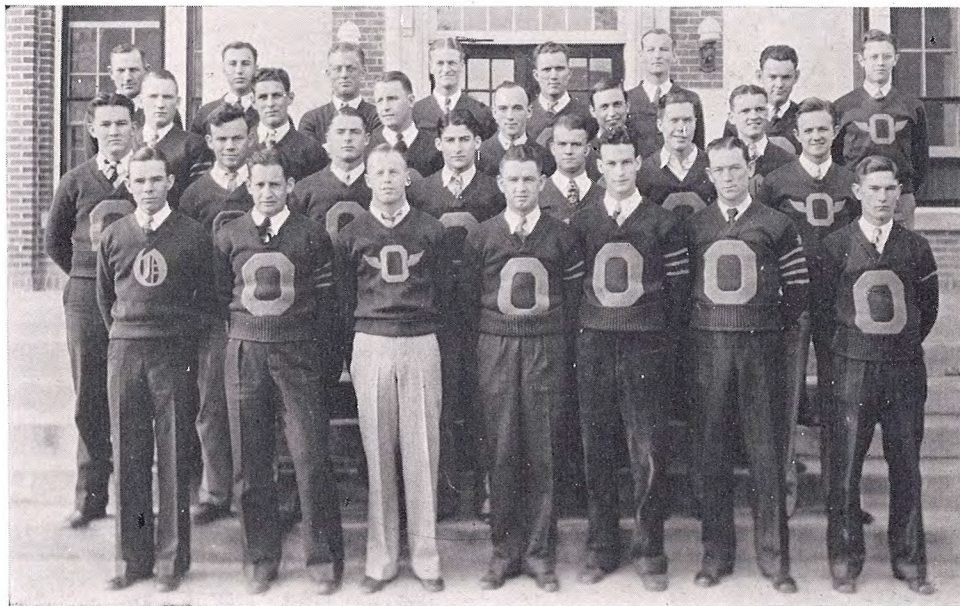


1920 Ouachitonian 1920



Hdqrs
Plat





"O" ASSOCIATION

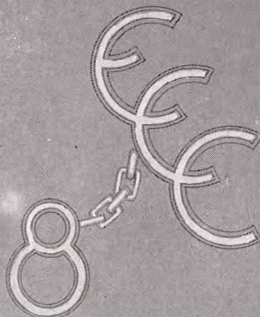


COLLINS PERRY	<i>President</i>
BERNICE E. GILL	<i>Vice-President</i>
WILLIAM McMILLAN	<i>Secretary-Treasurer</i>
HARLEY J. HALLETT	<i>Historian</i>
ROBERT MOORE	<i>Sergeant-at-Arms</i>

The "O" Association is an organization of men who have won their varsity "O" in competition in any form of athletics. Its purpose is to maintain a high standard of athletics and to help in bringing desirable men to Ouachita. Records are kept of past achievements, to keep alive the traditions of teams of the past.



1920 Ouachitonia 1920



1930 Ouachitonian 1930

Kewpie Follies Hall of Fame



Finlayson



Barbara Brown

Babbie



Little Moore



Elizabeth

Greaser



Fairbairn

Colette



Ambrose

Rever



Elizabeth

Joey



Snow

Figure



Monroe

Carpetter



Lydia

Green



Mildred

Pipster



Virginia

Carroll

S/O/N



W. C. F.



MARGARET MCCARROLL
RUTH FLORA
HELEN YOUNG
MARLYS ROMUNDER
ETHEL MAE FORTSON
GRACE LEE REEDER
NELL TATUM
MARTHA ELLEN SAIN





PSI SIGMA PHI

(Local Chapter)



LAST KNIGHTS

JAMES BREWER
ROBERT YOUNG

CECIL SHUFFIELD
CHARLES HOLT
J. B. WILSON

BERNICE GILL
J. RAYMOND BAINÉ

MID-KNIGHTS

WALTER OATHOUT
FRED SOUTHERLAND

EDGAR McCRARY
ROBERT IGLEHART
ROBERT COLLIE

TOMMY VAN DUYN
JULIAN WOOD

FIRST KNIGHTS

J. T. BOWDEN
JIMMIE JUSTISS
HOWARD WADDLE
EDWARD SCHOOLEY

JAMES CANTLEY
FARRIN GREENE
WILLIAM THOMAS
CLAUDE SIBERT
PAUL ELLEDGE

JOE FRED LUCK
PRESTON REYNOLDS
JULIAN GLOVER
ARLEN JONES





SONS AND DAUGHTERS CLUB



- James Brewer, Elma Cobb, Mrs. Estelle McMillan Blake, Sponsor, Flora D. McDonald, William Nowlin.
- William McMillan, Lucille Allmon, James Cone, James Milloway, Martha Virginia Stuart, Pettus Kincannon.
- Neill Sloan, Jr. Julia Beth Reeves, Jim Wright, Rose Hood, Martha Clark, Arle Queen.
- Thomas Reagan, Marion Baker, Martha Ellen Sain, Ann Humphrey, Thelma Rankin, Thurston Rankin.
- Justus Matlock, Bernard Daniel, Josephine Harris, Hansford Holt, Agnes Mosley, Evander Mosley, Herbert Morton.





SONS AND DAUGHTERS CLUB



Ben Haynes, Frances Benton, J. D. Cobb, Sara Hardage, Julian Wood, Inez Kirkpatrick, Edwin E. Nowlin.
 Fred Southerland, Helen Whitten, Glenda Pittman, Marguerite Murphy, Estelle Britt, Julian Glover.
 John Evans Meador, Frances Meador, Juanita Mosley, Sue Merle Hinsley, Marguerite Woodul, Gerald Berry.
 Paul Holt, Adelle Pittman, Willene Hinsley, Whitfield Cannon, Helen Harrelson, Joe Fred Luck.
 Curtice Rankin, Beth Remley, Max Smith, Mabel Crutcher, Alva C. Harris, Jr., Mildred Watkins, Noel Adams.



MINISTERIAL ASSOCIATION



TRUETT BLACKMON *President First Quarter*
P. J. CROWDER *President Second Quarter*
LONNIE MEACHUM *President Third Quarter*
SHEPHERD RICE *President Fourth Quarter*

JAMES BREWER
WITHROW HOLLAND
RICHARD JOHNSON
THOMAS REAGAN
HAROLD TILLMAN
SAM ED BRADLEY

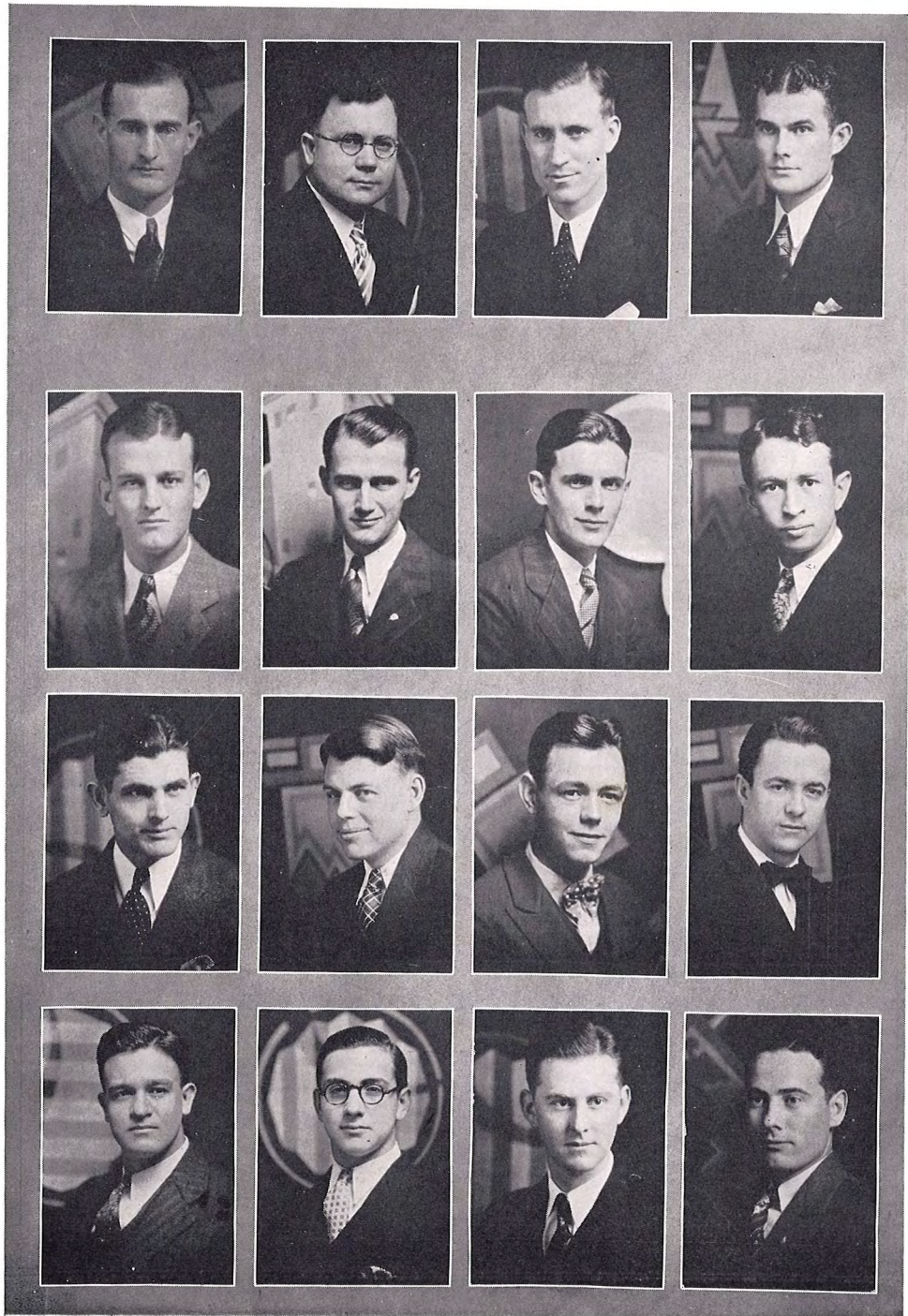
PAUL ELLEDGE
BARTON DOWDY
TROY V. WHEELER
RAYMOND CULP
HERBERT MORTON
HARVEY MCGRAW

“The original thought that put Ouachita College into existence was an educated ministry and it is that thought today—educated ministry. A man cannot tell when he does not know; that is why you are here in school and expected to go forward and tell people.” Although the ministerial students are a small part of the student body and in spite of the fact that they are fewer in number than in former years, this organization still endeavors to help Ouachita to reach her original objective.

Of the twenty-three members ten are regular pastors. The other members do supply work as well as work in local religious organizations. In addition to its regular meetings, the association sponsors Consecration Week. During the summer months these students hold revival meetings, winning many souls to Christ.



1920 Ouachitonian 1920





LIFE SERVICE BAND



HAROLD TILLMAN
 TRUETT BLACKMON
 CLARICE McDANIEL
 LONNIE MEACHUM
 ELMA COBB
 THOMAS REAGAN
 EVANDER MOSLEY

WITHROW HOLLAND
 RICHARD JOHNSON
 NELLIE MAE FORD
 HARVEY MCGRAW
 P. J. CROWDER
 AGNES MOSLEY
 SAM ED BRADLEY

TROY V. WHEELER
 PAUL ELLEDGE
 JUANITA MOSLEY
 WILLIE LEE BARTLETT
 RAYMOND CULP
 HAROLD COGGINS
 DR. T. C. ALLEN

The Life Service Band is a student organization for the promotion of a greater feeling of spiritual interest and teaching among students who are interested in Mission work or in Christian education at home or abroad. It is composed of Ministerial students and other serious-minded young men and women who are interested in promoting Christianity. It fills a needed demand on our campus, and many of its former members are now enrolled in our great seminaries, or in other schools of special training along that line. This organization, along with the Ministerial Association, is doing a great deal of good each year in sponsoring our traditional Consecration Week.



1920 Ouachitonian 1920



SCHOLARSHIP SOCIETY OF THE SOUTH



BILLY NOWLIN *President*

RUTH FLORA

ROBERT COLLIE

LUCILLE ALLMON

NEVA BENNETT

MARGARET MCCARROLL

EVELYN BOWDEN

NEILL SLOAN

AGNES MOSLEY

MAURICE VICK





Y. W. A.

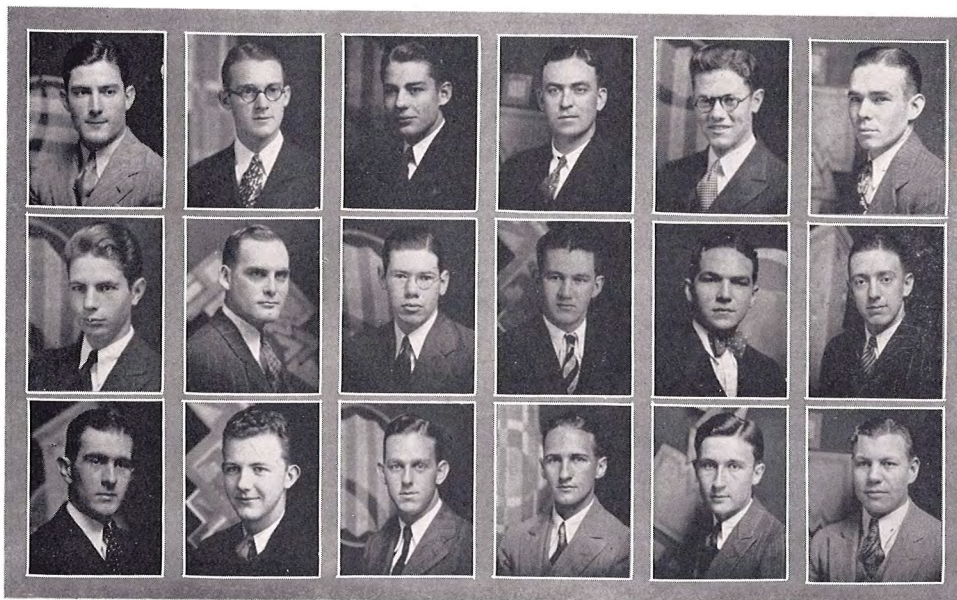


ELMA CORR	<i>President, First Half</i>
MARLYS ROMUNDER	<i>President, Second Half</i>
MRS. ESTELLE McMILLAN BLAKE	<i>Sponsor</i>

The Ouachita Y. W. A. was organized in 1911, at which time Mrs. Blake was elected counsellor. As everyone all over the state knows, Mrs. Blake is a faithful and inspiring leader; in this position, as in every other that she fills, she has won the respect and love of all who come in contact with her.

All the girls in Cone-Bottoms Hall are members of this organization. The programs are inspirational and educational, being based upon missions and Baptist work. Officers are elected twice a year; these officers form the cabinet, which meets once each month to attend to the business and pray for the advancement of the Kingdom work. The Y. W. A. watchword is, "And they that be wise shall shine as the brightness of the firmament, and they that turn many to righteousness as the stars forever and ever."—Daniel 12:3.





PRE-MED CLUB



CHARLES S. HOLT, JR. *President*

CECIL SHUFFIELD
TOMMY VAN DUYN
W. C. HOBGOOD
J. RAYMOND BAINE
EDWIN H. BYRD
HANSFORD HOLT
FINIS WYATT
JAMES ELKINS

ARTHUR HICKS
HOWARD WADDLE
HARRY CALLEY
EDGAR MCCRARY
ALVA C. HARRIS, JR.
DAN DULL
EDWARD L. STONE
BILL THOMAS

THOMAS COATS





PI GAMMA MU



PRO. C. E. ARNETT

Sponsor

J. B. WILSON
 WILLIAM NOWLIN
 WILLIAM McMILLAN
 IRA ROGERS
 NEVA BENNETT
 MRS. MIRIAM ECHOLS
 RUTH FLORA
 JUSTUS MATLOCK
 WALTER OATHOUT
 TEDDY JONES

ALVIE ROGERS
 HIRAM HALL
 ANN HUMPHREY
 TRUETT BLACKMON
 EVANDER MOSLEY
 RICHARD JONES
 SAM ED BRADLEY
 GRACE MILLSAPS
 ROSE HOOD
 WITHROW HOLLAND

OPIE ESKRIDGE





MIEN'S GLEE CLUB



J. RAYMOND BAINE	<i>President</i>
WITHROW HOLLAND	<i>Vice-President</i>
CECIL SHUFFIELD	<i>Business Manager</i>
ARLE QUEEN	<i>Reporter</i>
JIMMIE JUSTISS	<i>Librarian</i>
MISS FLORENCE EVANS	<i>Director</i>
MISS FAY HOLIMAN	<i>Accompanist</i>

ROBERT WISE	PAUL ELLEDGE	RAYMOND CULP
J. T. STOCKS	TROY WHEELER	TOM BROWN
BERNARD DANIEL	FRED SOUTHERLAND	ROBERT BOYD
JULIAN WOOD	JOHN EVANS MEADOR	RALPH WILLIAMS
HARVEY MCGRAW	HOWARD WADDLE	HARRY SYKES
B. W. MCCORMICK	EARL BAXTER	BOBBY WOOD





ALPHA
KAPPA



1920 Ouachitonian 1920





Corinnean



1920 Ouachitonian 1920



C. L. S.



1920 Ouachitonian 1920

