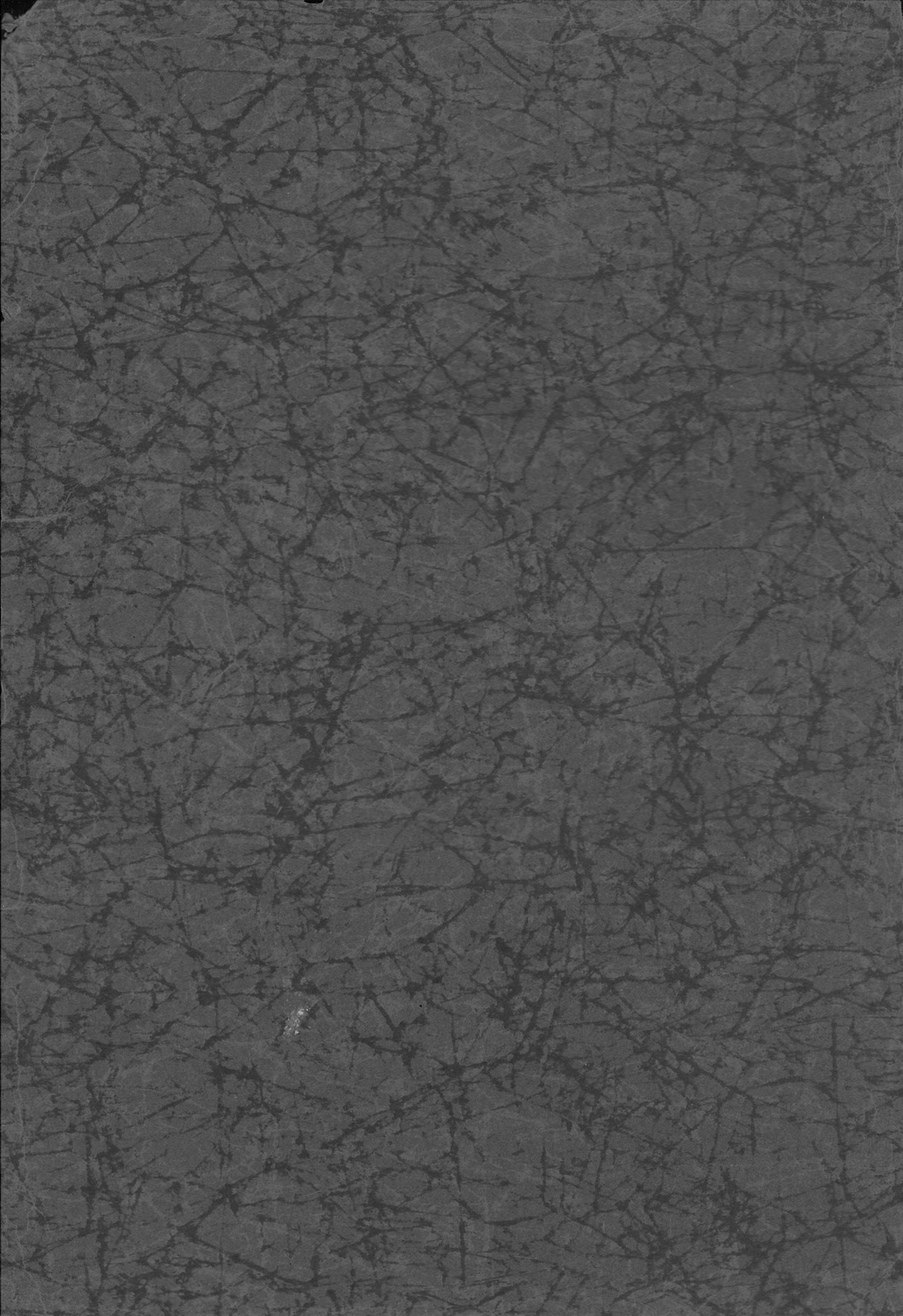


Quachitonian

1930









**The
Ouachitonian
1930**

PHOTOGRAPHING BY
THOMPSON'S STUDIO
ARKADELPHIA, ARKANSAS

ENGRAVING BY
PEERLESS ENGRAVING COMPANY
LITTLE ROCK, ARKANSAS

PRINTING BY
RUSSELLVILLE PRINTING COMPANY
RUSSELLVILLE, ARKANSAS



The
Ouachitonian

==
1930
==

Published by the Students
of
Ouachita College
Arkadelphia, Ark.

RILEY LIBRARY
OUACHITA BAPTIST UNIVERSITY

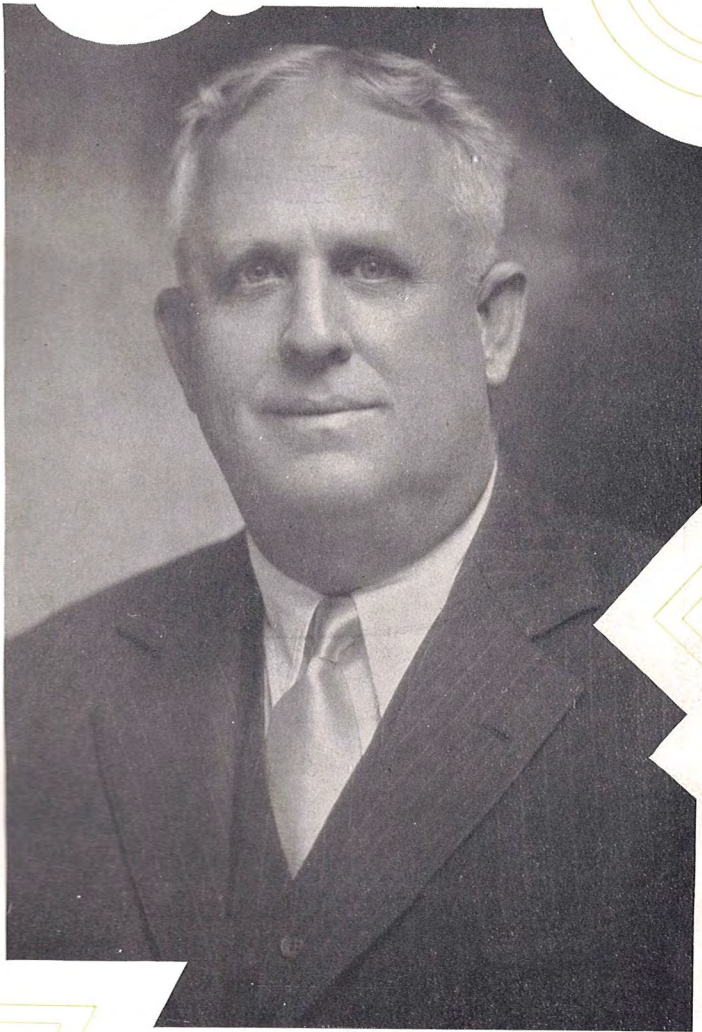


DEDICATION

Mr. W. N. Adams was elected as a member of the Ouachita Board of Trustees at the age of nineteen. From that time until his removal to New Orleans in June, 1929, he served continually as an active member of the Board.

For a period of fifteen years Mr. Adams was President of the Board. During that time Ouachita eliminated the Preparatory Department and strengthened the College of Liberal Arts; Cone Bottoms Hall and the College Dining Hall and the Athletic Stadium were erected. Before his retirement the endowment was more than half a million dollars and Ouachita was admitted to membership in the North Central Association of Colleges and Secondary Schools.

With appreciation for the untiring efforts and constructive plans and lasting achievements of this devoted and ever loyal Ouachita friend the 1930 Ouachitionian is gratefully dedicated.



MR. W. N. ADAMS

73028



FOREWORD

This volume has been compiled so that in future years you may relive the happy days at college.

May it call forth a smile and a tear to mingle with the memories of a closed chapter.



CONTENTS

- I. THE CAMPUS
- II. THE ADMINISTRATION
- III. THE CLASSES
- IV. ATHLETICS
- V. FEATURES
- VI. ORGANIZATIONS
- VII. VIGNETTE OF O. B. C.'s
HISTORY



COPYRIGHT 1930

J. RAYMOND BAINÉ
EDITOR-IN-CHIEF

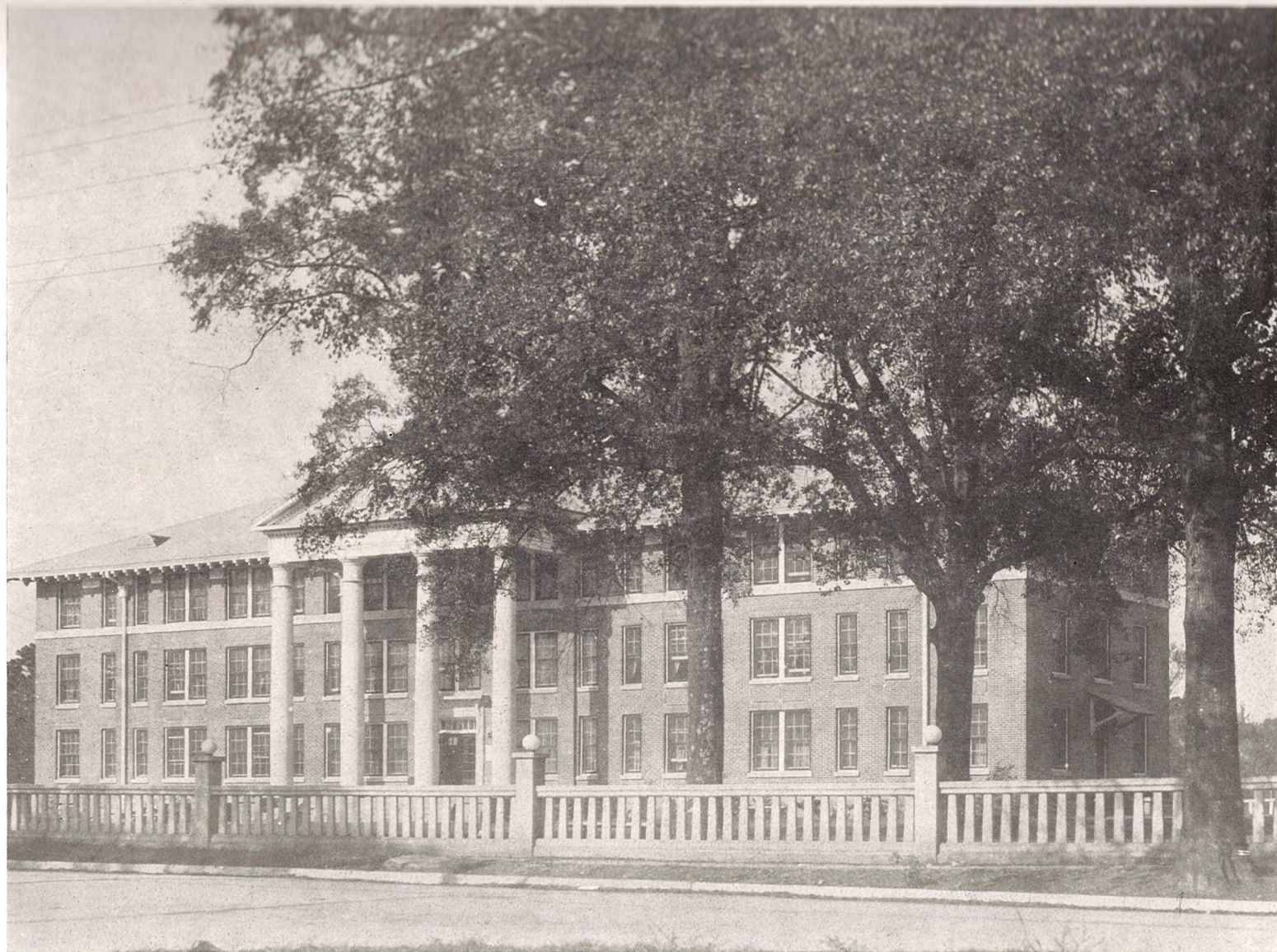
CECIL E. SHUFFIELD
BUSINESS
MANAGER



River Scene



Administration Building



Women's Dormitory



Men's Dormitory



President's Home



Snow Scene



Administration

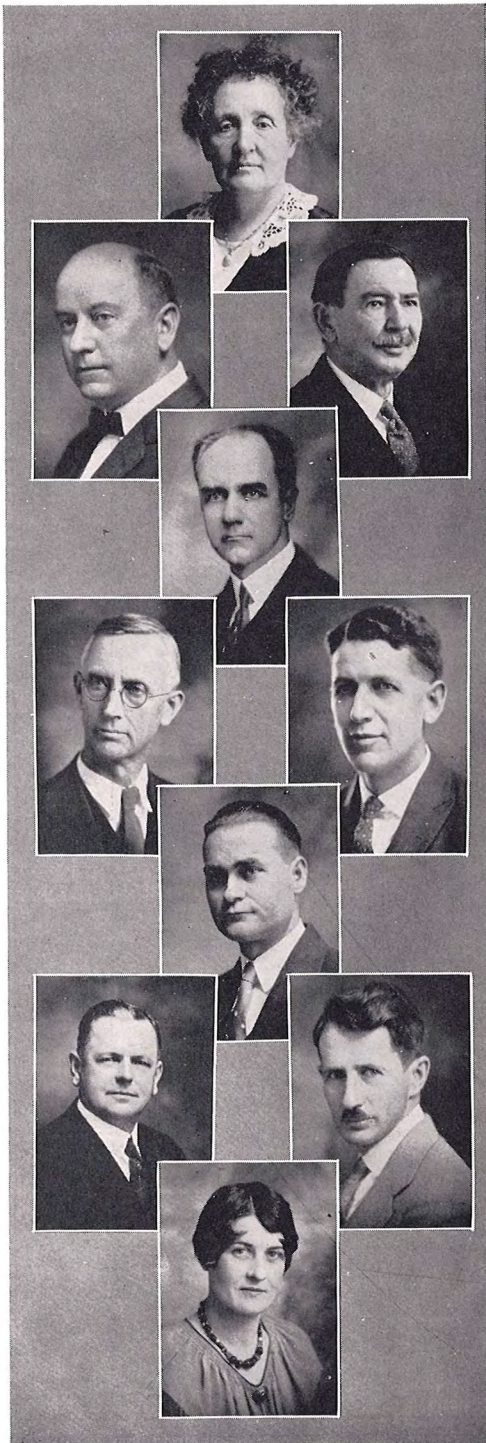
1900 Ouachitonian 1905



DR. C. D. JOHNSON
PRESIDENT



FACULTY



MRS. ESTELLE McMILLAN BLAKE
Assistant Professor of English

LIVINGSTON H. MITCHELL
Director of Conservatory
Professor of Piano

PETER ZELLARS, M. A.
Professor of Greek and Latin

T. D. BROWN, Th. D.
Professor of Religious Education

B. F. CONDRAV, Ph. M., LL. D.
Professor of Education

CLARENCE E. ARNETT, M. A.
Professor of History and Political Science

ROBERT D. HIGHFILL, Ph. D.
Professor of English

PAUL E. WHITEHOUSE, M. A.
Professor of Modern Languages

EARLE AUGUSTUS SPESSARD, Ph. D.
Professor of Biology

MISS EMILY BLAKE, B. A.
Instructor in Physical Education

FACULTY

E. H. ANDERSON, B. S., M. B. A.
Professor of Business Administration

GRACE HAMILTON, B. A.
Instructor of Modern Languages

LOUISE CLAYTON, M. A.
Assistant Professor in History and
Political Science

WILLIAM F. DEUSINGER
Professor of Violin and Theory

EVELYN D. BOZEMAN, B. O. E.
Director of Department of Speech

FLORENCE F. EVANS, B. M.
Professor of Voice and Director
of Glee Clubs

MAE FOSTER, M. A.
Dean of Women and Assistant
Professor of English

THOMAS C. ALLEN, Th. D.
Associate Professor of Religious
Education

E. A. PROVINCE, M. S.
Professor of Chemistry and Physics

LAURA BRANT, Ph. D.
Professor of Mathematics



FACULTY

FOY H. HAMMONS, B. A.
Director of Physical Education

SYBIL GOLDSMITH, M. A.
Assistant Dean of Women
Assistant Professor of English

FAY HOLIMAN, B. A.
Instructor in Piano and Organ

WILLIAM C. BRASHER, B. A.
Assistant Director of Physical Education

FRANCES CRAWFORD, B. A.
Secretary to the President

LOIS HOLLIDAY, B. L. S.
Librarian

MRS. PATTERSON
Nurse

R. T. HARRELSON
Business Manager

CURTIS PULLIG, B. A.
Dean of Men

J. ROBERT MACKEY
Superintendent of Buildings and Grounds

