

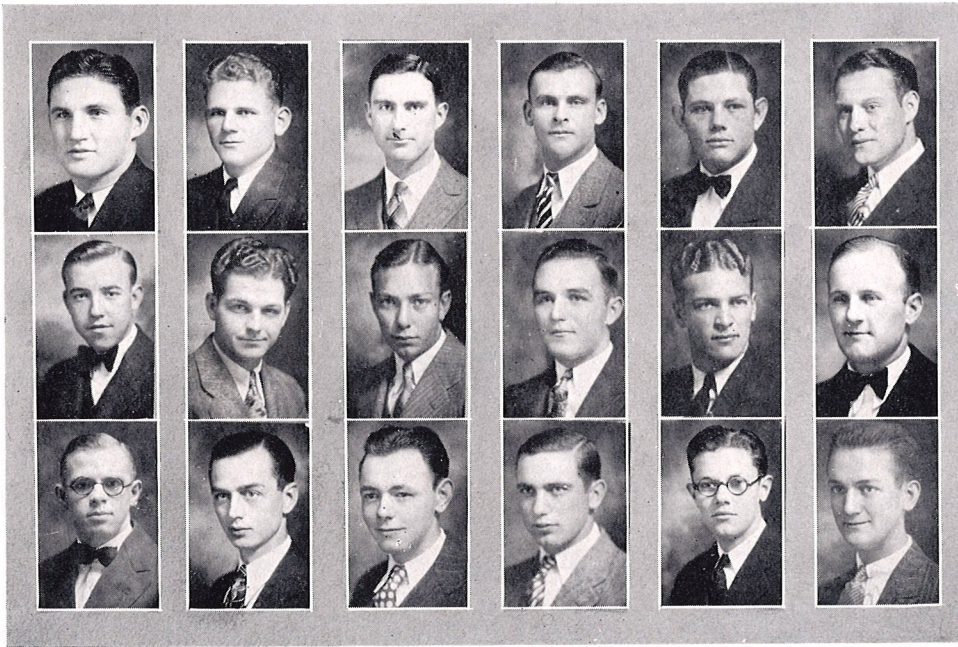
The Little Rock Club

OFFICERS

KEARNS HOWARD *President*
 BEATRICE ROGERS *Vice-President*
 LUCILLE SANGSTER *Secretary*
 JUSTUS MATLOCK *Treasurer*

MEMBERS

| | |
|-------------------|---------------|
| LA VERNE BELL | BERNICE HOFF |
| KATHERINE PITTMAN | ROSE HOOD |
| EUGENE HENDERSON | OCTAVIA WATTS |
| ANNE HUMPHREYS | MAMIE ROWLAND |



The Masonic-DeMolay Club

MASONS

WILLIAM BUCHANAN
MARION FERGUSON

DANNY DEEVERS
THURSTON RANKIN
LELAND HILL (*32 degree*)

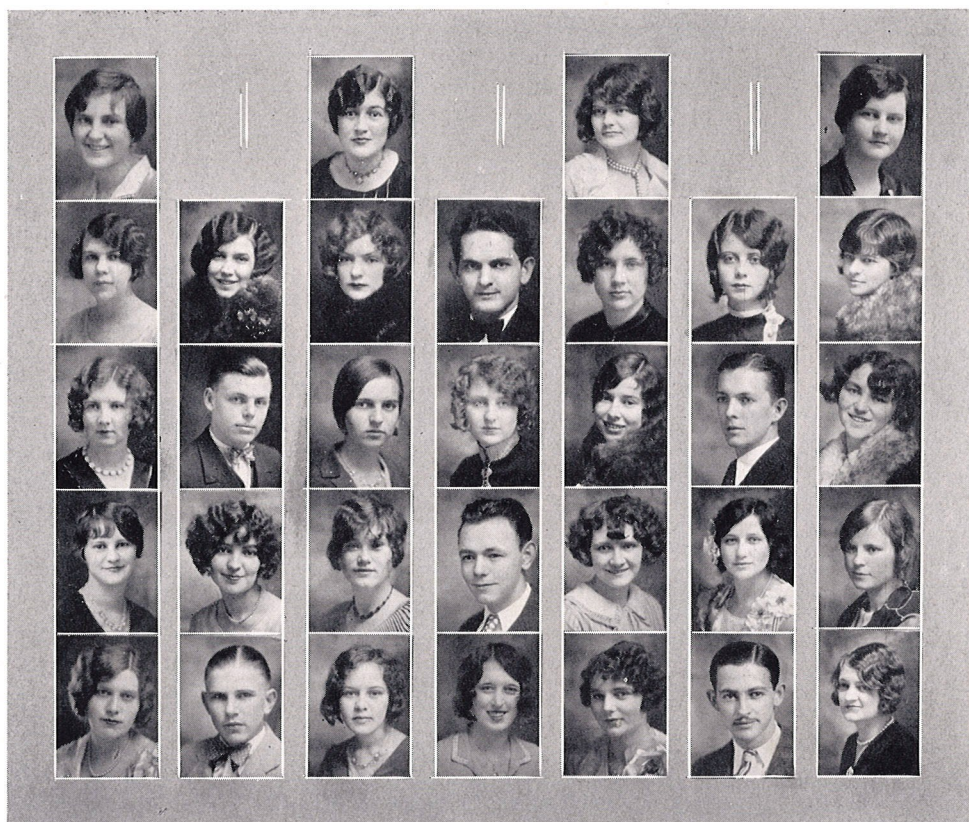
THOMAS COWAN
J. C. HARRELL

DeMOLAYS

JAMES MILLOWAY
JOHN SUMMERS
REID JANN
HERBERT TURNAGE
JOHN PALMER

R. T. HARRELLSON, JR.
LESTER LEE
PAUL ELLEDGE
CLAY BRAZIL
J. RAYMOND BAINÉ

JACK ELLIS



Le Cercle Francais

Le Cercle Francais, the Ouachita College French Club, meets in the auditorium at eight o'clock on Thursday night of the first and third weeks of the month. The purpose of the organization is better to acquaint students of French with present-day customs in France, together with current modes of expression. Formerly, the entire programs of the meetings were conducted in French, but it was soon decided that the students would really learn more and retain more pictorially, illustrations and citations rendered in English than in French. The business transactions are all conducted in French, with the programs in English.

The club was organized under the sponsorship of Miss Marie Chandler last year, and has increased its membership over one hundred per cent during the first year. The efficient administration of the officers has resulted in great interest and enthusiasm of the members of the French Club.



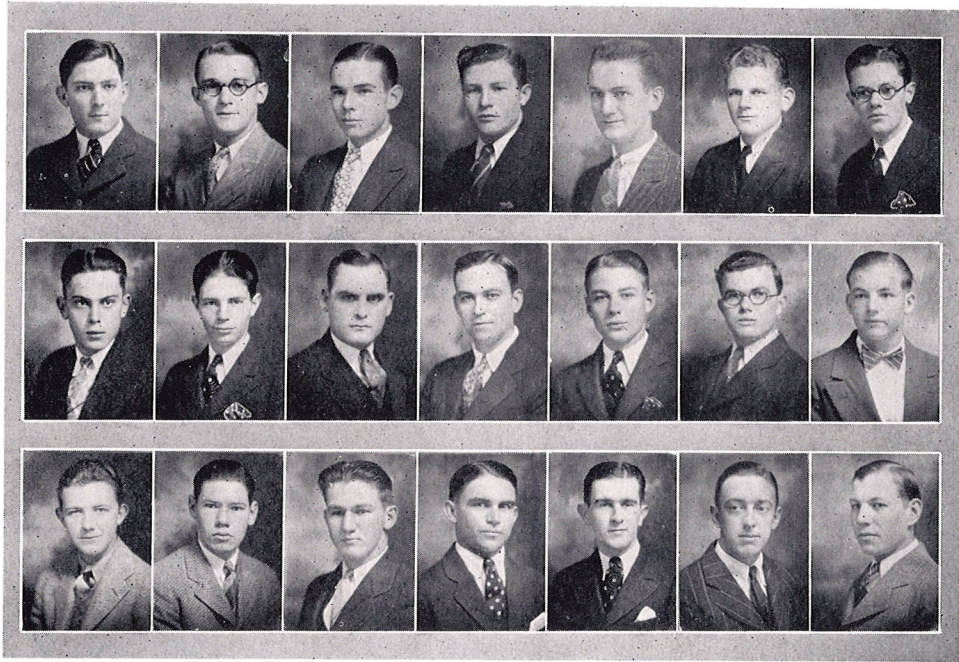
The Ouachita Chapter of the Scholarship Society of the South

OFFICERS

LOUISE BLANKS *President*
 CARROLL HINSLEY *Vice-President*
 ALBERTA HARRINGTON *Secretary-Treasurer*

MEMBERS

| | | |
|------------------------|--------------------|--------------------|
| ANGIE THOMASSON | BILLY NOWLIN | SARA WARNER NORTON |
| HERBERT TURNAGE | DORIS ELSEBERRY | MERLE VICK |
| EXIE BALL | MARGARET MCCARROLL | NEVA BENNETT |
| ALICE BLANCHE NEWBEGIN | OTHO HARRELSON | JOHN SUMMERS |



Pre-Medical Club

MEMBERS

FINIS Q. WYATT
 ARTHUR HICKS
 A. C. HARRIS
 THOMAS COATS
 EDGAR McCRARY
 CECIL SHUFFIELD
 CHARLES HOLT

PAUL HOLT
 MARION FERGUSON
 WILBURN BELL
 HARRY CALLEY
 JOHN R. DALE
 EDWIN H. BYRD
 JAMES ELKINS

JULIUS SHEPHERD
 PAUL FORTNEY
 THOMAS VANDUYN
 QUINCY O. ALEXANDER
 JACK ELLIS
 HANSFORD HOLT
 W. C. HOBGOOD



Student Council

- LAWRENCE BRITT *President*
 ELMA COBB *Vice-President*
 TINY WADE *Secretary*
 WILLIA INGRAM *Treasurer*
 OPAL MIZE *Senior Representative*
 HAZEL LEWIS *Senior Representative*
 LILLIE MAE MOORE *Junior Representative*
 JULIA BETH REEVES *Sophomore Representative*



Ouachita Players

OFFICERS

ERNESTINE ALLMON *President*
 WANDA JONES *Vice-President*
 MARTHA VIRGINIA STUART *Secretary*
 WILLIAM DORMAN *Treasurer*
 MISS EVELYN BOZEMAN, *Sponsor*

Ouachita Players

The Ouachita Players has been one of the outstanding clubs on the campus since its organization in 1926. The membership is limited, and only those who show special dramatic talent are considered for membership. The club has interesting bi-monthly meetings, and, in addition to the plays given at those meetings, the players sponsor a number of public presentations. Some of the outstanding productions are: *The Whole Town's Talking*, *The Thirteenth Chair*, and many one-act plays, such as *The Will-O'-the-Wisp*, *The China Pig*, *Mansions*, *Mannequin* and *Minnequin*, and *Suppressed Desires*.

The club has made remarkable progress the last two years under the sponsorship of Miss Evelyn Bozeman. Through her able directions the work of the club has been made interesting and instructive. The public presentations, which she has sponsored, have been worthy of any college dramatic organization, and through her efforts the club has reached the high standing which it now holds.



Ministerial Association

OFFICERS

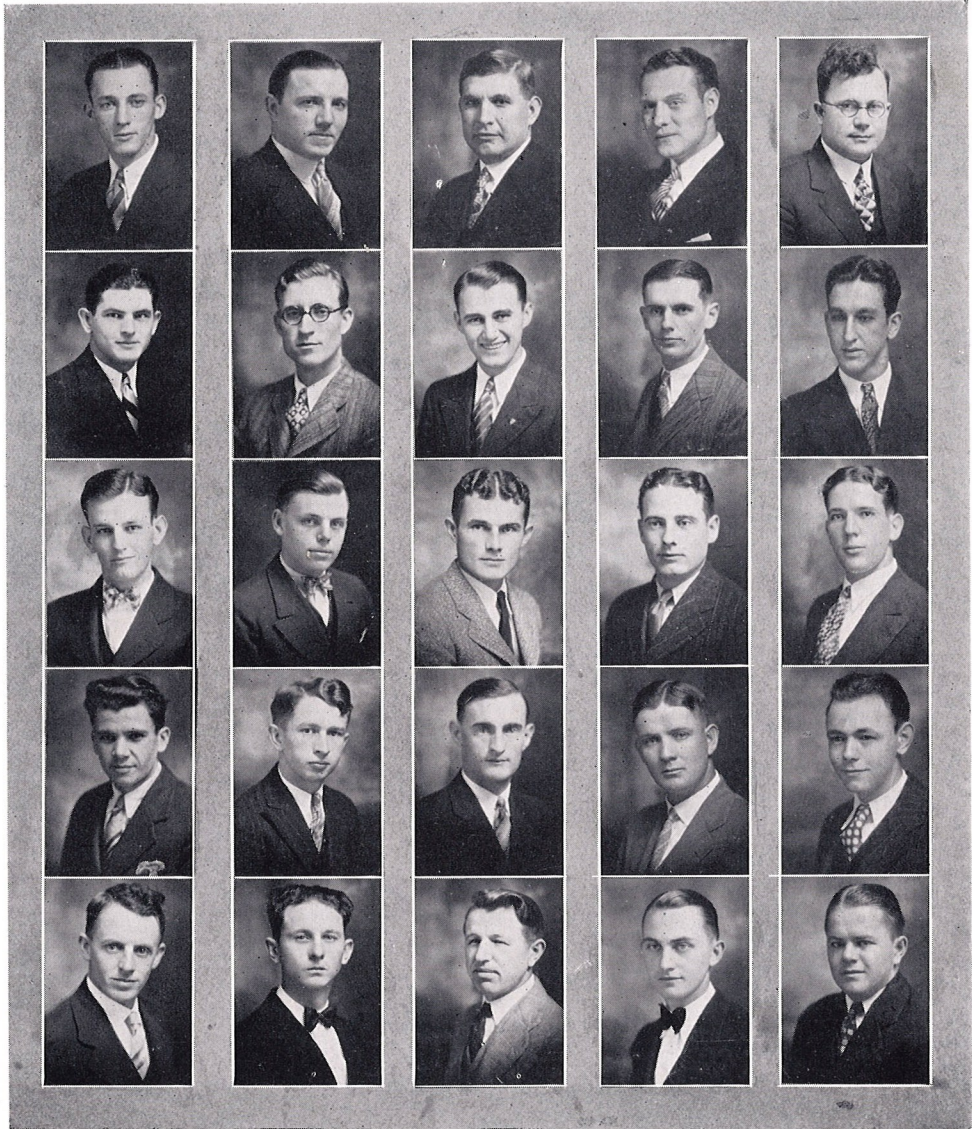
| | |
|------------------------|----------------------------------|
| CLYDE HART | <i>President, First Quarter</i> |
| JOHN KILBURN | <i>President, Second Quarter</i> |
| W. E. DAVIS | <i>President, Third Quarter</i> |
| THOMAS COWAN | <i>President, Fourth Quarter</i> |

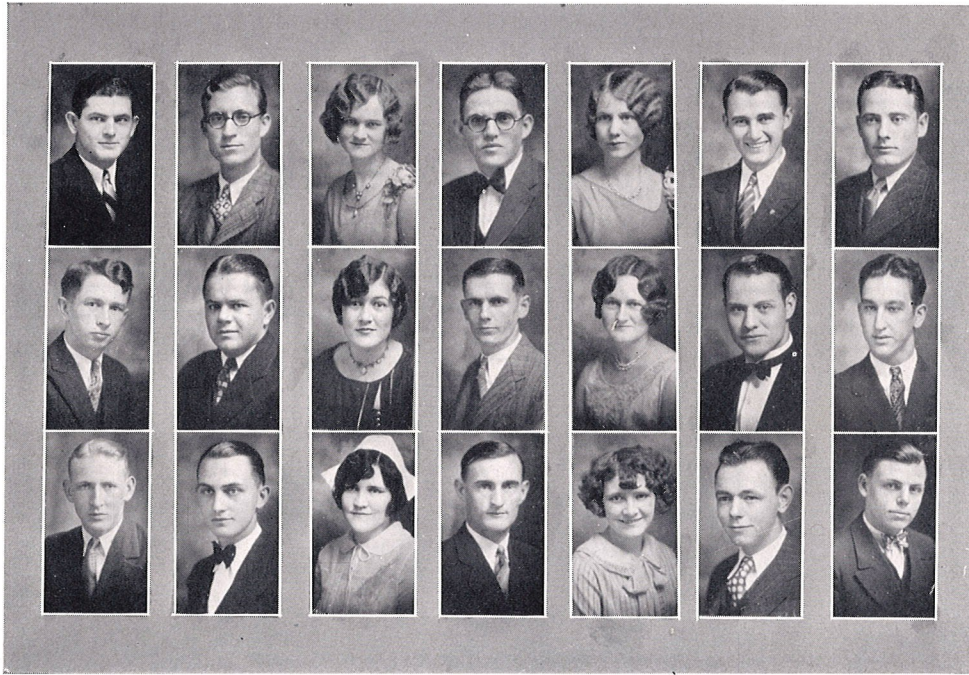
Ministerial Association

The Ministerial Association is an organization of the students who have felt the call to preach the gospel. This year it is composed of thirty-one members. These members come together every Thursday night for the purpose of fraternal fellowship. The professors of the Bible department are honorary members.

The influence of this organization is felt very much on our campus. Each year it sponsors the Consecration Week, with several of its members doing the preaching. A great number of these student-preachers go out each Sunday to all parts of the state to their churches. In summer they are, almost without exception, engaged in Christian work, leading many to Christ.

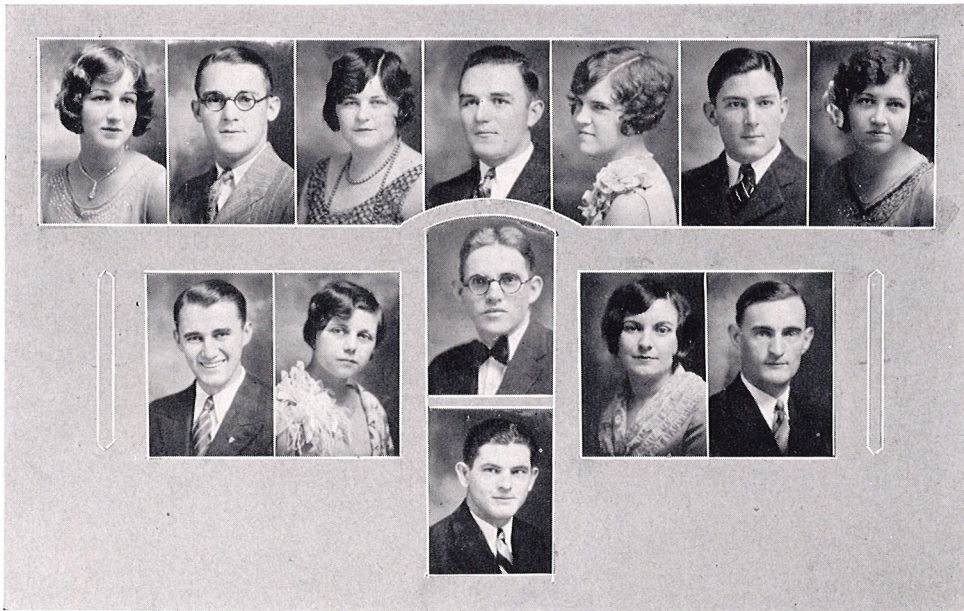
It is the desire of each preacher to be a student the same as any other member of the student body, and at the same time to be God's man trying to "rightly divide the Word of Truth".





Life Service Band

The Life Service Band is a student organization for the promotion of a greater feeling of spiritual interest and teaching among students who are interested in Mission work or in Christian education at home or abroad. It is composed of Ministerial students and other serious-minded boys and girls who are interested in promoting Christianity. It fills a needed demand on our campus, and many of its former members are now enrolled in our great seminaries, or in other schools of special training along that line. This organization, along with the Ministerial Association, is doing a great deal of good each year in sponsoring our traditional Consecration Week.



B. S. U. Council

OFFICERS

| | |
|-------------------------------|---|
| HERBERT TURNAGE | <i>President</i> |
| TINY WADE | <i>First Vice-President</i> |
| CECIL SHUFFIELD | <i>Second Vice-President</i> |
| LAWRENCE BRITT | <i>Secretary</i> |
| CHARLES HOLT | <i>Treasurer</i> |
| ANGIE THOMASSON | <i>B. Y. P. U. Representative</i> |
| WITHROW HOLLAND | <i>Town B. Y. P. U. Representative</i> |
| ODESSA FORD | <i>Sunday School Representative</i> |
| TRUETT BLACKMON | <i>Life Service Band Representative</i> |
| KATHERINE SPENCER | <i>Y. W. A. Representative</i> |
| ALBERTA HARRINGTON | <i>Town Y. W. A. Representative</i> |
| HAROLD TILLMAN | <i>Ministerial Association Representative</i> |
| DR. THOMAS C. ALLEN | <i>Faculty Member</i> |



Y. W. A.

OFFICERS

OPAL MIZE *President, First Half*
 ANGIE THOMASSON *President, Second Half*

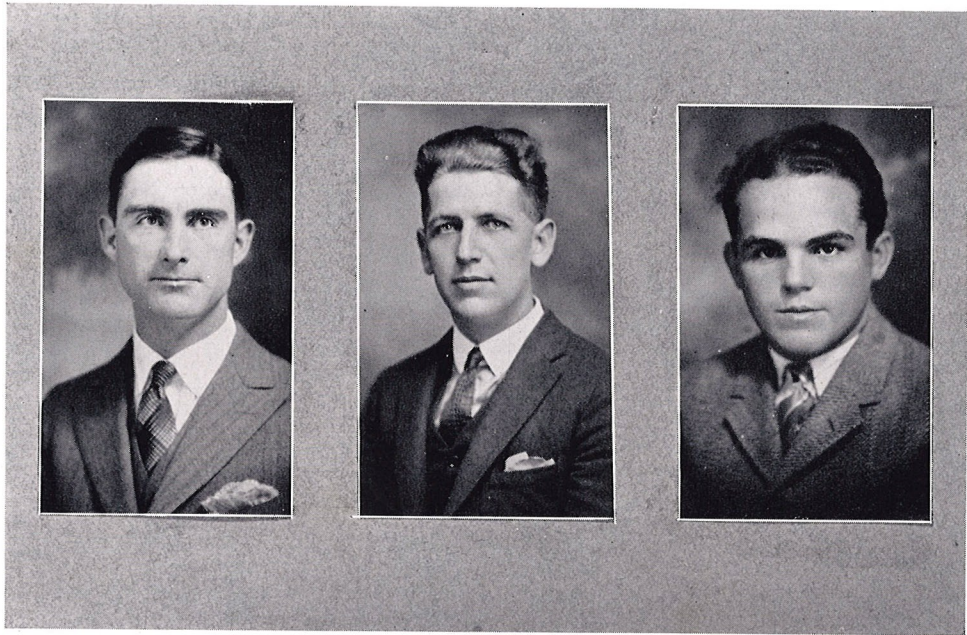
MRS. ESTELLE McMILLAN BLAKE
Sponsor

The Ouachita Y. W. A. was organized in 1911, at which time Mrs. Blake was elected counselor. Through this position she has won the esteem and admiration of every girl who has been a member, and we wish to express our appreciation of the faithful leadership she has shown.

Every girl in Cone-Bottoms Hall is a member of the organization. Its programs are inspirational and educational, being based upon Missions and Baptist work. Officers are elected twice each year, dividing the school year into two semesters. These officers form the cabinet, which meets once each month to attend to the business and pray for the advancement of the Kingdom work. The Y. W. A. watchword is, "And they that be wise shall shine as the brightness of the firmament, and they that turn many to righteousness as the stars forever and forever."—Daniel 12:3.



publications



The Staff's Policy

The Staff this year has endeavored to make a complete unit of the book from cover to cover. We have made it as individualistic as possible and as representative of the entire student body as we could. We purposely made the class sections smaller than they have formerly been in order that we might have a larger and better feature section. We hope the special arrangements of the book and the completeness of it will be pleasing to the owners.

—THE EDITOR



Ouachitonian Staff

LITERARY STAFF

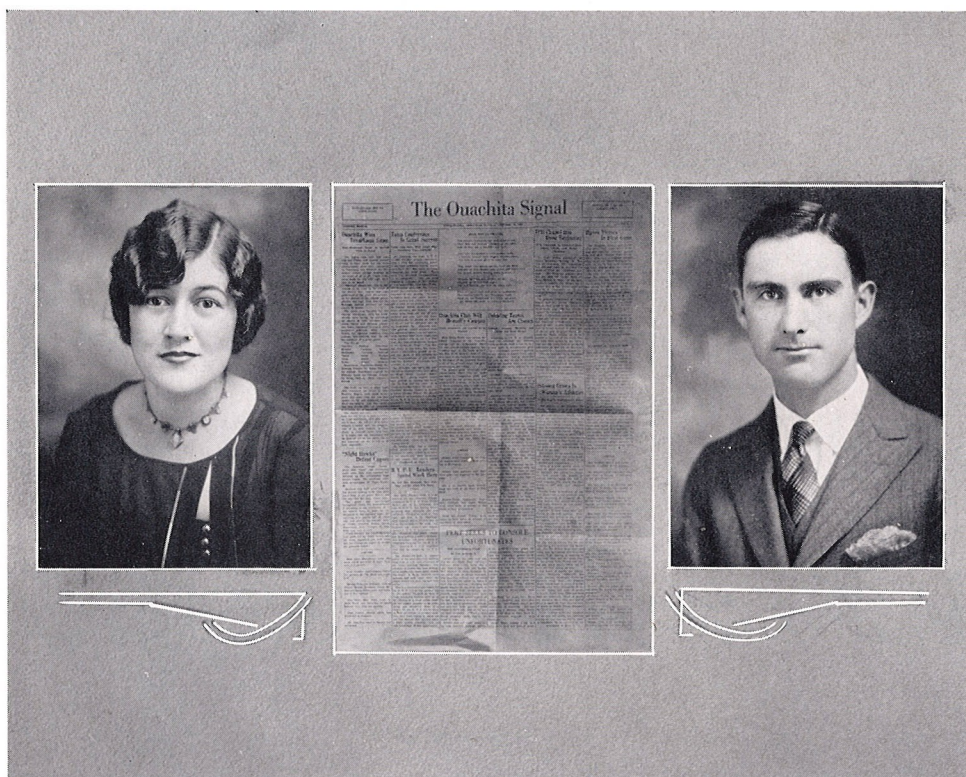
- CHAS. "DANNY" DEEVERS *Editor-in-Chief*
 DORIS ELSBERRY *Associate Editor*
 LUCILLE ALLMON *Associate Editor*
 J. RAYMOND BAINE *Junior Editor*
 ANGIE THOMASSON *Class Editor*
 ALBERTA HARRINGTON *Assistant Class Editor*
 JACK ELLIS *Athletic Editor*
 LOUISE BLANKS *Calendar Editor*

ART STAFF

- EUGENE TILLMAN *Art Editor and Designer*
 DOSSIE FLEMMING *Assistant Art Editor*

BUSINESS STAFF

- HAROLD MCCARROLL *Business Manager*
 CECIL SHUFFIELD *Assistant Business Manager*
 BILLY NOWLIN *Advertising Manager*
 C. E. ARNETT, *Faculty Adviser*



Ouachita Signal

The *Ouachita Signal*, the college weekly publication, has been as successful this year as any in the past, and with the perseverance of the Editor and the Staff, much progress has been made toward a bigger and greater paper.

Although the personnel of the staff has at times fluctuated, the present regime seems to have endured. Elbert Hubbard must have been thinking of the *Signal* when he wrote: "A little more patience (and still more), a little more charity for all, a little more devotion, a little more love; with less bowing down to the past, and a silent ignoring of pretended authority; brave looking forward to the future with more faith in our fellows, and the race will be ripe for a great burst of light and life."

Just as the soul goes by leaps and bounds, by throes and throbs, so goes the work of any college publication; but if, during the school year 1928-'29, the soul of the *Signal* has been made of dawn stuff and starshine, the few false hits and bad runs were incomparably overcome by the finished product, the *Signal* itself.



The Signal Staff

| | |
|----------------------------------|--------------------------------------|
| BEATRICE ROGERS | <i>Editor-in-Chief</i> |
| CHAS. "DANNY" DEEVERS | <i>Business Manager</i> |
| EDWIN BYRD | <i>Managing Editor</i> |
| LUCILE ALLMON | <i>Associate Editor</i> |
| KATHERINE SPENCER | <i>News Editor</i> |
| ROBERT COLLIE | <i>Sports Editor</i> |
| MARTHA JEAN WINBURN | <i>Feature Editor</i> |
| J. B. WILSON | <i>Humor Editor</i> |
| ALBERTA HARRINGTON | <i>Alumni Editor</i> |
| AMBOLINE HALL | <i>Society Editor</i> |
| MARGARET MCCARROLL | <i>Local Editor</i> |
| ELOISE ABERNATHY | <i>Exchange Editor</i> |
| HERBERT TURNAGE | <i>Make-Up Editor</i> |
| ANNE HUMPHREYS | <i>Rewrite Editor</i> |
| HARVEY MCGRAW | <i>Circulation Manager</i> |
| GENE TILLMAN | <i>Assistant Circulation Manager</i> |
| EVANDER L. MOSELY | <i>Assistant Business Manager</i> |
| DR. ROBERT D. HIGHFILL | <i>Faculty Adviser</i> |

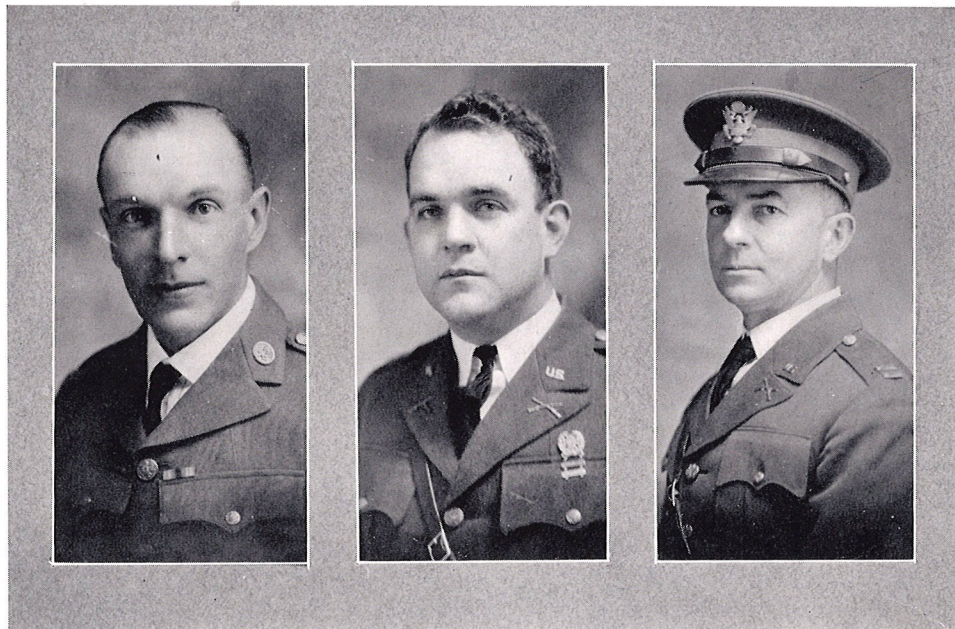


Life, A Question

*Life? and worth living?
Yes, with each part of us—
Hurt of us, help of us, hope of us, heart of us,
Life is worth living.
Ah! with the whole of us,
Will of us, brain of us, senses and soul of us.
Is life worth living?
Aye, with the best of us,
Heights of us, depths of us—
Life is the test of us.*

—SELECTED



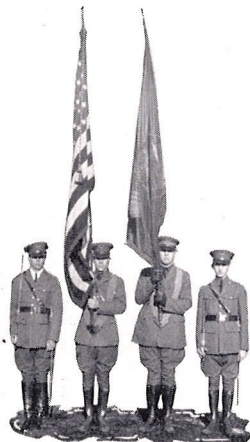


Military Science and Tactics

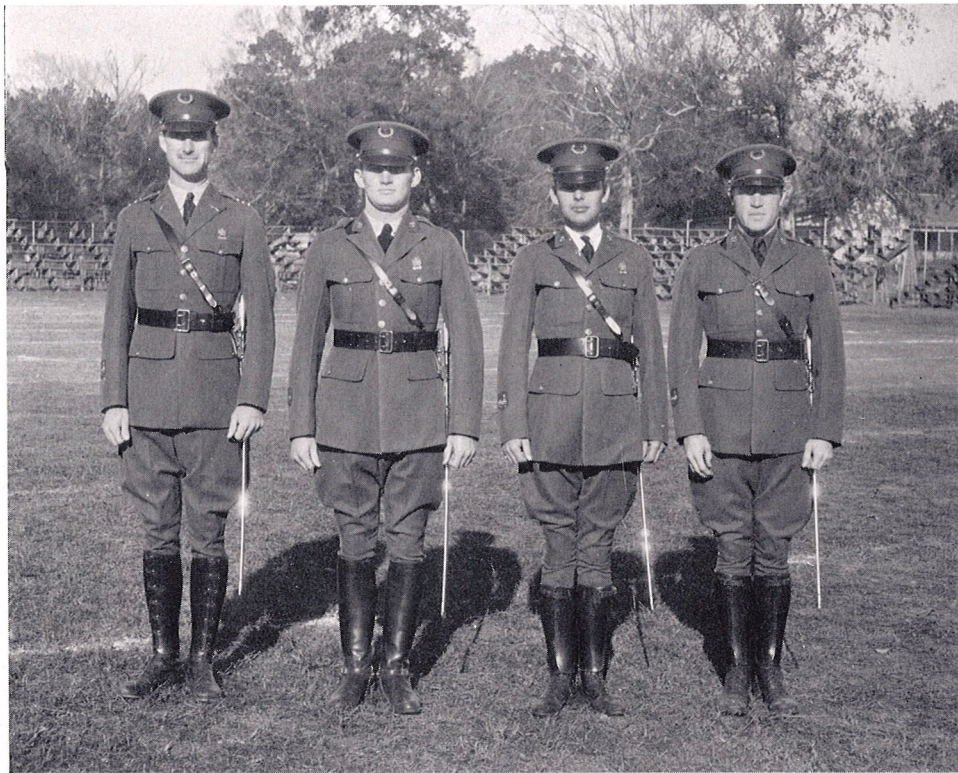
CAPTAIN WARFIELD LEWIS
Commandant and Professor of Military Science and Tactics

CAPTAIN FRANK G. POTTS
Assistant Professor of Military Science and Tactics

FIRST SERGEANT JOHN MAURER
Assistant in Military Science and Tactics



THE COLOR GUARD



Battalion Staff

BUCHANAN *Battalion Major*

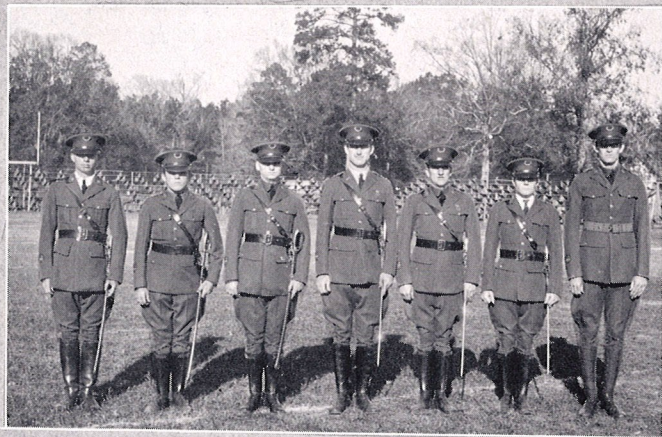
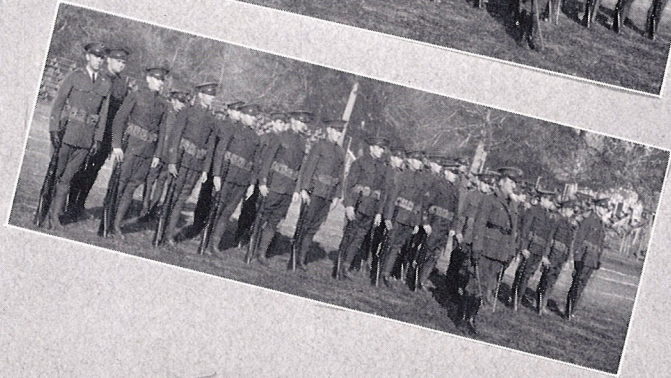
DEEVERS *Captain Company A*

HOWARD *Captain Company B*

HILL *Adjutant to Major*

FLORA McDONALD, *Battalion Sponsor*





COMPANY A AND SPONSOR



COMPANY B AND SPONSOR



R. O. T. C. BAND



R. O. T. C. RIFLE TEAM