



BOOK FOUR
ACTIVITIES



The Orchestra

PROFESSOR WILLIAM DEUSINGER, *Director*

SITTING

ESTELLE BRITT
DOROTHY FIGLEY
WILLIE BELL AUBREY

NEVA BENNETT
LOUISE SHAVER
EVELYN BOWDEN
DOROTHY MAE MEDLOCK

GRACE LEE REEDER
VIRGINIA HOPKINS
MARGARET MCCARROLL

STANDING

PROFESSOR DEUSINGER
CARY CAROLTON
RAYMOND BAINE
HANSFORD HOLT

HARROLL MCCARROLL
BERNARD DANIEL
REID JANN
ARLE QUEEN



Boys' Glee Club

MEMBERS

J. RAYMOND BAINE
 JOHN SUMMERS
 HARROLL MCCARROLL
 HARVEY MCGRAW
 W. P. HARMON

VERNON ALLEN
 ARLE QUEEN
 HOWARD CLAUNCH
 J. E. MEADOR
 CHARLES HOLT

J. T. STOCKS
 J. C. HARREL
 CLIFFORD FRITH
 QUINCY ALEXANDER
 J. B. WILSON

(Pictures Not Made)

ROBERT COLLIE

TOMMY VANDUYN

CECIL SHUFFIELD

PROFESSOR HALL, *Sponsor*



Girls' Glee Club

MEMBERS

HAZEL BARLOW
NELLIE MAE FORD
LUCILLE SANGSTER
WANDA JONES
EVELYN BOWDEN
DORIS ELSEBERRY

ROSALIE BAYNUM
FRANCES BENTON
JULIA SIMMS
MARGARET MCCARROLL
MARLYS ROMUNDER
KATHERINE SPENSER

HAZEL LEWIS

PROFESSOR HALL, *Sponsor*



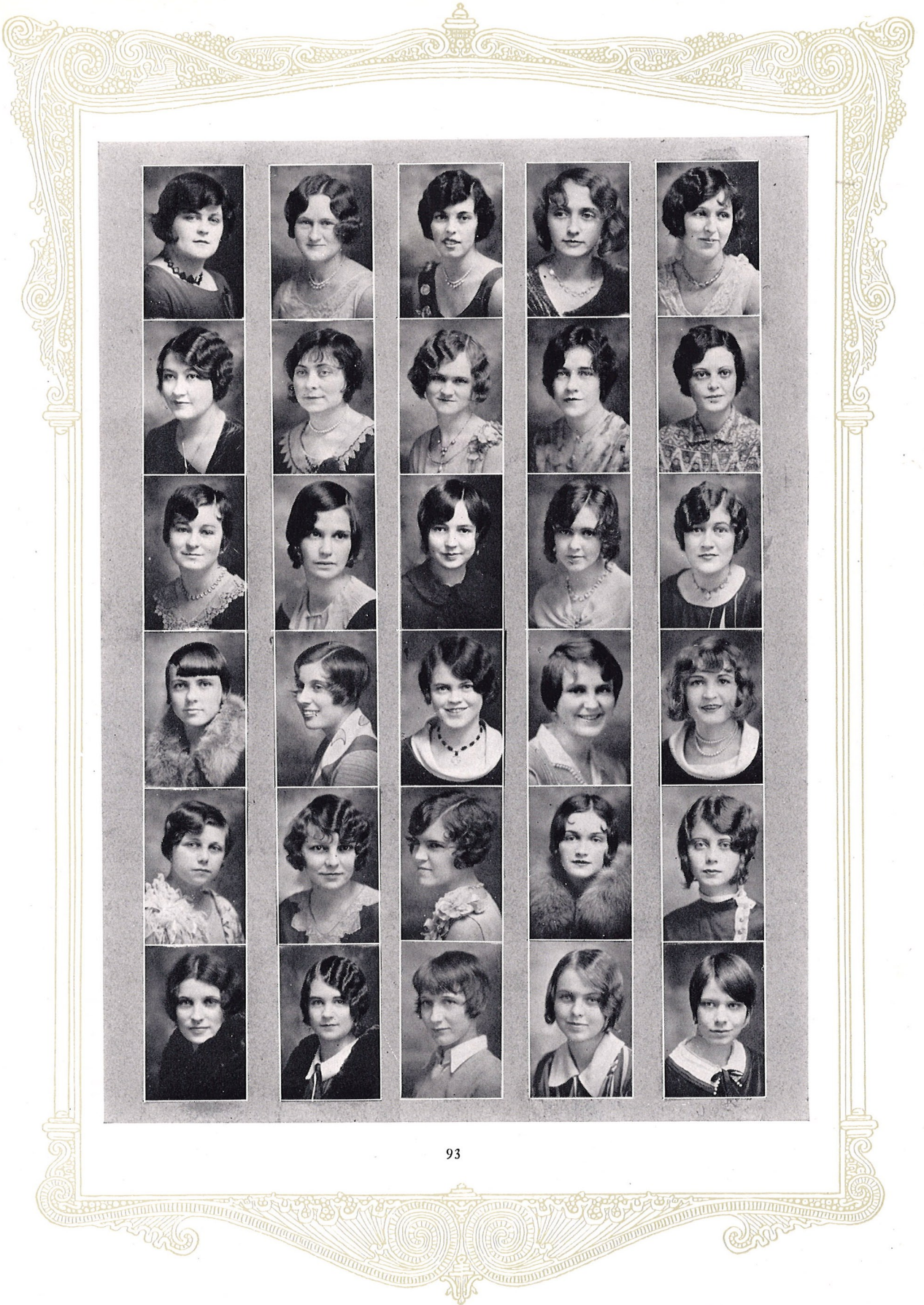
Corinnean Literary Society

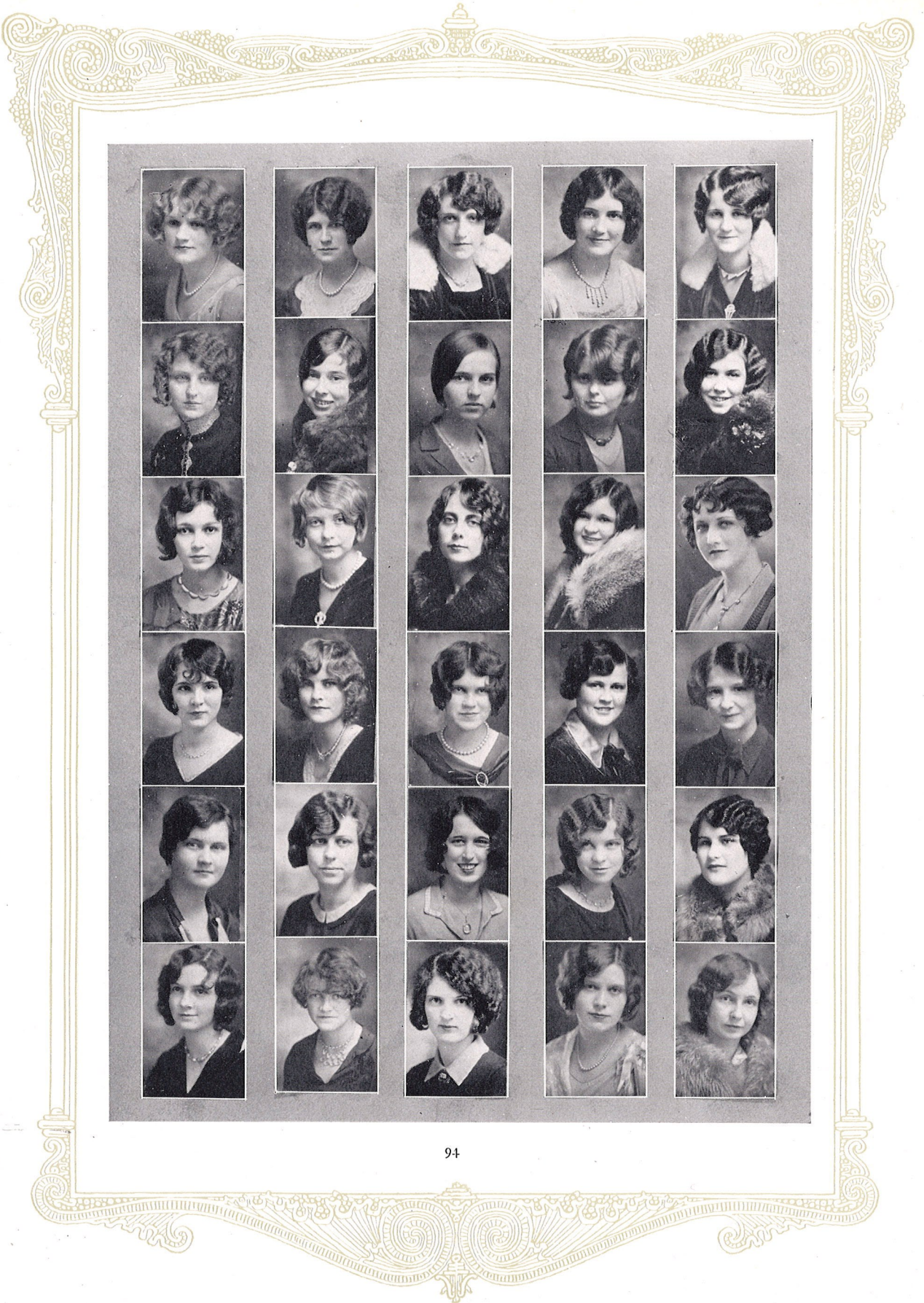
OFFICERS

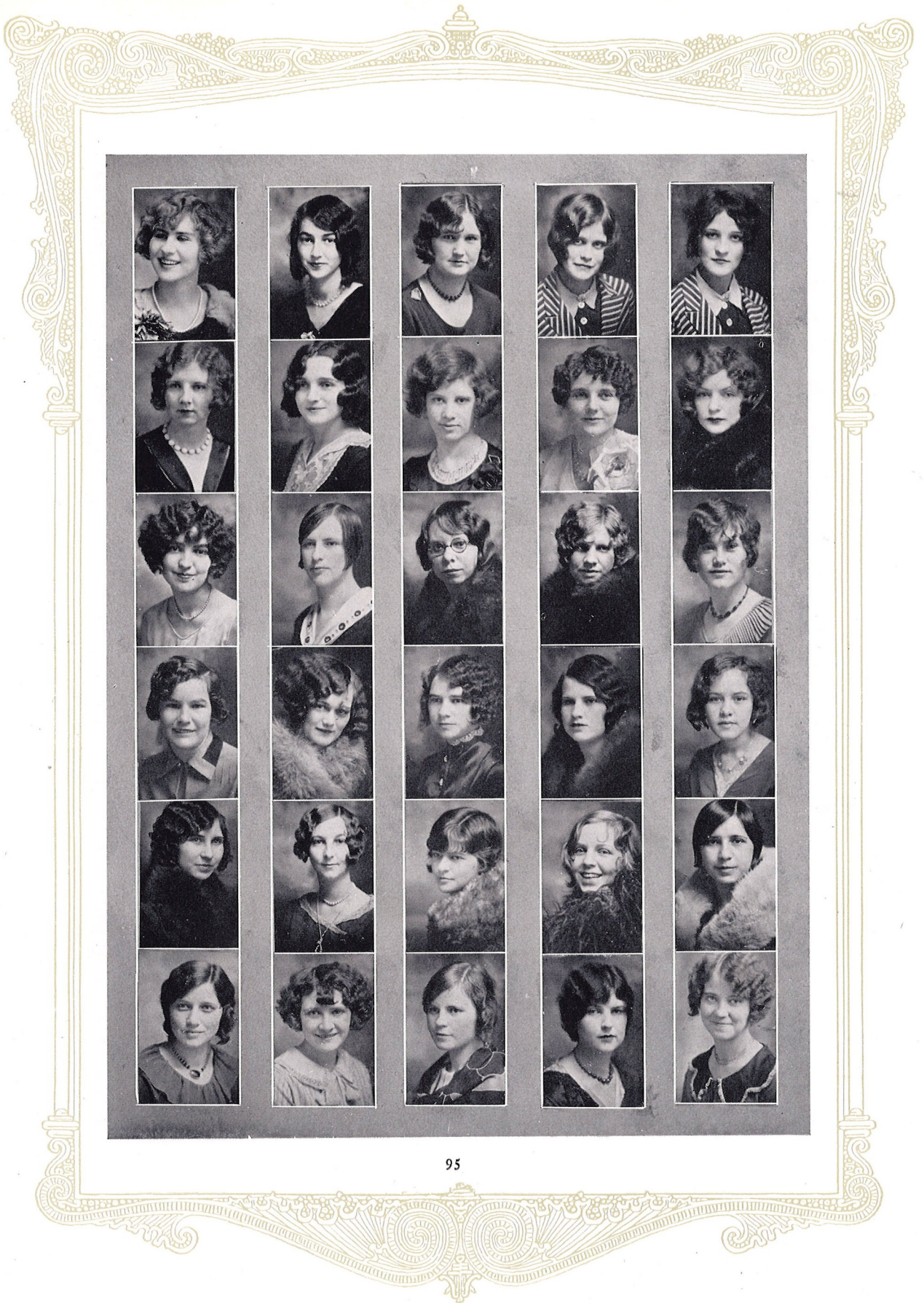
WANDA JONES *President, First Term*
ALICE BLANCHE NEWBEGIN *President, Second Term*
TINA WADE *President, Third Term*

ESSAYISTS

LUCIE ALLMON
MARTHA JEAN WINBURN









Alpha Kappa Literary Society

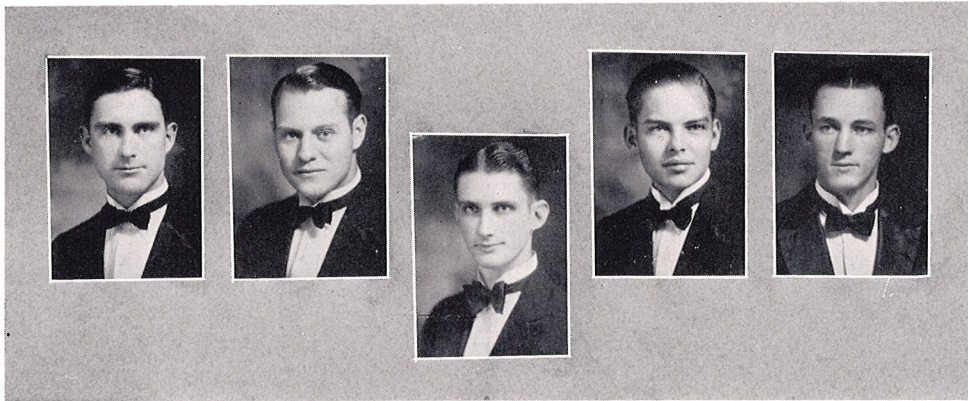
OFFICERS

LOUISE BLANKS *President, First Quarter*
ODESSA FORD *President, Second Quarter*
EXIE BALL *President, Third Quarter*

ESSAYISTS

ALBERTA HARRINGTON
LOUISE BLANKS





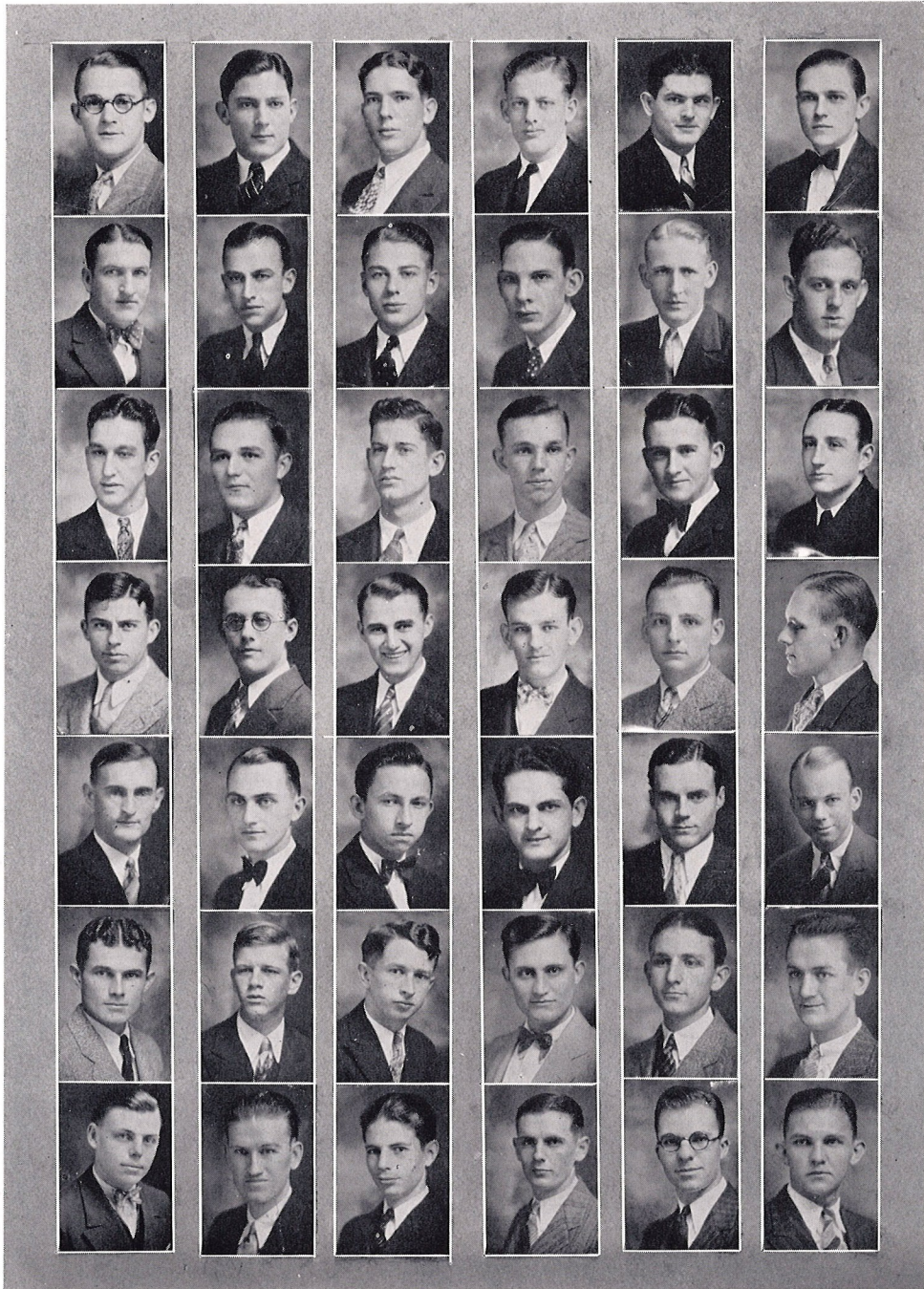
Philomathean Literary Society

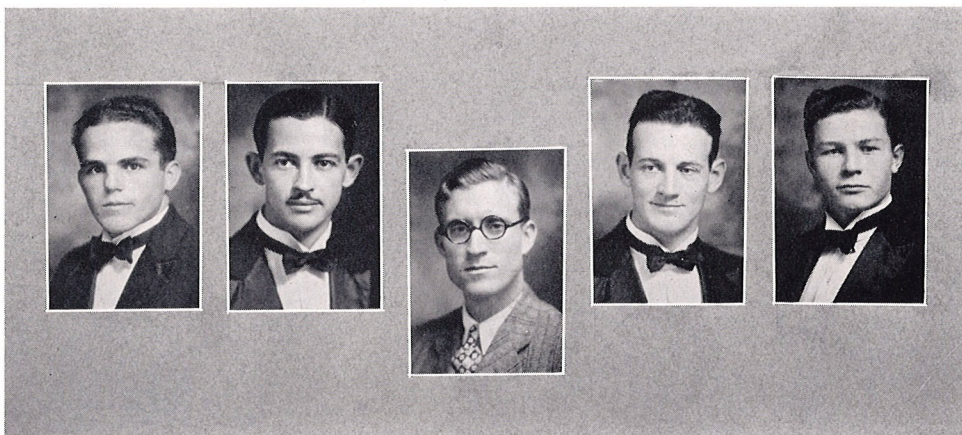
OFFICERS

CLYDE HART *President, First Quarter*
WARREN HILL *President, Second Quarter*
CHAS. L. DEEVERS *President, Third Quarter*
THOMAS COWAN *President, Fourth Quarter*

ORATOR

BASIL MUNN





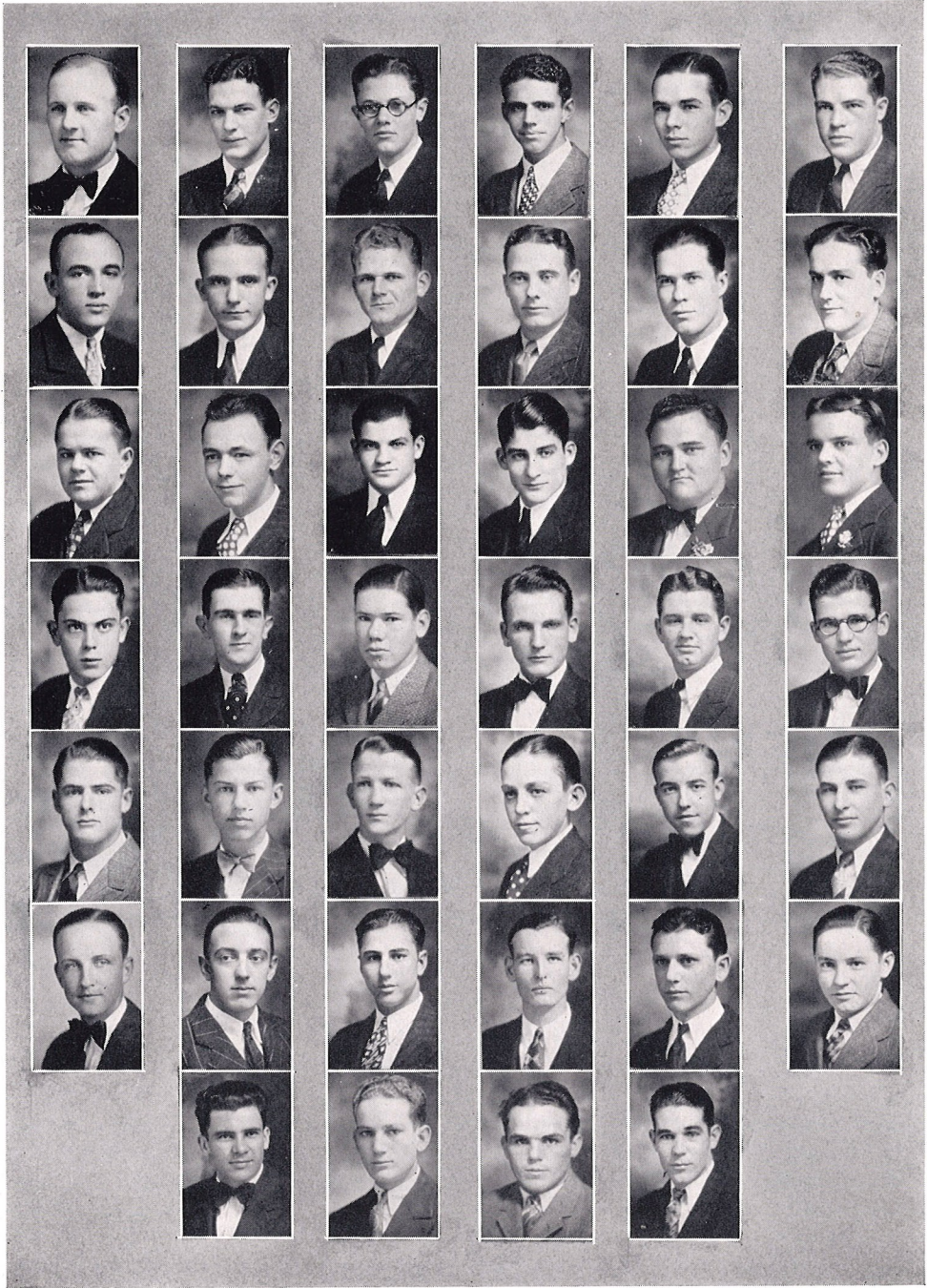
Hermesian Literary Society

OFFICERS

- HARROLL MCCARROLL *President, First Quarter*
CARROLL HINSLEY *President, Second Quarter*
JOHN R. DALE *President, Third Quarter*
ALLEN NORTON *President, Fourth Quarter*

ORATOR

LONNIE MEACHUM





Sons and Daughters Club

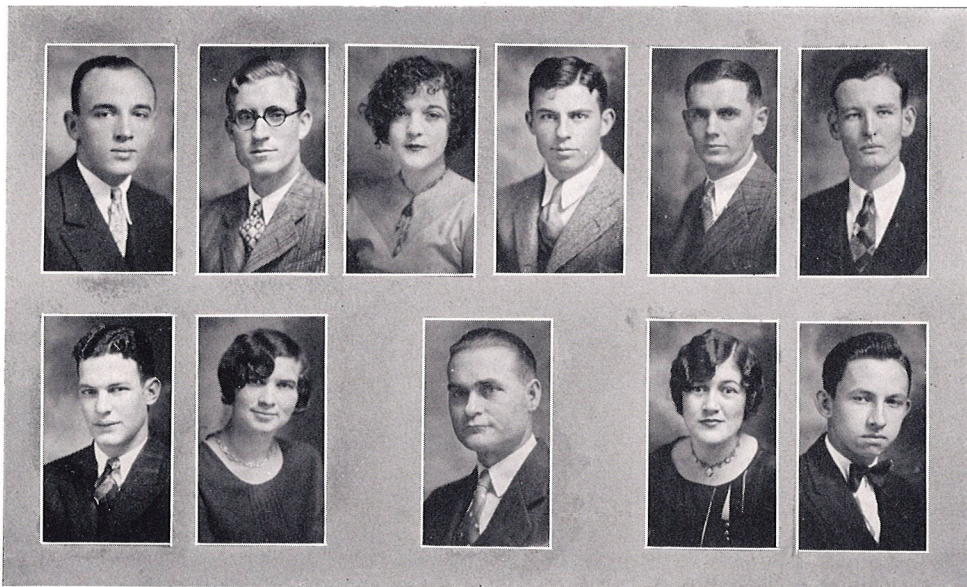
OFFICERS

ANGIE THOMASSON *President*
 EVANDER MOSELY *Vice-President*
 FLORA D. McDONALD *Secretary*
 JIM BREWER *Treasurer*
 MRS. ESTELLE McMILLAN BLAKE, *Sponsor*



The Sons and Daughters Club

The Sons and Daughters Club, as the name implies, is composed of students, either or both of whose parents have been students in Ouachita College. It was founded in 1912 under the sponsorship of Mrs. Estelle Blake. At that time it was composed of twelve members, while today it has about one hundred members. Its purpose has never been to carry on regular club activities, but to interest students in each other and to foster a kindred spirit among students whose parents have had the opportunity, the ability, and the desire to climb a little higher in the realm of knowledge and culture. It is still our privilege to have Mrs. Blake as sponsor.



Pi Kappa Delta

MEMBERS

WILLIAM McMILLAN, *President*

LONNIE MEACHAM

OPIE ESKRIDGE

OTHO HARRELSON

MARTHA JEAN WINBURN

TEDDY JONES

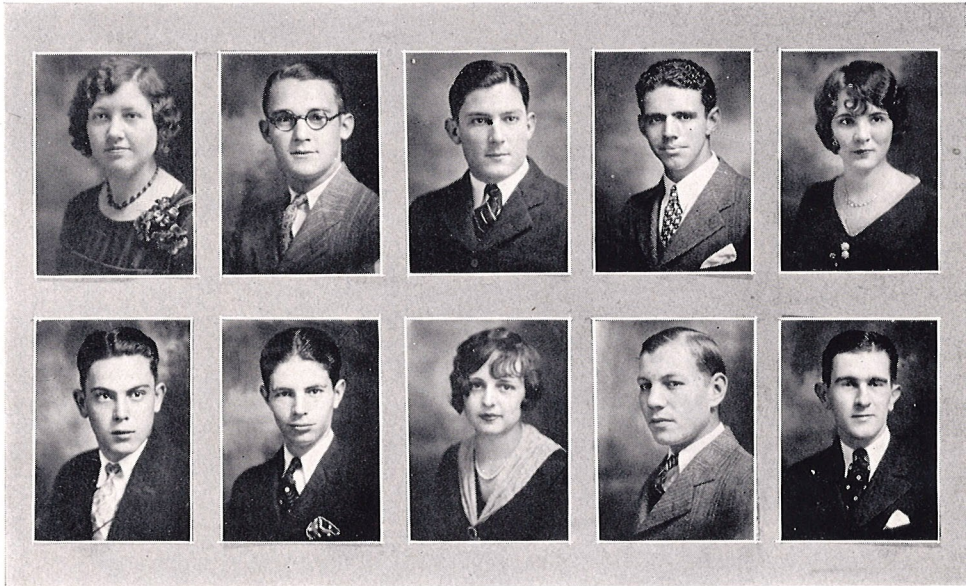
BEATRICE ROGERS

JUSTUS MATLOCK

RICHARD JOHNSON

LUCILE ALLMON

DR. ROBERT D. HIGHFILL, *Faculty Advisor*



The Nashville Club

OFFICERS

ODESSA FORD *President*
 CHAS. HOLT *Vice-President*
 MARTHA ELLEN SAINÉ *Secretary*
 EDGAR McCRARY *Treasurer*

MEMBERS

CECIL SHUFFIELD	HANSFORD HOLT
BILL DORMAN	GRACE LEE REEDER
PAUL HOLT	THOMAS COATES



E. E. E. Club

MEMBERS

BEULAH LEE REITZIMMER
ELMA COBB
TINY WADE
HAZEL SAMPLES

MARTHA OLIVER
HAZEL LEWIS
MARGARET DALY
WYBLE WIMBERLY



W. C. F. Club

MEMBERS

DORIS ELSBERRY
GRACE LEE REEDER
MARLYS ROMOUNDER

MARGARET MCCARROLL
MARTHA ELLEN SAIN
KATHERINE SPENSER

RUTH FLORA



C. O. F. Club

MEMBERS

NEVA BENNETT, *President*
NELLIE MAE FORD
ALICE ROBERTSON
ANGIE THOMASSON
DOROTHY FIGLEY

BENNIE TALLEY
MAUDE FRISBY
ODESSA FORD
BERNICE ASHLEY
THELMA RANKIN



Kewpie Club

EARLINE STARNES	"Secret"
JULIA BETH REEVE	"Sailor"
FLORA McDONALD	"Chief"
MILDRED WATKINS	"Painter"
ERNESTINE STARNES	"Joy"
LILLIE MAE MOORE	"Soldier"
BETTY BURTON	"Gloom"
LAWRENCE BRITT	"Gardner"
AMBOLINE HALL	"Farmer"