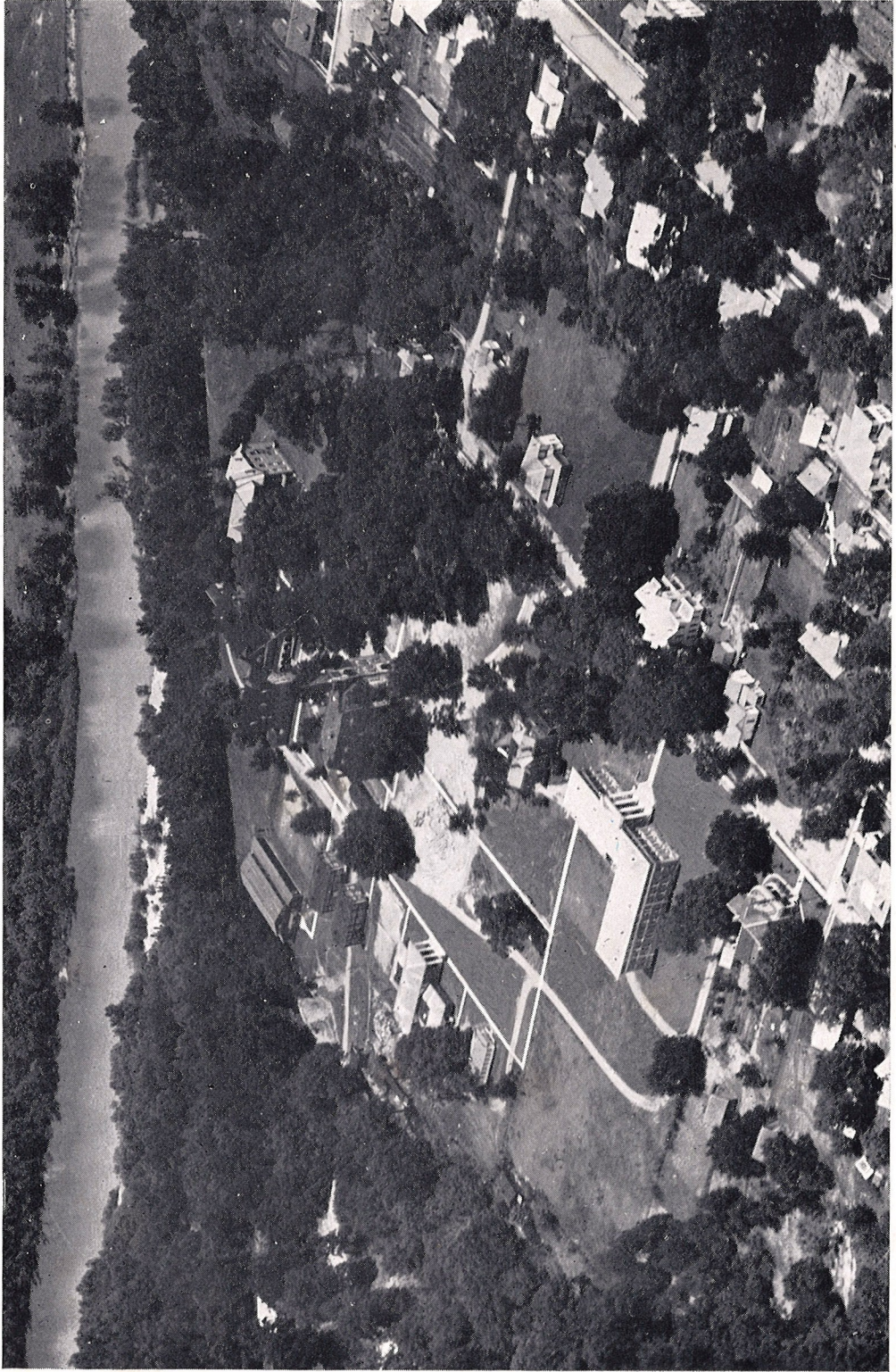




BOOK ONE
THE COLLEGE



530 23



GIRLS' DORMITORY



BOYS' DORMITORY



WEST ENTRANCE



SWIMMING HOLE

President's Message

OUACHITA COLLEGE was founded by a group of men and women vitally interested in Christian education. The development of the physical, mental, and spiritual life, separately, and as a whole, has been the ideal before the authorities of Ouachita College throughout its entire history. Young men and women are being trained at Ouachita College to assume leadership in church and state.

Ouachita College is a member of the North Central Association of Colleges and Secondary Schools. Membership in this organization makes possible the transfer of credits from Ouachita to any other standard institution. In addition to the literary department, the Conservatory of music and the Dramatic Arts Department in Ouachita are recognized as among the best.

The Faculty of Ouachita College has been carefully selected, and those who have the opportunity to know, are convinced that it is not surpassed by the faculty of any other institution in the state.

The fact that Ouachita College is a small institution tends to create a more democratic spirit in the student body. We have on the college campus a splendid group of young men and young women, who are making an earnest effort to prepare themselves for useful citizenship. Our student body cannot be excelled by any similar group. It is obvious that this high quality of the student body is in itself a valuable force in the training of the individual student who selects this school.



PRESIDENT A. B. HILL

Faculty

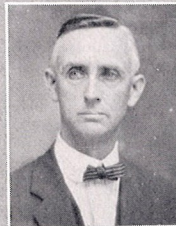


T. D. BROWN
B.A., TH.M., B.D.
Professor of Bible and Religious Education



C. E. ARNETT
B.A., M.A.
Professor of Social Sciences

E. A. SPESSARD
B.A., M.S., PH.D.
Professor of Biology



E. O. NORTH
B.S., M.S., PH.D.
Professor of Chemistry and Physics

B. F. CONDRAY
B.A., PH.M., LL.D.
Professor of Education



PETER ZELLERS
B.A., M.A.
Professor of Latin and Greek

W. V. N. GARRETSON
B.S., M.S., PH.D.
Professor of Mathematics



PAUL E. WHITEHOUSE
B.A., M.A.
Professor of Modern Languages

FOY H. HAMMONS
B.A.
Director of Athletics

R. B. HIGHFILL
B.A., M.A., PH.D.
Professor of English

Faculty

ALFRED HALL

F.R.C.O. (LONDON), F.A.G.O.

*Professor of Voice and Organ
Director of Glee Clubs and Choir*

LIVINGSTONE H. MITCHELL

*Director of the Conservatory
Professor of Piano*

WILLIAM F. DEUSINGER

*Professor of Violin, Harmony, Theory and
Appreciation
Director of the College Orchestra*

FAY HOLIMAN

B.A.

Instructor in Piano

EVELYN BOZEMAN

B.O.E.

Director of Department of Expression

EMILY BLAKE

B.A.

Physical Education for Women

MRS. ALFRED HALL

Instructor in Art

MRS. ESTELLE McMILLAN BLAKE

Assistant Professor of English

THOMAS C. ALLEN

B.A., TH.D.

Assistant Professor of Religious Education

ROBERT W. ROWLAND

B.A., M.A.

Assistant Professor of Social Sciences





Faculty

MAE FOSTER
B.A., M.A.

Dean of Women and Associate Professor of English

CURTIS PULLIG
A.B.

Dean of Men

SYBIL GOLDSMITH
A.B., M.A.

Assistant Dean of Women and Associate Professor of English

LOIS HOLLIDAY
B.A., B.L.S.
Librarian

MARIE CHANDLER
B.A. (MICHIGAN)

Assistant Professor of Modern Languages

MRS. HOWARD
Nurse

FRANCES CRAWFORD
A.B.

Secretary to President of College

R. T. HARRELSON
College Business Manager