



Organizations



Corinnean Literary Society

OFFICERS

- MILDRED SMITH *President First Quarter*
ELIZABETH SEALE *President Second Quarter*
MUNNIE McRAE *President Third Quarter*

ESSAYISTS

- ELIZABETH SEALE
SYLVIA WEBB



Corinnean Literary Society

OFFICERS

- MILDRED SMITH President First Quarter
ELIZABETH SEALE President Second Quarter
MUNNIE McRAE President Third Quarter

ESSAYISTS

- ELIZABETH SEALE
SYLVIA WEBB



CORINNEAN
LITERARY
SOCIETY



CORINNEAN
LITERARY
SOCIETY



CORINNEAN
LITERARY
SOCIETY

A central collage of 21 individual black and white portraits of young women. The portraits are arranged in a grid-like fashion around the central text. The text 'CORINNEAN LITERARY SOCIETY' is written in a large, serif font, with 'CORINNEAN' at the top, 'LITERARY' on the left, and 'SOCIETY' on the right. The portraits are of various sizes and are set against a light, patterned background. The women are dressed in early 20th-century attire, including high-collared blouses, dresses, and sweaters. Some are wearing necklaces or earrings. The overall composition is balanced and visually appealing.



Alpha Kappa Literary Society

OFFICERS

- LEILA THOMAS *President First Quarter*
- JOSEPHINE RILEY *President Second Quarter*
- LOIS ROYAL *President Third Quarter*
- THEO HOLLAND *President Fourth Quarter*

ESSAYISTS

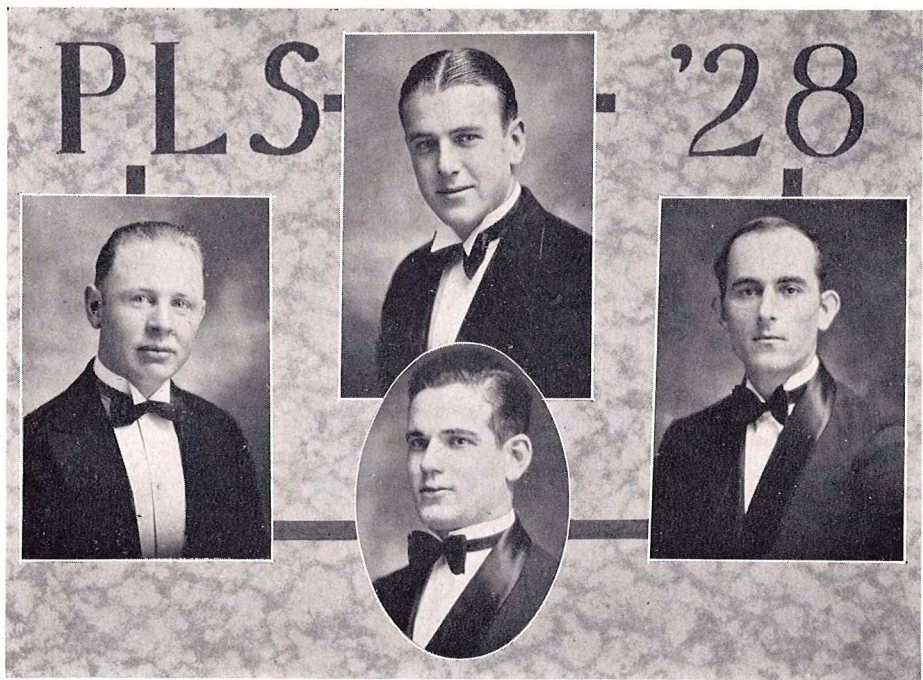
- LOUISE SEARCY
- LEILA THOMAS



ALPHA KAPPA
LITERARY SOCIETY

A grid of 16 black and white portraits of young women, arranged in four rows and four columns. The portraits are framed by a decorative border. The text "ALPHA KAPPA LITERARY SOCIETY" is centered at the top of the grid.





Philomathean Literary Society

OFFICERS

- LLOYD SPARKMAN *President First Quarter*
- LOYCE BILES *President Second Quarter*
- EARNEST SALLEE *President Third Quarter*
- LEE NICHOLS *President Fourth Quarter*

ORATOR

LEE NICHOLS



PHILOMATHEAN
LITERARY SOCIETY

A composite image featuring 16 individual black and white portraits of young men, arranged in a 4x4 grid. The portraits are set against a light, textured background. The text "PHILOMATHEAN LITERARY SOCIETY" is printed in a large, serif font across the top of the grid, with "PHILOMATHEAN" on the top line, "LITERARY" on the second line, and "SOCIETY" on the third line. The portraits are arranged as follows:

- Row 1: Four portraits, with the text "PHILOMATHEAN" centered above them.
- Row 2: Four portraits, with the text "LITERARY" centered above them.
- Row 3: Four portraits, with the text "SOCIETY" centered above them.
- Row 4: Four portraits.

Each portrait shows a young man in formal attire, including suits, ties, and bowties.

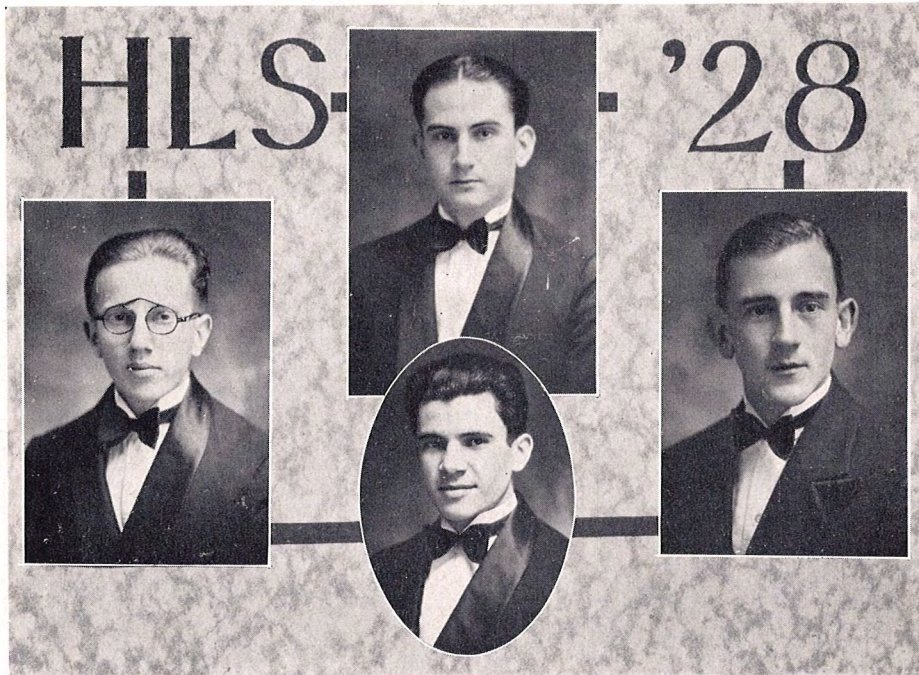


PHILOMATHEAN
LITERARY SOCIETY



PHILOMATHEAN
LIBRARY
SOCIETY

A grid of 18 black and white portraits of young men, arranged in four rows and three columns. The portraits are set against a light-colored, textured background. In the center of the grid, the words "PHILOMATHEAN", "LIBRARY", and "SOCIETY" are printed in a stylized, serif font, stacked vertically. The portraits are connected by thin black lines forming a grid. The men are dressed in formal attire, including suits, ties, and bowties. The portraits are arranged in four rows and three columns. The first row has three portraits. The second row has three portraits. The third row has three portraits. The fourth row has three portraits. The portraits are arranged in a grid pattern, with the text "PHILOMATHEAN LIBRARY SOCIETY" in the center.



Hermesian Literary Society

OFFICERS

- HORACE POWER *President First Quarter*
- BRUCE PRICE *President Second Quarter*
- CHARLES MYRICK *President Third Quarter*
- L. V. CARROLL *President Fourth Quarter*

ORATOR

L. V. CARROLL



HERMESIAN
LITERARY **SOCIETY**

A collection of 16 individual black and white portraits of young men, arranged in a grid-like pattern around the central text. The portraits are of varying sizes and are set against a light, patterned background. The men are dressed in formal attire, including suits, jackets, and bow ties. The central text "HERMESIAN LITERARY SOCIETY" is prominently displayed in a bold, serif font.



HERMESIAN
LITERARY SOCIETY

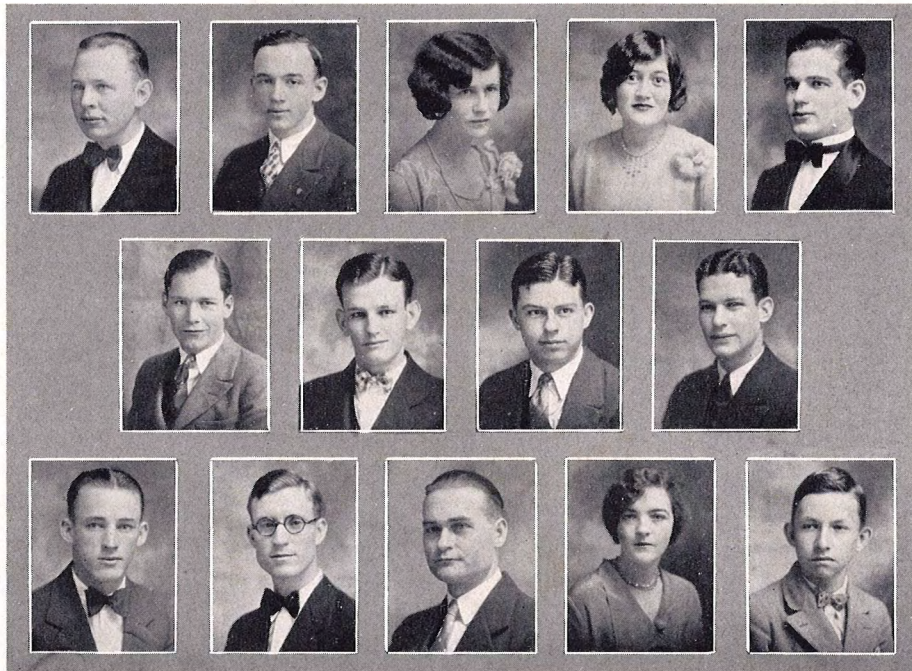
A grid of 16 black and white portraits of young men, arranged in four rows and four columns. The portraits are framed by a decorative border. The text "HERMESIAN LITERARY SOCIETY" is centered at the top of the grid.



Y. W. A.

Ouachita Y. W. A. was organized in 1911, at which time Mrs. Blake was elected counselor. Every girl in Cone-Bottoms Hall is a member of the organization. Its programs are always inspirational and educational, being based on missions and the state work of Baptist.

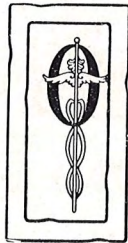
Officers are elected only twice a year, dividing the school year into two semesters. These officers form the cabinet, which meets each week, to attend to the business and pray for the advancement of the Kingdom work. It is hoped that each girl may remember always her training in the Y. W. A. and the watchword, "And they that be wise shall shine as the brightness of the firmament, and they that turn many to righteousness as the stars for ever and ever."—*Daniel, 12:3.*



Pi Kappa Delta

LLOYD SPARKMAN *President*
 WILLIAM McMILLAN *Vice-President*
 SYLVIA WEBB *Secretary*
 BEATRICE ROGERS *Treasurer*
 LEE NICHOLS *Orator*

JOHN WRIGHT	CLYDE HART
JIM BREWER	LONNIE MEACHUM
OTHO HARRELSON	DR. HIGHFILL
THEODORE JONES	MARTHA JEAN WINBURN



UACHITA'S men and women! As the ancients worked in stone to leave to posterity images of the great and near great, so have we tried to do likewise with the aid of modern devices.

Should we be asked to state our greatest desire it would be to know each and every student. Greater personal satisfaction could never be derived from the possession of many degrees. We offer as a substitute and with a full knowledge of its inadequacy—their photographs.

Years hence this book will be priceless. How could it be otherwise with so many of the world's finest contained therein?



Ministerial Association



THE Ministerial Association was founded to meet a specific need and because it has met that need it will endure. It is as permanent as the college of which it is a part. The aim which the association has in view may be stated briefly as follows: to bring about a closer fellowship between the ministerial students, to develop in them a deep love for the Master, and to prepare them for more efficient service.

The Ministerial Association is one of the oldest organizations in the college. During its history it has developed a strong organization, high ideals, and an excellent spirit of fellowship, co-operation and helpfulness.



MINISTERIAL ASSOCIATION

A collection of 25 individual black and white portraits of men, arranged in a grid. The portraits are set against a light-colored, textured background. The men are dressed in formal attire, including suits, jackets, and bowties. The portraits are arranged in five rows: the first row has two portraits flanking the title; the second row has five portraits; the third row has five portraits; the fourth row has five portraits; and the fifth row has three portraits.



WILLIAM C. BRASHER

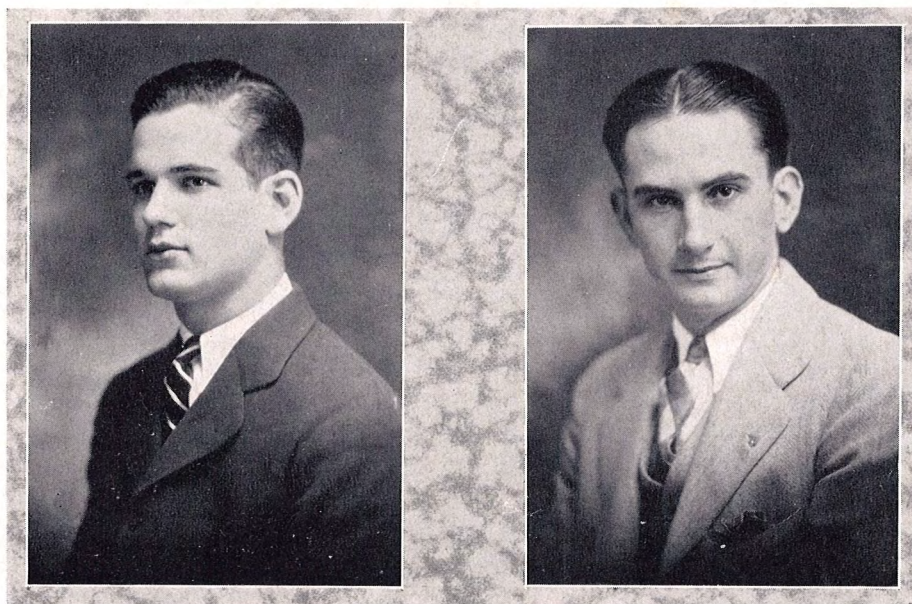
BEN F. RUNYAN

The Ouachitonian

STAFF

WILLIAM C. BRASHER	<i>Editor-in-Chief</i>
BEN F. RUNYAN	<i>Business Manager</i>
BOB MORRIS	<i>Junior Editor</i>
HARROLL MCCARROLL	<i>Assistant Business Manager</i>
HORACE POWER	<i>Art Editor</i>
ETHEL HUDDLSTON	<i>Assistant Art Editor</i>
BRUCE PRICE	<i>Associate Editor</i>
JOSEPHINE RILEY	<i>Class Editor</i>
HOUCK REASONER	<i>Athletic Editor</i>
LOIS ROYAL	<i>Calendar Editor</i>
C. E. ARNETT	<i>Faculty Advisor</i>
THOMAS REAGAN	<i>Associate Editor</i>





LEE NICHOLS

BRUCE PRICE

Ouachita Signal

LEE NICHOLS *Editor-in-Chief*
BRUCE PRICE *Business Manager*

The Ouachita Signal is a weekly publication depicting campus activities—athletic, social and literary. Copy for this herald of the week is furnished by the staff or by any other students of literary ability. Issues of the Signal are mailed weekly to the subscribers among the alumni to keep them in touch with their Alma Mater.



Signal Staff

JAMES C. HARRELL
Managing Editor

LOIS ROYAL
Associate Editor

MILDRED SMITH
Associate Editor

HOUCK REASONER
Sport Editor

HUGH ELGIN
Assistant Sport Editor

THASE FERGUSON
Exchange Editor

JOSEPHINE RILEY
Local Editor

LEILA THOMAS
Local Editor

HELEN SCOTT
Joke Editor

BEATRICE ROGERS
Society Editor

CHARLES DEEVERS
Assistant Business Manager

BEN RUNYAN
Circulation Manager





Masonic and DeMolay Club

MASONS

LOYCE BILES Augusta	WILLIAM BUCHANAN Prescott
LLOYD SPARKMAN Stuttgart	S. A. WILES Antioch
BRUCE HAYS PRICE Russellville	R. K. CITY Ozan
EARNEST SALLEE Okalona	LELAND HILL, °32 Little Rock

DEMOLAYS

WILLIAM TUGGLE Jonesboro	JEFF RANEY Clarendon
EDWARD TUGGLE Jonesboro	JOHN PALMER Pine Bluff
CECIL BRAUGHTON Hot Springs	JOHN WRIGHT Arkadelphia
JOHN SUMMERS Jonesboro	WILTON O'NEAL Hot Springs
R. T. HARRELSON Fordyce	J. RAYMOND BAINE Paragould
HERBERT TURNAGE El Dorado	







Student Council

- FLORENCE ST. JOHN *President*
- THASE FERGUSON *Vice-President*
- ADA CLARE WADE *Secretary*
- MARION KING *Treasurer*
- LOIS ROYAL *Senior Representative*
- EARNESTINE ALLMON *Junior Representative*
- DONNIE WATTS *Sophomore Representative*
- MARY JO KEELING *Freshman Representative*



Pre-Med Club

BEN RUNYAN
HORACE POWER
JOE NICHOLS
WILLIAM TUGGLE
ED PUGH
LOYCE BILES

HARROLL McCARROLL
EOB MORRIS
NOBLE GOATCHER
JOHN R. DALE
CHARLES HOLT
DICK WATTS

CHRISMAN CROW
HANSFORD HOLT
BEN COOPER
JAMES ELKINS
JESSE FRAZIER
TOM VAN DYNE





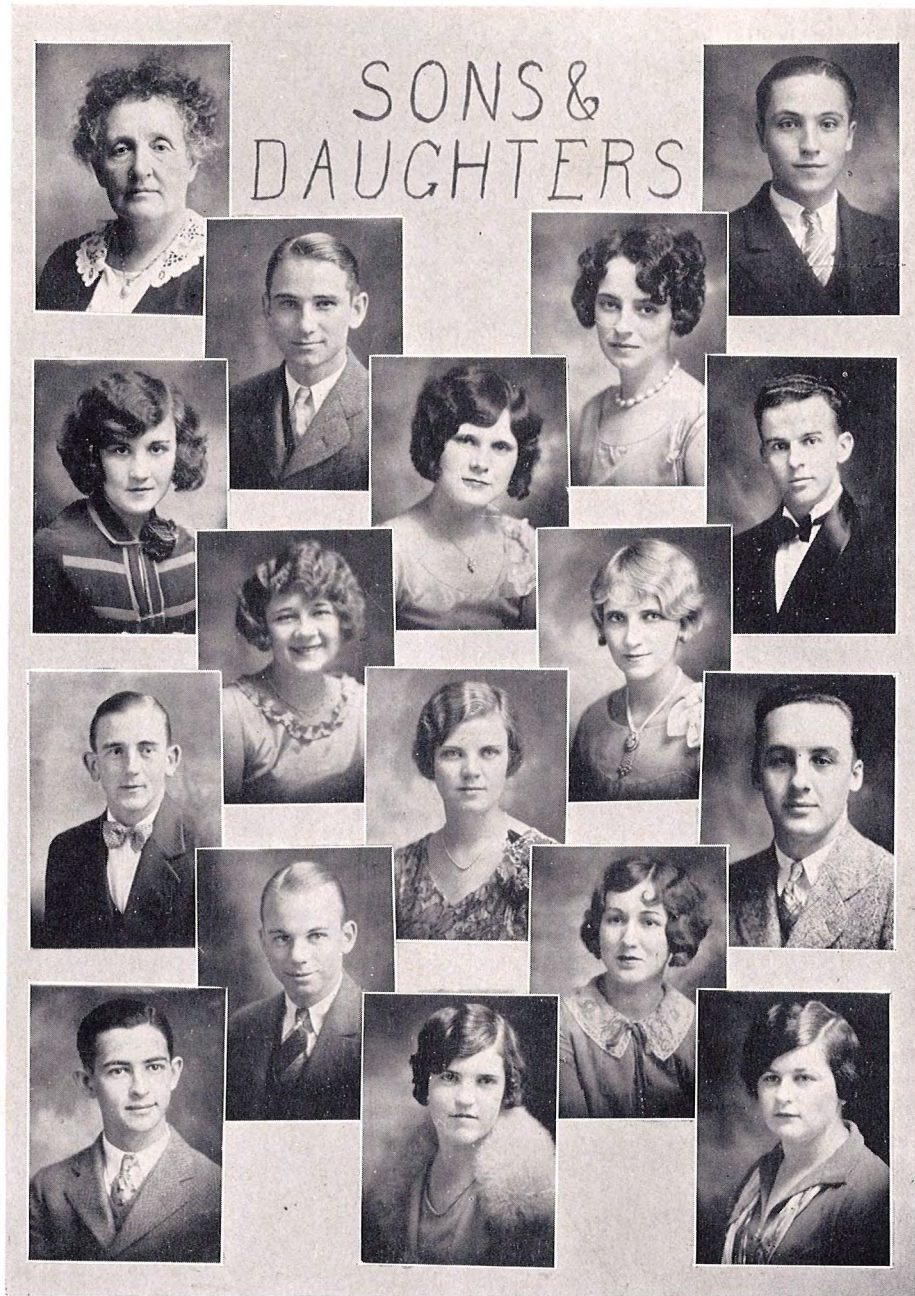
DRAMATIC CLUB



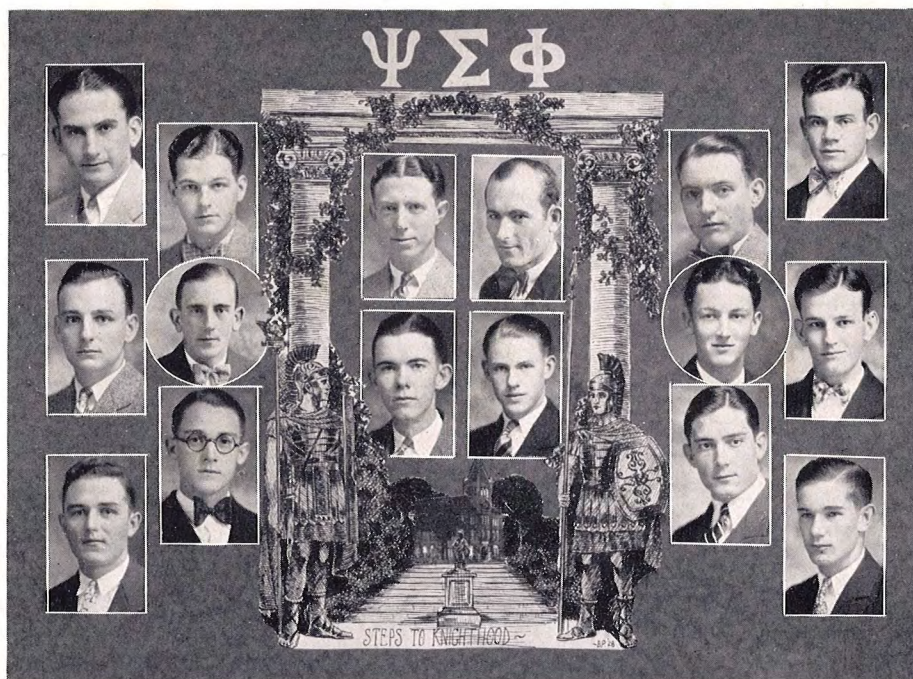
**LE CERCLE
FRANCAIS**

*Pour l'amour de la langue française
Blanche et Rouge Oeillet*

Blanche Mays
Marie Chandler
Walter Oathout
J. Byron Wilson
Gladys Durrett
Margaret McCarroll
Ross Edwards
Kearns Howard
Theo Holland
Mercedes Benton
Julius Sheppard
Wilton O'Neal
Fay Holiman
Elsie Ayers
Beatrice Rogers
Neva Bennett
Vera Lawless







Psi Sigma Phi

BEN RUNYAN	<i>Knight Mare</i>	Little Rock
EARNEST SALLEE	<i>Knight Worker</i>	Okolona
PERDUE MILES	<i>Knight Owl</i>	El Dorado
CHARLES MYRICK	<i>Knight Last</i>	Siloam Springs
EDWARD PUGH	<i>Knight Air</i>	Monticello
BOB YOUNG	<i>Knight Lark</i>	Greenwood
JOHN JARRETT	<i>Knight Shirt</i>	Little Rock
JOHN SUMMERS	<i>Knight Rest</i>	Jonesboro
BERNICE GILL	<i>Knight Gown</i>	Jonesboro
BOB MORRIS	<i>Knight Latch</i>	Kansas
BILL BRASHER	<i>Knight Before</i>	Little Rock
CECIL SHUFFIELD	<i>Knight Bathe</i>	Nashville
CHARLES HOLT	<i>Knight Hawk</i>	Nashville
HERBERT TURNAGE	<i>Knight Watchman</i>	El Dorado
JIM BREWER	<i>Knight Gale</i>	Ft. Smith
BRUCE PRICE	<i>Knight Bengal</i>	Russellville

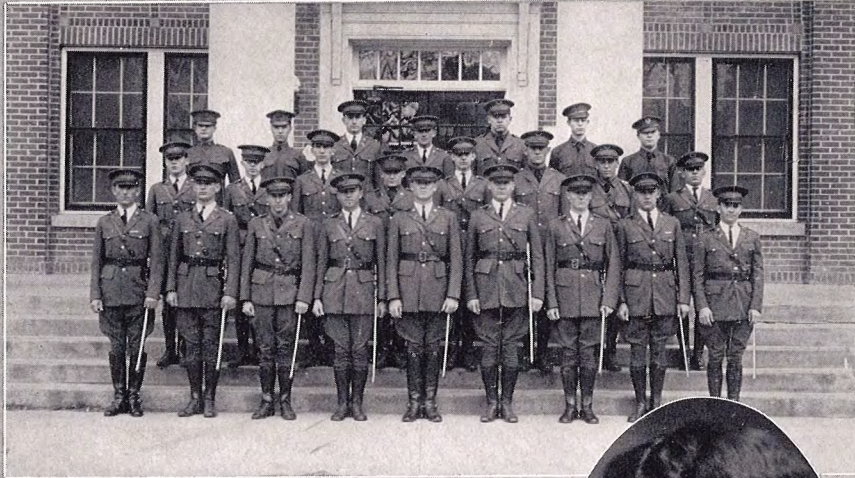


Military Science and Tactics

CAPTAIN IRVING C. SCUDDER
*Commandant and Professor of Military
Science and Tactics*

CAPTAIN FRANK G. POTTS
*Assistant Professor of Military
Science and Tactics*

FIRST SERGEANT JOHN MAURER
*Assistant in Military Science
and Tactics*

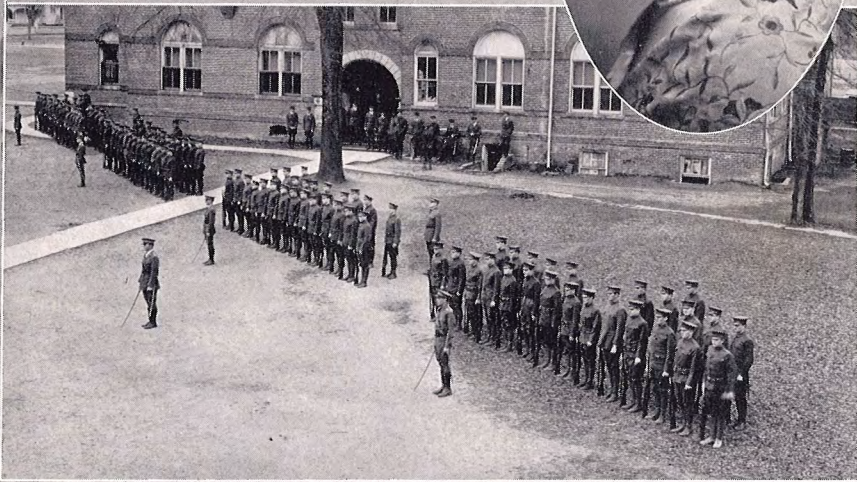


Cadet Officers

Battalion Sponsor



The Battalion





University Club

BEN F. RUNYAN	Harvard
BRUCE H. PRICE	Oxford
HOUCK REASONER	Princeton
ERNEST SALLEE	University of Heidelberg
PERDUE MILES	Harvard
WILLIAM TUGGLE	Oxford
HARROLL MCCARROLL	University of Constantinople
BOBBY LEE MORRIS	University of Leipzig
JOHN SUMMERS	Chicago Musical College
CECIL SHUFFIELD	Harvard
CHARLES HOLT	Harvard
ARLE QUEEN	Boston College of Music
WILTON E. O'NEAL	Harvard
WM. B. DORMAN, JR.	Cornell
J. C. HARRELL	University of Amsterdam
NOBLE GOATCHER	Johns Hopkins
JESSE L. FRAZIER	Washington University
CECIL BRAUGHTON	Tulane
BEN COOPER	Tulane
CHRISMAN CROWE	Vanderbilt
THOMAS D. RICHARDSON	West Point
JAMES ELKINS	Vanderbilt
JAMES CONE, JR.	University of California
HANSFORD HOLT	Tulane



Scholarship Society of the South

MEMBERS

LEE NICHOLS *President*

CORNELLE GREENHAW *Vice-President*

FLORENCE ST. JOHN *Secretary-Treasurer*

LOIS ROYAL
MAURINE PICKETT
ORLAND TODD
ELIZABETH SEALE
S. A. WILES
JOHN H. WRIGHT

LOUISE BLANKS
ALBERTA HARRINGTON
ANGIE THOMASSON
CAROLL HINSLEY
HERBERT TURNAGE
OTHO HARRELSON



B. S. U. Club

CHARLES MYRICK *President*

CORNELLE GREENHAW *Vice-President*

ADA CLARE WADE *Secretary*

DR. ALLEN *Faculty Member*

HERBERT TURNAGE

EARNEST SALLEE

JOSEPHINE RILEY

CLYDE HART

LEILA THOMAS

ELIZABETH SEALE

BERT PETERS





Art Club

ETHEL HUDELSTON
MISS UBIL

MRS. ALFRED HALL
DONNIE WATTS

ELOISE THOMPSON
ELMA GOODWIN
MARGARET MAURIN
HELEN WALKER