

JOE F. RUSHTON

RELTON MCCARROLL

## THE OUACHITONIAN

VOLUME XVII

PUBLISHED BY LITERARY SOCIETIES

1927

### STAFF

JOE F. RUSHTON . . . . .	<i>Editor-in-Chief</i>
RELTON MCCARROLL . . . . .	<i>Business Manager</i>
WILLIAM C. BRASHER . . . . .	<i>Art Editor</i>
BENJAMIN RUNYAN . . . . .	<i>Assistant Business Manager</i>
WILLIAM CONDRAY . . . . .	<i>Class Editor</i>
HOUCK REASONER . . . . .	<i>Athletic Editor</i>
C. E. ARNETT . . . . .	<i>Faculty Adviser</i>

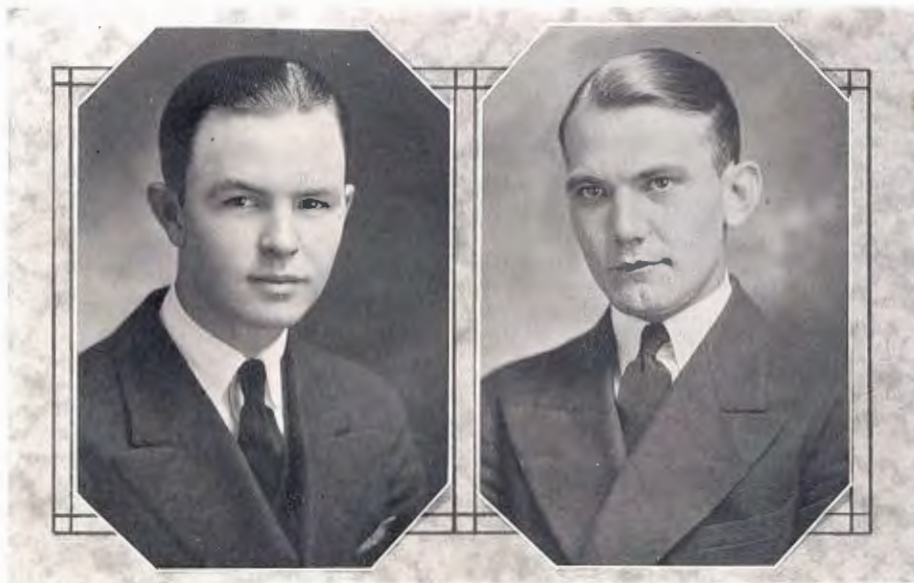
### OUACHITONIAN ASSISTANTS

IRENE MOORE	JOSEPHINE RILEY
MADGE WADE	ELIZABETH SLOAN



QUACHITONIAN  
1927





HERMAN WESTMORELAND

WILLIAM MOORE

## OUACHITA SIGNAL

HERMOND WESTMORELAND . . . . . *Editor-in-Chief*  
WILLIAM MOORE . . . . . *Business Manager*

The *Ouachita Signal* is the college weekly, designed to keep its readers informed of all the activities on the campus—athletic, social, and literary. Each issue is full of interesting news, and is read and enjoyed by the alumni as well as by the students. The members of the staff are chosen by their respective societies, and the offices are alternated between the societies. The Journalism classes are faithful contributors, and the student body as a whole is loyal to its publication.



## Signal Staff

LEE NICHOLS  
*Managing Editor*

PRUDENCE AMOS  
*Associate Editor*

LOUISE SEARCY  
*Associate Editor*

BRUCE PRICE  
*Assistant Business Manager*

GUNTER ENGLAND  
*Athletic Editor*

HOUCK REASONER  
*Assistant Athletic Editor*

EMMA STEED  
*Exchange Editor*

BESSIE MAE MATTHEWS  
*Local Editor*

RUTH HUGHES  
*Joke Editor*

GILBERT AND BYRD  
*Ash Can*

REPORTERS  
IRENE MOORE  
CARROLL HINSLEY  
LOIS ROYAL

PROF. C. H. OSBORNE  
*Faculty Editor*



## Pi Kappa Delta and Debating Teams

HERMOND WESTMORELAND . . . . . *President*  
 MELVIN CROWE . . . . . *Vice-President*  
 LLOYD SPARKMAN . . . . . *Secretary and Treasurer*  
 JOHN HARDIN WRIGHT . . . . . *Reporter*

*"Say first, of God above or man below,  
 What can we reason but from what we know?"*

—POPE, "The Essay on Man."



HE Ouachita chapter of the Pi Kappa Delta is one of the two chapters in Arkansas, the other being located at Henderson-Brown. At the National Convention held at Estes Park, Colorado, in March, '26, this province was re-apportioned to include Arkansas, Texas, Louisiana, and Alabama. The provincial meet will be held in Arkadelphia this spring, under the auspices of the Alpha chapter of Henderson-Brown and the Beta chapter of Ouachita. Ouachita was represented at the National Convention by Hermond Westmoreland.

### DEBARING TEAMS

Ouachita has this year contracted one of the heaviest schedules ever entered into by the college. This year is marked by the return of the young ladies to the forensic circle and they will engage in debates with Arkansas Teachers College and Henderson-Brown. The trio who will engage in these debates, are Misses Beatrice Rogers, Sylvia Webb, and Prudence Amos. These young ladies are formidable opponents and will assuredly win victories in their forensic tilts.

New men who make the squad this year are Lonnie Meachum, William McMillan, Jimmie Brewer, and Clyde Hart. Two of these young men have been champion debaters in high school and will add much to the calibre of our debating teams. The other two have also had debating experience and should win many victories for the Purple and Gold before they leave us.

Hermond Westmoreland is debating for the last time as a member of a Ouachita team. Melvin Crowe is debating for his third year. John Hardin Wright and Lloyd Sparkman are entering upon their second year of intercollegiate debating. These old men coupled with new men should form winning combinations and much is expected of these battling Sophists in their forensic clashes this Spring.

The schedule follows:

Melvin Crowe and Jimmie Brewer meet Baylor at Waco, and College of Ozarks here.

John Hardin Wright and William McMillan go on the road to meet Arkansas Teachers College and the University of Arkansas in their auditoriums.

Lloyd Sparkman and Clyde Hart, Lonnie Meachum and Hermond Westmoreland will engage teams invading Arkadelphia.

These teams will represent the following: Oklahoma Baptist University, Hendrix College, Harding College, Henderson-Brown.





## Ministerial Association

### OFFICERS

HERMOND WESTMORELAND . . . . .	<i>President First Quarter</i>
ALLEN B. COOPER . . . . .	<i>President Second Quarter</i>
LAWRENCE H. DAVIS . . . . .	<i>President Third Quarter</i>
LEAMON D. EPPINETTE . . . . .	<i>President Fourth Quarter</i>

Almost a score and ten years ago the Ministerial Association of Ouachita College was organized. Every young man in the student body who has accepted the ministry as his life's calling is eligible for membership. Like all other organizations on the campus, the Association is under the supervision of the school. Its work is calculated to be of definite service to every member in giving to each one a better conception of what his ministry may mean and also in furnishing a source of spiritual development while courses of study are pursued.

The influence of this organization is profoundly felt on the campus, as well as in other sections of the state. Everyone is actively interested in some phase of church work, many of the members being pastors of churches. During vacation time dozens of meetings are conducted by these student preachers in which hundreds of people are led to accept Christ.

So far as the members of the Ministerial Association are concerned, they have just one distinguishing characteristic—they have been called of God for a specific service. They strive to so conduct themselves that the stranger will not readily know them to be ministers, but will not be surprised when he learns that they are.



QUAINTONIAN  
1927







Y. W. A.

- MARTHA TULL . . . . . *President First Quarter*  
 LOUISE SEARCY . . . . . *President Second Quarter*  
 EMMA STEED . . . . . *Vice-President First Quarter*  
 JOSEPHINE RILEY . . . . . *Vice-President Second Quarter*  
 MRS. E. M. BLAKE, *Counselor*

Ouachita Y. W. A. was organized in 1911, at which time Mrs. Blake was elected counselor. Through this position she has won the esteem and admiration of every girl who has been a member, and we wish by this means to give honor to whom honor is due and express our appreciation of the faithful leadership she has shown.

Everyone in Cone-Bottoms Hall is a member of this organization, and for the past three years Ouachita has been the first Y. W. A. to reach the standard. The programs are inspirational and educational, being based on missions and the state work of Baptists.

Officers are elected only twice a year, dividing the school year into two semesters. The officers form a cabinet, which meets each week, to attend to the business and pray for the advancement of the kingdom work. It is hoped that each girl may remember always her training in the Y. W. A. and the watchword, "And they that be wise shall shine as the brightness of the firmament, and they that turn many to righteousness as the stars for ever and ever."—Daniel 12:3.



## Life Service Band

### PRESIDENTS

PRUDENCE AMOS  
*First Quarter*

WILSON ROYAL  
*Second Quarter*

THEO JAMES  
*Third Quarter*

JOSEPHINE RILEY  
*Fourth Quarter*

In the great universe of God's handiwork there is a place for each element, each plant, and creation of his thought; so, in his greatest thought realm, Man, there is a place for everyone. A new task, like no other, awaits each one, because he is like no other individual. No other person on earth can do your task as well as yourself.

We, the members of the Life Service Band, believe that God has honored us by calling us to be his servants. We have offered our lives for service, and believe that it is our duty to serve him.

*So nigh is grandeur to our dust,  
So near is God to man,  
When duty whispers low "thou  
must,"*

*The youth replies, "I Can."*

—EMERSON.





## Pre-Med Club

### OFFICERS

TRUETT BURNSIDES	.....	<i>President</i>
HORACE POWER	.....	<i>Vice-President</i>
RELTON MCCARROLL	.....	<i>Secretary</i>
CHARLES MYRICK	.....	<i>Treasurer</i>

### MEMBERS

JOE RUSHTON	BEN RUNYAN	HARROLL MCCARROLL
RELTON MCCARROLL	JOE NICHOLS	EDWIN BYRD
LEONE MOELLER	CHARLES MYRICK	ROBERT MORRIS
TRUETT BURNSIDES	EDWARD PUGH	THOMAS BLAKELY
LOYCE BILES		JOHN R. DALE



# QUAINTONIAN

1927

**HALL OF FAME**

**PAINTER**  
  
*Helena Mae*

**FARMER**  
  
*Ruth Dorkson*

*Hester McBride*  


*Ruth Dorkson*  


*Esther Empire*  


*Bessie Mae Matthews*  


**SAILOR**  


**SECRET**  


*Mildred Smith*

*Thelma Mae*  


**CARPENTER**  


**QUAINTON COLLEGE**

**CHIEF**  


**KEWPIE KLUB**

*Pauline Goodwin*  


*Edna Goodwin*  


**FIREMAN**  
  
*Flora McDonald*

**JOY**  
  
*Edna Goodwin*

*Harriet Wall*  


**SOLDIER**  
  
*Flora McDonald*

**FLYER**  
  
*Harriet Wall*



## Student Council

MARTHA TULL . . . . . *President*  
 EMMA STEED . . . . . *Vice-President*  
 PRUDENCE AMOS . . . . . *Secretary*  
 MADGE WADE . . . . . *Treasurer*

### CLASS REPRESENTATIVES

MARIE LANDES . . . . . *Senior Class*  
 HELEN SCOTT . . . . . *Junior Class*  
 LAWRENCE BRITT . . . . . *Sophomore Class*  
 LORETHA STUART . . . . . *Freshman Class*

