



*I*N which the reader is introduced to those who direct the story of college life. They have taken dull characters, and moulded them into a beautiful drama of love, heroism, and battle. Who could expect more?



CHAPTER TWO
THE AUTHORS



Charles Ernest Dicken, LL.D., D.D.



Open an appreciation of our President is impossible, because words cannot express the emotions of the heart. The two words that best describe his relation to Ouachita and Arkansas Baptists are service and devotion. No individual in Arkansas has the interest and welfare of Ouachita at heart as he has; no one is so willing to give himself so completely to the institution as he, and no one can serve her in so excellent a manner as he.

This year we are celebrating the greatest event since the founding of the institution—the completion of the half-million dollar endowment.

More than any other person he deserves the credit for raising this huge sum. He found Ouachita a tottering institution; he has made it a sound, permanent college.

By Doctor Dicken's ability to meet men and mingle in gatherings of whatsoever character, by his apt words and ready pleasantry, he has reflected honor upon us, and won for himself a place of distinction among the educators of the nation. By his urbanity, sagacity, poise, and scholarship he has taken a seat of distinction among the wise. Among the nation's leaders, civil and military, he has never failed to acquit himself happily and increase the prestige of the institution of which he is chief.

His greatest service to Ouachita lies in his influence over the students. No matter is so important for him to shun, or so trivial for him to ignore. He knows the students and longs for their welfare, and he gives himself completely that they may learn to live the "abundant life." His memory is already erected in the sons and daughters of Ouachita who have passed through his moulding hands; the record of his virtues is inscribed on their hearts, and flowers in their lives. Those who know him and love him know that he is the personification of service, fairness, devotion, firmness, ability, and solicitude.

"When wasteful wars shall statues overturn,
And broils root out the world of Masonry,
Nor Mars his sword, nor war's quick fire shall burn
The living record of our memory.
'Gainst death and all-oblivious enmity
Shall you pace forth; your praise shall still find room
Even in the eyes of his posterity
That wear this world out to the ending doom.
So till the judgment that yourself arise,
You live in this, and dwell in lovers' eyes."





CHARLES ERNEST DICKEN, D.D., LL.D.
President





Faculty

A. M. CROXTON, A.M., Th.D.

Bible and Greek

A.M., Furman University, 1889; Th.D., Southern Baptist Theological Seminary, 1895; Postgraduate Work in University of Mississippi, 1895-96; Superintendent of Public Schools, Union County, North Carolina, 1901-02; Ouachita College since 1916.

B. F. CONDRAY, A.B., Ph.M., Registrar

Philosophy and Education

A.B., Ouachita College, 1894; A.B., Leland Stanford, Jr., University, 1897; Ph.M., University of Chicago, 1904; Graduate Student, University of Chicago, Summer 1923; Principal of Rison High School, 1894-96; Professor of Mathematics, Ouachita College, 1897-1904; Assistant Professor of Mathematics, Mississippi Agricultural and Mechanical College, 1904-05; Associate Professor Ibid, 1905-08; Superintendent of Schools, Arkadelphia, Ark., 1908-14; Ouachita College since 1922.

MRS. ESTELLE McMILLAN BLAKE

Associate English

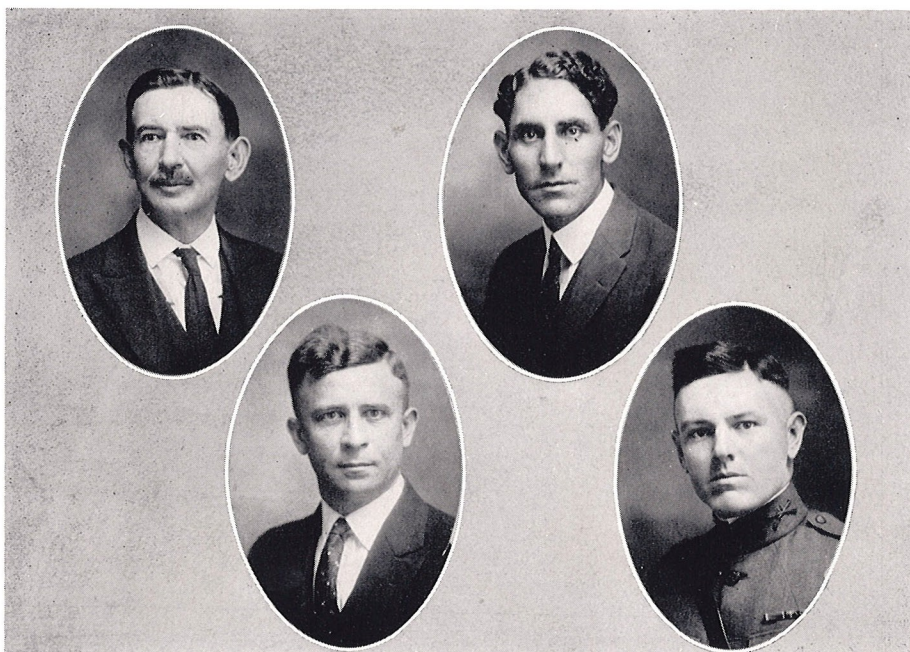
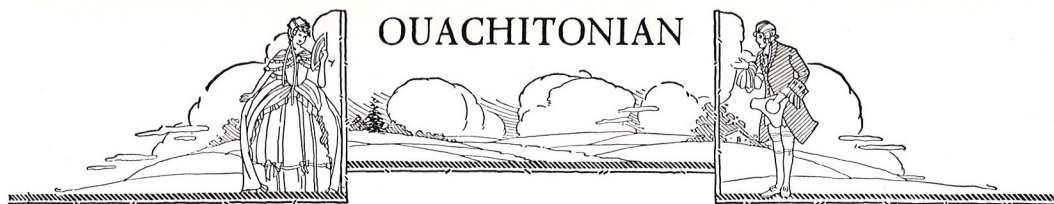
Graduate Sam Houston Normal; Postgraduate Work University of Chicago, 1894; Columbia University, 1903-04. Began teaching in Ouachita, 1887; taught here sixteen years; taught in New York City, 1903-05; taught in University of Arkansas, 1905-11; Ouachita College since 1911.

CLARENCE E. ARNETT, A.B.

History and Economics

Indiana State Normal School; A.B., Franklin College; Graduate Work in University of Chicago; Instructor in Franklin College, 1916-18; Ouachita College since 1918.





Faculty

PETER ZELLARS, A.B., A.M.

Latin

A.B., Mercer University, 1886; A.M., Mercer University, 1925; President John Gibson Institute; Superintendent of Schools at Elberton and Commerce, Georgia; Ouachita College since 1913.

CARL G. DAVIS, A.B., A.M.

Chemistry and Physics

A.B., 1910, University of Arkansas; A.M., Ibid, 1924; University of Arkansas Experiment Station, Department of Animal Pathology and Bacteriology, 1911-12; Member Station Staff, University of Arkansas, 1912-13; Head of Science Department, Second District Agricultural School, 1913-15; Washington University Medical School, 1915-16; Military Service Medical Department, 1917-19; Ouachita College since 1919.

CLIFFORD H. OSBORNE, A.B., A.M.

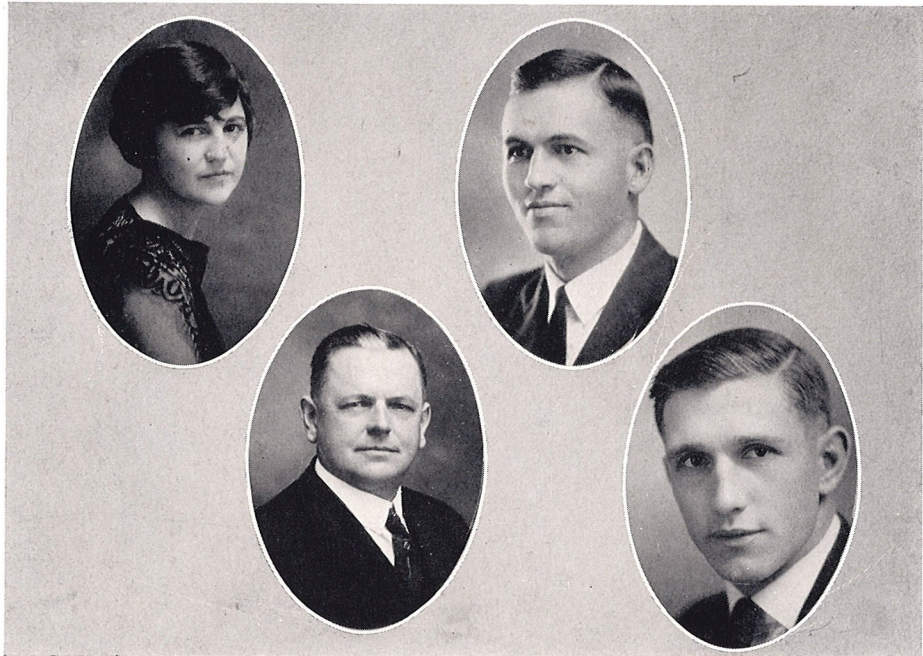
English

A.B., Indiana University, 1914; A.M., Ibid, 1915; Principal High School, Hymera, Indiana, 1915-16; Superintendent of Schools, Ibid, 1916-18; Superintendent of Schools, New Carlisle, Indiana, 1918-19; Instructor in English, Indiana University, 1919-20; Superintendent of Schools, Jefferson, Oklahoma, 1920-22; Instructor in English, Logansport, Indiana, High School, 1922-23; Ouachita College since 1923.

CAPTAIN RAY E. PORTER, U. S. Army

Commandant and Professor Military Science and Tactics





Faculty

MISS HAZEL JONES, A.B.

Instructor in History and Economics

A.B. and B.M., Ouachita College, 1922; Graduate Student George Peabody College, Summer 1923; Department of History, DeWitt High School, 1922-23; Ouachita College since 1923.

WILLIAM CHESTER MUNN, M.A.

Biology and Geology

A.B., Ouachita College, 1915; M.A., Ibid, 1921; Graduate Student George Peabody College, Summer 1921; Graduate Student University of Chicago, Summer 1923; Principal Russellville High School, 1916-18; Army Y. M. C. A., 1918-19; Science, Arkansas College, 1919-20; Ouachita College since 1920.

PAUL E. WHITEHOUSE, B.A., M.A.

Modern Languages

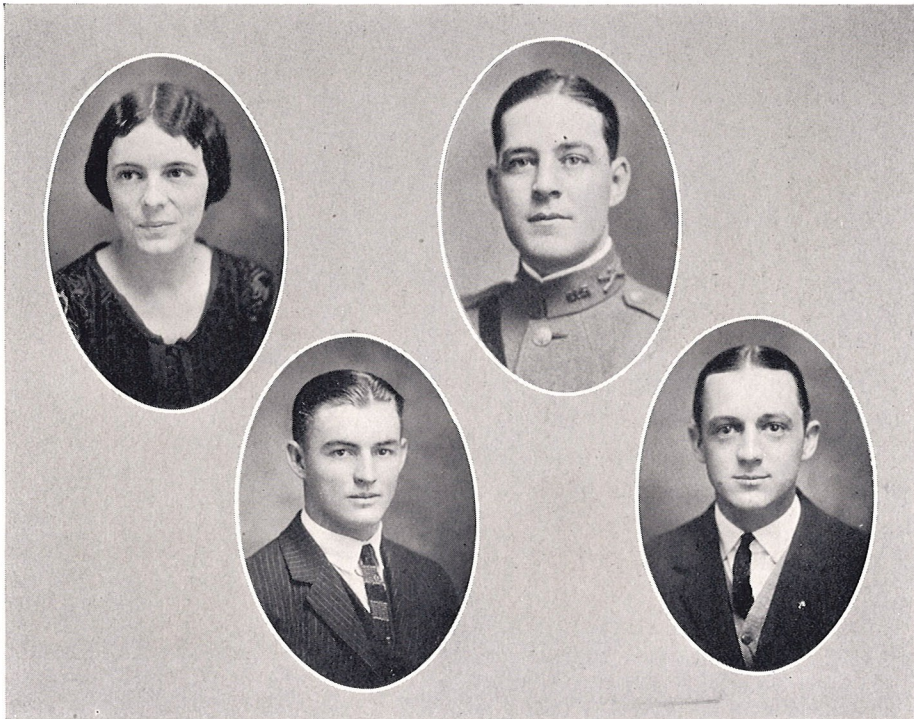
B.A., Bucknell University, 1898; M.A., Ibid, 1899; Graduate Student Modern Languages, University of Pennsylvania, 1899-1900; University of Leipzig, 1900; Instructor in German, Syracuse University, 1900; Miller Fellow Modern Languages, University of Chicago, 1902; Instructor Modern Languages, Bucknell University, 1903-04; Assistant Professor Modern Languages, Bucknell University, 1904-08; Instructor in German, University of Washington, 1908-12; Graduate Student Modern Languages, University of California, 1912-16; Candidate for Ph.D., University of California, 1917; Head of Modern Language Department, Pasadena Army and Navy Academy, 1919-20; Professor of Romance Languages, Shorter College, 1921-22; Ouachita since 1922.

MORLEY JENNINGS, B.S.

Mathematics and Athletic Director

Student Albion College; B.S., Mississippi A. & M.; Ouachita College since 1912.





Faculty

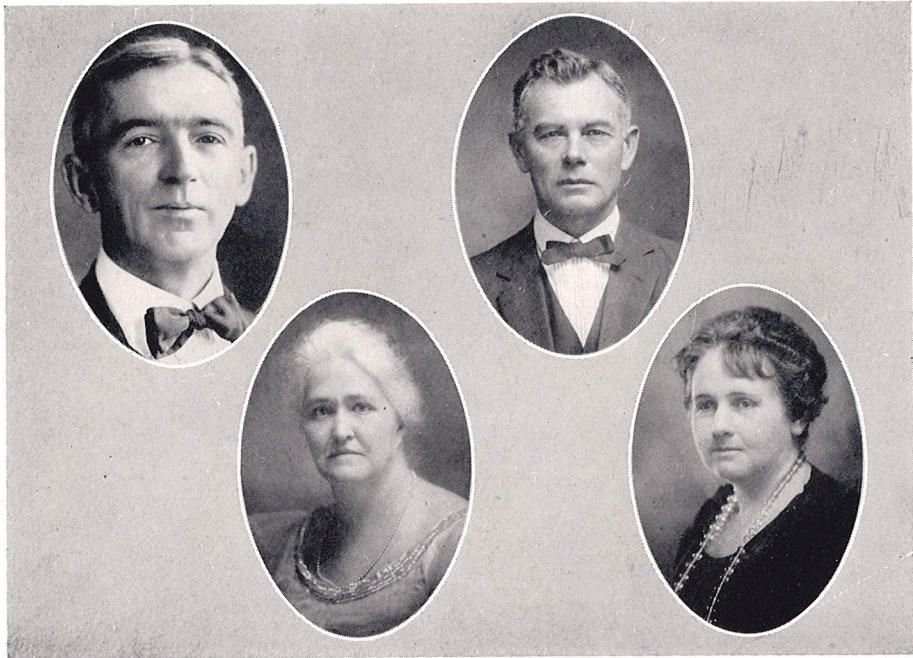
MISS JENORA CRUTCHER
Instructor in Modern Languages
A.B., Woman's College, Hattiesburg, Mississippi.

CAPTAIN IRVINE C. SCUDDER
Assistant Professor Military Science and Tactics

MR. ROBERT COLE
Assistant Athletic Coach
A.B., Ouachita College.

MR. WAYNE MCCAULEY
Bookkeeper; Director of Band
A.B., Ouachita College.





Administration Assistants

H. L. WINBURN, D.D., LL.D.

Lecturer Bible Department

PROF. J. G. LILE

Endowment Secretary

MISS MARY LOUELLA GITCHELL, A.B., M.A.

Dean of Women

A.B., Des Moines College, 1918; M.A., Iowa State University, 1921; Teacher in Public Schools, Marietta, Ohio, 1904-14; Principal Grant Consolidated High School, Swea City, Iowa, 1915-17; Superintendent of Schools, Thompson, Iowa, 1918-20; Head of English Department, Louisiana Institute, 1921-22; Ouachita College since 1923.

MRS. SALLIE CARMICAL

Nurse





Administration Assistants

STAFF SERGEANT JOHN MAURER, U. S. Army

FLOYD H. GOODMAN
Bookkeeper

MISS GRACE BUSSELL
Librarian

MISS LILLIAN BUTCHER
Secretary to President



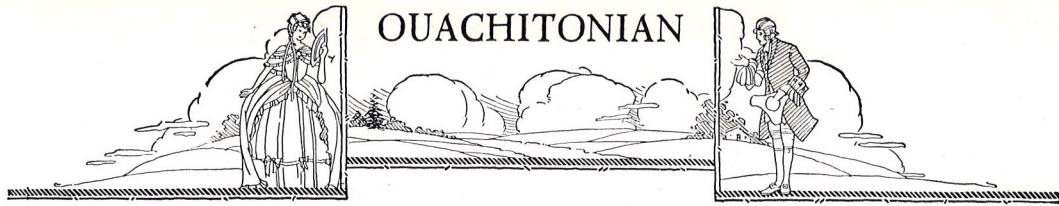


LIVINGSTON H. MITCHELL

Director of Conservatory

Piano, Private Student of Adolph Koelling, Chicago Musical College; Wager-Swayue, New York City; Emil Liebling, Chicago; Maurice Moszkowski, Paris; Mayer-Mahr, Klindworth-Scharwenka Conservatory, Berlin; Howard Wells, Chicago; Rudolph Reuter, Chicago Musical College; Auditor's Piano Class, Leopold Godowski; Auditor's Piano Class, Josef Lehvinne. Pipe Organ, J. H. Simmons, Omaha; Mason Slade, Paris; Harmony and Theory, Mary Frances Frothingham, Chicago Musical College; Frederick Grant Gleason, Chicago Conservatory; Rossitor Cole, Columbia University; Emile Schwartz of the Paris Conservatoire, Director of Music since 1910.





Conservatory Faculty

MISS MAUDE WRIGHT

Piano and History of Music

Ouachita College 1914-15; Graduate Cincinnati Conservatory, 1917; completed course in Public School of Music, C. C. of M., 1917; Special course Public School Music, Columbia University, New York, Summer 1919; Lehuinne Class, 1921; Private Pupil of Howard Wells, Chicago, 1921; Ouachita College since 1920; Private Student Ernest Hutchinson, Chautauqua, N. Y., '24.

ALFRED HALL, F.R.C.O.

Voice and Pipe Organ

F.R.C.O., London, England, 1903; Graduate Trinity College, London, 1900; F.R.C.O. (Honorary), New York; Organist and Choir Master, New North Church, Edinburgh; Ouachita College, 1916-21; Coker College, 1921-23; Ouachita College since 1923.

MISS LOIS PATRICIA MCCALL

Violin

A.B., Baylor College, 1923; Graduate Violin, Ibid., '22; Postgraduate Violin, Ibid., '23; Artists' Course in Violin, Ithaca Conservatory, N.Y., '24; Private Pupil Caesar Thomson, Ouachita College since 1924.

MISS FRANKIE CONDRAY, A.B., B.O., B.E., M.E.

Head of Department of Expression and Physical Culture

A.B. and B.O., Ouachita College, 1920; B.E., Columbia College of Expression, Chicago, 1921; Graduate Student, Ibid., Summer 1922; Graduate Student Columbia University, Summer 1923; Ouachita College since 1921. M.E. Columbia College of Expression.

MISS ALMERIA R. QUINN

Assistant in the Department of Expression and Physical Culture

Graduate Columbia College of Expression, 1922; Student Morse School of Expression, Summer 1923; Teacher of Expression, Arkansas College, 1922-23; Ouachita College since 1923.



OUACHITONIAN

