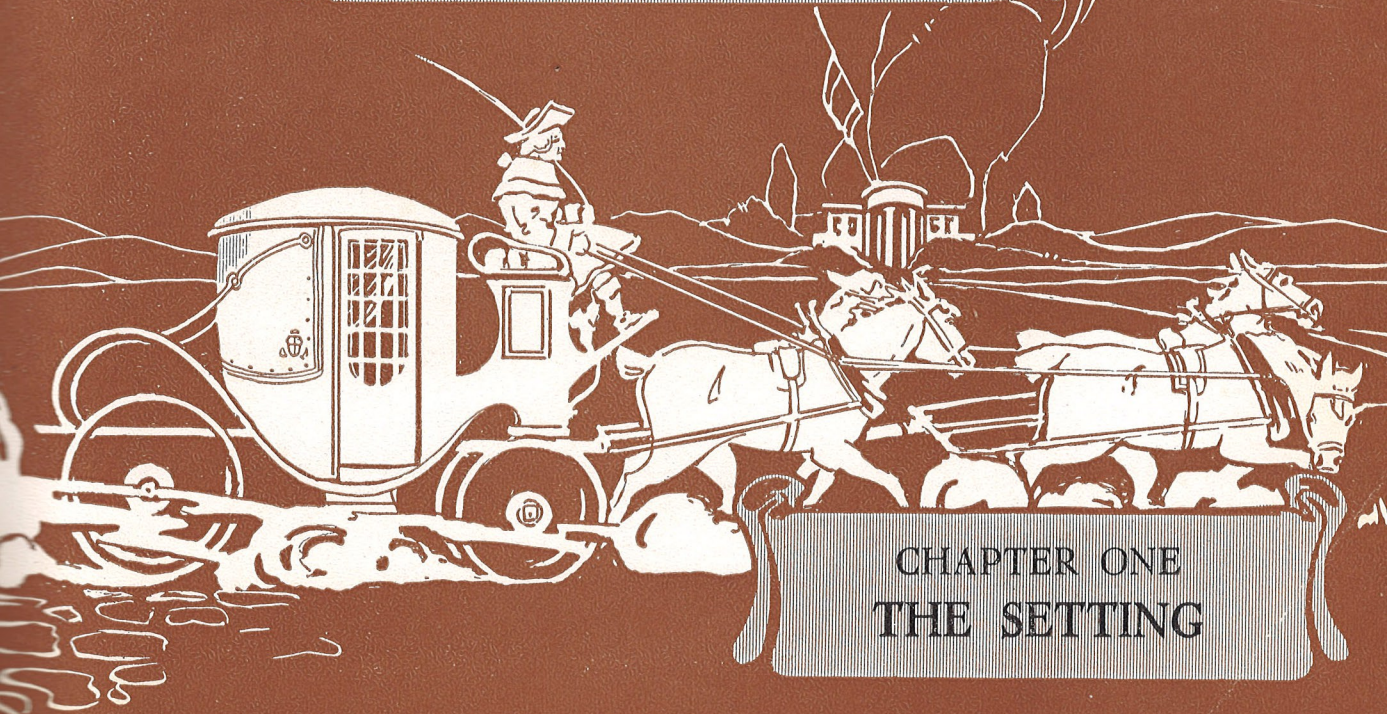


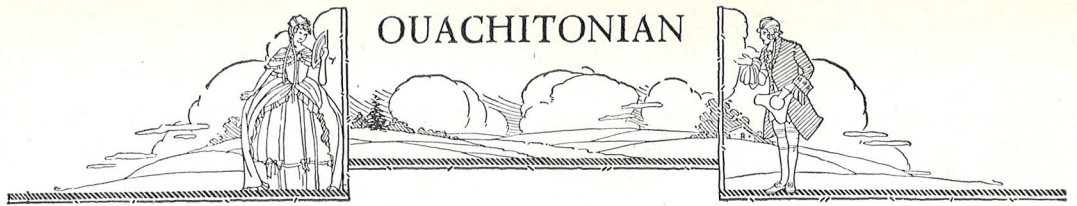


*I*N which the reader views the scenes surrounding our story. He will see structures of brick and mortar, the beauties of campus, and the quiet atmosphere that make our story so real to the heart of every student.



## CHAPTER ONE THE SETTING



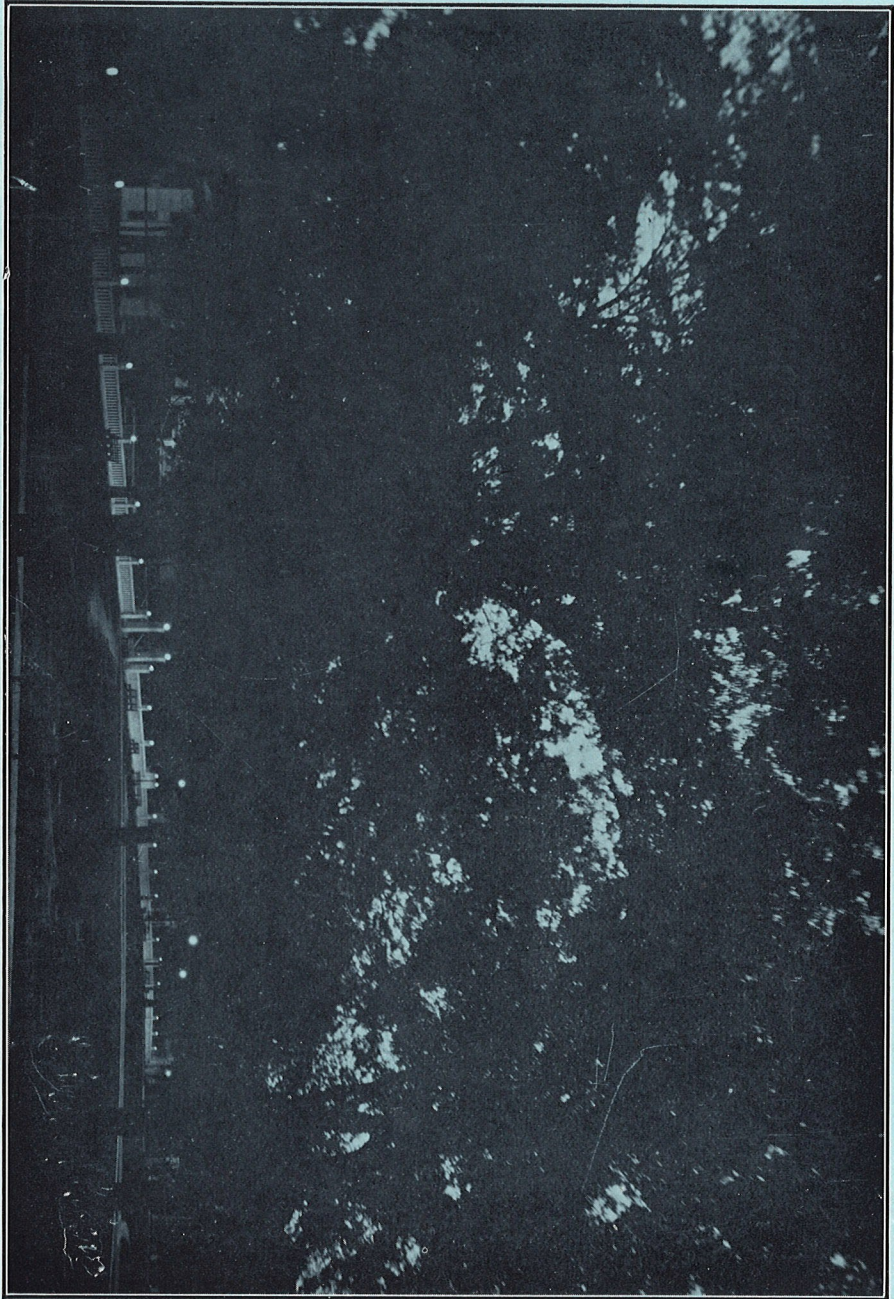


*When I am living in the midlands,  
That are sodden and unkind,  
I light my lamp in the evening:  
My work is left behind;  
And the pleasant scenes of college days  
Come back into my mind.*





*At night when all is still*







*Where many a son has come and gone*





*The walk that never grows old*





CONE-BOTTOMS HALL  
*The girls love it because it's home*





*Where nymphs and fairies play*





*When shadows fall on the President's home*