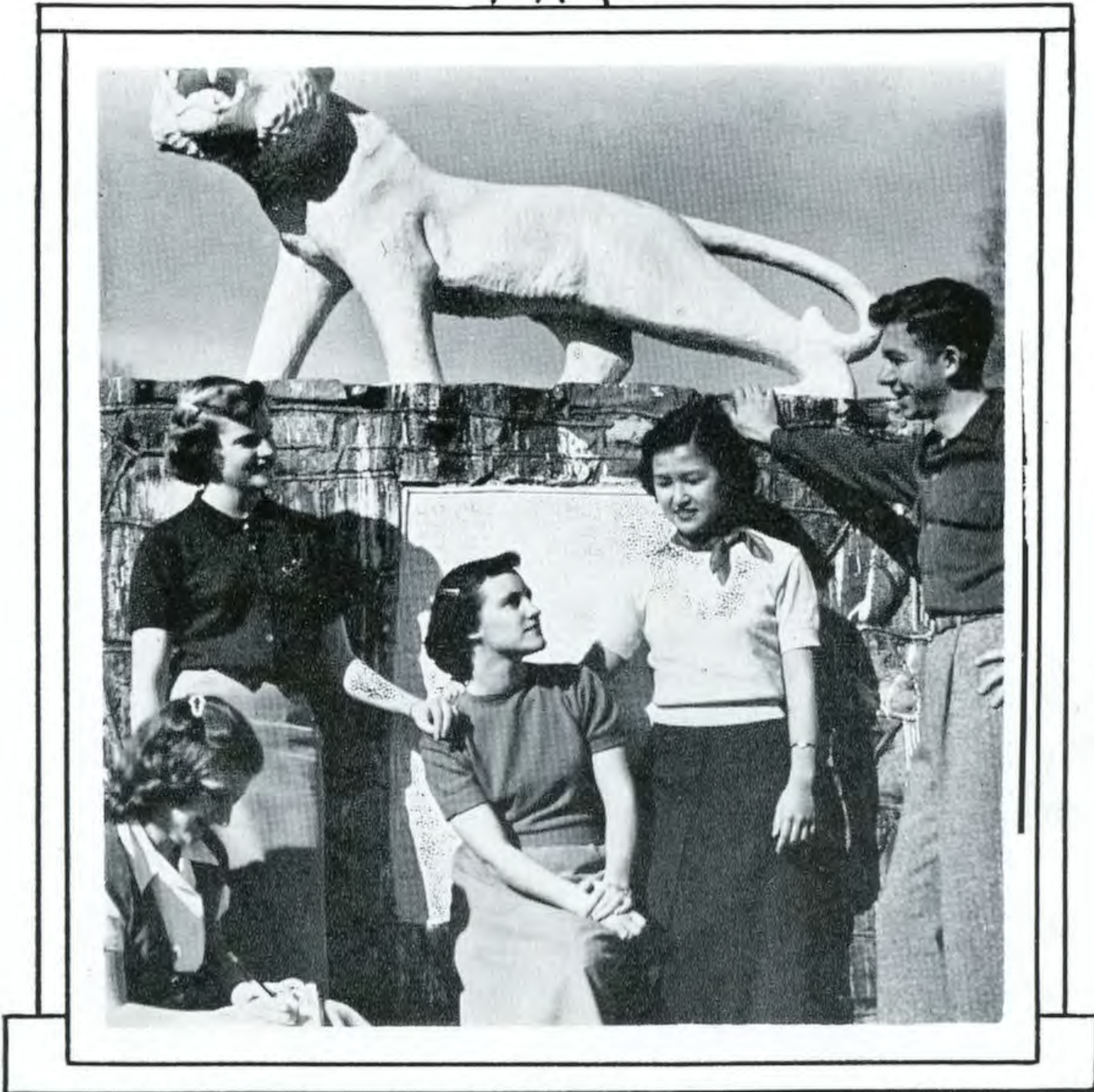


# SOPHOMORE CLASS



Officers: Loveta Smith, secretary; Alice Ann Newman, vice-president; Pat Crittenden, treasurer; Chieko Sato, senator; and Nathan Barrett, president.

# THE 1952 SOPHOMORE CLASS

Allred, Homer  
*Green Forest*

Apon, Eugene  
*Hopper*

Ashby, Betty  
*Houston, Texas*



Ashby, Edna  
*Houston, Texas*

Babcock, John O.  
*Camden*

Barrett, Nathan  
*England*



Bever, Henry S.  
*Pine Bluff*

Blagg, Nina Sue  
*Little Rock*

Brock, William  
*Little Rock*



Brown, Hugh E.  
*Pine Bluff*

Burnett, Oscar  
*Little Rock*

Burroughs, Jo Anne  
*Hope*



Camp, Edith  
*St. Louis, Mo.*

Caughman, Mrs. Lawrence  
*Benton*

Cox, Jo Anne  
*Clarksville*



# THE 1952 SOPHOMORE CLASS

Cox, Shirley  
*Ward*



Craig, Mason  
*Stuttgart*

Crittenden, Pat  
*Benton*

Davidson, Nancy  
*Cove*



DePriest, Gurtha  
*Berryville*

Ensminger, Betty June  
*McGehee*

Eubanks, Robert  
*Augusta*



Everett, Wilbur W.  
*Benton*

Ford, James  
*Hot Springs*

Gaskins, Barbara  
*Wynne*



Glascock, Virginia  
*Hot Springs*

Haltom, Homer  
*Arkadelphia*

Hargis, Klois  
*Warren*



Harvill, Laverne  
*Altheimer*

Higoshi, Hosuke  
*Keohha, T. H.*

# THE 1952 SOPHOMORE CLASS

Hiland, Lou Ann  
*Little Rock*

Hohn, Arnette  
*Newport*

Holland, Dan  
*Pine Bluff*



Holland, Ruth  
*Heber Springs*

Hollon, Ellis  
*DuValls Bluff*

Inge, Henry  
*North Little Rock*



Jackson, Bedford  
*Bentonville*

Johnson, James D.  
*Hope*

Kendrick, Earnestine  
*Dumas*



King, Mary  
*Warren*

Lester, Betty  
*Lewisville*

Lewis, LaVerne  
*El Dorado*



Lewis, Phillip  
*Mulberry*

Meador, Carolyn  
*North Little Rock*

Miller, Charles  
*Arkadelphia*



# THE 1952 SOPHOMORE CLASS

Miller, Robert  
*DeWitt*



Morgan, Dorothy May  
*Hot Springs*

McBay, Herschel  
*Hope*

McGarrity, C. E.  
*Pine Bluff*



McManus, Marion H.  
*Thornton*

Newman, Alice Ann  
*Friendship*

Nix, LaDosca  
*Arkadelphia*



Owens, Wilma  
*Van Buren*

Pannell, Waymond  
*Benton*

Parks, Walter A.  
*El Dorado*



Pogue, Dale  
*Ft. Smith*

Powell, Louise  
*Gassville*

Puckett, Dennis  
*Pine Bluff*



Reeves, Byron  
*Little Rock*

Rogers, Dorothy  
*Mena*

# THE 1952 SOPHOMORE CLASS

Sato, Chieko  
*Honolulu, T. H.*

Sexton, Martha  
*Cabot*

Shaddox, Robert  
*Harrison*



Sherwood, James  
*Crownsville, Md.*

Short, Carolyn  
*Hot Springs*

Simmons, Floyd  
*Little Rock*



Smith, Loveta  
*Corning*

Sparks, Layne  
*Mt. Ida*

Stephens, Bobbie  
*Pine Bluff*



Stephens, Harold  
*Harrison*

Sullivan, Anabel  
*Lonoke*

Summers, Leroy  
*DeWitt*



Tedford, Harold  
*N. Little Rock*

Taylor, Sammy  
*Ozark*

Teeter, Theva Belle  
*Tiller*



# THE 1952 SOPHOMORE CLASS

Thrash, Melvin  
*Hope*

Thrash, Viva Edd  
*Hope*

Thompson, James  
*Wasco, Calif.*

Titsworth, Pat  
*El Dorado*

Watson, Robert  
*Arkadelphia*

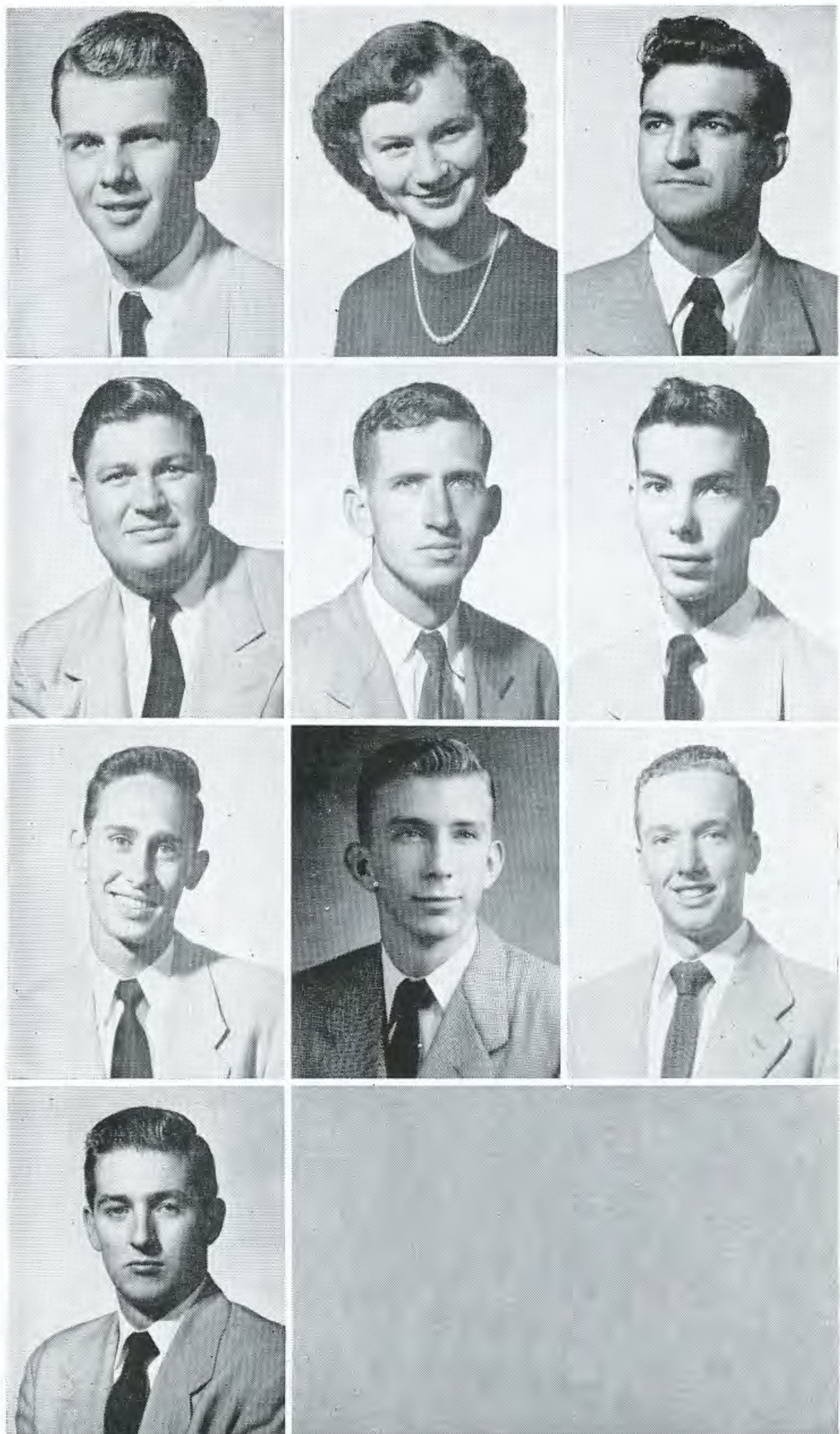
White, Jimmy  
*Pine Bluff*

Wilson, James M.  
*Pine Bluff*

Wilson, James R.  
*Texarkana*

Wright, Joe  
*Mabelvale*

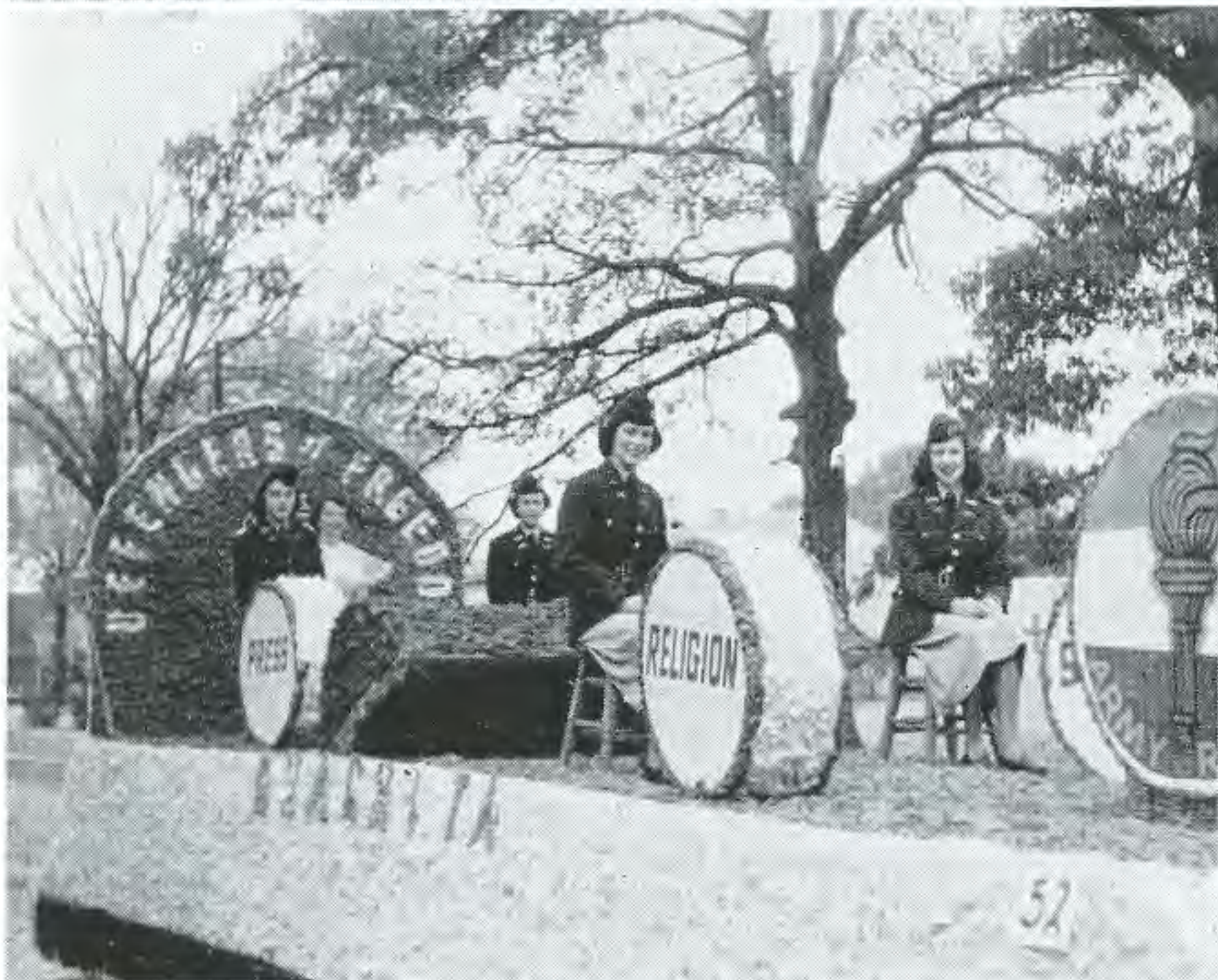
Branscum, Bill  
*Little Rock*



# THANKSGIVING DAY

*My, how you've grown.  
Army's Reserve Corp.*

*Ouachita stars.  
Purexed for Turkey Day.*





# FRESHMAN CLASS



Officers: Kenneth Presswood, vice-president; Bob Bostian, senator; Anna Sue Phillips, secretary; Richard Luster, president, and Jerry Jackson, treasurer.

# THE 1952 FRESHMAN CLASS



Allen, Billy Ray . . . . . *Ravanna*

Allen, Judy . . . . . *Eudora*

Allred, Eileen . . . . . *Osage*

Allred, Marion . . . . . *Malvern*

Arnold, Thelma . . . . . *Van Buren*

Arrington, Billy Joe . . . *N. Little Rock*

Barnett, Frances . . . . . *Rison*

Bates, Peggy . . . . . *El Dorado*

Bearden, Billie . . . . . *Gurdon*

Beaty, Betty . . . . . *Carlisle*

Black, Lula Mae . . . . . *Gurdon*

Bonds, Teresa . . . . . *Blevins*

Bostian, Robert . . . . . *Morrilton*

Bradley, J. C. . . . . *West Helena*

Brewer, Luther G. . . . . *Columbia, Tenn.*

Brooks, Charles . . . . . *Hot Springs*

Brown, Analene . . . . . *West Helena*

Brown, Gertrude . . . . . *Mena*

# THE 1952 FRESHMAN CLASS

Brown, Gracie . . . . . Pine Bluff

Brown, William Ray . . . . . Morrilton

Buffington, Barbara . . . . . Ashdown



Burnett, Lillie Ruth . . . . . DeWitt

Caldwell, Carroll . . . . . Little Rock

Caldwell, Patsy . . . . . Arkadelphia



Callaham, Max . . . . . Nashville

Carter, William . . . . . Crossett

Clements, Charlene . . . . . El Dorado



Clinkingbeard, Wayne . . . . . Mountain Home

Coates, Jacquelyn . . . . . Magnolia

Coles, Elizabeth . . . . . Pine Bluff



Cooper, Carlos . . . . . Des Arc

Crawford, Sammye . . . . . Arkadelphia

Denton, Duane . . . . . Manning



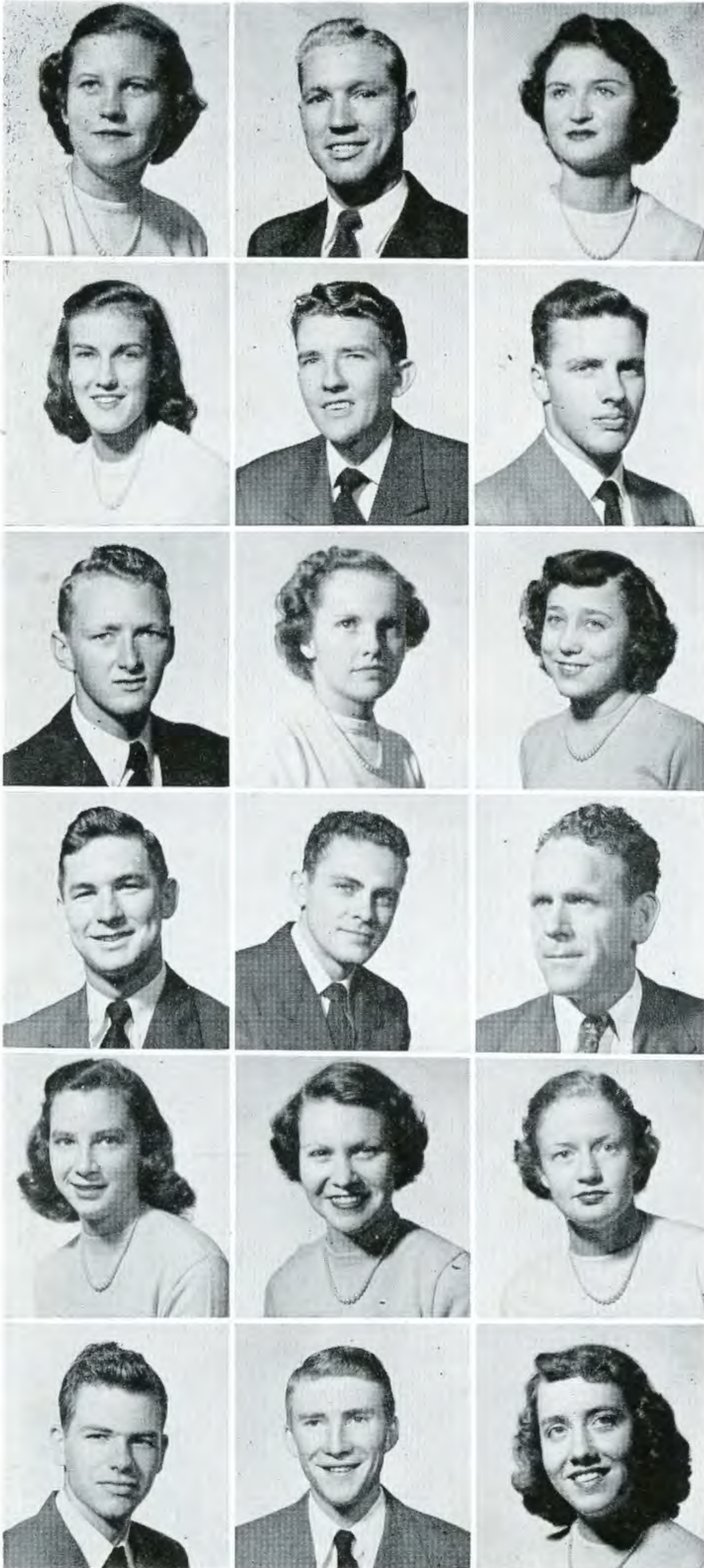
Driver, James Hill . . . . . West Helena

Dryer, Nadine . . . . . Ozark

Elzey, Gloria . . . . . Van Buren



# THE 1952 FRESHMAN CLASS



England, Anne . . . . . *De Queen*  
 Evans, Lloyd . . . . . *Thornton*  
 Farris, Anne . . . . . *Biscoe*  
  
 Fish, Diana . . . . . *Star City*  
 Frazier, J. P. . . . . *Oklahoma City, Okla.*  
 Gilbert, Tommy . . . . . *Paris*  
  
 Gladden, James . . . . . *Arkadelphia*  
 Goodner, Edna . . . . . *Oden*  
 Gravenmier, Dora Nell . . . . . *Morrilton*  
  
 Greer, Melvin . . . . . *Watson*  
 Guiles, John . . . . . *Texarkana*  
 Harvey, Raymond . . . . . *Hot Springs*  
  
 Haynes, Kay . . . . . *Lewisville*  
 Hodges, Helen . . . . . *Harrison*  
 Holt, Nylwon . . . . . *Texarkana*  
  
 Ingram, Stanley . . . . . *Blytheville*  
 Irish, Jerald . . . . . *Arkadelphia*  
 James, Cleo Fay . . . . . *McGehee*

# THE 1952 FRESHMAN CLASS

James, Theo May . . . . . *McGehee*

Jameson, Doyle . . . . . *El Dorado*

Jinks, Douglas . . . . . *El Dorado*



Johnson, James E. . . . . *Paducah, Ky.*

Johnston, Bettye . . . . . *Vandervoort*

Jones, Nell . . . . . *Stephens*



Joplin, Shirley . . . . . *Hatfield*

Keeland, Eugene . . . . . *Greenfield, Calif.*

Kemp, Lowader . . . . . *Hot Springs*



Kerce, Mary Beth . . . . . *Van Buren*

Lawrence, Harold . . . . . *Malvern*

Lewis, William . . . . . *Helena*



Lewis, Muriel . . . . . *Smackover*

Little, Billy Wayne . . . . . *Huttig*

Long, James E. . . . . *Little Rock*



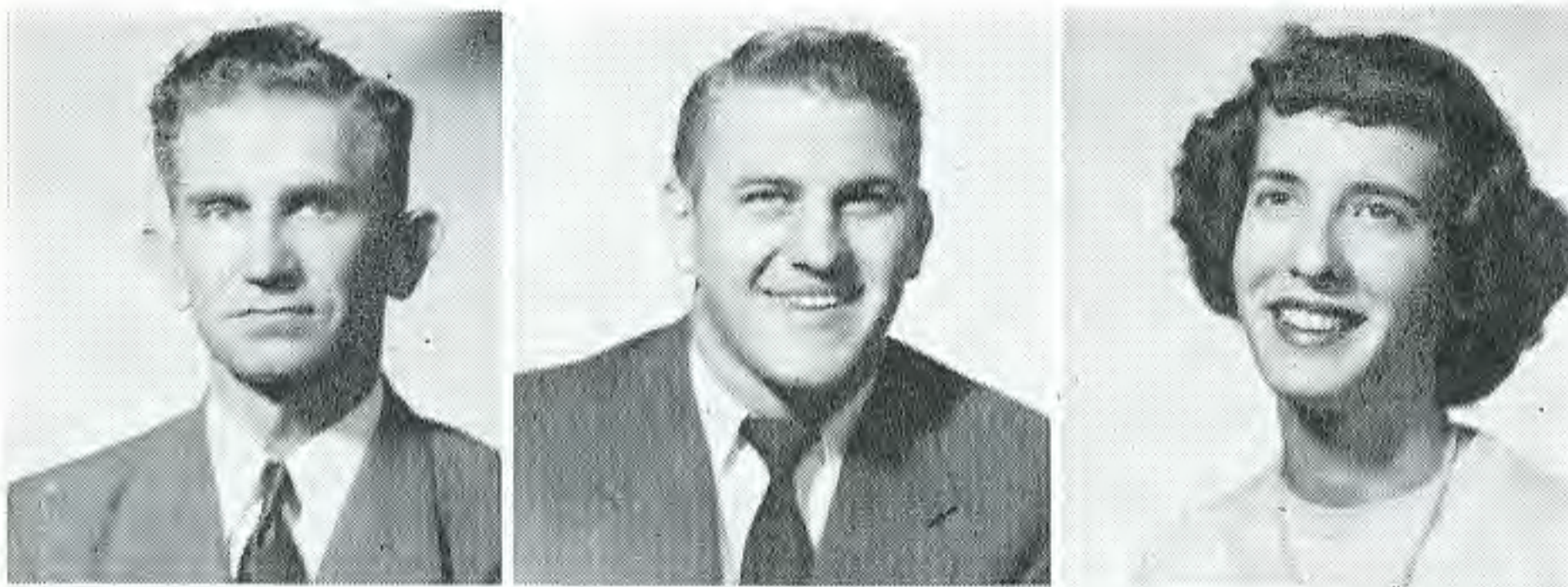
Looney, Jessie . . . . . *Cullendale*

Luster, Billie Hall . . . . . *Jonesboro*

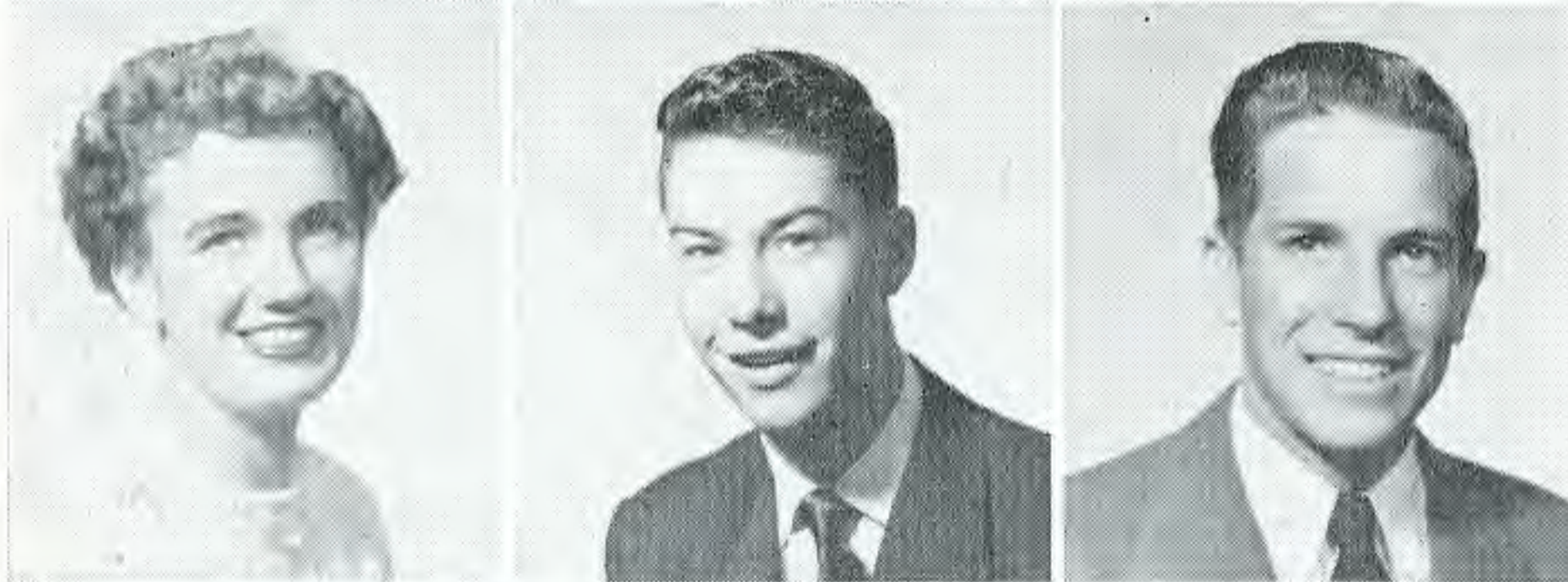
Luster, Richard . . . . . *Little Rock*



# THE 1952 FRESHMAN CLASS



Mangum, Alvis . . . . . *Hot Springs*  
 Marley, Charles . . . . . *Ft. Worth, Tex.*  
 Martin, Ruby . . . . . *Norfolk*



Massey, Jeannine Word . . . . . *Pine Bluff*  
 May, Phillip . . . . . *Fordyce*  
 Meador, Richard . . . . . *Arkadelphia*



Milam, Bill . . . . . *Alma*  
 Moody, Ella Mae . . . . . *Ward*  
 Moore, Alvis . . . . . *Walnut Ridge*



Moss, Gary . . . . . *Columbia, Tenn.*  
 McCarroll, Marion . . . . . *Pine-Bluff*  
 McCoy, Glenn . . . . . *Hatfield*



McCuller, Becky . . . . . *Nashville*  
 McKinney, Joy Dell . . . . . *Norman*  
 Neel, Jerry Wayne . . . . . *Arkadelphia*



Nelson, Ralph . . . . . *Texarkana*  
 O'Quinn, Jim . . . . . *El Monte, Calif.*  
 Overton, Helen . . . . . *Bentonville*

# THE 1952 FRESHMAN CLASS

Partain, Laura Lee . . . . . *Arkadelphia*

Perry, Carole Sue . . . . . *Ft Smith*

Phillips, Anna Sue . . . . . *Searcy*



Phillips, Morgan . . . . . *Ft. Smith*

Pickard, Frankie . . . . . *Cabot*

Powers, Edward . . . . . *Harrison*



Presswood, Kenneth . . . . . *Leesville, La.*

Pugsley, Jerry . . . . . *West Helena*

Reynolds, Alfred . . . . . *Ouachita*



Rogers, Dean . . . . . *Camden*

Sadler, Helen . . . . . *Bauxite*

Royal, Jim . . . . . *Lewisville*



Seward, Jean . . . . . *Arkadelphia*

Shankle, Jimmy . . . . . *Chidester*

Sims, Robert . . . . . *West Helena*



Sims, Dennis . . . . . *Camden*

Smith, Edward . . . . . *DeQueen*

Smith, Elizabeth . . . . . *Norphlet*



# THE 1952 FRESHMAN CLASS



Smith, Faber . . . . . *Dumas*

Smith, Morris . . . . . *Little Rock*

Squires, Calvin . . . . . *Little Rock*



Steed, Margaret . . . . . *Pine Bluff*

Steely, Louis Len . . . . . *Arkadelphia*

St. John, Jerry . . . . . *Warren*



Stratton, Jerry . . . . . *Harrison*

Taylor, Carrie Ann . . . . . *White's City, N. M.*

Tillman, Jim . . . . . *Pine Bluff*



Tinsley, Peggy . . . . . *Clarksville*

Vaught, Jo Ann . . . . . *Mena*

Waldrum, Jessie Faye . . . . . *Talco, Tex.*



Ward, Elder . . . . . *El Dorado*

Ward, Neva Jo . . . . . *Nashville*

Ware, Gaihel . . . . . *Corpus Christi, Tex.*



Warren, Nancy . . . . . *Beebe*

Watkins, Lamar . . . . . *Columbia, Tenn.*

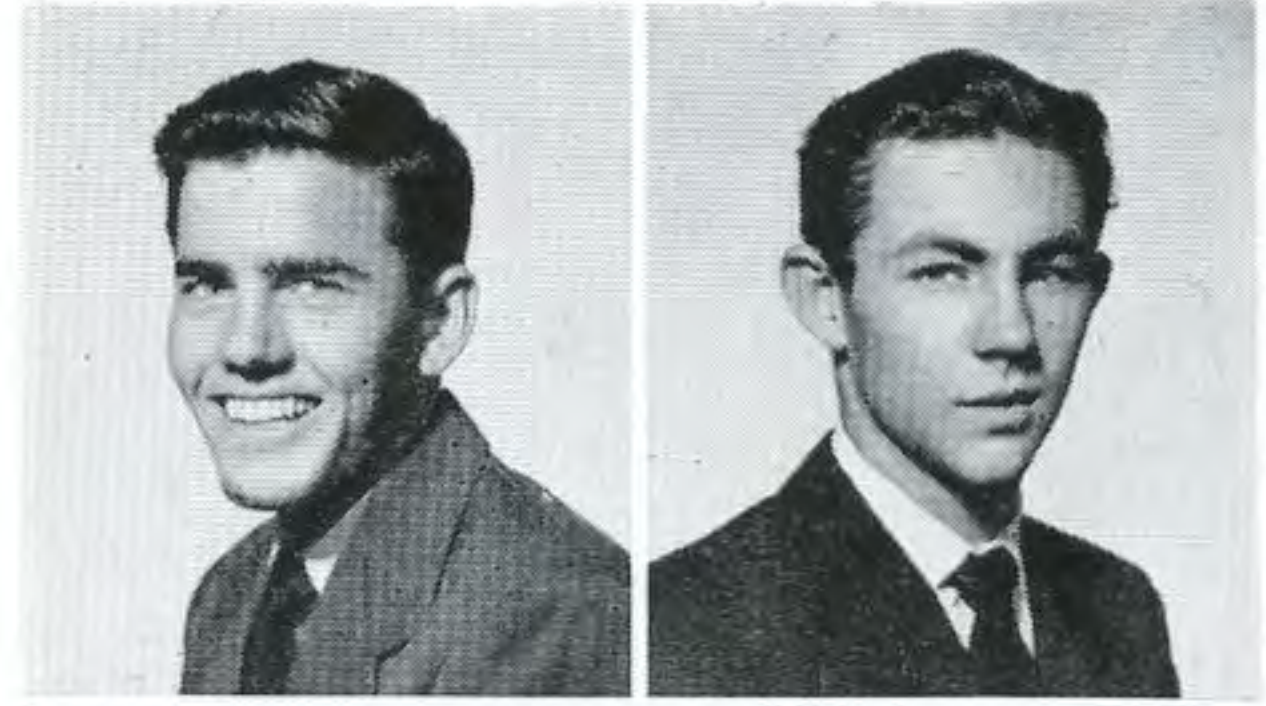
Weaver, Jackie . . . . . *Prescott*



# THE 1952 FRESHMAN CLASS

White, Harold . . . . . *Arkadelphia*

Whitten, James . . . . . *Marianna*



Williams, J. C. . . . . *Malvern*

Winfield, Harry . . . . . *Bearden*



Wood, Harrell . . . . . *Paragould*

Colyar, Oren . . . . . *Camden*

