

Ouachita Baptist University

## Scholarly Commons @ Ouachita

---

Ouachita!

Ouachita Alumni

---

11-1-1982

### November 1982

Alumni Newsletter

*Ouachita Baptist University*

Follow this and additional works at: <https://scholarlycommons.obu.edu/ouachita>

---

#### Recommended Citation

Newsletter, Alumni, "November 1982" (1982). *Ouachita!*. 25.

<https://scholarlycommons.obu.edu/ouachita/25>

This Book is brought to you for free and open access by the Ouachita Alumni at Scholarly Commons @ Ouachita. It has been accepted for inclusion in Ouachita! by an authorized administrator of Scholarly Commons @ Ouachita. For more information, please contact [mortensona@obu.edu](mailto:mortensona@obu.edu).

# OUACHITA!

OUACHITA BAPTIST UNIVERSITY • ARKADELPHIA, AR • NOVEMBER 1982



*YEAH, TIGERS! — Ellen, daughter of Richard and Bennie Carol Wade ('75), was caught up in the Tiger spirit when she attended Youth Choir Day with her parents from Monticello.*

## Phone-A-Thon to seek pledges from all alumni

Thirty-two teams of alumni, faculty, staff, administrators and students will participate in a massive Phone-A-Thon beginning January 17, 1983, as a part of the national alumni campaign to seek contributions from all 11,615 alumni and former students during the Ouachita at 100 Centennial Advancement Campaign.

"It's the first time we've tried this," said Carol Roper, the OBU development officer directing the project. The telephone center is to be set up in the new health, physical education and recreation (HPER) complex and will consist of 10 in-state lines, five more for a six-state region, and an additional five national hook-ups, all color coded.

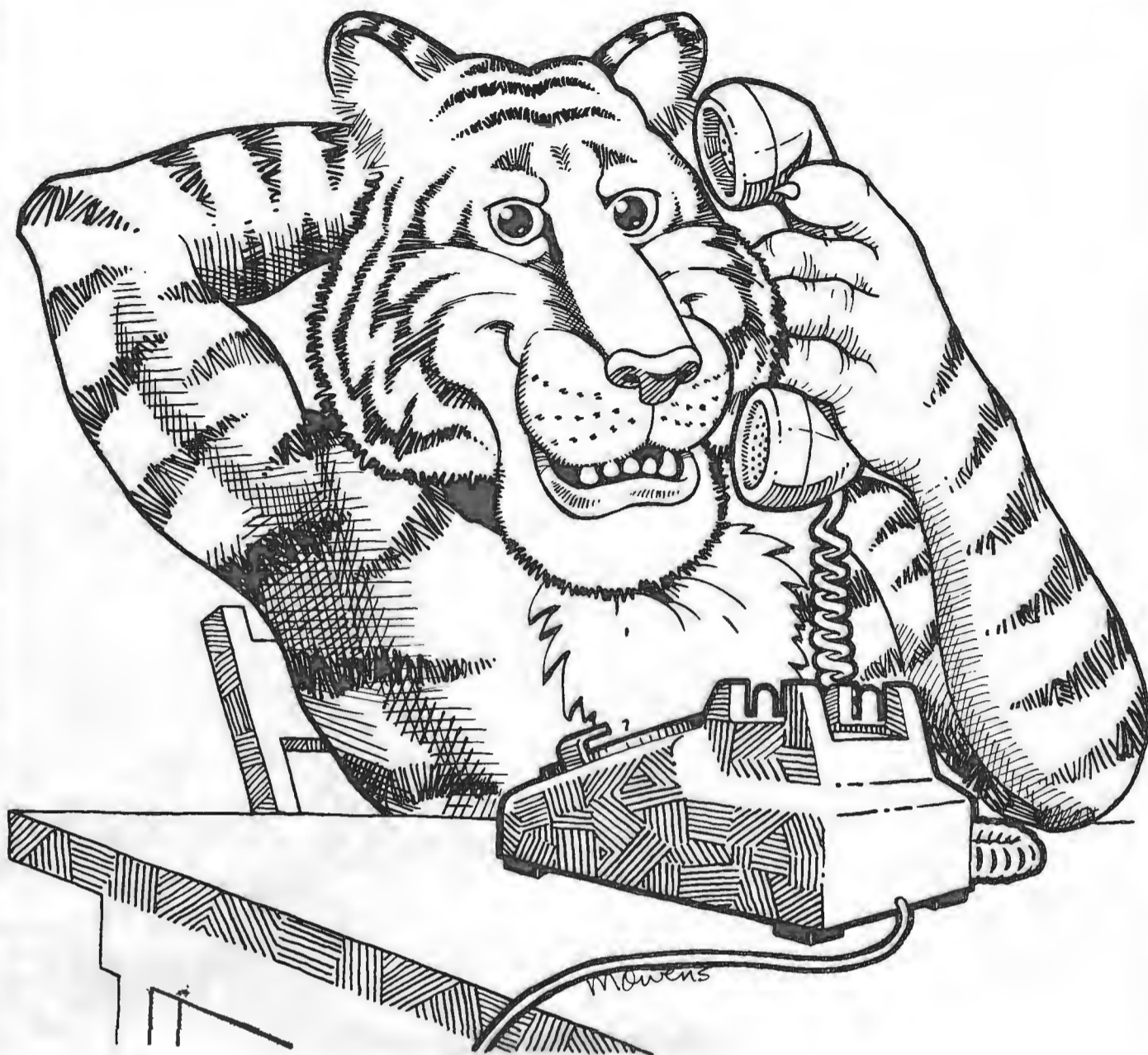
The 32 teams each with 10 members, include four from the alumni, four from the faculty, two from the staff, two from the administration and 20 from the students. Carol said prizes will be awarded to the top three teams, to the person receiving the largest individual pledge and to both the students and adults getting the highest total amount of money and the greatest number of pledges.

The national alumni campaign, which will be launched officially during Homecoming on November 13, is seeking a base goal of \$750,000 and a challenge goal of \$1,250,000. As this issue of "Ouachita!" was going to press, 69 alumni have already contributed more than \$545,449.

Dr. J. D. Patterson, '47, of Searcy, is serving as chairman of the alumni campaign. Co-chairmen are Beth Gladden Coulson, '75, of Little Rock; Carolyn Southerland Shell, '58, of Clinton; and William E. Mowrey, '40, of Little Rock.

Fess Parker, known to millions of movie-goers and television viewers for his portrayals of Davy Crockett and Daniel Boone, is national chairman of all phases of the Ouachita at 100 program.

Overall campaign goals include \$4 million for the new health, physical education and recreation complex now nearing completion, \$4 million for a new auditorium with seating for 2,000 and \$500,000 for increasing annual operating support.



The official 'Phone-A-Thon' tiger.

## Ouachita's Jim Berryman leads Civitan International

by Dr. William D. Downs, Jr.

Dr. Jim "Bear" Berryman, professor of religion and philosophy at Ouachita and president of Civitan International, is one of the fortunate few who have found exactly what they want to do in life and do it superbly well.

Jim joined the faculty in 1964 out of a "sense of calling" and has been at OBU ever since. "I believe that I have been given what I need to do the job at Ouachita," he said recently, "and I also feel a sense of responsibility for helping others."

A popular but intellectually demanding professor who is often called "Dr. B" by his admiring students, Jim combines formidable scholarship with a rollicking sense of humor to lecture on such subjects as Christian ethics, the philosophy of religion, world religions, the Old and New Testaments from historical and literary standpoints, contemporary thinking (such as analyzing the plays of Neil Simon) and studies of contemporary efforts to communicate ideas.

In addition, he is director of summer school, chairman of the department of philosophy, director of Ouachita's general education program and serves as commencement marshal.

And that's only what he does at Ouachita.

He is also a respected community leader in Arkadelphia, a city of slightly more than 10,000. With two college campuses, a thriving industrial development program and "a sense of its heritage," said Jim, Arkadelphia emerges as much more cosmopolitan and more aware of what is going on in the world than most other cities of its size anywhere in the country.

Perhaps his most important civic accomplishment was in the festival of the Two Rivers which will go on all night and



THE BEAR — Big Jim Berryman, the commencement marshal who can handle Ouachita's heavy mace, has OBU President, Dr. Daniel Grant, looking up to him as they discuss the baccalaureate procession.

entertainment event inspired in 1973 by a similar program in St. Charles, Mo., co-sponsored by the local Civitan Club.

There's more.

He has been chairman of the Central Arkansas Development Council dealing with poverty problems in a five-county area and has served on the board of directors of the Arkansas Housing Assistance Council, the Arkansas Housing Development Corporation and Community Enterprises, Inc., all attacking problems relating to low-income families.

Incredibly, he never misses a stitch, leaving whatever he has worked with in much better shape than it was before he started.

How does he do it?

"I have a lot of good people to work with," he said. "Also, I receive good sup-

port from my family. Too, Ouachita is the type of institution that encourages community involvement." But at the core of Jim's dedication to volunteer service is a commitment that grew from a childhood plagued by severe health problems.

"When I was 14," he said, "I had what you would have to call 'a profound experience.' It looked for a while as though I wasn't going to make it but when I did, I felt this strong sense of obligation to do the will of God which involved helping people. Most of what I have been involved in has come out of that."

Jim was born and raised in Russellville, Ark., a city pioneered by his great-grandfather. He graduated from Ouachita in 1957 and earned his bachelor of divinity (1960) and his doctor of theology (1964)

degrees from Southwestern Baptist Seminary in Fort Worth. It was there that he also met his wife, Mary Ann, who was studying religious education with plans to work in church architecture and interior decorating with the Sunday School Board at the Southern Baptist Convention in Nashville, Tenn.

Married in 1961, Jim and Mary have two children — Andy, a disc jockey and a 6'3", 225-pound football freshman at Ouachita this fall, and Cathy, an eleventh grade student at Arkadelphia High School where "she's active in everything," plays in the band and has won top awards in algebra and English. Mary Ann is a first grade teacher, is Children's Division Director at First Baptist Church, a member of AAUW and supports her husband and children in all their activities.

And one of Arkadelphia's happiest social occasions is the New Year's Day breakfast hosted annually by the Berrymans since 1965 "as a way of expressing gratitude to our friends and wishing them well."

Although all four members of the Berryman family lead extremely active lives, they love to travel together. Civitan recently has provided them trips to Atlanta, Ga., Montreal, Quebec, and this September to Scandinavia for Jim and Mary Ann.

So far as Civitan is concerned, Jim's road to the presidency began in 1961 when he joined the South Fort Worth club. When he moved to Arkadelphia in 1964 and found that there was no Civitan Club, he characteristically organized one and served as its president in 1969-70. Following that, he was lieutenant governor of the Ozark District in 1970-73, governor-elect in 1972-73, governor in 1973-74 and ran un-

See BERRYMAN, page 4





## PRESIDENT'S CORNER OBU alumni 'everywhere'

By Jamie Dale  
FSA President

One Sunday morning as I sat in the choir loft at the First Baptist Church of Benton, I idly looked across the congregation. It suddenly occurred to me that I was seeing Ouachita alumni everywhere — ushering, singing in the choir, passing the collection plates, handing out deacon assignments. I hope my dear pastor will forgive me, but I grabbed a pencil and started jotting names on a bulletin.

Are you interested? To name a few: Margaret and James Hertzfeld, Alice Ann and Bill Simmons, Sandra and Lib Carlisle, Becky and Skeet Brosius, Anna and Dick Phelan, Glenda Kraft Guerra, Helen and Ken Hughes, Jimmy Powers, Preston Cooper, Stephanie Simmons Conrad, Alice and Paul Hogue, Sue O'Neal Steele, Don Byrum, Cherry Winburn Wright, Brenda Wimmer, John D. Wright, Ken Cook, Carol and Mark Fikes, Clair Reece Gladden, Sarabelle Leech, Tommie and Bernes Selph, Betty and Stuart Fikes, Marie Smithers, Betsy Murcheson Bowers, Becky Lambert Ballard, Maurice Robinson, Debbie and Randy Jones, Bob Bonds, Lisa

Landers, Bendette Johnson Maxwell, Florence Dawley Ryburn, Laverne Clark, Austin and Eleanor Fikes, Betty Baldwin Berry, and Joe Martindale. (If you knew some of these at Ouachita, you are probably surprised that they are in church!)

Without exception, each person has made a unique contribution to the business world, the community, and to the church. This number is multiplied many times in many places on any Sunday morning.

There is a lot of talk these days about the Ouachita at 100 Campaign. On Homecoming Day, November 13th, nine reunion groups, all of the chairmen and captains, and many more will attend an Alumni Campaign Kickoff Luncheon. This should be one of the best days that Ouachita has had in a long time.

If you are still reading this, you may be wondering just what the alumni at Benton have to do with the big day at Ouachita. Everything! These people represent Ouachita and all it stands for. I feel a glow of pride . . .



**IN OPERATION** — The first project of the Ouachita Centennial Advancement program, the HPER (Health, Physical Education & Recreation) Building, is ready for this year's basketball season. The entire complex, including swimming pool, double gym, racquetball courts, gymnastics and weight rooms, new dressing rooms, offices, etc., is scheduled for completion by January 1, 1983.



**CHRONIC AILMENT** — The Ouachita Tiger, whether constructed of marble or velour, seems to have trouble hanging on to his tail. Cheerleader Paula Holland helps Lisa Morton regroup for the remainder of the ball game.

## GLANCES

### FSA Board

Two new members of the Advisory Board of the Former Students Association have been appointed by the Executive Committee to replace two elected members who have moved from their districts of representation.

Mrs. Pete Musgrave, the former Helen Gennings ('71) of Batesville, will fill the unexpired term of North Central Arkansas advisor, Harold Algee, formerly of Greenland, who has moved to Gould.

Woodrow Harrelson ('35) of Jonesboro will fill the three year term of newly elected Rev. James Guthrie who moved from Harrisburg, in the Northeastern Arkansas district to West Helena.

The FSA Constitution specified that the Executive Committee, composed of president, vice president, recording secretary, and the two Arkadelphia representatives fill vacancies on the board.

### \$250,000 grant awarded by Kresge

Ouachita has been awarded a challenge grant of \$250,000 by the Kresge Foundation of Troy, Mich., toward the construction of the new \$4 million health, physical education and recreation complex now under construction.

"This vote of confidence from the Kresge Foundation is most encouraging and is deeply appreciated. It will be their third grant to Ouachita in the past 10 years," said university president Dr. Daniel R. Grant.

Fulfillment of the grant is provisional, subject to Ouachita's securing the entire \$4 million construction cost in cash or pledges by December 15, 1982.

"This generous challenge grant from the Kresge Foundation should provide the impetus needed to raise the remaining \$1 million by the December 15 deadline," said Roger Harrod, vice president for development at OBU.

The Kresge Foundation was created by the personal gifts of Sebastian S. Kresge. Foundation grants are made to institutions in the areas of higher education, health care and related services, the arts and humanities, social services, science, conservation and religion.

The Ouachita challenge grant was among commitments totaling \$28,260,000 offered to 132 charitable organizations in 32 states and the District of Columbia in 1982 by the Kresge Foundation, chosen from a total of 1,449 proposals.

### 'Arkadelphia 2000'

"Arkadelphia 2000 A.D.," a project of the Joint Educational Consortium of Ouachita, Henderson and the Ross Foundation, has given the community an opportunity for long range planning for Arkadelphia's future.

The JEC, under the leadership of Executive Director Dr. Dolphus Whitten, held a series of four town meetings that were held last spring in the Clark County Court House.

Local residents and business people, including faculty members from both universities, were utilized in producing background papers, interpreting the findings and charting possible future development.

The topics presented were "The People," "The Land and its Resources," "Economic Development," "Educational and Cultural Development" and "Human Services." Six committees, involving interested citizens who responded to the presentations, have met to broaden community participation. They have considered cultural, recreational and beautification concerns; Economic Development; Educational Concerns; Governmental Services; Health and Human Services; and Youth Concerns.

The results of the studies have been recorded in the local papers, are on file, and will serve as resource and guides to leaders responsible for Arkadelphia's future.

### \$1 million goal set for Little Rock area

A goal of \$1 million was approved October 12 by more than 100 community and business leaders for the Little Rock Area phase of the Ouachita multi-million dollar Centennial Advancement Program.

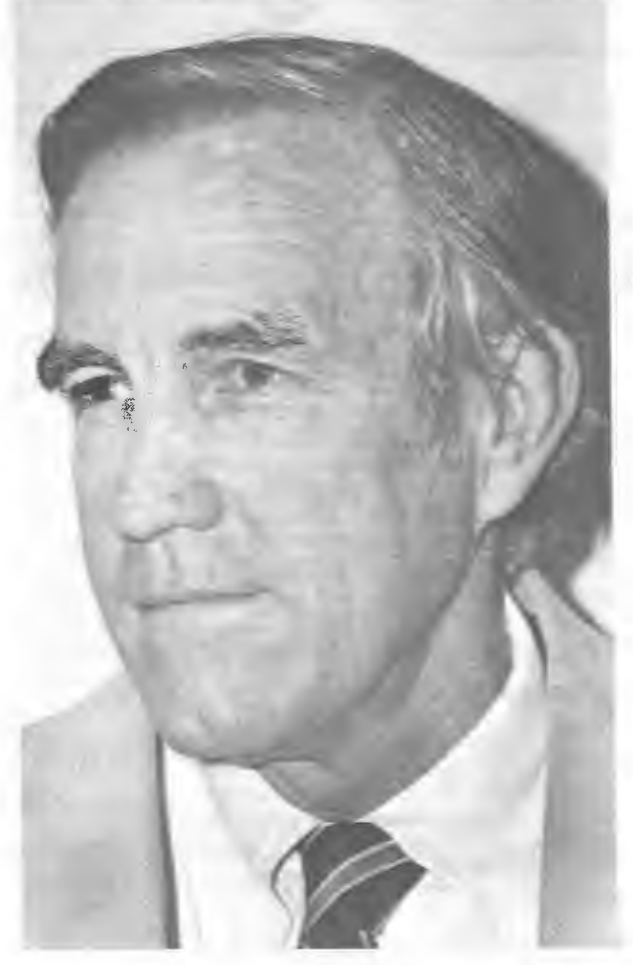
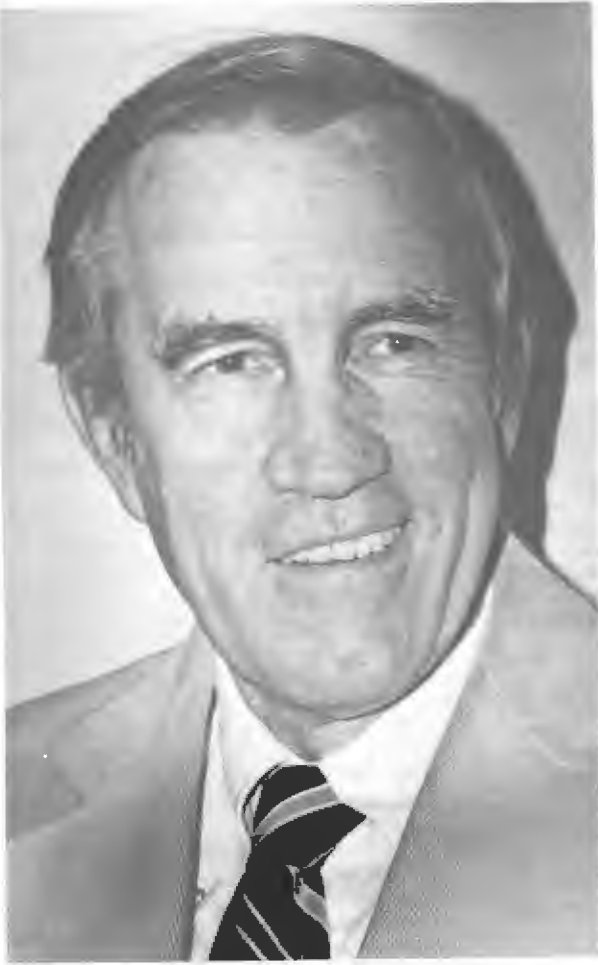
The campaign received a strong boost recently with challenge grants from the Mabree Foundation of \$500,000 and from the Kresge Foundation of \$250,000. The Little Rock effort will help to claim these grants.

Serving as chairman with the campaign will be Harry Erwin, a senior partner and certified public accountant with Arthur Young & Company.

Co-chairmen of the Initial Gifts Division will be Joe Ford, president of Allied Telephone Co., and Jim Gattis, vice president of Systematics, Inc. Don Holbert, a Ouachita graduate and chairman of the board of Central Flying Service, will serve as chairman of the Major Gifts Division.



**GOOD GRIEF!** — The look of horror on the face of assistant football coach David Sharp is short-lived. Whatever the Tigers were doing wrong or the other team was doing right, it's mostly been smiles at Ouachita this season as the Tigers have been setting the pace in the AIC.



## 'Caring, sharing, rigorous, demanding'

Dr. Thomas Turner talks about his job as Ouachita's new academic dean.

Dr. Thomas J. Turner, Ouachita's new vice president for academic affairs and dean of the School of Arts and Sciences, was interviewed recently by Dr. William D. Downs, Jr., director of public relations.

**Downs:** You arrived at Ouachita with the reputation of being a hard-nosed academic taskmaster who is also an outstanding Christian layman. How do you reconcile these two personality traits as a leader in Christian higher education?

**Turner:** I'm not sure I like the "hard-nosed academic taskmaster" reference! The keys, I think, are that we must be caring and sharing and at the same time be both rigorous and demanding. In other words, we can't love our students without making demands on them. If there is no discipline, there is no love and loving is primarily what the Christian faith is about. In a place like this, the Lord is in us. He uses us as instruments to transmit a spirit of concern.

**Downs:** How do you propose to do this?

**Turner:** Generally speaking, by improving academic excellence. I don't propose that our teachers work any harder but that we work "smarter" by planning carefully on what we're doing, by agreeing on common goals and by taking seriously the admonition of the Lord, "Whatever you do in word and deed, do it in the name of the Lord."

**Downs:** That sounds good but what does it actually mean?

**Turner:** It means we must do the best job we can do in the classroom. Again, by planning, agreeing on goals we want to work toward, and by placing the authority of doing more planning, development, recruiting and administration at the level of department chairmen. At most institutions of this type, departments don't really meet together on a regular basis to reinforce and to correct. Instead, we slip into ways of saying, "I'll talk to what's-his-face in the hall the next time I see him." As a result, not very much is accomplished.

**Downs:** What about the curriculum? Do you foresee any changes there?

**Turner:** Not really. But we may want to

consider modifying it without losing its essence, while at the same time keeping its values. We will tighten it up and we may even have to repackage it for students in order to make certain that what we offer is timely.

**Downs:** What other methods of faculty improvement are you thinking about?

### 'The good teacher is the enthusiastic teacher who throws away all of his or her yellowed, out-of-date notes and makes fresh starts.'

**Turner:** We must ask for more accountability from the faculty. This can be accomplished in at least two ways. First, by "self-evaluation," examining what we're doing in three primary areas: (1) teaching, (2) research and creative activity and (3) service on committees, in the community, civic clubs, that sort of thing.

I'm interested in faculty members staying alive and transmitting their enthusiasm to students. The good teacher is the enthusiastic teacher who throws away all of his or her yellowed, out-of-date notes and makes fresh starts. Second, a part of the evaluation process will involve department chairmen reacting to the self-evaluation of the faculty members in their departments. It is a way for both parties to see where the other is coming from, so to speak, and I think this can be very helpful.

**Downs:** In previous conversations with you, I've gotten the very strong impression that you are anxious for Ouachita to move into the information age. What about it?

**Turner:** You heard correctly. There are three primarily important ways I can see our using computers to get us into this "information age" you've referred to. The first is "straight computer-assisted instruction" in which a student sits at a terminal

that asks problems in, say, physics, and the student provides the answers. If the student is wrong, the computer doesn't become impatient but keeps on asking until the correct answer is given. That is what's happening in many colleges today. The computer can also, of course, do work for us, such as solving certain equations of analyzing data but we must be careful that we do not think

the three. However, I can't separate teaching from research and creative activity and service. Certainly, we're not a large research university and we have no aspirations to become one. But at the same time, we have to have faculty members ready to serve and to create an atmosphere for teaching. I believe that what I'm trying to say is that all three of these factors are parts of the fabric of academic excellence. One cannot be separated from the other two.

**Downs:** On a personal note, now that you have been here for a few months, what do you think?

**Turner:** Arkansas is a whole new world. There is an openness and warmth here that intrigues me and makes me comfortable.

**Downs:** How would you describe yourself? Who are you?

**Turner:** It's interesting that you would ask me that question because it's the same thing I ask many of the students who come to see me. I've been touched by the Lord and I'm still changing. So really, I'm not this, or this or this. I'm a child of God. I have love and joy and peace. And I also have grief. But day by day, I'm trusting Him to guide me, just as if I were a child being led by a parent.

**Downs:** Last question. Do faculty members in a school such as Ouachita really have any different parts to play in students' lives than those in state-supported institutions?

**Turner:** I certainly think they do. We have a truly heavy responsibility. We can't live in isolation. Faculty members often do not realize how they function as role models for students. Every one of us has the capability of actually changing lives and that, in today's vernacular, is "heavy." We need to face the fact that we can't do it alone. The Lord must work in us in order for us to speak the truth. Otherwise, everything that we do or say is alloyed with self-interest. We need to continually demonstrate for our students a synthesis between both faith and reason as we strive for both academic and Christian excellence. I have a strong sense that our Lord has even better days ahead for OBU as we work together to that end.

of the computer simply as a high-speed calculator. We must learn how the computer can help us in all areas by manipulating various symbols. Finally, there must also be straight instruction in computer programming, on how to use the computer and on developing new ideas in computer sciences. We could teach not only our own teachers how to use computers, but public school teachers in the surrounding area as well.

**Downs:** Why do you consider computer science to be so important?

**Turner:** Because this is what it's like in the real world. Our society is moving so quickly from the industrial age to the information age, it makes your head swim. We must be ready for it because, quite frankly, you either change or you die. And I can't think of a single discipline that in one way or another can't benefit from computers.

**Downs:** Earlier, you referred to the three primary areas of "teaching, research and creative activity and service." But you mentioned teaching as being our primary concern. Would you elaborate on this point?

**Turner:** I think you have to say that teaching is indeed the most important of



# GLANCES

## Dr. Grant selected for Truman panel

Dr. Daniel R. Grant, president of Ouachita, has recently received two national recognitions, in being selected to serve as a Regional Review Panelist Harry S. Truman Scholarship Foundation, and in the publication of the fourth edition of his book, "State and Local Government in America."

The Truman Scholarship Foundation, based in Washington, D.C., is a permanent program established to Congress to provide opportunities for outstanding students to prepare for careers in public service, providing up to \$5,000 annually for two years of undergraduate college classes and two years of graduate study.

## Three faculty members receive doctorates

Three faculty members, Mr. Mike Arrington, Mrs. Jill McMillan and Mrs. Kathy Martindale Burns, have recently completed all requirements for the doctor of philosophy degree, in history, speech communication and speech pathology respectively.

## Ouachitonian yearbook named All American

by Tim Wooldridge

The 1982 "Ouachitonian" yearbook has been awarded the All American rating from the Associated Collegiate Press at the

University of Minnesota.

The honor rating is awarded to year-books which achieve a First Class rating in points and have received at least four of the five Marks of Distinction in the fields of photography, copy, display, coverage and concept. The "Ouachitonian" received Marks of Distinction in every category.

## Bullingtons appointed missionaries-in-residence

by Mac Sisson

Dr. Bill L. Bullington and his wife, Evelyn, of Accra, Ghana, have been appointed as Ouachita's Missionaries-in-Residence for the 1982-83 academic year.

Bullington now serves as a Southern Baptist Convention (SBC) field representative for west Africa. The Bullingtons previously served as the Missionaries-in-Residence at OBU during the 1978-79 academic year.

## RAPS program designed for church youth service

The Ouachita Religious Activities Placement Service (RAPS) is a program of the Baptist Student Union designed to help students find part-time employment with churches in need of special youth services.

Don Blackmore, a senior from Foreman and co-chairman of RAPS, explains, "If a church needs leadership for a youth revival, or entertainment for a sweetheart banquet, we can send them names of individuals or groups with their respective talents."



**WOTTA MESS!** — Ouachita students work off all known frustrations and hostilities in a recent "Monday Night Madness" on the pedestrian bridge. Pictured are some of OBU's "Cream of the Crop" (shaving, that is).



**TIGER TUNES** — The BSU chose a giant, animated Monopoly game as their theme for this year's Tiger Tunes entry. It received Saturday night's costume award, but Kappa Chi, new men's social club, was the overall winner with their first participation in the two-day event.

## What the FSA has been up to all year

FSA ANNUAL REPORT  
May, 1981-82

### PUBLICATIONS:

"Ouachita" Alumni Bulletin - August, December, March "What's Up?" - FSA Calendar

### MAILINGS:

FSA ballot: Reunion letters and class rolls for five-year reunions; Daily address search and corrections; Addition of Class of '81 and former students; Assist campus clubs and other interest groups and departments to establish permanent alumni rolls

### GET-TOGETHERS:

1981 Commencement - Gold Tiger Reunion, Continental breakfast, FSA Luncheon, Commencement Tea; Southern Baptist Convention Get-Together - Los Angeles; Arkansas Baptist State Convention Fellowship - First Baptist Church, Fayetteville, Ark.; Homecoming - Reunion Dinner, Alumni Buffet, reunion bloc seating, After-game Suppers for '36, '42, '46, '52, '56, '62, '66, '66 Football Team, '72, '77, Town Kids Coffee

### HONORS:

Purple & Gold Heart Award - H. E. "Pete" Raines, Oct. Trustee meeting; Mrs. Jan Benson, Mrs. Donna Sisson, Mrs. Ann Vining, at Homecoming; Continual building of biographical files; Provide miniature diplomas in lucite frames for seniors.

### PROJECTS AND COMMITTEES:

Ouachita Tours, Dr. Cecil Sutley, Director; OBU Career Development & Placement Committee; Nominating Committee - Mel Thrash, Chm.; Distinguished Alumnus Committee - Mrs. Jamie Dale, Chm.; Senior Luncheon - Mel Thrash, Chm., January 27 "You Have Money in the Bank . . . Account for Yourself," - Mrs. Judy Philliber Kent and Joey Williams, speakers; Fall and Mid-Winter Board meetings; FSA Board sponsored trike team for Tiger Traks; Helped prepare Data Processing code book for FSA record computerization; Compiling class reunion scrapbooks

### PLACEMENT:

Assemble credentials for students and former students who file; Supply credentials to employers on request; Schedule recruiting visits; Placement Bulletin - on campus and mailed; Placement packet for seniors; Provide daily job opening notices for appropriate departments; Relay career development materials and resource suggestions to academic departments and Riley Library Career Corner; Counsel students

### PROFESSIONAL TRIPS AND MEETINGS:

Arkansas Assn. Placement Personnel, Russellville, April 30

### INTER-OFFICE COOPERATION

Supervise university graphotype, addressograph, folding and sealing machines; Address most and sort all university bulk mailing; assist Signal mailing; Maintain alumni and former student addresses and plates, Friends, Business Office, News Bureau, Music, and Tiger Traks plates; Provide class, area, and special interest lists for Development Office; Maintain Parents list; File university slides and publication photographs for accessibility and reuse; Assisted Ouachita Student Foundation "Dinners for Twenty" and "Shadowing" programs

### FSA BOARD OF ADVISORS

President:  
Mrs. Jamie Blackmon Dale  
Vice President:  
Mel Thrash  
Recording Secretary:  
Mrs. Virginia Gibson King  
Corres. Sec.-Treas.:  
Mrs. Agnes Crow Coppenger, non-voting  
Life Member:  
Frances Crawford

### ARKANSAS:

Northwest:  
Elizabeth Taylor, '83  
North Central:  
Harold Algee, '83  
Northeast:  
Rev. James E. Guthrie, '85  
West Central:  
Dr. John Wikman, '84  
Central:  
Andrew Greene, '85  
East Central:  
Jim Massey, '85  
Arkadelphia:  
Mrs. Sarah Hardage York, '84  
Billy C. Williams, '84  
Southwest:  
Mrs. Ann Shackelford Andrus, '83  
Southeast:  
Mrs. Elizabeth Seale Peterson, '85

### OUT-OF-STATE:

Northwest:  
Rev. Danny H. Coker, '85  
North Central:  
Mrs. Sally Guthrie Dolby, '85  
Northeast:  
Kelvin Story, '85  
West Central:  
Mrs. Suzanne Ketzscher Angliss, '83  
Central:  
H. Zahle Elms, '83  
East Central:  
Dr. G. Daniel Gaske, '85  
Southwest:  
Mrs. Carol Miller Porter, '83  
Dewey Stark, '83  
South Central:  
Dr. Jack Yeager, '83  
Southeast:  
Dr. J. Leland Hall, '83

### RETIRING MEMBERS:

Rec. Secretary:  
Mrs. Martha Moseley McHaney  
E. Central, AR:  
Dr. J. D. Patterson  
Central, AR:  
John Heflin  
Southeast, AR:  
Mrs. Vicky Brown Shults  
Northeast, AR:  
Cheryl Jenkins  
Northwest, US:  
James E. Shaw  
N. Central, US:  
Mrs. Opal Crutchfield Cussons  
Northeast, US:  
Dr. Neil Mondy  
E. Central, US:  
Dr. Bruce Price

### STAFF:

Associate: Mrs. Eddie Danner (ret.); Mrs. Ed Seale (moved); Brenda Williams

### STUDENTS:

Students: Joe Garrett, Rosanne Gianetta, David McKinney, Becky Vercher, Cassandra Walker, Walter Washington

## Berryman travels the world

continued from page 1

successfully for international vice president in 1975.

Not one to be easily discouraged, Jim ran again in 1977 and was elected for Zone 8. He was named president-elect in New Orleans in 1981.

Asked why he had chosen to devote so much of his life to Civitan, Jim said there are "many benevolent things which people should do that are impossible to do by yourself so you start looking for groups that can do the job. In Civitan, I found a cross-section of people who want to do things that couldn't be done by other organizations."

Now that he holds the top office in Civitan, which he describes proudly as "the fastest-growing civic club in the world," Jim wants the organization to become even more international in its character "so that we think of global as well as community issues." He also wants clubs to be involved

in more meaningful projects and will seek to establish Civitan operations in countries where none exist such as Switzerland, Austria, Mexico and the Bahamas.

The new president will also be striving for "organizational renewal," which, he explained, means "putting some new wood on the fire, appealing to new generations, meeting new demands for service, keeping the good and throwing out the bad and replacing the bad with something new."

Obviously excited about the presidency which has generated huge waves of admiration and delight among his friends and associates in Arkadelphia and elsewhere, Jim sees the lofty post "as simply being a way to maximize whatever contributions I have to make to and through Civitan, to extend these contributions to others, most of whom I'll never see or have any personal contact with, but for whom I have a strong sense of responsibility."

# Contributions reach \$2,890,275.43 in 1981-82

CONTRIBUTORS TO OUACHITA BAPTIST UNIVERSITY  
June 1, 1981 - May 31, 1982

Gifts and grants coming to Ouachita Baptist University this year in the amount of \$2,890,275.43 exceeds last year's total by 27%. A large number of first-time investors joined with those who have established a pattern of support for the University to help make this so.

An encouraging sign is the increased size of the average gift. This higher level of dependable support will help insure that Ouachita will continue to provide a quality educational program.

Thank you for making this year even better than last, but most importantly, thank you for recognizing the importance of continuing support for Christian higher education.

Roger B. Harrod  
Vice President for Development

## A

Mr. and Mrs. H. L. Abbott  
COL and Mrs. William C. Abernathy  
Ace of Diamonds  
Mr. Charles E. Acuff  
Mrs. Douglas Adams  
Adams Pest Control of Searcy, Inc.  
Mr. and Mrs. Roy Adams  
Mr. and Mrs. Royal Adams  
Mr. and Mrs. Ruben Adams  
Mr. Gus Albright, Jr.  
Mr. and Mrs. Dale Albritton  
Alcoa Foundation  
Mr. E. J. Alexander  
Mrs. Syble Alexander  
Miss Betty Rea Allen  
Ms. Carolyn Allen  
Dr. and Mrs. D. B. Allen  
Mrs. Mattie Allen  
Mr. William Allen  
Mr. A. Reid Allison  
Mr. and Mrs. James Paul Allison  
Mr. and Mrs. Freeman W. Allred  
Alpha Iota Chapter of Delta Kappa Gamma Society  
Ambassador's Civic Social Club  
American Business Women's Association,  
Bluff City Chapter  
American Telephone & Telegraph Company  
America's Jr. Miss Scholarship Foundation  
Amoco Foundation, Inc.  
Mrs. Dowell H. Anders  
Mr. and Mrs. David G. Anderson  
Mr. Robert B. Anderson  
Mrs. Harold G. Andrews  
Anonymous  
Clarence & Bennie Sue Anthony  
ZLT Steve Argo  
Arkadelphia Sand & Gravel  
Arkadelphia, Second Baptist Church  
Arkansas Bank & Trust Company, Hot Springs  
Arkansas Baptist Foundation  
Arkansas Baptist State Convention  
Arkansas Foundation of Associated Colleges  
Arkansas Louisiana Gas Company  
Arkansas Power & Light Company  
Arkansas Pulpwood  
Armored Parent-Teachers Association  
Mr. Clare H. Armstrong, Jr.  
Dr. D. Wade Armstrong  
Mrs. Baxter W. Arnold  
Mr. and Mrs. Mike Arrington  
Mr. Harry Ashcraft  
Atkins, First Baptist Church  
Mr. Chuck Atkinson  
Mr. and Mrs. William K. Atkinson  
Mr. and Mrs. Millard Aud  
Aufderheide Flying Service, Inc.  
Dr. Thomas L. Auffenberg  
Austin's IGA Foodliner  
Auto Parts & Supply  
Mrs. Shelby Avery  
Mr. and Mrs. William F. Avery  
Avis Rent-A-Car

Rev. Jack Bledsoe  
Miss Judy Blevins  
Mr. and Mrs. T. O. Boatright  
Mrs. Connie Terry Bobo  
Dr. Lindy V. Bollen  
Mr. and Mrs. Jim Bolton  
Dr. Thomas Bolton  
Mr. Larry S. Bone  
Mr. and Mrs. Jerry P. Bookout  
Booneville, First Baptist Church  
Miss Evelyn Bowden  
Mr. and Mrs. James T. Bowden  
Mr. David O. Bowen  
Bowen Restaurants, Inc.  
Mr. and Mrs. Robert Bowers  
Mrs. Billie Bowie  
B.P.O.E., Mountain Home Lodge No. 1714  
Mr. Bill Braden  
Mrs. Earl J. Bradfield  
Mrs. Shirley Bradshaw  
Mr. James W. Brandon, Sr.  
Brandt, Inc.  
Mrs. Lee Ann Brannon  
Mrs. Edna M. Brantley  
Mr. Harvey Max Braswell  
Mr. and Mrs. Kenneth Bray  
Mr. Eric Ray Bremer  
Mrs. B. L. Bridges  
Mr. and Mrs. Booker Brim  
Mr. Mandel Brockinton  
Don Brown Coffee Service  
Mr. and Mrs. James D. Brown  
Dr. Jeania Brown  
Ms. Wanda L. Brown  
Mr. and Mrs. K. V. Browne  
Mr. and Mrs. David Earl Browning  
Mr. George Arthur Bruce  
Mr. and Mrs. W. H. Bruening  
Mr. Roy Buckelew  
Miss Elizabeth Buffalo  
Mr. William Buffalo  
Mrs. Billy George Buie  
Mrs. Ruth E. Bullock  
Mr. Kenny Bunch  
Mrs. Al Bunn  
Dr. and Mrs. Russell Burbank  
Mr. and Mrs. James Burleson  
Mrs. Martha Burleson  
Mrs. Della Burns  
Mr. Brian W. Burton  
Mrs. Candace M. Burton  
Dr. and Mrs. Glenn Burton  
Dr. Henry Burton  
Mr. William B. Burton  
Business Men's Assurance Company of America  
Business and Professional Women's Club of Pine Bluff  
Mr. and Mrs. William H. Byrd

## C

Mr. C. Louis Cabe  
Mr. Horace Cabe  
Rev. and Mrs. Carroll D. Caldwell  
Mrs. Chester Caldwell  
Mr. and Mrs. J. Wiley Caldwell  
Ms. Nell Caldwell  
Miss Shirley Callaway  
Calvary Baptist Church, Batesville  
Mr. and Mrs. Jeff Campbell  
Miss Carol Cannedy  
Dr. Don Carnahan  
Carolina Power & Light Company  
Mr. and Mrs. Jodie Michael Carroll  
Mrs. O. J. Carson  
Mrs. J. L. Carter  
Mrs. Ferrell D. Caster  
Miss Donna Catlett  
Mr. and Mrs. A. B. Catron  
Mrs. George Catton, Jr.  
Mr. Robert Cawthorn  
Central Baptist Church, Magnolia  
Central Baptist Church, Mineral Springs  
Central Baptist Church WMU, North Little Rock  
Dr. Charles Chambliss  
Mrs. Ronald Chandler  
Dr. and Mrs. Dewey Chapel  
Dr. and Mrs. Jerry C. Chapman  
Mr. Dwayne Chappell  
Mr. J. P. Cheatham, Sr.  
Dr. and Mrs. Philip A. Chenoweth  
Rev. and Mrs. Charles Chesser  
Mr. David Bruce Chism  
Mr. and Mrs. Jerry Christian  
Miss Sheila Christopher  
Mrs. Finley M. Chu  
Mr. and Mrs. Ronald Chunn  
Circle M. Plumbing Company  
Cities Service Foundation  
Citizens Bank & Trust, Carlisle  
Citizens First State Bank, Arkadelphia  
Citizens State Bank, Bald Knob  
City National Bank, Fort Smith  
Ms. Carrie D. Clark  
Clark County Lumber Company  
Mrs. Rebecca Clark  
Mr. and Mrs. Kenneth W. Clawson  
Mrs. Edna W. Clayton  
Mrs. James Clayton  
Mr. and Mrs. John M. Clem  
Miss Robbie Clifton  
Mrs. Ralph Cloar  
Helen Clore Estate  
Rev. W. L. Cloud, Sr.  
Miss Elma Cobb  
Mr. and Mrs. Frank Cochran, Jr.  
Miss Laura Jane Cochran  
Mr. and Mrs. Ralph Cochran  
Mrs. Frederick D. Cochran  
Mr. and Mrs. Kenneth Cofer  
Mr. Lavell Cole  
Mrs. W. F. Cole  
Mrs. Stanley F. Coley  
Carr P. Collins Foundation, Inc.  
Commercial National Bank, Little Rock  
Mr. Thomas H. Compere  
Mr. and Mrs. Jim Conard

Miss Catherine Condray  
Dr. Virgil H. Conner  
Mr. Charles Cook  
Dan Cook's, Inc.  
Miss Pam Cook  
Dr. and Mrs. William H. Cook  
Mr. Dixon Earl Cooley  
Cooper Construction Company  
Miss Nancy B. Cooper  
Mrs. Pauline Cooper  
Mr. Roy Cooper  
Dr. T. P. Copeland  
Dr. and Mrs. Raymond Coppenger  
Corporate Finance Associates  
Mrs. J. I. Cossey  
Mrs. J. G. Cothran  
Mr. and Mrs. Elmer R. Coulson  
Michael and Beth Gladden Coulson  
Dr. and Mrs. Ed Coulter  
Mrs. Evalyn Cowart  
Mr. and Mrs. E. E. Cowling  
Mr. Benny F. Cox  
Mr. Kevin Crass  
Miss Frances Crawford  
Mr. and Mrs. Lamar S. Crawford  
Miss Mary Alice Crawford  
Mr. Nolan Crawford  
Mr. and Mrs. John Crews  
Mr. John David Crisp, Sr.  
Mr. and Mrs. Jim Crittenden  
Mrs. Sarah Boland Crittenden  
Cross Development Company  
Mrs. Lessie H. Cross  
Miss Janet E. Crouch  
Mr. and Mrs. B. C. Crowell  
Mr. George K. Crump  
Mrs. James S. Crump  
Miss Kerri Culpepper  
Mr. Donald M. Cunningham  
Mrs. Nettie Cunningham  
Rev. and Mrs. Clarence Cutrell

## D

Mrs. Jamie Dale  
COL and Mrs. John R. Dale  
Miss Hiawatha Daniel  
Mr. John T. Daniel, Jr.  
Mrs. Ralph A. Daniel  
Mr. and Mrs. William H. Daniel  
Mr. Jim Dann  
Mr. and Mrs. Eddie Danner  
Mrs. Larry Darden  
Mr. George Daves  
Mrs. Blanche Byrom Davis  
Mrs. E. E. Davis  
COL Jim Davis  
Mr. and Mrs. D. D. Dawley, Sr.  
Mrs. Robert DeArmond  
Mr. and Mrs. Charles M. Deaver  
Rev. and Mrs. Wilson Deese  
DeLay Baptist Church, Arkadelphia  
Mr. and Mrs. G. W. DeLaughter  
Mr. and Mrs. Otis Denney  
DeQueen Lions Club  
Daniel B. Deupree Foundation  
Mr. Mark Dewbre  
Mr. and Mrs. Louie Dickinson  
Dick's 5 & 10, Inc.  
Mr. David Diemer  
Ms. Jo Ann Divine  
Mr. B. Aldon Dixon  
Dr. F. G. Dodson  
Dr. and Mrs. Ralph Douglas  
Dow Chemical Company  
Mr. D. Barton Dowdy  
Dr. W. D. Downs  
Mr. C. R. Draper  
Mr. and Mrs. J. D. Dryer  
Mrs. Eva H. Duggar  
Mrs. Bettie Duke  
Dumas, First Baptist Church  
Mr. and Mrs. Justin R. Duncan  
Miss Sandra Kay Dunn  
Mrs. Nat T. Dyer

## F

Farmers Hardware  
Mr. and Mrs. Jarrell Felton  
Felton Oil Co., Inc.

Mrs. Marilyn Maier Fincher  
Dr. and Mrs. Stephen Clark Fincher  
Mr. John C. Finley, III  
Firestone Tire & Rubber Co.  
First American National Bank, North Little Rock  
First Federal Savings of Hot Springs  
First National Bank, Searcy  
Dr. and Mrs. Paul Fitzgerald  
Mrs. Neno Flaig  
Ms. Gloria D. Ford  
Dr. Ralph Ford  
Fordyce Scholarship Association  
Mr. and Mrs. Charles E. Forman  
Fort Worth Womens Physical Education Association  
Mrs. Norma Foster  
Mr. and Mrs. Graham Fowler  
Mr. Michael Cody Fowler  
Ms. Minnie Francis  
Mr. Larry Franklin  
Mr. Joseph A. Franz  
Mr. and Mrs. Doyle Frazier  
Mr. Ernest Freshour  
Friday, Eldredge & Clark  
Mr. Jeff H. Frost  
Mr. Richard S. Fulford  
Mr. and Mrs. Travis Funderburk  
Mr. John W. Furquerson  
Future Homemakers of America, Arkansas High School

## G

Mrs. Ruth Payne Gant  
Gardenia Garden Club  
Mrs. C. B. Gardiner  
Mr. John F. Gardner, Jr.  
Miss Lois Gardner  
Mrs. Erwin W. Garner  
Mr. and Mrs. Randy Garner  
Dr. and Mrs. Theodore Garrison  
Dr. and Mrs. Dan Gaske  
General Electric Foundation  
General Farm Services, Inc.  
Georgia Pacific Foundation  
Geyer Springs First Baptist Church, Little Rock  
Gibson & Bearden  
Mrs. Mary E. Gifford  
Earl Gill Enterprises, Inc.  
COL and Mrs. Shelby L. Gillette  
Mr. and Mrs. Robert Gladden  
Mr. and Mrs. Mark Glover  
Mr. Elmer Goble  
Dr. Anne T. Goetsch  
Dr. Augustus J. Goforth, Jr.  
Mr. and Mrs. Smith D. Gooch  
Mr. Glenn E. Good  
Mr. and Mrs. Floyd H. Goodman  
Dr. Carl Goodson  
Mrs. Doris K. Goodwin  
Mr. Charles A. Gordon, Jr.  
Mrs. Mildred L. Gosnell  
Dr. and Mrs. Bob Gosser  
Gott's  
Dr. Ray Granade  
Dr. and Mrs. Daniel Grant  
Mr. and Mrs. J. Richard Grant  
Mr. and Mrs. Charles Graves  
Mrs. H. S. Graves  
Dr. Bob Gravett  
Mrs. Emma Gray  
Mr. and Mrs. Jack M. Gray  
Mr. Kerwin Gray  
Mrs. Marvin A. Green  
Miss Martha Greene  
Dr. Tom Greer  
Mr. and Mrs. Noel K. Gregory  
Mr. and Mrs. Howard Griffin  
Mrs. Thomas J. Gulley  
Mr. Louis B. Gustavus  
Mr. and Mrs. Philip N. Guyol

## H

Mr. Thomas C. Hagins  
Dr. Raouf Halaby  
Dr. and Mrs. J. R. Hale  
Dr. and Mrs. Andrew M. Hall  
Dr. and Mrs. J. Leland Hall  
Mrs. J. Vernon Hall  
Dr. John A. Hall  
Mr. and Mrs. John Carroll Hall  
Mr. and Mrs. O. Wendell Hall, Jr.  
Mr. and Mrs. Herbert Hamilton  
Mrs. Margaret R. Hamilton  
Mr. Charles Brent Hamlin  
Dr. Paul Hammond  
Mrs. M. M. Hamner  
Mr. and Mrs. Jeral L. Hampton  
Dr. and Mrs. James W. Hankins  
Mr. Terry Hankins  
Dr. and Mrs. H. E. Hanna  
Mrs. Ann Hansard  
Mrs. Davyne Hansen  
Dr. Don Harbuck, Jr.  
Miss Thelma Hardcastle  
Mr. and Mrs. Billy Bob Hardman  
Hardman Lumber Company  
Mr. and Mrs. John Hardwick  
Mr. Bernie S. Hargis, III  
Hargis Brothers, Inc.  
Mr. John R. Hargrove  
Mr. and Mrs. W. A. Harkrider  
Mr. Van Harness  
Miss Alberta Harrington  
Mr. Cliff Harris  
Mr. and Mrs. Floyd Harris  
Mr. James E. Harris  
Mrs. James E. Harris  
Mr. and Mrs. Roger B. Harrod  
Mr. and Mrs. Hershel O. Hartley  
Rev. and Mrs. Edgar Harvey  
Dr. and Mrs. Lawson Hatfield  
Mrs. Henry A. Hawkins  
Dr. James C. Hefley  
Mr. and Mrs. J. L. Heflin  
Mr. and Mrs. Johnny Heflin  
Helena, First Baptist Church  
Mrs. Robert Helms  
Dr. Paul T. Hendershot  
Mr. Chuck Henderson  
Mr. Pat Henderson  
Mr. and Mrs. Ronnie Lee Henderson  
Mr. W. J. Hendricks

Mr. and Mrs. Carl E. Hendrix, Jr.  
Mr. and Mrs. Paul Henry  
Dr. Wallace Herbert  
Dr. Elson Herndon  
Mr. R. Leon Herrin  
Mr. and Mrs. James Herzfeld  
Dr. and Mrs. Glenn E. Hickey  
Mrs. John D. Hicks  
Dr. and Mrs. W. Harold Hicks  
Mr. and Mrs. R. Voyt Hill  
Dr. Powell Hines  
Mrs. J. O. Hobgood  
Mr. Russell Hodges  
Mrs. Monroe G. Hoffman  
Dr. and Mrs. F. Paul Hogue  
Miss Fay Holiman  
Mrs. Mary Holiman  
Elvus Holloway Estate  
Mrs. Jerry Hollowell  
Dr. Charles S. Holt, Jr.  
Mr. Dennis Holt, Jr.  
Mr. David Honnell  
Rev. and Mrs. Don Hook  
Hope Business and Professional Women's Club  
GEN and Mrs. Edward J. Hopkins  
Horatio State Bank  
Miss Margrete E. Horne  
Mr. Wilford W. Horne  
Mr. and Mrs. Ed Horton, Sr.  
Mr. Edwin M. Horton  
Hot Springs Music Club  
Hot Springs, Second Baptist Church  
Mrs. Aubrey J. Hough, Jr.  
The Hourglass Exercise and Fitness Center  
House and Garden  
Mr. Billy R. Huddleston  
Miss Carmen Huddleston  
Hughes, First Baptist Church  
Mr. and Mrs. William F. Hughes  
Mr. C. R. Huie  
Mr. and Mrs. Millard Hullender  
Mr. Dee Human  
Mr. William Chris Humphreys  
Dr. and Mrs. L. L. Hunnicutt  
Dr. and Mrs. Thomas W. Hunt  
Mrs. Robert M. Hunter  
Mrs. O. R. Hurn

## I

Immanuel Baptist Church, Little Rock  
Ms. Brenda K. Ingram  
International Paper Company Foundation  
International Playtex, Inc.

## J

Mr. and Mrs. Louis M. Jacks  
Mrs. C. Ben Jackson  
Mr. and Mrs. Charles E. Jackson  
Rev. and Mrs. Gerald Jackson  
Mr. Sonny Jackson  
Jacksonville, First Baptist Church  
Mr. and Mrs. Charles W. James, Jr.  
Mr. and Mrs. John W. Jarrett, Jr.  
Mr. Ed L. Jarvis  
Jayroe Litho  
Mrs. Byrla W. Jean  
Dr. Joe Jeffers  
Miss Cheryl Jenkins  
Mr. and Mrs. Morley Jennings  
Dr. and Mrs. George C. Jernigan, Jr.  
Mrs. Clarence A. Johnson  
Mrs. Edwin L. Johnson  
Mrs. Jimmy L. Johnson  
Mr. and Mrs. R. B. Johnson  
Mr. and Mrs. Richard Johnson  
Mr. Roy L. Johnson  
Mr. and Mrs. Wayne L. Johnson  
Mr. Bobby G. Jones  
Mrs. Dorothy Jones  
Mr. Harold Jones  
Harvey and Bernice Jones Foundation  
Dr. Joel P. Jones  
Miss Kathryn Jones  
Mrs. George Jordan  
Dr. and Mrs. Stanley Jordan  
Joyce City Baptist Church, Smackover  
Mr. and Mrs. A. K. Junkin, Sr.

## K

Mr. Jimmy Karam  
Mr. L. M. Keeling, Jr.  
Mr. and Mrs. Joe Keeton  
Mr. Walter J. Kehoe  
Miss Helen Kelley  
RADM and Mrs. James W. Kelly  
Mr. Jonathan Kelly  
Mrs. Kenneth M. Kelly  
Mr. Ronald D. Kelly  
Mr. Austin Kerley  
Mrs. Jean Ketzsch  
Mr. and Mrs. David A. Killian  
Mrs. Faye Williams Kimbrell  
Mr. and Mrs. C. W. Kinard, Jr.  
Mrs. A. T. King  
Mr. and Mrs. Duane S. King  
Mr. and Mrs. Jacob L. King  
Mr. and Mrs. Larry E. Kircher  
Kiwanis Club of Hope  
Dr. Wesley Kluck  
Mr. and Mrs. Harvey Kneisel  
Mrs. Kathy Knight  
Kniseley, McCorkle, & Wilson, Timber  
Mr. Paul Kok  
Dr. and Mrs. W. Payton Kolb

## L

Mr. Robert G. Lace  
Lakeside Motel  
Mr. James W. Lane  
Mr. Louis Lanford  
Ms. Estelle B. Langley  
Mr. James W. Langley  
Mr. William L. Larson  
Mr. and Mrs. Robert W. Lassiter  
Miss Dawn Launius  
Dr. J. Larry Lawson  
Mrs. M. C. Leach  
Thomas and Dorothy Leavey Foundation  
Ms. June S. Lee  
Lee Memorial Baptist Church, Pine Bluff  
Mrs. Harold B. Leeton  
Mrs. Helen Leggett  
Levi Strauss Foundation  
Mrs. Eddith M. Lewis  
Mr. and Mrs. George Lewis  
Mrs. Lee Lewis  
Mr. R. A. Lile  
Mr. and Mrs. Bart R. Lindsey  
Mr. Lloyd E. Lindsey  
Mr. Dwight Linkous  
Mr. Rav Isemby  
Mr. William Wesley Lites  
Mr. and Mrs. Ralph Latzfelner  
Dr. and Mrs. Kenneth Locke  
CPI Michael David Locke  
Mrs. Beverly Fanning Lofton  
Mr. and Mrs. Truman M. Lollar  
Long Ford Company  
Mr. and Mrs. Pat W. Long  
Mr. and Mrs. J. Hugh Lookadoo, Jr.  
Mr. and Mrs. Jack M. Lowman  
Mrs. Jake W. Lowman  
Mr. and Mrs. Doyne Loyd  
Miss Mary Luck  
Mrs. John B. Luckie  
Ms. Nell Ford Luther  
MAJ GEN Lewis E. Lyle  
Mr. and Mrs. H. Terry Lynn  
Miss Helen Lyon

## Mc

Dr. Francis McBeth  
Mr. and Mrs. Lewis McCallum  
Mr. James D. McCargo  
Dr. Clark McCarty  
Mr. and Mrs. A. E. McCaskill  
Mrs. E. E. McCaskill  
Mr. and Mrs. Roy McClain  
McClain Welding Shop, Inc.  
Miss Anna L. McClanahan  
Mrs. Jim F. McClanahan  
Dr. John H. McClanahan  
Miss Rosalind Ruth McClanahan  
Mrs. Clarice McClard  
Mrs. Clara McClendon  
Mrs. Anne Vogel McClure  
Mr. and Mrs. Jim McCommas  
Mrs. L. O. McCracken  
McCrory Corporation  
Dr. James T. McDonald, Jr.  
McDonald's of Arkadelphia  
Mrs. Betty McGee  
Mr. and Mrs. Robert L. McGill  
Dr. and Mrs. L. J. McHaney  
Ms. Marie McIntosh  
Mr. and Mrs. Jack A. McKenzie  
Mrs. Linda McKinney  
Mrs. R. M. McKinney  
Mr. and Mrs. A. A. McLaughlin  
Mr. George E. McLeod  
Mr. Dougald McMillan, Jr.  
Mr. and Mrs. H. W. McMillan  
Ms. Susan T. McMillan  
Mr. and Mrs. Toney McMillan  
McMillan, Turner & McCorkle  
Dr. and Mrs. Earl McWherter

## M

Mr. Jack Mabray, Jr.  
Mr. John Trimble Mabray  
Mrs. G. B. Mabry  
Judge and Mrs. Edward S. Maddox  
Mrs. Wilma Maddox  
Mr. Roy C. Maddux  
Mrs. Joe L. Magdaleno  
Mr. John L. Maier, III  
Ms. Nancy Cooper Maier  
Malvern, First Baptist Church  
Mrs. Bill Mankin  
Mr. George A. Mann  
Mr. and Mrs. Boyd Margason  
Dr. Daniel C. Martin  
MAJ and Mrs. M. G. Martin  
Mr. and Mrs. Ray B. Martin  
Mr. and Mrs. W. E. Martin  
Dr. and Mrs. William C. Martin  
Rev. and Mrs. E. O. Martindale, Sr.  
Mr. Eric Stephen Marx  
Mary and Martha's  
Miss Cynthia Lynn Massey  
Mrs. Ronald Massey  
Mrs. W. L. May  
Mr. Robert L. Mayhan  
Miss Blanche Mays  
Mr. and Mrs. L. W. Meachum  
Mrs. John Carl Meador  
Mr. T. C. Meador, Sr.  
Medic-Aid Pharmacy  
Mrs. William M. Meeks, Jr.  
Mr. and Mrs. William M. Meeks, III  
Merchants and Planters Bank, Arkadelphia  
Mrs. T. V. Messer  
Mr. and Mrs. James J. Metcalf  
Mr. and Mrs. William F. Meyer  
Mr. and Mrs. Ben D. Miller  
Rev. Dillard Miller  
Mr. Fred A. Miller  
Mr. and Mrs. Richard Miller  
Dr. Richard Mills  
Mr. Everett W. Milner

Dr. W. C. Mims  
Miss Arkansas Pageant  
Mississippi County 4-H Club Foundation  
Dr. and Mrs. Walter S. Mizell  
Mr. C. B. Moery, Jr.  
Mr. and Mrs. Carl Moffatt  
Miss Carolyn Moffatt  
Miss Donna Moffatt  
Mr. Gwyn Monk  
Monsanto Fund  
Rev. Don Moore  
Miss Lisa Moore  
Mr. and Mrs. Neil P. Moore  
Mr. Perry H. Moore  
Mrs. Robert S. Moore  
Mrs. Joyce Morehead  
Mr. and Mrs. W. E. Morgan, Jr.  
Morrilton, First Baptist Church  
Dr. Gilbert Morris  
Mr. Jack B. Morrison  
Mrs. L. L. Morrow  
Mr. Mark W. Moseley  
Mr. and Mrs. Ernest E. Mosley  
Mr. G. R. Mosley  
Miss Melody Mosley  
Mr. Richard H. Mosley  
Mr. Thomas Ed Moss  
Moss Tractor Co., Inc.  
Mountain Home Scholarship Fund, Inc.  
Mr. and Mrs. H. D. Mouzon  
Mr. and Mrs. John F. Mowrey  
Mr. and Mrs. William E. Mowrey  
Murphy Foundation  
Murphy Oil Corporation  
Mrs. James M. Myers

## N

CPT and Mrs. Paul J. Nagy  
National Association of Tobacco Distributors, Inc.  
National Merit Scholarship Corporation  
National Mexican American College Education Fund, Inc.  
Mrs. Ronald G. Nations  
Mr. and Mrs. William S. Naylor  
Mr. and Mrs. Bill Neal  
Mr. Tommy Neal  
Mr. and Mrs. Charles H. Nelson  
Mrs. W. E. Newbolt  
Mr. Guy Newcomb  
Mrs. W. N. Nichols  
Mr. Henry C. Niehuss  
Dr. and Mrs. Alex R. Nisbet  
Dr. Joe Nix  
Terri Lynn and Jennifer Gay Nix  
Mrs. Beth Holthoff Norris  
North Little Rock Community Scholarship Fund  
North Pulaski County Pageant  
Miss Lemoine Nuckols  
Mr. and Mrs. Jesse L. Nutt, Jr.

## O

Mr. and Mrs. Alton M. Oakes, Jr.  
Mr. J. Randall O'Brien  
Odom Oil Company, Inc.  
Mrs. Betty Olberg  
Olive Street Baptist Church, Pine Bluff  
Dr. Victor Oliver  
Mr. Charles Ed Olmstead  
Mr. and Mrs. Orville Olson  
Mr. and Mrs. George L. O'Neal  
Mr. Darrell Opper  
Mr. Donald L. Orr  
Ms. Sara C. Orrok  
Mr. and Mrs. Michael C. Osborne  
Ouachita Baptist University  
Beta Beta  
EEE Social Club  
Pershing Rifles Company N-7  
RHO Sigma Social Club  
Senior Class of 1982  
Sigma Alpha Iota, Epsilon Delta Chapter

## P

Mr. Printes V. Park  
Mrs. Dean Harmon Parker  
Rev. and Mrs. Robert A. Parker  
Mrs. Linda G. Parks  
Dr. and Mrs. J. D. Patterson  
Mr. Kim Patterson  
Mr. Alfred Patton  
Mrs. Adrian Peacock  
Mrs. Jesse Peacock, Jr.  
Mr. and Mrs. E. G. Pearce  
Mr. and Mrs. W. O. Pearcey  
Mrs. C. W. Pearson  
Mr. and Mrs. Robert C. Peck  
Mrs. Janet Peebles  
Dr. George R. Peeples  
Miss D'Ann Pelton  
J.C. Penney Co., Inc.  
Miss Lily Peter  
Mrs. K. L. Peters  
Mrs. R. F. Peterson  
Dr. Gene Petty  
Pharm-Mart Pharmacy  
Mr. James Gary Phelps  
Mr. and Mrs. Kenneth Phelps  
Mr. and Mrs. T. R. Phelps  
Morgan Phillips Estate  
Phillips Petroleum Foundation, Inc.  
Pine Bluff, First Baptist Church  
Dr. and Mrs. Joseph M. Pipkin  
Ms. Kathryn D. Pittman  
Pizza Hut of Arkadelphia  
Mr. David Brent Polk  
Mrs. Mary H. Ponder  
Potlatch Foundation for Higher Education  
Mr. and Mrs. Raymond P. Powell  
Mr. and Mrs. James L. Powers  
Presser Foundation  
Dr. Bruce H. Price  
Dr. James L. Price

Mr. and Mrs. Jeff D. Price  
Miss Lisa Privett  
Dr. E. A. Provine  
Mrs. Cecile P. Provost  
Mr. and Mrs. Chesley Pruet  
Miss Amy Pryor  
Pulaski Heights Baptist Church, Little Rock  
Mr. Farris Purviance, Jr.  
Miss Neva Grace Purvis  
Mr. and Mrs. Ralph E. Pyron

## Q

Mr. and Mrs. Arle Queen  
Mr. Lowell Queen  
Miss Virginia Queen  
Dr. and Mrs. Randolph Quick  
Mr. Alan Quigley

## R

Order of the Rainbow for Girls  
Dr. and Mrs. Manuel Ramirez  
Mr. H. H. Ramsey  
Mrs. Martha Ramsey  
Mr. Walter H. Ramsey, Sr.  
Mrs. Curtice Rankin  
Mr. and Mrs. Ralph Rauch  
Mr. and Mrs. Sherman T. Rawls  
Mrs. John E. Ray, Sr.  
Dr. Rose E. Ray  
Mrs. Jean Raybon  
Mr. and Mrs. Mike Reap  
Mr. Retha Reed  
Mr. Bud Reeder  
Reynolds Metals Company  
Mr. and Mrs. Roy Rhea  
Mr. and Mrs. Robert C. Rhodes  
Mr. Gary W. Rice  
Mrs. Gerald Rice  
Mr. Ross E. Rickels  
Mr. A. G. Rietdorf  
Mr. and Mrs. Roger L. Riffey  
Rison Baptist Church  
Miss Helen Roark  
Miss Damaou Robbins  
Roberson Van & Storage Co.  
Mr. Roy W. Roberts  
Mrs. Kenneth G. Robertson  
Robinson-Bell, Inc.  
Mr. Bobby L. Robinson  
Mrs. Emma S. Robinson  
Mrs. Gene Robinson  
Dr. and Mrs. William D. Robinson  
Mrs. Kathleen M. Rodden  
Dr. Tommy Roebuck  
Mrs. Cathryn Rogers  
Mrs. J. F. Rogers  
Rogers Lumber Company  
Miss Melanie Romeburg  
Dr. Paul Root  
Miss Carol Roper  
Ross Foundation  
Mr. George Ross  
Dr. R. Wendell Ross  
Mr. James Rothwell  
Mrs. Mona L. Rothwell  
Mr. and Mrs. Steed Rountree  
Bill Roussel and Associates  
A. Rowe, III, Inc.  
Dr. and Mrs. Jack L. Royal  
Miss Lillian Royston  
Mr. Pete Rudolph  
Mr. and Mrs. James H. Rumph  
Miss Lillian Rutherford  
Mrs. Virginia Rutledge  
Dr. Edward Parsons Ryan  
Mr. Bennie Ryburn, Sr.  
Dr. and Mrs. Edwin H. Ryland

## S

Mrs. Harold Sadler  
Mr. and Mrs. Jerry St. John  
St. Paul Companies, Inc.  
Mrs. Harlow Sanders  
Mr. Kenneth Sandifer  
Sandy and Associates  
Mr. and Mrs. John E. Savage  
Dr. and Mrs. Stan Savage  
Mrs. Gillie H. Schene  
Mrs. Neva Jo Schesventer  
Miss Betty Lee Schmitz  
Mrs. Jamie Ruth Scott  
Ms. Margaret Scott  
Mr. Ed Seale  
Mr. and Mrs. Milner J. Seargeant  
Sears-Roebuck Foundation  
Mr. and Mrs. C. H. Seaton  
Mr. Ricky Self  
Dr. and Mrs. Bernes Selph  
Mrs. Carey Selph  
Dr. and Mrs. D. M. Seward  
Dr. and Mrs. Jake Shambarger  
Mr. and Mrs. C. M. Sharp  
Mr. David Sharp  
Mrs. Agnes C. Shaver  
Mr. and Mrs. Nelson Shaw  
Mr. and Mrs. Jesse H. Shelby  
Rev. and Mrs. Frank Shell  
Shepherd Auto Sales, Inc.  
Elizabeth Buford Shepherd Scholarship Fund  
Mr. Lewis Shepherd, Jr.  
Mrs. Lena Trimble Shepperson  
Sheridan, First Baptist Church  
Shoe Den, Inc.  
Mr. and Mrs. Drew Shofner  
Mr. and Mrs. Cecil Shuffield  
Mr. and Mrs. W. R. Shuffield, Sr.  
Mr. and Mrs. James Shults  
Mr. and Mrs. J. M. Shults

Mr. and Mrs. James Simmons  
Mr. Billy Simpson  
Mr. and Mrs. Mac Sisson  
Dr. Everett Slavens  
BG E. M. Sleecker  
Dr. John Small  
Mr. and Mrs. Charles L. Smith  
Dr. Clyde Smith  
Miss Dana Smith  
Ms. Frances Smith  
Mrs. George Smith  
Mrs. James F. Smith  
Mr. and Mrs. Jesse Garlin Smith  
Mr. and Mrs. J. L. Smith  
Miss Melinda Smith  
Mrs. Morene D. Smith  
Dr. Randy Smith  
Mrs. R. H. Smith  
Dr. Wayne S. Smith  
Mrs. Z. O. Smith  
Mrs. Charles Smithers  
Mr. and Mrs. Ed Snider  
Mrs. Bonita Snyder  
Grace Bone Snyder Estate  
Mr. Warren E. Sorrells  
Mr. C. F. Southall  
Mrs. J. K. Southerland  
Southern Baptist Convention  
Annuity Board  
Education Commission  
Foreign Mission Board  
Southern Baptist Foundation  
Southwest Sporting Goods  
Southwestern Bell Telephone Co.  
Dr. and Mrs. Ronald Spann  
Rev. and Mrs. Al Sparkman  
Sparkman, First Baptist Church  
Mr. Herbert Sparler  
Dr. Hoy B. Speer, Jr.  
Mrs. Eunice R. Spence  
Mr. Wallace Spencer  
Mr. and Mrs. H. A. Spraggins  
Mrs. Vicki Stafford  
Mr. and Mrs. Leland Stanford  
Judge and Mrs. Harold M. Stanley  
LT and Mrs. Larry R. Stanley  
Miss Rebecca Stanley  
Mr. Harrell D. Stark  
Mr. and Mrs. Elmer R. Starrett  
Mr. and Mrs. Robert B. Steed  
Mrs. Ray Steele  
Stephens, Inc.  
Sterling Drug, Inc.  
Mrs. Anne Mosteller Stewart  
Miss Neta Stewart  
Dr. and Mrs. Joseph Stiles  
Mr. and Mrs. Billy E. Stilwell  
LT Joseph C. Storey  
Mr. and Mrs. Lane Strother  
Mr. Ralph Stubbiefield  
Dr. John E. Stuckey  
Roy and Christine Sturgis Foundation  
Stuttgart, First Baptist Church  
Stuttgart School District 22  
Mrs. Katherine Sumerlin  
Mr. Neal Sumerlin  
Mrs. Nancy Summar  
Rev. and Mrs. Leroy Summers  
Miss Beth Sumpter  
Mrs. Minnie L. Sung  
Dr. Cecil Sutley  
Swanson's  
Mr. Glen Swims

## T

Mr. and Mrs. Sam J. Talbot  
Mr. Willie Tate  
Mr. and Mrs. Donald A. Tatman  
Mr. and Mrs. Dale F. Taylor  
Miss Elizabeth Taylor  
Dr. and Mrs. Orville W. Taylor  
Mr. Robert Frank Taylor  
Mr. and Mrs. Danny Telford  
Temple Baptist Church, Crossett  
Mr. and Mrs. Charles Templeton  
Mr. and Mrs. William Rich Terry  
Texarkana Independent School District  
Texarkana National Bank, Texarkana  
Texas Eastern Transmission Corporation  
Mr. Duane Thomas  
Mrs. Hazel Thomas  
Mrs. Mattie Mae Thomas  
Mr. and Mrs. R. F. Thomas  
Mr. Ray Thornton  
Miss Ann Thrash  
Mr. and Mrs. Lloyd Thrash  
Mr. and Mrs. Mel Thrash  
Mr. W. L. Thrash  
Thriftway Super Foods  
Mrs. Betye Jane Tiffany  
Mr. Jim E. Tillman, Sr.  
Mrs. Guinn R. Timmerman, Jr.  
Mr. Ted B. Tom  
Dr. and Mrs. C. E. Tommey  
Mr. Gene S. Trantham  
Dr. and Mrs. William E. Trantham  
Mrs. Pauline N. Treadwell  
Mr. James Berry Trimble  
Mr. and Mrs. John D. Trimble, Jr.  
Mr. John D. Trimble, V  
Miss Robin Elizabeth Trimble  
Trinity Methodist Church, Okolona  
Mrs. Margaret Tripplett  
Rev. Gerald Trussell  
Mrs. Philip Tugwell  
Mrs. Lee Tull  
Mr. and Mrs. Nelson Tull  
Mr. Ray Turnage  
Mrs. Emma Jean Turner  
Ms. Mary Elizabeth Turner  
Mr. and Mrs. Neal Turner  
Mr. and Mrs. Otis Turner  
Mr. Thomas A. Turner, III  
Dr. Thomas R. Tutor  
Mrs. R. W. Twombly

## U

United Steelworkers of America  
AFL-CIO Local Union No. 4880  
Dr. and Mrs. Thomas C. Urry  
Mr. R. Lewis Urton  
COL R. L. Utley

## V

Dr. Alfred C. Vansant  
Mr. and Mrs. Gerald M. Varnell  
Dr. W. O. Vaught  
Mr. Leo Venetta  
Mr. Andrew Verrett  
Mr. and Mrs. Earl Verser, Jr.  
Mr. and Mrs. Jack H. Vestal  
Dr. and Mrs. Maurice M. Vick  
Mrs. Ruby Vick  
Mr. Bill Vining  
Miss Kathryn Vining  
Miss Melissa Vonsenden  
Voorheesville Central High School  
Mr. and Mrs. Richard Voris

## W

Mrs. Ruth Wade  
Mr. J. Virgil Waggoner  
Elisabeth D. Wagner Foundation  
Mrs. George M. Waldorff, Jr.  
Mrs. J. D. Waldrip  
Mrs. Barney W. Walker  
Mr. Carl Walker  
Mrs. Gloria Walker  
Mr. and Mrs. Thomas A. Walker  
Mr. and Mrs. Vernon Walker  
Dr. William Edwin Walker  
Mr. S. Richard Wallis  
Walnut Street Baptist Church, Jonesboro  
Walton Foundation  
Mrs. Melba Eaton Walton  
Mr. Robert E. Ward  
Dr. Tom E. Ward  
Mr. and Mrs. James C. Warnock  
Mr. E. T. Watkins  
Mr. John W. Watkins  
Ms. Linda Watson  
Mrs. Margaret M. Watson  
M. P. Watts & Bro., Inc.  
Dr. Gilbert B. Waud  
Mrs. Martha Waymire  
Mrs. Amy Weaver  
Dr. and Mrs. Perry Webb  
MAJ and Mrs. Robert L. Webster  
Dr. and Mrs. James B. Weedman  
Mr. Raymond Weeks  
Judge and Mrs. Royce Weisenberger  
Mrs. Norman Weiss  
Mr. and Mrs. Noble Welch  
Mr. and Mrs. Orlin West  
Mrs. R. E. Westbrook  
Mrs. na westerman  
Western Electric Fund  
Mr. Theron Andrew Westmoreland  
Dr. and Mrs. A. B. Wetherington  
Mr. and Mrs. James L. Wetherington  
Weyerhaeuser Co. Foundation  
Mr. Glen Wheeler  
Mr. Bob White  
Mr. and Mrs. C. S. White  
Chaplain David A. White  
Mr. Don White  
White Furniture Company  
Rev. and Mrs. Harold White  
Mrs. Melvin M. White  
Dr. Dolphus Whitten  
Mr. Roy Whitten  
Mrs. Arnetta Williams  
Mr. and Mrs. Billy G. Williams  
Mr. and Mrs. Bobby Williams  
Mr. C. S. Williams  
Chaplain Felix J. Williams  
Mr. and Mrs. James C. Williams  
Mr. and Mrs. Joe R. Williams  
Mr. Joe R. Williams, Jr.  
Mrs. Juanita Williams  
Mr. Michael R. Williams  
Mrs. Doris B. Williamson  
Mr. and Mrs. Robert D. Willis  
Mr. John Alvin Wilson  
Dr. John Wink  
Dr. Susan Wink  
Winn-Dixie Stores Foundation  
Dr. and Mrs. Vester Wolber  
Mr. W. L. Wolfe  
Mrs. Elsie N. Wood  
Mr. and Mrs. T. J. Wood  
Mr. and Mrs. Russell Woodell  
Mrs. Howard Douglas Woodford  
Miss Juanita Maxine Woods  
Miss Sammye Lee Woods  
Mr. Jim Wooten  
Dr. Charles Wright  
Mr. and Mrs. J. B. Wright  
Mrs. Margaret Wright  
Ms. Melinda Mabray Wright  
Miss Tona Wright  
Wuerzburg High School  
Mrs. Vera M. Wyatt  
Wylie-Fowler Funeral Home  
Mr. and Mrs. Albert Wynn

## Y

Yarnell Ice Cream Co., Inc.  
Mrs. Sarah H. York  
Mr. and Mrs. Cary Young  
Dr. and Mrs. James E. Young  
Young Women's Service Club

## Z

Mrs. Mary Beth Zeagler



# Alumni campaign leaders chosen

'16

**R. Voyt Hill** of Birmingham, Ala., is a retired educator. He currently serves as a deacon and Sunday School teacher at First Baptist Church. He has received the Purple and Gold Heart Award from Ouachita and is a Gold Tiger.



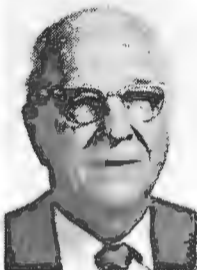
'24

**Fay Holiman** of Little Rock, Ark., is a retired teacher of humanities at Ouachita. She received the "Teacher of the Year" award from the Student Senate in 1973, and has received the Purple and Gold Heart award from the FSA. She is a Gold Tiger.



'26

**Tom Compere** is corporation counsel for Highland Park, Ill., Lake Forest and the Village of Mettawa. He is a member of the Chicago and American Bar, is active in the Illinois Municipal League and is president of the Highland Park Historical Society. In 1980 he received the Institute of Municipal Law Officers Outstanding Public Service Award.



'28

**Mrs. Elizabeth Seale Peterson** is a retired teacher living in Eudora, Ark. She is a member of Eudora Christian School Board, Delta Kappa Gamma, Delta Music Association, and is involved with her husband Bob in Lay Renewal Missions. She is a Gold Tiger.



'29

**Col. John R. Dale**, retired from the U.S. Army, is a cattle farmer in San Antonio, Tex. He was in the Chief Planning Branch in the Far East Command and was Commander of the 7th Army Aviation Group in Germany. He is Region Commander of the Military Order of the World Wars, and is a Gold Tiger.



'30

**Cecil Shuffield** of Little Rock is retired as Coordinator of Secondary Education with the state Department of Education. Currently he directs the state National Retired Teachers Association, is a deacon and adult department director at Immanuel Baptist Church, and is a Gold Tiger. He is married to Mildred Watkins (f.s.).



'31

**Dr. Withrow T. Holland** of Little Rock, Ark., is a retired pastor (most recently, Cape Girardeau, Mo.), superintendent of missions, and director of the Little Rock Center of Boyce Bi-



ble School. He taught Bible at Ouachita Baptist College, is a writer, and was awarded the honorary D.D. degree by Ouachita in 1971. He is a Gold Tiger.

'32

**T. Julian Wood** of Hardy, Ark., is a retired petroleum executive. He serves as president of Cherokee Village Lions Club, is a member of the Second Century Group and Development Council at Ouachita, and has served on the FSA Advisory Board. He is a Gold Tiger.



'33

**Herbert and Eloise Abernathy Hamilton** are in Little Rock, Ark., where she is a retired representative of Wausau Insurance Companies, is immediate past president of the Baptist Medical Center Auxiliary and serves on the board of Central Baptist Hospital Auxiliary. He is a special representative of Business Men's Assurance Co., is on the BMC Insurance Advisory Board, is a member of the National Conference of Christians and Jews, and is a deacon and adult department director at Pulaski Heights Baptist Church.



'34

**Thomas C. Hagins** is an accountant and executive with Security Financial Management Corporation in San Francisco, Cal. He is a retired Lt. Commander in the U.S. Navy and is an investor in real estate.



'35

**Dr. Joseph Stiles** is pastor emeritus of Park Place Baptist Church of Houston, Tex. He formerly was a professor of church administration and director of field work at Southern Baptist Theological Seminary, Louisville, Ky.



'36

**Dr. Sarah Lowry Varnell** of Riverside, Cal., is retired from the Riverside Public Schools. At present she is teaching mathematics part time at Riverside City College. She has been named a "Master Teacher" by the Southern California Industry-Education Council, and is a life member of the P.T.A.



'37

**Col. Robert Utley** of Fayetteville, Ark., is retired from the U.S. Army in which he served as a faculty member of the U.S. Army War College, and P.M.S. at Ouachita and the University of Arkansas at Fayetteville. He has been on the Fayetteville City Board and Executive Council of the Arkansas Municipal League.



'38

**Dr. Rivos H. Dorris** is a retired minister living in North Little Rock, Ark. He has served as Director of Missions and interim Executive Secretary for the Arkansas Baptist State Convention, and received the honorary D.D. degree from Ouachita in 1977. He is married to Jimmy Stueart (f.s.).



'39

**Mrs. Augusta Koen Boatright** of Alma, Ark., retired in 1977 with 40 years' teaching experience. She headed the Department of Social Studies, Northside High, Ft. Smith, received the Optimist Teacher of the Year and Classroom Teacher Golden Apple Awards. She has been AEA president, vice president, secretary, treasurer, served on the Political Action Committee, and been on the NEA Constitution and Resolution Committees. She has been on the FSA Board, and is married to Truman Boatright.



'40

**Clarence Cutrell** of Jackson, Miss., is a former pastor and superintendent of missions who has retired as consultant in the Stewardship Department of the Mississippi Baptist Convention. He has served as convention vice president. He is married to Wilma Shults (f.s.).



'41

**Dr. Charles F. Wilkins, Jr.**, is a physician in Russellville, Ark., where he serves as Chief of Medicine for St. Mary's Hospital. He is vice chairman of the Board of Trustees for Arkansas Blue Cross/Blue Shield, and has been president of the Arkansas Heart Association and Arkansas Society of Internal Medicine. He is married to Joyce Brown.



'42

**Printes V. Park** lives in Memphis, Tenn., and is retired from Firestone Tire & Rubber Company where he served as chief chemist. He is director of the adult Sunday School department and is a deacon at First Baptist Church. He has served as a volunteer missionary in Upper Volta, West Africa.



'43

**Col. William C. Abernathy** has retired from the U.S. Army, in which he served at the Pentagon and with the Atomic Energy Commission. Currently he is director of Industry Affairs with a contractors association in Fairfax, Va. He attends Ravensworth Baptist Church and is married to Naomi McKee, '44.



'44

**Dr. John Ed Steely** is professor of historical theology at Southeastern Baptist Seminary, Wake Forest, N.C. He has been a pastor, and head of the Bible department and Dean of Administration at Southern Baptist College, Walnut Ridge, Ark. He has authored numerous articles, books and foreign translations and was awarded the honorary D.D. degree by Ouachita in August 1982.



'45

**Dale F. Taylor** lives in Harrison, Ark., where he is pastor of Union Baptist Church. He has just retired as Assistant to the President of North Arkansas Community College, and served on the administrative staffs of three Baptist colleges, including Ouachita. He is married to Modena Holt, '47.



'46

**Dr. J. Morris Ashcraft** of Wake Forest, N.C., is dean of the faculty and professor of theology at Southeastern Baptist Seminary. He previously taught for 22 years at Southern and Midwestern Seminaries. He has authored "The Will of God" and the Broadman Commentary on Revelation. He is married to Anna Bernice Haley, '44.



'47

**Dr. John A. Hall** is a physician in Clinton, Ark., on the staff of Van Buren County Memorial Hospital. He has been honored for his local service by a community appreciation night. He is a member of First Baptist Church, the Patterson Lodge, the Ouachita Development Council, and is a 32nd degree Mason.



'48

**J. Virgil Waggoner** is president of a petrochemical company, El Paso Products Company, in Odessa, Tex. He formerly was a vice president with Monsanto in St. Louis, Mo. He is a member of Ouachita's Development Council, Texas Tech's President's Council, and the University of Texas' President's Association. He is married to June Howell, '48.



'49

**Paul Henry** is vice president of Banquet Foods-Broiler Operation in Batesville, Ark. He is president of the Associated Industries of Arkansas and past president of Arkansas Poultry Federation which named him "Man of the Year." He has served in the state legislature, is a Rotarian, and a member of First Baptist Church. He has been FSA President, chairman of the Greater Ouachita Fund Drive, has established faculty enrichment grants, is on the Development Council and holds the Purple and Gold Heart award. He is married to Virginia Southerland (f.s.).



'50

**Emil Williams** is pastor of First Baptist Church, Jonesboro, Ark. He formerly pastored in Little Rock, Lewisville and Russellville, Ark., and is a member of the Executive Board of the Arkansas Baptist State Convention. His wife is Marianne Hester, '49.



'51

**Mrs. Martha Muncy Talbot** lives in Shreveport, La., where she is a homemaker and mother of two daughters. She is active in her church, as well as civic and social clubs. Her husband Sam ('50) is an independent oil operator.



'52

**Roger Waggoner** of Wheaton, Ill., is National Manager, Contract Sales Division, of Sears, Roebuck & Co.



'53

**C. M. "Ike" Sharp** is dean of students and athletic director at Douglas, Ariz., High School where his teams have won conference and state football and baseball championships. He has been named "Man of the Year" by football coaches, athletic directors and the Chamber of Commerce. He is a deacon, church training and music director. His wife is Billie Guerln ('62) and son David is on the OBU coaching staff.



'54

**Dr. Elton Herndon** of Overland Park, Kan., is a retired pastor and administrator of Baptist retirement homes, Baptist Towers in Kansas City, Mo., and Albert Pike Retirement Towers in Little Rock, Ark. He holds an honorary D.D. degree for his contribution to the field of geriatric care.



'55

**Dr. James T. Lowman** is a professor in the Department of Pediatrics and former dean of the University of Kansas College of Health Sciences and Hospital. He formerly taught at the University of Minnesota, has served as director of the Mid-America Cancer Center Program. He received the M.P.H. degree from Harvard University in June. He belongs to numerous professional societies and committees, has published widely and is in *Who's Who in America, 1981*.



'56

**Mrs. Marilyn Shiver Nations** is in Kingsport, Tenn., where she is owner of Tri City Engravers. She and her husband, Ron, have three children. He is a research associate with Tennessee Eastman. She is active in her church library and WMU, in Girl Scouts, the Red Cross, Chamber of Commerce, AAUW, and a contemporary book club.



'57

**COL (Dr.) Benny R. Hipp** is a Colonel in the Dental Corps of the U.S. Army. He currently is stationed at Ft. Knox, Ky., where he is Chief of Oral Maxillo Facial Surgery at Ireland Army Hospital. He is a deacon and active in his church.



'58

'59

**Dr. Jim Byrd** is in Pine Bluff, Ark., where he is Director of Missions for Harmony Association. He has been professor of religion at Louisiana College, Pineville, been active in religious education professional organizations, the U.S. Army Reserve, Jaycees, and Lions International. He is married to Wencie Bonds (f.s.).



'60

**Al Hamilton** is vice president and controller of a manufacturing firm in North Little Rock, Ark. He is a C.P.A. and a member of the Arkansas Society of C.P.A. Board of Directors. He lives in Conway where he coaches a soccer team and teaches an eighth grade boys' Sunday School class. He is married to Rose Rogers, '63.



'61

**Harris Flanagin** is Youth Specialist in the Extension Department of the University of Missouri, Rolla. He and his wife, Carole Anne Brewer (f.s.), also own a gift shop. He is a deacon in First Baptist Church, is very active in Kiwanis, and is a Lt. Col. in the Army Reserve. He formerly was assistant professor of military science at the university, and has an M.S. degree in counseling and guidance.



'62

**Dr. Charles Petty** is Executive Director of the Governor's Office of Citizen's Affairs for North Carolina in Raleigh. He has been a pastor and director of the Christian Life Commission for Texas and Executive Director of the Christian Life Council for North Carolina Baptists. He has been state coordinator for the White House Conference on Children and Families, and is married to Jamie Brewer, '63.



'63

**Dr. Jim Blackmon** is a land auctioneer living in DeQueen, Ark. He is a former pharmacist and serves on the Bank of DeQueen board. He is a deacon and active in his church music program. He joined his brothers and sisters in contributing to the Eddie Blackmon Field House, honoring their father. He is married to Kaye Griffin, '73.



'64

**Roy Coulter** is owner of Hamilton Harbour Yachts, a marina in Hot Springs, Ark. He formerly was in banking in Memphis and Nashville, Tenn. He is active in First Baptist Church.



'65

**Dr. James Bledsoe** is a physician in Rogers, Ark. He did his residency in Little Rock and has served with the U.S. Air Force. He formerly lived in Booneville.



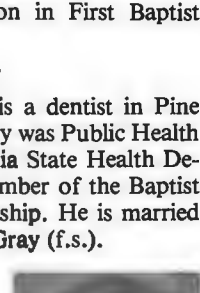
'66

**Bob Willis**, of Robert D. Willis, CPA, Ltd., in Hope, Ark., is serving as president of Hope Public School Board. He is past president of the Chamber of Commerce, United Way Campaign, and Kiwanis. He is a deacon in First Baptist Church.



'67

**Dr. Herman Hurd** is a dentist in Pine Bluff, Ark. He formerly was Public Health dentist with the Virginia State Health Department, and is a member of the Baptist Medical-Dental Fellowship. He is married to the former Denise Gray (f.s.).



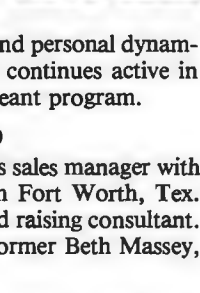
'68

**Mrs. Sharon Evans Bale** is in Little Rock where she is engaged in designing and presenting time management courses entitled "Rich in Time." She and her husband John, of Bale Chevrolet, have two sons. She has worked in promotion and personal dynamics for two banks and continues active in the Miss Arkansas pageant program.



'69

**John Maddox, Jr.**, is sales manager with Smiley Photography in Fort Worth, Tex. He formerly was a fund raising consultant. He is married to the former Beth Massey, '68.



'70

**Dr. Mark Copping** is at Southwestern Seminary in Fort Worth, Tex., working toward the M.Div. degree. He taught in the philosophy department of Vanderbilt University and for six years at Wheaton College, Ill., where he was named an "Outstanding Teacher." He served as campus BSU advisor, is in the National Guard, and is married to the former Sharon South, '71.



'71

'72

'73

**Tony Bennett** is a partner in the Famous & Spang Associates, independent insurance agency in Aberdeen, Maryland. He is a member of the Aberdeen Volunteer Fire Department, Chamber of Commerce, Aberdeen Rotary Club as well as the Hartford Cecil Insurance Association. He is married to Ann Spang ('73) and they live in Churchville, Maryland.



'74

'75

**Nelson Shaw** lives in Texarkana where he is a partner in a law firm. He is a member of the Lions Club, Texarkana Planning Commission and the Texarkana Bar Association. He is married to the former Elizabeth Enlow.



'76

**Doug Badertscher** is district manager of Equitable Life Assurance Society and lives in Shreveport, La. He is president of Broadmoor Kiwanis Club, is a past instructor for Junior Achievement projects, and teaches a twelfth grade Sunday School class at Broadmoor Baptist Church.



'77

**Bonnie Dinkel** is an account executive with South Central Bell in Mandeville, La. She is a member of the AT&T Achievers Club and the New Orleans Chamber of Commerce. She is a member of the National Small Business Association, American Rental Association, Sales-Marketing Association, and is a sports enthusiast.



'78

**Brenda Ingram** of Farmington Hills, Mich., is account manager for Resource Data System Corporation, MBI of Michigan. Her work involves selling and implementing word processing equipment as account manager for Washtenaw County (including the University of Michigan), and national account manager for Ford Motor Company.



'79

**Mrs. Vicki Lowry Haydon** of Little Rock, Ark., is Senior Internal Auditor for the Arkansas State Highway and Transportation Department. She and husband Jon restore antique cars and belong to two car clubs. She directs the Youth 11 and 12 Sunday School Department and belongs to the Church and Handbell Choirs of Second Baptist.



'80

**Donald R. Harris, Jr.**, graduated from Jefferson Preparatory School in Pine Bluff, Ark. He lives in Baton Rouge, La., where he is employed with Filtration Service Corporation, an oil filtering process company.



'81

**Cindy Massey** of Little Rock, Ark., co-chairperson, is Agency Administrator with Union Life Insurance Company. She is a former OSFer.



'81

**Mark Bennett** of Little Rock, co-chairperson, is a staff accountant with Price Waterhouse, and is a former OSFer.



## CLASS NOTES

1889

Thanks to the thoughtfulness of Mrs. Wallace Wills ('12) of Lonoke, Ark., and David E. Tate ('72) of Memphis, Tenn., Ouachitonian relatives, the university now has a well-preserved graduation announcement for 1889, the earliest to be found in the archives. The first class, 1888, shows three members. There are 13 listed in the 1889 announcement, including Mrs. Wills' uncle, Kie Oldham, and J. G. Lile. The announcement is done in the elegant fashion of its day and is a most welcome addition to the growing collection of Centennial memorabilia.

1933

Paul and Amy Ruth Tipton Elledge living in Overland Park, Kans., have been elected the first Senior Adult Consultants to the Kansas-Nebraska Convention of Southern Baptists, which in turn has resulted in their appointment to the SBC Mission Service Corps. They are continuing their relationship to the church where he pastors and she teaches.

1937

John Franklin and Jean Margaret Rosson Dunlop, parents of four children, are in Channelview, Tex. where he is president and owner of James Book Co. engaged in the distribution of Bibles, and she is a soft toy manufacturer. He was a major in the U.S. Army and has done graduate work at the University of Vienna, Austria as well as the University of Arkansas. He is active in Channelview Baptist Church where he has been a deacon, church training director and Sunday School Supt., and is a Mason.

Col. (Ret.) Raymond C. and Lita Cele Simmons Morris are in Bradford, Ark. He was a petroleum chemist with the U.S. Army, and now is a member of the White County Farm Bureau Board, is a Mason, and a deacon of Pleasant Plains Baptist Church. He has been a school board member and on the executive board of Independence Assn. and the Arkansas Baptist State Convention. Their daughters are Ouachitonians: Mary ('61) is Mrs. Aubrey Knight and Virginia "Ginny" ('74) is Mrs. Emmett Powers.

Rufus M. and Estelle Story Parham, parents of a son and daughter, are in Magnolia, Ark., where he is a building contractor and she is a retired social studies

and math teacher, having taught for 44 years, 43 of them in Arkansas. She was first-place winner in the 1968-69 National Kazanjian Foundation Awards Program for the teaching of economics. For 30 years she has taught Sunday School to youth and adults, is active in the UDC, the local AARP and the Columbia County Retired Teachers Assn. Daughter Jo Ann and son-in-law Kyle Johnson are '75 graduates.

Mrs. Melvin Spear (Christina Doyle), a widow and mother of two daughters, lives in Little Rock, Ark., where she was retired as dietitian at the V.A. Medical Center. She is a past president of Arkansas Dietetic Assn. and of the American Business Womens Assn. which had named her "Woman of the Year." She is an adult Sunday School teacher at Second Baptist Church.

Rev. R. L. and Evelyn Brewster Wilson, parents of two children, are in Broadway, NC where he is a pastor and she is a former sixth grade teacher.

1939

Raymond and Harriet Fleming ('37) Richards, parents of a daughter, are in Delhi, La., where he has retired as head football and track coach of the high school, and she has been a teacher.

1941

Rev. Hollis and Vera Horton Purtle, parents of three daughters, are in Buckner, Ark., where he is pastor and a retired teacher. The Purples have three married daughters.

1943

Carl and Clara Lou Hollon ('41) Overton, with three Ouachitonian sons, James, Kenneth and Charles, are in Hot Springs, Ark., where he is director of missions for Central Association. She is an elementary and piano teacher. They spent six months in Nairobi, Kenya in the Baptist Publishing House, assisting with the printing. He has received the D.Min. degree from Southern Seminary with a research project, "Designing Procedures for the Provision of New Facilities for Central Baptist Association."

Dr. Pat and Emma Jean Webster ('40) Moseley, parents of three children, are in Ruston, La., where he is Director of Research, Director of the Division of Allied Health, Professor of Chemistry and Associate Dean of the College of Arts & Sciences. Before coming to Tech he worked for 13 years with Hercules Powder Co. as a research chemist before he decided



"SWEET COMMUNION" — Vicki Gill, Alisa Cole, Carol Titsworth and Stacey Melton join in a campus quartet during the BSU Retreat in September at the Ozark Boys Camp, Mt. Ida.

to invest his life in young people.

In Ruston he served as chairman of the Bicentennial Committees for the city, Temple Baptist Church and the Kiwanis Club. The celebration received an honor certificate from Freedoms Foundation at Valley Forge.

His church responsibilities have included deacon, Sunday School teacher, choir, Finance and Personnel committees. He is serving now on the Baptist Joint Committee on Public Affairs as a SBC representative.

His professional work has placed him on review panels with the National Science Foundation and Public Health Service, HEW.

Mrs. Ed Flaig (Neno Nowlin), Dean of Women and Instructor in English at Ouachita, and mother of Gaye, Gail, and Sunny, has been elected treasurer of the Arkansas Council for Women in Higher Education.

1945

Irene Branum, missionary nurse to Korea, who was feted impressively on her

60th birthday four years ago, had another "spectacular" in her honor upon her retirement from mission service in June. In April she received a presidential citation for her three decades of work as a nurse in South Korea where she "devoted her efforts to promoting the improvement of the public health for the Korean people."

A medal of appreciation, a gold watch, and other gifts accompanied the citation in the award ceremony held in Seoul.

Formerly a nurse at Ouachita, Miss Branum directed nursing at a Baptist hospital in China for several years before going to South Korea in 1951. She supervised supplies at Wallace Morial Baptist Hospital in Pusan, worked to extend public health service in rural areas outside the city, was active in local churches, and used her nursing skills in orphanages and nursing homes. She also personally paid hospital expenses of some patients unable to afford them.

Miss Branum has retired in Arkadelphia where she is already active in First Baptist Church, and is using it as a departure point for a series of trips in and out of state.

Robert A. and Sara L. Biggs Wells, parents of three children and four grandchildren, are in Newhall, Calif., retired September 15 from his Directorship of Northern Nevada Missions headquartered in Reno, where he helped to start 41 new works in 13 years. He has pastored in Arkansas, Texas, California and Washington and served as Southern Baptist Radio and Television Commission representative from both California and Washington, and on the executive boards of both state. Both graduated from Southwestern Seminary, and she has been a school teacher.

Dale and Modena Holt ('47) Taylor are in Harrison, Ark., where he has retired from 35 years of college administration and she from teaching. He has been Assistant to the President of North Arkansas Community College until October 1, and is continuing to serve as pastor of Union Baptist Church. She retired in 1980 after teaching kindergarten for 11 years and home economics for 14. She is Children's Coordinator for the church and is active in associational work.

Mr. Taylor is a former business manager at Ouachita, 1939-50, and son Frank ('59), has served as registrar until this summer when he began work on a doctorate in school administration at the University of Arkansas, Fayetteville.

Granddaughter Lisa, a freshman, is the third generation at Ouachita.

1947

Rev. John Warren and Bonnie Walker Nutt, parents, of two daughters and two sons, are in Atlanta, Ga., where he is a minister and public high school counselor, and she teaches in the elementary gifted program.

Orville and Fae Dean Thomasson Roberts, parents of a son and daughter, are in Paragould, Ark., where he is Superintendent of Schools and is active in First Baptist Church as a deacon, in Lion's



NIGHT LIFE — Now and then, the accelerated Ouachita pace slows down enough to allow time for a necessary study date. The Evans Student Center Bridge makes a comfortable place for Bill Izard of North Little Rock and Nancy Watson of Fordyce to read and rest.



Club for which he has been president, and PTA, of which he is a Life Member. He formerly was secretary of the YMCA in DeWitt.

## 1949

**Jack Farris**, professor of English at Southwestern at Memphis college has had his latest novel, *Me and Gallagher*, a story loosely based on the Montana Vigilante Movement of the 1860s, published by Simon & Schuster, and selected as an alternate by the Literary Guild. His previous novels are *Ramey* and *A Man to Ride With*. In 1980 his drama, *Into Thy Narrow Bed* was produced in Memphis.

## 1950

**Rev. Preston and Dorie Jean Bowers Taylor**, parents of two children, are in Dilley, Tex., where he pastors First Baptist Church. He has recently written his third book, *A Letter From Peter*, 24 chapters in length, dealing with all of the material in I Peter. His previous studies have been in Exodus and Philipians. The Taylors formerly served as missionaries in Argentina for nine years, and have pastored in Carrizo Springs, Tex.

**Dr. John H. McClanahan**, pastor of First Baptist Church, Pine Bluff, Ark., since 1965, was named an "Alumnus of the Year" by Southern Baptist Theological Seminary during its national alumni association luncheon at the Southern Baptist Convention in New Orleans in June.

**Dr. McClanahan** has been a guest professor of the seminary for several courses, holds the B.D., Th.D., and Master of Sacred Music degrees from Southern, and has served as president of the national alumni association. He has authored *A Call to Contemporary Discipleship*, written frequently for denominational publications; served on the Executive Board of the Arkansas Baptist State Convention; OBU Board of Trustees; Southern Baptist College Trustees; Baptist Medical Center; Christian Life Commission; SBC Executive Committee; participated in an Air Force Tour; and conducted tours of the Holy Land where his in-laws have served as missionaries. The Sunday morning worship service of First Church is televised throughout Arkansas and the congregation has recently dedicated a new Family Life Center.

The McClanahans (she is the former Rosalind Owen) are parents of four children, David ('76), Donald ('80), Steve and Laura Elizabeth, and the former

Robert William and Dottie Franks (f.s.) Misses, parents of two sons, are in Blount, Miss., where he pastors New Hope Presbyterian Church and she is an elementary teacher. He organized the Boone County Association for Retarded Children and Adults in Hartman, Tenn. In 1968 he has been U.S. Governor of Awards in 1969; and organized the Savage Gulf Preservation League in McMinnville, Tenn., in 1977.

## 1951

**The FSA Gremlin has struck again!** (Admittedly, Gremlins mean nothing except a car to those born after W.W. II.) We have transposed two of the seven James Walkers in the alumni files and assigned James A. and Mattie Lou Paul Walker to the Director of Missions position in Muncie, Ind., when they properly are in Little Rock where he is Secretary of Stewardship for the Arkansas Baptist State Convention. They also are parents of **H. Karl ('78)**, living in Little Rock, and **James Ethan Walker, ('80)**, now serving as a missionary journeyman in the bookstore in Jerusalem, Israel. See 1953 for the proper assignment of James L. Walker in Indiana. Forgiveness, please. The FSA records gradually are being moved to the computer. Until everyone has an ID number, we'll have to blame ourselves for identification errors.

**Rev. Johnny Jackson**, pastor of Forest Highlands Baptist Church in Little Rock, Ark., a trustee of Ouachita and former president of the Arkansas Baptist State Convention, was named to the SBC Home Mission Board of the Southern Baptist Convention. **Johnny, Jr. ('77)**, and his wife, **Tanya (f.s.)** are in Memphis, Tenn.

**Dr. Thomas L. and Annette Presswood ('52) Tedford**, parents of two children, are in North Carolina, where he is a professor of speech at the University of North Carolina in Greensboro. He is up at 5 a.m. daily typing and writing on his classwork, research and publications. A private piano



**LEAGUE OF NATIONS** — Soccer at Ouachita is a club rather than a varsity sport. Composed largely of M.K.'s (Missionary Kids) and internationals, the players are members of the Arkansas Soccer League and receive part of their support from the student senate.

and organ teacher, she finds the pipe organ in a local church as her accommodation to the typewriter. She is planning to return for her 30th reunion at Homecoming this year. In 1971 she received a Beta Sigma Phi award for music composition in Greensboro, has been president of the local Music Teachers Association, and is a Board member of Euterpe Club. She belongs to the American Guild of Organists and the national, state and local Federation of Music Clubs.

## 1952

**Henry R. and Betty Frances Burchfield Chesser**, parents of three children, are in Searcy, Ark., where he is a minister and public school teacher, and she is a dental assistant.

**Carroll and Margaret Lucile Belcher Evans**, parents of two children, are in Hughes, Ark., where he pastors the First Baptist Church. He is a 32nd degree Mason, holding positions of Knight Commander of the Court of Honor, and is Orator and Soloist for the Scottish Rite Temple, West Memphis. He is also a member of the Lions Club and has made four trips to Bible lands.

**Dr. Ed T. and Fern Wilkins Stanford**, parents of two daughters, **Gayle and Cindy (f.s.)**, are in Memphis, Tenn., where he is a veterinarian and she works in their animal hospital. They are members of Cherokee Baptist Church and she has taught Bible in Sunday School for 18 years.

**Jack M. and Jonelle Ritchie Fore**, parent of three children, are in Prescott, Ark., where he is Nevada County Deputy Prosecutor, and she is with Fore's Department Store. Their children are **Shannon Langley ('79)**, **Susan Ne (f.s. '78)**, and **James Monson**.



**HISTORIAN** — Dr. Henry Steele Commager, one of America's most distinguished historians, opened the J.E.C. lecture series this fall with a speech on "U.S. Foreign Policy: Perceptions and Misperceptions." The visit, his second to Arkadelphia, afforded an opportunity for faculty and students at Ouachita and Henderson and for townspeople as well to meet him personally.

tored First Baptist Church, and have been in West Palm Beach, Fla., where he was Academic Dean of Palm Beach Atlantic College. He was a New Testament fellow at Southern Seminary for three years and taught Greek there for two years. He then held pastorates in Arkansas, Kentucky and Florida. She is a science teacher, with an M.Ed. from Florida Atlantic University.

## 1954

**Mark and Margie Horne Short, (f.s.)**, parents of five children, are in New Orleans where he has begun this fall, as associate professor of Church Administration at NOBTS. His wide-ranging denominational service includes music and education ministries in Arkansas, Kentucky, Oklahoma and Tennessee. He formerly served as manager of Glorieta Baptist Conference Center in New Mexico, and has been associate director of the Church Programs Services Division of the Louisiana Baptist Convention.

He received the B.A. degree from the University of New York, the M.L.S. from the University of Oklahoma, and has attended Southwestern Seminary. Broadman Press has published his book, *Bible and Business*.

## 1955

**Edward L. and Phyllis Starkey Powers**, parents of two children and of two grandchildren, are in Cotter, Ark., where he is director of missions for White River Association. In his 30 years of ministry he has pastored eight churches in Arkansas, most recently in Mountain View.

## 1956

**Lynwood and Lorene Gunnell Henderson** are in West Memphis, Ark., where he pastors Calvary Baptist Church. They have five children and four grandchildren. For 15 years he served as pastor of three churches in Alabama, and is currently Sunday School Director and Vice-Moderator of Tri-County Association. He has been asked to write the International or Convention Uniform Sunday School series for the SBC.

## 1957

**Ray and Peggy Caldwell Robbins** are in Little Rock where he is a professor in the College of Business at UALR, and she is a business education teacher. They have a son and daughter.

## 1958

**Paul and Barbara Steelman Stone** are in Hitchcock, Tex., living on the Gulf and commuting to Houston where he is Senior Project Engineer with Gulf Oil and she is school counselor at Dulles High School, believed to be the largest in Texas, with an enrollment of nearly 4,300.

**Dr. Ray H. and Kathleen Daniels Kesner** are in Kansas City, Mo., where he is Director of Denominational Services and Alumni Affairs at Midwestern Baptist Theological Seminary, and she is employed in the seminary library. They have three sons.

## 1959

**Lonney and Jean Hughes Hulsey**, parents of three daughters and a son, are in Albia, Iowa, where he is pastoring. They have been engaged in Pioneer Missions with the HMB, and are active in the Iowa Southern Baptist Fellowship, he as an executive board member and associational moderator, and she as WMU Director for the state.

## 1960

**Ben W. and Susan Herron Bledsoe** are in Memphis, Tenn., where he is serving as a prison chaplain and she is a pharmaceutical representative.

**Dr. Norton Allen and Jerry Carter (f.s.) Pope** of Little Rock, Ark., continue to watch their 16 year-old daughter Beth rack up the laurels in gymnastics. The *Arkansas Gazette* has named her "Arkansas High School Athlete of the Year" in recognition of the following achievements: Over-all winner, U.S. Olympic Committee's National Sports Festival gymnastic competition; Over-all winner, U.S. Gymnastics Federation Single-Elimination Tournament in Nevada; Over-all winner, Fiesta Bowl Gymnastic Meet in Arizona; Member of national team competing against China in dual meet in Hawaii (and the only American to receive a medal); and member of the national team touring Japan for a dual meet.

The press calls her a "paradox." "When she mesmerizes a crowd with her gym-



**THE WINNER** — Equal time was given to Arkansas' gubernatorial candidates on campus this fall in a student chapel debate and in visits from the men themselves. Hilary and Bill Clinton, the new first family of the state, talk with Nancy Crone Burbank during a recent campaign stop at Ouachita.

nastics performances, the spectators are touched by her graceful, delicate, artful moves. When a coach evaluates her performance, he sees her pure strength and power . . . The combination is one few master at all. Even fewer can blend the power and the grace into an exciting bravura the way Beth Pope can."

Beth is the middle of five children. David is a pre-med student at Ouachita, and Debbie is rooming with Gov. Frank White's daughter at the University of Arkansas. Father Norton is a plastic surgeon and mother Jerry keeps up her violin when family scheduling permits.

Betty Krudwig Whitlow is Office Manager and Administrative Secretary to the Vice President for Development of California Baptist College, in Riverside, Calif., Todd, a ward, has just finished high school, Jason is a senior, and Emily is in the ninth grade.

#### 1961

Albert J. and Drollene Plattner Tittle Brown, Jr. are in Boca Raton, Fla., where she began her own decorating business, after years of teaching sociology and serving as branch manager of a savings and loan company. He is self-employed as a consultant in construction and maintenance supervision.

Jim and Beverly Worrell (f.s.) McDaniel, Joel Mark, Dina Gay and Michael James, are in Brinkley, Ark., where he has been pastor of First Baptist Church for the past 10 years.

#### 1962

Ronnie H. and Cheryl Diane Smith Adams, parents of three children, are in Grand Prairie, Tex., where he is Minister of Education and Outreach and she is a preschool teacher and homemaker.

Charles and Virginia Ann Hearn Doggett, Jason and Julianne, are in Nashville, Tenn., where he is Marketing and Promotion Coordinator for the Church Training Department of the Sunday School Board and she is a teacher.

His denominational service includes "Tentmaking" while he was at Ouachita, pastoral, youth and education-administration ministries in Arkansas, Texas and Florida. He has directed the Pioneer Royal Ambassador Department, SBC, from Memphis, Tenn., and edited the Youth Section of the Church Training Department.

He holds a number of civic recognitions including the Tulsa Optimist Citizenship Award, Boy Scout Order of the Arrow, Instructorships in the American Camping Assn. and Evelyn Wood Reading Dynamics. In addition to leading Glorieta and Ridgecrest conferences, he has been program director for the 5th National RA Congress in 1973 and Mission Games in 1974. Personally, he has hiked the Appalachian Trail, Grand Canyon, DeSoto Trail, Shiloh Trail and the Everglades.

As a writer, he has authored over 100 articles for denominational publications, as well as a series of study and teaching guides and manuals.

James and Julia Price DuCote, Jeremy and Meggan, are in League City, Tex., where he is a lawyer and owner of an in-

surance agency, and she teaches high school math. They belong to Nassau Bay Baptist Church, Houston.

Ted and Mary Ridgell (also '69) Stanton, Mark, Lisa and Eric, are finding new sufficiencies of God's grace as they continue in Buenos Aires, Argentina, where unemployment has reached 20 percent, the cost of living has increased to 137.2 percent for the past 12 months, and the one year inflation rate is 1,799 percent. Crime is growing more intense, the education system is "ravaged by decades of neglect" and the highway fatality rate is 5.2 times as great as that of the U.S. A family 10-day trip to the "wild west" of northwestern Argentina in July brought them some breathtaking scenery in mountains, semi-jungles and deserts, historical sites, large cities and quaint Indian villages.

Ralph and Dr. Susan McClelland Felder are in Metairie, La., where he is a systems analyst and she is a dentist and part-time professor in Biomaterials and Research in

the LSU Dental School. They have two daughters, Loretta Lou and Christi Cherie. In addition to belonging to international and national professional organizations, she is a member of the Memorial Baptist Handbell Choir.

Thomas and Sara St. John Duke, Cadace and Whitney, are in Magnolia, Ark., where she owns an interior design and gift shop and he owns Mustang Electric, an oil company. She is president of the Junior Charity League, former president of Magnolia Music Club, Welcome Wagon, Fine Arts Council and Music Teachers Assn. of South Arkansas. She belongs to Central Baptist Church and the Symphony Guild.

Mike and Diane Moseley Hopkins are in West Columbia, Tex., where he is president of Hospital Ancillary Services, Inc., and she is a medical technologist. (ASCP).

John Paul and Martha Manuel (f.s.) Johnson, Venecia, Leigh and Stephanie, are in Oklahoma City, where he is Assistant Attorney General and she is a teacher.

#### 1963

Norman and Beverly Gallegly ('64, '69) Coad, have returned to Bobo Dioulasso Upper Volta, West Africa, and since July 1, have opened up a new station for the mission in the city with a population of between 200,000-300,000. They are to survey, develop a strategy and evangelize the city and surrounding areas. They have begun studying Djoula (Jula), their third language since they began mission work. David is a music major at Ouachita.

#### 1965

Maj. Frank R. and Mary Ethel Smith ('65) Hash, are in San Antonio, Tex., where he is in the U.S. Army and she is with the Academy of Health Sciences at Fort Sam Houston.

Diane Cheatham (f.s.) Worthington, is a management analyst with the National Park Service in Denver, Colo.

#### 1966

Charles Steven and Frances Colvert Black, Christopher and Cindy, are in Little Rock. He is in real estate with Winrock

Enterprises and she has been recognized as the 1982 Arkansas Home Economics Teacher of the Year by the state affiliate of the American Home Economics Association.

She has taught Home Economics at the Arkansas School for the Deaf a program involving total communication of spoken language, finger spelling, sign language and gestures, and requiring patience, love and understanding. Her award was given in recognition of excellence and innovation in Home Economics teaching.

She belongs to First Baptist Church and is active in several professional organizations.

John Edward Blount is area manager for south central United States for Illinois Tool Works, and lives in Pine Bluff, Ark.

Dr. H. Hugh and Paula Floyd, Jr., Michael Ryan and Stephan Stokes, are in Metairie, La., where he is associate professor of Sociology at the University of New Orleans and she is a commercial artist.

#### 1967

William C. and Mary Jane Speer Beard and Jennifer are in North Little Rock, where he teaches Spanish and French at Ole Main and she teaches math at McClellan High in Little Rock.

Clayburn and Jessie Hice (f.s.) Bratton, parents of Vicki Winkle ('70) and Luann ('81, '82), are in Fort Smith where he pastors James Fork Baptist Church in Hartford, and serves as a LTC (Chap.) in the Arkansas Army National Guard.

Martin (f.s.) and Alice Keith Collier are in Percy, Ark., where he is a field underwriter with New York Life Insurance and she is a Reading Specialist at Lake Hamilton Intermediate School. Their son James, a freshman, comes to Ouachita as one of the best track men in the state in the 880 yd. run. Alison is 13. They belong to Piney Baptist Church and to Lake Hamilton Optimists and Opti-Mrs.

Dr. Doug and Patsy Hill ('70) Dickens and Lori Hill, are in Hot Springs, where he pastors First Baptist Church, and she has a private practice in speech therapy. He was appointed this summer to the state Community Mental Health Advisory Board by



**CELEBRATION** — Sigma Alpha Sigma men's social club makes a big noise this fall during its 50th anniversary. They've been busy with their cannon at the football games, and are putting together homecoming reunion dinner plans marking the historical event.





**CHARIOTS OF FIRE** — Ouachita's cross-country team races through the North Campus pecan grove in preparation for its November conference meet. Dr. Bob Gravett's runners consistently finish in the top division of AIC cross-country competition.

Gov. Frank White.

R. Gene and **Hattie Barnes Dorman** and **Angelia** are in Little Rock where he is a sanitarian with the state Health Department and she is a department manager with National Investors Life Insurance Co.

**Nat** (f.s.) and **Barbara Ann Lybrand Dutton**, **Natasha**, **Angela**, **Paul**, and **Sonya**, are in Simpson, La., where he pastors Slagle Baptist Church and drives a truck for Boyce Truck Co., and she is a kindergarten teacher.

**CDR Quincy** and **Becky Gannaway Grigson**, parents of **Lance** and **Shawn**, are with the U.S. Navy Supply Corps. He is comptroller with the U.S. Naval Supply Depot in Subic Bay, Republic of the Philippines.

**Cheryl Jenkins** is Territory Manager for Ross Laboratories, in sales of pediatric and medical nutritionals and pharmaceuticals. She lives in Jonesboro, Ark., where she formerly was employed as program director with the Dairy Council, with the **Brad R. Walker Rehab Center**, and as a home trainer of handicapped children. She has just completed a term as Northeastern Arkansas representative on the FSA Advisory Board.

**Dr. Dwight Kaufman** and his wife, **Dr. Joan Jacobson**, and **Jacob**, are in Bethesda, Md., where he has a three year grant to study Oncology (cancer) and is working at the National Cancer Hospital. He is the son of **Marcus** and **Margaret Crawford Kaufman** (both '40), of Arkadelphia.

**Dr. Hoy B.** and **Marolyn Saunders Speer, Jr.**, and **Christine Elise**, are in Stuttgart where both are physicians, he in family practice, and she, a radiologist.

**Dr. Don R.** and **Jo Anne Stokes** ('66) **Taylor**, **Don R.**, II and **Sharon**, are in Alameda, Calif., where he pastors Central Baptist Church and is president of the ministerial association. He received his D.Min. degree at Gold Gate Seminary.

**Jean LaVerne Walz** is a planning and research analyst with the Arkansas State Highway and Transportation Dept., living in Little Rock.

#### 1968

**Bob** and **Jamie Shaw** (f.s.) **Snider**, **Karren** and **John Robert** are in Little Rock, Ark., where he is vice president with **T. J. Raney & Sons**, investment brokers. Formerly he was press assistant to Senator **John McClellan** in Washington, D.C., and later administrative assistant to Senator **Kan-easter Hodges, Jr.**

He has reactivated the **Bob Snider Trio** as "Among Friends," a gospel group that performs for churches and other Christian gatherings. The original group of **Snider**, **George McMorrin** (f.s.) and **Nancy Rogers** (f.s.) **Stout**, has added **Dan Morris** who joins them in composing most of their repertoire. This summer they produced their first tape.

**Bill Tarkington** is now associated with **Polo/Ralph Lauren** in San Antonio, Tex., where he is buying men's, women's and children's clothing. He has been Visual Merchandising Director for **M. M. Cohn** of Little Rock's 12 stores for the past 11 years.

**Wes** and **Judy Philliber Kent**, **Jodi** and **Sam**, live in North Little Rock, Ark. He is Pre-College Associate in the Arkansas

Baptist State Convention Department of Evangelism, and she is vice president and loan administrator of Union National Bank. She recently has been elected president of the Loan Administration Division of the Mortgage Bankers Association of Arkansas. **Judy** spoke at the FSA Senior Luncheon last January while **Wes** was on a mission trip to Malawi.

**Dennis** and **Nancy Goodson** (also '71) **Mills**, **Drew** and **Leah Denise**, and in **Arkadelphia** where he is manager for community relations for Southwestern Bell for Southwestern Arkansas. She formerly taught at **McClellan High School** in Little Rock, and they have lived most recently in **Camden** where he was telephone company manager.

**Sharon Evans** (f.s.) **Bale** (Mrs. **John Bale**, of **Bale Chevrolet**, Little Rock), mother of **John Bale, III**, has teamed up with **Y-Teen** friend **Alice Lynn Overbey**, in designing a time management course, "Rich in Time." **Sharon's** experience in the **Miss Arkansas** and **Miss America** pageants, and work in promotion and personal dynamics for executives of two banks has contributed to her side of the partnership.

The two women, through their Junior League affiliation are offering the course this fall through the Episcopal Churchwomen of **St. Mark's Church**. **Sharon** has lead a career development course for the Junior League already, and **Mrs. Overbey** has taught a course on "time management" from the Christian point of view for several years.

Their copyrighted course is built around personal notebooks, with a financial binder as an option. They have future plans for minicourses for high school students and younger children, and perhaps for women becoming mothers for the first time.

#### 1969

**Ted** and **Connie Sue Allen** (f.s.) **Viala** are in Little Rock, Ark., where he is local sales manager for **Arkansas Radio Network**. He has had varied interests in real estate before joining **ARN**, as a charter member of the **Million Dollar Real Estate Club**, vice president of **McKay & Co.**, sales manager of **Shearin & Assocs.**, **Martin McDaniel Realtors**, and most recently, **Chandler Realty**.

**Mrs. Lee Lorick** (**Myrna DeBerry**), who distinguished herself in college basketball in the **Pan American Games**, making five **All-America** teams, being named captain of the U.S. team four times, and making five world tours, is making basketball a career.

After **Ouachita**, she played with an independent team in **Kansas City** for three years. She then returned to Arkansas to coach at **Stuttgart High School**, and is now in her seventh season as girls coach at **Hot Springs**.

#### 1970

**Eddie** and **Carolyn Helms Reed** are in **DeQueen** where he is Minister of Education and Music at **First Baptist Church**. They formerly were at **Third Baptist Church**, **Malvern, Ark.**

**Bob** and **Jane McCallum** ('71) **Stover** are in Little Rock where he is assistant city

editor for the **Arkansas Gazette** and she is special assistant to Governor **Frank White**.

**Jerry** and **Bonnie Tarpley Taylor**, **Angela**, **Nanci** and **Melanie**, are in **Tok, Alaska** where he pastors **Tok Baptist Mission**. They originally were in **Fairbanks**. The **Tok-a-Tan Women's Club** nominated him to receive the **First Lady Volunteer Award**, and he was one of the 20 selected from 160 nominees in the state.

Some of the organizations and activities that qualified him for the award are: **Volunteer Fire Dept.**, **Emergency Medical Technician**, **Volunteer Ambulance Co.**, **Mental Health**, **Rural Education Center**, and **Advisory School Boards**. He entertains **Senior Citizens** with his singing and guitar, directed the community **Christmas cantata** and **4th of July** activities. He belongs to the **Chamber of Commerce**, is **VFW Voice of Democracy Coordinator**, assists at **Dog Musher Race of Champions**, and is a volunteer for **Tok school** activities, such as running clocks, video-taping games, keeping books, driving the school bus on occasion, judging science and talent fairs, and helping with the school music program.

The **Taylor**s chaperone a youth skating party once a month, and offer their home, clothing, food and even chauffeuring to hitchhikers and travelers in need. The **Alaska State Troopers** often refer travelers to them for aid. **Jerry** has sought training and paid for his classes to be of maximum help in his small rural community.

#### 1971

**Thomas W. Chambers** is president of **Resorts Development International** in **Carrollton, Tex.**

**Steve** and **Sandy Hughes** ('72) **Peoples**, **Brent** and **Stacey**, are in **Clinton, Ark.**, where he teaches and coaches football and track and she teaches elementary music. They are active in **First Baptist Church** where they work with single adults.

**John Edwin** (f.s.) and **Susan Todd Giles, Jr.**, are farming in **Quitman, Ark.**

**John Scott Phillips** is in **Green Bay, Wis.**, where he teaches and coaches, and is business manager for **Tempcon, Inc.**

#### 1972

**Paul** and **Mary Latimer Thane** and **Allison Renee** are in **Texarkana, Ark.**, where he is in purchasing with **Moore's Plumbing Supply** and she teaches kindergarten. They are active in **Beech Street First Baptist Church** where he teaches seventh grade Sunday School and she is director of the four-year-olds. Both play on the church softball team.

**Chuck** and **Janice Pritchard** (f.s.) **Ward** and **Paul David** are in **Siloam Springs**, where he pastors **Harvard Avenue Baptist Church**. She is a former elementary school teacher who graduated from **Texas Wesleyan, cum laude**, in 1975, while he received the **M.Div. degree** from **Southwestern Seminary**. He is a **Rotarian**.

**Linda Diane Williams** is a coach and **P.E. teacher** in **White Oak Middle School**, **Longview, Tex.** She formerly was at **Hope, Ark.**, **Junior High**.

**Jim Miller** is on leave from **Arkansas State University**, working as a graduate assistant in the doctoral program at the **University of Missouri, Columbia**, in adaptive physical education. His wife, the former **Diane Barber**, is in the doctoral program in math education. **Jim** has

coached in junior and senior high in **Little Rock** and **North Little Rock, Ark.**, and at **Ouachita**.

**Walter** and **Diane Mutch Bruening**, **Jason Walter** and **Jared Ralph**, are in **Springfield, Mo.**, where he is a machinist with **Burlington Northern Railroad** and she is a homemaker. He is a deacon and **R.A. director** in their church.

**Marilake Lawrence Farmer** and **Fonda** are in **Foreman, Ark.**, where she teaches **Home Economics**.

**David** and **Donna Jean Carl Henderson**, and **Kelly Carl** are in **Roanoke, Va.**, where he is associate pastor of **Virginia Heights Baptist Church** and she teaches school.

**Dr. John Seth** and **Phyllis Peters Holston**, **Heather** and **James**, are in **Orange Park, Fla.**, where he is a physician and she a homemaker.

**John T. Jones** is manager of the **Consumer Loan Department** of **First Federal Savings & Loan** of **Little Rock, Ark.**

**Betty Fowler Kerns** (Mrs. **Arthur Jay Kerns**), is in **Little Rock** where she is a school library/media specialist and he is an attorney. Last year she was president of the **Arkansas Association of School Librarians**.

**Martha Chadwick Lindvall** and her children are in **Bald Knob, Ark.**, where she teaches secondary English.

**Steve** and **Mechele Beshears** (f.s.) **McMichael** and **Christa** are in **Grand Junction, Colo.**, where he is an associate pastor and director of family ministries and she is a homemaker.

**Edmond E.** and **Pat Hawthorn Ramsey**, **Sarah Rebecca** and **Wesley Miles**, are in **Clarksville, Ark.**, where he pastors **Second Baptist Church** and she is **BSU Director** for **College of the Ozarks**.

**Victor D.** and **Julia Lois Friday** ('74) **Rettmann, Jr.**, parents of **Victor Alan** ('79), **Sandra Lois** (f.s. '77) and **Angela Dawn**, are in **Nashville, Ark.**, where he pastors **Bingen Baptist Church** and is principal at **Lockesburg**. She is a librarian at **DeQueen**.

#### 1973

**Roselin Orr Andrews** and **Rebekah Ruth** are in **San Angelo, Tex.**, where she is a dietitian with **Shannon Hospital**. She graduated with honors from **Texas Tech** in '76, and earned her **M.S. degree** in public school health from **Southwest Texas State University** this summer. Formerly she was a dietary consultant with **ARA Services, Inc.**, to 10 nursing homes in the **Lubbock area**.

**James Reese** and **Marylin Kay Woodliff** ('74) **Morrow** are in **Pahrump, Nev.**, where he is a carpenter and she teaches art.

**Bobby E.** and **Bobbi Beeson** ('72) **Shepherd**, **Matthew Joseph** and **Sarah Elaine**, are in **El Dorado, Ark.**, where he is an attorney with **Spencer & Spencer**, and she is a homemaker. They belong to **First Baptist Church** where she is active with **Baptist Young Women** and chairman of the **Kindergarten/Day Care Committee**. She belongs to the **Art Auxiliary, YWCA, Service League** and **Child Study Club**.

**Johnnie** and **Shirley Ware** are in **Newport News, Va.**, where he is assistant city manager and she teaches math.

#### 1974

**Paulo Barbosa** is in **Baghdad, Iraq**, as manager of a shipping company. Previously he was employed in shipping in **Rio de Janeiro, Brazil**.

Your Will and Ouachita

## Can one gift annuity benefit both husband and wife?

Yes. As long as either partner lives, the income from a gift annuity may go to both husband and wife. There are some important things you need to know about income tax and estate tax savings, tax free income, how you can increase your present income, and also help **Ouachita Baptist University** after your death.

For more information write to **Lloyd Cloud, Senior Development Officer, Ouachita Baptist University, Box 754, Arkadelphia, AR 71923**, or call **246-4531, Extension 169**.



Walter Scott and **Ramona Holiman** Gordon are in Alameda, Calif., where he is associated with A. T. Kearny Consulting Firm and she is enjoying a few months of leisure after serving as an attorney with the Small Business Administration in Washington, D.C. She is awaiting the result of the California bar exam.

**Lloyd E. Hodge** (f.s.) is an auditor with the state Social Services in Little Rock.

**Timothy J. and Pamela J. Johnson** Rains are in Cincinnati, Ohio, where she is associate pastor of Wyoming Baptist Church. Formerly she was chaplain at Bethesda Hospital there.

#### 1975

**Katherine Dame-Ehrenberg**, staff attorney with Central Arkansas Legal Services, and her husband, Harry L. Ehrenberg, Jr., vice president of Harry L. Ehrenberg & Associates, are in Little Rock, Ark. She is vice president of the Little Rock Jayettes and a member of Archview Baptist Church.

**Sheila LaFran Moore** is in River Ridge, La., employed as music secretary and children's choirs director of First Baptist Church, Kenner. She has an M.R.E. from New Orleans Seminary and formerly taught at Mid-City Playcare in New Orleans.

**Larry and Martha Lancaster Reeder** and **April Chelaine** are in Marshall, Tex., where he is instrumental coordinator and director of bands at East Texas Baptist College, working on his doctorate at Southwestern Seminary and serving as percussionist with the Shreveport, La., Symphony. She is assistant professor of piano and theory at the college and last year taught part time in the seminary music department.

**CPT Gary and Barbara Ann Mosley Rothwell** are in El Paso, Tex., where he is an air defense officer with the U.S. Army.

**Carol Seaton Snyder** is associate pastor of Shawnee Presbyterian Church in Kansas City, Kans., and her husband, Alan Jon Snyder is an elementary school counselor. They live in Kansas City.

**2LT R. W. "Buddy" and Susan Powers** (f.s.) Erickson are in Columbus, Miss., where he is in pilot training with the U.S. Air Force and she is a clinical nutritionist at the Golden Triangle Regional Medical Center. She received her BSE in vocational home economics from UCA and an M.S.E. in guidance counseling from ASU in 1980. She has taught home economics at Jonesboro and Pocahontas high schools.

**Joe** (f.s.) and **Christa Parker Lambert** are in Longview, Tex. He is with the Oilwell Co. of Kilgore.

#### 1976

**Greg and Pamela Pruitt** (f.s.) Kirksey and **Angela Jo** are in Camden, Ark., where he pastors Hillside Baptist Church.

**Gregory Brent and Jackie Hunter Meeks** are serving as missionaries in Taichung, Taiwan.

**CPT Paul and Ora Sue Higgins Nagy** are stationed with the Marines in Camp LeJeune, N.C., living in Jacksonville. She finds herself quite involved with the Officers' Wives Club, including being fund raising chairman in charge of a celebrity auction. She drew on her Arkansas and Ouachita experience (formerly secretary to the Executive Secretary-Treasurer of the



**BLITHE SPIRIT** — Miss Lily Peters of Marvel, Ark., Arkansas' Poet Laureate, brought light, life and joy to the Ouachita campus again as she addressed English classes and spoke to the Second Century Dinner guests the last weekend in October.

Arkansas Baptist State Convention) for such names as **Cliff Harris** ('70), Miss America, **Fess Parker** and **Ron Ely**.

**Dr. Charles L. and Kathy Weaver** ('78) **Poteet**, **Elizabeth Alice** and **Andrea Marie** are in Little Rock where he is a physician and she is a homemaker.

**Debra Kay Barnes** is cataloging librarian in the library at the Arkansas State Capitol, Little Rock. She is a member of First Baptist Church.

**Edward "Bear" and Jennifer Sue Cox Smith**, and **Sarah Elizabeth**, are in Mammoth Lakes, Calif., where they are doing pastoral mission work in church extension and resort missions in the eastern High Sierra Mountains. He is graduating from Golden Gate Seminary this December. She is a graduate of Samford University, Birmingham, Ala., and Southwestern Seminary.

**Keith** (f.s.) and **Roxieann Foster** are in Leola, Ark., where he is working in public

relations for Arkansas with Texas Oil Refinery Corporation.

#### 1977

**Mike and Sheila Bechtelheimer** (f.s.) **Atkinson** are in Little Rock where he is a partner and she is vice president in Time and Life Management, an eight-week program to help corporations and individuals get what they want out of life, from losing weight, quitting smoking, making more money, to mending domestic fences. Through management by objective, with some updates, they help participants set goals and establish accountability for meeting them. Family goals, in the Atkinsons' case, take priority over the determined accumulation of money their success could lead them to realize.

**Ray Dean and Angela Barfield** ('78) **Brown** are in Camden, Ark., where he is minister of education and music at First Baptist, Cullendale, and she is a teacher.

**Timothy Patrick and Laura Buczkowski Daven**, and **Kinsey Leigh**, are in Little Rock, Ark., where he is a commodity broker with Merrill Lynch and she is a homemaker. She teaches Sunday School at Calvary Baptist Church and is on the nursery committee.

**Ron and Terry Jones Glidewell** are in Poplar Bluff, Mo., where he is member relations advisor for Ozark Border Electric Cooperative and she is a teacher's aide for the deaf in the public schools.

**Mike Goodwin** is in the communication office of the Little Rock School District, with prime responsibility for education access Channel 19 on cable TV.

**Ross and Liz Milender Grant** live in Grand Prairie, Tex., and commute to their respective schools. He is now leading the DeSoto High School Eagle band, and she is assistant junior high band director in Arlington. Ross has been assistant band director at Grand Prairie High for the past two years where he designed the marching shows, arranged all of the marching music and designed the flag work. The band received numerous "I" ratings in competition and last year was named outstanding in its 5A class at the Cleburne Marching Contest. It was further cited for its out-

standing drum line. The Grants belong to Inglewood Baptist Church, Grand Prairie, where **Randel Everett** ('71) is pastor and **Roger Margason** ('72) is minister of music.

**Robert Dean and Suellen Wilcoxon Hester, Jr.**, and **Robert Ross** are in Cleveland, Miss., where he is a special agent with Farm Bureau Insurance in Cleveland and she is learning disabilities instructor in the Presbyterian Day School. They belong to First Baptist, and she is a member of Delta Cotton Wives, the Hospital Auxiliary and Ephfic Woman's Club.

**Chris and Audrey Snider** (f.s.) **Humphreys** are in Port Huron, Mich., where he pastors Gracemont Baptist Church of Marysville. He brightened the FSA Office day with his answers on his reunion biographical form. Under children he claimed their parakeet, Big Bird, born June 27, 1979. Under recognitions and honors, he states, "I married Audrey!" As to her occupation, he says "phlebotomist/housewife." The dictionary explains phlebotomy as "the formerly common act or practice of bloodletting as a therapeutic measure." His permanent address was "See above (unless the church has something else in mind)."

**Lee and Debra Kaye Wallace Padgett, Jr.**, are in Lexington, Ky., where he is minister of program coordination at Trinity Hill United Methodist Church and she is director of Christian education and church visitor for Epworth United Methodist Church. He is chairing the subcommittee on video tape ministries for the Kentucky Conference and together they have directed a children's camp at Camp Aldersgate.

**Jane Sharp** teaches special education and sponsors the cheerleaders and drill team at Russellville, Ark., High. Her girls come to the OBU-HSU basketball game each year to stage half-time entertainment, which always ends up with a surprise for the stands. She also directs the 4th-5th grade choir at First Baptist Church.

**Terry E. Smith** is an environmental specialist with Central Power & Light Co. in Portland, Tex. He is a member of the Texas Baptist Board of Trade, National Energy Institute, Electric Power Research Institute and Air Pollution Control Association.

**Bill and Brenda Griffin Sutley** are in Monroe, La., where he is news editor of the *Monroe News-Star-World* and she is a student at Northeast Louisiana University. His paper won eight awards, more than any other in the state, in the Louisiana-Mississippi Associated Press Association annual contest, and Bill placed second in the general news features category for 1982.

**Terry and Cindy Corley Viala**, and **Tracy Ann**, are in Little Rock where he is senior territory manager with Johnson & Johnson sales and she is a homemaker. They belong to Calvary Baptist Church.

**Lee and Phyllis Orr** (f.s.) **Walker, Jr.**, and **Lee R., III**, are in Pine Mountain, Ga., preparing to go to Chile as missionaries, he as a music consultant, and she as a church and home worker.

**Diana S. Campbell** (f.s.), secretary to **Dan R. Lasater**, investment banker, was listed with photo among "Arkansas' 10 Best Catches" in a full page Sunday feature in the *Arkansas Democrat* this year. It pays tribute to her warmth, smile, impeccable style, and says, "She combines tall, lady-like elegance with an incredibly infectious sense of humor."

#### 1978

**Carolyn Hansen** is a travel consultant with Poe Travel in Little Rock. She recently returned from a two-week driving tour of Germany, Switzerland and Austria with **Terri Savage**. Terri is a customer service representative for AP&L. They both live in North Little Rock.

**Dr. Frank and Lisa Susan White** ('79) **Orr** are at Fort Carson, Colo., where he is a captain in the Dental Corps. He received his D.D.S. degree from the University of Texas Medical Health Services School in May.

**Bill and Mona Rowe Rowland and Matt** are in Hope where he has resigned from coaching and is now an agent with Anderson-Frazier Insurance. She teaches seventh and eighth grade math, entering a brand new school this fall. They are active in First Baptist Church where he is a deacon.

**Jeff F. Teague** is in Walnut Ridge, Ark. where he owns Teague Chevrolet Olds.

**Tom and Lynne Kinnaman Wesson** and **Emily Jean** live in North Little Rock. He is general superintendent of Kinco, Inc., and



**FRESHMAN ORIENTATION** — **Andy Westmoreland**, Director of Student Activities, choreographs the meeting of nearly 100 student leaders who await 500 freshmen as they exit the President's Hour in Mitchell Hall their first day on campus. The incoming students are divided into groups of 20 for the orientation period.



**FRESHMEN?** — Nathan Michael, 6; Joseph Paul, 2½, and Mark Hays, 8, sons of Mike (f.s.) and Martha Hays Hurst ('71) of Van Buren, Ark., are receiving the indoctrination afforded to all good Ouachita children when their parents come back to the campus. The senior Hursts are faithful Development Council members and reunion-goers.

she teaches second grade. They belong to First Baptist, Little Rock.

Maylon and Donna Robertson (f.s.) Rice and Katy are in Wynne, Ark., where he is the new managing editor of the weekly *Wynne Progress* and she works part time in the First Baptist Church office, while finishing her degree at ASU. He formerly edited the *Times-News* for McGehee/Dermott.

#### 1979

David F. Martin, vice president and associate director of research with Area Market Research Associates, also serves Cranford Johnson Hunt & Associates as associate director of research. He has come into Arkansas homes repeatedly in connection with The Arkansas Poll for station KATV, appearing on their newscasts and serving as an integral part of their election night coverage. He and his wife, the former Sheree Atkins, live in Little Rock, Ark.

Curtis Dean Morris, who is in Sterling, Colo., has been awarded the Master of Music degree by Southwestern Seminary with his composition "Celebration Symphony."

Mrs. Bryce Swindler (Nherl McMullan) has been named office manager for Cranford Johnson Hunt Associate, largest advertising, marketing and public relations corporation, which she has been serving as secretary of accounts receivable for two years. Her husband is vice president of General Mechanical Contractors.

David and Sonia Hutchins ('80) Garrison are in California where he was awarded the M.Div. degree from Golden Gate Seminary in June. He was elected by the faculty to receive the Broadman Seminarian Award for 1982, a 12-volume Broadman Bible Commentary set for "demonstrating excellence in the field of biblical studies and for possessing attitudes and skills necessary for effective Christian ministry."

They have been Journeymen to Hong Kong where he was assistant lecturer on religion and philosophy at Hong Kong Baptist College and she was a youth worker in the International Church.

Tim and Carol Shafer Grimes are living in McLemoresville, Tenn. He is an instructor in ITT Telecommunications, Apparatus Division, in Milan and she is a teacher.

Jon Michael and Vicki Lowry Haydon are both employed with the Arkansas State Highway & Transportation Department in Little Rock, Ark., he as fuel tax auditor and she as internal auditor.

#### 1980

Julie Cussons Sarrett (Mrs. Mike) and Cynthia Gossett are working together in real estate management in Dallas, Tex. Julie handles condominium management and Cynthia, apartment complexes and business parks. Mike is at Southwestern Seminary.

Timothy Lee and Deborah Grisham Shrader are in New Orleans where he is minister of youth and music at Elysian Fields Ave. Baptist Church and works in the NOBTS music library, and she teaches public school music.

Donald Eugene and Barbara Cantrell Slizes are in Memphis, Tenn., where he is in the University of Tennessee dental school and she is in-house auditor with the National Commerce Bank.

ILT Tim and Cynthia Sharp Timmerman are in Rapid City, S. Dak., where he is a missile wing instructor with the Air Force and she is teaching in a multi-cultural, multilingual classroom. She has served as GA director and soloist at Temple Baptist Church, and participated in a Family Growth Conference, 4th-6th grade, with the Northern Plains Baptist Convention.

Charles and Teresa Annette Bright Nye are in Shreveport, La., where he is a sales and management specialist for Hubbard

Farms, Inc., and she teaches special ed.

Don (former staff) and Angie Coston (f.s.) Finley, are in York, Pa., where he is youth and education director for Temple Baptist Church and she is an instructor for mentally retarded adults.

Donna Gaye Witcher is a physical therapist at Lucy Lee Hospital, Poplar Bluff, Mo.

Darry Lee and Deborah Dumser Marshall, Amber and Aaron are living in Bartlett, Tenn., where he is teaching Old Testament, physical science and coaching junior high football and senior high baseball at Evangelical Christian School.

Neal and Nancy Whitten ('79) Turner and Erin are in Reno, Nev., where he is assistant football coach at the University of Nevada-Reno, in charge of the Wolf Pack receivers. They appreciated the visit from Dr. Hal (chairman, Political Science Department) and Mitzi Bass and their children on their way back to Arkadelphia from the summer seminar on the American political system he attended in Berkeley, Calif., thanks to a grant from the National Endowment for the Humanities.

#### 1981

David L. Jackson is minister of campus evangelism at Central Baptist Church in Jonesboro, Ark., where he has just completed an M.M. degree at ASU. His assignment includes enlisting, enrolling and winning students, faculty members and employees from the university. In addition to supporting the church program, he will direct the University Choir, lead out in retreats and fellowships and work with the BSU and Campus Crusade.

Deronda Stone is librarian at Caddo Hills School and living in Glenwood, Ark.

Terri Walker is teaching at Eisenhower High School, Aldine Independent School District, Houston, Tex.

William Gregory and Dana Reece Almand are in Little Rock, Ark., where he is news director with KXLR radio and she is advertising representative for General Publishing Co. Both are studying law at UALR.

Bill Buffalo is in Pine Bluff with Hollis McClain & Howell, Ltd., CPA.

Elizabeth Ann Buffalo lives in Benton and is employed by Wal-Mart.

Suzanne Campbell is office manager of Attorneys Office Management, Inc., in Little Rock, Ark.

Cindy Gill is an intern contract specialist for the Defense Department, U.S. Army Missile Command, at Redstone Arsenal, Huntsville, Ala.

Jill Jackson is a nuclear medicine technologist at Warner Brown Hospital in El Dorado, Ark.

Bill and Susan Robinson ('80) Smith are in Poplar Bluff, Mo., where he teaches and coaches basketball, and she is a speech therapist in Paxico.

#### 1982

Wayne Fawcett is football coach at Lakeside High School, Hot Springs, Ark.

Jim Ed Stilwell is circulation manager with the *Northwest Arkansas Times* in Fayetteville.

Jess (f.s.) and Laura Porter Hairston are in Mansfield, La., where he is managing Wal-Mart.

Carl E. and Robin Trimble (f.s.) Bradley are in Houston, Tex., where he is employed with W. M. Dewey & Sons.

Bill D. and Barbara Taylor Farrar are in Fort Smith, Ark., where both are accountants, she with Superior Savings & Loan, and he with Dixon, Taylor & Carroll, CPA's. (That's Mike Carroll, '77.)

Warren Stacks of Redfield, Ark., is a chemist with the Arkansas State Plant Board.

Melody Mosley is with WJHL-TV in Johnson City, Tenn., where she works 30 hours a week, reporting at night, Monday through Friday, does the 11 p.m. weather, and "Nightwatch," the last news (taped) before sign-off at 2:35 a.m. She writes and produces the news, weather and sports (ha! she says). She subs for their anchor people, and really loves the whole business (with the possible exception of the pay). She pays tribute to Mac Sisson's training in the News Bureau and says to tell the communications students that there are jobs to be had in small markets for the persistent.

In addition, she is doing graduate work in urban affairs at East Tennessee State.

Tony and Ladonna Cowart Smith are in Irving, Tex., where he is attending Dallas

Institute of Funeral Service and she works for Docutel/Olivetti Corp. in marketing.

## MARRIAGES

#### 1961

Drolene Plattner Tittle to Albert J. Brown, Jr., May 28, 1982, Boca Raton, Fla.

#### 1967

Becky Dryer Smith to Michael Murdock, June 18, 1982, Hot Springs, Ark.

#### 1972

Pam Vinson to Kenneth Raspberry, January 9, 1982, Corning, Ark.

#### 1973

Bonnie to Donald L. Couch, July 17, 1982, living in Kirkwood, Mo.

#### 1974

Pamela J. Johnson to Timothy J. Rains, June 12, 1982, Cincinnati, Ohio.

Janet A. Jernigan to Frank William Heft, Jr., July 10, 1982, Louisville, Ky.

#### 1975

Melissa Mohon to William E. Papineau, September 18, 1982, Wichita, Kans.

#### 1976

Cindy Cobb to Dr. Paul W. Davis, May 22, 1982, living in Pine Bluff, Ark.

#### 1977

Jane Kendrick to Wes Lites, May 29, 1982, Magnolia, Ark.

#### 1978

Ann Hakan to Daniel Hickey (f.s.), December 23, 1981, living in Kansas City.

Gina Morin to Andrew Lee Vining, August 7, 1982, Donaldson, Ark.

Vickie Denise Wiley to William Scott Willis, August 18, 1982, Gainesville, Ga.

Roxanne Hargis to Dennis Ray Watkins, October 16, 1982, Hope, Ark.

Melody Ann Wise to Larry Chelsie Burns, March 20, 1982, North Little Rock, Ark.

#### 1979

Elizabeth Esther Bodie to Tony Lynn Yocum, October 16, 1982, Pine Bluff, Ark.

Judy Morrison to Michael Briggs, March 20, 1982, Marion, Ark.

Sarah Nell Bishop ('81) to James Michael Jones (also '81), June 16, 1982, Bradley, Ark.

Gena Ann Hendrix to Dr. Don Michael Carter, July 10, 1982, Fort Smith, Ark.

Melinda Anne Sain to Timothy Carl Goodson, September 4, 1982, McGehee, Ark.

Susan Kathleen Walbridge ('81) to Gregory Wayne Everett, August 28, 1982, Richwoods, Arkadelphia.

#### 1980

Patricia Ann Hogan to Jeffrey Neal Blackburn, July 31, 1982, Little Rock, Ark.

Cristeil M. Crawford (f.s.) to Jerry Rickard, December 8, 1981, living in Courtland, Miss.

Darla Sue Smith to James Walker Burleson, June 12, 1982, Owasso, Okla.

Jill Jones to Travis Holland, July 31, 1982, Shawnee, Okla.

Denise Duren ('81) to Stephen Edds, May 1982, Pine Bluff, Ark.

#### 1981

Lacy Newman (f.s.) to Jeff Rogers, August 21, 1982, Smackover, Ark.

Sarah Bishop to Mike Jones, June 19, 1982, Bradley, Ark.

Dana Allison Reece to William Gregory Almand, August 1982, Shreveport, La.

Pamela Jo Cook to Thomas E. Jackson, October 9, 1982, Little Rock, Ark.

#### 1982

Deborah Gay Holley to Jeffrey Ronald Root (p.s.), August 7, 1982, Arkadelphia, Ark.

Mary Jo Ford to Joseph Edwin Cooley, September 4, 1982, Arkadelphia, Ark.

Mary Edith Barrett to Bruce Allen Coleman (p.s.), August 7, 1982, Warren, Ark.

Lillian Elizabeth Neighbors to Dennie Lee Ashley (p.s.), August 13, 1982, Amity, Ark.



**PIZZA HUT GIFT** — The Ouachita Athletic Department is \$1,000 richer due to the generosity of the Arkadelphia Pizza Hut in turning back one-half of a day's earnings to the school in celebration of the Hut's Tiger Day held recently. Bill Vining (third from left), OBU athletic director, receives the check from Kevin Boone, Pizza Hut manager. Looking on are Derrick Horsham (left), assistant manager, and Jim Graham, district manager.



**Pamela Gay Evans** to Mickey R. Mad-dox, July 17, 1982, Stuttgart, Ark.

**Present Students**

**Peggy Jo Clay** to **Tony Olen Woodell**, August 21, 1982, Perryville, Ark.  
**Debra Gale Banzhof** to **Daniel Martin Feldman**, August 21, 1982, Berry Chapel.  
**Diana Carol Hunt** to **Joe David Hawkins**, summer 1982, Little Rock, Ark.

**BIRTHS**

**1967**

Dr. **Dwight** and Dr. Joan Jacobson **Kaufman**, Jacob, September 5, 1982, Bethesda, Md.  
 Dr. **Doug** and **Patsy Hill** ('70) **Dickens**, adopted by Lori Hill, July 27, 1982, Hot Springs, Ark.

**1968**

**Kenneth** and **Nan Wynn Hall**, Troy Gene, July 9, 1982, Alton, Mo., Wynn is 9½, Ayra Lou, 6.  
**Robert** and **Rebekah Ray** ('75) **Bray**, Aaron Samuel, September 7, 1981, living in Gonzales, Tex.

**1970**

**Grandy** (also '73) and **Judee Thompson** ('73 and '79) **Royston, III**, Guy Andrews, July 24, 1982, Hope, Ark.

**1971**

**James** and **Rita Justus** ('72) **Guthrie**, Jessica Renae, May 20, 1982, Jonesboro, Ark.

**1973**

**Basil** and **Sylvia Gibson** Cooke, Whitney Michelle, January 13, 1982, Pittsburgh, Pa.

**1974**

**Roscoe** and Barbara Morris **Stidman**, adopted by Rebecca Michelle, January 15, 1981, Arlington, Tex.

**1975**

Tommy and **Jena Smith** (f.s.) Nelson, Bradley Edward, May 19, 1982, Corpus Christi, Tex. Wesley Thomas is 2.  
**Wayne** and Gail Austin **Poe**, Nichola Rene (Nikki), August 23, 1982, Santa Cruz Do Sul - RS, Brazil.  
**Jim** and **Carol Crowder** ('78) **Veneman**, Justin (not "Austin" — how could we have done that in our last issue!) Cole, April 4, 1982, Fordyce. (Thanks for the good humor.)  
 Gary and **Paula Jameson** (f.s.) Bergstrom, Henley Carol, March 21, 1982, Camden, Ark.  
 Dr. Clark and **Terrye Carter** Fincher, Amy Elizabeth, August 14, 1982. Ashley Ann is 1½.  
**Don** and **Mona Martin** ('76) **Elliott**, Kathryn Elizabeth (Kate), February 4, 1982, Fayetteville, Ark.  
**Tom** and **Karen Taylor** ('76) **Rutledge**, Kyle, August 20, 1982, Russellville, Ark.

**1976**

**Curtis** and **Ede Purcell Hogue**, David Michael, June 26, 1982, Fayetteville, Ark. Brian Curtis is 1.  
 Dennis and **Mary Hogue** Rampley, Meredith Denise, January 5, 1982, El Dorado, Ark.  
 Stephen and **Linda Davis** Hoffman, Kent Charles, July 16, 1982, Little Rock,

Ark. Brett Frederick is 1½.

**Bruce F.** and **Diane McGary Rodtnick**, Traci Leigh, July 18, 1982, Pine Bluff, Ark. Brother Kerry Lynn is 3.

**1977**

**Brian** and **Dawn Miller** (f.s.) **Carroll**, Ted Franklin, May 4, 1982, North Little Rock, Ark.  
**Que Russell** and **Sharon Watson Grigson**, Laura Elizabeth, June 27, 1982, Fort Meade, Md.  
**Brice** and **Vicki Wilson** ('79) **Wagner**, Jennifer Lee, June 29, 1982, Rogers, Ark.  
**John Scott** (f.s.) and **Pat Warner Pope**, Joshua Doyle, April 6, 1982, Little Rock, Ark.  
**Richard** and **Susan Fay Edds**, Alyssa Sue ("Truthful One," Ps. 51:6), May 8, 1982, Lone Grove, Okla.  
 Pat and **Carla Callaway** Falkner, Rebe-kah Allie, June 16, 1982, Oxford, Miss.  
**David** and **Laura Dewbre** (f.s.) **Wilson**, Rachel Ruth, April 20, 1982, Strong, Ark.  
**Steve** and **Amy Anderson Cheyne**, Amy, June 24, 1982, Conway, Ark. Hannah Marie is 18 months.

**1978**

Bill and **Mona Rowe** Rowland, James Matthew (Matt), March 3, 1982, Hope, Ark.  
**Randy** and Janet Cruse **Granderson**, Lindsey Nicole, August 28, 1982, North Little Rock, Ark.

**1979**

**Donald** and **Jamie Winkle**, Laura Rae, February 22, 1982, Little Rock, Ark.  
**Guy** and **Elena Cowser** ('81) **Key**, Jonathan Wesley (God is gracious, Num. 6:25), June 16, 1982, Fort Worth, Tex.  
**Richard** and **Dottie Arnn** ('77) **Brown**, Sarah Elizabeth, May 11, 1982, Little Rock, Ark.  
 Phil and **Sarah Barr** Brumley, Brandon Phillip, May 1, 1982, Malvern, Ark.

**1980**

**Stan** and **Janie McKenzie Turnipseed**, Stanley Keith, II, June 21, 1982, Fort Smith, Ark.  
**Byron** and **Golddean Davis** (f.s.) **Crown-over**, Adriann Nicole, June 19, 1981, Fort Polk, La.  
 Darry Lee and **Deborah Dumser** Marshall, Amber Dawn, November 15, 1980, and Aaron Dustin, May 23, 1982, living in Bartlett, Tenn.  
**Jack** and **Carol Goodson** ('79) **Davis**, Jared Stephen, August 21, 1982, Mombasa, Kenya.

**1981**

**Garry** and **Paula** (f.s.) **Hanvey**, Justin Michael, June 21, 1982, Pasadena, Tex.

**1982**

**Danny** (p.s.) and **Susan Brackett**, Rachel Elizabeth, August 8, 1982, Arkadelphia, Ark.

**DEATHS**

**1908**

Mrs. A. J. Caldwell (**Lenora Dudley**)

**1918**

Mrs. W. R. Winn (Jane Dean Carpenter McFarland), September 10, 1982, Hot Springs, Ark.

**1919**

Mr. **Lynn Wilson**, Danville, Ark.  
 Rev. **T. J. Watts**, September 9, 1982, Camden, Ark.  
**James N. Martin, Sr.** (f.s.), May 1982, San Antonio, Tex.

**1920**

Mrs. Robert C. Robertson (**Frankie Condray**), August 15, 1982, Chattanooga, Tenn.

**1921**

Mrs. G. E. Keizur (**Lillias Watters**), July 3, 1982, Waco, Tex.

**1929**

LTC (Chap) **John Kilburn**, January 6, 1982, Pine Bluff, Ark.

**1932**

**Al Daniel** (f.s.), November 9, 1981, Prescott, Ark.

**1933**

Rev. **James Birkhead** (f.s.), September 5, 1982, Memphis, Tenn.

**1935**

Rev. **James O. Young**, Village, Ark.

**1936**

**Arch Cooper**, January 28, 1982, Benton, Ark.

**1939**

**Orville M. Odom**, June 6, 1982, Bradley, Ark.

**1940**

MAJ **James Gilbert** (f.s.), Malvern, Ark.

**1942**

**Frank Hodge Thompson** (f.s.), July 1981, El Dorado, Ark.

**1943**

**T. J. Cowan**, October 9, 1980.

**1945**

**Roy C. Maddux**, Little Rock, Ark.

**1949**

Rev. **Harold H. Coble**, Westminster, Calif.

**1950**

**W. H. White**, April 8, 1982, Delhi, L.

**1980**

**James Daniel (Danny) Turner**, August 28, 1980, Hot Springs, Ark.

**Staff**

Tommy Freeman, October 14, 1982, Arkadelphia, Ark.

**Know some future Ouachitonians?**

CLIP AND RETURN

TO: DIRECTOR OF ADMISSIONS COUNSELING  
 FROM:

NAME ADDRESS CITY ST. ZIP PHONE

Below are listed students from my area who are seniors in high school that I think would be interested in Ouachita. I would like for the Admissions Counseling Staff to contact these and cultivate their interest. Return this form to:

Director of Admissions Counseling  
 OBU Box 776  
 Arkadelphia, AR 71923

Name Address City St. Zip Phone H.S. Attending

\_\_\_\_\_

\_\_\_\_\_

\_\_\_\_\_

\_\_\_\_\_

\_\_\_\_\_

\_\_\_\_\_

\_\_\_\_\_

\_\_\_\_\_

Do you know of any high school senior who would be interested in OBU? See back page and send their names to OBU Admissions Counseling.

**Memorial Contributions June 1-August 31, 1982**

Miss Pearl Bell  
 by Mrs. Fred Dillard  
 Dr. George Blackmon  
 by Mr. E. R. "Buddy" Coleman  
 Mr. Eugene K. Carey  
 by Mr. and Mrs. Billy Williams  
 Mr. Harold C. Caudle  
 by Miss Lois Gardner  
 Mrs. Julia Dalrymple  
 by Mr. and Mrs. Kenneth Cofer  
 Mrs. Ida Mae Dickens  
 by Mr. and Mrs. Graham Fowler  
 by Dr. and Mrs. Cecil Sutley  
 Mr. Jerry Ferguson  
 by Mr. Larry Kilbury  
 Mr. Thomas Leslie Garrett  
 by Mr. and Mrs. William S. Naylor  
 Dr. Joseph "Joe" Glasgow  
 by Miss Lois Gardner  
 Mr. Ben Haynes  
 by Mr. and Mrs. Kenneth Cofer  
 Mr. William G. Hilliard  
 by Mr. and Mrs. Kenneth Cofer  
 Mr. Cecil Kemp  
 by Mr. and Mrs. Thomas L. Ashcraft  
 by Mr. and Mrs. Lloyd Gaskill

by Mr. and Mrs. Clifford C. Chandler  
 by Dr. and Mrs. Daniel R. Grant  
 by Mr. and Mrs. O. J. "Buddy" Harris  
 by Mrs. Bessie McClain  
 by Dr. and Mrs. Jack McHaney  
 by Mr. Jack B. Morrison  
 by Mr. and Mrs. Robert L. Nelson  
 by Mr. and Mrs. Aubrey Park  
 by Mr. and Mrs. James R. Staggs  
 Mrs. Rose B. Kimes  
 by Mrs. J. O. Hobgood  
 Mr. Roy C. Maddux  
 by Mrs. Raymond Anderson  
 Mr. James N. Martin, Sr.  
 by Mrs. Andrew L. Burns, Sr.  
 Mr. B. A. Newman  
 by Mrs. J. O. Hobgood  
 Mrs. Pearl Newman  
 by Mr. and Mrs. A. A. McLaughlin  
 Mr. Orville Odom  
 by Mr. and Mrs. Frank M. Cochran, Jr.  
 by Miss Laura Jane Cochran  
 Mr. Curtis "Blue" Pullig  
 by Mrs. Curtis Pullig  
 Mrs. Ruth Hall Pumpfrey  
 by Dr. and Mrs. Andrew M. Hall

Dr. Warren S. Riley  
 by Mrs. Lillie M. Smith  
 by Mrs. Morene D. Smith  
 by Mrs. Eunice R. Spence  
 by Mr. and Mrs. Jack H. Vestal  
 by Mrs. Gloria C. Walker  
 Mrs. Frankie Condray Robertson  
 by Mr. and Mrs. Searcy Elrod  
 by Mrs. J. O. Hobgood  
 by Dr. and Mrs. V. V. Kniseley  
 by Mr. R. A. Lile  
 by Mrs. Mary Jo McCorkie  
 by Mrs. Raymond L. Mays  
 by Miss Eutha F. Neighbors  
 by Mrs. Verda Thomasson  
 by Miss Mae Whipple  
 by Mrs. Helen Wilson  
 Mrs. Frances Scott  
 by Mr. and Mrs. Millard E. Aud  
 by Col. and Mrs. John T. Berry  
 by Dr. and Mrs. James C. Berryman  
 by Dr. and Mrs. Thomas W. Bolton  
 by Miss Catherine Condray  
 by Miss Frances Crawford  
 by Mr. and Mrs. E. G. Flaig  
 by Dr. and Mrs. Daniel R. Grant

by Mrs. J. O. Hobgood  
 by Miss Kathryn Jones  
 by The Clark McCarty Family  
 by Mr. and Mrs. H. W. McMillan  
 by Mr. and Mrs. Toney D. McMillan  
 by Merchants and Planters Bank, Arkadelphia, AR  
 by Miss Virginia Queen  
 by Mr. and Mrs. William T. Rutledge  
 by Mr. and Mrs. Charles E. Sharpe, Jr.  
 by Mr. and Mrs. Robert V. Shuff  
 by Ms. Carolyn Reid Sisney  
 by Mr. David M. Strain  
 by Mr. and Mrs. Donald Tatman  
 by Mrs. Ruth Ann Wade and Sons  
 by Dr. and Mrs. A. B. Wetherington  
 by Mr. and Mrs. Billy G. Williams  
 Mr. Phillip H. Taylor  
 by Mr. and Mrs. Jack H. Vestal  
 Rev. James O. Young  
 by Mr. and Mrs. Max R. Epperson  
 by Mr. and Mrs. T. P. Wallace  
 by Mrs. Julia A. Weatherall

**IN HONOR OF:**  
 Mrs. Glennie Spears  
 by Mrs. James H. Spears



# OUACHITA!

OUACHITA BAPTIST UNIVERSITY  
ARKADELPHIA, ARKANSAS 71923

ADDRESS CORRECTION REQUESTED

Nonprofit Org.  
U.S. POSTAGE  
PAID  
Arkadelphia, Ark.  
71923  
Permit No. 34

## OUACHITA BIBLE LANDS TOUR

Sponsored by Former Students' Association



Dr. Cecil Sutley

We have made some important changes in our annual Bible Lands tour since our previous announcement. These have preserved the high quality but reduced the cost to the lowest we have seen for a tour of equal quality and extent: \$1,549 from New York, including all meals and most other necessary expenses. Our 11-day tour (December 27-January 6) will include EGYPT and ISRAEL. Our tour will be directed by Dr. Cecil Sutley (who will be making his 23rd Holy Land tour) and Dr. Gene Petty (his third Holy Land tour) — both of our Religion faculty.



Dr. Gene Petty

If the present conflict in the Middle East should pose a threat to us, of course we shall cancel and return all monies. However, our experience has been that conditions are usually settled enough by our departure date that we enjoy very good tours. In fact, in the 23 years we have been going, we have only had to cancel twice. We are always treated well by both Arabs and Jews.

-----  
TO: Dr. Cecil Sutley, FSA Director of Travel Services, OBU, Arkadelphia, AR 71923

( ) Please send full information on your December 27-January 6 Bible Lands tour.

( ) Please keep me (us) on your mailing list. I (We) would especially be interested in a summer tour to:

NAME \_\_\_\_\_ TELEPHONE \_\_\_\_\_

ADDRESS \_\_\_\_\_

CITY \_\_\_\_\_ STATE \_\_\_\_\_ ZIP \_\_\_\_\_