



THE 1950

*Quachitonian*





*The Ouachitonian*  
OF  
1950



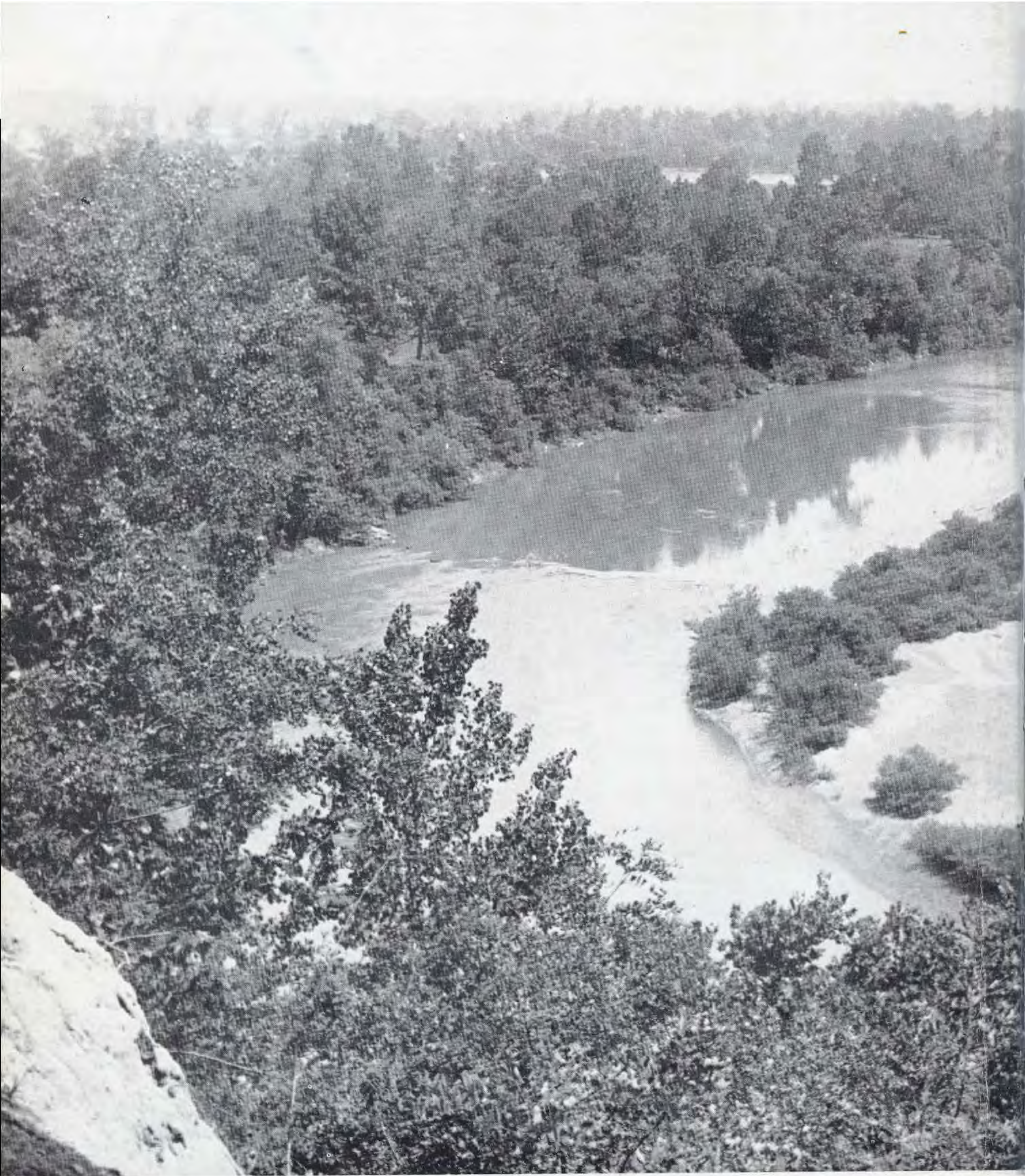
MARY ALICE LEETON, *Editor*

DARELL ROSS, *Business Manager*

ANNUAL YEARBOOK  
PUBLISHED BY THE STUDENTS OF  
OUACHITA BAPTIST COLLEGE  
ARKADELPHIA, ARKANSAS

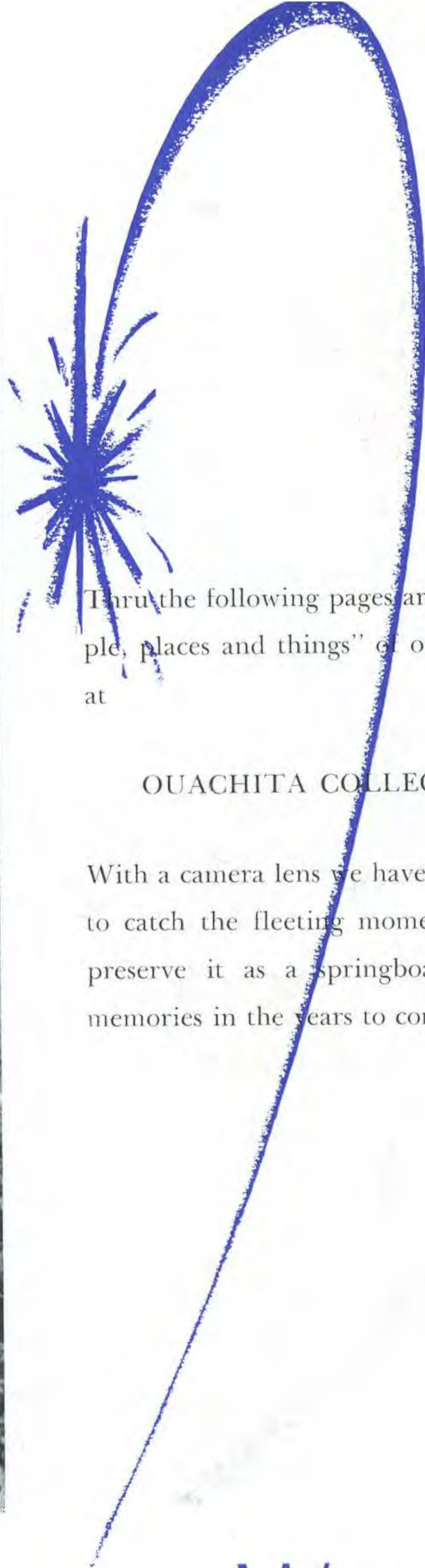
RILEY LIBRARY  
OUACHITA BAPTIST UNIVERSITY





# At Ouachita





Thru the following pages are "people, places and things" of our year at

### OUACHITA COLLEGE

With a camera lens we have sought to catch the fleeting moment and preserve it as a springboard for memories in the years to come.

# thru the Seasons, We . . .

33044





Gain . . . .





Through our churches and religious activities we are ensured of an ultimate triumph in spiritual, intellectual and spiritual development. In our appreciation for these organizations it should ever be our obligation to live up to the ideals set by them.



# Strength thru Worship . . .







*Registration day —I have fought a gallant fight —*



Gain . . . .

knowledge thru School







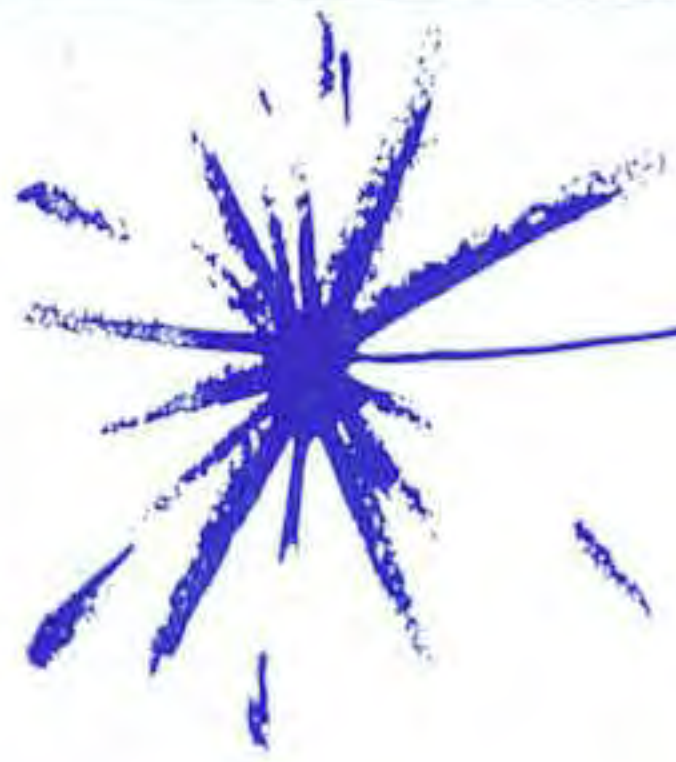
..... and thru Study







*Mary Jane dealing in  
the . . . abstract*



# Gain . . . Character



*. . . to me it sounds  
flat*



*. . . aspiring Robin  
Hoods*





*Fraternization of the Brethren*



*Mid-afternoon coke in the bookstore*

# thru Play







MEN'S  
DORM



BAILEY  
HALL



BUSINESS  
OFFICE





And  
We  
Gain  
Friends thru dorm life

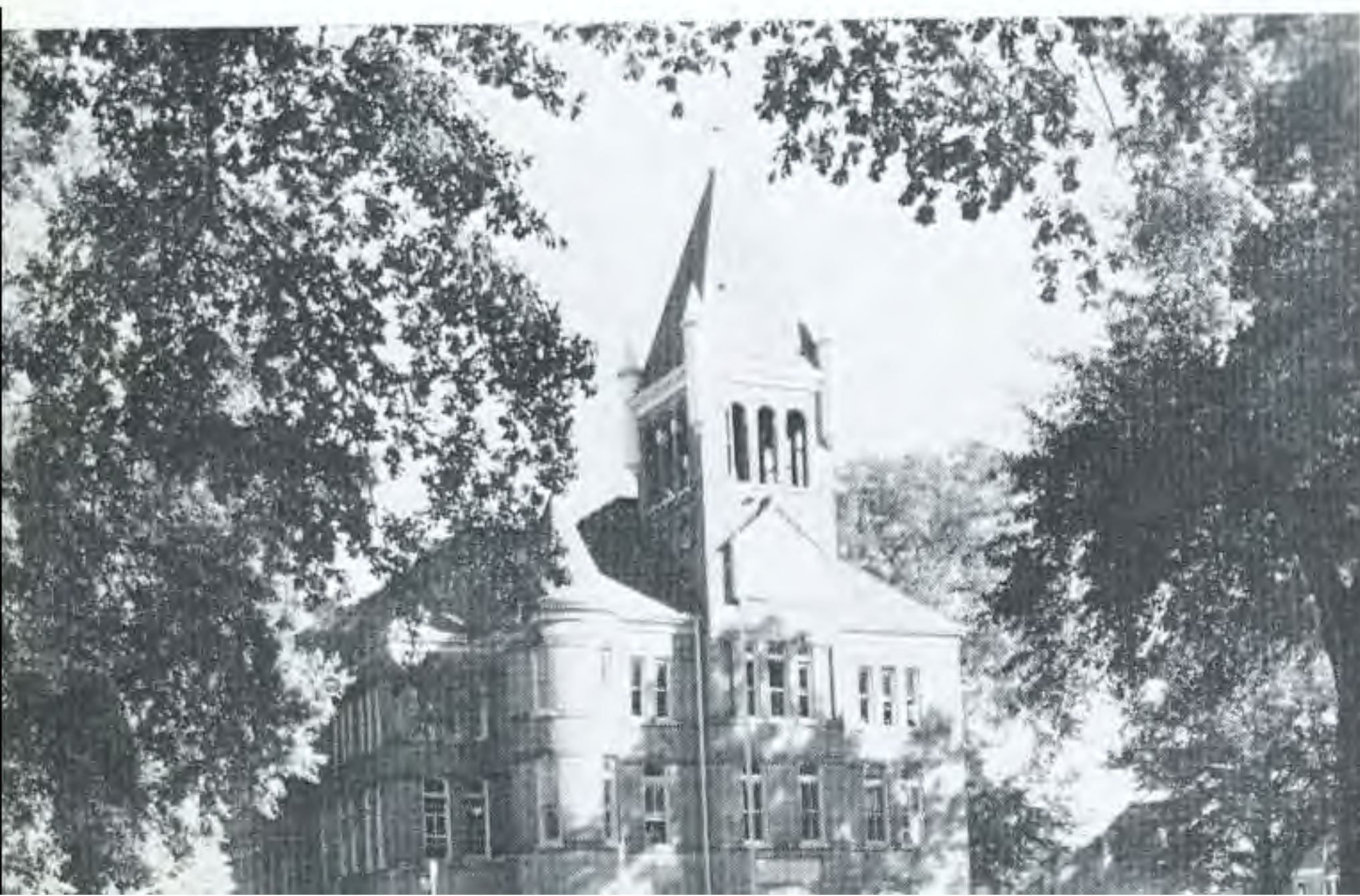
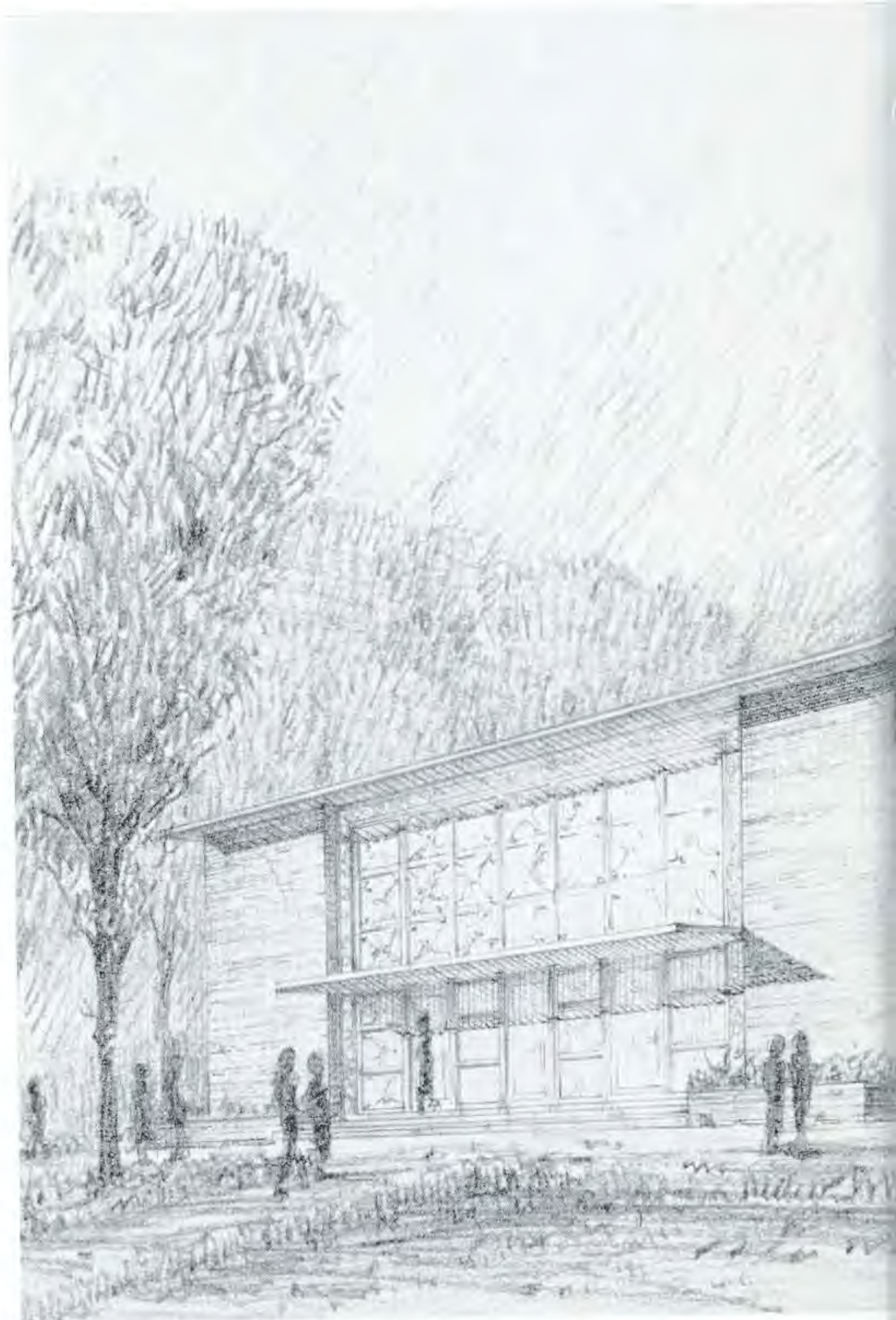




# ... are dedicated to building

Endowed with the ideal use for the present and future generations, the new library building, Riley Library, is constructed on the plan of functional architecture. All available space has been used with each department in direct communication with the others. All modern equipment conducive to library service is provided. Throughout the entire structure is an eye-appeal of modern and colorful scheme ranging from Williamsburg green—heather pink to jonquil yellow. The trend of the entire building from its modernized entrance to the offices is developed on plan for its future work.

The floor scheme includes a main reading room with a seating capacity of 220, charge desk units with map files, vertical files and complete magazine service, work rooms equipped for departmentalized service, reserve book rooms for supplementary reading, browsing and reading rooms holding new titles and the Arkansas collection, community room equipped for leisure reading, audio-visual aids, recreation and to house special collections, stack rooms with a volume capacity of 65,000 volumes on three levels and office space for the librarian and assistant librarian with an inter-communication system between all the departments.



“Ole Main” ended its career as Ouachita College administration building last May in a flame of glory on the night of graduation day after 60 years of seeing Arkansas youth come and go through its doors. Ole Main was one of the most modern buildings of its kind back in 1889 when it was built. Alumni will always have many memories attached to Ole Main and not one will ever forget the beauty of the old structure with moon shining through the tower and the trees.



a New and Better . . . .

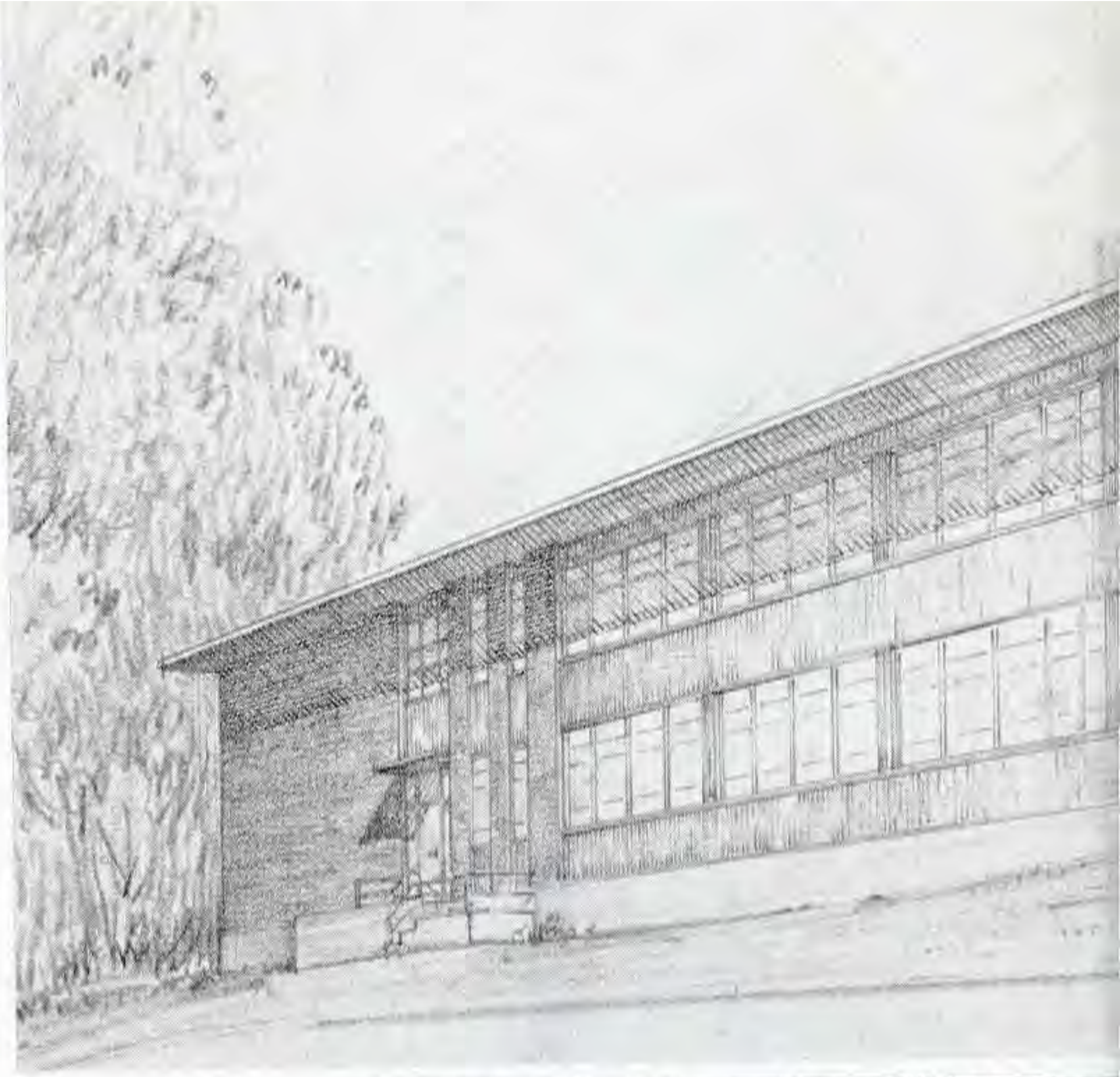


Quachita



*Below:*

STUDENT CENTER  
TEMPORARY LIBRARY  
TEMPORARY SCIENCE  
BUILDINGS







*Above:*

Architectural drawing of the  
Science building

*Below:*

DINING HALL



RILEY LIBRARY  
QUACHITA BAPTIST UNIVERSITY



# are guided by the ADMINISTRATION

## PRESIDENT

The directing force behind Ouachita College is President S. W. Eubanks, former professor of Bible and Religious Education. Under his competent leadership O.B.C. has grown at an amazing rate during the past year. Because of his successful execution of these positions and his executive ability and leadership in the religious field he is known throughout the country.

His friendliness and interest in the problems of the students has gained for him the greatest tribute that could be paid — the respect of the students of OBC.



## BUSINESS MANAGER

Because he dedicated his time this year to the rebuilding of OBC, Dale Taylor has earned the praise of every OBC student. His helpfulness, sense of honor, and keen interest in OBC have helped to make our year both profitable and useful.







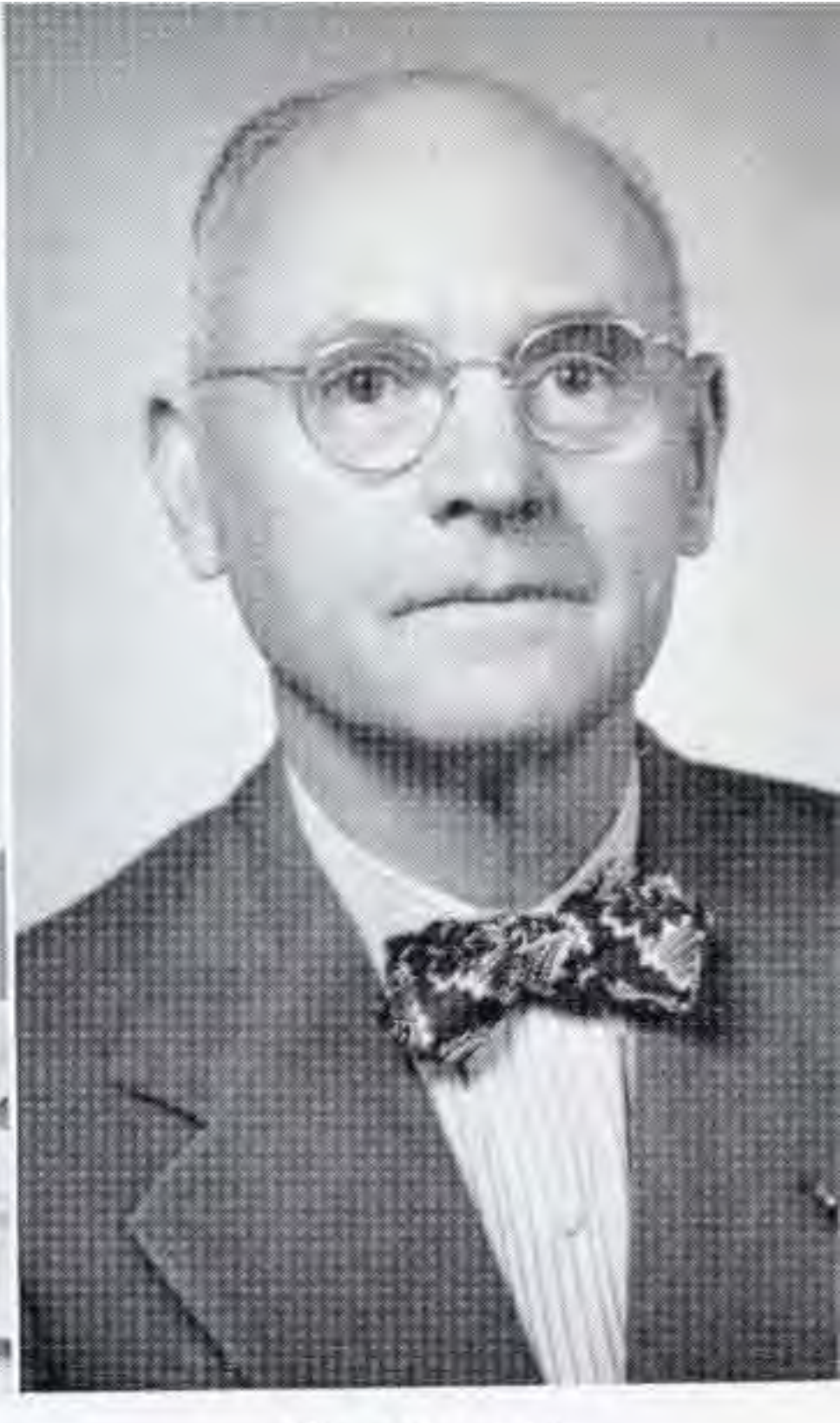
RIDDLE



McCASKILL



CRAWFORD



BLAKENEY

To help keep school on level ground there's always a few burdened with much work. "Now in this section you'll find —" are famous words of our Librarian, MISS MARGARET RIDDLE, M.A. Southern Methodist University . . . "Mr. Fix-it," NEIL McCASKILL, Ouachita alumni of 1939 takes care of the grounds and is called the grounds superintendent . . . "Now about transferring those credits" says MISS FRANCES CRAWFORD, Registrar, B.A. and B.M., Ouachita . . . Student counsellor, COLONEL JAMES BLAKENEY, D.D., always willing to bend an ear to your troubles and come back with helpful advice and assistance. "Been to England once —"

# FACULTY

To help us develop a deeper appreciation of the world. "Un momento, por favor" MISS LOIS GARDNER, M.A. University of Oklahoma, assistant professor of humanities . . . "During what period did this type of art prevail?" MISS MARY LOU MILLER, instructor in art, M.A. Columbia University and she paints well, too . . . JOSEPH REDDEN, B.A. Hardin-Simmons, instructor in journalism, "How many inches did I assign you?" . . .

Head of Math Department is DR. D. M. SEWARD, Ph.D. Duke University, professor of science (math and physics).

GARDNER

MILLER

REDDEN

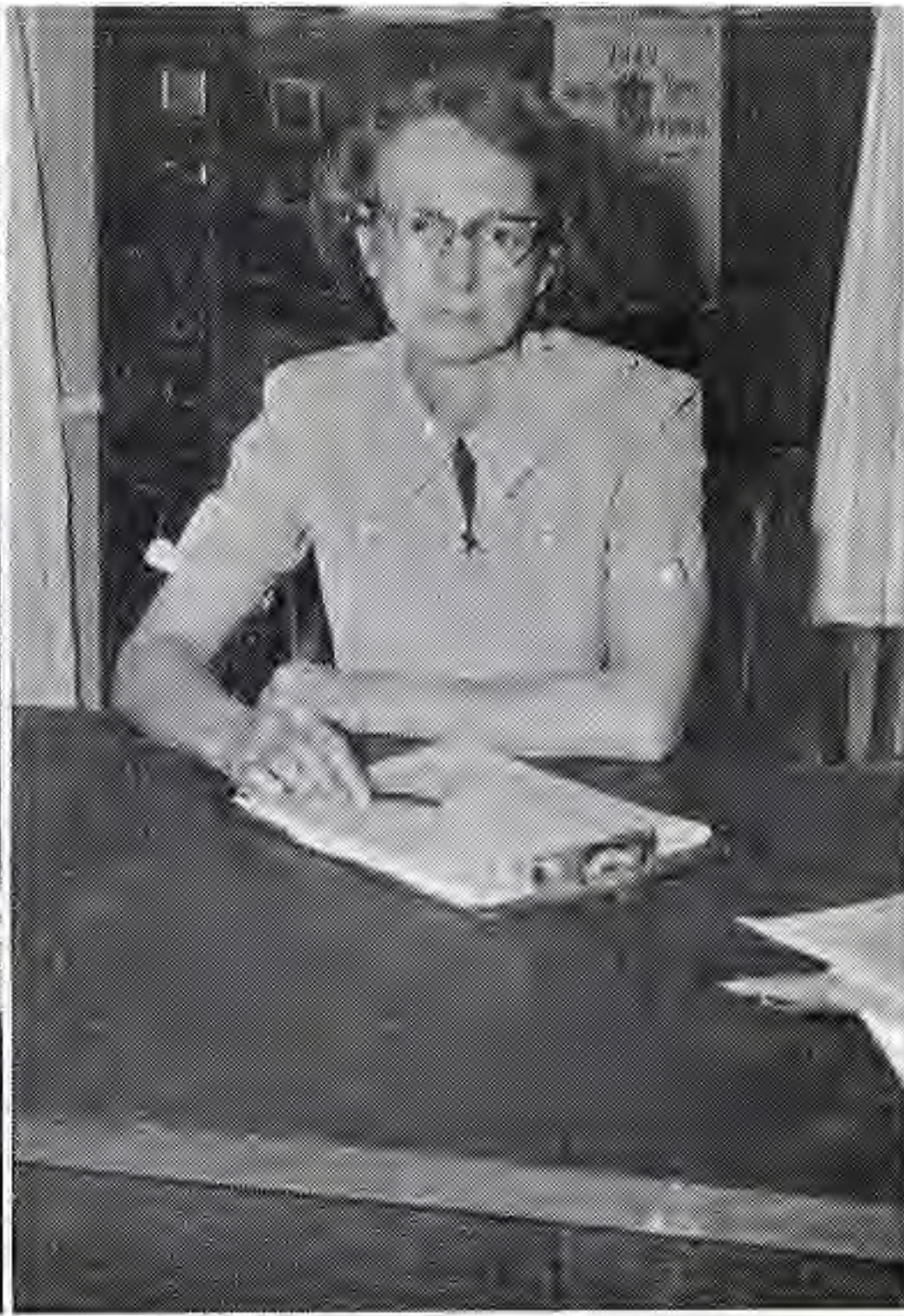
SEWARD







SPURGEON



DENTY



YEAGER



RUDOLPH

Another mathematician and sponsor of the YWA is MISS VIVIAN SPURGEON, M.A. George Peabody College, assistant professor of math . . . To keep OBC students healthy is the aim of MRS. N. W. DENTY, dietitian and MISS FRANCES YEAGER, assistant dietitian, fun to work with, bet they plot "Let's feed 'em chili tonight" . . . SPEECH to help us in a more cultured way express our thoughts—"You should have read it this way" MISS GENE RUDOLPH, head of speech department, associate professor of humanities . . .

# FACULTY

MRS. ALICE SHAW, instructor of speech, M.A. Northwestern University, if you need speech correction . . . ROBERT TAMPLIN, instructor in speech and dramatics, M.A. University of Michigan, and he has played on Broadway . . . ENGLISH Finest thoughts of the finest minds as expressed in literature. DR. VIRGIL JONES, Ph.D. Harvard, LL.D. University of Arkansas, professor of humanities . . . "I'm really not a hard teacher" MISS FAY HOLIMAN, assistant professor of humanities, M.A. University of Texas . . .

SHAW

TAMPLIN

JONES

HOLIMAN







SIMMONS



OSBORNE



BECKER



CRAWFORD

Who wrote the Iliad and the Odyssey? MISS ERMA SIMMONS, assistant professor of humanities, M.A. University of Texas . . . Wake up, class is over now! BILL OSBORNE, M.A. Peabody College, instructor in English . . . FINE ARTS To provide the opportunity for study of music as means of culture FRED BECKER, M.S.M. and M. RE. Southern Theological Seminary . . . Let's hope Vienna holds up this weekend. . . It must be the ties of CECIL RHEA CRAWFORD, professor of fine arts that makes his classes so interesting, M.M.E. University of Oklahoma . . . I wrote it myself when back in Ouachita WILLIAM MARTIN, B.M.E., instructor in band . . .

# FACULTY

MISS HELEN LYONS, M.A. George Peabody, assistant professor of fine arts (violin, orchestra, and theory) And its not a fiddle that she plays . . . That last chord was pretty, MISS MAUDE WRIGHT, M.M. Louisiana State University, assistant professor of fine arts (piano and theory) . . . How many hours did you practice; MISS VIRGINIA QUEEN, instructor in fine arts (piano and theory), candidate for M.M. American Conservatory.

MARTIN



LYONS



WRIGHT



QUEEN







DAILY



MOORE



BLACKMON



BASS

SOCIAL SCIENCE To develop a keen appreciation of the problems of the past and an insight into the future TEN POINT TEST – What is the color of Robert E. Lee's horse? DR. RALPH CUSTER DAILY, Ph.D. Indiana University, professor of history and political science . . . That peckerwood made a good debate DR. DAVID MOORE, Th.D. Southern Baptist Theological Seminary, associate professor of history . . . assistant professor of Bible, GEORGE TRUETT BLACKMON, Th.M. Southwestern Baptist Theological Seminary . . . I was left out last year PROF. EDGAR WILLIAM BASS, M.S. Oklahoma A & M College, professor of social science (business administration) . . .

# FACULTY

30 words a minute is not fast enough MISS ESTHER DIXON, assistant professor of business administration, candidate for M.A. Oklahoma A & M . . . Who was the greatest man in ancient history? MR. BOYCE DRUMMOND, M.D., University of Chicago . . . DEANS . . . MRS. LIMA COUGH, dean of women and matron of Cone-Bottoms hall . . . MRS. LAURA EVA TURNER, assistant dean of women and matron of Terral-Moore Hall and they have their troubles . . .

DIXON



DRUMMOND



COUGH



TURNER







TEDFORD



BRADSHAW



KEMP



DAVIS

Now boys, and he too has trouble. DEAN L. T. TEDFORD, Dean of men Th.M. Southern Baptist Theological Seminary . . . ATHLETICS . . . WESLEY WALKER BRADSHAW M.A. Baylor University, head coach and did he work with the Tigers for Ouachita . . . CECIL KEMP, B.A. Ouachita, assistant coach, he, too, gave a lot . . . What's that noise in the back of the room? MRS. BLANCHE DAVIS, M.S.E. University of Southern California . . .

# FACULTY

COACH JAMES SCHULTZ, M.A. University of Iowa, director of men's physical education . . . MRS. HAZEL THOMAS, instructor in home economics, B.S. Arkansas State Teachers College, There's an article in the Reader's Digest . . . Who's upstairs with the babies? MRS. TOM JONES, B.A. Louisiana Polytechnic College, instructor in home economics . . . MISS JUANITA FORD, M.S. University of Texas, associate professor of science (home economics) . . .

SCHULTZ



THOMAS



JONES



FORD







GILLILAND



PROVINE



MUNDIE



STEWART

C-6 H-5 CH<sub>3</sub> (No<sub>2</sub>)<sub>3</sub> (T.N.T. to you) MISS MARIE GILLILAND, Science, associate professor of chemistry, M.A. University of Kansas . . . DR. E. A. PROVINE, professor of science (chemistry) Ph.D. Ohio State University strong silent type, he doesn't talk much . . . DR. J. RYLAND MUNDIE, Ph.D. University of Virginia, professor of science (biology) Oh! you don't know! . . . What do you call that bone? OWEN STEWART, M.S. George Peabody College, associate professor of biology . . .

# FACULTY

To help us build a more progressive college, DEAN H. A. HASWELL has begun plans for revision of the curriculum and complete study of the philosophy and objectives of Ouachita. Dean Haswell was assistant dean at the University of Missouri Liberal Arts College before joining the Ouachita administration at semester. Haswell has taught in both elementary and high school, been instructor in Audio-Visual aids and Dean at Southwest Baptist. Dean Haswell is a member of the Alpha Phi Zeta, national sociology honor society, the NEA, and Who's Who in American Education. He now holds a Ph.D. from the University of Missouri.

*Just another fish story . . . I am a gentleman and a scholar . . . with Mrs. Haswell*

