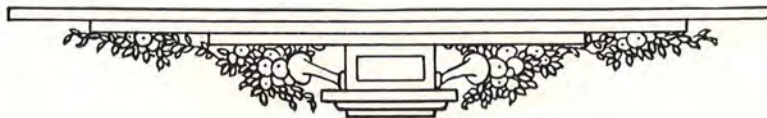
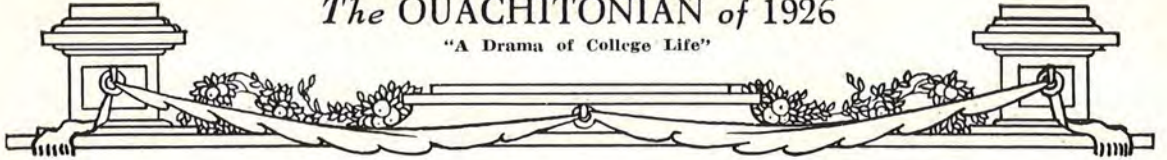


The Cast of Characters

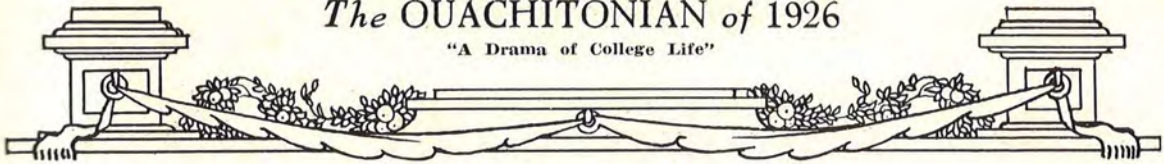


The OUACHITONIAN of 1926

"A Drama of College Life"







Senior Class

THOMAS H. COMPERE, A.B.

HAMBURG, ARKANSAS

"Tweet"

*Philomathean Literary Society*

"The service and the loyalty I owe,  
In doing it, pays itself."

Winner Philomathean New Man's Contest, '23; Sons' and Daughters' Association; Rifle Team, '23, '24, '25; Editor Signal, '25; President Philomathean, '25; President Bryan S. S. Class, '25; President Senior Class, '26; Second Lieutenant, R. O. T. C., '26.

MARY BERTHE

*Diplomas in Voice and Expression*

LITTLE ROCK, ARKANSAS

"Mary"

*Corinnean Literary Society*

"None knew her but to love her,  
None named her but to praise."

Vice-President Freshman Class, '24; Vice-President Corinnean, '25; Secretary Little Rock Club, '25; Chorister Y. W. A., '25; Treasurer Senior Class, '26.

MURIEL GODBEHERE, A.B.

POTEAU, OKLAHOMA

"Muriel"

*Alpha Kappa Literary Society*

"Her face is fair, her heart is true,  
As spotless as she's bonnie."

Signal Staff, '24, '25, '26; Secretary Junior Class, '25; Secretary Alpha Kappa, '25; Vice-President Y. W. A., '25; Vice-President B. Y. P. U., '25; Vice-President Senior Class, '26; President Alpha Kappa, '26; Ouachitonian Staff, '26.

CHARLES FRANKLIN ROUNTON, JR.

A.B.

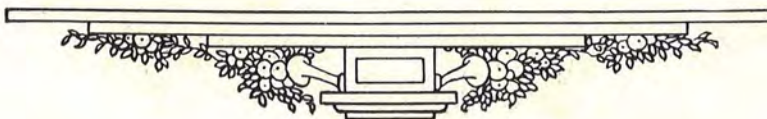
HOPE, ARKANSAS

"Charley"

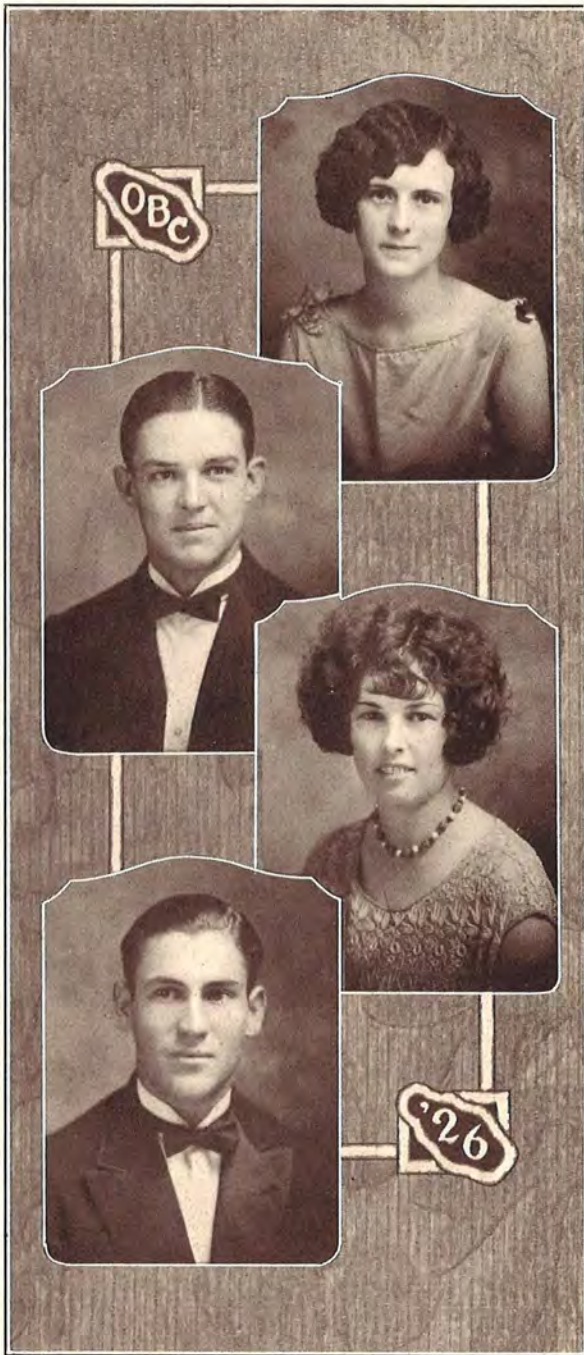
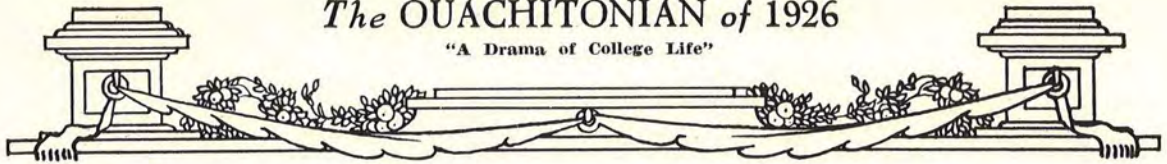
*Hermesian Literary Society*

"Give thy thoughts no tongue."

Sons' and Daughters' Association; Rifle Team, '23, '24, '25; Second Lieutenant R.-O. T. C., '26; Secretary Senior Class, '26; Berean S. S. Class.







## Senior Class

ALMA THRASHER, A.B.

*Diploma in Expression*

POTEAU, OKLAHOMA

"Alma"

*Corinnean Literary Society*

"But screw your courage to the sticking-place,  
And we'll not fail."

Vice-President Sons and Daughters, '26; Treasurer B. Y. P. U., '26; Treasurer Y. W. A., '26.

CLEO ZACHARIAH SHUGART, A.B.

ARKADELPHIA, ARKANSAS

"Shug"

*Hermesian Literary Society*

"There's something in his looks  
Which marks a very learned man."

Tigerettes, '22; Varsity Football, '23, '24, '25; Honor Company, '24; Second Lieutenant R. O. T. C., Company D, '25; Captain R. O. T. C., Company A, '26.

MARJORIE McDONALD, A.B.

SMACKOVER, ARKANSAS

"Marg"

*Corinnean Literary Society*

"Take these again, for to the noble mind  
Rich gifts wax poor when the givers prove  
unkind."

Treasurer Corinnean, '24; Kewpie, '25, '26; Maid to Football Sponsor, '25; Vice-President Bryan S. S. Class, '26.

WILLIAM MOREHEAD, A.B.

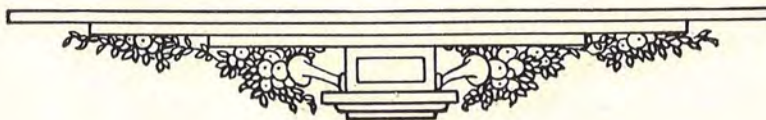
FRIENDSHIP, ARKANSAS

"Bill"

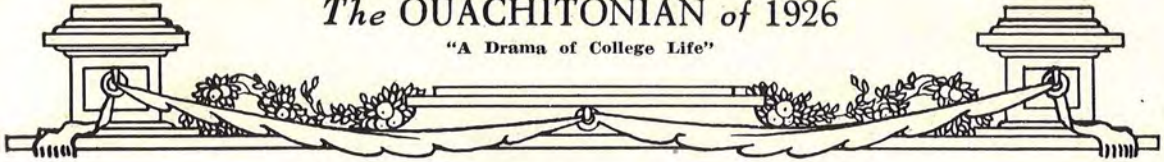
*Hermesian Literary Society*

"The fairest shepherd on our green,  
A love for any lady."

Baseball, '23, '24, '25; Basketball, '25; Second Lieutenant R. O. T. C., '26.







Senior Class

REBA CLARK

*Diploma in Piano*

STRONG, ARKANSAS

"Reba"

*Corinnean Literary Society*

"And in her smile was health and a right good welcome."

Kewpie, '25, '26; Pianist Pep Club, '24, '25; Pianist Corinnean, '24, '25; Maid to Football Sponsor, '23, '25; Secretary-Treasurer Sons and Daughters, '24; Secretary-Treasurer Riley Bible Class, '25; Feature Section Ouachitonian, '26.

MERVING E. PERRY, A.B.

DERMOTT, ARKANSAS

"Pewee"

*Hermesian Literary Society*

"... a mighty man is he,  
With large and sinewy hands;  
And the muscles of his brawny arms  
Are strong as iron bands."

Varsity Football, '22, '23, '24, '25; Captain Tigers, '25; Baseball, '23, '24, '25, '26; Feature Section Ouachitonian, '25; First Lieutenant R. O. T. C., Company A, '26.

DELLE COURSON, A.B.

*Diploma in Piano*

CROSSETT, ARKANSAS

"Delle"

*Corinnean Literary Society*

"While we shut the gate upon one wooer,  
another knocks at the door."

Kewpie, '25, '26; Maid to Football Sponsor, '25.

CAREY SELPH, A.B.

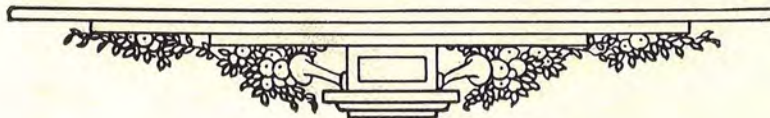
ARKADELPHIA, ARKANSAS

"Scotty"

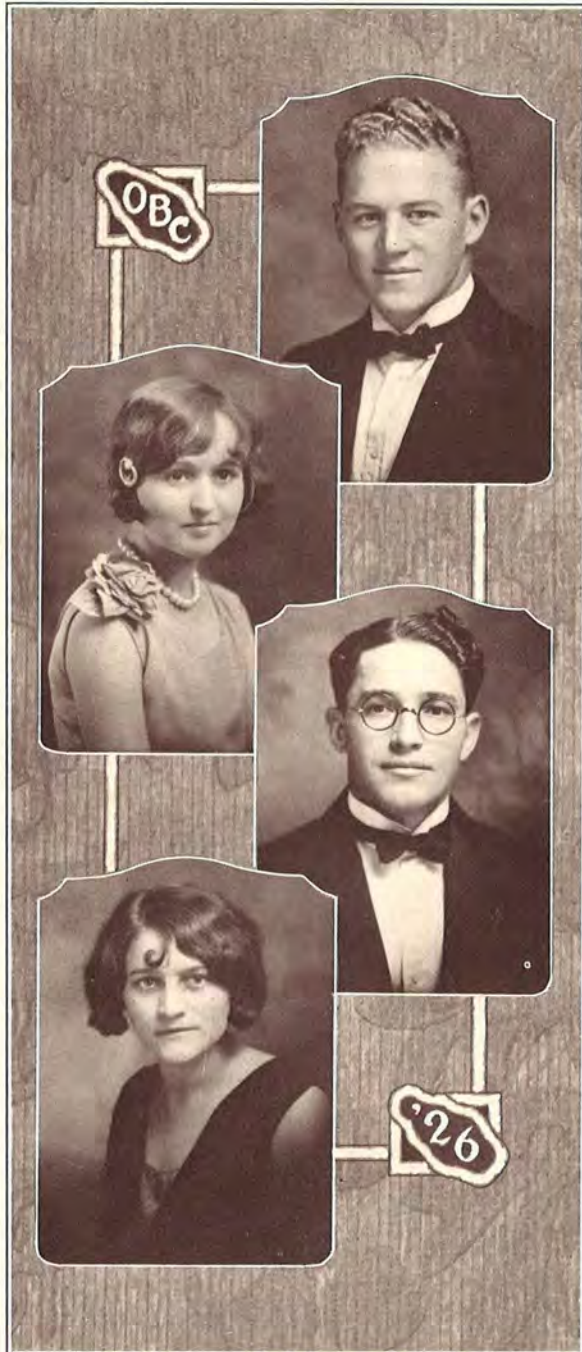
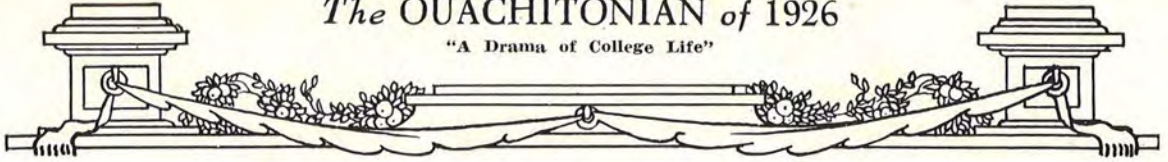
*Hermesian Literary Society*

"None but himself can be his parallel."

Varsity Football, '22, '23, '24, '25; All-State Quarterback, '23, '24, '25; Baseball, '23, '24, '25; Basketball, '25; Feature Section Ouachitonian, '25; Vice-President Hermesian, '25; Second Lieutenant R. O. T. C., Company B, '25; Captain R. O. T. C., Company B, '26; Berean S. S. Class.







## Senior Class

JOHN HACKETT ELLIOTT, A.B.

ARKADELPHIA, ARKANSAS

"Big John"

*Hermesian Literary Society*

"Was never prince so faithful and so faire,  
Was never prince so meeke and debonaire."

Tigerettes, '22, '23, '24; Varsity Football, '25;  
Track, '23, '24, '25; Rifle Team, '23, '24, '25;  
President B. Y. P. U., '23, '24; Vice-President  
Hermesian, '25; Art Editor Ouachitonian, '25;  
President 400-Club, '25; Editor Ouachitonian,  
'26; Feature Section Ouachitonian, '26; Honor  
Company, '24; First Lieutenant '25, Captain '26,  
R. O. T. C., Company C.

MADGE WADE

*Diploma in Organ*

TEXARKANA, ARKANSAS

"Willie"

*Corinnean Literary Society*

"For every one of her happy smiles,  
The world whirls on its way with less care."

Sons' and Daughters' Association; President S.  
S. Class, '23; Vice-President Corinnean, '26; Or-  
chestra, '25, '26; French Club, '26.

JOHN L. RIFFEY, A.B.

*Diploma in Expression*

WHEATLEY, ARKANSAS

"Major Jawn"

*Philomathean Literary Society*

"He most lives, who thinks most, feels noblest,  
acts the best."

President Prep Class, '22; Debating Team, '22,  
'23, '24, '25; Winner Hall Oratorical Contest,  
'23; President Pi Kappa Delta, '25; President  
Volunteer Band, '25; President Philomathean,  
'25; Philomathean Orator, '26; President Min-  
isterial Association, '25; Rifle Team, '23, '24,  
'25; Major, R. O. T. C., '26.

MARGARET ELIZABETH JONES

*Diploma in Piano*

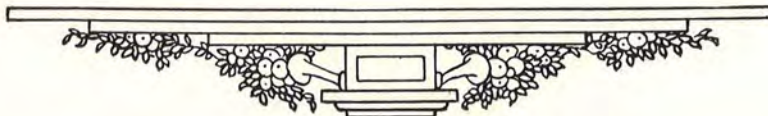
PRESCOTT, ARKANSAS

"Meg"

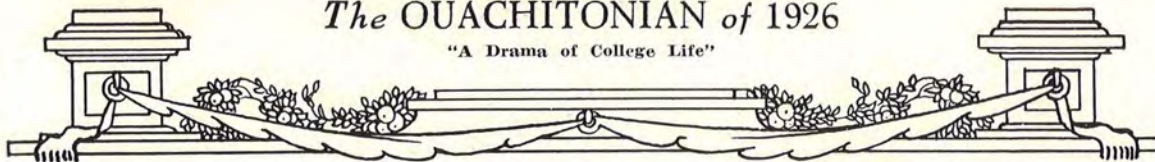
*Corinnean Literary Society*

"She is so free, so kind, so apt, so blessed  
a disposition, that she holds it a vice in her  
goodness, not to do more than she is re-  
quested."

Orchestra, '24, '25; Jazz Orchestra, '25; E. E.  
E. Club; Secretary Whitehouse Bible Class, '25.







## Senior Class

J. BRYAN RICHIE, A.B.

BLEVINS, ARKANSAS

"Bryan"

*Hermesian Literary Society*

"His words are bonds, his oaths are oracles,  
His love sincere, his thoughts immaculate,  
His heart as far from fraud as heaven from earth."

President Baraca S. S. Class, '24; Staff Sergeant R. O. T. C., '26; President Hermesian, '26; Hermesian Orator, '26.

ESTHER GARLAND, A.B.

HOPE, ARKANSAS

"Esther"

*Alpha Kappa Literary Society*

"For as truth she has such a face and such  
a mien

As to be loved needs only to be seen."

Secretary Volunteer Band, '24, '25; Vice-President Volunteer Band, '25.

ROBERT LEE MCKNIGHT, A.B.

BRINKLEY, ARKANSAS

"Bob"

*Philomathean Literary Society*

"He bears himself like a portly gentleman;  
And, to say truth, Verona brags of him,  
To be a virtuous and well govern'd youth."

RUTH WILSON HALL, A.B.

*Diploma in Piano*

LITTLE ROCK, ARKANSAS

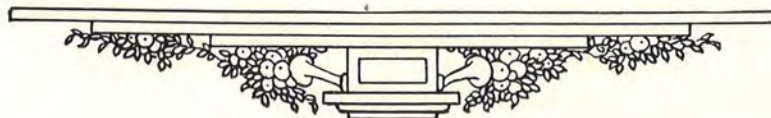
"Rufus"

*Corinnean Literary Society*

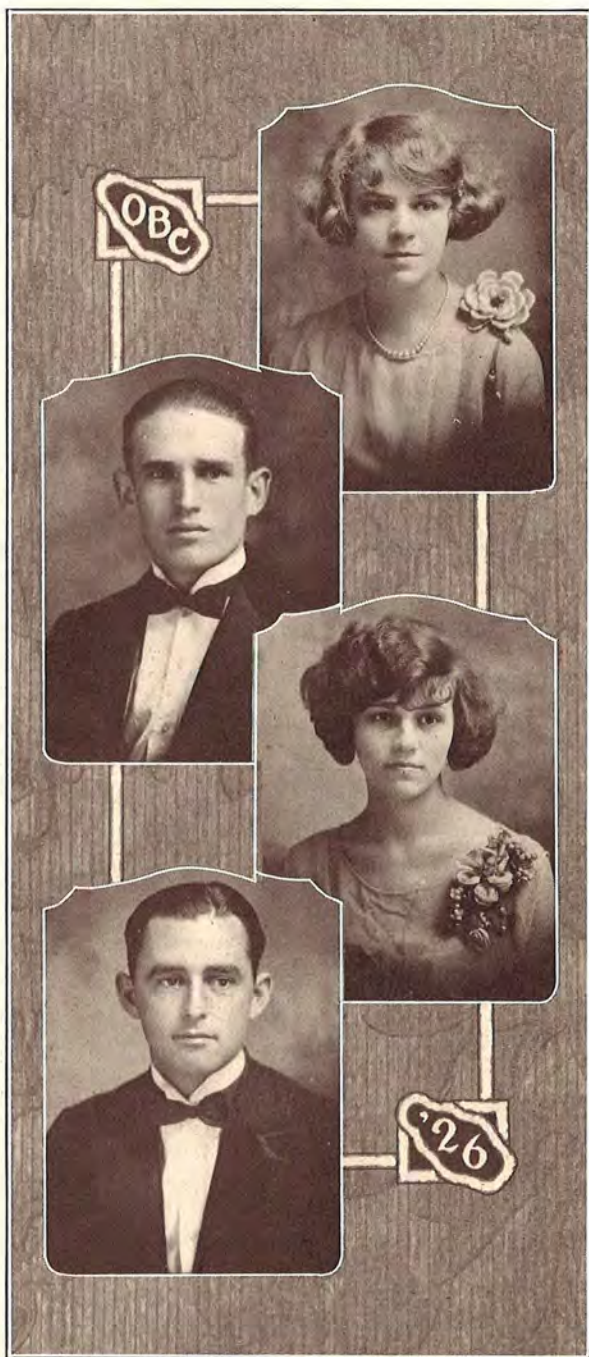
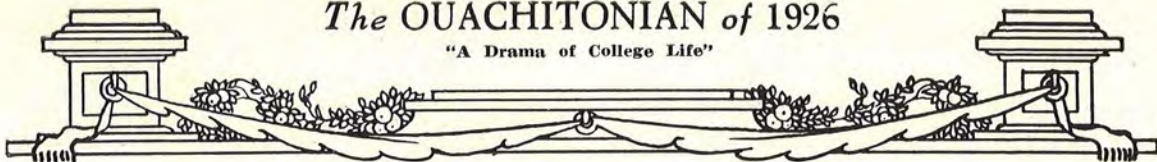
"It is not mirth, for mirth she is too still;  
It is not wit, which leaves the heart more  
chill,  
But that continuous sweetness which with  
ease

Please all around it with the wish to please."

Little Rock Club.







## Senior Class

BESS COMPERE, A.B.

LITTLE ROCK, ARKANSAS

"Cousin"

*Alpha Kappa Literary Society*

"Flower o' the broom,  
Take away love, and our earth is a tomb."

Sons' and Daughters' Association; B. O. P. Club; Little Rock Club; President Alpha Kappa, '26; Alpha Kappa Essayist, '25; Secretary Alpha Kappa, '26; Signal Staff, '26; Sponsor Company C, '26; Ouachitonian Staff, '26.

OTIS EARL DAWSON, A.B.

WRIGHT CITY, OKLAHOMA

"Charley"

*Philomathean Literary Society*

"A tall, good-natured chap and a friend to all."

Rifle Team, '24, '25, '26; Second Lieutenant R. O. T. C., '25; President Sons and Daughters, '26; President Philomathean, '26; President Riley Bible Class, '26; President B. Y. P. U., '24; Business Manager Ouachitonian, '26; President Berean S. S. Class, '25; A. R. C. Club; Captain R. O. T. C., '26, Company C.

HAZEL LILE, A.B.

STEPHENS, ARKANSAS

"Hay"

*Alpha Kappa Literary Society*

"That Emelye, that fairer was to sene  
Than is the lillie upon his stalke grene."

Secretary Alpha Kappa, '25; Vice-President Alpha Kappa, '26; President Alpha Kappa, '26; Sons' and Daughters' Association; Signal Staff, '26; Ouachitonian Staff, '26

NOEL PURDY TOMLINSON, A.B.

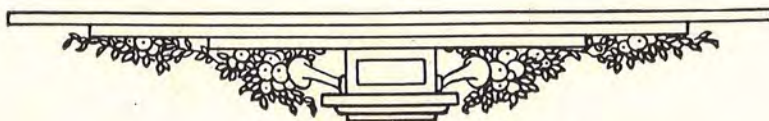
FORDYCE, ARKANSAS

"Tommy"

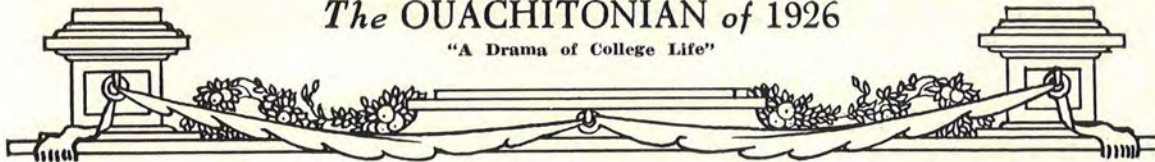
*Hermesian Literary Society*

"His friendship is constant in all other things,  
Save in the office and affairs of love."

Baseball, '24, '25, '26; President Hermesian, '26; Winner Hermesian New Man's Contest, '23; Berean S. S. Class; Athletic Editor Signal, '25; Second Lieutenant R. O. T. C., '26.







## Senior Class

KATHARINE PADGETT

*Diploma in Voice*

BATESVILLE, ARKANSAS

"K. P."

*Corinnean Literary Society*

"Grace was in all her steps, heaven in her eye,  
In every gesture dignity and love."

Arkansas College, '22, '23; L'Etoile Society, '22, '23; Vice-President Corinnean, '25; President Corinnean, '26; Vice-President Y. W. A., '25; Y. W. A. Cabinet, '25, '26; President S. S. Class, '24.

LOUIE MARSHALL WILLIS, A.B.

MAGNOLIA, ARKANSAS

"Red"

*Philomathean Literary Society*

"Though love be sweet, learn this of me,  
No sweet love but honesty."

Band, '23, '24, '25, '26; Glee Club; Orchestra; Assistant Business Manager Signal, '24; Business Manager Signal, '25; President Junior Class, '25; Vice-President Philomathean, '26; Captain R. O. T. C., '26.

VIRGINIA MAE BRANNAN, A.B.

BATESVILLE, ARKANSAS

"Red"

*Corinnean Literary Society*

"Those about her  
From her shall read the perfect ways of  
honor."

Yell Leader Arkansas College, '22, '23; Vice-President Alpha Phi, '24; Treasurer Corinnean, '25; Yell Leader Corinnean, '25; D 1-2 D, '24, '25.

TURNER E. THOMASSON, A.B.

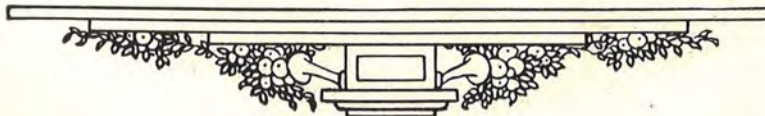
ARKADELPHIA, ARKANSAS

"Big Tim"

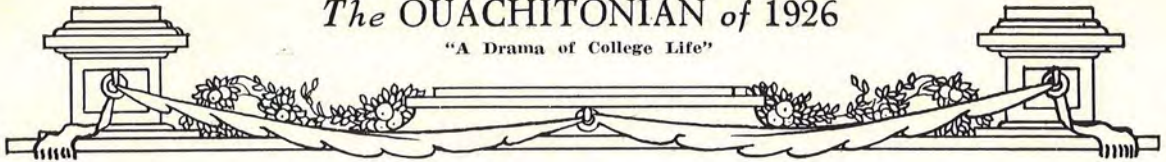
*Hermesian Literary Society*

"What a piece of work is man, the paragon  
of animals."

Tigerettes, '22, '23; Rifle Team, '23, '24, '25; Sons' and Daughters' Association; First Lieutenant R. O. T. C., '26.







## Senior Class

MARY HORTENSE McCORKLE

*Diploma in Voice*

HOPE, ARKANSAS

"Hortense"

*Corinnean Literary Society*

"Then happy I who love and am beloved."

Kewpie, '25, '26; Signal Staff, '22; Westmoorland College, San Antonio, Texas, '23; Secretary-Treasurer Sons and Daughters, '25; Football Sponsor, '25; Feature Section Ouachitonian, '26; Secretary Bryan Bible Class, '25; Y. W. A. Reporter, '25; Sponsor Company A, '26.

JOSEPH E. DUMAS, A.B.

ELDORADO, ARKANSAS

"Jodie"

*Hermesian Literary Society*

"Thy life is thine to make or mar,  
To flicker feebly, or soar, a star."

Secretary Hermesian, '23, '24; Vice-President and Secretary Baraca S. S. Class; Coleman Bible Class; President Anti-Ricket Club, '23; Rifle Team, '22, '23.

KATE MORENE DUMAS, A.B.

ELDORADO, ARKANSAS

"Morene"

*Corinnean Literary Society*

"Youth treads on flowers where'er he goes,  
And finds on every thorn a rose."

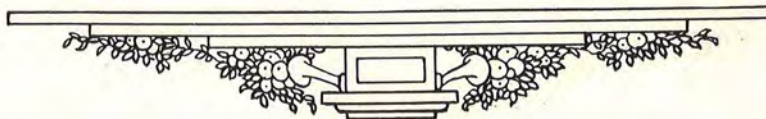
Kewpie, '25, '26; Kewpie Chief, '26; Feature Section Ouachitonian, '25; President Corinnean, '26; President Y. W. A., '25; Maid to Football Sponsor, '25; Associate Editor Signal, '25; Sponsor Company B, '26.

ALVA C. TOBEY, A.B.

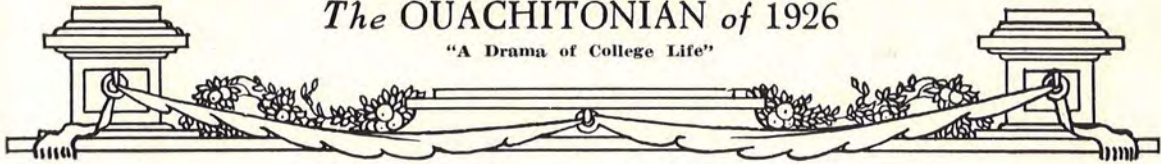
ARKADELPHIA, ARKANSAS

"BobeY"

"Nature is fine in love, and where 'tis fine it sends some precious instance of itself after the thing it loves."







Senior Class

ELOISE THOMPSON

*Diploma in Art*

LITTLE ROCK, ARKANSAS

"Eloise"

*Corinnean Literary Society*

"Faithful, gentle, good,  
Bearing the rose of womanhood."

Little Rock Club.

ALVIS BERNARD COBB, A.B.

KEO, ARKANSAS

"Bo"

*Hermesian Literary Society*

"The radiance of his life is good to look upon."

President Baraca S. S. Class, '25; Vice-President Hermesian, '25; President Hermesian, '26; President Coleman Bible Class, '26; Assistant Business Manager Signal, '24; Business Manager Signal, '25; Sons' and Daughters' Association; First Lieutenant R. O. T. C., Company B, '26.

NELLIE BLACKWELL, A.B.

HEAVENER, OKLAHOMA

"Nellie"

*Corinnean Literary Society*

"And my whole soul revolves, the cup runs over,  
The world and life's too big to pass for a dream."

Kewpie, '23, '24, '25, '26; Maid to Football Sponsor, '25.

ALEXANDER MARVIN GREEN, A.B.

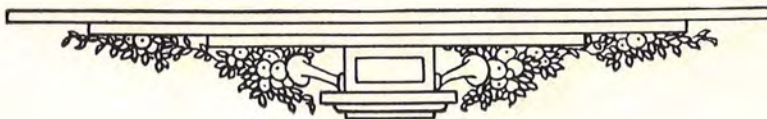
STEPHENS, ARKANSAS

"Grandma"

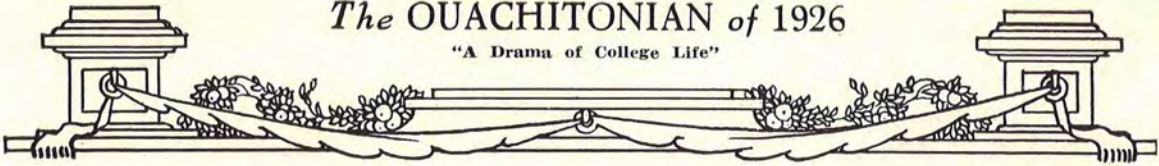
*Philomathean Literary Society*

"It's the steady, quiet, plodding ones  
Who win in the lifelong race."

Vice-President Philomathean, '25, '26; Vice-President Pre-Med Club, '24; President Pre-Med Club, '25; President B. Y. P. U., '24; Vice-President Baraca, '25; Instructor in Laboratory, Science Department, '24, '25, '26; Second Lieutenant R. O. T. C., Morale Officer, '25; Company B, '26.







Senior Class

EVERETT WILLIAM MILNER, A.B.

HICKORY PLAINS, ARKANSAS

"Von Hindenburg"

*Philomathean Literary Society*

"The words which thou hast utter'd  
Are of thy soul a part,  
And the good seed thou hast scatter'd  
Is springing from the heart."

President Philomathean, '25; Captain R. O. T. C., Company B; Honor Company, '25; President Ministerial Association, '25; Rifle Team, '25.

GLADYS WALLINGSFORD, A.B.

ARKADELPHIA, ARKANSAS

"Gladys"

*Alpha Kappa Literary Society*

"Character is the basis of happiness, and happiness is the sanction of character."

GARRETT A. KEELING, A.B.

ARKADELPHIA, ARKANSAS

"Garrett"

*Philomathean Literary Society*

"His life was gentle; and the elements so mixed in him, that nature might stand up, And say to all the world—This is a man!"

President Ministerial Association, '26.

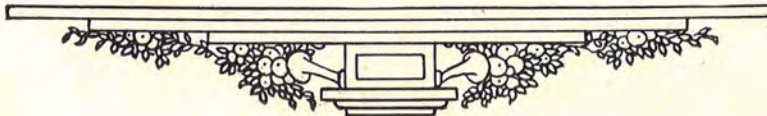
FLORENCE TOBEY, A.B.

ARKADELPHIA, ARKANSAS

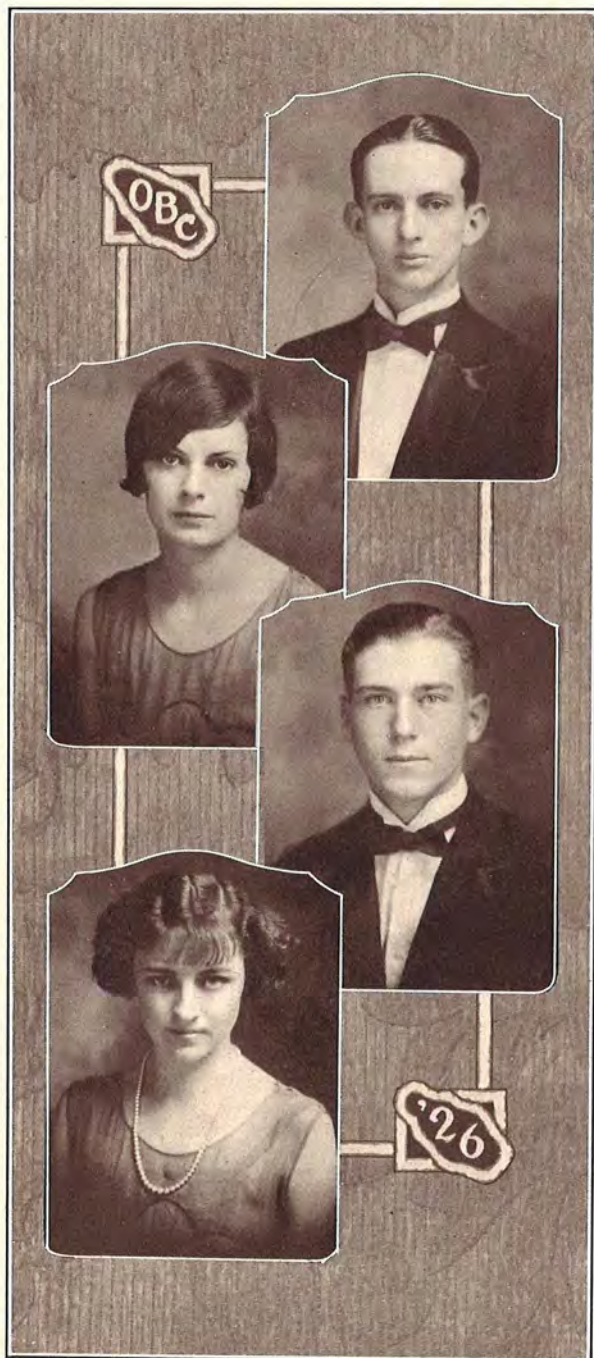
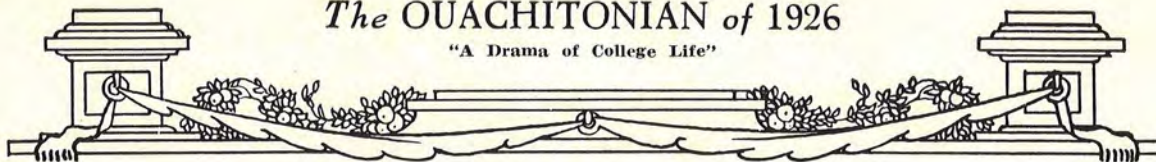
"Flo"

*Alpha Kappa Literary Society*

"Her generosity is the investment from which we clip the coupons of happiness."







## Senior Class

JAMES L. SLOAN, A.B.

ARKADELPHIA, ARKANSAS

"Andy"

*Hermesian Literary Society*

"They that are rich in words discover  
That they are poor in that which makes a  
lover."

Pi Kappa Delta; President Hermesian, '26;  
Hermesian Orator, '25; Vice-President Pi Kap-  
pa Delta, '26; First Lieutenant R. O. T. C.,  
Company C, '26; Debating Team, '23, '24, '25,  
'26.

ESSIE MILDRED GRAVES, A.B.

*Diploma in Expression*

ARKADELPHIA, ARKANSAS

"Essie"

*Corinnean Literary Society*

"To me, fair friend, you never can be old,  
For as you were when first your eye, I eyed,  
Such seems your beauty still."

President Corinnean, '26.

LEWIS SAMFORD PEARCE, A.B.

ARKADELPHIA, ARKANSAS

"Lewis"

*Hermesian Literary Society*

"Sweet are the thoughts that savor of content;  
The quiet mind is richer than a crown."

Berean S. S. Class; Sons' and Daughters' Asso-  
ciation; Rifle Team, '24, '25, '26; First Lieu-  
tenant R. O. T. C., Company B, '26.

MARGARET ELIZABETH HOLLOWAY,  
A.B.

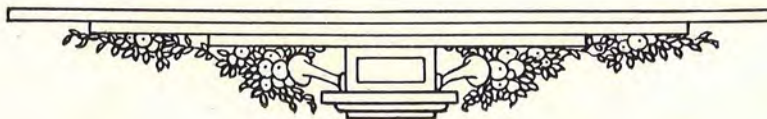
*Diploma in Piano*

ARKADELPHIA, ARKANSAS

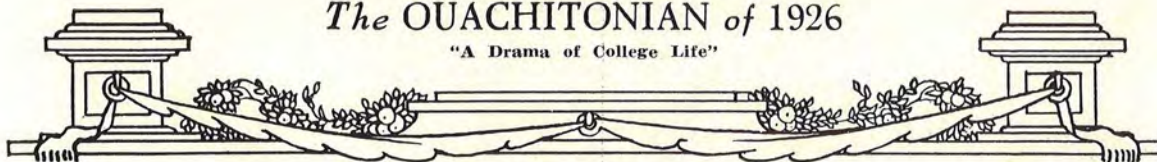
"Mac"

*Corinnean Literary Society*

"Dark is the world where your light shined  
never,  
Well is he borne that may behold you ever."







Senior Class

JOSEPH ANDERSON SLOAN, A.B.

ARKADELPHIA, ARKANSAS

"Chester"

*Hermesian Literary Society*

"A merry heart goes all the day."

Ouachitonian Staff, '25; Second Lieutenant  
R. O. T. C., Company A, '26.

MINNIE RENE MEADOR

*Diploma in Expression*

ARKADELPHIA, ARKANSAS

"Minnie Please"

*Alpha Kappa Literary Society*

"Never more apart you found  
Her, he throned, from him, she crowned."

Vice-President Alpha Kappa, '25; Vice-President  
B. Y. P. U., '24; Secretary B. Y. P. U., '25.

YATES GRANDY POPE, A.B.

ARKADELPHIA, ARKANSAS

"Pope"

*Hermesian Literary Society*

"Honor is the chief content  
That to man in life is lent."

Vice-President Berean S. S. Class, '24; Rifle  
Team, '24, '25; Second Lieutenant R. O. T. C.,  
Company C, '26.

EDYTHE WHIPPLE, A.B.

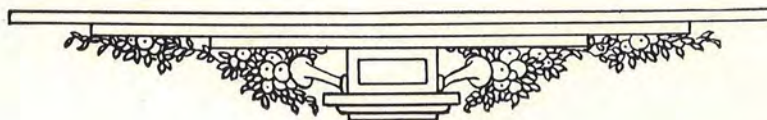
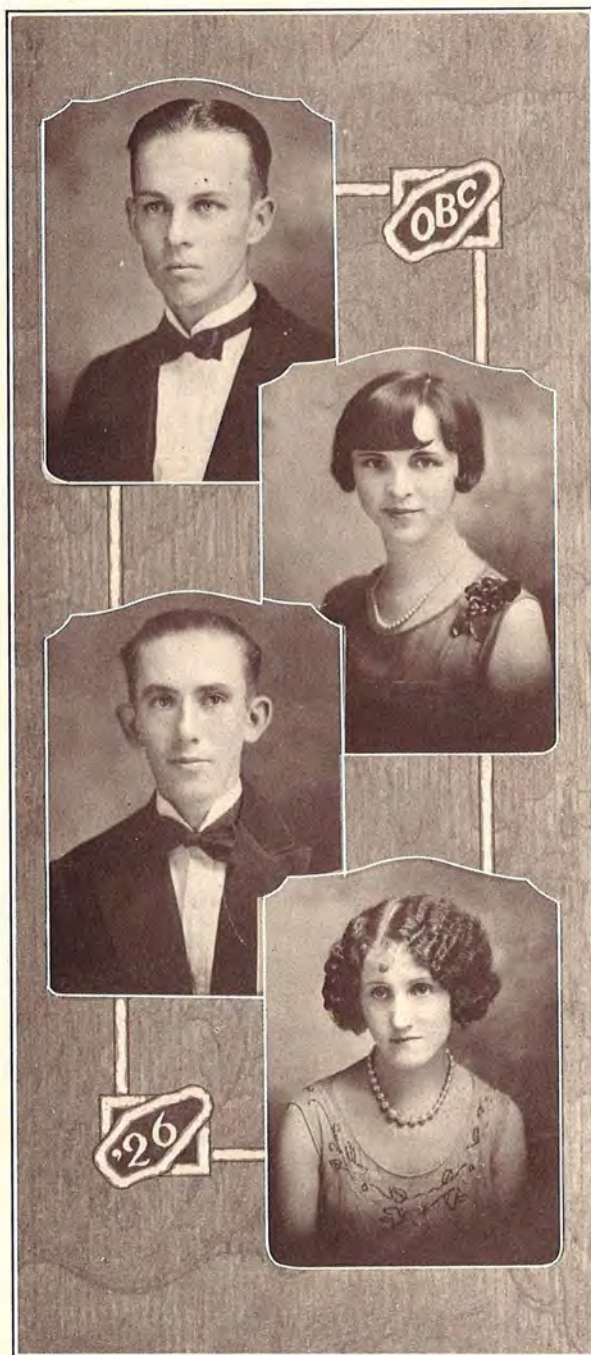
ARKADELPHIA, ARKANSAS

"Edythe"

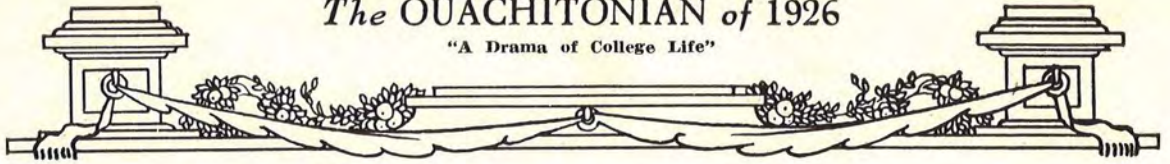
*Alpha Kappa Literary Society*

"She is dear, she is sweet, she is lovely to  
meet;

She is nice, she is kind, no fault can we find."







## Senior Class

SUSIE LEE BEASLEY

*Diplomas in Piano and Organ*

LEWISVILLE, ARKANSAS

"Sue"

*Alpha Kappa Literary Society*

"She knew such harmony alone  
Could hold all heaven and earth in happier  
union."

WARREN S. RILEY, A.B.

ELDORADO, ARKANSAS

"Riley"

*Philomathean Literary Society*

"'Tis man's pride,  
His highest, worthiest, noblest boast,  
The privilege he prizes most,  
To stand by helpless woman's side."

Vice-President Philomathean, '26; Pre-Med  
Club; French Club; Glee Club; First Lieutenant  
R. O. T. C.; Adjutant, '26.

DONNIE LUCILE HOLIMAN, A.B.

LITTLE ROCK, ARKANSAS

"Pulaski"

*Corinnean Literary Society*

"In felowship wel coude she laughe and  
carpe

Of remedies of love she knew perchance,  
For she coude of that art the olde daunce."

President Corinnean, '26; President Sons and  
Daughters, '25; Vice-President Little Rock Club,  
'26; Sponsor Company D, '24.

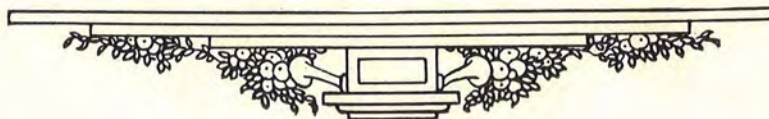
JOHN G. DILLON, A.B.

FORREST CITY, ARKANSAS

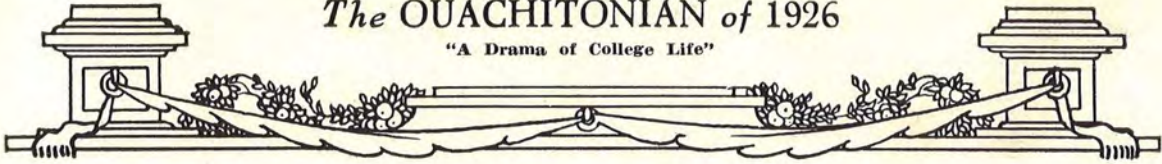
"General"

*Hermesian Literary Society*

"'Tis the soldier's life  
To have their balmy slumbers waked with  
strife."







Senior Class

HOPE ELIZABETH HARRINGTON, A.B.

*Diploma in Expression*

TEXARKANA, ARKANSAS

"Hope"

*Corinnean Literary Society*

"Men may come and men may go,  
But I go on forever."

Ouachitonian Staff, '26; Signal Staff, '25;  
Sponsor Company B, '25.

BOYD ORVILLE BAKER, A.B.

RISON, ARKANSAS

"Bake"

*Philomathean Literary Society*

"He alone shall judge His own, so I His  
judgment bide."

President Volunteer Band, '26; President Min-  
isterial Association, '26; President Philoma-  
thean, '26; First Sergeant R. O. T. C., Com-  
pany C, '26.

LORRAINE HERNDON, A.B.

LEWISVILLE, ARKANSAS

"Lorraine"

*Alpha Kappa Literary Society*

"Let us do so—aspire to live as these  
In harmony with truth, ourselves being true."

President Alpha Kappa, '26; President Y. W.  
A., '26; Ouachitonian Staff, '25; Alpha Kappa  
Yell Leader.

DOUGALD McMILLAN, A.B.

ARKADELPHIA, ARKANSAS

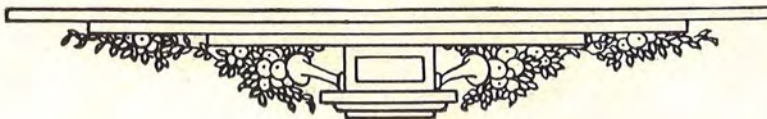
"Doug"

*Hermesian Literary Society*

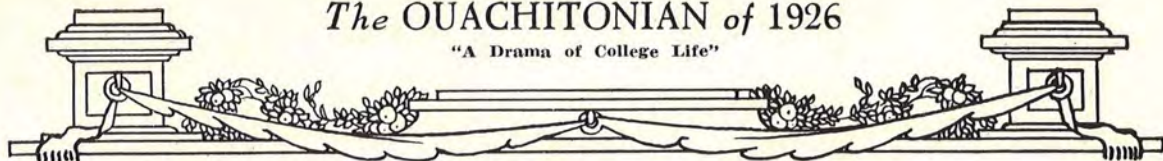
"In the lexicon of youth, which fate reserves  
For this bright manhood, there is no such  
word

As—Fail."

Sons' and Daughters' Association.







## Senior Class

H. PAUL MORTON, A.B.

*Diploma in Expression*

MOUNTAIN HOME, ARKANSAS

"Paul"

*Hermesian Literary Society*

"I'm sure his life is happy, and he doesn't envy yours."

Pi Kappa Delta, '26; Debating Team, '25; President B. Y. P. U., '26; Band, '25, '26; Secretary Hermesian, '26; Signal Staff, '25.

VELMA JEAN CYPERT

*Diploma in Art*

ARKADELPHIA, ARKANSAS

"Baby Peggy"

*Corinnean Literary Society*

"A sweet heart lifting cheerfulness  
Like springtime of the year,  
Seem'd ever on her steps to wait."

Art Club; Signal Staff, '25.

ERNEST H. ACUFF, A.B.

*Ministerial Association*

ARKADELPHIA, ARKANSAS

"E. H."

*Ministerial Association*

"His strength is as the strength of ten  
Because his heart is pure."

Vice-President Ministerial Association, '25, '26; Full Time Preaching; Summer Evangelistic Work.

RAY E. PORTER, JR.

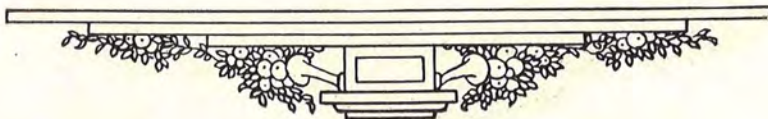
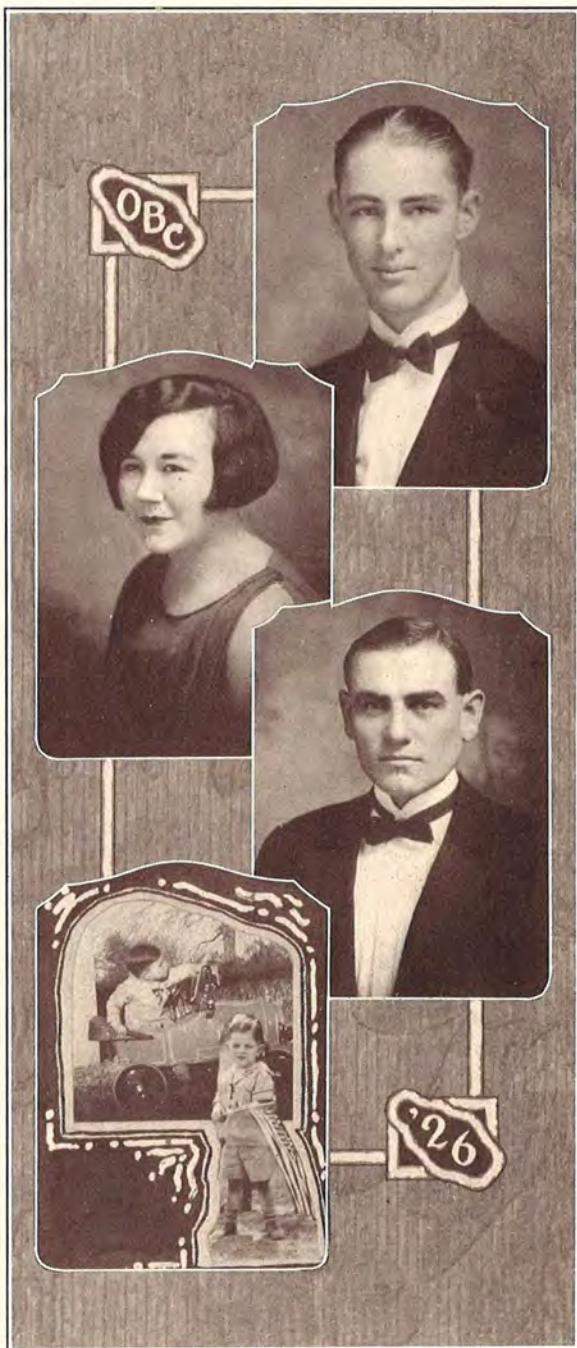
*Mascot*

ARKADELPHIA, ARKANSAS

"Little Captain"

During his four years in Ouachita, Ray has been a big bright spot on the campus, loved and petted by all. His flag is almost a part of his anatomy. His tricycle and auto have been ever faithful to his roamings.

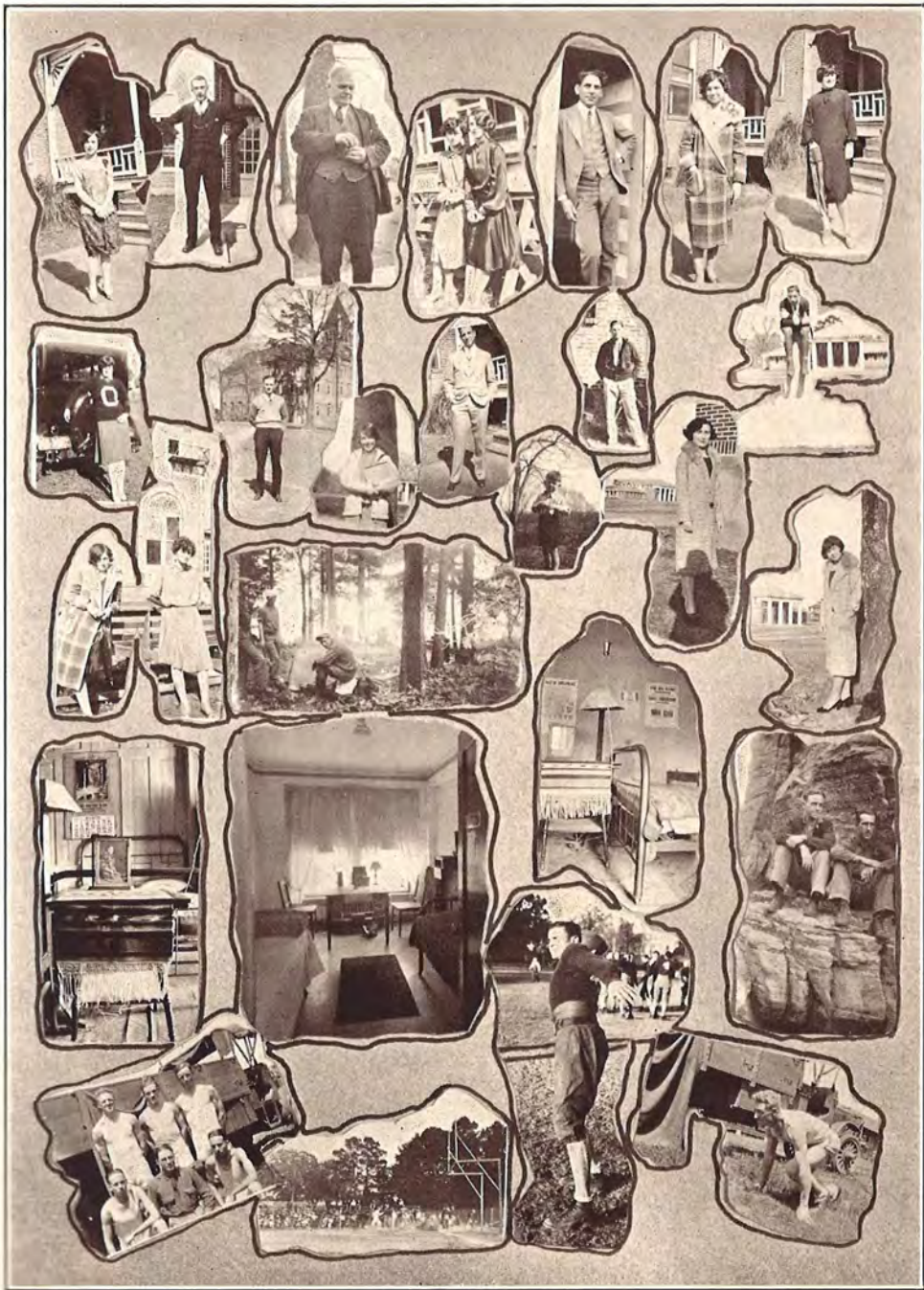
We cannot mention all the honors which he has achieved, but here are a few of them: Captain Golf Team, '26; Mounted Color Guard, R. O. T. C. (Right on the Campus); Member Society for Prevention of Cruelty to Dormitory Students.





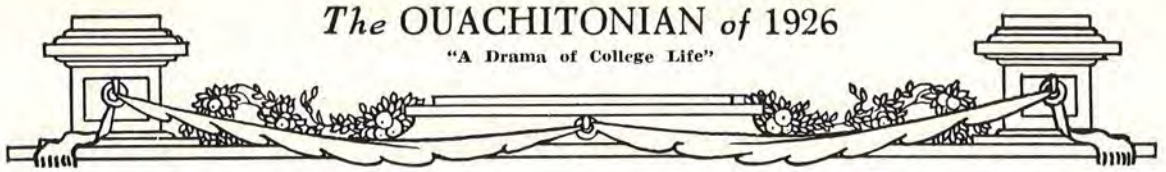
The OUACHITONIAN of 1926

"A Drama of College Life"



WISE AND OTHERWISE





## The OUACHITONIAN of 1926

"A Drama of College Life"

### The Senior Class of 1926

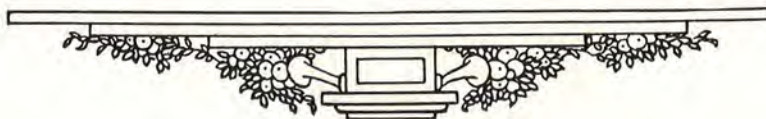
**T**HE Senior Class of 1926 has not only all the worthy characteristics that mark every class of Ouachita graduates but there are qualities, incidents, and conditions that will make this class exceptional from all others.

As the Freshman Class of 1923, it has the distinction of being the next to the largest class ever to enter Ouachita. More than one hundred twenty-three boys and girls enrolled as Freshmen during those September days which marked the beginning of another school year. Of this number forty-four are finishing in the class of 1926 and four received degrees with other classes. The class this year includes many who did not begin as Freshmen four years ago. This class includes some fifteen members who were graduated together from the Arkadelphia High School, and some three or four of this number entered the first grade during the same year and have made the whole course together.

The finishing of all these mark the passing of the final group who entered Ouachita under the old conditions, namely: the girls in the old dormitory and the boys rooming in town. Members of this class have been made to realize what an endowment will mean to Ouachita by what was given in Cone-Bottoms Hall. The endowed Ouachita has been made a part of the complex sentiment concerning her future status.

Another high point in the closing chapter of this class history is that along with them will go Dr. Dicken, all seeking realms of usefulness elsewhere. The losing of such a man cannot but make a change in many conditions—but Ouachita will continue to grow and to accomplish the ideals, established by her leaders, who have served in the cause of promoting the welfare of society.

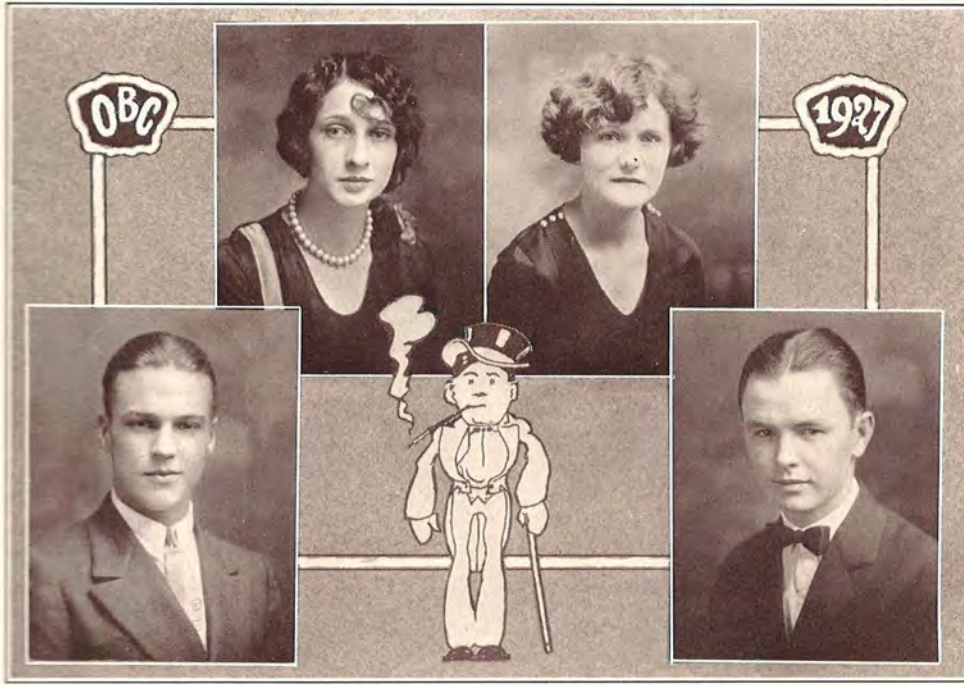
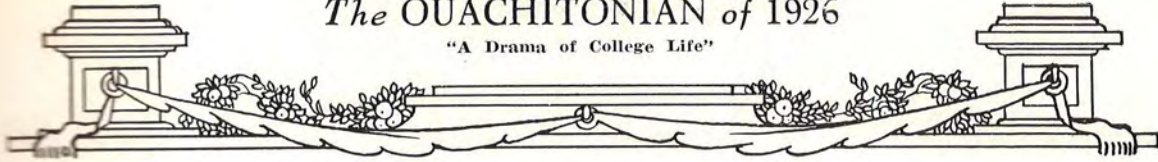
Chief among those who shall promote the future growth of Ouachita College are the Alumni of all time. To these the Class of 1926 will be added and they will combine their efforts in the task of making the "Greater Ouachita" a reality. No other class has ever gone out with such an impetus from tangible growth in every department of their Alma Mater.





# The OUACHITONIAN of 1926

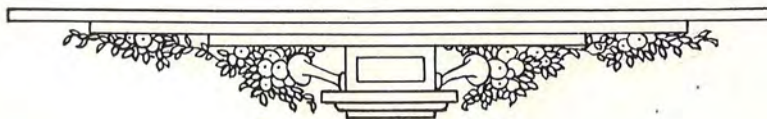
"A Drama of College Life"



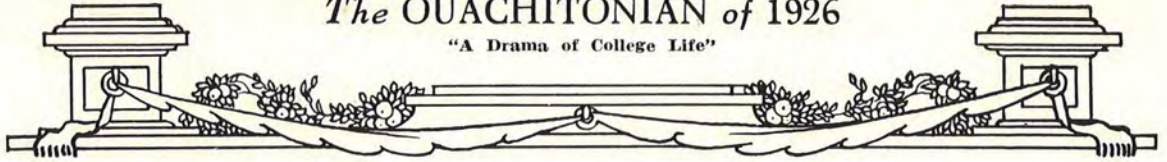
## Junior Class

### OFFICERS

- CLYDE HANKINS, *President* . . . . . Pine Bluff, Ark.  
Clacky; Handsome
- MARTHA TULL, *Vice-President* . . . . . Pine Bluff, Ark.  
Merry; Talented
- BESSIE MAE MATTHEWS, *Secretary* . . . . . Hollygrove, Ark.  
Boyish; Mirthful; Moody
- HERMOND WESTMORELAND, *Treasurer* . . . . . Booneville, Ark.  
Happy; Worthy







## Junior Class

IRENE MOORE  
MAGAZINE, ARK.

*Independent; Meditative*

PRUDENCE AMOS  
BOONEVILLE, ARK.

*Prudent; Amiable*

JOE RUSHTON  
EMERSON, ARK.

*Just; Reserved*

EDWARD BLACKMON  
STUTTGART, ARK.

*Energetic; Balanced*

H. WESTMORELAND  
BOONEVILLE, ARK.

*Honest; Wise*

HOMER REYNOLDS  
LITTLE ROCK, ARK.

*Hearty; Romantic*

MARIE LANDIS  
LEWISVILLE, ARK.

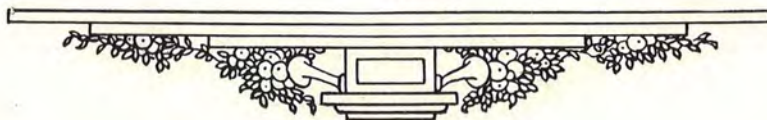
*Modest; Learned*

MYRTLE SHAVER  
ARKADELPHIA, ARK.

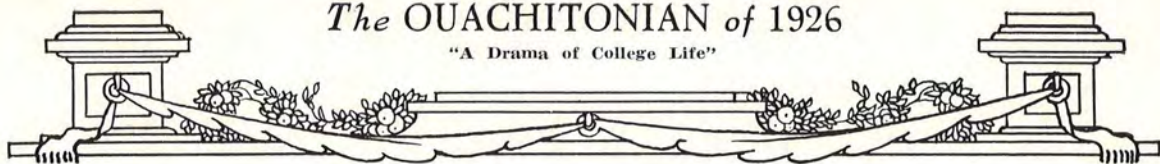
*Mannerly; Studious*

TRUETT BURNSIDES  
TEXARKANA, ARK.

*Truthful; Benevolent*







### Junior Class

CORINNE COULTER  
BOONEVILLE, ARK.  
*Capable; Contented*

FRANCES KIMBROUGH  
SPRINGDALE, ARK.  
*Friendly; Kind*

HARRY BORAH  
ARKADELPHIA, ARK.  
*Honored; Benevolent*

WILLARD WHITE  
ARKADELPHIA, ARK.  
*Worker; Wise*

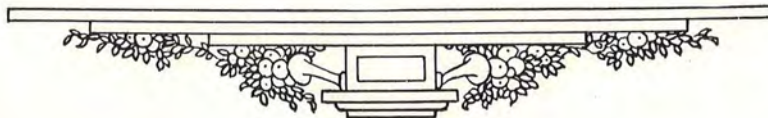
CLYDE HANKINS  
PINE BLUFF, ARK.  
*Cheery; Humorous*

WILSON ROYAL  
MONTICELLO, ARK.  
*Willing; Rambling*

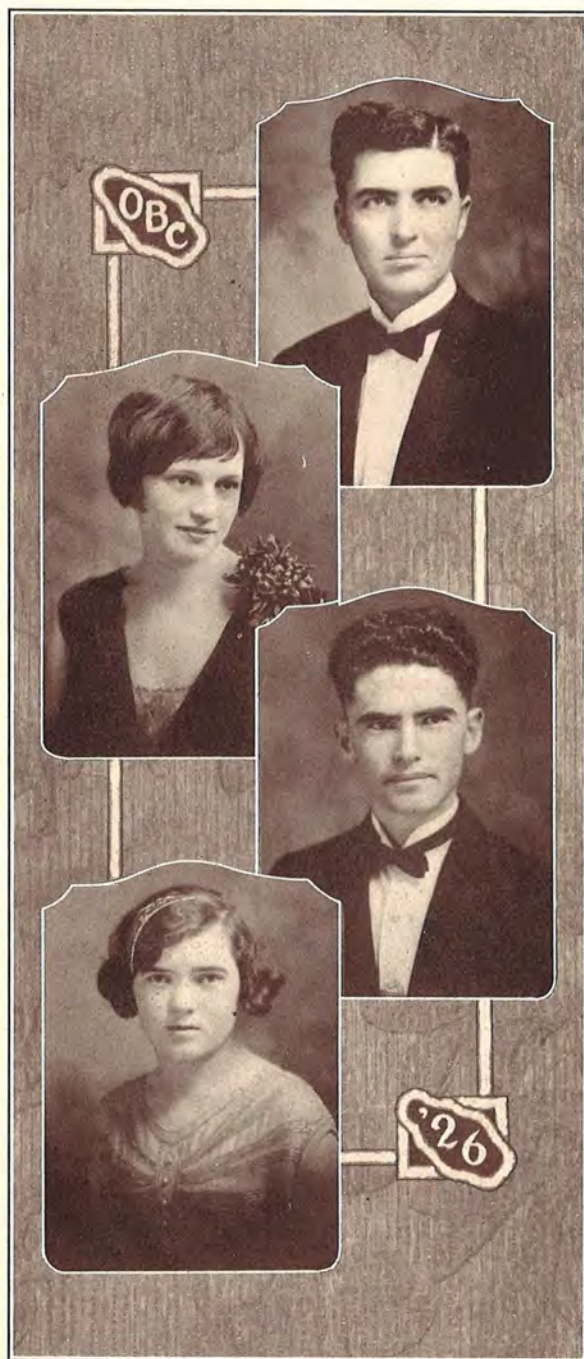
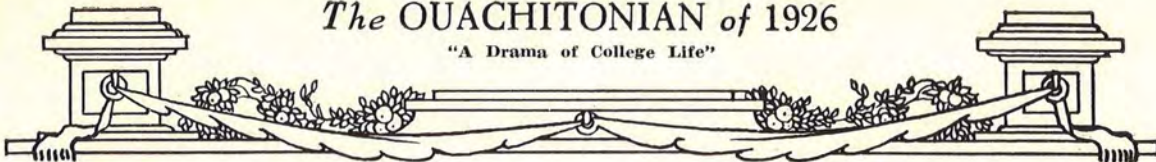
GLADYS GREEN  
MONTICELLO, ARK.  
*Gregarious; Glad*

LEONE MOELLER  
CHICAGO, ILL.  
*Likeable; Masterful*

L. D. EPPINETTE  
HATFIELD, ARK.  
*Loyal; Determined; Earnest*







## Senior Class

D. C. MAYO, A.B.

ARKADELPHIA, ARKANSAS

"D. C."

*Ministerial Association*

"His eloquence is classical in style,  
Is clear, and full, and stately and sincere;  
His earnest and undazzled eye he keeps  
Fix'd on the sun of Truth, and breathes his  
words."

President Ministerial Association, '26.

CHLOE VANBEBER

*Diploma in Piano*

HARRISBURG, ARKANSAS

"Chloe"

*Corinnean Literary Society*

"The light of love, the purity of grace,  
The mind, the music, breathing from her  
face."

Orchestra, '24, '25, '26; Y. W. A.; E. E. E. Club.

JOE BUFORD BARNETT, A.B.

ARKADELPHIA, ARKANSAS

"Papa"

*Philomathean Literary Society*

"That man is great and he alone,  
Who serves a greatness not his own,  
For neither praise nor pelf;  
Content to know and be unknown;  
Whole in himself."

Pi Kappa Delta; Secretary Ministerial Association, '23; Vice-President Ministerial Association, '25; Vice-President Philomathean, '26; Alternate Orator, '26; Debating Team, '25, '26; First Lieutenant R. O. T. C., '26.

EUPHIA MUZETTE MEDLOCK, A.B.

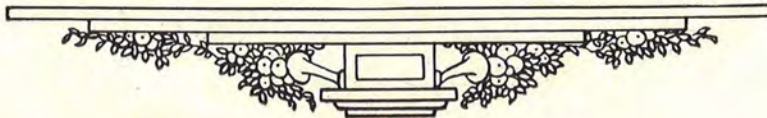
ARKADELPHIA, ARKANSAS

"Muzette"

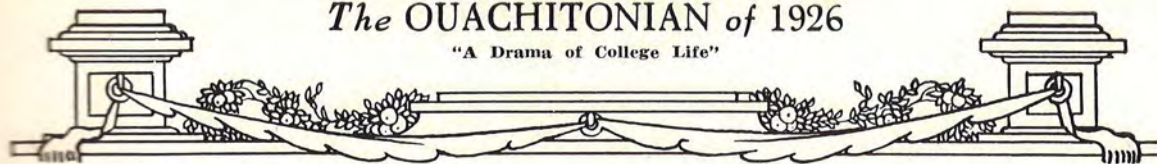
*Alpha Kappa Literary Society*

"God made her small in order that He might  
do a more choice bit of workmanship."

Sons' and Daughters' Association.







Junior Class

LAURIE McMILLAN  
ARKADELPHIA, ARK.  
*Lovable; Merry*

VIRGINIA ALLISON  
ARKADELPHIA, ARK.  
*Vivacious; Adorable*

DONALD TATMAN  
ARKADELPHIA, ARK.  
*Devoted; Truthful*

JOHN T. DANIEL  
ARKADELPHIA, ARK.  
*Jolly; Trim; Dubious*

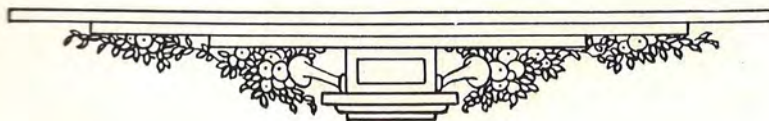
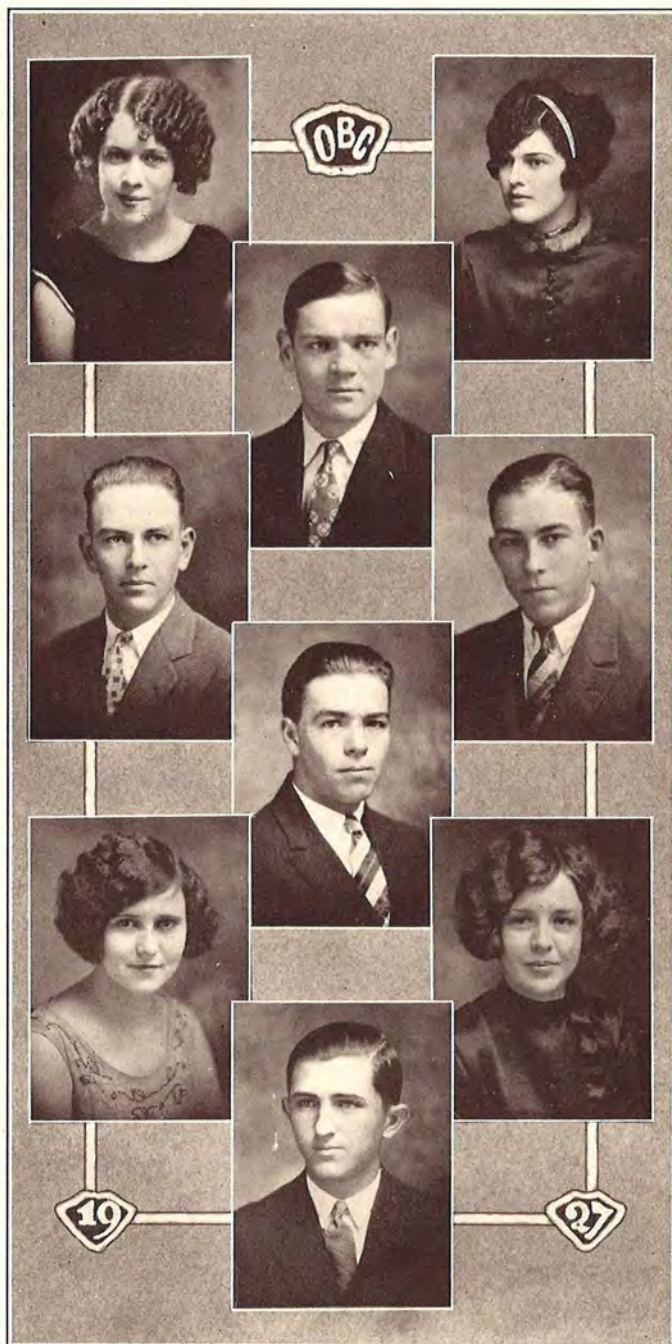
ALFRED LILE  
STEPHENS, ARK.  
*Awful; Likeable*

HARDY WINBURN  
ARKADELPHIA, ARK.  
*Hard; Witty*

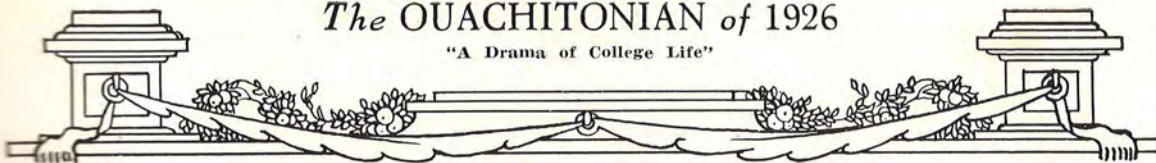
HAZEL BUTLER  
ARKADELPHIA, ARK.  
*Hilarious; Bonny*

EMMA DOANE  
ARKADELPHIA, ARK.  
*Entrancing; Dainty*

RELTON MCCARROLL  
WALNUT RIDGE, ARK.  
*Rushing Margaret*







Junior Class

ELIZABETH SLOAN  
ARKADELPHIA, ARK.  
*Exact; Sensible*

LESTER BLAYLOCK  
ARKADELPHIA, ARK.  
*Lenient; Brave*

ROBERT IRA SELPH  
ARKADELPHIA, ARK.  
*Reserved; Invaluable; Steady*

SHELBY WHITEHEAD  
TAYLOR, ARK.  
*Sincere; Warm-hearted*

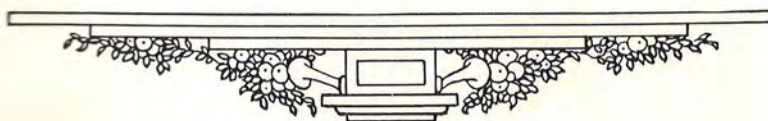
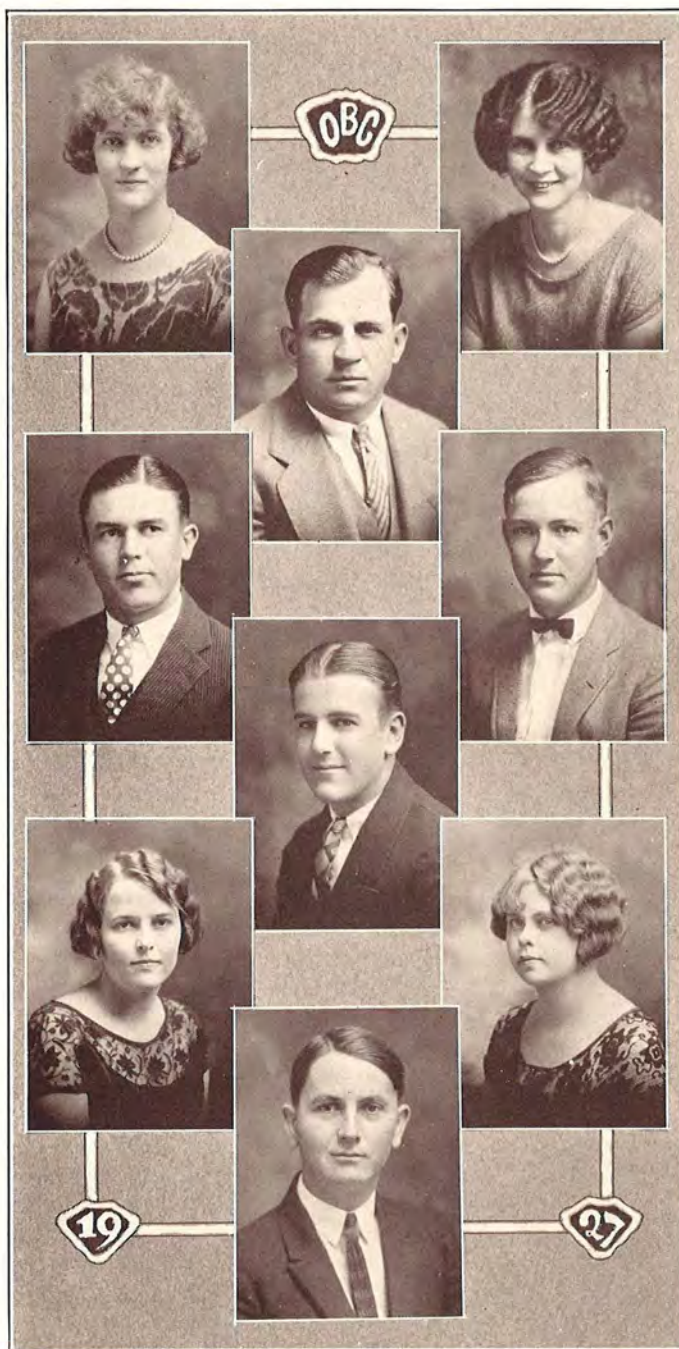
WILLIAM CONDRAY  
ARKADELPHIA, ARK.  
*Wise; Confident*

LOYCE BILES  
AUGUSTA, ARK.  
*Loving; Bold*

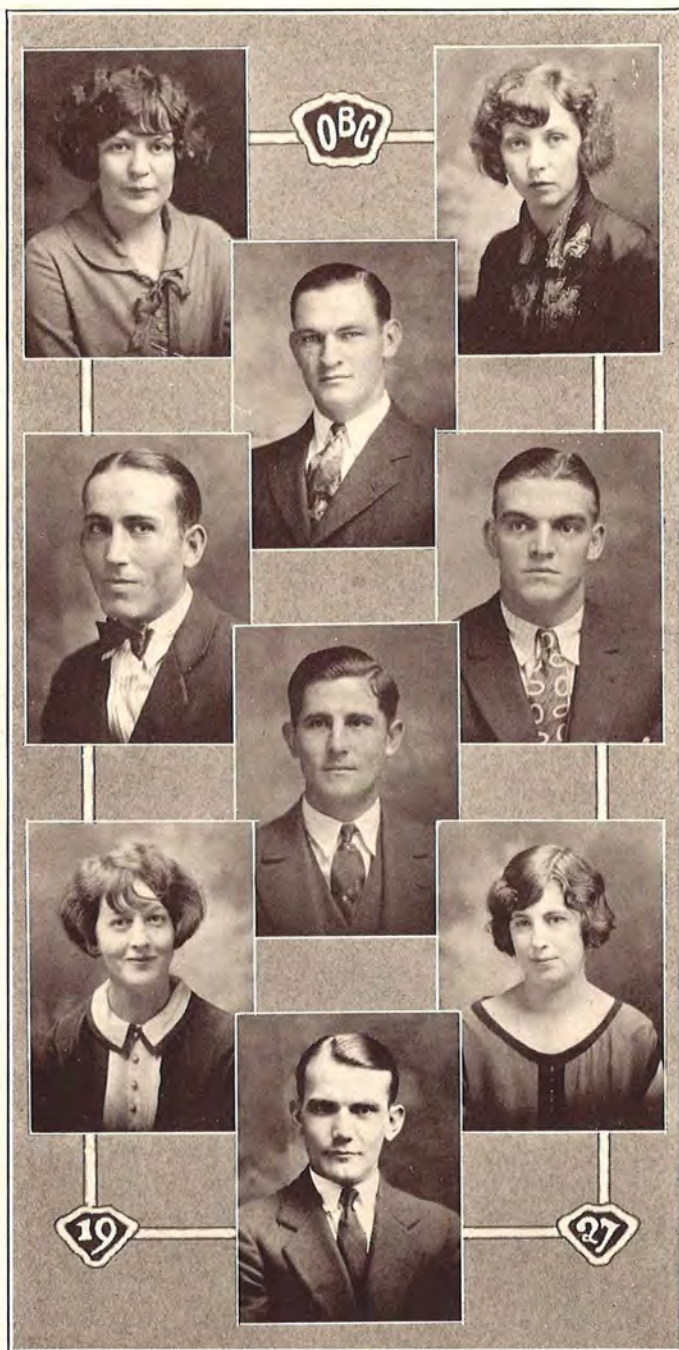
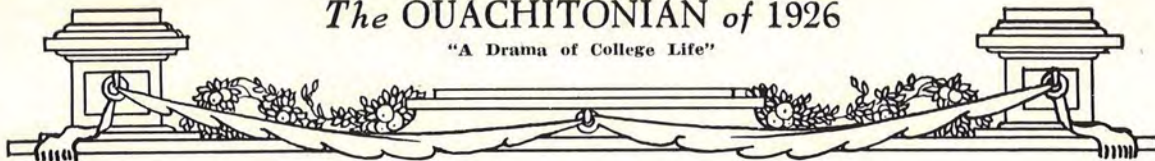
HAZEL SMITH  
STEPHENS, ARK.  
*Healthy; Smiling*

BENE GENE SMITH  
EL DORADO, ARK.  
*Busy; Garrulous; Sophisticated*

A. B. COOPER  
ARKADELPHIA, ARK.  
*Argumentative; Beneficent; Calm*







### Junior Class

LOIS DARDNNE  
COY, ARK.

*Learned; Demure*

RUTH HUGHES  
BLYTHEVILLE, ARK.

*Rushing; Hilarious*

WALTER JACOWAY  
LITTLE ROCK, ARK.

*Warlike; Jakey*

GARY DILDY  
NASHVILLE, ARK.

*Gallant; Daring*

JACK NOWLIN  
ARKADELPHIA, ARK.

*Jocular; Notable*

ROY RIGGINS  
BUCKNER, ARK.

*Riotous; Regular*

THELMA MAE STRIDER  
TUCKERMAN, ARK.

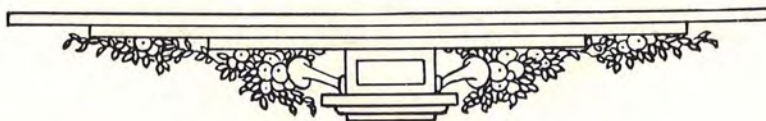
*Talkative; Merry; Sweet*

EMMA STEED  
STAR CITY, ARK.

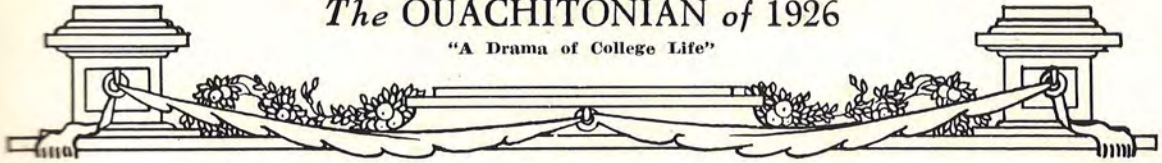
*Easy-going; Sincere*

WILLIAM MOORE  
LITTLE ROCK, ARK.

*Willing; Managing*







Junior Class

VELMA McCONNELL  
FORT SMITH, ARK.  
*Virtuous; Musical*

THASE FERGUSON  
PINE BLUFF, ARK.  
*Tractable; Fine*

BOSWELL McMILLAN  
ARKADELPHIA, ARK.  
*Brisk; Musical*

CURTIS PULLIG  
WALDO, ARK.  
*Comic; Prancing*

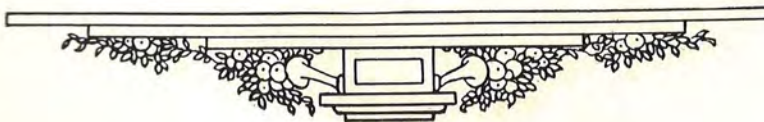
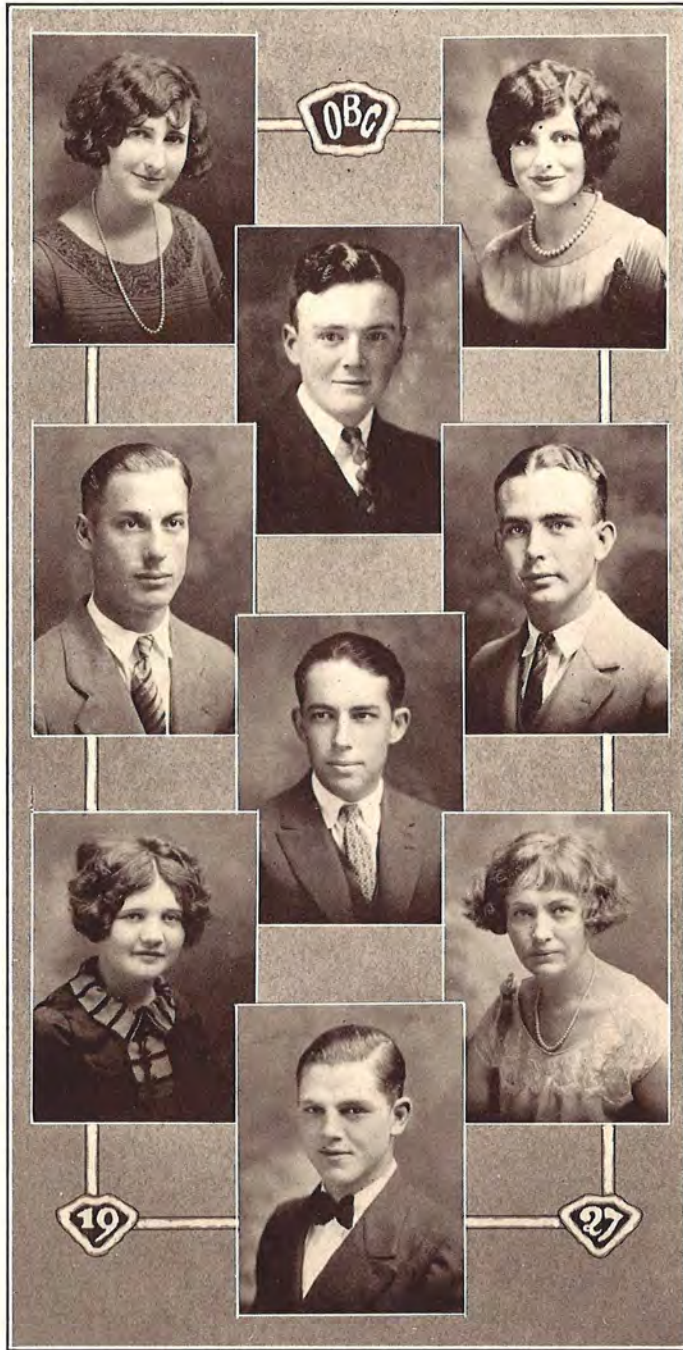
E. H. MILLER  
GURDON, ARK.  
*Earnest; Hopeful; Manly*

FULTON SIMPSON  
HELENA, ARK.  
*Figity; Smart*

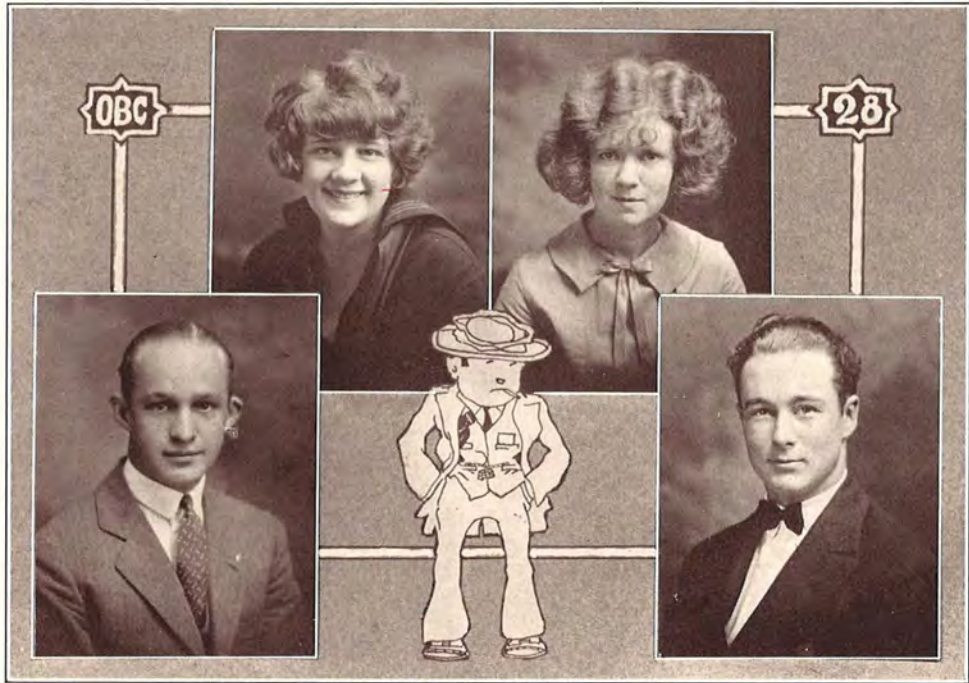
LUCELLE SMITH  
CAMDEN, ARK.  
*Light-hearted; Singing*

ARA STOKES  
BUCKNER, ARK.  
*Audacious; Sportive*

EARL SKINNER  
LOCKESBURG, ARK.  
*Erratic; Sheikish*



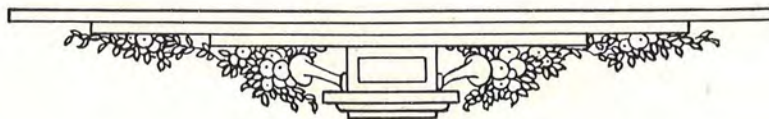




### Sophomore Class

OFFICERS

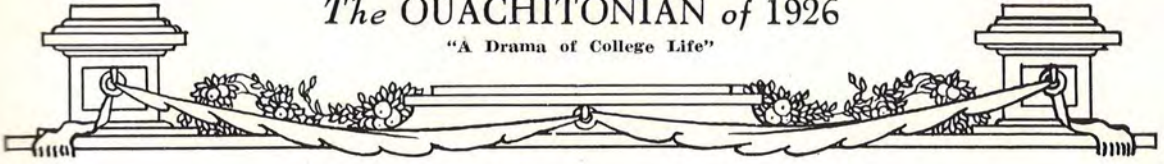
- |                                 |                       |
|---------------------------------|-----------------------|
| ALBERT HENRY ROBINSON . . . . . | <i>President</i>      |
| JOSEPHINE RILEY . . . . .       | <i>Vice-President</i> |
| FRANCES MOORE . . . . .         | <i>Secretary</i>      |
| JAMES COLEMAN . . . . .         | <i>Treasurer</i>      |



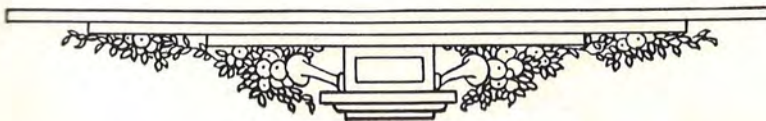


The OUACHITONIAN of 1926

"A Drama of College Life"



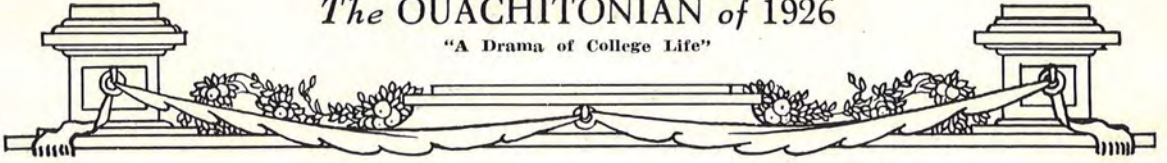
SOPHOMORE CLASS



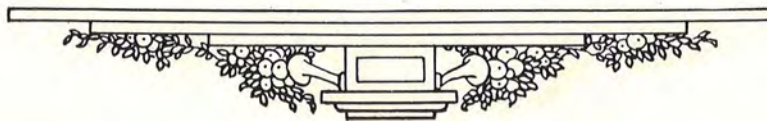


# The OUACHITONIAN of 1926

"A Drama of College Life"



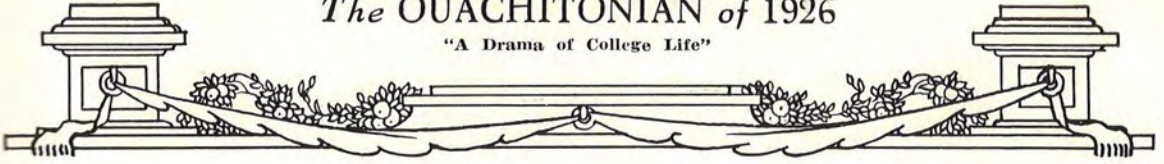
SOPHOMORE CLASS



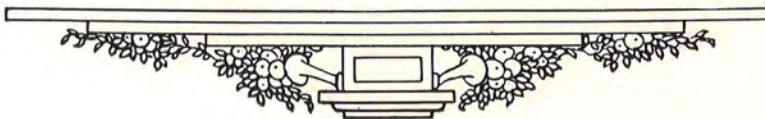


The OUACHITONIAN of 1926

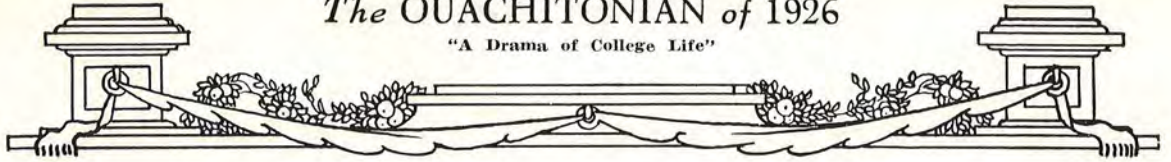
"A Drama of College Life"



SOPHOMORE CLASS







# SOPHOMORE

## Class Roll

(Page One)

(Left to Right)

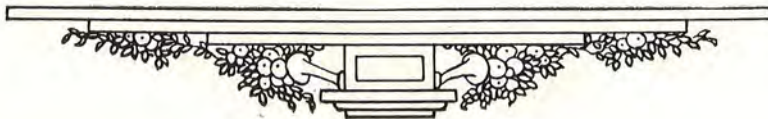
L. E. THRASHER, JR.	LOUISE BEST	MILDRED M. SMITH
WILFRED HORNE	OLIVE GLOVER	JOHNNIE CARTER
LUCILLE SELPH	HORACE POWERS	SYLVIA WEBB
(Junior, Editor's Error)	BEN RUNYAN	JOHN JARRETT
LEON JONES	ERNEST SALLEE	CHARLES COLE
ILA JOHNSON	MATHILDA GARRETT	
	GLORIA CLIETT	

(Page Two)

LEE NICHOLS	MARGUERITE DOZIER	HELEN SCOTT
BILL BRASHER	FERN DYKES	FRANK STROOPE
OLIVE MCKNIGHT	ORAN CHENAULT	MARY STEPHENSON
GEORGE CHRISTOPHER	HOMER GRAHAM	ERMA BAKER
MILDRED L. SMITH	FRED MILLER	GUNTER ENGLAND
	IONE WRIGHT	
	LOIS ROYAL	

(Page Three)

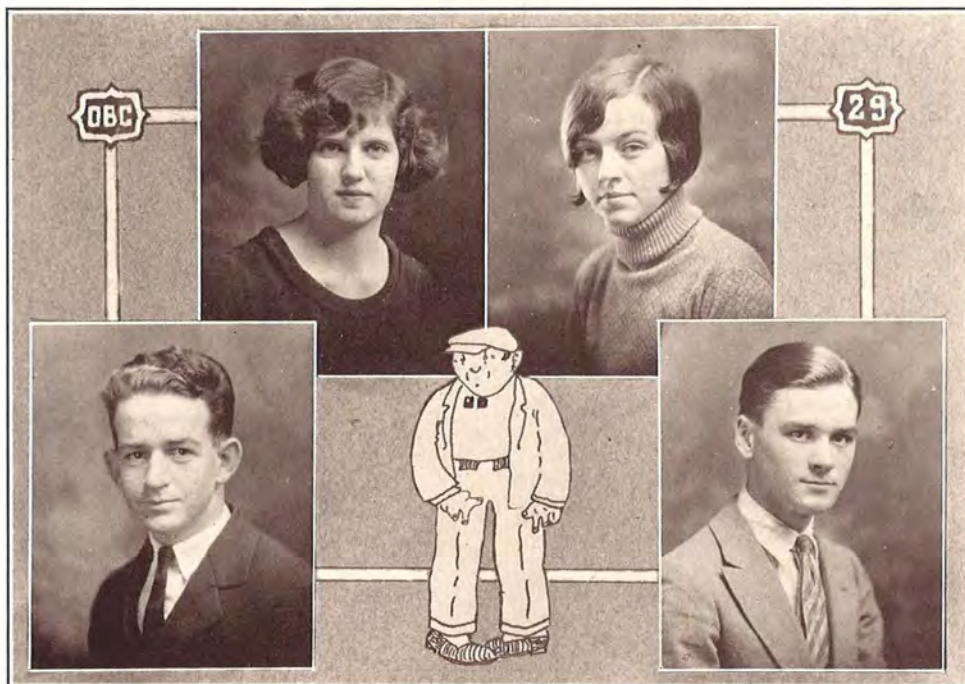
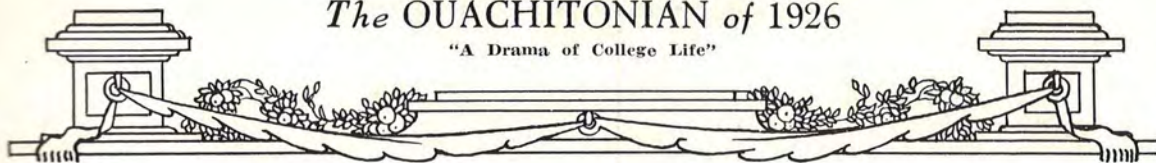
JOHN MALCOLM MOORE	JOE NICHOLS	MARY ALICE LOFLIN
HAROLD MEEKS	BRUCE PRICE	MILDRED GAY
ALICE FORTNEY	JEFF RANEY	VELMA LOFLIN
ILA WOOD	THEO HOLLAND	EDWARD PUGH
MARY IDA CONDRAY	WILLIAM JONES	MILTON SMITH
	JOE NUCKOLS	
	JOHN LOFTON	





# The OUACHITONIAN of 1926

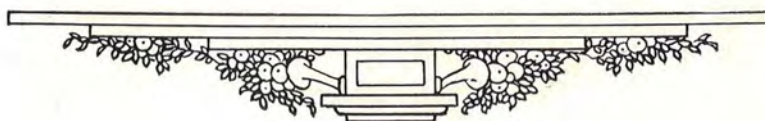
"A Drama of College Life"



## Freshman Class

### OFFICERS

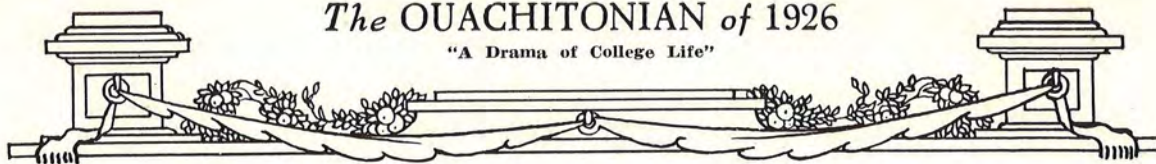
- WILLIE MATNEY . . . . . *President*  
MARGARET DALY . . . . . *Vice-President*  
MELVA RODGERS . . . . . *Secretary*  
WILLIAM NELSON . . . . . *Treasurer*



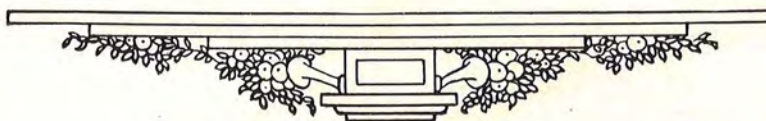


The OUACHITONIAN of 1926

"A Drama of College Life"



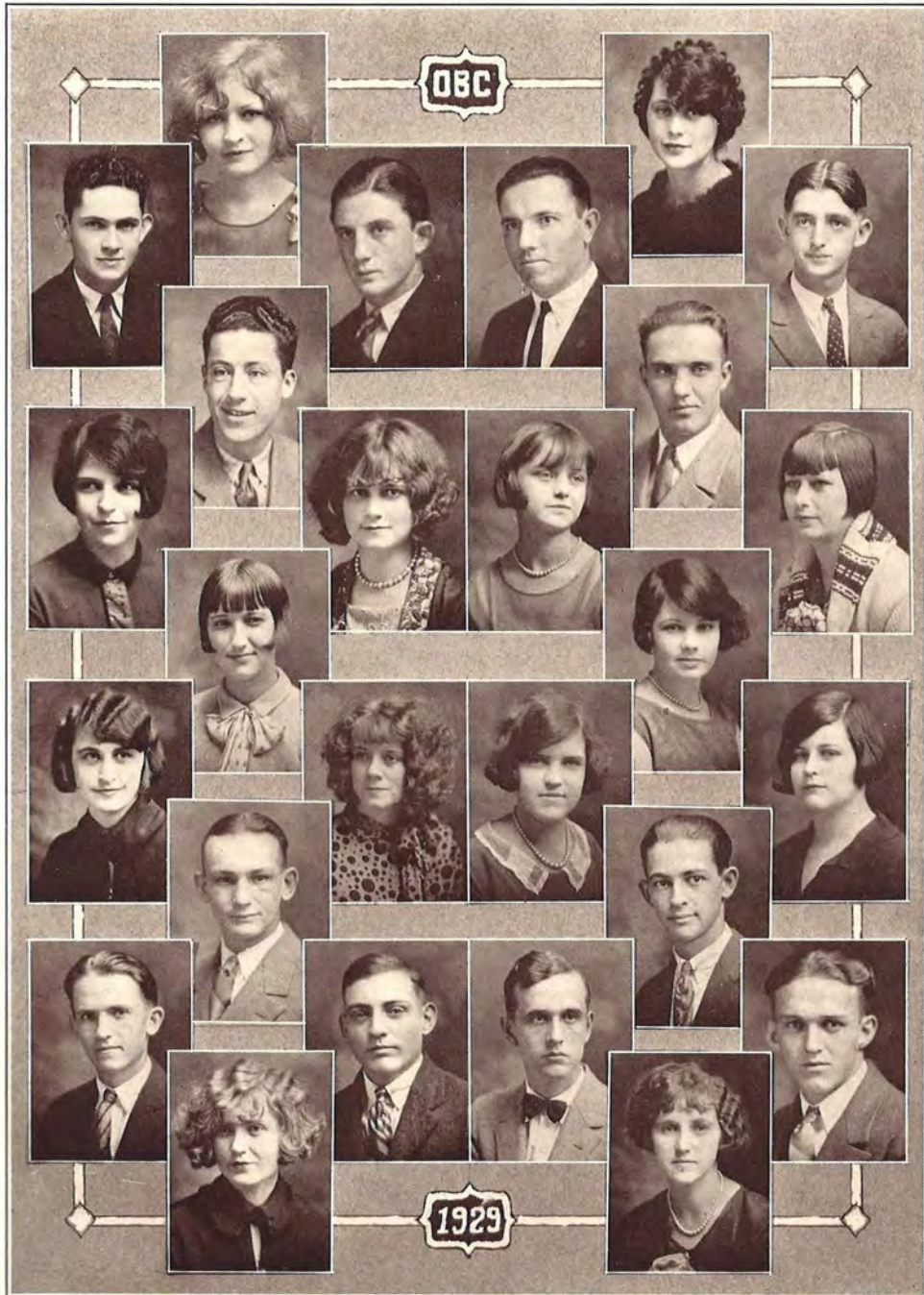
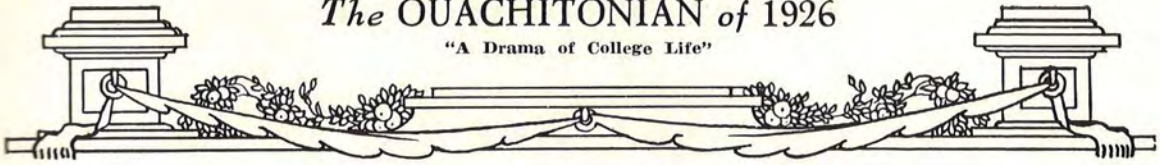
FRESHMAN CLASS



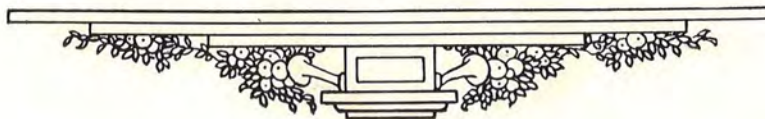


The OUACHITONIAN of 1926

"A Drama of College Life"



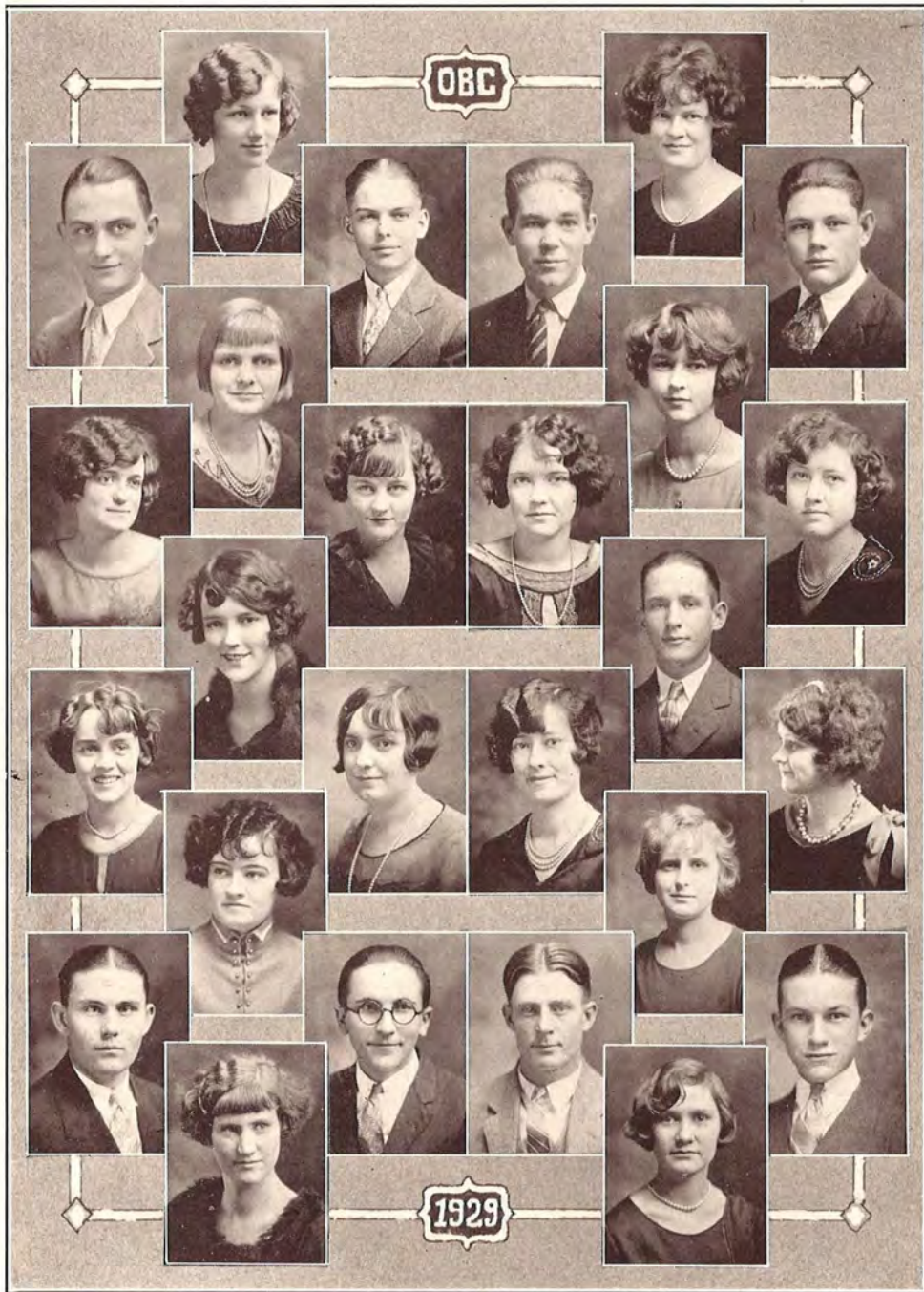
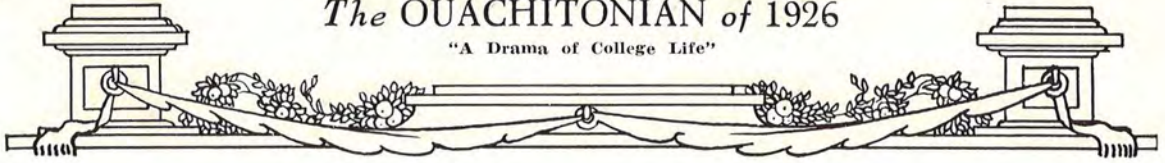
FRESHMAN CLASS



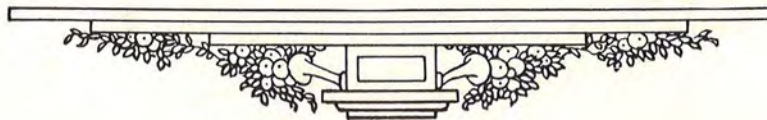


The OUACHITONIAN of 1926

"A Drama of College Life"



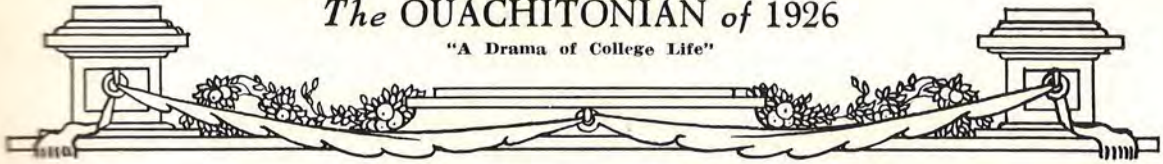
FRESHMAN CLASS





# The OUACHITONIAN of 1926

"A Drama of College Life"



## Class roll

### First Page

left to right

JEANETTE MCKENSIE  
HESTER COMPERE  
AUSTREY KEELING  
EDWIN BYRD  
HARRELL MCCARROLL  
ALBERT SIMMS  
KEARNS HOWARD  
WILLIAM BUCHANON  
EUNICE GOODMAN  
ADELLA MOORE  
SARA TOMPKINS  
LUCILLE BOULDEN  
VERA LAWLESS  
LOUISE BLANKS  
MARTHA SMITH  
ADA CLAIR WADE  
JENNY LEE WORTHEN  
FLORENCE MOORE  
DANNY DEEVERS  
JACK CARTER  
EDWIN ERWIN  
MARVIN BUFFINGTON  
CLYDE HART  
BABE GEORGE  
OPAL MIZE  
MARY ELLA MCRAE

### Second Page

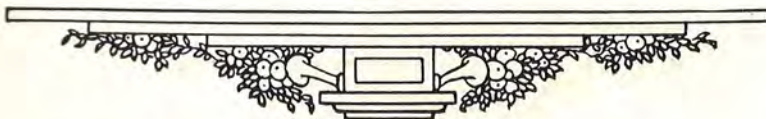
left to right

WILMA POLK  
WANDA JONES  
ARREN SMITH  
VALIANT LUKER  
JOHN KILBURN  
BERLIN MILLSAPPS  
FRED TERRY  
JOHN BRAZIL  
JUNE GANZELL  
PAULINE GOODWIN  
MERLE VICK  
RUTH DONHAM  
ROSALIE ARNETT  
EVELYN POIMBOEUF  
NORA DILDY  
VICTORIA MOORE  
ANGIE THOMAS  
LAWRENCE BRIT  
OTIS WOODSMALL  
CARROLL HINSELEY  
JIM MCCASKILL  
ROBERT MORRIS  
HOBSON FRAYSER  
ERNEST SIBERT  
NORINE UTLEY  
TINA MILLSAPPS

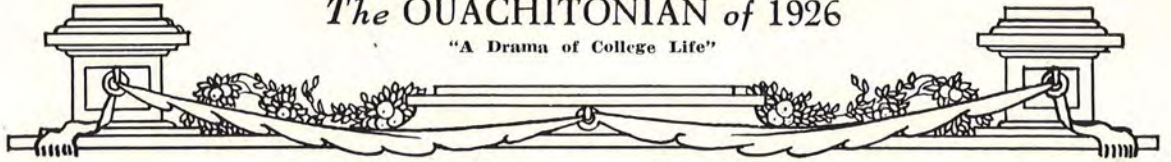
### Third Page

left to right

MILDRED ROBINSON  
LELIA THOMAS  
AUSTIN EDWARDS  
WARREN HILL  
LLOYD JORDAN  
LELAND HILL  
ALBERTA GOODWIN  
MAURENE FOWLER  
DORIS SHEPPARD  
MAY HARTSELL  
RUBY WOOD  
ODESSA FORD  
CLEDDIE FAY COX  
RALPH DOWDY  
MABLE HILL  
ALBERTA HARRINGTON  
EXIE BALL  
JEWEL STONE  
NAOMI TANNER  
CLARICE MCDANIEL  
NOBLE RIBELIN  
CARL MOORE  
THWITHERSPOON  
CHARLES MOORE  
BERTHA DOBKINS  
WENSIL MILLER







*PROLOGUE*

Tell me not, in mournful numbers,  
"Life is but an empty dream!"  
For the soul is dead that slumbers,  
And things are not what they seem.

Life is real! Life is earnest!  
And the grave is not its goal;  
Dust thou art, to dust returnest,  
Was not spoken of the soul.

Art is long, and time is fleeting,  
And our hearts, though stout and brave,  
Still like muffled drums are beating  
Funeral marches to the grave.

Trust no future, howe'er pleasant!  
Let the dead past bury its dead!  
Act, act in the living present!  
Heart within, and God o'erhead!

Lives of great men all remind us  
We can make our lives sublime,  
And departing, leave behind us  
Footprints on the sands of time.

Let us, then, be up and doing,  
With a heart for any fate;  
Still achieving, still pursuing,  
Learn to labour and to wait.

—LONGFELLOW'S "A PSALM OF LIFE."

