


11-1989

## Tiger Tunes 1989

Ouachita Student Foundation  
*Ouachita Baptist University*

Follow this and additional works at: <http://scholarlycommons.obu.edu/tunes>

 Part of the [Music Performance Commons](#), and the [Theatre and Performance Studies Commons](#)

---

### Recommended Citation

Ouachita Student Foundation, "Tiger Tunes 1989" (1989). *Ouachita Student Foundation Tiger Tunes*. 9.  
<http://scholarlycommons.obu.edu/tunes/9>

This Book is brought to you for free and open access by Scholarly Commons @ Ouachita. It has been accepted for inclusion in Ouachita Student Foundation Tiger Tunes by an authorized administrator of Scholarly Commons @ Ouachita. For more information, please contact [mortensona@obu.edu](mailto:mortensona@obu.edu).







# Eleventh Annual Tiger Junes 1989

## ALL CAMPUS SING

Produced by the  
OUACHITA STUDENT FOUNDATION

### ORDER OF EVENTS

Hosts and Hostesses . . . . . Hold On

#### Group One

Welcome and Introduction of Judges . . . Mitch Bettis and Cindy Schopmeyer

Hosts and Hostesses . . . . . Forever in His Care

#### Group Two

Hosts and Hostesses . . . . . Era Medley

#### Group Three

### INTERMISSION

Hosts and Hostesses . . . . . We Could Be Together

#### Group Four

Hosts and Hostesses . . . . . No More Rhyme

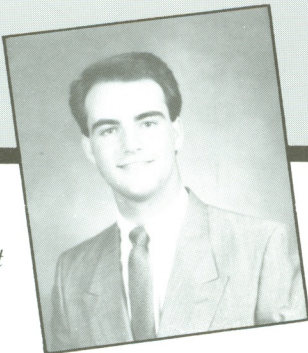
#### Group Five

Hosts and Hostesses . . . . . We Can Last Forever

#### Group Six

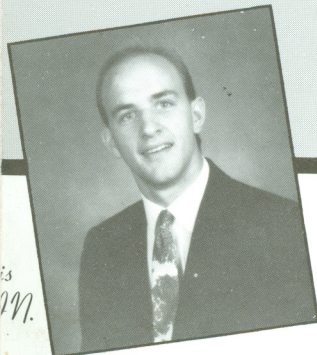
Hosts and Hostesses . . . . . Carpenter Medley

Awards and Recognitions . . . . . Mitch Bettis and Cindy Schopmeyer



*an Barrett  
kadelphia*

*Chris Norris  
Middleton, IN.*



*Lane Harrison  
Norphlet*



## PARTICIPATING GROUPS

### **Beta Beta Men's Social Club** **"Ain't Life the Pits!"**

Chuck Hargett - Director, Lex Mickle, Phillip Vines, Brad Bishop, Wes Nichols, Lance Faddis, Lance Eads, Todd Parker, Brad Boyle, Nick Tyler, Brant Matros, Billy Daniel, Paul Granberry, Garland Watlington, Tony Guerra, Bart Byrd, Chris Rinehart, Cameron Hedrick, Scott Bonge, Bob Sexton, David Runsick, Corey Gillum, Kerry Roy, Mike Holcomb, Daniel Sweet, Ken Gibson, Steve Schrader, Todd Thompson, Mike Bone, Jeff Hinkle.

### **Chi Delta Women's Social Club** **"Pigs In Paradise!"**

Paige Spann, Cheryl Taylor, and JoBeth Ford - Directors, Kelly Upchurch, Kelly Stabley, Shelley Parsel, Katherine Massey, Cindy Waller, Leigh Burnham, Debbie Turner, Denise Masters, Holly Feltman, Angey Fincher, Kayla Miles, Paige McDonald, Karren Snider, Stephanie Coffee, Lori Kuntz, Kelly Coulter, Kimberly Coulter, Robin Brotherton, Shannon Moore, Michelle Wood, Peggy Cox, Kristi Walker, Christie Schleiff, Christy Bureson, Carol Darr.

### **EEE Women's Social Club** **"The Tooth and Nothing But!"**

Amy Crouch, Jamie Frazier - Directors, Beth Blakely, Sharon Hossler, Jill Hamlin, Lori McClain, Daphne Davis, Jennifer Hill, Laura Bushmaier, Hillis Holman, Martha Garner, Christi Freel, Jana Crain, Cathy Daniel, Georgette Sims, Shawna Childs, Cyndy Davis, Terry Lang, Wendy Johnson, Hannah Whitley, Kristie Usery, Cindy Allison, Liz Rucker, Laurie Lewis, Keri Jordan, Susan Calhoun, Laura Hill, Cathy Godfrey, Angie Hoggard, Jennifer Sternberg, Deanna Mosley, Brenda Crowley, Melissa Nesbitt.

### **Kappa Chi Men's Social Club** **"The Ants Come Marching Home Again!"**

Shaun Walvoord - Director, Paul Williams, Bill West, Jed Harris, Glen Fowler, Tom Compton, Vince Husted, Kent Smith, Tommy Moseley, Matt Smith, Robbie Sherman, Timothy Fowler, Scott Walls, David Higgs, Billy Betts, Jody Hurst.

### **Gamma Phi Women's Social Club** **"Stuck on You"**

Theresa Davenport - Director, Candy Meredith, Lamona Lawrence, Sharon Roper, Melissa Carrier, Julie Legge, Dana Roberts, Mary Floyd, Sara Smith, Sara Bradley, Kim Hare, Melissa Nesbitt, Bridget Owens, Linda Snider, Paige Umholtz, Lydia Fowler, Carrie Jones, Shelly Ravenscraft, Dawn Verduin, Jennifer Burchfield, Michele Murphy.

### **Tri Chi Women's Social Club** **"In the Heat of The Night"**

Krisie Holmes, Kelly Schmidt - Directors, Cindy Watson, Beth Maloch, Ashley Fulmer, Beth Bennett, Maurie Gray, Krista Helms, Allison Fendley, Mandy Armbruster, Jenifer Moseley, Cathy Setliff, DaLynn Reed, Beverly Cash, Ronda Webb, Becky Combs, Randi Coleman, Pam Plummer, Robin Carneal.



*Jane Marie Dawson  
Hot Springs Village*



*Sloan Barrett  
Arkadelphia*

# ENTERTAINMENT AND PRODUCTION

## Production

Cindy Schopmeyer	Student Director
John Turner	Group Accompaniment Director
Richard Wentz and Shelley Phillips	Host and Hostess Directors
Kelli Lambert	Judges Coordinator
David Dixon and Michael Chesshir	Technical
Jeannie Ross and Suzanne Lively	Group Control
Laura Beth Williams and Jay Beard	Promotion and Tickets
Mac Sisson	OSF Director

## Ouachita Student Foundation Members

Mitch Bettis, President; Joe Silva, Vice President; Robin Felts, Finance Chairman; Jonathon Martin, Vice Chairman of Finance; Anita Murdock and Blake McKinney, Student Recruitment Co-Chairmen; Cindy Schopmeyer, Special Programs Chairman; Kiki Schleiff, Education/Promotion Chairman; Sarah Thompson, Student-Alumni Chairman; Justin Gilbert, Shelley Leslie, Sheila Leslie, Tricia Taylor, Greg Phillips, Suzanne Lively, Yolonda Summons, Tish Campbell, Miranda Childs, Susan Greenwood, Mandy Jones, John Turner, Jay Beard, Scott Snider, Julie Warren, Robyn Smith, Kelli Lambert, Lisa Wheat, Leslie Rowe, Amy Robinson, Lynda Otwell, Amy Ables, Mike Chesshir, Jeff Hall, Grace Mosley, Chuck McClain, Susan Shell, Ellen Childress, David Dixon, Shelley Phillips, Jeannie Ross, John Rothwell, Laura Beth Williams, Nancy Estep, Mike House, Keith Baxter, Andrea Smallwood, Jodi Strother, Shelley Anderson, Carr Parrish

## Combo

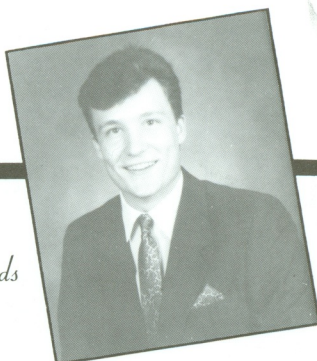
John Turner, Director; Joe Shell, Jeff Madlock, David Clark, Steven Carter

## Special Thanks To...

Dave Ozmun	Video Production
Jay Beard and Laura Beth Williams	Publicity
Dan Cook's	Printing
Walt Kehoe	Food Services
Richard Stipe and Evelyn Bettis	Scheduling
OBU Art Department	Auditorium Decorations
Student Entertainment and Lecture Fund	Refreshments
OBU Maintenance	Set Construction
OBU Signal	Publicity
Gregg Frizzell	Hosts' Fashions
Carousel Boutique	Hostess' Fashions



Montie Edwards  
Norphlet



Lon Vining  
Arkadelphia