

Ouachita Baptist University

## Scholarly Commons @ Ouachita

---

OBU Yearbooks: The Ouachitonian

University Archives

---

1944

### The Ouachitonian 1944

Ouachitonian Staff

*Ouachita Baptist University*

Follow this and additional works at: <https://scholarlycommons.obu.edu/yearbooks>



Part of the [Higher Education Commons](#), [Organizational Communication Commons](#), and the [Public Relations and Advertising Commons](#)

---

#### Recommended Citation

Ouachitonian Staff, "The Ouachitonian 1944" (1944). *OBU Yearbooks: The Ouachitonian*. 5.  
<https://scholarlycommons.obu.edu/yearbooks/5>

This Book is brought to you for free and open access by the University Archives at Scholarly Commons @ Ouachita. It has been accepted for inclusion in OBU Yearbooks: The Ouachitonian by an authorized administrator of Scholarly Commons @ Ouachita. For more information, please contact [mortensona@obu.edu](mailto:mortensona@obu.edu).



*Machitonian*

1944

# C O O N T T E E N N T T S S



BUILDING SECTION

FACULTY SECTION

C L A S S SECTION

A C T I V I T I E S SECTION

S P O R T S SECTION



RILEY LIBRARY

Published by the Students of  
OUACHITA COLLEGE  
Arkadelphia, Arkansas

# THE OUACH





# ITONIAN

1 9 4 4

by the Students  
CHITA COLLEGE  
Fayetteville, Arkansas



WVE



Francene Lynch, Editor

---

Clyde McCalman, Bus. Mgr.

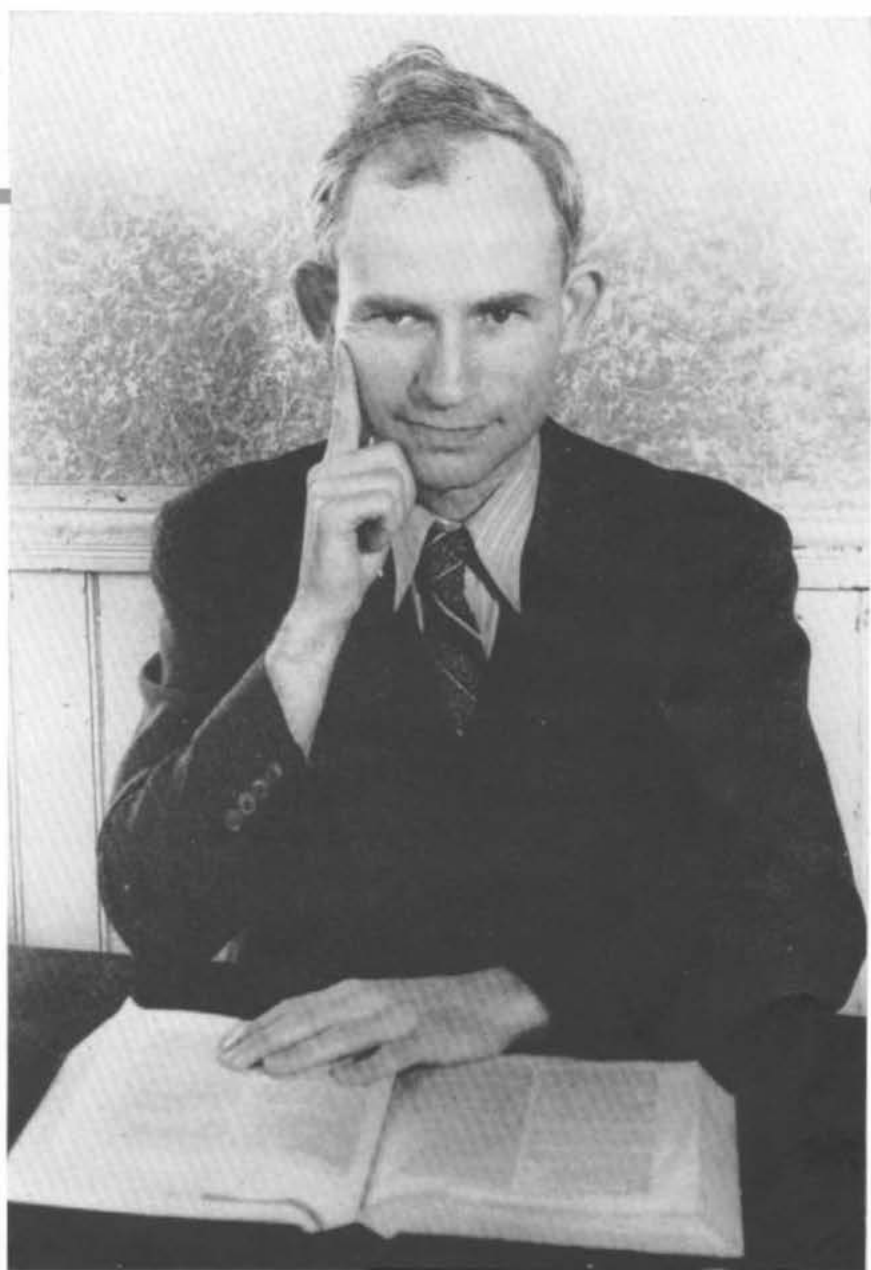


---

To RICHARD CAMPBELL PETTIGREW,

Ph. D., Professor of Humanities; because we have found in him a sincere and capable leader; because of his cordial interest in the development of his pupils, his hospitable personality which has sent many students rejoicingly toward the future, his patience which never tires, his ability to make all subjects amusing and useful, his striking sense of humor, his unlimited cleverness, and his giving his life to those unworthy of such love, we respectfully and admiringly dedicate this—the 1944 Ouachitonian.





DEDICATION

3164



---

# Auditorium

---

GYMNASIUM

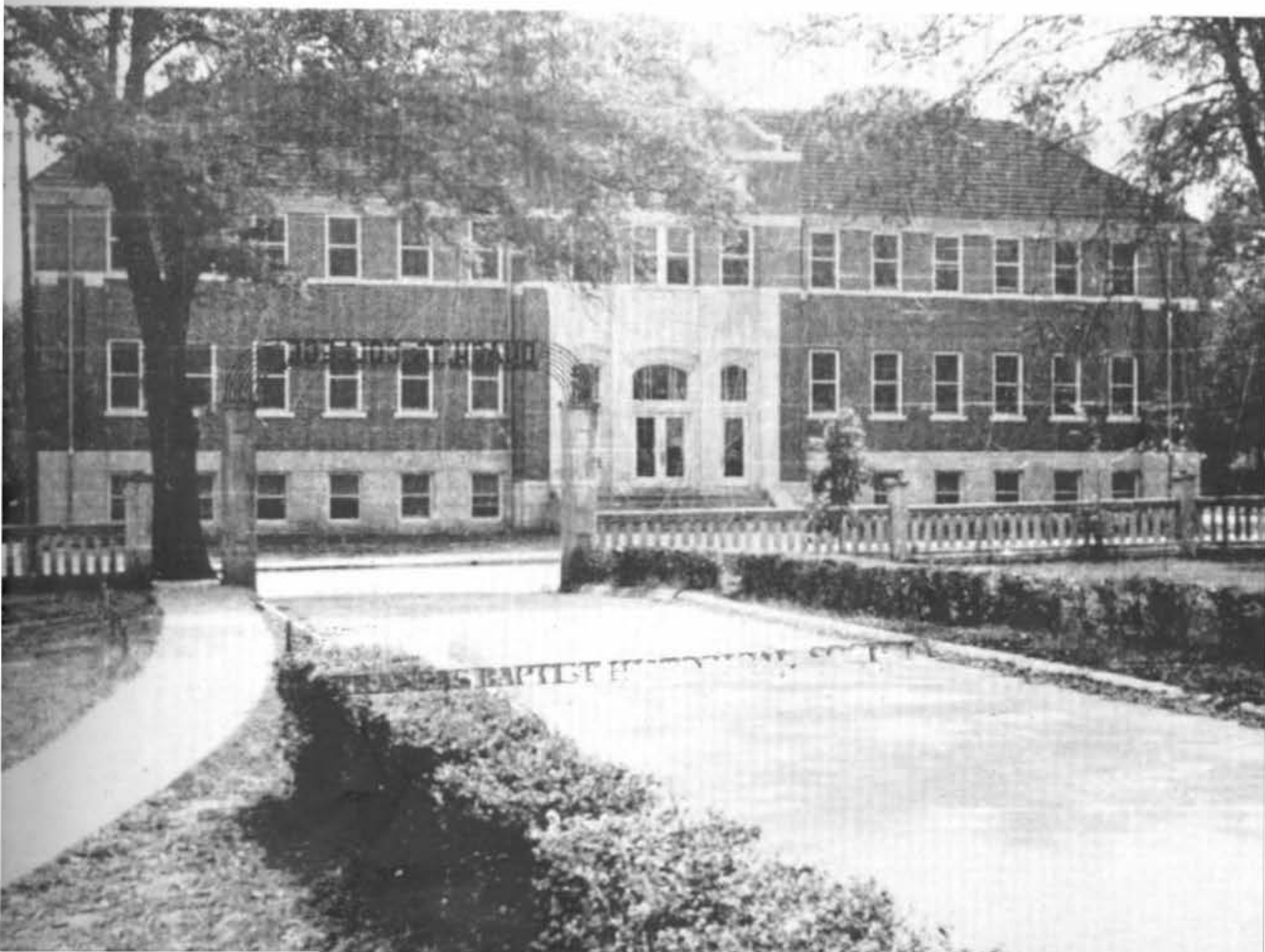
WALLIS HALL

LITTLE THEATRE

DINING HALL

MUSIC CONSERVATORY

ARKANSAS BAPTIST HISTORICAL SOCIETY





Flenniken Memorial

# Faculty



# LETTER

to the

# STUDENTS

OUACHITA COLLEGE  
ARMAHLEPEDIA, ARKANSAS

OFFICE OF THE PRESIDENT  
J. R. GRANT

Dear Students:

War or no war, you are in the race for success. Competition is keen. All your friends are voting for you, but your victory depends on how you conduct your campaign.

To win the race you must not:

1. Steal, cheat, lie or defraud
2. Be afraid of others, of self or of work
3. Give way to anger or worry
4. Let your life be ruled by envy or hatred
5. Depend on your relatives and friends

To win this race you must:

1. Work. There is no substitute
2. Plan your work and work your plans
3. Be true to yourself and your employer
4. Cooperate with others cheerfully and efficiently
5. Believe in yourself, in your neighbor, in God

The faculty is voting for you. Our one purpose and desire is to teach you, to inspire you, and to guide you, so long as our services are needed. Use us. Let us support you.

Sincerely,

*J. R. Grant*  
J. R. Grant  
President



DR. J. R. GRANT



AUBREY MILTON WITHERINGTON

PH. D.

*Professor of Social Sciences*

(Education)



OTIS WEBSTER YATES

PH. D.

*Professor of Social Sciences*

(Religious Education)



RALPH CUSTER DAILY

PH. D.

*Professor of Social Sciences*

(History and Political Science)



RICHARD CAMPBELL PETTIGREW

PH. D.

*Professor of Humanities*

(English)



EUGENE ALMARINE PROVINE

PH. D.

*Professor of Science*

(Chemistry)



LIVINGSTON HARVEY MITCHELL

*Professor of Fine Arts*





D. M. SEWARD, Ph. D.  
Professor of Science (Math and Physics)

WAYNE WARD, B. A.  
Civil Air Regulations



ROBERT MURPHY  
Physics

ANNA HOLT, M. A.  
Associate Professor of Humanities  
(Foreign Languages)



ALFRED VANSANT  
History

KATHRYNE JONES  
Math



MRS. H. L. WINBURN, B. A.  
Dean of Women

FAY HOLIMAN, B. A.  
Assistant Professor of English



COACH R. A. COWAN, M. A.  
Director of Physical Education (Men)

MRS. R. A. COWAN, B. A.  
Director Physical Education (Women)

MARTHA NELL WARREN, B. A.  
Instructor in Art and Math

E. L. McDONALD, B. A.  
Instructor in Journalism

MRS. J. C. STEWART  
Matron, Men's Dormitory

CAPTAIN J. G. RICHARDSON, B. A.  
Assistant Professor of Military  
Science and Tactics

LIEUTENANT LEVIS  
Assistant Professor of Military  
Science and Tactics

SERGEANT ETHERIDGE, D. E. M. L.  
Assistant Professor of Military  
Science and Tactics

FRANCES CRAWFORD, B. A.  
Registrar

DALE TAYLOR  
Bookkeeper

FRANCES BARBOUR, B. A.  
Student Secretary

IRENE BRANUM  
Women's Nurse

LEONARD PRICE  
Business Manager

MARTHA HAIRSTON, B. A.  
Library Assistant

E. W. BASS, M. S.  
Professor of Economics and Business  
Administration





Miss Batson giving Cherry a few  
 pointers . . . aw gee, Bob and Mrs. is  
 it that bad? . . . thanks for your  
 pleasant smile Pro. Mitchell . . . We  
 love having Mrs. Grant in our college  
 life . . . charming Miss Harrington . . .  
 King of the Ping Pong Game—our own  
 Doc Wallace . . . Builder of American  
 homes, Miss Plant.

# CLASS SECTION





CLASS OFFICERS

- ALVIS CARPENTER . . . . . *Vice-President*  
GERTRUDE AUGHEY . . . . . *Secretary*  
SAM PHILLIPS . . . . . *Reporter*  
SAM HOLEMAN . . . . . *President*  
R. E. POST . . . . . *Treasurer*



FRESHMEN...

ADAMS, JOE DAVID . . . . . England

AUGHEY, GERTRUDE . . . . . Memphis, Tenn.

AUTEN, JACK . . . . . Judsonia

AUTEN, JACK, MRS. . . . . Judsonia

BAKER, MAXINE . . . . . Malvern

BALL, THOMAS . . . . . Monette

BEANE, CALMORE . . . . . Paragould

BEATY, MAYMIE . . . . . Memphis, Tenn.

BIGGS, ELEANOR . . . . . Little Rock

BIRCHER, MARY FRANCES . . . . . Texarkana, Texas

BLACKWOOD, RAYMOND . . . . . Arkadelphia

BLED SOE, TROY . . . . . N. Little Rock

BLENDEN, CAROLYN . . . . . N. Little Rock

BOURNS, GEORGE . . . . . Haynes

BOYD, LOIS M. . . . . Arkadelphia

BURGESS, DOROTHY JEAN . . . . . Crossett

CAMPBELL, BETTE LEE . . . . . Okmulgee, Okla.

CAMPBELL, CHARLENE . . . . . El Dorado

CARPENTER, ALVIS . . . . . Elaine

CASEY, OLA JANE . . . . . El Dorado

CASKEY, CAROLYN . . . . . Des Arc

CHILDRESS, DOROTHY . . . . . DeWitt

CHILDRESS, ROSEMARY . . . . . Little Rock

CLIFFORD, ALICE JEAN . . . . . Paragould



CORNISH, DORIS . . . . . N. Little Rock  
 CROW, BLAKE . . . . . Prescott  
 DAILY, SUE . . . . . Arkadelphia  
 DITTO, THOMAS . . . . . Vine Grove, Ky.  
 DAVIDSON, FRANKIE . . . . . Tillar

DAVIS, NORMA RAE . . . . . Booneville  
 DEATON, BILLY FRED . . . . . Little Rock  
 DORMAN, B. L. . . . . El Dorado  
 DOTSON, MARY CATHERINE . . . . . Nashville, Ark.  
 DUDNEY, GEORGIA RUTH . . . . . Washington

DUFFER, RUSSELL, MRS. . . . . Lake City  
 ELLIOTT, MARTHA . . . . . Hot Springs  
 EPTON, T. L. . . . . Nashville, Ark.  
 FELTON, JARRELL . . . . . Smackover  
 FINKBEINER, RUBY . . . . . Perryville

FRANKS, BETTY JO . . . . . Hot Springs  
 GASTON, BEN . . . . . Harrison  
 GARNER, HELEN MARIE . . . . . Wyville  
 GAYLOR, BILLIE JEAN . . . . . El Dorado  
 GLOVER, BILLIE SUE . . . . . Booneville

GRAY, MARY ANNA . . . . . Pine Bluff  
 HALL, J. W. . . . . N. Little Rock  
 HAMILTON, HAROLD . . . . . Glenwood  
 HARRIS, JAMES . . . . . Greggton, Texas  
 HAWKINS, JOHN E. . . . . Dermott

HAYNES, DEWAYNE . . . . . Wilmot  
 HELTON, MARY L. . . . . Star City  
 HEMPHILL, GROVER . . . . . Little Rock  
 HERNDON, GENIDA . . . . . Hot Springs  
 HICKS, BETTY JO . . . . . Malvern

HILE, ENA . . . . . Murfreesboro  
 HODGES, MARY BOB . . . . . Forrest City  
 HOGUE, IRMA . . . . . Center Ridge  
 HOLEMAN, JOHN S. . . . . Hamburg  
 HOLT, RUTH . . . . . N. Little Rock

HOLT, UNA MAE . . . . . Texarkana, Texas  
 HORNE, MARGRETE . . . . . Ft. Smith  
 HOWLETT, MARY LEE . . . . . Texarkana, Texas  
 HUGHES, CLAUD, MRS. . . . . Opal  
 CORNELL, DORIS . . . . . Little Rock

*Ouachita, we sing thy praises,*





IRWIN, WANDA . . . . . Van Buren  
 JAMES, O. D. . . . . Dallas, Texas  
 JOHNSON, JAMES . B. . . . . Monette  
 JOHNSTON, MABEL . . . . . Vandervoort  
 JOHNSTON, WINIFRED . . . . . Texarkana, Texas

KELTNER, BILLIE . . . . . Brinkley  
 KELLEY, WALLACE . . . . . N. Little Rock  
 KINARD, PEGGY . . . . . El Dorado  
 KING, LLOYD . . . . . Bearden  
 KRISSELL, EDITH . . . . . Humphrey

LACY, BETTY JO . . . . . Mountain Pine  
 LADY, MARY JULIA . . . . . Trumann  
 LEE, NELVA . . . . . Gurdon  
 LEWIS, JIMMIE . . . . . Little Rock  
 LOEWER, MARTHA . . . . . Goodwin

LONON, FAYE . . . . . Gassville  
 LYON, DORTHA . . . . . Scott  
 MARTIN, CHARLES F. . . . . N. Little Rock  
 MIDKIFF, J. T. . . . . Wynne  
 MORRISON, ALICE . . . . . El Dorado

MORTON, REX . . . . . Little Rock  
 MURRAY, BILLIE SUE . . . . . Nashville, Ark.  
 MCBRYDE, AILEEN . . . . . Star City  
 MCGHEE, NINA . . . . . England  
 MCDANIEL, VIRGINIA . . . . . -----

McLAIN, ESTER . . . . . Gurdon  
 McLAIN, RUTH . . . . . Gurdon  
 NEWCOMB, MARY JO . . . . . Blytheville  
 NOBLES, DONALD . . . . . Star City  
 NORFLEET, DANIEL . . . . . Tuckerman

NORRIS, LOUISE . . . . . Siloam Springs  
 NUTT, GWENDOLYN . . . . . Paragould  
 OVERTON, DEWEY . . . . . Arkadelphia  
 PERSON, EDWARD . . . . . Marvell  
 PHILLIPS, LOREEN . . . . . Montrose

PITTMAN, ALICE BETH . . . . . Hermitage  
 POINDEXTER, BETTYE . . . . . Booneville  
 POST, R. E., JR. . . . . Texarkana, Texas  
 POWELL, WILLIE DEAN . . . . . Searcy  
 PURCELLY, GEORGE . . . . . Lewisville

Thy beauty, thy power, thy fame



QUINN, RUTH ELLEN . . . . .	Elaine
RAMSEY, HAZEL . . . . .	El Dorado
REECE, CLO DELL . . . . .	Norman
RENFROE, LILLIE MAE . . . . .	Dermott
ROSS, SHIRLEY STATON . . . . .	DeWitt
RHODES, CAROLYN . . . . .	Hot Springs
ROSCOE, DALLAS . . . . .	Smackover
SCHINN, NEALLY . . . . .	Gallion, La.
SCHMITZ, BETTY LEE . . . . .	Henderson, Ky.
SCOTT, CHARLENE . . . . .	Booneville
SCRIMSHIRE, ANIECE . . . . .	Malvern
SECOY, E. C. . . . .	Lake Village
SHEPPARD, IMOGENE . . . . .	Junction City
SHOFFNER, MARY FRANCES . . . . .	Searcy
SIMMONS, MARY FRANCES . . . . .	Texarkana, Texas
SLADE, MILDRED . . . . .	El Dorado
STEELY, ARTHUR . . . . .	Calico Rock
STEPHENS, MARINELL . . . . .	Searcy
THOMAS, JOYCE . . . . .	Curtis
TRAMMERLL, CHARLES . . . . .	
VERMILLION, CHARLES . . . . .	Texarkana, Texas
WALKER, EDITH . . . . .	Viola
WALLS, JOYCE . . . . .	Blytheville
WATKINS, HELEN RUTH . . . . .	Hot Springs
WHEELIS, MARY ANN . . . . .	Ashdown
WHISENHUNT, JEANNE . . . . .	Norphlet
WILSON, VERA JANE . . . . .	Memphis, Tenn.
WOOD, HENRY . . . . .	N. Little Rock
YOUNG, TOMMY . . . . .	Texarkana, Texas

Each loyal heart up-raises





1. Good pals.
2. Southern B
3. You guess  
High Hat pl
4. Come on,  
us a song.
5. Good after
6. All perche
7. Any mail f  
Doc?
8. Got to hu  
finish this e  
ment.
9. Hold up th  
second.
10. Royalty.
11. Winter tin
12. Let's see,  
how do I
13. S'matter P
14. Road anay  
strategic  
tion.
15. Please f  
pretty  
sir.
16. Yum, Y  
must be  
Suste.
17. All set  
ready fo  
choir trip.
18. More fun  
Oh, yeah!
19. On parade



CLASS OFFICERS

MARY FRANCES SADLER . . . *Secretary*

CHARLES ROSE . . . *President*

CHARLENE REMLEY . . . *Vice President*

SOPHOMORES...





AMASON, CARL  
*El Dorado*

ARMER, RUSSELL  
*Santa Ana, Calif.*

ASHCRAFT, THOMAS  
*Malvern*



ATKINS, MARCELINE  
*Prescott*

BAKER, G. MAXWELL  
*Malvern*

BARKER, PHYLLIS  
*Rector*



BASS, JEANNE  
*Arkadelphia*

BERRY, FRED  
*Arkadelphia*

BLOUNT, LILA LEE  
*Little Rock*



BLY, JACQUELINE  
*Pocahontas*

BUMPAS, CLAUD  
*ALMYRA*

CALDWELL, FRED  
*Ashdown*

CASKEY, ELLEN BESS  
*Des Arc*



COCHRAN, BETTY  
*Corning*

COCHRAN, LAURA JANE  
*Bradley*



COPELAND, REXALL  
McGehee

CORLEY, DONALD  
West Helena

CROWDER, NETTIE LOU  
Gurdon



CROXTON, JO BETH  
Monticello

CUTSINGER, EARL  
Morrilton

DEES, MARGIE  
Smackover



DOTSON, ORAS  
Nashville

DOVER, OLITA  
Battles

DUFFER, RUSSELL  
Lake City



ELLIOTT, WYLEY JOE  
Paris

ELLIS, ELIZABETH  
Bauxite

FRENCH, MARY JESS  
Rector



GARDNER, KATHLEEN  
Tupelo

GILLESPIE, BETTY  
Gurdon

GRIGSON, HORACE  
Texarkana



Here's good luck to Ouachita



HANSEN, GENEVIEVE  
*Almyra*

HARRIS, MARTHA FRANCES  
*Arkadelphia*

HARVILL, MONTINE  
*Humphrey*



HAYS, SALLY JANE  
*Waldo*

HENIGAN, ANNE  
*Little Rock*

HOLLAND, CHARLES  
*Hamburg*



HUBBARD, MARGART SUE  
*Elaine*

HUGHES, CLAUD  
*Opal*

JERNIGAN, MARY NELL  
*Hayti, Mo.*



JOHNSON, JEANNETTE  
*Little Rock*

JONES, MARGARET  
*Junction City*

JOWERS, MARTHA NELL  
*Newport*



LAWRENCE, WILLADEEN  
*Cherry Hill*

LOEWER, KATHRYN  
*Goodwin*

MARTINDALE, E. O.  
*Levy*

*May all her skies be gay,*

MATHIS, QUINCY  
*Arkadelphia*

MAXWELL, JANICE  
*Louann*

MAY, BOBBY JEAN  
*Arkadelphia*



MEHAFFEY, HOMER PAT  
*Atlanta*

MILLSAPPS, LEATRICE  
*Ashdown*

MITCHELL, MILDRED  
*Nashville*



MURRY, TANNA  
*Prescott*

McMENIS, FREEMAN  
*Murfreesboro*

ORR, NANCY LEE  
*Hot Springs*



PARROT, ELENE  
*Tuckerman*

PHILLIPS, SAM  
*Texarkana*

PIERCE, MRS. STANFORD  
*Wilmington*



PORTER, S. D.,  
*Portland*

REAMEY, DORIS  
*Hot Springs*

REMLEY, CHARLENE  
*Monticello*



Give a cheer for Ouachita



ROWE, JACK  
Nashville

SANDIFER, LYNELL  
Arkansas City

SCHUH, BETTY JO  
Paragould



SCOTT, CAROLYN  
Nashville

SEEFELT, VERNELLE  
Paris

SEXTON, KATHERINE  
England



SHELTON, ELMER  
Epps, La.

SMITH, BILLIE SUE  
Arkadelphia

SPARLER, HERBERT  
Pine Bluff



SPOTTS, FRANCES  
West Memphis

STEPHENSON, SARA  
Prescott

STEWART, BONNELL  
Hot Springs



SWAIM, MARIE ANN  
England

TANKERSLY, LOIS  
Ft. Smith

TATUM, BETTY  
Little Rock

*A loud hip - hip hooray,*

TAYLOR, FRANCES  
Hamburg

THOMAS, IRIS  
Curtis

THOMPSON, SUANNE  
Little Rock

TOLLESON, ARLINE  
Arkadelphia

TURNER, MARTHA  
Arkadelphia

WARD, ALMA MAE  
Piggott

WARD, HIRAM  
Not pictured

WESSON, MARY  
North Little Rock

WHITE, HAROLD  
Hamburg

WHITTEN, JOYCE  
Trumann



1. Ouachita's Beauties.
2. Pappy's Gal.
3. There was an Irish girl.
4. Collegiate.
5. Burr-r-r-r.
6. We believe you.
7. Thanks for the grin!
8. Some scene (cene).
9. Just A Wearyin' for You.
10. "War Widows".
11. Nice Weather, eh?
12. We stop only for blondes, brunettes, and red heads!

O - u - a - c - h - i - t - a !



1. Arkadelphia Scout Troop.



2. Sittin' pretty.



3. B. S. U. Convention. . . . Supply recess.

4. Another recess

5. Up to date transportation.



6. Sh-h, convention's the word



7. Freshmen "gentlemen." What said that?

8. Friendship, is courtship . . . marriage eventually.



9. Leaving the convention. Good bye.



10. Waiting for parade.

11. Three Musketeers.



12. Scrub ha boys!

13. Good acting anyway.



14. Just girls.

15. Roommates.

16. Same old story

17. Say this is a thing monotonous! Sweet though. Eh, Don?



18. More parade.

19. What's the menu for today



20. Strange Interlude at the parade.



CLASS OFFICERS

- DALE COWLING . . . . . *President*  
DOROTHY THOMAS . . . . . *Vice President*  
CLYDE McCALMAN . . . . . *Treasurer*



JUNIORS...



BAKER, GLEN . . . . . *Penns Grove, N. J.*  
 BEINDORF, CHARLETA . . . . . *Tulsa, Okla.*  
 BEINDORF, FRANCES . . . . . *Tulsa, Okla.*  
 BLACKWOOD, OLIVE . . . . . *Rector*  
 BRANUM, IRENE . . . . . *Bunceton, Mo.*

BRASHEARS, FRANCES . . . . . *Kilgore, Tex.*  
 COCHRUM, BECKY . . . . . *Little Rock*  
 COOPER, S. M. . . . . *Viola*  
 CORNELL, CHARLES . . . . . *Little Rock*  
 CRAWFORD, BETTY . . . . . *Arkadelphia*

*Ouachita, thy sons and daughters,*





DeBELL, SHIRLEY . . . . . Keiser  
 ELDRIDGE, B. E. . . . . Leachville  
 ELDRIDGE, MRS. B. E. . . . . Leachville  
 EVANS, ALICE . . . . . Alix  
 FOWLER, ROBERTA . . . . . Friendship  
 FLYNT, BILL . . . . . Lonoke

FOX, ANNE . . . . . De Witt  
 FOX, EVELYN . . . . . Manila  
 GLADDEN, JESSE . . . . . Caddo Gap  
 GOODWIN, FAYE . . . . . Rushing  
 GRANT, DANIEL . . . . . Arkadelphia  
 GRAY, THOMAS . . . . . Arkadelphia

*Will carry thy flag unfurled*



GUY, DOROTHY JEAN . . . . . Monticello  
 HALL, LELAND . . . . . Little Rock  
 HARDEN, HELEN . . . . . Helena  
 HARRIS, JOE ED . . . . . Lockesburg  
 KERSH, BILL . . . . . Fort Smith

LAWRENCE, NORMA JO . . . . . Oden  
 LYNCH, FRANCENE . . . . . Arkadelphia  
 MATHEWS, CHERRY . . . . . Little Rock  
 MILLER, DILLARD . . . . . Texarkana  
 MCCALMAN, CLYDE . . . . . Bradley

*For none shall e'er surpass thee*



OSBORNE, FRANCES . . . . . Hope  
 PATTERSON, JUNE . . . . . Lundell  
 PHILLIPS, WILMA HELEN . . . . . Gould  
 PIERCE, C. R., . . . . . Forrest City  
 PIERCE, STANFORD . . . . . Wilmot

PITTS, ELISE . . . . . Harrisburg  
 PONDER, JOYCE . . . . . Little Rock  
 PUGSLEY, EDNA MAE . . . . . West Helena  
 ROBERTS, ORVILLE . . . . . North Little Rock  
 ROBERSTON, CHARLIE . . . . . Marmaduke

The queen of the College World



RUDOLPH, BARBARA . . . . . *Arkadelphia*  
 SADLER, MARY FRANCES . . . . . *Paris*  
 SHRYOCK, JOYCE LEE . . . . . *Little Rock*  
 STRIPLING, CLAUD . . . . . *Little Rock*  
 THOMAS, DOROTHY . . . . . *Curtis*  
 WAGNON, A. W. . . . . *Fouke*

WATTS, WALTER . . . . . *Scranton*  
 ROBINSON, VIRGINIA . . . . . *Jonesboro*  
 WELSH, THOMAS J. . . . . *Kilgore, Texas*  
 WELSH, THOMAS J., MRS. . . . . *Kilgore, Texas*  
 WELLS, BOB . . . . . *Branch*  
 WHARTON, BILL . . . . . *Green Forest*

O-u-a-c-h-i-t-a!



CLASS OFFICERS

BERNICE HALEY . . . . . Senator

LEHMAN WEBB . . . . . President

MARILYNN THOMAS . . . Vice-President



SENIORS...



GARLAND ALLEN, B. A. . . . . Tuckerman  
*"He knows exactly what he's about."*  
 Major: Bible. Minor: English.  
 Life Service Band 1-2-3-4; Vice President 2;  
 Ministerial Association 1-2-3-4; Secretary 3-4;  
 English Honor Society.

JIMMIE BEALS, B. S. . . . . North Little Rock  
*"Bold, quick, ingenious, forward, capable."*  
 Majors: Biology, Chemistry.  
 Red Shirts 2-3-4. Chemistry Club 1-2-3-4.  
 Ouachita Band 1-2-3. Lab. Assistant 3-4.



OLIVE BLACKWOOD, JR.

BILLIE BLAYLOCK, B. S. . . . . Little Rock  
*"Her laughter is contagious."*  
 Major: Biology. Minor: Chemistry.  
 EEE 1-2-3-4; President 4; Biology Lab Assistant  
 2-3-4; Campus Who's Who 4; Y. W. A. Cabinet  
 2.



SUSAN BOW, B. S. . . . . Bentonville  
*"Love is a queer and wonderful thing."*  
 Major: Home Economics. Minor: Science.  
 Home Economics Club 1-2-3-4; Phi Beta Chi,  
 charter member, 4; Chemistry Club 1; Symphonic  
 Choir 1-2-3; Piano Class 1-2-3-4.

MARY ALICE BURNS, B. M. . . Pineville, W. Va.  
*"Sometimes quiet, sometimes gay, but always  
 fun."*  
 Major: Violin. Minor: Piano.  
 Little Symphony 1-2-3; Piano Class 1-2-3-4; Band  
 3; Who's Who In American Colleges and Uni-  
 versities 4.



EDITH CHAPMAN, B. A. . . . . Earle  
*"Nice things are often done up in small  
 packages."*  
 Major: English. Minor: History.  
 A. R. C. 2-3-4; President 4; Ouachita Players  
 2-3-4; Vice-President Girl's Student Government  
 4; Y. W. A. Cabinet 2; International Relations  
 Club 4; English Honor Society 4.

MILLARD ROSS CHERRY, B. A. . . Franklin, Ky.  
*"Ever looking for the opposite sex."*  
 Major: English and Bible. Minor: History.  
 Sigma Alpha Sigma 3-4; Secretary 4; English  
 Honor Society 3-4; President 4; Business Manager  
 of Ripples 4; Ministerial Association 1-2-3-4;  
 Life Service Band 1-2-3-4; International Relations  
 Club 3-4; B. S. U. Council 2-3; Symphonic Choir  
 1-2-3.

Here's good luck to Ouachita.

JOSEPHINE CLEMENTS, B. A. . . . Helena  
*"A pleasing countenance is no slight advantage."*  
 Major: English. Minor: History.  
 International Relations Club 4; Life Service  
 Band 2.



REBECCA COCKRUM . . . . . Junior

MARTHA CORN, B. S. . . . . Little Rock  
*"They say she loves a man in blue."*  
 Major: Home Economics. Minor: Science.  
 A. R. C. 1-2-3-4; Secretary and Treasurer 2;  
 President 3; Signal Staff 1-2-3-4; Vice-President  
 Sophomore Class 2; Home Economics Club 2-3-4;  
 Girl's Student Government 2; Y. W. A. Cabinet  
 2; charter member Phi Beta Chi 4; vice president  
 4.



DALE COWLING . . . . . Junior

HELEN CRAWFORD, B. S. . . . . Arkadelphia  
*"Dependable, loyal—a true friend."*  
 Major: Home Economics. Minor: Science.  
 Home Economics Club 1-2-3-4; Treasurer 4;  
 Home Economics Lab Assistant 4; Chemistry  
 Club 2; Life Service Band 3-4; Signal Staff 4;  
 charter member Phi Beta Chi 4; Historian 4.



OPAL CRUTCHFIELD, B. S. . . . . Waldron  
*"Those who are silent really have the most to  
 talk about."*  
 Major: Home Economics. Minor: Science.  
 Chemistry Club 1; Home Economics Club 1-2-  
 3-4; president 4; Home Economics Lab Assistant  
 4; charter member Phi Beta Chi 4; secretary 4.

PHYLLIS DAILY, B. A. . . . . Arkadelphia  
*"She needs no recommendation."*  
 Major: English. Minor: Biology and Speech.  
 Piano Class 1; Ouachita Players 1-2-3-4; re-  
 porter 4; Life Service Band 2-3-4; B. S. U. Council  
 2-3; Ripples Staff 3; English Honor Society 3-4;  
 treasurer 4; Who's Who in American Colleges  
 and Universities 4.



DORTHA LEE DAVIS, B. A. . . . . Rogers  
*"Oppressed by two evils—classes and work."*  
 Major: History. Minor: English and Econo-  
 mics.  
 International Relations Club 2-3-4; Girl's Stu-  
 dent Government 4; Who's Who in American  
 Colleges and Universities 4.

May all her skies be gay,



JOHN EDRINGTON, B. A. . . . . Pocahontas  
*"I took all courses, including campusology."*  
 Major: History. Minor: Math.  
 International Relations Club 2-3-4; treasurer 4;  
 Math Honor Society 3-4; Vice-president 4; Rho  
 Sigma 4.

MARIE HARDWICK, B. A. . . . . Arkadelphia  
*"Who put those stars in her eyes?"*  
 Major: Bible. Minor: English.  
 Life Service Band 1-2-3-4.



RUTH HENNING, B. A. . . . . Des Arc  
*"God bless the man who invented sleep."*  
 Major: English Minor: Business Administration.  
 W. C. F. 1-2-3-4; Ouachita Players 4; Vice-  
 President Y. W. A. 2; President: Girl's Student  
 Government 4. English Honor Society 4.

BETTY LOU STANFILL . . . . . Junior



Annie Hoover, B. A. . . . . North Little Rock  
*"Small but oh so mighty;:"*  
 Major: Bible. Minor: English.  
 Transfer from Central College, Conway; Life  
 Service Band 3-4; Volunteer Band 3-4.

IRENE LESTER, B. A. . . . . Lewisville  
*"For Sale"*  
 Major: Piano. Minor: Voice.  
 Piano Class 1-2-3-4; Secretary-Treasurer 4; W.  
 C. F. 2-3-4.



CHARLES B. LUCK, B. A. . . . . Arkadelphia  
*"Steadfast and true to God."*  
 Major: Bible. Minor: Speech.  
 Ministerial Association 1-2-3-4.

MARY KATHERYN MARTIN, B. S. H. E. DeWitt  
*"May fortune be kind to you, happiness true to  
 you, and life long to you."*  
 Major: Home Economics. Minor: Science and  
 Education.  
 Home Economics Club 1-2-3-4; Reporter 4; char-  
 ter member of Phi Beta Chi; College Band 1-2-3-  
 4; Secretary of Student Senate 3; Signal Staff 4;  
 Senior Class Editor of Ouachitonia 4. Assis-  
 tant Editor of Ouachitonia 4.

Give a cheer for Ouachita



CLYDE McCALMAN . . . . . Junior

NAOMI McKEE, B. S., H. E. . . . Lebanon, Mo.  
"Paratrooper."

Major: Home Economics. Minor: Science and Education.

Home Economics Club 1-2-3-4; Reporter 2; Vice-President 3; President 4; Charter member of Phi Beta Chi; W. C. F. 1-2-3-4; Hi-Ayer 3-4; Signal Staff 3-4; Secretary of Class 4.



CARR LEMOINE MOORE, B. A. . . . . Dumas  
"Two sided—serious and humorous."

Major: English. Minor: Bible.

IRWIN MOSHIER, B. A. . . . . Booneville  
"As good all round as can be found."

Major: Bible. Minor: Speech.

Ministerial Association 1-2-3-4; Life Service Band 1-2-3-4; Vice-President 1; Band 2-3; Little Symphony 2-3; Ouachita Players 2-3-4; Alpha Psi Omega 4.



LOUIS GENE NICHOLS, B. A. . . . . Warren  
"It is a great plague to be too handsome a man."

Major: Business Administration. Minor: English.

Sigma Alpha Sigma 1-2-3-4; President 4; Who's Who in American Colleges and Universities 4; Campus Who's Who 3; "O" Association 1-2-3; Football 1-2-3; Track 1-2-3; All State Basketball 1-2-3; Winner of Neil Martin Athletic trophy 4; Ouachitonian Staff 2-3.

MRS. ELIZABETH PARROTT, B. A. . . . Harrisburg  
"Beautiful, loveable, capable."

Major: English. Minor: History.

English Honor Society 4. Life Service Band 3-4.



JOHN PARROTT, B. A. . . . . Tuckerman  
"Character is the diamond that scratches all other stones."

Major: Bible. Minor: English.

Ministerial Association 1-2-3-4; Life Service Band 1-2-3-4; Chorister 1; Treasurer 2; Vice-President 3; Beta Beta 2-3-4; Secretary 2; President 4; Business Manager of Ripples 3; Ouachita Players 3-4; President of Class 3; President of Student Senate 4; Who's Who in American Colleges and Universities 3-4.

GEORGE PRIDDY, B. A. . . . . Dumas  
"In spite of all the learned may say, I still my own opinion keep."

Major: Bible. Minor: Speech.

Life Service Band 1-2-3-4; Ministerial Association 1-2-3-4; "O" Association.



A loud hip - hip hooray.



VIRGINIA QUEEN, B. M. . . . Hot Springs  
*"Music soothes us and erases life's hurdles."*  
 Major: Piano. Minor: Organ.  
 Cecilian Club 1-2; reporter 2; Piano Class 1-2-3-4; President 4; Symphonic Choir pianist 3-4.

CHARLENE QUICK, B. A. . . . Little Rock  
*"Sparkling, gay, refreshing."*  
 Major: Home Economics. Minor: Education.  
 Kewpie Klub 1-2-3-4; Chief 4; Beauty 1-2-3-4; Campus Who's Who 1; Ouachita Players 2-3-4; Home Economics Club 3-4; charter member Phi Beta Chi.



BETTY RAMAY, B. M. . Oklahoma City, Okla.  
*"Everyone's friend."*  
 Major: Piano. Minor: English.  
 Piano Class 1-2-3-4.

CAROLYN RICHARDSON, B. A. . . Little Rock  
*"As friendly as she is beautiful."*  
 Major: Speech. Minor: English.  
 Kewpie Klub 1-2-3-4; Beauty 1-2-3-4; Campus Who's Who 4; Ouachita Players 1-2-3-4; Alpha Psi Omega 4; director 4; Junior Carnival Maid 1; Girl's Student Government 3.



C. H. SEATON, B. A. . . . Little Rock  
*"Worry will never make me great, so why worry?"*  
 Major: Bible. Minor: English.  
 Rho Sigma 4; Ministerial Association 1-2-3-4; Life Service Band 3-4.

T. N. SHADDOX, B. A. . . . Arkadelphia  
*"Voice of the people."*  
 Major: Bible and Speech.  
 Signal Staff 1-4; Editor of Signal 4; Ouachita 3-4; Alpha Psi Omega 4; Ministerial Association 1-2-3-4; Life Service Band 3-4; Symphonic Choir 1-2-3; reporter Camera Club 1.



JOHN ED STEELEY, B. A. . . . Calico Rock  
*"There's no substitute for thorough going, ardent, and sincere earnestness."*  
 Major: Bible. Minor: English.  
 Ministerial Association 1-2-3-4; Life Service Band 1-2-3-4; Epsilon Omega Sigma 3-4; Who's Who in American Colleges and Universities 4; Symphonic Choir 1-2-3-4; student director 4.

FLOYD TAYLOR, B. A. . . . Pine Bluff  
*"Life without girls is a bore—with one, a tragedy."*  
 Major: Bible. Minor: History.  
 Ministerial Association 1-2-3-4; Life Service Band 1-2-3-4; I. R. C. 4.

O - u - a - c - h - i - t - a !

AUTREY THOMAS, B. A. . . . Hartford

*"None might with him compare!"*

Major: Bible. Minor: Speech.

Ministerial Association 1-2-3-4; Life Service Band 1-2-3-4; Ouachita Players 3-4; Band 4; Campus Who's Who 4.



NAOMI THOMAS, B. A. . . .

*"True-hearted, wholehearted, faithful, and loyal"*

Major: Business Administration. Minor: English



A. C. VANSANT, B. A. . . . Jacksonville

*"Let fools the studious despise. There's nothing lost in being wise."*

Major: History. Minor: Bible.

Ministerial Association 3-4; I. R. C. 3-4; Who's Who in American Colleges and Universities 4.

INEZ WEBB, B. A. . . . Thida

*"A true Friend"*

Major: Bible. Minor: History.

Life Service Band 1-2-3-4; I. R. C. 3-4; secretary 4; Assistant Dean of Women 4.



LEHMANN WEBB, B. A. . . . Tuckerman

*"A born leader of men."*

Major: Bible and Speech. Minor: English.

Ministerial Association 1-2-3-4; president 4; Life Service Band 1-2-3-4; Beta Beta 2-3-4; treasurer 2; Ouachita Players 3-4; president 4; Alpha Psi Omega 4; playwright 4; President Senior Class 4.

ROSALEA WEBSTER . . . Junior



MRS. BOB WELLS . . . Junior

EMMA CATHERN WOOD, B. S. . . Arkadelphia

*"To know her better is everyone's desire."*

Major: Home Economics. Minor: Science and Education.

Home Economics Club 1-2-3-4; charter member Phi Beta Chi 4.



BETH CRUTCHFIELD . . . . . B. S.  
*"Sweetness always wins."*  
 Major: Home Ec. Minor: Science.  
 Home Ec. Club 2-3-4, Life Service Band 1-2-3-4.

BERNICE HALEY, B. A. . . . . England  
*"Loved by all in general, but by one in particular"*  
 Major: English. Minor: Speech.  
 Transfer from Central College, Conway; Y. W. A. Cabinet 3-4; Alpha Psi Omega 4; Ouachita Players 3-4; Senator of Senior Class 4.

CHARLES HAMPTON, B. A. . . . . Monticello  
*"I can talk myself out of anything but love."*  
 Major: Bible. Minor: English.  
 Transfer from Monticello A. and M.; Life Service Band 2-3-4; Ministerial Association 2-3-4; Volunteer Band 3-4; President 4.



NETABEL HARDY, B. A. . . . . Magnolia  
*"It is better to wear out than to rust out."*  
 Major: Speech and English.  
 Life Service Band 1-2-3-4; Volunteer Band 3-4; English Honor Society 3-4; Ouachita Players 2-3-4; Alpha Psi Omega 4; Secretary-Treasurer 4.

EDGAR HARVEY . . . . . B. A.  
*"If you don't succeed at first, try, try again."*  
 Major: Bible  
 Ministerial Association 1-2-3-4, Life Service Band 1-2-3-4.

MARILYN HENNING . . . . . B. A.  
*"Living is the most wonderful of all."*  
 Major: Bible. Minor: English.



LUCRETIA HENRY, B. A. . . . . Rector  
*"Ambition is no cure for love."*  
 Major: English. Minor: History.  
 Symphonic Choir 1; Piano Class 2; Treasurer Y. W. A. 3; Ripples Staff 2-4; International Relations Club 3-4; English Honor Society 4.

J. M. HOLDER, B. A. . . . . Pine Bluff  
*"My heart is whole, my fancy free, Run along little girls, don't bother me."*  
 Major: Bible. Minor: History.  
 Ministerial Association 1-2-3-4; Life Service Band 1-2-3-4; International Relations Club 4.

NORMA LEE JOHNSTON, B. A. . . . Ft. Smith  
*"Love is the greatest education—I am educated."*  
 Major: Bible. Minor: English.  
 Transfer from Ft. Smith Jr. College; Life Service Band 3-4; Volunteer Band 3; B. S. U. Council 4; Ministerial Auxiliary 4.



JOHN W. JOHNSTON . . . . . B. A.  
*"If there is a question, I am right."*  
 Major: Bible. Minor: English.  
 Ministerial Association 1-2-3-4, Ouachita Choir 1-2-3, Life Service Band 1-2-3-4.

BILLY LINDVALL, B. S. . . . . Malvern  
*"To know him is to like him."*  
 Major: Chemistry. Minor: Mathematics.

MERTIE MARIE LLOYD, B. A. . . . Arkadelphia  
*"She counts no time wasted that is spent on  
pleasure."*

Major: Business Administration. Minor: Home  
Economics.

Piano Class 1; Little Symphony 1; Symphonic  
Choir 1-2-3; Home Economics Club 1-2-3-4; Life  
Service Band 2.

JAMES LUCK, B. A. . . . Magnolia  
*"If it be a friend and a gentleman that you seek,  
you have found him."*

Major: Bible. Minor: Speech.

Transfer from Magnolia A. and M.; Internation-  
al Relations Club 3-4; Sigma Alpha 3-4; Treasur-  
er 4; Band 3-4; Ministerial Association 3-4.

WELDON MARCUM, B. A. . . . Jonesboro  
*"The aim is perfection, patience, the road."*

Major: Bible. Minor: Speech.

Ministerial Association 4; Life Service Band 4.

BILL MONTGOMERY, B. A. . . . Donaldson  
*"I hardly find any person of good sense save  
those who agree with me."*

Major: Bible. Minor: English.

Ministerial Association 1-2-3-4; Beta Beta 2-3-4;  
Life Service Band 1-2-3-4; B. S. U. Council 3;  
Reporter of Class 3; Class Treasurer 4.

SUE O'NEAL, B. A. . . . Benton  
*"Known by her elfish laugh."*

Major: English. Minor: Speech.

Ouachita Players 1-2-3-4; EEE 4; Ouachitanian  
Staff 4.

ELLOUISE SCRUGGS, B. S. . . . England  
*"Just call her Pud, though."*

Major: Home Economics. Minor: Science.

Transfer from State Teacher's College, Con-  
way; Home Economics Club 3-4; vice-president  
4; President of State Home Economics Club 4;  
charter member Phi Beta Chi 4; president 4;  
Symphonic Choir 3-4; Life Service Band 3-4.

CAROLYN SIMMONS, B. A. . . . Stuttgart  
*"Collegiate."*

Major: English and Speech. Minor: Business  
Administration.

Symphonic Choir 1; Life Service Band 3-4;  
Ouachita Players 2-3-4; Alpha Psi Omega 4;  
Campus Who's Who 4; Epsilon Omega Sigma  
3; Signal Staff 4; Ripples Staff 4; Who's Who  
in American College and Universities 4.

BONNELLE STEWART, B. M. . . . Hot Springs  
*"Quiet but interesting."*

Major: Piano. Minor: Organ.

Piano Class 1-2-3-4.

MRS. CLAUD STRIPLING . . . . . B. A.  
*"A breath of Spring."*

Major: English. Minor: Bible.

Ministerial Auxiliary 1-2-3-4, Life Service Band  
1-2-3-4.

NEVILLE SWAIM, B. A. . . . Helena  
*"To me books are mere playthings."*

Major: English. Minor: Biology.

A. R. C. 2-3-4; treasurer 3; vice-president 4;  
Ripples Staff 2-3; Editor 3; Signal Staff 3; Ouach-  
ita Players 3-4.

MARILYNN THOMAS, B. A. . . . Curtis  
*"She has every right to succeed."*

Major: History and English. Minor: Speech.

Cecelian Club 1; Signal Staff 2-3-4; Ouachita  
Players 2-3-4; Alpha Psi Omega 4; I. R. C. 2-3-4;  
vice-president 3; president 4; Associate Editor  
Ripples 3; Editor of Ripples 4; Epsilon Omega  
Sigma 3-4; Who's Who in American Colleges  
and Universities 4.



Thomas Jones, M. A.



Ouachita lost one of its most valuable possessions when the brilliant Pro Jones died suddenly on May 14, 1943.



Mary Helen Cossey



Members of the Senior class were saddened by the death of their classmate, the talented Miss Mary Helen Cossey.



Don't forget to practice.



Hello Herbert. How are you? And your friend also!

Cute little trick isn't she.

Serious students at heart.



Bill, DeWayne, and P. Hogue.

He never misses.

Not a care.

Someone said a mouthful.

How do you like it here?

Interesting collection.

The speaker must not be boring.

Wait until everyone is served . . . please.

Pretty day for rabbit hunting, eh Annie.

Big night.





Happy walk to the Bookstore.



A view of the chicken coops.



Big shots.



Impressive.



What's next on the program?



You must meet her sometime or other.



Puzzling? (I mean the cat.)



Yes, very cheesy.



Dramatic pose.



Barracks . . . , the soldiers' jail house.



Heilol

Sweet and simple.



Out for a good time . . . (for no good.)



People.



At ease.

Good?

A. Fox.

Proud of new dresses.



Have a tooth pick.



Vivacious!



Waiting . . .





Why so melancholy, kids? . . . . .  
sun, snow, and cupid—hum? . . . . .  
. . . . . Oh, that's all right, they're en-  
gaged . . . . . our freshmen beauties  
do get around; . . . . . yep, they're en-  
gaged, too, eh Jonsey? . . . . . Nope, you're  
wrong there, they're married; . . . . . Beta  
Banquet with Clyde and Billie Sue  
beaming as per-usual;

# ACTIVITY SECTION





# WHO'S WHO

in  
American Colleges  
and Universities



LEHMAN WEBB  
MARILYNN THOMAS  
ALFRED VANSANT  
CAROLYN SIMMONS  
BILL FLYNT  
PHYLIS DAILY  
JOHN PARROTT  
DOROTHY JEAN GUY  
LOUIS GENE NICHOLS  
DORTHA DAVIS  
MARY ALICE BURNS  
DANIEL GRANT  
JOHN ED STEELEY  
SARA BIGGS WELLS

# Campus Who's Who



Bobby Jean May . . . . . Cutest Girl  
 Raymond Blackwood . Life of the Party (Boy)  
 Billie Blaylock . . . Most Intellectual Girl  
 Frances Brashears . Life of the Party (Girl)

Billy Flynt . . . . . Most Popular Boy  
 Carolyn Simmons . . . Most Collegiate Girl  
 Martha Corn . . . . . Cleverest Girl



Carolyn Richardson . . . Most Popular Girl  
 Dorothy Jean Guy . . . Most Versatile Girl  
 Duncan Mitchell . . . Most Collegiate Boy

Daniel Grant . . . . . Most Versatile Boy  
 Most Intellectual Boy, Cleverest Boy  
 Autrey Thomas . . . . . Craziest Boy  
 Dr. Pettigrew . . . . . Cleverest Boy



*Elene Parrott . . . First Choice*



*Billie Sue Glover . . . Second Choice*





SARA STEPHENSON  
Third Choice



MARY FRANCES HARRIS





CAROLYN RICHARDSON



CHARLENE QUICK



*Picture of Mr. Wells  
drawn by J. W. Hall,  
Staff Artist*

## Charles A. Wells

---

CHARLES A. WELLS, WORLD KNOWN  
JOURNALIST, CARTOONIST, AND  
LECTURER!

Ouachita was fortunate to have this distinguished gentleman on her campus for a successful week of lectures, cartoons, and conferences! Ouachita's best wishes, Mr. Wells.

---

"Ye Gods! What  
new misfortunes  
threaten the Greeks?"

—HOMER



## Beta Beta

The Beta Beta is the newest men's club on the campus, being organized in the Fall of 1941 with a two-fold purpose of encouraging fellowship and understanding among the ministerial and lay students, and the development of its members socially, physically, intellectually, and spiritually.

The social events that highlight the year are the two formal banquets, but other informal socials manage to bring a much needed rest from any mental strain that books have brought. The Beta's have an enviable record in the Ouachita intramural program.

### MEMBERS

John Parrott	Bill Montgomery	Earl Cutsinger
Bill Flynt	Oras Dodson	Dan Norphlet
Clyde McCalman	Joe Ed Harris	Jimmy Harris
Dale Cowling	Bill Kersh	Lloyd King
Daniel Grant	Charles Rose	James B. Johnson
Lehman Webb	Thomas Ashcraft	Loyce Nelson

*There is one girl I will never forget, no matter how hard I try--*



## Red Shirts

"To promote and foster a better spirit of school loyalty, to encourage a constant improvement in athletics, to recognize scholarship and extra-curricular activities, and to promote the general welfare of all matters pertaining to Ouachita College." This is the purpose of the Red Shirts.

This club claimed three important dates on the social calendar, including the annual Founder's Day banquet which takes place as near March 6 as possible.

Each Wednesday the red shirts and white ties worn by members distinguish them from other members of the student body.

### OFFICERS

J. A. BEALS	President
GLENN BAKER	Vice President
DOC SIMMONS	Secretary
J. N. SMITH (Not pictured)	Sg.-at-Arms
FRED BERRY	Treasurer
BILL WHARTON	Reporter

### MEMBERS

Hiram Ward	John Edrington	Ira Taylor
Fred Caldwell	Ben Gaston	Troy Bledsoe
Rexall Copeland	Carl Amason	John Hawkins
C. H. Seaton		Jimmie Lewis

*A part of me is hers the neglect somehow I can't realize why--*





## S. A. S.

In 1933 twelve boys organized the S. A. S. which has prospered unusually well.

A social organization instituted to promote good feeling and fellowship among the student body, establish precedents of scholastic achievement, good morals, clean living, leadership, and oppose the practice of undemocratic principles on the campus.

On Wednesday the members wear white slipover sweaters with their insignia on front, and blue ties. Their activities ended with a formal the last of April.

### OFFICERS

LOUIS NICHOLS . . . . .	<i>President</i>
DUNCAN MITCHELL . . . . .	<i>Vice President</i>
MILLARD ROSS CHERRY . . . . .	<i>Secretary</i>
JAMES LUCK . . . . .	<i>Treasurer</i>
DUNCAN FLANIGAN . . . . .	<i>Sergeant-at-Arms</i>
JACK ROWE . . . . .	<i>Reporter</i>

### MEMBERS

Alvis Carpenter  
Wyley Joe Elliott  
Sammy Holman

Wallace Kelley  
Billie Keltner

Rex Morten  
Sam Phillips  
George Purcelly

*Varsity girl where are you? Why did you go away?*



1. Duck Walk.

2. Beta Beta Banquet.

3. Hey! Cutsinger!



4. Aw, come on, let me read it.

5. Big Dogs!



6. Look out!!! You'll get hit!

7. Interested!



8. What's cooking Doc?



9. Wonderful night.

10. Newly-Weds.

11. Don't get alarmed—just a Phys Ed performance.



12. Happiness goes on.

13. 'Twas the night before Xmas—and Willie peeped.



14. Charles Wells can do it easier than you can.

15. Simply beaming.



16. The food looks inviting.

17. I bet they got an encore.



18. Go ahead and eat.



"Oh, Direful Woe... These  
Greeks are wimmin!!!"

—SMEAD



## W. C. F.

When questioned too persistently as to what W. C. F. stands for, a member of this social organization is likely to answer with a twinkle in her eye, "We crave food."

However, the club was organized in 1927, with social enjoyment and greater friendship among members as its object. On Wednesday the W. C. F.'s are distinguished from other students when they wear a becoming two pieced blue and white dress.

They began the school year with a steak supper which insured success for the months to follow.

### MEMBERS

Naomi McKee

Frances Taylor

Betty Lou Stanfill

Charlene Remley

Ruth Henning

Frances Brashears

Irene Lester

Martha Frances Harris

Carolyn Caskey

Julia Lady

Bettye Poindexter

Lilly Mae Renfroe

*I keep recalling the moon over the tower,*



## E. E. E.

Girls who strive to be "high-principled, broad-minded, wholesome and trustworthy", as their club aim states, make up the E. E. E.'s.

E. E. E. social club was organized in 1925, and in the years since, a variety of feasts and entertainment have been held under the sign of the Mickey Mouse, which is the club emblem.

Members of this club are set apart from the rest of the student body when they wear red and white dresses on Monday.

### MEMBERS

Billie Blaylock

Jaunita Jordan

Barbara Rudolph

Betty Tatum

Louise Johnson

Sue O'Neal

Billie Sue Glover

Mary Jo Newcomb

Mary Ann Wheelis

Katheryn Loewer

Vernelle Seefeldt

*Oh, you were my treasure of gold,*



## Hi-Hats

At 9:30 each Monday night the Hi Hats gather in one of the member's room for their weekly meeting.

These girls are identified by their wearing of black corduroy jumpers with white blouses on Thursday.

They entered their zest into the joint formal which was held by all girls clubs during the Christmas season.

### MEMBERS

Wilma Helen Phillips  
 Mary Frances Sadler  
 Jo Beth Croxton  
 Nancy Winburn

Ann Cully Yates  
 Marie Ann Swaim  
 Genevieve Hanson

Marceline Atkins  
 Frankie Davidson  
 Mary Wesson  
 Ruth Ellen Quinn

*I can't forget these heavenly hours,*



## A. R. C.

The ARC was formerly the Physical Education Club which was organized in 1939 to promote recitational activities not only among club members, but for the student body. The club became a social club in 1943 under the name ARC and we wonder if that means the "animated ravine co-eds"?

They knocked the old year in the head with a gay Christmas Party.

### MEMBERS

Edith Chapman

Neville Swain

Margaret Jones

Billye Sue Smith

Dorothy Jean Guy

Martha Corn

Sue Fore

June Patterson

Jessie Gladden

Edna Mae Pugsley

Mary Helton

Billie Jean Gaylor

Alice Marie Morrison

Alice Beth Pittman

Phylis Barker

Joyce Lee Shryock

*This is a story that's never been told.*



## Kewpie Klub

The Kewpie Klub is one of the oldest social organizations on the campus and had a most romantic beginning. On October 2, 1915, twelve charter members climbed quietly to the tower of the administration building where they held their first meeting. Until social clubs were approved on Ouachita's campus, their meetings were held in secret.

Kewpies will have A-1 socials to remember in the years to come.

Their colors are green and white with the four leaf clover for their emblem.

### MEMBERS

Charlene Quick	Bobbie Jean May	Elene Parrott
Carolyn Richardson	Sara Stephenson	Iris Thomas
Dorothy Thomas	Sally Jane Hayes	Mary Bob Hodges

*My Varsity Girl, remember, this is my senior year*



## Gamma Phi

The Gamma Phi girls made their debut on March 2 of this year. "To live happy, well-rounded lives, and to bridge the river between club and non-club girls on Ouachita's campus are two aims of these girls."

They have no particular dress but have club pins and their colors are orchid and silver.

### MEMBERS

Betty Schuh

Ffances Osborn

Francene Lynch

Betty Ramay

Bette Cockran

Helen Copeland

Carr Lemoine Moore

Jackie Bly

Victoria Brown

Mary Jess French

*Please come back before its over--Varsity Girl, My Dear.*



With all the dis  
that's allowed

Carefree, happy  
and gay. Y  
very!



Glamour.

What caused th

Taking off?

Picture of innoc

Wish we could  
peat the l  
statement.

You interpret th

Already announ

Let me go with

Warning: Don't  
her when s  
down, she's l  
to get up.



Better known  
the "Redd  
territory.

Waiting in line  
Sunday dis  
This is no job



Instructive criti

Poor kid.

Don't you belie

My, but the  
walk is chur  
up.



Huh? Uh Huh.

A snow ball?  
you if you  
watch out.

Wait till you  
this.

Coming or go

But they've g  
secret.







## Girls Student Government

Each fall the girls in Cone-Bottoms and Wallis Hall meet to draw up rules by which they will be governed throughout the year, and elect representatives from their midst to serve on the Student Council; each class in both dorms allowed one representative.

This council meets each Tuesday evening at 9:30 in Mrs. Winburn's office. Its purpose is to promote a congenial spirit among the girls and to enforce the rules of the dormitory.

### OFFICERS

RUTH HENNING . . . . .	<i>President</i>
EDITH CHAPMAN . . . . .	<i>Vice President</i>
EDNA MAE PUGSLEY . . . . .	<i>Secretary</i>
GERTRUDE AUGHEY . . . . .	<i>Representative (Wallis Hall)</i>
MARY NELL JERNIGAN . . . . .	<i>Freshman Representative (Cone Bottoms)</i>
JO LAWRENCE . . . . .	<i>Junior Representative (Cone Bottoms)</i>
KATHERYN LOEWER . . . . .	<i>Treasurer</i>
ALICE MARIE MORRISON . . . . .	<i>Representative (Wallis Hall)</i>
MARY JO NEWCOMB . . . . .	<i>Representative (Wallis Hall)</i>
DORTHA DAVIS (not pictured) . . . . .	<i>Senior (Cone Bottoms)</i>

*A government of the girls--by and for the girls.*



## English Honor Society

Organized in December, 1935, by a group of interested students, Epsilon Omega Sigma, better known as the English Honor Society, has as its purpose the encouragement of creative writing and the stimulation of a keener interest in literature and higher learning.

Programs are given at each regular monthly meeting which tend to help the members in understanding different phases of literature and its related fields.

Membership in this club is restricted to those who have the higher grades in English. Honorary membership is offered to those who manifest sufficient creative ability to warrant it.

### OFFICERS

MILLARD ROSS CHERRY . . . . .	<i>President</i>
MARILYNN THOMAS . . . . .	<i>Vice President</i>
NETABEL JOYCE . . . . .	<i>Secretary</i>
PHYLLIS DAILY . . . . .	<i>Treasurer</i>

### MEMBERS

Dorothy Jean Guy	Mrs. Bob Wells	Miss Holliman
Daniel Grant	Miss Albert Harrington,	not pictured
Mrs. John Parrott	<i>Sponsor, not pictured.</i>	

### HONORARY MEMBERS (not pictured)

Wayne Ward	Martha Hirston	Mr. Edwin McDonald
------------	----------------	--------------------

*Responsibilities gravitate to persons who can shoulder*



## Math Honor Society

In 1937, when Dr. E. G. Harrell felt that the mathematics department had expanded sufficient to warrant it, he organized the Math Honor Society. Requirement for membership is fifteen quality credits in mathematics. Members are admitted at the beginning of each semester. Purpose of the organization is to stimulate interest in math.

Meetings are held once each month in the math lecture room and programs on mathematics and its related fields are presented.

*them, power flows to men who know how.*



## International Relations Club

One of the most outstanding clubs on the Ouachita campus is the International Relations Club, whose purpose is to study current international developments and to establish a congenial feeling among various members of the department.

On certain nights non-members are tempted to be present, especially when they smell "steak perfume."

### OFFICERS

MARILYNN THOMAS . . . . .	<i>President</i>
LUCRETIA HENRY . . . . .	<i>Vice President</i>
INEZ WEBB . . . . .	<i>Secretary</i>
JOHN EDRINGTON . . . . .	<i>Treasurer</i>

### MEMBERS

Millard Ross Cherry	J. W. Holder	Oliva Dover
Dortha Davis	Daniel Grant	Leatrice Milsapps
Virginia Robinson	C. R. Pierce	Mrs. Stanford Pierce
Rosalea Robinson	Edith Chapman	Joyce Shryock
Floyd Taylor	Joe Clements	Charles Rose
Frances Brashears	Dr. R. C. Daily,	Nancy Winburn
Alfred Vansant	Sponsor (not pictured)	Mrs. Welch
Dorothy Jean Guy		Mr. Welch

The great things in the world is not so much where



## Chemistry Club

The Chemistry Club was organized in 1940. Membership is open to anyone who has had at least one year of chemistry, or who plans to major or minor in chemistry. Anyone attending three meetings is classed as an associate member, regardless of other requirements. The club meets twice each month.

Practical programs have been presented to foster interest in chemistry.

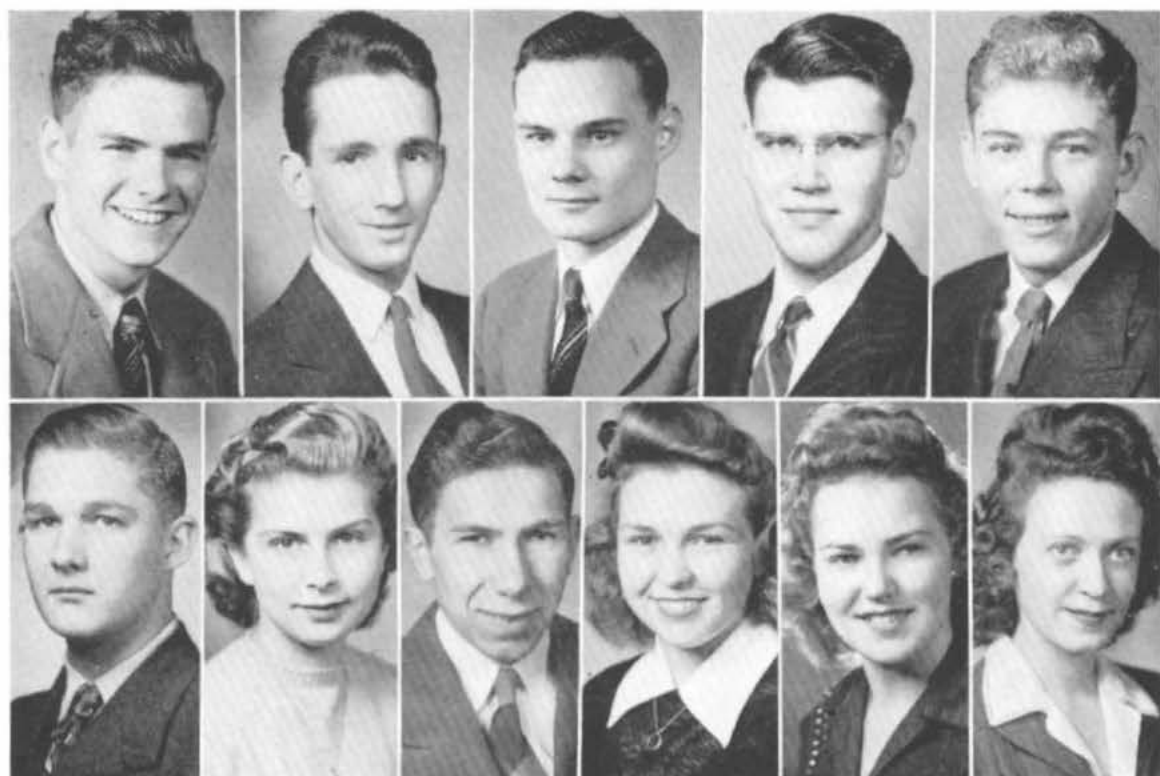
### OFFICERS

JIMMIE A. BEALS	President
BILL WHARTON	Vice President
CARL AMASON	Secretary
BILLIE BLAYLOCK	Program Chairman
EVELYN FOXX	Corresponding Secretary and Treasurer
THOMAS GRAY	Reporter

### MEMBERS

"Doc" Simmons	Dan Norfleet	Sue Fore
Thomas Ashcraft	Hiram Ward	Janice Maxwell
Fred Berry	Fred Caldwell	Dr. Provine
Wyley Joe Elliott	Earl Cutsinger	Sponsor (not pictured)
Joe Ed Harris	Joyce Ponders	

we stand as the direction in which we are moving.



## Lab Assistants

This group of "semi-teachers," although they constitute no formal organization, has a definite place in the life of the college, and as individuals they render real service to the school in their various departments of work.

As laboratory assistants these students guide those in laboratories under them and assist as much as is necessary. They become real friends to those whom they help; and professors could get along without them as well as boats could get along without bottoms.

### MEMBERS

Fred Berry

Doc Simmons

Thomas Gray

J. A. Beals

Fred Caldwell

Hiram Ward

Billie Blaylock

Glenn Baker

Eloise Scruggs

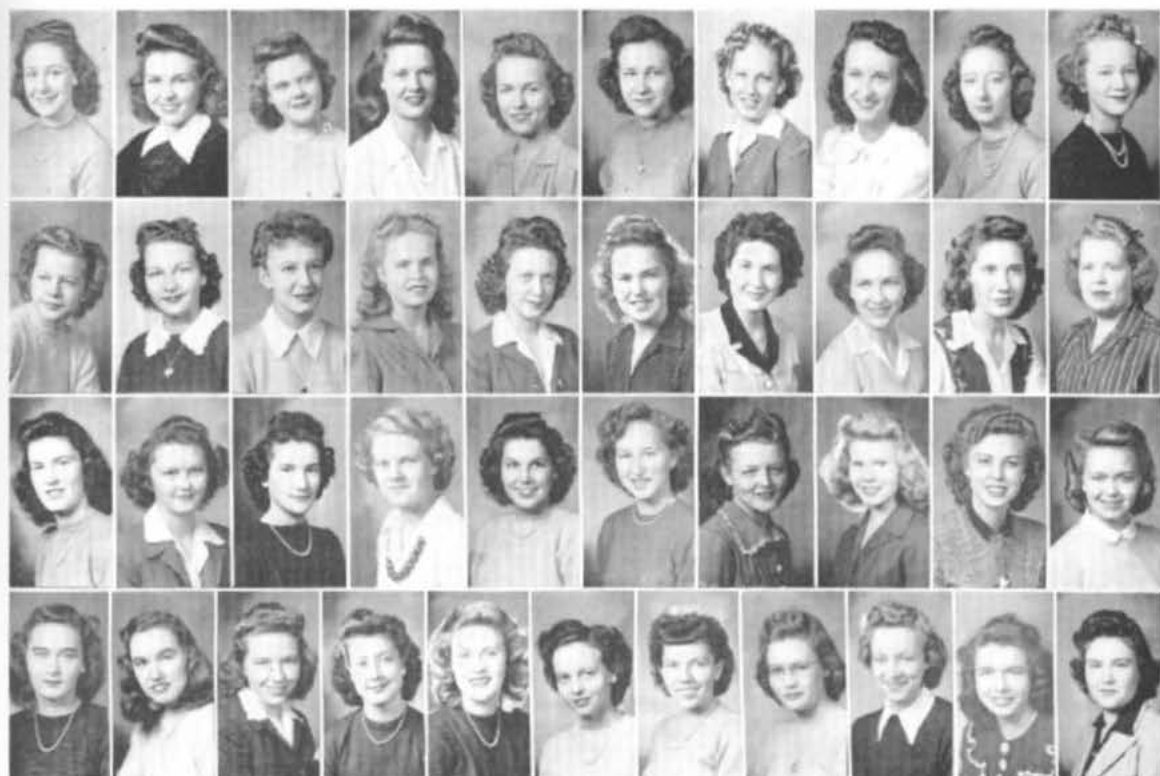
Opal Crutchfield

Beth Crutchfield

Doc Provine

Sponsor (not pictured)

*Easy job! To those who know the least about it.*



## Home Economics Club

A leader of home economics in the state of Arkansas, Ouachita's home economics department maintains what is perhaps the most efficient, mechanically perfect, and all-around successful club on the campus. They are often called the "future home-makers."

Members participate in such humanitarian movements as making garments for the Red Cross, attending state meetings of the association, and visiting successful homes in Arkadelphia for educational purposes. The club was organized in 1933 by Mrs. Patricia Gunn.

The social functions are among the biggest events of the year.

### OFFICERS

NAOMI MCKEE . . . . .	<i>President</i>
ELLOUISE SCRUGGS . . . . .	<i>Vice President</i>
BETTY TATUM . . . . .	<i>Secretary</i>
HELEN CRAWFORD . . . . .	<i>Treasurer</i>
MARY K. FOX MARTIN . . . . .	<i>Reporter</i>

### MEMBERS

Maxine Baker  
 Olive Blackwood  
 Susan Bow  
 Ellen Bess Caskey  
 Rosemary Childress  
 Martha Corn  
 Doris Cornell  
 Doris Cornish  
 Betty Crawford  
 Beth Crutchfield  
 Opal Crutchfield  
 Sue Fore  
 Anne Fox

Billie Sue Glover  
 Joyce Gill  
 Genida Herndon  
 Margaret Jones  
 Mary Julia Lady  
 Mertie Marie Lloyd  
 Bobbie Jean May  
 Martha Loewer  
 Billie Sue Murray  
 Mary Jo Newcomb  
 Elene Parrott  
 Alice Beth Pittman  
 Charlene Remley  
 Vernelle Seefeldt

Frances Spotts  
 Betty Lou Stanfill  
 Sara Stephenson  
 Dorothy Thomas  
 Arlene Tellison  
 Rosalene Webster  
 Mary Ann Wheelis  
 Erma Cathern Wood  
 Frances Yeager  
 Miss Dura Plant  
 (not pictured)  
 Miss Christine Doyle  
 (not pictured)

*Girls of today -- homemakers of tomorrow.*



Well, women have taken over it seems.

The "Stacks".

White Christmas.

Just a trifle, eh?

Wasteful, hum.

What ? ? ? ? ?

Cow rider, or some pin'.

Thank you, girls.

Can't get away from them.

Don't slip!

Wow ! ! ! !

Kin I have a bit?

Tough as all that?

The three little sisters?





From or to?



May I have your hand?

Dr. Yates is really there.



Forward, to the rear, about face. Well, make up your mind!

Hi, Neil.



Ouch!

Hangout!

Preparation.

Teacher's Walk.



Trees, grass, and clover.

Hold it!

Three in one.

Oh, My!



For Sale!

Sunday Down South.

Some is interested and some is not.

Hic!



H<sub>2</sub>SO<sub>4</sub>? Oh, you'll never solve that one.

Prance, my lady!





## Dramatic Club

When students appear wearing a skull and crossbones prominently on their forehead, carrying a scroll, the student body knows that Ouachita Players are off to another year of crowded activity.

A preliminary examination is given each person who applies for membership and only the most talented are allowed to join the group which seeks to promote and maintain high standards in the dramatic art. Mrs. Rudolph, sponsor.

### OFFICERS

LEHMAN WEBB*	<i>President</i>
DANIEL GRANT*	<i>First Vice President</i>
NETABEL HARDY JOYCE*	<i>Second Vice-President</i>
MARILYNN THOMAS*	<i>Secretary</i>
IRWIN MOSHEIR*	<i>Treasurer</i>
CAROLYN SIMMONS*	<i>Mistress of Wardrobe</i>
PHYLLIS DAILY*	<i>Reporter</i>

### MEMBERS

Gertrude Aughey	Kathleen Gardner	Lois Koch	Jack Rowe
Glenn Baker	Ben Gaston	Weiden Marcum	Barbara Rudolph
Maymie Beaty	Billie Sue Glover	Bobbie Jean May	Carolyn Scott
Olive Blackwood	Bernice Haley*	Clyde McCalman	i. N. Shaddox
Billie Blaylock	Leland Hall	Rex Merton	Betty Lou Stanfill
Frances Brashears	Martha Frances Harris	Sue O'Neal	Sara Stephenson
Edith Chapman	DeWayne Haynes	Sam Phillips	Neville Swain
Betty Cockran	Marilyn Henning	Wilma Helen Phillips*	Lucille Swain
Dale Cowling	Ruth Henning	Elise Pitts	Betty Tatum
Nettie Lou Crowder	J. M. Holder	Charlene Quick	Autry Thomas
Earl Cusinger	Ruth Holt	George Purcell	Charles Vermillion
Sue Daily (not pictured)	Louise Johnson	Charlene Remley	Alma Mae Ward
Catherine Dotson	Juanita Jordan*	Carolyn Richardson	Bob Wells
Bill Flynt	Martha Nell Jowers	Dallas Roscoe	Calley Yates
Sue Fore	Billie Keltner	Charles Rose	Tommy Young
Roberta Fowler			

Stars: Members of Alpha Psi Omega Nat'l. Dramatic Fraternity

Oh, to see ourselves as others see us!



## Phi Beta Chi

The Phi Beta Chi, a home economics honorary society, was organized in January, 1944 under the supervision of Miss Dura Plant, head of the Home Economics Department.

The Charter members of the club are: Susan Bow, Martha Corn, Helen Crawford, Beth Crutchfield, Opal Crutchfield, Mary Katheryne Fox Martin, Naomi McKee, Charlene Quick, Eloise Scruggs, and Emma Catherine Wood.

Honorary Members are: Miss Dura Plant, Miss Christina Doyle, and Miss Margery McMahan.

### MEMBERS

Doyle, Christina  
 Scruggs, Ellouise  
 Chapman, Edith  
 Quick, Charlene

Wood, Emma Cathern  
 Plant, Dura  
 Corn, Martha  
 Bow, Susan

Crawford, Helen  
 Martin, Mary Katheryn  
 Crutchfield, Opal  
 McKee, Naomi

### PLEDGES

Lawrence, Norma Jo  
 May, Bobbie Jean

Osborn, Frances  
 Remley, Charlene

Stephenson, Sara  
 Tollison, Arline

*Good luck, girls!*



## Piano Class

One of the most delightful organizations on the campus, and one which is open to any student who wishes to join it, is the Piano Class, which was organized by Professor Mitchell in 1931. This group meets every Wednesday evening at 6:30, at which time a program is given by the various piano students. This gives them a valuable chance to perform in public and provides a very interesting and cultural program.

### OFFICERS

VIRGINIA QUEEN	President
BONNELL STEWART	Vice-President
IRENE LESTER	Secretary and Treasurer
FRANCES SPOTTS	Reporter

### MEMBERS

Marceline Atkins  
 Susan Bow  
 Frances Brashears  
 Alta Brogdon Shaddox  
 Victoria Brown  
 Mary Alice Burns  
 Betty Lee Campbell  
 Charlene Campbell  
 Betty Cochran  
 Nettie Lou Crowder  
 Norma Lou Davis  
 Kathleen Gardner  
 Jesse Gladden  
 Mary Bob Hodges

Una Mae Holt  
 Mary Lee Howlett  
 Mary Nell Jernigen  
 Mabel Johnson  
 Peggy Kinard  
 Lois Koch  
 Kathryn Loewer  
 Cherry Matthews  
 Martha Loewer  
 Elene Parrott  
 Betty Ramey  
 Lily Mae Renfroe  
 Freda Robinson  
 Dolly Ryan (not pictured)

Marinelle Stephens  
 Vernelle Seefeldt  
 Lois Tankersly  
 Frances Taylor  
 Ann Cully Yates  
 Susan Thompson  
 Carolyn Rhodes  
 Wanda Irwin  
 Frances Shoffner  
 Elizabeth Ellis  
 Helen Marie Garner  
 Louise Norris  
 Betty Schmitz  
 Charleta Beindorf

Saying it with music -- what is sweeter?



## Little Rock Club

This is a club composed of students who live in Greater Little Rock. It is a social club organized to help Little Rockians to get better acquainted. There are about 40 members. Meetings are held every other Thursday night.

Mr. Durrett gave the club a chili luncheon to celebrate their organization. During the Spring Holidays a Steak Fry took place at Boyle Park in Little Rock.

### OFFICERS

C. H. SEATON	President
CHARLES CORNELL	First Vice President
MARTHA CORN	Second Vice President
BETTY TATUM	Secretary
ORVILLE ROBERTS	Treasurer
BILLIE BLAYLOCK	Reporter
REBECCA COCHRUM	Historian, (not pictured)

### MEMBERS

Joyce Ponder	Anne Hennigan	Mary Wesson	E. O. Martindale
Jimmie Beals	Ruth Holt	Henry Wood	Alfred Vansant
Eleanor Biggs	Annie Hoover	Not Pictured:	Sara Wells
Carolyn Blendon	James W. Johnson	Dolly Ryan	Claud Stripling
Lila Lee Blount	Jan Johnson	Frances Mosely	Joyce Shryock
Bill Burnett	Jimmy Lewis	Otto Sutton	Billy Fred Deaton
Rosemary Childress	Cherry Matthews	Raymond Strickling	Rebecca Cochrum
Doris Cornell	Pat Mehaffy	Pat Mehaffy	Troy Bledsoe
Leland Hall	Charlene Quick	Charles Luck	Rex Morton
			Evelyn Foxx

*A happy fellowship of the capital's "kids."*



## B. S. U.

To link the Baptist student with the local Baptist church is the primary aim of this group. Religious leadership on the campus is largely left in the hands of these students elected annually by the student body.

In addition to their many other functions this year the members of the council have bettered campus life by promoting parties and by having made possible the presence of the well known journalist Charles A. Wells on our campus for a week. Foreign Relations Week produced Miss Mildred Cox, Mr. John Abernathy, Mr. Sakque, Miss Margaret Hutchinson, and our own Miss Lila Wilson.

### OFFICERS

DANIEL GRANT	President
MILDRED MITCHELL	First Vice President
ALMA MAE WARD	Second Vice President
DALE COWLING	Third Vice President
HELEN HUTCHINSON	Secretary
LUCRETIA HENRY	Treasurer
JAMES LUCK	Reporter
JOHN ED STEELY	Music Director
EDNA MAE PUGSLEY	Ridgecrest Chairman
ROSALEA WEBSTER	Sunday School Representative
NORMA LEE JOHNSON	Training Union Representative
BILL FLYNT, ANDY HESKETT	Life Service Band Representative
DOROTHY JEAN GUY, NETABEL HARDY JOYCE	Y. W. A. Representative
LEHMAN WEBB, IRWIN MOSIER	Ministerial Association Representative
CHARLES HAMPTON	Volunteer Band Representative
FRANCES BARBOUR (not pictured)	Student Secretary
DR. O. W. YATES (not pictured)	Faculty Advisor
DR. R. E. NAYLOR (not pictured)	Pastor Advisor

Faithful leaders who are striving hard to



## Y. W. A.

The Young Women's Association is the only organization on the campus which includes in its membership practically every girl. Purpose of the organization is to lead girls to become more missionary-minded, and to promote a Christian atmosphere in Cone-Bottoms and Wallis Hall.

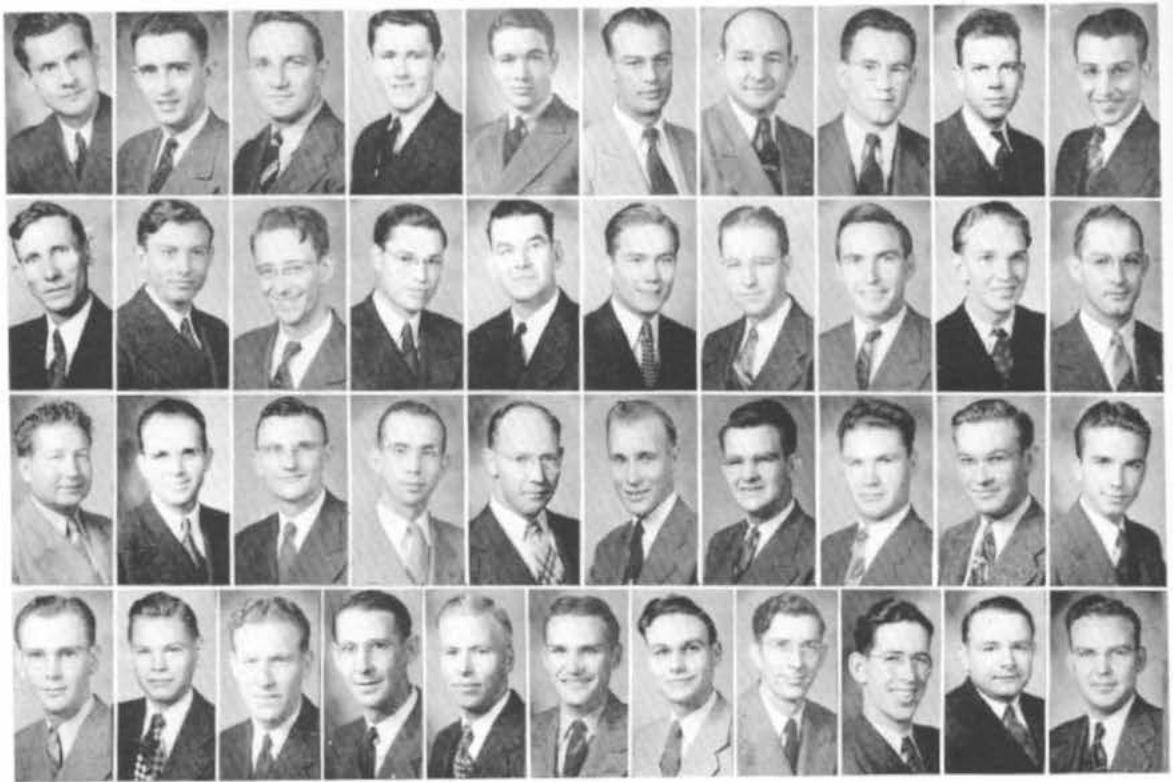
Mrs. E. M. Blake has been sponsor of the college YWA for many years and has led the organization in countless worthwhile missionary endeavors.

The beautiful candlelight officers' installation ceremony at the beginning of the school year is one of the most colorful of the sort on the campus.

### OFFICERS

DOROTHY JEAN GUY, NETABEL HARDY JOYCE	President
KATHERINE SEXTON	Vice President
EDNA MAE PUGSLEY	Program Chairman
VICTORIA BROWN	Secretary
JACKIE BLY	Treasurer
BERNICE HALEY	Mission-Study Chairman
REBECCA COCKRUM	Personal Service Chairman
HELEN COPELAND	Librarian
KATHRYN LOEWER	Pianist
KATHLEEN GARDNER	Chorister
DOROTHY THOMAS	Social Chairman
FRANCENE LYNCH	Publicity Chairman
EVELYN FOXF, ROSALEA ROBINSON, SUE FORE, FAYE GOODWIN, GERTRUDE AUGHEY, ELEANOR BIGGS, PEGGY KINARD, ELISE PITTS	Circle Chairmen
MISS FRANCES BARBOUR (not pictured)	Student Secretary
Mrs. E. M. BLAKE (not pictured)	Counselor

promote religious life at Ouachita.



## Ministerial Association

### OFFICERS

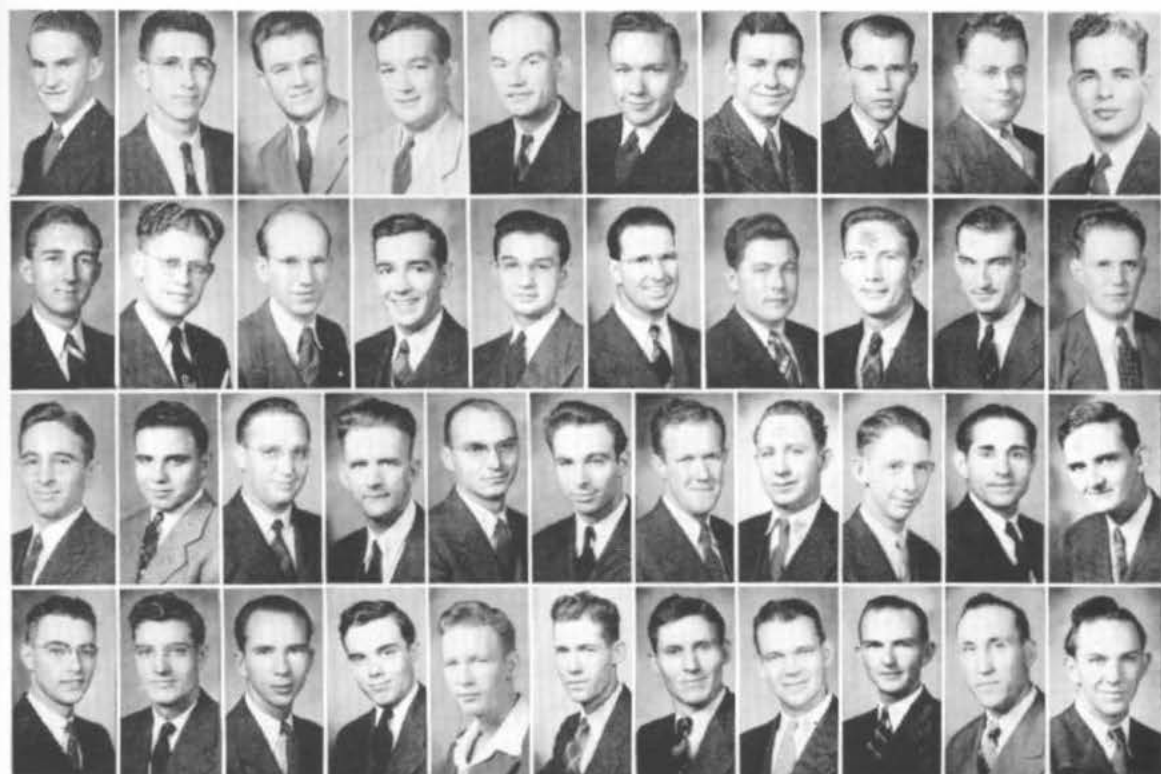
LEHMAN WEBB . . . . .	<i>President, First Quarter</i>
IRWIN MOSHIER . . . . .	<i>President, Second Quarter</i>
ALFRED VANSANT . . . . .	<i>President, Third Quarter</i>
BILL MONTGOMERY . . . . .	<i>President, Fourth Quarter</i>
GARLAND ALLEN . . . . .	<i>Secretary</i>

### MEMBERS

Russell Arner	Charles Cornell	Leland Hall
Jack Auten	Dale Cowling	Charles Hampton
Gordon Baker	Billy Fred Deaton	Jimmy Harris
H. R. Boyd	Shirley DeBell	Heskett Andrew
Homer Bradley	B. L. Dorman	J. M. Holder
Curtis Bull	Boyd Eldridge	Claud Hughes
Claud Bumpus	T. L. Epton	O. D. James
William Burnett	Lawrence Ferrell	James B. Johnson
Mildred Ross Cherry	William Flynt	James W. Johnson
Stanley Cooper	Don Grafton	Thomas Lindley
Don Corley	Horace Grigson	Charles Luck
	J. W. Hall	

*Big rewards come to those who will*





## Ministerial Association

One of Ouachita's oldest organizations is the Ministerial Association which proposes to establish a spirit of fellowship and increased spirituality among the ministerial students on her campus.

Requirement for membership to the organization is to be either ordained or licensed ministers.

During the past year various members have assisted in the Associational S. S. and B. T. U. work, and filled numerous pulpits throughout the state.

### MEMBERS

James Luck  
 Al Major  
 Weldon Marcum  
 Charles Martin  
 Everett Martindale  
 Quincy Mathis  
 John Midkiff  
 Dillard Miller  
 Pat Mehaffey  
 Clyde McCalman  
 Freeman McMenis  
 John Parrott  
 J. O. Perkinson  
 Edward Person

Sam Phillips  
 Stanford Pierce  
 S. D. Porter  
 O. G. Priddy  
 Orville Roberts  
 Charlie Robertson  
 O. C. Robinson  
 Dallas Roscoe  
 Gerald Rowe  
 A. J. Scott  
 C. H. Seaton  
 Clark Secoy  
 T. N. Shaddox  
 Elmer Shelton

Nealie Shinn  
 Herbert Sparler  
 John Ed Steely  
 Claude Stripling  
 Floyd Taylor  
 Autry Thomas  
 Charles Trammell  
 Charles Vermillion  
 A. W. Wagner  
 Walter H. Watts  
 Bob Wells  
 Glenn Womach  
 Harold White  
 Don Williams

*travel the second. undemanded mile.*



## Ministerial Auxiliary

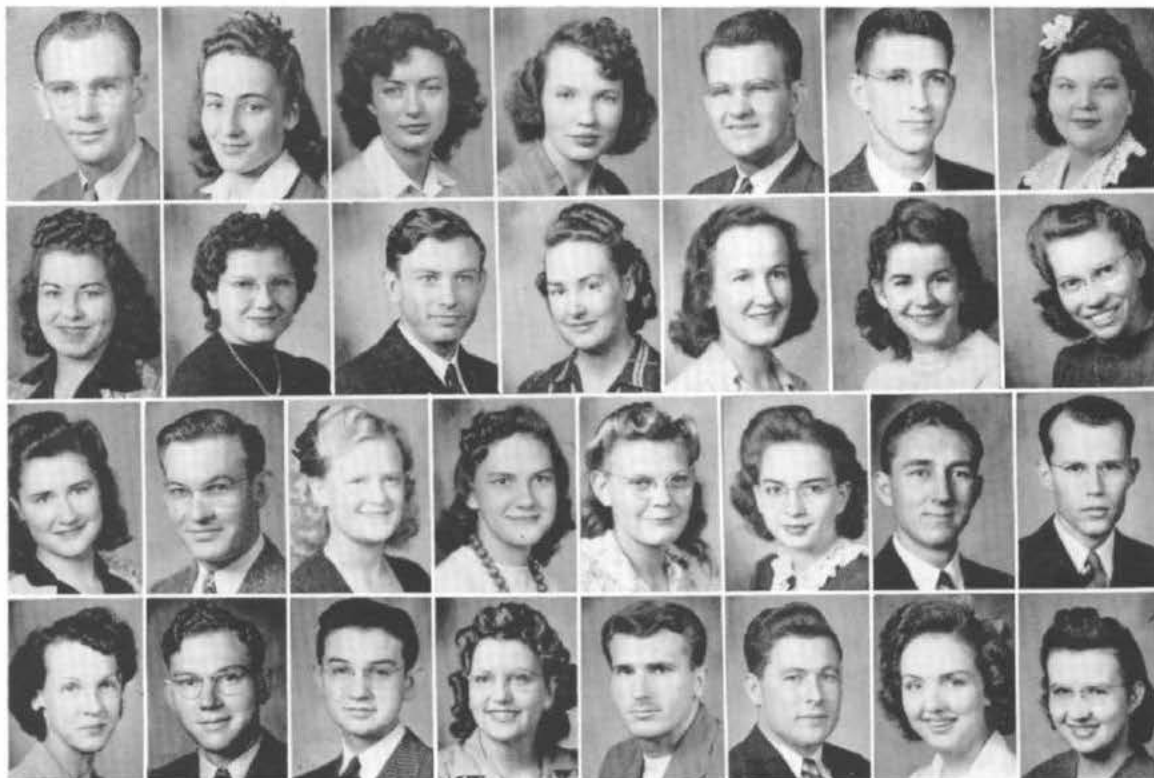
Meeting each Thursday evening simultaneously with the meeting of their husbands in the Ministerial Association, these women endeavor to carry on their work in such a way as to supplement and contribute to the work of their husbands.

All of these members are married (a requirement) and it is the only such club on the campus.

### MEMBERS

Mrs. Jack Auten	Mrs. Charles Hampton	Mrs. J. O. Perkinson
Mrs. C. M. Cooper	Mrs. Claude Hughes	Mrs. A. J. Scott
Mrs. B. E. Eldridge	Mrs. Bill Kersh	Mrs. Claud Stripling
Mrs. L. Ferriell	Mrs. Weldon Marcum	Mrs. A. W. Wagnon
Mrs. Horace Grigson, Jr.	Mrs. Quincy Mathis	Mrs. Harold White
	Mrs. Dillard Miller	

*Faithful helpers, always ready to serve.*



## Volunteer Band

Although organized only last year, the Volunteer Band has carried out a very successful program. This band consists of mission volunteers and tends to educate the members about the various fields of mission work. Many countries are represented by students who plan to be missionaries. Honorary members who are interested in mission work are admitted. (These are indicated by stars.)

The Volunteer Band has a social life also with the intention that all members will get better acquainted. The socials that have been given will live long in the hearts of the members.

### OFFICERS

CHARLES HAMPTON	President
CHARLETA BEINDORF	Vice President
MILDRED MITCHILL	Secretary
MARILYN HENNING	Correspondence Secretary
DON GRAFTON	Treasurer
AL MAJOR*	Chorister
LILA LEE BLOUNT*	Pianist
FRANCES BEINDORF	Social Chairman

### MEMBERS

Lois Marie Boyd	J. W. Hall	Loyce Nelson
Claude Bumpus	Annie Hoover	Sam Phillips
Irene Branum*	Helen Harden	Loreen Phillips
Becky Cockrum	Margarete Horne	C. R. Pierce
Bette Cochran*	Wanda Irwin	S. D. Porter*
Evelyn Fox*	Freeman McMenis	Carolyn Rhodes
Mary Anna Gray	Dillard Miller	Doris Reamey
	Mrs. Dillard Miller	

*And these so willing to aid.*



## Life Service Band

### OFFICERS

#### FIRST SEMESTER

BILL FLYNT, ANDY HESKETT	President
HERBERT SPARLER	First Vice President
OLIVE BLACKWOOD	Second Vice President
FREDA COX	Secretary

#### SECOND SEMESTER

LELAND HALL	President
BETTY JO SCHUH	First Vice President
ENA HILE	Secretary
ORVILLE ROBERTS	Reporter
CHARLES CORNELL	Treasurer

### MEMBERS

Rebecca Cockrum	Catherine Dotson	Garland Allen	Victoria Brown
Charles Cornell	Olita Dover	Thomas Ashcraft	Homer Bradley
Dale Cowling	Georgia Ruth Dudley	Jack Auten	Claud Bumpus
Betty Crawford	Eveyn Foxx	Glen Baker	Bill Burnett
Helen Crawford	Ruby Finkbenier	Maxine Baker	Bette Lee Campbell
Phyllis Dally	Betty Jo Franks	Maxwell Baker	Carolyn Caskey
Sue Daily	Kathleen Franks	Charleta Beindorf	Ola Jane Casey
Norma Davis	Kathleen Gardner	Frances Beindorf	Millard Ross Cherry
Billy Fred Deaton	Helen Marie Garner	Lila Lee Bleunt	Rosemary Childress
Shirley DeBell	Joyce Gill	Jackie Bly	Bette Cochran
	Don Grafton	Lois Marie Boyd	

*All I have seen teaches me to trust*



## Life Service Band

"To inform, inspire, and train" its members in missionary activities and personal Christian living are the aims of the Life Service Band, the oldest religious organization for lay students on the campus.

This year regular services were held at three mission posts, and at the county jail.

Sponsors: Dr. Yates, Dr. Wallace.

### MEMBERS

Mary Anna Gray	Mary Helton	Norma Lea Johnston	Al Major
Bernice Haley	J. M. Holder	Mabel Johnston	Quincy Mathis
J. W. Hall	Mary Bob Hodges	Winifred Johnston	E. O. Martindale
Charles Hampton	Charles Holland	Martha Nell Jowers	Cherry Mathews
Helen Harden	Ruth Holt	Juanita Jordan	Janice Maxwell
Marie Hardwick	Annie Hoover	Mrs. Netabel Joyce	Nina McGhee
Edgar Harvey	Margarete Horne	Betty Jo Lacy	Esther McLain
Montine Harvill	Mary Lee Howlett	Mary Julia Lady	Ruth McLain
Joe Ed Harris	Sue Hubbard	Willadeen Lawrence	Freeman McMenis
De Wayne Haynes	Wanda Irwin	Mertie Marie Lloyd	Pat Mehaffy
Marilyn Henning	Mary Nell Jernigan	Faye Lonon	Mrs. Pat Mehaffy
Betty Jo Hicks	James W. Johnson	Francene Lynch	J. T. Midkiff
	James B. Johnston	Dorothy Lyon	

*the creator for all that I have*



## Life Service Band

### MEMBERS

Dillard Miller  
 Leatrice Millsapps  
 Mildred Mitchell  
 Carr Lemoine Moore  
 Irwin Moshier  
 Loyce Nelson  
 Louise Norris  
 Nancy Lee Orr  
 John Parrott  
 Edward Persons  
 Lorene Phillips  
 Stanford Pierce  
 Alice Beth Pittman  
 Joyce Ponder  
 S. D. Porter  
 Willadean Powell  
 George Priddy  
 Doris Reamy

Dolly Ryan  
 Charles Robertson  
 Dallas Roscoe  
 Charles Rose  
 Lynelle Sandifer  
 Betty Schmitz  
 Anise Schrimshire  
 Ellouise Scruggs  
 C. H. Seaton  
 Clark Secoy  
 T. N. Shaddox  
 Alta Brogdon Shaddox  
 Imogene Sheppard  
 Nealie Shinn  
 Frances Shoffner  
 Joyce Shyrock  
 Carolyn Simmons

Mary Frances Simmons  
 Billye Sue Smith  
 John Ed Steely  
 Mary Nell Stephens  
 Claude Stripling  
 Lois Tankersly  
 Susanne Thompson  
 Autrey Thomas  
 Edith Walker  
 Alma Mae Ward  
 Lehman Webb  
 Rosalea Webster  
 Mary Wesson  
 Bob Wells  
 Sara Biggs Wells  
 Calvin Wharton  
 Emma Jean Whisenhunt  
 Don Williams

*not seen, and to render my best.*

# RIPPLES

## RIPPLES STAFF

ALMA MAE WARD . . . *Associate Editor*

MISS ALBERTA HARRINGTON *Faculty Advisor*  
(not pictured)

NEVILLE SWAIM . . . *Short Story Editor*

LUCRETIA HENRY . . . *Essay Editor*

REBECCA COCKRUM . . . *Poetry Editor*

CAROLYN SIMMONS . . . *Dramatic Editor*

BETTY TATUM, BONNELL STEWART,  
WELDON MARKHAM . . . *Art Editors*

JAMES LUCK, ELISE PITTS,  
JOYCE PONDER . . . *Staff Secretaries*

J. W. HALL . . . *Layout Manager*

JOHN ED STEELY . *Circulation Manager*

EDITH CHAPMAN . . . *Proof Reader*



MARILYNN THOMAS  
*Editor*

MILLARD ROSE CHERRY  
*Business Manager*



May the writing of good literature never die!



## Ouachita College

### MEMBERS

#### *Bottom Row*

Ellouise Scruggs  
 Martha Nell Jowers  
 Kathleen Gardner  
 Nancy Orr  
 Betty Lee Campbell  
 Rosemary Childress  
 Frances Spotts  
 Charleta Beindorf  
 Frances Beindorf  
 Lois Koch  
 Betty Jo Hicks

#### *Middle Row*

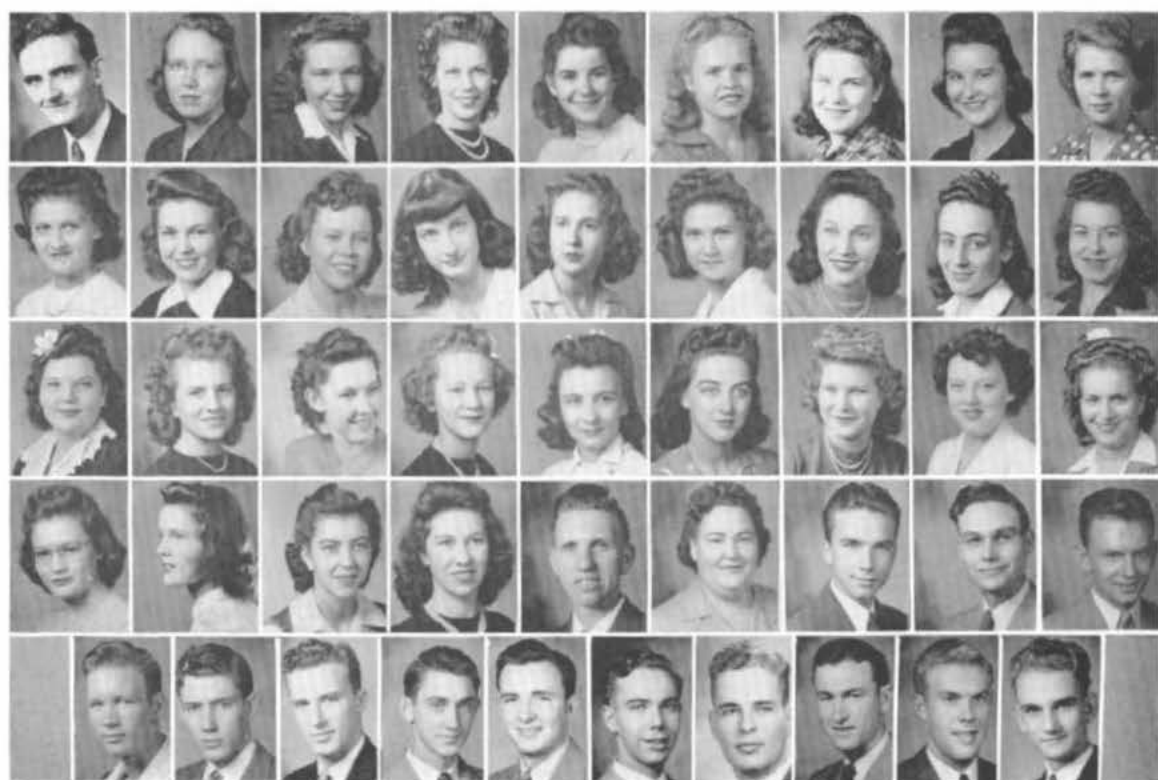
Betty Crawford  
 Faye Goodwin  
 Rosalea Robinson  
 Peggy Kinard  
 Frances Shoffner  
 Shirley Staton Ross  
 Lila Lee Blount  
 Rosalea Webster  
 Betty Cochran  
 Betty Hardy  
 Freda Cox  
 Helen Copeland  
 Victoria Brown  
 Charlene Campbell  
 Bernice Haley

#### *Top Row*

Joe David Adams  
 Leland Hall  
 Charles Rose  
 Dewey Overton  
 Clyde McCalman  
 George Burns  
 Donald Grafton  
 Charles Vermillion  
 Billie Keltner  
 James B. Johnson

*A troubadour of happy singers who give to*





## Symphonic Choir

The purpose of the Ouachita Symphonic Choir is not to entertain but to glorify the living Christ and to draw people closer to Him. Many are the hearts that have been cheered by these songbirds, especially now that the world is in such a turmoil.

Many week-end trips were made the first semester, but due to the lack of tires and gas not many were made the second semester. However, the choir took advantage of the radio broadcast and perhaps reached more people than ever before.

The choir is very grateful to Miss Thelma Batson, "choir mother," or faculty advisor, for the inspiration and encouragement that she has given them. The year was successfully ended with a formal banquet at the Caddo Hotel in May.

JOHN ED STEELY . . . . . Director  
 VIRGINIA QUEEN . . . . . Pianist

### MEMBERS

Frances Spotts	Martha Nell Jowers	Shirley Staton Ross	Billie Keltner
Bette Lee Campbell	Nancy Lee Orr	Frances Shoffner	Charles Vermillion
Betty Cochran	Mary Wesson	Alma Mae Ward	George Bourna
Betty Crawford	Charleta Beindorf	Rosalea Webster	Harold Hamilton
Betty Jo Hicks	Frances Beindorf	Helen Copeland	DeWayne Haynes
Peggy Kinard	Lila Lee Blount	Freda Jean Cox	Wallace Kelley
Lois Koch	Victoria Brown	Bernice Haley	Dewey Overton
Rosalea Robinson	Charlene Campbell	Joe David Adams	Clyde McCaiman
Elliouse Scruggs	Rosemary Childress	Elizabeth Ellis	Charles Rose
Kathleen Gardner	Faye Goodwin	Leland Hall	Jack Rose
Betty Hardy	Carr Lemoine Moore	James B. Johnson	Arthur Steely

many the songs everyone loves to hear.

# S I G N A L



T. N. SHADDOX  
Editor

JIMMY BEALS  
Business Manager

## SIGNAL STAFF

- FRANCES TAYLOR . . . . . Assistant Editor  
 J. W. HALL . . . . . Art Editor  
 MARILYNN THOMAS, CHERRY MATTHEWS,  
 CATHERINE DOTSON, DORIS CORNISH  
 . . . . . Columnists  
 CAROLYN SIMMONS . . . . . Society Editor  
 ALTA SHADDOX . . . . . Secretary and Typist  
 NAOMI MCKEE, JO BETH CROXTON, DONALD  
 NOBLES, MARTHA CORN, HELEN CRAWFORD,  
 THOMAS LINDLEY, MARTHA NELL JOWERS,  
 OPAL CRUTCHFIELD, ANNE CULLEY YATES,  
 NANCY LEE ORR, LOUISE JOHNSON, HELEN  
 COPELAND, LUCILLE SWAIM . . . . . Reporters  
 GEORGE BOURNS . . . . . Assistant Bus. Mgr.  
 WYLEY JOE ELLIOTT . . . . . Circulation Manager  
 ERWIN L. McDONALD . . . . . Faculty Advisor



"The time has come," the Walrus says,

# OUACHITONIAN

## OUACHITONIAN STAFF

MARY KATHERYN MARTIN—Senior Class Editor and Assistant Editor.

SAMMY HOLMAN—Assistant Business Manager, Sports Editor, Caption writer, or what have you.

DOROTHY JEAN BURGESS—Staff Secretary, general flunky . . . or what next?

LILA LEE BLOUNT—Historian, or surely this can't kill you . . .

SUE O'NEAL—Secretary, Words of Wisdom Writer, or we'll laugh this off . . .

TANNA MURRY—Secretary, Confucius' Successor, or a hint to the wise is sufficient . . .

MARY WESSON—Secretary—"Tweet," our comic strip—helps our ego!

SAM PHILLIPS—Picture Editor, Calendar writer and what a combination he can make of work and pleasure . . .

WILEY JOE ELLIOTT—Staff Photographer, Circulation Manager, and gee, what a sense of beauty!

J. W. HALL—Staff Artist, can he draw!



FRANCENE LYNCH  
Editor

CLYDE MCCALMAN  
Business Manager

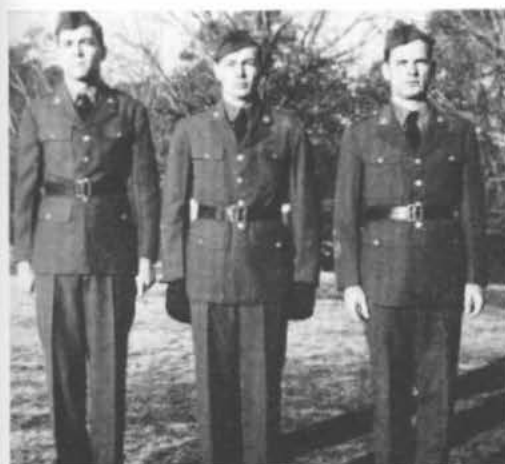


and the work is just begun!

"Forward, March"



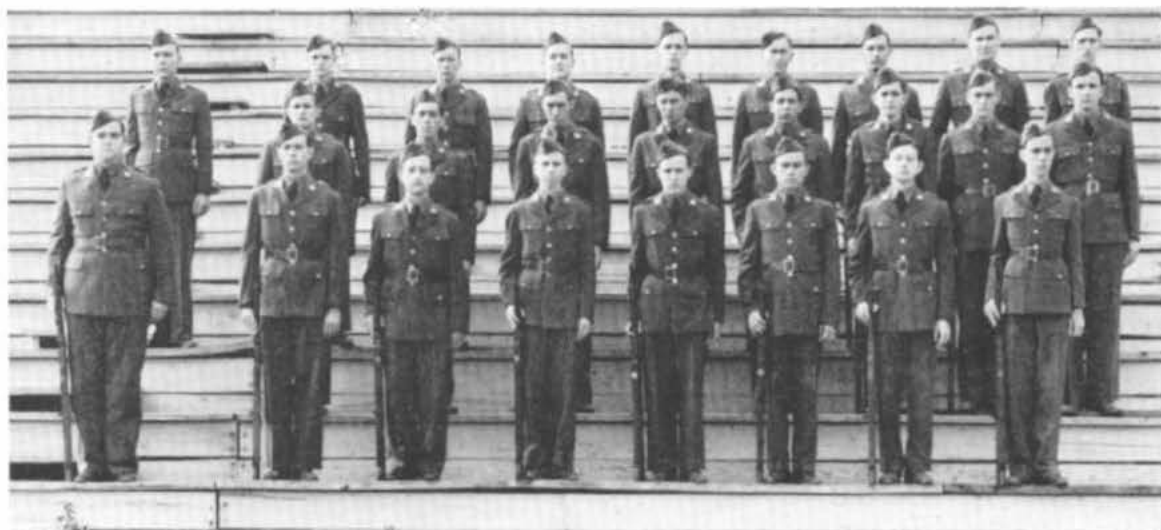
## R. O. T. C. BAND



Alvis Carpenter  
 Bill Kersh  
 Clyde McCalman



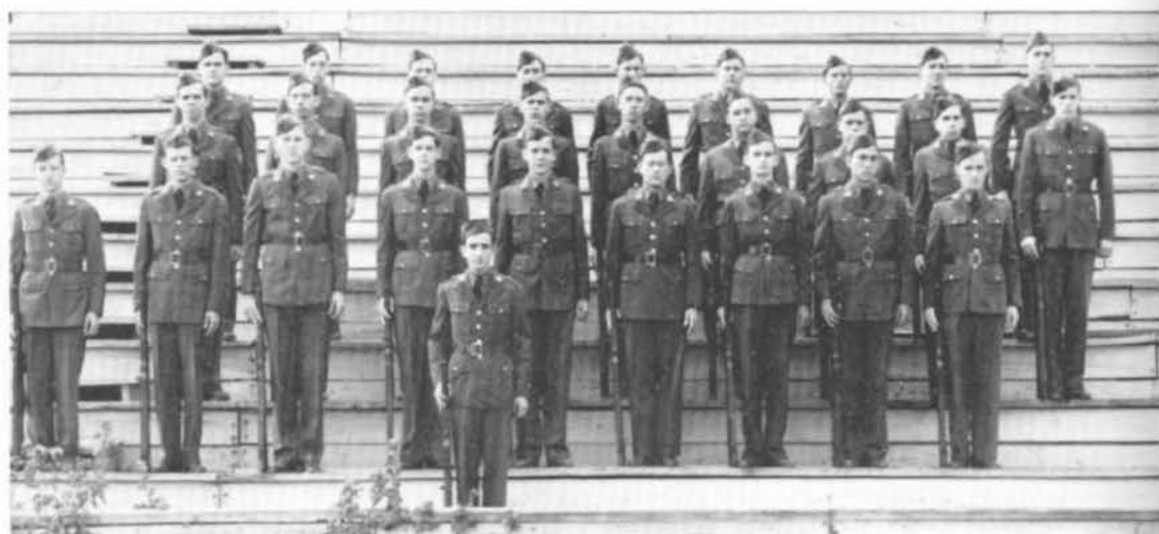
BOBBIE JEAN MAY . . . . . *Battalion Sponsor*  
 DOROTHY RAINWATER . . . . . *Band Sponsor*  
 MARY BOB HODGES . . . . . *Company B Sponsor*  
 PEGGY KINARD . . . . . *Company A Sponsor*



## FIRST PLATOON



NON-COMS



SECOND PLATOON



NON-COMS

"Off we go into the  
wild blue yonder..."

# Cadets Have Arrived On Ouachita Campus

That's right! 250 of them, what fun we will have!

Officers? You bet!

CAPT. SAMUEL J. CONE, . . . . . *Wilmot, Ark.*

CAPT. HARRY A. KAUNFF . . . . . *Mahaska, Kan.*

FIRST LT. EDWARD G. FLAIG . . . . . *Cincinnati, Ohio*

FIRST LT. PERCY H. KEY . . . . . *Miami, Fla.*

SECOND LT. CLINTON C. WHITE . . . . . *Eutaw, Okla.*

These men train the men of the 67th College Training Detachment (Aircrew) here at Ouachita. The students are awakened in the morning by marching feet and are entertained all day by songs from the hearts of the airmen. What songs! They are sharing our faculty with us and we really don't mind because this is war, and in more than one way you can bet!

It has come to light that our cadets leave us in June, and what a pity because they have been a constant source of pleasure to us and have taught us to realize that through all the hard knocks that life drops in our path, there can be steadfast courage that leads all on to happiness!





At ye olde dining hall.

Boy, won't Mom be glad to get this one?

A shave and a hair cut. . . charge to Uncle Sam.

Just two happy soldiers.

Cold day.

Step lively men!

Walking tours.

One advantage. . . .  
Airplanes don't get stuck.

Good band formation.

The sun is really bright.

We can almost hear what the director is saying.

Daisy, Daisy - - -

Doing their part.

Don't get scared!  
BE CALM.

Say bud, let's see your coupons.



# CROSSING THE BAR

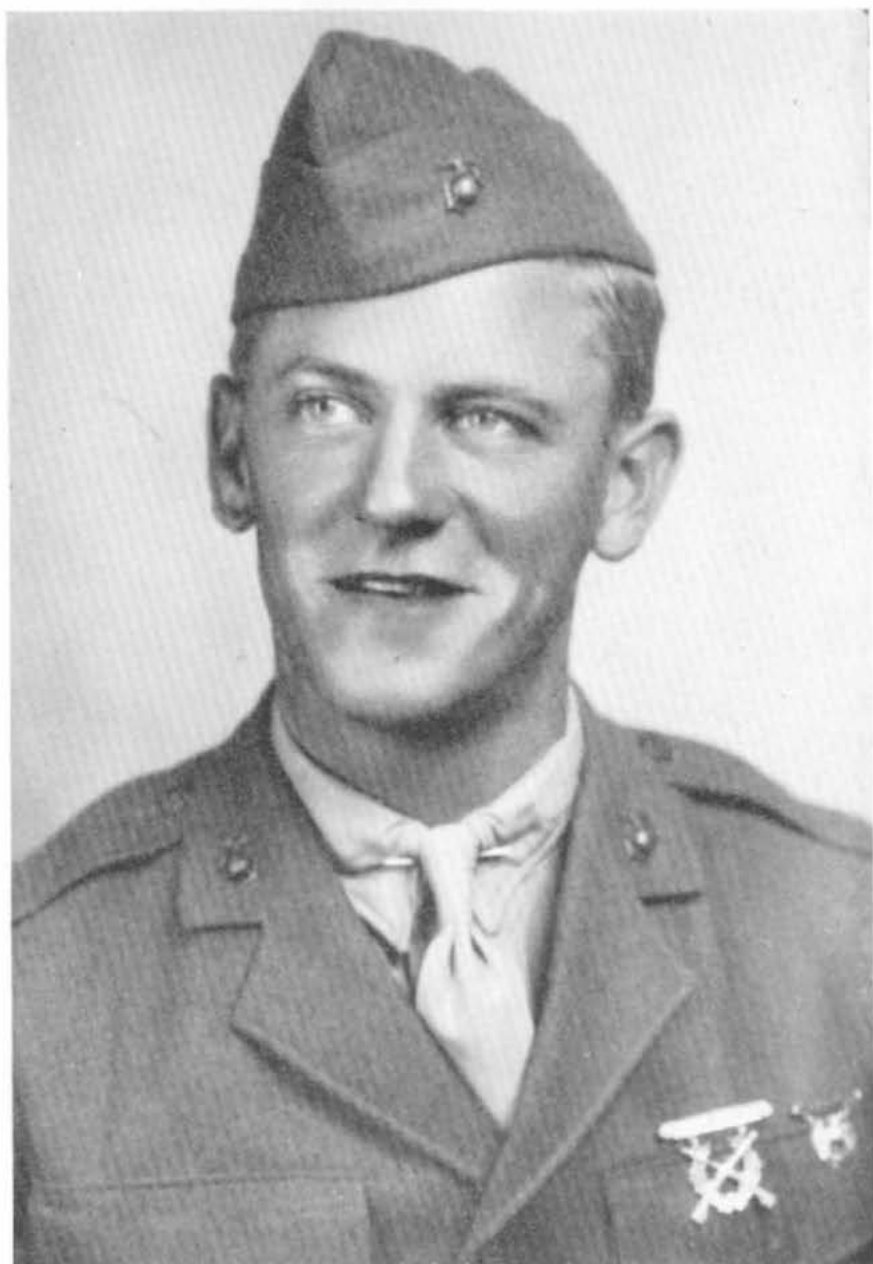
Tennyson

Sunset and evening star,  
And one clear call for me!  
And may there be no moaning at the bar,  
When I put out to sea.

But such a tide as moving seems asleep,  
Too full for sound and foam,  
When that which drew from out the boundless deep  
Turns again home.

Twilight and evening bell,  
And after the dark!  
And may there be no sadness of farewell,  
When I embark;

For tho' from out our bourne of Thine and Place  
The flood may bear me far,  
I hope to see my Pilot face to face  
When I have crossed the Bar.



## IN MEMORIAM

RALPH L. CROSWELL

**Killed in Action on Gaudalcanal. Ralph was Ouachita's first man killed overseas.**

*"I am not afraid of tomorrow, for I have seen yesterday and I love today."*

*"I can do all things through Christ which strengtheneth me."  
Phil. 4:13.*

Ouachita Men Who Have Given  
Their Lives In World War II

---

EDWIN SMITH

RALPH MANN

RALPH STOCKEMER

JOE T. SIMPSON

GASTON SHOFNER

FRANK REED

# S P O R T S





## Coach "Bob" Cowan

Coach Bob Cowan, a graduate of Ouachita College, came to us this year as our new head coach.

His name is not new to Arkansas sports fans. As head Coach at North Little Rock he produced many outstanding teams.

As yet we have not seen him at the helm of Ouachita football and basketball teams but we are confident that when he leads the Tigers back to the sports wars that they will come home victorious.

## Sports Tidbits

Ouachita Abandons Inter-Collegiate Sport!! That headline came as a shock to the hundreds of Ouachitonians who had hoped against hope that the Alma Mater would carry on in spite of difficulties brought on by war. She had played one season after the other Arkansas Colleges had dropped sports and had come through with flying colors - - - a CHAMPION.

Now this notice shattered the dreams of another championship team. Down also

came the hopes of any sports activity on our campus. But Coach Cowan and the Ouachita spirit hadn't been counted on. These combined to give a fine intra-mural program which helped to ease the thought of the big sports events of the past.

This intra-mural program consisted of touch and basketball leagues. Both provided hot competition and many thrills to the spectators.

# Faculty Crowd See Leaders

Requested for the Southwest basketball lead head by coaches each, the Arkansas Razorbacks and the Rice Owls opened a two-game series Friday at the Houston high school gym, starting at 8:15. Razorbacks last week crushed the Christian Horned Frogs of Houston, while the Owls, coached by the Baylor Bears to Southern Methodist University, observers believe this series will determine the 1934 champions. It is exceptionally high in scoring of the two strong and the high school basketball may well find its 2600 capacity taxed for the first time in history.

**Bill Flynt** is the Arkansas pet. Bill Flynt, an ordained minister who has played basketball for two seasons as a points man for a coming head in the individual making scramble. Flynt, six inches high, is a fine all-around performer and it will be interesting to see how the Owls will handle him. Coach Jones of the Owls will pit Rusty Adams, his ace floorman and half guard, against the Parson. Darby, an adept hand himself in 15 points this year and has 15 in conference play, must win on long one-handers. Jones promises to be a merry battle with the Razorbacks with Rice's Hill who has played magnificent ball thus far, opposing Alvin Ben Jones, coach has 30 in two league engagements, will have an edge over Jones.

Nichols, Arkansas forward at 6 feet 10, and Jug Thompson, the Owls, who has made 28, are expected to wage a duel. Arkansas starters are at guard and Leon Penson. The seasoned Don Sisk and the untried Tommy Bosh at the opening Rice quintet is a replacement in the starting lineup for Lee Sims, injured his leg in practice play and was left in Fayetteville. Other members of Coach Lambert's squad are Frank Rice, Steve McKay, Rodie Rabin, Alvin McGaha and Charles

**Day's Sermon Is Basketball**

**HAROLD V. RATLIFE** will, Ark.—Take it from Bill Flynt, athletics and religion, a happy blend for a normal life. Bill ought to know—he's done it a 60th.

Bill is a full-fledged minister of religion and also a main cog in university of Arkansas basketball with Southwest Conference play.

Bill's basketball, chorals are a Saturday night, he is his car and sets out for 1250 Sabbath activities.

Bill's basketball, chorals are a Saturday night, he is his car and sets out for 1250 Sabbath activities.

Bill's basketball, chorals are a Saturday night, he is his car and sets out for 1250 Sabbath activities.

# 'Deno' Nichols To Join Razorbacks

Special to the Gazette. Arkadelphia, Dec. 11.—Louis ("Deno") Nichols, senior and one of the greatest athletes of all time at Ouachita College, left tonight for Fayetteville to enter the University of Arkansas and play basketball. He will be a physical trainer with a military unit.

Nichols is classed 4-F because of a throat condition which has caused his rejection by the armed forces.

He made the high school all-state team several times while at Warren, his home town, and was all-state at Ouachita. He received the Nell Martin trophy this year awarded by the A. A. U. to the most outstanding athlete in the state. He has starred in basketball, football, track, baseball, and as a swimmer and diver, and makes only A's and B's in school work.

Nichols refused a contract sent him by the New York Giants professional football team last fall, preferring to finish his college course.

He hopes to get in shape to play with the Razorbacks in Madison Square Garden, New York city, December 28.

Nichols is the second outstanding Ouachita athlete to join the Razorbacks recently. Bill Flynt, Junior, star in the national tournament at Denver in 1931, went to Fayetteville several weeks ago.

The Porkers have lost but twice in nine starts this year to DePaul, the No. 1 national ranking team, and to Albright. They defeated C. C. N. Y. in Madison Square Garden.

**Mackenzie to Play**  
John Mackenzie, who came through in fine style for Rice in the S. M. U. game when a spark was needed badly, is slated to see much service. Mackenzie has been replacing Roseh early.

Last season Rice dropped the series opener to Arkansas at Fayetteville, and the next night started a nine-game Southwest conference winning streak which carried Joe Davis' men to a share of the title with Texas. So here Friday the Owls will be seeking their twelfth straight win in league play.

# Ouachita Cage Star Transfers To the University.

Special to the Gazette. Arkadelphia, Nov. 26.—William Flynt, former all-state high school basketball forward at Beebe, and for two years an outstanding forward on the championship college team at Ouachita, has transferred to the University of Arkansas where he will join the Razorback cagers for the winter season.

Flynt starred in Ouachita's games in the national basketball tournament at Denver in 1931, and largely was responsible for his team's victory over the Faultless Laundry team of Kansas City, one of the top flight entries that year. Bill scored 19 points in that encounter which resulted in Ouachita's surviving as the last college team in the tournament.

Louis ("Deno") Nichols, Ouachita's No. 1 basket ball star and this year's winner of the Nell Martin trophy as the athlete of the year in Arkansas, still is at Ouachita where he expects to graduate next May. Nichols is an athletic instructor for aviation cadets in the 97th College Training Detachment here.

Bill Flynt is a regular starter for the Razorbacks and bids fair to take his place in Arkansas basketball history as one of the stand-out performers in two decades. Beebe Bill seems as an important cog in the machine which seeks to bring Arkansas its eleventh championship in 21 years of conference play.

A former star at Ouachita college, where he was a regular for two seasons, 21-year-old Flynt did his prep work at Beebe, home and training grounds for some of the finest basketball talent developed in Arkansas. At Beebe, where he learned the fundamentals under Coach Ambrose ("Bro") Erwin, Flynt was named on the Arkansas all-state high school team in 1931.

# Porker Cager Also Baptist Minister

Fayetteville, Ark., Dec. 18 (AP).—Lanky Bill Flynt of Beebe, who bids fair to hold a starting berth with the Arkansas Razorbacks in the Southwest Conference basketball race, combines preaching with going to school. He is an ordained Baptist minister.

A former star at Ouachita College, Arkadelphia, where he was a regular for two seasons, 21-year-old Flynt did his prep work at Beebe, proving ground for some of Arkansas' finest basket ball talent. He learned the fundamentals under Coach Ambrose ("Bro") Erwin, and was named on the Arkansas all-state high school team in 1931.

When he joined the Razorbacks, the Lonoke county youngsters teamed up with an old mate, Ben Jones, the only letter man on the 1932-33 Razorback squad.

Flynt has been a Baptist minister since being ordained at Wattenaw in 1929. Each Sunday, he preaches at Perryville, 150 miles from the university campus, driving there in his car each Saturday night.

"Beebe Bill" hails from a basket ball family. Two brothers, Alvin and Clayton, once starred for Arkansas State Teachers College, Conway. Alvin was captain of the state college champion team in 1929.

# Ouachita Cage Star Transfers To the University.

Special to the Gazette. Arkadelphia, Nov. 26.—William Flynt, former all-state high school basketball forward at Beebe, and for two years an outstanding forward on the championship college team at Ouachita, has transferred to the University of Arkansas where he will join the Razorback cagers for the winter season.

Flynt starred in Ouachita's games in the national basketball tournament at Denver in 1931, and largely was responsible for his team's victory over the Faultless Laundry team of Kansas City, one of the top flight entries that year. Bill scored 19 points in that encounter which resulted in Ouachita's surviving as the last college team in the tournament.

Louis ("Deno") Nichols, Ouachita's No. 1 basket ball star and this year's winner of the Nell Martin trophy as the athlete of the year in Arkansas, still is at Ouachita where he expects to graduate next May. Nichols is an athletic instructor for aviation cadets in the 97th College Training Detachment here.

# HE'S AT HOME ON COURT OR IN THE PULPIT

## Preaching Porker Is Cage Ace

Special to The Tulsa World. FAYETTEVILLE, Ark., Dec. 18.—Preaching and basketball playing form an admirable combination in the ranks of the nobility of Arkansas basketball on the eve of the Southwest conference championship race and Coach Gene Lambert is wearing a broad smile these days.

An ordained Baptist minister, Bill Flynt of Beebe, is a regular starter for the Razorbacks and bids fair to take his place in Arkansas basketball history as one of the stand-out performers in two decades. Beebe Bill seems as an important cog in the machine which seeks to bring Arkansas its eleventh championship in 21 years of conference play.

A former star at Ouachita college, where he was a regular for two seasons, 21-year-old Flynt did his prep work at Beebe, home and training grounds for some of the finest basketball talent developed in Arkansas. At Beebe, where he learned the fundamentals under Coach Ambrose ("Bro") Erwin, Flynt was named on the Arkansas all-state high school team in 1931.



# PORKERS SCORE 680 POINTS OVER YEAR TO SET NEW MARK

College Station, Tex., Feb. 24 (AP).—Arkansas tied up the Southwest Conference basketball ball race here tonight by trimming the Texas Aggies, 60 to 54. The Razorbacks held a halftime lead of 29-34.

The Porker's 60 points enabled them to surpass the season at southwest scoring record of 569, set by Rice last week, with a new total of 680 points. Arkansas averaged 88.3 points per conference contest.

Parson Bill Flynt of Arkansas again battered 1,000 on field goals, shooting five times and hitting the goal. He converted three of six free shots, but his 13 points were two behind Mike Schumacher's 25. The latter, also a Porker, made three goals in each period and made good three free shots.

Nichols of Arkansas was held to seven points, all made in the second half. Wheeler put 11 points through the hoop for the Porkers as did Jones.

For the Aggies little Red Burditt was high with 12 and Elias made 8. It was a rough game, the Aggies fouling 19 times and the Porkers 11.

TEXAS A. & M.	PO	FT	FP
Burkett, forward	1	1	1
Wardlaw, forward	1	1	1
Burditt, forward	2	2	12
Wheeler, forward	1	1	2
Elias, forward	1	1	2
Erwin, forward	1	1	2
Whinn, center	1	1	2
Michell, center	1	1	2
McGaha, guard	1	1	2
Cherry, forward	1	1	2
Elias, guard	1	1	2
Parson, forward	1	1	2
Alvin, center	1	1	2
Texas	57	4	15
ARKANSAS	60	11	20
Wheeler, forward	2	2	11
Rankin, forward	1	1	2
McGaha, forward	1	1	2
Alvin, forward	1	1	2
James, center	1	1	2
Hagan, forward	1	1	2
Flynt, guard	1	1	2
F. Schumacher, guard	1	1	2
Flynt, guard	1	1	2
Donnell, guard	1	1	2
Texas	54	11	20
ARKANSAS	60	11	20

Free throws missed: Stewart, 2, Burditt, 2, Alvin, 1, Jones, 4, McGaha, Nichols 2, F. Schumacher, 1, Flynt 1.

Officials: Al Corbin, umpire; Gene Bedford, referee.

Bill Flynt, who has played basketball for two seasons at Ouachita College, Arkadelphia, where he was a regular for two seasons, 21-year-old Flynt did his prep work at Beebe, home and training grounds for some of the finest basketball talent developed in Arkansas. At Beebe, where he learned the fundamentals under Coach Ambrose ("Bro") Erwin, Flynt was named on the Arkansas all-state high school team in 1931.

In joining the Razorbacks, Beebe Bill teams up with an old mate, speedy Ben Jones, the only Razorback letterman with the 1932-33 squad. They followed such outstanding players as immortal Johnny Adams and O'Neal Adams to the Fayetteville campus.

Beebe Bill has been preaching for nearly six years, each Sunday finds him in the pulpit. He is a regular for two seasons, 21-year-old Flynt did his prep work at Beebe, home and training grounds for some of the finest basketball talent developed in Arkansas. At Beebe, where he learned the fundamentals under Coach Ambrose ("Bro") Erwin, Flynt was named on the Arkansas all-state high school team in 1931.

# Flynt And Nichols Make All-Southwest

Dallas, Feb. 24 (AP).—Four school landed players on the all-Southwest Conference basketball ball team with Rice and Arkansas, which set the season's pace, each placing two.

Again it turned out to be a sextet instead of quintet when two men tied for one position. Hagan and Henry were unanimous choice while Flynt and Nichols each received five votes and Thomas and Chronister three.

Others figuring in the selections were Roy Cox of Texas and Ben Jones of Arkansas, with two votes each, and Clarence Darling of Rice one. Cox is a forward, Jones a guard and Darling a guard.

There were only two seniors of the team—Chronister and Nichols—and there were two sophomores probably the first time in history for that many second-year men on a team.

The team, selected by the seven coaches, follows:

Player	Position
James Hagan, A. & M. U.	Forward
Bill Flynt, Arkansas	Forward
Bill Henry, Rice	Center
Clayton Chronister, T. C. U.	Guard
A. D. Thomas, Rice	Guard
Deno Nichols, Arkansas	Center

Bill Flynt, who has played basketball for two seasons at Ouachita College, Arkadelphia, where he was a regular for two seasons, 21-year-old Flynt did his prep work at Beebe, home and training grounds for some of the finest basketball talent developed in Arkansas. At Beebe, where he learned the fundamentals under Coach Ambrose ("Bro") Erwin, Flynt was named on the Arkansas all-state high school team in 1931.

In joining the Razorbacks, Beebe Bill teams up with an old mate, speedy Ben Jones, the only Razorback letterman with the 1932-33 squad. They followed such outstanding players as immortal Johnny Adams and O'Neal Adams to the Fayetteville campus.

Beebe Bill has been preaching for nearly six years, each Sunday finds him in the pulpit. He is a regular for two seasons, 21-year-old Flynt did his prep work at Beebe, home and training grounds for some of the finest basketball talent developed in Arkansas. At Beebe, where he learned the fundamentals under Coach Ambrose ("Bro") Erwin, Flynt was named on the Arkansas all-state high school team in 1931.

Beebe Bill has been preaching for nearly six years, each Sunday finds him in the pulpit. He is a regular for two seasons, 21-year-old Flynt did his prep work at Beebe, home and training grounds for some of the finest basketball talent developed in Arkansas. At Beebe, where he learned the fundamentals under Coach Ambrose ("Bro") Erwin, Flynt was named on the Arkansas all-state high school team in 1931.



## Ouachita Cage Stars

We would like to dedicate these pages to two outstanding Ouachita College athletes, "Deno" Nichols and "Parson" Bill Flynt.

Well known throughout the state for the brilliant play on the Ouachita quintet, these basketball lovers transferred to the University of Arkansas to continue their playing when it was learned that the Alma Mater had dropped inter-collegiate sports for the duration.

Nichols, three time all state at Ouachita and winner of the Neil Martin trophy, did much to aid the University in its successful drive for the Southwest Conference crown. He was consistently a high scorer and won added fame by his sensational shots from all parts of the court.

"Parson" Flynt, who had this nickname dubbed on him while playing in New York, was more than a spiritual help to the team. His smooth play and cool head won him much recognition as an ace.

Incidentally both boys were named on the All Southwest Conference team.







Campus Sports  
—  
Pretty, aren't  
they?





MORE SPORTS!  
 MORE GIRLS!  
 But what else  
 have we?  
 M E N !



---

## EDITOR'S NOTE

OUR HATS OFF to those who have spent midnight (no joke) oil on this brain child! We make no excuses for mistakes because we are too thankful we have an annual at all, considering no film, no pictures, no paper, no men, no nothing, and Fausett's burning. We hope you'll laugh at it and love it because it is for you.

OUR THANKS to our advertisers! Without them there would have been no Ouachitonian 1944! For their time, money, and kindness we are grateful!

---



Many new products and improved methods are born in the Crossett research laboratories.

Crossett's sawmills produce millions of board feet of lumber annually.



## PERMANENCE

*founded on*

## FOREST INDUSTRIES

Timber is Arkansas's only natural resource which replenishes itself. Crossett perpetuates that replenishment by harvesting timber as a crop under a conservation and management program which embraces conversion of every by-product of lumber manufacture into commodities of commercial value. Significance of these enterprises is, that through them, Crossett has become established as a permanent industrial community and a sustaining factor in the steady growth of its home state.

### THE CROSSETT COMPANIES

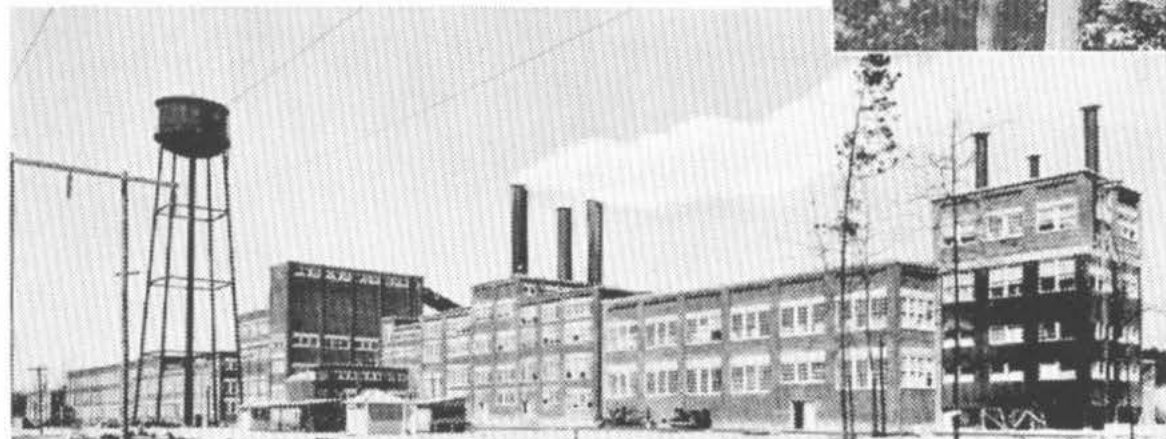
CROSSETT, ARKANSAS



Above: Crossett chemical plant, producing methanol, acetic acid and related wood distillation products.

Right: Under Crossett's forest management program new growth is appearing each year to produce merchantable timber in the years to come.

Below: Crossett Paper Mill, one of the South's largest producers of kraft paper and pulp. Another example of Crossett's intensive program of conservation by utilization.



# CONGRATULATIONS

*To You . .*

The students whose ability and hard work have made this book a success.

*To You . .*

The student body of Ouachita College, who through your scholastic accomplishments, are fitting yourselves for tomorrow's positions of leadership.



CARE FOR YOUR CAR  
FOR YOUR COUNTRY

## LION OIL REFINING CO.

El Dorado, Ark.

T. H. Barton, Pres.

PRODUCERS . REFINERS . MARKETERS



Studying—e r—the comics?



Our two best eligibles.

Is it really funny?

That ain't Texas, brother!

No 'foolin'.

Patriotic foursome.

Enroute to town.

Two of our best.

Radiating personality plus.

Don't tell me that he works.

Introducing the champion.

Finale ! ! ! !

Can't something be done about this?

Getting down to business.

Hey—the Navy rates here.



## C A L E N D A R

Monday, Sept. 6 — Open-mouthed Freshmen observing the splendor of Ouachita's Campus. Tour conducted by Daniel Grant.

Tuesday, Sept. 2—Talent Parade by Freshmen. At request of Seniors.

Wednesday, Sept. 8—Prayer meeting for the first time. Upper classmen make headway with Froshs.

Thursday, Sept. 9—Church Welcome social. First classes met—ugh!

Friday, Sept. 10—Great big formal reception on lawn of Cone Bottoms. Shake Shake Shake—Hands I mean.

Saturday, Sept. 11—First week-end and what a Week-End? Some Girls.

Sunday, Sept. 12—Join the Church Day—Everyone discovered what wonderful Student Secretary we have.

Monday, Sept. 13—Here's our second week Freshmen! Your knees can stop shaking now.

Tuesday, Sept. 14—

Early to bed

Early to rise

Makes a man

Healthy, wealthy, and sleepy.

Wednesday, Sept. 15—Prayer meeting and all Freshmen attend! At the request of Seniors of course.

Thursday, Sept. 16—I don't know.

Friday, Sept. 17—Duncan Flanagin throws big rush party at home. Our girls initiation stopped. Sorry.

Saturday, Sept. 18—Sleep—Sleep—Sleep.

Sunday, Sept. 19 — Surprise! Ice cream and pork chops for dinner.

Monday, Sept. 20—Freshmen initiation duck walk—duck walk—duck walk. Sore limbs—sore limbs—!

Tuesday, Sept. 21—Chaplain J. L. Blakely spoke to our student body.

Wednesday, Sept. 22—G. Maxwell Baker brought before Kangaroo Court—convicted—sentenced to a cold shower for 3 minutes.

Thursday, September 23—Freshmen initiation and a boy's quartet entertained.

Friday, Sept. 24—The Rains Came! Pro-gone—We finally decided to serenade the girls.

Saturday, Sept. 25—Few came to breakfast—Sleep's a wonderful thing—Huh!

Sunday, Sept. 26—O. D. James broke the 100-yard-dash—the stove exploded in the kitchen and did he run!

Monday, Sept. 27—Henderson Boys try to paint our tiger. There were about 30 of them and 100 of us. They ran!

Tuesday, Sept. 28—Boys Freshman initiating ended. Lovely night air—walk!

Wednesday, Sept. 30—Fine Arts program in chapel—Rowe sang 'Nuff said?

Friday, Oct. 1—We liked to have got fooled. The soldiers in E. Flight painted our tiger. We thought it was Henderson.

Saturday, Oct. 2—A glorious fall day.

Sunday, Oct. 3—Everyone went to church. *Extra special food*. Much kooking done by soldiers and students.

Monday, Oct. 4—The old grind started again. My! how short the week-end is.

Tuesday, Oct. 5—Happy day for Ouachita girls. A flight of cute cadets came in today.

Wednesday, Oct. 6—Dr. Daily in full swing if you know what I mean.

Thursday, Oct. 7—Chapel—ho hum! Why doesn't anything happen to me.

Friday, Oct. 8—Red Shirts' shirts smell of hay. Their hayride was really on the beam—of the moon, I mean.

Saturday, Oct. 9—Student Center bar was crowing with roosters and cackling with hens. New A Flight made quite a hit with The Hens.

Sunday, Oct. 10—Everyone went home.

Monday, Oct. 11—Back in the groove—rather trying to get back.

Tuesday, Oct. 12—Some one loves our tiger. We found lipstick all over it this A. M. It's a shame to waste that stuff on a cold thing like a tiger.

Wednesday, Oct. 13—Prayer meeting time and oh what a moon.

Thursday, Oct. 14—Basketball fans pour out of the gym cheering the Beta Beta's.

Friday, Oct. 15—Everyone got homesick at the last minute and so thumbs went up!

Saturday, Oct. 16—Pretty quiet place everyone home or studying.



FEEL AT HOME IN  
**OUACHITA BOOK  
STORE**

**SCHOOL SUPPLIES**

**NEW AND USED TEXT BOOKS**

**STATIONERY**

---

**WHEN YOU HAVE THAT EMPTY FEELING---COME IN FOR**

**COLD DRINKS    CANDY    SANDWICHES**

---

**PHONE 142**

**E. L. BREWSTER, MANAGER**



**ROYAL SHOE SHOP**

**WE MAKE YOUR OLD SHOES**

**LAST LONGER**

**BAND INSTRUMENTS**

**NEW AND REBUILT**

Complete Line of Accessories

**VISIT OUR SHEET MUSIC DEPT.**

**BEAN MUSIC COMPANY**

205-207 W. 6th St.

**LITTLE ROCK, ARKANSAS**

**COMPLIMENTS OF**

**C. J. HORNER COMPANY**

Wholesale Grocers

**HOT SPRINGS, ARK.**

**GIBBS TRUCK LINE**

L. R. Gibbs, Operator

**MALVERN, ARK.**

**"FOR GOODNESS SAKES"**

**IT'S**

**JACK SPRAT GROCERIES**

**CARPENTERS**

**FLOWER SHOP**

**FLOWERS FOR ALL OCCASIONS**

Phone 146—All Hours

**MEMBER F. T. D.**

**Houser Motor**

**Service**

Washing — Lubrication — Tires  
Batteries

**PACKARD SALES AND SERVICE**

**MAGNOLIA PRODUCTS**

Phone 143

**Arkadelphia, Ark.**



BSU President Conway Bound for Conventional!



Why, Dale Cowing, we thought so and now we know!



Off for a choir trip — what joy they'll bring.

Say, Kids, I'm soaking wet already, have a heart.

Lehman Webb, why so solemn? They didn't mean to leave you out of the huddle.



Just an example of a search ended: he just saw her two hours ago.

Really, Opal B. is that what seniors do to make impressions?

Yeah, a Ferdinand session.



The Rev. James Luck.

What th'—Oh, just had your room stacked?

Smiling, as usual, Lila!

Pledge, you will have my shoes shining in five minutes. Period.

Oh, Sam! If your mother could see you now!

Miss Scruggs, don't fuss at her, she's been working all day.

Cute little tricks, aren't they?

Yes, sir, James cleaned up on Duncan and Sammy. Ho!

Lazy or tired?

This is Miss Provine, our youngest beauty!



## CALENDAR

Sunday, Oct. 17—Church—dinner.  
Monday, Oct. 18—Hot cakes for breakfast with good old cold Zip!  
Tuesday, Oct. 19—Boys R. O. T. C. came out sporting beautiful blouses with blue lapels. All the freshmen girl's eyes were on ends.  
Wednesday, Oct. 20—  
Hickory, dickory, dock  
The mouse ran up the clock  
The clock struck one  
Mr. Price went out to lunch.  
Friday, Oct. 22—Everyone flitting around getting ready for the B. S. U. Convention in Conway—Buses left at 1:30. 100 students from Ouachita.  
Saturday, Oct. 23—A bare Campus I wasn't here.  
Sunday, Oct. 24—B. S. U. Convention over. Everyone tired and sleepy. Many wonderful tales told and our tiger was painted the most wonderful color of red—Who Dood it?  
Monday, Oct. 25—It's cold.  
Tuesday, Oct. 26—A flock of geese flew over.  
Wednesday, Oct. 27—We beat the soldiers in basket ball.  
Thursday, Oct. 28—  
Roses are red  
Violets are blue  
I can't remember what happened today  
And neither can you.  
Friday, Oct. 29—Every Friday everyone goes home. Party at Gym and the Virginia Reel was fun.  
Saturday, Oct. 30—Touch football on the campus brought back old memories.  
Sunday, Oct. 31—Had a wonderful dinner. Of course this is Sunday.  
Monday, Nov. 1—It's gonna rain all month according to old superstition. It rained on the first Monday in the month.  
Tuesday, Nov. 2—1st issue of Ripples out today—Ripple-Ripple-Ripple.  
Wednesday, Nov. 3—The faculty met and decided to let us have two days off for Thanksgiving. Ain't that O.K.?  
Thursday, Nov. 4—Another "Jack" makes his appearance on the Campus—Jack Frost!

Friday, Nov. 5—Everyone anxious for Charles Wells.  
Saturday, Nov. 6—It rained tonight and white rocks fell with it. They told me it was Hail but it felt awful cold to me!!!  
Sunday, Nov. 7—Charles Wells met with all our high expectations.  
Monday, Nov. 8—Whoever said Monday was blue?  
Tuesday, Nov. 9—Charles Wells spoke in chapel. How we are enjoying him!  
Wednesday, Nov. 10—On top of Charles Wells' wonderful lectures we are having a harvest moon.  
Thursday, Nov. 11—Aughey has a scratch on her finger and one on her leg. Where and how Gertrude?  
Friday, Nov. 12—Charles Wells made his last stand on Ouachita soil. He left prints never to be erased.  
Saturday, Nov. 16—The moon is in full bloom and Ouachita Freshman found out that "neck" was a verb instead of a noun in Ouachita language.  
Sunday, Nov. 14—Thanksgiving two weeks early. Our dinner was dee-licious!  
Monday, Nov. 15—Monday morning—Monday afternoon—Monday night—still nothing has happened.  
Tuesday, Nov. 16—The girls seemed to have outsmarted the boys in Chapel. They had a score of 14 to our 13. Questions were on Dr. Pettigrew's Literature.  
Wednesday, Nov. 17—The Ponderings of "A Lovesick Youth"  
As I sit and gaze afar,  
How I wonder where you are  
And what the heck you're doing.  
Friday, Nov. 19—Big Home Ec party at Colonial Tavern. Formal with all the trimmings. Petty Tatum had to have her meat cut in the kitchen—Know why?  
Saturday, Nov. 20—There will be sore legs and arms tomorrow? Luck gave us all calisthenics tonight.  
Sunday, Nov. 21—Everyone in rooms today. Maps due Wednesday.  
Monday, Nov. 22—"Stormy Weather."



SCOTT-MAYER  
COMMISSION  
COMPANY

LITTLE ROCK, ARKANSAS

---

WHOLESALE DEALERS IN  
FOREIGN AND DOMESTIC  
FRUITS, PRODUCE AND  
GROCERIES

---

DISTRIBUTORS OF  
HART BRAND CANNED  
VEGETABLES  
PRATT-LOW CANNED  
FRUIT

---

WE SEARCH THE MARKETS  
OF THE WORLD FOR GOOD  
THINGS TO EAT

KREBS  
BROTHERS  
SUPPLY  
COMPANY

COMPLETE EQUIPMENT  
FOR  
HOTELS            CAFES  
CLUBS  
AND  
HOSPITALS

---

413-15 WEST FIFTH AVENUE  
LITTLE ROCK, ARKANSAS

---

PHONE 6133  
Long Distance 140

Sunday and Night Phones  
9415 or 2-2901

## MURRY FUNERAL HOME

On the Broadway of America  
FUNERAL CHURCH  
PACKARD AMBULANCE SERVICE  
BURIAL PROTECTION  
At Minimum Cost  
Phone 206

## EQUITABLE LIFE OF NEW YORK

LIFE ASSURANCE & ANNUITIES

LARKIN M. WILSON  
AGENCY MANAGER

210 Boyle Building

LITTLE ROCK, ARKANSAS

## C A L E N D A R

Tuesday, Nov. 23—"The Green Light" affected Dale Cowling! He chased a new freshman over the hill and dale and then around and around the Ad building. Dr. Epton administered to poor Dale.

Wednesday, Nov. 24—Every one left for home. Except Jimmie Beals and you can guess what he stayed at school for?

Thursday, Nov. 25—I hope you all lightened the weight of a turkey about ten pounds.

Friday, Nov. 26—Doses of bicarbonate, Tums, and maybe castor oil to try to settle that turkey.

Saturday, Nov. 27—Lazy Saturday.

Sunday, Nov. 28—One by one the students trickle back, stuffed with turkey and all stuff like that.

Monday, Nov. 29—Thanksgiving holidays over. We now begin counting the days until Christmas vacation.

Tuesday, Nov. 30—Hundred Point History test tomorrow and the lights went off for two hours. Everyone was singing, "When The Lights Go On Again All Over The North Dormitory."

Wednesday, Dec. 1—All tests over and Wyley Joe Elliott has decided to be an Organic Chemistry Teacher.

Thursday, Dec. 2—All the decorations given the final touches for the big party tomorrow. The pledges did as much work as the members, maybe more.

Friday, Dec. 3—What excitement, Big SAS formal! Luck had a date with a long black Buick and Mitch thought enough of Marcia to send her an exquisite orchid.

Saturday, Dec. 4—We had a dense fog today or was that the smoke left from the SAS party.

Sunday, December 5—All good little boys and girls go to church.

## COMPLIMENTS

# HUMPHREY'S DAIRY

"WHERE THE BEST MILK GROWS"

ARKADELPHIA - HOT SPRINGS - MALVERN, ARKANSAS

STEPHEN'S DRUG  
STORE

THE  
REXALL STORE

MEN'S WEAR OF  
DISTINCTION

Home of Rockley, Society Brand and  
Oxford Clothes

BAUMAN'S  
MEN'S SHOP

302 Main St. Little Rock

COMPLIMENTS

FRANK M. COCHRAN, JR.  
'43

BRADLEY, ARK.

U. S. ARMY  
NEW CALEDONIA

E. W. MCCLAIN'S  
FEDERATED DEPT. STORE

The Home of

RED GOOSE SHOES

Arkadelphia, Ark.

SLOAN'S  
DRUG  
STORE

OUR FOUNTAIN SERVICE IS  
THE BEST IN TOWN

---

WHITMAN'S  
CANDIES

---

PHONE 25

---

ARKADELPHIA,  
ARKANSAS

COMPLIMENTS

OF

CLARK  
COUNTY  
LUMBER  
COMPANY

ARKADELPHIA

ARKANSAS

THE ELKHORN  
BANK & TRUST  
COMPANY

ARKADELPHIA, ARKANSAS

1884 - 1944

60TH YEAR

---

A FRIEND OF  
OUACHITA

---

YOUR ACCOUNT  
APPRECIATED

---

MEMBER F. D. I. C.  
AND  
FEDERAL RESERVE  
SYSTEM





MEET YOUR FRIENDS AT THE  
**BAPTIST BOOK STORE**  
BOOKS, BIBLES, CHURCH SUPPLIES

303 W. CAPITOL AVENUE

LITTLE ROCK, ARK.

**ARKANSAS BAPTIST**  
BAPTIST OFFICIAL STATE  
PAPER

Arkansas Baptist Readers are  
Arkansas Baptist Leaders

**C. E. BRYANT, EDITOR**  
213 RADIO CENTER  
LITTLE ROCK, ARKANSAS

INFORMATION  
INTERPRETATION  
INSPIRATION  
INDOCTRINATION

**MERCHANTS AND  
PLANTERS BANK AND  
TRUST COMPANY**

---

THE BANK OF  
FRIENDLY SERVICE

---

MEMBER F. D. I. C.

---

ARKADELPHIA, ARKANSAS



Bashful Beas.

We can look blank, too.

Beautiful gals and he looks at his hat.

Boo-co-tiful Ouachita

Inevitable trio.

Our Queen of Hearts.

Dear Henry.

No 18's, huh?

Ready, aim, fire!

Surprised you, didn't we?

Old Main.

At least they're in step.

Man shortage.

Across this lawn an endless stream—

The more we get together the merrier we'll be.

Having a wonderful time, thanks.

Goin' our way?

Typically Arkansas.

Spooky dorm tales.

Leanin' on the ole top rail.

## CALENDAR

Thursday, Jan. 27—Heck, I don't know that anything happened today!

Friday, Jan. 28—The sun has finally come out on Friday!

Saturday, Jan. 29—I over slept.

Sunday, Jan. 30—The choir had a glorious time at Barring Cross in North Little Rock. Aren't we proud of them?

Monday, Jan. 31—We hate to hear that our cadets are going to stop coming in every month don't we girls?

Tuesday, Feb. 1—The girls clubs began their pledging today. The E's certainly like blondes—and what blondes!

Wednesday, Feb. 2—So the Beta's have finally decided to come out and show their pledges. What could this mean?

Thursday, Feb. 3—Another Thursday, the students learned from a lecture just how not to overdress!!!!—in chapel I mean!

Friday, Feb. 4—Another Friday, another week, another day?

Saturday, Feb. 5—She stayed on the campus when she could have gone elsewhere. Could this be love?

Sunday, Feb. 6—The bluff was patronized today—violets in bloom and love, too.

Monday, Feb. 7—It's the day after Sunday!

Tuesday, Feb. 8—Chapel and the classes presented their candidates for Queen of Hearts—I'll tell you who won Friday!

Wednesday, Feb. 9—The moon shone bright this morning as we trodded to breakfast; it's a wonder we got to breakfast!

Thursday, Feb. 11—Billie Sue Glover is our Queen of Hearts! She is so lovely—yes, and she's a freshman, too!

Saturday, Feb. 12—Early to bed, early to rise, makes a man healthy, wealthy, and sleepy;

Sunday, Feb. 13—Beware all you poor innocent boys—to-morrow is the 14th.

Monday, Feb. 15—No ill effects from yesterday! Except some who already had the candy now have it worse.

Wednesday, Feb. 16—'Twas a cold dreary rainy dismal night. Lightening! Thunder! Howling dogs! The SAS pledges had to census the grave yard!

Thursday, Feb. 17—We read this today—If you love me like I love you, We'll both be friendly and untrue. . . . (My, My.)

Friday, Feb. 18—Beautiful day—perfect for loafing.

Saturday, Feb. 19—Saturday and hash for lunch.

Sunday, Feb. 20—Home again, Home again, Boy, was she sweet!

Monday, Feb. 21—"Blossom Time," an inspiration to lovers—boy I'm glad I went.

Tuesday, Feb. 22—We're sorry Miss Harrington had an accident at the opera Monday night. A Lt. came to her assistance—I wonder if she is sorry?

Thursday, Feb. 24—Two lovely cigarette girls were greeting us at breakfast this morning? They had on a high black hat; they gave out tooth-picks? ?

Friday, Feb. 25—SAS has party for pledges. It just poured down rain and we just sniffled and sniffled. Ever play?

Saturday, Feb. 26—Rest for the weary.

Sunday, Feb. 27—Who said Spring was here? Brrrrrrrr.

Monday, Feb. 28—Boy what a night for SAS pledges! Plaster, potatoes, paint, what's that Dr. Grant?

Tuesday, Feb. 29—Debate between Marilynn and Autry today in chapel. Marilynn said Dr. Daly's 100 pointers were harder than Dr. Pettigrew's number test. She won!

Wednesday, March 1—Sigma Alpha pledges at last become members last evening as they took the final ritual—nice going boys!

Thursday, March 2—New girls social club—Gamma Phi—elite, nice and we are for them.

Friday, March 3—BSU Party at Student Center—a lovely fire in the fire place. Alvis Carpenter can really dance Irish gigs.

Saturday, March 4—A beautiful day for walking—violets, birds, green grass . . . . . love.

Sunday, March 7—All Rho Sigma's sick today. They had their Founders Day Banquet last evening.

NICKELS, DIMES AND  
QUARTERS MAKE  
DOLLARS

THEY ALSO BUY MORE

AT

**STERLING'S**

5c, 10c, and 25c

**STORE**

ARKADELPHIA, ARKANSAS

COME TO SEE US  
PRESCRIPTIONS FILLED WITH  
CARE

WILL LEE'S DRUG  
STORE

Phone 138

Arkadelphia, Ark.

**STEIN'S**

THE LEADER IN MEN'S  
CLOTHING

ARKADELPHIA STEAM  
LAUNDRY

ALL NEW AND MODERN

LOGAN GROCERY CO.

WHOLESALE GROCERS

PRESCOTT AND ARKADELPHIA,

ARKANSAS

HARRIS SHOE AND  
PAWN SHOP

Best of Materials used in Repair Work  
featuring Lamac Weld or Invisible  
Soling

Money loaned on personal belongings  
for short time

BLUE AND GOLD SPIRAL

SCHOOL SUPPLIES

# **N. AND H. CAFE**

**HIGHEST QUALITY**

**FOODS**

**AT**

**LOWEST PRICES**

**SEA FOODS**

**EXTRA SELECT**

**OYSTERS**

**K. C. STEAKS**

**SANDWICHES**

**LUNCHEES**

# **THE CADDO CLEANERS**

**A FRIEND OF**

**OUACHITA**

**MODERN EQUIPMENT**

**PHONE 323**

**ONE-DAY SERVICE**



Home Ec. candle-light service.



Prissy!



I'll fly away—oh Glory!



Watch out boys, you are being spied on.



Oh! for a bean shooter.



Yes, Clyde, you can fly too.



Be sure to get enough rest.



No, this isn't Ziegfeld Follies.



Keep in step, boys.



Retreat.



Look at the birdie.



Help! Help!



We're ready for the next act.



TEN . . . . SHUN!

Beautiful, beautiful scenery.



Gimme a bite.



Tell us about it.



Hello friends.

## C A L E N D A R

Monday, March 6—We need foot-ball-bad!

Tuesday, March 7—Cadets are leaving us again. Tiger got three colors instead of the conventional Red. Blue and green added.

Wednesday, March 8—Dr. Head from Southwestern seminary is holding our revival—very good.

Thursday, March 9—Alvis Carpenter said he sprained his ankle—candy is easily broken.

Friday, March 10—Hack-Debat trip didn't mature—that means a Daily test!

Saturday, March 11—Rooms stacked and I don't mean just one!

Sunday, March 12—Our revival ended with Dr. E. J. Head—Quite good.

Monday, March 13—A day for nature lovers—Yes, and the night wasn't bad!

Tuesday, March 14—All ROTC Cadets come out sporting rifle marksmen medals to meet our new Captain Froom!

Wednesday, March 15—Ouachita is waiting for the sunrise! What's spring without sun?

Thursday, March 16—Captain Richardson met his last classes today. Thank you Captain for your help in our happiness while on Ouachita's Campus.

Friday, March 17—Happy Happy Happy Happy Happy Happy—Gosh, seems like I'm in a rut: maybe so, who knows.

Saturday, March 20—When hasn't it rained on Saturday? When I was sick and couldn't enjoy the sunshine?

Sunday, March 17—I think everyone stayed at home today and—well—slept. Is that unusual?

Monday, March 20—We hope that the career of Deno hasn't stopped. We pray his leg will knit back like iron!

Tuesday, March 21—Another version of Trees. I think that I shall never see, a poem lovely as a knee, a knee that may in summer wear, silk hose or else go bare.

Wednesday, March 22—One more week—Ohhhhh then four short days!

Thursday, March 23—Mary Alice Burns made her debut as a concert artist. My My how that gal can play!

Friday, March 24—Students in waiting, for the Spring holidays of course.

Saturday, March 25—Ah Ha—Pert was certainly on the beam last issue—please overlook the dirt.

Sunday, March 26—There are such things as good meals!

Monday, March 27—Duncan Mitchell left us for the service of his country. How we shall miss him?

Tuesday, March 28—Parting is such sweet sorrow!

Wednesday, March 29—Gone with the Wind are the Students of Ouachita. Spring Holidays Start.

Thursday, March 30—Spring Holidays!

Friday, March 31—Spring Holidays!

Saturday, April 1—Spring Holidays and April Fool!

Sunday, April 2—How shall I say Spring Holidays are over? Oh! Well, everyone knows it!

Monday, April 3—We all need a friend "Sleep" Oh these late buses.

Tuesday, April 4—I wanta go back home!

Wednesday, April 5—Dale and Olive are quite happy and why not?

Thursday, April 6—It's cloudy and threatening rain—Rex Morton wants to go walking.

Friday, April 7—I ain't gettin no lovin.

Saturday, April 8—High Hats really on the usual beam with their Spring Formal—Mitch sent Marcia an orchid. Ah Ha.

Sunday, April 9—Happy Easter—Comes to tell us that new life is here.

Monday, April 10—How many new bonnets we could see, feathers, birds, flowers, and fruit in abundance yesterday.

Tuesday, April 11—Shine on, Shine on Harvest Moon until Friday night. Our Juniors and seniors and their Banquet will need it.

Wednesday, April 12—When asked his age Pro Stewart primly replied: "I haven't told my age since I was 40, and if I can keep a secret for 15 years, I can keep it all my life."

COMPLIMENTS  
of  
ALLSOPP & CHAPPLE  
307 MAIN STREET  
LITTLE ROCK, ARKANSAS

TEMPLE COTTON OIL  
COMPANY  
Manufacturers of  
COTTON SEED PRODUCTS  
QUALITY FERTILIZERS  
"Arkansas' Leading Enterprise"

# CARTER'S Men's Store

THE MOST COMPLETE  
LINE IN ARKADELPHIA

Nick Carter, Proprietor

PHONE 20

ARKADELPHIA, ARKANSAS

## OUR NEW AND UNUSUAL SAVINGS PLAN

- \$100.00 Monthly for loss of time from Sickness—Payable from the first day (limited to 12 months under any one claim)
- \$100.00 Per month additional if confined to hospital—This benefit limited to 3 months only.
- \$100.00 Monthly for loss of time from Accident—Payable from the first day for life.
- \$100.00 Per month additional if confined to a hospital—for the first 100 months.
- \$20.00 Monthly to your family if you do not live—for the first 100 months.
- \$2750.00 Total Cash to you at Age 65. \$2,000 Guaranteed, \$750 Accumulated Dividends.
- \$2257.60 Total deposits.
- 492.40 Total profit even if you are never sick or hurt.
- 24.64 Average annual profit—even if you are never sick or hurt.
- 112.88 Annual deposit at Age 21—(9.81 Monthly deposit).

Men do get sick or hurt—When they do they need money.  
Men do get old—When they do they need money.  
Men do die—When they do families need money.

C. L. DURRETT, GENERAL AGENT  
PACIFIC MUTUAL LIFE INSURANCE COMPANY



# NICHOLS

WHERE GOOD THINGS TO EAT ARE ORIGINAL AND OUR  
PERSONAL SERVICE INDIVIDUAL

10 YEARS OF SERVICE CATERING TO COLLEGE STUDENTS

ACROSS FROM HIGH SCHOOL ON 11th STREET

WE DELIVER

PHONE 129

COMPLIMENTS

of

**NOWLIN FURNITURE  
COMPANY**

Bill and Boots, Owners

ARKADELPHIA, ARKANSAS

COMPLIMENTS

of

**GARRETT HOTEL**

EL DORADO, ARKANSAS

WE DEDICATE THIS SPACE AS A COMPLIMENT  
TO ALL OUACHITA COLLEGE

ITS FACULTY, REGULAR STUDENTS, AVIATION  
STUDENTS AND FRIENDS

A SPLENDID GROUP OF AMERICANS

MAY YOU REMEMBER US WITH KIND THOUGHTS AS YOU  
GO YOUR WAY THROUGH LIFE

# ROYAL & CO-ED THEATRES

Cecil Cupp, Owner



Smile, your majesty.



Think you'll ever learn, Miss Barbour?



She probably uses Ipana.



Look who we have here.



Um-m—a High Hat.



No whispering now.



Click!



Fall in.



Next—



Hold still.



Band practice.



Yum! Yum!



More soldier stuff.



Unposed.



Tell us right teacher.



Hello.



Confidentially.



Miss Plant, don't let them put poison in it.



R. O. T. C.

Short stuffs.

Home Ec. Initiation.

Watch or you'll catch cold.

## C A L E N D A R

Thursday, April 13—Foreign Relations Week has been a real success.

Friday, April 14—I got plenty of lovin'.

Saturday, April 15—Heck these Saturdays are as hard to write up.

Sunday, April 16—Back the church and back your future.

Monday, April 17—BSU on Parade Those beautiful Babes.

Tuesday, April 18—We didn't have to wear our blouses to military. That means Spring is here.

Wednesday, April 19—I asked what was new but no one could tell me.

Thursday, April 20—Rex Copeland left for the Army.

Friday, April 21—Rex Morton starts a new life today also. Yes, that's right—army. We're proud of you Rex and good luck!

### Beta Beta Formal

Saturday, April 22—BSU Retreat at Little Rock! Rifle Clubbers go picnicing.

Sunday, April 23—

- 1, 2 Buckle your shoe
- 3, 4 Shut the door
- 5, 6 Pick up sticks
- 7, 8 Lay them straight
- 9, 10 Big fat hen for dinner.

Monday, April 24—A special Monday—classes and no lessons etc.

Tuesday, April 25—Bonnell Stewart gave recital.

Wednesday, April 26—BSU Banquet and Installation Service—Quite nice.

Thursday, April 27—Oh Boy! Tomorrow is Friday!

Friday, April 28—SAS Spring Formal!

Saturday, April 29—WCF Formal!

Sunday, April 30—Fools stop their celebration.

Monday, May 1—Just a few more Sundays till we go back to our home churches.

Tuesday, May 2—This is May 2—so what!

Wednesday, May 3—My sister and I remember still a little—bit.

Thursday, May 4—Virginia Queen had some competition tonight but had no effect on her concert—even thought the ministers were doing the fish frying.

Friday—May 5—Choir has annual banquet.

Saturday, May 6—Gamma Phi First Banquet.

Phi Beta Chi Banquet.

Sunday, May 7—Lila Lee's birthday.

Monday, May 8—Yeah, same old day.

Tuesday, May 9—Heavens! Lab today.

Wednesday, May 10—You guessed it!

Thursday, May 11—Senior's picnic.

Friday, May 12—Man alive. . . . A whole week-end!

Saturday, May 13—Wash day—my socks were dirty.

Sunday, May 14—Backache!

Monday, May 15—Blue has given way to black!

Tuesday, May 16—Ice cream!

Wednesday, May 17—I'll make em you fly em.

Thursday, May 18—Day after Wednesday, oh said that before.

Friday, May 19—D. Grant wore his Beta Beta tie today, why?

Saturday, May 20—Student Election.

Sunday, May 21—June just around the corner.

Monday, May 22—Exams! Some people have a preview instead of review.

Tuesday, May 23—I ironed today.

Wednesday, May 24—Ouch! Burnt my finger!

Thursday, May 25—Meatless—no points.

Friday, May 26—(Editor's Note)—Annual has been to press for weeks—just waiting on our Calendar Editor!

Thursday, May 27—I'm going home!

IF IT'S

**BORDEN'S**

IT'S GOT TO BE

**GOOD**

---

BORDEN'S ICE CREAM  
COMPANY

TEXARKANA, ARKANSAS

**BLEVINS  
OIL COMPANY**

"IT'S A BETTER BUY AT  
BLEVINS"

EIGHTH AND CLINTON

PHONE 64

GARAGE

24 HOUR SERVICE

BODY WORK

DISTRIBUTORS

OF

PHILLIPS 66

PRODUCTS

COMPLIMENTS  
OF  
RANDOLPH HOTEL  
EL DORADO, ARKANSAS

MEET YOUR FRIENDS AT  
LIDO CAFETERIA  
Walter Oathout  
Oliver Harper  
615 MAIN STREET  
LITTLE ROCK, ARKANSAS

COMPLIMENTS OF  
**J. C. Penny Company**  
THE NEIGHBORLY STORE--FOR FORTY-TWO YEARS  
1902-1944

COMPLIMENTS  
OF  
HARDMAN LUMBER  
COMPANY  
ARKADELPHIA

COMPLIMENTS  
OF  
J. H. LOOKADO

FULLER'S DRUG STORE  
WE STRIVE FOR SATISFACTORY STUDENT SERVICE  
A COMPLETE LINE OF DRUGS AND TOILET ARTICLES  
PHONE 8 ARKADELPHIA, ARK.



My Buddy.

Same old thing.



Full, happy, and blank.

Playin' hide and seek?

Miss Crutchfield again!



We're sorry, fellows.

Bright southern sun!

Music, men, music.

Little Sarg.



1, 2, 3.

Forward, march.

I say, ole girl!

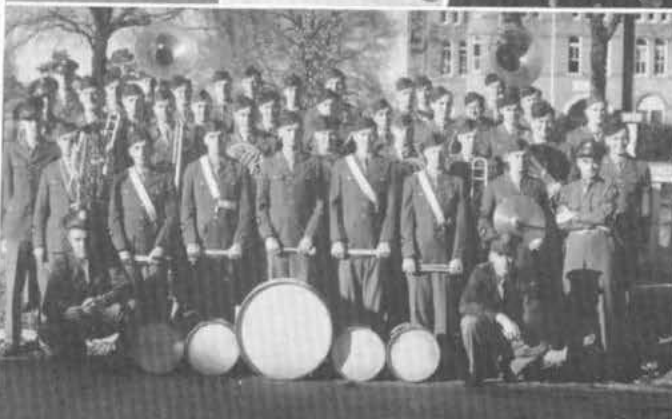
Lightened his weight by 3 pounds.



Mascot.

Beauty and brains.

Poor dear, he didn't get no lovin' that day.



On Parade for you.

Sunday afternoon.

# STUDENT CLEANERS

CONGRATULATIONS  
TO THE SENIORS OF '44

PROMPT  
EFFICIENT  
ACCOMODATING  
ON THE OUACHITA CAMPUS  
FRIENDLY CAREFUL  
SERVICE

Mr. and Mrs. E. W. Lloyd

# FARRIOR'S ARMY STORE

AUTHORIZED MILITARY  
SERVICE STORE

MILITARY  
OUTFITTERS



PHONE 6819

209 MAIN STREET

LITTLE ROCK, ARKANSAS

**W. D. TOBEY**  
WHOLESALE  
**FLOUR AND FEED**

Phone 166  
ARKADELPHIA, ARK.

COMPLIMENTS OF  
**SOUTHERN ICE CO.**  
COOLERATOR REFRIGERATORS  
AND CRYSTAL CLEAR ICE

Call 202  
ARKADELPHIA, ARKANSAS

**OUR CONGRATULATIONS AND BEST WISHES**

TO THE FACULTY AND STUDENTS OF  
OUACHITA COLLEGE

**ROBB AND ROWLEY**  
**THEATRES**

LITTLE ROCK, ARKANSAS

**RITCHIE GROCER COMPANY**

HOPE, ARKANSAS

WHOLESALE DISTRIBUTORS

HELTROPE FLOUR

NUTRENA FEEDS

LIBBY FOODS



WHEN YOU WANT

QUALITY AND  
STYLE

AT THE LOWEST POSSIBLE  
PRICE

COME TO

B. W. McCORMICK CO.  
ARKADELPHIA, ARKANSAS

THE CADDO HOTEL  
AND COFFEE SHOP

THE HOSPITALITY HOUSE

WHEN IN ARKADELPHIA  
COME AND SEE US

MRS. R. C. CUNNINGHAM  
Proprietress

WHEN IN LITTLE ROCK DRIVE INTO

**555**  
INC.

"THE WORLD'S LARGEST SERVICE STATION"

THIRD AND BROADWAY

EVERYTHING FOR YOUR CAR AT ONE STOP


# *In Printing*

THERE ARE MANY REASONS WHY  
SUCCESSFUL ANNUALS REQUIRE  
THE SERVICES OF EXPERIENCED  
AND EXPERT CRAFTSMEN

## HURLEY PRINTING COMPANY

HAVE THESE SERVICES . . . AND  
THE MOST NECESSARY COMPON-  
ENTS OF ALL REALLY FINE BOOKS  
. . . INCLUDING AN ORGANIZATION  
WHO HAS MORE THAN 15 YEARS IN  
PRINTING FINE BOOKS . . . FINE  
EQUIPMENT . . . MODERN AND  
COMPLETE. PRICES REPRESENTING  
MAXIMUM IN VALUE.

CAMDEN  
ARKANSAS



*"WE HERE face the changeless  
record of our own past and the  
unwritten record of our own  
future"*

## Fausett's Studio

Little Rock, Arkansas



*Your* **WARTIME ANNUAL**  
*a most treasured possession*



**I**n the years to come, this Annual will surely become one of your most treasured possessions.

In it are pictures of friends and classmates who may travel to the far corners of the globe—many of them fighting a war to preserve, for us, the right to express our traditional freedoms.

The right, for instance, to choose our own school—and the right to publish other annuals like this one, if we please.

Yes, your wartime annual, more than any other, will become more precious with the years.



*Arkansas'  
School Annual  
Engravers*

**PEERLESS ENGRAVING CO.**

FOURTH and LOUISIANA STS.



LITTLE ROCK, ARKANSAS