

THE
PINE BLUFF BAPTIST
ASSOCIATION

FORTY-EIGHTH SESSION

1911

Held With Leola Church, Grant County, Arkansas
October 14, 15 and 16, 1911

Elder J. W. KELLEY, Moderator, Prattsville Ark.
Elder E. L. PAGE, Clerk, Sheridan. Ark.

The next session of this Association will be held with
Landmark Church, ten miles south of Little Rock, com-
mencing at ten a. m., Saturday before the third Sunday in
October, 1912.

THE
PINE BLUFF BAPTIST
ASSOCIATION

FORTY-EIGHTH SESSION

1911

Held With Leola Church, Grant County, Arkansas
October 14, 15 and 16, 1911

Elder J. W. KELLEY, Moderator, Prattsville Ark.
Elder E. L. PAGE, Clerk, Sheridan, Ark.

The next session of this Association will be held with
Landmark Church, ten miles south of Little Rock, com-
mencing at ten a. m., Saturday before the third Sunday in
October, 1912.

ORDER OF BUSINESS.

1. Introductory sermon.
2. Call for reading letters.
3. Election of moderator, clerk and treasurer.
4. Invite ministers and brethren to seats.
5. Call for petitionary letters.
6. Appointment of committees.
7. Call for report of committees.
8. Call for treasurer's report.
9. Elect persons to preach introduction and missionary Sermon.
10. Elect corresponding messengers.
11. Miscellaneous business.

PROCEEDINGS

Saturday Morning, October 14, 1911.

The Pine Bluff Missionary Baptist Association met in regular session with Leola Baptist Church, Leola, Ark., at 10 A. M., Eld. J. W. Kelly, Mod., presiding. Prayer by Eld. J. F. Berry.

The annual introductory sermon was preached by Eld. W. B. McCool. Text, Acts 1:6.

The Moderator appointed as reading clerks, Ed. E. McDonald, T. C. Rushing and Eld. C. W. McDonald.

The Moderator appointed as a Committee on Divine Services, Brethren Dave Young, Fred Green, John Halbert, the Pastor and Deacons of Leola Church.

Part of the letters were read. Adjourned till 1:30 P. M.

Saturday Afternoon.

The Association was called to order by the Moderator at 1:30 P. M. Prayer by Eld. Joshua Halbert.

Completed reading the letters from the churches and names of messengers enrolled.

The following names were enrolled as visitors, viz: Eld. J. T. Christian, Little Rock; Eld. J. S. Rogers, Arkadelphia; Eld. W. M. Webb, Little Rock; J. A. Verser and J. E. Taylor of Saline Association; B. F. Barnes of Friendship Association; M. B. Love and W. H. Parker of Judson Association and G. A. Robinson of Oregon.

Petitionary letters were read from Bethel No. 1, and Marlow churches. The churches were admitted as members of the Association.

Election of officers resulted as follows: Eld. J. W. Kelley, Prattsville, re-elected Moderator. Eld. E. L. Page, Sheridan, re-elected Clerk and Treasurer.

The Moderator appointed the usual committees as follows:

Publications—W. B. McCool, F. E. Winston, E. L. Page.

Sunday Schools—W. A. Davenport, M. H. Carder, J. W. Avery

Ministerial Education—G. S. Anderson, E. F. McDonald, W. B. McCool.

Temperance—Joshua Halbert, A. F. Lamb, J. F. Berry.

State Missions—J. T. Ashcraft, W. D. McDonald, J. H. Donham.

Orphans' Home—C. W. McDonald, J. H. Shoptaw, M. S. Kelly.

Memorials of the Dead—J. W. Kelly, Joshua Halbert, John Halbert, W. B. McCool.

Foreign Missions—C. R. Powell, E. L. Page, T. C. Rushing.

Documents—E. F. McDonald, Herman Elrod, Oscar Ashcraft.

Finance—R. F. Burton, J. J. Wells, Jim Jagers.

[Associational] Missions—C. R. Powell, George Kelly, D. H. Sanford.

While the Moderator was appointing the committee, Elds. G. S. Anderson and J. S. Rogers addressed the audience.

On motion, the Treasurer's report for the year was read and adopted.

Committee on Divine Services reported as follows: Preaching tonight, W. M. Webb, Sunday, 10 A. M. Memorial service in honor of Eld. Wm. Tucker at 11 A. M. G. S. Anderson and at Methodist church, C. W. McDonald. At 3 P. M. C. R. Powell; at 7:30 P. M. J. W. Kelly.

By request, Bro. G. A. Robinson spoke concerning the work on the Pacific coast.

Adjourned till 7:30 p. m.

SATURDAY EVENING.

Association met pursuant to adjournment. The choir rendered some excellent music, led by C. W. McDonald. Prayer by Eld. J. W. Kelley.

Eld. W. M. Webb preached. Text, 2 Cor. 4:13. At close of sermon collection was taken for the Orphan's Home at Texarkana amounting to \$31.50.

Adjourned till 10 A. M. Sunday.

Sunday Morning.

Association met at 10 a. m. and choir sang several choice songs, after which Eld. J. W. Kelly led in the memorial service in honor of Eld. Wm. Tucker, by reading part of the 4th chapter of 2 Timothy and making a very appropriate talk to his memory. Elds. Joshua Halbert and W. B. McCool, co-workers for thirty years or more, Elds. J. F. Berry and J. W. Avery and Brethren John Habert, I. N. Rushing, W. A. Davenport and G. A. Robinson also spoke in high praise of him and expressed much regret of his departure but were consoled in the fact that they soon would meet him in the sweet beyond.

On motion, the Clerk was instructed to publish in the minutes photograph and biography of Bro. Tucker. Collection was taken to meet the extra expense, amounting to \$8.55.

At 11 A. M. Eld. G. S. Anderson preached. Text, Matt. 28:18-20 and Mark 16:15, 16, and at the Methodist church Eld. C. W. McDonald preached. Subject Missions. Collection was taken at both places for Associational Missions amounting to \$21.90.

Sunday Afternoon.

Association met at 3 P. M. Preaching by Eld. C. R. Powell. Text, 2 Cor. 5:14.

On motion, the Sunday School report was to be made at 7 P. M.

Adjourned till 7 P. M.

Sunday Evening.

Association called to order by Eld. C. R. Powell. Prayer by Elds. J. W. Avery and E. J. McKinney.

The report on Sunday Schools was read and discussed. At 8 P. M. Eld. J. W. Kelly preached. Text, Titus 3:8. After preaching, Sunday School report was adopted.

Adjourned till 8 A. M. Monday.

Monday Morning.

Association met at 8 A. M. Prayer by Eld. F. E. Winston.

Roll call and absentees noted.

On motion, speeches be limited to five minutes each.
The report of the Committee on Publications was read and adopted.

The report of the Committee on Ministerial Education was read, and after discussion, adopted.

The report of the Committee on Temperance was read, and after discussion, adopted.

The report of the Committee on State Missions was read and on motion, recommitted for revision.

The report of the Committee on Orphans' Home was read, and after discussion, adopted.

The report of the Committee on Memorials of the Dead was read, and after being amended, adopted.

The report of the Committee on Foreign Missions was read, and after discussion, adopted.

The report of the Committee on State Missions was read and adopted.

The report of the Committee on Documents was read, and after discussion, adopted.

The report of the Committee on Associational Missions was read, and after discussion, adopted.

Pledges were taken for Associational Missions. (See list.)

Be It Resolved by the Pine Bluff Association, That we hereby extend to the Leola church and citizens, our sincere thanks for their kind and generous hospitality during this session of our body. And we hereby pray God's blessing upon everybody who has made our stay so pleasant in Leola.

C. R. POWELL.

On motion, Eld. F. E. Winston was elected to preach Introductory sermon and Eld. C. W. McDonald to preach Missionary sermon at next session.

The report of the Committee on Finance was read and adopted.

Collection taken to pay amount due on Clerk's fees amounting to \$12.35. Debt of \$15.72 canceled.

On motion the Clerk was allowed \$15.00 for his services.

On motion, adjourned to meet with Landmark

church, at 10 A. M. on Saturday before the 3rd Sunday in October, 1912.

J. W. KELLY, Moderator.

E. L. PAGE, Clerk.

LIST OF MESSENGERS.

Those absent entire session marked **. Those absent on Monday, marked *.

Antioch—Not represented.

Alexander—Not represented.

Ain—J. C. Bradford,** John T. Carr, Nannie Carr.**

Benton—G. R. Kelley, T. A. O'Bryant, Bro. McCright.

Bethlehem—G. S. Anderson, Ella May Matheny.**

Big Creek—T. C. Rushing, J. F. Walker,** D. F. Shepherd.**

Bryant—Not represented.

Bethel No. 1—R. E. Harrison, J. W. Jaggers.

Corinth—E. L. Page, D. F. Wells, M. H. Carder.

China Grove—Not represented.

Cedar Branch—Thomas Kelley,* Jas. Heird,* Eliza Heird.*

East Union—N. H. Elrod, S. O. Ashcraft, W. M. Haynes.**

Ephesus—G. F. McCool, G. N. McCool, C. J. Elliott.

Fairview—H. P. Green, J. M. Kelley, C. S. Spann.

Germania—W. A. Spann,* Lizzie Sosebee,** M. Sanders.**

Gethsemane—By letter.

Harmony—Joshua Halbert, Jno. A. Halbert, D. A. Sanford

Harvest Bell—J. James,** A. M. Jordan,** J. I. Beek.*

Ironton—D. F. Kumpe, Homer Perry, J. R. Kumpe.

Liberty (Grant Co.)—P. Sheppard,** J. W. Holiman, W. A. Davenport.

Liberty, (Saline Co)—P. R. Gentry, E. E. Edmonson,** J. W. Bearden.**

Leola—Ernest Parnell, J. H. Harris, H. Deer.

Lost Creek—I. N. Rushing,* C. M. Taylor, Will Ne well.**

Lone Star—Not represented.

Landmark—R. F. Burton, W. T. Mooney, J. J. Wells.

Little Creek—J. W. Nelson,* R. C. Graves,* Clarence Nelson.*

Mt. Olive—C. F. Medlin, C. W. McDonald, W. L. Halbert.

Mt. Harmony—B. F. Allen,* J. P. Cate,* A. H. Westbrook.*

Mars Hill—Not represented.

Marlow—J. H. Shoptaw,* W. A. Webb,* D. H. Murray.**

New Friendship—J. W. Croxton, D. H. Young, S. W. Mixson.

New Hope—By letter.

New Liberty—Eric McCoy, Lula McCoy,** Emma Steel.

New Prospect—By letter.

Orion—J. B. Matthews,* G. D. Matthews,* I. L. Rinehart.**

Palestine—By letter.

Philadelphia—J. T. Ashcraft, W. B. McCool.

Providence—Andrew Shepard, Frank Murdock, Carroll Falls.**

Perry Smith—Not represented.

Pine Grove—Not represented.

Pleasant Hill—T. M. Mashburn, J. W. Grogan, Oliver Pettus.

Pilgrim's Rest—Not represented.

Reedville—L. L. Musgrove, Hollen Musgrove, Virdie Phillips.

Ruth—Not represented.

Redfield—By letter.

Sardis—J. W. Lybrand,** F. H. Clifton,* J. F. Green.

Shiloh—W. F. Owens,* J. F. Crouse,* T. A. Allen.*

Saline—J. T. Willman,** Pink Smith,** J. Q. Willman.

Sharon—Not represented.

Sweet Home—J. A. Grubbs,* W. B. Whitten, J. L. Stuckey.*

Spring Hill—Not represented.

Social Hill—A. H. Hope,** J. K. Moore,* W. M. Tatum.**

Walnut Ridge—W. H. Robisson,** G. W. Butler,** T. J. Vanlandingham.*

Zion Hill—C. R. Powell, J. C. Pierson, Marcus Turner.

TREASURER'S REPORT.

To amount received from Financial Committee, Oct. 17, 1910.

For minutes	\$ 34.75
For Associational Missions	5.25
For State Missions	32.26
For Home Missions	6.00
For Foreign Missions	3.00
For Orphans' Home	41.00

To Sunday's Collection (Home Missions) 32.42

To amount received from J. A. Bain, Oct. 17,

1910, O. H.50

To amount received from Ironton church, Oct 22, 1910.

For minutes75
For Home Missions.....	.75
For Orphans' Home80

To amount received from W. D. McDonald, Oct. 24, 1910.

For Associational Missions	18.00
For Home Missions	11.80
For Foreign Missions	8.90

To Sunday's Collection 35.23

Total\$231.41

By amount paid, G. G. Wray, State Missionary, Oct. 17, 1910	\$ 32.26
By amount paid, M. P. Matheny, Home Mis- sions, Oct. 17, '10	38.42
By amount paid, J. W. Sims, Orphans' Home, Oct. 18, 1910	41.00
By amount paid, J. A. Scarboro, Foreign Mis., Oct. 18, '10	3.00
By amount paid, J. A. Scarboro, Home Mis. Nov. 12, '10	12.55
By amount paid, J. A. Scarboro, Foreign Mis., Nov. 12, '10	8.90
By amount paid, J. W. Sims, Orphans' Home, Nov. 12, '10	1.30
By amount paid, L. B. White, printing minutes, Nov. 25, '10	22.00
By amount paid, on Clerk's Fees	9.18
By amount on hand to balance, Oct. 14, 1911 ..	55.48
Total	\$231.41
To amount on hand Oct. 14, 1911.	
For Associational Missions	\$ 23.25
Sunday's Collection	35.23
Total	\$ 58.48
Amount due on Clerk's fees to E. L. Page for 1910	\$ 5.82
Amount due on Clerk's fees to W. D. McDonald for 1909	9.90

E. L. PAGE, Treasurer.

COMMITTEE ON PUBLICATIONS.

We recommend first, the reading of the Bible, which will be a lamp to our feet and a light to our pathway. Second, we recommend the reading of the

Arkansas Baptist and aid in its circulation. We also recommend reading of Scarboro's Plain Truth. We further recommend that our churches use the Landmark Sunday School literature published by the Landmark Sunday School concern at Little Rock, Ark.

W. M. McCOOL, Chairman.

COMMITTEE ON TEMPERANCE.

We believe the use of intoxicating drinks as a beverage is contrary to the teachings of the scriptures. That intemperance is one of the greatest curses to the Church of God, and that it has created much sorrow, grief and death in many instances among the ungodly. We recommend total abstinence and a continuation of the hard fight against the saloon. We also recommend that the Pastors preach often upon this subject.

JOHN F. BERRY,
JOSHUA HALBERT,
A. F. LAMB.

COMMITTEE ON STATE MISSIONS

We, your Committee on State Missions, submit the following:

The great commission given by our Master makes it our duty to preach a pure gospel to every creature. While there is no State or national lines in the commission, yet our own relations to our own state appeals to us first, and since we have some destitution and a vast field occupied by those whom we believe are teaching for doctrine the commandments of men, all of those influences we have to meet. Therefore from every standpoint we urge to give and pray for State Missions.

W. D. McDONALD.
J. H. DUNHAM.
J. T. ASHCRAFT.

REPORT OF MINISTERIAL EDUCATION.

Baptists have always stood for education and especially for training with the ministry. First the divine call and then human equipment to the extent of personal opportunity. God touches and fires the heart

and places upon it the burden of the ministry, the training of the brain is man's responsibility.

For literary training the schools are multiplied and diversified and the facilities for an education are rapidly becoming more numerous and readily available. In pursuing a literary course we suggest that zealous care always be had in evading influences that would be detrimental to personal spirituality or that would sway the heart from its deep moorings in the sublime doctrines of our faith. We earnestly look to the speedy building of the college in Little Rock by the State Association, in which our ministry with our children may have the best opportunities of literary culture.

We recommend the Normal Bible School taught in Little Rock to all our preachers. The next term will be from Dec. 3rd to 23rd, 1911. In it the theory of scripture interpretation will be taught and the entire method given in the three weeks. The practical application of the principles of the method will be acquired following this course on the field and in the home. In the course the great texts and truths of the Bible will be analyzed and illustrated in the work. We would also recommend to our churches that they grant the pastors a vacation during the term of the school and aid them in meeting the expenses of the course.

This school gives to the preacher the basis of essential mental equipment for his great work for God and man, and aids in holding the preacher on his home field, not divorcing him from his sphere nor plans of work.

Respectfully submitted,

G. S. ANDERSON,
W. B. McCOOL.

COMMITTEE ON SUNDAY SCHOOLS.

We, your Committee on Sunday Schools, make the following report:

We regret that the interest is not taken in Sunday Schools that ought to be taken. We, your committee, pray that the pastors of our churches earnestly contend for a Sunday School in each of their churches and impress on the minds and hearts of the parents the

importance of attending Sunday School with their children.

The commission was given to the church and we know of no better place to begin this work than to begin at home in our churches and teach the child God's word in his youth.

We recommend, first, the Bible and second, the Landmark Series as the study in our Sunday Schools.

J. W. AVERY.

W. A. DAVENPORT.

M. H. CARDER.

COMMITTEE ON MEMORIALS.

Report of the Committee on Memorials:

Since our last meeting, we find that forty-two have died. Among the number, Eld. Wm. Tucker, one of the strongest and most influential ministers of the Pine Bluff Association. We greatly miss him because of his wisdom and safe counsel, but God has called him with others home. Therefore, let us be resigned to the will of Him who doeth all things well.

We request that hereafter the churches report the names of all their dead who died during the year, so that their names can be printed in the minutes.

J. W. KELLY.

JOSHUA HALBERT.

JOHN HALBERT.

W. B. McCOOL.

COMMITTEE ON ASSOCIATIONAL MISSIONS

Your committee finds that nothing has been done by the churches for Associational Missions during the past year, and we believe that the lethargy and inactivity so alarmingly manifest in our bounds is due to this fact. We also believe that the paucity of converts and baptisms in our churches is traceable to our carelessness and indifference toward this very important department of associational work. God can't bless and prosper our labors while we have none. The fields are white unto the harvest, but the ravages of time will destroy our prospects and blight our hopes if we wait until tomorrow. We must be up and about our Master's business today, or suffer irretrievable loss.

Your committee pleads for immediate action. We are able to support a missionary on the field for full time, and we believe our church will gladly do it if the importance of the matter is brought to their attention. To this end we make the following recommendations: First, that G. S. Anderson, T. A. O'Bryant, J. W. Avery, E. L. Page, Dr. Robt. F. Burton be appointed as a Missionary Committee, and that they be instructed to arrange with a missionary for all or a part of his time, the exact amount of time and the salary to be paid the missionary to be left to their judgment.

Second, that a collection be taken in pledges at this time as a basis for the Missionary Committee to work upon.

Respectfully submitted,

G. R. KELLEY.

C. R. POWELL.

J. E. McCOY.

COMMITTEE ON FINANCE

Your Committee on Finance beg leave to report that we find the amounts sent up by the churches for the various purposes as follows:

For Minutes	\$ 39.75
For Associational Missions	1.05
For Home Missions	9.80
For State Missions	53.05
For Foreign Missions	10.35
For Orphans' Home ...	36.06
Collection for Orphans' Home	31.50
Sunday's Collection (Associational Missions)...	21.90
Collection for Minutes.....	8.55
Collection for Clerk's fees, 1909 and 1910	12.35
Total	\$224.36

R. F. BURTON.

J. J. WELLS

J. A. JAGGERS.

COMMITTEE ON FOREIGN MISSIONS.

Foreign Missions means preaching the gospel in foreign countries. The commission of our Savior demands that we preach the gospel of the kingdom to

every creature in all the world. If the letters to this association show the full amount of the contributions of the churches to Foreign Missions, your committee is firmly of the opinion that we have not discharged our duty along this line. We urge our pastors to preach at least one sermon each year on the subject of Foreign Missions and follow the sermon with a collection. This should not be put off until the last of the year. There are untold millions of heathen dying without any knowledge of a Redeemer, and it is incumbent upon us to tell them of the Savior we have found. It should be a pleasure and a source of great joy in the Lord to break the bread of life to those who sit in the darkness and have it not. We believe it would be wise and helpful for our endorsed publications to publish more on the subject of Foreign Missions.

C. R. POWELL.

T. C. RUSHING.

COMMITTEE ON ORPHANS' HOME.

Our Orphans' Home at Texarkana is a creature of the State Association of Arkansas.

We recommend that the churches of the Pine Bluff Association support the home at Texarkana.

We further recommend that each Sabbath School take a collection one Sunday in each month for the support of the home.

All money for the home should be sent to Eld. J. W. Sims, Marvell, Ark. Boxes and such like for the use of the home should be sent to W. B. Young, Texarkana Ark. We recommend and urge that the churches make up boxes of clothing for the children of the home. We further recommend that the churches of the Pine Bluff Association and the state at large, send contributions to pay the \$1500.00 note that will be due January 1st, 1912.

C. W. McDONALD, Chairman.

COMMITTEE ON DOCUMENTS.

We, your Committee on Documents, beg leave to report as follows:

Number of churches represented.
 Number received by Baptism 232

Number received by Letter	95
Number received by Restoration	25
Number received by Voucher	8
Number dismissed by Letter	136
Number Excluded	56
Number Died	44
Total Increase	360
Total Decrease	236
Total Membership	3,570

We find that four churches have called for the next session of the Association, to-wit: Landmark, Mt. Harmony, Zion Hill and Sardis.

We recommend that the next session be held with Landmark church.

ED. F. McDONALD, Chairman.

PLEDGES FOR ASSOCIATIONAL MISSIONS.

Bethlehem	\$ 30.00
Benton	50.00
E. L. Page and T. C. Rushing	25.00
J. W. Avery	10.00
M. H. Carder	5.00
G. F. McCool	5.00
J. M. Kelley	5.00
J. W. Kelley	10.00
E. F. Kumpe	5.00
Herman Elrod and S. O. Ashcraft	10.00
W. A. Davenport and J. W. Holiman	10.00
C. W. McDonald and W. L. Halbert	10.00
Dave Young	5.00
Eris McCoy and Miss Emma Steel	5.00
J. T. Ashcraft	5.00
John Willman	5.00
Sharon by K. P. Davis	5.00
Zion Hill	20.00
Total	\$220.00

ORDAINED MINISTERS.

M. P. Matheny	Little Rock
G. S. Anderson	Little Rock
Ben M. Bogard	Little Rock
J. E. Newman	Little Rock
T. A. O'Bryant	Benton
C. P. Ledbetter	Benton
K. P. Davis	Benton
J. S. Hamilton	Benton
F. E. Winston	Sheridan
J. H. Donham	Benton
E. F. Appling	Brooks
E. L. Page	Sheridan
James Adams	Mabelvale, R. 1
M. S. Kelly	Prattsville
J. W. Kelly	Prattsville
Joshua Halbert	Prattsville
C. B. Barnett	Prattsville
J. I. Beck	Prattsville
H. L. Gibson	Little Rock, R. 4
P. R. Gentry	Benton
P. Sheppard	Belfast
G. G. Wray	Sheridan
W. A. Winston	Grapevine
J. A. Lawhon	Little Rock, R. 4
J. H. Logan	Sheridan
C. W. McDonald	Craig's Mill
C. F. Medlin	Bauxite
J. W. Shoptaw	Belfast
J. W. Willis	Benton
W. B. McCool	Turin
J. T. Ashcraft	Prattsville
E. D. Taylor	Grapevine
S. J. Morris	Lamont
J. F. Berry	Erin
C. O. Herndon	Bauxite, R. 1
J. W. Avery	Little Rock, R. 3
C. R. Powell	Halstead
A. F. Lamb	Leola

SUNDAY SCHOOL STATISTICS.

Churches	Superintendents	Post Offices	Officers and Teachers	Number of Pupils	Expenses	Literature Used
Ain -----	J. H. Johnson -----	Ain -----	4	40	\$ 4.75	Landmark
Benton -----	W. M. Gunn -----	Benton -----	9		50.00	Convention
Bethlehem -----	W. F. Miller -----	Little Rock -----	5	75		Landmark
Big Creek -----	D. F. Shepherd -----	Sheridan -----	5	140		Landmark
Corinth -----	Geo. Meek -----		5	46	3.00	Landmark
Fairview -----	G. W. Haley -----	Mabelvale -----	7	60	4.00	Landmark
Germania -----	J. P. Carpenter -----	Germania -----	5		4.50	Landmark
Harmony -----	D. H. Sanford -----	Prattsville -----	5	53	2.00	Landmark
Ironton -----	C. C. Kumpe -----	Little Rock, R. 4 -	7	50	11.90	Landmark
Liberty (Saline) -----	J. C. Davis -----	Bauxite -----	5	45	2.00	Landmark
Liberty (Grant) -----	J. W. Holiman -----	Belfast -----	6	30	3.00	Landmark
Leola -----	W. S. Houlditch -----	Leola -----	6	87	10.50	Landmark
Landmark -----	W. H. Treadway -----	Little Rock, R. 4 -	7	93	6.70	Landmark
Mt. Olive -----	S. A. Rowland -----	Corwin -----	5	68		Landmark
New Friendship -----	J. W. Croxton -----	Detonti -----	8	60	5.00	Landmark
New Hope -----	E. M. Burrow -----	Poyer -----	5	40	4.00	Landmark
New Liberty -----	W. C. Atwood -----	Hensley -----	5	50	10.04	Landmark
Pleasant Hill -----	D. H. Mashburn -----	Mabelvale -----	9	100	15.00	Convention
Redfield -----	Dell Arndall -----	Redfield -----	5	30		
Sardis -----	T. W. Morrow -----	Grapevine -----	4	30	5.00	Landmark
Zion Hill -----	J. G. Turner -----	Little Rock, R. 3 -	8	50	18.00	Am. Bap. & Landmark

CHURCH DIRECTORY—1912.

Churches.	Pastors.	Post Office.	Clerks.	Post Office.
Ain	J. F. Berry	Erin	W. E. Johnson ...	Ain
Benton	T. A. O'Bryant ..	Benton	E. Y. Stinson	Benton
Bethlehem	G. S. Anderson ..	Little Rock	Charley Weber ..	Little Rock
Big Creek	E. L. Page	Sheridan	J. N. Mingea	Sheridan
Corinth	F. E. Winston ...	Sheridan	D. F. Wells	Belfast
Cedar Branch ...	F. E. Winston ...	Sheridan	H. Huett	Darysaw
East Union	P. Sheppard	Belfast	W. M. Haynes ...	Craig Mill
Ephesus	E. L. Page	Sheridan	H. H. Crutchfield	Sheridan
Fairview	C. W. McDonald	Craig Mill	G. W. Haley	Marbelvale, R. 1.
Germania	J. P. Carpenter ..	Germania
Gethsemane	J. W. Flynn	Staves
Harmony	J. W. Kelly	Prattsville	J. T. Halbert	Prattsville
Harvest Bell	J. H. Logan	Sheridan	H. Pierce	Belfast
Ironton	W. A. Winston ..	Grapevine	C. C. Kumpe	Little Rock, R. 4.
Liberty (Saline) .	C. Q. Herndon ..	Benton	J. E. Westbrook .	Bryant
Liberty (Grant) .	P. Sheppard	Belfast	W. A. Douglas ..	Belfast
Leola	A. F. Lamb	Leola	J. A. Jaggars ...	Leola
Lost Creek	E. L. Page	Sheridan	Will Newell	Sheridan
Landmark	J. W. Avery	Little Rock, R. 3 .	J. I. Sanders	Little Rock, R. 4.
Little Creek	F. E. Winston ...	Sheridan	W. H. Allison ...	Sheridan
Mt. Olive	W. McDonald	Craig Mill	J. C. Donham	Alexander, R. 2.

CHURCH DIRECTORY—Continued

Churches.	Pastors.	Post Office.	Clerks.	Post Office.
Mt. Harmony	J. E. Godfrey ...	Haskell
Marlow	J. H. Shoptaw ...	Belfast	John King	Ico
New Friendship .	J. W. Kelly	Prattsville	J. W. Croxton ..	Detonti
New Hope	R. L. Burrow	Poyen
New Prospect ...	C. P. Ledbetter ..	Benton	C. E. Peeler	Benton
New Liberty	C. W. McDonald .	Craig Mill	Eris McCoy	Hensley
Orion	C. W. McDonald .	Craig Mill	H. F. Clark	Redfield
Palestine	P. Sheppard	Belfast	O. W. Walters ...	Belfast
Philadelphia	J. T. Ashcraft ...	Prattsville	A. T. Threet	Prattsville
Providence	F. E. Winston ...	Sheridan	J. M. Bass	Double Wells
Pleasant Hill	E. J. A. McKinne	Little Rock	Gussie Waits	Alexander, R. 2.
Reedville	F. E. Winston ...	Sheridan	H. L. Phillips ...	Pine Bluff, R. 4.
Redfield	J. H. Logan	Sheridan	N. E. Matthews ..	Redfield
Sardis	W. A. Winston ..	Grapevine	Jno. M. Taylor ..	Grapevine
Shiloh	W. B. McCool ...	Turin	J. B. Bratton	Erin
Saline	W. B. McCool ...	Turin	May Smith	Tull
Sweet Home	J. W. Kelly	Prattsville	J. L. Stuckey	Prattsville
Social Hill	M. P. Matheny ..	Little Rock	A. H. Hope	Benton
Walnut Ridge	Martin Moore ...	Redfield
Zion Hill	C. R. Powell	Halstead	J. G. Turner	Little Rock, R. 3.

ELDER WILLIAM TUCKER.

At the ripe old age of 73, on March 3rd, 1911, at his home in Saline county, near Bauxite, Arkansas, Elder William Tucker departed this life. He was a Missionary Baptist minister and one of the most devoted.

William Tucker was born in the State of Ohio, April 29th, 1838. At the time of his conversion he resided in the State of Illinois, and united with the Missionary Baptist church at the age of 25. He preached the gospel forty-two years, and a great part of his time was spent in the counties of Grant and Saline. The good he did in the Pine Bluff Association, of which he was Moderator for some time, cannot be told.

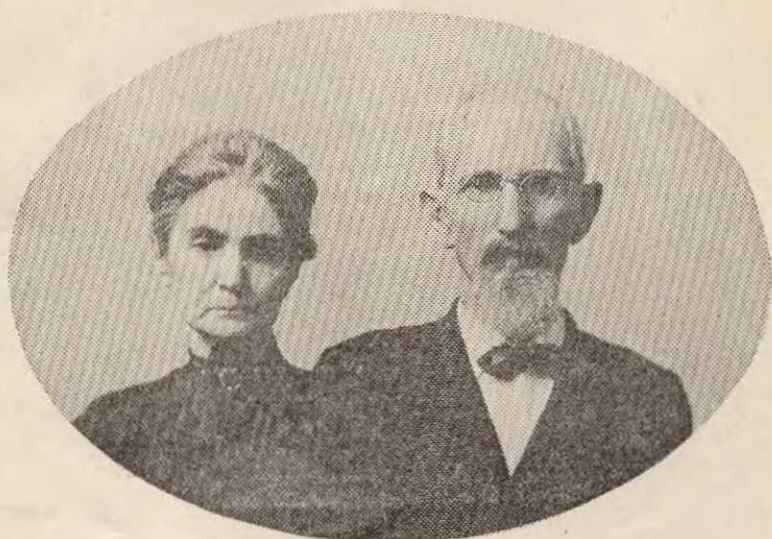
His sermons were firm, sound and logical, and showed that he was conversant with the Scriptures, and the truth he uttered came from a heart that was full of the spirit and of love. It is a remarkable fact, it is said, that he never made a failure.

Five years of his life was spent as Chaplain of the Penitentiary of Arkansas, and City Missionary of Little Rock. In this work he was most earnestly devoted, visiting the sick, the poor and needy, and ministering to their wants as Christian-like as it was possible for a man to do. It was here, too, that he put in some of the best days of his life preaching and praying for the fallen of humanity.

Brother Tucker was a preacher in deed and in truth. So much so that he would not engage in any other work, with perhaps, the exception of cultivating his little farm, for fear the remunerative would detract from his service to his God.

His life was given to the ministry. This is true in the positive degree, superlatively expressed. He came to Arkansas in 1857, and was married to Miss Elnora

Hibbard in 1860 in Desha county, Ark. He was ordained to preach on the 27th day of March, 1868. All these years he was a hard worker in the service of his Lord. The punctuality with which he filled his appointments was remarkable. When the Lord called he went regardless of difficulties. Even after he was advanced in years, and his health was much impaired, and his eyesight almost gone, he seldom missed an engagement. The weather was never too hot or too cold too wet or too dry for him to go. He would frequently go thirty miles through snow, rain and sleet to fill an appointment, when the church members thought it was too cold and bad to go a few blocks to attend the services. Doubtless no preacher since the days of the apostles was so determined or persistent in the discharge of ministerial duties. Though Elder William Tucker is dead yet he lives. His foot-prints are still seen upon the sands of time. His voice is still heard in the churches he served, and the influence of his good works are still felt by the people who are living. These facts were attested at Leola, in October, when the Pine Bluff Association, by unanimous vote ordered his picture and biography placed in these minutes. This was done because of the love and admiration the association felt for his distinguished and unswerving devotion to the work of his life—preaching the gospel of Christ. These facts were further witnessed by a quartet of ministers, who were co-workers with him, consisting of Joshua Halbert, W. B. McCool, E. F. Oppling and J. H. Donham. These four will soon pass into the great beyond, and when they are gone kind words of love and appreciation will be said in commemoration of their esteemed and devoted services. Brother Tucker has only gone a little ahead. His name is revered, his memory is cherished.



THE LATE ELDER WM. TUCKER, AND WIFE

LINES TO THE MEMORY OF ELD. WM. TUCKER

He liked to sing of Jesus	The shadows of bereavement
And his love;	O'er us fall;
He is singing with the ransomed	We mourn our absent brother,
Now above.	Loved by all.
Oftimes he gathered with us	His life was like a sunbeam
We were glad;	Through the day;
Today his seat is vacant	Scattering light and gladness,
We are sad.	In its way.
His body now is sleeping,	He was a noble preacher
In the dust;	Gladly heard;
His harvest he is reaping,	Because he was a teacher,
With the Just,	Of the Word.
His work will never perish	He loved to preach the gospel
We are glad;	And to pray;
His memory we will cherish.	He lived that blessed gospel,
Although sad.	Day by day.

Churches	Baptisms	Letter or Statement	Restoration	By Letter	By Exclusion	By Death	Present Membership	Minute Fund	Assoc. Missions	State Missions	Home Missions	Foreign Missions	Orphans Home	The Poor	Sunday School Expenses	Building and Repairs	Incidentals	Visiting Minister	Other Objects	Pastor's Salary	Value of Church Property
Antioch																					
Alexander	2	1					21	1 00					1 00		4 75			6 25			30
Ain	9						1 50						15 00		50 00						30
Benton	12	9					56	1 25					30 14		65 00		89 93	45 00		500 00	30
Bethlehem	6	1	16				192	1 75		4 65	4 65	11 65			400 00		85 00		365 00	200	250
Big Creek	5	1	122	1	1	1	98	75		2 60		1 00			3 00		12 00	10 00		75 00	50
Corinth																					
China Grove							3	67	1 00				1 00								20
Cedar Branch	6		3		1	1	83	40	1 05	2 00	1 00		3 50	11 20				13 25		50 00	20
East Union	5	1		2	1	1	122	1 30		5 10	2 10	3 60	3 65					12 75	5 00	65 00	50
Ephesus	12	5	3	4			84	1 00		1 95	3 11	1 55	3 56		12 00		2 00	16 07		70 40	50
Fairview	4	3		3	1	1	32	60		4 50	7 62	1 50			4 50			11 50		39 60	50
Germania							15	70													
Gethsemane	17	4	1	1	2	2	404	2 00		9 90	17 75	7 00	43 27	40 00	2 00	550 00	13 00	44 25		200 00	100
Harmony	4	1	1	1	1	1	62	1 00		1 25	1 25	1 25	9 75		11 90	128 75	5 00	20 35		15 00	50
Harvest Bel.	4	1	1	1	7	10	61	1 00		3 75	5 80				2 00		2 00			56 35	50
Ironton	1	4	1	1	7	10	61	1 20		4 70					3 00					49 50	20
Liberty [Saline]	9						61	1 00		3 00					10 50	32 50	40 60	3 50	10 15	62 50	120
Liberty [Grant]	13	6	1	7			1 90	1 03					8 35		10 50	32 50	40 60	3 50	10 15	62 50	120
Leola	4	1		3	4	3	93	1 65									13 00			35 00	30
Lost Creek																					
Loue Star	7	4					147	75							6 70		17 00	14 50		82 50	100
Landmark	3	1		3			71	45					50							36 95	45
Little Creek	5	1	1	1	1	1	109	65		12 08	3 90	5 00	5 00				75				
Mt. Olive							4	89	1 00				10 00	1 40						51 35	30
Mt. Harmony																					
Mars Hill	1	4					1	20													
Marlow	9	1		5	1	1	158	2 00		3 60			10 00		5 00			21 40		50 00	90
New Friendship	4	1		3	1	1	62	55		7 00					4 00					200 00	90
New Hope							23													23 05	30
New Prospect	2	1	1	2			37	70		2 00			14 25		10 04					65 55	100
New Liberty	16	2	1	1	3	2	95	90		1 30	1 30	75			159 85	6 25	12 05	23 88	65 55	100	
Orion	7	12	2	1	1	1	120	1 50		2 25										62 92	50
Palestine	10						1	78		3 10	2 00	2 65					21 00			50 00	50
Philadelphia							43	75		2 50										54 00	20
Providence																					
Perry Smith																					
Pine Grove	19	3		8	2	1	115	1 00		58 00	1 35	1 30	35 00		15 00		5 00	24 95	45 00	150 00	90
Pleasant Hill	10	3	1	2	12	3	68	1 40		1 75		1 50				15 00		3 35		75 00	15
Pilgrims Rest																					
Reedville	6	3					20						18 00		5 00						
Ruth	16	3	2	4	4	4	332			4 65							43 60	31 40		143 00	80
Redfield	9	8	2	1	1	1	86			2 10								16 50		44 17	
Sardis							5	39	50									7 00		48 28	20
Shiloh																					
Saline																					
Sharon																					
Spring Hill	6			4		3	118	65		1 00			16 25		18 00			25 00		100 00	50
Sweet Home							41	75		6 75	2 35	1 75	5 50				1 00	16 25		118 30	50
Social Hill							60													25 00	
Walnut Ridge							50	1 55		10 00		10 00	10 00		18 00		15 00	5 00		100 00	100
Zion Hill																					
Bethel No. 1																					